

Data Path : Z:\pestpcbsrv\HPCHEM1\ECD\_D\Data\PD101425\  
 Data File : PD090592.D  
 Signal(s) : Signal #1: ECD1A.ch Signal #2: ECD2B.ch  
 Acq On : 14 Oct 2025 18:32  
 Operator : AR\AJ  
 Sample : PSTDCCC050  
 Misc :  
 ALS Vial : 4 Sample Multiplier: 1

Instrument :  
 ECD\_D  
 ClientSampleId :

Integration File signal 1: autoint1.e  
 Integration File signal 2: autoint2.e  
 Quant Time: Oct 15 07:41:42 2025  
 Quant Method : Z:\pestpcbsrv\HPCHEM1\ECD\_D\Method\PD091825.M  
 Quant Title : GC Extractables  
 QLast Update : Fri Sep 19 05:52:38 2025  
 Response via : Initial Calibration  
 Integrator: ChemStation

Volume Inj. : 1 µl  
 Signal #1 Phase : ZB-MR2 Signal #2 Phase: ZB-MR2  
 Signal #1 Info : 30M x 0.32mm x0.5 Signal #2 Info : 30M x 0.32mm x 0.25µm

	Compound	RT#1	RT#2	Resp#1	Resp#2	ng/ml	ng/ml
-----							
System Monitoring Compounds							
1)	SA Tetrachlo...	3.545	2.875	167.0E6	1491.6E6	51.380	54.341
28)	SA Decachlor...	9.064	8.061	237.6E6	1565.4E6	49.236	48.294
Target Compounds							
2)	A alpha-BHC	3.995	3.387	385.5E6	2473.8E6	55.191	56.502
3)	MA gamma-BHC...	4.325	3.723	362.3E6	2285.4E6	54.761	56.104
4)	MA Heptachlor	4.923	4.075	293.9E6	2084.6E6	44.451	51.197
5)	MB Aldrin	5.265	4.361	344.5E6	2262.8E6	54.253	56.661
6)	B beta-BHC	4.513	4.019	136.3E6	959.6E6	52.814	55.357
7)	B delta-BHC	4.761	4.255	-22562350	2305.4E6	N.D.	55.829
8)	B Heptachlo...	5.685	4.864	301.3E6	2040.1E6	52.721	55.338
9)	A Endosulfan I	6.069	5.238	282.2E6	1868.4E6	52.241	53.992
10)	B gamma-Chl...	5.940	5.117	303.1E6	2214.2E6	53.058	56.361
11)	B alpha-Chl...	6.021	5.182	303.8E6	2109.8E6	52.734	56.016
12)	B 4,4'-DDE	6.191	5.366	282.0E6	2159.4E6	54.150	56.411
13)	MA Dieldrin	6.341	5.504	307.2E6	2169.2E6	53.285	55.697
14)	MA Endrin	6.569	5.781	262.3E6	1991.5E6	53.598	55.578
15)	B Endosulfa...	6.781	6.072	262.5E6	1843.2E6	53.819	54.612
16)	A 4,4'-DDD	6.700	5.921	219.9E6	1789.9E6	53.652	55.196
17)	MA 4,4'-DDT	7.016	6.174	206.8E6	1648.9E6	46.435	47.962
18)	B Endrin al...	6.910	6.250	182.2E6	1290.6E6	53.101	54.809
19)	B Endosulfa...	7.144	6.474	231.2E6	1706.0E6	50.261	52.186
20)	A Methoxychlor	7.488	6.745	100.7E6	788.0E6	42.720	45.285
21)	B Endrin ke...	7.625	6.983	247.4E6	1850.3E6	50.004	51.251
22)	Mirex	8.107	7.175	177.1E6	1393.9E6	47.811	50.494
23)	Chlordane-1	0.000	3.884	0	1094116	N.D.	0.909 #
24)	Chlordane-2	5.265f	4.497	344.5E6	55999300	1605.356	44.783 #
25)	Chlordane-3	5.940	5.117	303.1E6	2214.2E6	362.076	584.142 #
26)	Chlordane-4	6.021	5.182	303.8E6	2109.8E6	297.676	647.978 #
27)	Chlordane-5	0.000	6.072	0	1843.2E6	N.D.	1214.531 #

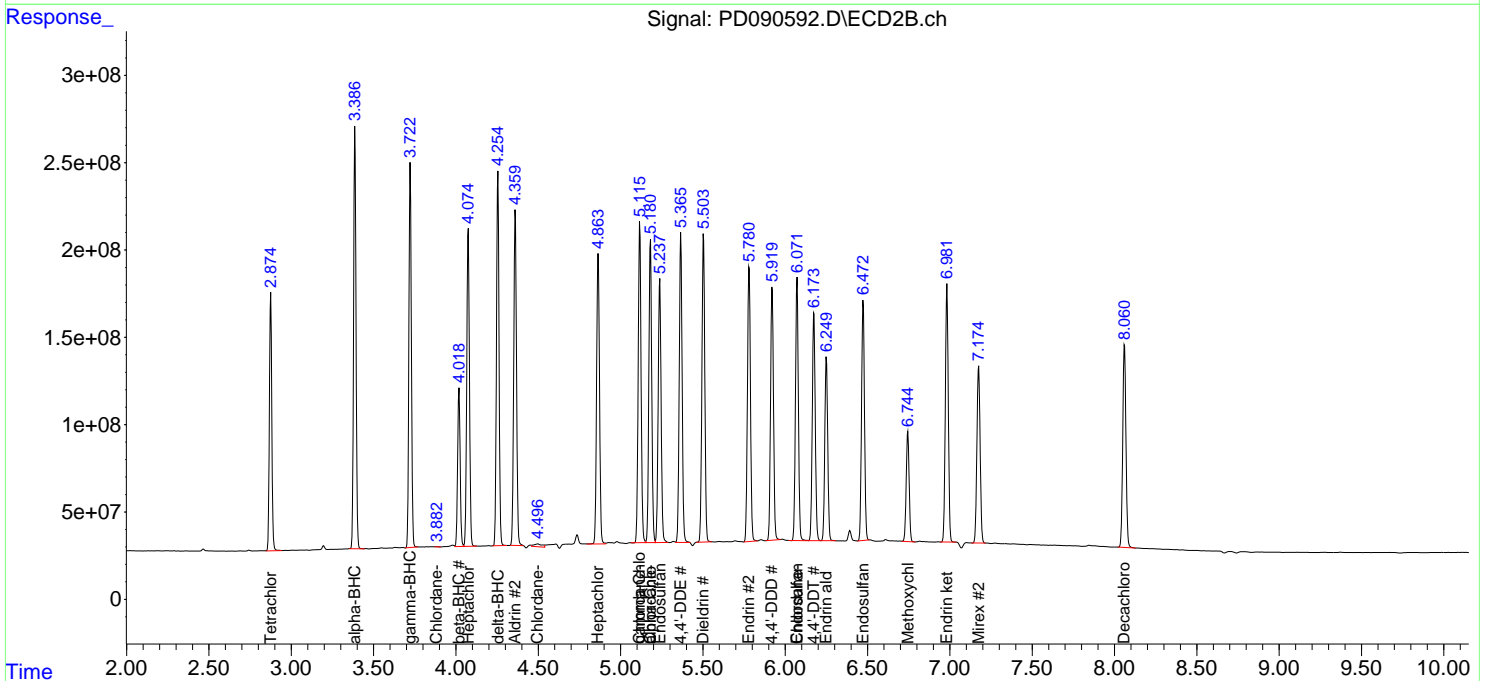
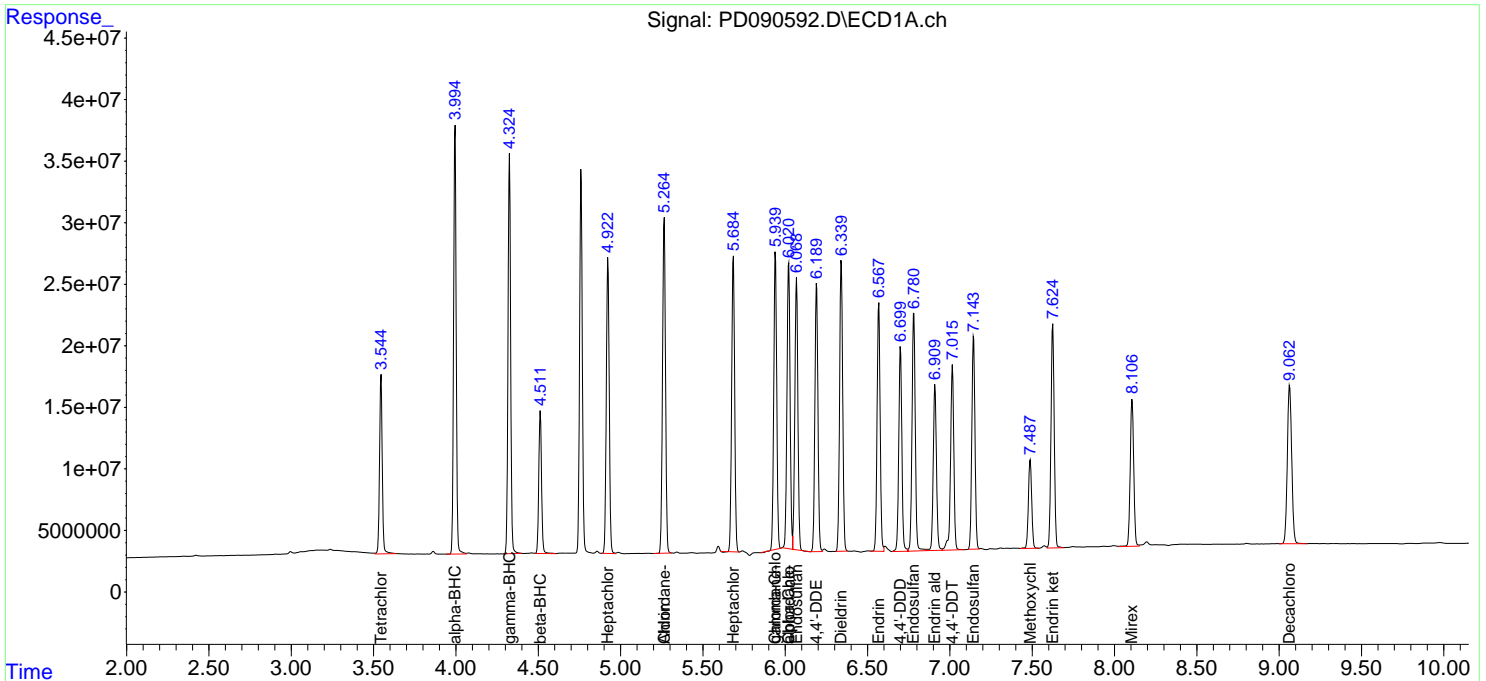
(f)=RT Delta > 1/2 Window (#)=Amounts differ by > 25% (m)=manual int.

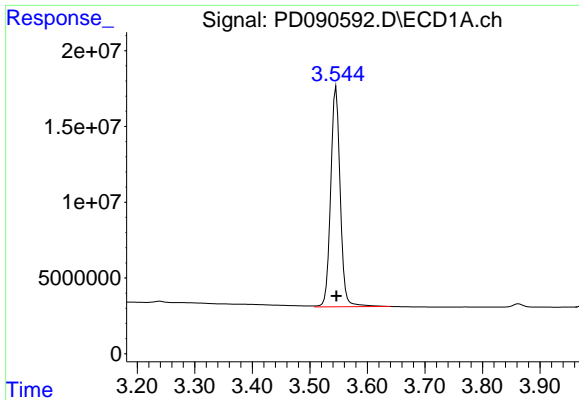
Data Path : Z:\pestpcbsrv\HPCHEM1\ECD\_D\Data\PD101425\  
 Data File : PD090592.D  
 Signal(s) : Signal #1: ECD1A.ch Signal #2: ECD2B.ch  
 Acq On : 14 Oct 2025 18:32  
 Operator : AR\AJ  
 Sample : PSTDCCC050  
 Misc :  
 ALS Vial : 4 Sample Multiplier: 1

Instrument :  
 ECD\_D  
 ClientSampleId :

Integration File signal 1: autoint1.e  
 Integration File signal 2: autoint2.e  
 Quant Time: Oct 15 07:41:42 2025  
 Quant Method : Z:\pestpcbsrv\HPCHEM1\ECD\_D\Method\PD091825.M  
 Quant Title : GC Extractables  
 QLast Update : Fri Sep 19 05:52:38 2025  
 Response via : Initial Calibration  
 Integrator: ChemStation

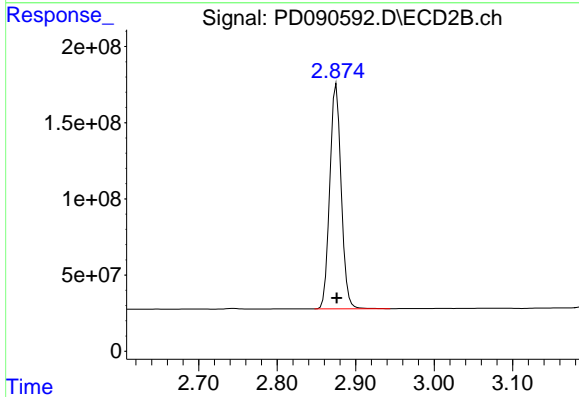
Volume Inj. : 1 µl  
 Signal #1 Phase : ZB-MR1 Signal #2 Phase: ZB-MR2  
 Signal #1 Info : 30M x 0.32mm x0.5 Signal #2 Info : 30M x 0.32mm x 0.25µm



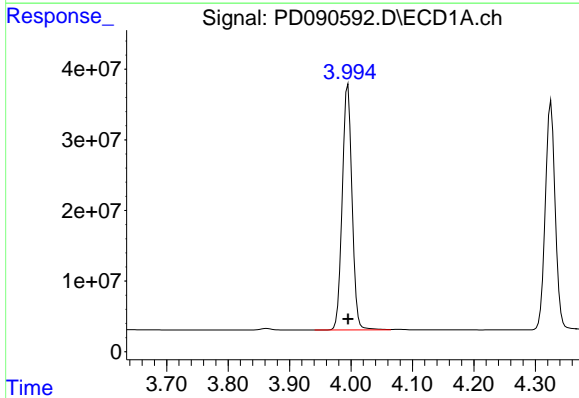


#1 Tetrachloro-m-xylene  
 R.T.: 3.545 min  
 Delta R.T.: 0.000 min  
 Response: 167009285  
 Conc: 51.38 ng/ml

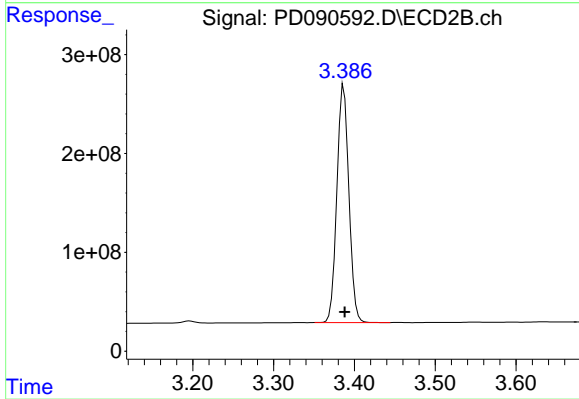
Instrument :  
 ECD\_D  
 ClientSampleId :



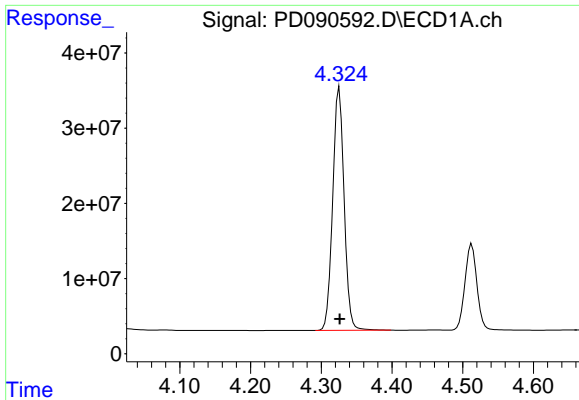
#1 Tetrachloro-m-xylene  
 R.T.: 2.875 min  
 Delta R.T.: 0.000 min  
 Response: 1491649993  
 Conc: 54.34 ng/ml



#2 alpha-BHC  
 R.T.: 3.995 min  
 Delta R.T.: 0.000 min  
 Response: 385486890  
 Conc: 55.19 ng/ml



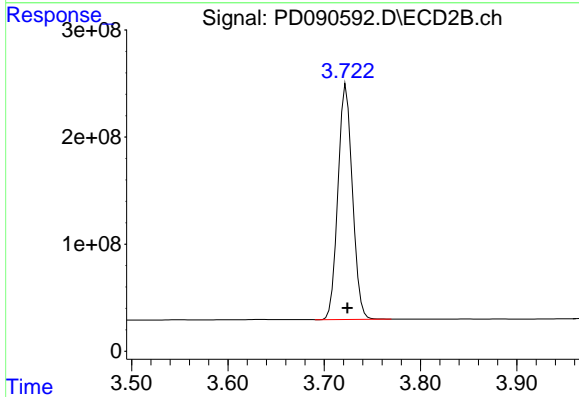
#2 alpha-BHC  
 R.T.: 3.387 min  
 Delta R.T.: 0.000 min  
 Response: 2473825575  
 Conc: 56.50 ng/ml



#3 gamma-BHC (Lindane)

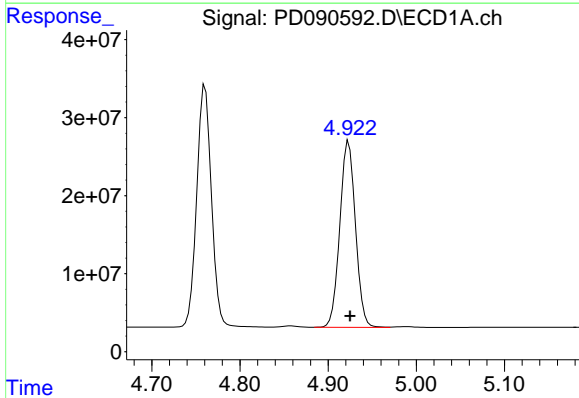
R.T.: 4.325 min  
 Delta R.T.: 0.000 min  
 Response: 362348316  
 Conc: 54.76 ng/ml

Instrument :  
 ECD\_D  
 ClientSampleId :



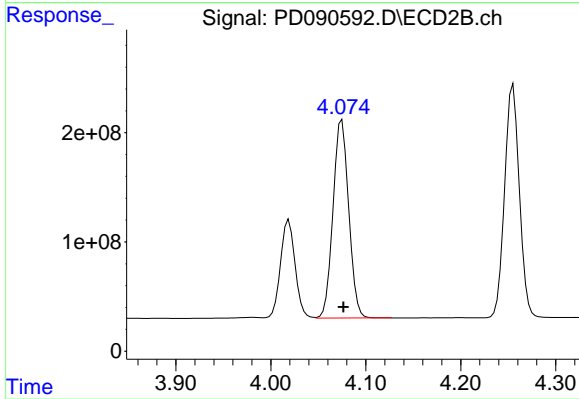
#3 gamma-BHC (Lindane)

R.T.: 3.723 min  
 Delta R.T.: 0.000 min  
 Response: 2285415797  
 Conc: 56.10 ng/ml



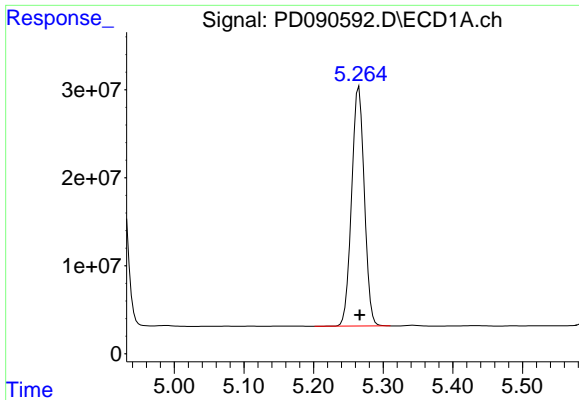
#4 Heptachlor

R.T.: 4.923 min  
 Delta R.T.: -0.002 min  
 Response: 293933747  
 Conc: 44.45 ng/ml



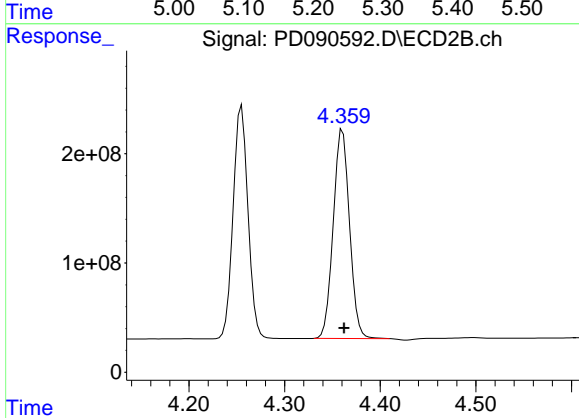
#4 Heptachlor

R.T.: 4.075 min  
 Delta R.T.: -0.001 min  
 Response: 2084556049  
 Conc: 51.20 ng/ml

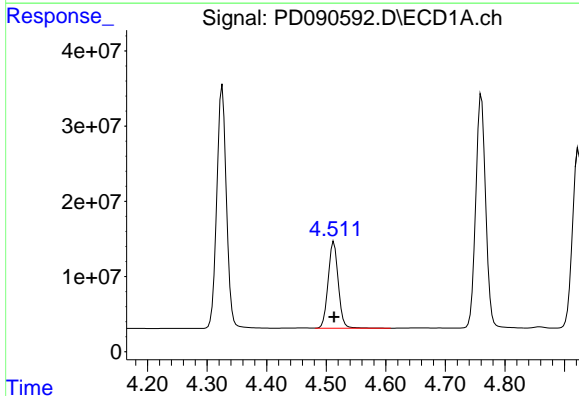


#5 Aldrin  
 R.T.: 5.265 min  
 Delta R.T.: -0.001 min  
 Response: 344502303  
 Conc: 54.25 ng/ml

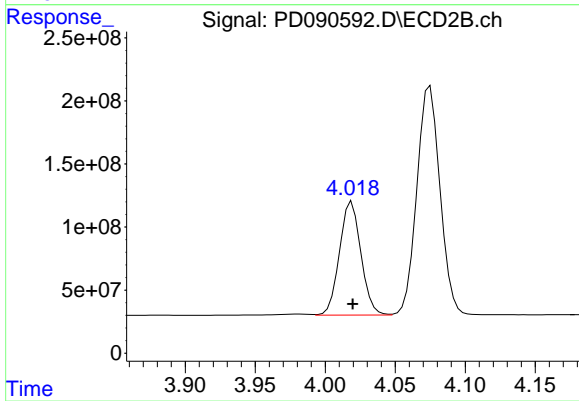
Instrument :  
 ECD\_D  
 ClientSampleId :



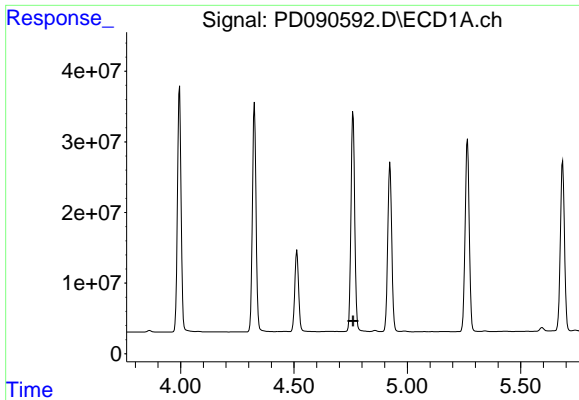
#5 Aldrin  
 R.T.: 4.361 min  
 Delta R.T.: -0.001 min  
 Response: 2262755835  
 Conc: 56.66 ng/ml



#6 beta-BHC  
 R.T.: 4.513 min  
 Delta R.T.: 0.000 min  
 Response: 136256896  
 Conc: 52.81 ng/ml



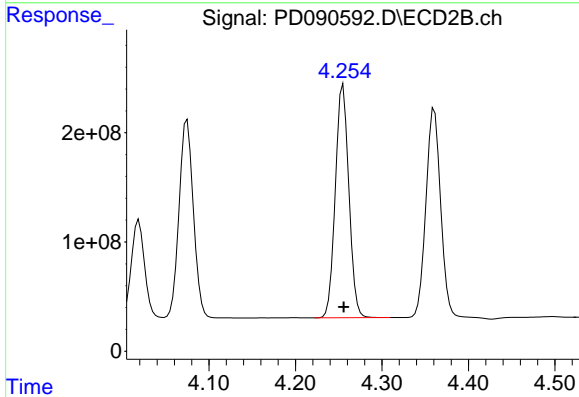
#6 beta-BHC  
 R.T.: 4.019 min  
 Delta R.T.: 0.000 min  
 Response: 959631550  
 Conc: 55.36 ng/ml



#7 delta-BHC

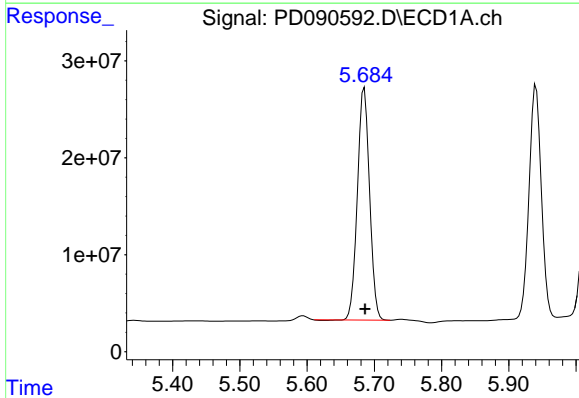
R.T.: 4.761 min  
 Delta R.T.: 0.000 min  
 Response: -22562350  
 Conc: N.D.

Instrument :  
 ECD\_D  
 ClientSampleId :



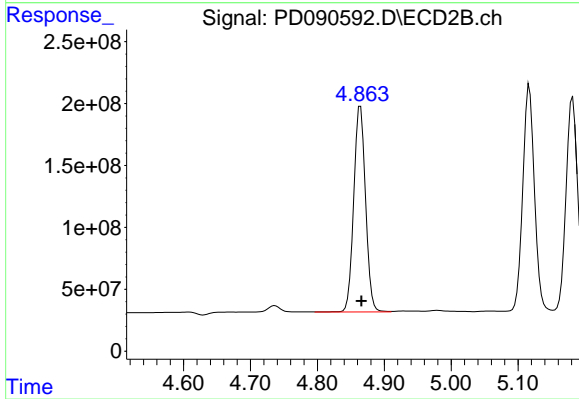
#7 delta-BHC

R.T.: 4.255 min  
 Delta R.T.: 0.000 min  
 Response: 2305443557  
 Conc: 55.83 ng/ml



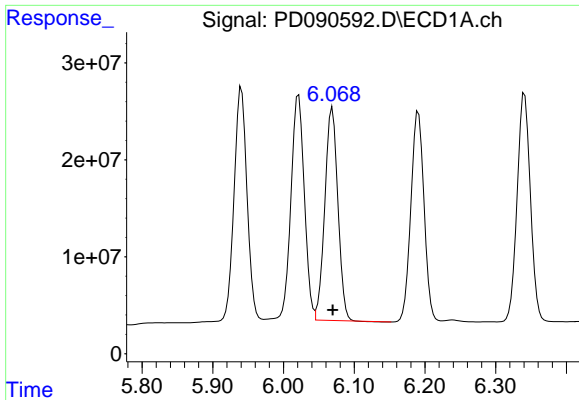
#8 Heptachlor epoxide

R.T.: 5.685 min  
 Delta R.T.: -0.001 min  
 Response: 301296215  
 Conc: 52.72 ng/ml



#8 Heptachlor epoxide

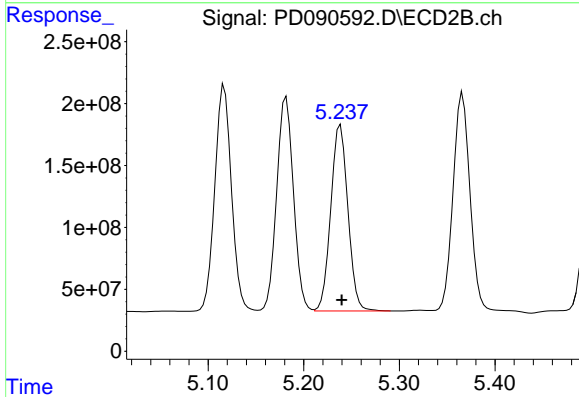
R.T.: 4.864 min  
 Delta R.T.: -0.001 min  
 Response: 2040054461  
 Conc: 55.34 ng/ml



#9 Endosulfan I

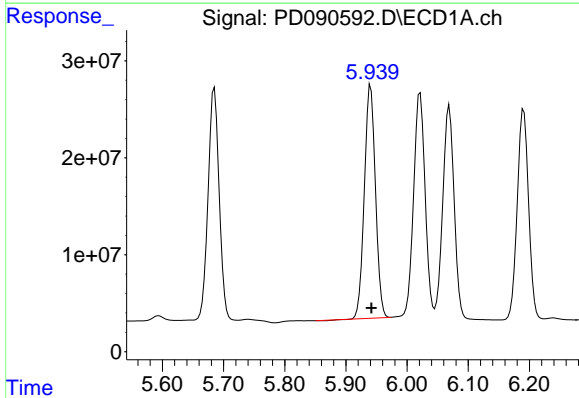
R.T.: 6.069 min  
 Delta R.T.: 0.000 min  
 Response: 282178536  
 Conc: 52.24 ng/ml

Instrument :  
 ECD\_D  
 ClientSampleId :



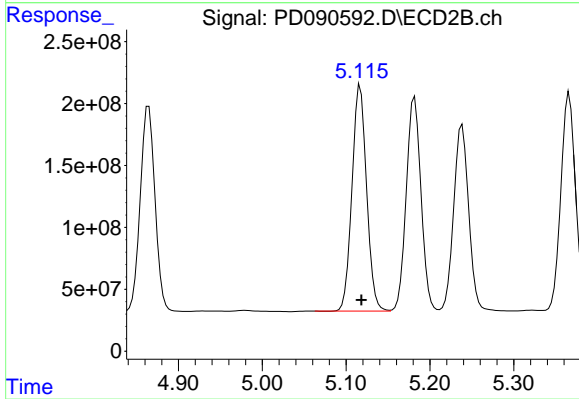
#9 Endosulfan I

R.T.: 5.238 min  
 Delta R.T.: -0.001 min  
 Response: 1868408736  
 Conc: 53.99 ng/ml



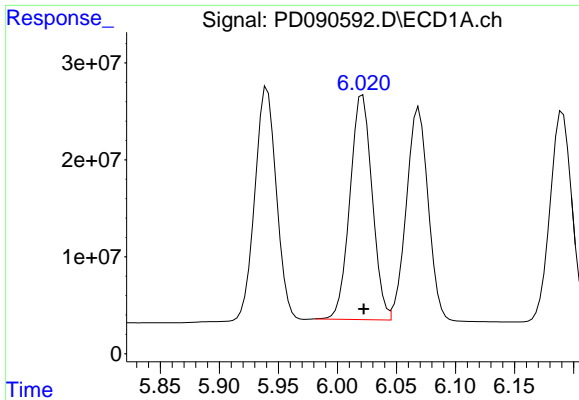
#10 gamma-Chlordane

R.T.: 5.940 min  
 Delta R.T.: -0.001 min  
 Response: 303062370  
 Conc: 53.06 ng/ml



#10 gamma-Chlordane

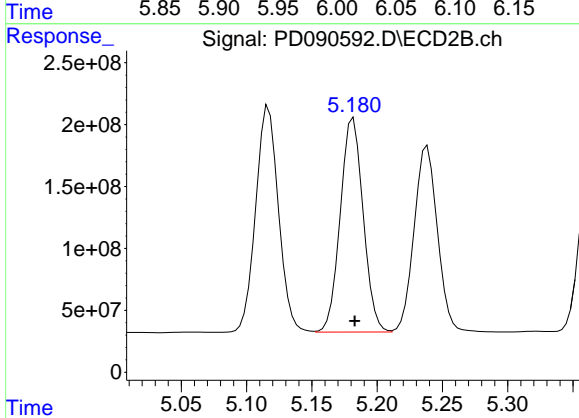
R.T.: 5.117 min  
 Delta R.T.: -0.002 min  
 Response: 2214231025  
 Conc: 56.36 ng/ml



#11 alpha-Chlordane

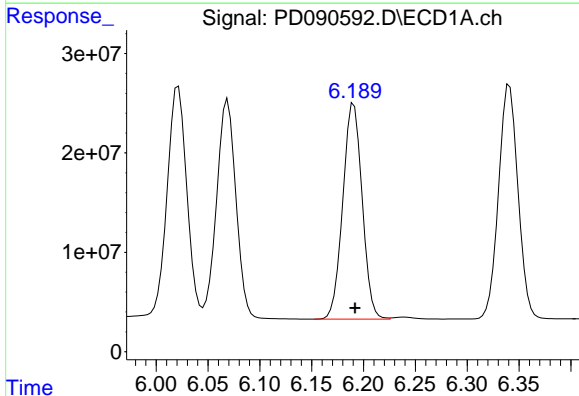
R.T.: 6.021 min  
Delta R.T.: 0.000 min  
Response: 303791024  
Conc: 52.73 ng/ml

Instrument :  
ECD\_D  
ClientSampleId :



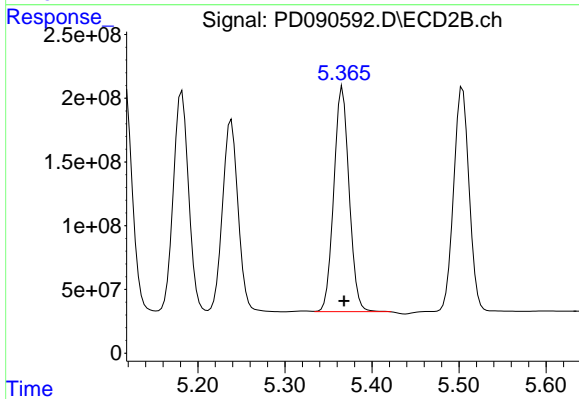
#11 alpha-Chlordane

R.T.: 5.182 min  
Delta R.T.: -0.001 min  
Response: 2109842759  
Conc: 56.02 ng/ml



#12 4,4'-DDE

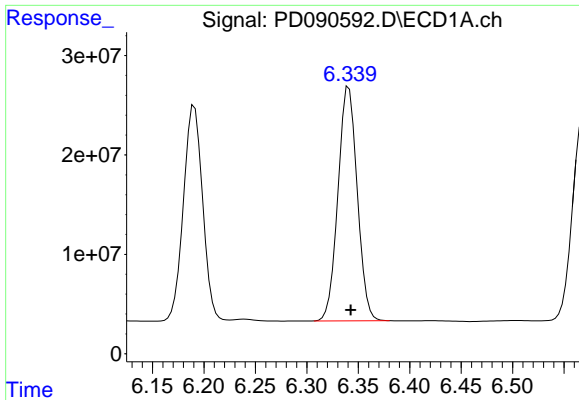
R.T.: 6.191 min  
Delta R.T.: -0.001 min  
Response: 281984907  
Conc: 54.15 ng/ml



#12 4,4'-DDE

R.T.: 5.366 min  
Delta R.T.: -0.002 min  
Response: 2159364924  
Conc: 56.41 ng/ml

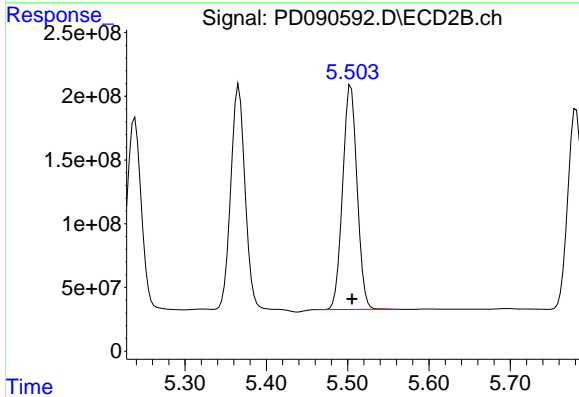




#13 Dieldrin

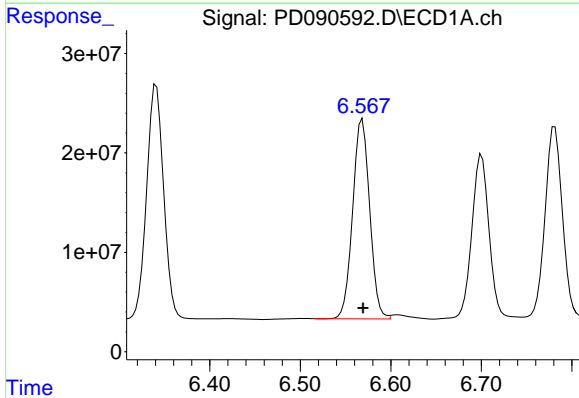
R.T.: 6.341 min  
 Delta R.T.: -0.002 min  
 Response: 307172681  
 Conc: 53.29 ng/ml

Instrument :  
 ECD\_D  
 ClientSampleId :



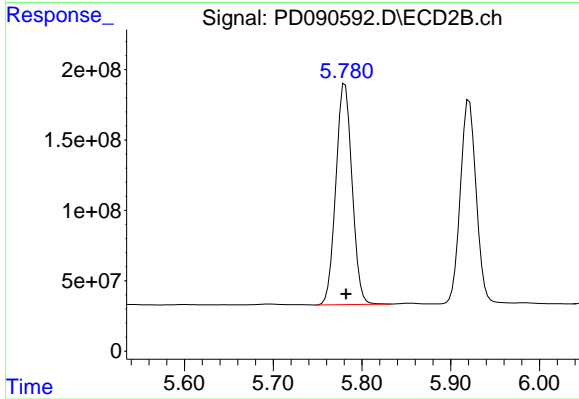
#13 Dieldrin

R.T.: 5.504 min  
 Delta R.T.: -0.002 min  
 Response: 2169175579  
 Conc: 55.70 ng/ml



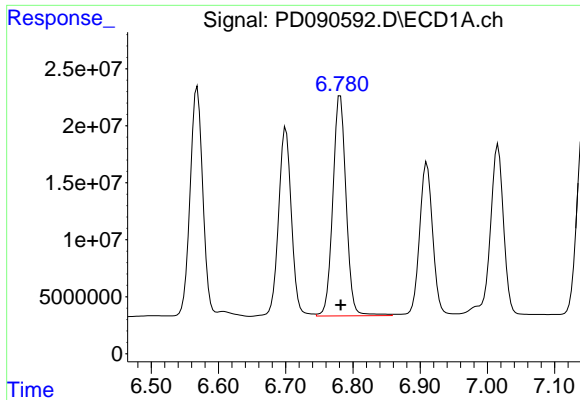
#14 Endrin

R.T.: 6.569 min  
 Delta R.T.: 0.000 min  
 Response: 262307621  
 Conc: 53.60 ng/ml



#14 Endrin

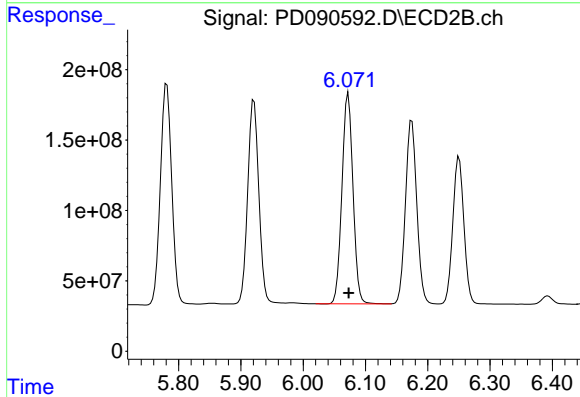
R.T.: 5.781 min  
 Delta R.T.: -0.001 min  
 Response: 1991483699  
 Conc: 55.58 ng/ml



#15 Endosulfan II

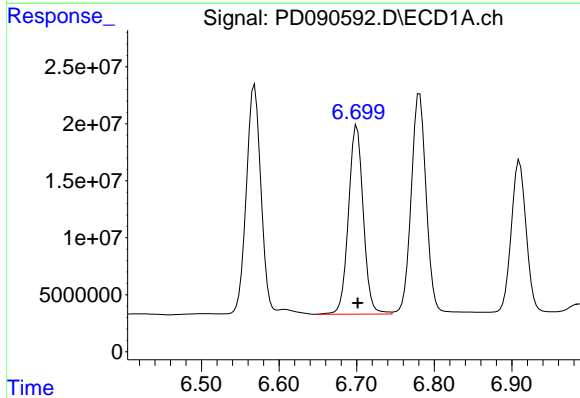
R.T.: 6.781 min  
 Delta R.T.: 0.000 min  
 Response: 262520451  
 Conc: 53.82 ng/ml

Instrument :  
 ECD\_D  
 ClientSampleId :



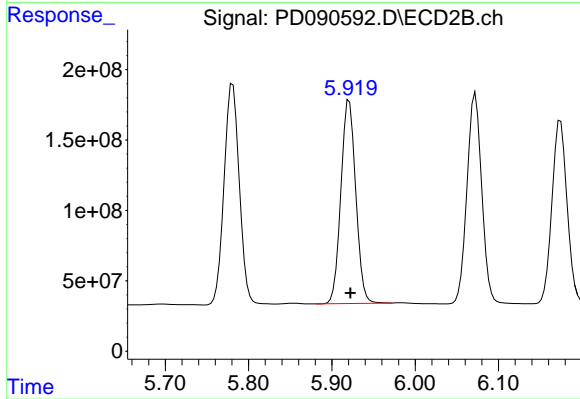
#15 Endosulfan II

R.T.: 6.072 min  
 Delta R.T.: 0.000 min  
 Response: 1843184767  
 Conc: 54.61 ng/ml



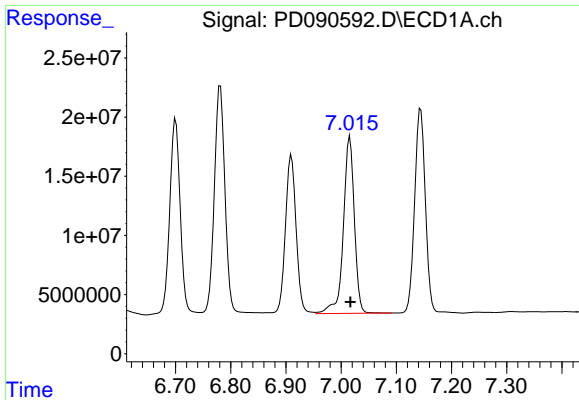
#16 4,4'-DDD

R.T.: 6.700 min  
 Delta R.T.: -0.001 min  
 Response: 219856041  
 Conc: 53.65 ng/ml



#16 4,4'-DDD

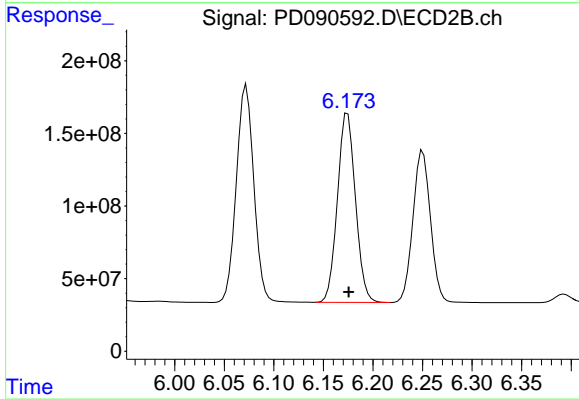
R.T.: 5.921 min  
 Delta R.T.: -0.001 min  
 Response: 1789880667  
 Conc: 55.20 ng/ml



#17 4,4'-DDT

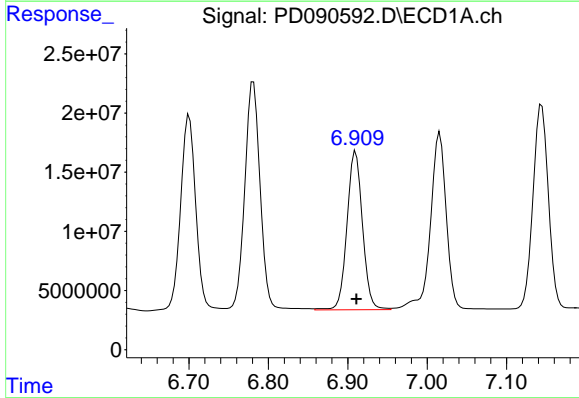
R.T.: 7.016 min  
 Delta R.T.: 0.000 min  
 Response: 206752045  
 Conc: 46.44 ng/ml

Instrument :  
 ECD\_D  
 ClientSampleId :



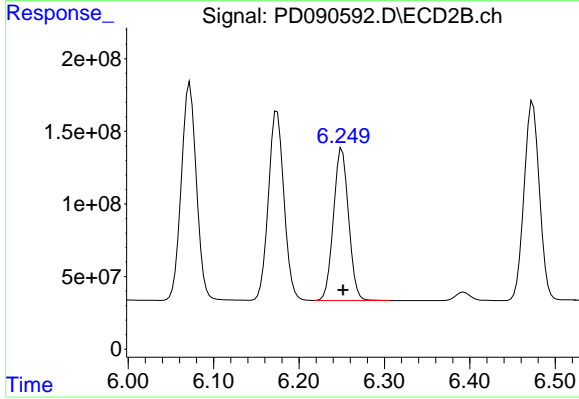
#17 4,4'-DDT

R.T.: 6.174 min  
 Delta R.T.: -0.001 min  
 Response: 1648877083  
 Conc: 47.96 ng/ml



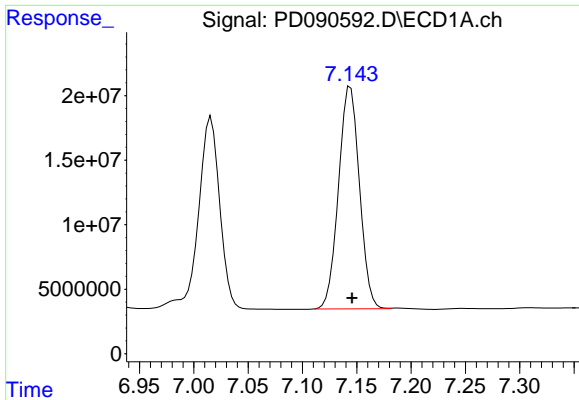
#18 Endrin aldehyde

R.T.: 6.910 min  
 Delta R.T.: -0.001 min  
 Response: 182167477  
 Conc: 53.10 ng/ml



#18 Endrin aldehyde

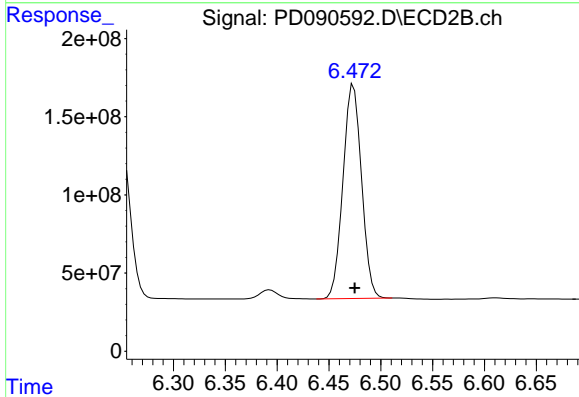
R.T.: 6.250 min  
 Delta R.T.: -0.001 min  
 Response: 1290586341  
 Conc: 54.81 ng/ml



#19 Endosulfan Sulfate

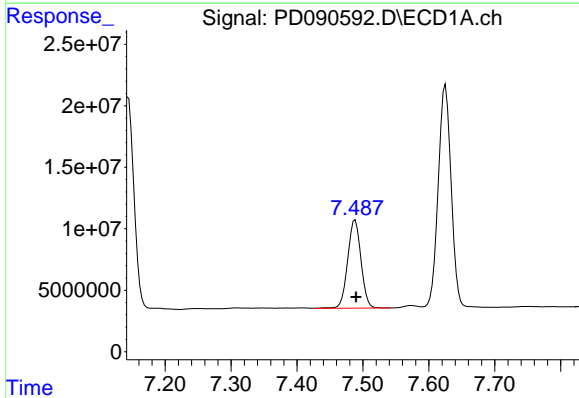
R.T.: 7.144 min  
 Delta R.T.: -0.001 min  
 Response: 231219756  
 Conc: 50.26 ng/ml

Instrument :  
 ECD\_D  
 ClientSampleId :



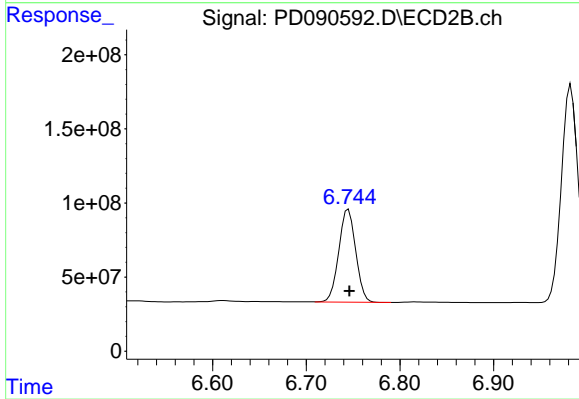
#19 Endosulfan Sulfate

R.T.: 6.474 min  
 Delta R.T.: -0.001 min  
 Response: 1705992247  
 Conc: 52.19 ng/ml



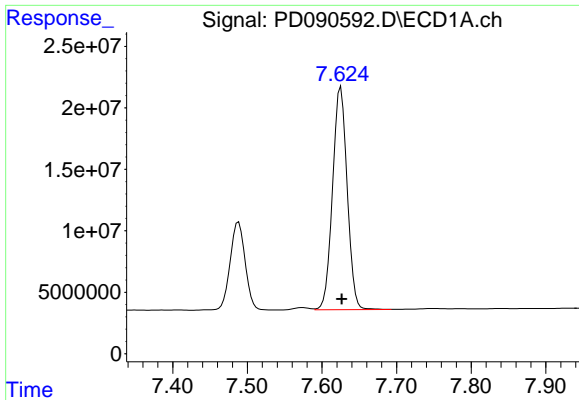
#20 Methoxychlor

R.T.: 7.488 min  
 Delta R.T.: -0.001 min  
 Response: 100669080  
 Conc: 42.72 ng/ml



#20 Methoxychlor

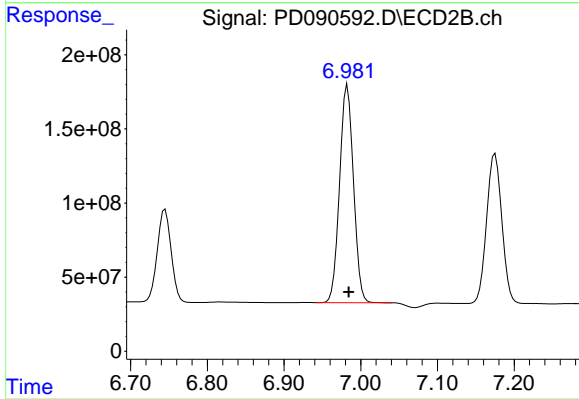
R.T.: 6.745 min  
 Delta R.T.: -0.001 min  
 Response: 787972802  
 Conc: 45.28 ng/ml



#21 Endrin ketone

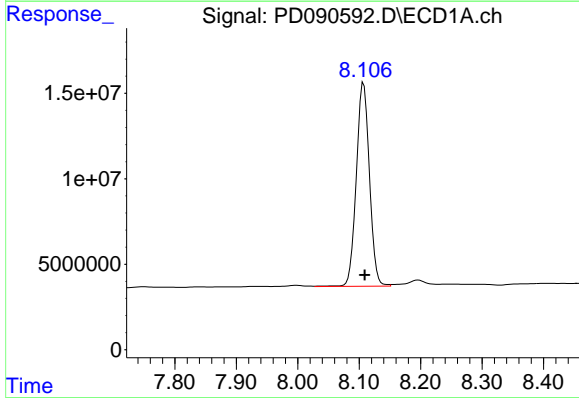
R.T.: 7.625 min  
 Delta R.T.: -0.001 min  
 Response: 247386065  
 Conc: 50.00 ng/ml

Instrument :  
 ECD\_D  
 ClientSampleId :



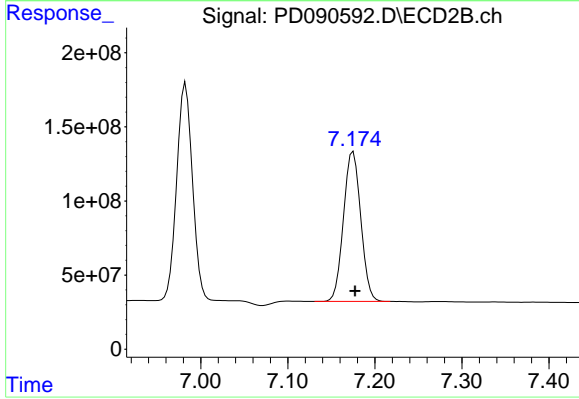
#21 Endrin ketone

R.T.: 6.983 min  
 Delta R.T.: -0.002 min  
 Response: 1850297572  
 Conc: 51.25 ng/ml



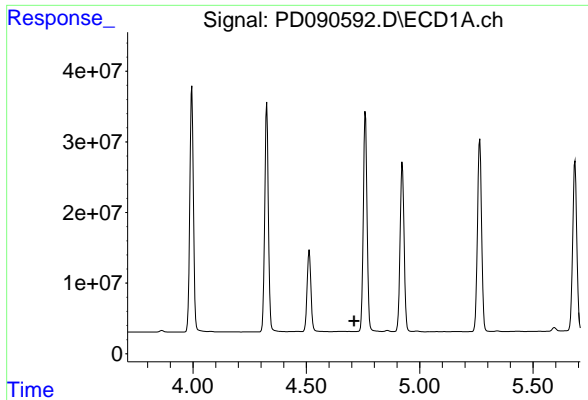
#22 Mirex

R.T.: 8.107 min  
 Delta R.T.: -0.002 min  
 Response: 177132551  
 Conc: 47.81 ng/ml



#22 Mirex

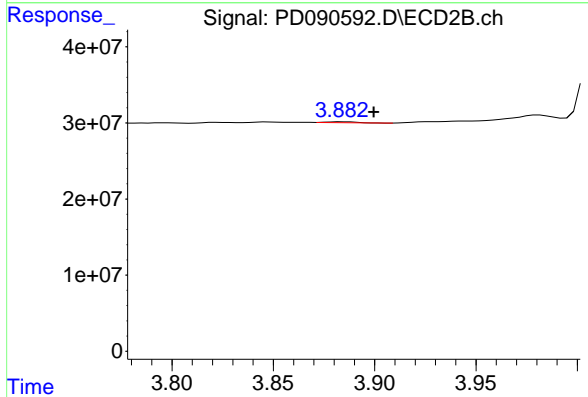
R.T.: 7.175 min  
 Delta R.T.: -0.002 min  
 Response: 1393938718  
 Conc: 50.49 ng/ml



#23 Chlordane-1

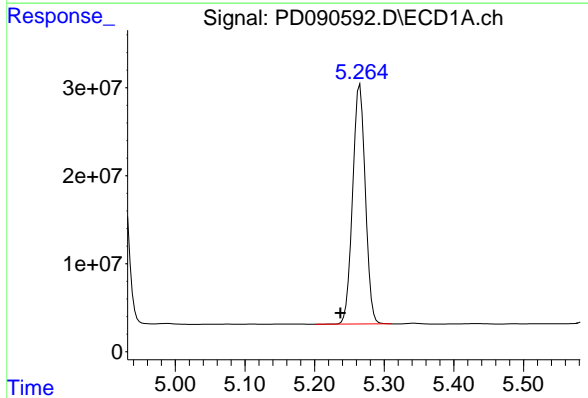
R.T.: 0.000 min  
 Exp R.T.: 4.710 min  
 Response: 0  
 Conc: N.D.

Instrument :  
 ECD\_D  
 ClientSampleId :



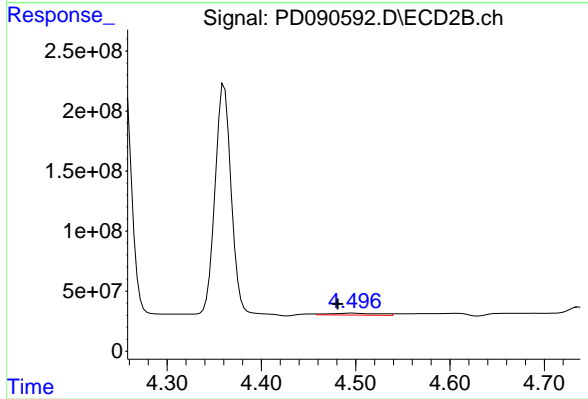
#23 Chlordane-1

R.T.: 3.884 min  
 Delta R.T.: -0.016 min  
 Response: 1094116  
 Conc: 0.91 ng/ml



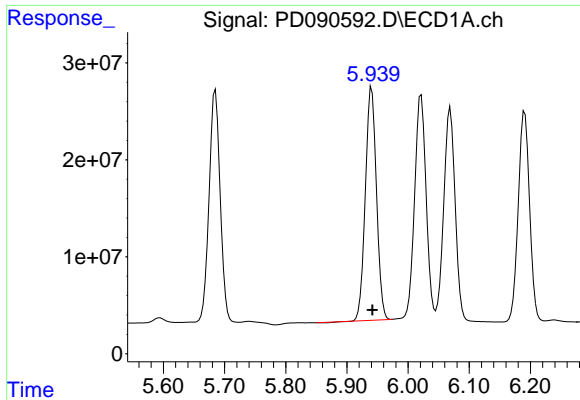
#24 Chlordane-2

R.T.: 5.265 min  
 Delta R.T.: 0.028 min  
 Response: 344502303  
 Conc: 1605.36 ng/ml



#24 Chlordane-2

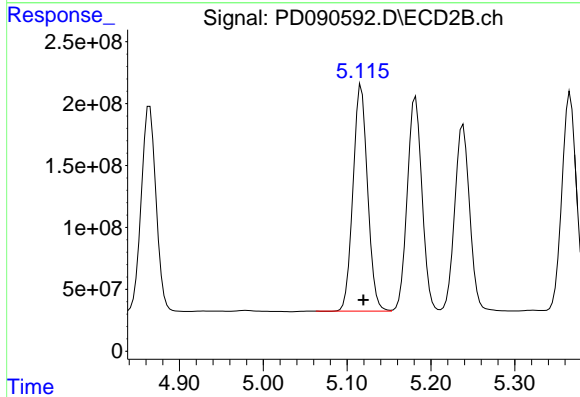
R.T.: 4.497 min  
 Delta R.T.: 0.016 min  
 Response: 55999300  
 Conc: 44.78 ng/ml



#25 Chlordane-3

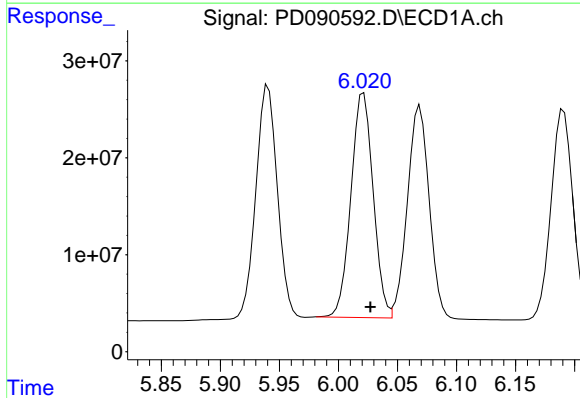
R.T.: 5.940 min  
 Delta R.T.: -0.001 min  
 Response: 303062370  
 Conc: 362.08 ng/ml

Instrument :  
 ECD\_D  
 ClientSampleId :



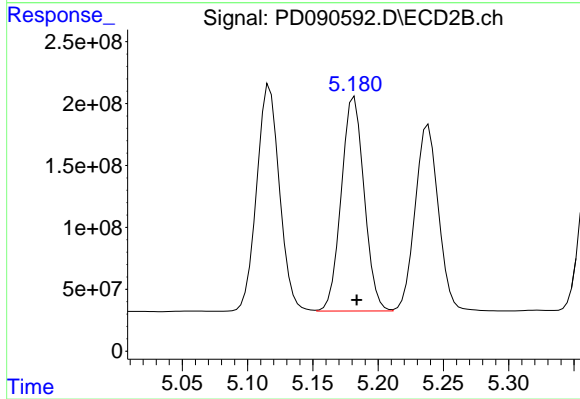
#25 Chlordane-3

R.T.: 5.117 min  
 Delta R.T.: -0.003 min  
 Response: 2214231025  
 Conc: 584.14 ng/ml



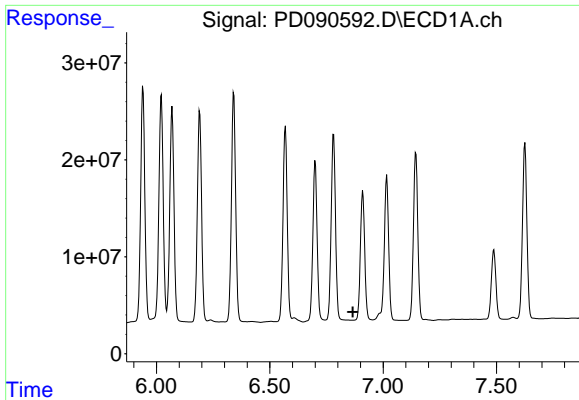
#26 Chlordane-4

R.T.: 6.021 min  
 Delta R.T.: -0.006 min  
 Response: 303791024  
 Conc: 297.68 ng/ml



#26 Chlordane-4

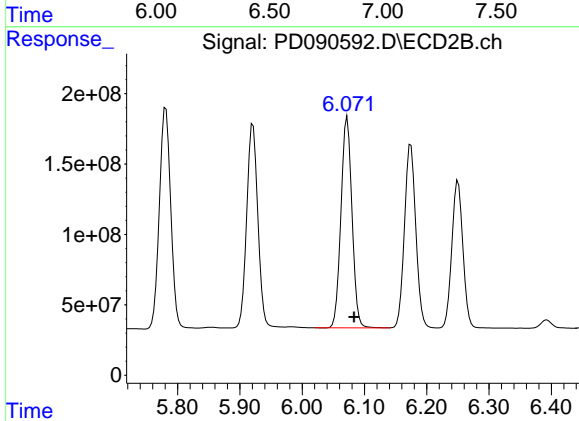
R.T.: 5.182 min  
 Delta R.T.: -0.002 min  
 Response: 2109842759  
 Conc: 647.98 ng/ml



#27 Chlordane-5

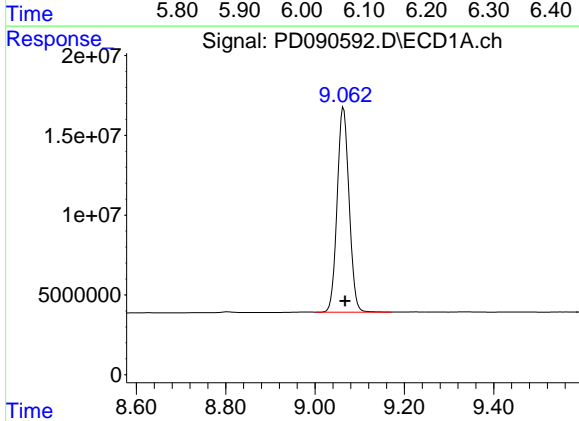
R.T.: 0.000 min  
 Exp R.T.: 6.867 min  
 Response: 0  
 Conc: N.D.

Instrument :  
 ECD\_D  
 ClientSampleId :



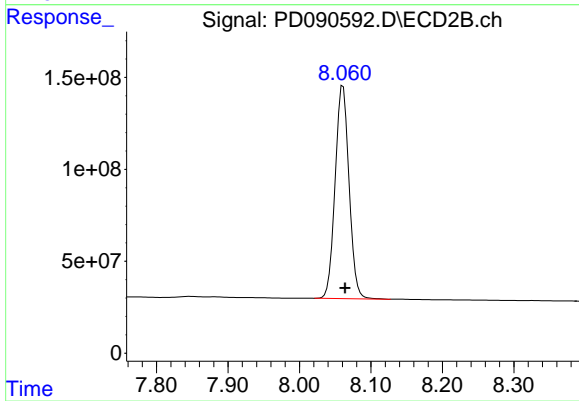
#27 Chlordane-5

R.T.: 6.072 min  
 Delta R.T.: -0.011 min  
 Response: 1843184767  
 Conc: 1214.53 ng/ml



#28 Decachlorobiphenyl

R.T.: 9.064 min  
 Delta R.T.: -0.004 min  
 Response: 237566077  
 Conc: 49.24 ng/ml



#28 Decachlorobiphenyl

R.T.: 8.061 min  
 Delta R.T.: -0.003 min  
 Response: 1565440519  
 Conc: 48.29 ng/ml