

Data Path : Z:\pestpcbsrv\HPCHEM1\ECD_D\Data\PD101523\
 Data File : PD078885.D
 Signal(s) : Signal #1: ECD1A.ch Signal #2: ECD2B.ch
 Acq On : 13 Oct 2023 20:19
 Operator : ARVAJ
 Sample : TOXAPHENE314
 Misc :
 ALS Vial : 20 Sample Multiplier: 1

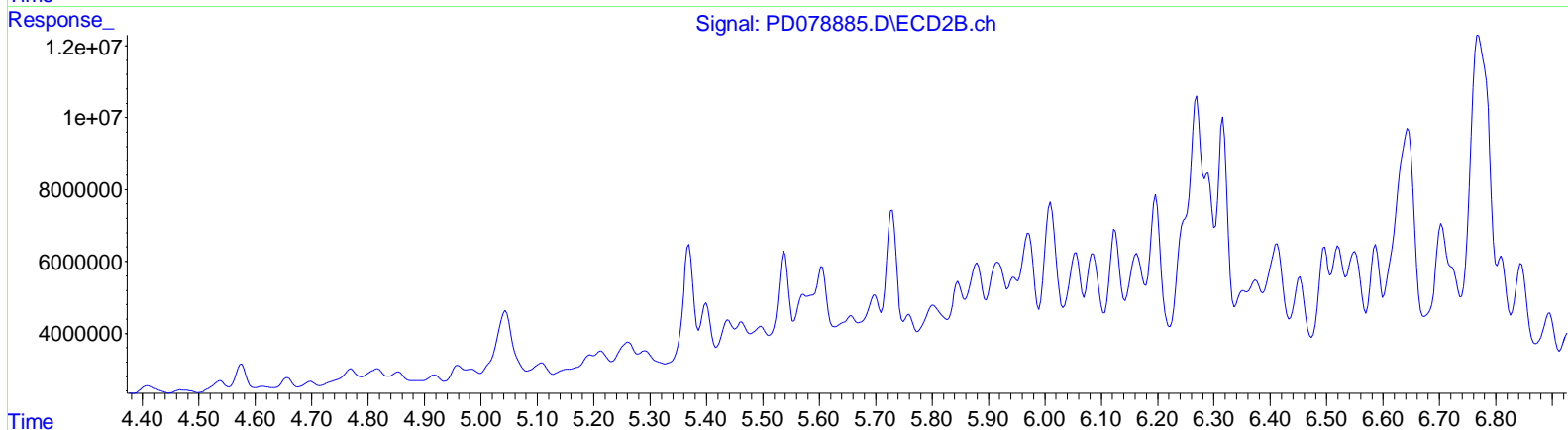
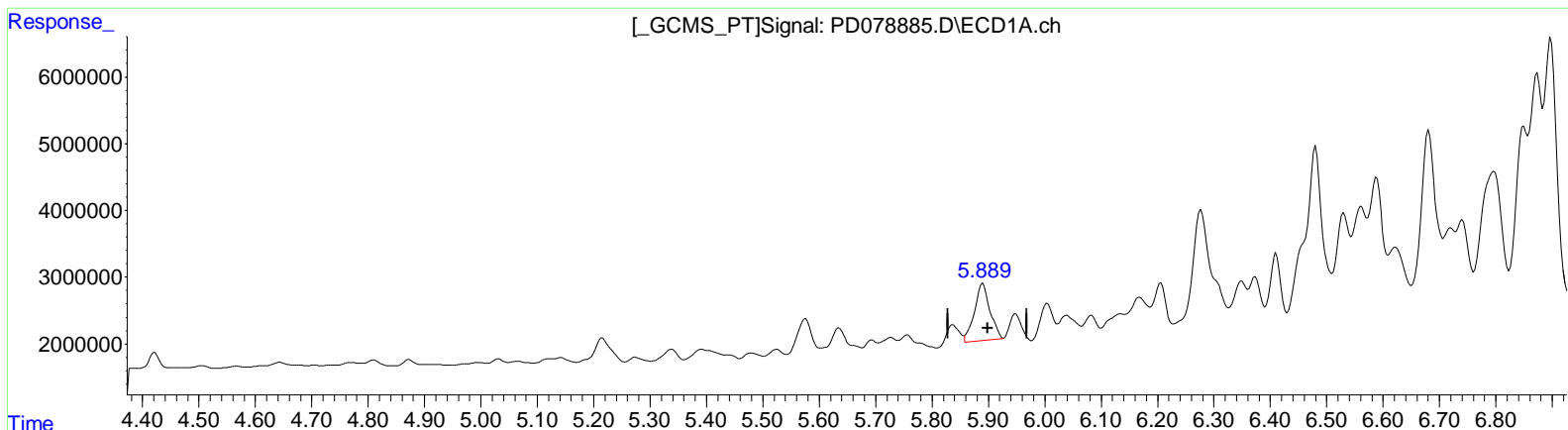
Instrument :
 ECD_D
LabSampleID :
 TOXAPHENE314

Manual IntegrationsAPPROVED

Reviewed By :Abdul Mirza 10/16/2023
 Supervised By :Ankita Jodhani 10/17/2023

Integration File signal 1: autoint1.e
 Integration File signal 2: autoint2.e
 Quant Time: Oct 15 22:40:41 2023
 Quant Method : Z:\pestpcbsrv\HPCHEM1\ECD_D\Method\PD101523CLP.M
 Quant Title : GC Extractables
 QLast Update : Fri Oct 13 16:57:38 2023
 Response via : Initial Calibration
 Integrator: ChemStation

Volume Inj. : 1 µl
 Signal #1 Phase : ZB-MR1 Signal #2 Phase: ZB-MR2
 Signal #1 Info : 30M x 0.32mm x0.5 Signal #2 Info : 30M x 0.32mm x 0.25µm



QEdit

(22) Toxaphene-1
 5.890min 2320.605 ng/ml
 response 16054835

(22) Toxaphene-1 #2
 5.400min -728.641 ng/ml
 response -11427688

Data Path : Z:\pestpcbsrv\HPCHEM1\ECD_D\Data\PD101523\
 Data File : PD078885.D
 Signal(s) : Signal #1: ECD1A.ch Signal #2: ECD2B.ch
 Acq On : 13 Oct 2023 20:19
 Operator : ARVAJ
 Sample : TOXAPHENE314
 Misc :
 ALS Vial : 20 Sample Multiplier: 1

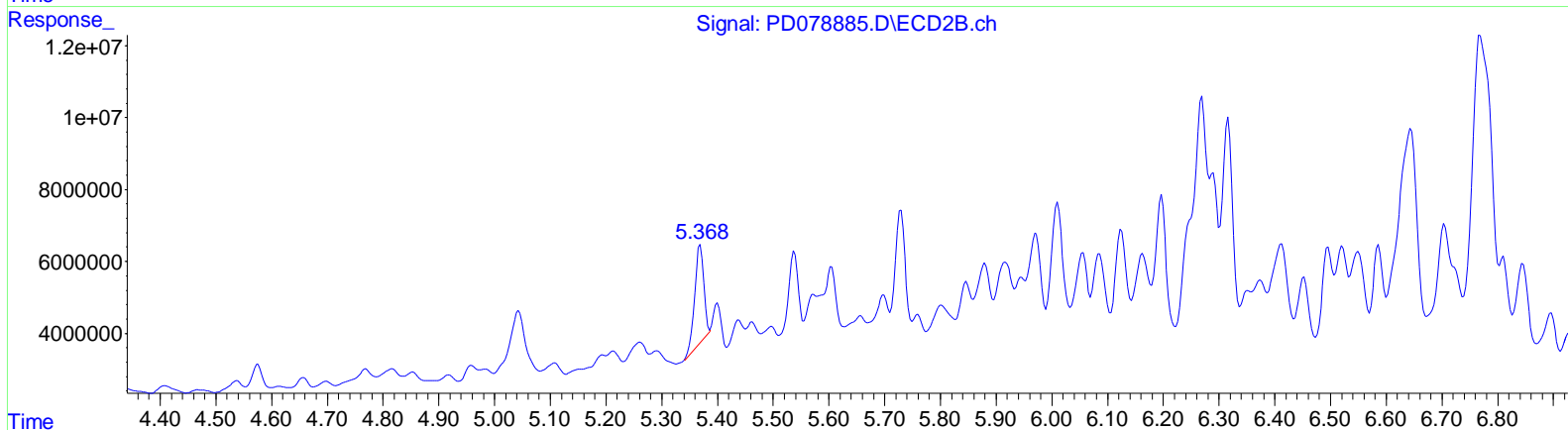
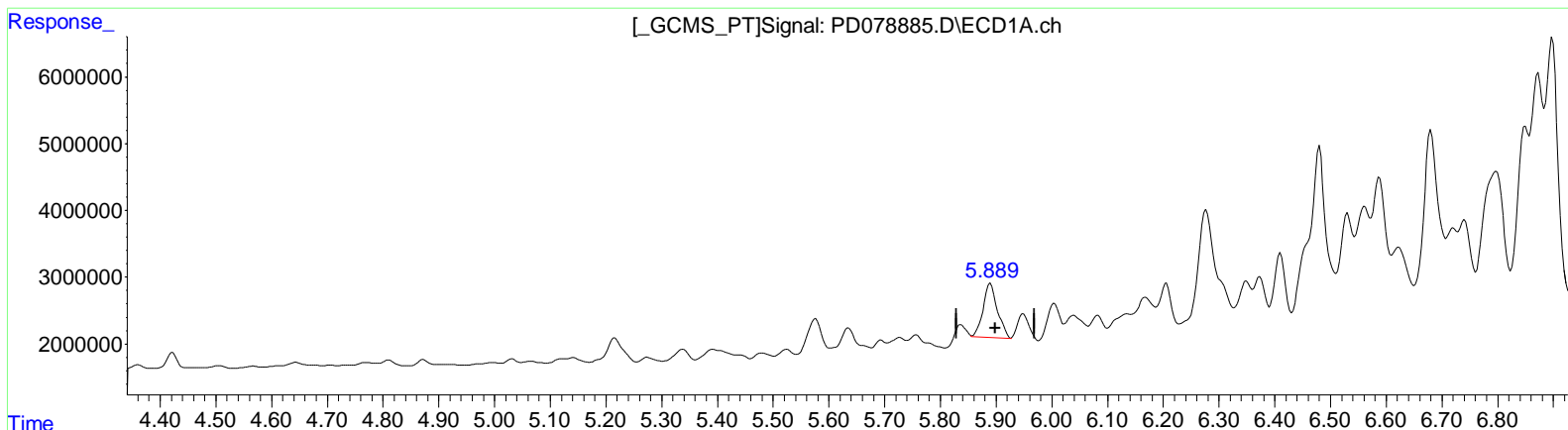
Instrument :
 ECD_D
LabSampleID :
 TOXAPHENE314

Manual IntegrationsAPPROVED

Reviewed By :Abdul Mirza 10/16/2023
 Supervised By :Ankita Jodhani 10/17/2023

Integration File signal 1: autoint1.e
 Integration File signal 2: autoint2.e
 Quant Time: Oct 15 22:40:41 2023
 Quant Method : Z:\pestpcbsrv\HPCHEM1\ECD_D\Method\PD101523CLP.M
 Quant Title : GC Extractables
 QLast Update : Fri Oct 13 16:57:38 2023
 Response via : Initial Calibration
 Integrator: ChemStation

Volume Inj. : 1 µl
 Signal #1 Phase : ZB-MR1 Signal #2 Phase: ZB-MR2
 Signal #1 Info : 30M x 0.32mm x0.5 Signal #2 Info : 30M x 0.32mm x 0.25µm



QEdit

(22) Toxaphene-1
 5.889min 2086.220 ng/ml m
 response 14433273

(22) Toxaphene-1 #2
 5.368min 2033.625 ng/ml m
 response 31894506

Data Path : Z:\pestpcbsrv\HPCHEM1\ECD_D\Data\PD101523\
 Data File : PD078885.D
 Signal(s) : Signal #1: ECD1A.ch Signal #2: ECD2B.ch
 Acq On : 13 Oct 2023 20:19
 Operator : ARVAJ
 Sample : TOXAPHENE314
 Misc :
 ALS Vial : 20 Sample Multiplier: 1

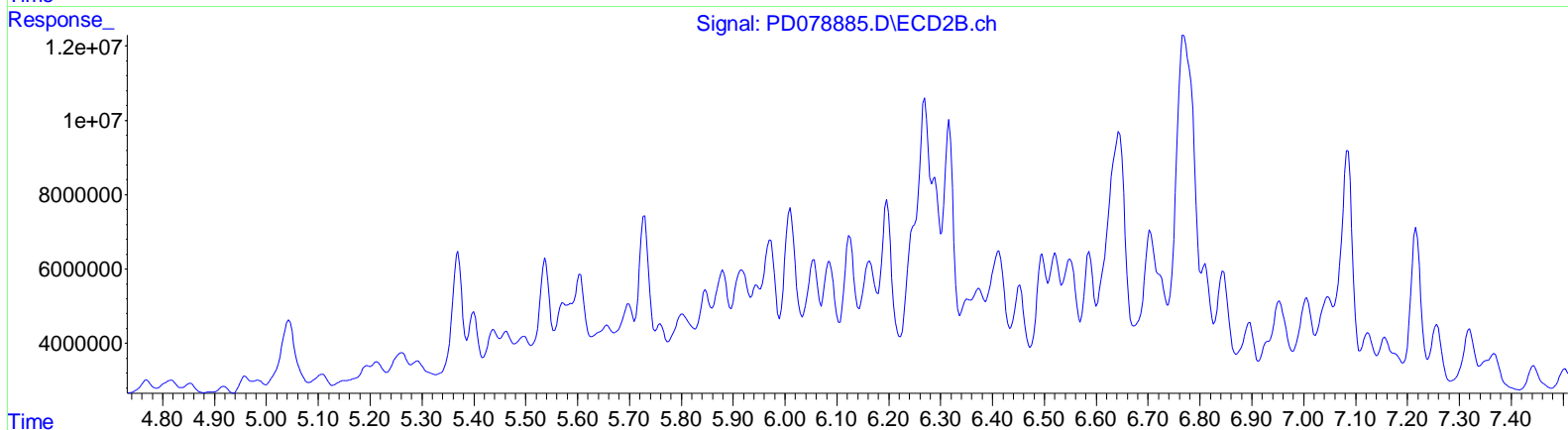
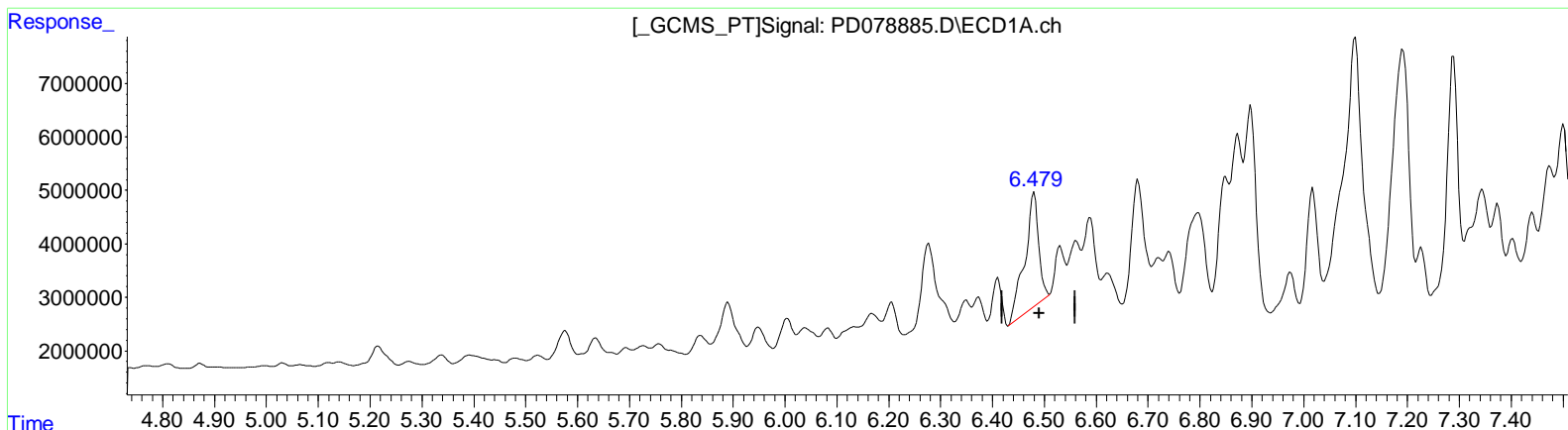
Instrument :
 ECD_D
LabSampleID :
 TOXAPHENE314

Manual Integrations APPROVED

Reviewed By : Abdul Mirza 10/16/2023
 Supervised By : Ankita Jodhani 10/17/2023

Integration File signal 1: autoint1.e
 Integration File signal 2: autoint2.e
 Quant Time: Oct 15 22:40:41 2023
 Quant Method : Z:\pestpcbsrv\HPCHEM1\ECD_D\Method\PD101523CLP.M
 Quant Title : GC Extractables
 QLast Update : Fri Oct 13 16:57:38 2023
 Response via : Initial Calibration
 Integrator: ChemStation

Volume Inj. : 1 µl
 Signal #1 Phase : ZB-MR1 Signal #2 Phase: ZB-MR2
 Signal #1 Info : 30M x 0.32mm x 0.5 Signal #2 Info : 30M x 0.32mm x 0.25µm



QEdit

(23) Toxaphene-2
 6.480min 1980.748 ng/ml
 response 39448999

(23) Toxaphene-2 #2
 5.759min -575.365 ng/ml
 response -9136332

Data Path : Z:\pestpcbsrv\HPCHEM1\ECD_D\Data\PD101523\
 Data File : PD078885.D
 Signal(s) : Signal #1: ECD1A.ch Signal #2: ECD2B.ch
 Acq On : 13 Oct 2023 20:19
 Operator : ARVAJ
 Sample : TOXAPHENE314
 Misc :
 ALS Vial : 20 Sample Multiplier: 1

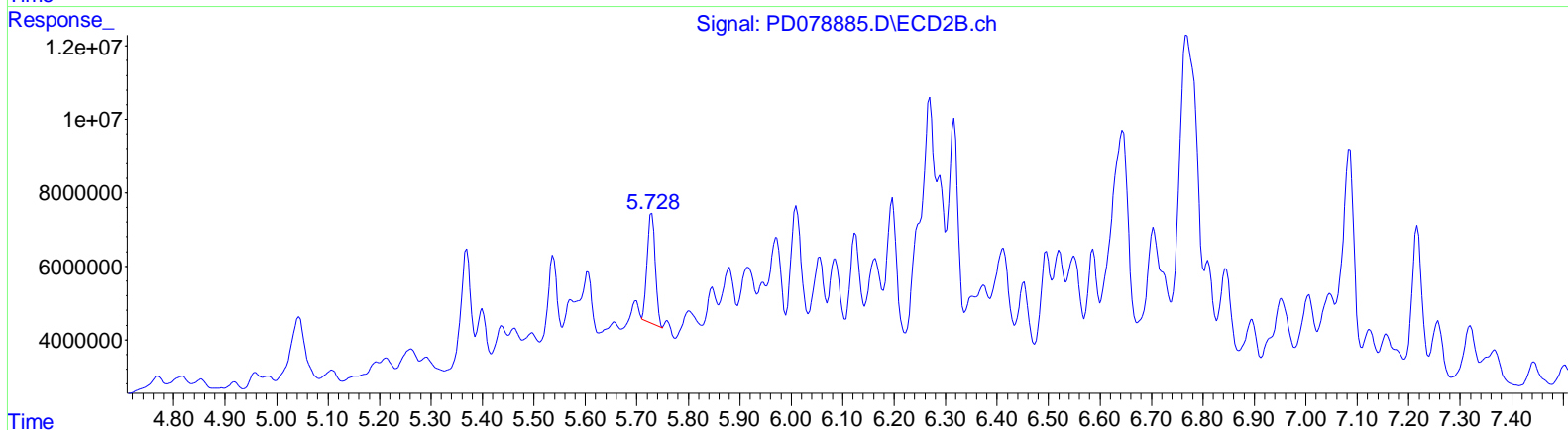
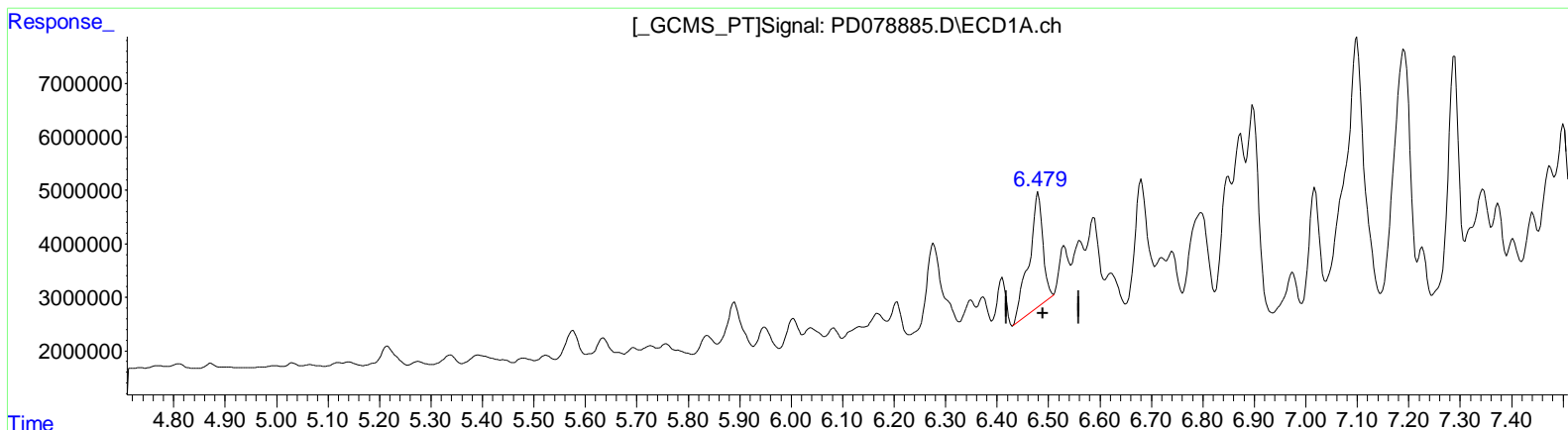
Instrument :
 ECD_D
LabSampleID :
 TOXAPHENE314

Manual Integrations APPROVED

Reviewed By : Abdul Mirza 10/16/2023
 Supervised By : Ankita Jodhani 10/17/2023

Integration File signal 1: autoint1.e
 Integration File signal 2: autoint2.e
 Quant Time: Oct 15 22:40:41 2023
 Quant Method : Z:\pestpcbsrv\HPCHEM1\ECD_D\Method\PD101523CLP.M
 Quant Title : GC Extractables
 QLast Update : Fri Oct 13 16:57:38 2023
 Response via : Initial Calibration
 Integrator: ChemStation

Volume Inj. : 1 µl
 Signal #1 Phase : ZB-MR1 Signal #2 Phase: ZB-MR2
 Signal #1 Info : 30M x 0.32mm x 0.5 Signal #2 Info : 30M x 0.32mm x 0.25µm



QEdit

(23) Toxaphene-2
 6.480min 1980.748 ng/ml
 response 39448999

(23) Toxaphene-2 #2
 5.728min 2053.976 ng/ml m
 response 32615454

Data Path : Z:\pestpcbsrv\HPCHEM1\ECD_D\Data\PD101523\
 Data File : PD078885.D
 Signal(s) : Signal #1: ECD1A.ch Signal #2: ECD2B.ch
 Acq On : 13 Oct 2023 20:19
 Operator : ARVAJ
 Sample : TOXAPHENE314
 Misc :
 ALS Vial : 20 Sample Multiplier: 1

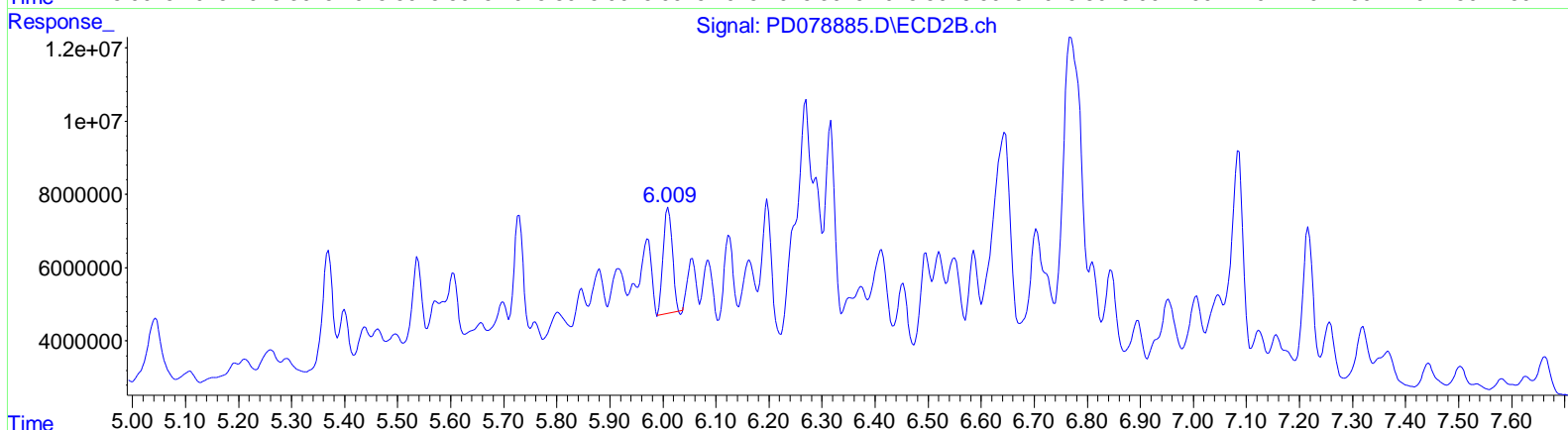
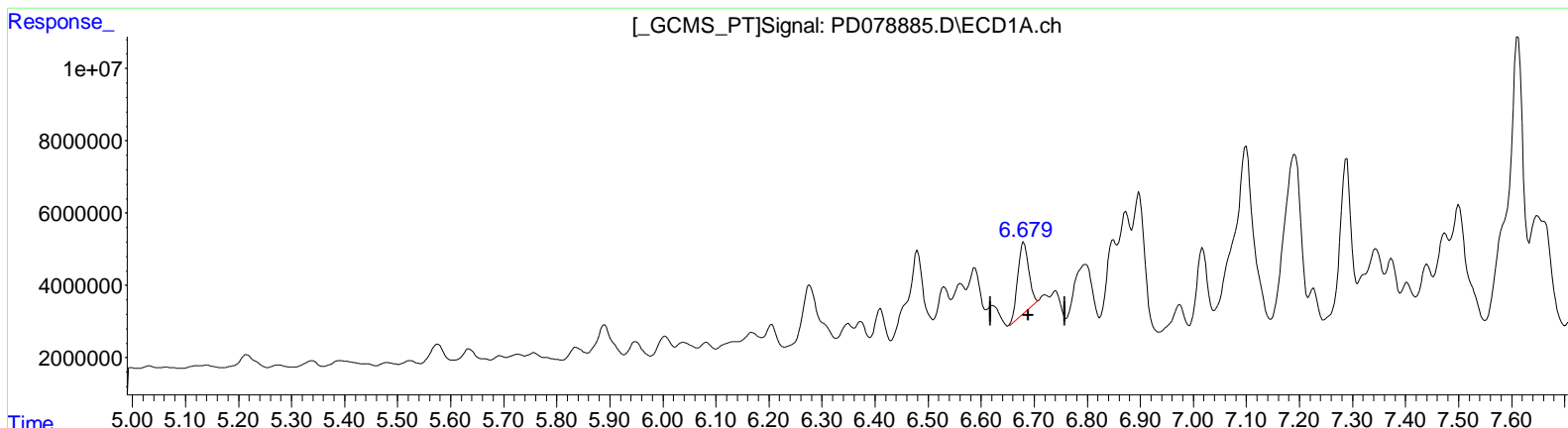
Instrument :
 ECD_D
LabSampleID :
 TOXAPHENE314

Manual Integrations APPROVED

Reviewed By : Abdul Mirza 10/16/2023
 Supervised By : Ankita Jodhani 10/17/2023

Integration File signal 1: autoint1.e
 Integration File signal 2: autoint2.e
 Quant Time: Oct 15 22:40:41 2023
 Quant Method : Z:\pestpcbsrv\HPCHEM1\ECD_D\Method\PD101523CLP.M
 Quant Title : GC Extractables
 QLast Update : Fri Oct 13 16:57:38 2023
 Response via : Initial Calibration
 Integrator: ChemStation

Volume Inj. : 1 µl
 Signal #1 Phase : ZB-MR1 Signal #2 Phase: ZB-MR2
 Signal #1 Info : 30M x 0.32mm x 0.5 Signal #2 Info : 30M x 0.32mm x 0.25µm



QEdit

(24) Toxaphene-3
 6.681min 1989.977 ng/ml
 response 27914147

(24) Toxaphene-3 #2
 6.010min 1856.743 ng/ml
 response 33617951

Data Path : Z:\pestpcbsrv\HPCHEM1\ECD_D\Data\PD101523\
 Data File : PD078885.D
 Signal(s) : Signal #1: ECD1A.ch Signal #2: ECD2B.ch
 Acq On : 13 Oct 2023 20:19
 Operator : ARVAJ
 Sample : TOXAPHENE314
 Misc :
 ALS Vial : 20 Sample Multiplier: 1

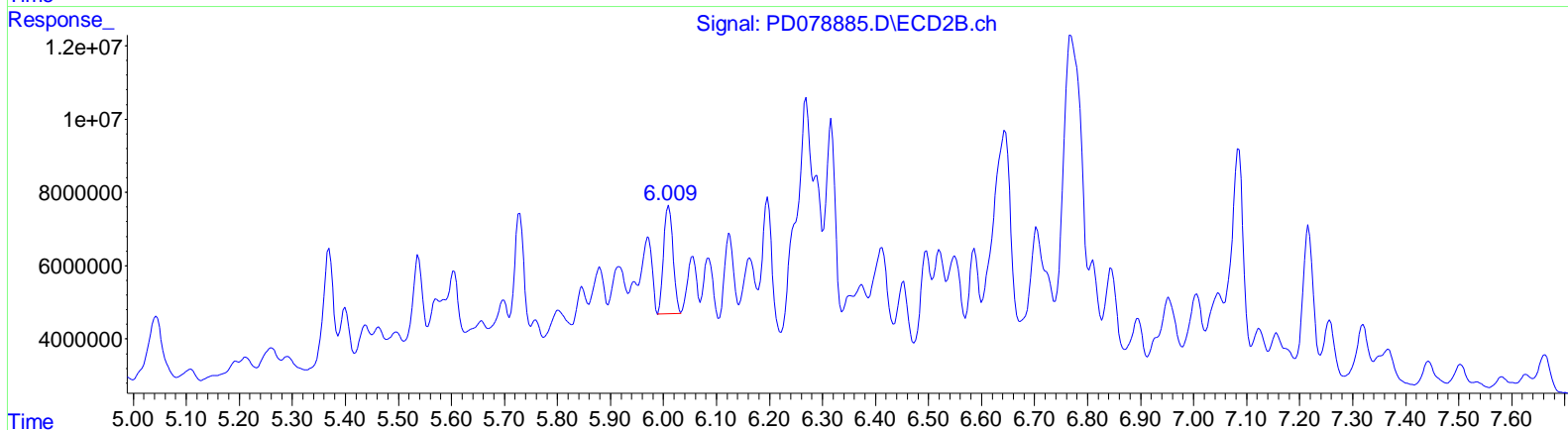
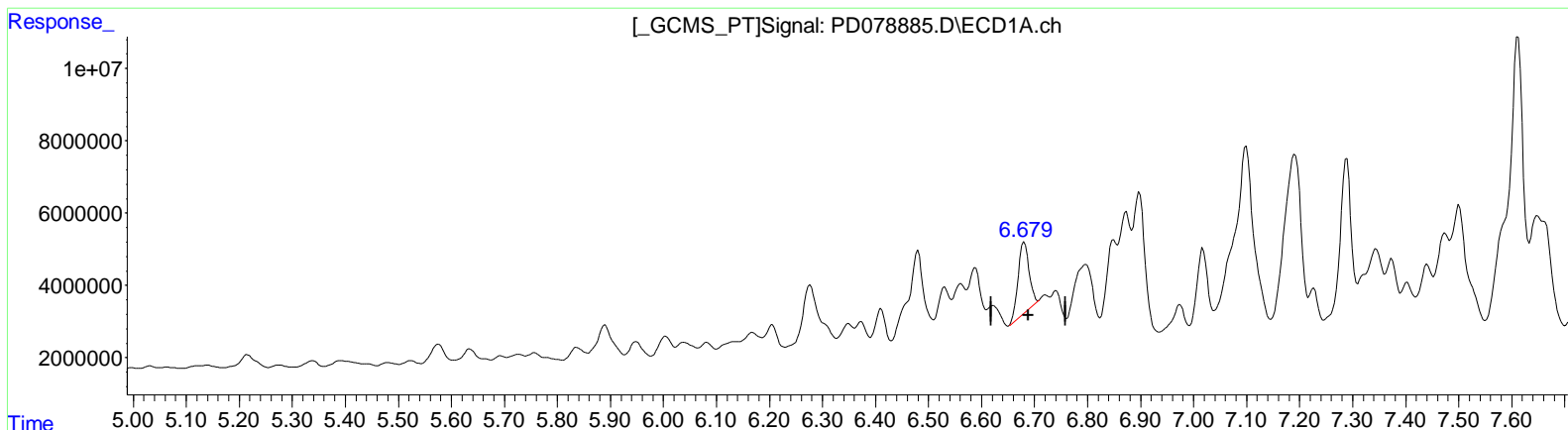
Instrument :
 ECD_D
LabSampleID :
 TOXAPHENE314

Manual Integrations APPROVED

Reviewed By : Abdul Mirza 10/16/2023
 Supervised By : Ankita Jodhani 10/17/2023

Integration File signal 1: autoint1.e
 Integration File signal 2: autoint2.e
 Quant Time: Oct 15 22:40:41 2023
 Quant Method : Z:\pestpcbsrv\HPCHEM1\ECD_D\Method\PD101523CLP.M
 Quant Title : GC Extractables
 QLast Update : Fri Oct 13 16:57:38 2023
 Response via : Initial Calibration
 Integrator: ChemStation

Volume Inj. : 1 µl
 Signal #1 Phase : ZB-MR1 Signal #2 Phase: ZB-MR2
 Signal #1 Info : 30M x 0.32mm x 0.5 Signal #2 Info : 30M x 0.32mm x 0.25µm



QEdit

(24) Toxaphene-3
 6.681min 1989.977 ng/ml
 response 27914147

(24) Toxaphene-3 #2
 6.009min 2018.113 ng/ml m
 response 36539702

Data Path : Z:\pestpcbsrv\HPCHEM1\ECD_D\Data\PD101523\
 Data File : PD078885.D
 Signal(s) : Signal #1: ECD1A.ch Signal #2: ECD2B.ch
 Acq On : 13 Oct 2023 20:19
 Operator : ARVAJ
 Sample : TOXAPHENE314
 Misc :
 ALS Vial : 20 Sample Multiplier: 1

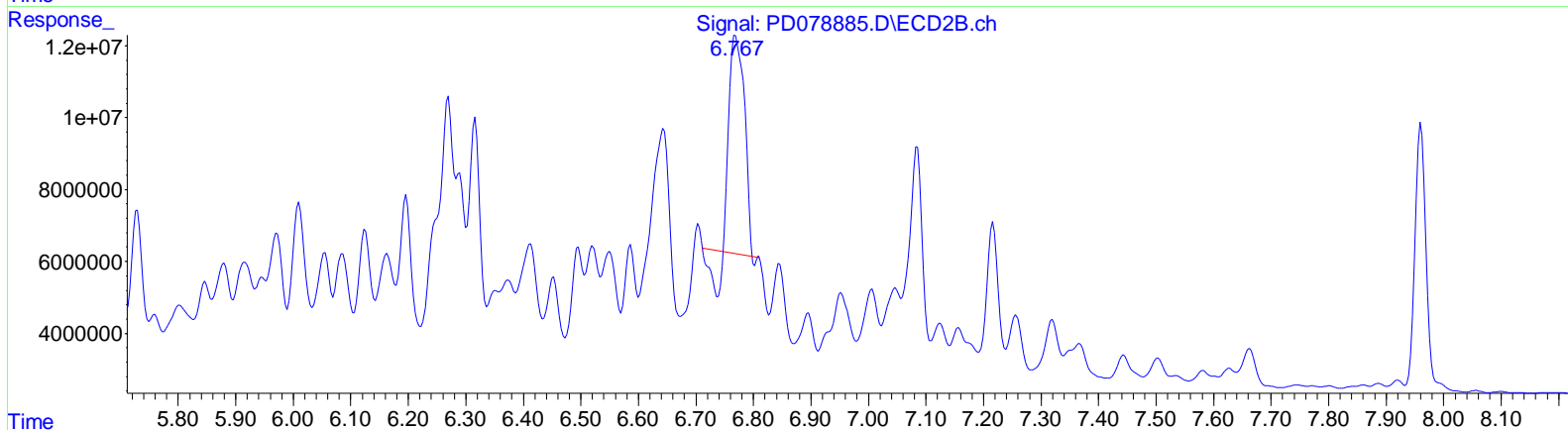
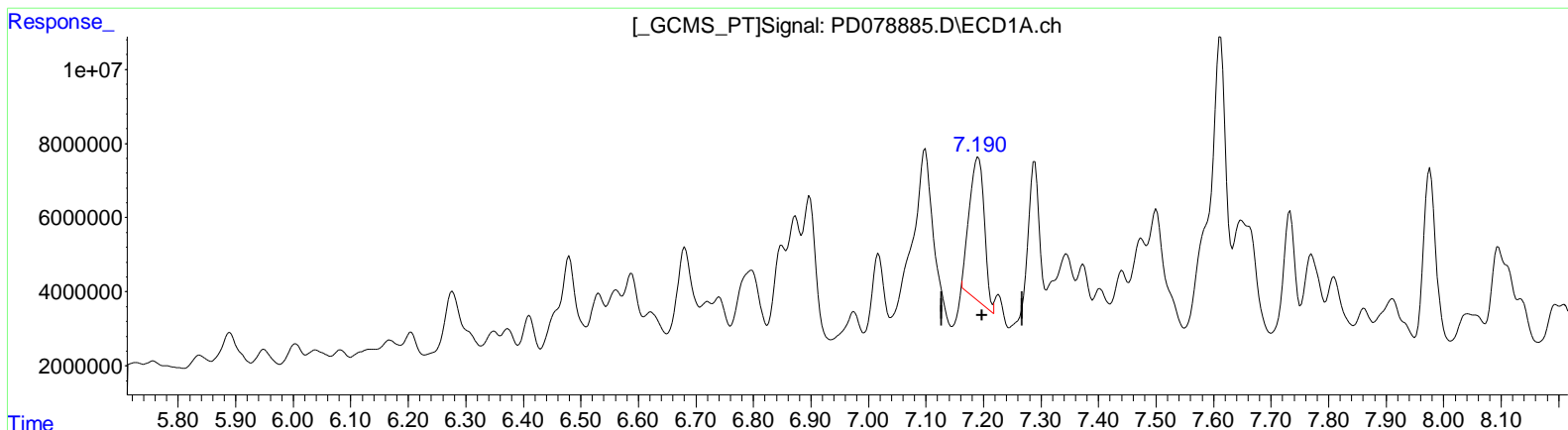
Instrument :
 ECD_D
LabSampleID :
 TOXAPHENE314

Manual Integrations APPROVED

Reviewed By : Abdul Mirza 10/16/2023
 Supervised By : Ankita Jodhani 10/17/2023

Integration File signal 1: autoint1.e
 Integration File signal 2: autoint2.e
 Quant Time: Oct 15 22:40:41 2023
 Quant Method : Z:\pestpcbsrv\HPCHEM1\ECD_D\Method\PD101523CLP.M
 Quant Title : GC Extractables
 QLast Update : Fri Oct 13 16:57:38 2023
 Response via : Initial Calibration
 Integrator: ChemStation

Volume Inj. : 1 µl
 Signal #1 Phase : ZB-MR1 Signal #2 Phase: ZB-MR2
 Signal #1 Info : 30M x 0.32mm x 0.5 Signal #2 Info : 30M x 0.32mm x 0.25µm



QEdit

(25) Toxaphene-4
 7.191min 1680.686 ng/ml
 response 70715917

(25) Toxaphene-4 #2
 6.769min 1501.647 ng/ml
 response 102737858

Data Path : Z:\pestpcbsrv\HPCHEM1\ECD_D\Data\PD101523\
 Data File : PD078885.D
 Signal(s) : Signal #1: ECD1A.ch Signal #2: ECD2B.ch
 Acq On : 13 Oct 2023 20:19
 Operator : ARVAJ
 Sample : TOXAPHENE314
 Misc :
 ALS Vial : 20 Sample Multiplier: 1

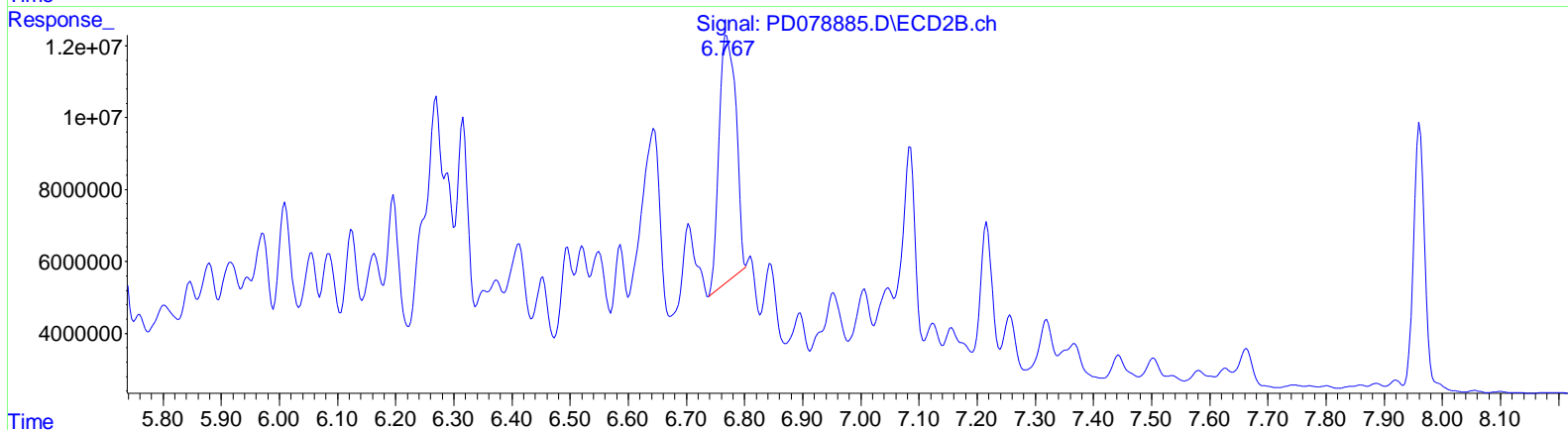
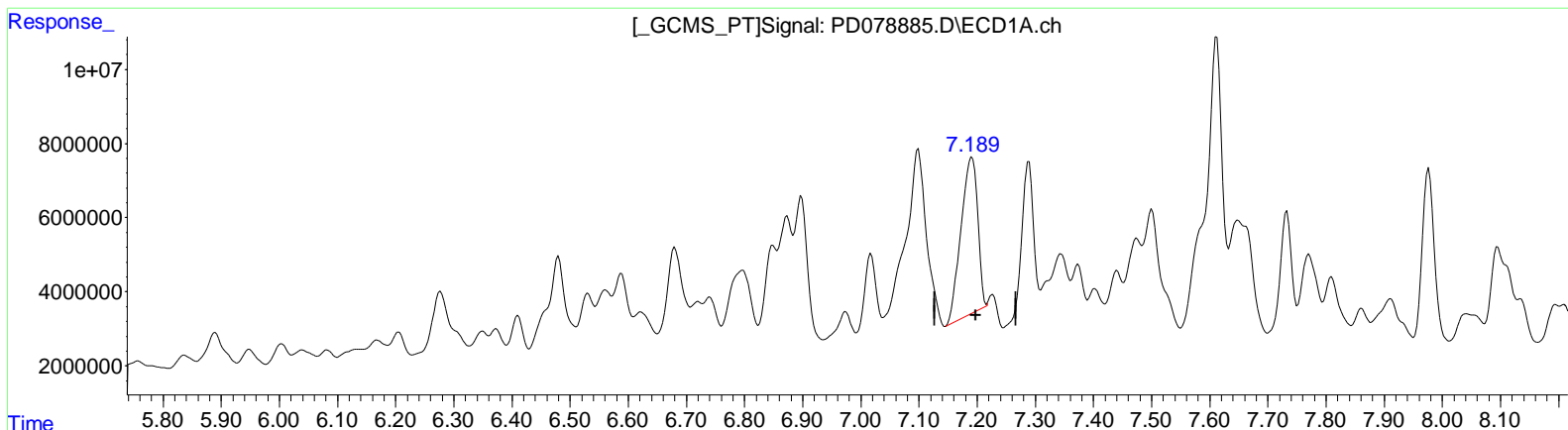
Instrument :
 ECD_D
LabSampleID :
 TOXAPHENE314

Manual Integrations APPROVED

Reviewed By : Abdul Mirza 10/16/2023
 Supervised By : Ankita Jodhani 10/17/2023

Integration File signal 1: autoint1.e
 Integration File signal 2: autoint2.e
 Quant Time: Oct 15 22:40:41 2023
 Quant Method : Z:\pestpcbsrv\HPCHEM1\ECD_D\Method\PD101523CLP.M
 Quant Title : GC Extractables
 QLast Update : Fri Oct 13 16:57:38 2023
 Response via : Initial Calibration
 Integrator: ChemStation

Volume Inj. : 1 µl
 Signal #1 Phase : ZB-MR1 Signal #2 Phase: ZB-MR2
 Signal #1 Info : 30M x 0.32mm x 0.5 Signal #2 Info : 30M x 0.32mm x 0.25µm



(25) Toxaphene-4
 7.189min 2035.376 ng/ml m
 response 85639752

(25) Toxaphene-4 #2
 6.767min 2059.512 ng/ml m
 response 140905206

Data Path : Z:\pestpcbsrv\HPCHEM1\ECD_D\Data\PD101523\
 Data File : PD078885.D
 Signal(s) : Signal #1: ECD1A.ch Signal #2: ECD2B.ch
 Acq On : 13 Oct 2023 20:19
 Operator : ARVAJ
 Sample : TOXAPHENE314
 Misc :
 ALS Vial : 20 Sample Multiplier: 1

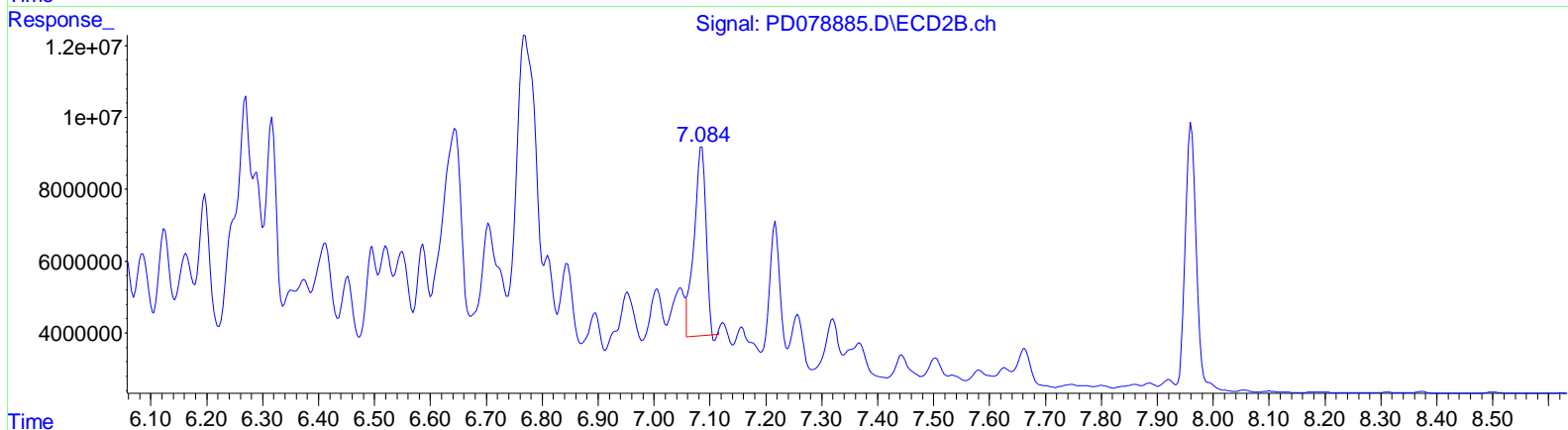
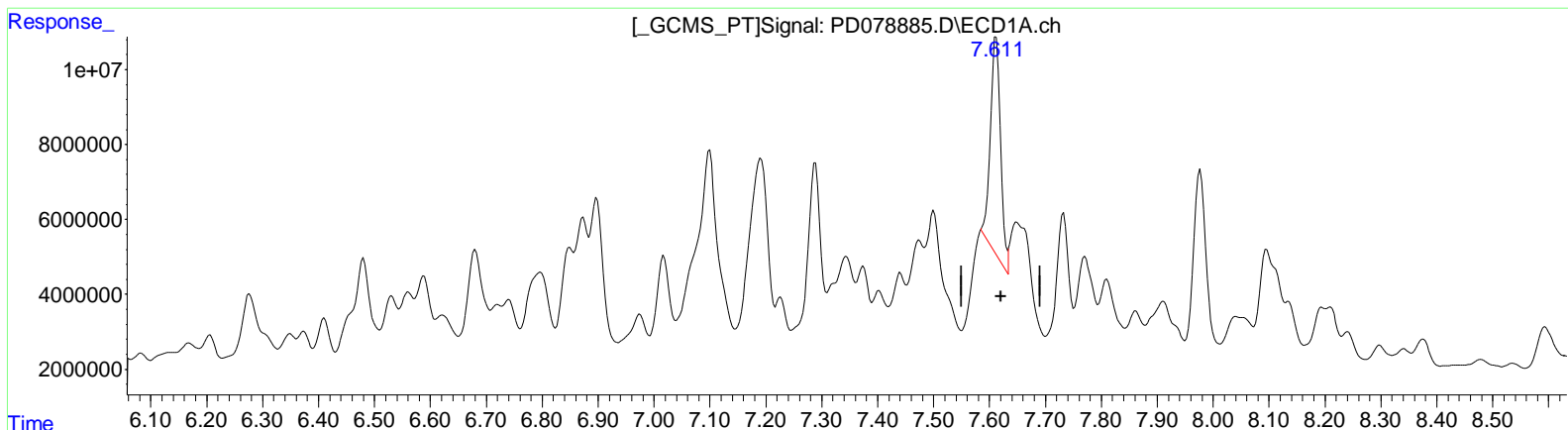
Instrument :
 ECD_D
LabSampleID :
 TOXAPHENE314

Manual Integrations APPROVED

Reviewed By : Abdul Mirza 10/16/2023
 Supervised By : Ankita Jodhani 10/17/2023

Integration File signal 1: autoint1.e
 Integration File signal 2: autoint2.e
 Quant Time: Oct 15 22:40:41 2023
 Quant Method : Z:\pestpcbsrv\HPCHEM1\ECD_D\Method\PD101523CLP.M
 Quant Title : GC Extractables
 QLast Update : Fri Oct 13 16:57:38 2023
 Response via : Initial Calibration
 Integrator: ChemStation

Volume Inj. : 1 µl
 Signal #1 Phase : ZB-MR1 Signal #2 Phase: ZB-MR2
 Signal #1 Info : 30M x 0.32mm x 0.5 Signal #2 Info : 30M x 0.32mm x 0.25µm



QEdit

(26) Toxaphene-5
 7.612min 2373.751 ng/ml
 response 75482619

(26) Toxaphene-5 #2
 7.085min 2504.700 ng/ml
 response 76900040

Data Path : Z:\pestpcbsrv\HPCHEM1\ECD_D\Data\PD101523\
 Data File : PD078885.D
 Signal (s) : Signal #1: ECD1A.ch Signal #2: ECD2B.ch
 Acq On : 13 Oct 2023 20:19
 Operator : ARVAJ
 Sample : TOXAPHENE314
 Misc :
 ALS Vial : 20 Sample Multiplier: 1

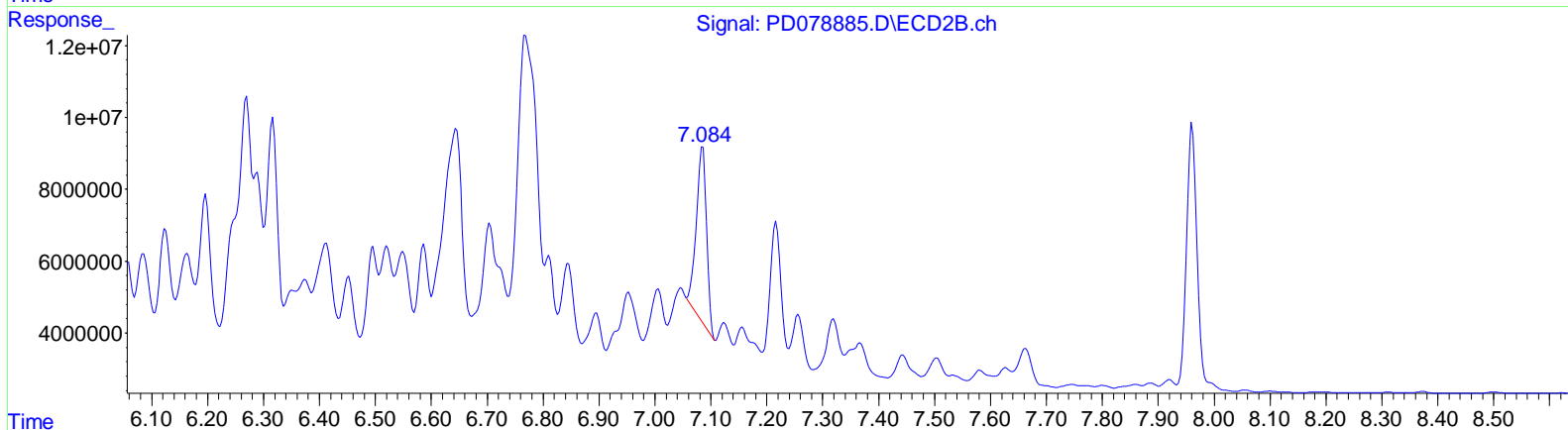
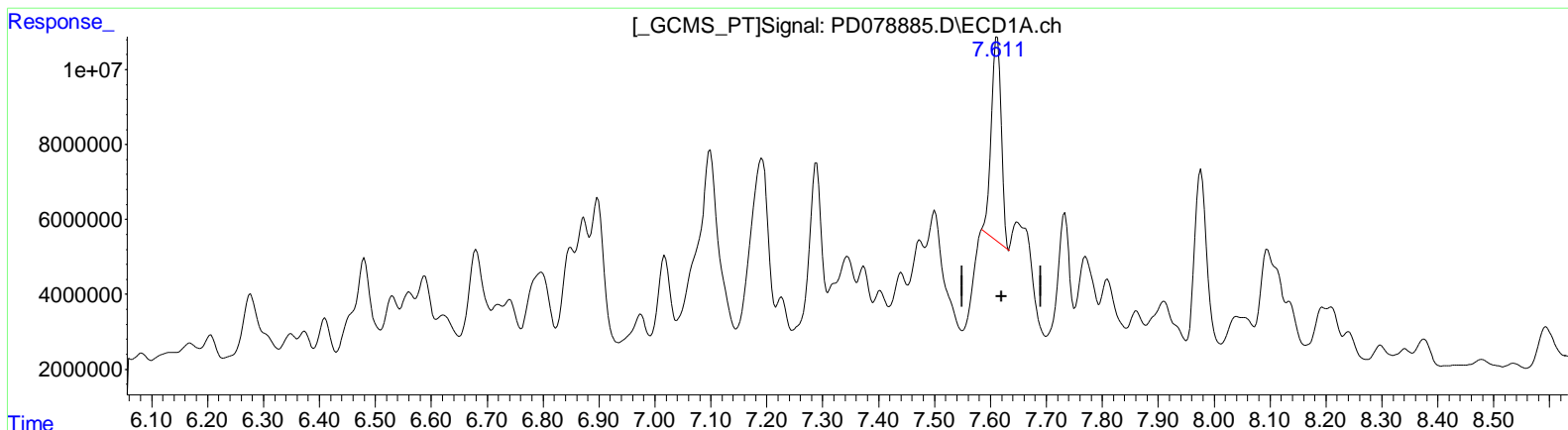
Instrument :
 ECD_D
LabSampleID :
 TOXAPHENE314

Manual Integrations APPROVED

Reviewed By : Abdul Mirza 10/16/2023
 Supervised By : Ankita Jodhani 10/17/2023

Integration File signal 1: autoint1.e
 Integration File signal 2: autoint2.e
 Quant Time: Oct 15 22:40:41 2023
 Quant Method : Z:\pestpcbsrv\HPCHEM1\ECD_D\Method\PD101523CLP.M
 Quant Title : GC Extractables
 QLast Update : Fri Oct 13 16:57:38 2023
 Response via : Initial Calibration
 Integrator: ChemStation

Volume Inj. : 1 µl
 Signal #1 Phase : ZB-MR1 Signal #2 Phase: ZB-MR2
 Signal #1 Info : 30M x 0.32mm x 0.5 Signal #2 Info : 30M x 0.32mm x 0.25µm



QEdit

(26) Toxaphene-5
 7.611min 2071.019 ng/ml m
 response 65856067

(26) Toxaphene-5 #2
 7.084min 2079.100 ng/ml m
 response 63833148

Data Path : Z:\pestpcbsrv\HPCHEM1\ECD_D\Data\PD101523\
 Data File : PD078885.D
 Signal(s) : Signal #1: ECD1A.ch Signal #2: ECD2B.ch
 Acq On : 13 Oct 2023 20:19
 Operator : ARVAJ
 Sample : TOXAPHENE314
 Misc :
 ALS Vial : 20 Sample Multiplier: 1

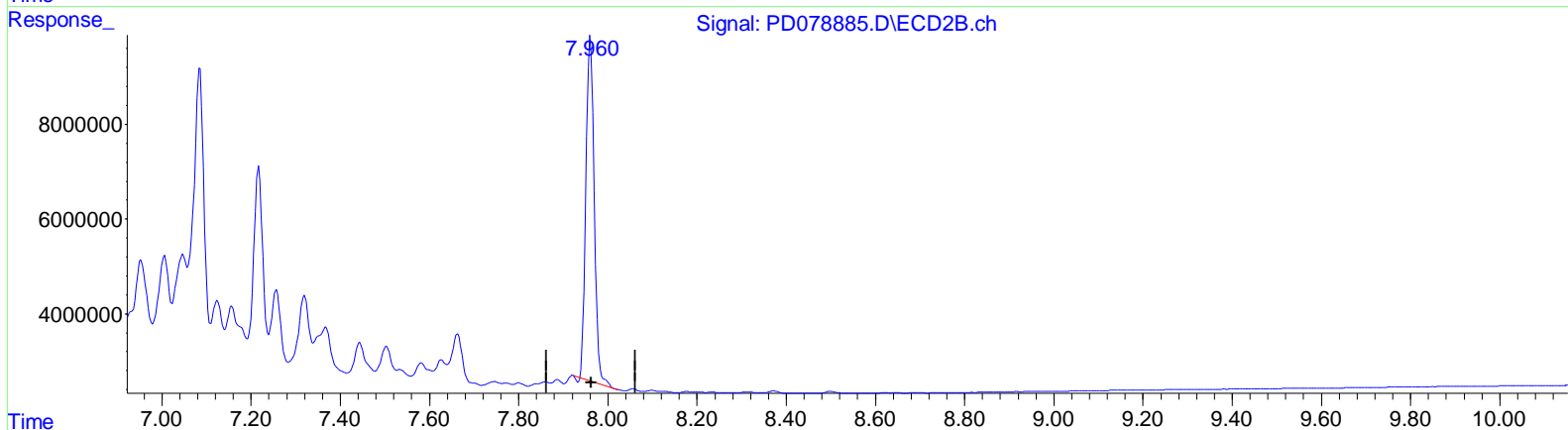
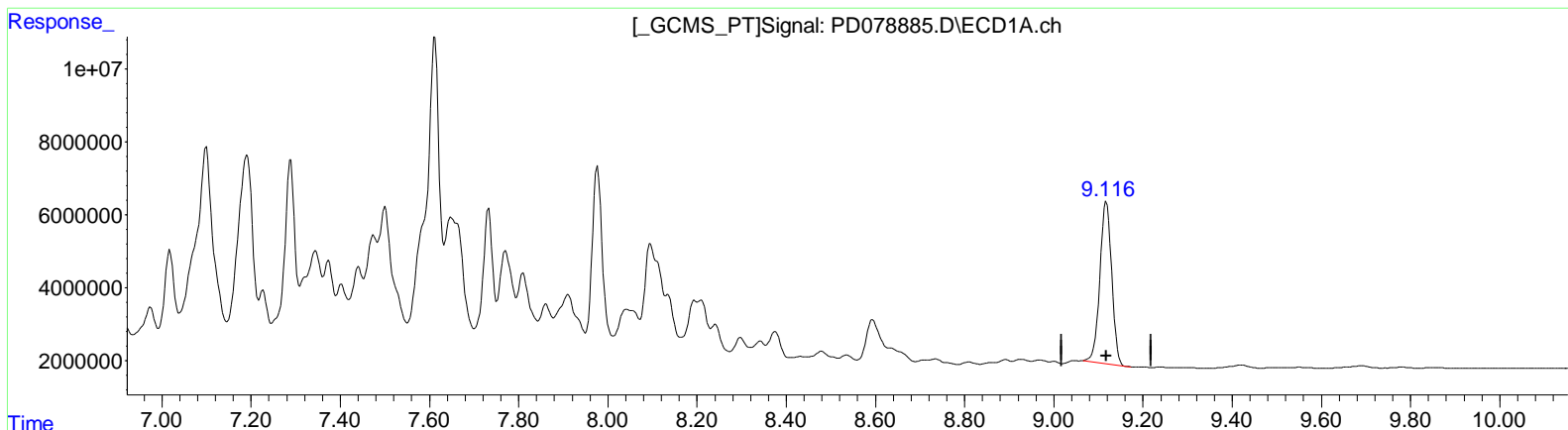
Instrument :
 ECD_D
LabSampleID :
 TOXAPHENE314

Manual IntegrationsAPPROVED

Reviewed By :Abdul Mirza 10/16/2023
 Supervised By :Ankita Jodhani 10/17/2023

Integration File signal 1: autoint1.e
 Integration File signal 2: autoint2.e
 Quant Time: Oct 15 22:40:41 2023
 Quant Method : Z:\pestpcbsrv\HPCHEM1\ECD_D\Method\PD101523CLP.M
 Quant Title : GC Extractables
 QLast Update : Fri Oct 13 16:57:38 2023
 Response via : Initial Calibration
 Integrator: ChemStation

Volume Inj. : 1 µl
 Signal #1 Phase : ZB-MR1 Signal #2 Phase: ZB-MR2
 Signal #1 Info : 30M x 0.32mm x0.5 Signal #2 Info : 30M x 0.32mm x 0.25µm



QEdit

(27) Decachlorobiphenyl (SA)
 9.117min 46.432 ng/ml
 response 81736541

(27) Decachlorobiphenyl #2 (SA)
 7.961min 44.641 ng/ml
 response 93820133

Data Path : Z:\pestpcbsrv\HPCHEM1\ECD_D\Data\PD101523\
 Data File : PD078885.D
 Signal(s) : Signal #1: ECD1A.ch Signal #2: ECD2B.ch
 Acq On : 13 Oct 2023 20:19
 Operator : ARVAJ
 Sample : TOXAPHENE314
 Misc :
 ALS Vial : 20 Sample Multiplier: 1

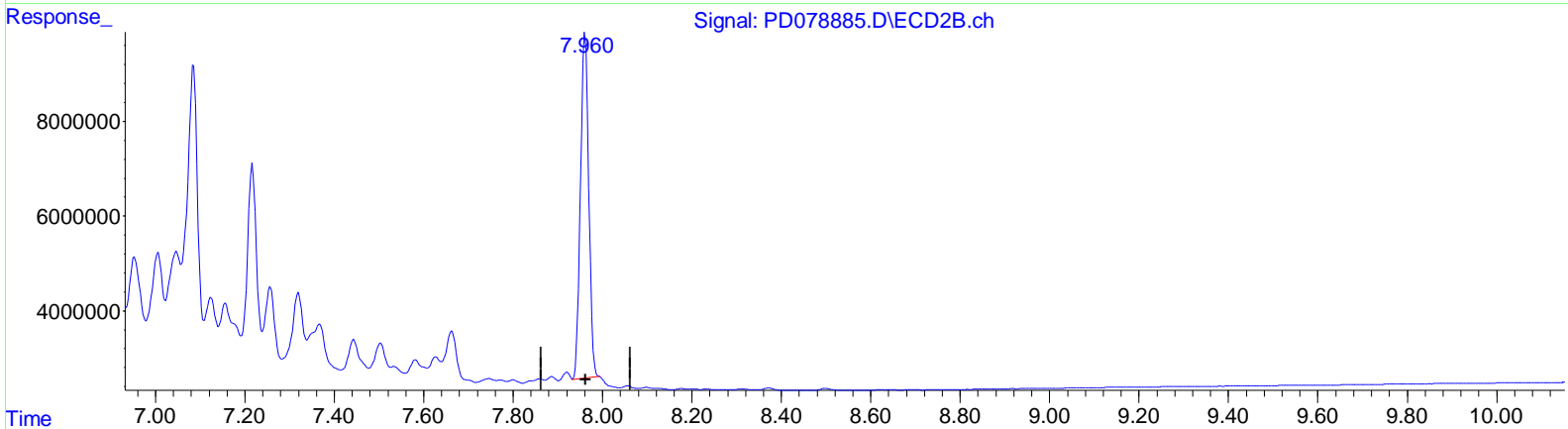
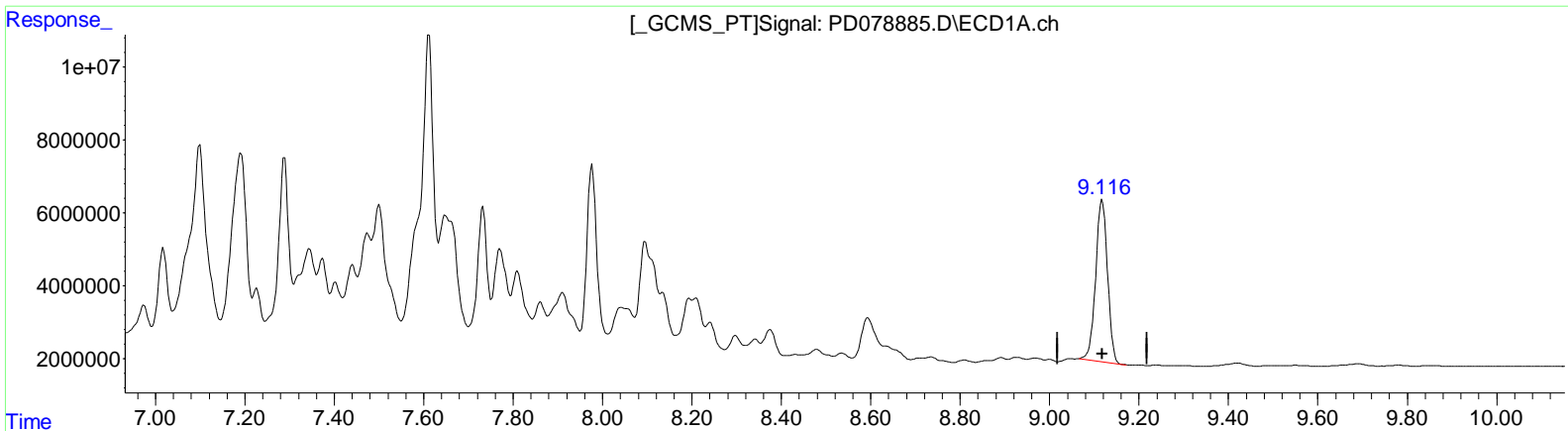
Instrument :
 ECD_D
LabSampleID :
 TOXAPHENE314

Manual Integrations APPROVED

Reviewed By : Abdul Mirza 10/16/2023
 Supervised By : Ankita Jodhani 10/17/2023

Integration File signal 1: autoint1.e
 Integration File signal 2: autoint2.e
 Quant Time: Oct 15 22:40:41 2023
 Quant Method : Z:\pestpcbsrv\HPCHEM1\ECD_D\Method\PD101523CLP.M
 Quant Title : GC Extractables
 QLast Update : Fri Oct 13 16:57:38 2023
 Response via : Initial Calibration
 Integrator: ChemStation

Volume Inj. : 1 µl
 Signal #1 Phase : ZB-MR1 Signal #2 Phase: ZB-MR2
 Signal #1 Info : 30M x 0.32mm x 0.5 Signal #2 Info : 30M x 0.32mm x 0.25µm



QEdit

(27) Decachlorobiphenyl (SA)
 9.117min 46.432 ng/ml
 response 81736541

(27) Decachlorobiphenyl #2 (SA)
 7.960min 44.516 ng/ml m
 response 93557377