

Data Path : Z:\pestpcbsrv\HPCHEM1\ECD\_D\Data\PD101619\  
 Data File : PD055311.D  
 Signal(s) : Signal #1: ECD1A.ch Signal #2: ECD2B.ch  
 Acq On : 16 Oct 2019 12:15  
 Operator : SG\AJ  
 Sample : K5349-12  
 Misc :  
 ALS Vial : 9 Sample Multiplier: 1

Instrument :  
 ECD\_D  
 ClientSampleId :  
 PEST-GPC2-BLANK-SPIKE

Integration File signal 1: autoint1.e  
 Integration File signal 2: autoint2.e  
 Quant Time: Oct 17 03:35:53 2019  
 Quant Method : Z:\pestpcbsrv\HPCHEM1\ECD\_D\Method\PD101519CLP.M  
 Quant Title : GC Extractables  
 QLast Update : Wed Oct 16 04:32:26 2019  
 Response via : Initial Calibration  
 Integrator: ChemStation

Volume Inj. : 1 µl  
 Signal #1 Phase : ZB-MR2 Signal #2 Phase: ZB-MR1  
 Signal #1 Info : 30M x 0.32mm x0.2 Signal #2 Info : 30M x 0.32mm x 0.50µm

| Compound | RT#1 | RT#2 | Resp#1 | Resp#2 | ng/ml | ng/ml |
|----------|------|------|--------|--------|-------|-------|
|----------|------|------|--------|--------|-------|-------|

System Monitoring Compounds

Target Compounds

|        |              |        |        |          |          |           |           |   |
|--------|--------------|--------|--------|----------|----------|-----------|-----------|---|
| 2) A   | alpha-BHC    | 3.716  | 4.376f | 332554   | -171638  | 0.354     | N.D.      | # |
| 3) MA  | gamma-BHC... | 3.993  | 4.632  | 40713745 | 60253075 | 46.739    | 46.774    |   |
| 4) MA  | Heptachlor   | 4.279  | 5.139  | 26690626 | 57759855 | 51.637    | 48.426    |   |
| 5) MB  | Aldrin       | 4.519  | 5.442  | 37815585 | 58087595 | 46.626    | 48.182    |   |
| 6) B   | beta-BHC     | 4.279f | 0.000  | 26690626 | 0        | 65.992    | N.D.      | # |
| 13) MA | Dieldrin     | 5.527  | 6.437  | 74495026 | 119.5E6  | 92.986    | 94.567    |   |
| 14) MA | Endrin       | 5.780  | 6.654  | 59322637 | 89223284 | 91.573    | 90.220    |   |
| 16) A  | 4,4'-DDD     | 5.915  | 0.000  | 1308475  | 0        | 2.251     | N.D.      | # |
| 17) MA | 4,4'-DDT     | 6.150  | 7.074  | 42593589 | 85414550 | 106.238   | 91.392    |   |
| 18) B  | Endrin al... | 6.222  | 0.000  | 1511544  | 0        | 2.424     | N.D.      | # |
| 21) B  | Endrin ke... | 6.917  | 7.676  | 3709032  | 5399582  | 5.200     | 4.572     |   |
| 22)    | Toxaphene-1  | 5.527  | 0.000  | 74495026 | 0        | 16087.642 | N.D.      | # |
| 23)    | Toxaphene-2  | 0.000  | 6.654  | 0        | 89223284 | N.D.      | 11796.202 |   |
| 24)    | Toxaphene-3  | 5.915  | 7.074  | 1308475  | 85414550 | 329.324   | 8254.209  | # |
| 25)    | Toxaphene-4  | 6.150  | 7.074  | 42593589 | 85414550 | 3721.022  | 2909.227  |   |
| 26)    | Toxaphene-5  | 6.801  | 0.000  | 5802852  | 0        | 477.947   | N.D.      | # |

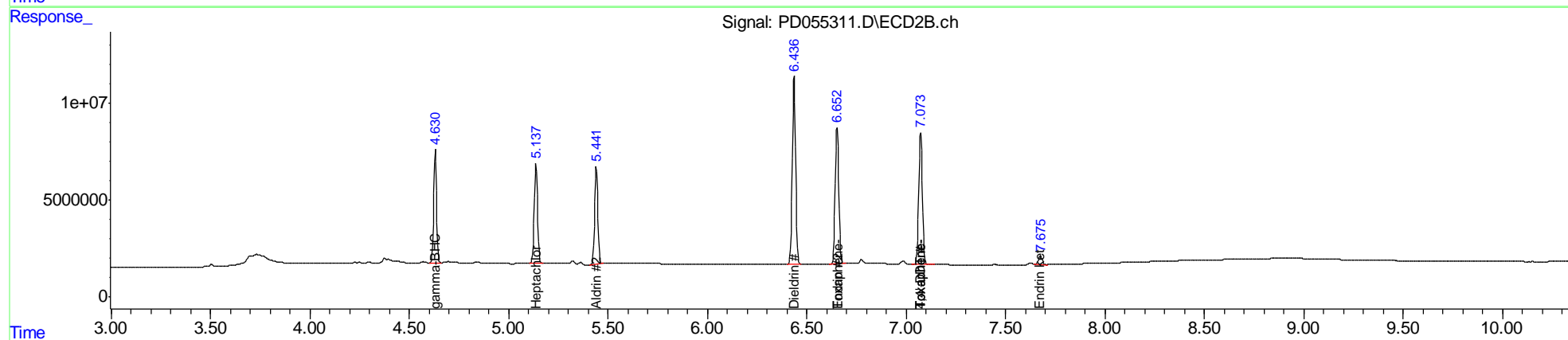
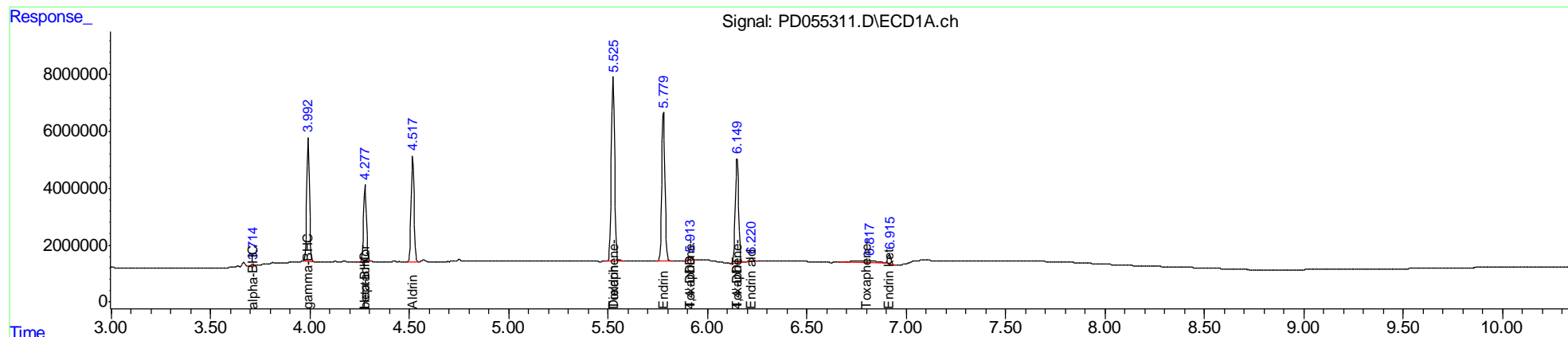
(f)=RT Delta > 1/2 Window (#)=Amounts differ by > 25% (m)=manual int.

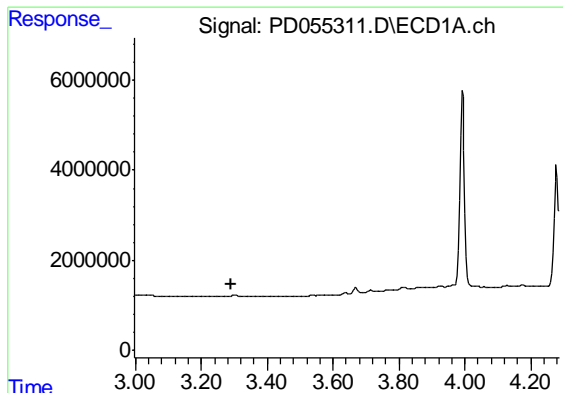
Data Path : Z:\pestpcbsrv\HPCHEM1\ECD\_D\Data\PD101619\  
 Data File : PD055311.D  
 Signal(s) : Signal #1: ECD1A.ch Signal #2: ECD2B.ch  
 Acq On : 16 Oct 2019 12:15  
 Operator : SG\AJ  
 Sample : K5349-12  
 Misc :  
 ALS Vial : 9 Sample Multiplier: 1

Instrument :  
 ECD\_D  
 Client Sampled :  
 PEST-GPC2-BLANK-SPIKE

Integration File signal 1: autoint1.e  
 Integration File signal 2: autoint2.e  
 Quant Time: Oct 17 03:35:53 2019  
 Quant Method : Z:\pestpcbsrv\HPCHEM1\ECD\_D\Method\PD101519CLP.M  
 Quant Title : GC Extractables  
 QLast Update : Wed Oct 16 04:32:26 2019  
 Response via : Initial Calibration  
 Integrator: ChemStation

Volume Inj. : 1 µl  
 Signal #1 Phase : ZB-MR2 Signal #2 Phase: ZB-MR1  
 Signal #1 Info : 30M x 0.32mm x0.2 Signal #2 Info : 30M x 0.32mm x 0.50µm

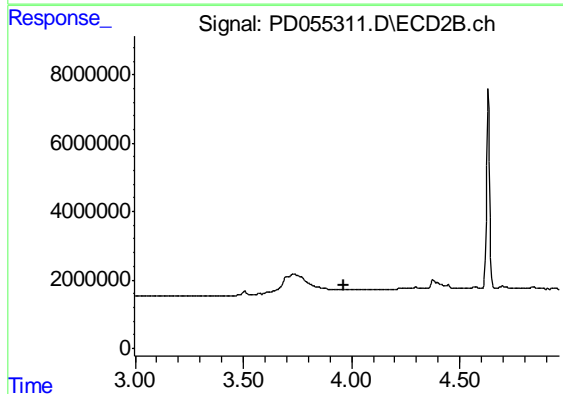




#1 Tetrachloro-m-xylene

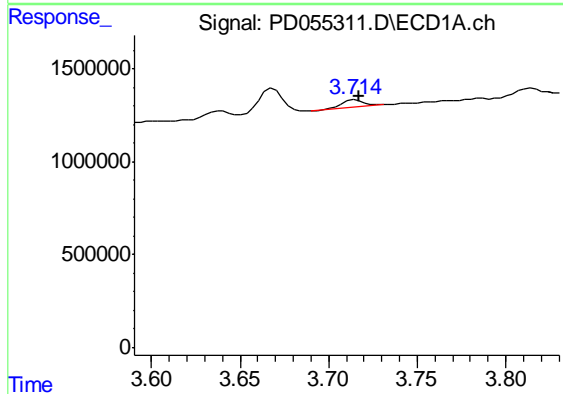
R.T.: 0.000 min  
Exp R.T. : 3.290 min  
Response: 0  
Conc: N.D.

Instrument :  
ECD\_D  
ClientSampleId :  
PEST-GPC2-BLANK-SPIKE



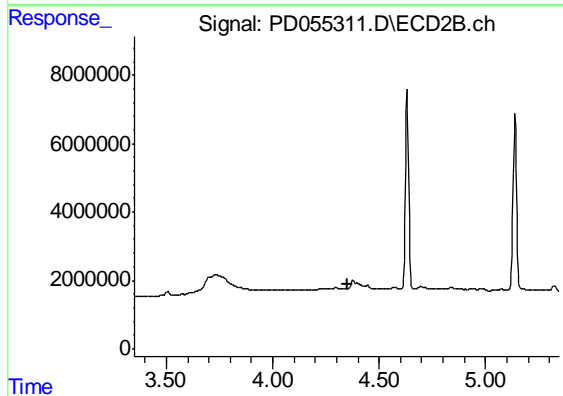
#1 Tetrachloro-m-xylene

R.T.: 0.000 min  
Exp R.T. : 3.963 min  
Response: 0  
Conc: N.D.



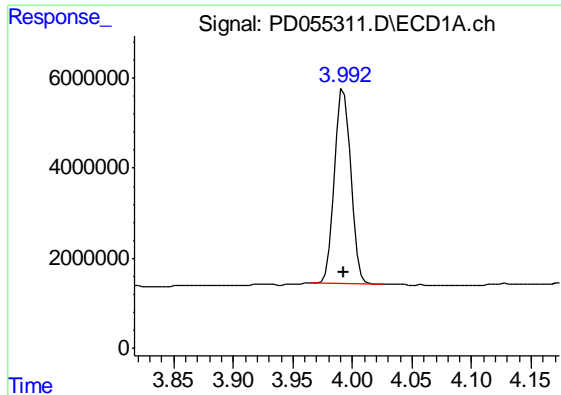
#2 alpha-BHC

R.T.: 3.716 min  
Delta R.T.: -0.002 min  
Response: 332554  
Conc: 0.35 ng/ml



#2 alpha-BHC

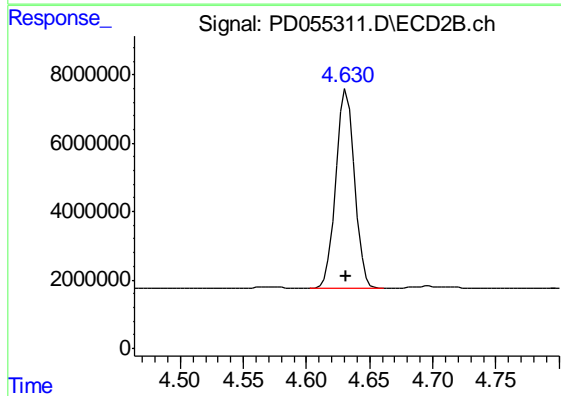
R.T.: 4.376 min  
Delta R.T.: 0.027 min  
Response: -171638  
Conc: N.D.



#3 gamma-BHC (Lindane)

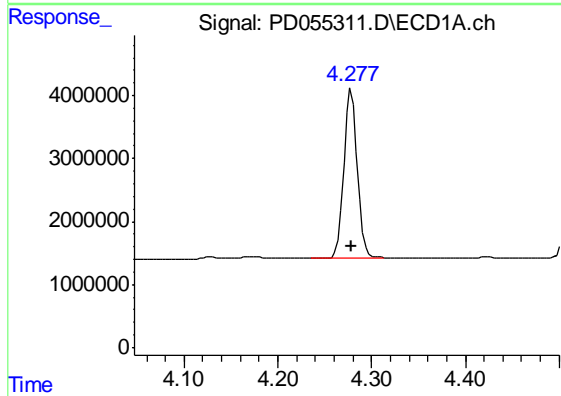
R.T.: 3.993 min  
Delta R.T.: 0.000 min  
Response: 40713745  
Conc: 46.74 ng/ml

Instrument :  
ECD\_D  
ClientSampleId :  
PEST-GPC2-BLANK-SPIKE



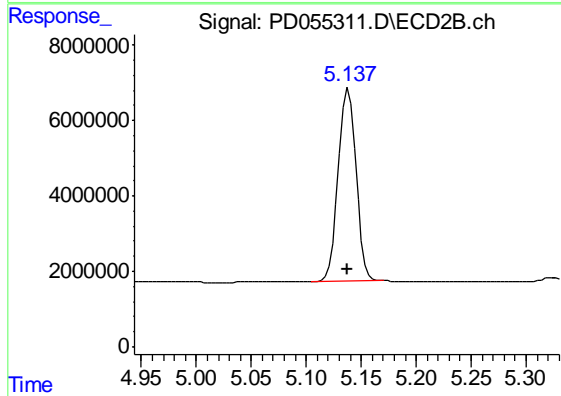
#3 gamma-BHC (Lindane)

R.T.: 4.632 min  
Delta R.T.: 0.000 min  
Response: 60253075  
Conc: 46.77 ng/ml



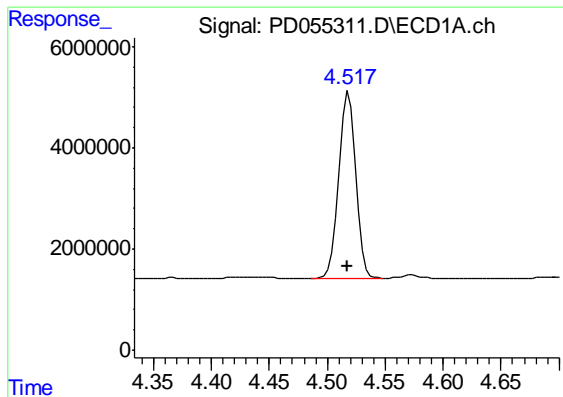
#4 Heptachlor

R.T.: 4.279 min  
Delta R.T.: 0.000 min  
Response: 26690626  
Conc: 51.64 ng/ml



#4 Heptachlor

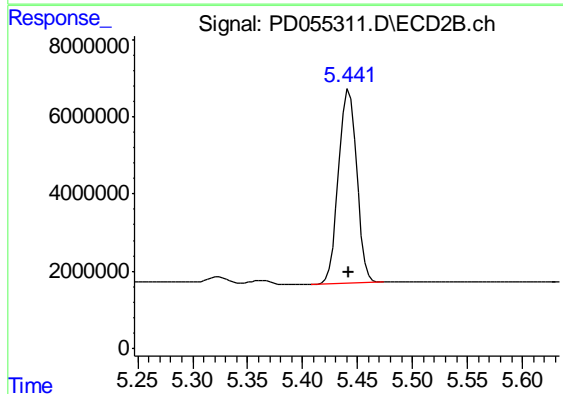
R.T.: 5.139 min  
Delta R.T.: 0.000 min  
Response: 57759855  
Conc: 48.43 ng/ml



#5 Aldrin

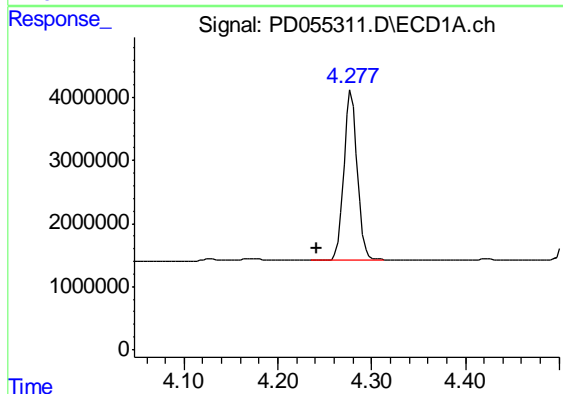
R.T.: 4.519 min  
 Delta R.T.: 0.000 min  
 Response: 37815585  
 Conc: 46.63 ng/ml

Instrument :  
 ECD\_D  
 ClientSampleId :  
 PEST-GPC2-BLANK-SPIKE



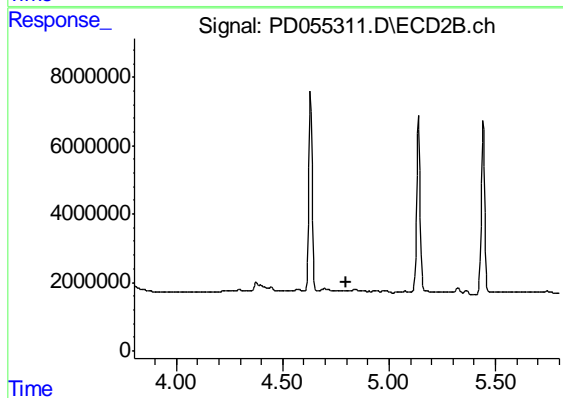
#5 Aldrin

R.T.: 5.442 min  
 Delta R.T.: 0.000 min  
 Response: 58087595  
 Conc: 48.18 ng/ml



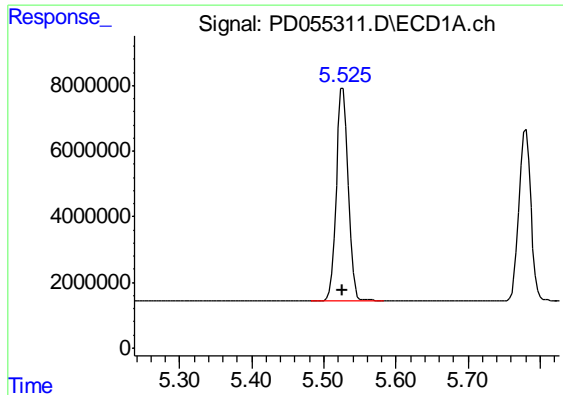
#6 beta-BHC

R.T.: 4.279 min  
 Delta R.T.: 0.037 min  
 Response: 26690626  
 Conc: 65.99 ng/ml



#6 beta-BHC

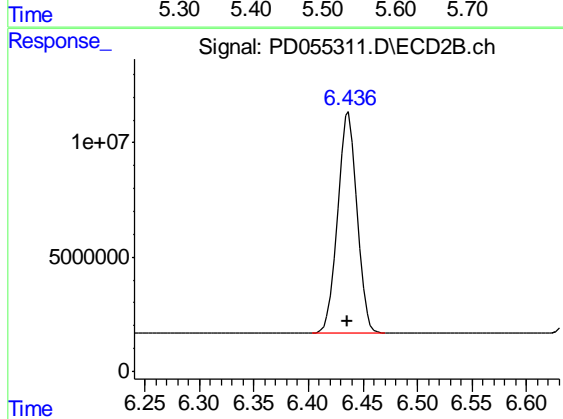
R.T.: 0.000 min  
 Exp R.T. : 4.800 min  
 Response: 0  
 Conc: N.D.



#13 Dieldrin

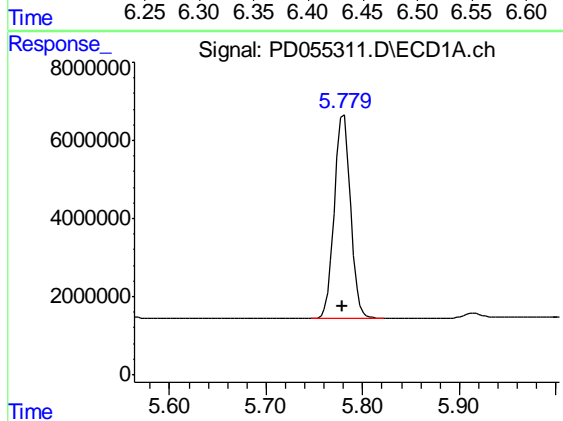
R.T.: 5.527 min  
 Delta R.T.: 0.001 min  
 Response: 74495026  
 Conc: 92.99 ng/ml

Instrument :  
 ECD\_D  
 ClientSampleId :  
 PEST-GPC2-BLANK-SPIKE



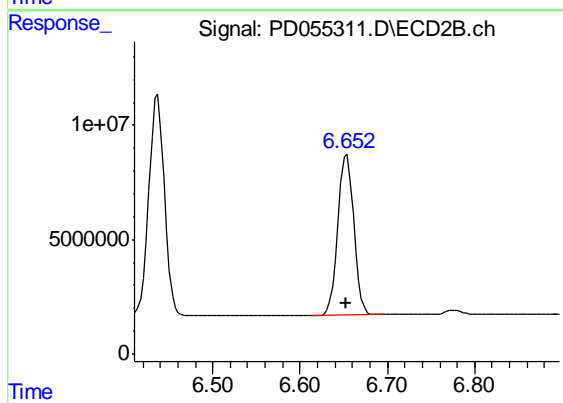
#13 Dieldrin

R.T.: 6.437 min  
 Delta R.T.: 0.000 min  
 Response: 119466313  
 Conc: 94.57 ng/ml



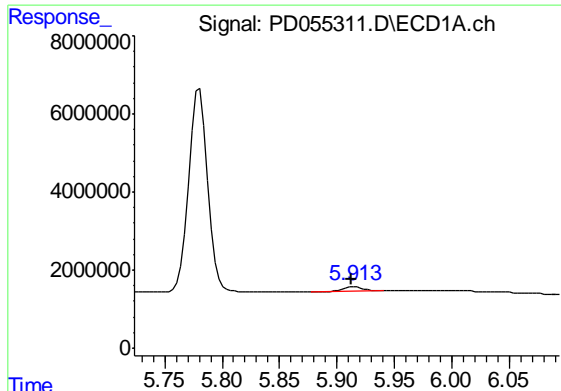
#14 Endrin

R.T.: 5.780 min  
 Delta R.T.: 0.001 min  
 Response: 59322637  
 Conc: 91.57 ng/ml



#14 Endrin

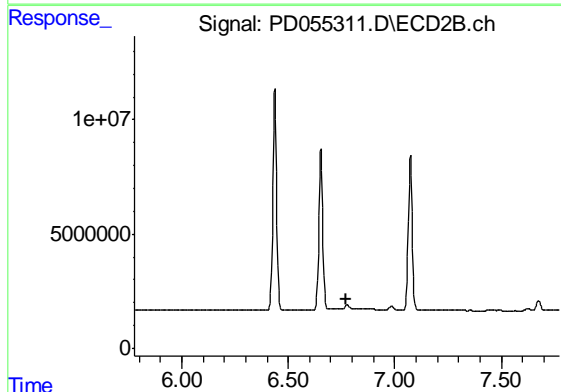
R.T.: 6.654 min  
 Delta R.T.: 0.000 min  
 Response: 89223284  
 Conc: 90.22 ng/ml



#16 4,4'-DDD

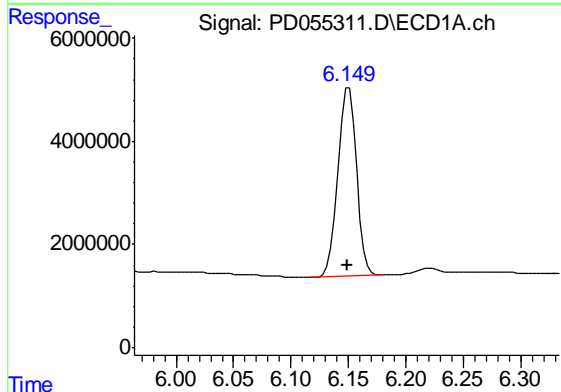
R.T.: 5.915 min  
 Delta R.T.: 0.002 min  
 Response: 1308475  
 Conc: 2.25 ng/ml

Instrument :  
 ECD\_D  
 ClientSampleId :  
 PEST-GPC2-BLANK-SPIKE



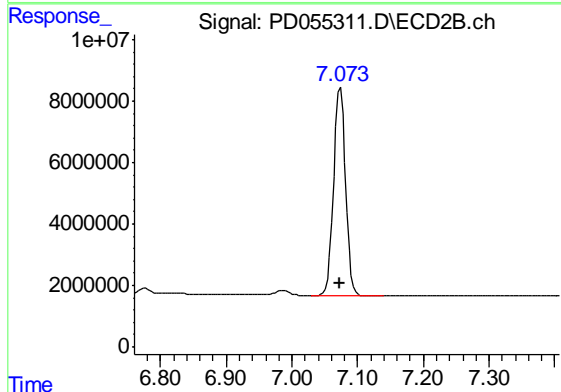
#16 4,4'-DDD

R.T.: 0.000 min  
 Exp R.T. : 6.775 min  
 Response: 0  
 Conc: N.D.



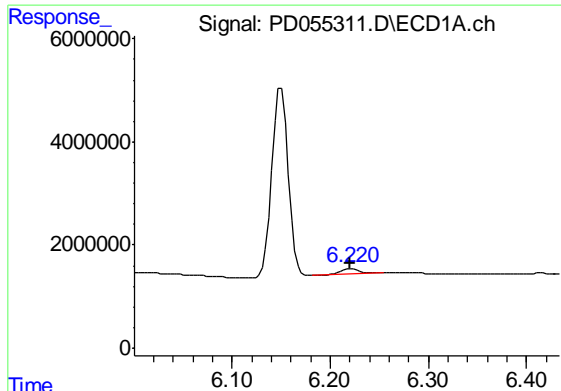
#17 4,4'-DDT

R.T.: 6.150 min  
 Delta R.T.: 0.001 min  
 Response: 42593589  
 Conc: 106.24 ng/ml



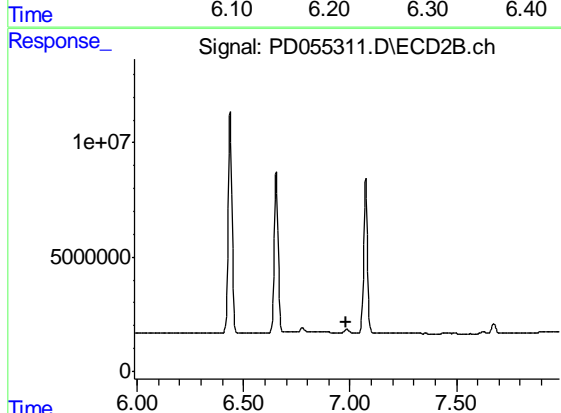
#17 4,4'-DDT

R.T.: 7.074 min  
 Delta R.T.: 0.000 min  
 Response: 85414550  
 Conc: 91.39 ng/ml

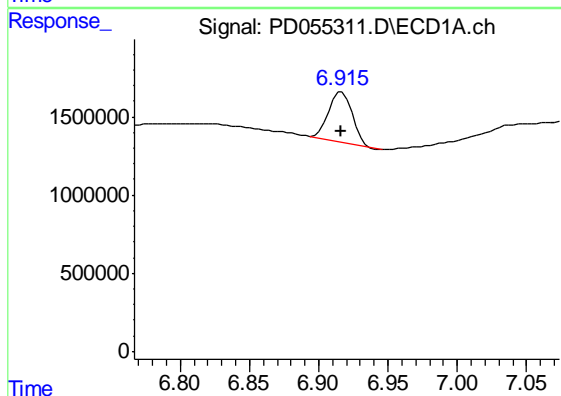


#18 Endrin aldehyde  
 R.T.: 6.222 min  
 Delta R.T.: 0.002 min  
 Response: 1511544  
 Conc: 2.42 ng/ml

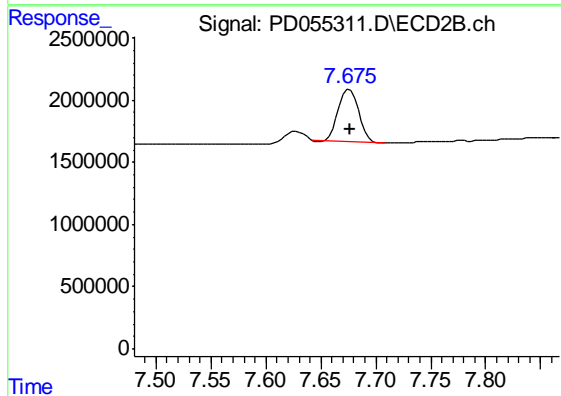
**Instrument :**  
 ECD\_D  
**ClientSampleId :**  
 PEST-GPC2-BLANK-SPIKE



#18 Endrin aldehyde  
 R.T.: 0.000 min  
 Exp R.T. : 6.985 min  
 Response: 0  
 Conc: N.D.

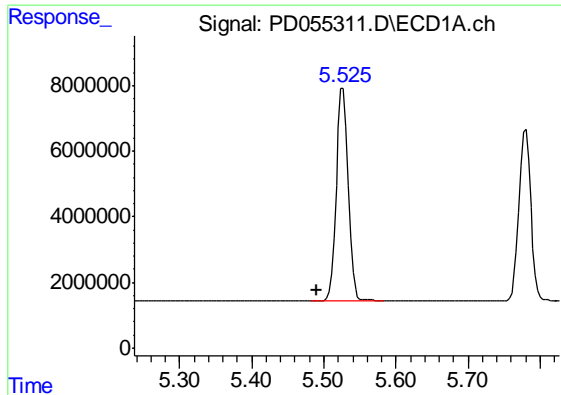


#21 Endrin ketone  
 R.T.: 6.917 min  
 Delta R.T.: 0.000 min  
 Response: 3709032  
 Conc: 5.20 ng/ml



#21 Endrin ketone  
 R.T.: 7.676 min  
 Delta R.T.: 0.000 min  
 Response: 5399582  
 Conc: 4.57 ng/ml

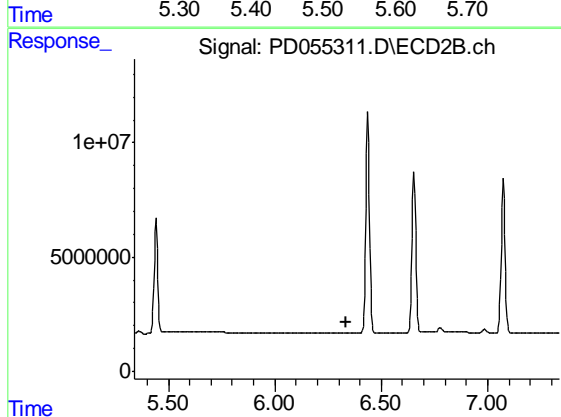




#22 Toxaphene-1

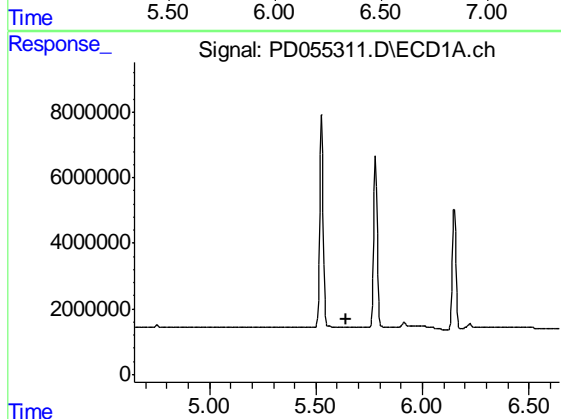
R.T.: 5.527 min  
 Delta R.T.: 0.036 min  
 Response: 74495026  
 Conc: 16087.64 ng/ml

Instrument :  
 ECD\_D  
 ClientSampleId :  
 PEST-GPC2-BLANK-SPIKE



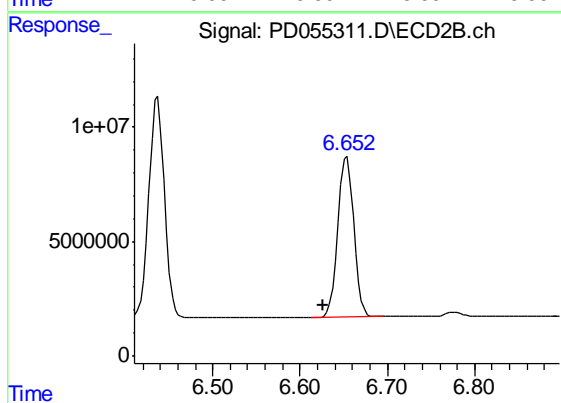
#22 Toxaphene-1

R.T.: 0.000 min  
 Exp R.T. : 6.338 min  
 Response: 0  
 Conc: N.D.



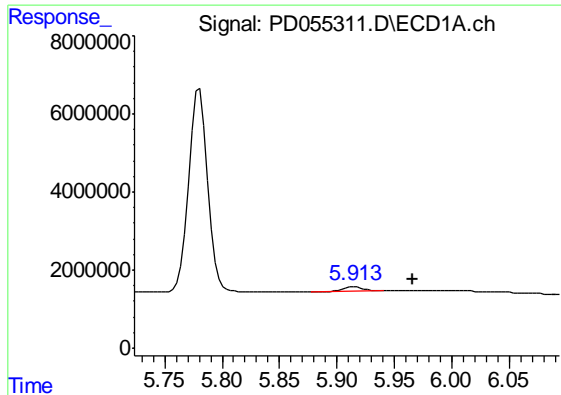
#23 Toxaphene-2

R.T.: 0.000 min  
 Exp R.T. : 5.645 min  
 Response: 0  
 Conc: N.D.



#23 Toxaphene-2

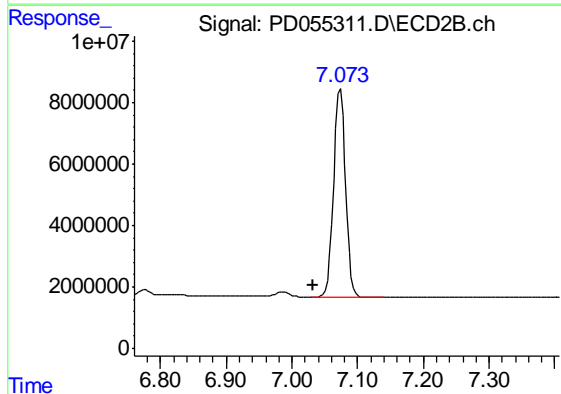
R.T.: 6.654 min  
 Delta R.T.: 0.027 min  
 Response: 89223284  
 Conc: 11796.20 ng/ml



#24 Toxaphene-3

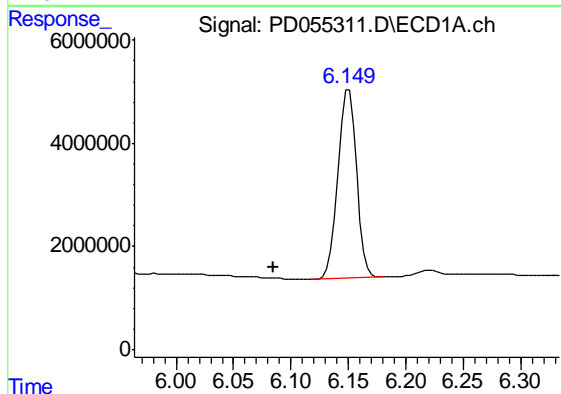
R.T.: 5.915 min  
 Delta R.T.: -0.052 min  
 Response: 1308475  
 Conc: 329.32 ng/ml

Instrument :  
 ECD\_D  
 ClientSampleId :  
 PEST-GPC2-BLANK-SPIKE



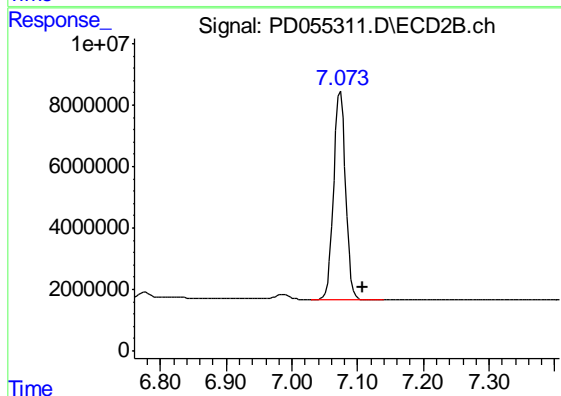
#24 Toxaphene-3

R.T.: 7.074 min  
 Delta R.T.: 0.042 min  
 Response: 85414550  
 Conc: 8254.21 ng/ml



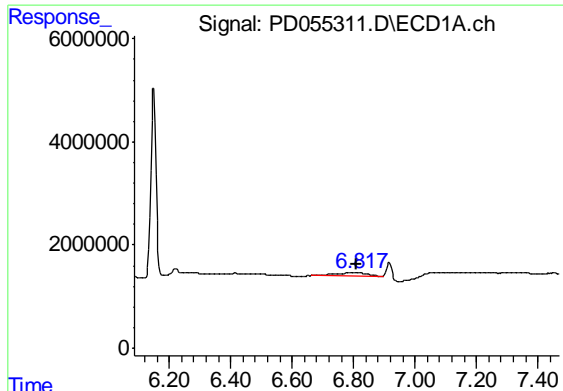
#25 Toxaphene-4

R.T.: 6.150 min  
 Delta R.T.: 0.065 min  
 Response: 42593589  
 Conc: 3721.02 ng/ml



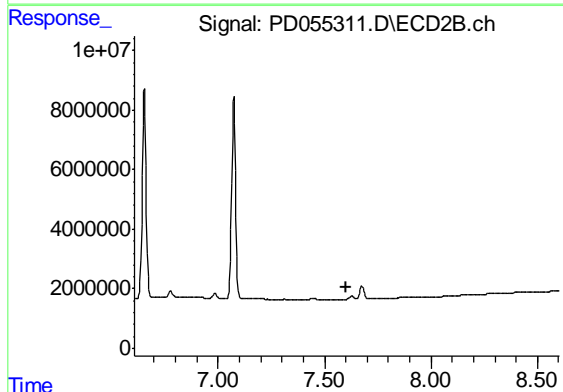
#25 Toxaphene-4

R.T.: 7.074 min  
 Delta R.T.: -0.034 min  
 Response: 85414550  
 Conc: 2909.23 ng/ml

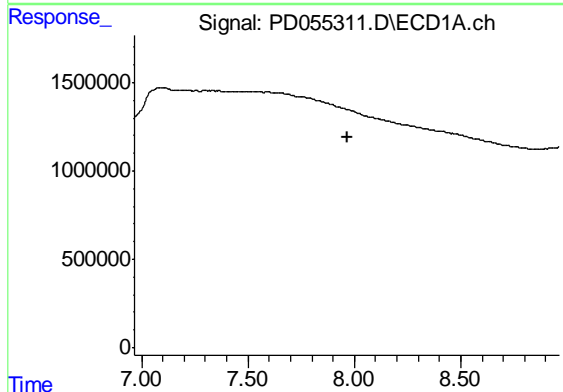


#26 Toxaphene-5  
 R.T.: 6.801 min  
 Delta R.T.: -0.008 min  
 Response: 5802852  
 Conc: 477.95 ng/ml

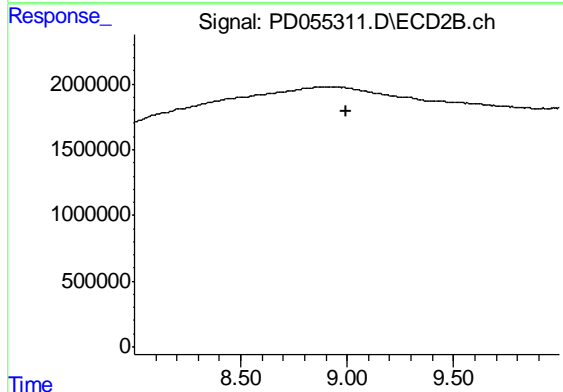
**Instrument :**  
 ECD\_D  
**ClientSampleId :**  
 PEST-GPC2-BLANK-SPIKE



#26 Toxaphene-5  
 R.T.: 0.000 min  
 Exp R.T. : 7.605 min  
 Response: 0  
 Conc: N.D.



#27 Decachlorobiphenyl  
 R.T.: 0.000 min  
 Exp R.T. : 7.966 min  
 Response: 0  
 Conc: N.D.



#27 Decachlorobiphenyl  
 R.T.: 0.000 min  
 Exp R.T. : 8.998 min  
 Response: 0  
 Conc: N.D.