

Data Path : Z:\pestpcbsrv\HPCHEM1\ECD_D\Data\PD101621\
 Data File : PD066283.D
 Signal(s) : Signal #1: ECD1A.ch Signal #2: ECD2B.ch
 Acq On : 16 Oct 2021 09:54
 Operator : AR\AJ
 Sample : INDA201
 Misc :
 ALS Vial : 11 Sample Multiplier: 1

Instrument :
 ECD_D
ClientSampled :
 INDA2016

Manual Integrations
APPROVED
 mohammad
 10/20/2021 2:48:09 PM

Integration File signal 1: autoint1.e
 Integration File signal 2: autoint2.e
 Quant Time: Oct 18 23:28:12 2021
 Quant Method : Z:\pestpcbsrv\HPCHEM1\ECD_D\Method\PD101621CLP.M
 Quant Title : GC Extractables
 QLast Update : Mon Oct 18 23:27:37 2021
 Response via : Initial Calibration
 Integrator: ChemStation

Volume Inj. : 1 µl
 Signal #1 Phase : ZB-MR2 Signal #2 Phase: ZB-MR1
 Signal #1 Info : 30M x 0.32mm x0.2 Signal #2 Info : 30M x 0.32mm x 0.50µm

Compound	RT#1	RT#2	Resp#1	Resp#2	ng/ml	ng/ml

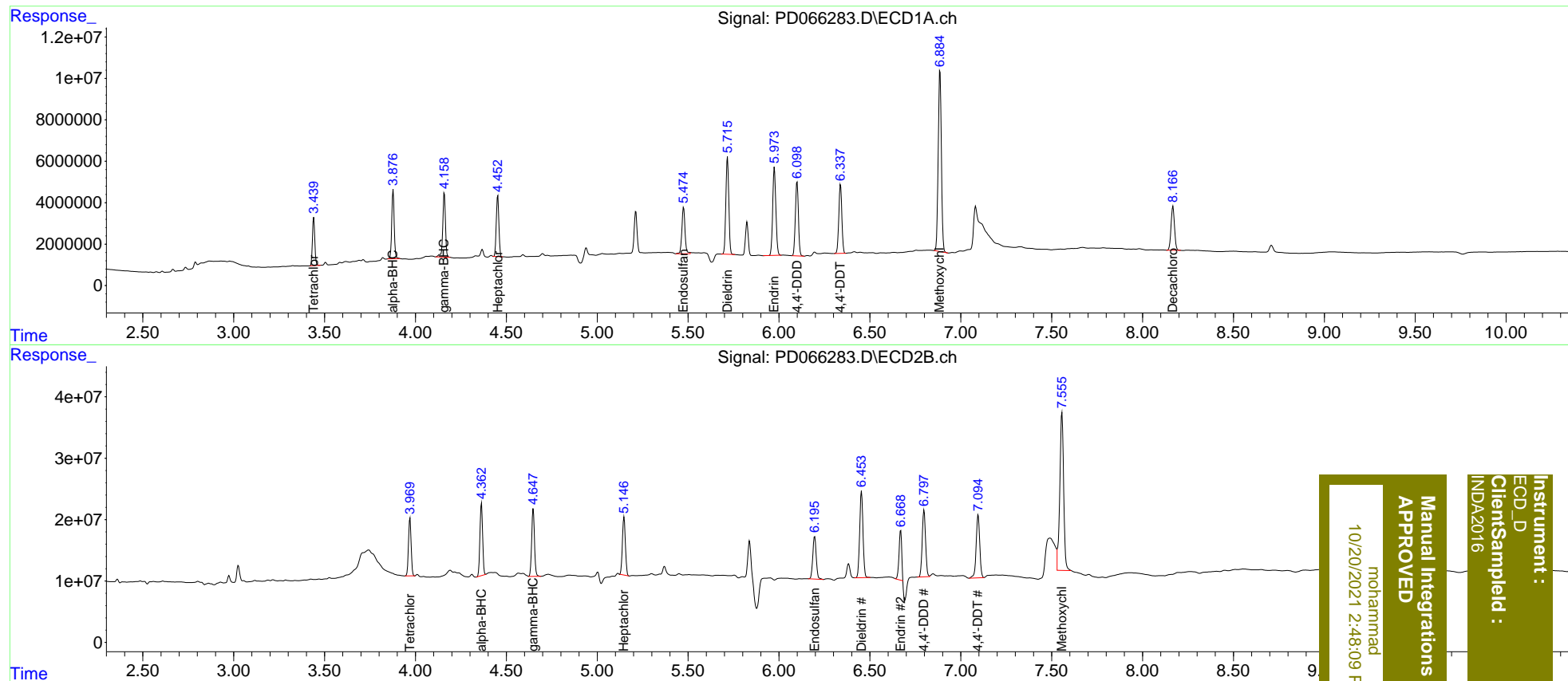
System Monitoring Compounds						
1) SA Tetrachlo...	3.440	3.970	21064735	95932198	10.258	10.630
27) SA Decachlor...	8.167	9.021	27940352	99909347	20.279	20.420
Target Compounds						
2) A alpha-BHC	3.877	4.363	31154682	122.7E6	9.921	10.463
3) MA gamma-BHC...	4.159	4.648	31704143	117.5E6	10.396	10.550
4) MA Heptachlor	4.453	5.148	29293112	107.1E6	9.886	10.359
9) A Endosulfan I	5.475	6.196	26758448	91277614	10.631	10.651
13) MA Dieldrin	5.717	6.454	52837347	177.8E6	19.402	20.806
14) MA Endrin	5.975	6.668	51687086	82691825	21.763	14.705m#
16) A 4,4'-DDD	6.100	6.798	41643666	138.8E6	19.743	20.556
17) MA 4,4'-DDT	6.339	7.096	38682542	140.6E6	19.026	21.374
20) A Methoxychlor	6.886	7.555	105.6E6	378.6E6	99.642	116.530m

(f)=RT Delta > 1/2 Window (#)=Amounts differ by > 25% (m)=manual int.

Data Path : Z:\pestpcbsrv\HPCHEM1\ECD_D\Data\PD101621\
 Data File : PD066283.D
 Signal(s) : Signal #1: ECD1A.ch Signal #2: ECD2B.ch
 Acq On : 16 Oct 2021 09:54
 Operator : AR\AJ
 Sample : INDA201
 Misc :
 ALS Vial : 11 Sample Multiplier: 1

Integration File signal 1: autoint1.e
 Integration File signal 2: autoint2.e
 Quant Time: Oct 18 23:28:12 2021
 Quant Method : Z:\pestpcbsrv\HPCHEM1\ECD_D\Method\PD101621CLP.M
 Quant Title : GC Extractables
 QLast Update : Mon Oct 18 23:27:37 2021
 Response via : Initial Calibration
 Integrator: ChemStation

Volume Inj. : 1 µl
 Signal #1 Phase : ZB-MR2 Signal #2 Phase: ZB-MR1
 Signal #1 Info : 30M x 0.32mm x0.2 Signal #2 Info : 30M x 0.32mm x 0.50µm



Instrument :
 ECD_D
 Client Sampled :
 INDA2016

Manual Integrations
 APPROVED
 mohammad
 10/20/2021 2:48:09 PM