

Data Path : Z:\pestpcbsrv\HPCHEM1\ECD_D\Data\PD101621\
 Data File : PD066316.D
 Signal(s) : Signal #1: ECD1A.ch Signal #2: ECD2B.ch
 Acq On : 16 Oct 2021 17:29
 Operator : AR\AJ
 Sample : PEM115
 Misc :
 ALS Vial : 3 Sample Multiplier: 1

Instrument :
 ECD_D
ClientSampled :
 PEM115

Manual Integrations
APPROVED
 mohammad
 10/20/2021 2:48:27 PM

Integration File signal 1: autoint1.e
 Integration File signal 2: autoint2.e
 Quant Time: Oct 19 11:45:46 2021
 Quant Method : Z:\pestpcbsrv\HPCHEM1\ECD_D\Method\PD101621CLP.M
 Quant Title : GC Extractables
 QLast Update : Tue Oct 19 10:18:55 2021
 Response via : Initial Calibration
 Integrator: ChemStation

Volume Inj. : 1 µl
 Signal #1 Phase : ZB-MR2 Signal #2 Phase: ZB-MR1
 Signal #1 Info : 30M x 0.32mm x0.2 Signal #2 Info : 30M x 0.32mm x 0.50µm

Compound	RT#1	RT#2	Resp#1	Resp#2	ng/ml	ng/ml

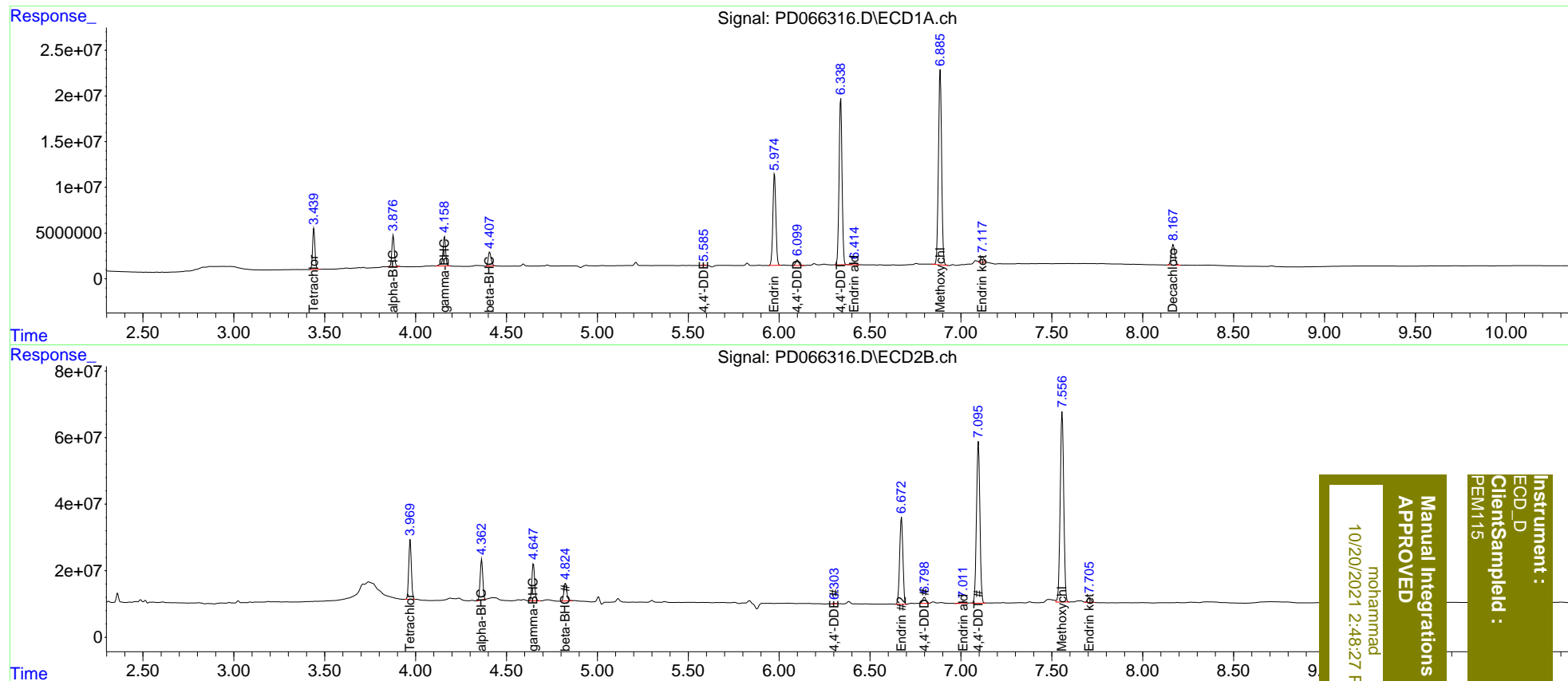
System Monitoring Compounds						
1) SA Tetrachlo...	3.441	3.971	40650574	180.1E6	19.908	20.210
27) SA Decachlor...	8.168	9.021	29875425	115.4E6	21.974	24.295
Target Compounds						
2) A alpha-BHC	3.877	4.364	32013916	124.7E6	10.261	10.733
3) MA gamma-BHC...	4.159	4.648	33099717	119.3E6	10.723	10.806
6) B beta-BHC	4.407	4.825	16606277	59186130	12.472m	11.367
12) B 4,4'-DDE	5.585	6.303	607280	1464436	0.242m	0.184m
14) MA Endrin	5.975	6.673	114.5E6	325.0E6	48.148	61.413 #
16) A 4,4'-DDD	6.101	6.800	7209460	23710938	3.472	3.554
17) MA 4,4'-DDT	6.339	7.096	207.8E6	636.8E6	104.421	97.094
18) B Endrin al...	6.415	7.012	2732512	7573853	1.745	1.429
20) A Methoxychlor	6.886	7.557	259.2E6	777.3E6	250.010	239.336
21) B Endrin ke...	7.117	7.705	7841086	19518831	3.395m	2.721m

(f)=RT Delta > 1/2 Window (#)=Amounts differ by > 25% (m)=manual int.

Data Path : Z:\pestpcbsrv\HPCHEM1\ECD_D\Data\PD101621\
 Data File : PD066316.D
 Signal(s) : Signal #1: ECD1A.ch Signal #2: ECD2B.ch
 Acq On : 16 Oct 2021 17:29
 Operator : AR\AJ
 Sample : PEM115
 Misc :
 ALS Vial : 3 Sample Multiplier: 1

Integration File signal 1: autoint1.e
 Integration File signal 2: autoint2.e
 Quant Time: Oct 19 11:45:46 2021
 Quant Method : Z:\pestpcbsrv\HPCHEM1\ECD_D\Method\PD101621CLP.M
 Quant Title : GC Extractables
 QLast Update : Tue Oct 19 10:18:55 2021
 Response via : Initial Calibration
 Integrator: ChemStation

Volume Inj. : 1 µl
 Signal #1 Phase : ZB-MR2 Signal #2 Phase: ZB-MR1
 Signal #1 Info : 30M x 0.32mm x0.2 Signal #2 Info : 30M x 0.32mm x 0.50µm



Instrument :
 ECD_D
 Client Sample Id :
 PEM115

Manual Integrations
 APPROVED
 mohammad
 10/20/2021 2:48:27 PM