

Data Path : Z:\pestpcbsrv\HPCHEM1\ECD_D\Data\PD101623\
 Data File : PD078899.D
 Signal(s) : Signal #1: ECD1A.ch Signal #2: ECD2B.ch
 Acq On : 17 Oct 2023 02:10
 Operator : AR\AJ
 Sample : INDA301
 Misc :
 ALS Vial : 14 Sample Multiplier: 1

Instrument :
 ECD_D
 ClientSampleId :

Integration File signal 1: autoint1.e
 Integration File signal 2: autoint2.e
 Quant Time: Oct 17 05:15:54 2023
 Quant Method : Z:\pestpcbsrv\HPCHEM1\ECD_D\Method\PD101623CLP-TCLP.M
 Quant Title : GC Extractables
 QLast Update : Tue Oct 17 05:13:23 2023
 Response via : Initial Calibration
 Integrator: ChemStation

Volume Inj. : 1 µl
 Signal #1 Phase : ZB-MR2 Signal #2 Phase: ZB-MR1
 Signal #1 Info : 30M x 0.32mm x0.2 Signal #2 Info : 30M x 0.32mm x 0.50µm

Compound	RT#1	RT#2	Resp#1	Resp#2	ng/ml	ng/ml

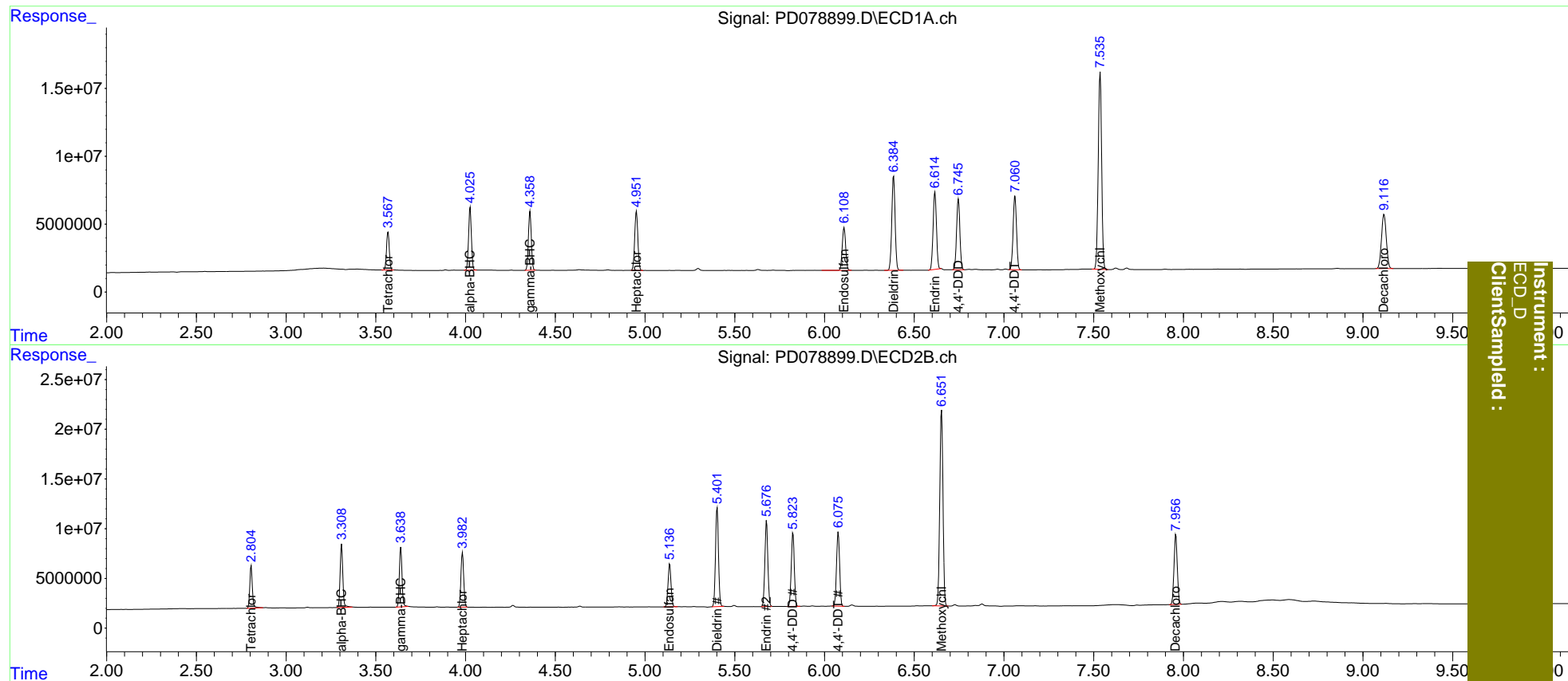
System Monitoring Compounds						
1) SA Tetrachlo...	3.568	2.806	30257928	42693562	77.420	77.137
27) SA Decachlor...	9.118	7.958	74881786	89455098	140.708	139.316
Target Compounds						
2) A alpha-BHC	4.026	3.310	50790577	65229871	82.773	83.905
3) MA gamma-BHC...	4.359	3.640	48372169	61224799	80.724	82.695
4) MA Heptachlor	4.952	3.983	53654329	58970077	80.797	79.540
9) A Endosulfan I	6.110	5.138	42253484	50356348	75.307	79.150
13) MA Dieldrin	6.385	5.402	89489046	114.0E6	159.592	166.924
14) MA Endrin	6.616	5.677	74404621	99441863	159.249	165.342
16) A 4,4'-DDD	6.747	5.825	66515323	86926991	160.258	164.418
17) MA 4,4'-DDT	7.062	6.077	71440805	89094221	160.134	168.697
20) A Methoxychlor	7.536	6.652	192.1E6	244.9E6	761.761	761.534

(f)=RT Delta > 1/2 Window (#)=Amounts differ by > 25% (m)=manual int.

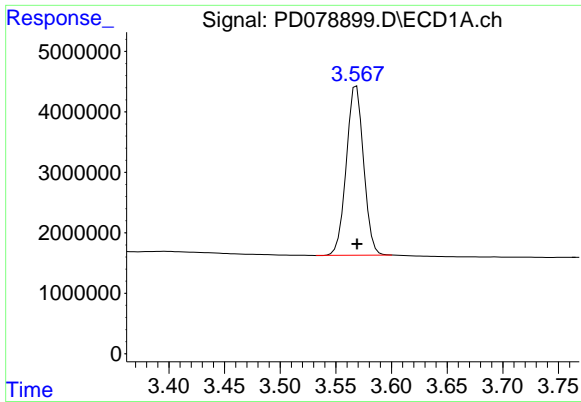
Data Path : Z:\pestpcbsrv\HPCHEM1\ECD_D\Data\PD101623\
 Data File : PD078899.D
 Signal(s) : Signal #1: ECD1A.ch Signal #2: ECD2B.ch
 Acq On : 17 Oct 2023 02:10
 Operator : AR\AJ
 Sample : INDA301
 Misc :
 ALS Vial : 14 Sample Multiplier: 1

Integration File signal 1: autoint1.e
 Integration File signal 2: autoint2.e
 Quant Time: Oct 17 05:15:54 2023
 Quant Method : Z:\pestpcbsrv\HPCHEM1\ECD_D\Method\PD101623CLP-TCLP.M
 Quant Title : GC Extractables
 QLast Update : Tue Oct 17 05:13:23 2023
 Response via : Initial Calibration
 Integrator: ChemStation

Volume Inj. : 1 µl
 Signal #1 Phase : ZB-MR2 Signal #2 Phase: ZB-MR1
 Signal #1 Info : 30M x 0.32mm x0.2 Signal #2 Info : 30M x 0.32mm x 0.50µm



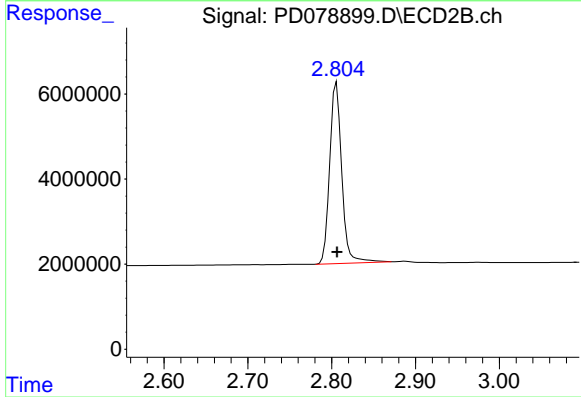
Instrument : ECD_D
 Client Sampled :



#1 Tetrachloro-m-xylene

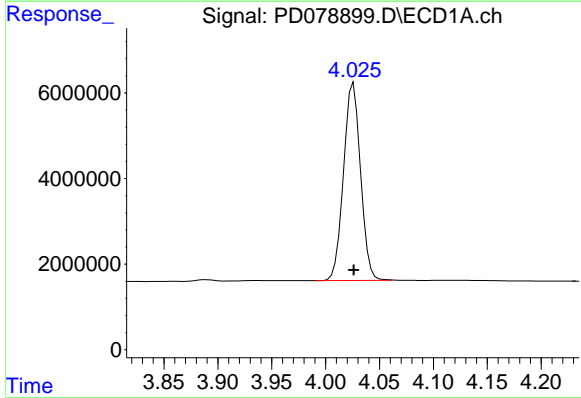
R.T.: 3.568 min
 Delta R.T.: 0.000 min
 Response: 30257928
 Conc: 77.42 ng/ml

Instrument :
 ECD_D
 ClientSampleId :



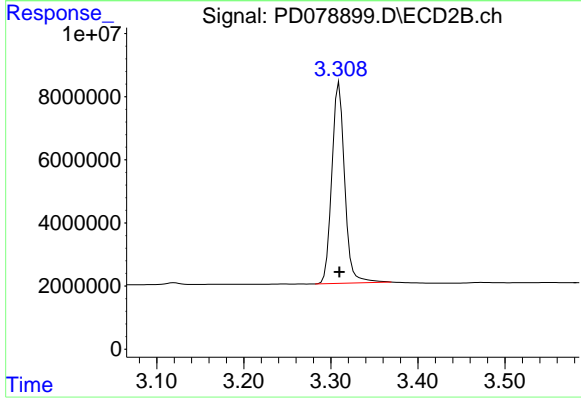
#1 Tetrachloro-m-xylene

R.T.: 2.806 min
 Delta R.T.: 0.000 min
 Response: 42693562
 Conc: 77.14 ng/ml



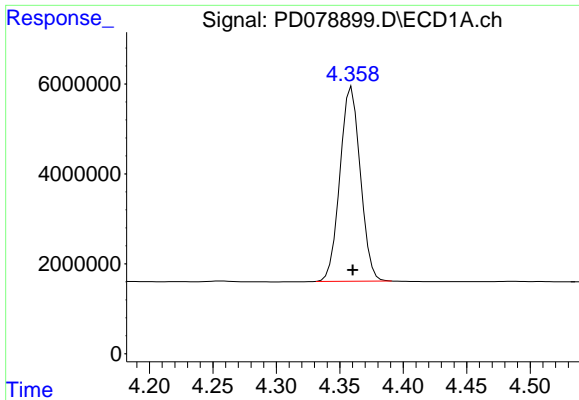
#2 alpha-BHC

R.T.: 4.026 min
 Delta R.T.: 0.000 min
 Response: 50790577
 Conc: 82.77 ng/ml



#2 alpha-BHC

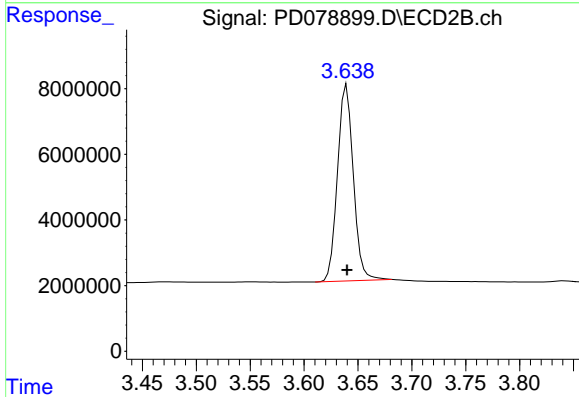
R.T.: 3.310 min
 Delta R.T.: 0.000 min
 Response: 65229871
 Conc: 83.91 ng/ml



#3 gamma-BHC (Lindane)

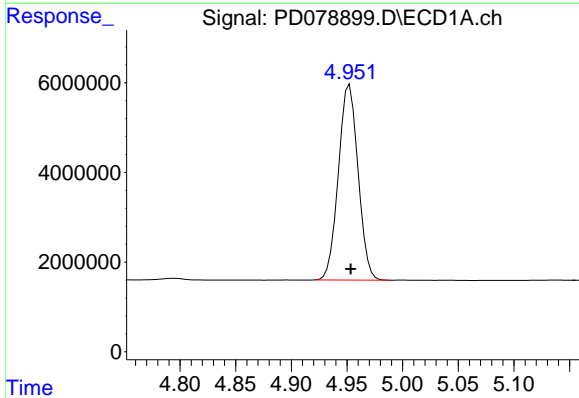
R.T.: 4.359 min
 Delta R.T.: 0.000 min
 Response: 48372169
 Conc: 80.72 ng/ml

Instrument :
 ECD_D
 ClientSampleId :



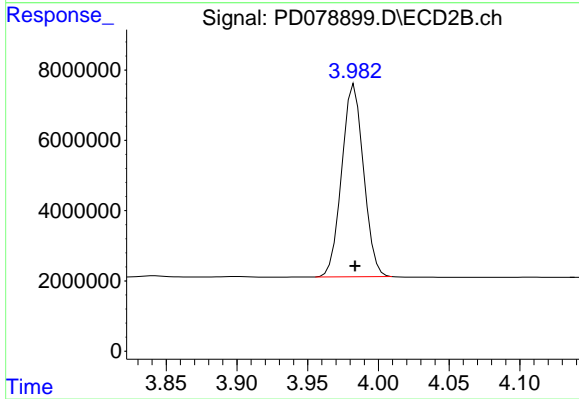
#3 gamma-BHC (Lindane)

R.T.: 3.640 min
 Delta R.T.: 0.000 min
 Response: 61224799
 Conc: 82.69 ng/ml



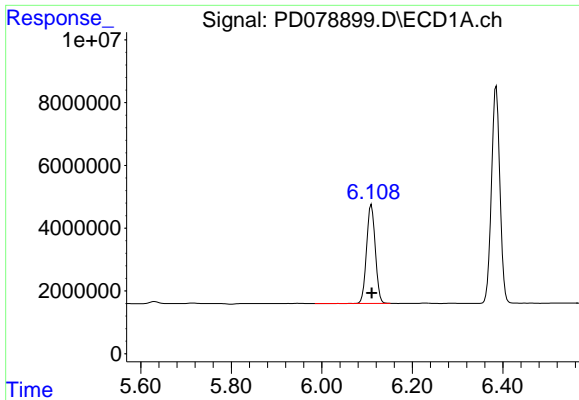
#4 Heptachlor

R.T.: 4.952 min
 Delta R.T.: 0.000 min
 Response: 53654329
 Conc: 80.80 ng/ml



#4 Heptachlor

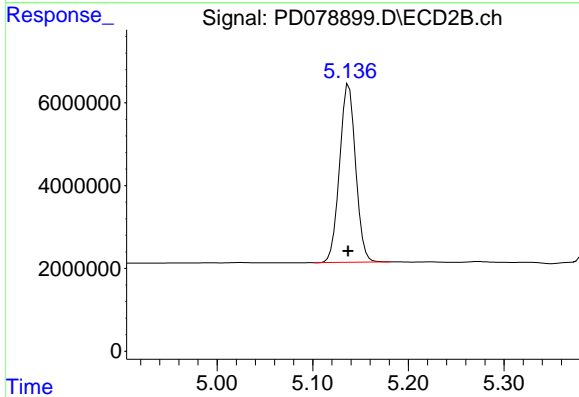
R.T.: 3.983 min
 Delta R.T.: 0.000 min
 Response: 58970077
 Conc: 79.54 ng/ml



#9 Endosulfan I

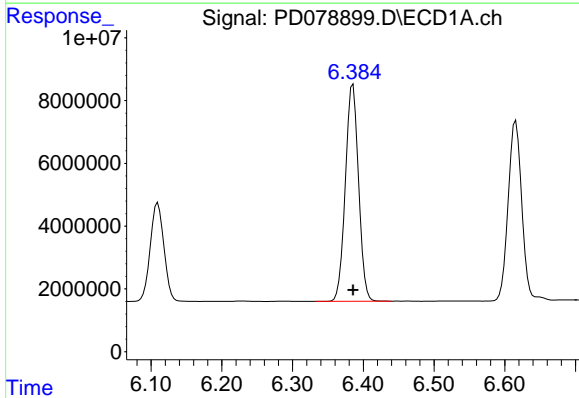
R.T.: 6.110 min
 Delta R.T.: 0.000 min
 Response: 42253484
 Conc: 75.31 ng/ml

Instrument :
 ECD_D
 ClientSampleId :



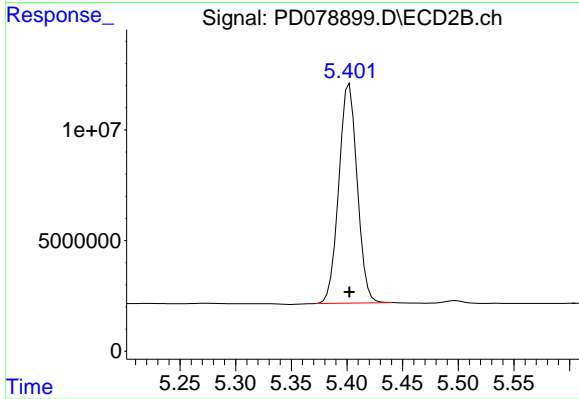
#9 Endosulfan I

R.T.: 5.138 min
 Delta R.T.: 0.000 min
 Response: 50356348
 Conc: 79.15 ng/ml



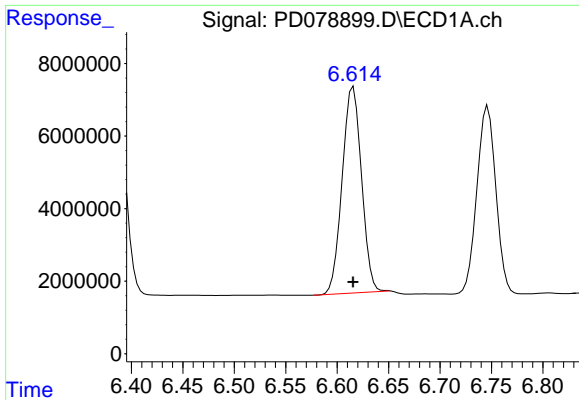
#13 Dieldrin

R.T.: 6.385 min
 Delta R.T.: 0.000 min
 Response: 89489046
 Conc: 159.59 ng/ml



#13 Dieldrin

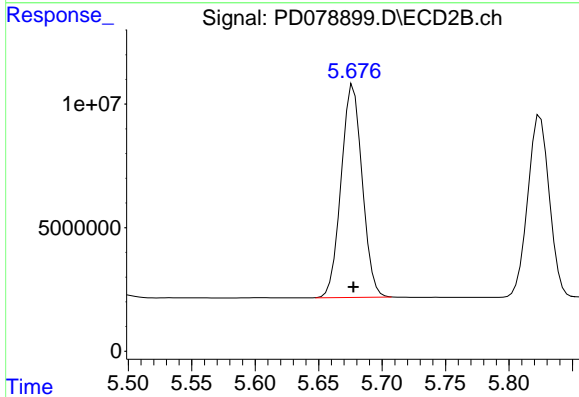
R.T.: 5.402 min
 Delta R.T.: 0.000 min
 Response: 113973620
 Conc: 166.92 ng/ml



#14 Endrin

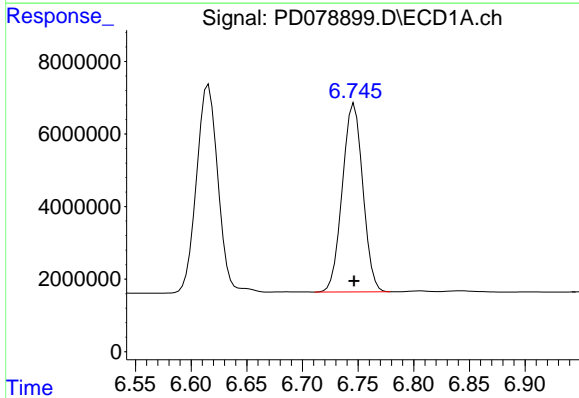
R.T.: 6.616 min
 Delta R.T.: 0.000 min
 Response: 74404621
 Conc: 159.25 ng/ml

Instrument :
 ECD_D
 ClientSampleId :



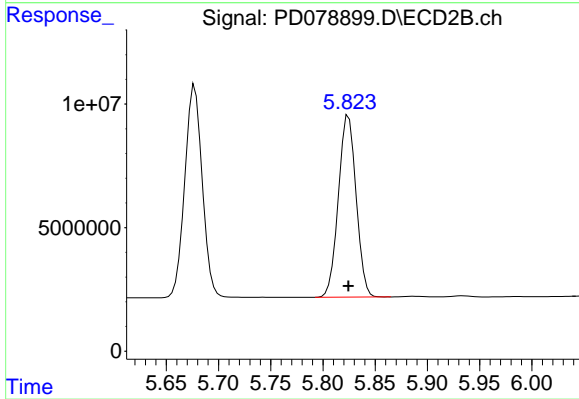
#14 Endrin

R.T.: 5.677 min
 Delta R.T.: 0.000 min
 Response: 99441863
 Conc: 165.34 ng/ml



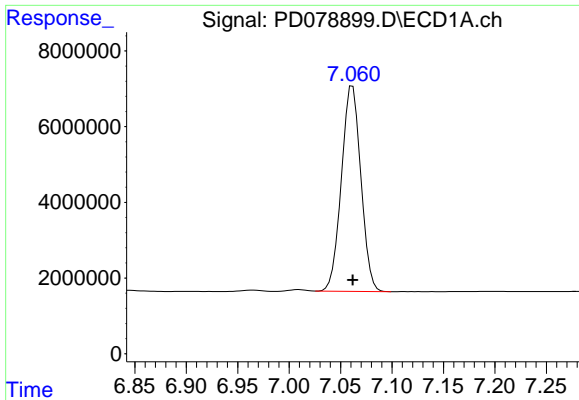
#16 4,4'-DDD

R.T.: 6.747 min
 Delta R.T.: 0.000 min
 Response: 66515323
 Conc: 160.26 ng/ml



#16 4,4'-DDD

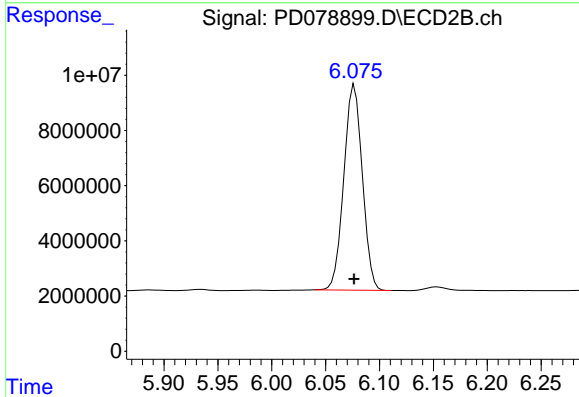
R.T.: 5.825 min
 Delta R.T.: 0.000 min
 Response: 86926991
 Conc: 164.42 ng/ml



#17 4,4'-DDT

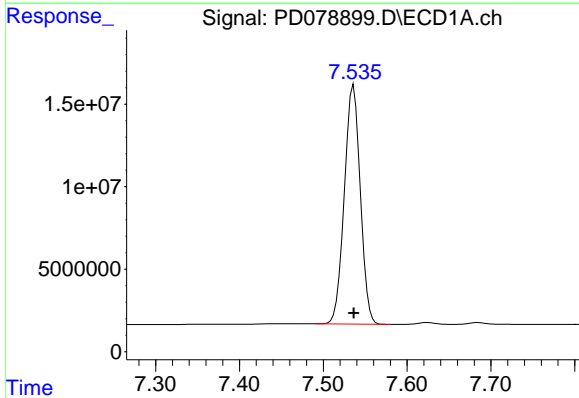
R.T.: 7.062 min
 Delta R.T.: 0.000 min
 Response: 71440805
 Conc: 160.13 ng/ml

Instrument :
 ECD_D
 ClientSampleId :



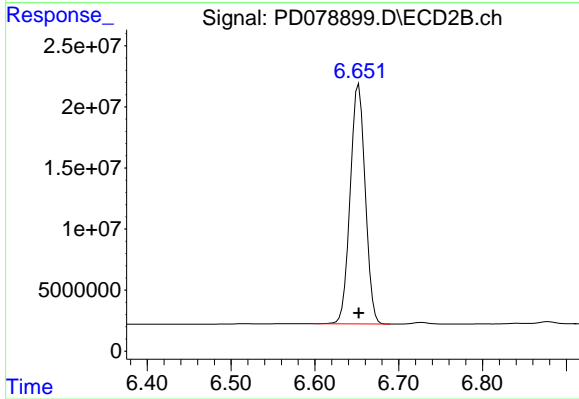
#17 4,4'-DDT

R.T.: 6.077 min
 Delta R.T.: 0.000 min
 Response: 89094221
 Conc: 168.70 ng/ml



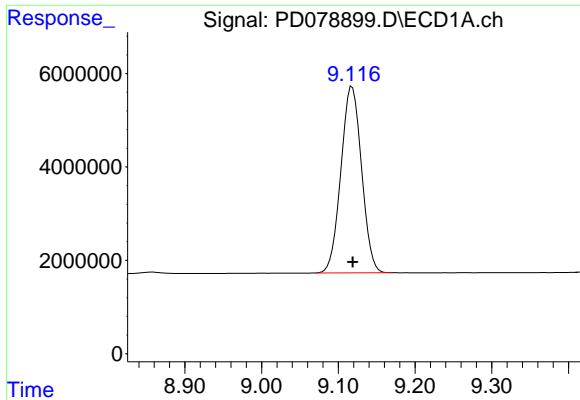
#20 Methoxychlor

R.T.: 7.536 min
 Delta R.T.: 0.000 min
 Response: 192138054
 Conc: 761.76 ng/ml



#20 Methoxychlor

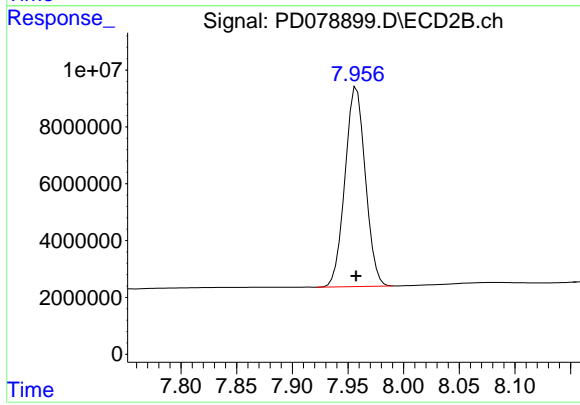
R.T.: 6.652 min
 Delta R.T.: 0.000 min
 Response: 244944399
 Conc: 761.53 ng/ml



#27 Decachlorobiphenyl

R.T.: 9.118 min
Delta R.T.: 0.000 min
Response: 74881786
Conc: 140.71 ng/ml

Instrument :
ECD_D
ClientSampleId :



#27 Decachlorobiphenyl

R.T.: 7.958 min
Delta R.T.: 0.000 min
Response: 89455098
Conc: 139.32 ng/ml