

Data Path : Z:\pestpcbsrv\HPCHEM1\ECD_D\Data\PD101722\
 Data File : PD072450.D
 Signal(s) : Signal #1: ECD1A.ch Signal #2: ECD2B.ch
 Acq On : 17 Oct 2022 16:25
 Operator : AR\AJ
 Sample : INDB101
 Misc :
 ALS Vial : 10 Sample Multiplier: 1

Instrument :
 ECD_D
ClientSampleId :
 INDB1043

Manual Integrations
APPROVED

Reviewed By :Abdul Mirza 10/20/2022
 Supervised By :Ankita Jodhani 10/20/2022

Integration File signal 1: autoint1.e
 Integration File signal 2: autoint2.e
 Quant Time: Oct 18 05:48:21 2022
 Quant Method : Z:\pestpcbsrv\HPCHEM1\ECD_D\Method\PD101722CLP.M
 Quant Title : GC Extractables
 QLast Update : Tue Oct 18 05:48:12 2022
 Response via : Initial Calibration
 Integrator: ChemStation

Volume Inj. : 1 µl
 Signal #1 Phase : ZB-MR2 Signal #2 Phase: ZB-MR1
 Signal #1 Info : 30M x 0.32mm x0.2 Signal #2 Info : 30M x 0.32mm x 0.50µm

Compound	RT#1	RT#2	Resp#1	Resp#2	ng/ml	ng/ml

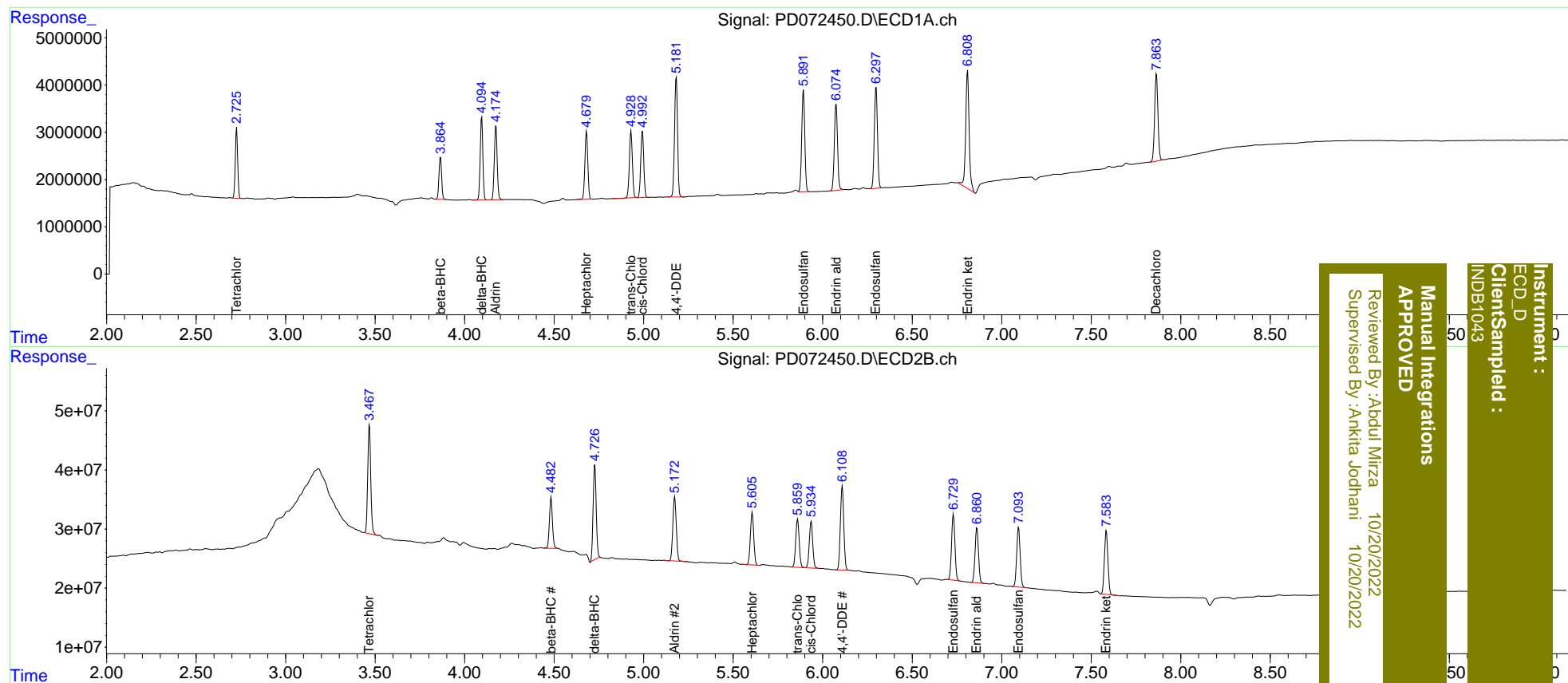
System Monitoring Compounds						
1) SA Tetrachlo...	2.725	3.468	13979486	215.2E6	5.614m	5.423
27) SA Decachlor...	7.863	8.930	23705383	107.0E6	10.777m	10.673
Target Compounds						
5) MB Aldrin	4.175	5.174	17644442	145.2E6	5.126	5.490
6) B beta-BHC	3.864	4.483	9227682	101.3E6	5.470m	5.508
7) B delta-BHC	4.096	4.727	18128601	191.2E6	5.078	5.369
8) B Heptachlo...	4.681	5.606	16346710	116.4E6	5.214	5.433
10) B trans-Chl...	4.930	5.860	16388197	109.7E6	5.146	5.420
11) B cis-Chlor...	4.992	5.936	16244901	105.4E6	5.178m	5.434
12) B 4,4'-DDE	5.182	6.109	29627537	188.1E6	10.092	10.746
15) B Endosulfa...	5.893	6.730	25765251	145.8E6	10.379	10.670
18) B Endrin al...	6.074	6.861	22727174	124.3E6	10.739m	10.732
19) B Endosulfa...	6.297	7.094	26243939	135.5E6	10.483m	10.650
21) B Endrin ke...	6.809	7.584	33528600	146.8E6	10.982	10.689

(f)=RT Delta > 1/2 Window (#)=Amounts differ by > 25% (m)=manual int.

Data Path : Z:\pestpcbsrv\HPCHEM1\ECD_D\Data\PD101722\
 Data File : PD072450.D
 Signal(s) : Signal #1: ECD1A.ch Signal #2: ECD2B.ch
 Acq On : 17 Oct 2022 16:25
 Operator : AR\AJ
 Sample : INDB101
 Misc :
 ALS Vial : 10 Sample Multiplier: 1

Integration File signal 1: autoint1.e
 Integration File signal 2: autoint2.e
 Quant Time: Oct 18 05:48:21 2022
 Quant Method : Z:\pestpcbsrv\HPCHEM1\ECD_D\Method\PD101722CLP.M
 Quant Title : GC Extractables
 QLast Update : Tue Oct 18 05:48:12 2022
 Response via : Initial Calibration
 Integrator: ChemStation

Volume Inj. : 1 µl
 Signal #1 Phase : ZB-MR2 Signal #2 Phase: ZB-MR1
 Signal #1 Info : 30M x 0.32mm x0.2 Signal #2 Info : 30M x 0.32mm x 0.50µm



Instrument : ECD_D
 Client Sampled : INDB1043
 Manual Integrations APPROVED
 Reviewed By : Abdul Mirza 10/20/2022
 Supervised By : Ankita Jodhani 10/20/2022