

Data Path : Z:\pestpcbsrv\HPCHEM1\ECD\_D\Data\PD101723\  
 Data File : PD078912.D  
 Signal(s) : Signal #1: ECD1A.ch Signal #2: ECD2B.ch  
 Acq On : 17 Oct 2023 05:16  
 Operator : AR\AJ  
 Sample : TOXAPH101  
 Misc :  
 ALS Vial : 4 Sample Multiplier: 1

Instrument :  
 ECD\_D  
 ClientSampleId :

Integration File signal 1: autoint1.e  
 Integration File signal 2: autoint2.e  
 Quant Time: Oct 17 06:24:26 2023  
 Quant Method : Z:\pestpcbsrv\HPCHEM1\ECD\_D\Method\PD101723CLP.M  
 Quant Title : GC Extractables  
 QLast Update : Tue Oct 17 06:23:05 2023  
 Response via : Initial Calibration  
 Integrator: ChemStation

Volume Inj. : 1 µl  
 Signal #1 Phase : ZB-MR1 Signal #2 Phase: ZB-MR2  
 Signal #1 Info : 30M x 0.32mm x0.5 Signal #2 Info : 30M x 0.32mm x 0.25µm

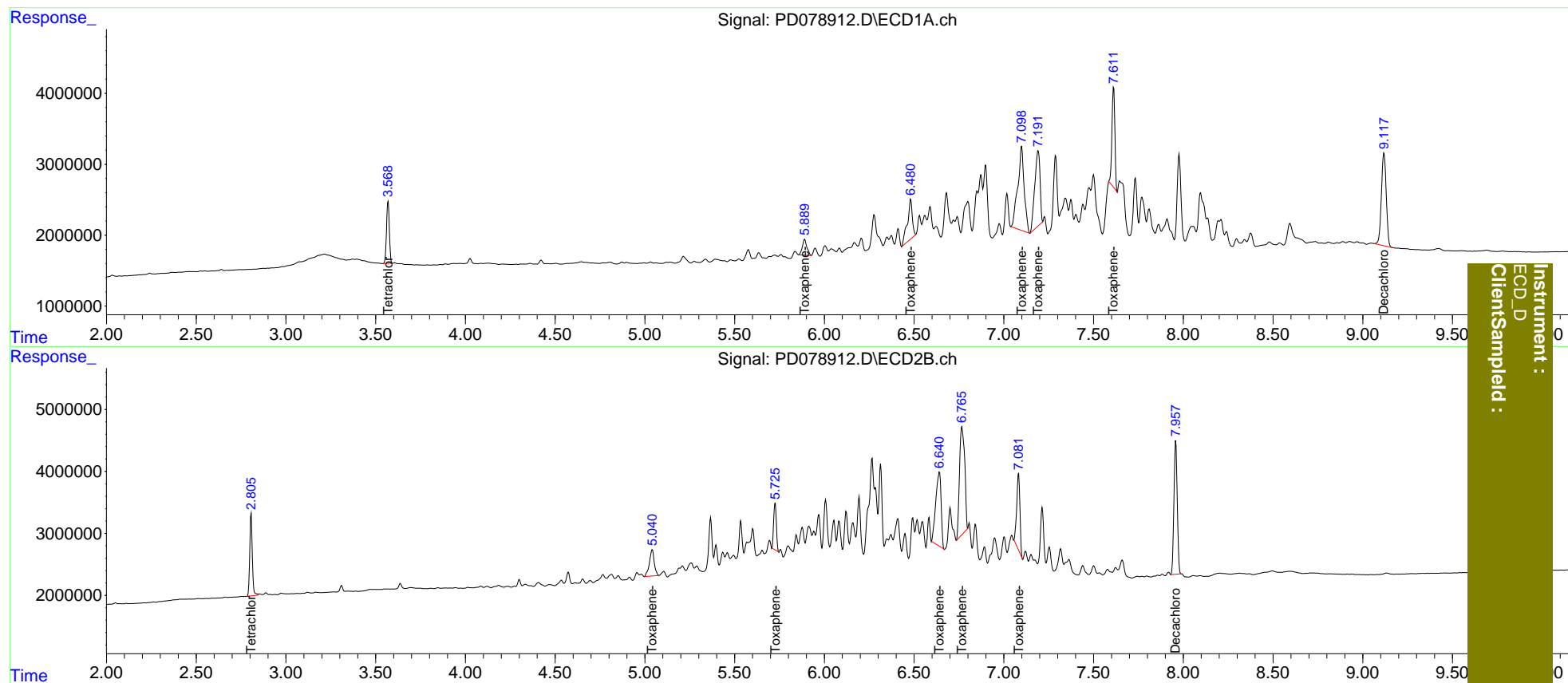
Compound	RT#1	RT#2	Resp#1	Resp#2	ng/ml	ng/ml
-----						
System Monitoring Compounds						
1) SA Tetrachlo...	3.570	2.806	9540898	13295481	5.210	5.161
27) SA Decachlor...	9.119	7.958	24526831	27655925	10.917	10.676
Target Compounds						
22) Toxaphene-1	5.891	5.042	3945006	7990184	561.199	514.916
23) Toxaphene-2	6.481	5.726	10638724	8013095	551.157	487.643
24) Toxaphene-3	7.099	6.642	29338679	24705176	517.620	469.326
25) Toxaphene-4	7.192	6.767	21651339	34683147	510.876	477.607
26) Toxaphene-5	7.612	7.083	16094989	15043619	499.927	488.467
-----						

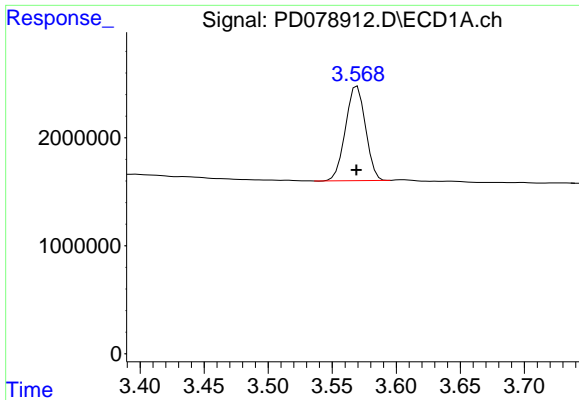
(f)=RT Delta > 1/2 Window (#)=Amounts differ by > 25% (m)=manual int.

Data Path : Z:\pestpcbsrv\HPCHEM1\ECD\_D\Data\PD101723\  
 Data File : PD078912.D  
 Signal(s) : Signal #1: ECD1A.ch Signal #2: ECD2B.ch  
 Acq On : 17 Oct 2023 05:16  
 Operator : AR\AJ  
 Sample : TOXAPH101  
 Misc :  
 ALS Vial : 4 Sample Multiplier: 1

Integration File signal 1: autoint1.e  
 Integration File signal 2: autoint2.e  
 Quant Time: Oct 17 06:24:26 2023  
 Quant Method : Z:\pestpcbsrv\HPCHEM1\ECD\_D\Method\PD101723CLP.M  
 Quant Title : GC Extractables  
 QLast Update : Tue Oct 17 06:23:05 2023  
 Response via : Initial Calibration  
 Integrator: ChemStation

Volume Inj. : 1 µl  
 Signal #1 Phase : ZB-MR1 Signal #2 Phase: ZB-MR2  
 Signal #1 Info : 30M x 0.32mm x0.5 Signal #2 Info : 30M x 0.32mm x 0.25µm

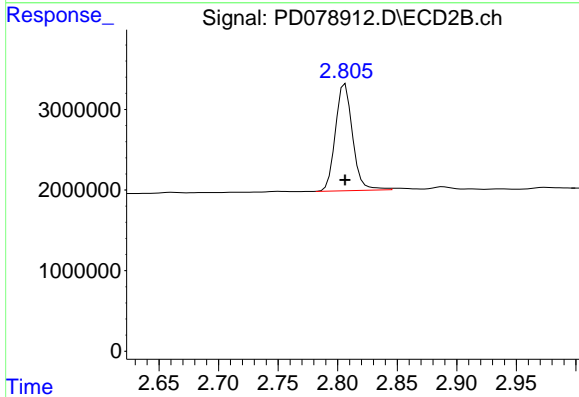




#1 Tetrachloro-m-xylene

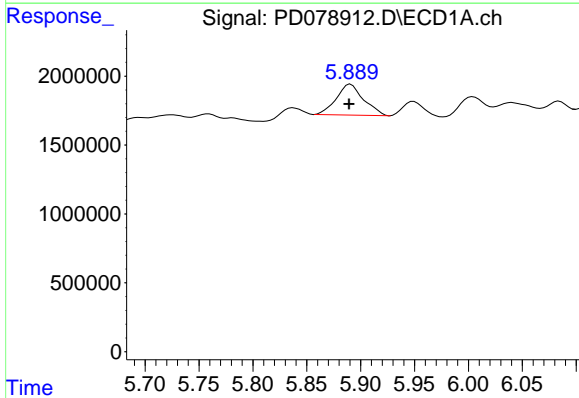
R.T.: 3.570 min  
 Delta R.T.: 0.000 min  
 Response: 9540898  
 Conc: 5.21 ng/ml

Instrument :  
 ECD\_D  
 ClientSampleId :



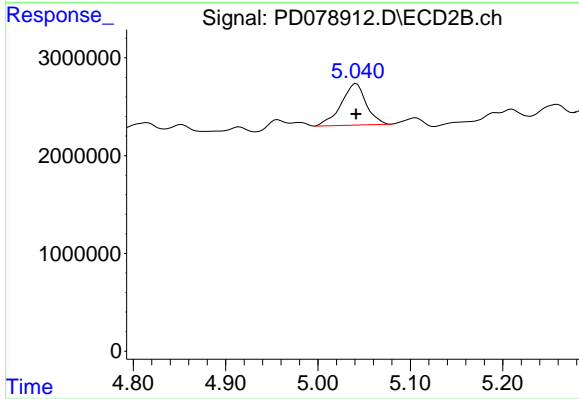
#1 Tetrachloro-m-xylene

R.T.: 2.806 min  
 Delta R.T.: 0.000 min  
 Response: 13295481  
 Conc: 5.16 ng/ml



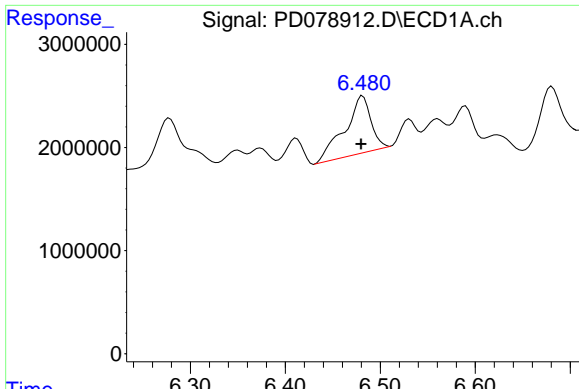
#22 Toxaphene-1

R.T.: 5.891 min  
 Delta R.T.: 0.001 min  
 Response: 3945006  
 Conc: 561.20 ng/ml



#22 Toxaphene-1

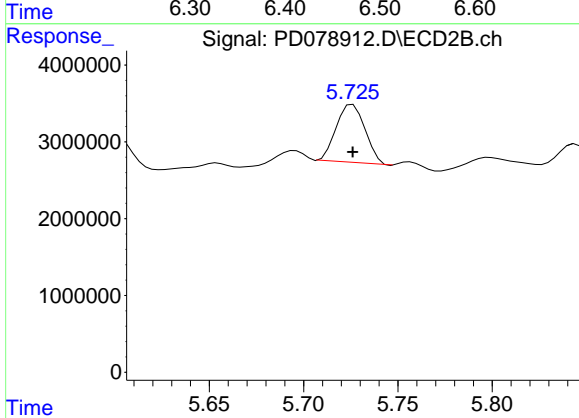
R.T.: 5.042 min  
 Delta R.T.: 0.000 min  
 Response: 7990184  
 Conc: 514.92 ng/ml



#23 Toxaphene-2

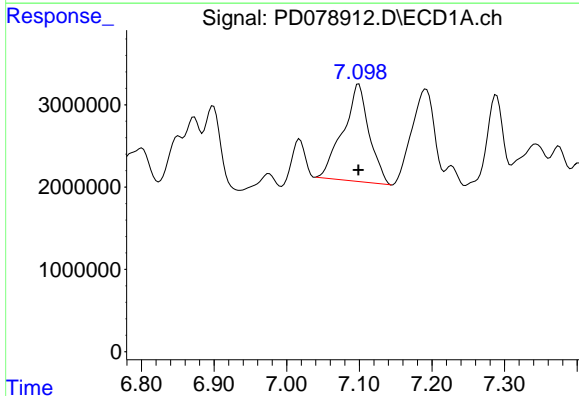
R.T.: 6.481 min  
 Delta R.T.: 0.002 min  
 Response: 10638724  
 Conc: 551.16 ng/ml

Instrument :  
 ECD\_D  
 ClientSampleId :



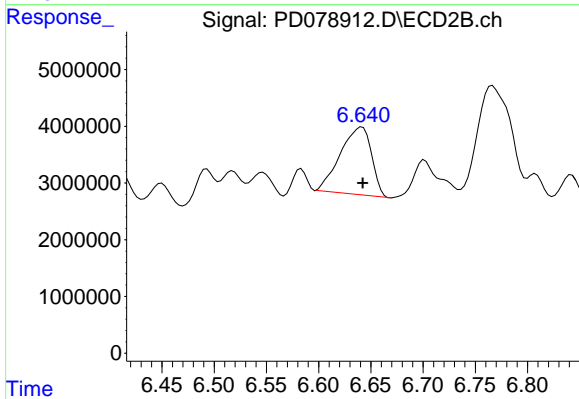
#23 Toxaphene-2

R.T.: 5.726 min  
 Delta R.T.: 0.000 min  
 Response: 8013095  
 Conc: 487.64 ng/ml



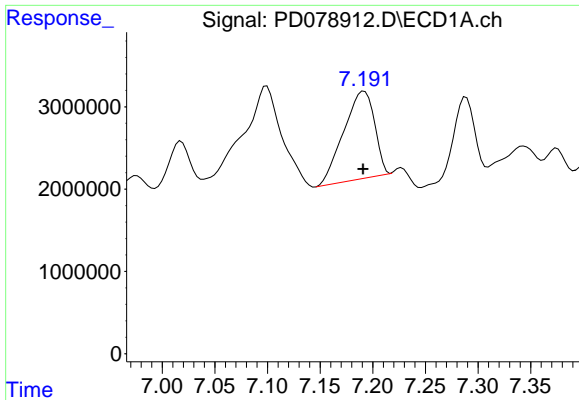
#24 Toxaphene-3

R.T.: 7.099 min  
 Delta R.T.: 0.000 min  
 Response: 29338679  
 Conc: 517.62 ng/ml



#24 Toxaphene-3

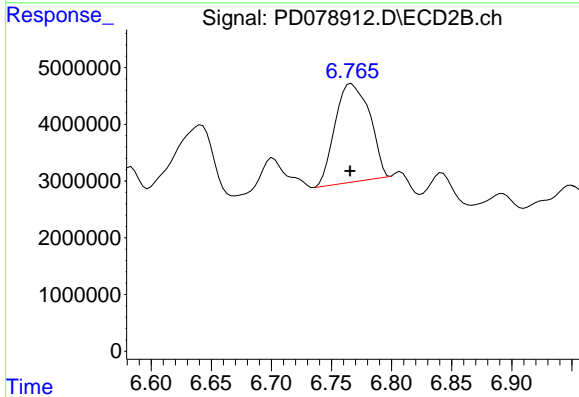
R.T.: 6.642 min  
 Delta R.T.: 0.000 min  
 Response: 24705176  
 Conc: 469.33 ng/ml



#25 Toxaphene-4

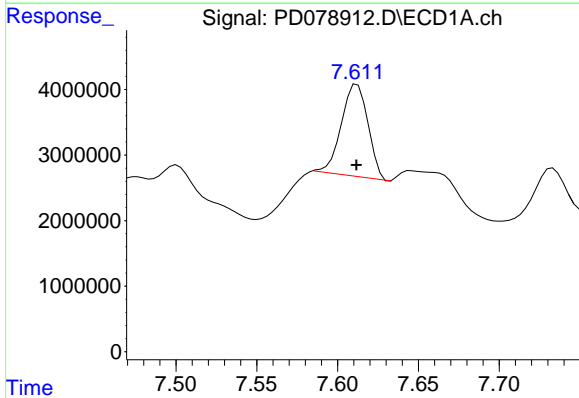
R.T.: 7.192 min  
 Delta R.T.: 0.001 min  
 Response: 21651339  
 Conc: 510.88 ng/ml

Instrument :  
 ECD\_D  
 ClientSampleId :



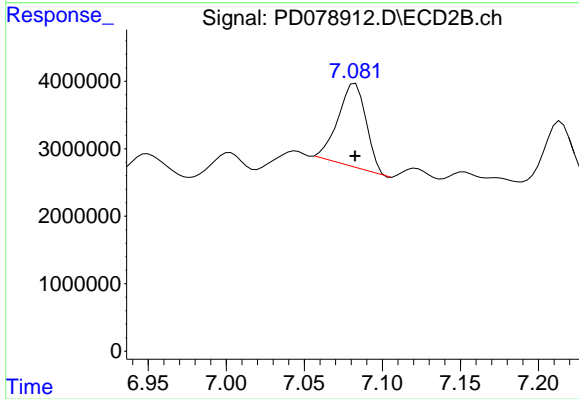
#25 Toxaphene-4

R.T.: 6.767 min  
 Delta R.T.: 0.001 min  
 Response: 34683147  
 Conc: 477.61 ng/ml



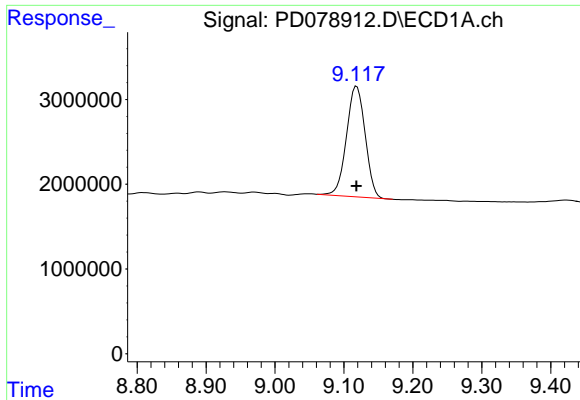
#26 Toxaphene-5

R.T.: 7.612 min  
 Delta R.T.: 0.000 min  
 Response: 16094989  
 Conc: 499.93 ng/ml



#26 Toxaphene-5

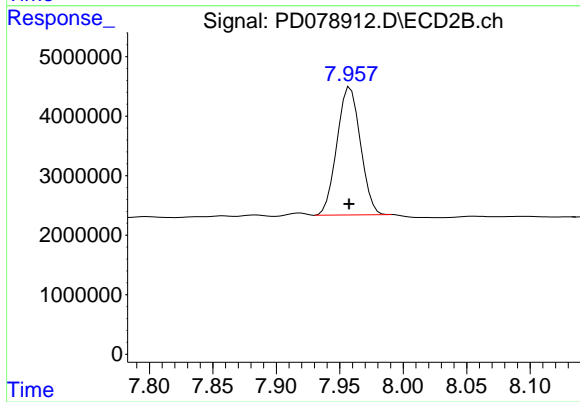
R.T.: 7.083 min  
 Delta R.T.: 0.000 min  
 Response: 15043619  
 Conc: 488.47 ng/ml



#27 Decachlorobiphenyl

R.T.: 9.119 min  
Delta R.T.: 0.000 min  
Response: 24526831  
Conc: 10.92 ng/ml

Instrument :  
ECD\_D  
ClientSampleId :



#27 Decachlorobiphenyl

R.T.: 7.958 min  
Delta R.T.: 0.001 min  
Response: 27655925  
Conc: 10.68 ng/ml