

Data Path : Z:\pestpcbsrv\HPCHEM1\ECD\_D\Data\PD101723\  
 Data File : PD078925.D  
 Signal(s) : Signal #1: ECD1A.ch Signal #2: ECD2B.ch  
 Acq On : 17 Oct 2023 08:09  
 Operator : AR\AJ  
 Sample : INDA501  
 Misc :  
 ALS Vial : 18 Sample Multiplier: 1

Instrument :  
 ECD\_D  
 ClientSampleId :

Integration File signal 1: autoint1.e  
 Integration File signal 2: autoint2.e  
 Quant Time: Oct 17 08:28:22 2023  
 Quant Method : Z:\pestpcbsrv\HPCHEM1\ECD\_D\Method\PD101723CLP.M  
 Quant Title : GC Extractables  
 QLast Update : Tue Oct 17 07:37:33 2023  
 Response via : Initial Calibration  
 Integrator: ChemStation

Volume Inj. : 1 µl  
 Signal #1 Phase : ZB-MR1 Signal #2 Phase: ZB-MR2  
 Signal #1 Info : 30M x 0.32mm x0.5 Signal #2 Info : 30M x 0.32mm x 0.25µm

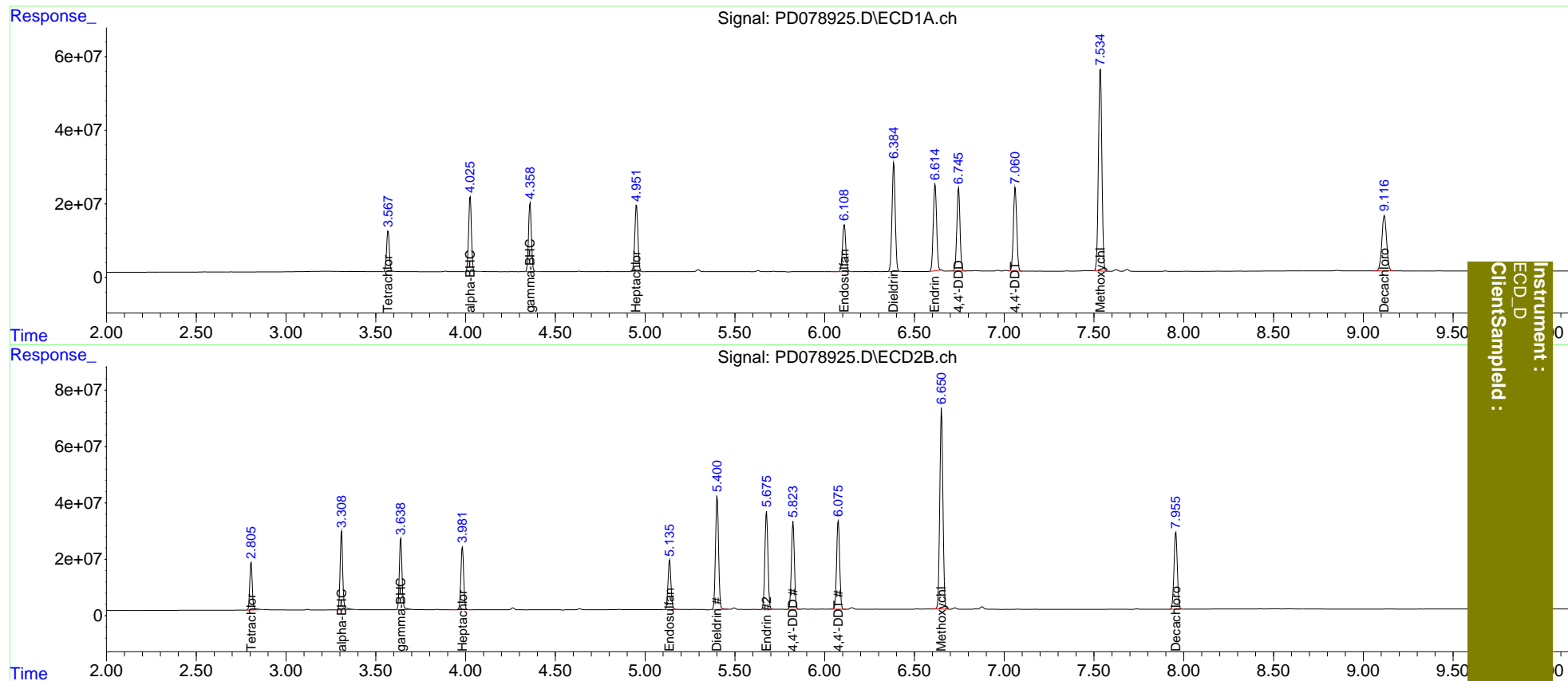
	Compound	RT#1	RT#2	Resp#1	Resp#2	ng/ml	ng/ml
-----							
System Monitoring Compounds							
1)	SA Tetrachlo...	3.569	2.806	118.7E6	168.3E6	79.215	79.077
27)	SA Decachlor...	9.118	7.956	275.5E6	349.1E6	148.079	154.660
Target Compounds							
2)	A alpha-BHC	4.026	3.309	223.4E6	285.9E6	88.497	85.725
3)	MA gamma-BHC...	4.360	3.639	207.1E6	265.3E6	86.035	83.990
4)	MA Heptachlor	4.952	3.983	217.5E6	244.3E6	85.794	82.030
9)	A Endosulfan I	6.109	5.137	163.0E6	201.6E6	78.057	81.292
13)	MA Dieldrin	6.385	5.401	370.6E6	478.9E6	168.440	165.300
14)	MA Endrin	6.615	5.676	304.4E6	408.0E6	165.344	163.803
16)	A 4,4'-DDD	6.746	5.824	274.2E6	359.5E6	168.448	165.430
17)	MA 4,4'-DDT	7.061	6.076	291.0E6	371.2E6	167.844	167.682
20)	A Methoxychlor	7.536	6.651	736.9E6	870.3E6	794.902	714.146

(f)=RT Delta > 1/2 Window (#)=Amounts differ by > 25% (m)=manual int.

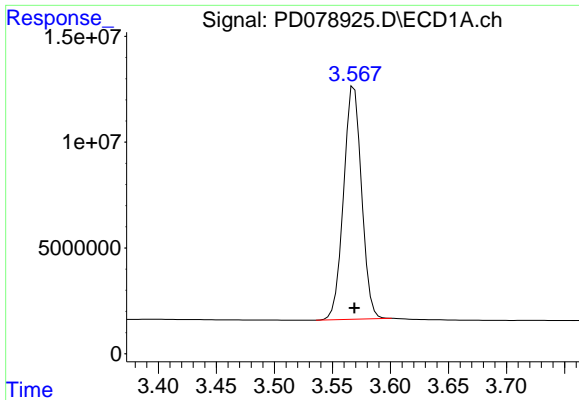
Data Path : Z:\pestpcbsrv\HPCHEM1\ECD\_D\Data\PD101723\  
 Data File : PD078925.D  
 Signal(s) : Signal #1: ECD1A.ch Signal #2: ECD2B.ch  
 Acq On : 17 Oct 2023 08:09  
 Operator : AR\AJ  
 Sample : INDA501  
 Misc :  
 ALS Vial : 18 Sample Multiplier: 1

Integration File signal 1: autoint1.e  
 Integration File signal 2: autoint2.e  
 Quant Time: Oct 17 08:28:22 2023  
 Quant Method : Z:\pestpcbsrv\HPCHEM1\ECD\_D\Method\PD101723CLP.M  
 Quant Title : GC Extractables  
 QLast Update : Tue Oct 17 07:37:33 2023  
 Response via : Initial Calibration  
 Integrator: ChemStation

Volume Inj. : 1 µl  
 Signal #1 Phase : ZB-MR1 Signal #2 Phase: ZB-MR2  
 Signal #1 Info : 30M x 0.32mm x0.5 Signal #2 Info : 30M x 0.32mm x 0.25µm

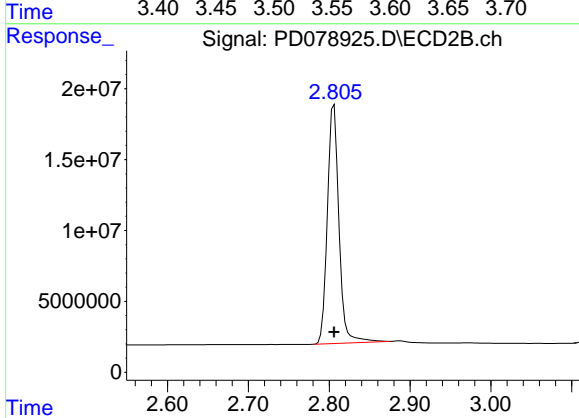


Instrument :  
 ECD\_D  
 ClientSampled :

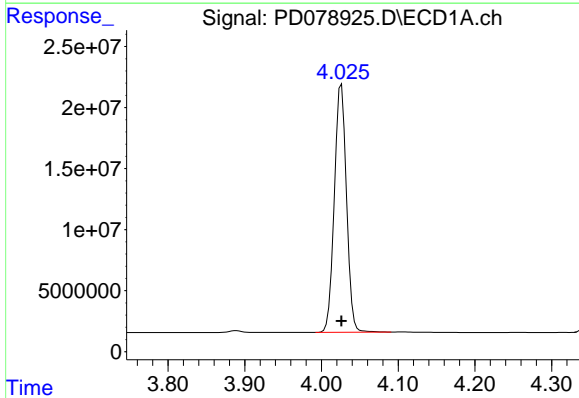


#1 Tetrachloro-m-xylene  
R.T.: 3.569 min  
Delta R.T.: 0.000 min  
Response: 118740948  
Conc: 79.21 ng/ml

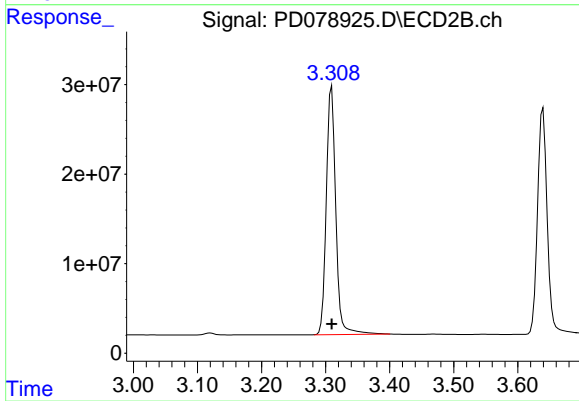
Instrument :  
ECD\_D  
ClientSampleId :



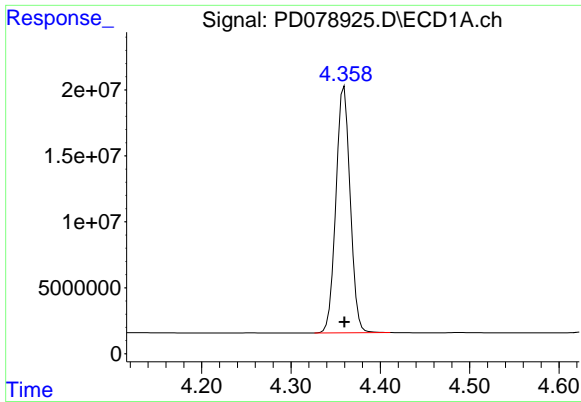
#1 Tetrachloro-m-xylene  
R.T.: 2.806 min  
Delta R.T.: 0.000 min  
Response: 168282764  
Conc: 79.08 ng/ml



#2 alpha-BHC  
R.T.: 4.026 min  
Delta R.T.: 0.000 min  
Response: 223433946  
Conc: 88.50 ng/ml



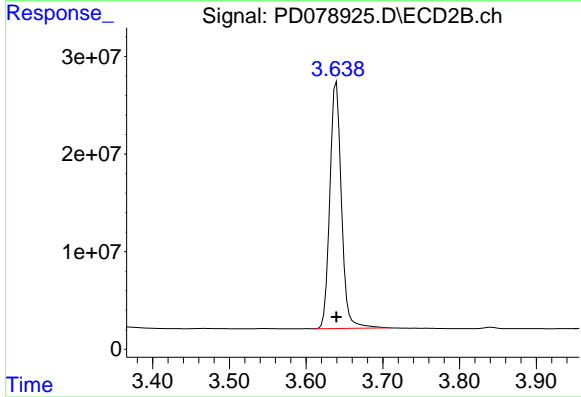
#2 alpha-BHC  
R.T.: 3.309 min  
Delta R.T.: 0.000 min  
Response: 285947224  
Conc: 85.73 ng/ml



#3 gamma-BHC (Lindane)

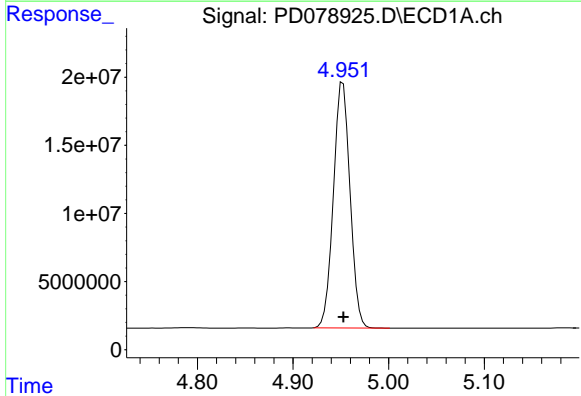
R.T.: 4.360 min  
 Delta R.T.: 0.000 min  
 Response: 207113846  
 Conc: 86.03 ng/ml

Instrument :  
 ECD\_D  
 ClientSampleId :



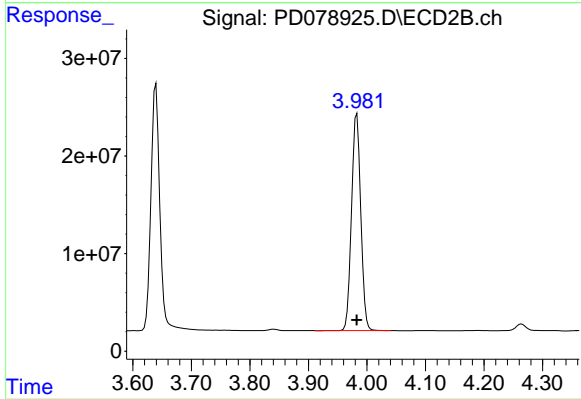
#3 gamma-BHC (Lindane)

R.T.: 3.639 min  
 Delta R.T.: 0.000 min  
 Response: 265301217  
 Conc: 83.99 ng/ml



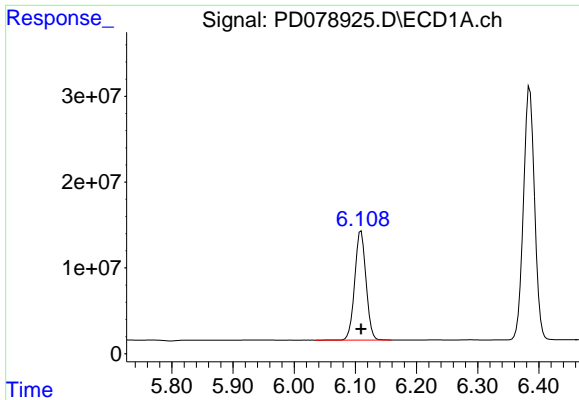
#4 Heptachlor

R.T.: 4.952 min  
 Delta R.T.: 0.000 min  
 Response: 217477562  
 Conc: 85.79 ng/ml



#4 Heptachlor

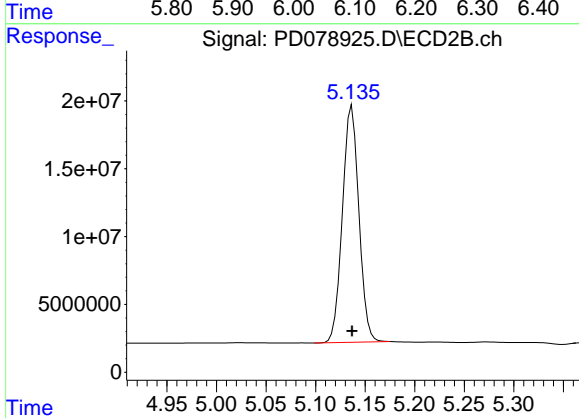
R.T.: 3.983 min  
 Delta R.T.: 0.000 min  
 Response: 244338013  
 Conc: 82.03 ng/ml



#9 Endosulfan I

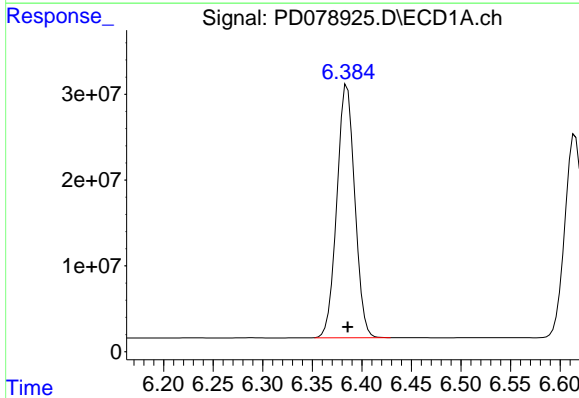
R.T.: 6.109 min  
 Delta R.T.: 0.000 min  
 Response: 162987931  
 Conc: 78.06 ng/ml

Instrument :  
 ECD\_D  
 ClientSampleId :



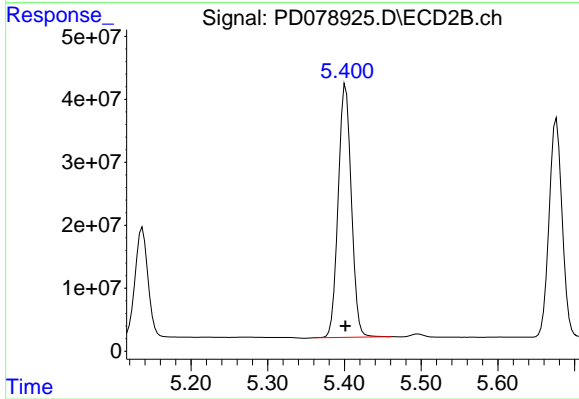
#9 Endosulfan I

R.T.: 5.137 min  
 Delta R.T.: 0.000 min  
 Response: 201564078  
 Conc: 81.29 ng/ml



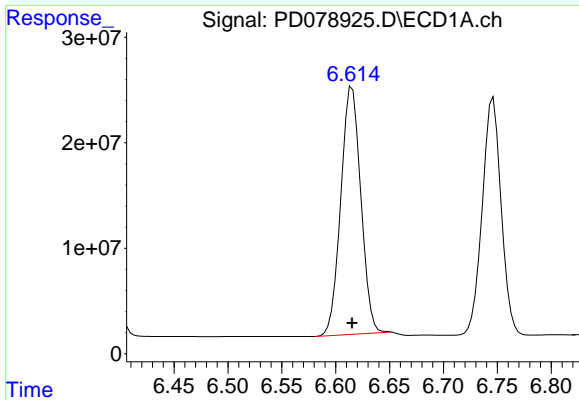
#13 Dieldrin

R.T.: 6.385 min  
 Delta R.T.: 0.000 min  
 Response: 370575419  
 Conc: 168.44 ng/ml



#13 Dieldrin

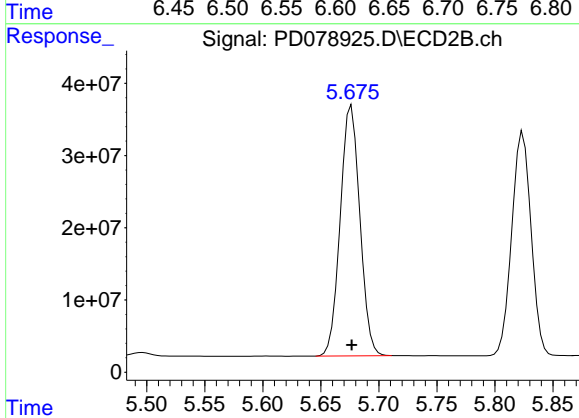
R.T.: 5.401 min  
 Delta R.T.: 0.000 min  
 Response: 478913025  
 Conc: 165.30 ng/ml



#14 Endrin

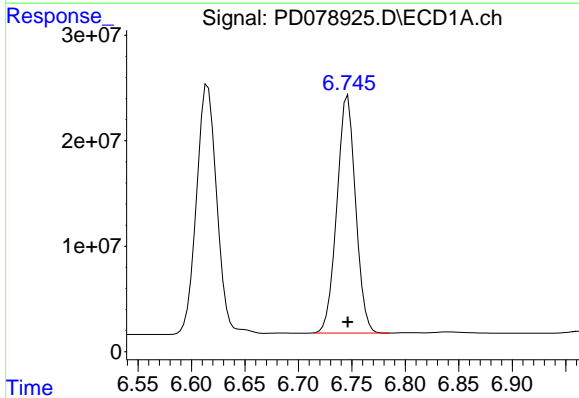
R.T.: 6.615 min  
 Delta R.T.: 0.000 min  
 Response: 304388568  
 Conc: 165.34 ng/ml

Instrument :  
 ECD\_D  
 ClientSampleId :



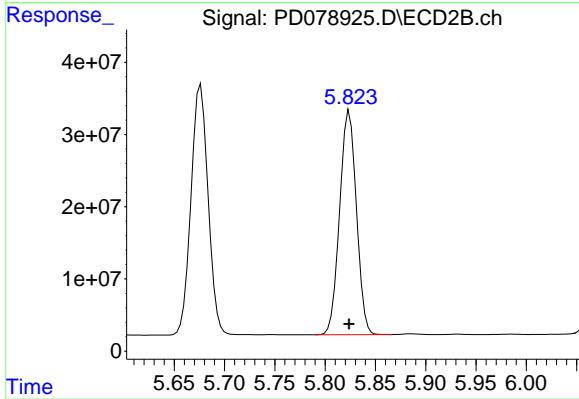
#14 Endrin

R.T.: 5.676 min  
 Delta R.T.: 0.000 min  
 Response: 408025006  
 Conc: 163.80 ng/ml



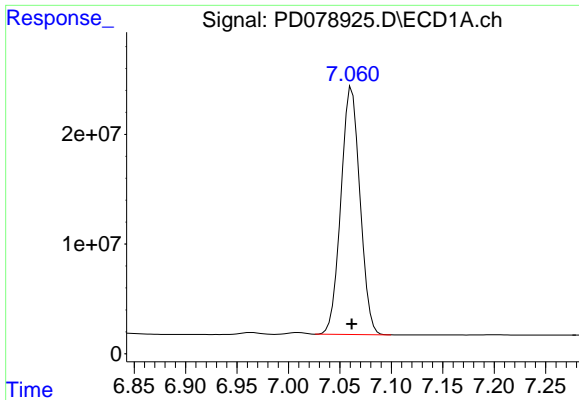
#16 4,4'-DDD

R.T.: 6.746 min  
 Delta R.T.: 0.000 min  
 Response: 274175390  
 Conc: 168.45 ng/ml



#16 4,4'-DDD

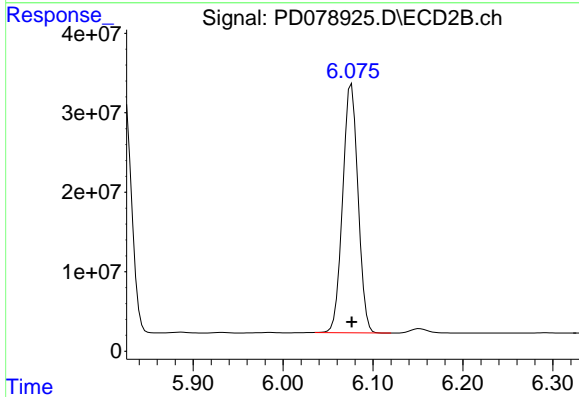
R.T.: 5.824 min  
 Delta R.T.: 0.000 min  
 Response: 359534555  
 Conc: 165.43 ng/ml



#17 4,4'-DDT

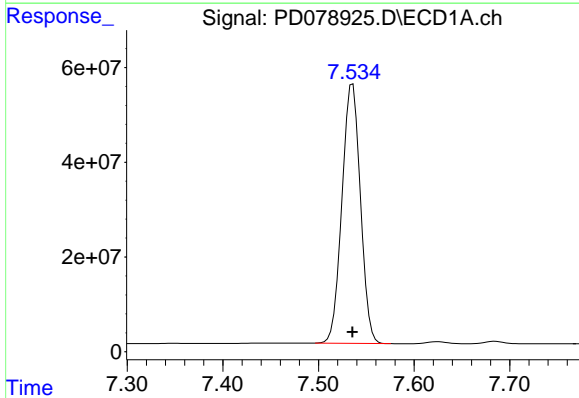
R.T.: 7.061 min  
Delta R.T.: 0.000 min  
Response: 290972065  
Conc: 167.84 ng/ml

Instrument :  
ECD\_D  
ClientSampleId :



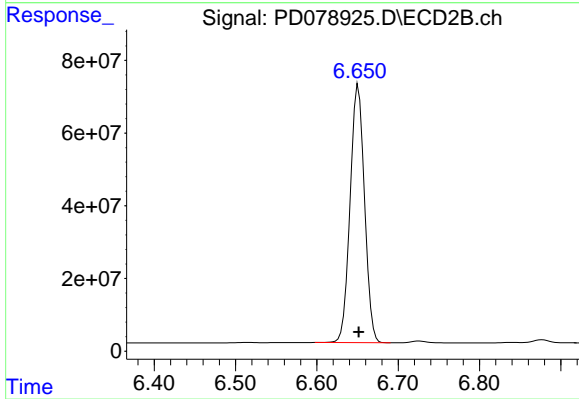
#17 4,4'-DDT

R.T.: 6.076 min  
Delta R.T.: 0.000 min  
Response: 371200020  
Conc: 167.68 ng/ml



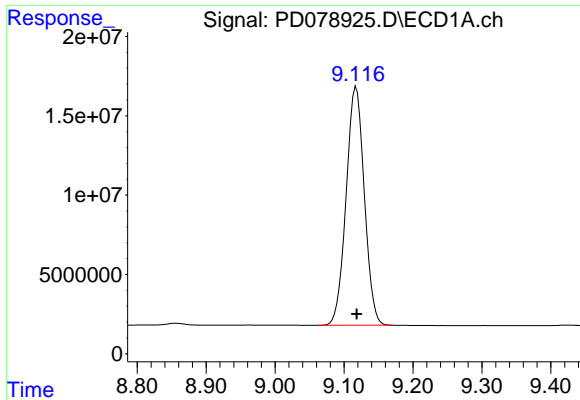
#20 Methoxychlor

R.T.: 7.536 min  
Delta R.T.: 0.000 min  
Response: 736942986  
Conc: 794.90 ng/ml



#20 Methoxychlor

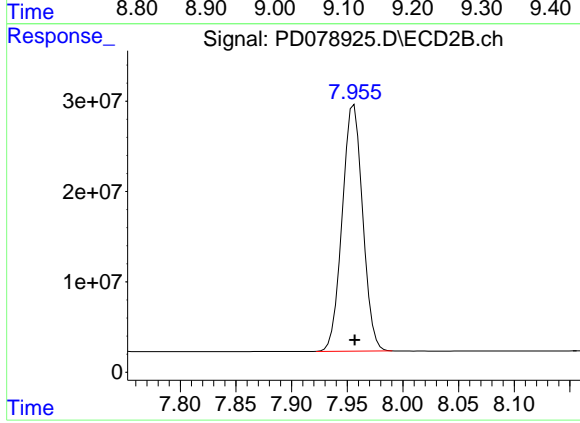
R.T.: 6.651 min  
Delta R.T.: 0.000 min  
Response: 870302498  
Conc: 714.15 ng/ml



#27 Decachlorobiphenyl

R.T.: 9.118 min  
Delta R.T.: 0.000 min  
Response: 275506562  
Conc: 148.08 ng/ml

Instrument :  
ECD\_D  
ClientSampleId :



#27 Decachlorobiphenyl

R.T.: 7.956 min  
Delta R.T.: 0.000 min  
Response: 349137211  
Conc: 154.66 ng/ml