

Data Path : Z:\pestpcbsrv\HPCHEM1\ECD_D\Data\PD101918\
 Data File : PD049875.D
 Signal(s) : Signal #1: ECD1A.CH Signal #2: ECD2B.CH
 Acq On : 18 Oct 2018 21:49
 Operator : AJ\SJ
 Sample : INDB101
 Misc :
 ALS Vial : 31 Sample Multiplier: 1

Instrument :
 ECD_D
 ClientSampleID :
 INDB101

Integration File signal 1: autoint1.e
 Integration File signal 2: autoint2.e
 Quant Time: Oct 19 05:00:59 2018
 Quant Method : Z:\pestpcbsrv\HPCHEM1\ECD_D\Method\PD101918CLP.M
 Quant Title : GC Extractables
 QLast Update : Fri Oct 19 04:42:58 2018
 Response via : Initial Calibration
 Integrator: ChemStation 6890 Scale Mode: Large solvent peaks clipped

Volume Inj. : 1 µl
 Signal #1 Phase : ZB-MR2 Signal #2 Phase: ZB-MR1
 Signal #1 Info : 30M x 0.32mm x0.2 Signal #2 Info : 30M x 0.32mm x 0.50µm

	Compound	RT#1	RT#2	Resp#1	Resp#2	ng/ml	ng/ml

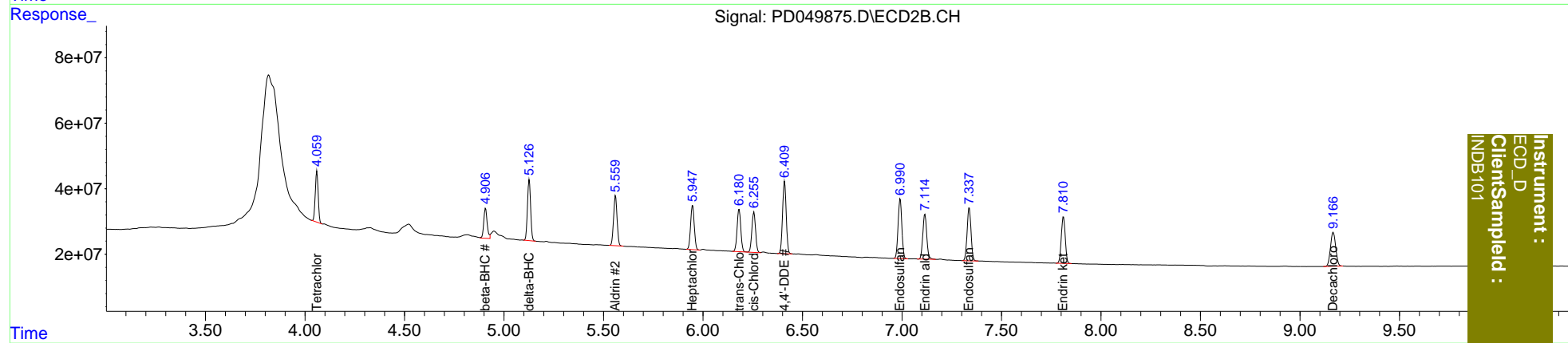
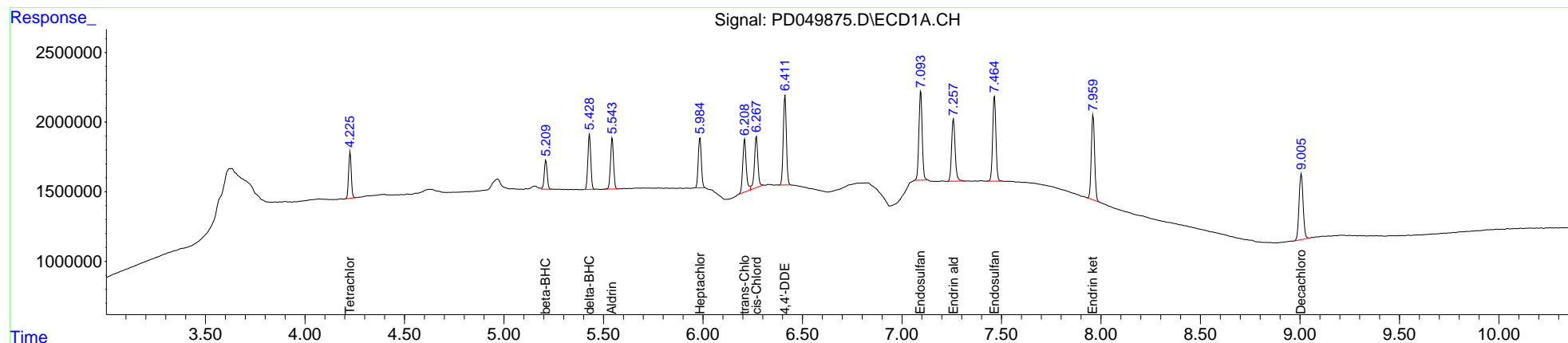
System Monitoring Compounds							
1)	SA Tetrachlo...	4.227	4.060	3155459	155.9E6	5.087	5.459
27)	SA Decachlor...	9.007	9.167	6795017	190.1E6	10.749	11.343
Target Compounds							
5)	MB Aldrin	5.544	5.561	3901753	187.1E6	4.852	5.428
6)	B beta-BHC	5.211	4.908	2141436	107.7E6	5.275	5.818
7)	B delta-BHC	5.430	5.127	3992717	207.0E6	4.768	5.409
8)	B Heptachlo...	5.985	5.948	3894137	173.1E6	5.015	5.573
10)	B trans-Chl...	6.209	6.182	4596628	167.7E6	5.480	5.495
11)	B cis-Chlor...	6.269	6.256	4521008	158.8E6	5.527	5.495
12)	B 4,4'-DDE	6.412	6.410	7026632	283.3E6	9.464	10.690
15)	B Endosulfa...	7.094	6.991	7378232	240.9E6	10.094	10.886
18)	B Endrin al...	7.259	7.115	5603396	187.8E6	10.222	10.974
19)	B Endosulfa...	7.465	7.338	6980425	221.7E6	10.213	10.982
21)	B Endrin ke...	7.961	7.812	7012146	195.4E6	9.932	10.702

(f)=RT Delta > 1/2 Window (#)=Amounts differ by > 25% (m)=manual int.

Data Path : Z:\pestpcbsrv\HPCHEM1\ECD_D\Data\PD101918\
 Data File : PD049875.D
 Signal(s) : Signal #1: ECD1A.CH Signal #2: ECD2B.CH
 Acq On : 18 Oct 2018 21:49
 Operator : AJ\SJ
 Sample : INDB101
 Misc :
 ALS Vial : 31 Sample Multiplier: 1

Integration File signal 1: autoint1.e
 Integration File signal 2: autoint2.e
 Quant Time: Oct 19 05:00:59 2018
 Quant Method : Z:\pestpcbsrv\HPCHEM1\ECD_D\Method\PD101918CLP.M
 Quant Title : GC Extractables
 QLast Update : Fri Oct 19 04:42:58 2018
 Response via : Initial Calibration
 Integrator: ChemStation 6890 Scale Mode: Large solvent peaks clipped

Volume Inj. : 1 µl
 Signal #1 Phase : ZB-MR2 Signal #2 Phase: ZB-MR1
 Signal #1 Info : 30M x 0.32mm x0.2 Signal #2 Info : 30M x 0.32mm x 0.50µm



Instrument :
 ECD_D
 ClientSampleId :
 INDB101