

Data Path : Z:\pestpcbsrv\HPCHEM1\ECD\_D\Data\PD101918\  
 Data File : PD049895.D  
 Signal(s) : Signal #1: ECD1A.CH Signal #2: ECD2B.CH  
 Acq On : 19 Oct 2018 2:29  
 Operator : AJ\SJ  
 Sample : J5368-06  
 Misc :  
 ALS Vial : 50 Sample Multiplier: 1

Instrument :  
 ECD\_D  
 ClientSampleId :  
 A3Z47

Manual Integrations  
 APPROVED

Sohil  
 10/19/2018 6:44:44 PM

Integration File signal 1: autoint1.e  
 Integration File signal 2: autoint2.e  
 Quant Time: Oct 19 05:49:48 2018  
 Quant Method : Z:\pestpcbsrv\HPCHEM1\ECD\_D\Method\PD101918CLP.M  
 Quant Title : GC Extractables  
 QLast Update : Fri Oct 19 05:13:06 2018  
 Response via : Initial Calibration  
 Integrator: ChemStation 6890 Scale Mode: Large solvent peaks clipped

Volume Inj. : 1 µl  
 Signal #1 Phase : ZB-MR2 Signal #2 Phase: ZB-MR1  
 Signal #1 Info : 30M x 0.32mm x0.2 Signal #2 Info : 30M x 0.32mm x 0.50µm

Compound	RT#1	RT#2	Resp#1	Resp#2	ng/ml	ng/ml
-----						
System Monitoring Compounds						
1) SA Tetrachlo...	4.228	4.060	5742710	258.6E6	8.682	8.551
27) SA Decachlor...	9.009	9.166	12369210	325.2E6	18.513	18.302m

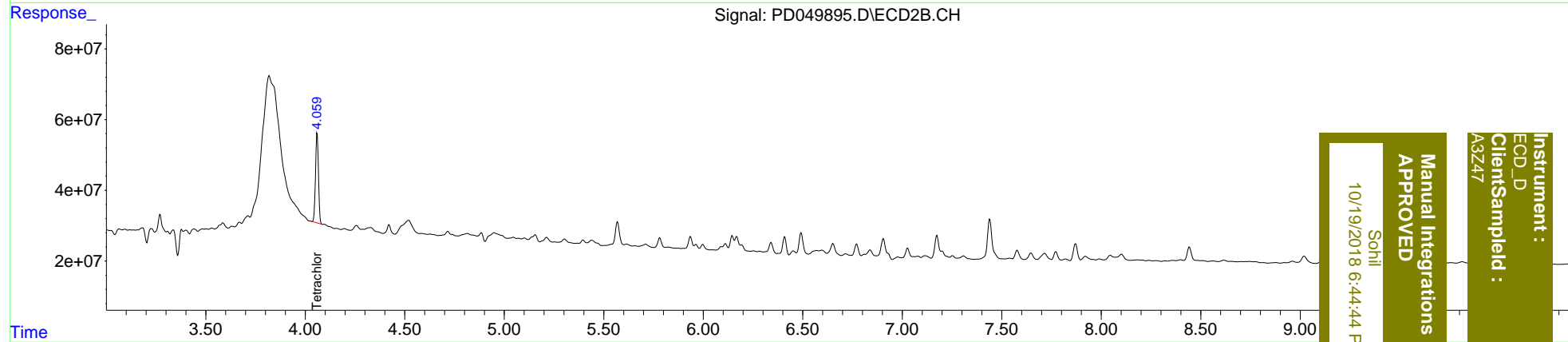
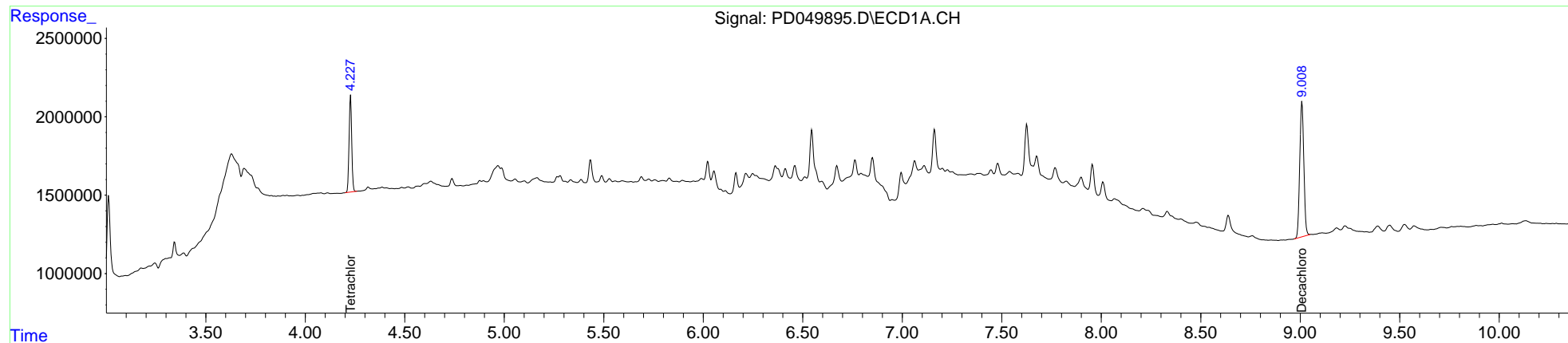
Target Compounds

(f)=RT Delta > 1/2 Window (#)=Amounts differ by > 25% (m)=manual int.

Data Path : Z:\pestpcbsrv\HPCHEM1\ECD\_D\Data\PD101918\  
 Data File : PD049895.D  
 Signal(s) : Signal #1: ECD1A.CH Signal #2: ECD2B.CH  
 Acq On : 19 Oct 2018 2:29  
 Operator : AJ\SJ  
 Sample : J5368-06  
 Misc :  
 ALS Vial : 50 Sample Multiplier: 1

Integration File signal 1: autoint1.e  
 Integration File signal 2: autoint2.e  
 Quant Time: Oct 19 05:49:48 2018  
 Quant Method : Z:\pestpcbsrv\HPCHEM1\ECD\_D\Method\PD101918CLP.M  
 Quant Title : GC Extractables  
 QLast Update : Fri Oct 19 05:13:06 2018  
 Response via : Initial Calibration  
 Integrator: ChemStation 6890 Scale Mode: Large solvent peaks clipped

Volume Inj. : 1 µl  
 Signal #1 Phase : ZB-MR2 Signal #2 Phase: ZB-MR1  
 Signal #1 Info : 30M x 0.32mm x0.2 Signal #2 Info : 30M x 0.32mm x 0.50µm



Instrument : ECD\_D  
 Client Sample Id : A3Z47  
 Manual Integrations APPROVED  
 Sohli  
 10/19/2018 6:44:44 PM