

Data Path : Z:\pestpcbsrv\HPCHEM1\ECD\_D\Data\PD101918\  
 Data File : PD049899.D  
 Signal(s) : Signal #1: ECD1A.CH Signal #2: ECD2B.CH  
 Acq On : 19 Oct 2018 3:25  
 Operator : AJ\SJ  
 Sample : J5362-02  
 Misc :  
 ALS Vial : 54 Sample Multiplier: 1

Instrument :  
 ECD\_D  
 ClientSampleId :  
 C0AL2

Integration File signal 1: autoint1.e  
 Integration File signal 2: autoint2.e  
 Quant Time: Oct 19 05:50:20 2018  
 Quant Method : Z:\pestpcbsrv\HPCHEM1\ECD\_D\Method\PD101918CLP.M  
 Quant Title : GC Extractables  
 QLast Update : Fri Oct 19 05:13:06 2018  
 Response via : Initial Calibration  
 Integrator: ChemStation 6890 Scale Mode: Large solvent peaks clipped

Volume Inj. : 1 µl  
 Signal #1 Phase : ZB-MR2 Signal #2 Phase: ZB-MR1  
 Signal #1 Info : 30M x 0.32mm x0.2 Signal #2 Info : 30M x 0.32mm x 0.50µm

| Compound                    | RT#1  | RT#2  | Resp#1   | Resp#2  | ng/ml  | ng/ml  |
|-----------------------------|-------|-------|----------|---------|--------|--------|
| -----                       |       |       |          |         |        |        |
| System Monitoring Compounds |       |       |          |         |        |        |
| 1) SA Tetrachlo...          | 4.228 | 4.060 | 13111335 | 592.3E6 | 19.822 | 19.583 |
| 27) SA Decachlor...         | 9.009 | 9.169 | 19956251 | 535.0E6 | 29.869 | 30.110 |

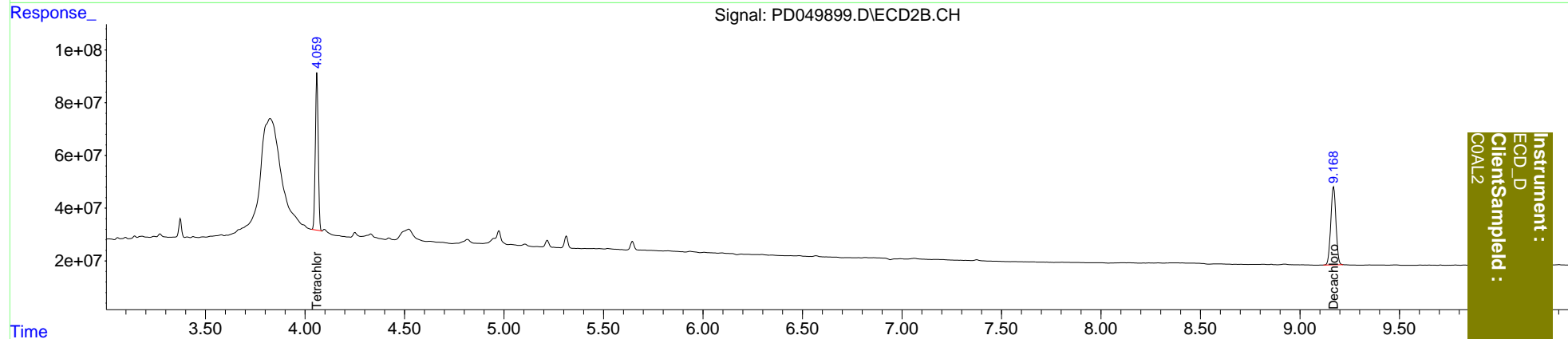
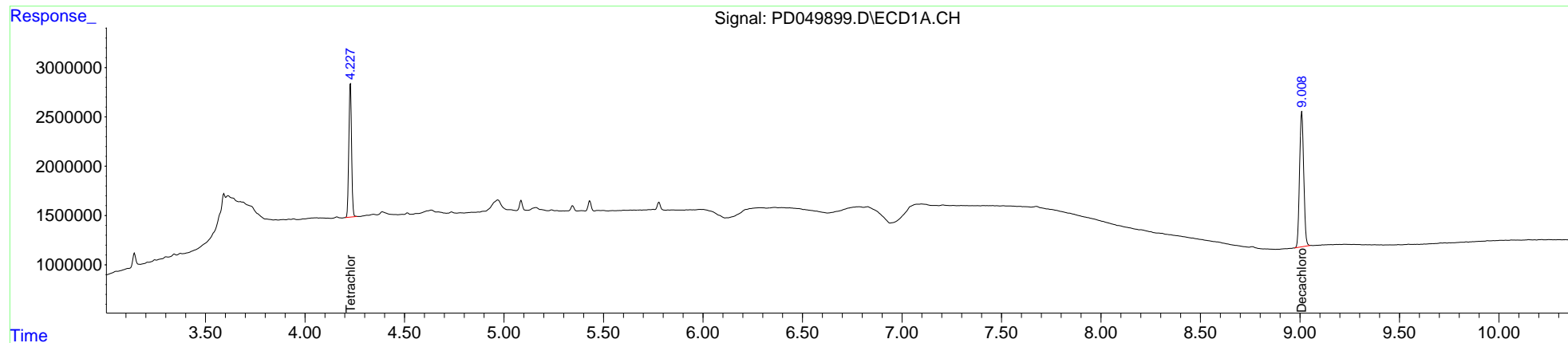
Target Compounds

(f)=RT Delta > 1/2 Window (#)=Amounts differ by > 25% (m)=manual int.

Data Path : Z:\pestpcbsrv\HPCHEM1\ECD\_D\Data\PD101918\  
 Data File : PD049899.D  
 Signal(s) : Signal #1: ECD1A.CH Signal #2: ECD2B.CH  
 Acq On : 19 Oct 2018 3:25  
 Operator : AJ\SJ  
 Sample : J5362-02  
 Misc :  
 ALS Vial : 54 Sample Multiplier: 1

Integration File signal 1: autoint1.e  
 Integration File signal 2: autoint2.e  
 Quant Time: Oct 19 05:50:20 2018  
 Quant Method : Z:\pestpcbsrv\HPCHEM1\ECD\_D\Method\PD101918CLP.M  
 Quant Title : GC Extractables  
 QLast Update : Fri Oct 19 05:13:06 2018  
 Response via : Initial Calibration  
 Integrator: ChemStation 6890 Scale Mode: Large solvent peaks clipped

Volume Inj. : 1 µl  
 Signal #1 Phase : ZB-MR2 Signal #2 Phase: ZB-MR1  
 Signal #1 Info : 30M x 0.32mm x0.2 Signal #2 Info : 30M x 0.32mm x 0.50µm



Instrument :  
 ECD\_D  
 ClientSampleId :  
 COAL2