

Data Path : Z:\pestpcbsrv\HPCHEM1\ECD_D\Data\PD101918\
 Data File : PD049906.D
 Signal(s) : Signal #1: ECD1A.CH Signal #2: ECD2B.CH
 Acq On : 19 Oct 2018 5:03
 Operator : AJ\SJ
 Sample : PIBLK32
 Misc :
 ALS Vial : 40 Sample Multiplier: 1

Instrument :
 ECD_D
 ClientSampleId :
 PIBLK32

Integration File signal 1: autoint1.e
 Integration File signal 2: autoint2.e
 Quant Time: Oct 19 05:51:08 2018
 Quant Method : Z:\pestpcbsrv\HPCHEM1\ECD_D\Method\PD101918CLP.M
 Quant Title : GC Extractables
 QLast Update : Fri Oct 19 05:13:06 2018
 Response via : Initial Calibration
 Integrator: ChemStation 6890 Scale Mode: Large solvent peaks clipped

Volume Inj. : 1 µl
 Signal #1 Phase : ZB-MR2 Signal #2 Phase: ZB-MR1
 Signal #1 Info : 30M x 0.32mm x0.2 Signal #2 Info : 30M x 0.32mm x 0.50µm

Compound	RT#1	RT#2	Resp#1	Resp#2	ng/ml	ng/ml

System Monitoring Compounds						
1) SA Tetrachlo...	4.228	4.060	10040735	484.5E6	15.180	16.017
27) SA Decachlor...	9.010	9.168	20815255	573.0E6	31.154	32.245

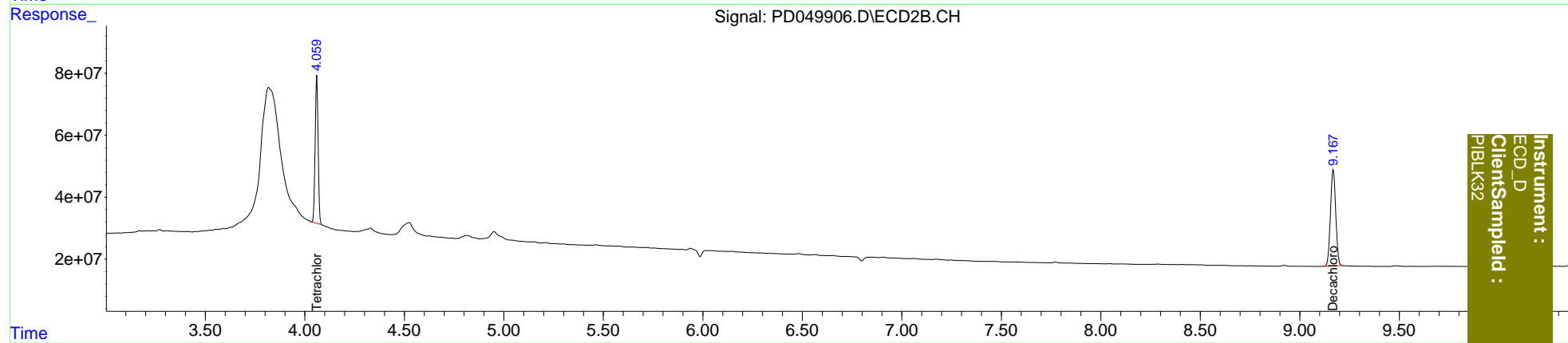
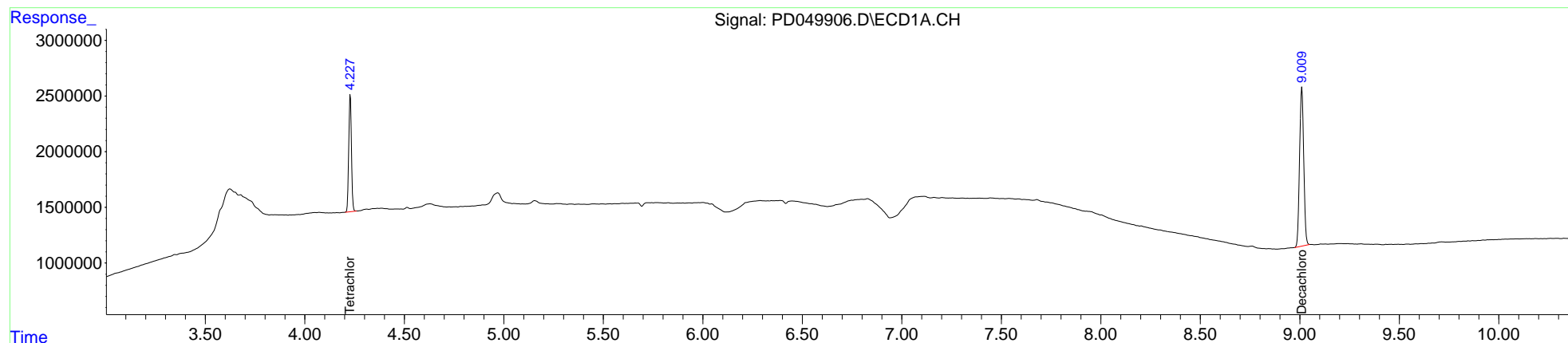
Target Compounds

 (f)=RT Delta > 1/2 Window (#)=Amounts differ by > 25% (m)=manual int.

Data Path : Z:\pestpcbsrv\HPCHEM1\ECD_D\Data\PD101918\
 Data File : PD049906.D
 Signal(s) : Signal #1: ECD1A.CH Signal #2: ECD2B.CH
 Acq On : 19 Oct 2018 5:03
 Operator : AJ\SJ
 Sample : PIBLK32
 Misc :
 ALS Vial : 40 Sample Multiplier: 1

Integration File signal 1: autoint1.e
 Integration File signal 2: autoint2.e
 Quant Time: Oct 19 05:51:08 2018
 Quant Method : Z:\pestpcbsrv\HPCHEM1\ECD_D\Method\PD101918CLP.M
 Quant Title : GC Extractables
 QLast Update : Fri Oct 19 05:13:06 2018
 Response via : Initial Calibration
 Integrator: ChemStation 6890 Scale Mode: Large solvent peaks clipped

Volume Inj. : 1 µl
 Signal #1 Phase : ZB-MR2 Signal #2 Phase: ZB-MR1
 Signal #1 Info : 30M x 0.32mm x 0.2 Signal #2 Info : 30M x 0.32mm x 0.50µm



Instrument :
 ECD_D
 ClientSampleId :
 PIBLK32