

Data Path : Z:\pestpcbsrv\HPCHEM1\ECD_D\Data\PD101920\
 Data File : PD059816.D
 Signal(s) : Signal #1: ECD1A.ch Signal #2: ECD2B.ch
 Acq On : 19 Oct 2020 15:56
 Operator : DD\AJ
 Sample : PSTDIC025
 Misc :
 ALS Vial : 8 Sample Multiplier: 1

Instrument :
 ECD_D
 ClientSampleId :

Integration File signal 1: autoint1.e
 Integration File signal 2: autoint2.e
 Quant Time: Oct 20 06:47:08 2020
 Quant Method : Z:\pestpcbsrv\HPCHEM1\ECD_D\Method\PD101920.M
 Quant Title : GC Extractables
 QLast Update : Tue Oct 20 06:36:26 2020
 Response via : Initial Calibration
 Integrator: ChemStation

Volume Inj. : 2 µl
 Signal #1 Phase : ZB-MR2 Signal #2 Phase: ZB-MR1
 Signal #1 Info : 30M x 0.32mm x0.2 Signal #2 Info : 30M x 0.32mm x 0.50µm

Compound	RT#1	RT#2	Resp#1	Resp#2	ng/ml	ng/ml

System Monitoring Compounds						
1) SA Tetrachlo...	3.507	4.024	36758907	60247388	25.059	24.653
28) SA Decachlor...	8.306	9.107	39249891	45527102	25.618	25.954
Target Compounds						
2) A alpha-BHC	3.949	4.414	58625191	92535574	24.111	24.025
3) MA gamma-BHC...	4.235	4.700	55307230	85371131	24.341	24.114
4) MA Heptachlor	4.543	5.212	57948977	85188236	24.435	25.046
5) MB Aldrin	4.795	5.518	54268078	76753001	24.290	24.315
6) B beta-BHC	4.485	4.867	23183547	36847608	25.418	25.405
7) B delta-BHC	4.694	5.087	53547408	69257181	24.227	23.368
8) B Heptachlo...	5.241	5.905	50315478	67744306	24.712	24.442
9) A Endosulfan I	5.584	6.262	45655371	65597501	24.000	24.669
10) B gamma-Chl...	5.471	6.138	49221808	71182279	23.648	24.357
11) B alpha-Chl...	5.530	6.212	49172884	71256277	23.915	24.609
12) B 4,4'-DDE	5.694	6.367	48913726	66688316	24.093	24.143
13) MA Dieldrin	5.830	6.520	49779009	69870417	24.119	24.415
14) MA Endrin	6.088	6.738	45010750	60645711	24.447	24.360
15) B Endosulfa...	6.363	6.946	45519623	62922662	25.367	25.257
16) A 4,4'-DDD	6.214	6.857	40626992	56352763	24.459	24.478
17) MA 4,4'-DDT	6.457	7.156	43577746	58000241	24.278	24.422
18) B Endrin al...	6.532	7.070	35597046	51291852	25.004	25.014
19) B Endosulfa...	6.746	7.292	39430543	56668702	24.837	25.035
20) A Methoxychlor	7.006	7.613	23930025	31818189	25.079	25.401
21) B Endrin ke...	7.241	7.765	46485366	61806395	24.843	25.173
22) Mirex	7.436	8.222	35474351	41050217	26.028	25.576

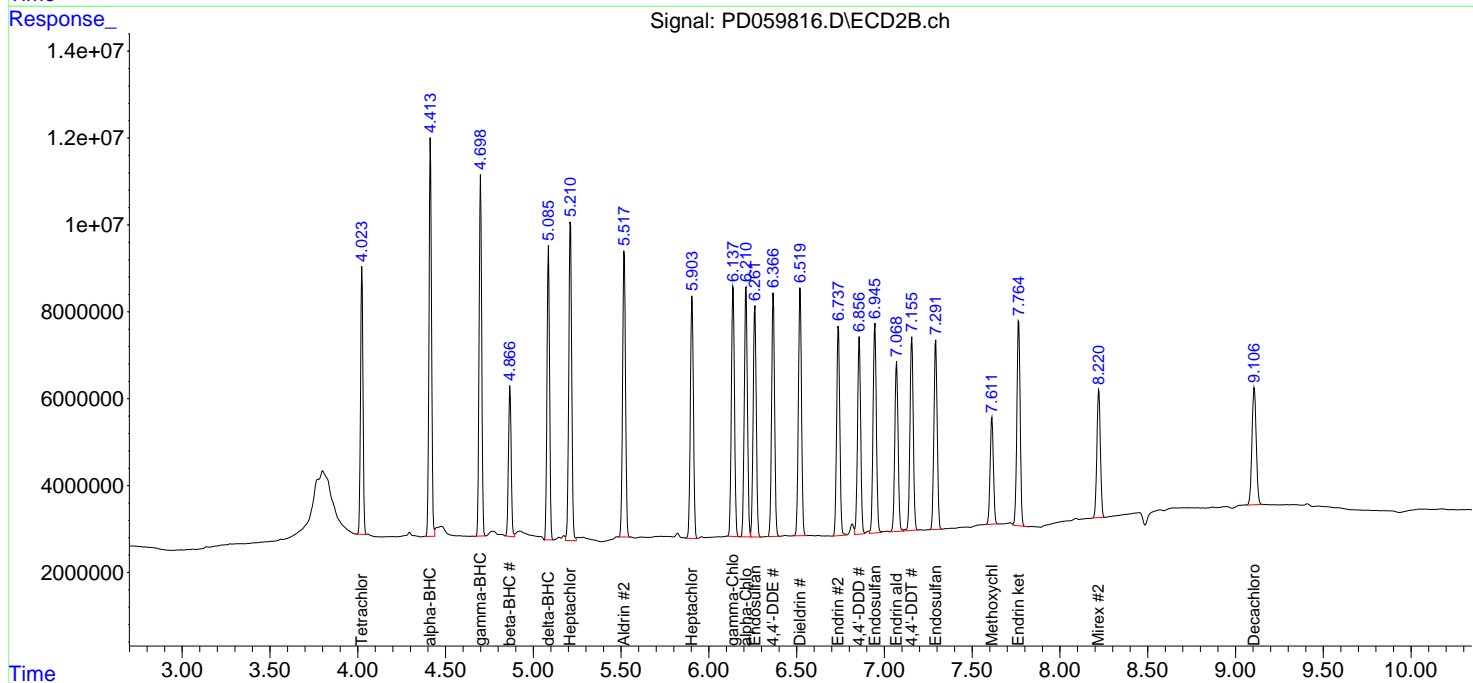
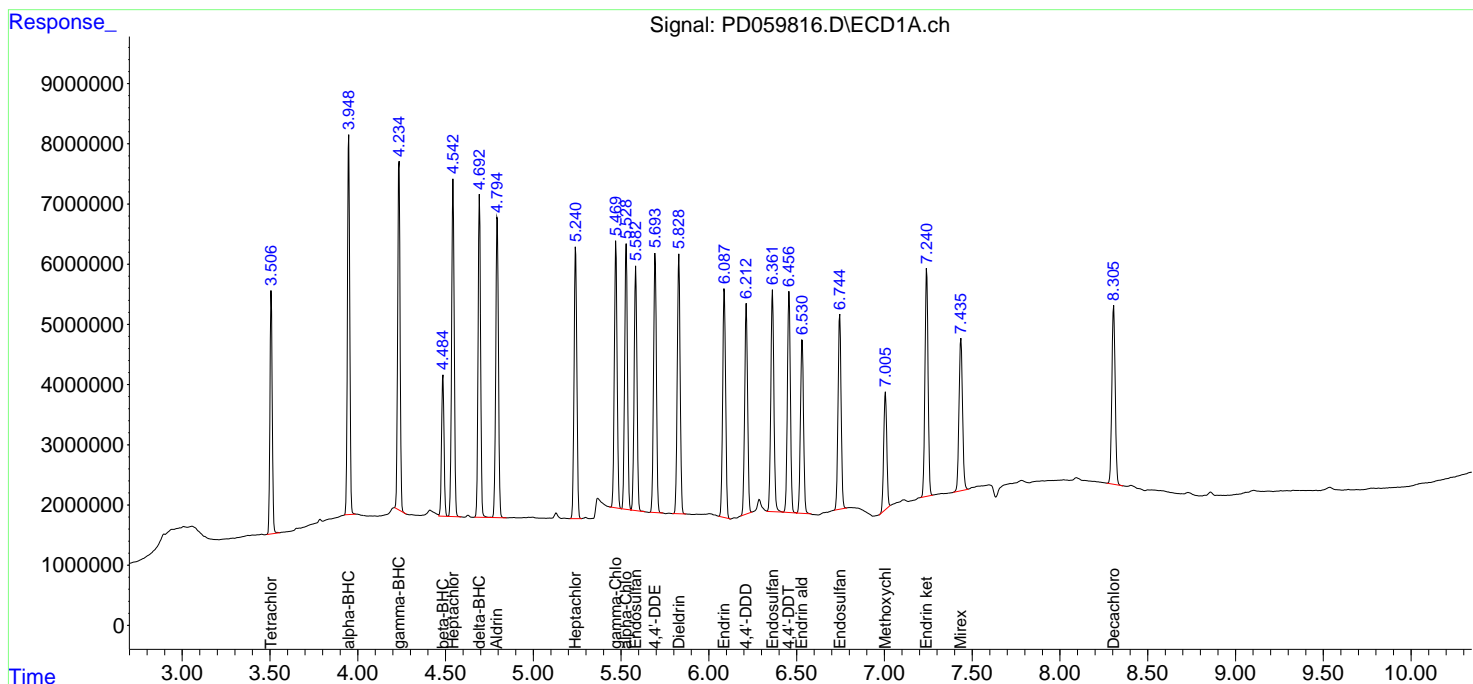
(f)=RT Delta > 1/2 Window (#)=Amounts differ by > 25% (m)=manual int.

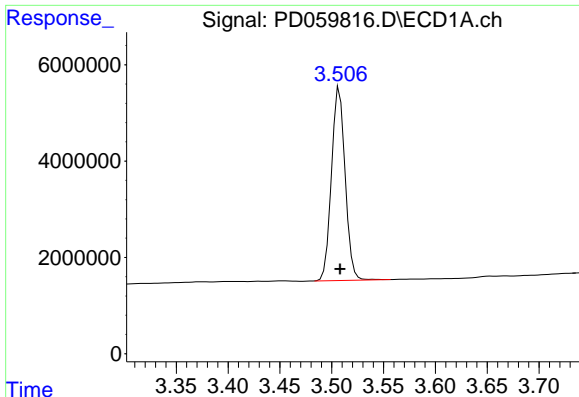
Data Path : Z:\pestpcbsrv\HPCHEM1\ECD_D\Data\PD101920\
 Data File : PD059816.D
 Signal(s) : Signal #1: ECD1A.ch Signal #2: ECD2B.ch
 Acq On : 19 Oct 2020 15:56
 Operator : DD\AJ
 Sample : PSTDICC025
 Misc :
 ALS Vial : 8 Sample Multiplier: 1

Instrument :
 ECD_D
 ClientSampled :

Integration File signal 1: autoint1.e
 Integration File signal 2: autoint2.e
 Quant Time: Oct 20 06:47:08 2020
 Quant Method : Z:\pestpcbsrv\HPCHEM1\ECD_D\Method\PD101920.M
 Quant Title : GC Extractables
 QLast Update : Tue Oct 20 06:36:26 2020
 Response via : Initial Calibration
 Integrator: ChemStation

Volume Inj. : 2 µl
 Signal #1 Phase : ZB-MR2 Signal #2 Phase: ZB-MR1
 Signal #1 Info : 30M x 0.32mm x0.2 Signal #2 Info : 30M x 0.32mm x 0.50µm

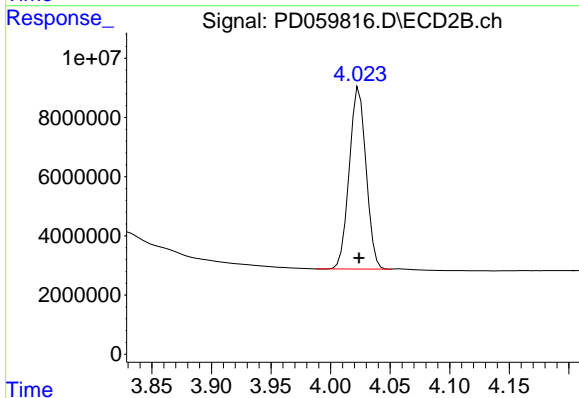




#1 Tetrachloro-m-xylene

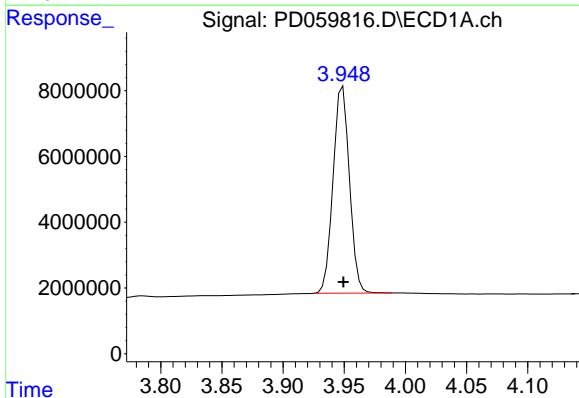
R.T.: 3.507 min
 Delta R.T.: 0.000 min
 Response: 36758907
 Conc: 25.06 ng/ml

Instrument :
 ECD_D
 ClientSampled :



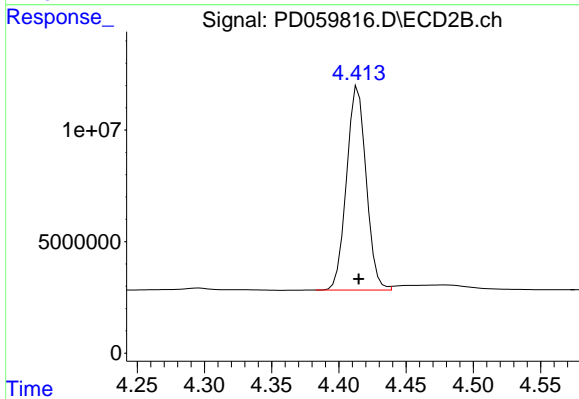
#1 Tetrachloro-m-xylene

R.T.: 4.024 min
 Delta R.T.: 0.000 min
 Response: 60247388
 Conc: 24.65 ng/ml



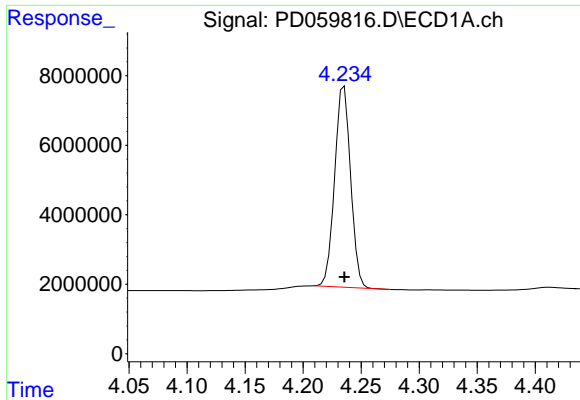
#2 alpha-BHC

R.T.: 3.949 min
 Delta R.T.: 0.000 min
 Response: 58625191
 Conc: 24.11 ng/ml



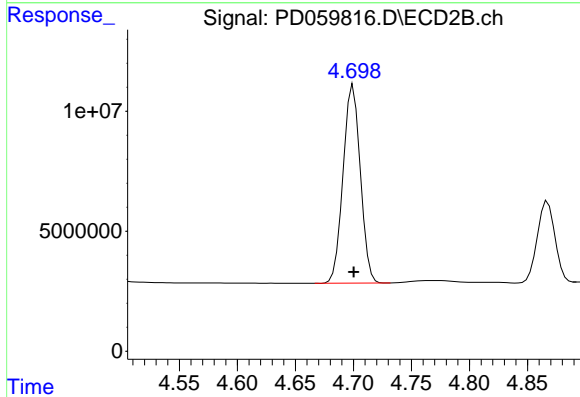
#2 alpha-BHC

R.T.: 4.414 min
 Delta R.T.: 0.000 min
 Response: 92535574
 Conc: 24.03 ng/ml

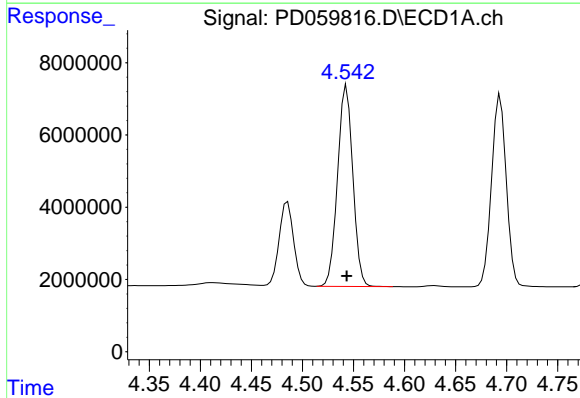


#3 gamma-BHC (Lindane)
 R.T.: 4.235 min
 Delta R.T.: 0.000 min
 Response: 55307230
 Conc: 24.34 ng/ml

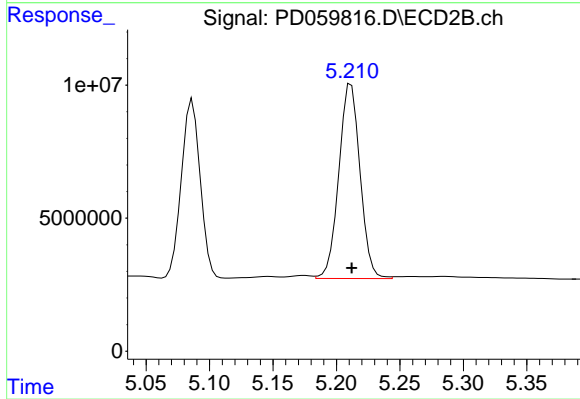
Instrument :
 ECD_D
 ClientSampled :



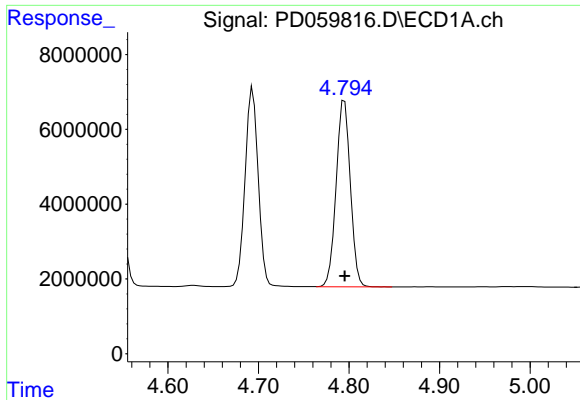
#3 gamma-BHC (Lindane)
 R.T.: 4.700 min
 Delta R.T.: 0.000 min
 Response: 85371131
 Conc: 24.11 ng/ml



#4 Heptachlor
 R.T.: 4.543 min
 Delta R.T.: 0.000 min
 Response: 57948977
 Conc: 24.43 ng/ml

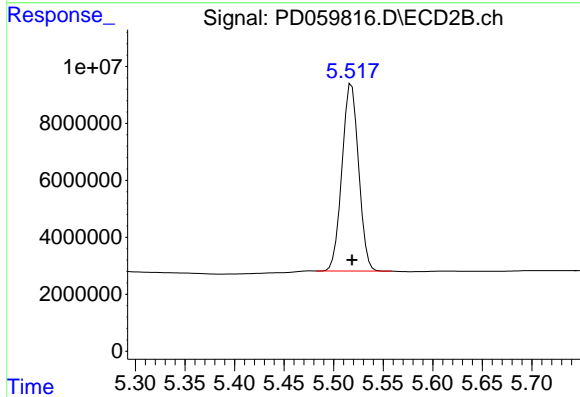


#4 Heptachlor
 R.T.: 5.212 min
 Delta R.T.: 0.000 min
 Response: 85188236
 Conc: 25.05 ng/ml

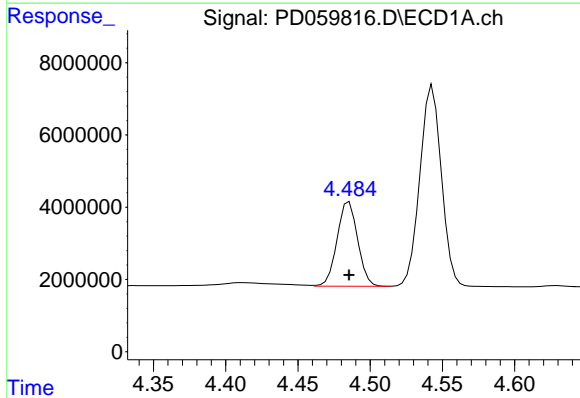


#5 Aldrin
 R.T.: 4.795 min
 Delta R.T.: 0.000 min
 Response: 54268078
 Conc: 24.29 ng/ml

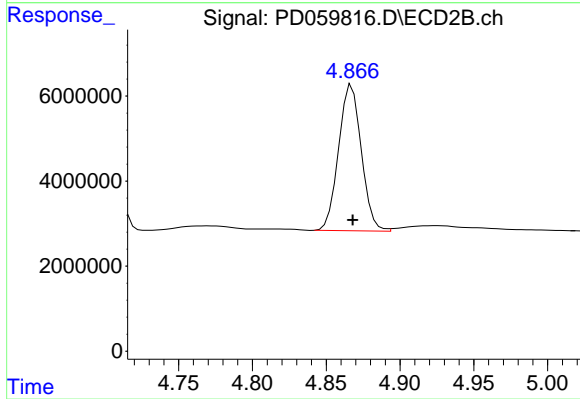
Instrument :
 ECD_D
 ClientSampleId :



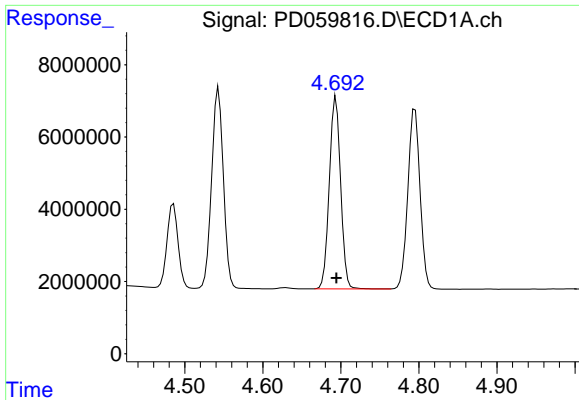
#5 Aldrin
 R.T.: 5.518 min
 Delta R.T.: 0.000 min
 Response: 76753001
 Conc: 24.32 ng/ml



#6 beta-BHC
 R.T.: 4.485 min
 Delta R.T.: 0.000 min
 Response: 23183547
 Conc: 25.42 ng/ml

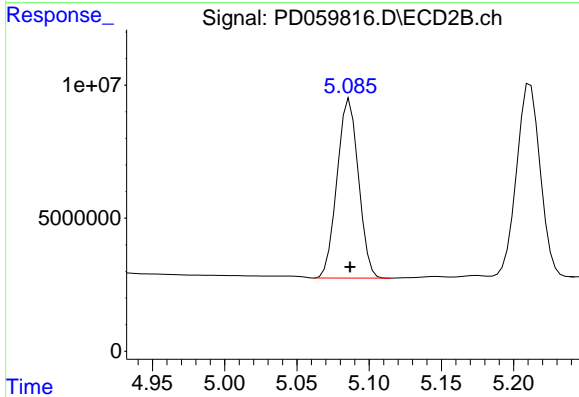


#6 beta-BHC
 R.T.: 4.867 min
 Delta R.T.: 0.000 min
 Response: 36847608
 Conc: 25.40 ng/ml

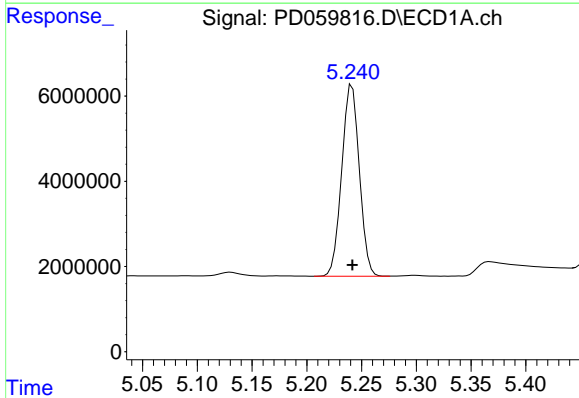


#7 delta-BHC
 R.T.: 4.694 min
 Delta R.T.: 0.000 min
 Response: 53547408
 Conc: 24.23 ng/ml

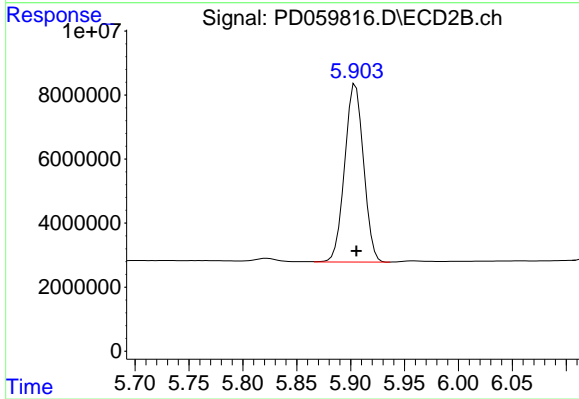
Instrument :
 ECD_D
 ClientSampleId :



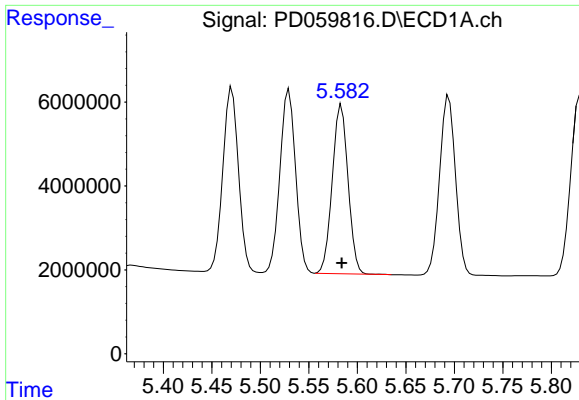
#7 delta-BHC
 R.T.: 5.087 min
 Delta R.T.: 0.000 min
 Response: 69257181
 Conc: 23.37 ng/ml



#8 Heptachlor epoxide
 R.T.: 5.241 min
 Delta R.T.: 0.000 min
 Response: 50315478
 Conc: 24.71 ng/ml



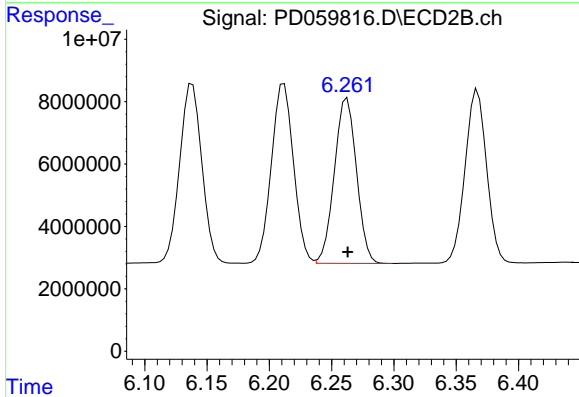
#8 Heptachlor epoxide
 R.T.: 5.905 min
 Delta R.T.: 0.000 min
 Response: 67744306
 Conc: 24.44 ng/ml



#9 Endosulfan I

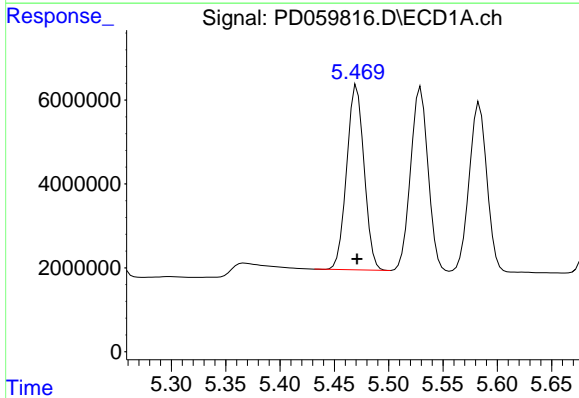
R.T.: 5.584 min
 Delta R.T.: 0.000 min
 Response: 45655371
 Conc: 24.00 ng/ml

Instrument :
 ECD_D
 ClientSampled :



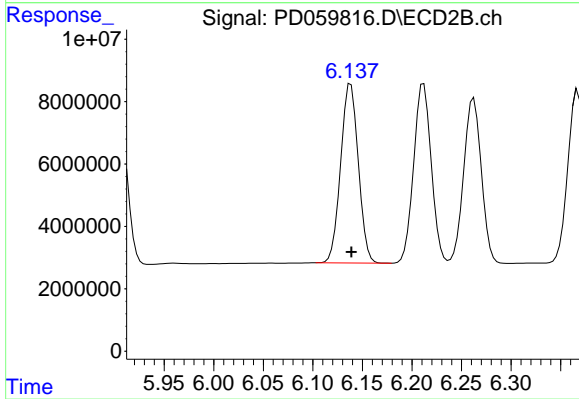
#9 Endosulfan I

R.T.: 6.262 min
 Delta R.T.: 0.000 min
 Response: 65597501
 Conc: 24.67 ng/ml



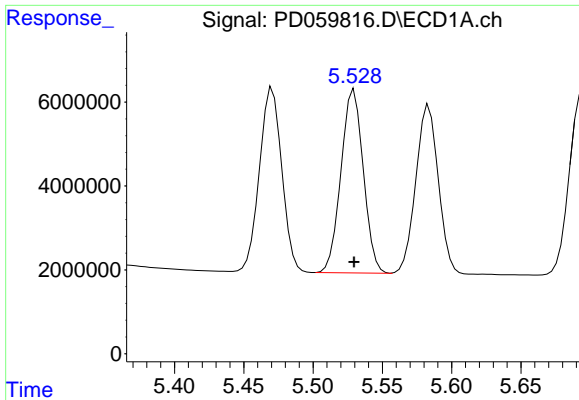
#10 gamma-Chlordane

R.T.: 5.471 min
 Delta R.T.: 0.000 min
 Response: 49221808
 Conc: 23.65 ng/ml



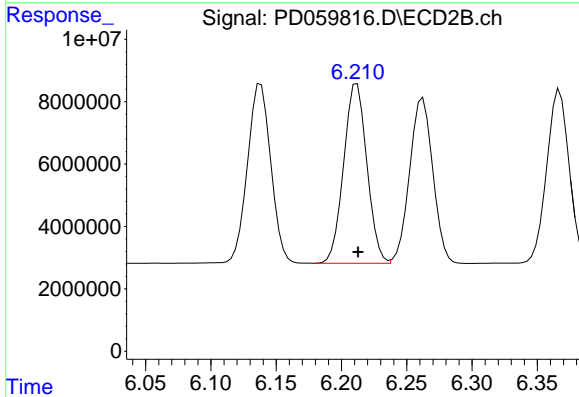
#10 gamma-Chlordane

R.T.: 6.138 min
 Delta R.T.: 0.000 min
 Response: 71182279
 Conc: 24.36 ng/ml

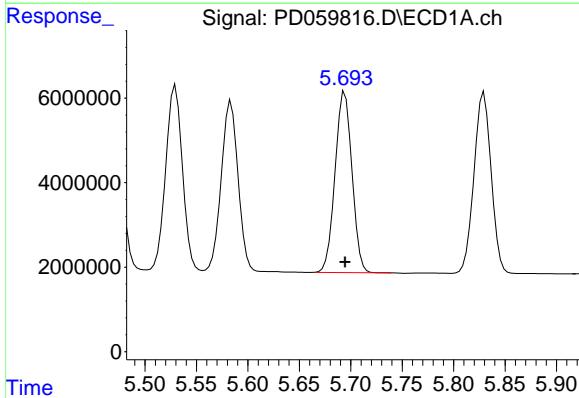


#11 alpha-Chlordane
 R.T.: 5.530 min
 Delta R.T.: 0.000 min
 Response: 49172884
 Conc: 23.91 ng/ml

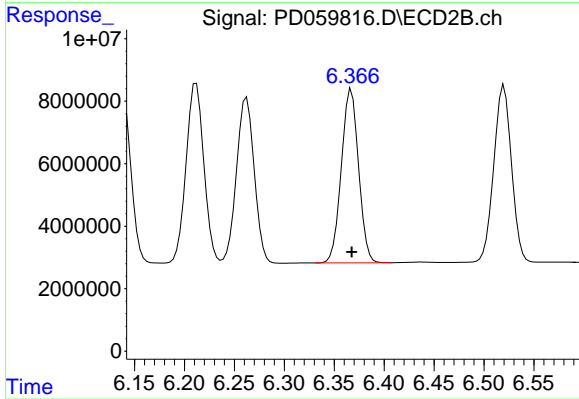
Instrument :
 ECD_D
 ClientSampleId :



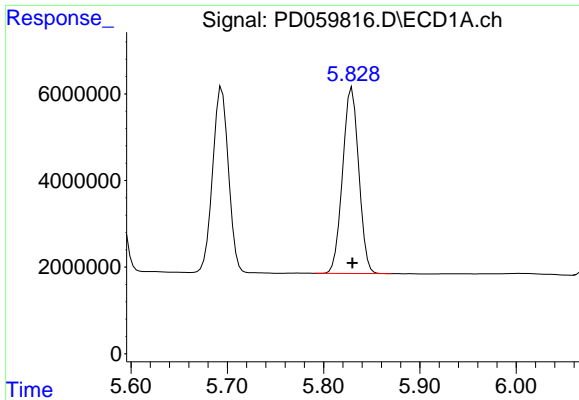
#11 alpha-Chlordane
 R.T.: 6.212 min
 Delta R.T.: 0.000 min
 Response: 71256277
 Conc: 24.61 ng/ml



#12 4,4'-DDE
 R.T.: 5.694 min
 Delta R.T.: 0.000 min
 Response: 48913726
 Conc: 24.09 ng/ml

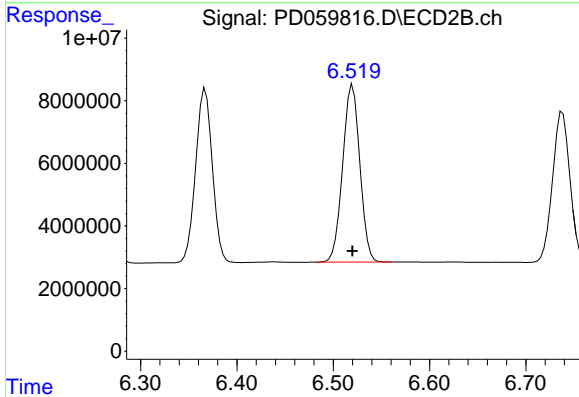


#12 4,4'-DDE
 R.T.: 6.367 min
 Delta R.T.: 0.000 min
 Response: 66688316
 Conc: 24.14 ng/ml

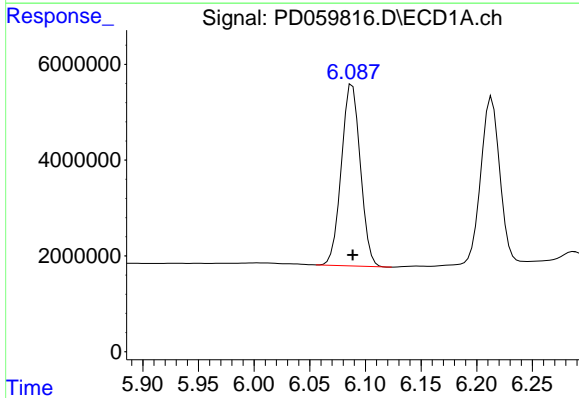


#13 Dieldrin
 R.T.: 5.830 min
 Delta R.T.: 0.000 min
 Response: 49779009
 Conc: 24.12 ng/ml

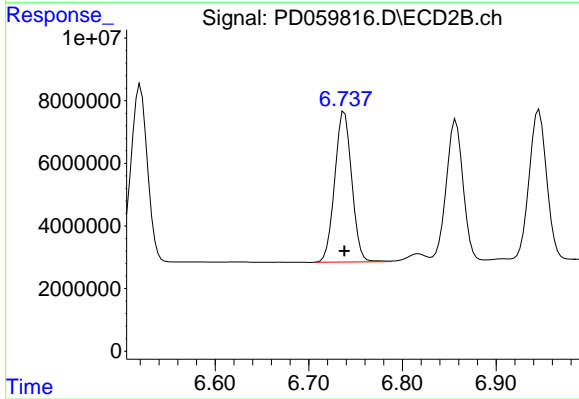
Instrument :
 ECD_D
 ClientSampled :



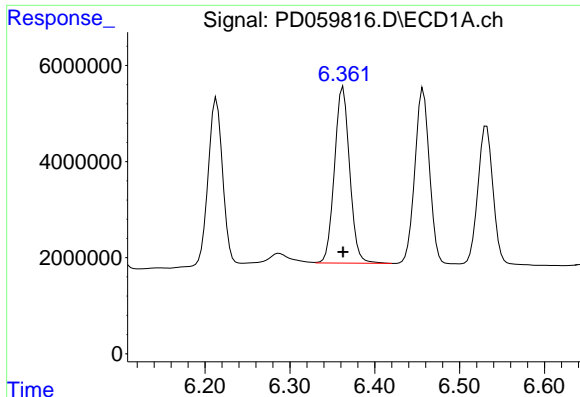
#13 Dieldrin
 R.T.: 6.520 min
 Delta R.T.: 0.000 min
 Response: 69870417
 Conc: 24.42 ng/ml



#14 Endrin
 R.T.: 6.088 min
 Delta R.T.: 0.000 min
 Response: 45010750
 Conc: 24.45 ng/ml



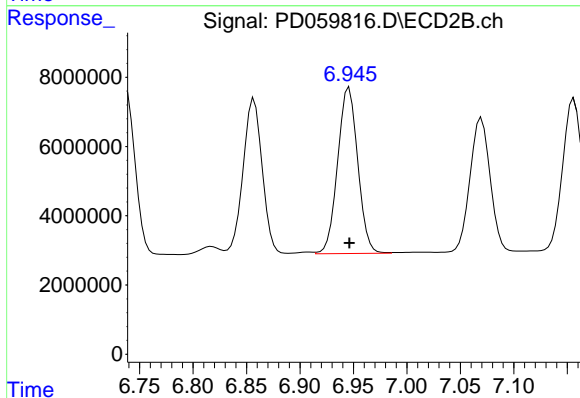
#14 Endrin
 R.T.: 6.738 min
 Delta R.T.: 0.000 min
 Response: 60645711
 Conc: 24.36 ng/ml



#15 Endosulfan II

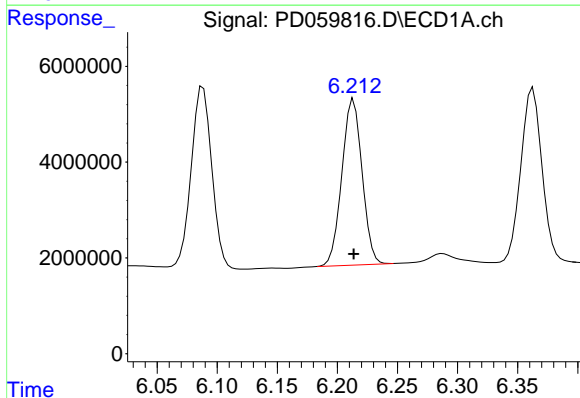
R.T.: 6.363 min
 Delta R.T.: 0.000 min
 Response: 45519623
 Conc: 25.37 ng/ml

Instrument :
 ECD_D
 ClientSampled :



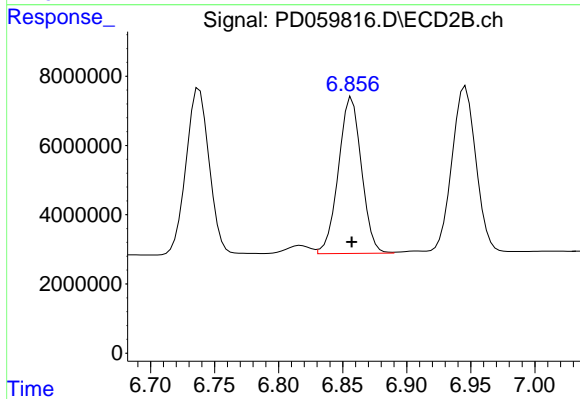
#15 Endosulfan II

R.T.: 6.946 min
 Delta R.T.: 0.000 min
 Response: 62922662
 Conc: 25.26 ng/ml



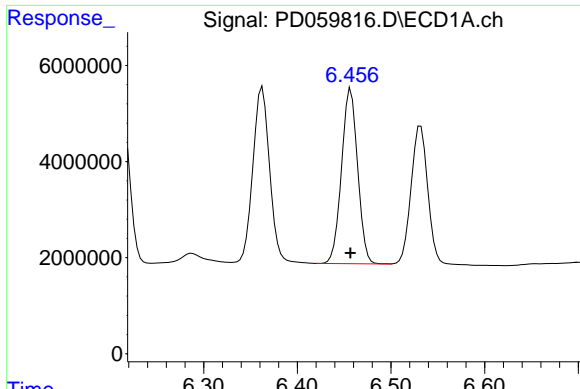
#16 4,4'-DDD

R.T.: 6.214 min
 Delta R.T.: 0.000 min
 Response: 40626992
 Conc: 24.46 ng/ml



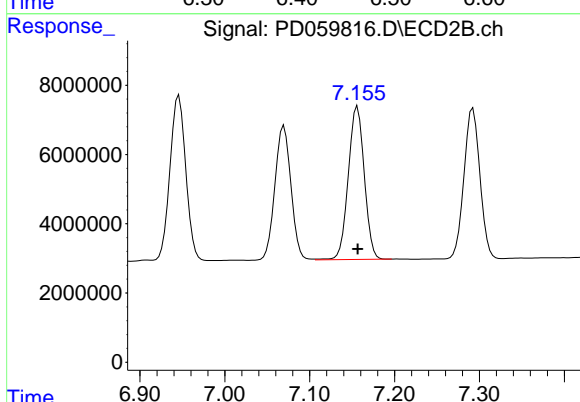
#16 4,4'-DDD

R.T.: 6.857 min
 Delta R.T.: 0.000 min
 Response: 56352763
 Conc: 24.48 ng/ml

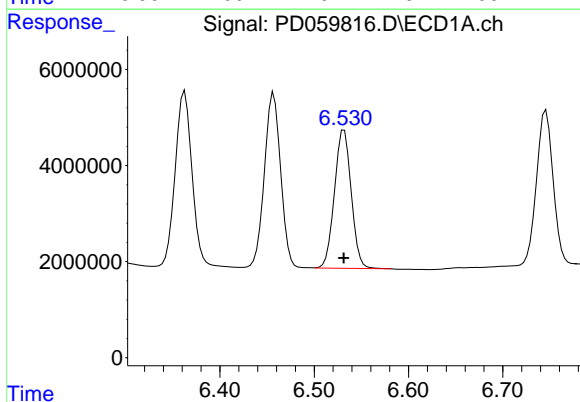


#17 4,4'-DDT
R.T.: 6.457 min
Delta R.T.: 0.000 min
Response: 43577746
Conc: 24.28 ng/ml

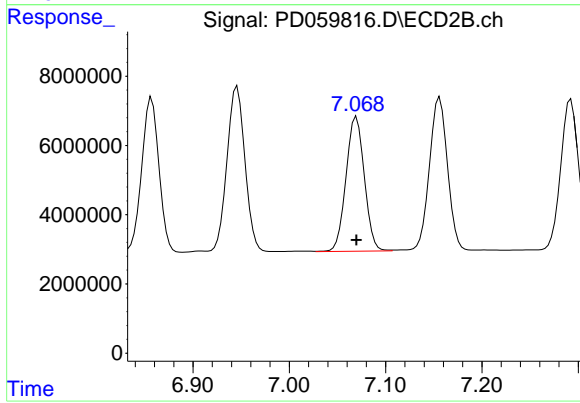
Instrument :
ECD_D
ClientSampled :



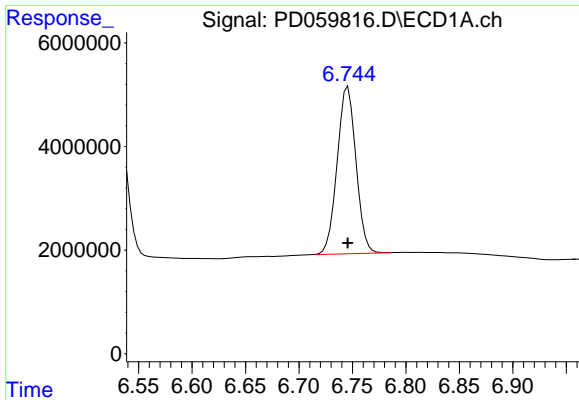
#17 4,4'-DDT
R.T.: 7.156 min
Delta R.T.: 0.000 min
Response: 58000241
Conc: 24.42 ng/ml



#18 Endrin aldehyde
R.T.: 6.532 min
Delta R.T.: 0.000 min
Response: 35597046
Conc: 25.00 ng/ml



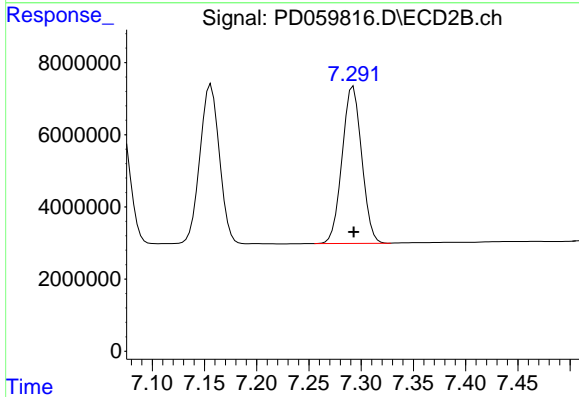
#18 Endrin aldehyde
R.T.: 7.070 min
Delta R.T.: 0.000 min
Response: 51291852
Conc: 25.01 ng/ml



#19 Endosulfan Sulfate

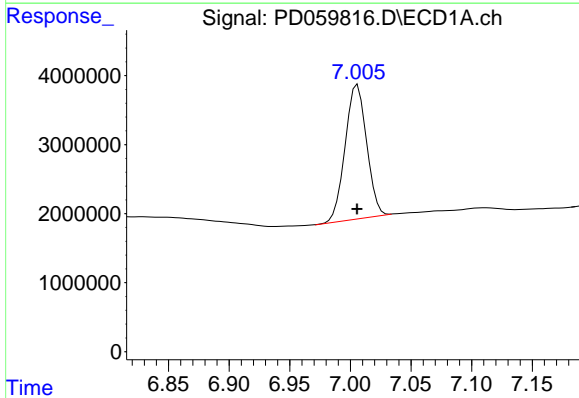
R.T.: 6.746 min
 Delta R.T.: 0.000 min
 Response: 39430543
 Conc: 24.84 ng/ml

Instrument :
 ECD_D
 ClientSampleId :



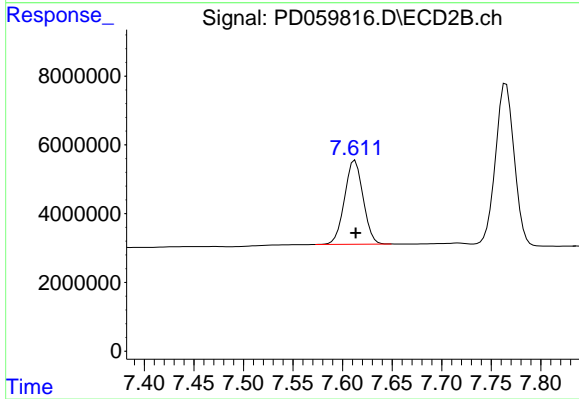
#19 Endosulfan Sulfate

R.T.: 7.292 min
 Delta R.T.: 0.000 min
 Response: 56668702
 Conc: 25.03 ng/ml



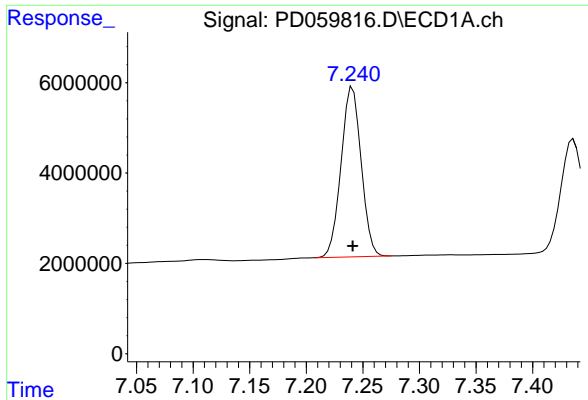
#20 Methoxychlor

R.T.: 7.006 min
 Delta R.T.: 0.000 min
 Response: 23930025
 Conc: 25.08 ng/ml



#20 Methoxychlor

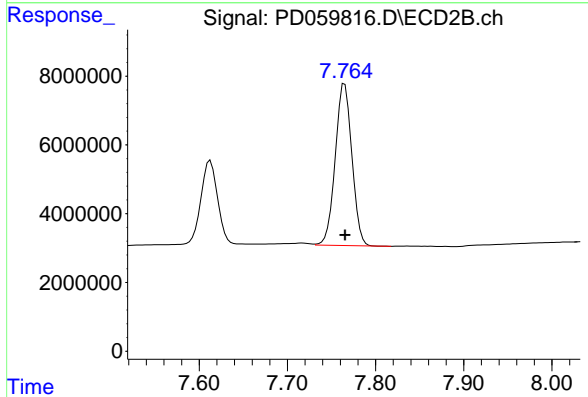
R.T.: 7.613 min
 Delta R.T.: 0.000 min
 Response: 31818189
 Conc: 25.40 ng/ml



#21 Endrin ketone

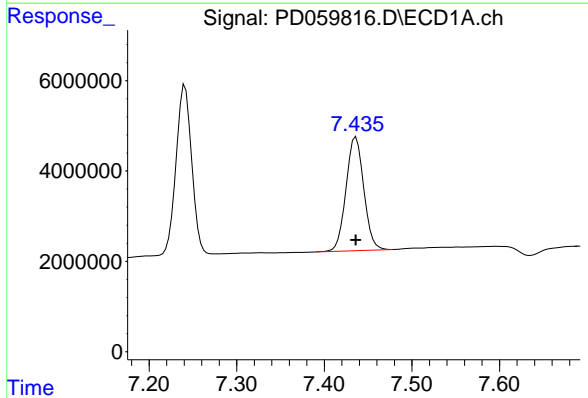
R.T.: 7.241 min
 Delta R.T.: 0.000 min
 Response: 46485366
 Conc: 24.84 ng/ml

Instrument :
 ECD_D
 ClientSampleId :



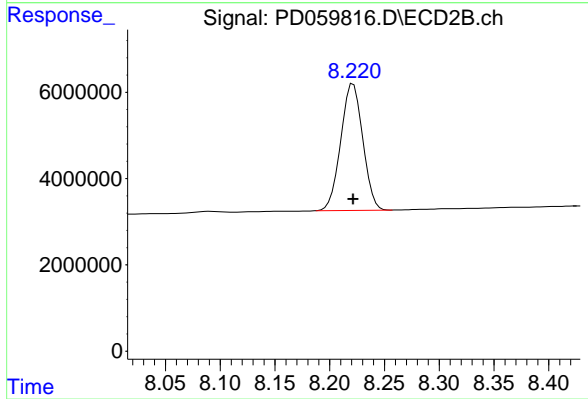
#21 Endrin ketone

R.T.: 7.765 min
 Delta R.T.: 0.000 min
 Response: 61806395
 Conc: 25.17 ng/ml



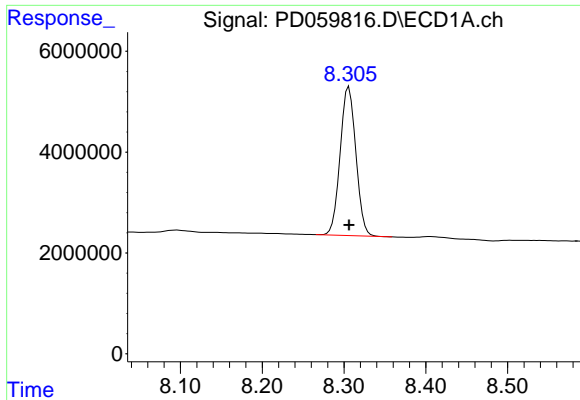
#22 Mirex

R.T.: 7.436 min
 Delta R.T.: 0.000 min
 Response: 35474351
 Conc: 26.03 ng/ml



#22 Mirex

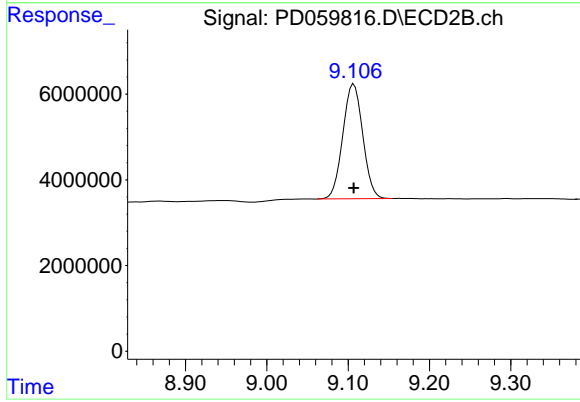
R.T.: 8.222 min
 Delta R.T.: 0.000 min
 Response: 41050217
 Conc: 25.58 ng/ml



#28 Decachlorobiphenyl

R.T.: 8.306 min
Delta R.T.: 0.000 min
Response: 39249891
Conc: 25.62 ng/ml

Instrument :
ECD_D
ClientSampleId :



#28 Decachlorobiphenyl

R.T.: 9.107 min
Delta R.T.: 0.000 min
Response: 45527102
Conc: 25.95 ng/ml