

Data Path : Z:\pestpcbsrv\HPCHEM1\ECD_D\Data\PD101921\
 Data File : PD066396.D
 Signal(s) : Signal #1: ECD1A.ch Signal #2: ECD2B.ch
 Acq On : 19 Oct 2021 15:55
 Operator : AJ\MA
 Sample : PIBLK115
 Misc :
 ALS Vial : 2 Sample Multiplier: 1

Instrument :
 ECD_D
 ClientSampled :

Integration File signal 1: autoint1.e
 Integration File signal 2: autoint2.e
 Quant Time: Oct 20 06:21:01 2021
 Quant Method : Z:\pestpcbsrv\HPCHEM1\ECD_D\Method\PD101621CLP.M
 Quant Title : GC Extractables
 QLast Update : Tue Oct 19 10:18:55 2021
 Response via : Initial Calibration
 Integrator: ChemStation

Volume Inj. : 1 µl
 Signal #1 Phase : ZB-MR2 Signal #2 Phase: ZB-MR1
 Signal #1 Info : 30M x 0.32mm x0.2 Signal #2 Info : 30M x 0.32mm x 0.50µm

	Compound	RT#1	RT#2	Resp#1	Resp#2	ng/ml	ng/ml

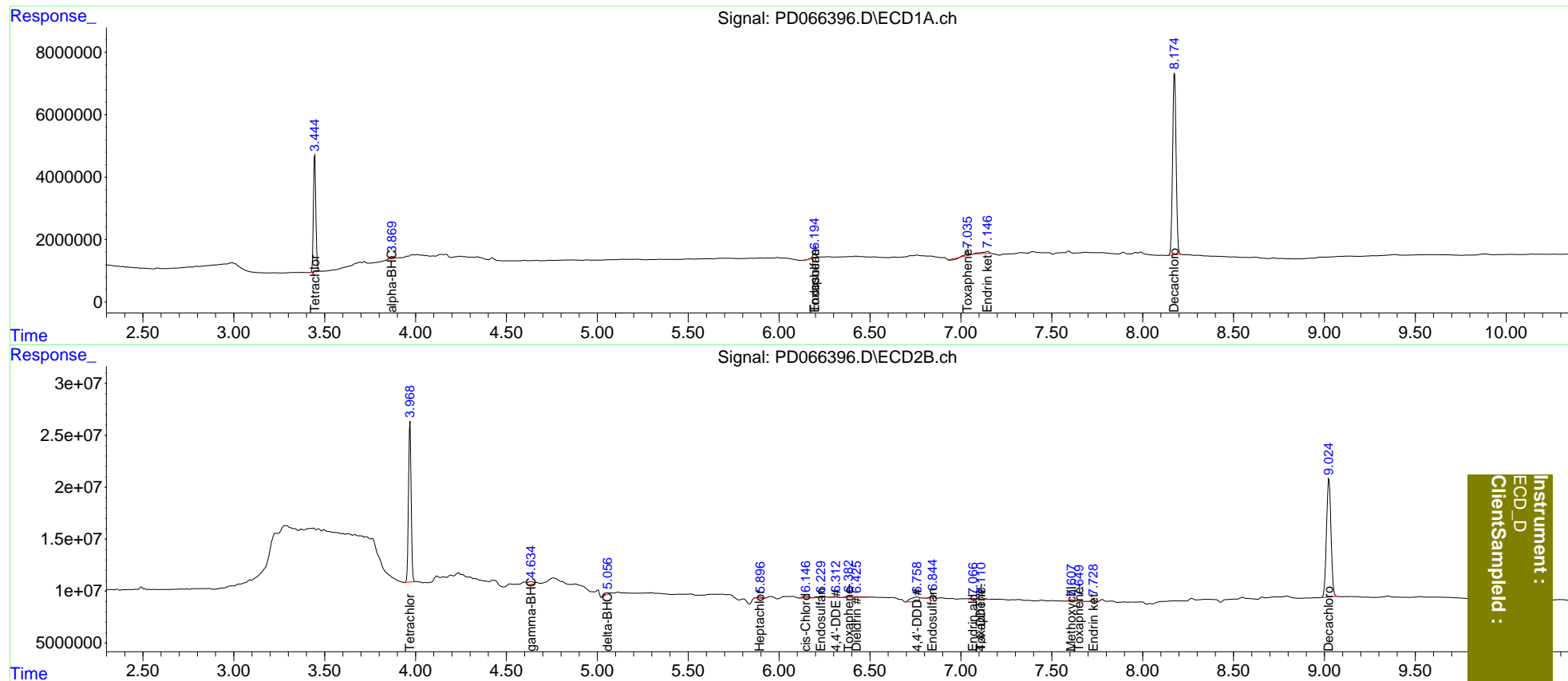
System Monitoring Compounds							
1)	SA Tetrachlo...	3.446	3.970	34921680	157.0E6	17.102	17.613
2)	SA Decachlor...	8.175	9.025	77522174	197.2E6	57.019	41.517 #
Target Compounds							
2)	A alpha-BHC	3.870	0.000	1205707	0	0.386	N.D. #
3)	MA gamma-BHC...	0.000	4.635	0	5864657	N.D.	0.531
7)	B delta-BHC	0.000	5.058	0	2693259	N.D.	0.278
8)	B Heptachlo...	0.000	5.895f	0	1909144	N.D.	0.238
9)	A Endosulfan I	0.000	6.230	0	2283658	N.D.	0.271
11)	B cis-Chlor...	0.000	6.147	0	3967080	N.D.	0.448
12)	B 4,4'-DDE	0.000	6.312	0	2004740	N.D.	0.252
13)	MA Dieldrin	0.000	6.426	0	1716363	N.D.	0.203
15)	B Endosulfa...	6.196f	6.845f	1912830	4937465	0.852	0.693
16)	A 4,4'-DDD	0.000	6.760f	0	13974389	N.D.	2.094
17)	MA 4,4'-DDT	0.000	7.112	0	3793447	N.D.	0.578
18)	B Endrin al...	0.000	7.067f	0	1511219	N.D.	0.285
20)	A Methoxychlor	0.000	7.609f	0	1883425	N.D.	0.580
21)	B Endrin ke...	7.147	7.729	1961941	2455015	0.850	0.342 #
22)	Toxaphene-1	0.000	6.383	0	3200956	N.D.	86.867
23)	Toxaphene-2	6.196	0.000	1912830	0	112.642	N.D. #
24)	Toxaphene-3	0.000	7.112	0	3793447	N.D.	34.982
26)	Toxaphene-5	7.037	7.650	816323	1295500	19.612	16.341

(f)=RT Delta > 1/2 Window (#)=Amounts differ by > 25% (m)=manual int.

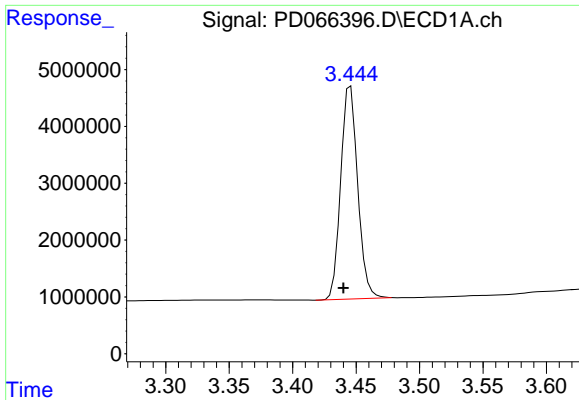
Data Path : Z:\pestpcbsrv\HPCHEM1\ECD_D\Data\PD101921\
 Data File : PD066396.D
 Signal(s) : Signal #1: ECD1A.ch Signal #2: ECD2B.ch
 Acq On : 19 Oct 2021 15:55
 Operator : AJ\MA
 Sample : PIBLK115
 Misc :
 ALS Vial : 2 Sample Multiplier: 1

Integration File signal 1: autoint1.e
 Integration File signal 2: autoint2.e
 Quant Time: Oct 20 06:21:01 2021
 Quant Method : Z:\pestpcbsrv\HPCHEM1\ECD_D\Method\PD101621CLP.M
 Quant Title : GC Extractables
 QLast Update : Tue Oct 19 10:18:55 2021
 Response via : Initial Calibration
 Integrator: ChemStation

Volume Inj. : 1 µl
 Signal #1 Phase : ZB-MR2 Signal #2 Phase: ZB-MR1
 Signal #1 Info : 30M x 0.32mm x0.2 Signal #2 Info : 30M x 0.32mm x 0.50µm

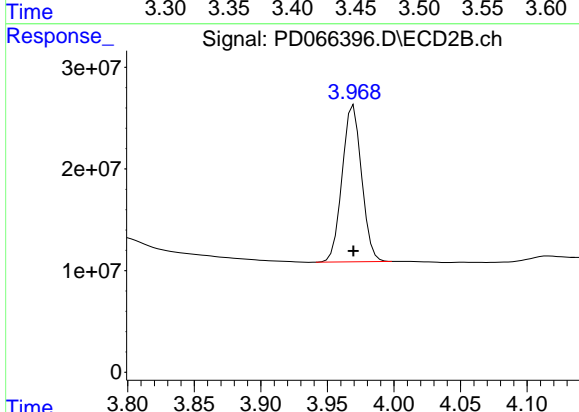


Instrument :
 ECD_D
 ClientSampleId :

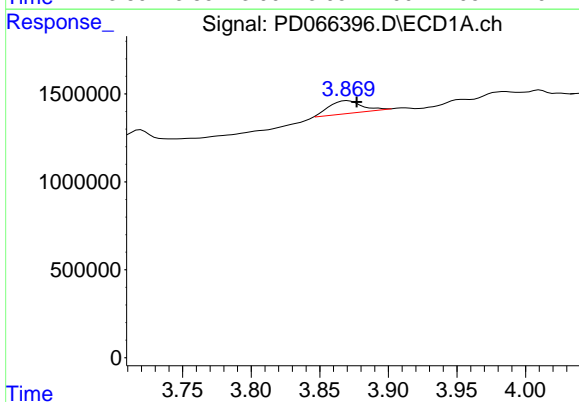


#1 Tetrachloro-m-xylene
 R.T.: 3.446 min
 Delta R.T.: 0.006 min
 Response: 34921680
 Conc: 17.10 ng/ml

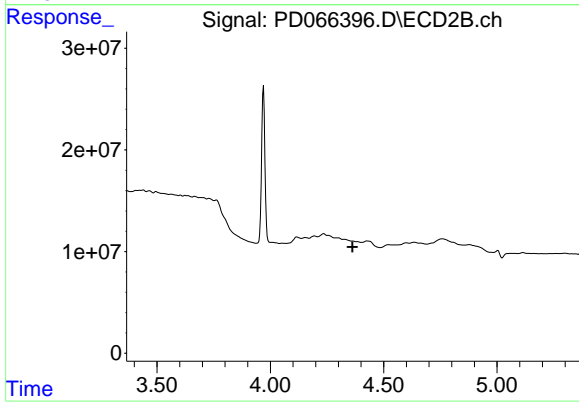
Instrument :
 ECD_D
 ClientSampleId :



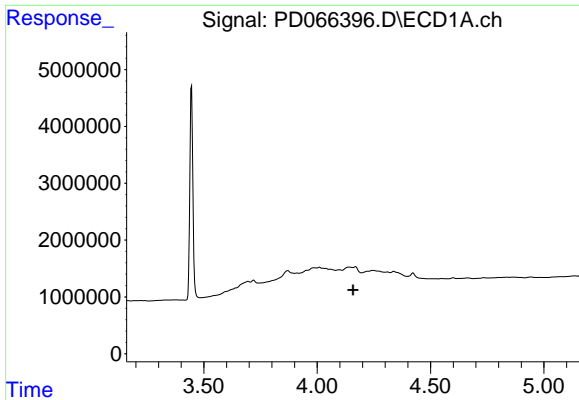
#1 Tetrachloro-m-xylene
 R.T.: 3.970 min
 Delta R.T.: 0.000 min
 Response: 156956476
 Conc: 17.61 ng/ml



#2 alpha-BHC
 R.T.: 3.870 min
 Delta R.T.: -0.007 min
 Response: 1205707
 Conc: 0.39 ng/ml

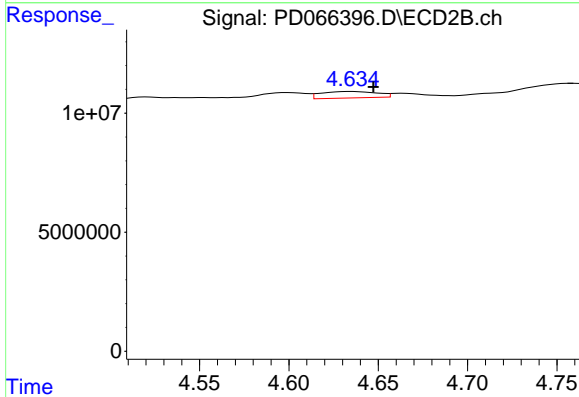


#2 alpha-BHC
 R.T.: 0.000 min
 Exp R.T. : 4.363 min
 Response: 0
 Conc: N.D.

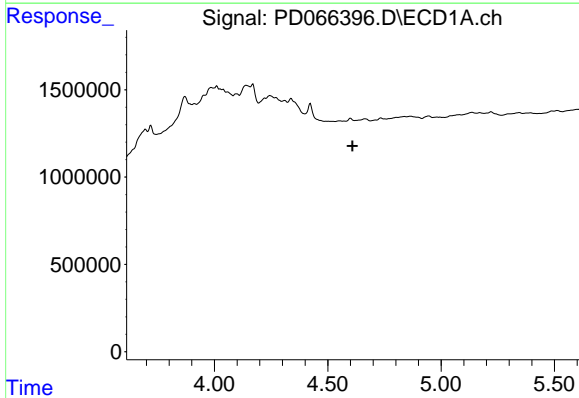


#3 gamma-BHC (Lindane)
 R.T.: 0.000 min
 Exp R.T.: 4.159 min
 Response: 0
 Conc: N.D.

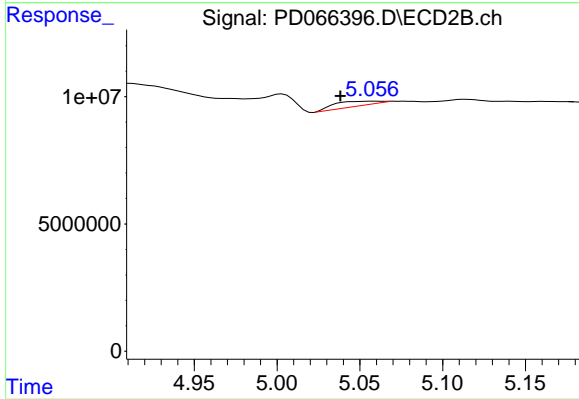
Instrument :
 ECD_D
 ClientSampleId :



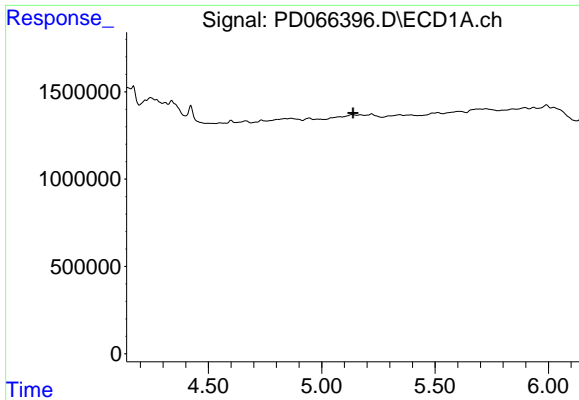
#3 gamma-BHC (Lindane)
 R.T.: 4.635 min
 Delta R.T.: -0.012 min
 Response: 5864657
 Conc: 0.53 ng/ml



#7 delta-BHC
 R.T.: 0.000 min
 Exp R.T.: 4.610 min
 Response: 0
 Conc: N.D.

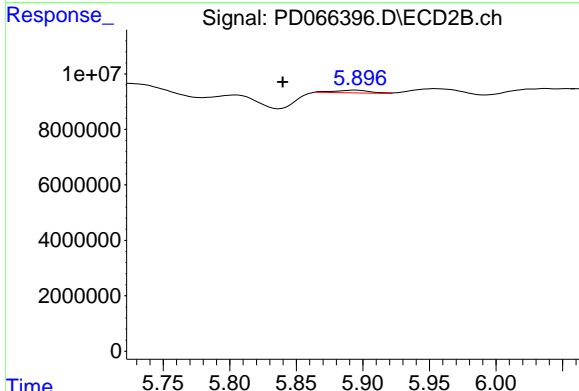


#7 delta-BHC
 R.T.: 5.058 min
 Delta R.T.: 0.019 min
 Response: 2693259
 Conc: 0.28 ng/ml

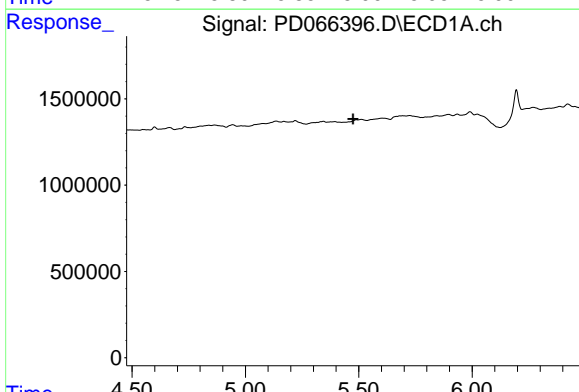


#8 Heptachlor epoxide
 R.T.: 0.000 min
 Exp R.T. : 5.139 min
 Response: 0
 Conc: N.D.

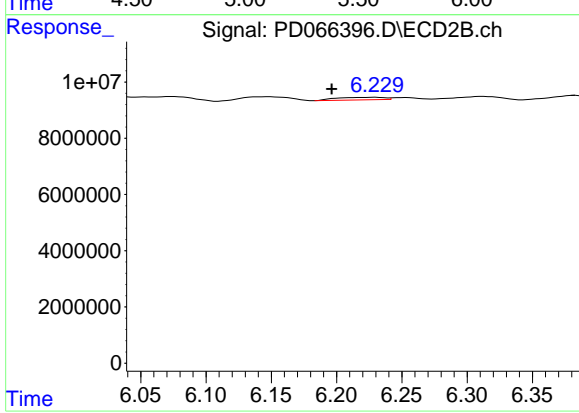
Instrument :
 ECD_D
 ClientSampleId :



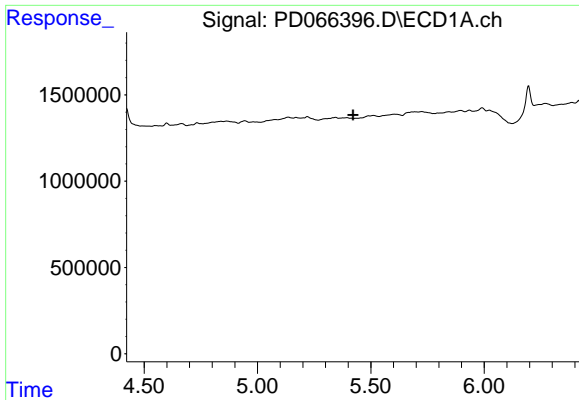
#8 Heptachlor epoxide
 R.T.: 5.895 min
 Delta R.T.: 0.055 min
 Response: 1909144
 Conc: 0.24 ng/ml



#9 Endosulfan I
 R.T.: 0.000 min
 Exp R.T. : 5.476 min
 Response: 0
 Conc: N.D.



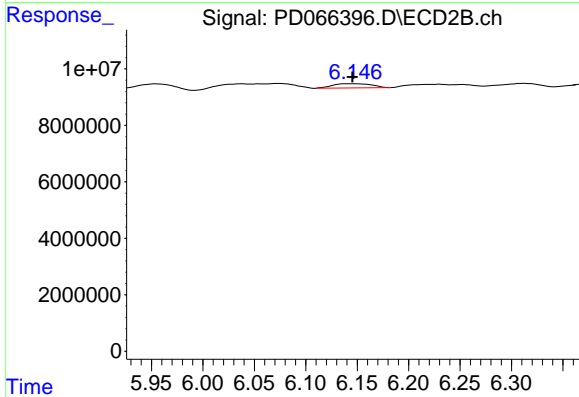
#9 Endosulfan I
 R.T.: 6.230 min
 Delta R.T.: 0.034 min
 Response: 2283658
 Conc: 0.27 ng/ml



#11 cis-Chlordane

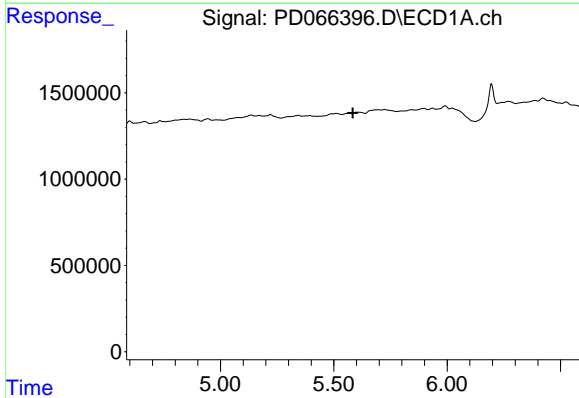
R.T.: 0.000 min
 Exp R.T. : 5.421 min
 Response: 0
 Conc: N.D.

Instrument :
 ECD_D
 ClientSampleId :



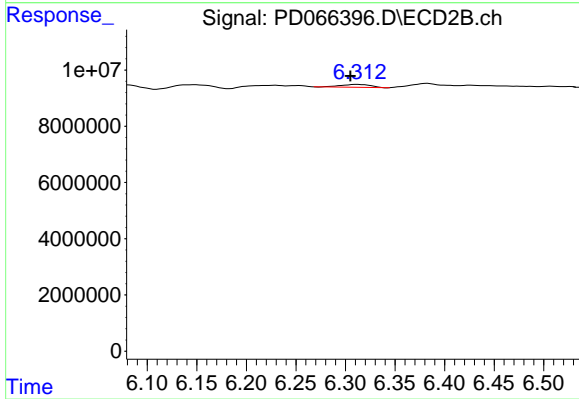
#11 cis-Chlordane

R.T.: 6.147 min
 Delta R.T.: 0.002 min
 Response: 3967080
 Conc: 0.45 ng/ml



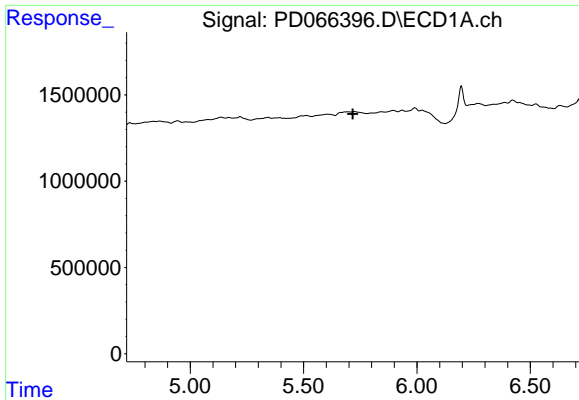
#12 4,4'-DDE

R.T.: 0.000 min
 Exp R.T. : 5.584 min
 Response: 0
 Conc: N.D.



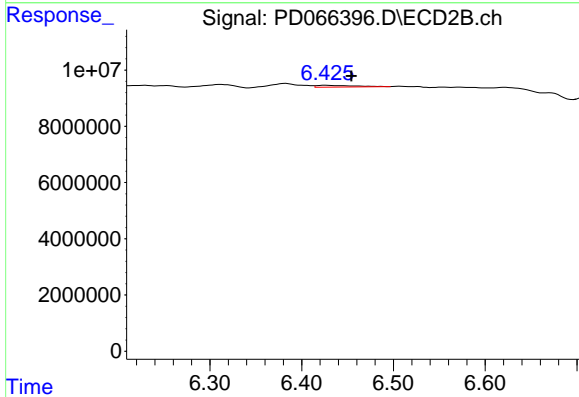
#12 4,4'-DDE

R.T.: 6.312 min
 Delta R.T.: 0.007 min
 Response: 2004740
 Conc: 0.25 ng/ml

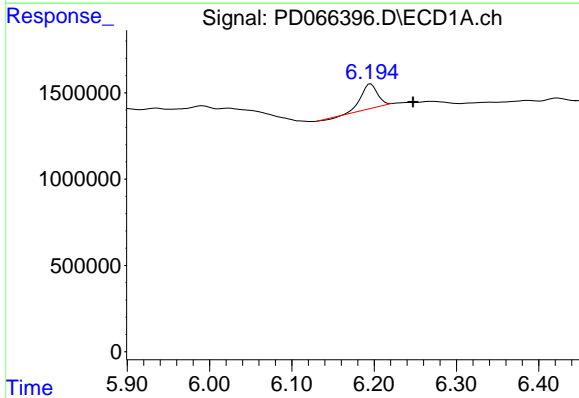


#13 Dieldrin
 R.T.: 0.000 min
 Exp R.T.: 5.718 min
 Response: 0
 Conc: N.D.

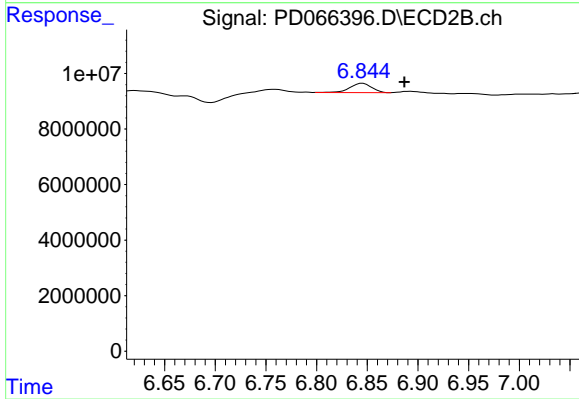
Instrument :
 ECD_D
 ClientSampled :



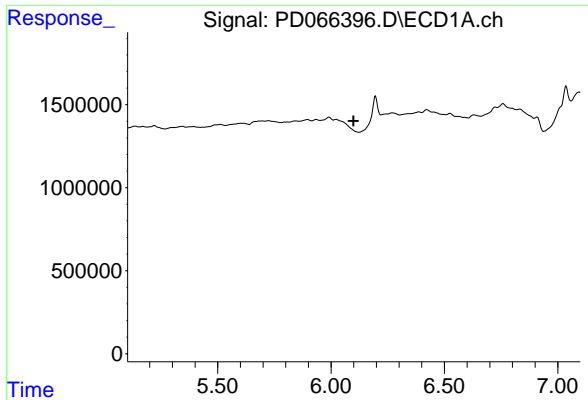
#13 Dieldrin
 R.T.: 6.426 min
 Delta R.T.: -0.028 min
 Response: 1716363
 Conc: 0.20 ng/ml



#15 Endosulfan II
 R.T.: 6.196 min
 Delta R.T.: -0.051 min
 Response: 1912830
 Conc: 0.85 ng/ml

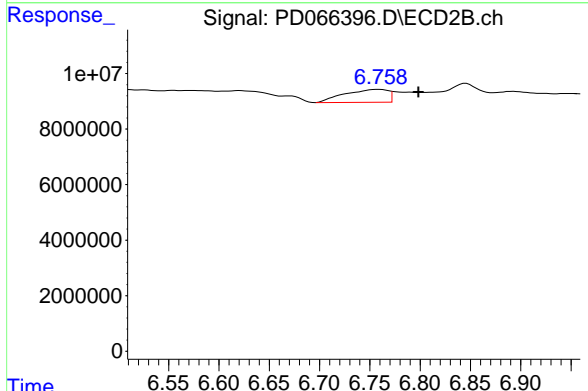


#15 Endosulfan II
 R.T.: 6.845 min
 Delta R.T.: -0.041 min
 Response: 4937465
 Conc: 0.69 ng/ml

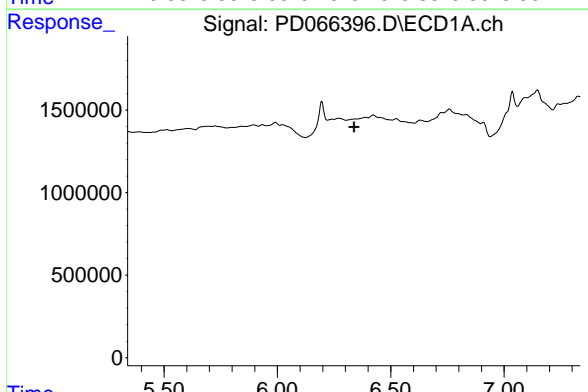


#16 4,4'-DDD
 R.T.: 0.000 min
 Exp R.T.: 6.099 min
 Response: 0
 Conc: N.D.

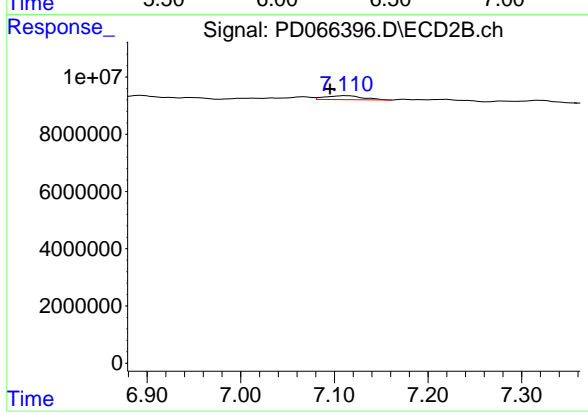
Instrument :
 ECD_D
 ClientSampled :



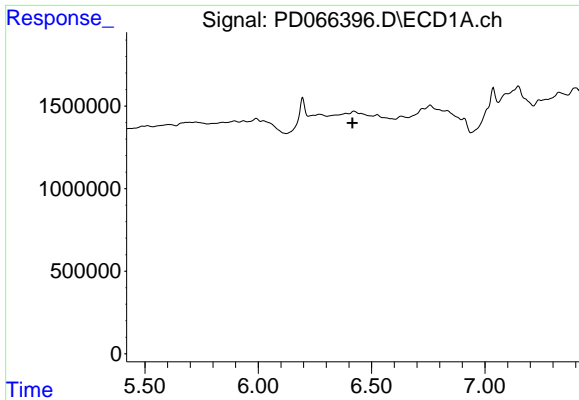
#16 4,4'-DDD
 R.T.: 6.760 min
 Delta R.T.: -0.039 min
 Response: 13974389
 Conc: 2.09 ng/ml



#17 4,4'-DDT
 R.T.: 0.000 min
 Exp R.T.: 6.338 min
 Response: 0
 Conc: N.D.



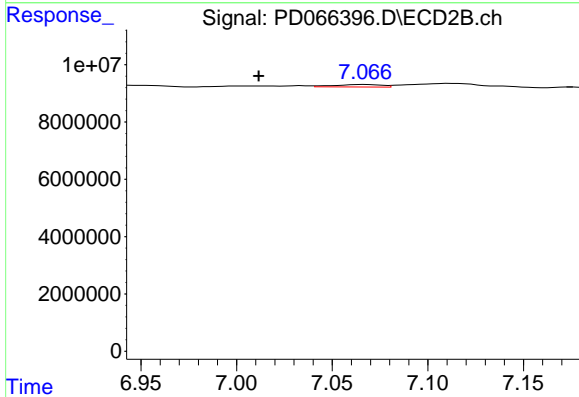
#17 4,4'-DDT
 R.T.: 7.112 min
 Delta R.T.: 0.016 min
 Response: 3793447
 Conc: 0.58 ng/ml



#18 Endrin aldehyde

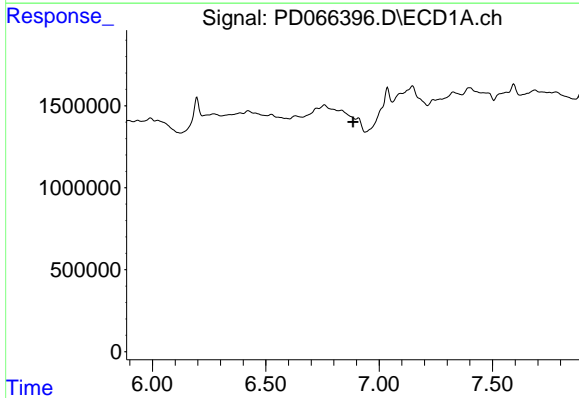
R.T.: 0.000 min
 Exp R.T. : 6.416 min
 Response: 0
 Conc: N.D.

Instrument :
 ECD_D
 ClientSampleId :



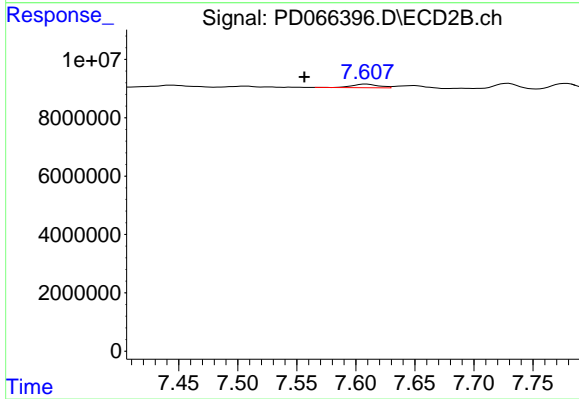
#18 Endrin aldehyde

R.T.: 7.067 min
 Delta R.T.: 0.055 min
 Response: 1511219
 Conc: 0.29 ng/ml



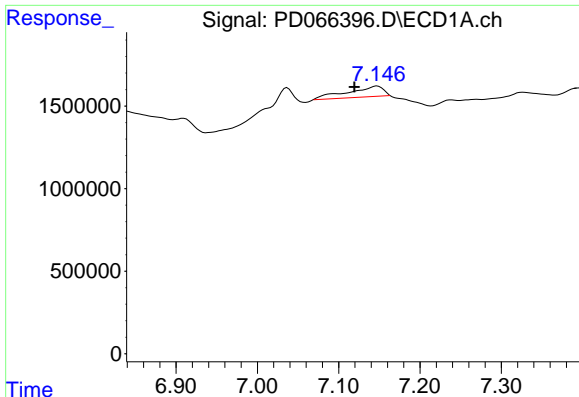
#20 Methoxychlor

R.T.: 0.000 min
 Exp R.T. : 6.886 min
 Response: 0
 Conc: N.D.



#20 Methoxychlor

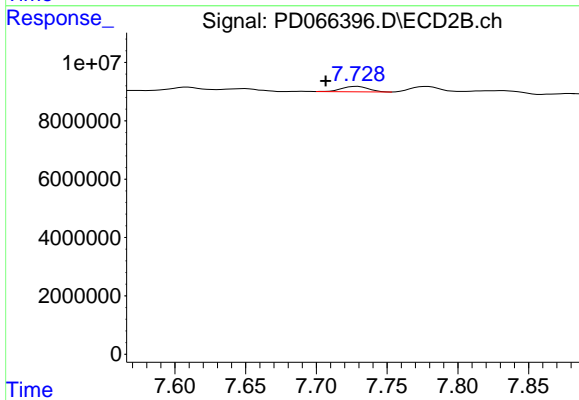
R.T.: 7.609 min
 Delta R.T.: 0.053 min
 Response: 1883425
 Conc: 0.58 ng/ml



#21 Endrin ketone

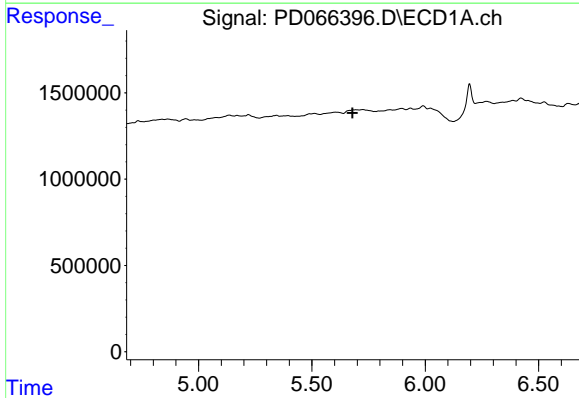
R.T.: 7.147 min
 Delta R.T.: 0.028 min
 Response: 1961941
 Conc: 0.85 ng/ml

Instrument :
 ECD_D
 ClientSampleId :



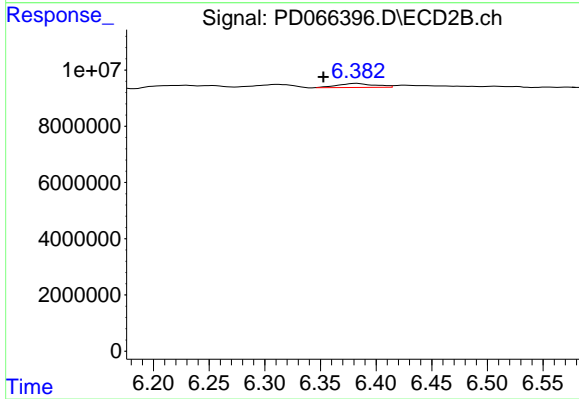
#21 Endrin ketone

R.T.: 7.729 min
 Delta R.T.: 0.022 min
 Response: 2455015
 Conc: 0.34 ng/ml



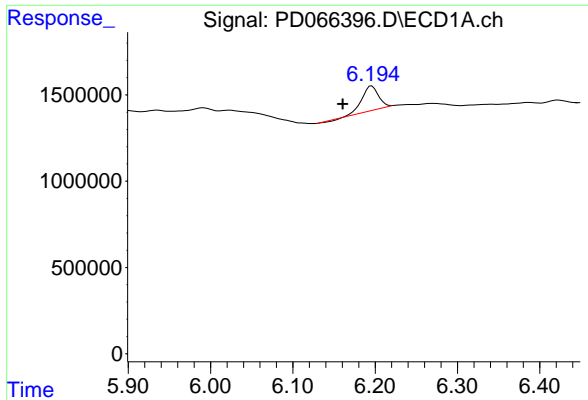
#22 Toxaphene-1

R.T.: 0.000 min
 Exp R.T. : 5.679 min
 Response: 0
 Conc: N.D.



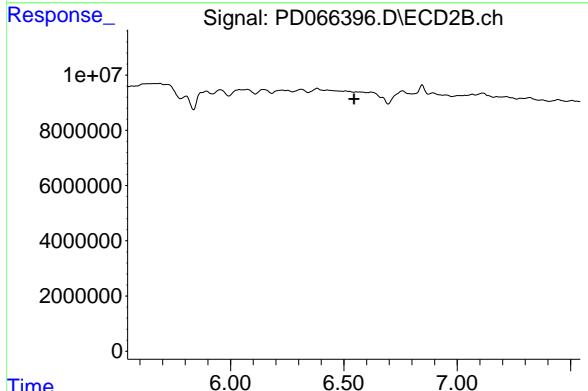
#22 Toxaphene-1

R.T.: 6.383 min
 Delta R.T.: 0.030 min
 Response: 3200956
 Conc: 86.87 ng/ml

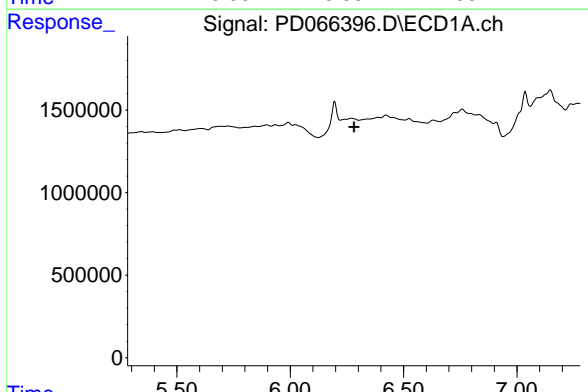


#23 Toxaphene-2
 R.T.: 6.196 min
 Delta R.T.: 0.035 min
 Response: 1912830
 Conc: 112.64 ng/ml

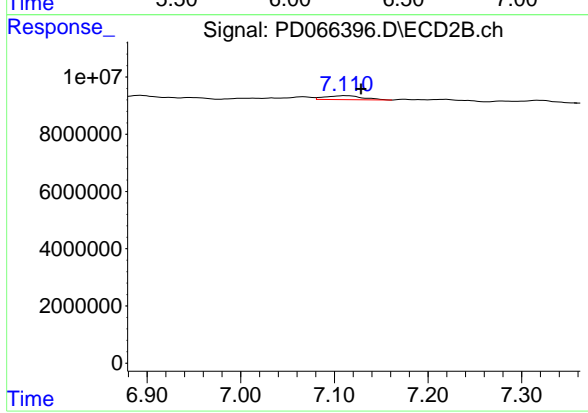
Instrument :
 ECD_D
 ClientSampleId :



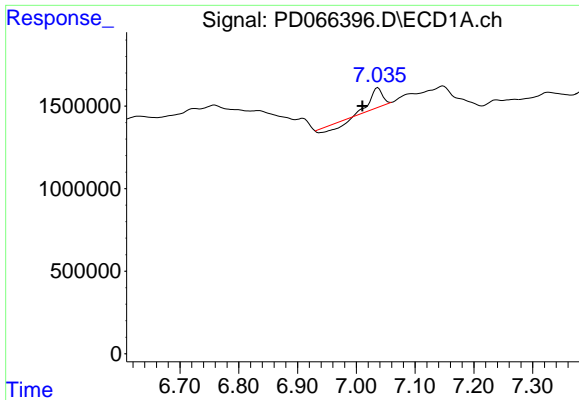
#23 Toxaphene-2
 R.T.: 0.000 min
 Exp R.T. : 6.545 min
 Response: 0
 Conc: N.D.



#24 Toxaphene-3
 R.T.: 0.000 min
 Exp R.T. : 6.282 min
 Response: 0
 Conc: N.D.



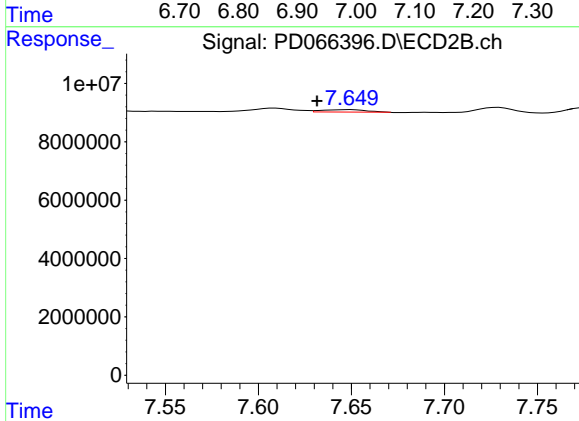
#24 Toxaphene-3
 R.T.: 7.112 min
 Delta R.T.: -0.017 min
 Response: 3793447
 Conc: 34.98 ng/ml



#26 Toxaphene-5

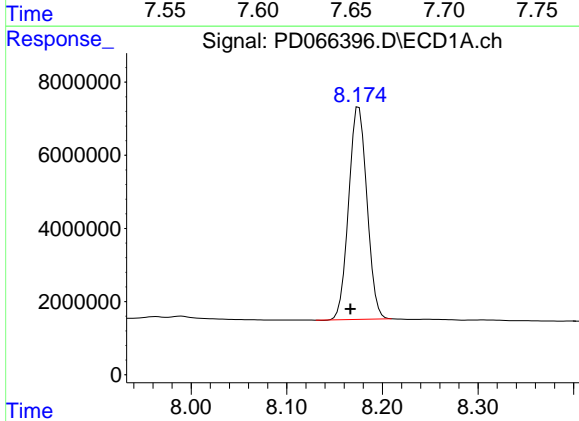
R.T.: 7.037 min
 Delta R.T.: 0.027 min
 Response: 816323
 Conc: 19.61 ng/ml

Instrument :
 ECD_D
 ClientSampleId :



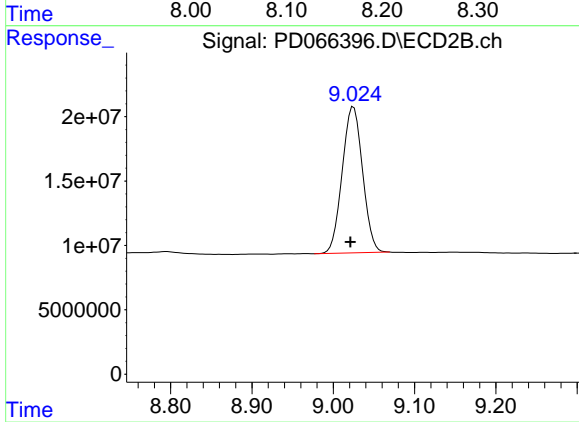
#26 Toxaphene-5

R.T.: 7.650 min
 Delta R.T.: 0.019 min
 Response: 1295500
 Conc: 16.34 ng/ml



#27 Decachlorobiphenyl

R.T.: 8.175 min
 Delta R.T.: 0.009 min
 Response: 77522174
 Conc: 57.02 ng/ml



#27 Decachlorobiphenyl

R.T.: 9.025 min
 Delta R.T.: 0.004 min
 Response: 197161046
 Conc: 41.52 ng/ml