

Data Path : Z:\pestpcbsrv\HPCHEM1\ECD_D\Data\PD101921\
 Data File : PD066408.D
 Signal(s) : Signal #1: ECD1A.ch Signal #2: ECD2B.ch
 Acq On : 19 Oct 2021 18:47
 Operator : AJ\MA
 Sample : M4196-21
 Misc :
 ALS Vial : 26 Sample Multiplier: 1

Instrument :
 ECD_D
 ClientSampleId :

Integration File signal 1: autoint1.e
 Integration File signal 2: autoint2.e
 Quant Time: Oct 20 06:25:06 2021
 Quant Method : Z:\pestpcbsrv\HPCHEM1\ECD_D\Method\PD101621CLP.M
 Quant Title : GC Extractables
 QLast Update : Tue Oct 19 10:18:55 2021
 Response via : Initial Calibration
 Integrator: ChemStation

Volume Inj. : 1 µl
 Signal #1 Phase : ZB-MR2 Signal #2 Phase: ZB-MR1
 Signal #1 Info : 30M x 0.32mm x0.2 Signal #2 Info : 30M x 0.32mm x 0.50µm

	Compound	RT#1	RT#2	Resp#1	Resp#2	ng/ml	ng/ml

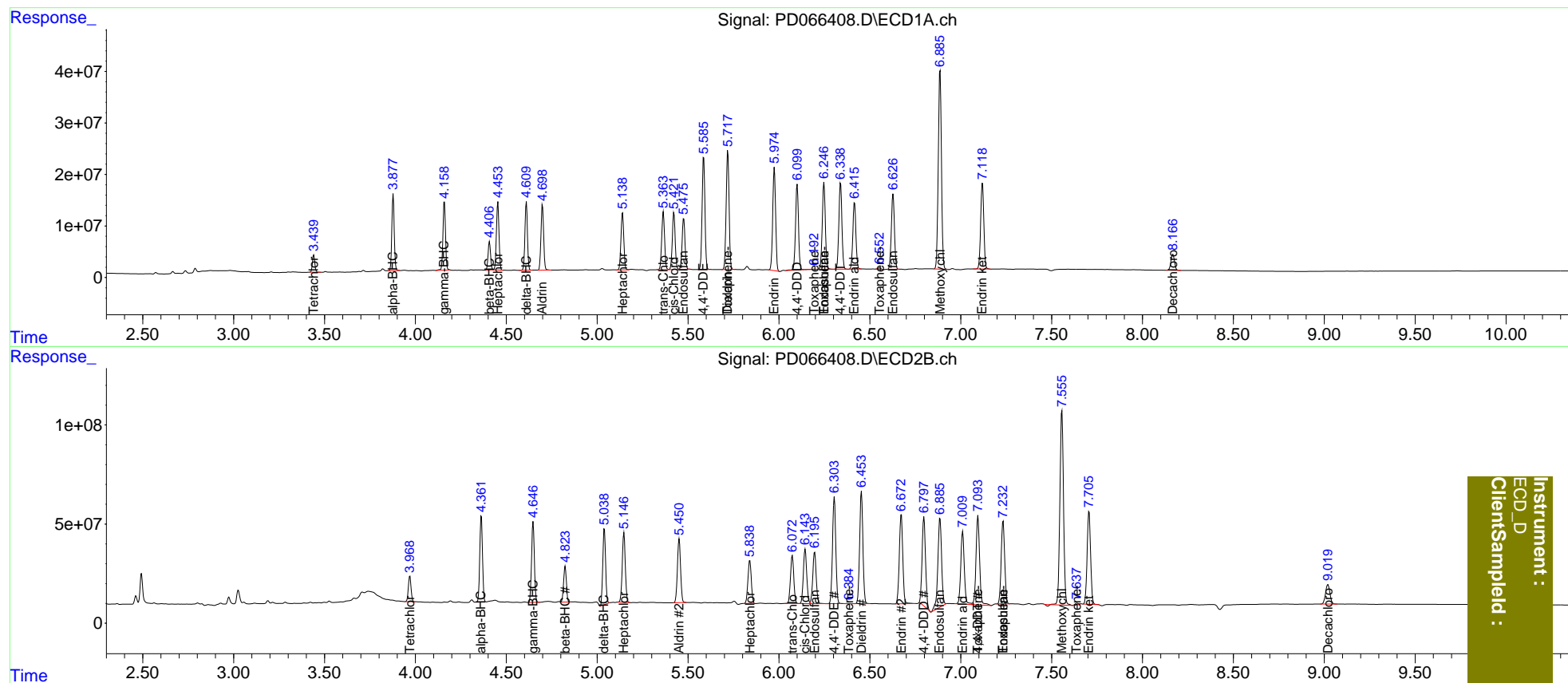
System Monitoring Compounds							
1)	SA Tetrachlo...	3.441	3.970	30402840	134.4E6	14.889	15.084
27)	SA Decachlor...	8.167	9.020	42611890	166.0E6	31.342	34.963
Target Compounds							
2)	A alpha-BHC	3.878	4.363	134.5E6	452.8E6	43.113	38.976
3)	MA gamma-BHC...	4.160	4.648	129.3E6	431.7E6	41.885	39.114
4)	MA Heptachlor	4.454	5.147	129.6E6	405.5E6	44.273	40.073
5)	MB Aldrin	4.699	5.451	129.0E6	388.4E6	41.959	38.519
6)	B beta-BHC	4.408	4.824	52096723	192.5E6	39.125	36.969
7)	B delta-BHC	4.611	5.040	126.4E6	410.5E6	43.828	42.419
8)	Heptachlo...	5.140	5.840	119.5E6	277.2E6	44.146	34.524
9)	A Endosulfan I	5.476	6.197	109.1E6	337.5E6	43.174	40.026
10)	B trans-Chl...	5.364	6.074	121.9E6	304.0E6	44.473	33.630
11)	B cis-Chlor...	5.422	6.144	118.8E6	352.8E6	44.310	39.794
12)	B 4,4'-DDE	5.586	6.305	237.2E6	671.5E6	94.710	84.501
13)	MA Dieldrin	5.719	6.454	255.8E6	702.9E6	95.249	83.156
14)	MA Endrin	5.975	6.673	223.3E6	598.3E6	93.912	113.039
15)	B Endosulfa...	6.248	6.886	196.0E6	639.1E6	87.273	89.686
16)	A 4,4'-DDD	6.101	6.798	187.3E6	589.1E6	90.221	88.288
17)	MA 4,4'-DDT	6.339	7.095	196.3E6	616.4E6	98.672	93.991
18)	B Endrin al...	6.416	7.011	150.3E6	490.2E6	95.966	92.467
19)	B Endosulfa...	6.628	7.233	171.7E6	554.3E6	86.552	84.055
20)	A Methoxychlor	6.886	7.557	465.5E6	1353.3E6	448.897	416.698
21)	B Endrin ke...	7.120	7.706	203.2E6	620.7E6	87.980	86.536
22)	Toxaphene-1	5.719	6.385	255.8E6	269500	15268.672	7.314 #
23)	Toxaphene-2	6.193	0.000	337332	0	19.865	N.D. #
24)	Toxaphene-3	6.248	7.095	196.0E6	616.4E6	4928.437	5684.490
25)	Toxaphene-4	6.553	7.233	3457014	554.3E6	84.671	5087.039 #
26)	Toxaphene-5	7.040	7.639	-63274	10915412	N.D.	137.680

(f)=RT Delta > 1/2 Window (#)=Amounts differ by > 25% (m)=manual int.

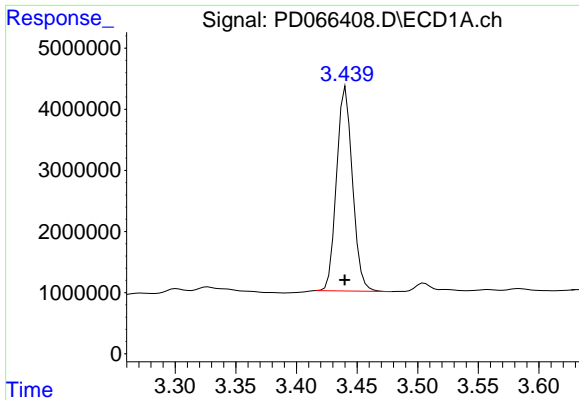
Data Path : Z:\pestpcbsrv\HPCHEM1\ECD_D\Data\PD101921\
 Data File : PD066408.D
 Signal(s) : Signal #1: ECD1A.ch Signal #2: ECD2B.ch
 Acq On : 19 Oct 2021 18:47
 Operator : AJ\MA
 Sample : M4196-21
 Misc :
 ALS Vial : 26 Sample Multiplier: 1

Integration File signal 1: autoint1.e
 Integration File signal 2: autoint2.e
 Quant Time: Oct 20 06:25:06 2021
 Quant Method : Z:\pestpcbsrv\HPCHEM1\ECD_D\Method\PD101621CLP.M
 Quant Title : GC Extractables
 QLast Update : Tue Oct 19 10:18:55 2021
 Response via : Initial Calibration
 Integrator: ChemStation

Volume Inj. : 1 µl
 Signal #1 Phase : ZB-MR2 Signal #2 Phase: ZB-MR1
 Signal #1 Info : 30M x 0.32mm x0.2 Signal #2 Info : 30M x 0.32mm x 0.50µm

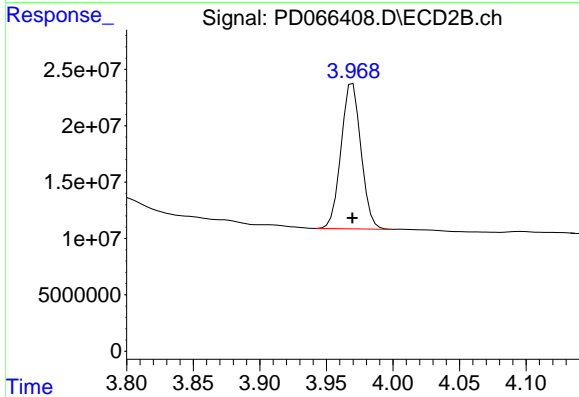


Instrument :
 ECD_D
 ClientSampleId :

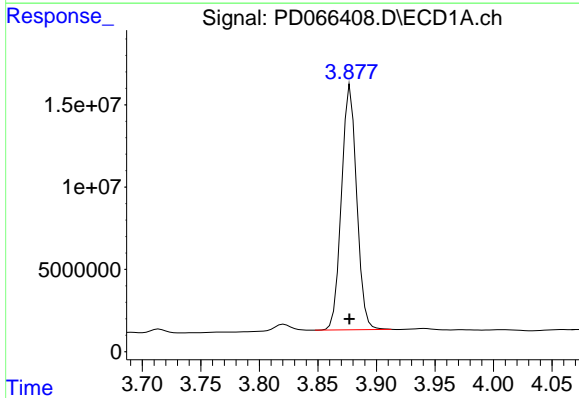


#1 Tetrachloro-m-xylene
 R.T.: 3.441 min
 Delta R.T.: 0.000 min
 Response: 30402840
 Conc: 14.89 ng/ml

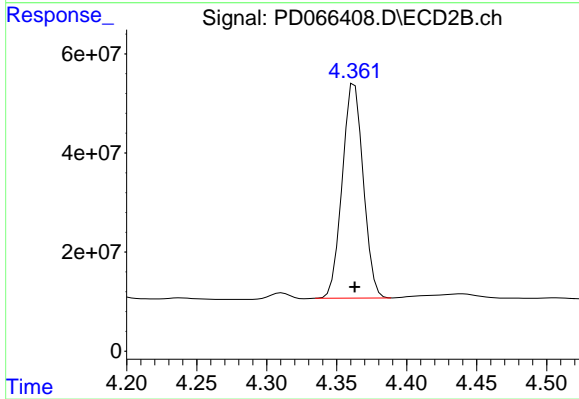
Instrument :
 ECD_D
 ClientSampled :



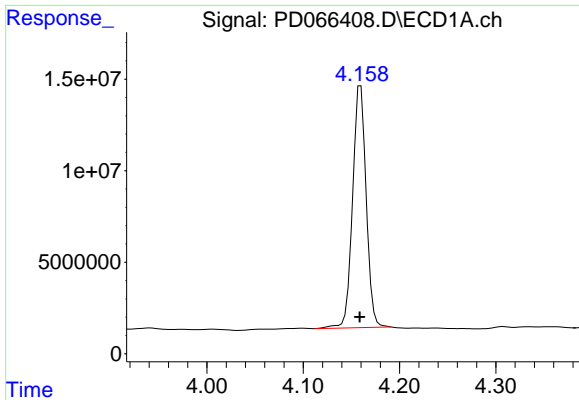
#1 Tetrachloro-m-xylene
 R.T.: 3.970 min
 Delta R.T.: 0.000 min
 Response: 134420309
 Conc: 15.08 ng/ml



#2 alpha-BHC
 R.T.: 3.878 min
 Delta R.T.: 0.001 min
 Response: 134507928
 Conc: 43.11 ng/ml



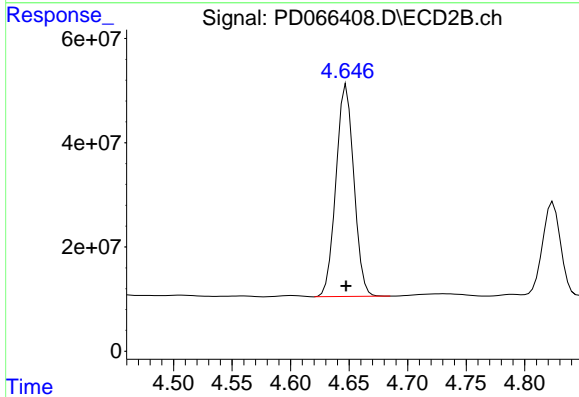
#2 alpha-BHC
 R.T.: 4.363 min
 Delta R.T.: 0.000 min
 Response: 452846233
 Conc: 38.98 ng/ml



#3 gamma-BHC (Lindane)

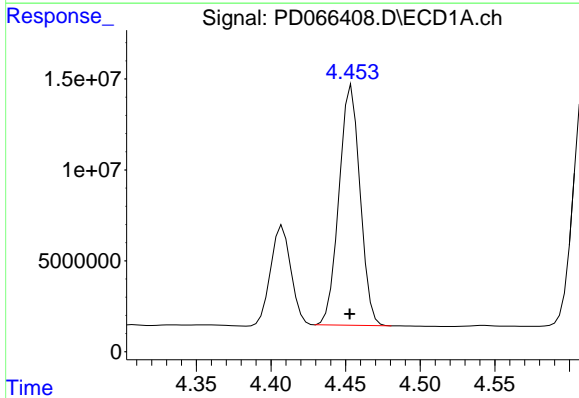
R.T.: 4.160 min
Delta R.T.: 0.000 min
Response: 129295229
Conc: 41.89 ng/ml

Instrument :
ECD_D
ClientSampled :



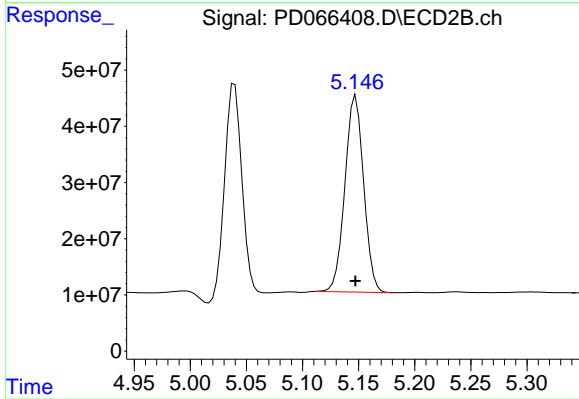
#3 gamma-BHC (Lindane)

R.T.: 4.648 min
Delta R.T.: 0.000 min
Response: 431726739
Conc: 39.11 ng/ml



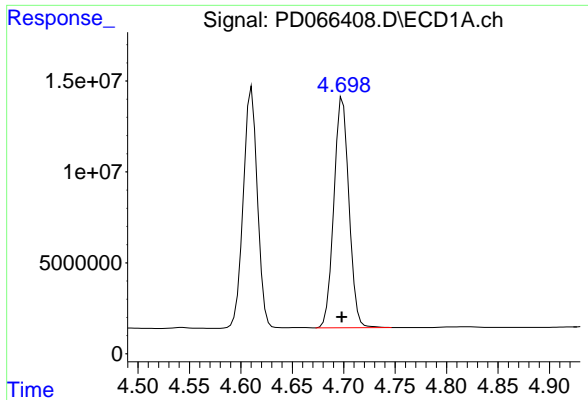
#4 Heptachlor

R.T.: 4.454 min
Delta R.T.: 0.001 min
Response: 129606235
Conc: 44.27 ng/ml



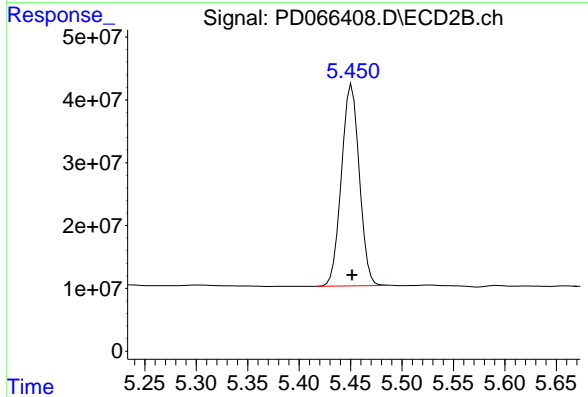
#4 Heptachlor

R.T.: 5.147 min
Delta R.T.: 0.000 min
Response: 405502416
Conc: 40.07 ng/ml

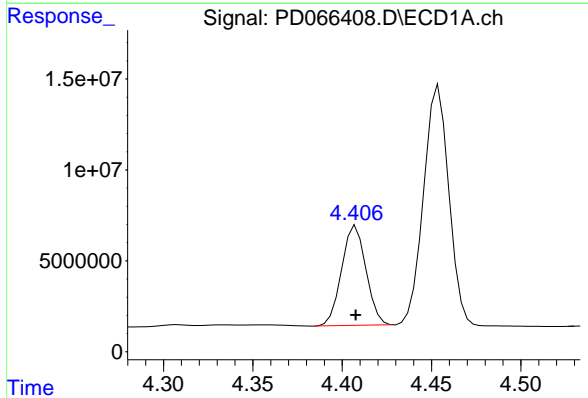


#5 Aldrin
 R.T.: 4.699 min
 Delta R.T.: 0.000 min
 Response: 129037438
 Conc: 41.96 ng/ml

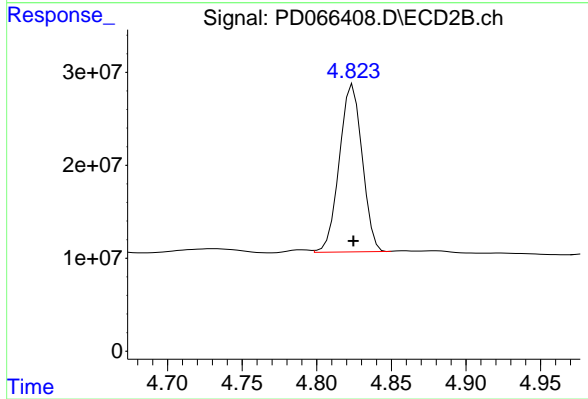
Instrument :
 ECD_D
 ClientSampled :



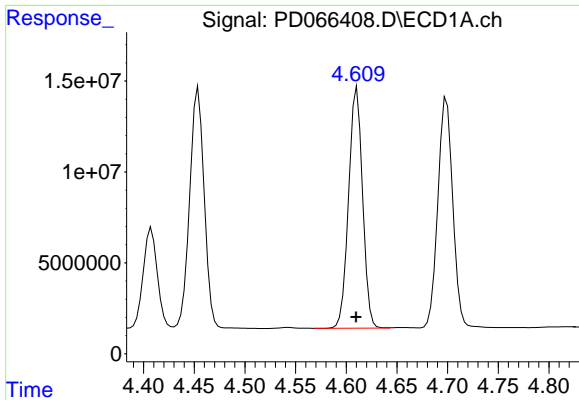
#5 Aldrin
 R.T.: 5.451 min
 Delta R.T.: 0.000 min
 Response: 388385129
 Conc: 38.52 ng/ml



#6 beta-BHC
 R.T.: 4.408 min
 Delta R.T.: 0.000 min
 Response: 52096723
 Conc: 39.13 ng/ml



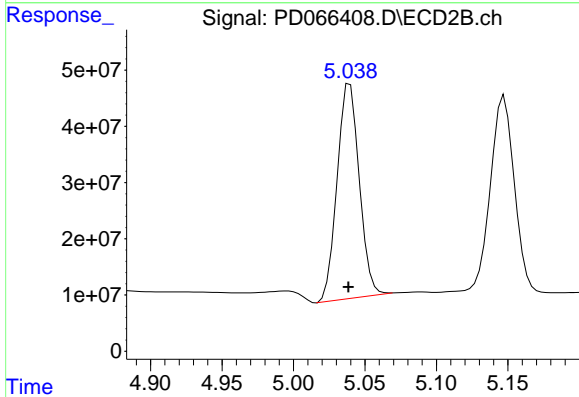
#6 beta-BHC
 R.T.: 4.824 min
 Delta R.T.: 0.000 min
 Response: 192484340
 Conc: 36.97 ng/ml



#7 delta-BHC

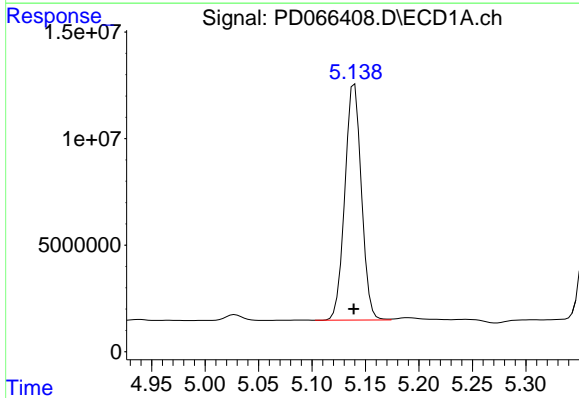
R.T.: 4.611 min
 Delta R.T.: 0.000 min
 Response: 126443505
 Conc: 43.83 ng/ml

Instrument :
 ECD_D
 ClientSampled :



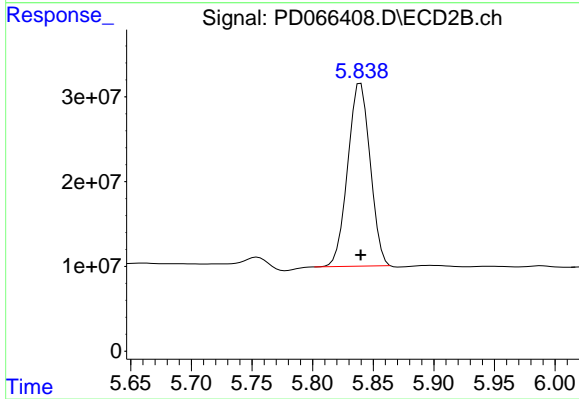
#7 delta-BHC

R.T.: 5.040 min
 Delta R.T.: 0.001 min
 Response: 410484131
 Conc: 42.42 ng/ml



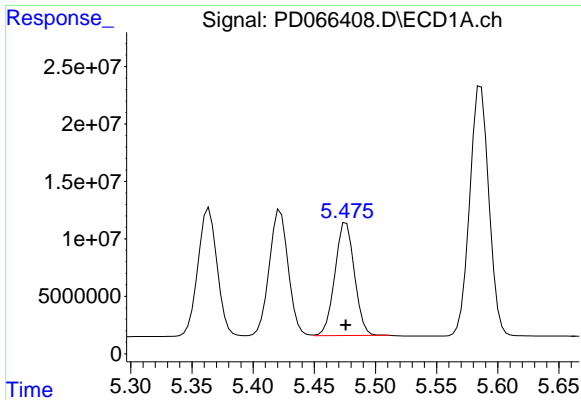
#8 Heptachlor epoxide

R.T.: 5.140 min
 Delta R.T.: 0.000 min
 Response: 119469409
 Conc: 44.15 ng/ml



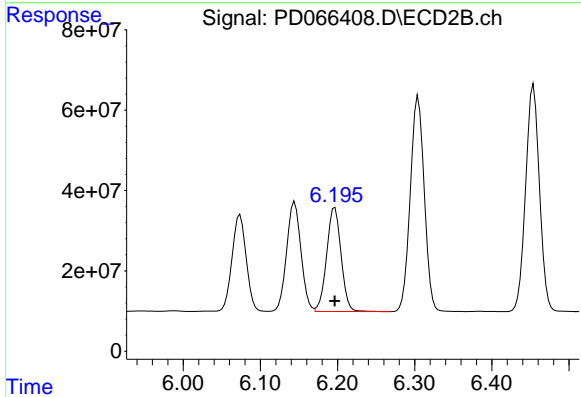
#8 Heptachlor epoxide

R.T.: 5.840 min
 Delta R.T.: 0.000 min
 Response: 277229483
 Conc: 34.52 ng/ml

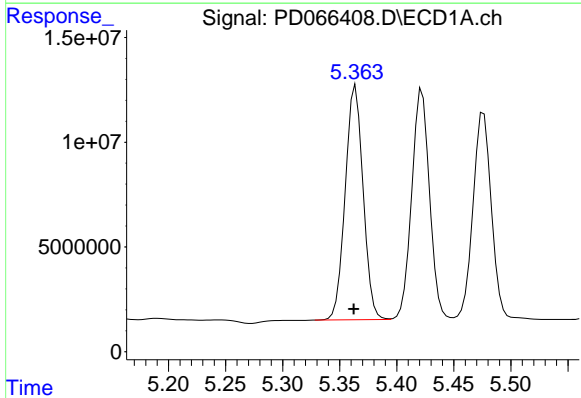


#9 Endosulfan I
 R.T.: 5.476 min
 Delta R.T.: 0.000 min
 Response: 109148091
 Conc: 43.17 ng/ml

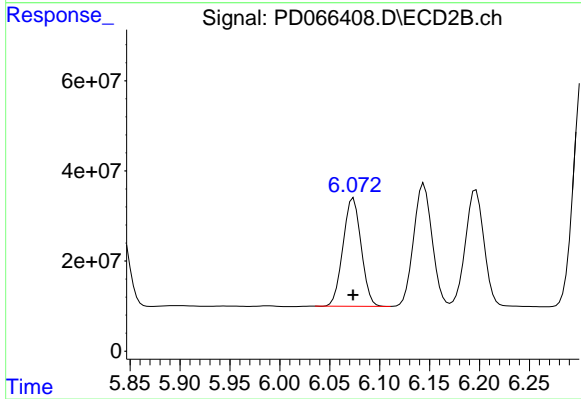
Instrument :
 ECD_D
 ClientSampleId :



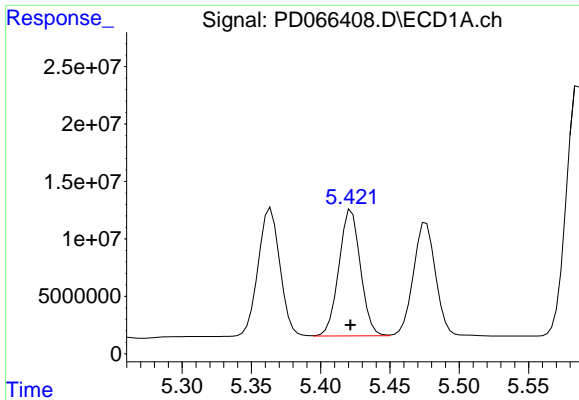
#9 Endosulfan I
 R.T.: 6.197 min
 Delta R.T.: 0.000 min
 Response: 337549567
 Conc: 40.03 ng/ml



#10 trans-Chlordane
 R.T.: 5.364 min
 Delta R.T.: 0.002 min
 Response: 121891448
 Conc: 44.47 ng/ml

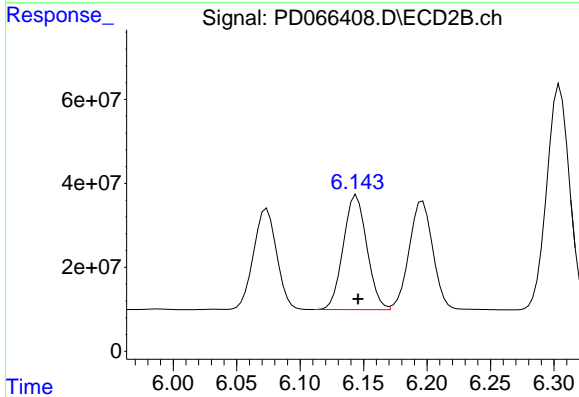


#10 trans-Chlordane
 R.T.: 6.074 min
 Delta R.T.: 0.000 min
 Response: 304044777
 Conc: 33.63 ng/ml

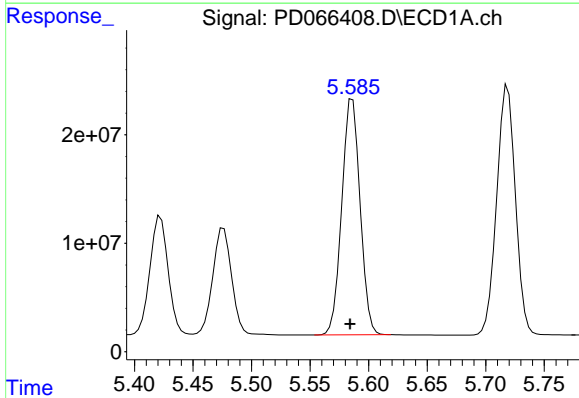


#11 cis-Chlordane
 R.T.: 5.422 min
 Delta R.T.: 0.000 min
 Response: 118840943
 Conc: 44.31 ng/ml

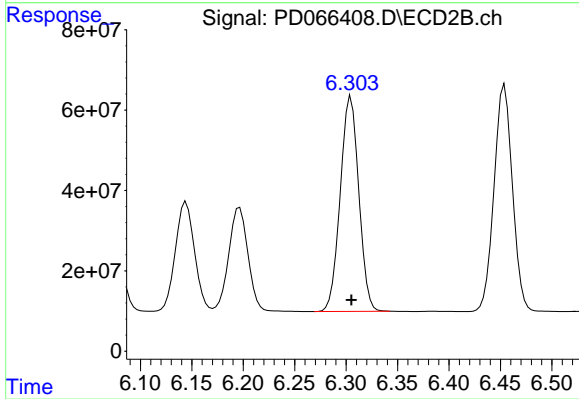
Instrument :
 ECD_D
 ClientSampled :



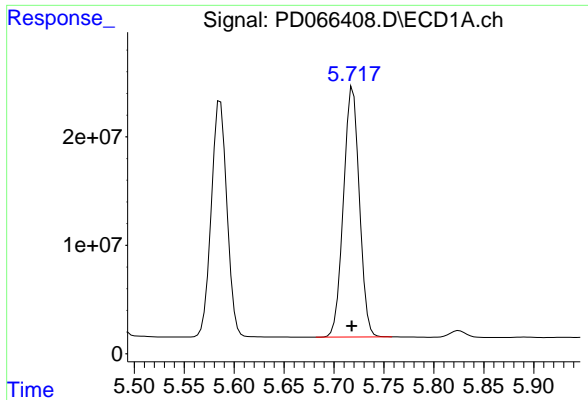
#11 cis-Chlordane
 R.T.: 6.144 min
 Delta R.T.: -0.001 min
 Response: 352769789
 Conc: 39.79 ng/ml



#12 4,4'-DDE
 R.T.: 5.586 min
 Delta R.T.: 0.002 min
 Response: 237231111
 Conc: 94.71 ng/ml

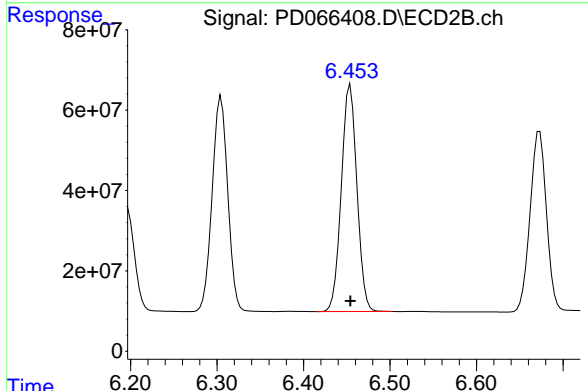


#12 4,4'-DDE
 R.T.: 6.305 min
 Delta R.T.: 0.000 min
 Response: 671476850
 Conc: 84.50 ng/ml

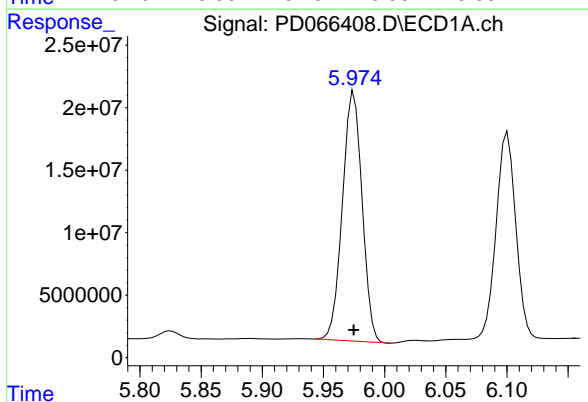


#13 Dieldrin
 R.T.: 5.719 min
 Delta R.T.: 0.001 min
 Response: 255825268
 Conc: 95.25 ng/ml

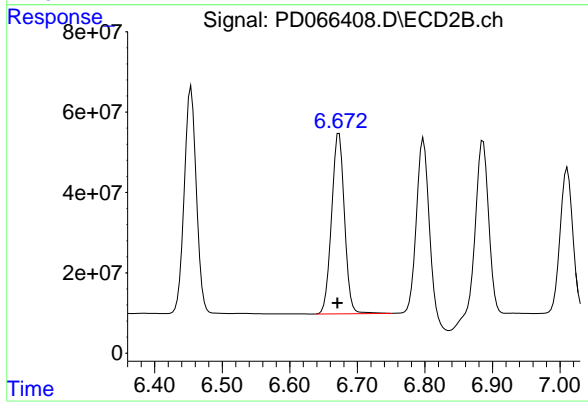
Instrument :
 ECD_D
 ClientSampled :



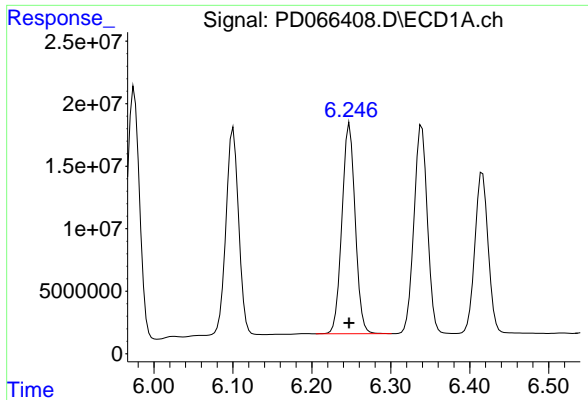
#13 Dieldrin
 R.T.: 6.454 min
 Delta R.T.: 0.000 min
 Response: 702928152
 Conc: 83.16 ng/ml



#14 Endrin
 R.T.: 5.975 min
 Delta R.T.: 0.000 min
 Response: 223259326
 Conc: 93.91 ng/ml

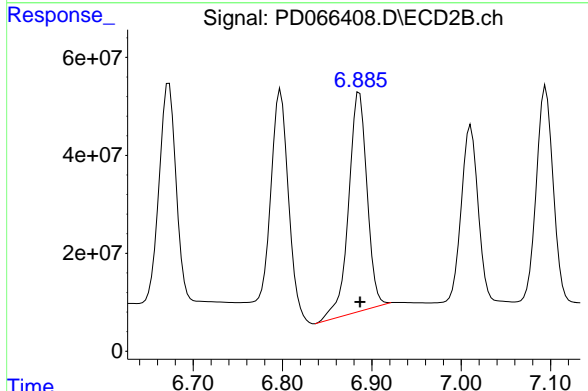


#14 Endrin
 R.T.: 6.673 min
 Delta R.T.: 0.002 min
 Response: 598294325
 Conc: 113.04 ng/ml

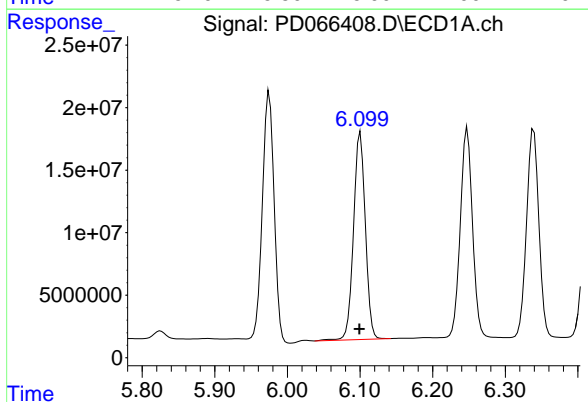


#15 Endosulfan II
 R.T.: 6.248 min
 Delta R.T.: 0.000 min
 Response: 196030271
 Conc: 87.27 ng/ml

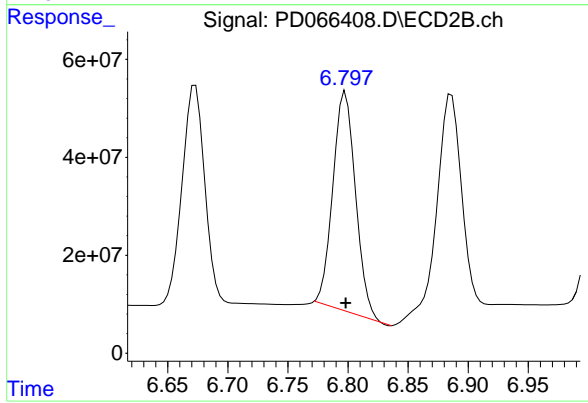
Instrument :
 ECD_D
 ClientSampled :



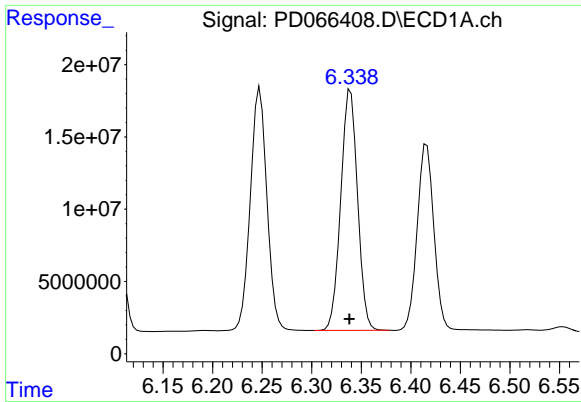
#15 Endosulfan II
 R.T.: 6.886 min
 Delta R.T.: 0.000 min
 Response: 639142696
 Conc: 89.69 ng/ml



#16 4,4'-DDD
 R.T.: 6.101 min
 Delta R.T.: 0.001 min
 Response: 187346685
 Conc: 90.22 ng/ml



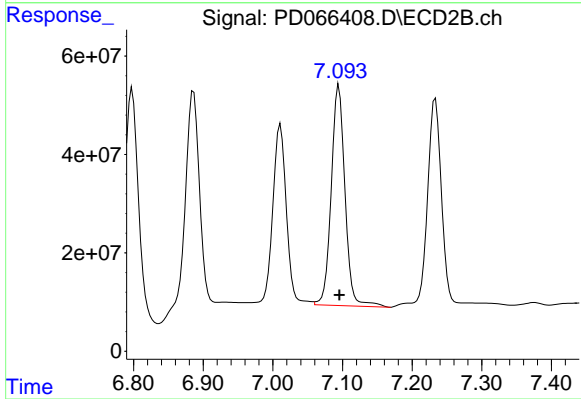
#16 4,4'-DDD
 R.T.: 6.798 min
 Delta R.T.: 0.000 min
 Response: 589104596
 Conc: 88.29 ng/ml



#17 4,4'-DDT

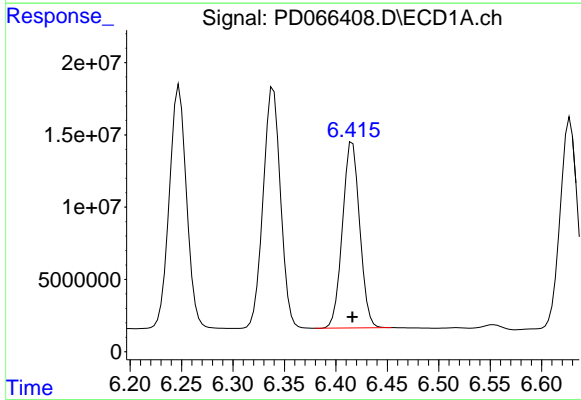
R.T.: 6.339 min
Delta R.T.: 0.001 min
Response: 196347815
Conc: 98.67 ng/ml

Instrument :
ECD_D
ClientSampleId :



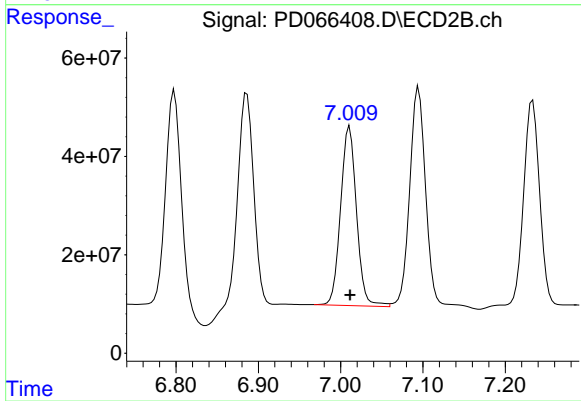
#17 4,4'-DDT

R.T.: 7.095 min
Delta R.T.: 0.000 min
Response: 616423064
Conc: 93.99 ng/ml



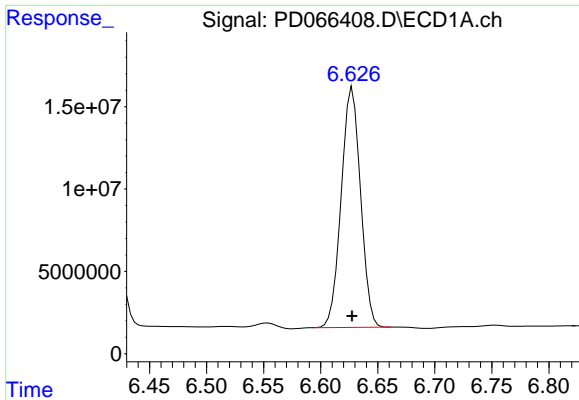
#18 Endrin aldehyde

R.T.: 6.416 min
Delta R.T.: 0.000 min
Response: 150316323
Conc: 95.97 ng/ml



#18 Endrin aldehyde

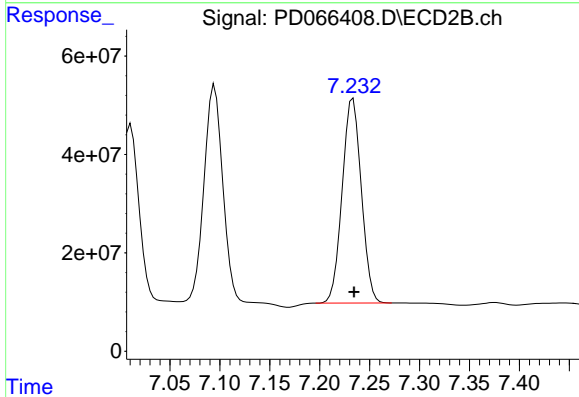
R.T.: 7.011 min
Delta R.T.: 0.000 min
Response: 490170846
Conc: 92.47 ng/ml



#19 Endosulfan Sulfate

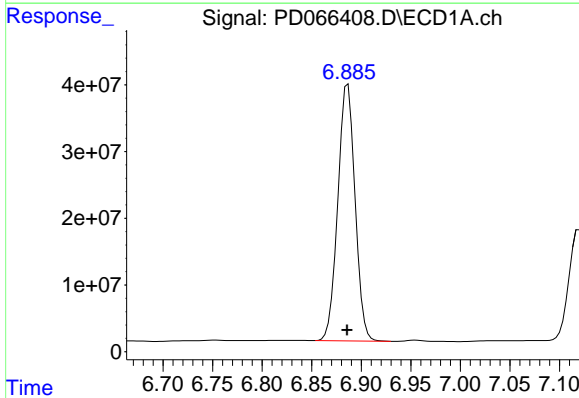
R.T.: 6.628 min
 Delta R.T.: 0.000 min
 Response: 171740814
 Conc: 86.55 ng/ml

Instrument :
 ECD_D
 ClientSampled :



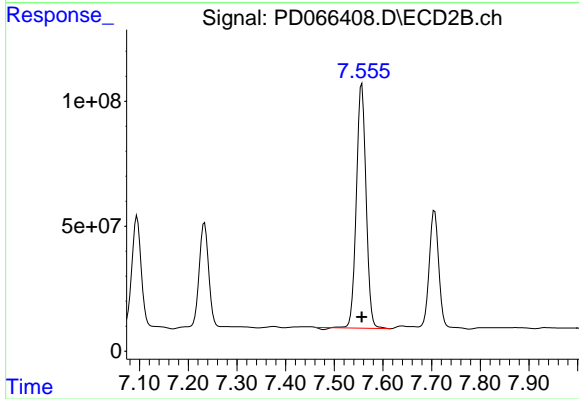
#19 Endosulfan Sulfate

R.T.: 7.233 min
 Delta R.T.: 0.000 min
 Response: 554299977
 Conc: 84.05 ng/ml



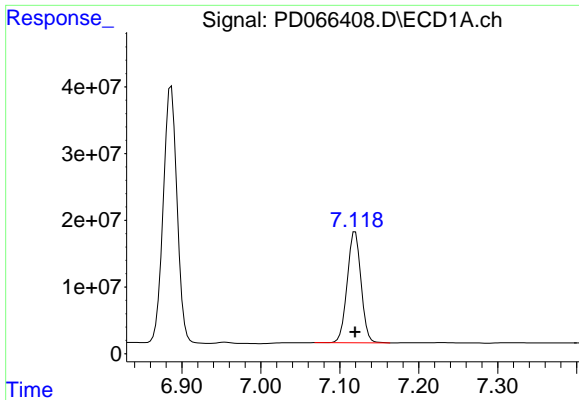
#20 Methoxychlor

R.T.: 6.886 min
 Delta R.T.: 0.000 min
 Response: 465459948
 Conc: 448.90 ng/ml



#20 Methoxychlor

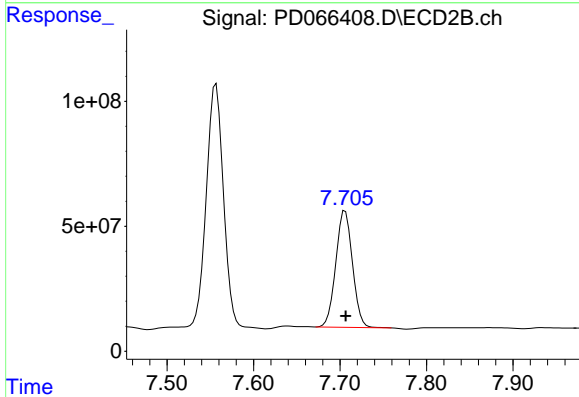
R.T.: 7.557 min
 Delta R.T.: 0.000 min
 Response: 1353299022
 Conc: 416.70 ng/ml



#21 Endrin ketone

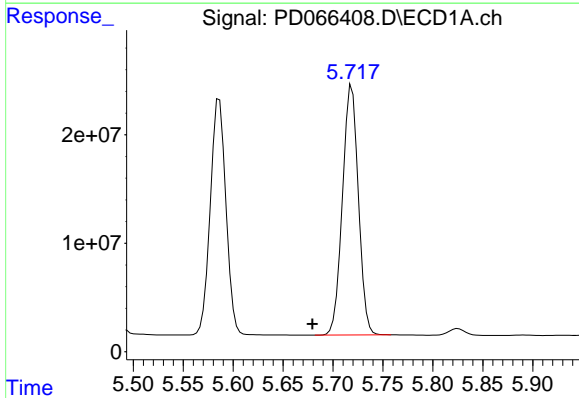
R.T.: 7.120 min
 Delta R.T.: 0.000 min
 Response: 203176773
 Conc: 87.98 ng/ml

Instrument :
 ECD_D
 ClientSampled :



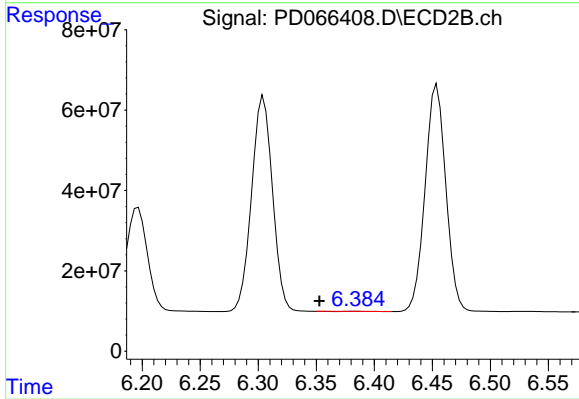
#21 Endrin ketone

R.T.: 7.706 min
 Delta R.T.: 0.000 min
 Response: 620653814
 Conc: 86.54 ng/ml



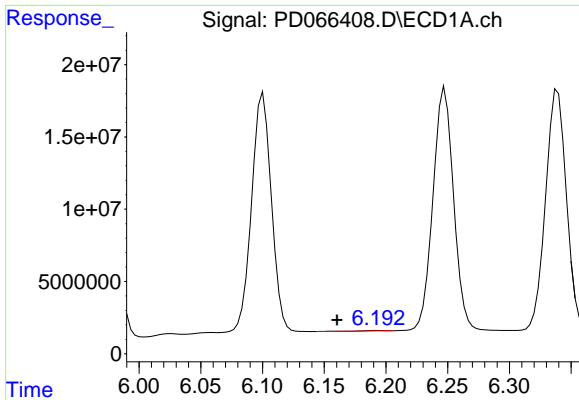
#22 Toxaphene-1

R.T.: 5.719 min
 Delta R.T.: 0.040 min
 Response: 255825268
 Conc: 15268.67 ng/ml



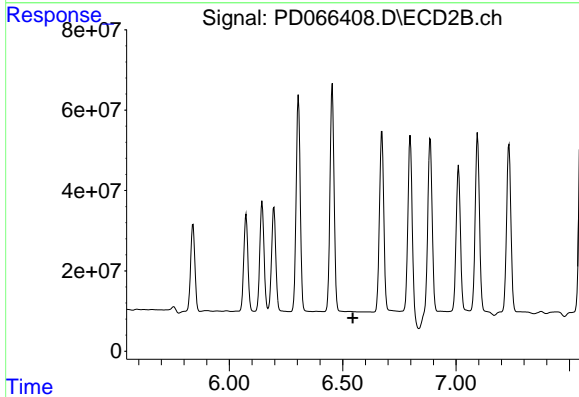
#22 Toxaphene-1

R.T.: 6.385 min
 Delta R.T.: 0.033 min
 Response: 269500
 Conc: 7.31 ng/ml

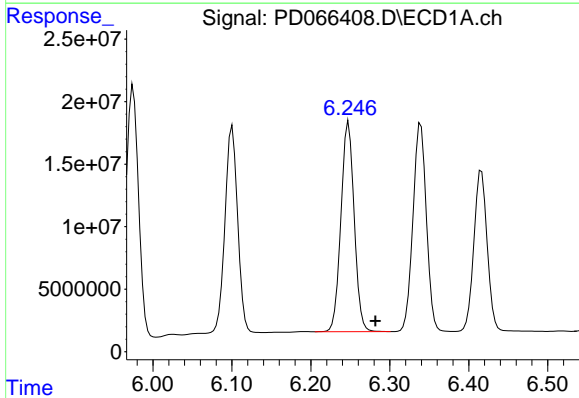


#23 Toxaphene-2
 R.T.: 6.193 min
 Delta R.T.: 0.033 min
 Response: 337332
 Conc: 19.86 ng/ml

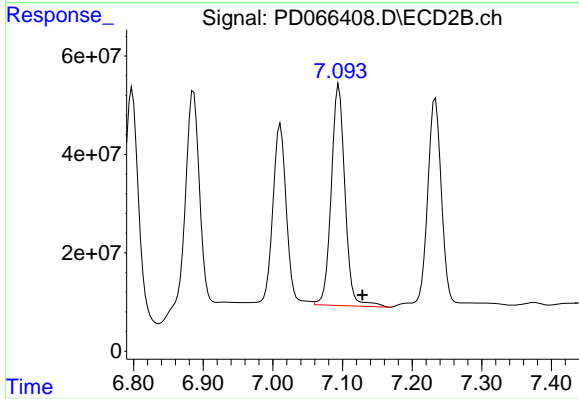
Instrument :
 ECD_D
 ClientSampleId :



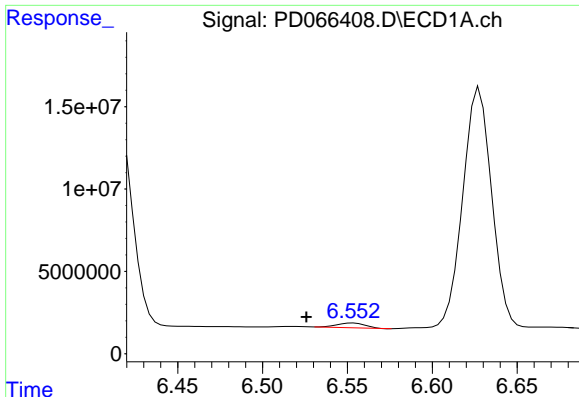
#23 Toxaphene-2
 R.T.: 0.000 min
 Exp R.T. : 6.545 min
 Response: 0
 Conc: N.D.



#24 Toxaphene-3
 R.T.: 6.248 min
 Delta R.T.: -0.034 min
 Response: 196030271
 Conc: 4928.44 ng/ml



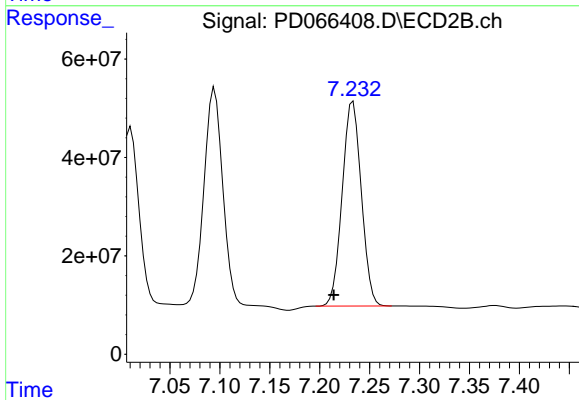
#24 Toxaphene-3
 R.T.: 7.095 min
 Delta R.T.: -0.034 min
 Response: 616423064
 Conc: 5684.49 ng/ml



#25 Toxaphene-4

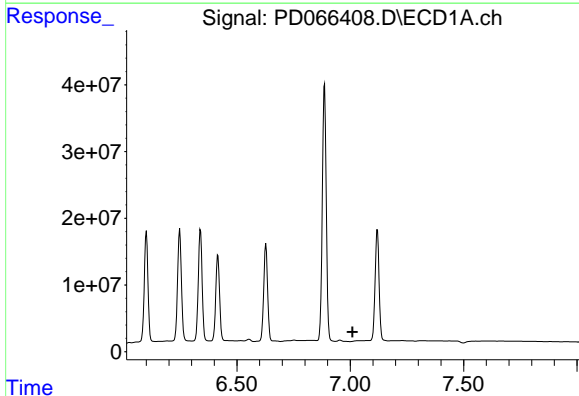
R.T.: 6.553 min
 Delta R.T.: 0.027 min
 Response: 3457014
 Conc: 84.67 ng/ml

Instrument :
 ECD_D
 ClientSampled :



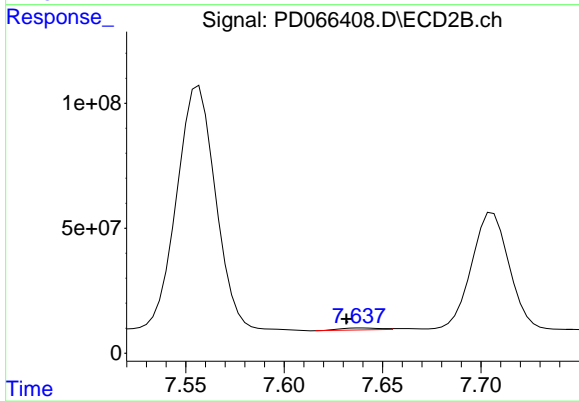
#25 Toxaphene-4

R.T.: 7.233 min
 Delta R.T.: 0.019 min
 Response: 554299977
 Conc: 5087.04 ng/ml



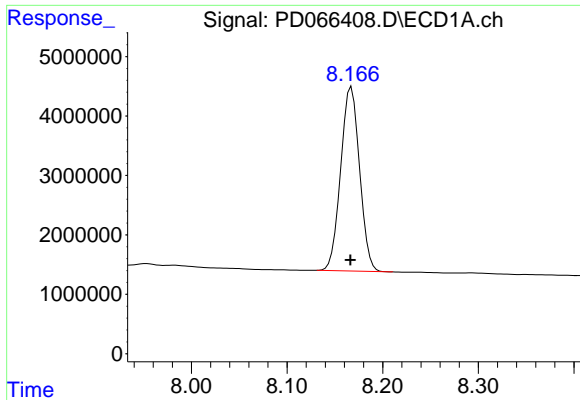
#26 Toxaphene-5

R.T.: 7.040 min
 Delta R.T.: 0.030 min
 Response: -63274
 Conc: N.D.



#26 Toxaphene-5

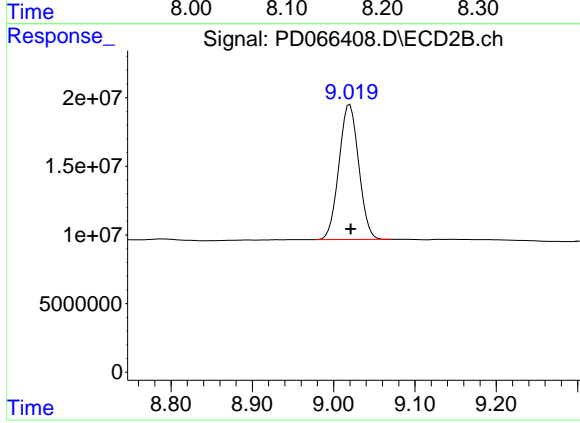
R.T.: 7.639 min
 Delta R.T.: 0.008 min
 Response: 10915412
 Conc: 137.68 ng/ml



#27 Decachlorobiphenyl

R.T.: 8.167 min
Delta R.T.: 0.000 min
Response: 42611890
Conc: 31.34 ng/ml

Instrument :
ECD_D
ClientSampleId :



#27 Decachlorobiphenyl

R.T.: 9.020 min
Delta R.T.: 0.000 min
Response: 166036828
Conc: 34.96 ng/ml