

Data Path : Z:\pestpcbsrv\HPCHEM1\ECD_D\Data\PD101921\
 Data File : PD066412.D
 Signal(s) : Signal #1: ECD1A.ch Signal #2: ECD2B.ch
 Acq On : 19 Oct 2021 21:05
 Operator : AJ\MA
 Sample : PB139936BL
 Misc :
 ALS Vial : 28 Sample Multiplier: 1

Instrument :
 ECD_D
 ClientSampleId :

Integration File signal 1: autoint1.e
 Integration File signal 2: autoint2.e
 Quant Time: Oct 20 06:26:33 2021
 Quant Method : Z:\pestpcbsrv\HPCHEM1\ECD_D\Method\PD101621CLP.M
 Quant Title : GC Extractables
 QLast Update : Tue Oct 19 10:18:55 2021
 Response via : Initial Calibration
 Integrator: ChemStation

Volume Inj. : 1 µl
 Signal #1 Phase : ZB-MR2 Signal #2 Phase: ZB-MR1
 Signal #1 Info : 30M x 0.32mm x0.2 Signal #2 Info : 30M x 0.32mm x 0.50µm

	Compound	RT#1	RT#2	Resp#1	Resp#2	ng/ml	ng/ml

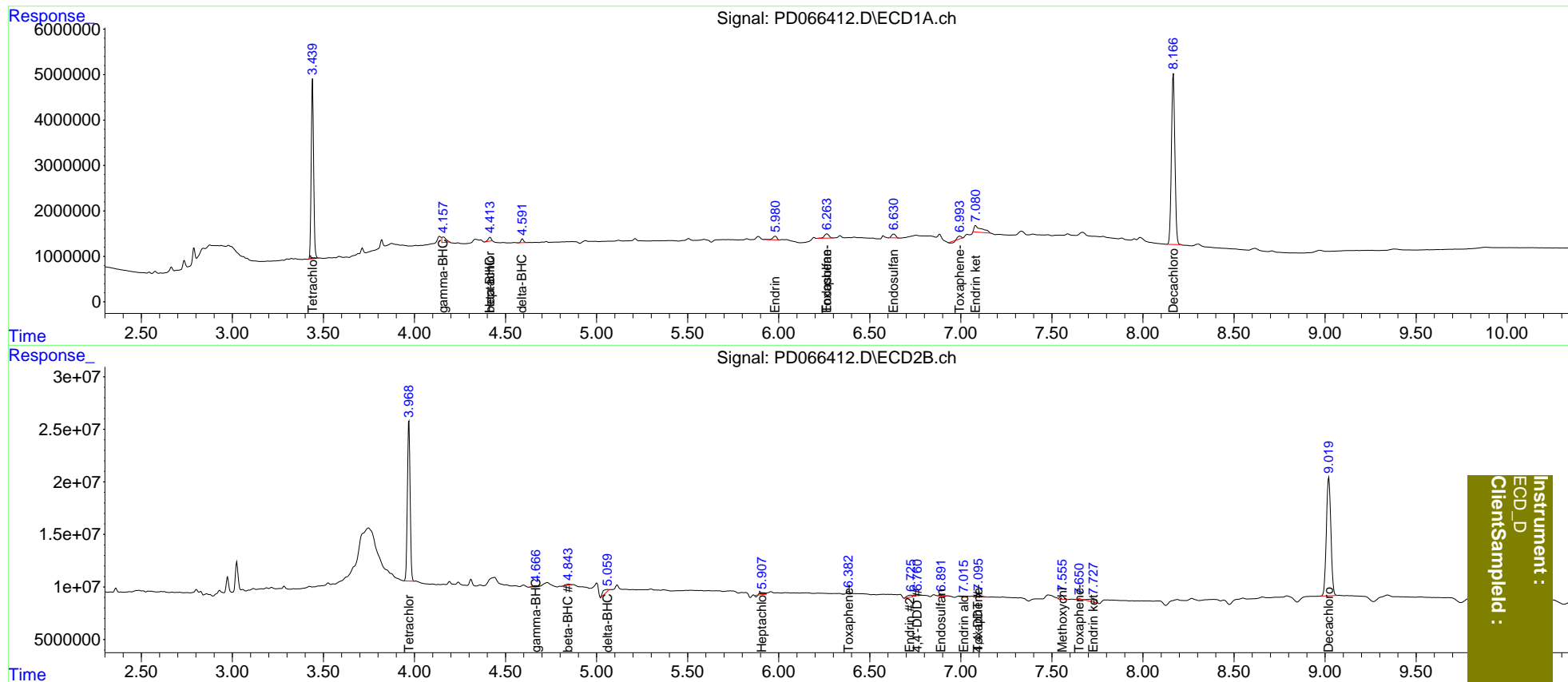
System Monitoring Compounds							
1)	SA Tetrachlo...	3.440	3.970	35949291	159.9E6	17.606	17.944
27)	SA Decachlor...	8.167	9.021	49745523	194.2E6	36.589	40.902
Target Compounds							
2)	A alpha-BHC	0.000	4.362	0	873838	N.D.	<MDL
3)	MA gamma-BHC...	4.159	4.667	1914452	1567460	0.620	0.142 #
4)	MA Heptachlor	4.415f	0.000	1047521	0	0.358	N.D. #
6)	B beta-BHC	4.415	4.846	1047521	1896565	0.787	0.364 #
7)	B delta-BHC	4.593	5.060	836358	5679065	0.290	0.587 #
8)	B Heptachlo...	0.000	5.908f	0	3159410	N.D.	0.393
14)	MA Endrin	5.982	6.724f	1286489	3448775	0.541	0.652
15)	B Endosulfa...	6.265	6.892	1689614	1111027	0.752	0.156 #
16)	A 4,4'-DDD	0.000	6.762f	0	1615140	N.D.	0.242
17)	MA 4,4'-DDT	0.000	7.096	0	5507111	N.D.	0.840
18)	B Endrin al...	0.000	7.016	0	1636180	N.D.	0.309
19)	B Endosulfa...	6.632	0.000	1337570	0	0.674	N.D. #
20)	A Methoxychlor	0.000	7.557	0	5297985	N.D.	1.631
21)	B Endrin ke...	7.081f	7.727	4154894	7841551	1.799	1.093 #
22)	Toxaphene-1	0.000	6.383	0	2659976	N.D.	72.186
24)	Toxaphene-3	6.265	7.096	1689614	5507111	42.479	50.785
26)	Toxaphene-5	6.994	7.651	369011	784820	8.865	9.899

(f)=RT Delta > 1/2 Window (#)=Amounts differ by > 25% (m)=manual int.

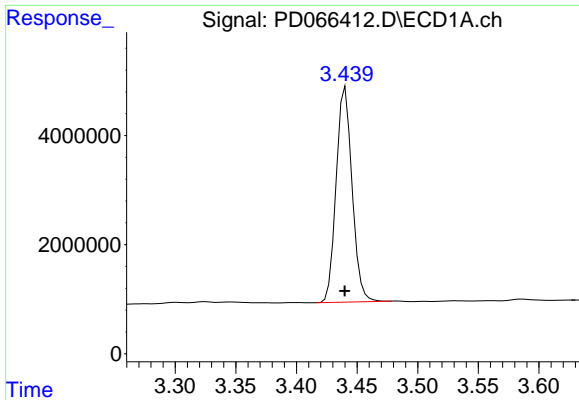
Data Path : Z:\pestpcbsrv\HPCHEM1\ECD_D\Data\PD101921\
 Data File : PD066412.D
 Signal(s) : Signal #1: ECD1A.ch Signal #2: ECD2B.ch
 Acq On : 19 Oct 2021 21:05
 Operator : AJ\MA
 Sample : PB139936BL
 Misc :
 ALS Vial : 28 Sample Multiplier: 1

Integration File signal 1: autoint1.e
 Integration File signal 2: autoint2.e
 Quant Time: Oct 20 06:26:33 2021
 Quant Method : Z:\pestpcbsrv\HPCHEM1\ECD_D\Method\PD101621CLP.M
 Quant Title : GC Extractables
 QLast Update : Tue Oct 19 10:18:55 2021
 Response via : Initial Calibration
 Integrator: ChemStation

Volume Inj. : 1 µl
 Signal #1 Phase : ZB-MR2 Signal #2 Phase: ZB-MR1
 Signal #1 Info : 30M x 0.32mm x0.2 Signal #2 Info : 30M x 0.32mm x 0.50µm

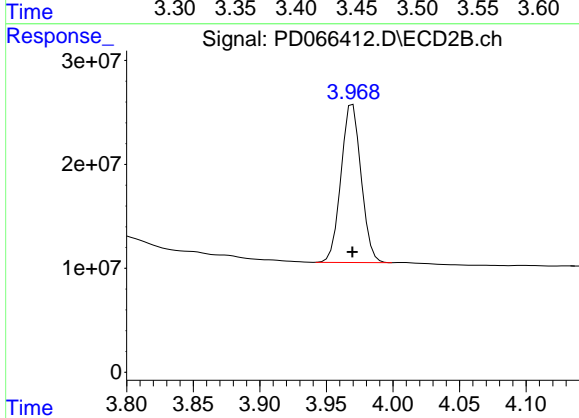


Instrument :
 ECD_D
 ClientSampleId :

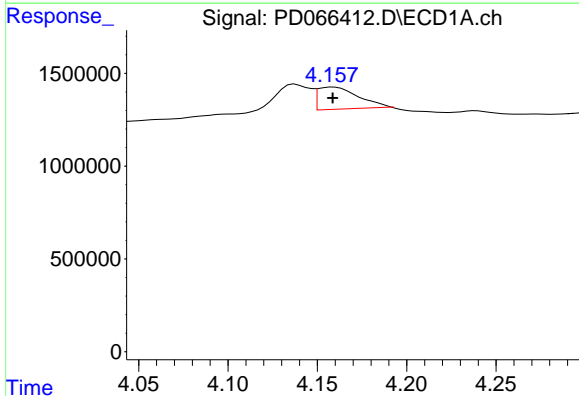


#1 Tetrachloro-m-xylene
 R.T.: 3.440 min
 Delta R.T.: 0.000 min
 Response: 35949291
 Conc: 17.61 ng/ml

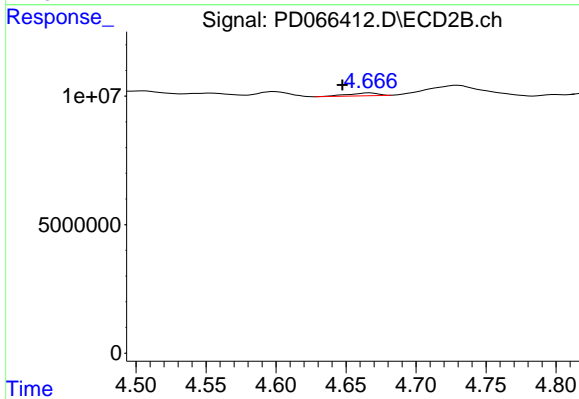
Instrument :
 ECD_D
 ClientSampleId :



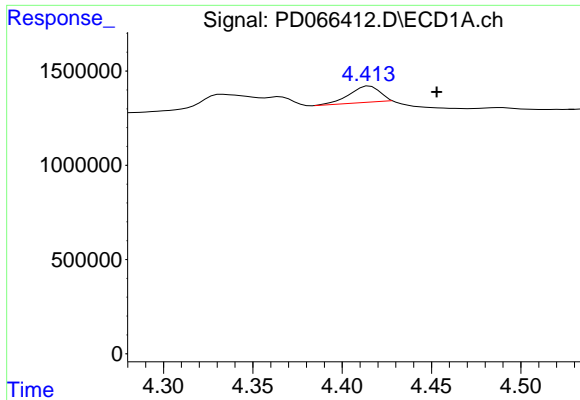
#1 Tetrachloro-m-xylene
 R.T.: 3.970 min
 Delta R.T.: 0.000 min
 Response: 159910028
 Conc: 17.94 ng/ml



#3 gamma-BHC (Lindane)
 R.T.: 4.159 min
 Delta R.T.: 0.000 min
 Response: 1914452
 Conc: 0.62 ng/ml

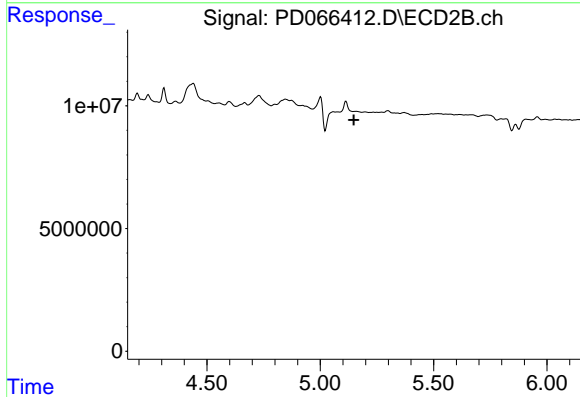


#3 gamma-BHC (Lindane)
 R.T.: 4.667 min
 Delta R.T.: 0.020 min
 Response: 1567460
 Conc: 0.14 ng/ml

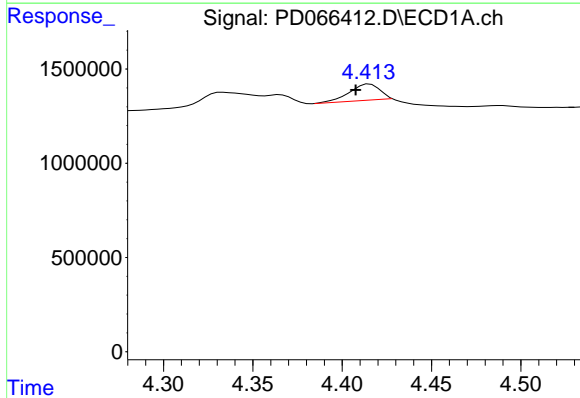


#4 Heptachlor
 R.T.: 4.415 min
 Delta R.T.: -0.037 min
 Response: 1047521
 Conc: 0.36 ng/ml

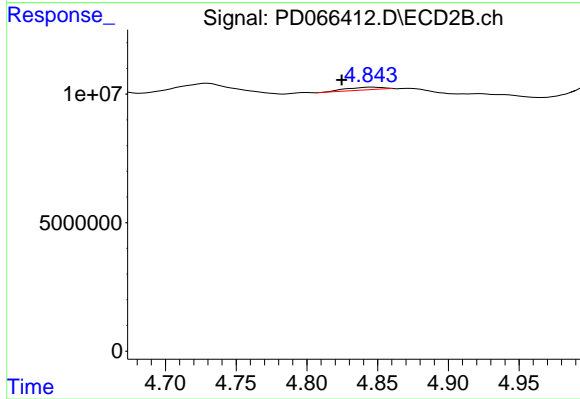
Instrument :
 ECD_D
 ClientSampleId :



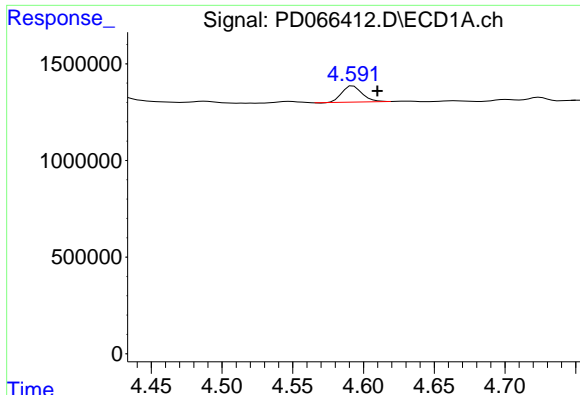
#4 Heptachlor
 R.T.: 0.000 min
 Exp R.T. : 5.147 min
 Response: 0
 Conc: N.D.



#6 beta-BHC
 R.T.: 4.415 min
 Delta R.T.: 0.008 min
 Response: 1047521
 Conc: 0.79 ng/ml



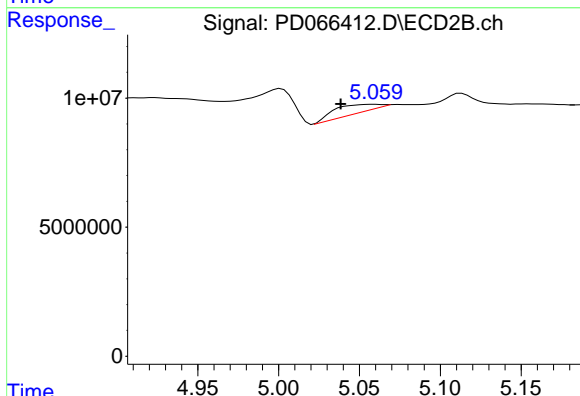
#6 beta-BHC
 R.T.: 4.846 min
 Delta R.T.: 0.021 min
 Response: 1896565
 Conc: 0.36 ng/ml



#7 delta-BHC

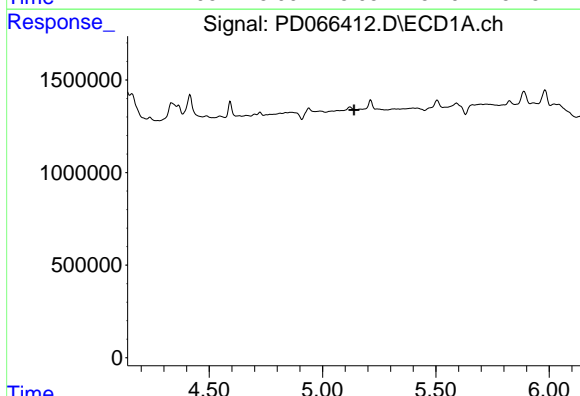
R.T.: 4.593 min
 Delta R.T.: -0.017 min
 Response: 836358
 Conc: 0.29 ng/ml

Instrument :
 ECD_D
 ClientSampleId :



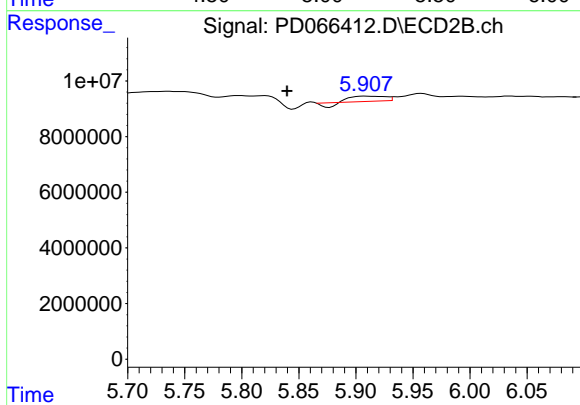
#7 delta-BHC

R.T.: 5.060 min
 Delta R.T.: 0.021 min
 Response: 5679065
 Conc: 0.59 ng/ml



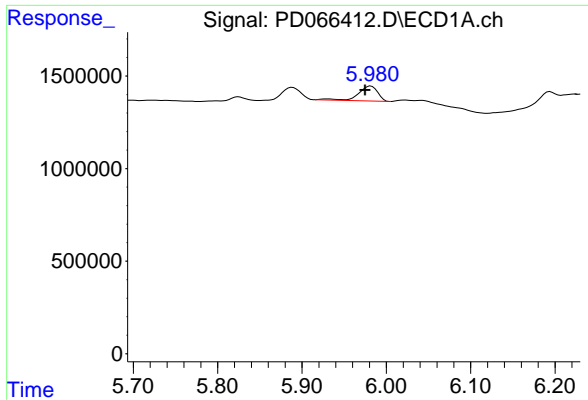
#8 Heptachlor epoxide

R.T.: 0.000 min
 Exp R.T. : 5.139 min
 Response: 0
 Conc: N.D.



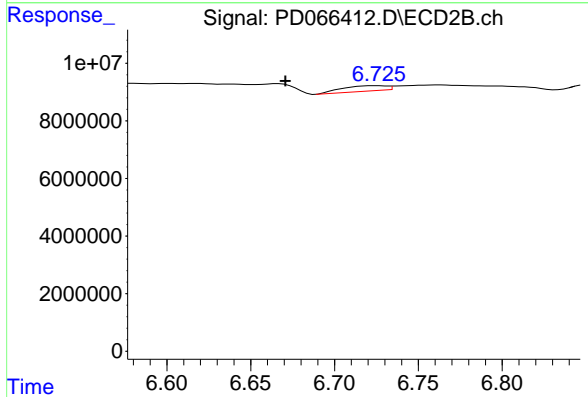
#8 Heptachlor epoxide

R.T.: 5.908 min
 Delta R.T.: 0.069 min
 Response: 3159410
 Conc: 0.39 ng/ml

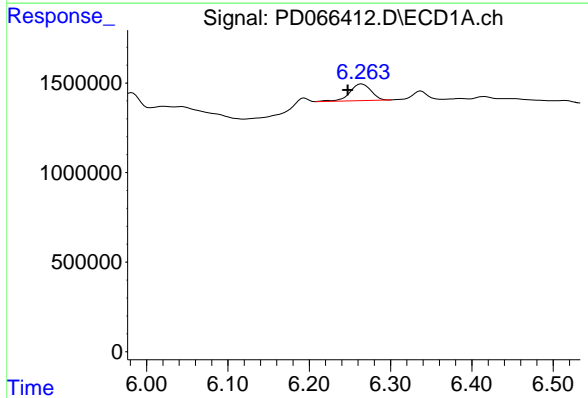


#14 Endrin
 R.T.: 5.982 min
 Delta R.T.: 0.007 min
 Response: 1286489
 Conc: 0.54 ng/ml

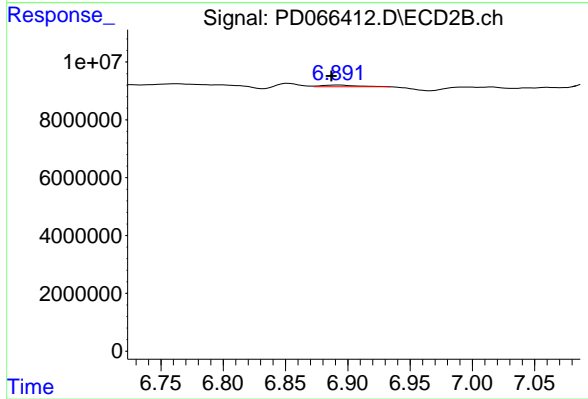
Instrument :
 ECD_D
 ClientSampleId :



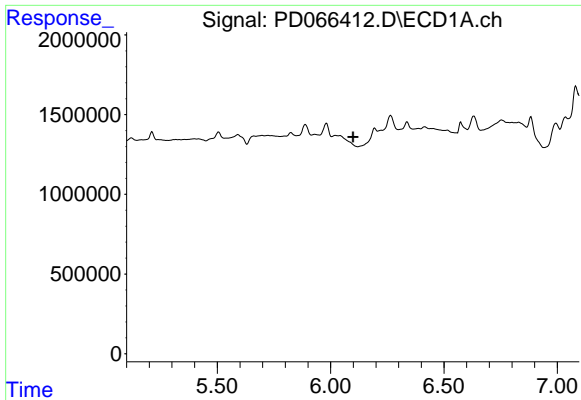
#14 Endrin
 R.T.: 6.724 min
 Delta R.T.: 0.053 min
 Response: 3448775
 Conc: 0.65 ng/ml



#15 Endosulfan II
 R.T.: 6.265 min
 Delta R.T.: 0.017 min
 Response: 1689614
 Conc: 0.75 ng/ml



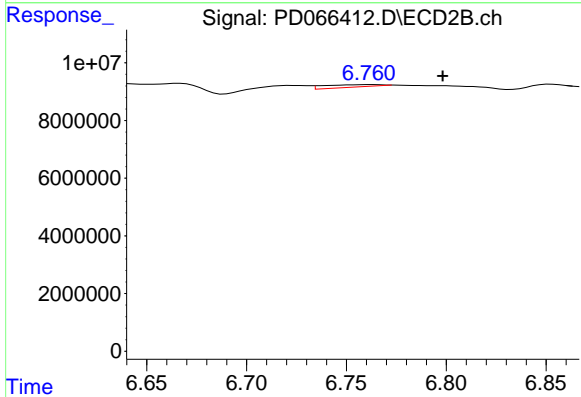
#15 Endosulfan II
 R.T.: 6.892 min
 Delta R.T.: 0.005 min
 Response: 1111027
 Conc: 0.16 ng/ml



#16 4,4'-DDD

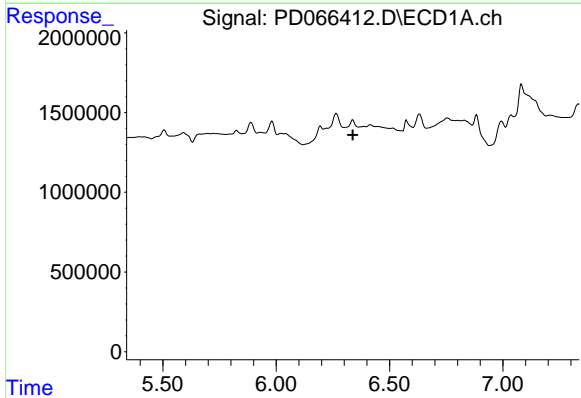
R.T.: 0.000 min
 Exp R.T.: 6.099 min
 Response: 0
 Conc: N.D.

Instrument :
 ECD_D
 ClientSampleId :



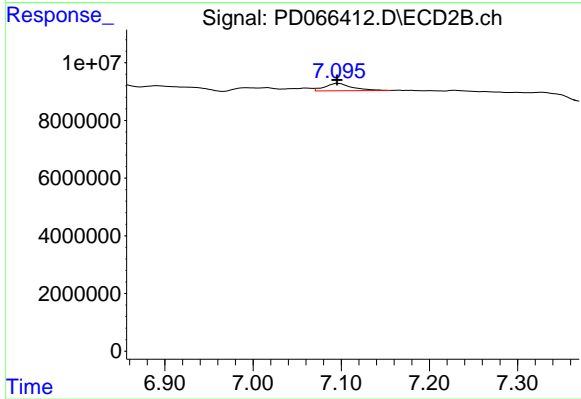
#16 4,4'-DDD

R.T.: 6.762 min
 Delta R.T.: -0.036 min
 Response: 1615140
 Conc: 0.24 ng/ml



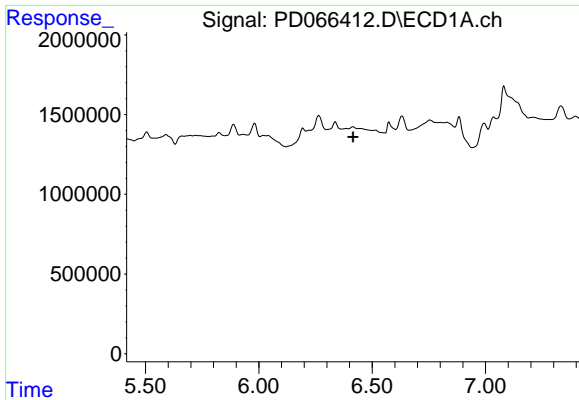
#17 4,4'-DDT

R.T.: 0.000 min
 Exp R.T.: 6.338 min
 Response: 0
 Conc: N.D.



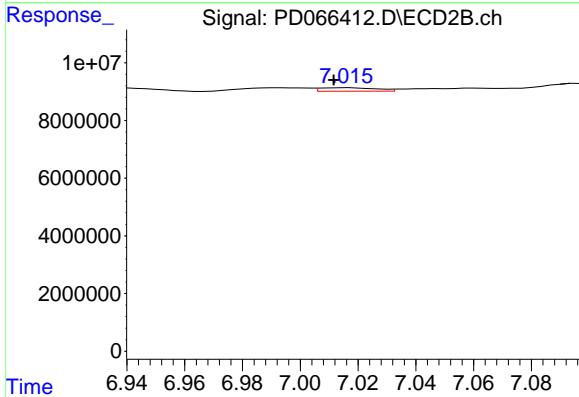
#17 4,4'-DDT

R.T.: 7.096 min
 Delta R.T.: 0.001 min
 Response: 5507111
 Conc: 0.84 ng/ml

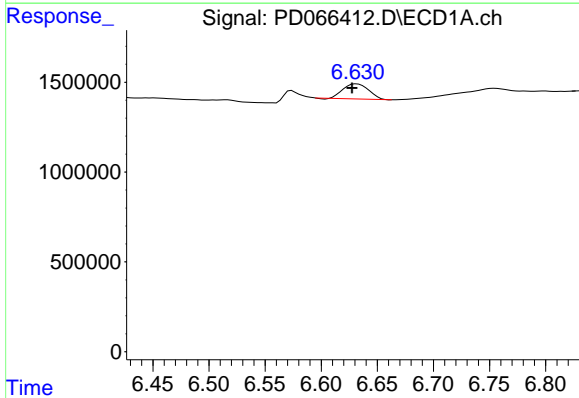


#18 Endrin aldehyde
 R.T.: 0.000 min
 Exp R.T.: 6.416 min
 Response: 0
 Conc: N.D.

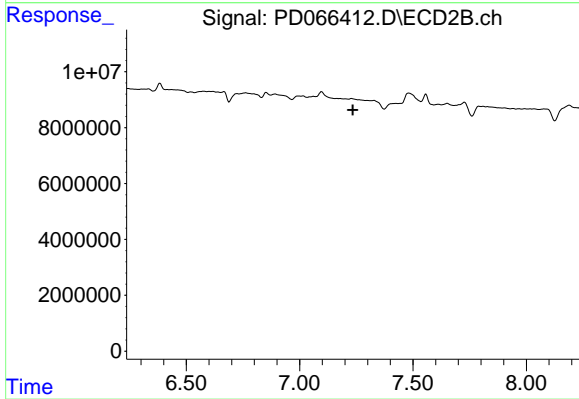
Instrument :
 ECD_D
 ClientSampleId :



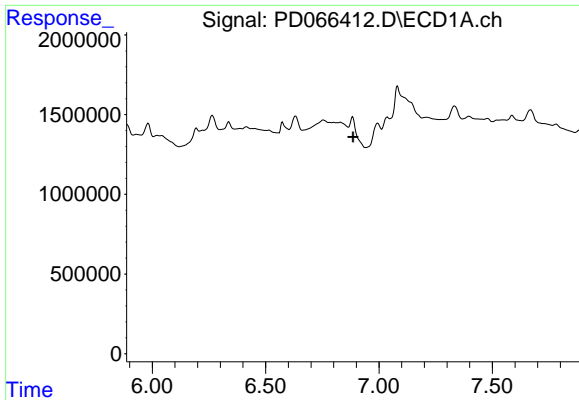
#18 Endrin aldehyde
 R.T.: 7.016 min
 Delta R.T.: 0.005 min
 Response: 1636180
 Conc: 0.31 ng/ml



#19 Endosulfan Sulfate
 R.T.: 6.632 min
 Delta R.T.: 0.004 min
 Response: 1337570
 Conc: 0.67 ng/ml

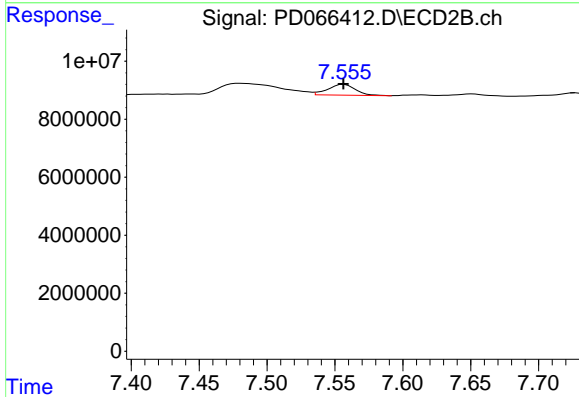


#19 Endosulfan Sulfate
 R.T.: 0.000 min
 Exp R.T.: 7.234 min
 Response: 0
 Conc: N.D.

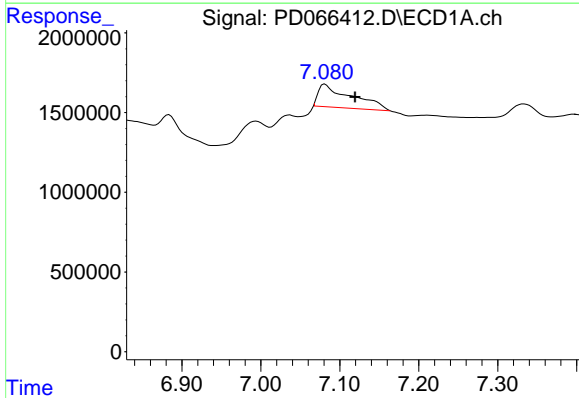


#20 Methoxychlor
 R.T.: 0.000 min
 Exp R.T.: 6.886 min
 Response: 0
 Conc: N.D.

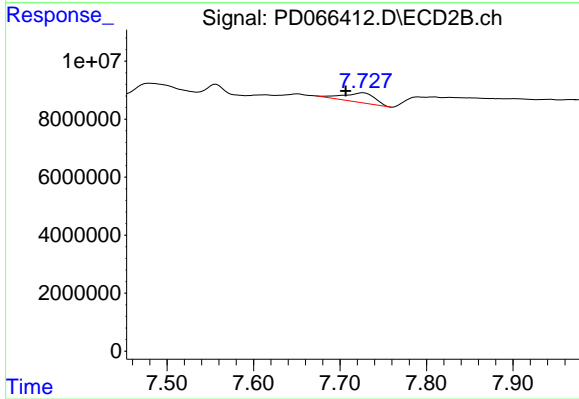
Instrument :
 ECD_D
 ClientSampleId :



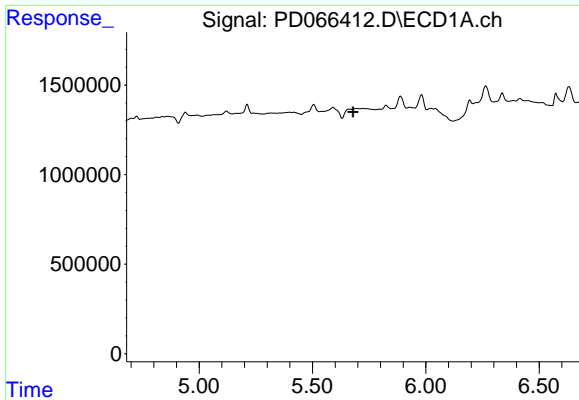
#20 Methoxychlor
 R.T.: 7.557 min
 Delta R.T.: 0.000 min
 Response: 5297985
 Conc: 1.63 ng/ml



#21 Endrin ketone
 R.T.: 7.081 min
 Delta R.T.: -0.038 min
 Response: 4154894
 Conc: 1.80 ng/ml

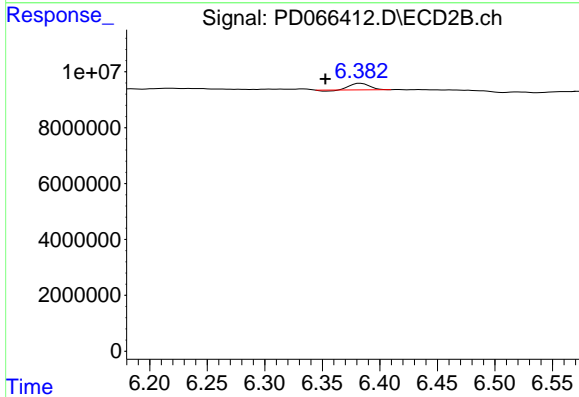


#21 Endrin ketone
 R.T.: 7.727 min
 Delta R.T.: 0.020 min
 Response: 7841551
 Conc: 1.09 ng/ml

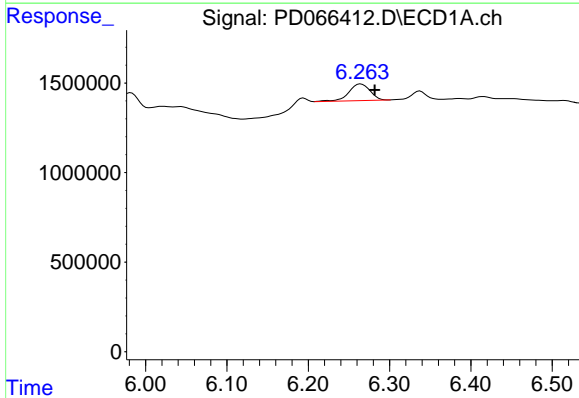


#22 Toxaphene-1
 R.T.: 0.000 min
 Exp R.T.: 5.679 min
 Response: 0
 Conc: N.D.

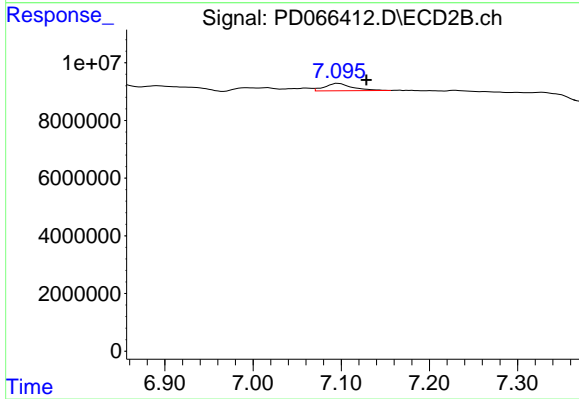
Instrument :
 ECD_D
 ClientSampleId :



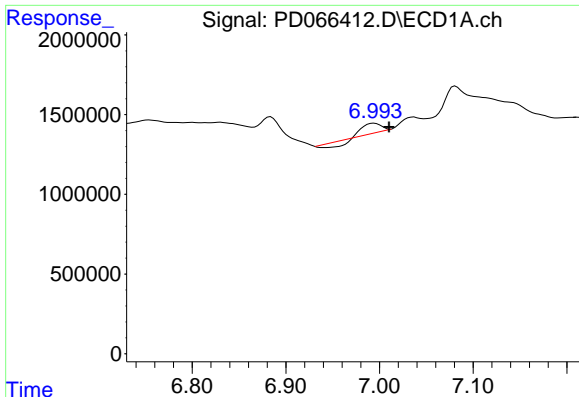
#22 Toxaphene-1
 R.T.: 6.383 min
 Delta R.T.: 0.031 min
 Response: 2659976
 Conc: 72.19 ng/ml



#24 Toxaphene-3
 R.T.: 6.265 min
 Delta R.T.: -0.017 min
 Response: 1689614
 Conc: 42.48 ng/ml



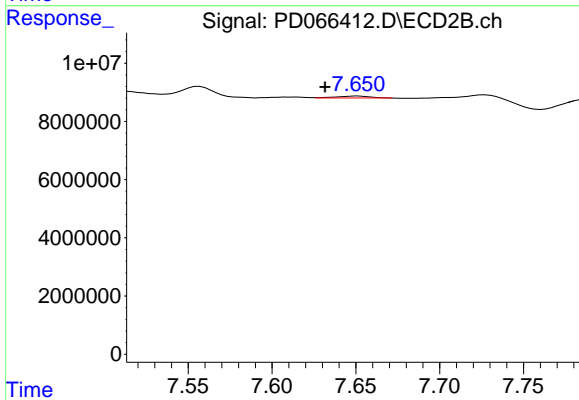
#24 Toxaphene-3
 R.T.: 7.096 min
 Delta R.T.: -0.032 min
 Response: 5507111
 Conc: 50.79 ng/ml



#26 Toxaphene-5

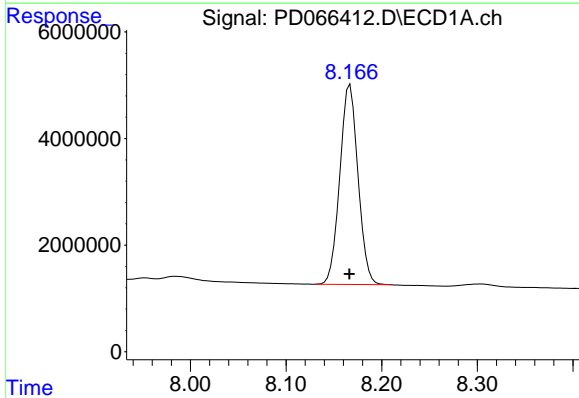
R.T.: 6.994 min
 Delta R.T.: -0.016 min
 Response: 369011
 Conc: 8.87 ng/ml

Instrument :
 ECD_D
 ClientSampleId :



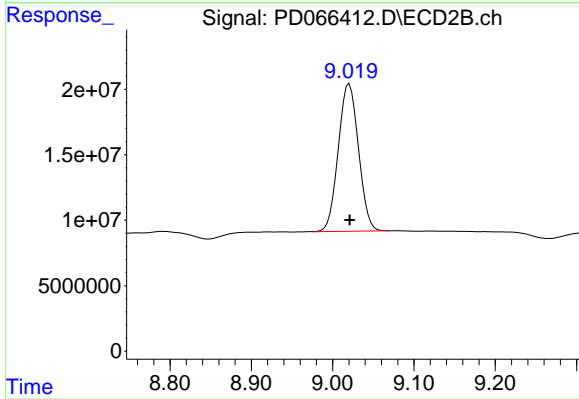
#26 Toxaphene-5

R.T.: 7.651 min
 Delta R.T.: 0.020 min
 Response: 784820
 Conc: 9.90 ng/ml



#27 Decachlorobiphenyl

R.T.: 8.167 min
 Delta R.T.: 0.000 min
 Response: 49745523
 Conc: 36.59 ng/ml



#27 Decachlorobiphenyl

R.T.: 9.021 min
 Delta R.T.: 0.000 min
 Response: 194239251
 Conc: 40.90 ng/ml