

Data Path : Z:\pestpcbsrv\HPCHEM1\ECD_D\Data\PD101924\
 Data File : PD086125.D
 Signal(s) : Signal #1: ECD1A.ch Signal #2: ECD2B.ch
 Acq On : 18 Oct 2024 13:45
 Operator : AR\AJ
 Sample : P4361-10MSD
 Misc :
 ALS Vial : 14 Sample Multiplier: 1

Instrument :
 ECD_D
ClientSampleId :
 EOAZ0MSD

Manual Integrations
APPROVED
 Reviewed By :Abdul Mirza 10/21/2024
 Supervised By :Ankita Jodhani 10/21/2024

Integration File signal 1: autoint1.e
 Integration File signal 2: autoint2.e
 Quant Time: Oct 19 01:39:57 2024
 Quant Method : Z:\pestpcbsrv\HPCHEM1\ECD_D\Method\PD100924CLP.M
 Quant Title : GC Extractables
 QLast Update : Wed Oct 09 17:21:49 2024
 Response via : Initial Calibration
 Integrator: ChemStation

Volume Inj. : 1 µl
 Signal #1 Phase : ZB-MR2 Signal #2 Phase: ZB-MR2
 Signal #1 Info : 30M x 0.32mm x0.5 Signal #2 Info : 30M x 0.32mm x 0.25µm

Compound	RT#1	RT#2	Resp#1	Resp#2	ng/ml	ng/ml

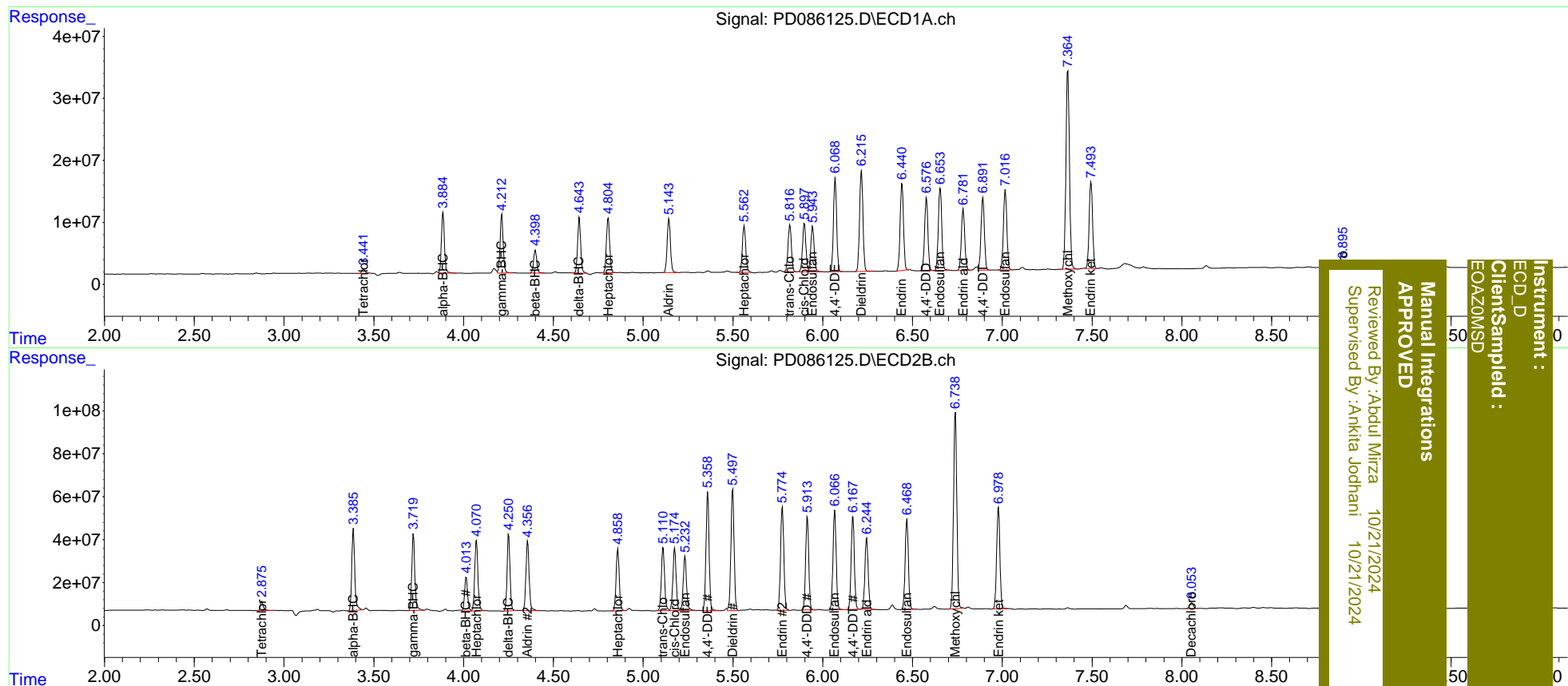
System Monitoring Compounds						
1) SA Tetrachlo...	3.441	2.877	9012885	49327061	7.879m	7.943
2) SA Decachlor...	8.896	8.055	12309466	36459463	6.382	7.497
Target Compounds						
2) A alpha-BHC	3.884	3.386	114.3E6	438.4E6	57.012m	47.510
3) MA gamma-BHC...	4.213	3.720	111.2E6	416.0E6	55.785	48.272
4) MA Heptachlor	4.806	4.072	110.0E6	408.2E6	57.078	55.507
5) MB Aldrin	5.144	4.357	111.1E6	400.0E6	46.164	41.365
6) B beta-BHC	4.400	4.015	44403517	181.0E6	42.145	40.126
7) B delta-BHC	4.645	4.251	106.0E6	399.5E6	48.168	43.119
8) B Heptachlo...	5.563	4.859	98246646	354.9E6	44.112	40.740
9) A Endosulfan I	5.944	5.233	95554481	314.9E6	52.377	45.435
10) B trans-Chl...	5.817	5.111	98983073	368.5E6	44.042	40.962
11) B cis-Chlor...	5.898	5.176	101.6E6	363.3E6	44.543	40.463
12) B 4,4'-DDE	6.070	5.360	187.4E6	661.6E6	98.298	88.022
13) MA Dieldrin	6.216	5.497	214.0E6	702.6E6	108.742	94.920m
14) MA Endrin	6.442	5.775	183.7E6	614.6E6	118.901	104.208
15) B Endosulfa...	6.655	6.067	175.3E6	577.2E6	88.304	82.547
16) A 4,4'-DDD	6.578	5.915	152.0E6	526.1E6	121.859	110.260
17) MA 4,4'-DDT	6.891	6.168	154.2E6	541.6E6	114.282m	108.741
18) B Endrin al...	6.783	6.245	131.8E6	419.5E6	85.932	80.970
19) B Endosulfa...	7.017	6.469	172.1E6	531.7E6	93.965	87.775
20) A Methoxychlor	7.365	6.739	437.3E6	1176.5E6	546.958	561.200
21) B Endrin ke...	7.493	6.979	185.1E6	599.2E6	91.051m	82.276

(f)=RT Delta > 1/2 Window (#)=Amounts differ by > 25% (m)=manual int.

Data Path : Z:\pestpcbsrv\HPCHEM1\ECD_D\Data\PD101924\
 Data File : PD086125.D
 Signal(s) : Signal #1: ECD1A.ch Signal #2: ECD2B.ch
 Acq On : 18 Oct 2024 13:45
 Operator : AR\AJ
 Sample : P4361-10MSD
 Misc :
 ALS Vial : 14 Sample Multiplier: 1

Integration File signal 1: autoint1.e
 Integration File signal 2: autoint2.e
 Quant Time: Oct 19 01:39:57 2024
 Quant Method : Z:\pestpcbsrv\HPCHEM1\ECD_D\Method\PD100924CLP.M
 Quant Title : GC Extractables
 QLast Update : Wed Oct 09 17:21:49 2024
 Response via : Initial Calibration
 Integrator: ChemStation

Volume Inj. : 1 µl
 Signal #1 Phase : ZB-MR1 Signal #2 Phase: ZB-MR2
 Signal #1 Info : 30M x 0.32mm x0.5 Signal #2 Info : 30M x 0.32mm x 0.25µm



Instrument : ECD_D
 Client Sampled : EOAZ0MSD
 Manual Integrations APPROVED
 Reviewed By : Aboul Mirza 10/21/2024
 Supervised By : Ankita Jodhani 10/21/2024