

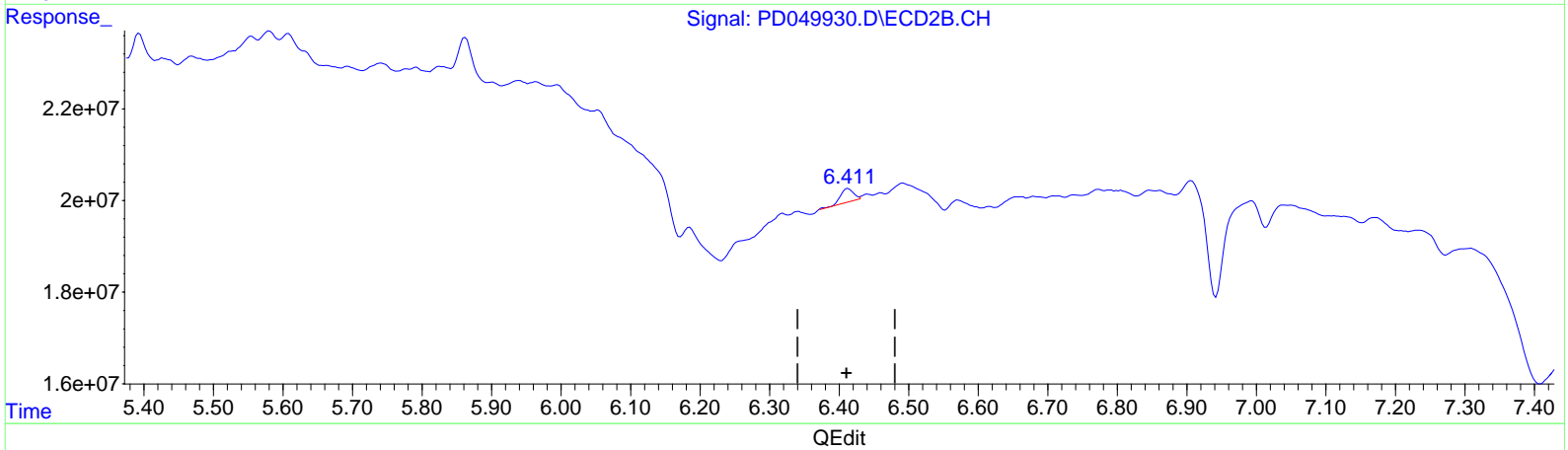
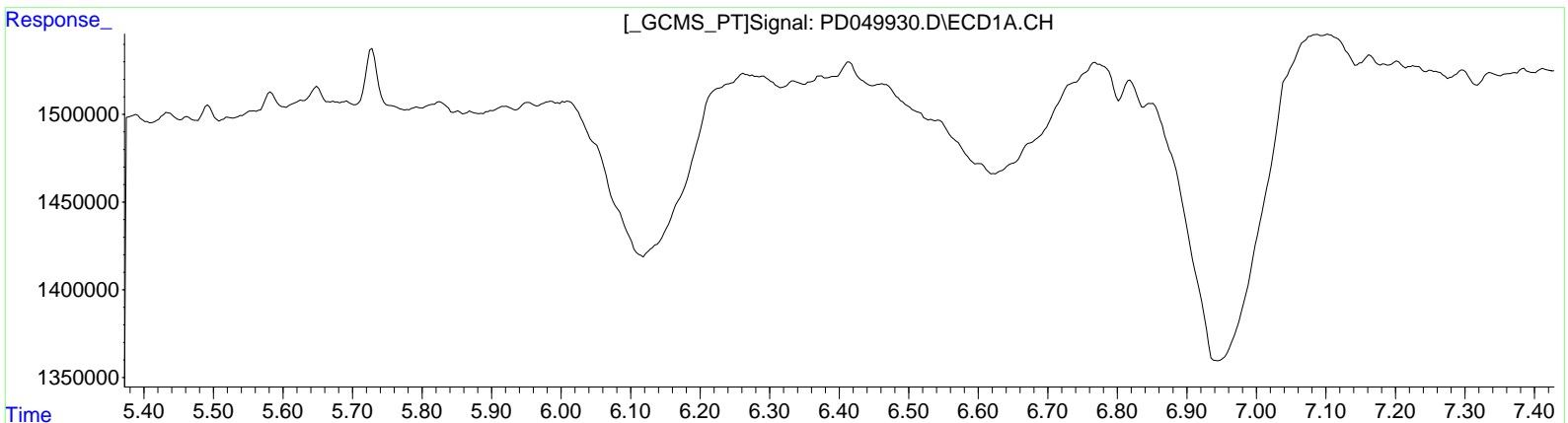
Data Path : Z:\pestpcbsrv\HPCHEM1\ECD_D\Data\PD102018\
Data File : PD049930.D
Signal(s) : Signal #1: ECD1A.CH Signal #2: ECD2B.CH
Acq On : 19 Oct 2018 19:14
Operator : AJ\SJ
Sample : J5567-05
Misc :
ALS Vial : 13 Sample Multiplier: 1

Instrument :
ECD_D
ClientSampled :
C0AH3

Manual Integrations
APPROVED
Sohil
10/25/2018 8:29:26 AM

Integration File signal 1: autoint1.e
Integration File signal 2: autoint2.e
Quant Time: Oct 24 09:51:46 2018
Quant Method : Z:\pestpcbsrv\HPCHEM1\ECD_D\Method\PD101918CLP.M
Quant Title : GC Extractables
QLast Update : Fri Oct 19 05:13:06 2018
Response via : Initial Calibration
Integrator: ChemStation 6890 Scale Mode: Large solvent peaks clipped

Volume Inj. : 1 µl
Signal #1 Phase : ZB-MR2 Signal #2 Phase: ZB-MR1
Signal #1 Info : 30M x 0.32mm x0.2 Signal #2 Info : 30M x 0.32mm x 0.50µm



(12) 4,4'-DDE (B)
0.000min 0.000 ng/ml
response 0

(12) 4,4'-DDE #2 (B)
6.413min 0.141 ng/ml
response 3746135

Quantitation Report (Qedit)

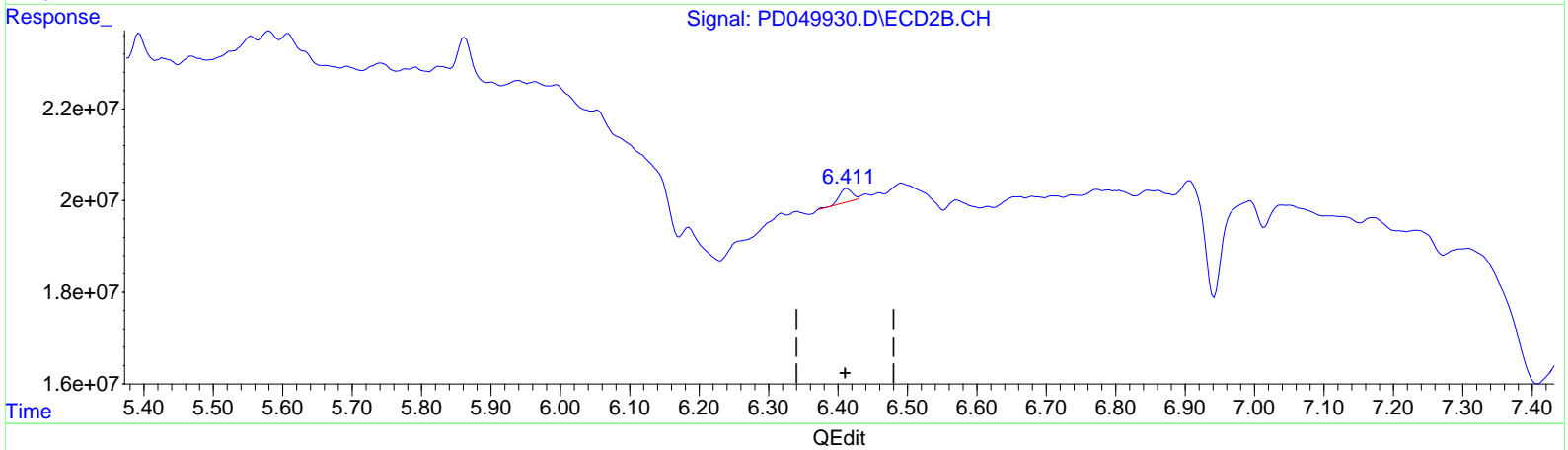
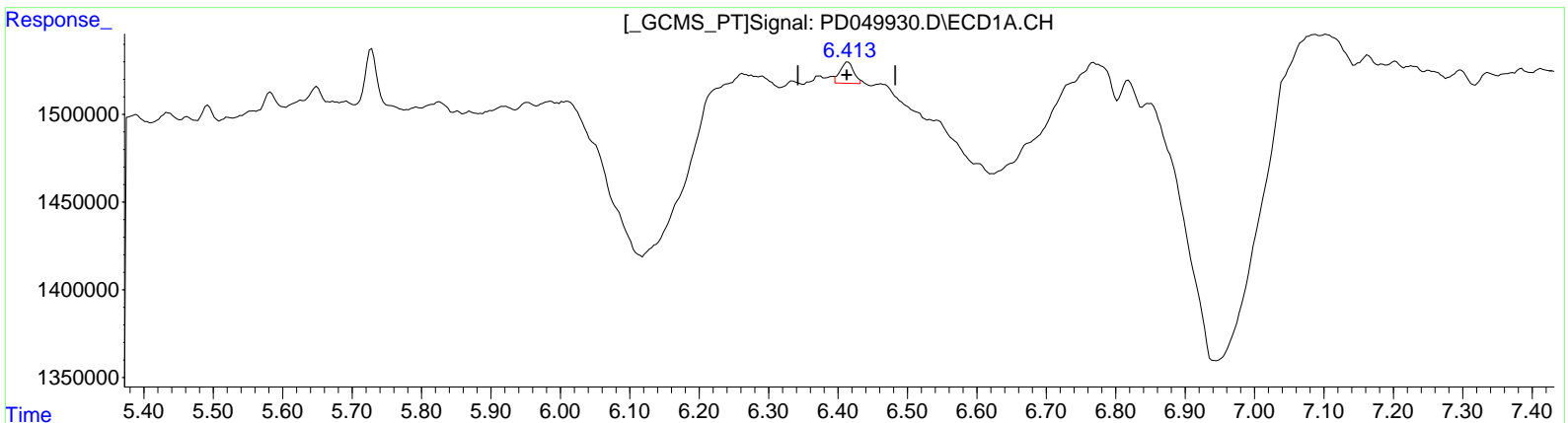
Data Path : Z:\pestpcbsrv\HPCHEM1\ECD_D\Data\PD102018\
Data File : PD049930.D
Signal(s) : Signal #1: ECD1A.CH Signal #2: ECD2B.CH
Acq On : 19 Oct 2018 19:14
Operator : AJ\SJ
Sample : J5567-05
Misc :
ALS Vial : 13 Sample Multiplier: 1

Instrument :
ECD_D
ClientSampled :
C0AH3

Manual Integrations
APPROVED
Sohil
10/25/2018 8:29:26 AM

Integration File signal 1: autoint1.e
Integration File signal 2: autoint2.e
Quant Time: Oct 24 09:51:46 2018
Quant Method : Z:\pestpcbsrv\HPCHEM1\ECD_D\Method\PD101918CLP.M
Quant Title : GC Extractables
QLast Update : Fri Oct 19 05:13:06 2018
Response via : Initial Calibration
Integrator: ChemStation 6890 Scale Mode: Large solvent peaks clipped

Volume Inj. : 1 µl
Signal #1 Phase : ZB-MR2 Signal #2 Phase: ZB-MR1
Signal #1 Info : 30M x 0.32mm x 0.2 Signal #2 Info : 30M x 0.32mm x 0.50µm



(12) 4,4'-DDE (B)
6.413min 0.222 ng/ml m
response 165109

(12) 4,4'-DDE #2 (B)
6.413min 0.141 ng/ml
response 3746135

Data Path : Z:\pestpcbsrv\HPCHEM1\ECD_D\Data\PD102018\
 Data File : PD049930.D
 Signal(s) : Signal #1: ECD1A.CH Signal #2: ECD2B.CH
 Acq On : 19 Oct 2018 19:14
 Operator : AJ\SJ
 Sample : J5567-05
 Misc :
 ALS Vial : 13 Sample Multiplier: 1

Instrument :
 ECD_D
Client Sampled :
 C0AH3

Integration File signal 1: autoint1.e
 Integration File signal 2: autoint2.e
 Quant Time: Oct 24 09:51:46 2018
 Quant Method : Z:\pestpcbsrv\HPCHEM1\ECD_D\Method\PD101918CLP.M
 Quant Title : GC Extractables
 QLast Update : Fri Oct 19 05:13:06 2018
 Response via : Initial Calibration
 Integrator: ChemStation 6890 Scale Mode: Large solvent peaks clipped

Manual Integrations
APPROVED

Sohil
 10/25/2018 8:29:26 AM

Volume Inj. : 1 µl
 Signal #1 Phase : ZB-MR2 Signal #2 Phase: ZB-MR1
 Signal #1 Info : 30M x 0.32mm x0.2 Signal #2 Info : 30M x 0.32mm x 0.50µm

Compound	RT#1	RT#2	Resp#1	Resp#2	ng/ml	ng/ml

System Monitoring Compounds						
1) SA Tetrachlo...	4.229	4.061	5753159	283.5E6	8.698	9.373
27) SA Decachlor...	9.013	9.171	11577475	355.1E6	17.328	19.982
Target Compounds						
12) B 4,4'-DDE	6.413	6.413	165109	3746135	0.222m	0.141 #

J SJ
10/26/18

(f)=RT Delta > 1/2 Window (#)=Amounts differ by > 25% (m)=manual int.