

Data Path : Z:\pestpcbsrv\HPCHEM1\ECD\_D\Data\PD102021\  
 Data File : PD066463.D  
 Signal(s) : Signal #1: ECD1A.ch Signal #2: ECD2B.ch  
 Acq On : 20 Oct 2021 20:08  
 Operator : AJ\MA  
 Sample : M4217-17  
 Misc :  
 ALS Vial : 28 Sample Multiplier: 1

Instrument :  
 ECD\_D  
 ClientSampleId :

Integration File signal 1: autoint1.e  
 Integration File signal 2: autoint2.e  
 Quant Time: Oct 21 04:24:20 2021  
 Quant Method : Z:\pestpcbsrv\HPCHEM1\ECD\_D\Method\PD101621CLP.M  
 Quant Title : GC Extractables  
 QLast Update : Tue Oct 19 10:18:55 2021  
 Response via : Initial Calibration  
 Integrator: ChemStation

Volume Inj. : 1 µl  
 Signal #1 Phase : ZB-MR2 Signal #2 Phase: ZB-MR1  
 Signal #1 Info : 30M x 0.32mm x0.2 Signal #2 Info : 30M x 0.32mm x 0.50µm

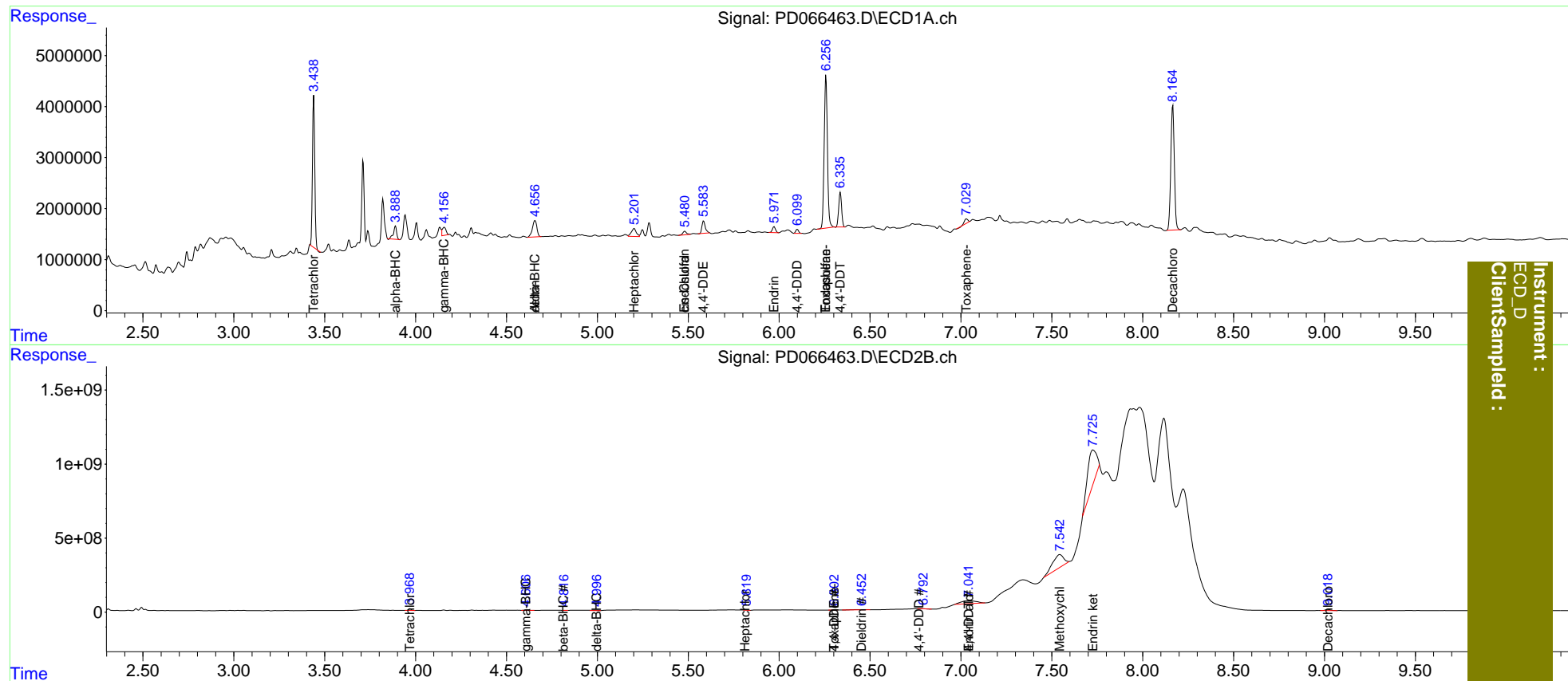
	Compound	RT#1	RT#2	Resp#1	Resp#2	ng/ml	ng/ml
-----							
System Monitoring Compounds							
1)	SA Tetrachlo...	3.440	3.969	25990318	122.3E6	12.728	13.722
2)	SA Decachlor...	8.166	9.019	32990617	141.5E6	24.265	29.790
Target Compounds							
2)	A alpha-BHC	3.889	4.367	3112928	-2284237	0.998	N.D. #
3)	MA gamma-BHC...	4.158	4.608f	2287444	15694520	0.741	1.422 #
5)	MB Aldrin	4.657f	0.000	5540717	0	1.802	N.D. #
6)	B beta-BHC	0.000	4.814	0	2600320	N.D.	0.499
7)	B delta-BHC	4.657f	4.995f	5540717	58074497	1.921	6.001 #
8)	B Heptachlo...	5.203f	5.812	2936535	12317768	1.085	1.534 #
9)	A Endosulfan I	5.481	6.196	1052130	15987	0.416	<MDL #
11)	B cis-Chlor...	5.481f	6.196f	1052130	15987	0.392	<MDL #
12)	B 4,4'-DDE	5.585	6.304	3150086	7909317	1.258	0.995
13)	MA Dieldrin	0.000	6.455	0	79705107	N.D.	9.429
14)	MA Endrin	5.973	0.000	1406046	0	0.591	N.D. #
15)	B Endosulfa...	6.258	6.901	37240283	-40683590	16.579	N.D. #
16)	A 4,4'-DDD	6.100	6.769	841167	25532259	0.405	3.826 #
17)	MA 4,4'-DDT	6.337	7.043f	7606360	1165.0E6	3.822	177.643 #
18)	B Endrin al...	0.000	7.043	0	1165.0E6	N.D.	219.776
20)	A Methoxychlor	0.000	7.544	0	3817.2E6	N.D.	1175.361
21)	B Endrin ke...	0.000	7.725	0	1633.4E6	N.D.	227.747
22)	Toxaphene-1	0.000	6.304	0	7909317	N.D.	214.643
24)	Toxaphene-3	6.258	0.000	37240283	0	936.266	N.D. #
26)	Toxaphene-5	7.030	0.000	1073994	0	25.803	N.D. #

(f)=RT Delta > 1/2 Window (#)=Amounts differ by > 25% (m)=manual int.

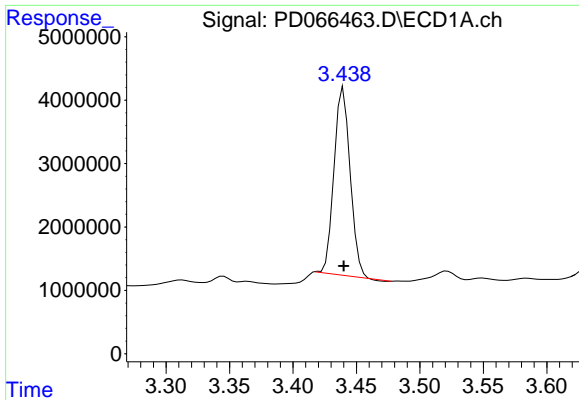
Data Path : Z:\pestpcbsrv\HPCHEM1\ECD\_D\Data\PD102021\  
 Data File : PD066463.D  
 Signal(s) : Signal #1: ECD1A.ch Signal #2: ECD2B.ch  
 Acq On : 20 Oct 2021 20:08  
 Operator : AJ\MA  
 Sample : M4217-17  
 Misc :  
 ALS Vial : 28 Sample Multiplier: 1

Integration File signal 1: autoint1.e  
 Integration File signal 2: autoint2.e  
 Quant Time: Oct 21 04:24:20 2021  
 Quant Method : Z:\pestpcbsrv\HPCHEM1\ECD\_D\Method\PD101621CLP.M  
 Quant Title : GC Extractables  
 QLast Update : Tue Oct 19 10:18:55 2021  
 Response via : Initial Calibration  
 Integrator: ChemStation

Volume Inj. : 1 µl  
 Signal #1 Phase : ZB-MR2 Signal #2 Phase: ZB-MR1  
 Signal #1 Info : 30M x 0.32mm x0.2 Signal #2 Info : 30M x 0.32mm x 0.50µm

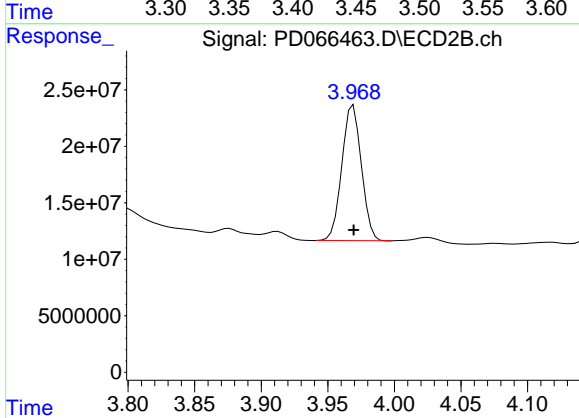


Instrument : ECD\_D  
 Client/Sample : M4217-17

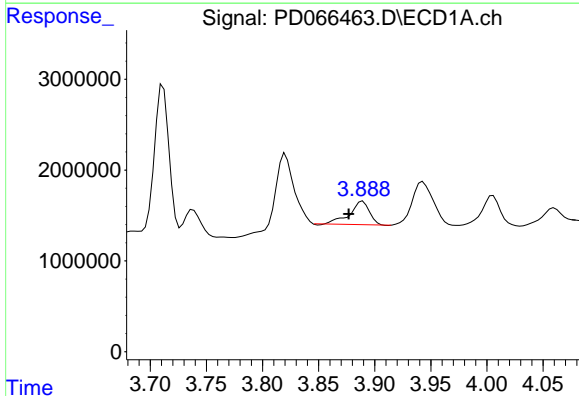


#1 Tetrachloro-m-xylene  
 R.T.: 3.440 min  
 Delta R.T.: 0.000 min  
 Response: 25990318  
 Conc: 12.73 ng/ml

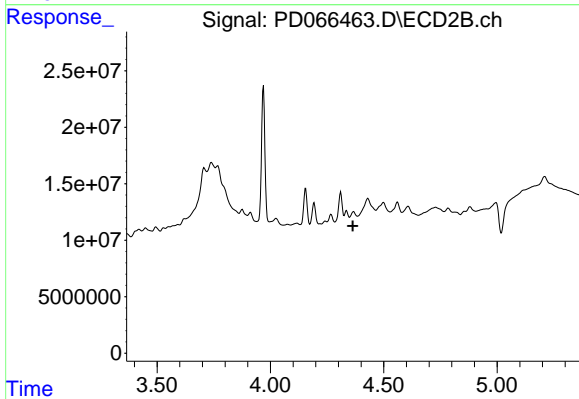
Instrument :  
 ECD\_D  
 ClientSampleId :



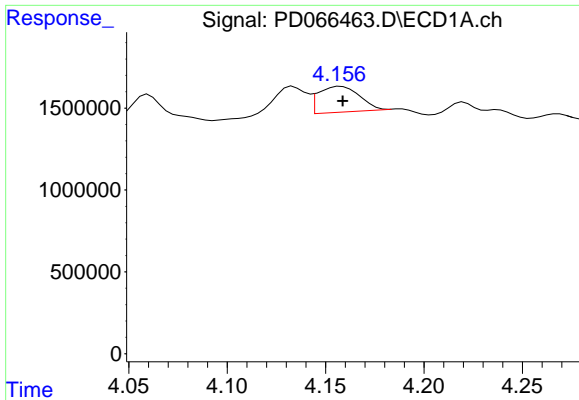
#1 Tetrachloro-m-xylene  
 R.T.: 3.969 min  
 Delta R.T.: 0.000 min  
 Response: 122287589  
 Conc: 13.72 ng/ml



#2 alpha-BHC  
 R.T.: 3.889 min  
 Delta R.T.: 0.012 min  
 Response: 3112928  
 Conc: 1.00 ng/ml

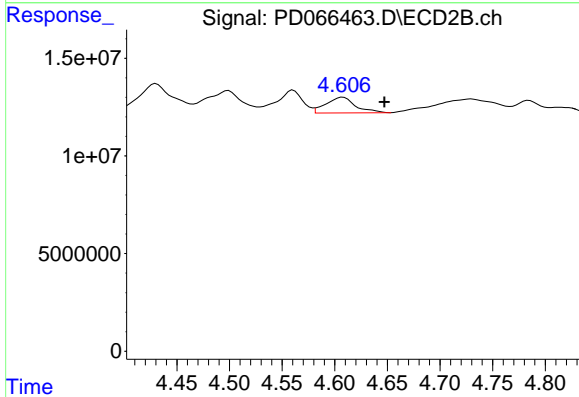


#2 alpha-BHC  
 R.T.: 4.367 min  
 Delta R.T.: 0.004 min  
 Response: -2284237  
 Conc: N.D.

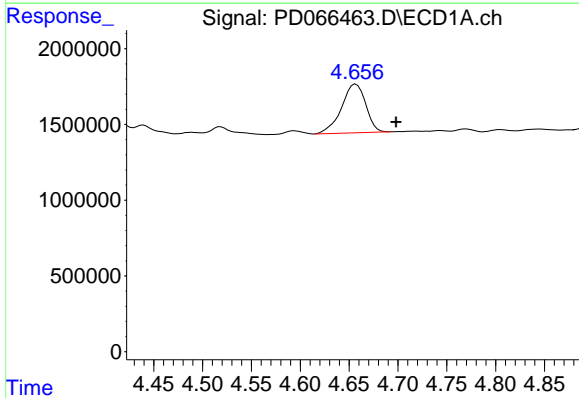


#3 gamma-BHC (Lindane)  
 R.T.: 4.158 min  
 Delta R.T.: 0.000 min  
 Response: 2287444  
 Conc: 0.74 ng/ml

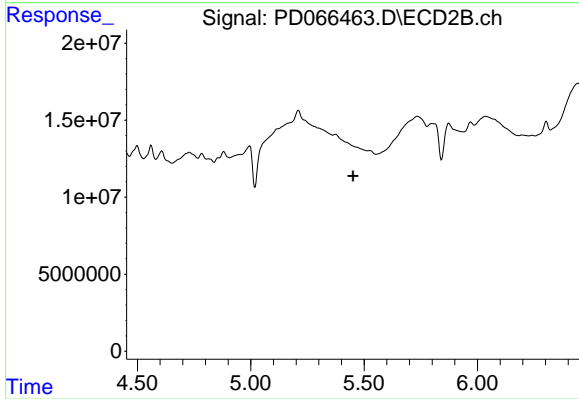
Instrument :  
 ECD\_D  
 ClientSampleId :



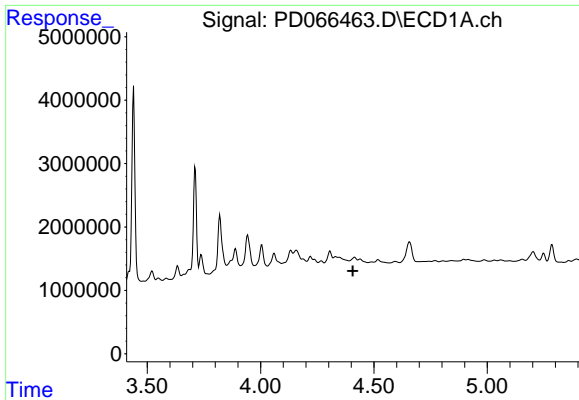
#3 gamma-BHC (Lindane)  
 R.T.: 4.608 min  
 Delta R.T.: -0.040 min  
 Response: 15694520  
 Conc: 1.42 ng/ml



#5 Aldrin  
 R.T.: 4.657 min  
 Delta R.T.: -0.041 min  
 Response: 5540717  
 Conc: 1.80 ng/ml



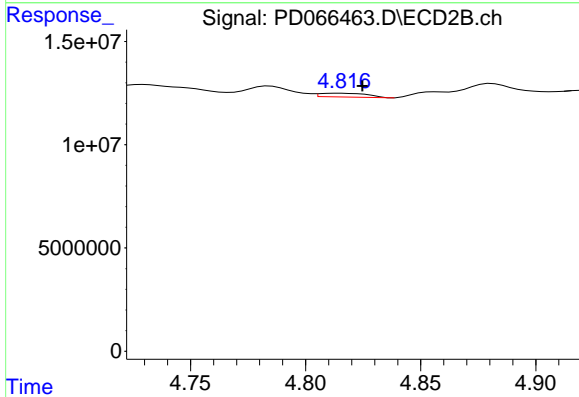
#5 Aldrin  
 R.T.: 0.000 min  
 Exp R.T.: 5.452 min  
 Response: 0  
 Conc: N.D.



#6 beta-BHC

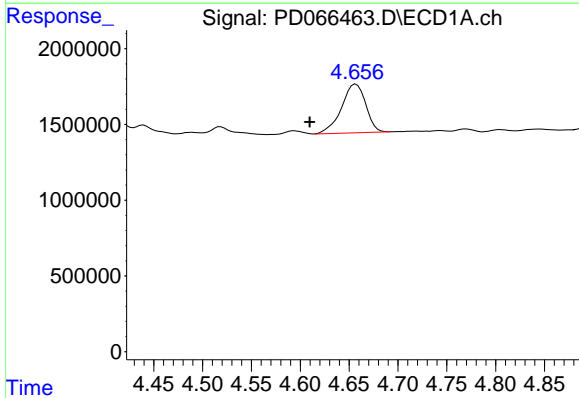
R.T.: 0.000 min  
 Exp R.T.: 4.408 min  
 Response: 0  
 Conc: N.D.

Instrument :  
 ECD\_D  
 ClientSampleId :



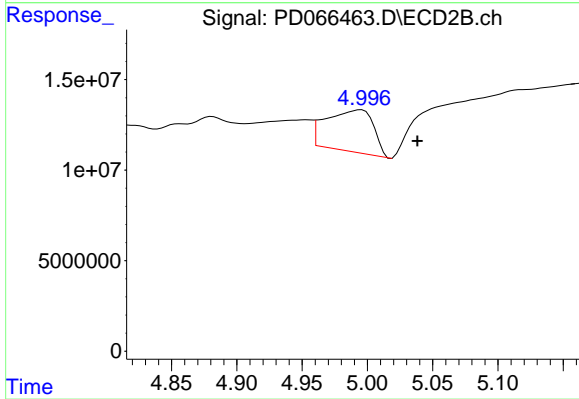
#6 beta-BHC

R.T.: 4.814 min  
 Delta R.T.: -0.011 min  
 Response: 2600320  
 Conc: 0.50 ng/ml



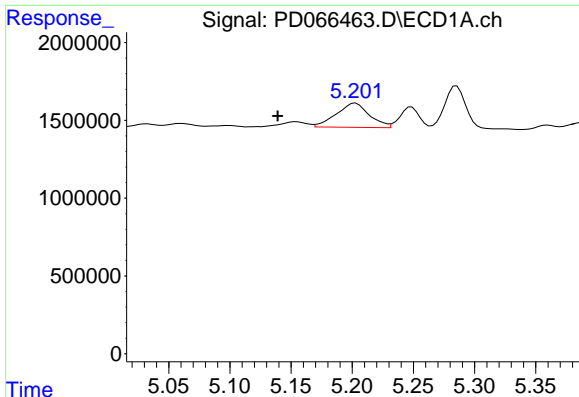
#7 delta-BHC

R.T.: 4.657 min  
 Delta R.T.: 0.047 min  
 Response: 5540717  
 Conc: 1.92 ng/ml



#7 delta-BHC

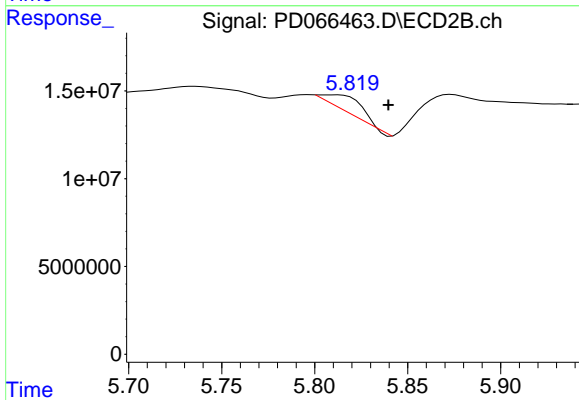
R.T.: 4.995 min  
 Delta R.T.: -0.043 min  
 Response: 58074497  
 Conc: 6.00 ng/ml



#8 Heptachlor epoxide

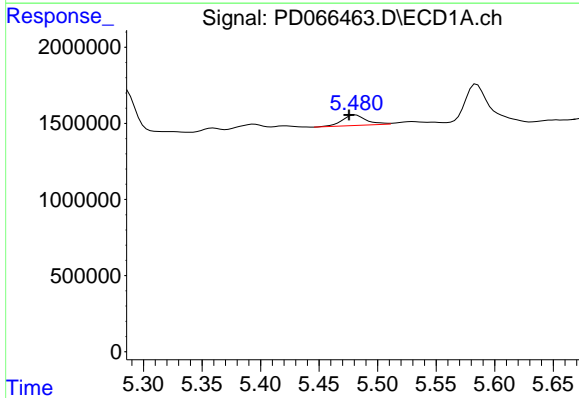
R.T.: 5.203 min  
 Delta R.T.: 0.064 min  
 Response: 2936535  
 Conc: 1.09 ng/ml

Instrument :  
 ECD\_D  
 ClientSampleId :



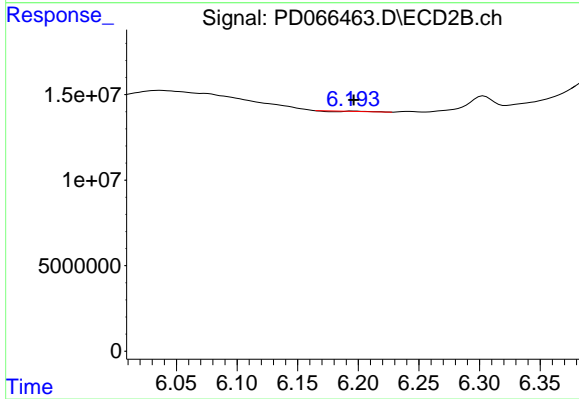
#8 Heptachlor epoxide

R.T.: 5.812 min  
 Delta R.T.: -0.027 min  
 Response: 12317768  
 Conc: 1.53 ng/ml



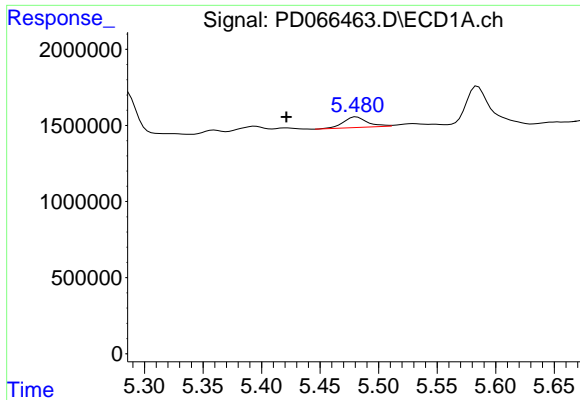
#9 Endosulfan I

R.T.: 5.481 min  
 Delta R.T.: 0.005 min  
 Response: 1052130  
 Conc: 0.42 ng/ml



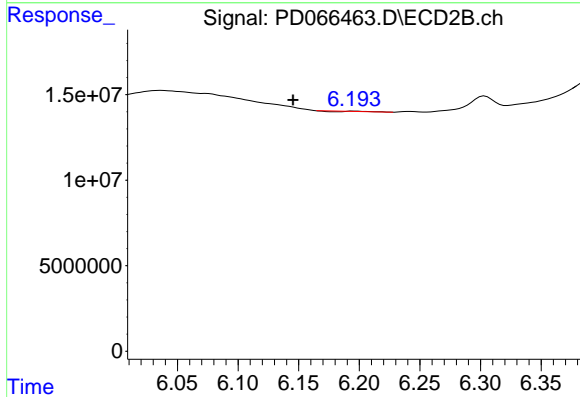
#9 Endosulfan I

R.T.: 6.196 min  
 Delta R.T.: 0.000 min  
 Response: 15987  
 Conc: N.D.

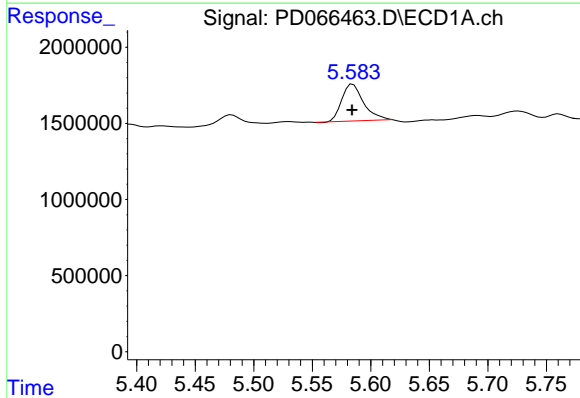


#11 cis-Chlordane  
 R.T.: 5.481 min  
 Delta R.T.: 0.060 min  
 Response: 1052130  
 Conc: 0.39 ng/ml

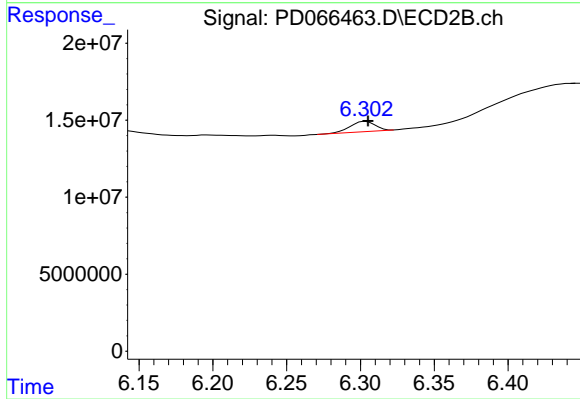
Instrument :  
 ECD\_D  
 ClientSampleId :



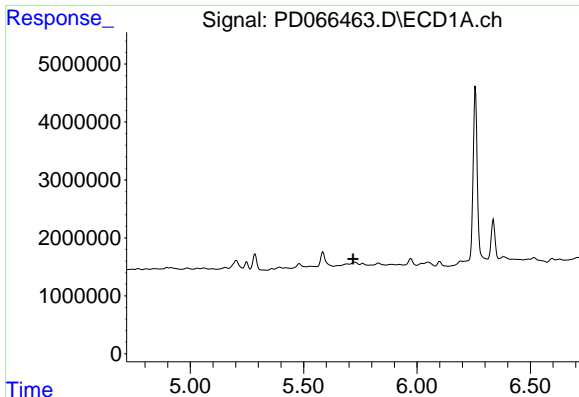
#11 cis-Chlordane  
 R.T.: 6.196 min  
 Delta R.T.: 0.050 min  
 Response: 15987  
 Conc: N.D.



#12 4,4'-DDE  
 R.T.: 5.585 min  
 Delta R.T.: 0.000 min  
 Response: 3150086  
 Conc: 1.26 ng/ml



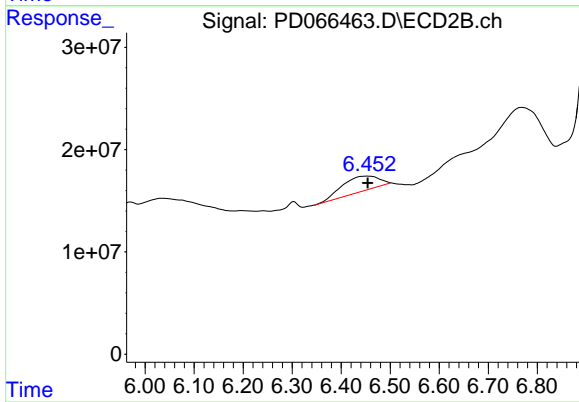
#12 4,4'-DDE  
 R.T.: 6.304 min  
 Delta R.T.: -0.001 min  
 Response: 7909317  
 Conc: 1.00 ng/ml



#13 Dieldrin

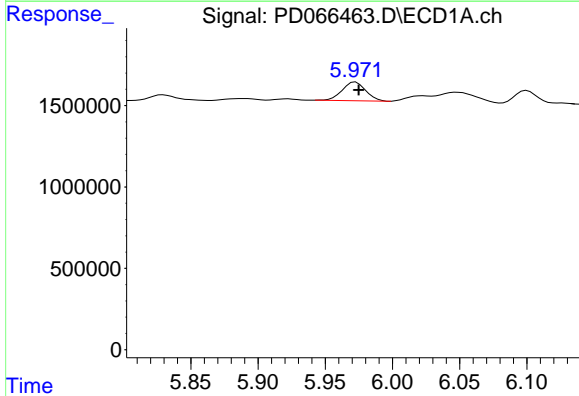
R.T.: 0.000 min  
 Exp R.T.: 5.718 min  
 Response: 0  
 Conc: N.D.

Instrument :  
 ECD\_D  
 ClientSampleId :



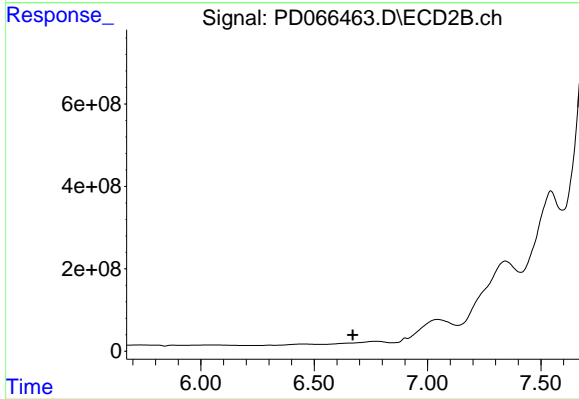
#13 Dieldrin

R.T.: 6.455 min  
 Delta R.T.: 0.000 min  
 Response: 79705107  
 Conc: 9.43 ng/ml



#14 Endrin

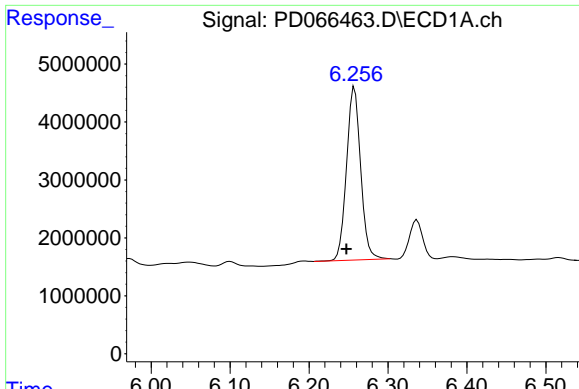
R.T.: 5.973 min  
 Delta R.T.: -0.002 min  
 Response: 1406046  
 Conc: 0.59 ng/ml



#14 Endrin

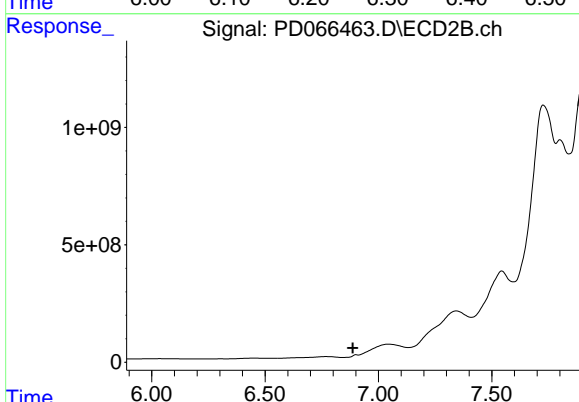
R.T.: 0.000 min  
 Exp R.T.: 6.671 min  
 Response: 0  
 Conc: N.D.



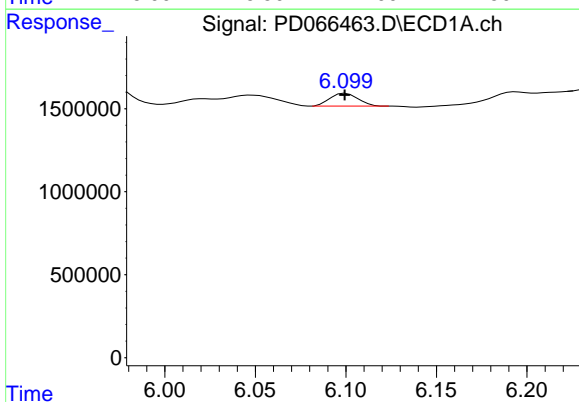


#15 Endosulfan II  
 R.T.: 6.258 min  
 Delta R.T.: 0.010 min  
 Response: 37240283  
 Conc: 16.58 ng/ml

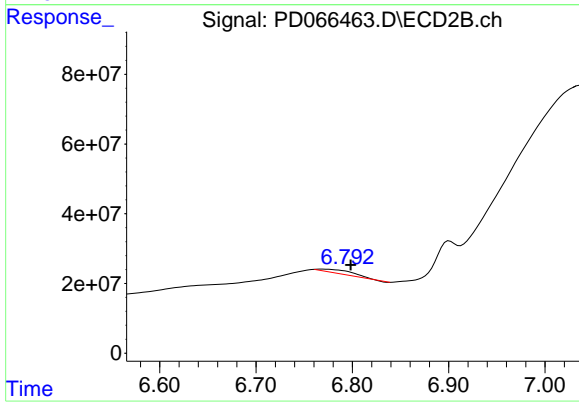
Instrument :  
 ECD\_D  
 ClientSampleId :



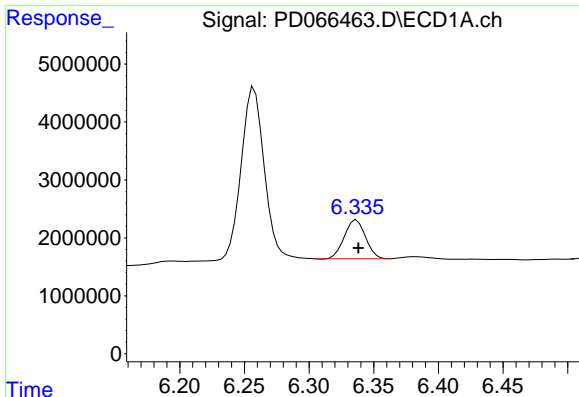
#15 Endosulfan II  
 R.T.: 6.901 min  
 Delta R.T.: 0.014 min  
 Response: -40683590  
 Conc: N.D.



#16 4,4'-DDD  
 R.T.: 6.100 min  
 Delta R.T.: 0.000 min  
 Response: 841167  
 Conc: 0.41 ng/ml



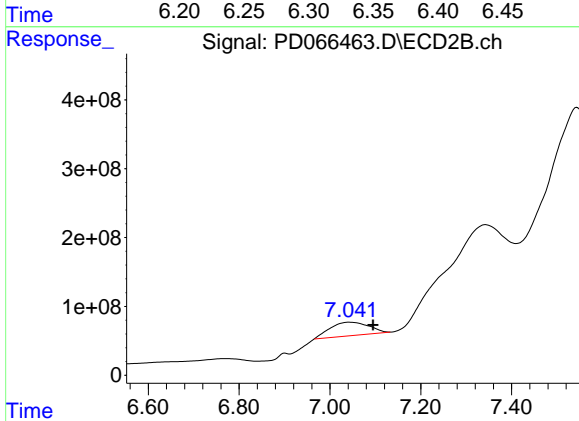
#16 4,4'-DDD  
 R.T.: 6.769 min  
 Delta R.T.: -0.029 min  
 Response: 25532259  
 Conc: 3.83 ng/ml



#17 4,4'-DDT

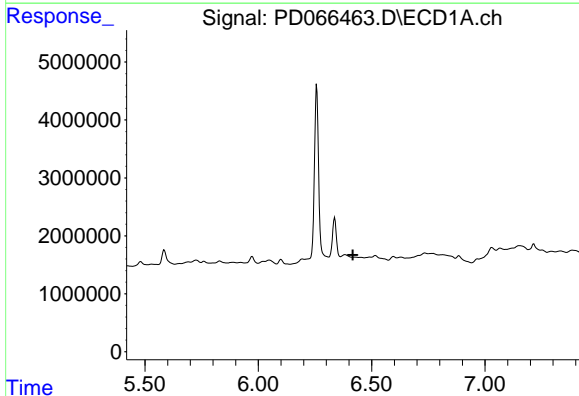
R.T.: 6.337 min  
 Delta R.T.: -0.001 min  
 Response: 7606360  
 Conc: 3.82 ng/ml

Instrument :  
 ECD\_D  
 ClientSampleId :



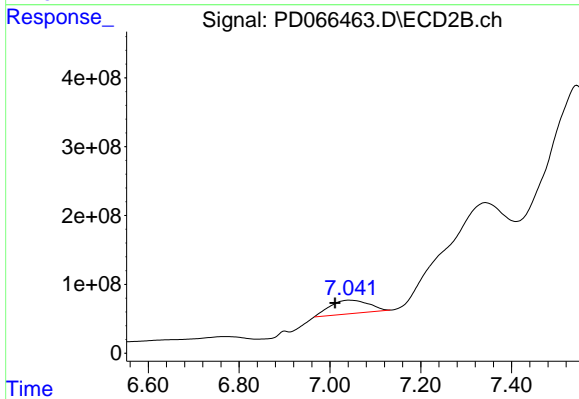
#17 4,4'-DDT

R.T.: 7.043 min  
 Delta R.T.: -0.052 min  
 Response: 1165034155  
 Conc: 177.64 ng/ml



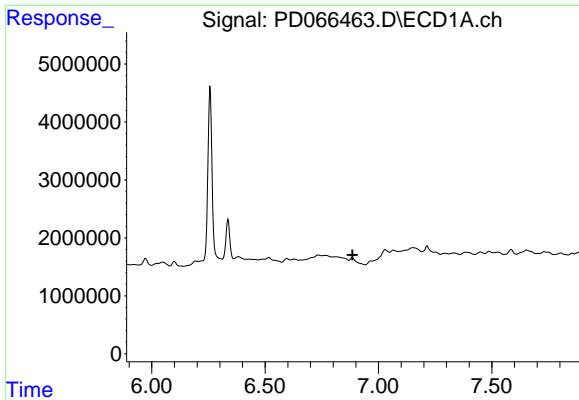
#18 Endrin aldehyde

R.T.: 0.000 min  
 Exp R.T. : 6.416 min  
 Response: 0  
 Conc: N.D.



#18 Endrin aldehyde

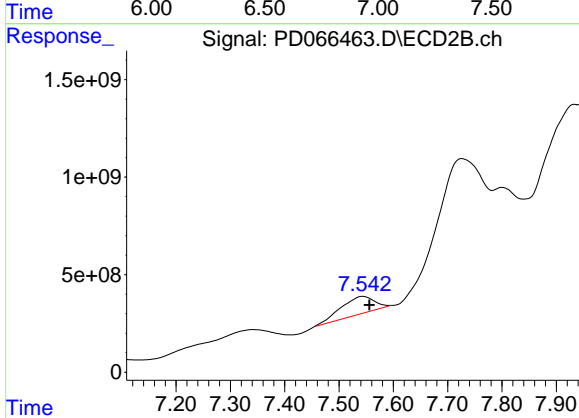
R.T.: 7.043 min  
 Delta R.T.: 0.032 min  
 Response: 1165034155  
 Conc: 219.78 ng/ml



#20 Methoxychlor

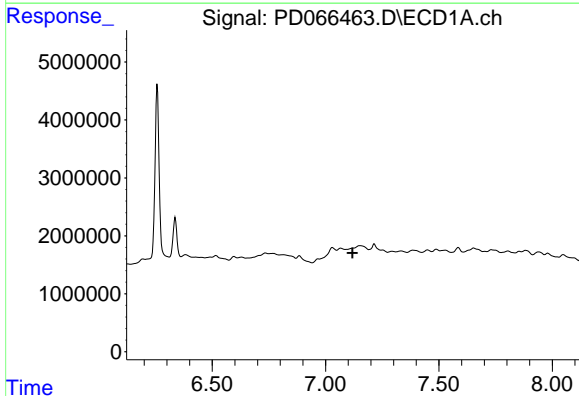
R.T.: 0.000 min  
 Exp R.T.: 6.886 min  
 Response: 0  
 Conc: N.D.

Instrument :  
 ECD\_D  
 ClientSampleId :



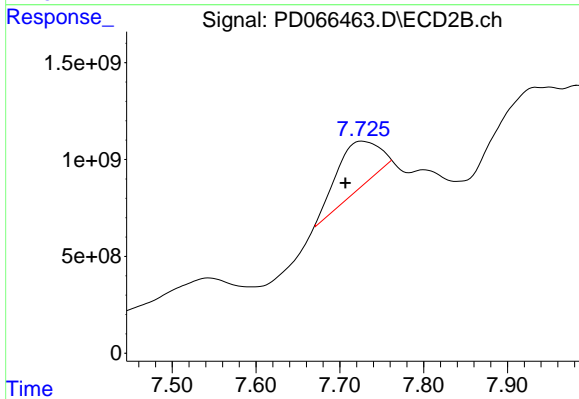
#20 Methoxychlor

R.T.: 7.544 min  
 Delta R.T.: -0.013 min  
 Response: 3817188802  
 Conc: 1175.36 ng/ml



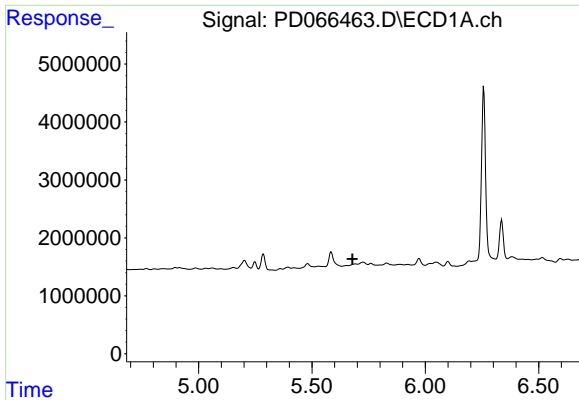
#21 Endrin ketone

R.T.: 0.000 min  
 Exp R.T.: 7.119 min  
 Response: 0  
 Conc: N.D.



#21 Endrin ketone

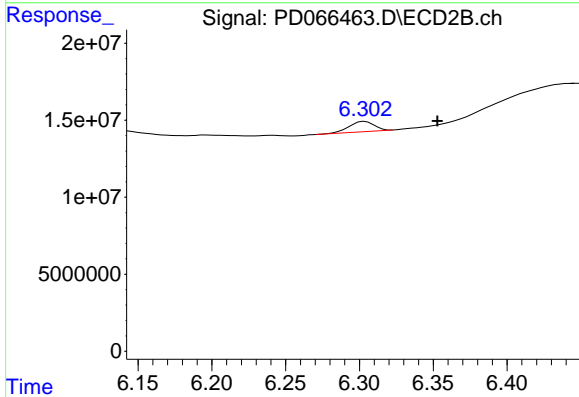
R.T.: 7.725 min  
 Delta R.T.: 0.018 min  
 Response: 1633449155  
 Conc: 227.75 ng/ml



#22 Toxaphene-1

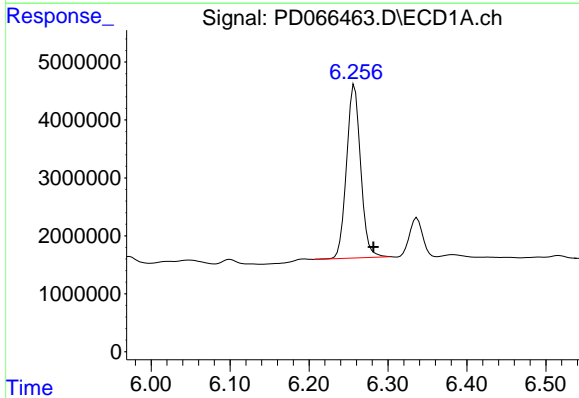
R.T.: 0.000 min  
 Exp R.T.: 5.679 min  
 Response: 0  
 Conc: N.D.

Instrument :  
 ECD\_D  
 ClientSampleId :



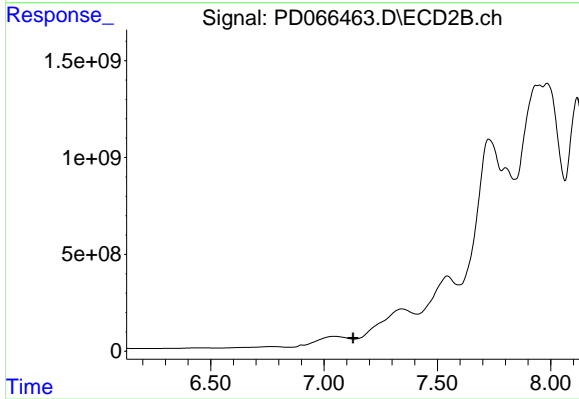
#22 Toxaphene-1

R.T.: 6.304 min  
 Delta R.T.: -0.049 min  
 Response: 7909317  
 Conc: 214.64 ng/ml



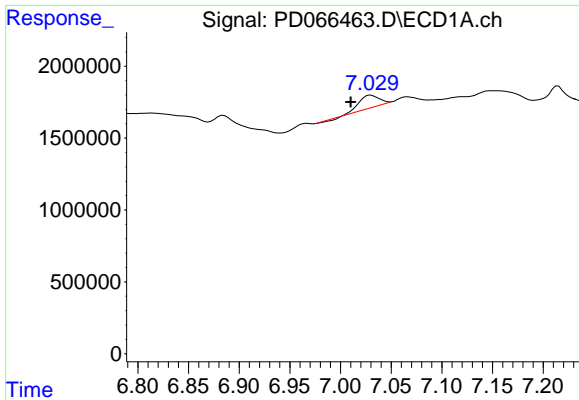
#24 Toxaphene-3

R.T.: 6.258 min  
 Delta R.T.: -0.024 min  
 Response: 37240283  
 Conc: 936.27 ng/ml



#24 Toxaphene-3

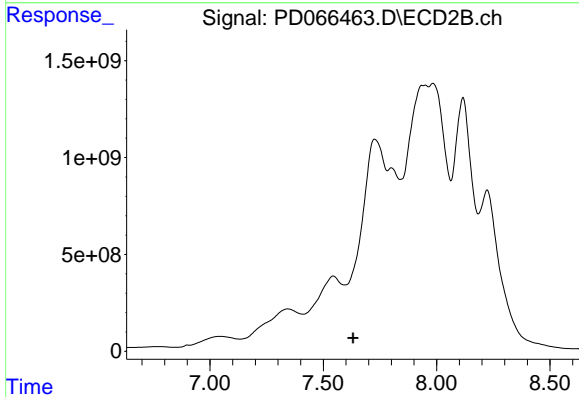
R.T.: 0.000 min  
 Exp R.T.: 7.129 min  
 Response: 0  
 Conc: N.D.



#26 Toxaphene-5

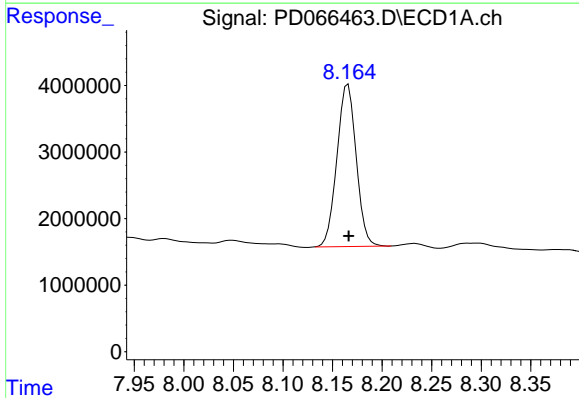
R.T.: 7.030 min  
 Delta R.T.: 0.020 min  
 Response: 1073994  
 Conc: 25.80 ng/ml

Instrument :  
 ECD\_D  
 ClientSampleId :



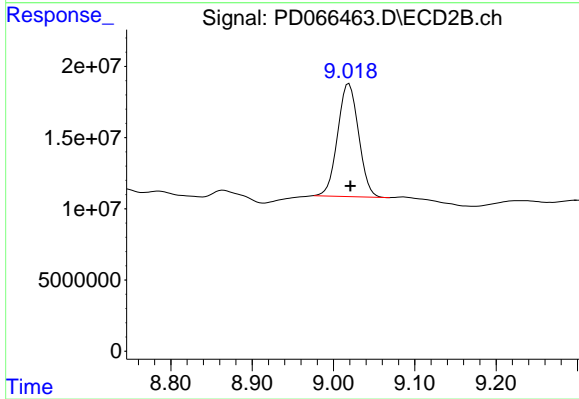
#26 Toxaphene-5

R.T.: 0.000 min  
 Exp R.T. : 7.632 min  
 Response: 0  
 Conc: N.D.



#27 Decachlorobiphenyl

R.T.: 8.166 min  
 Delta R.T.: 0.000 min  
 Response: 32990617  
 Conc: 24.27 ng/ml



#27 Decachlorobiphenyl

R.T.: 9.019 min  
 Delta R.T.: -0.002 min  
 Response: 141468645  
 Conc: 29.79 ng/ml