

Data Path : Z:\pestpcbsrv\HPCHEM1\ECD_D\Data\PD102021\
 Data File : PD066459.D
 Signal(s) : Signal #1: ECD1A.ch Signal #2: ECD2B.ch
 Acq On : 20 Oct 2021 19:13
 Operator : AJ\MA
 Sample : M4217-12
 Misc :
 ALS Vial : 24 Sample Multiplier: 1

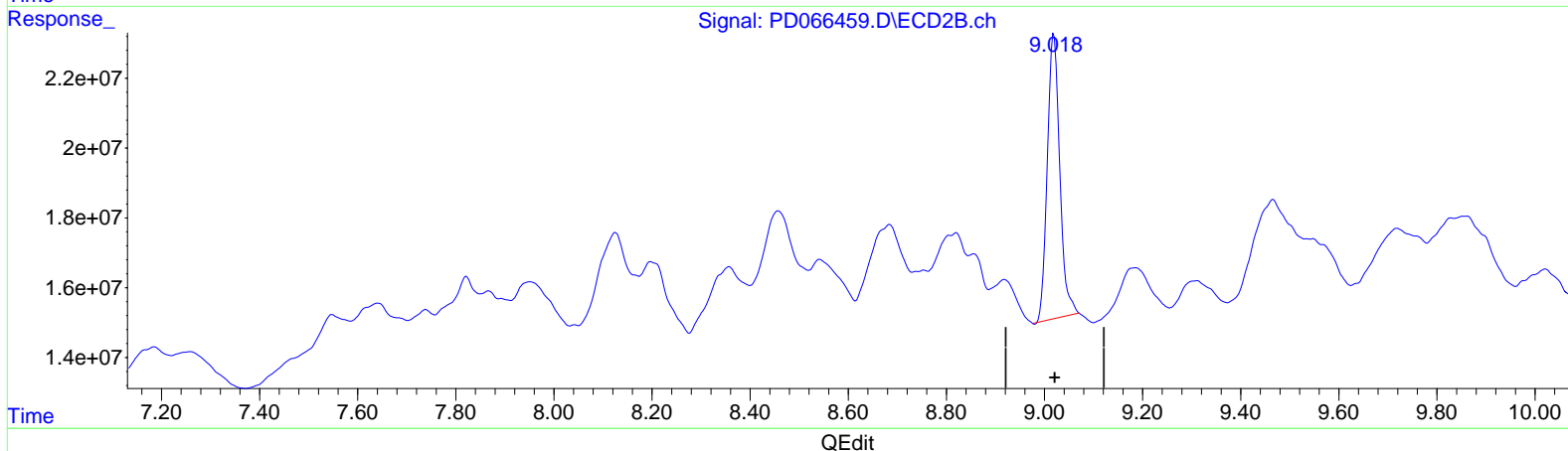
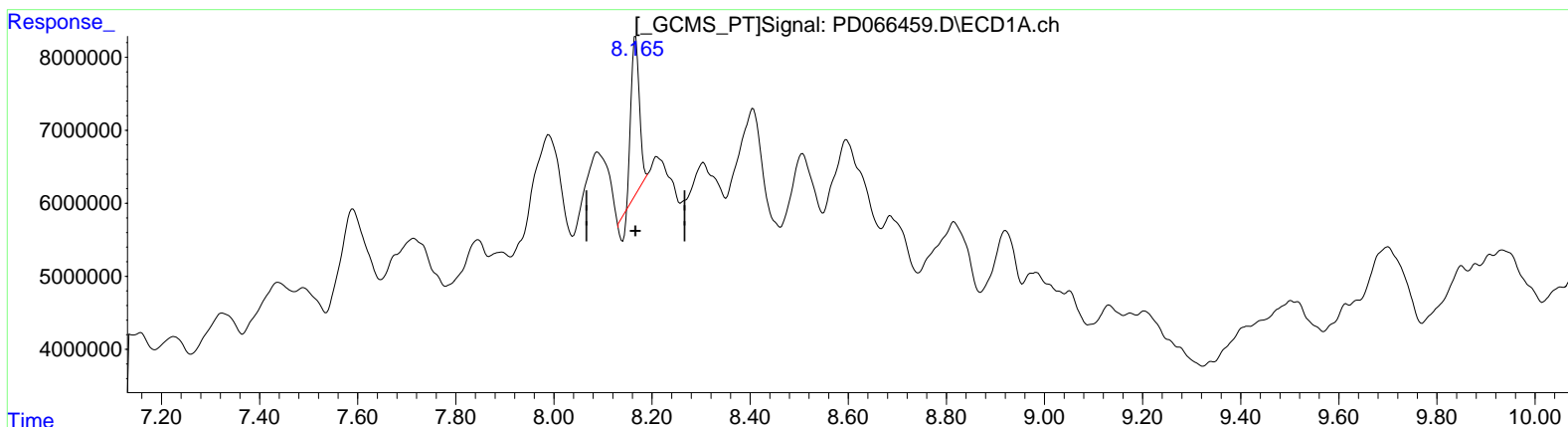
Instrument :
 ECD_D
 ClientSampleId :
 JDGE6

Manual Integrations APPROVED

Reviewed By : Abdul Mirza 10/21/2021
 Supervised By : mohammad ahmed 10/21/2021

Integration File signal 1: autoint1.e
 Integration File signal 2: autoint2.e
 Quant Time: Oct 21 04:23:45 2021
 Quant Method : Z:\pestpcbsrv\HPCHEM1\ECD_D\Method\PD101621CLP.M
 Quant Title : GC Extractables
 QLast Update : Tue Oct 19 10:18:55 2021
 Response via : Initial Calibration
 Integrator: ChemStation

Volume Inj. : 1 µl
 Signal #1 Phase : ZB-MR2 Signal #2 Phase: ZB-MR1
 Signal #1 Info : 30M x 0.32mm x 0.2 Signal #2 Info : 30M x 0.32mm x 0.50µm



(27) Decachlorobiphenyl (SA)

8.167min 16.933 ng/ml
 response 23022314

(27) Decachlorobiphenyl #2 (SA)

9.019min 30.383 ng/ml
 response 144283963

Data Path : Z:\pestpcbsrv\HPCHEM1\ECD_D\Data\PD102021\
 Data File : PD066459.D
 Signal(s) : Signal #1: ECD1A.ch Signal #2: ECD2B.ch
 Acq On : 20 Oct 2021 19:13
 Operator : AJ\MA
 Sample : M4217-12
 Misc :
 ALS Vial : 24 Sample Multiplier: 1

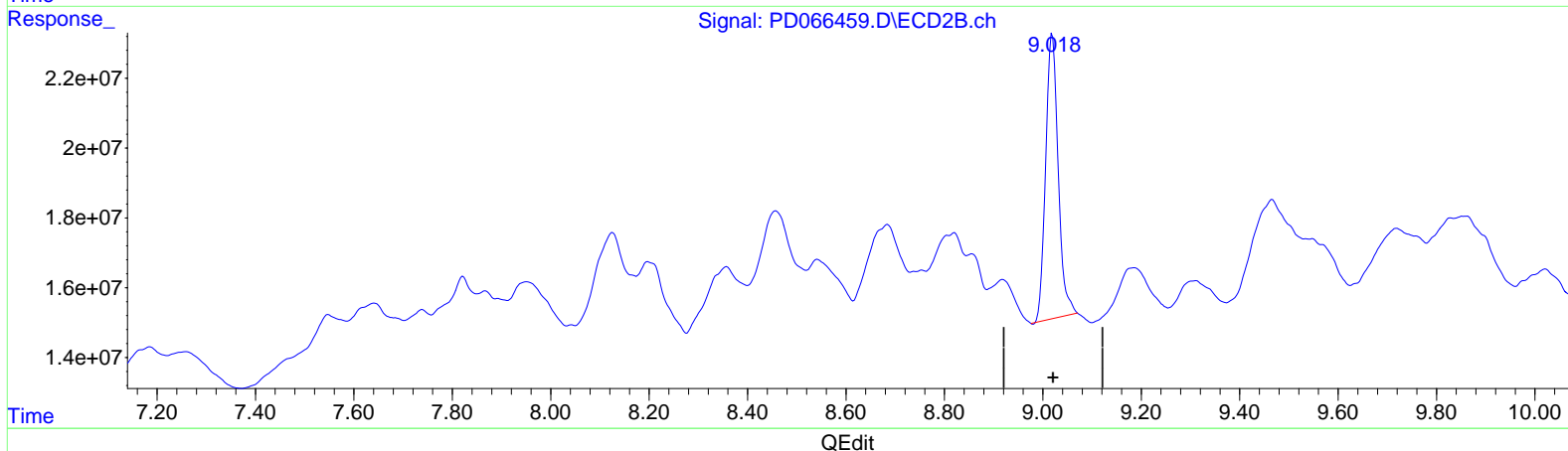
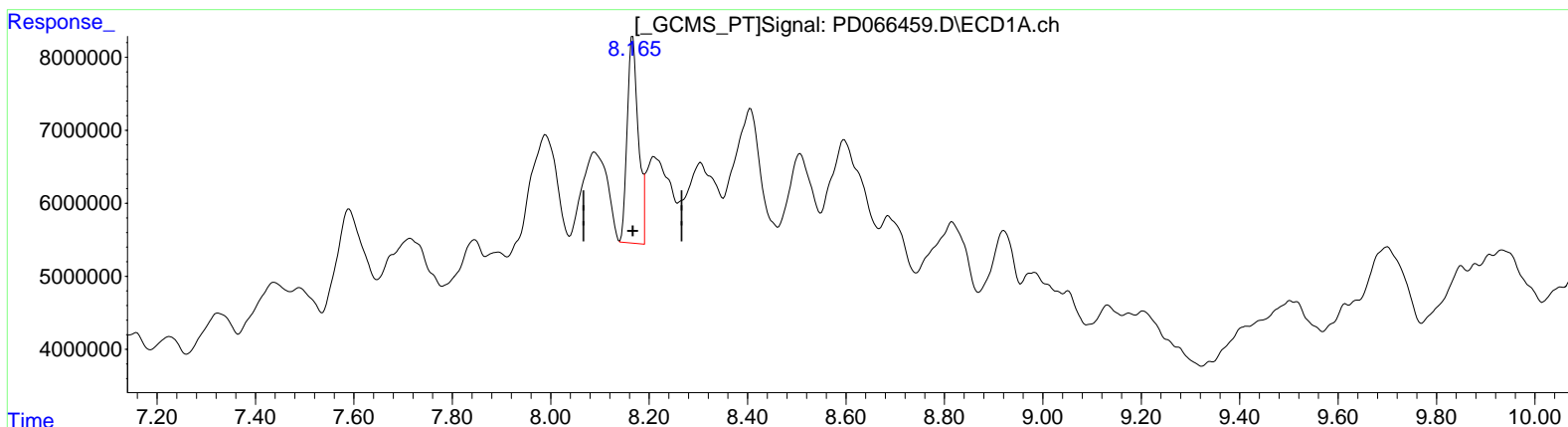
Instrument :
 ECD_D
 ClientSampleId :
 JDGE6

Manual Integrations APPROVED

Reviewed By : Abdul Mirza 10/21/2021
 Supervised By : mohammad ahmed 10/21/2021

Integration File signal 1: autoint1.e
 Integration File signal 2: autoint2.e
 Quant Time: Oct 21 04:23:45 2021
 Quant Method : Z:\pestpcbsrv\HPCHEM1\ECD_D\Method\PD101621CLP.M
 Quant Title : GC Extractables
 QLast Update : Tue Oct 19 10:18:55 2021
 Response via : Initial Calibration
 Integrator: ChemStation

Volume Inj. : 1 µl
 Signal #1 Phase : ZB-MR2 Signal #2 Phase: ZB-MR1
 Signal #1 Info : 30M x 0.32mm x 0.2 Signal #2 Info : 30M x 0.32mm x 0.50µm



(27) Decachlorobiphenyl (SA)

8.165min 33.995 ng/ml m
 response 46218731

(27) Decachlorobiphenyl #2 (SA)

9.019min 30.383 ng/ml
 response 144283963

Quantitation Report (QT Reviewed)

Data Path : Z:\pestpcbsrv\HPCHEM1\ECD_D\Data\PD102021\
 Data File : PD066459.D
 Signal(s) : Signal #1: ECD1A.ch Signal #2: ECD2B.ch
 Acq On : 20 Oct 2021 19:13
 Operator : AJ\MA
 Sample : M4217-12
 Misc :
 ALS Vial : 24 Sample Multiplier: 1

Instrument :
 ECD_D
 Client Sampled :
 JDGE6

Manual Integrations APPROVED

Reviewed By : Abdul Mirza 10/21/2021
 Supervised By : mohammad ahmed 10/21/2021

Integration File signal 1: autoint1.e
 Integration File signal 2: autoint2.e
 Quant Time: Oct 21 04:23:45 2021
 Quant Method : Z:\pestpcbsrv\HPCHEM1\ECD_D\Method\PD101621CLP.M
 Quant Title : GC Extractables
 QLast Update : Tue Oct 19 10:18:55 2021
 Response via : Initial Calibration
 Integrator: ChemStation

Volume Inj. : 1 µl
 Signal #1 Phase : ZB-MR2
 Signal #2 Phase: ZB-MR1
 Signal #1 Info : 30M x 0.32mm x 0.2
 Signal #2 Info : 30M x 0.32mm x 0.50µm

Compound	RT#1	RT#2	Resp#1	Resp#2	ng/ml	ng/ml

System Monitoring Compounds						
1) SA Tetrachlo...	3.440	3.969	27633104	124.5E6	13.533	13.970
27) SA Decachlor...	8.165	9.019	46218731	144.3E6	33.995m	30.383

Handwritten signature and date:
 10/21/21

Target Compounds

(f)=RT Delta > 1/2 Window (#)=Amounts differ by > 25% (m)=manual int.