

Data Path : Z:\pestpcbsrv\HPCHEM1\ECD\_D\Data\PD102022\  
 Data File : PD072530.D  
 Signal(s) : Signal #1: ECD1A.ch Signal #2: ECD2B.ch  
 Acq On : 20 Oct 2022 17:21  
 Operator : AR\AJ  
 Sample : I.BLK  
 Misc :  
 ALS Vial : 2 Sample Multiplier: 1

Instrument :  
 ECD\_D  
 ClientSampleId :

Integration File signal 1: autoint1.e  
 Integration File signal 2: autoint2.e  
 Quant Time: Oct 21 04:09:25 2022  
 Quant Method : Z:\pestpcbsrv\HPCHEM1\ECD\_D\Method\PD102022.M  
 Quant Title : GC Extractables  
 QLast Update : Fri Oct 21 02:43:40 2022  
 Response via : Initial Calibration  
 Integrator: ChemStation

Volume Inj. : 2 µl  
 Signal #1 Phase : ZB-MR2 Signal #2 Phase: ZB-MR1  
 Signal #1 Info : 30M x 0.32mm x0.2 Signal #2 Info : 30M x 0.32mm x 0.50µm

Compound	RT#1	RT#2	Resp#1	Resp#2	ng/ml	ng/ml
System Monitoring Compounds						
1) SA Tetrachlo...	2.706	3.466	46966566	653.4E6	18.850	19.652
28) SA Decachlor...	7.844	8.927	44566484	180.7E6	19.801	20.089
Target Compounds						
2) A alpha-BHC	0.000	3.944	0	4440181	N.D.	0.097 #
3) MA gamma-BHC...	0.000	4.268	0	3076581	N.D.	0.084 #
4) MA Heptachlor	3.848f	4.823	428940	25231628	0.120	0.966 #
5) MB Aldrin	4.171f	5.171	1074578	63230	0.311	0.003 #
8) B Heptachlo...	0.000	5.601	0	20488676	N.D.	1.173 #
9) A Endosulfan I	5.036	5.989	295193	1713132	0.102	0.111
10) B gamma-Chl...	4.904	5.878f	231865	705268	0.073	0.043 #
11) B alpha-Chl...	4.975	5.907f	647942	1369453	0.209	0.085 #
12) B 4,4'-DDE	5.161	6.103	2674272	1116956	0.895	0.073 #
13) MA Dieldrin	0.000	6.260	0	1891506	N.D.	0.120 #
17) MA 4,4'-DDT	5.964	0.000	208372	0	0.089	N.D. #
18) B Endrin al...	6.067f	0.000	281029	0	0.143	N.D. #
19) B Endosulfa...	6.275	7.117f	1656837	1356886	0.659	0.119 #
20) A Methoxychlor	6.569f	0.000	112380	0	0.083	N.D. #
21) B Endrin ke...	0.000	7.591	0	1032313	N.D.	0.083 #
22) Mirex	0.000	8.041	0	1581006	N.D.	0.190 #

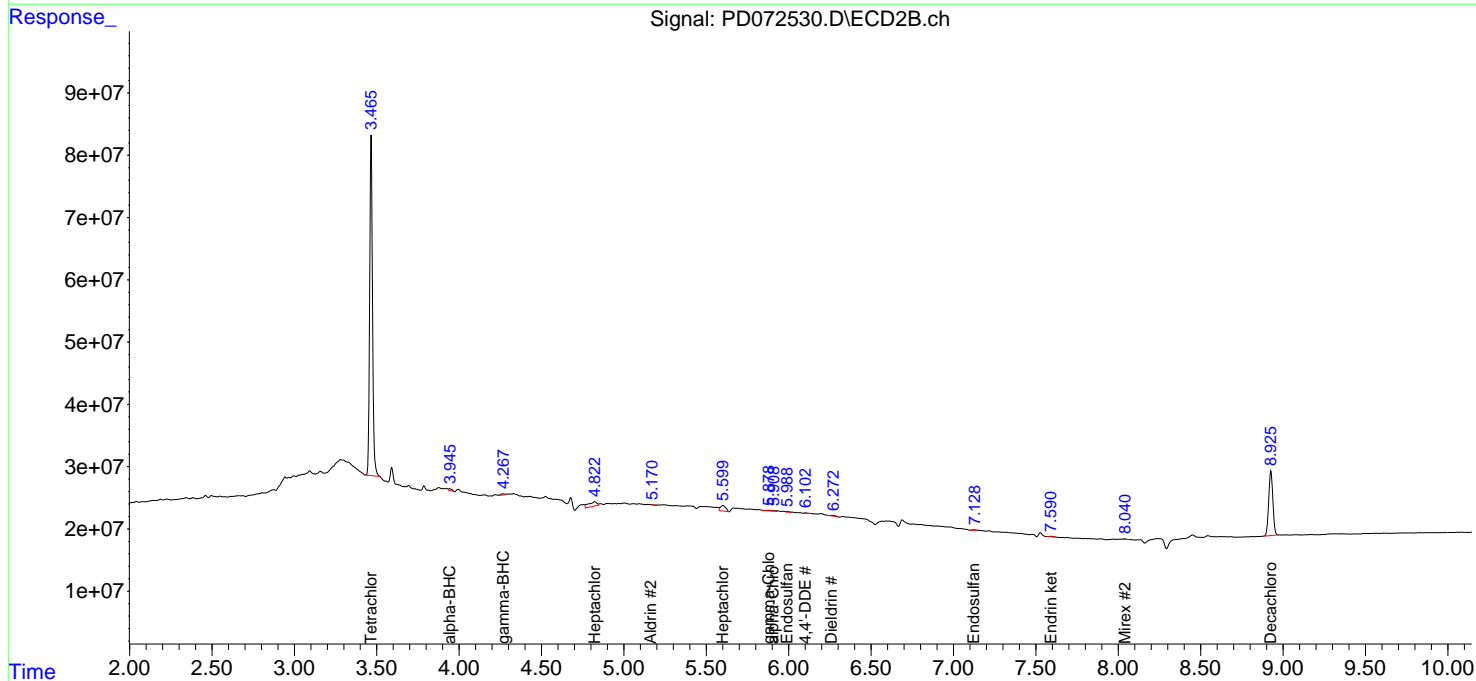
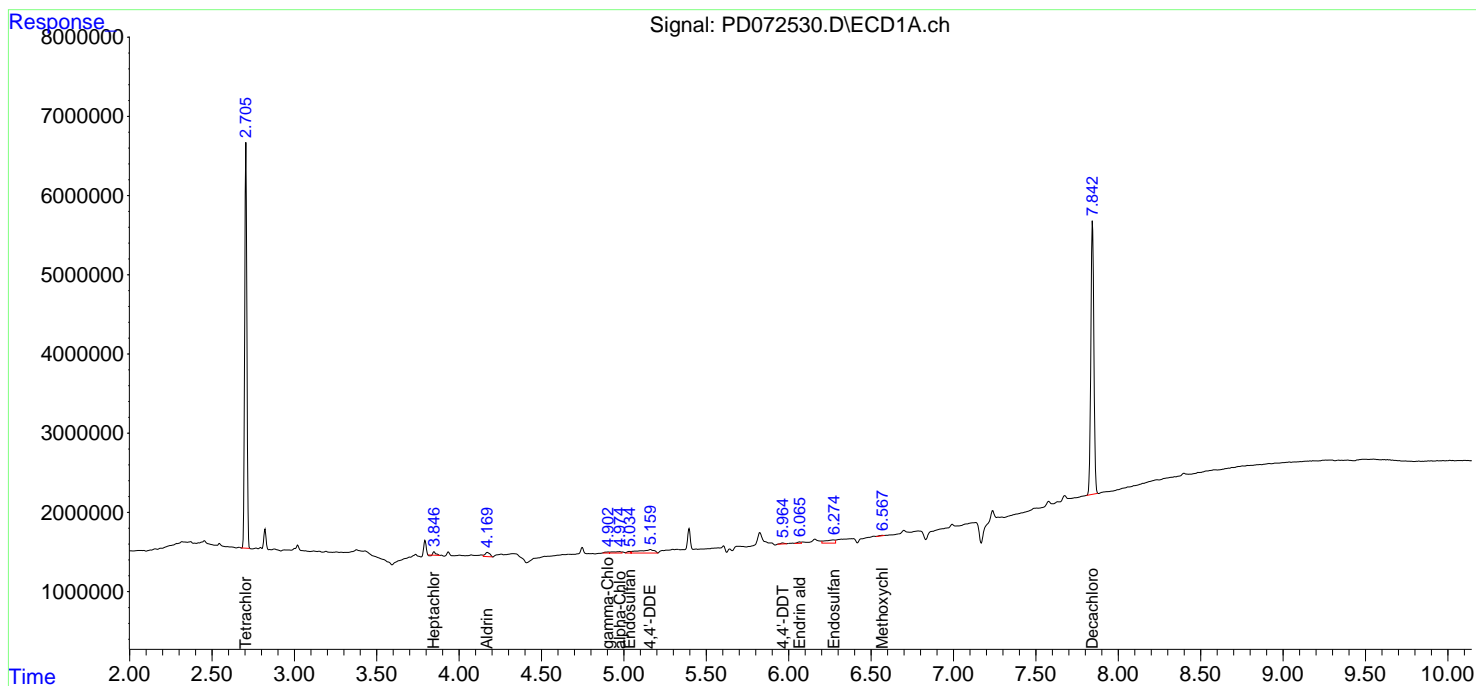
(f)=RT Delta > 1/2 Window (#)=Amounts differ by > 25% (m)=manual int.

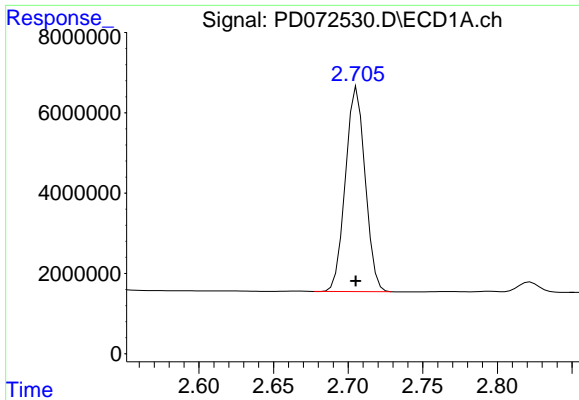
Data Path : Z:\pestpcbsrv\HPCHEM1\ECD\_D\Data\PD102022\  
 Data File : PD072530.D  
 Signal(s) : Signal #1: ECD1A.ch Signal #2: ECD2B.ch  
 Acq On : 20 Oct 2022 17:21  
 Operator : AR\AJ  
 Sample : I.BLK  
 Misc :  
 ALS Vial : 2 Sample Multiplier: 1

Instrument :  
 ECD\_D  
 ClientSampleId :

Integration File signal 1: autoint1.e  
 Integration File signal 2: autoint2.e  
 Quant Time: Oct 21 04:09:25 2022  
 Quant Method : Z:\pestpcbsrv\HPCHEM1\ECD\_D\Method\PD102022.M  
 Quant Title : GC Extractables  
 QLast Update : Fri Oct 21 02:43:40 2022  
 Response via : Initial Calibration  
 Integrator: ChemStation

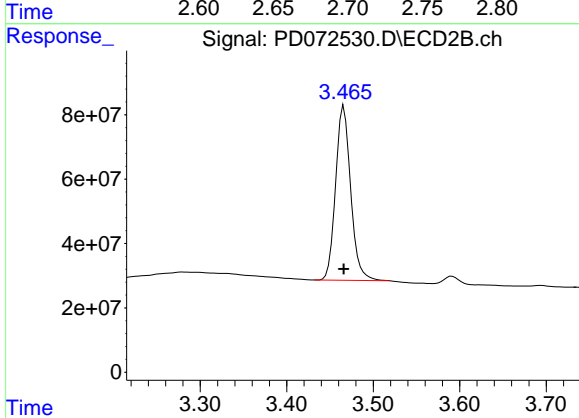
Volume Inj. : 2 µl  
 Signal #1 Phase : ZB-MR2 Signal #2 Phase: ZB-MR1  
 Signal #1 Info : 30M x 0.32mm x0.2 Signal #2 Info : 30M x 0.32mm x 0.50µm



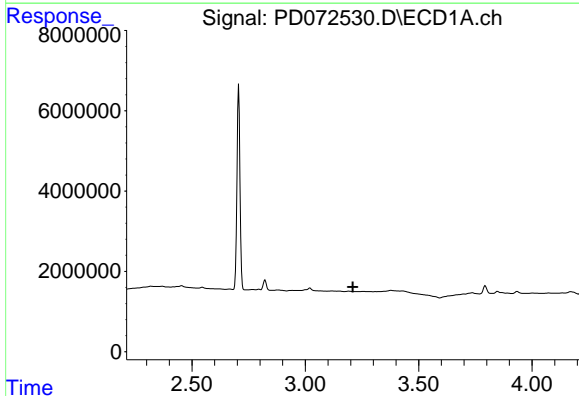


#1 Tetrachloro-m-xylene  
 R.T.: 2.706 min  
 Delta R.T.: 0.001 min  
 Response: 46966566  
 Conc: 18.85 ng/ml

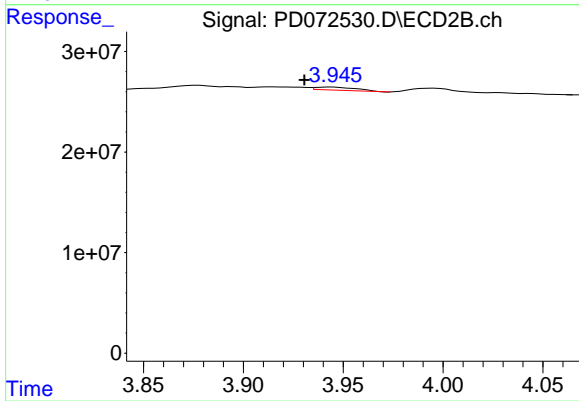
Instrument :  
 ECD\_D  
 ClientSampleId :



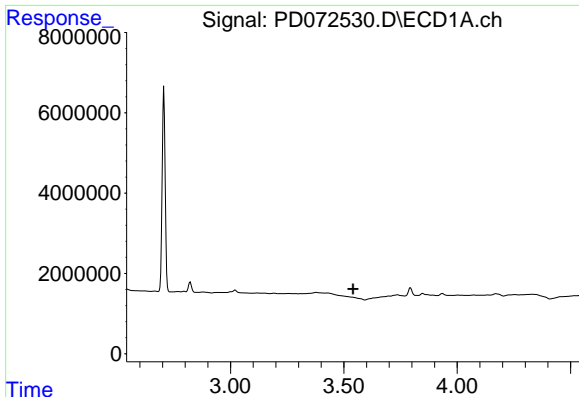
#1 Tetrachloro-m-xylene  
 R.T.: 3.466 min  
 Delta R.T.: 0.000 min  
 Response: 653354724  
 Conc: 19.65 ng/ml



#2 alpha-BHC  
 R.T.: 0.000 min  
 Exp R.T. : 3.209 min  
 Response: 0  
 Conc: N.D.



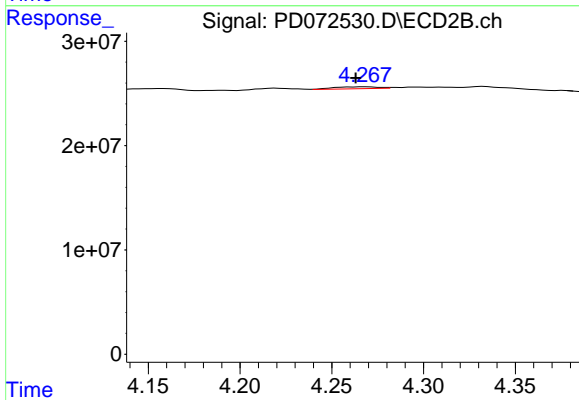
#2 alpha-BHC  
 R.T.: 3.944 min  
 Delta R.T.: 0.013 min  
 Response: 4440181  
 Conc: 0.10 ng/ml



#3 gamma-BHC (Lindane)

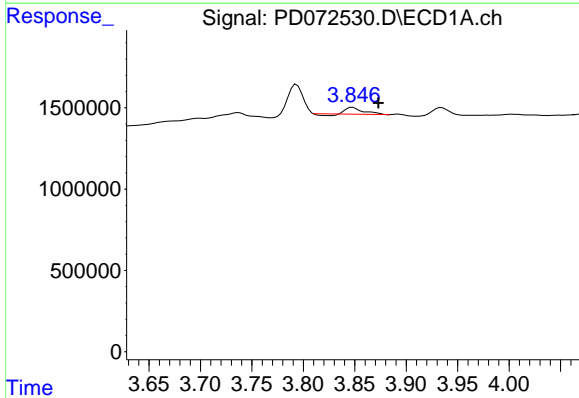
R.T.: 0.000 min  
 Exp R.T.: 3.540 min  
 Response: 0  
 Conc: N.D.

Instrument :  
 ECD\_D  
 ClientSampleId :



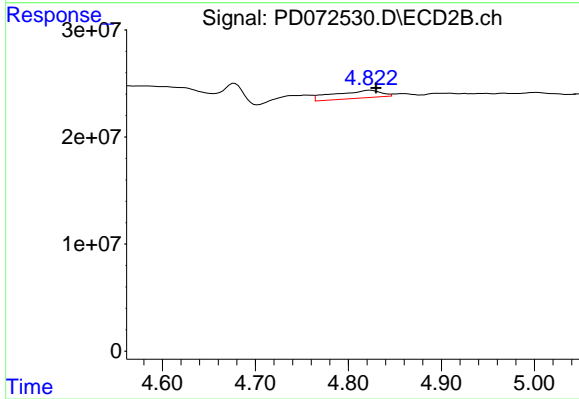
#3 gamma-BHC (Lindane)

R.T.: 4.268 min  
 Delta R.T.: 0.005 min  
 Response: 3076581  
 Conc: 0.08 ng/ml



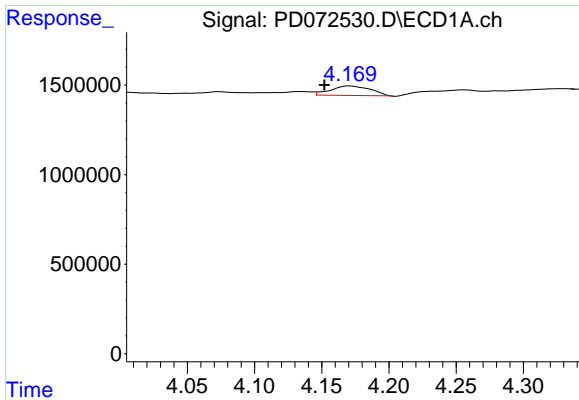
#4 Heptachlor

R.T.: 3.848 min  
 Delta R.T.: -0.025 min  
 Response: 428940  
 Conc: 0.12 ng/ml



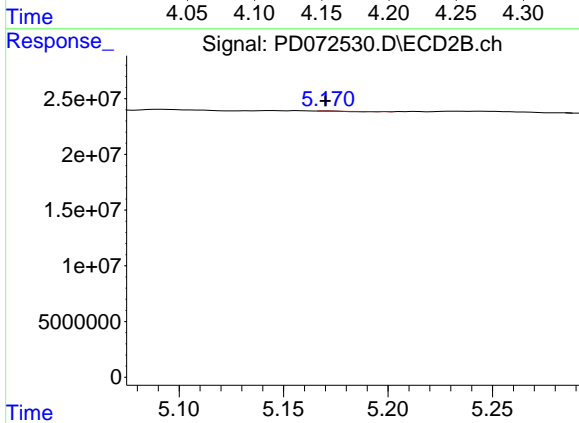
#4 Heptachlor

R.T.: 4.823 min  
 Delta R.T.: -0.007 min  
 Response: 25231628  
 Conc: 0.97 ng/ml

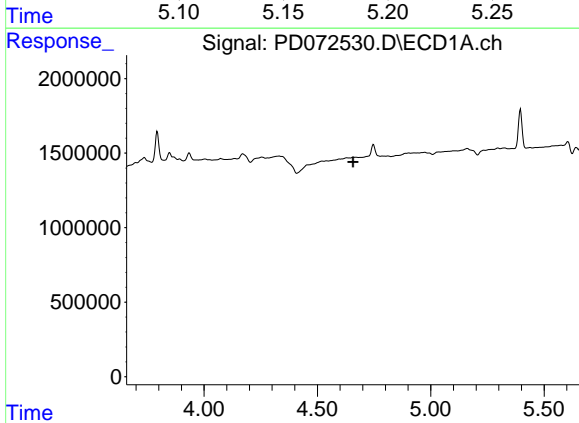


#5 Aldrin  
 R.T.: 4.171 min  
 Delta R.T.: 0.018 min  
 Response: 1074578  
 Conc: 0.31 ng/ml

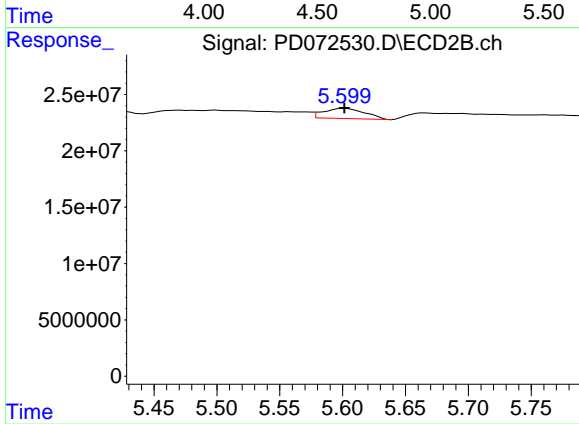
Instrument :  
 ECD\_D  
 ClientSampleId :



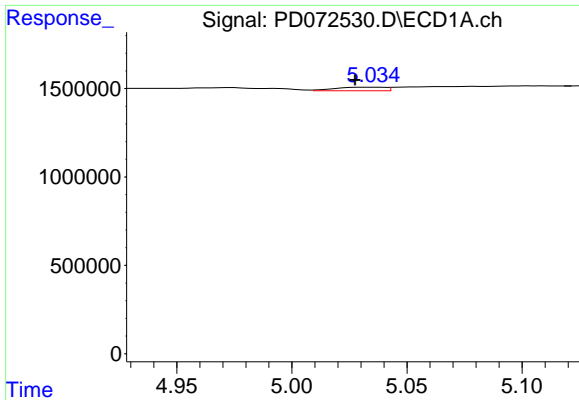
#5 Aldrin  
 R.T.: 5.171 min  
 Delta R.T.: 0.001 min  
 Response: 63230  
 Conc: 0.00 ng/ml



#8 Heptachlor epoxide  
 R.T.: 0.000 min  
 Exp R.T. : 4.658 min  
 Response: 0  
 Conc: N.D.



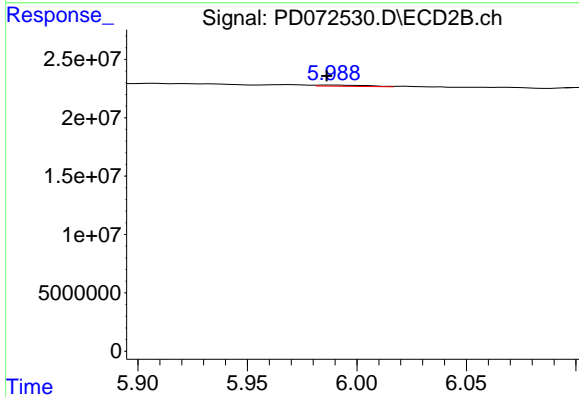
#8 Heptachlor epoxide  
 R.T.: 5.601 min  
 Delta R.T.: 0.000 min  
 Response: 20488676  
 Conc: 1.17 ng/ml



#9 Endosulfan I

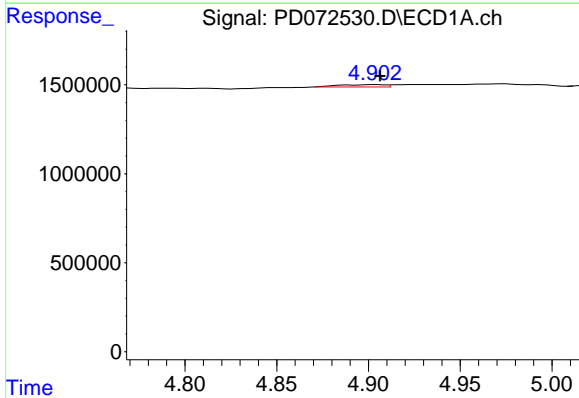
R.T.: 5.036 min  
 Delta R.T.: 0.008 min  
 Response: 295193  
 Conc: 0.10 ng/ml

Instrument :  
 ECD\_D  
 ClientSampleId :



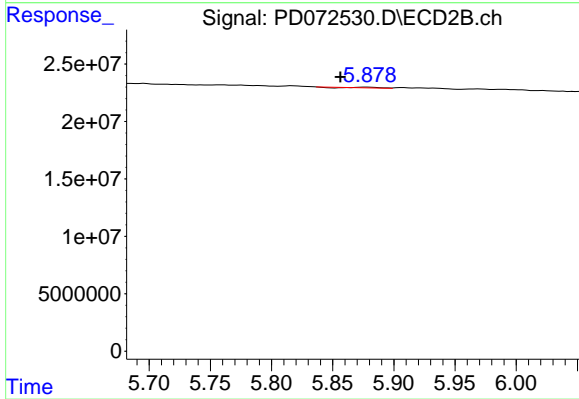
#9 Endosulfan I

R.T.: 5.989 min  
 Delta R.T.: 0.002 min  
 Response: 1713132  
 Conc: 0.11 ng/ml



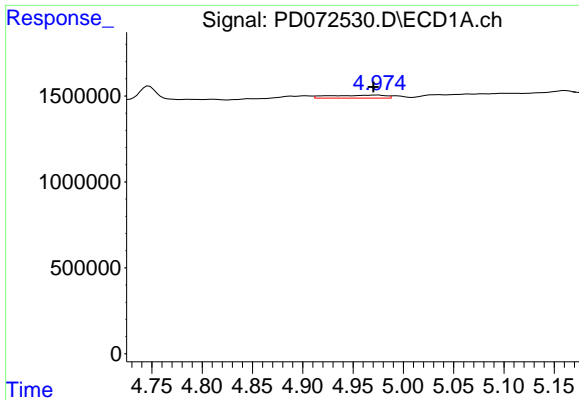
#10 gamma-Chlordane

R.T.: 4.904 min  
 Delta R.T.: -0.003 min  
 Response: 231865  
 Conc: 0.07 ng/ml



#10 gamma-Chlordane

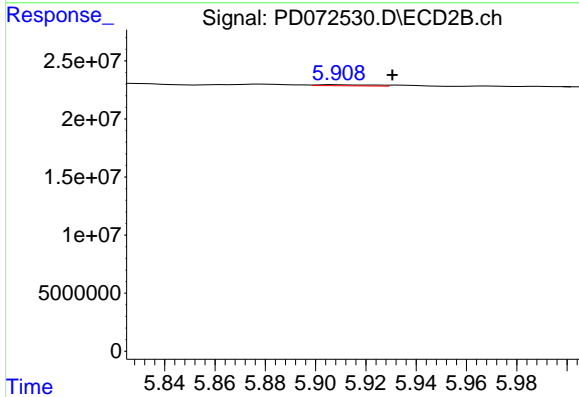
R.T.: 5.878 min  
 Delta R.T.: 0.022 min  
 Response: 705268  
 Conc: 0.04 ng/ml



#11 alpha-Chlordane

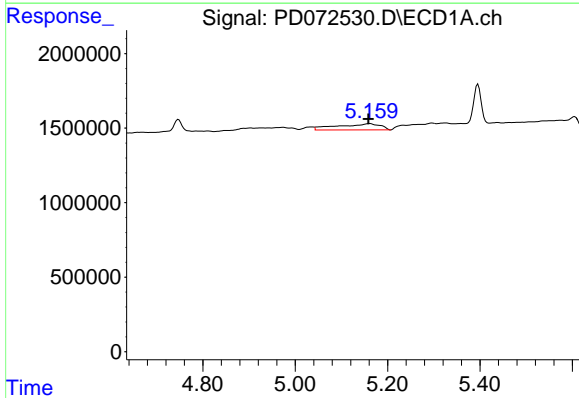
R.T.: 4.975 min  
 Delta R.T.: 0.005 min  
 Response: 647942  
 Conc: 0.21 ng/ml

Instrument :  
 ECD\_D  
 ClientSampleId :



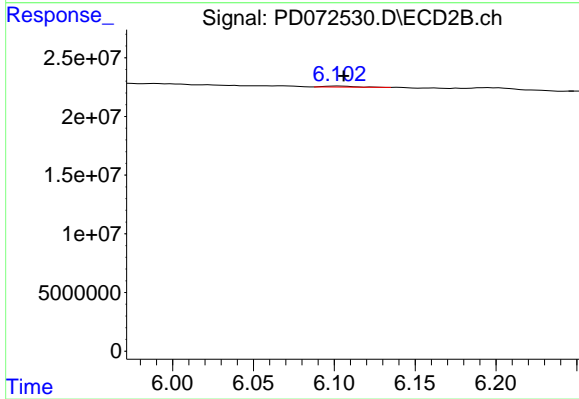
#11 alpha-Chlordane

R.T.: 5.907 min  
 Delta R.T.: -0.023 min  
 Response: 1369453  
 Conc: 0.09 ng/ml



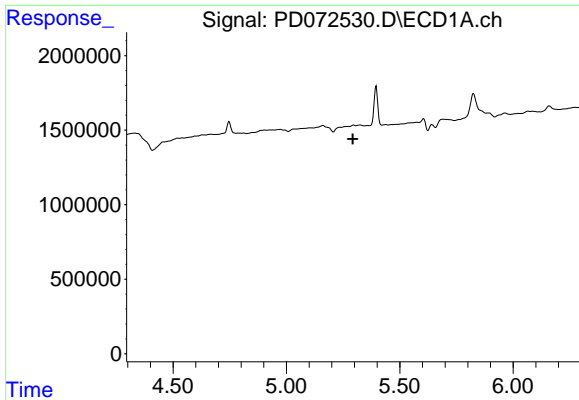
#12 4,4'-DDE

R.T.: 5.161 min  
 Delta R.T.: 0.002 min  
 Response: 2674272  
 Conc: 0.90 ng/ml



#12 4,4'-DDE

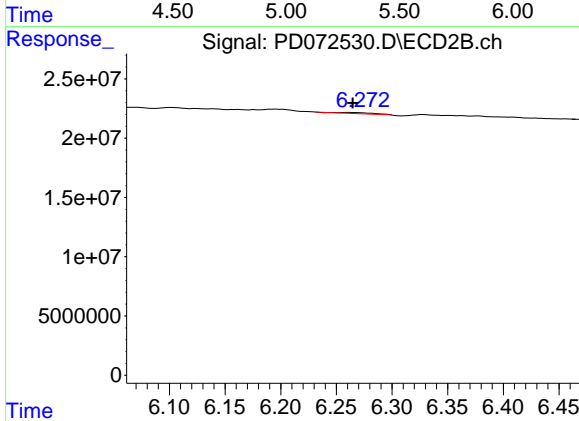
R.T.: 6.103 min  
 Delta R.T.: -0.003 min  
 Response: 1116956  
 Conc: 0.07 ng/ml



#13 Dieldrin

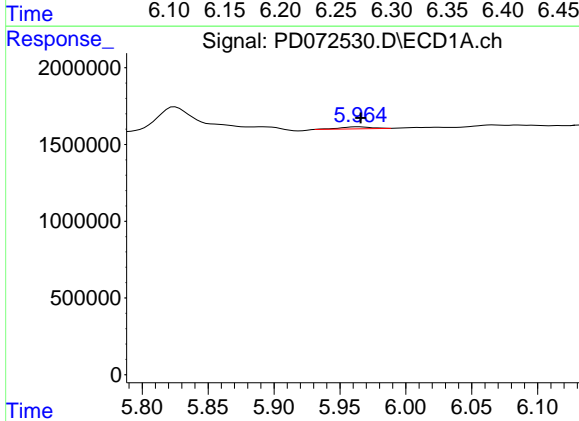
R.T.: 0.000 min  
 Exp R.T.: 5.293 min  
 Response: 0  
 Conc: N.D.

Instrument :  
 ECD\_D  
 ClientSampleId :



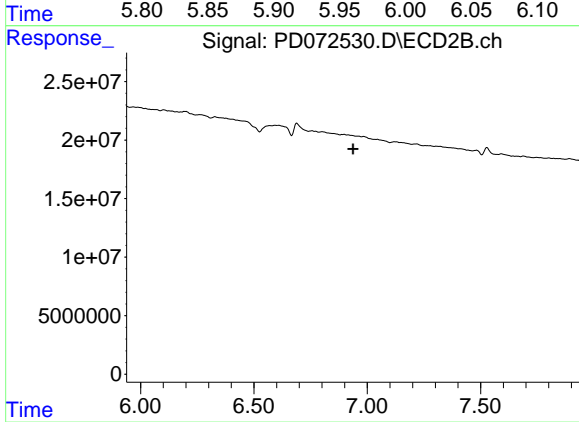
#13 Dieldrin

R.T.: 6.260 min  
 Delta R.T.: -0.005 min  
 Response: 1891506  
 Conc: 0.12 ng/ml



#17 4,4'-DDT

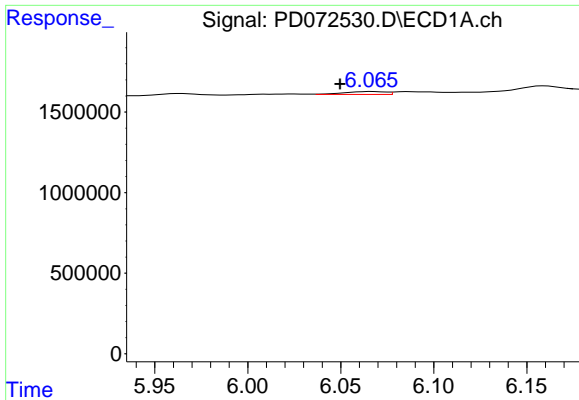
R.T.: 5.964 min  
 Delta R.T.: -0.002 min  
 Response: 208372  
 Conc: 0.09 ng/ml



#17 4,4'-DDT

R.T.: 0.000 min  
 Exp R.T.: 6.938 min  
 Response: 0  
 Conc: N.D.

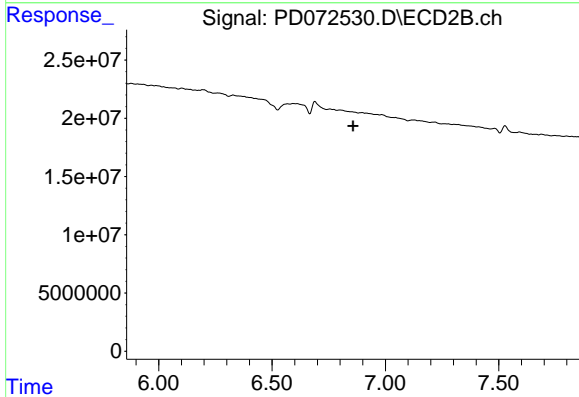




#18 Endrin aldehyde

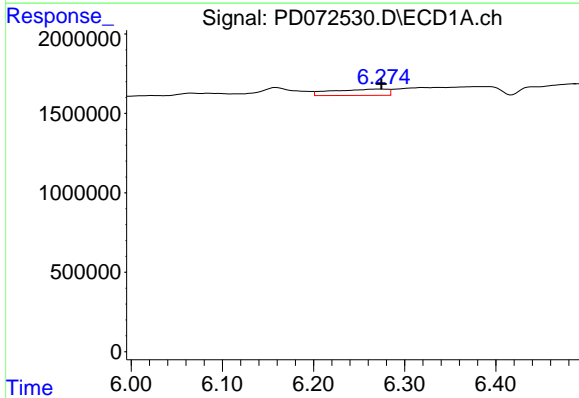
R.T.: 6.067 min  
 Delta R.T.: 0.017 min  
 Response: 281029  
 Conc: 0.14 ng/ml

Instrument :  
 ECD\_D  
 ClientSampleId :



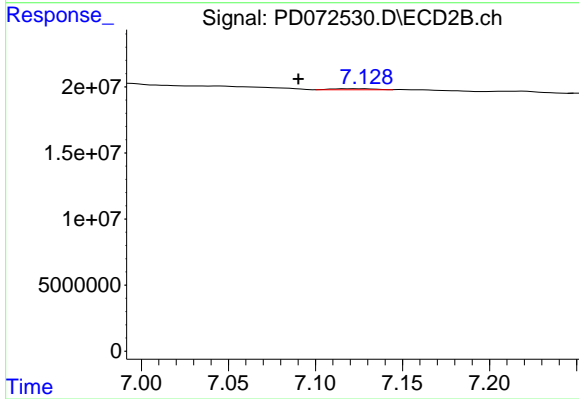
#18 Endrin aldehyde

R.T.: 0.000 min  
 Exp R.T. : 6.858 min  
 Response: 0  
 Conc: N.D.



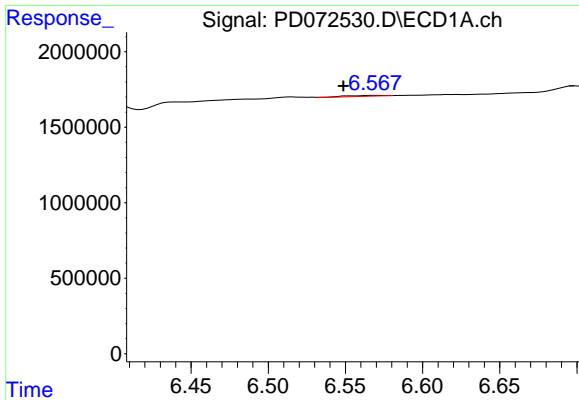
#19 Endosulfan Sulfate

R.T.: 6.275 min  
 Delta R.T.: 0.001 min  
 Response: 1656837  
 Conc: 0.66 ng/ml



#19 Endosulfan Sulfate

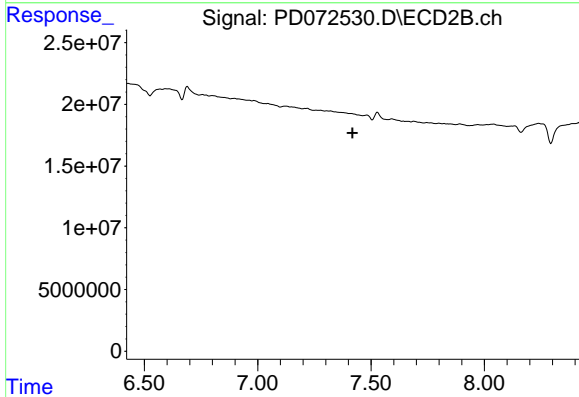
R.T.: 7.117 min  
 Delta R.T.: 0.027 min  
 Response: 1356886  
 Conc: 0.12 ng/ml



#20 Methoxychlor

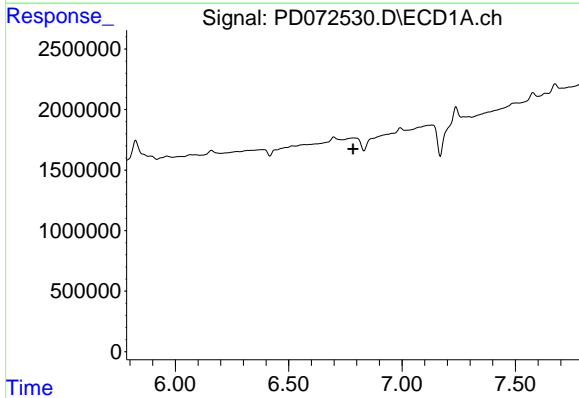
R.T.: 6.569 min  
 Delta R.T.: 0.020 min  
 Response: 112380  
 Conc: 0.08 ng/ml

Instrument :  
 ECD\_D  
 ClientSampleId :



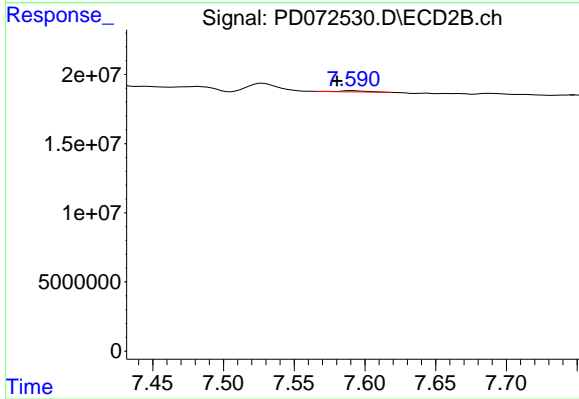
#20 Methoxychlor

R.T.: 0.000 min  
 Exp R.T. : 7.418 min  
 Response: 0  
 Conc: N.D.



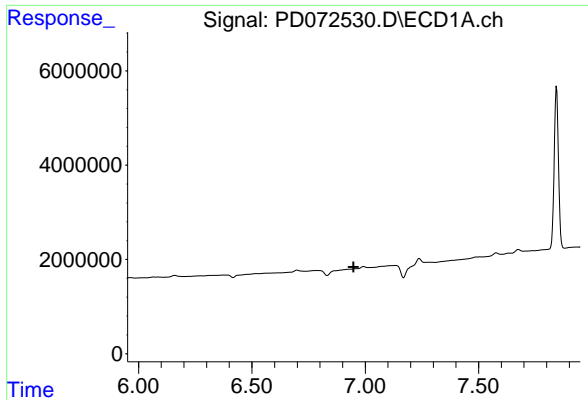
#21 Endrin ketone

R.T.: 0.000 min  
 Exp R.T. : 6.785 min  
 Response: 0  
 Conc: N.D.



#21 Endrin ketone

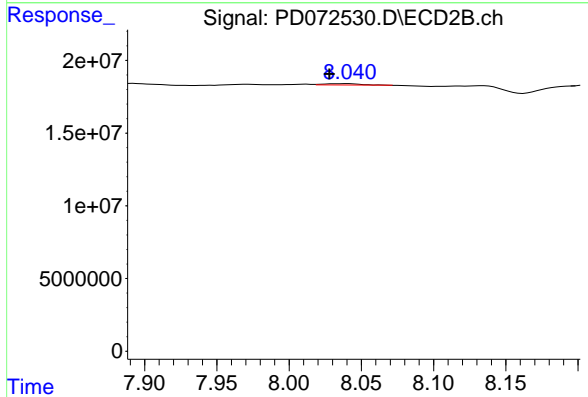
R.T.: 7.591 min  
 Delta R.T.: 0.011 min  
 Response: 1032313  
 Conc: 0.08 ng/ml



#22 Mirex

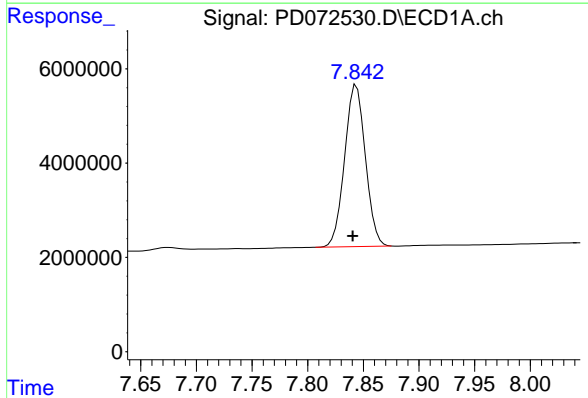
R.T.: 0.000 min  
 Exp R.T.: 6.949 min  
 Response: 0  
 Conc: N.D.

Instrument :  
 ECD\_D  
 ClientSampleId :



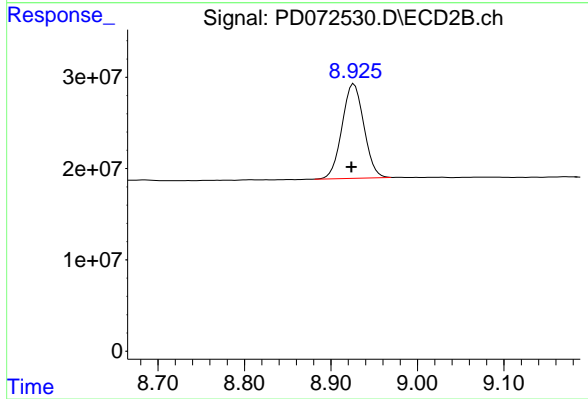
#22 Mirex

R.T.: 8.041 min  
 Delta R.T.: 0.013 min  
 Response: 1581006  
 Conc: 0.19 ng/ml



#28 Decachlorobiphenyl

R.T.: 7.844 min  
 Delta R.T.: 0.003 min  
 Response: 44566484  
 Conc: 19.80 ng/ml



#28 Decachlorobiphenyl

R.T.: 8.927 min  
 Delta R.T.: 0.003 min  
 Response: 180739022  
 Conc: 20.09 ng/ml