

Data Path : Z:\pestpcbsrv\HPCHEM1\ECD_D\Data\PD102121\
 Data File : PD066485.D
 Signal(s) : Signal #1: ECD1A.ch Signal #2: ECD2B.ch
 Acq On : 21 Oct 2021 16:35
 Operator : AJ\MA
 Sample : M4215-06
 Misc :
 ALS Vial : 18 Sample Multiplier: 1

Instrument :
 ECD_D
 ClientSampleId :
 JDGC5

Integration File signal 1: autoint1.e
 Integration File signal 2: autoint2.e
 Quant Time: Oct 22 02:24:01 2021
 Quant Method : Z:\pestpcbsrv\HPCHEM1\ECD_D\Method\PD101621CLP.M
 Quant Title : GC Extractables
 QLast Update : Tue Oct 19 10:18:55 2021
 Response via : Initial Calibration
 Integrator: ChemStation

Volume Inj. : 1 µl
 Signal #1 Phase : ZB-MR2 Signal #2 Phase: ZB-MR1
 Signal #1 Info : 30M x 0.32mm x0.2 Signal #2 Info : 30M x 0.32mm x 0.50µm

Compound	RT#1	RT#2	Resp#1	Resp#2	ng/ml	ng/ml

System Monitoring Compounds						
1) SA Tetrachlo...	3.440	3.970	27173557	122.5E6	13.308	13.749
27) SA Decachlor...	8.167	9.021	30896643	128.9E6	22.725	27.134

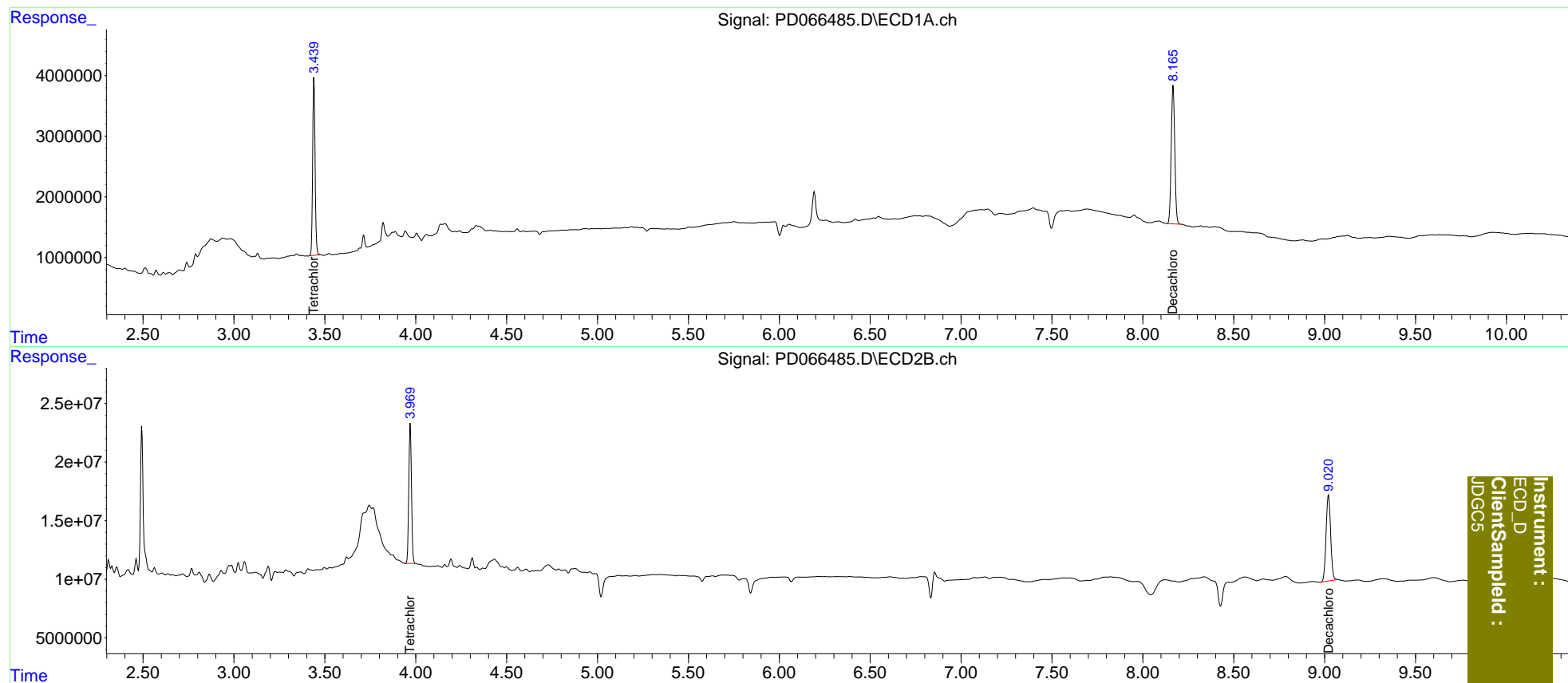
Target Compounds

(f)=RT Delta > 1/2 Window (#)=Amounts differ by > 25% (m)=manual int.

Data Path : Z:\pestpcbsrv\HPCHEM1\ECD_D\Data\PD102121\
 Data File : PD066485.D
 Signal(s) : Signal #1: ECD1A.ch Signal #2: ECD2B.ch
 Acq On : 21 Oct 2021 16:35
 Operator : AJ\MA
 Sample : M4215-06
 Misc :
 ALS Vial : 18 Sample Multiplier: 1

Integration File signal 1: autoint1.e
 Integration File signal 2: autoint2.e
 Quant Time: Oct 22 02:24:01 2021
 Quant Method : Z:\pestpcbsrv\HPCHEM1\ECD_D\Method\PD101621CLP.M
 Quant Title : GC Extractables
 QLast Update : Tue Oct 19 10:18:55 2021
 Response via : Initial Calibration
 Integrator: ChemStation

Volume Inj. : 1 µl
 Signal #1 Phase : ZB-MR2 Signal #2 Phase: ZB-MR1
 Signal #1 Info : 30M x 0.32mm x 0.2 Signal #2 Info : 30M x 0.32mm x 0.50µm



Instrument :
 ECD_D
 ClientSampleId :
 JDGC5