

Data Path : Z:\pestpcbsrv\HPCHEM1\ECD\_D\Data\PD102125\  
 Data File : PD090734.D  
 Signal(s) : Signal #1: ECD1A.ch Signal #2: ECD2B.ch  
 Acq On : 21 Oct 2025 16:54  
 Operator : AR\AJ  
 Sample : Q3402-10  
 Misc :  
 ALS Vial : 12 Sample Multiplier: 1

Instrument :  
 ECD\_D  
 ClientSampleId :  
 41-RB

Integration File signal 1: autoint1.e  
 Integration File signal 2: autoint2.e  
 Quant Time: Oct 23 11:22:33 2025  
 Quant Method : Z:\pestpcbsrv\HPCHEM1\ECD\_D\Method\PD101725.M  
 Quant Title : GC Extractables  
 QLast Update : Fri Oct 17 17:43:28 2025  
 Response via : Initial Calibration  
 Integrator: ChemStation

Volume Inj. : 1 µl  
 Signal #1 Phase : ZB-MR2 Signal #2 Phase: ZB-MR2  
 Signal #1 Info : 30M x 0.32mm x0.5 Signal #2 Info : 30M x 0.32mm x 0.25µm

Compound	RT#1	RT#2	Resp#1	Resp#2	ng/ml	ng/ml
System Monitoring Compounds						
1) SA Tetrachlo...	3.544	2.874	77802837	369.0E6	24.984	12.392 #
28) SA Decachlor...	9.066	8.062	33499103	215.0E6	7.161	7.098
Target Compounds						
2) A alpha-BHC	4.001	3.368f	1043445	3678366	0.145	0.072 #
3) MA gamma-BHC...	4.301f	3.729	496533	3925521	0.073	0.083
4) MA Heptachlor	4.944f	4.079	997135	8337844	0.178	0.187
5) MB Aldrin	5.251	4.356	418722	3619541	0.064	0.078
6) B beta-BHC	4.491f	4.034f	689373	11176028	0.263	0.564 #
7) B delta-BHC	4.769	4.260	2485866	5599521	0.368	0.117 #
8) B Heptachlo...	0.000	4.862	0	2870545	N.D.	0.067 #
9) A Endosulfan I	6.097f	5.261f	966709	18850417	0.175	0.479 #
10) B gamma-Chl...	5.938	5.143f	165690	15256482	0.028	0.339 #
11) B alpha-Chl...	5.993f	5.184	2608605	31803580	0.422	0.737 #
12) B 4,4'-DDE	6.200	5.360	34202	3763481	0.006	0.086 #
13) MA Dieldrin	6.340	5.506	1147411	19276512	0.197	0.436 #
14) MA Endrin	0.000	5.784	0	6191132	N.D.	0.153 #
15) B Endosulfa...	6.779	6.087	185792	6006161	0.037	0.160 #
17) MA 4,4'-DDT	7.015	6.178	451775	11198895	0.110	0.319 #
18) B Endrin al...	6.915	6.250	322788	3013330	0.088	0.109
19) B Endosulfa...	0.000	6.503f	0	3712684	N.D.	0.104 #
20) A Methoxychlor	0.000	6.728f	0	6938648	N.D.	0.398 #
22) Mirex	0.000	7.165	0	12916153	N.D.	0.503 #
23) Chlordane-1	4.685f	3.897	538534	12398133	2.850	9.948 #
24) Chlordane-2	5.251	4.497	418722	8060797	2.168	6.179 #
25) Chlordane-3	5.938	5.143f	165690	15256482	0.217	3.920 #
26) Chlordane-4	0.000	5.184	0	31803580	N.D.	9.519 #
27) Chlordane-5	6.848	6.087	514579	6006161	3.425	4.069

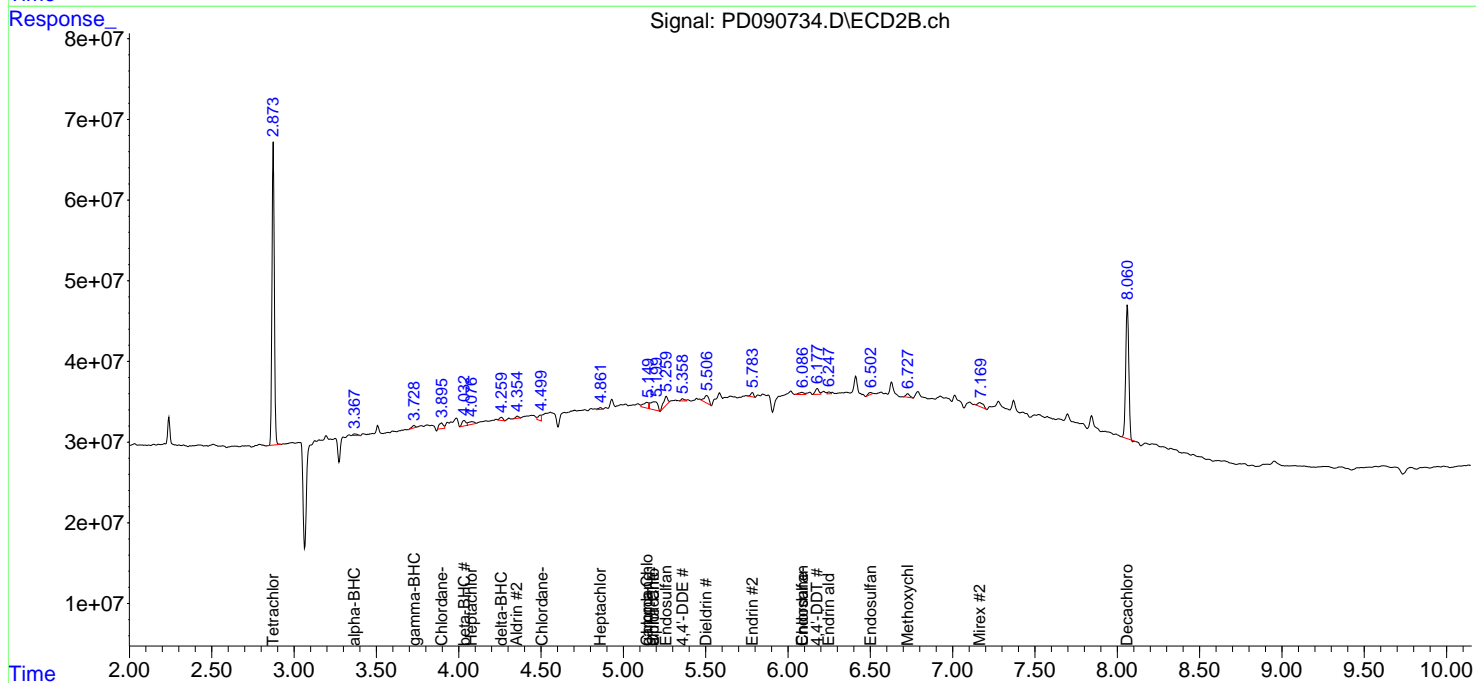
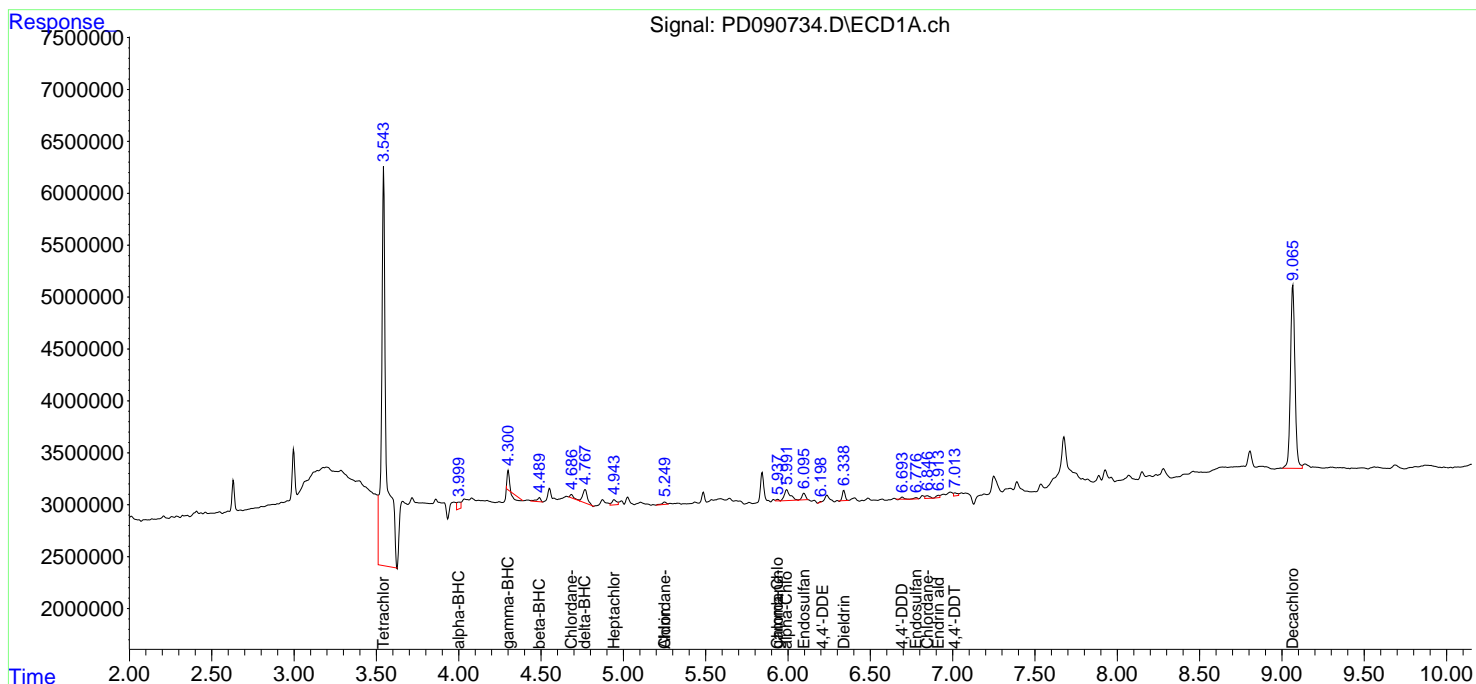
(f)=RT Delta > 1/2 Window (#)=Amounts differ by > 25% (m)=manual int.

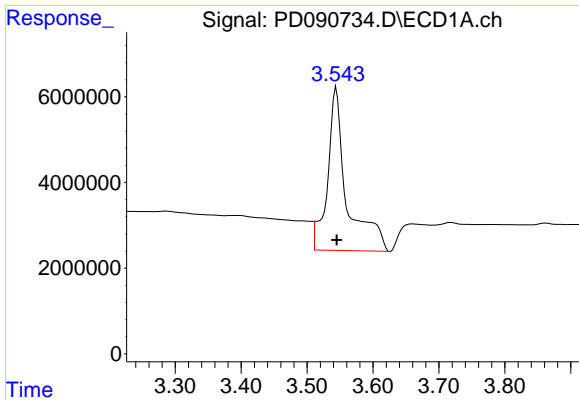
Data Path : Z:\pestpcbsrv\HPCHEM1\ECD\_D\Data\PD102125\  
 Data File : PD090734.D  
 Signal(s) : Signal #1: ECD1A.ch Signal #2: ECD2B.ch  
 Acq On : 21 Oct 2025 16:54  
 Operator : AR\AJ  
 Sample : Q3402-10  
 Misc :  
 ALS Vial : 12 Sample Multiplier: 1

Instrument :  
 ECD\_D  
 ClientSampleId :  
 41-RB

Integration File signal 1: autoint1.e  
 Integration File signal 2: autoint2.e  
 Quant Time: Oct 23 11:22:33 2025  
 Quant Method : Z:\pestpcbsrv\HPCHEM1\ECD\_D\Method\PD101725.M  
 Quant Title : GC Extractables  
 QLast Update : Fri Oct 17 17:43:28 2025  
 Response via : Initial Calibration  
 Integrator: ChemStation

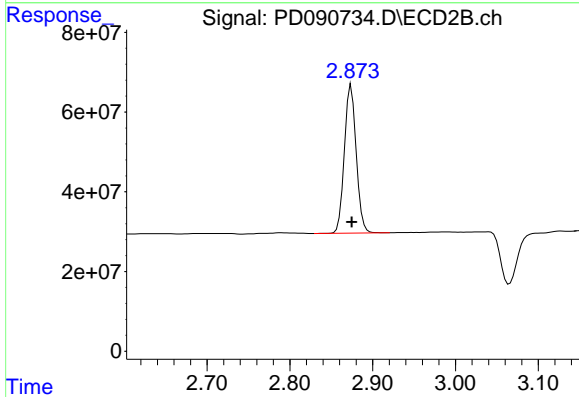
Volume Inj. : 1 µl  
 Signal #1 Phase : ZB-MR1 Signal #2 Phase: ZB-MR2  
 Signal #1 Info : 30M x 0.32mm x0.5 Signal #2 Info : 30M x 0.32mm x 0.25µm



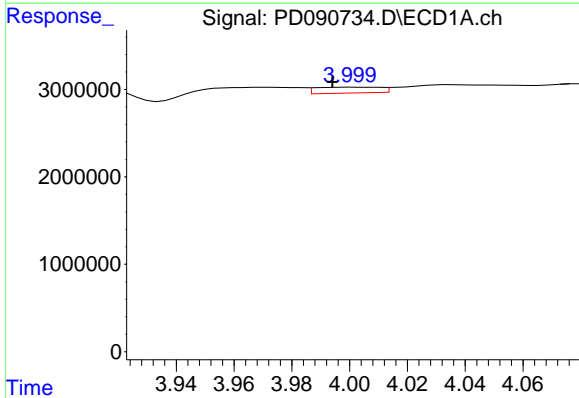


#1 Tetrachloro-m-xylene  
 R.T.: 3.544 min  
 Delta R.T.: 0.000 min  
 Response: 77802837  
 Conc: 24.98 ng/ml

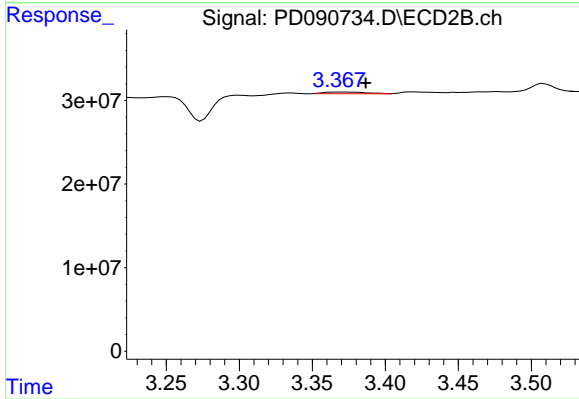
Instrument :  
 ECD\_D  
 ClientSampleId :  
 41-RB



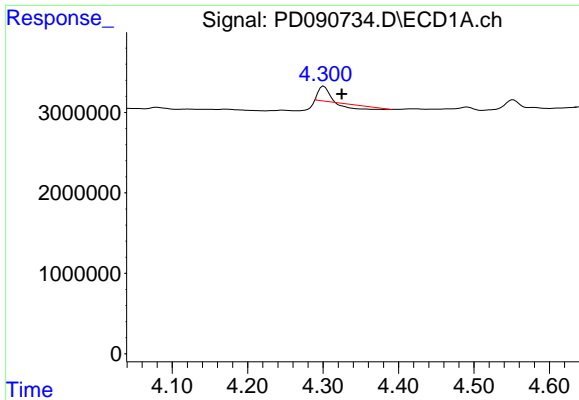
#1 Tetrachloro-m-xylene  
 R.T.: 2.874 min  
 Delta R.T.: 0.000 min  
 Response: 368985876  
 Conc: 12.39 ng/ml



#2 alpha-BHC  
 R.T.: 4.001 min  
 Delta R.T.: 0.007 min  
 Response: 1043445  
 Conc: 0.15 ng/ml



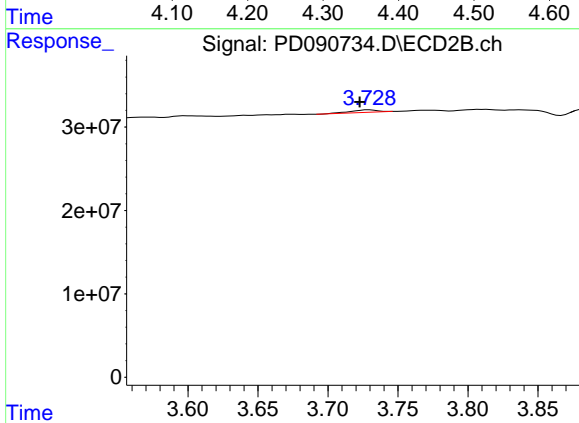
#2 alpha-BHC  
 R.T.: 3.368 min  
 Delta R.T.: -0.018 min  
 Response: 3678366  
 Conc: 0.07 ng/ml



#3 gamma-BHC (Lindane)

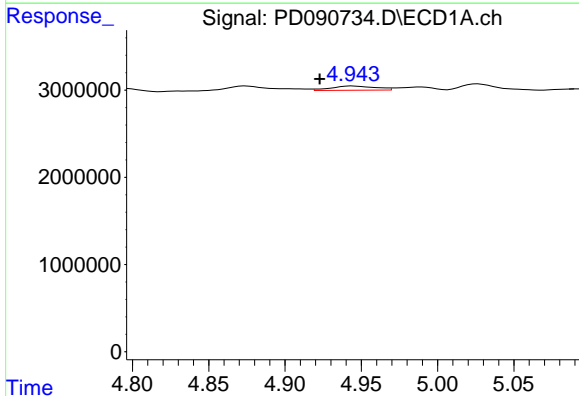
R.T.: 4.301 min  
 Delta R.T.: -0.024 min  
 Response: 496533  
 Conc: 0.07 ng/ml

Instrument :  
 ECD\_D  
 ClientSampleId :  
 41-RB



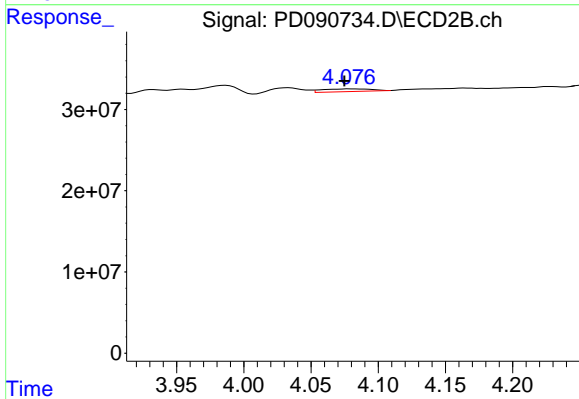
#3 gamma-BHC (Lindane)

R.T.: 3.729 min  
 Delta R.T.: 0.007 min  
 Response: 3925521  
 Conc: 0.08 ng/ml



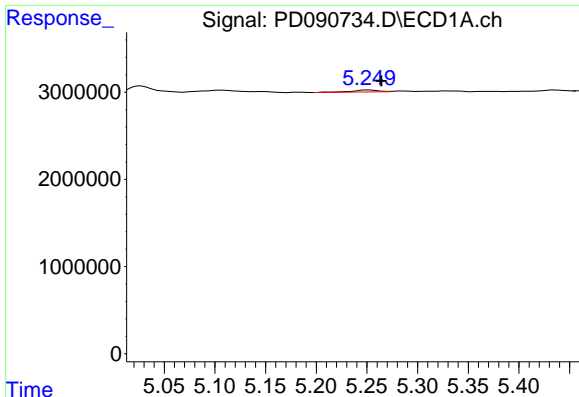
#4 Heptachlor

R.T.: 4.944 min  
 Delta R.T.: 0.022 min  
 Response: 997135  
 Conc: 0.18 ng/ml



#4 Heptachlor

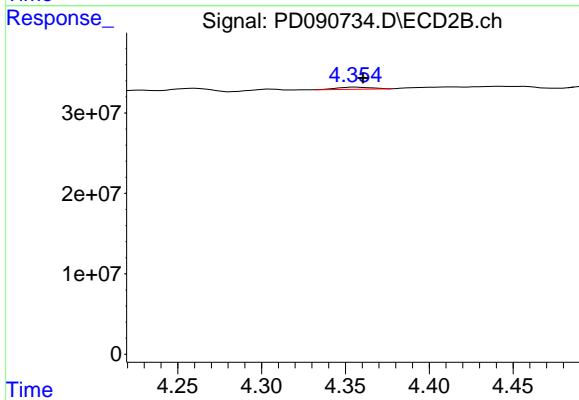
R.T.: 4.079 min  
 Delta R.T.: 0.004 min  
 Response: 8337844  
 Conc: 0.19 ng/ml



#5 Aldrin

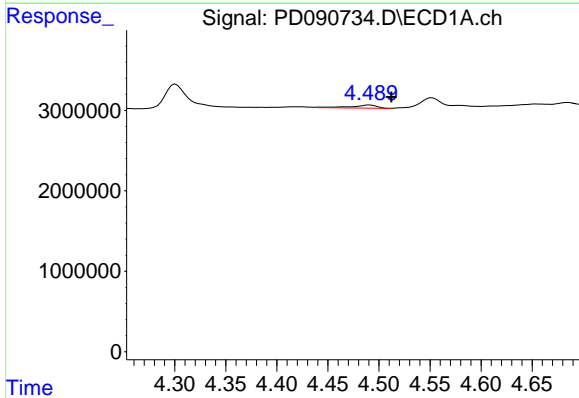
R.T.: 5.251 min  
 Delta R.T.: -0.013 min  
 Response: 418722  
 Conc: 0.06 ng/ml

Instrument :  
 ECD\_D  
 ClientSampleId :  
 41-RB



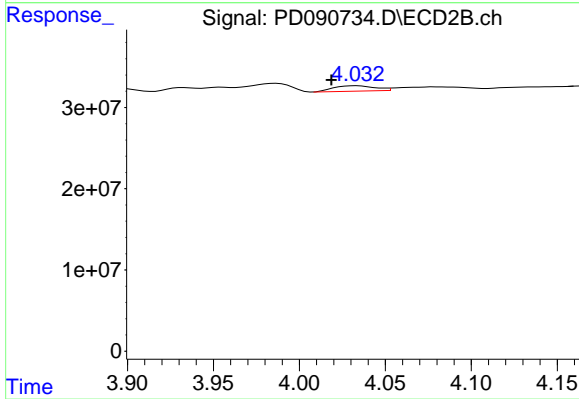
#5 Aldrin

R.T.: 4.356 min  
 Delta R.T.: -0.004 min  
 Response: 3619541  
 Conc: 0.08 ng/ml



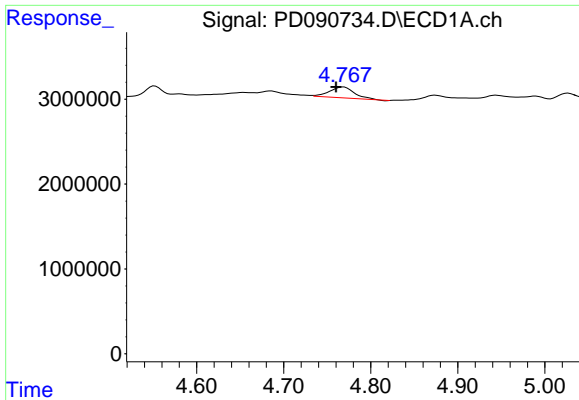
#6 beta-BHC

R.T.: 4.491 min  
 Delta R.T.: -0.021 min  
 Response: 689373  
 Conc: 0.26 ng/ml



#6 beta-BHC

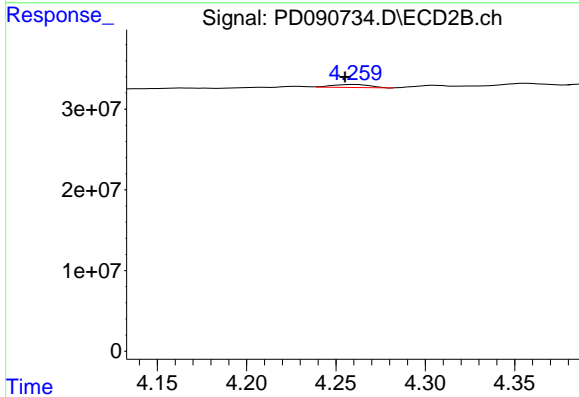
R.T.: 4.034 min  
 Delta R.T.: 0.015 min  
 Response: 11176028  
 Conc: 0.56 ng/ml



#7 delta-BHC

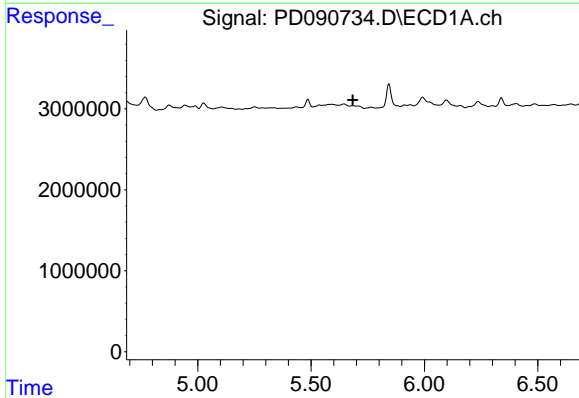
R.T.: 4.769 min  
 Delta R.T.: 0.008 min  
 Response: 2485866  
 Conc: 0.37 ng/ml

Instrument :  
 ECD\_D  
 ClientSampleId :  
 41-RB



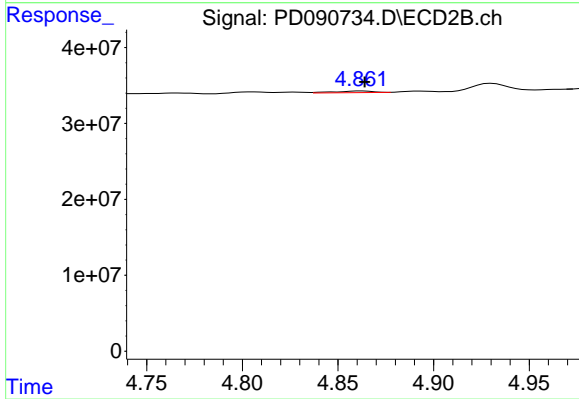
#7 delta-BHC

R.T.: 4.260 min  
 Delta R.T.: 0.005 min  
 Response: 5599521  
 Conc: 0.12 ng/ml



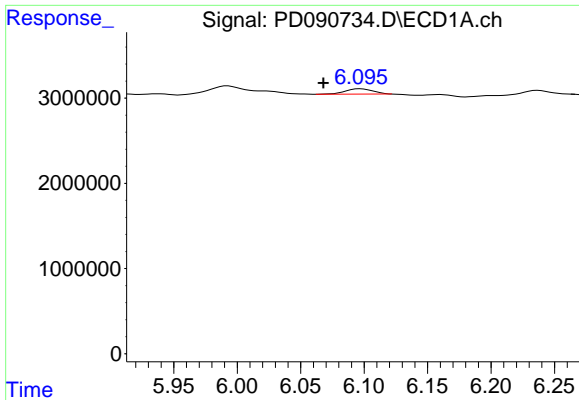
#8 Heptachlor epoxide

R.T.: 0.000 min  
 Exp R.T. : 5.684 min  
 Response: 0  
 Conc: N.D.



#8 Heptachlor epoxide

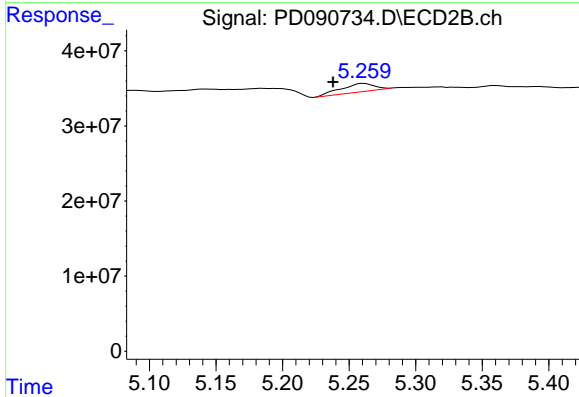
R.T.: 4.862 min  
 Delta R.T.: -0.002 min  
 Response: 2870545  
 Conc: 0.07 ng/ml



#9 Endosulfan I

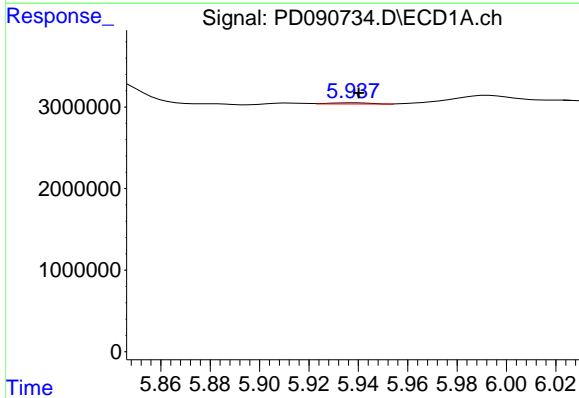
R.T.: 6.097 min  
 Delta R.T.: 0.029 min  
 Response: 966709  
 Conc: 0.17 ng/ml

Instrument :  
 ECD\_D  
 ClientSampleId :  
 41-RB



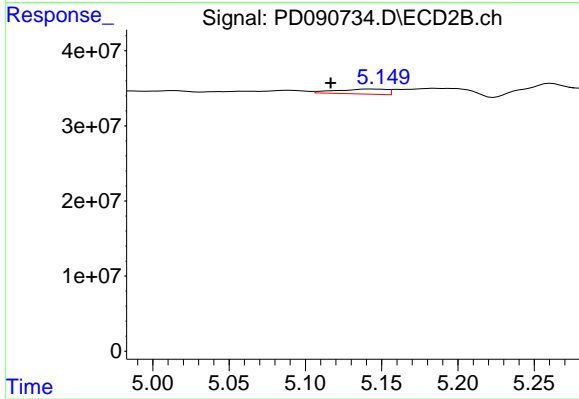
#9 Endosulfan I

R.T.: 5.261 min  
 Delta R.T.: 0.023 min  
 Response: 18850417  
 Conc: 0.48 ng/ml



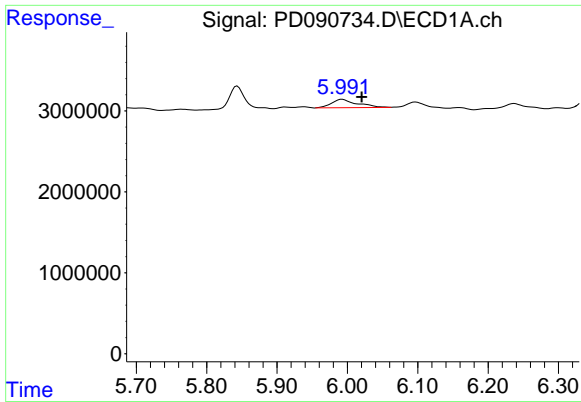
#10 gamma-Chlordane

R.T.: 5.938 min  
 Delta R.T.: -0.002 min  
 Response: 165690  
 Conc: 0.03 ng/ml



#10 gamma-Chlordane

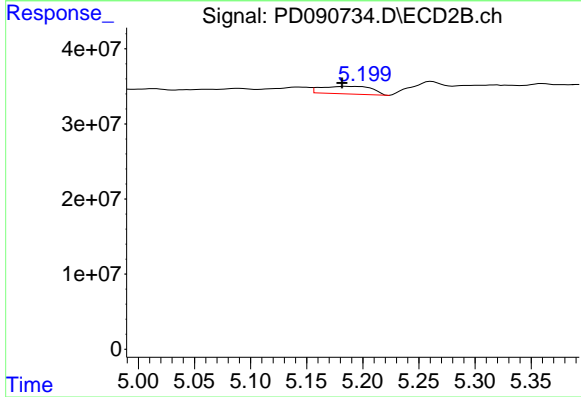
R.T.: 5.143 min  
 Delta R.T.: 0.026 min  
 Response: 15256482  
 Conc: 0.34 ng/ml



#11 alpha-Chlordane

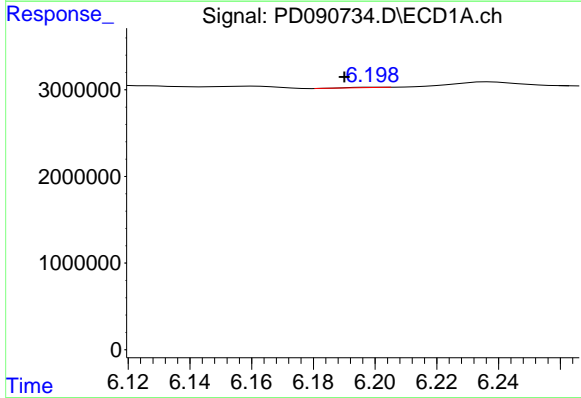
R.T.: 5.993 min  
 Delta R.T.: -0.028 min  
 Response: 2608605  
 Conc: 0.42 ng/ml

Instrument :  
 ECD\_D  
 ClientSampleId :  
 41-RB



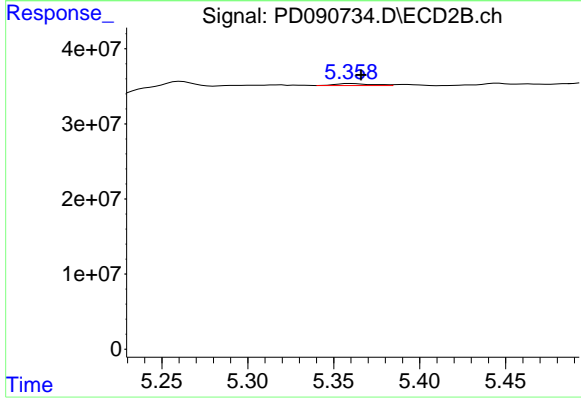
#11 alpha-Chlordane

R.T.: 5.184 min  
 Delta R.T.: 0.003 min  
 Response: 31803580  
 Conc: 0.74 ng/ml



#12 4,4'-DDE

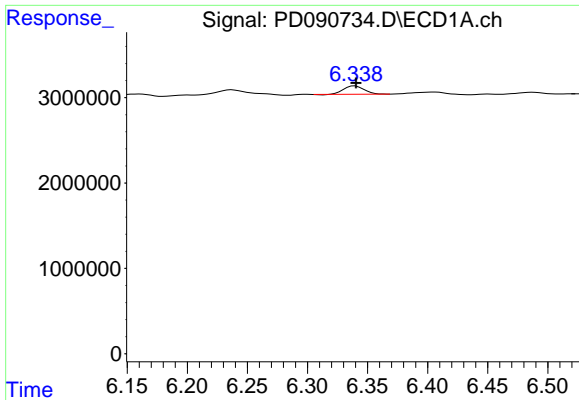
R.T.: 6.200 min  
 Delta R.T.: 0.010 min  
 Response: 34202  
 Conc: 0.01 ng/ml



#12 4,4'-DDE

R.T.: 5.360 min  
 Delta R.T.: -0.006 min  
 Response: 3763481  
 Conc: 0.09 ng/ml

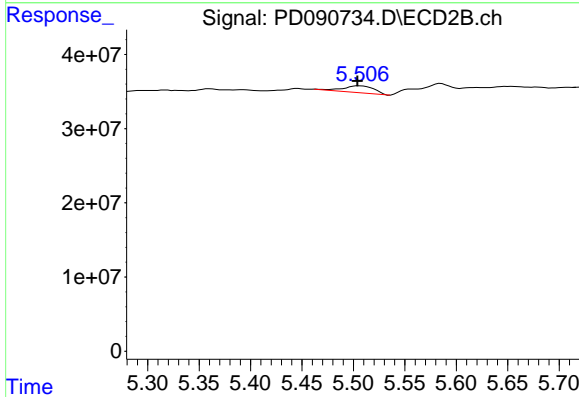




#13 Dieldrin

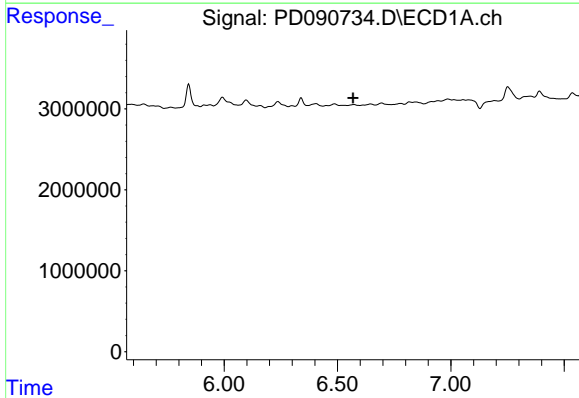
R.T.: 6.340 min  
 Delta R.T.: 0.000 min  
 Response: 1147411  
 Conc: 0.20 ng/ml

Instrument :  
 ECD\_D  
 ClientSampleId :  
 41-RB



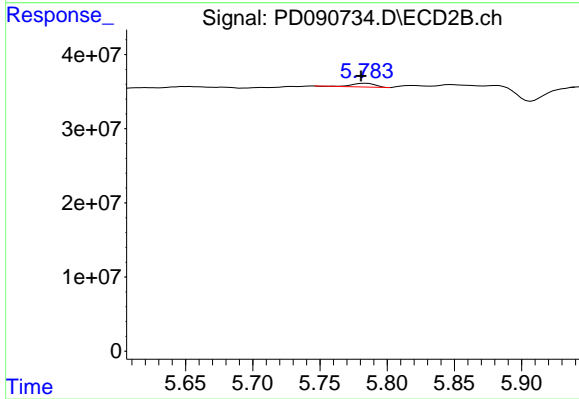
#13 Dieldrin

R.T.: 5.506 min  
 Delta R.T.: 0.002 min  
 Response: 19276512  
 Conc: 0.44 ng/ml



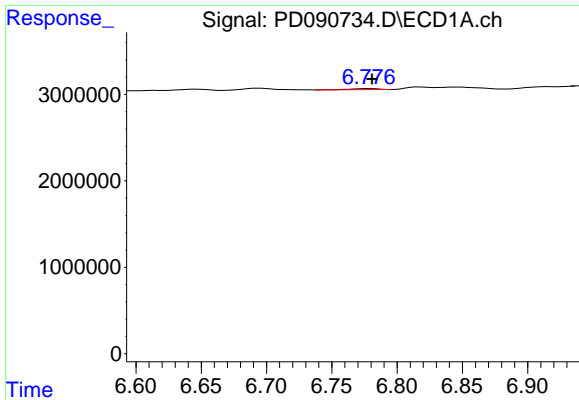
#14 Endrin

R.T.: 0.000 min  
 Exp R.T. : 6.568 min  
 Response: 0  
 Conc: N.D.



#14 Endrin

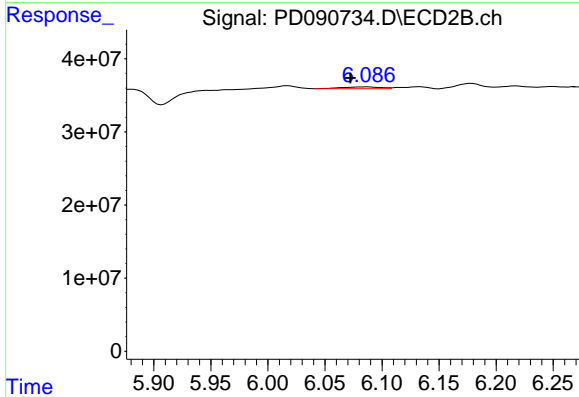
R.T.: 5.784 min  
 Delta R.T.: 0.003 min  
 Response: 6191132  
 Conc: 0.15 ng/ml



#15 Endosulfan II

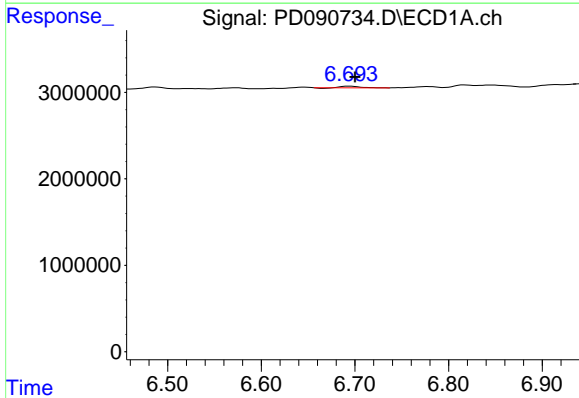
R.T.: 6.779 min  
 Delta R.T.: -0.002 min  
 Response: 185792  
 Conc: 0.04 ng/ml

Instrument :  
 ECD\_D  
 ClientSampleId :  
 41-RB



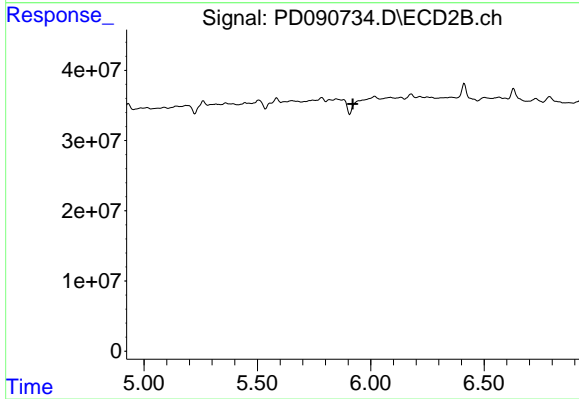
#15 Endosulfan II

R.T.: 6.087 min  
 Delta R.T.: 0.015 min  
 Response: 6006161  
 Conc: 0.16 ng/ml



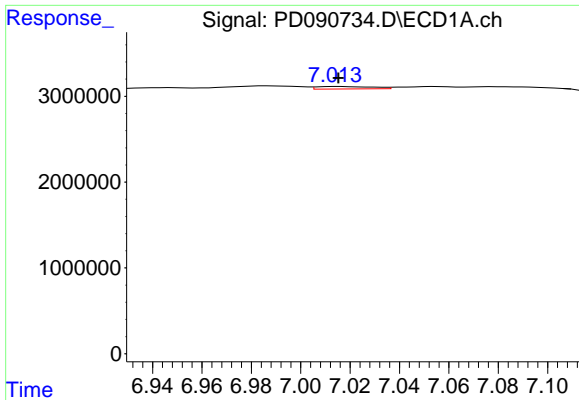
#16 4,4'-DDD

R.T.: 6.695 min  
 Delta R.T.: -0.006 min  
 Response: 237280  
 Conc: 0.06 ng/ml



#16 4,4'-DDD

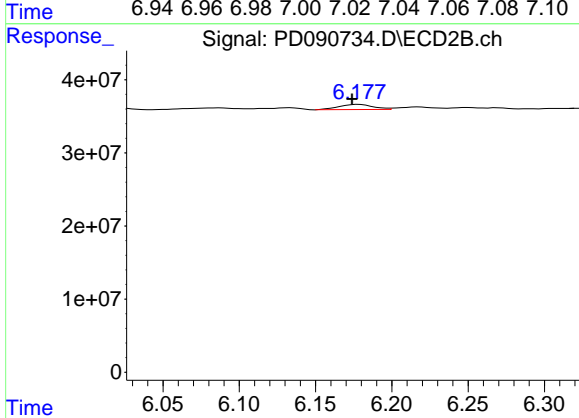
R.T.: 5.947 min  
 Delta R.T.: 0.026 min  
 Response: -29404025  
 Conc: N.D.



#17 4,4'-DDT

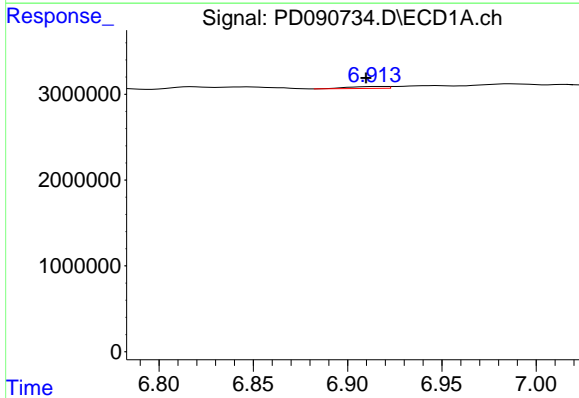
R.T.: 7.015 min  
 Delta R.T.: 0.000 min  
 Response: 451775  
 Conc: 0.11 ng/ml

Instrument :  
 ECD\_D  
 ClientSampleId :  
 41-RB



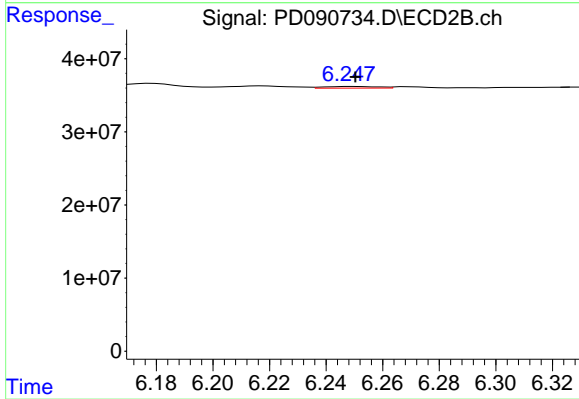
#17 4,4'-DDT

R.T.: 6.178 min  
 Delta R.T.: 0.004 min  
 Response: 11198895  
 Conc: 0.32 ng/ml



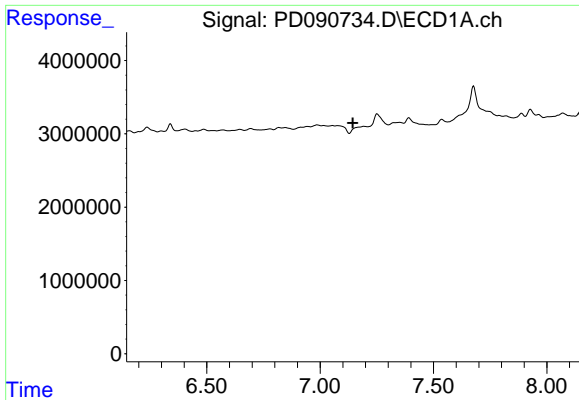
#18 Endrin aldehyde

R.T.: 6.915 min  
 Delta R.T.: 0.006 min  
 Response: 322788  
 Conc: 0.09 ng/ml



#18 Endrin aldehyde

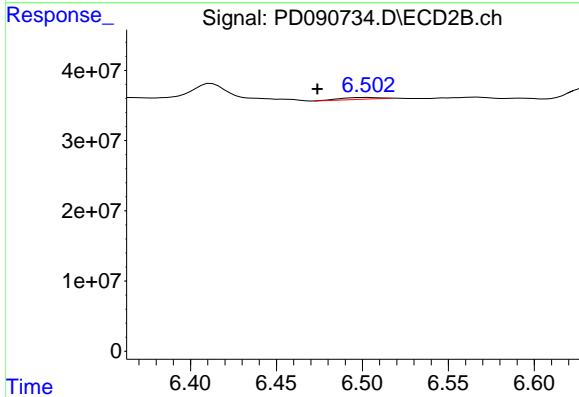
R.T.: 6.250 min  
 Delta R.T.: 0.000 min  
 Response: 3013330  
 Conc: 0.11 ng/ml



#19 Endosulfan Sulfate

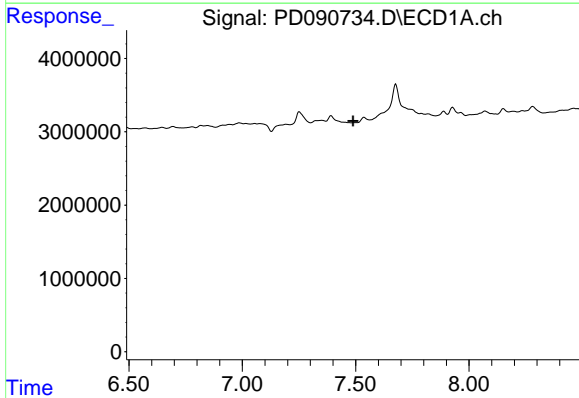
R.T.: 0.000 min  
 Exp R.T. : 7.145 min  
 Response: 0  
 Conc: N.D.

Instrument :  
 ECD\_D  
 ClientSampleId :  
 41-RB



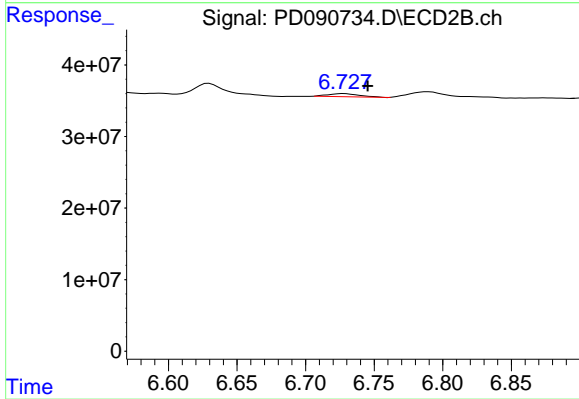
#19 Endosulfan Sulfate

R.T.: 6.503 min  
 Delta R.T.: 0.029 min  
 Response: 3712684  
 Conc: 0.10 ng/ml



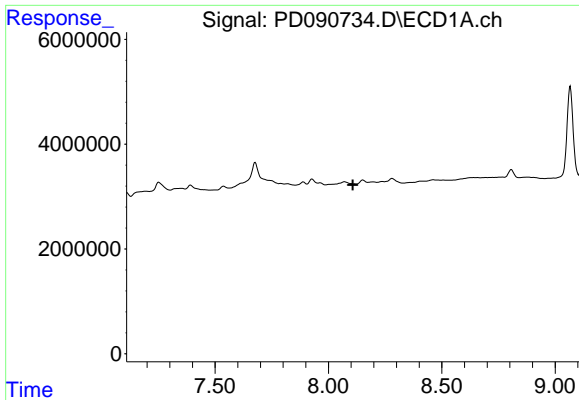
#20 Methoxychlor

R.T.: 0.000 min  
 Exp R.T. : 7.488 min  
 Response: 0  
 Conc: N.D.



#20 Methoxychlor

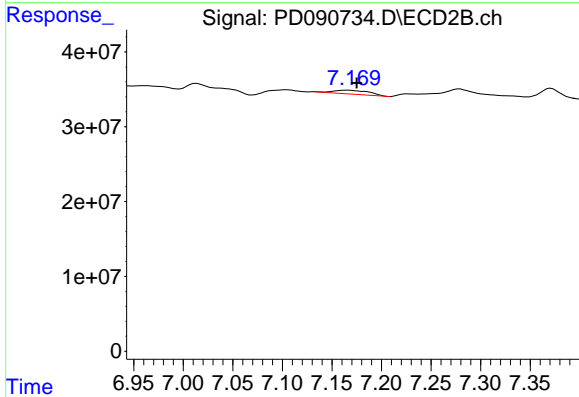
R.T.: 6.728 min  
 Delta R.T.: -0.017 min  
 Response: 6938648  
 Conc: 0.40 ng/ml



#22 Mirex

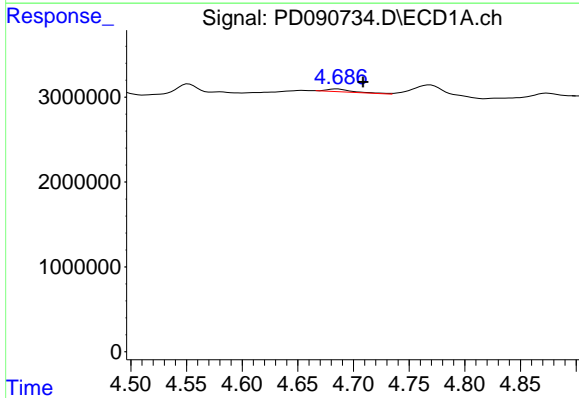
R.T.: 0.000 min  
 Exp R.T.: 8.107 min  
 Response: 0  
 Conc: N.D.

Instrument :  
 ECD\_D  
 ClientSampleId :  
 41-RB



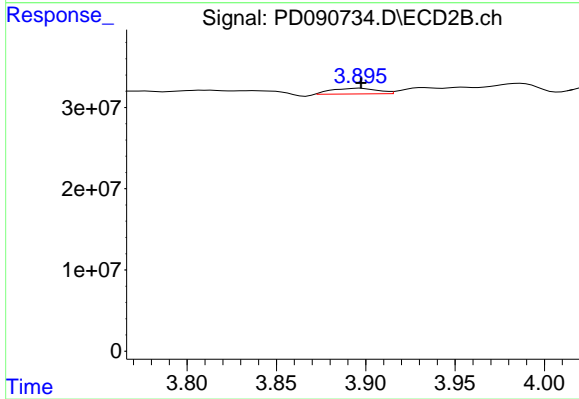
#22 Mirex

R.T.: 7.165 min  
 Delta R.T.: -0.010 min  
 Response: 12916153  
 Conc: 0.50 ng/ml



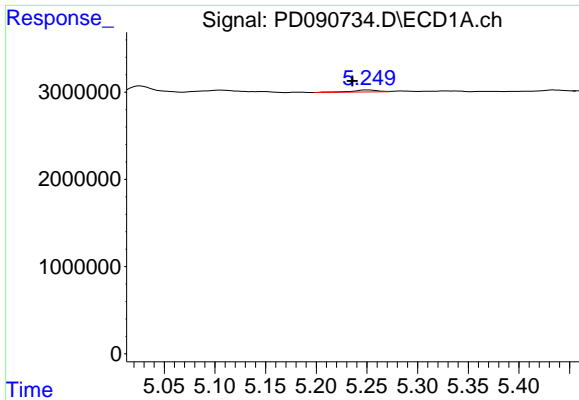
#23 Chlordane-1

R.T.: 4.685 min  
 Delta R.T.: -0.024 min  
 Response: 538534  
 Conc: 2.85 ng/ml



#23 Chlordane-1

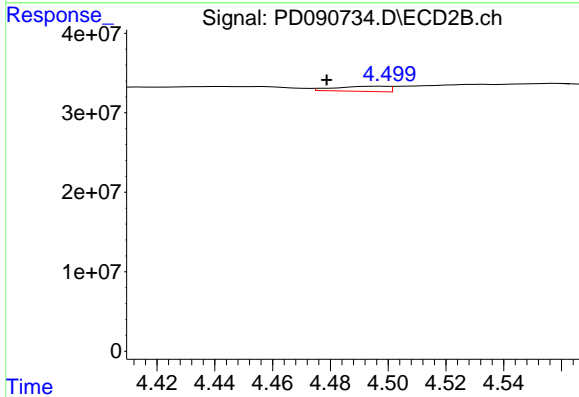
R.T.: 3.897 min  
 Delta R.T.: 0.000 min  
 Response: 12398133  
 Conc: 9.95 ng/ml



#24 Chlordane-2

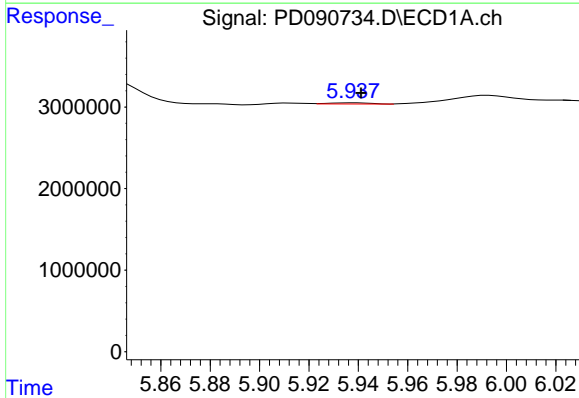
R.T.: 5.251 min  
 Delta R.T.: 0.015 min  
 Response: 418722  
 Conc: 2.17 ng/ml

Instrument :  
 ECD\_D  
 ClientSampleId :  
 41-RB



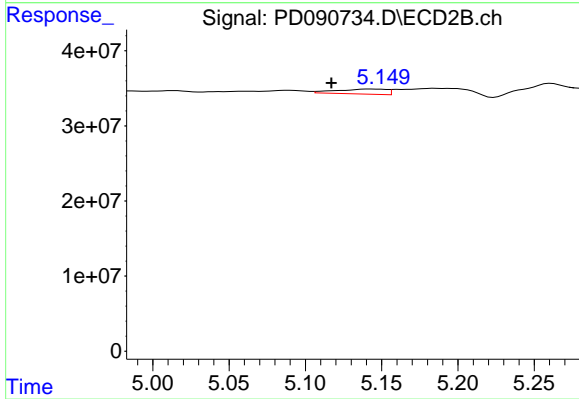
#24 Chlordane-2

R.T.: 4.497 min  
 Delta R.T.: 0.018 min  
 Response: 8060797  
 Conc: 6.18 ng/ml



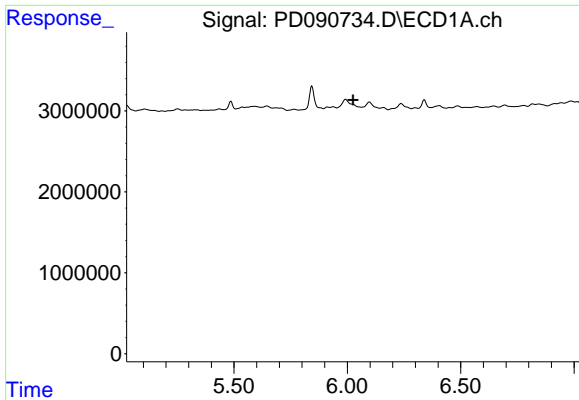
#25 Chlordane-3

R.T.: 5.938 min  
 Delta R.T.: -0.003 min  
 Response: 165690  
 Conc: 0.22 ng/ml



#25 Chlordane-3

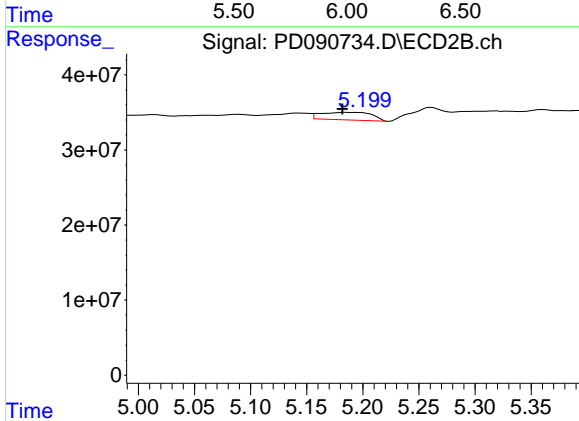
R.T.: 5.143 min  
 Delta R.T.: 0.026 min  
 Response: 15256482  
 Conc: 3.92 ng/ml



#26 Chlordane-4

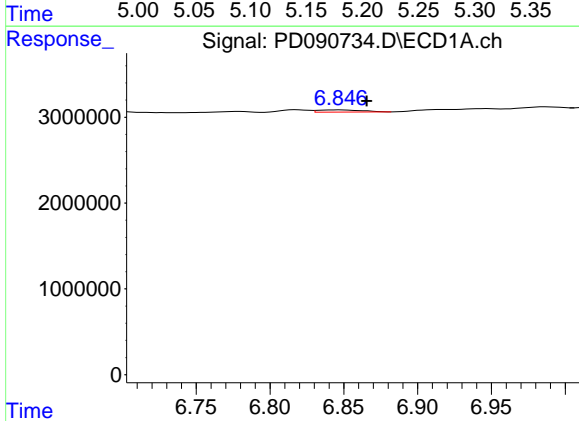
R.T.: 0.000 min  
 Exp R.T.: 6.025 min  
 Response: 0  
 Conc: N.D.

Instrument :  
 ECD\_D  
 ClientSampleId :  
 41-RB



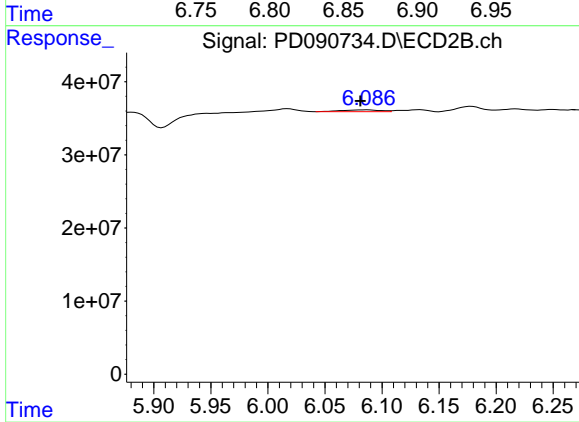
#26 Chlordane-4

R.T.: 5.184 min  
 Delta R.T.: 0.003 min  
 Response: 31803580  
 Conc: 9.52 ng/ml



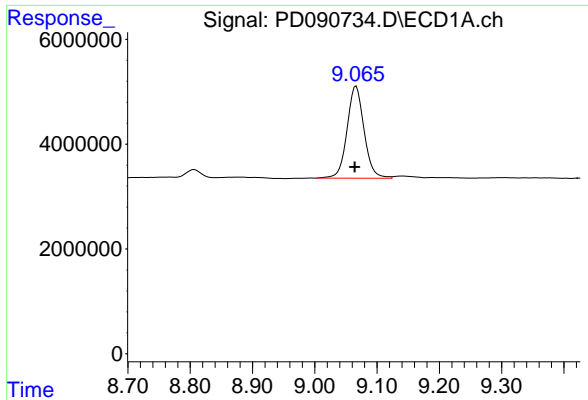
#27 Chlordane-5

R.T.: 6.848 min  
 Delta R.T.: -0.018 min  
 Response: 514579  
 Conc: 3.42 ng/ml



#27 Chlordane-5

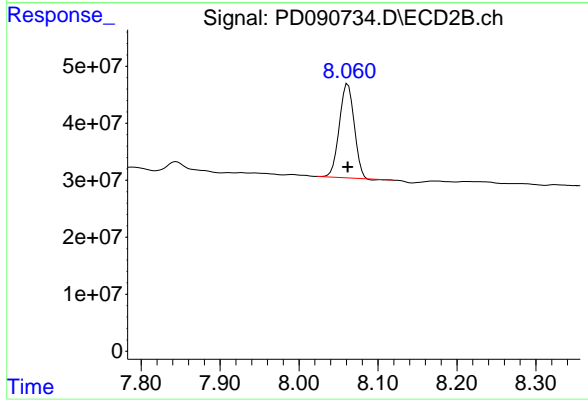
R.T.: 6.087 min  
 Delta R.T.: 0.006 min  
 Response: 6006161  
 Conc: 4.07 ng/ml



#28 Decachlorobiphenyl

R.T.: 9.066 min  
Delta R.T.: 0.002 min  
Response: 33499103  
Conc: 7.16 ng/ml

Instrument :  
ECD\_D  
ClientSampleId :  
41-RB



#28 Decachlorobiphenyl

R.T.: 8.062 min  
Delta R.T.: 0.000 min  
Response: 215014277  
Conc: 7.10 ng/ml