

Data Path : Z:\pestpcbsrv\HPCHEM1\ECD_D\Data\PD102125\
 Data File : PD090738.D
 Signal(s) : Signal #1: ECD1A.ch Signal #2: ECD2B.ch
 Acq On : 21 Oct 2025 17:48
 Operator : AR\AJ
 Sample : Q3376-02
 Misc :
 ALS Vial : 16 Sample Multiplier: 1

Instrument :
 ECD_D
 ClientSampleId :
 PR132-DP01-20251016

Integration File signal 1: autoint1.e
 Integration File signal 2: autoint2.e
 Quant Time: Oct 23 13:11:30 2025
 Quant Method : Z:\pestpcbsrv\HPCHEM1\ECD_D\Method\PD101725.M
 Quant Title : GC Extractables
 QLast Update : Fri Oct 17 17:43:28 2025
 Response via : Initial Calibration
 Integrator: ChemStation

Volume Inj. : 1 µl
 Signal #1 Phase : ZB-MR2 Signal #2 Phase: ZB-MR2
 Signal #1 Info : 30M x 0.32mm x0.5 Signal #2 Info : 30M x 0.32mm x 0.25µm

Compound	RT#1	RT#2	Resp#1	Resp#2	ng/ml	ng/ml
System Monitoring Compounds						
1) SA Tetrachlo...	3.544	2.874	53691575	371.8E6	17.241	12.485 #
28) SA Decachlor...	9.068	8.061	51485730	324.8E6	11.006	10.722
Target Compounds						
2) A alpha-BHC	0.000	3.407f	0	21286625	N.D.	0.417 #
3) MA gamma-BHC...	0.000	3.721	0	1652639	N.D.	0.035 #
4) MA Heptachlor	4.945f	4.065	2543617	8303722	0.455	0.186 #
5) MB Aldrin	5.254	4.363	1291346	16992785	0.197	0.367 #
6) B beta-BHC	4.488f	4.040f	1135541	21306567	0.433	1.074 #
7) B delta-BHC	4.773	4.268	2069795	21672823	0.306	0.454 #
8) B Heptachlo...	5.676	4.860	1054762	45357268	0.182	1.064 #
9) A Endosulfan I	6.092f	5.252	3315681	25200496	0.599	0.640
11) B alpha-Chl...	5.997f	5.201f	26989233	68288733	4.367	1.583 #
12) B 4,4'-DDE	6.190	5.365	100.5E6	511.7E6	18.863	11.673 #
13) MA Dieldrin	6.364f	5.502	-1053771	71981771	N.D.	1.629
14) MA Endrin	6.568	5.784	2143460	-9628847	0.433	N.D. #
17) MA 4,4'-DDT	6.991f	6.170	4396556	54669074	1.070	1.559 #
18) B Endrin al...	6.894f	0.000	79148	0	0.022	N.D. #
19) B Endosulfa...	7.163f	6.475	790850	43442318	0.171	1.212 #
20) A Methoxychlor	0.000	6.727f	0	27784979	N.D.	1.594 #
21) B Endrin ke...	7.613	6.961f	6103663	13448703	1.256	0.357 #
22) Mirex	0.000	7.175	0	12289962	N.D.	0.478 #
23) Chlordane-1	4.712	3.889	393918	41749722	2.085	33.500 #
24) Chlordane-2	5.254	4.500f	1291346	12296976	6.686	9.426 #
25) Chlordane-3	0.000	5.116	0	31310255	N.D.	8.046 #
26) Chlordane-4	5.997f	5.201	26989233	68288733	27.856	20.438 #

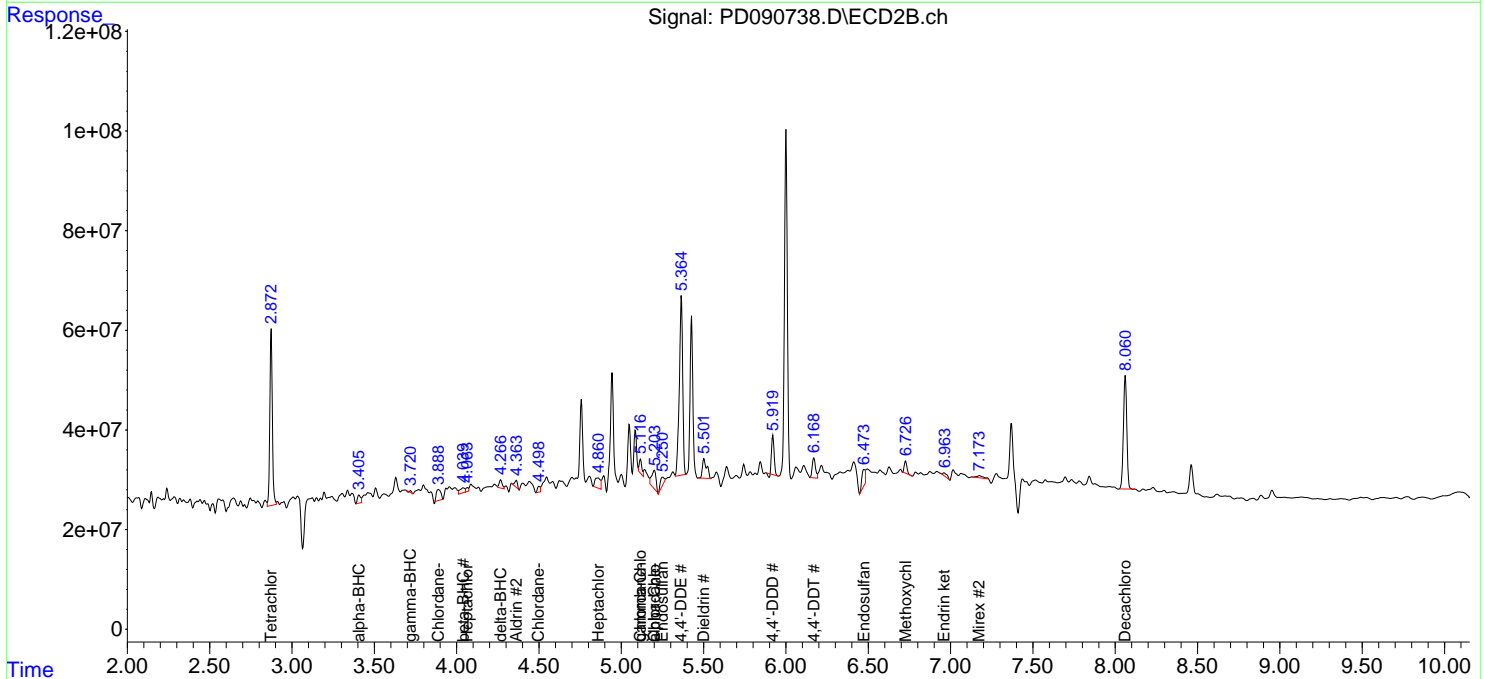
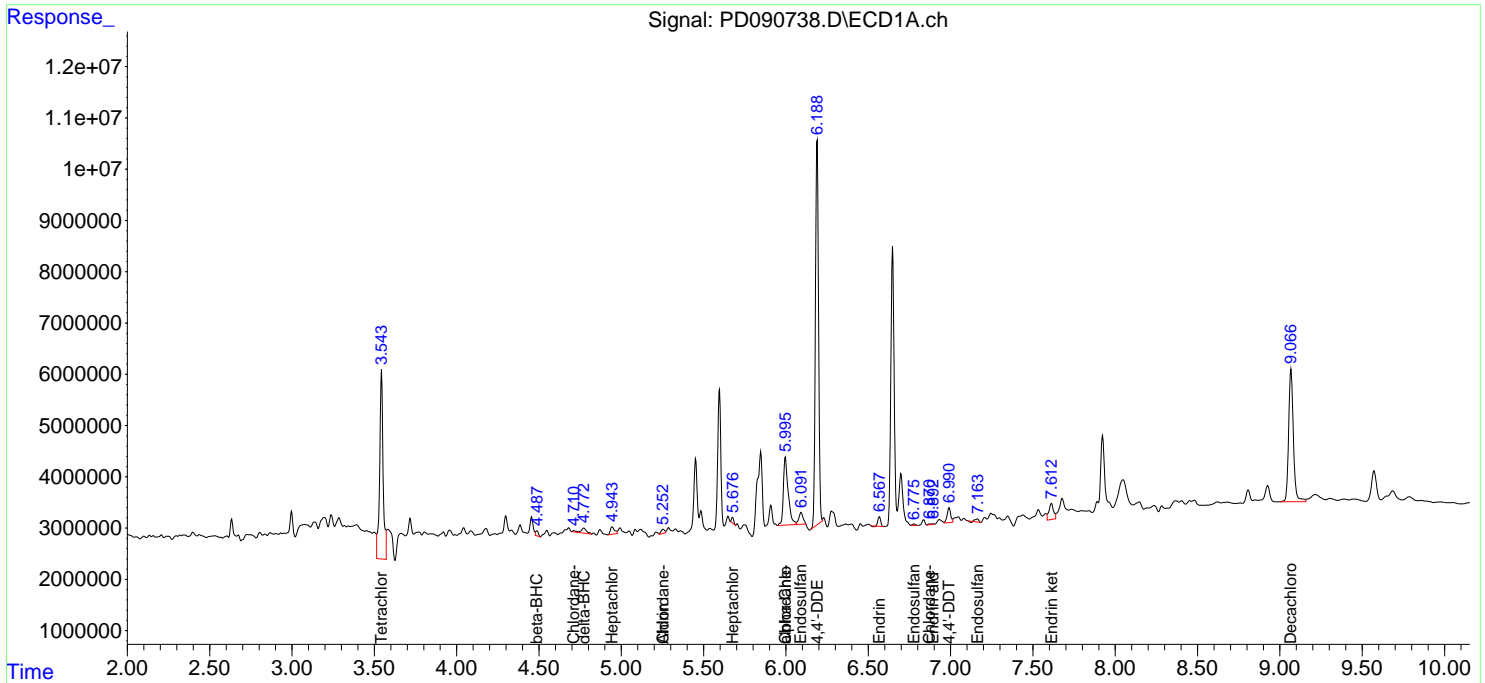
(f)=RT Delta > 1/2 Window (#)=Amounts differ by > 25% (m)=manual int.

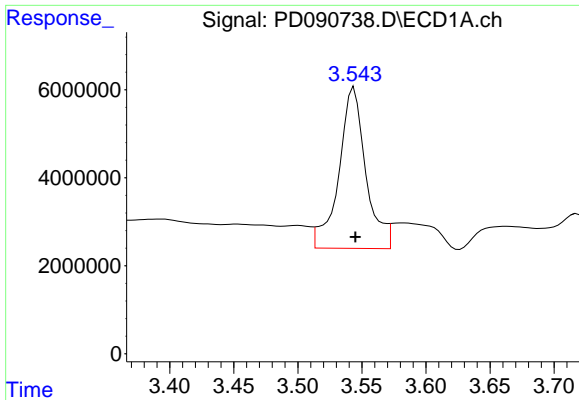
Data Path : Z:\pestpcbsrv\HPCHEM1\ECD_D\Data\PD102125\
 Data File : PD090738.D
 Signal(s) : Signal #1: ECD1A.ch Signal #2: ECD2B.ch
 Acq On : 21 Oct 2025 17:48
 Operator : AR\AJ
 Sample : Q3376-02
 Misc :
 ALS Vial : 16 Sample Multiplier: 1

Instrument :
 ECD_D
 ClientSampleId :
 PR132-DP01-20251016

Integration File signal 1: autoint1.e
 Integration File signal 2: autoint2.e
 Quant Time: Oct 23 13:11:30 2025
 Quant Method : Z:\pestpcbsrv\HPCHEM1\ECD_D\Method\PD101725.M
 Quant Title : GC Extractables
 QLast Update : Fri Oct 17 17:43:28 2025
 Response via : Initial Calibration
 Integrator: ChemStation

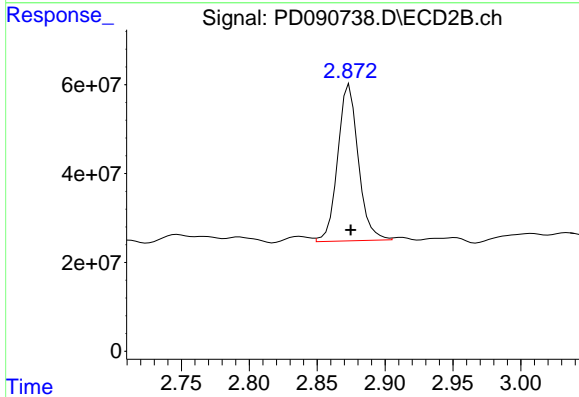
Volume Inj. : 1 µl
 Signal #1 Phase : ZB-MR1 Signal #2 Phase: ZB-MR2
 Signal #1 Info : 30M x 0.32mm x0.5 Signal #2 Info : 30M x 0.32mm x 0.25µm



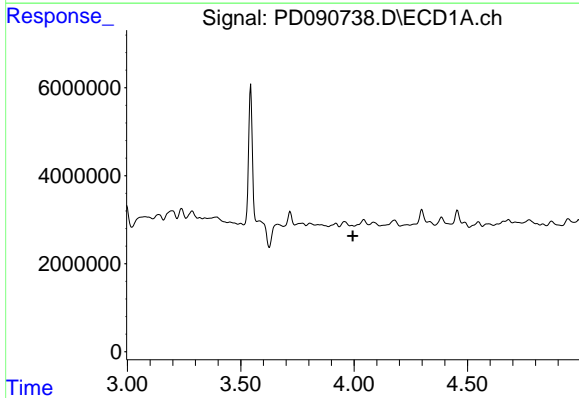


#1 Tetrachloro-m-xylene
 R.T.: 3.544 min
 Delta R.T.: -0.001 min
 Response: 53691575
 Conc: 17.24 ng/ml

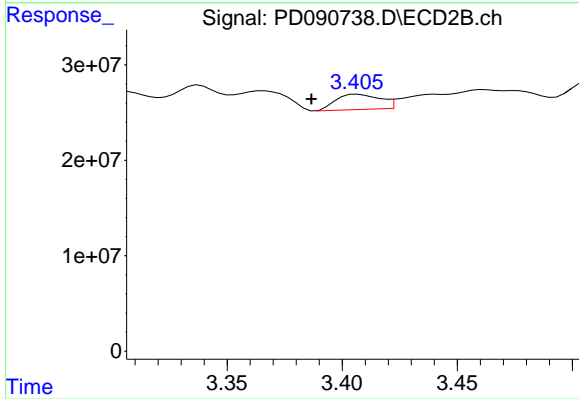
Instrument :
 ECD_D
 ClientSampleId :
 PR132-DP01-20251016



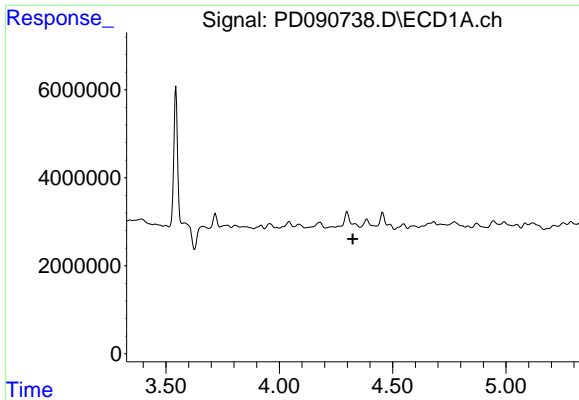
#1 Tetrachloro-m-xylene
 R.T.: 2.874 min
 Delta R.T.: 0.000 min
 Response: 371762184
 Conc: 12.48 ng/ml



#2 alpha-BHC
 R.T.: 0.000 min
 Exp R.T. : 3.994 min
 Response: 0
 Conc: N.D.



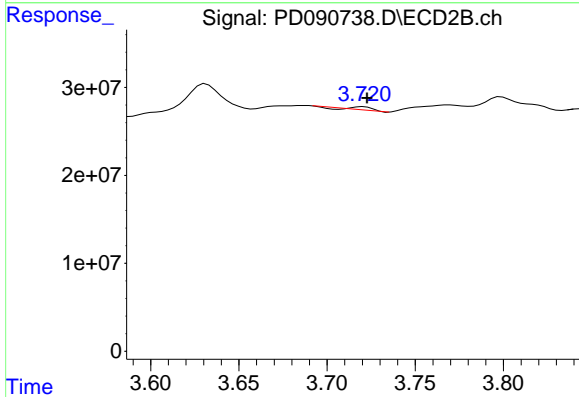
#2 alpha-BHC
 R.T.: 3.407 min
 Delta R.T.: 0.020 min
 Response: 21286625
 Conc: 0.42 ng/ml



#3 gamma-BHC (Lindane)

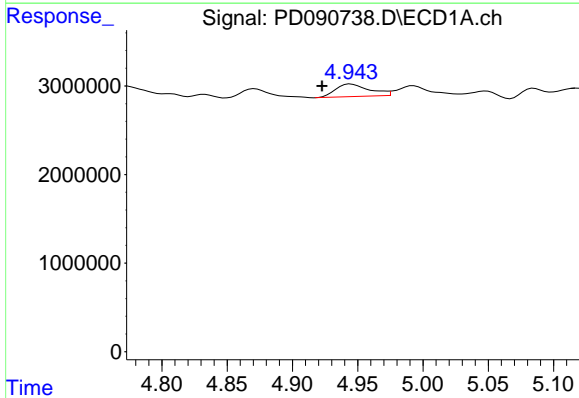
R.T.: 0.000 min
 Exp R.T.: 4.325 min
 Response: 0
 Conc: N.D.

Instrument :
 ECD_D
 ClientSampleId :
 PR132-DP01-20251016



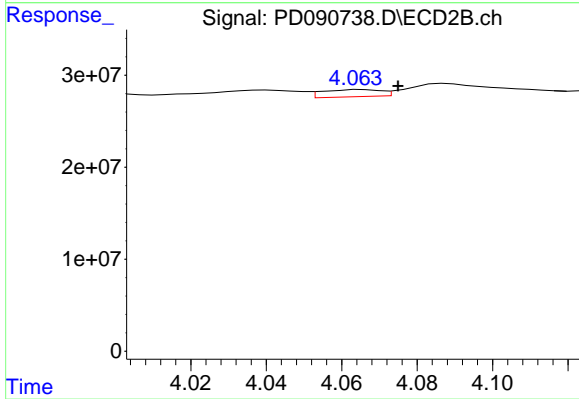
#3 gamma-BHC (Lindane)

R.T.: 3.721 min
 Delta R.T.: -0.002 min
 Response: 1652639
 Conc: 0.03 ng/ml



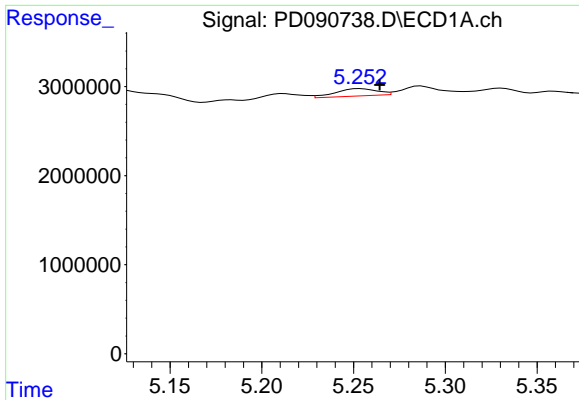
#4 Heptachlor

R.T.: 4.945 min
 Delta R.T.: 0.022 min
 Response: 2543617
 Conc: 0.46 ng/ml



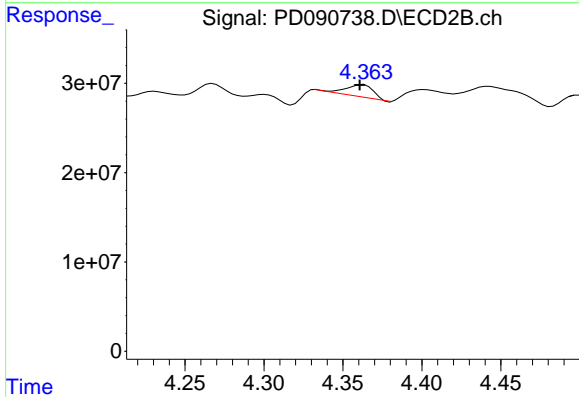
#4 Heptachlor

R.T.: 4.065 min
 Delta R.T.: -0.009 min
 Response: 8303722
 Conc: 0.19 ng/ml

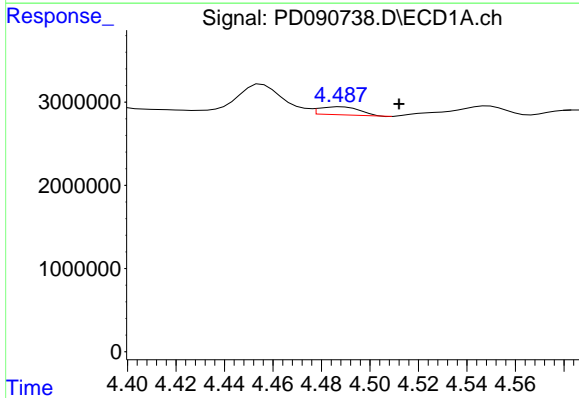


#5 Aldrin
 R.T.: 5.254 min
 Delta R.T.: -0.011 min
 Response: 1291346
 Conc: 0.20 ng/ml

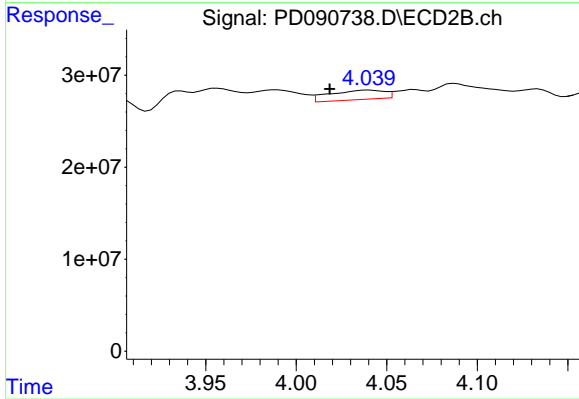
Instrument :
 ECD_D
 ClientSampleId :
 PR132-DP01-20251016



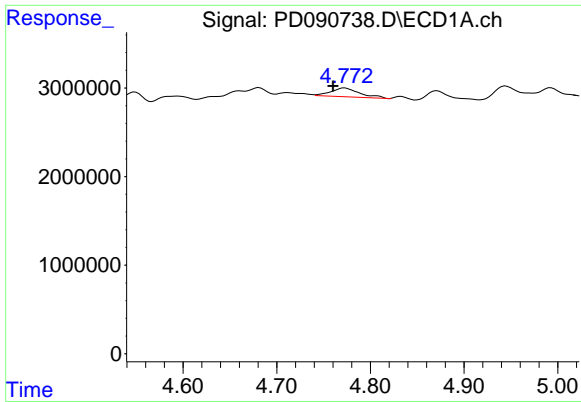
#5 Aldrin
 R.T.: 4.363 min
 Delta R.T.: 0.002 min
 Response: 16992785
 Conc: 0.37 ng/ml



#6 beta-BHC
 R.T.: 4.488 min
 Delta R.T.: -0.024 min
 Response: 1135541
 Conc: 0.43 ng/ml



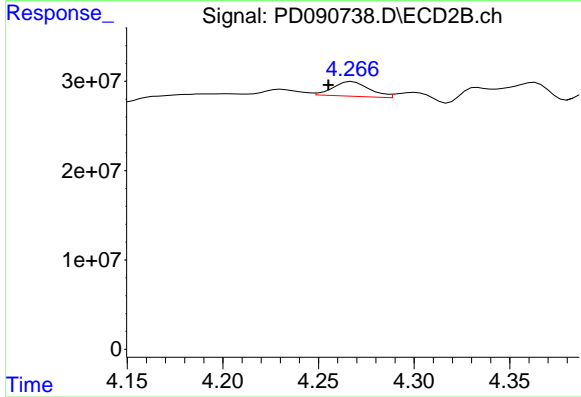
#6 beta-BHC
 R.T.: 4.040 min
 Delta R.T.: 0.021 min
 Response: 21306567
 Conc: 1.07 ng/ml



#7 delta-BHC

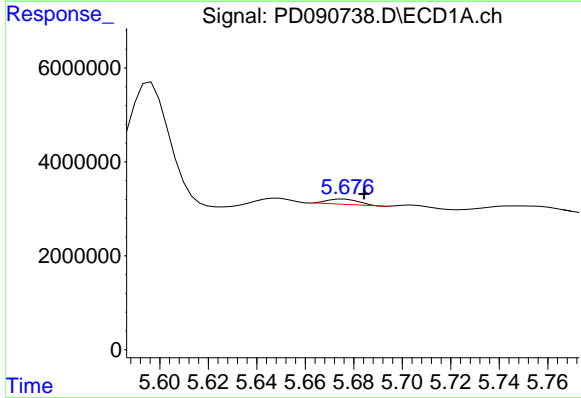
R.T.: 4.773 min
 Delta R.T.: 0.013 min
 Response: 2069795
 Conc: 0.31 ng/ml

Instrument :
 ECD_D
 ClientSampleId :
 PR132-DP01-20251016



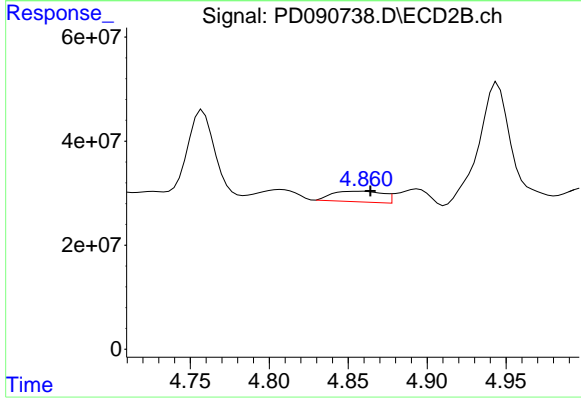
#7 delta-BHC

R.T.: 4.268 min
 Delta R.T.: 0.013 min
 Response: 21672823
 Conc: 0.45 ng/ml



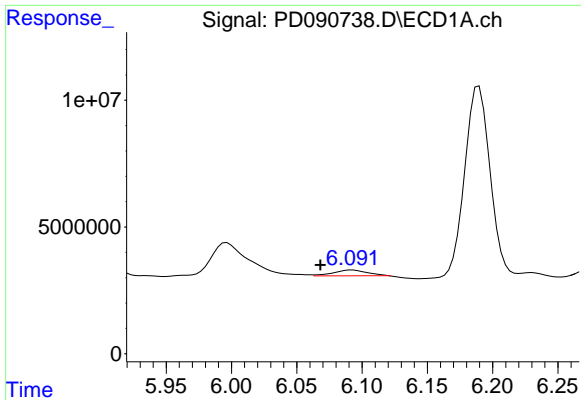
#8 Heptachlor epoxide

R.T.: 5.676 min
 Delta R.T.: -0.008 min
 Response: 1054762
 Conc: 0.18 ng/ml



#8 Heptachlor epoxide

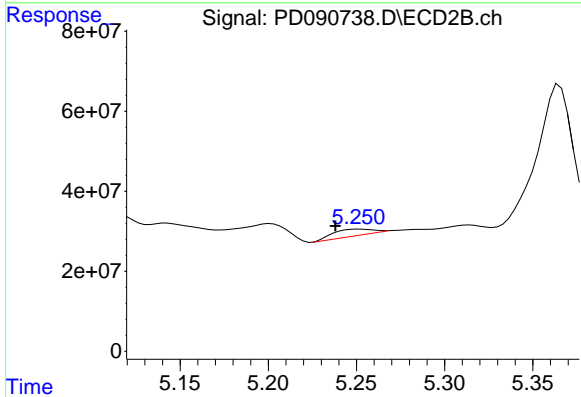
R.T.: 4.860 min
 Delta R.T.: -0.004 min
 Response: 45357268
 Conc: 1.06 ng/ml



#9 Endosulfan I

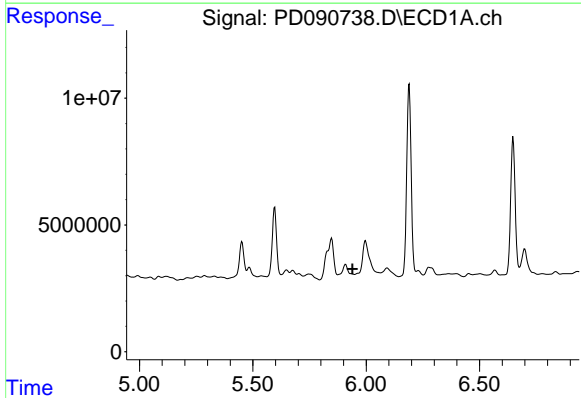
R.T.: 6.092 min
 Delta R.T.: 0.024 min
 Response: 3315681
 Conc: 0.60 ng/ml

Instrument :
 ECD_D
 ClientSampleId :
 PR132-DP01-20251016



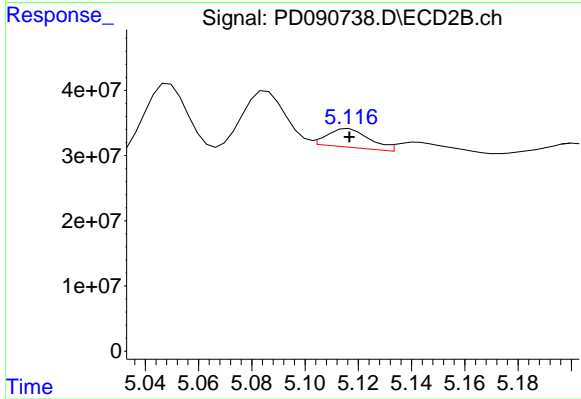
#9 Endosulfan I

R.T.: 5.252 min
 Delta R.T.: 0.014 min
 Response: 25200496
 Conc: 0.64 ng/ml



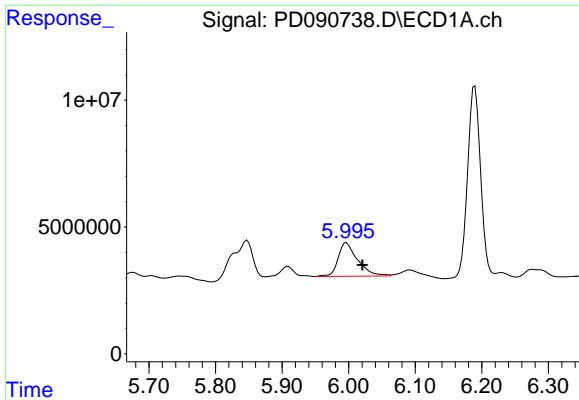
#10 gamma-Chlordane

R.T.: 5.909 min
 Delta R.T.: -0.031 min
 Response: -16838720
 Conc: N.D.



#10 gamma-Chlordane

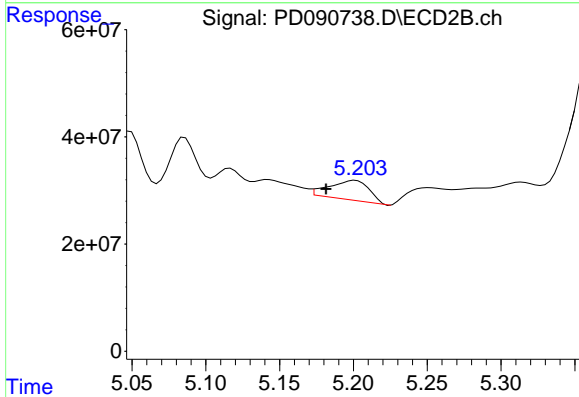
R.T.: 5.116 min
 Delta R.T.: 0.000 min
 Response: 31310255
 Conc: 0.70 ng/ml



#11 alpha-Chlordane

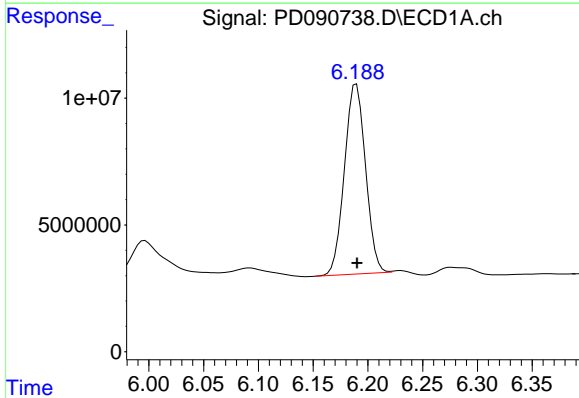
R.T.: 5.997 min
 Delta R.T.: -0.024 min
 Response: 26989233
 Conc: 4.37 ng/ml

Instrument :
 ECD_D
 ClientSampleId :
 PR132-DP01-20251016



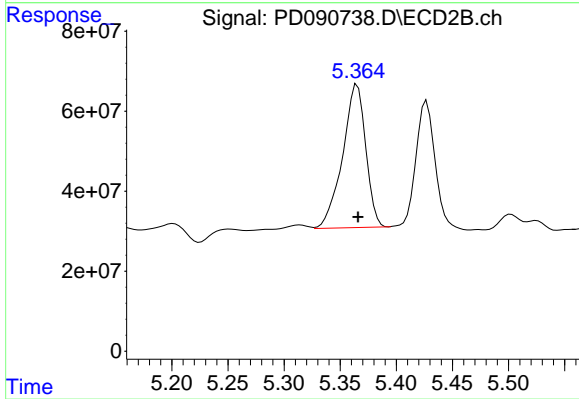
#11 alpha-Chlordane

R.T.: 5.201 min
 Delta R.T.: 0.020 min
 Response: 68288733
 Conc: 1.58 ng/ml



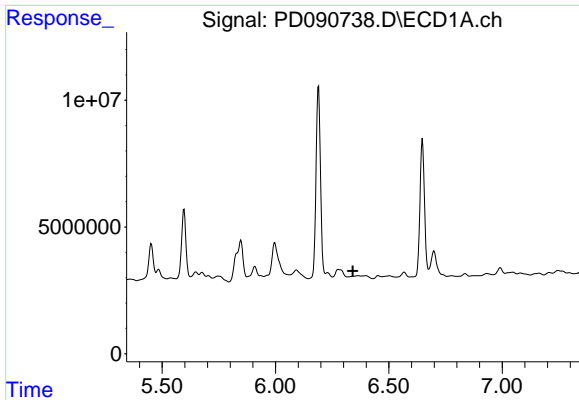
#12 4,4'-DDE

R.T.: 6.190 min
 Delta R.T.: 0.000 min
 Response: 100478096
 Conc: 18.86 ng/ml



#12 4,4'-DDE

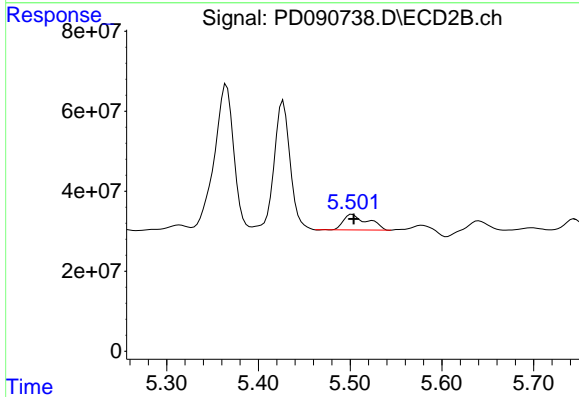
R.T.: 5.365 min
 Delta R.T.: 0.000 min
 Response: 511716496
 Conc: 11.67 ng/ml



#13 Dieldrin

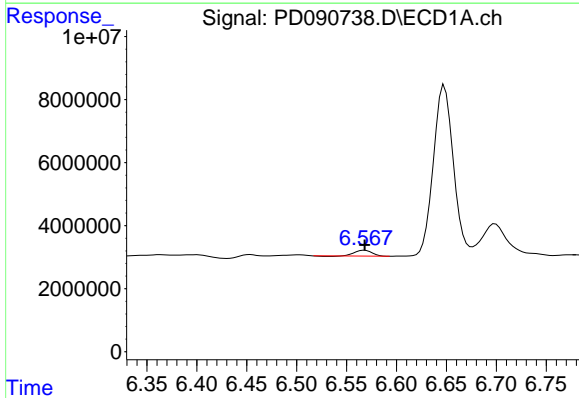
R.T.: 6.364 min
 Delta R.T.: 0.023 min
 Response: -1053771
 Conc: N.D.

Instrument :
 ECD_D
 ClientSampleId :
 PR132-DP01-20251016



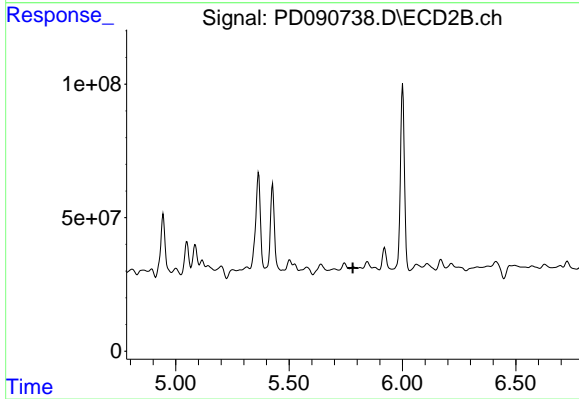
#13 Dieldrin

R.T.: 5.502 min
 Delta R.T.: -0.002 min
 Response: 71981771
 Conc: 1.63 ng/ml



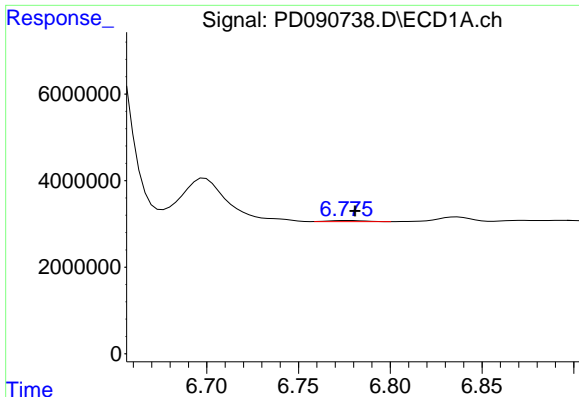
#14 Endrin

R.T.: 6.568 min
 Delta R.T.: 0.000 min
 Response: 2143460
 Conc: 0.43 ng/ml



#14 Endrin

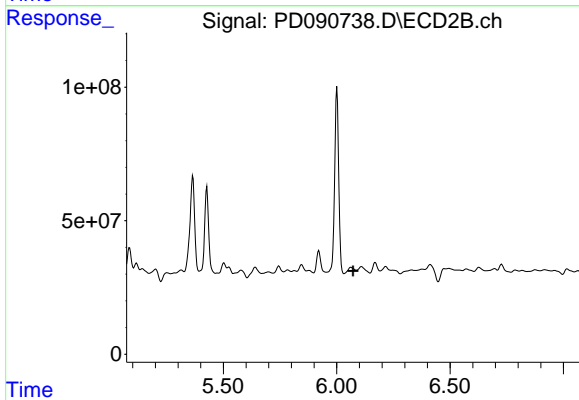
R.T.: 5.784 min
 Delta R.T.: 0.003 min
 Response: -9628847
 Conc: N.D.



#15 Endosulfan II

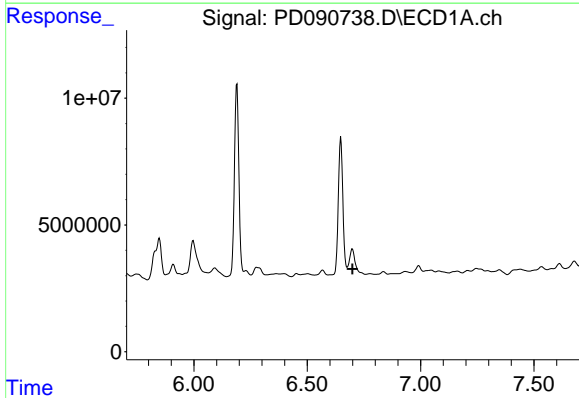
R.T.: 6.777 min
 Delta R.T.: -0.004 min
 Response: 332032
 Conc: 0.07 ng/ml

Instrument :
 ECD_D
 ClientSampleId :
 PR132-DP01-20251016



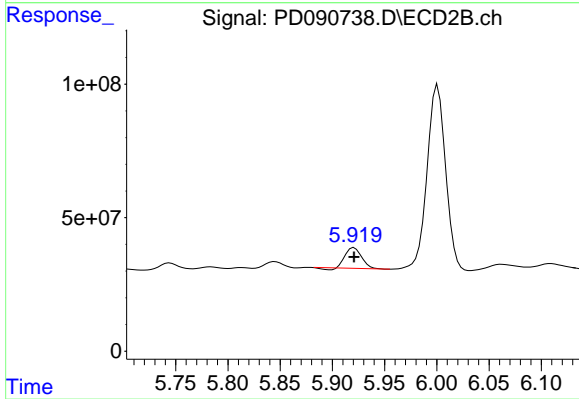
#15 Endosulfan II

R.T.: 6.063 min
 Delta R.T.: -0.010 min
 Response: -970300789
 Conc: N.D.



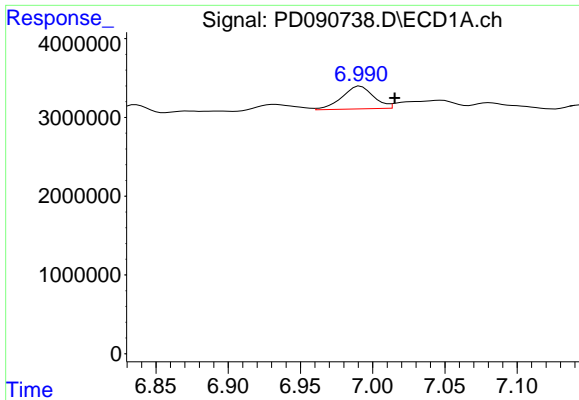
#16 4,4'-DDD

R.T.: 6.699 min
 Delta R.T.: -0.001 min
 Response: -78929868
 Conc: N.D.



#16 4,4'-DDD

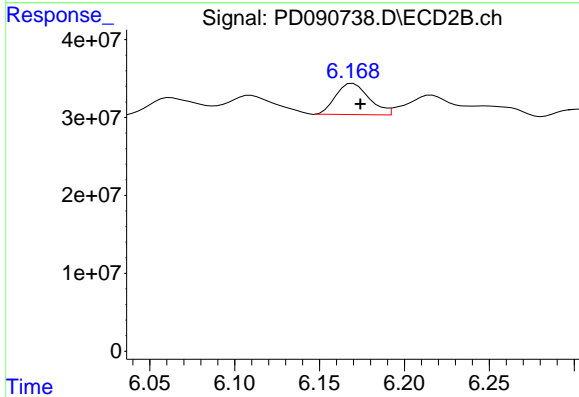
R.T.: 5.921 min
 Delta R.T.: 0.000 min
 Response: 80835611
 Conc: 2.22 ng/ml



#17 4,4'-DDT

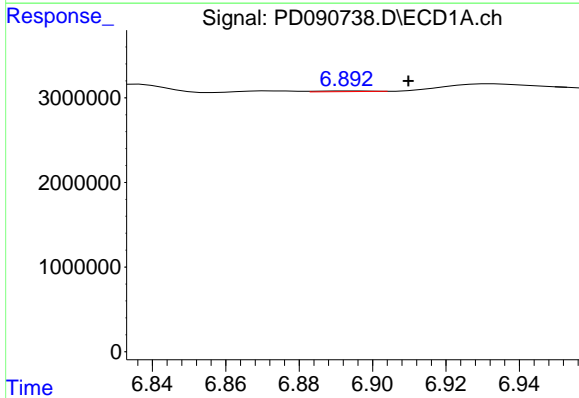
R.T.: 6.991 min
 Delta R.T.: -0.024 min
 Response: 4396556
 Conc: 1.07 ng/ml

Instrument :
 ECD_D
 ClientSampleId :
 PR132-DP01-20251016



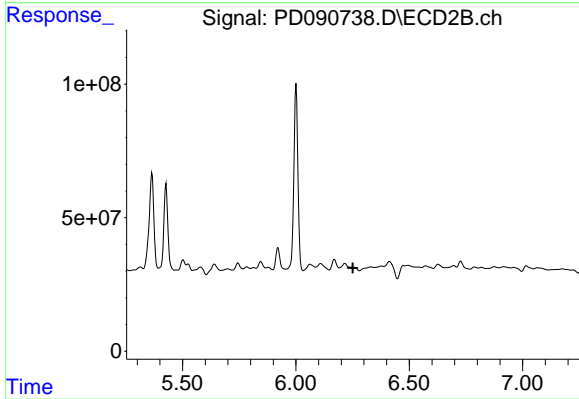
#17 4,4'-DDT

R.T.: 6.170 min
 Delta R.T.: -0.004 min
 Response: 54669074
 Conc: 1.56 ng/ml



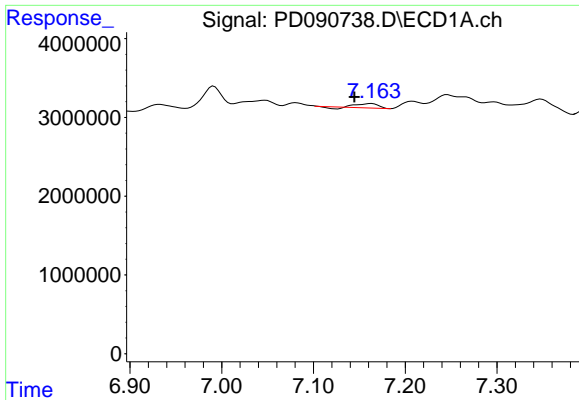
#18 Endrin aldehyde

R.T.: 6.894 min
 Delta R.T.: -0.016 min
 Response: 79148
 Conc: 0.02 ng/ml



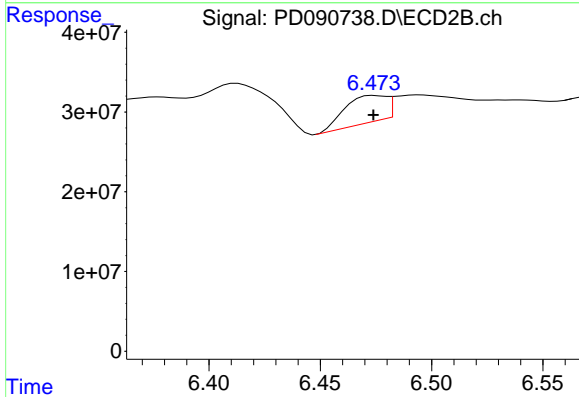
#18 Endrin aldehyde

R.T.: 0.000 min
 Exp R.T. : 6.250 min
 Response: 0
 Conc: N.D.

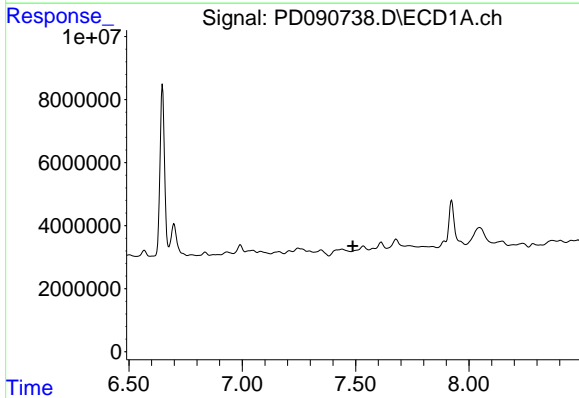


#19 Endosulfan Sulfate
 R.T.: 7.163 min
 Delta R.T.: 0.018 min
 Response: 790850
 Conc: 0.17 ng/ml

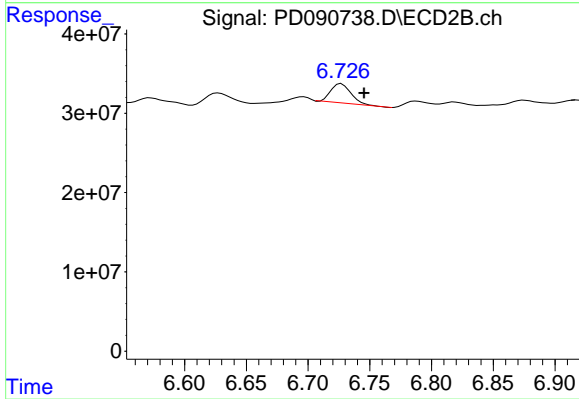
Instrument :
 ECD_D
 ClientSampleId :
 PR132-DP01-20251016



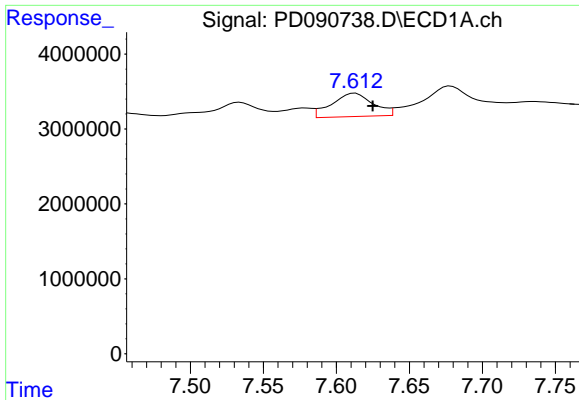
#19 Endosulfan Sulfate
 R.T.: 6.475 min
 Delta R.T.: 0.001 min
 Response: 43442318
 Conc: 1.21 ng/ml



#20 Methoxychlor
 R.T.: 0.000 min
 Exp R.T. : 7.488 min
 Response: 0
 Conc: N.D.



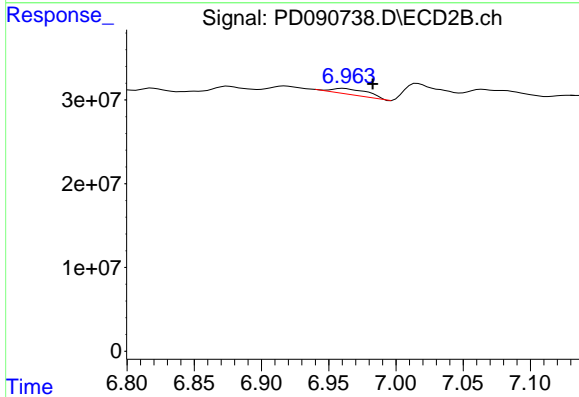
#20 Methoxychlor
 R.T.: 6.727 min
 Delta R.T.: -0.018 min
 Response: 27784979
 Conc: 1.59 ng/ml



#21 Endrin ketone

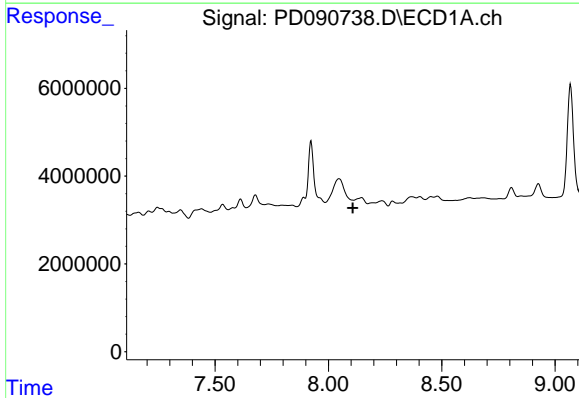
R.T.: 7.613 min
 Delta R.T.: -0.012 min
 Response: 6103663
 Conc: 1.26 ng/ml

Instrument :
 ECD_D
 ClientSampleId :
 PR132-DP01-20251016



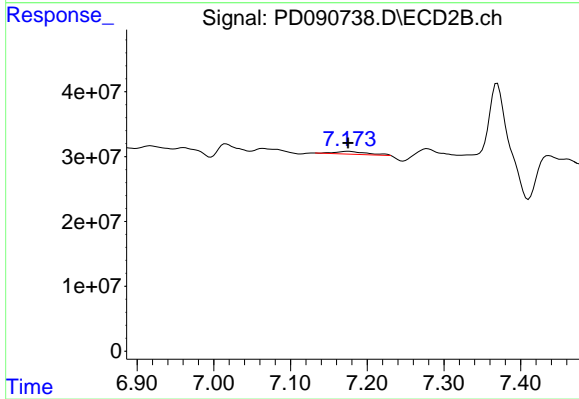
#21 Endrin ketone

R.T.: 6.961 min
 Delta R.T.: -0.022 min
 Response: 13448703
 Conc: 0.36 ng/ml



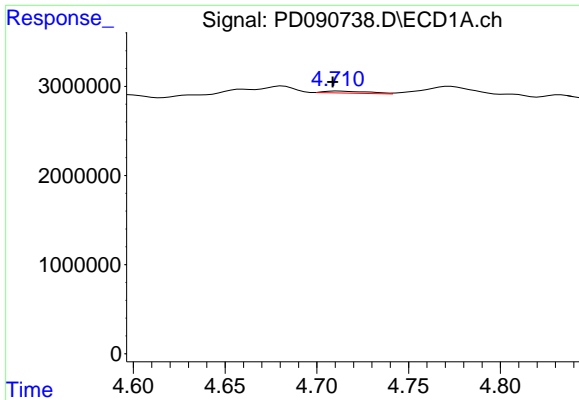
#22 Mirex

R.T.: 0.000 min
 Exp R.T. : 8.107 min
 Response: 0
 Conc: N.D.



#22 Mirex

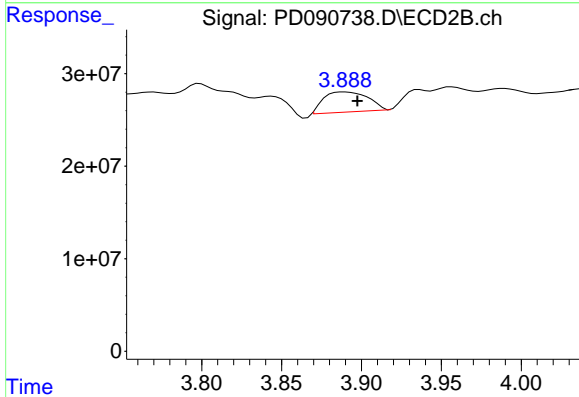
R.T.: 7.175 min
 Delta R.T.: 0.000 min
 Response: 12289962
 Conc: 0.48 ng/ml



#23 Chlordane-1

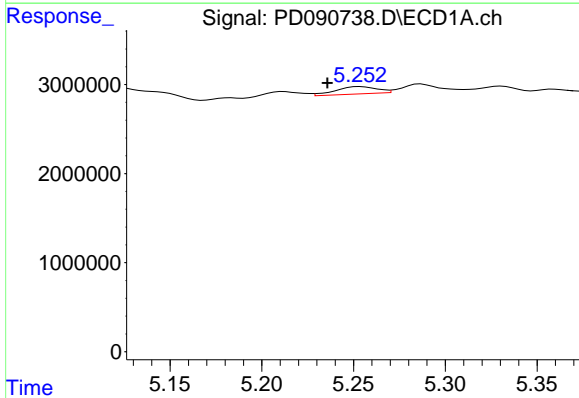
R.T.: 4.712 min
 Delta R.T.: 0.003 min
 Response: 393918
 Conc: 2.08 ng/ml

Instrument : ECD_D
 ClientSampleId : PR132-DP01-20251016



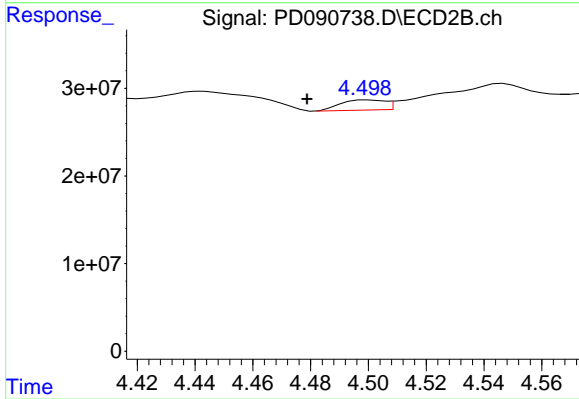
#23 Chlordane-1

R.T.: 3.889 min
 Delta R.T.: -0.008 min
 Response: 41749722
 Conc: 33.50 ng/ml



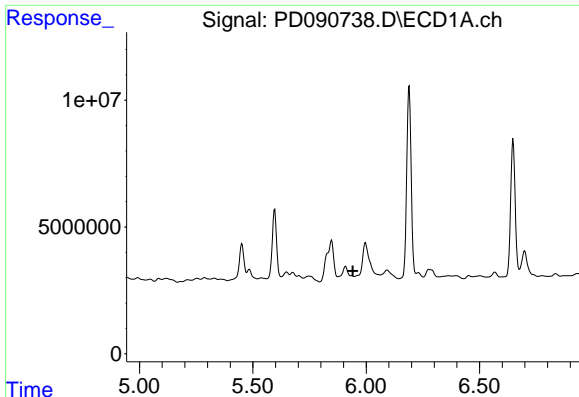
#24 Chlordane-2

R.T.: 5.254 min
 Delta R.T.: 0.018 min
 Response: 1291346
 Conc: 6.69 ng/ml



#24 Chlordane-2

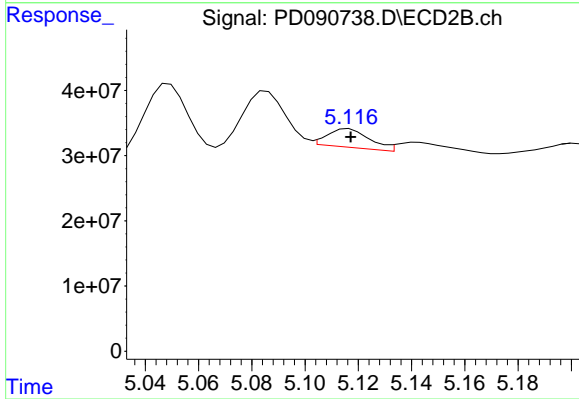
R.T.: 4.500 min
 Delta R.T.: 0.021 min
 Response: 12296976
 Conc: 9.43 ng/ml



#25 Chlordane-3

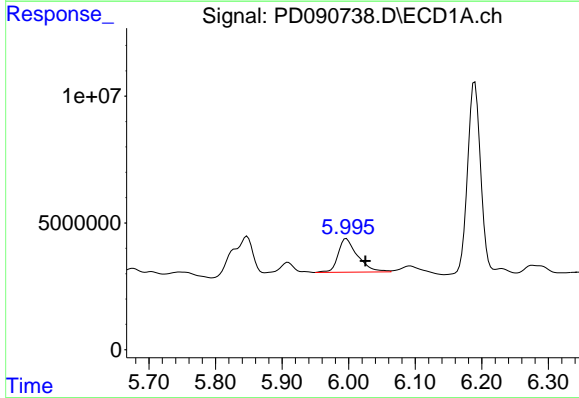
R.T.: 0.000 min
Exp R.T.: 5.941 min
Response: 0
Conc: N.D.

Instrument :
ECD_D
ClientSampleId :
PR132-DP01-20251016



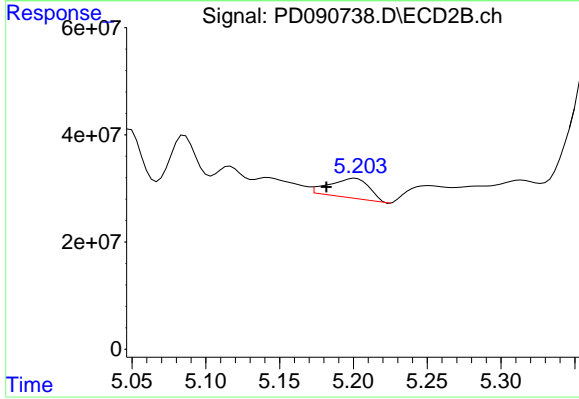
#25 Chlordane-3

R.T.: 5.116 min
Delta R.T.: 0.000 min
Response: 31310255
Conc: 8.05 ng/ml



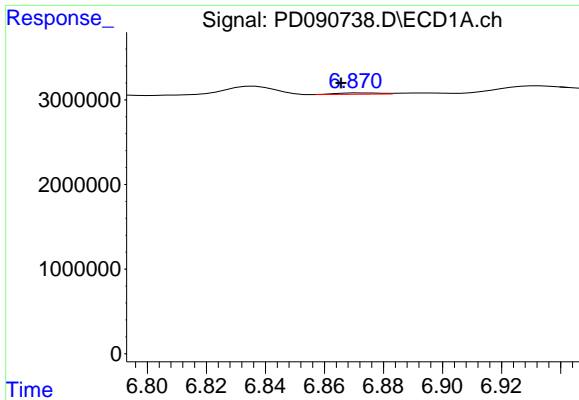
#26 Chlordane-4

R.T.: 5.997 min
Delta R.T.: -0.029 min
Response: 26989233
Conc: 27.86 ng/ml



#26 Chlordane-4

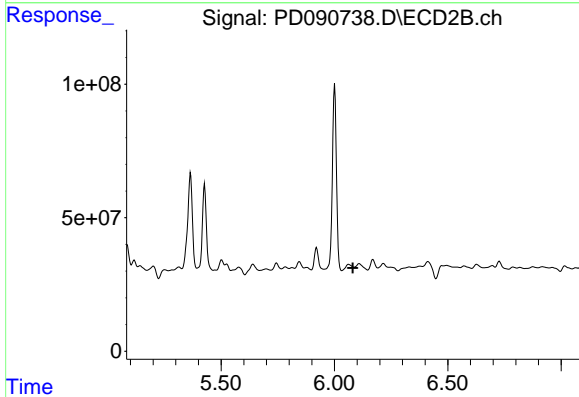
R.T.: 5.201 min
Delta R.T.: 0.019 min
Response: 68288733
Conc: 20.44 ng/ml



#27 Chlordane-5

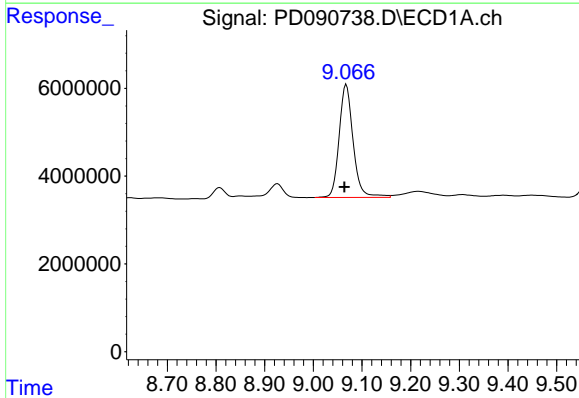
R.T.: 6.873 min
 Delta R.T.: 0.008 min
 Response: 154799
 Conc: 1.03 ng/ml

Instrument :
 ECD_D
 ClientSampleId :
 PR132-DP01-20251016



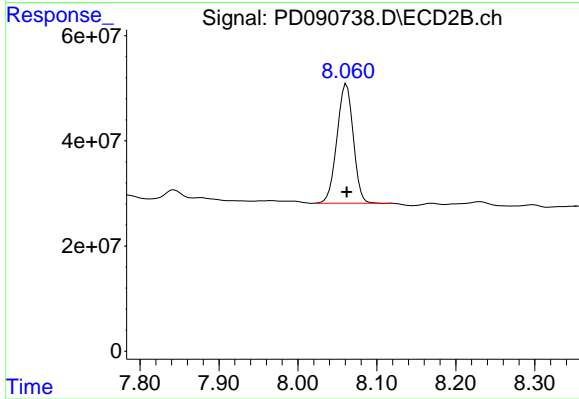
#27 Chlordane-5

R.T.: 6.063 min
 Delta R.T.: -0.018 min
 Response: -970300789
 Conc: N.D.



#28 Decachlorobiphenyl

R.T.: 9.068 min
 Delta R.T.: 0.004 min
 Response: 51485730
 Conc: 11.01 ng/ml



#28 Decachlorobiphenyl

R.T.: 8.061 min
 Delta R.T.: 0.000 min
 Response: 324796932
 Conc: 10.72 ng/ml