

Data Path : Z:\pestpcbsrv\HPCHEM1\ECD_D\Data\PD102125\
 Data File : PD090741.D
 Signal(s) : Signal #1: ECD1A.ch Signal #2: ECD2B.ch
 Acq On : 21 Oct 2025 18:29
 Operator : AR\AJ
 Sample : Q3376-05
 Misc :
 ALS Vial : 19 Sample Multiplier: 1

Instrument :
 ECD_D
 ClientSampleId :
 PR132-S12-020047-20251016

Integration File signal 1: autoint1.e
 Integration File signal 2: autoint2.e
 Quant Time: Oct 23 13:12:01 2025
 Quant Method : Z:\pestpcbsrv\HPCHEM1\ECD_D\Method\PD101725.M
 Quant Title : GC Extractables
 QLast Update : Fri Oct 17 17:43:28 2025
 Response via : Initial Calibration
 Integrator: ChemStation

Volume Inj. : 1 µl
 Signal #1 Phase : ZB-MR2 Signal #2 Phase: ZB-MR2
 Signal #1 Info : 30M x 0.32mm x0.5 Signal #2 Info : 30M x 0.32mm x 0.25µm

Compound	RT#1	RT#2	Resp#1	Resp#2	ng/ml	ng/ml
System Monitoring Compounds						
1) SA Tetrachlo...	3.545	2.874	96021095	521.0E6	30.834	17.497 #
28) SA Decachlor...	9.067	8.062	65685073	435.9E6	14.041	14.390
Target Compounds						
2) A alpha-BHC	0.000	3.370f	0	2200232	N.D.	0.043 #
3) MA gamma-BHC...	4.302f	3.729	712785	1235090	0.105	0.026 #
4) MA Heptachlor	4.947f	4.085	1165180	22665531	0.208	0.508 #
5) MB Aldrin	5.287f	4.368	925817	3744137	0.141	0.081 #
6) B beta-BHC	4.496f	4.033	729882	6948886	0.279	0.350 #
7) B delta-BHC	4.772	4.266	2410000	6291658	0.356	0.132 #
8) B Heptachlo...	5.705f	4.865	1096729	536709	0.189	0.013 #
9) A Endosulfan I	6.097f	0.000	728382	0	0.132	N.D. #
10) B gamma-Chl...	5.943	5.118	993761	10834329	0.168	0.241 #
11) B alpha-Chl...	5.998f	5.184	23992814	39065454	3.882	0.906 #
12) B 4,4'-DDE	6.191	5.366	3673773	25468821	0.690	0.581
13) MA Dieldrin	6.354	5.501	1414775	45556598	0.243	1.031 #
14) MA Endrin	6.569	5.786	1168402	-2169691	0.236	N.D. #
15) B Endosulfa...	0.000	6.059	0	1369422	N.D.	0.036 #
17) MA 4,4'-DDT	6.991f	6.171	2753137	27009276	0.670	0.770
18) B Endrin al...	6.937f	6.270f	1300471	4837912	0.355	0.175 #
19) B Endosulfa...	7.165f	6.472	405393	2099238	0.087	0.059 #
20) A Methoxychlor	0.000	6.728f	0	10300842	N.D.	0.591 #
21) B Endrin ke...	7.612	6.962f	1923332	4146991	0.396	0.110 #
22) Mirex	0.000	7.172	0	7619328	N.D.	0.297 #
23) Chlordane-1	0.000	3.896	0	8948583	N.D.	7.180 #
24) Chlordane-2	0.000	4.495	0	5414156	N.D.	4.150 #
25) Chlordane-3	5.943	5.118	993761	10834329	1.303	2.784 #
26) Chlordane-4	5.998f	5.184	23992814	39065454	24.763	11.692 #
27) Chlordane-5	6.837f	6.096	1800963	7309611	11.986	4.952 #

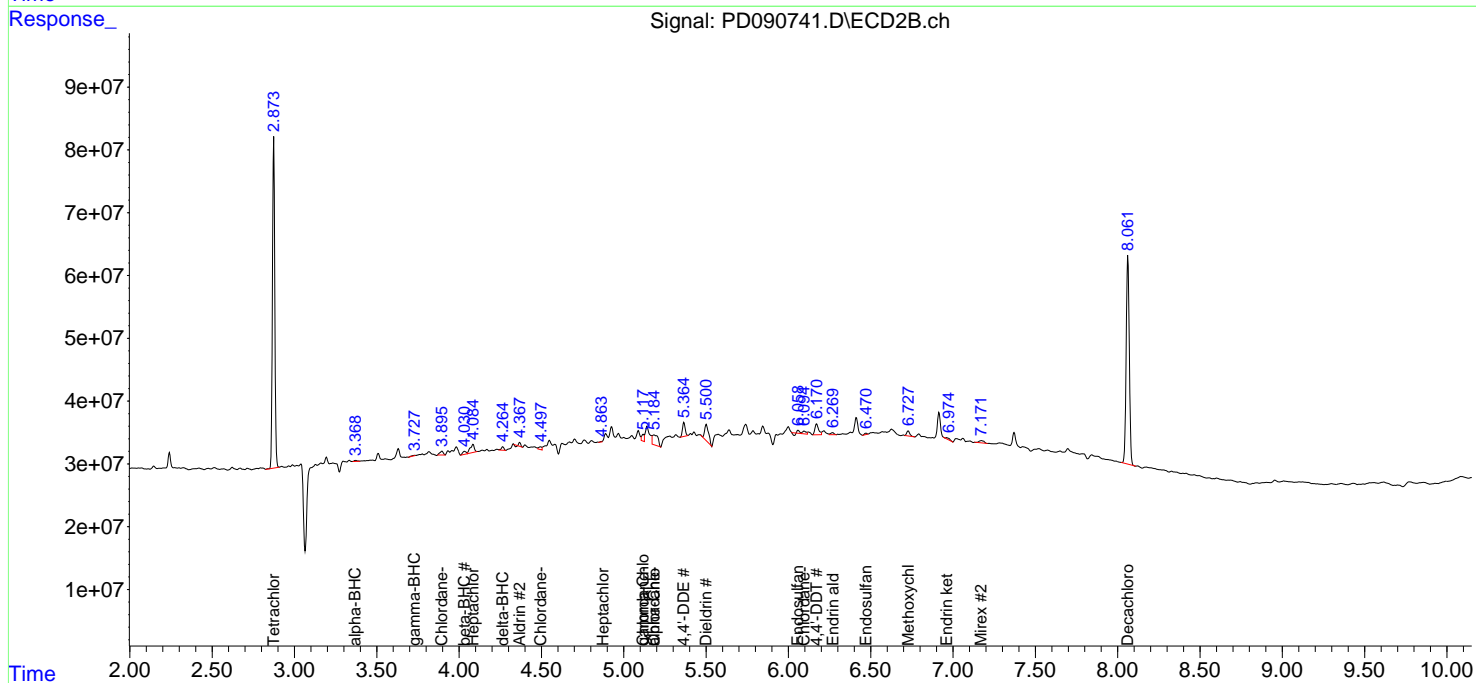
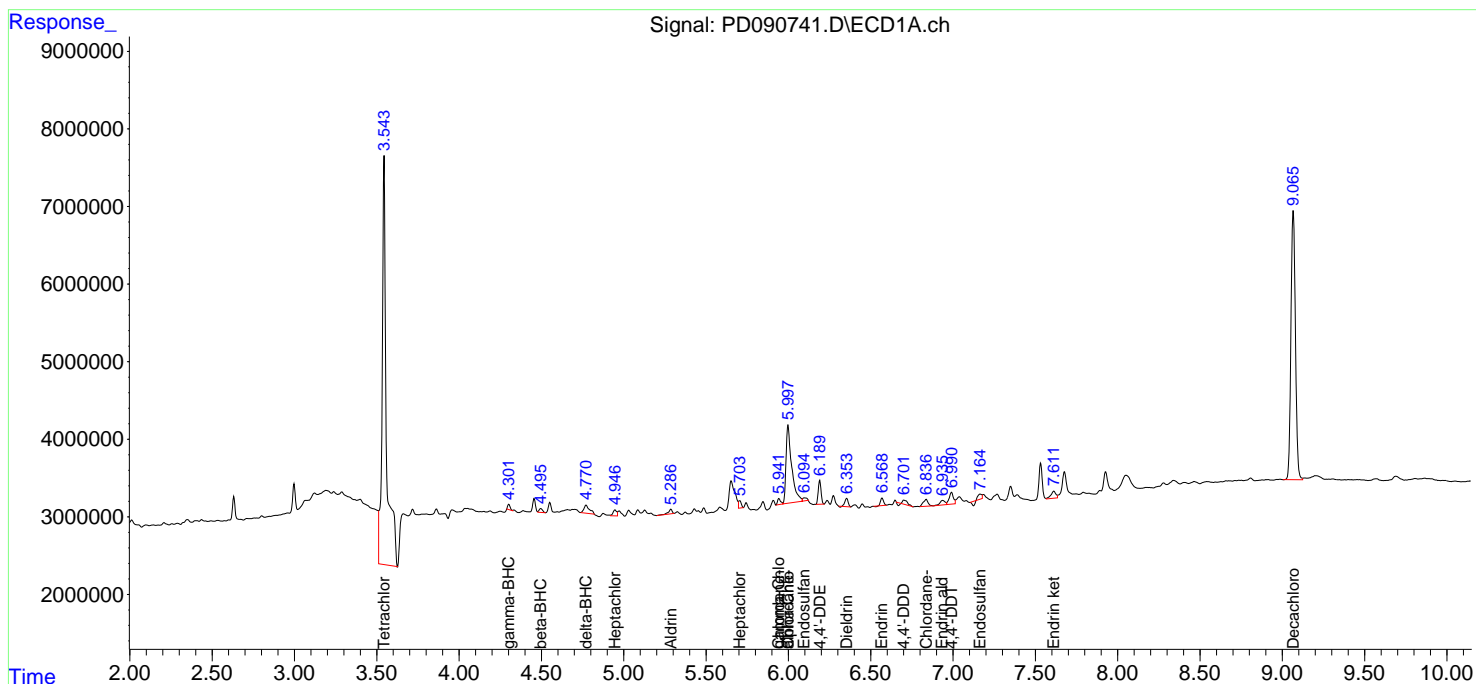
(f)=RT Delta > 1/2 Window (#)=Amounts differ by > 25% (m)=manual int.

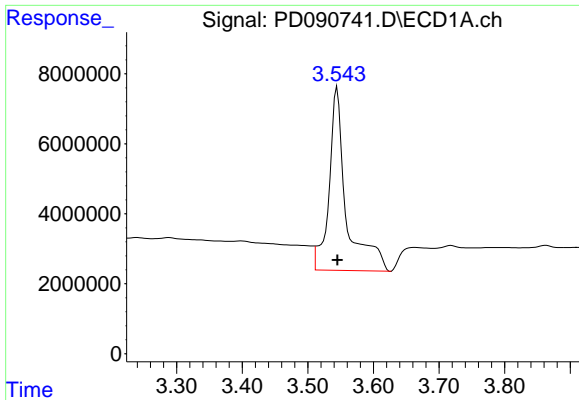
Data Path : Z:\pestpcbsrv\HPCHEM1\ECD_D\Data\PD102125\
 Data File : PD090741.D
 Signal(s) : Signal #1: ECD1A.ch Signal #2: ECD2B.ch
 Acq On : 21 Oct 2025 18:29
 Operator : AR\AJ
 Sample : Q3376-05
 Misc :
 ALS Vial : 19 Sample Multiplier: 1

Instrument :
 ECD_D
 ClientSampleId :
 PR132-S12-020047-20251016

Integration File signal 1: autoint1.e
 Integration File signal 2: autoint2.e
 Quant Time: Oct 23 13:12:01 2025
 Quant Method : Z:\pestpcbsrv\HPCHEM1\ECD_D\Method\PD101725.M
 Quant Title : GC Extractables
 QLast Update : Fri Oct 17 17:43:28 2025
 Response via : Initial Calibration
 Integrator: ChemStation

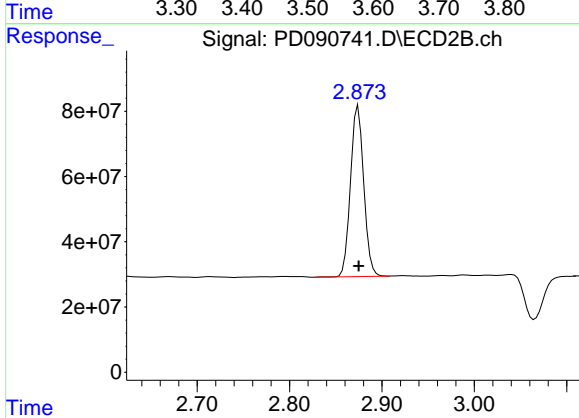
Volume Inj. : 1 µl
 Signal #1 Phase : ZB-MR1 Signal #2 Phase: ZB-MR2
 Signal #1 Info : 30M x 0.32mm x0.5 Signal #2 Info : 30M x 0.32mm x 0.25µm



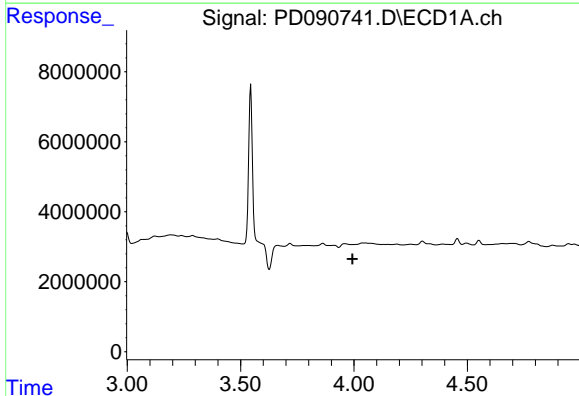


#1 Tetrachloro-m-xylene
 R.T.: 3.545 min
 Delta R.T.: 0.000 min
 Response: 96021095
 Conc: 30.83 ng/ml

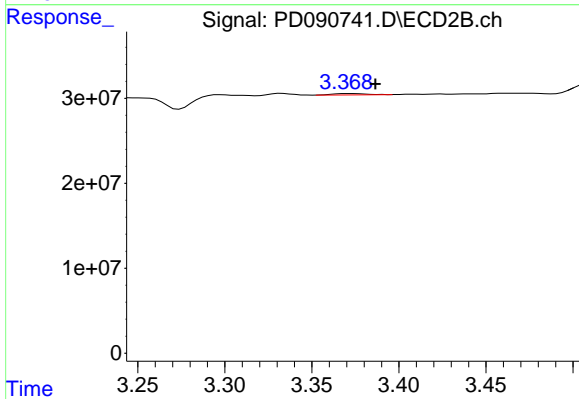
Instrument :
 ECD_D
 ClientSampleId :
 PR132-S12-020047-20251016



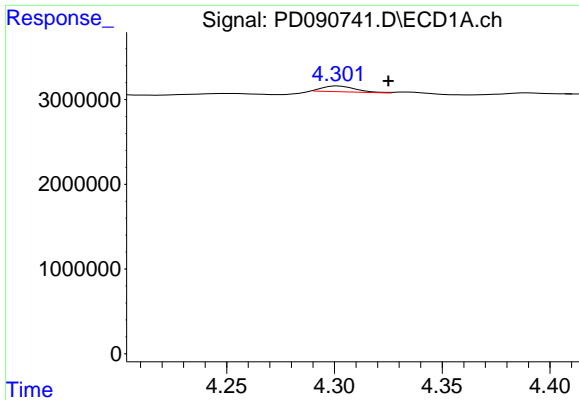
#1 Tetrachloro-m-xylene
 R.T.: 2.874 min
 Delta R.T.: 0.000 min
 Response: 520997690
 Conc: 17.50 ng/ml



#2 alpha-BHC
 R.T.: 0.000 min
 Exp R.T. : 3.994 min
 Response: 0
 Conc: N.D.



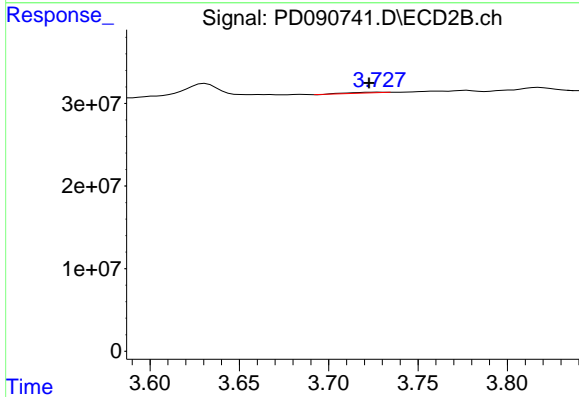
#2 alpha-BHC
 R.T.: 3.370 min
 Delta R.T.: -0.016 min
 Response: 2200232
 Conc: 0.04 ng/ml



#3 gamma-BHC (Lindane)

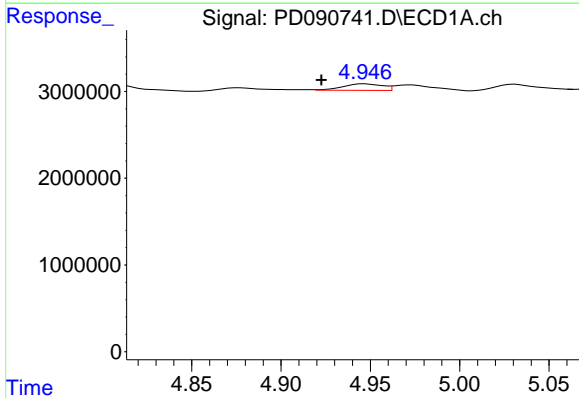
R.T.: 4.302 min
 Delta R.T.: -0.023 min
 Response: 712785
 Conc: 0.10 ng/ml

Instrument :
 ECD_D
 ClientSampleId :
 PR132-S12-020047-20251016



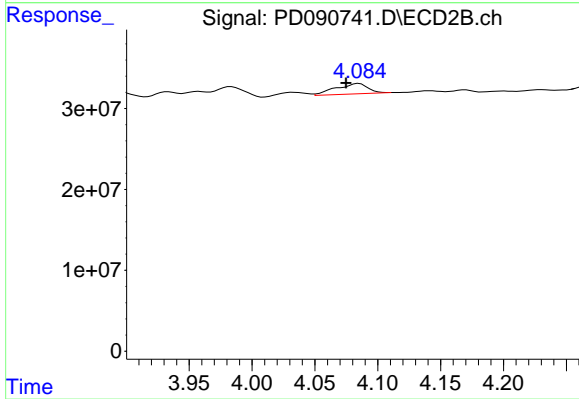
#3 gamma-BHC (Lindane)

R.T.: 3.729 min
 Delta R.T.: 0.006 min
 Response: 1235090
 Conc: 0.03 ng/ml



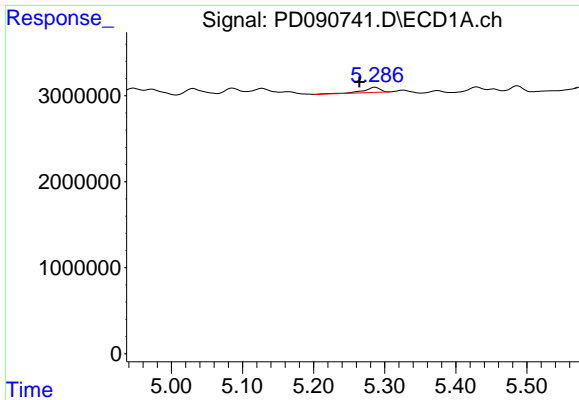
#4 Heptachlor

R.T.: 4.947 min
 Delta R.T.: 0.024 min
 Response: 1165180
 Conc: 0.21 ng/ml



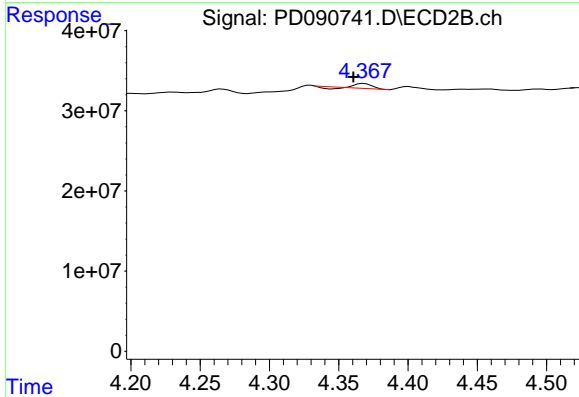
#4 Heptachlor

R.T.: 4.085 min
 Delta R.T.: 0.010 min
 Response: 22665531
 Conc: 0.51 ng/ml

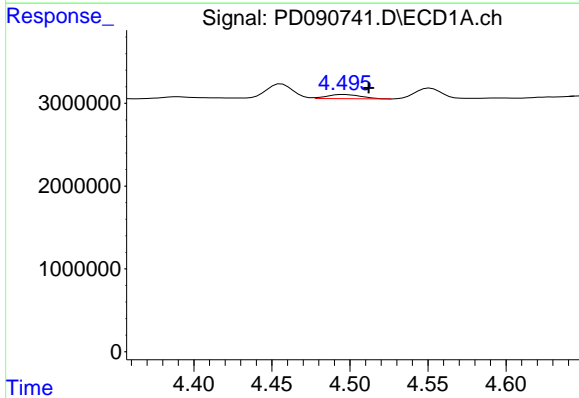


#5 Aldrin
 R.T.: 5.287 min
 Delta R.T.: 0.023 min
 Response: 925817
 Conc: 0.14 ng/ml

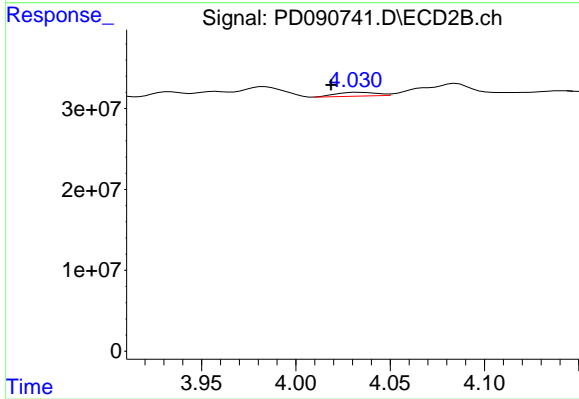
Instrument :
 ECD_D
 ClientSampleId :
 PR132-S12-020047-20251016



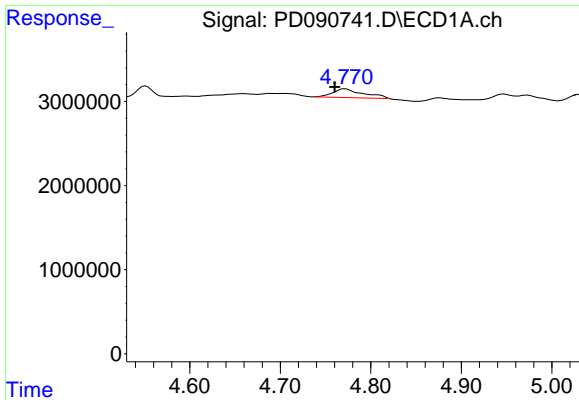
#5 Aldrin
 R.T.: 4.368 min
 Delta R.T.: 0.008 min
 Response: 3744137
 Conc: 0.08 ng/ml



#6 beta-BHC
 R.T.: 4.496 min
 Delta R.T.: -0.016 min
 Response: 729882
 Conc: 0.28 ng/ml



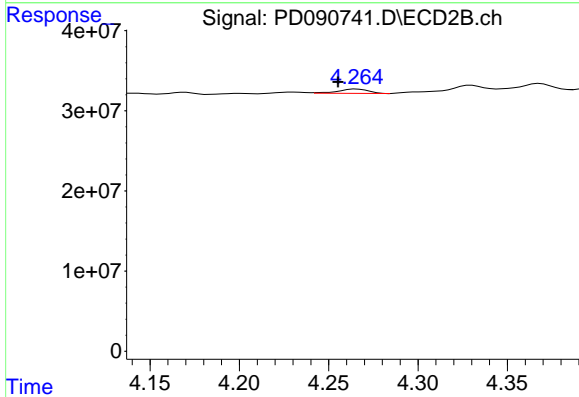
#6 beta-BHC
 R.T.: 4.033 min
 Delta R.T.: 0.014 min
 Response: 6948886
 Conc: 0.35 ng/ml



#7 delta-BHC

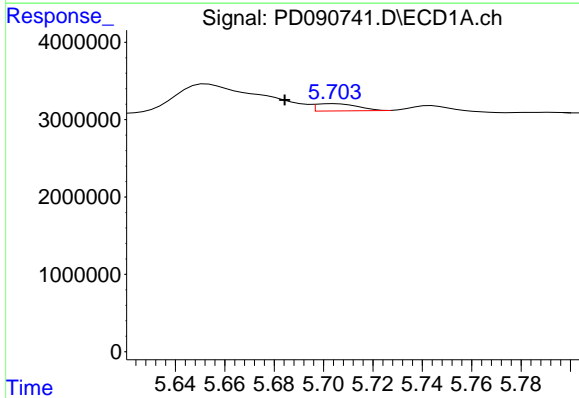
R.T.: 4.772 min
 Delta R.T.: 0.011 min
 Response: 2410000
 Conc: 0.36 ng/ml

Instrument : ECD_D
 ClientSampleId : PR132-S12-020047-20251016



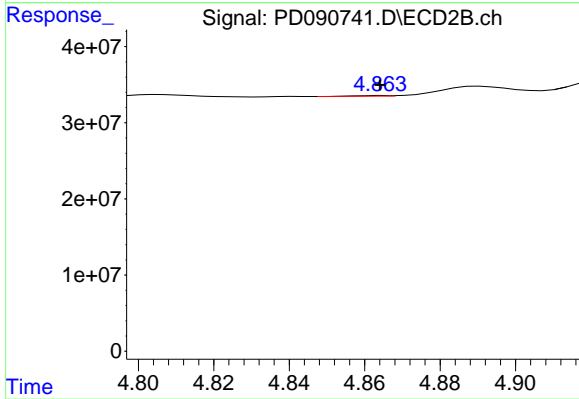
#7 delta-BHC

R.T.: 4.266 min
 Delta R.T.: 0.010 min
 Response: 6291658
 Conc: 0.13 ng/ml



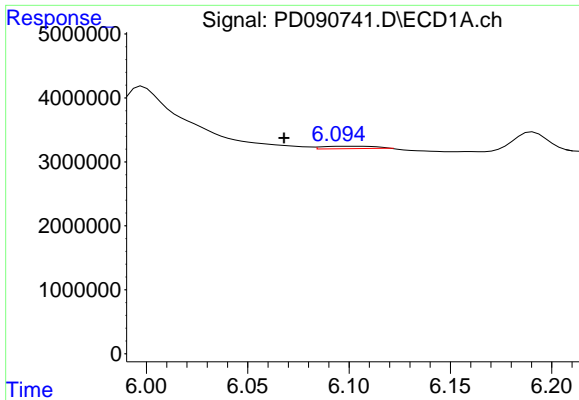
#8 Heptachlor epoxide

R.T.: 5.705 min
 Delta R.T.: 0.020 min
 Response: 1096729
 Conc: 0.19 ng/ml



#8 Heptachlor epoxide

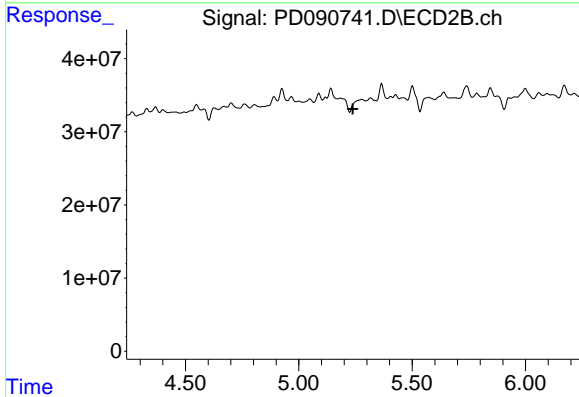
R.T.: 4.865 min
 Delta R.T.: 0.000 min
 Response: 536709
 Conc: 0.01 ng/ml



#9 Endosulfan I

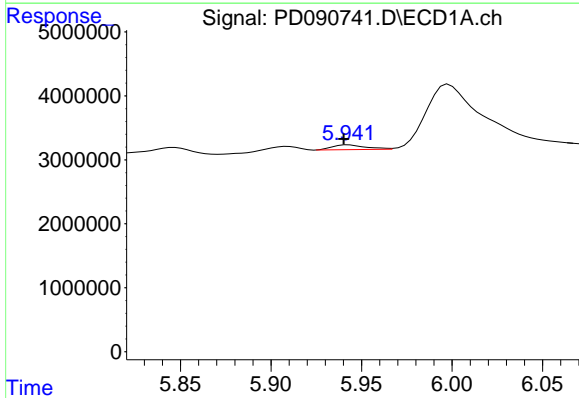
R.T.: 6.097 min
 Delta R.T.: 0.029 min
 Response: 728382
 Conc: 0.13 ng/ml

Instrument : ECD_D
 ClientSampleId : PR132-S12-020047-20251016



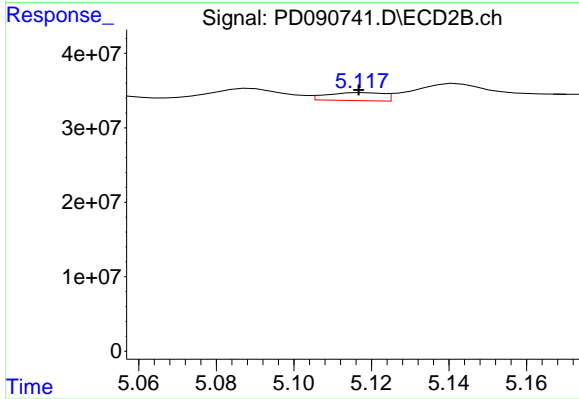
#9 Endosulfan I

R.T.: 0.000 min
 Exp R.T. : 5.238 min
 Response: 0
 Conc: N.D.



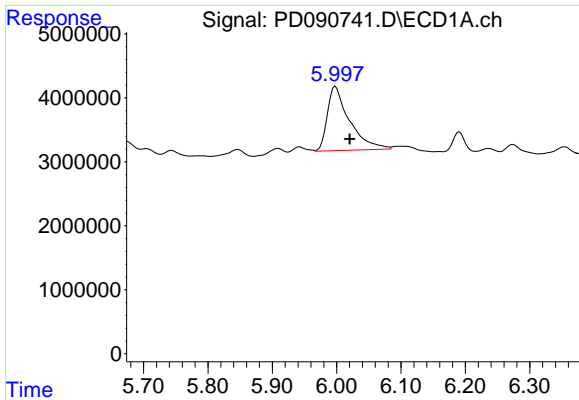
#10 gamma-Chlordane

R.T.: 5.943 min
 Delta R.T.: 0.003 min
 Response: 993761
 Conc: 0.17 ng/ml



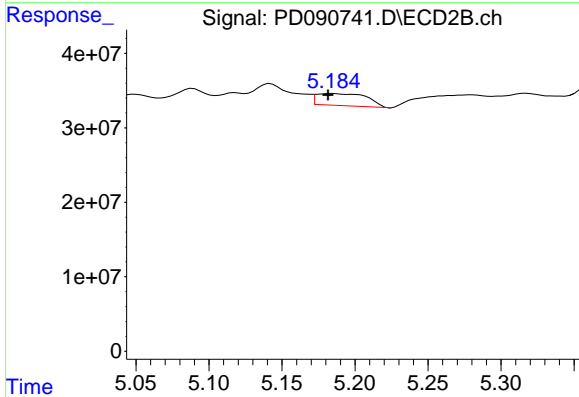
#10 gamma-Chlordane

R.T.: 5.118 min
 Delta R.T.: 0.001 min
 Response: 10834329
 Conc: 0.24 ng/ml

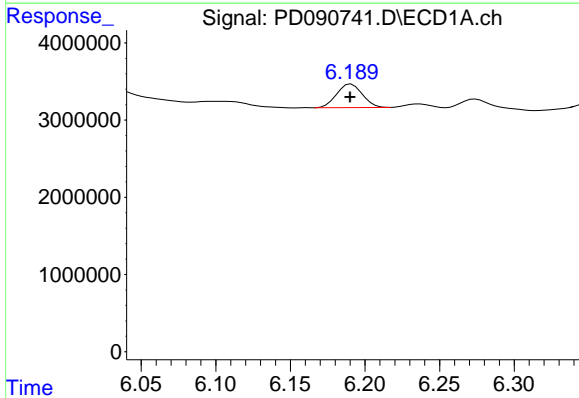


#11 alpha-Chlordane
 R.T.: 5.998 min
 Delta R.T.: -0.022 min
 Response: 23992814
 Conc: 3.88 ng/ml

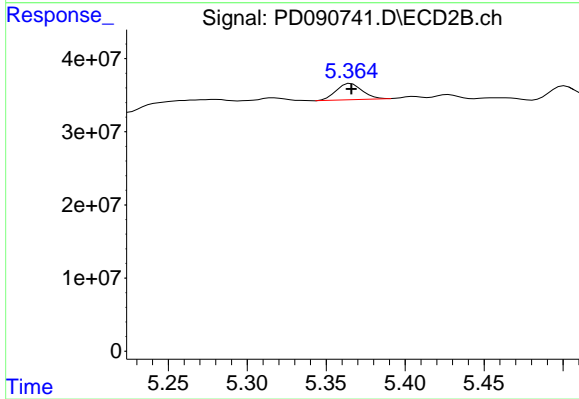
Instrument :
 ECD_D
 ClientSampleId :
 PR132-S12-020047-20251016



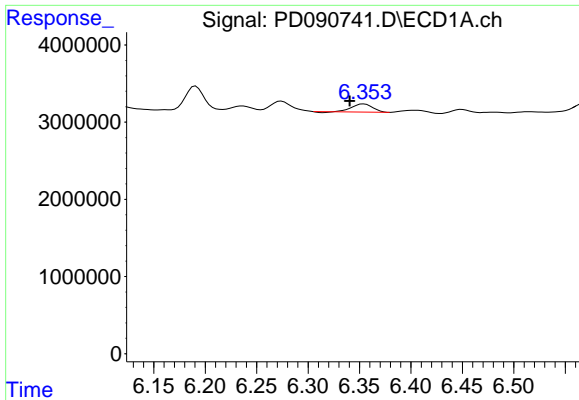
#11 alpha-Chlordane
 R.T.: 5.184 min
 Delta R.T.: 0.003 min
 Response: 39065454
 Conc: 0.91 ng/ml



#12 4,4'-DDE
 R.T.: 6.191 min
 Delta R.T.: 0.000 min
 Response: 3673773
 Conc: 0.69 ng/ml



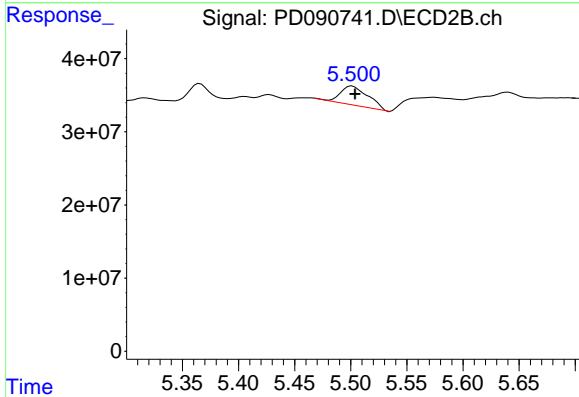
#12 4,4'-DDE
 R.T.: 5.366 min
 Delta R.T.: 0.000 min
 Response: 25468821
 Conc: 0.58 ng/ml



#13 Dieldrin

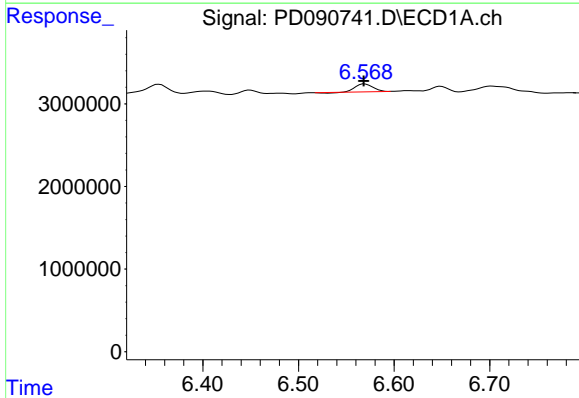
R.T.: 6.354 min
 Delta R.T.: 0.014 min
 Response: 1414775
 Conc: 0.24 ng/ml

Instrument : ECD_D
 ClientSampleId : PR132-S12-020047-20251016



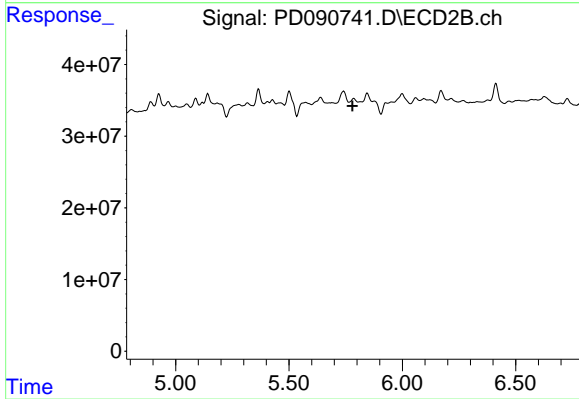
#13 Dieldrin

R.T.: 5.501 min
 Delta R.T.: -0.003 min
 Response: 45556598
 Conc: 1.03 ng/ml



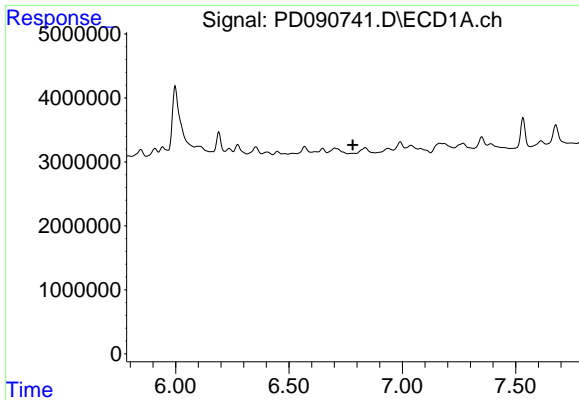
#14 Endrin

R.T.: 6.569 min
 Delta R.T.: 0.001 min
 Response: 1168402
 Conc: 0.24 ng/ml



#14 Endrin

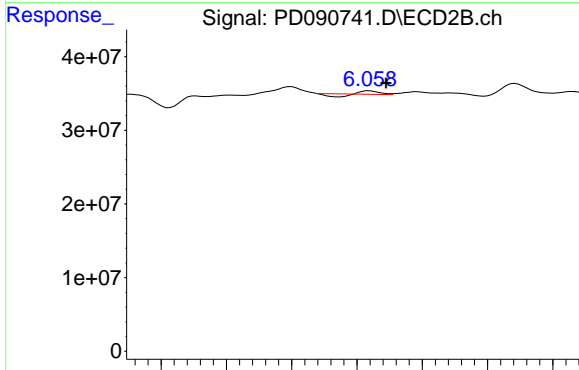
R.T.: 5.786 min
 Delta R.T.: 0.005 min
 Response: -2169691
 Conc: N.D.



#15 Endosulfan II

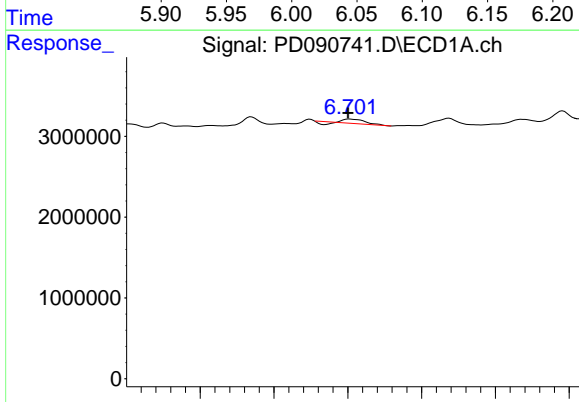
R.T.: 0.000 min
 Exp R.T.: 6.781 min
 Response: 0
 Conc: N.D.

Instrument :
 ECD_D
 ClientSampleId :
 PR132-S12-020047-20251016



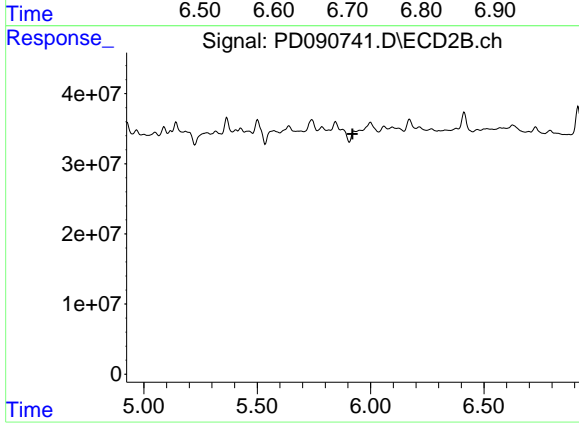
#15 Endosulfan II

R.T.: 6.059 min
 Delta R.T.: -0.013 min
 Response: 1369422
 Conc: 0.04 ng/ml



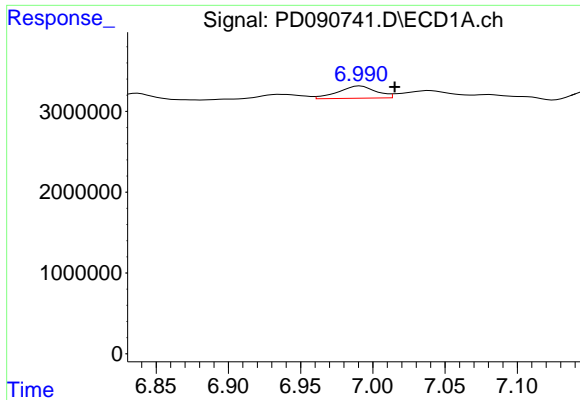
#16 4,4'-DDD

R.T.: 6.702 min
 Delta R.T.: 0.002 min
 Response: 827175
 Conc: 0.20 ng/ml



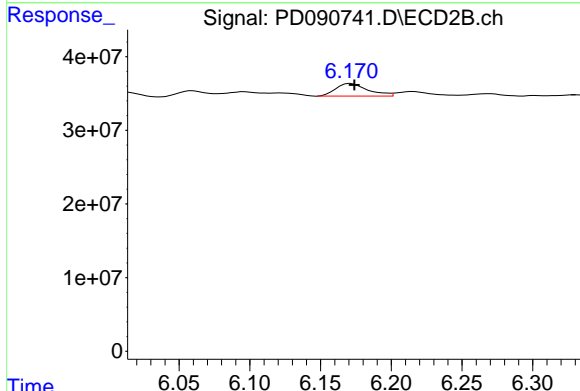
#16 4,4'-DDD

R.T.: 5.927 min
 Delta R.T.: 0.006 min
 Response: -13706214
 Conc: N.D.

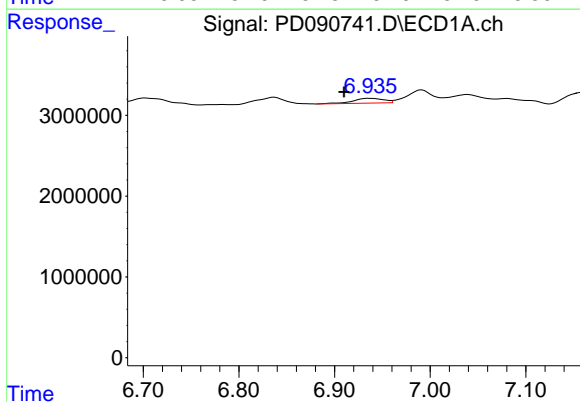


#17 4,4'-DDT
 R.T.: 6.991 min
 Delta R.T.: -0.024 min
 Response: 2753137
 Conc: 0.67 ng/ml

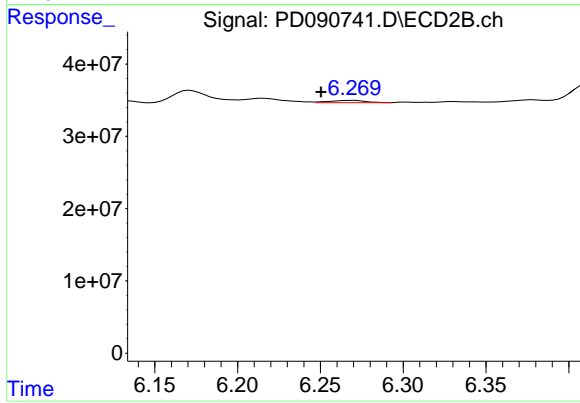
Instrument : ECD_D
 ClientSampleId : PR132-S12-020047-20251016



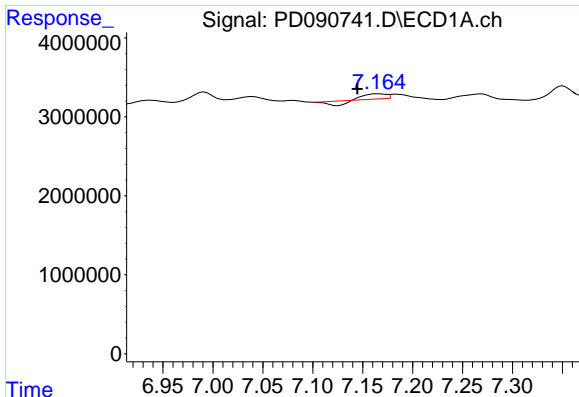
#17 4,4'-DDT
 R.T.: 6.171 min
 Delta R.T.: -0.003 min
 Response: 27009276
 Conc: 0.77 ng/ml



#18 Endrin aldehyde
 R.T.: 6.937 min
 Delta R.T.: 0.027 min
 Response: 1300471
 Conc: 0.36 ng/ml



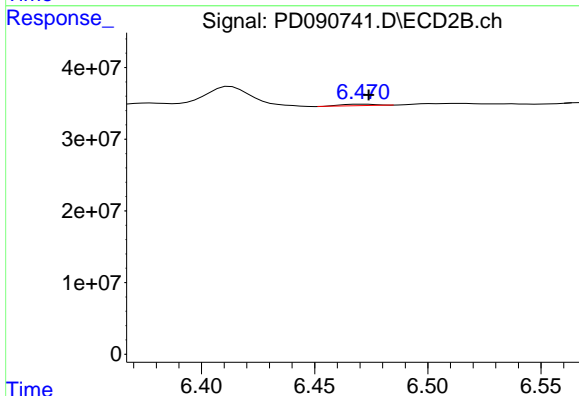
#18 Endrin aldehyde
 R.T.: 6.270 min
 Delta R.T.: 0.019 min
 Response: 4837912
 Conc: 0.17 ng/ml



#19 Endosulfan Sulfate

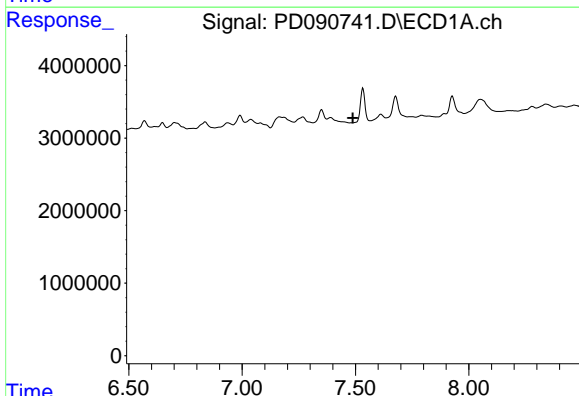
R.T.: 7.165 min
 Delta R.T.: 0.020 min
 Response: 405393
 Conc: 0.09 ng/ml

Instrument :
 ECD_D
 ClientSampleId :
 PR132-S12-020047-20251016



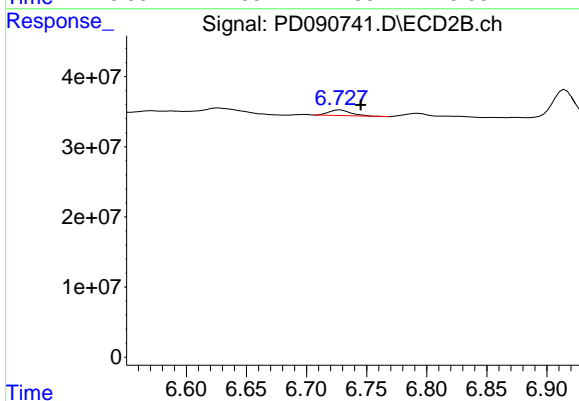
#19 Endosulfan Sulfate

R.T.: 6.472 min
 Delta R.T.: -0.002 min
 Response: 2099238
 Conc: 0.06 ng/ml



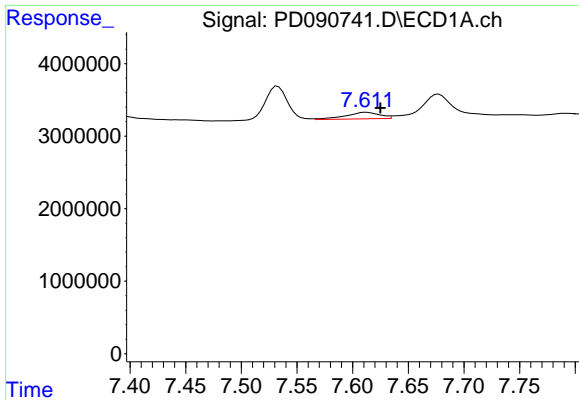
#20 Methoxychlor

R.T.: 0.000 min
 Exp R.T. : 7.488 min
 Response: 0
 Conc: N.D.



#20 Methoxychlor

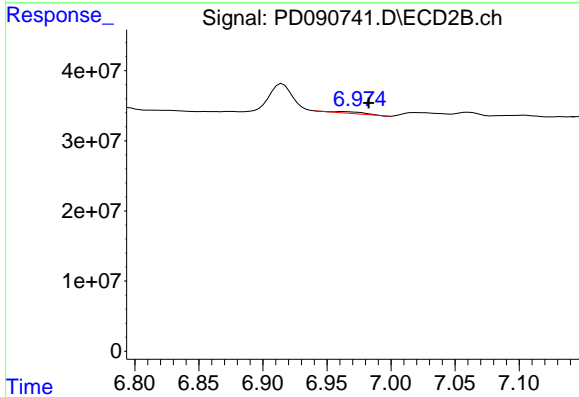
R.T.: 6.728 min
 Delta R.T.: -0.017 min
 Response: 10300842
 Conc: 0.59 ng/ml



#21 Endrin ketone

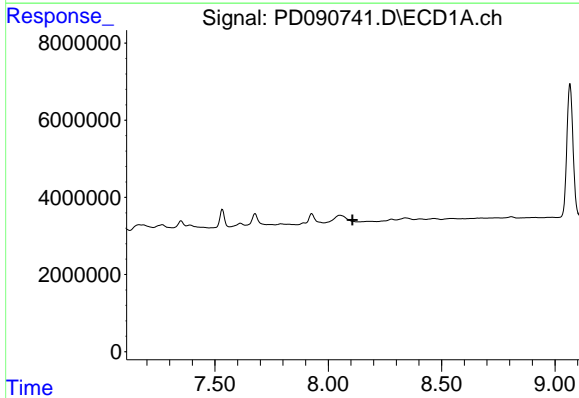
R.T.: 7.612 min
 Delta R.T.: -0.012 min
 Response: 1923332
 Conc: 0.40 ng/ml

Instrument :
 ECD_D
 ClientSampleId :
 PR132-S12-020047-20251016



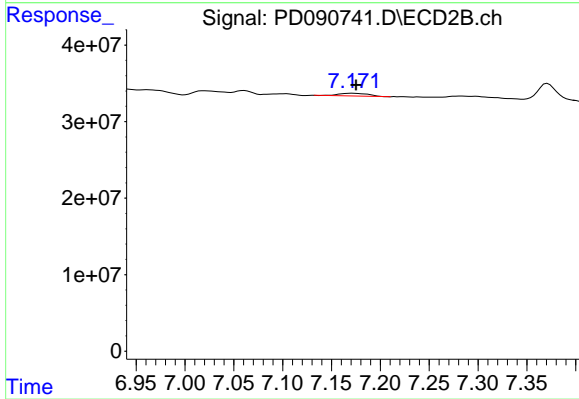
#21 Endrin ketone

R.T.: 6.962 min
 Delta R.T.: -0.021 min
 Response: 4146991
 Conc: 0.11 ng/ml



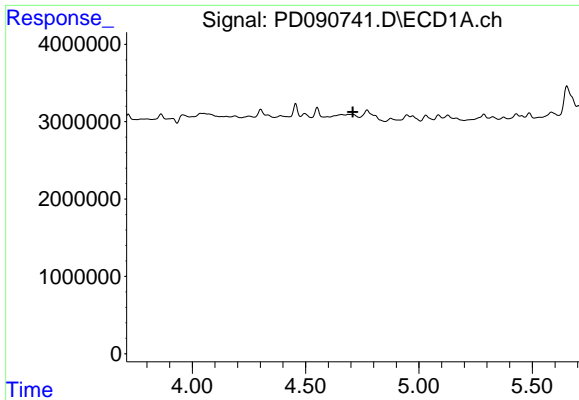
#22 Mirex

R.T.: 0.000 min
 Exp R.T. : 8.107 min
 Response: 0
 Conc: N.D.



#22 Mirex

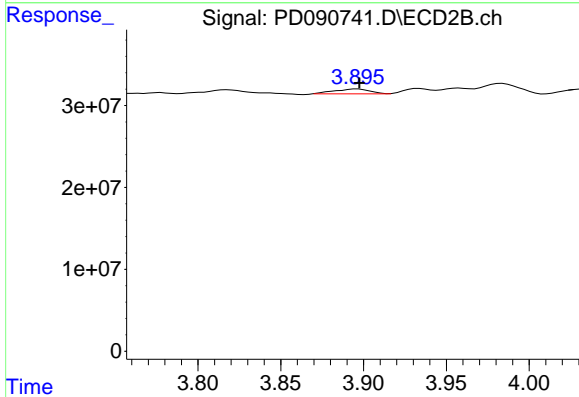
R.T.: 7.172 min
 Delta R.T.: -0.003 min
 Response: 7619328
 Conc: 0.30 ng/ml



#23 Chlordane-1

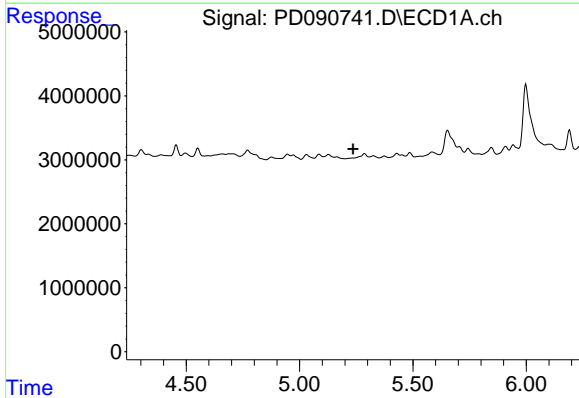
R.T.: 0.000 min
 Exp R.T.: 4.709 min
 Response: 0
 Conc: N.D.

Instrument :
 ECD_D
 ClientSampleId :
 PR132-S12-020047-20251016



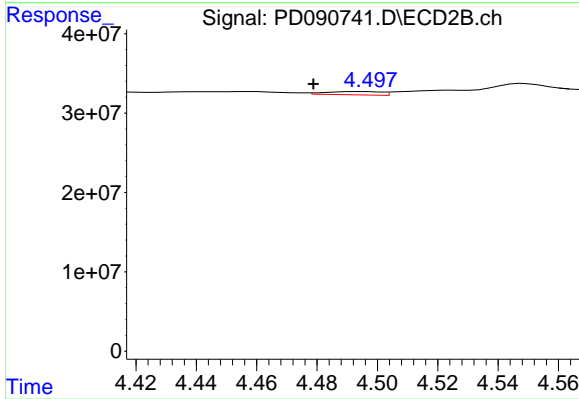
#23 Chlordane-1

R.T.: 3.896 min
 Delta R.T.: -0.001 min
 Response: 8948583
 Conc: 7.18 ng/ml



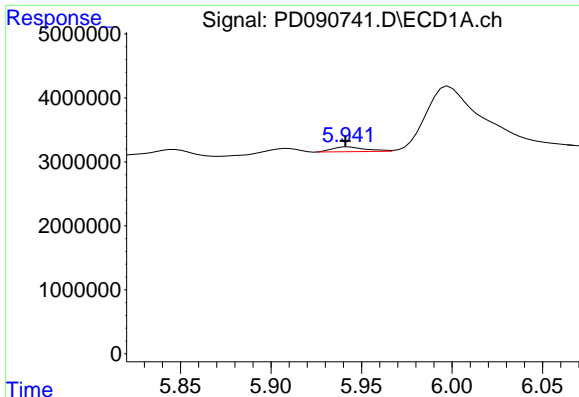
#24 Chlordane-2

R.T.: 0.000 min
 Exp R.T.: 5.236 min
 Response: 0
 Conc: N.D.



#24 Chlordane-2

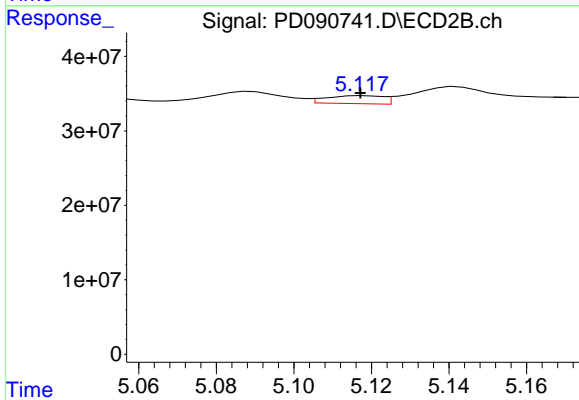
R.T.: 4.495 min
 Delta R.T.: 0.016 min
 Response: 5414156
 Conc: 4.15 ng/ml



#25 Chlordane-3

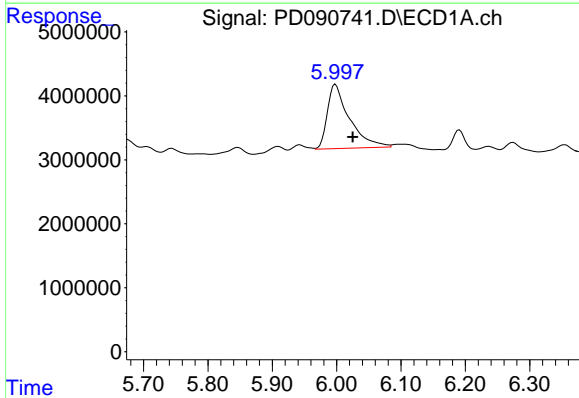
R.T.: 5.943 min
 Delta R.T.: 0.002 min
 Response: 993761
 Conc: 1.30 ng/ml

Instrument :
 ECD_D
 ClientSampleId :
 PR132-S12-020047-20251016



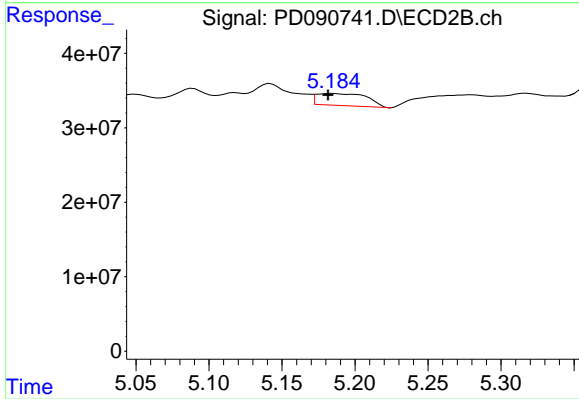
#25 Chlordane-3

R.T.: 5.118 min
 Delta R.T.: 0.000 min
 Response: 10834329
 Conc: 2.78 ng/ml



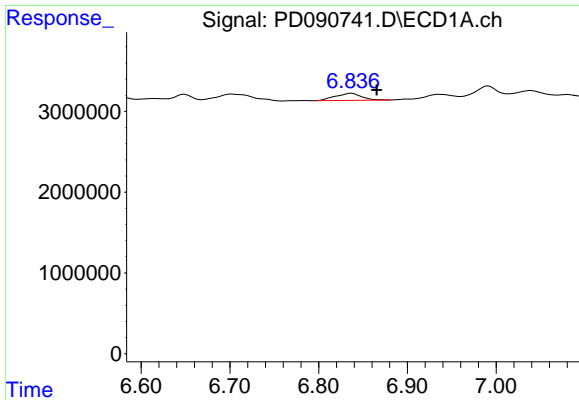
#26 Chlordane-4

R.T.: 5.998 min
 Delta R.T.: -0.027 min
 Response: 23992814
 Conc: 24.76 ng/ml



#26 Chlordane-4

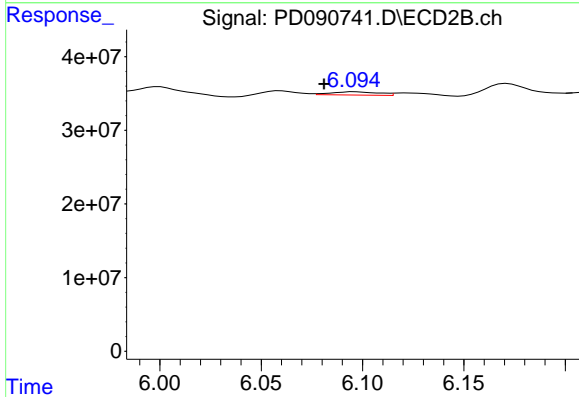
R.T.: 5.184 min
 Delta R.T.: 0.002 min
 Response: 39065454
 Conc: 11.69 ng/ml



#27 Chlordane-5

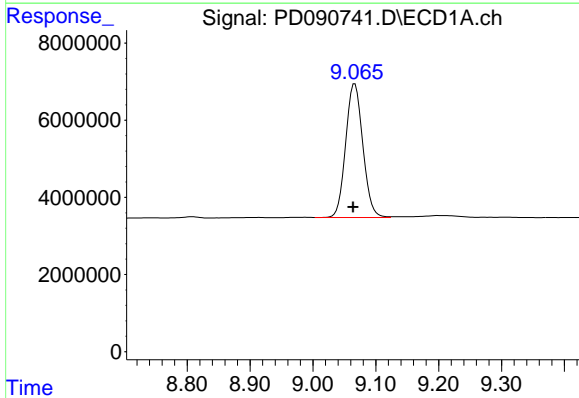
R.T.: 6.837 min
 Delta R.T.: -0.029 min
 Response: 1800963
 Conc: 11.99 ng/ml

Instrument : ECD_D
 ClientSampleId : PR132-S12-020047-20251016



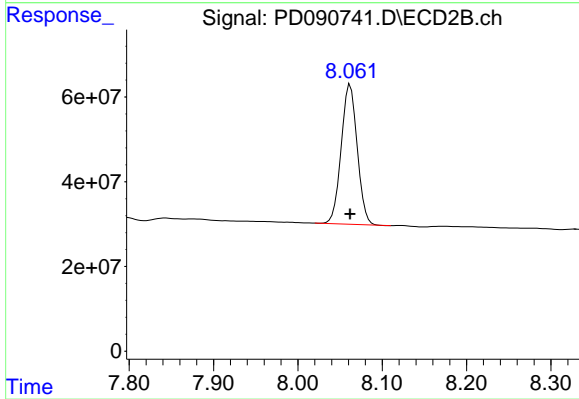
#27 Chlordane-5

R.T.: 6.096 min
 Delta R.T.: 0.015 min
 Response: 7309611
 Conc: 4.95 ng/ml



#28 Decachlorobiphenyl

R.T.: 9.067 min
 Delta R.T.: 0.002 min
 Response: 65685073
 Conc: 14.04 ng/ml



#28 Decachlorobiphenyl

R.T.: 8.062 min
 Delta R.T.: 0.000 min
 Response: 435893540
 Conc: 14.39 ng/ml