

Data Path : Z:\pestpcbsrv\HPCHEM1\ECD\_D\Data\PD102125\  
 Data File : PD090742.D  
 Signal(s) : Signal #1: ECD1A.ch Signal #2: ECD2B.ch  
 Acq On : 21 Oct 2025 18:43  
 Operator : AR\AJ  
 Sample : Q3393-01  
 Misc :  
 ALS Vial : 20 Sample Multiplier: 1

Instrument :  
 ECD\_D  
 ClientSampleId :  
 PR132-S10-000022-20251017

Integration File signal 1: autoint1.e  
 Integration File signal 2: autoint2.e  
 Quant Time: Oct 23 13:12:12 2025  
 Quant Method : Z:\pestpcbsrv\HPCHEM1\ECD\_D\Method\PD101725.M  
 Quant Title : GC Extractables  
 QLast Update : Fri Oct 17 17:43:28 2025  
 Response via : Initial Calibration  
 Integrator: ChemStation

Volume Inj. : 1 µl  
 Signal #1 Phase : ZB-MR2 Signal #2 Phase: ZB-MR2  
 Signal #1 Info : 30M x 0.32mm x0.5 Signal #2 Info : 30M x 0.32mm x 0.25µm

Compound	RT#1	RT#2	Resp#1	Resp#2	ng/ml	ng/ml
System Monitoring Compounds						
1) SA Tetrachlo...	3.544	2.874	61373534	506.1E6	19.708	16.995
28) SA Decachlor...	9.067	8.062	63345238	397.4E6	13.541	13.118
Target Compounds						
2) A alpha-BHC	4.014f	3.369f	-566631	9714409	N.D.	0.190
3) MA gamma-BHC...	4.335	0.000	2242436	0	0.330	N.D. #
4) MA Heptachlor	0.000	4.068	0	89458753	N.D.	2.006 #
5) MB Aldrin	5.287f	4.365	4673832	27712407	0.714	0.598
6) B beta-BHC	0.000	4.023	0	50681543	N.D.	2.556 #
7) B delta-BHC	4.792f	4.267	1740092	63036921	0.257	1.321 #
8) B Heptachlo...	5.675	4.859	6236667	26231085	1.077	0.615 #
9) A Endosulfan I	6.095f	5.262f	2681935	72396154	0.484	1.838 #
10) B gamma-Chl...	5.909f	5.116	784565	54279566	0.132	1.208 #
11) B alpha-Chl...	5.998f	5.187	29725057	230.9E6	4.810	5.352
12) B 4,4'-DDE	6.191	5.365	15091335	81563180	2.833	1.861 #
13) MA Dieldrin	6.342	5.502	939252	188.6E6	0.161	4.269 #
14) MA Endrin	6.568	5.783	2826081	-16684140	0.570	N.D. #
17) MA 4,4'-DDT	7.029	6.170	1881270	50253155	0.458	1.433 #
18) B Endrin al...	6.934f	6.270f	1855364	10673057	0.507	0.385
19) B Endosulfa...	7.162f	6.472	-497895	7353976	N.D.	0.205
20) A Methoxychlor	0.000	6.727f	0	21718253	N.D.	1.246 #
21) B Endrin ke...	7.612	6.957f	3125701	23253643	0.643	0.617
22) Mirex	8.133f	7.179	-740741	6497324	N.D.	0.253
23) Chlordane-1	4.711	3.893	928943	152.6E6	4.916	122.424 #
24) Chlordane-2	5.216	4.448f	1723661	16572999	8.925	12.704 #
25) Chlordane-3	0.000	5.116	0	54279566	N.D.	13.948 #
26) Chlordane-4	5.998f	5.187	29725057	230.9E6	30.680	69.101 #

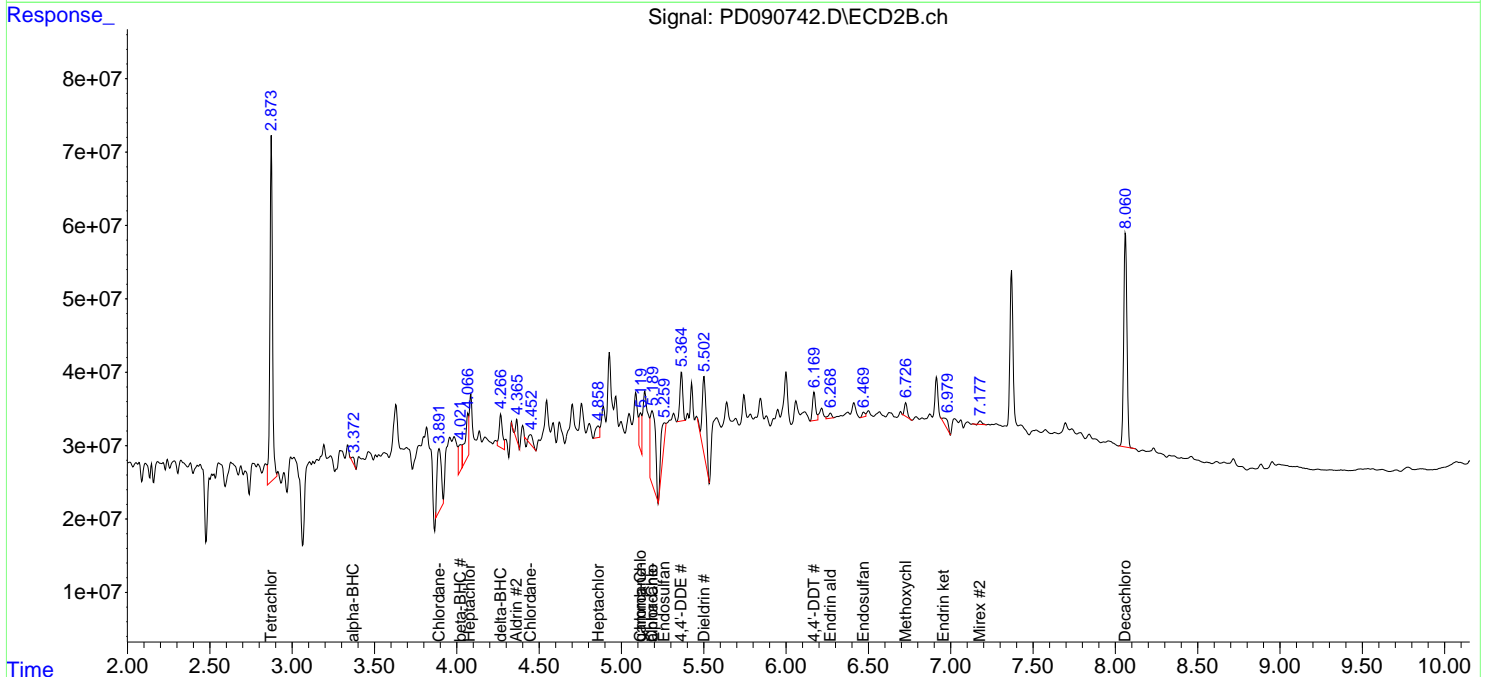
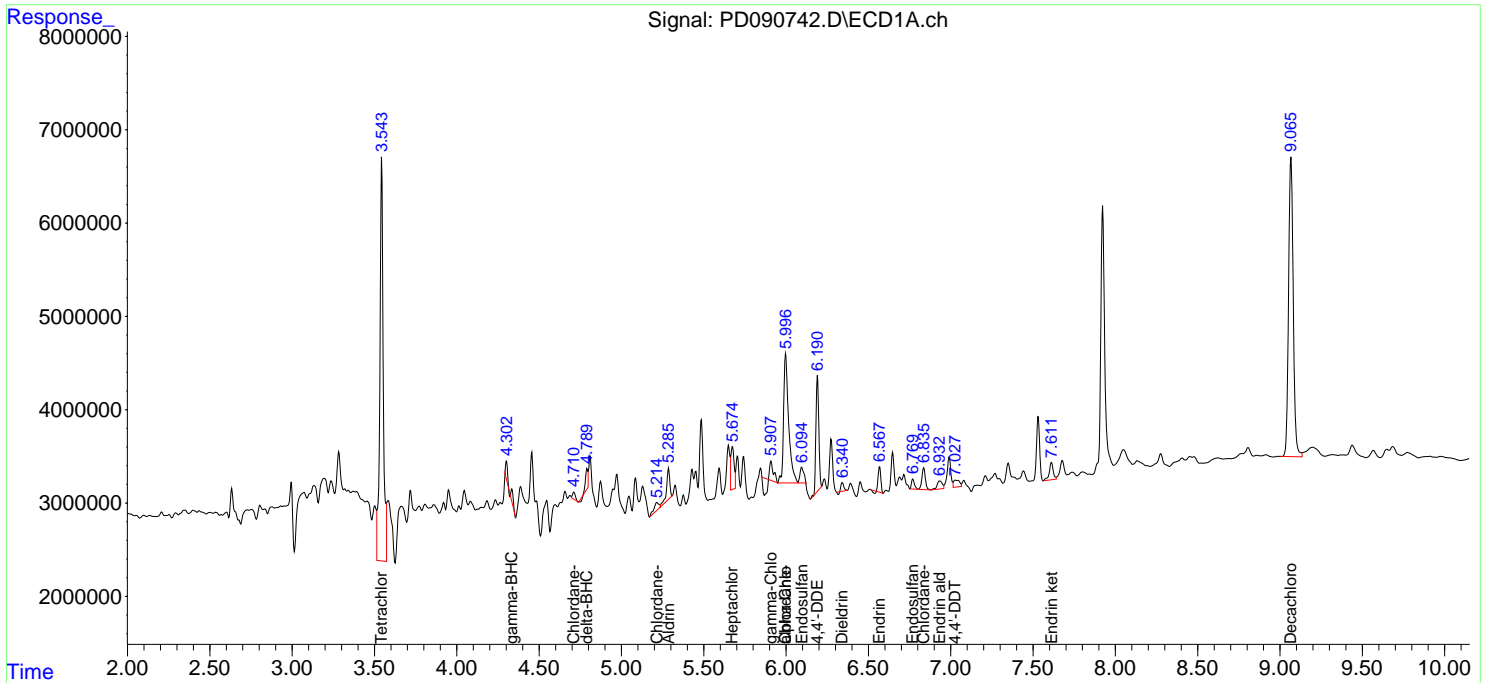
(f)=RT Delta > 1/2 Window (#)=Amounts differ by > 25% (m)=manual int.

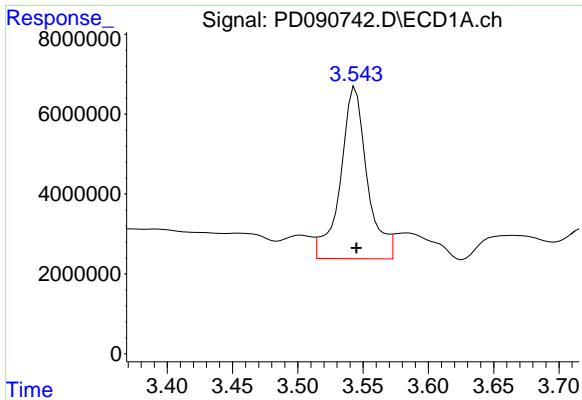
Data Path : Z:\pestpcbsrv\HPCHEM1\ECD\_D\Data\PD102125\  
 Data File : PD090742.D  
 Signal(s) : Signal #1: ECD1A.ch Signal #2: ECD2B.ch  
 Acq On : 21 Oct 2025 18:43  
 Operator : AR\AJ  
 Sample : Q3393-01  
 Misc :  
 ALS Vial : 20 Sample Multiplier: 1

Instrument :  
 ECD\_D  
 ClientSampleId :  
 PR132-S10-000022-20251017

Integration File signal 1: autoint1.e  
 Integration File signal 2: autoint2.e  
 Quant Time: Oct 23 13:12:12 2025  
 Quant Method : Z:\pestpcbsrv\HPCHEM1\ECD\_D\Method\PD101725.M  
 Quant Title : GC Extractables  
 QLast Update : Fri Oct 17 17:43:28 2025  
 Response via : Initial Calibration  
 Integrator: ChemStation

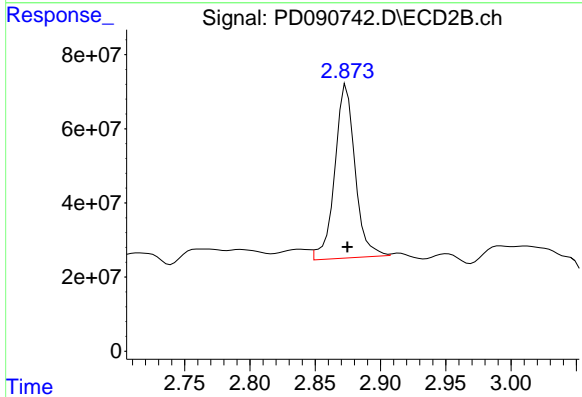
Volume Inj. : 1 µl  
 Signal #1 Phase : ZB-MR1 Signal #2 Phase: ZB-MR2  
 Signal #1 Info : 30M x 0.32mm x0.5 Signal #2 Info : 30M x 0.32mm x 0.25µm



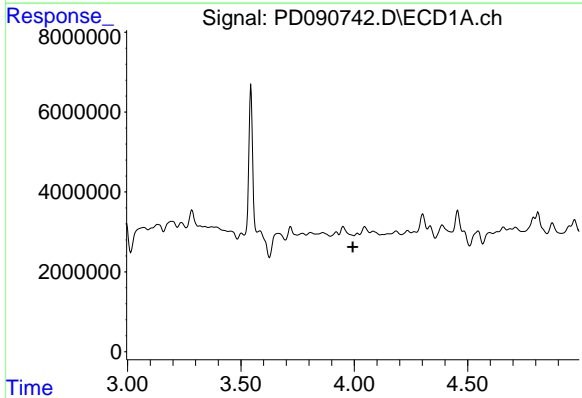


#1 Tetrachloro-m-xylene  
 R.T.: 3.544 min  
 Delta R.T.: 0.000 min  
 Response: 61373534  
 Conc: 19.71 ng/ml

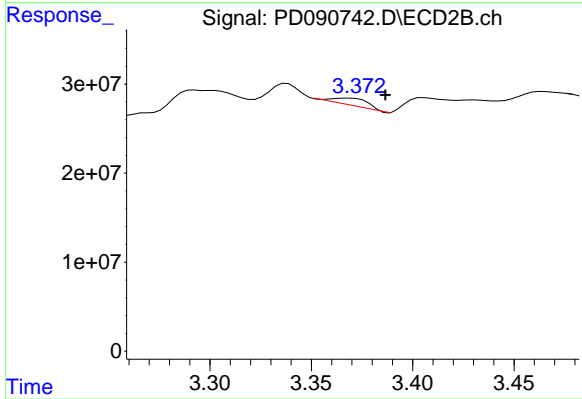
Instrument :  
 ECD\_D  
 ClientSampleId :  
 PR132-S10-000022-20251017



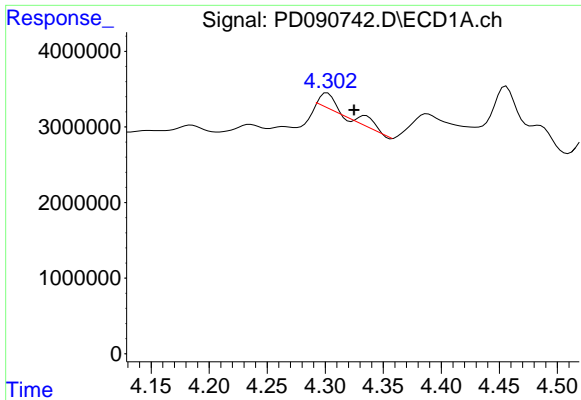
#1 Tetrachloro-m-xylene  
 R.T.: 2.874 min  
 Delta R.T.: 0.000 min  
 Response: 506069497  
 Conc: 17.00 ng/ml



#2 alpha-BHC  
 R.T.: 4.014 min  
 Delta R.T.: 0.020 min  
 Response: -566631  
 Conc: N.D.



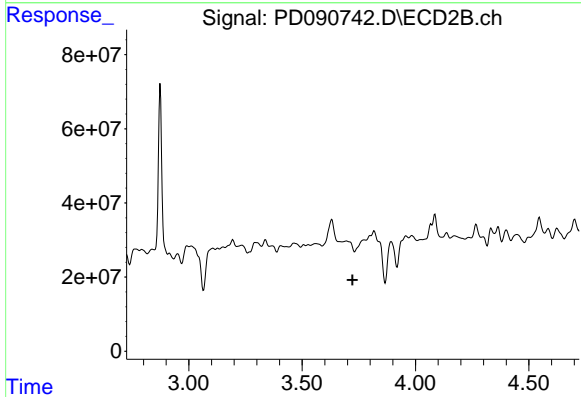
#2 alpha-BHC  
 R.T.: 3.369 min  
 Delta R.T.: -0.018 min  
 Response: 9714409  
 Conc: 0.19 ng/ml



#3 gamma-BHC (Lindane)

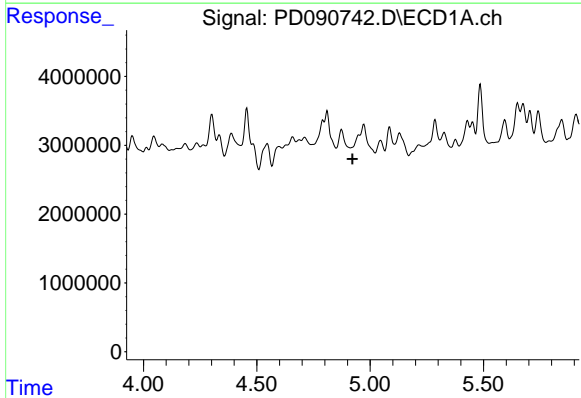
R.T.: 4.335 min  
 Delta R.T.: 0.010 min  
 Response: 2242436  
 Conc: 0.33 ng/ml

Instrument :  
 ECD\_D  
 ClientSampleId :  
 PR132-S10-000022-20251017



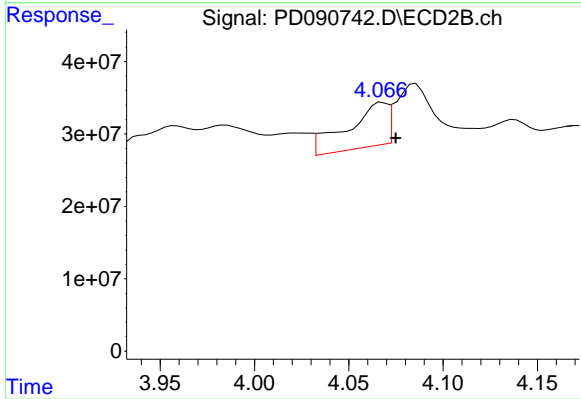
#3 gamma-BHC (Lindane)

R.T.: 0.000 min  
 Exp R.T. : 3.723 min  
 Response: 0  
 Conc: N.D.



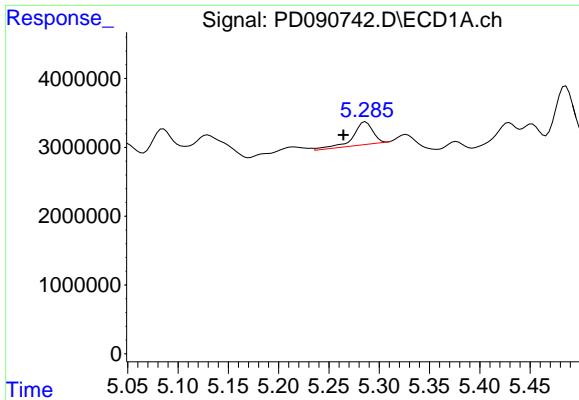
#4 Heptachlor

R.T.: 0.000 min  
 Exp R.T. : 4.923 min  
 Response: 0  
 Conc: N.D.



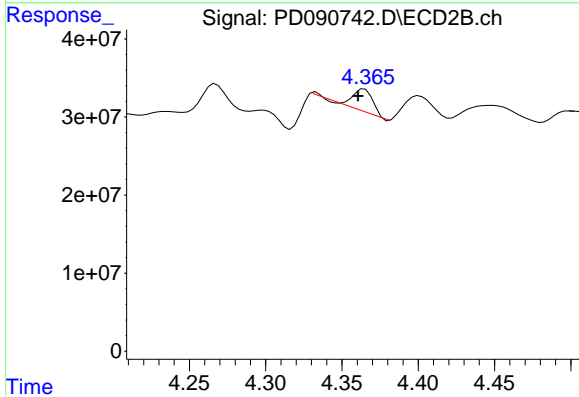
#4 Heptachlor

R.T.: 4.068 min  
 Delta R.T.: -0.007 min  
 Response: 89458753  
 Conc: 2.01 ng/ml

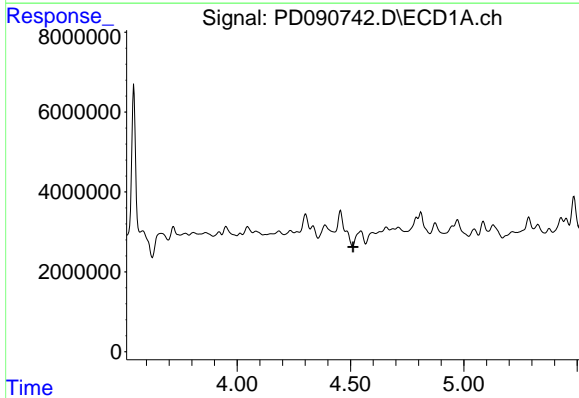


#5 Aldrin  
 R.T.: 5.287 min  
 Delta R.T.: 0.022 min  
 Response: 4673832  
 Conc: 0.71 ng/ml

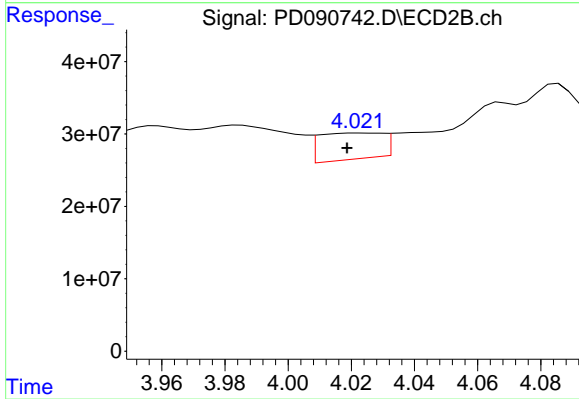
Instrument :  
 ECD\_D  
 ClientSampleId :  
 PR132-S10-000022-20251017



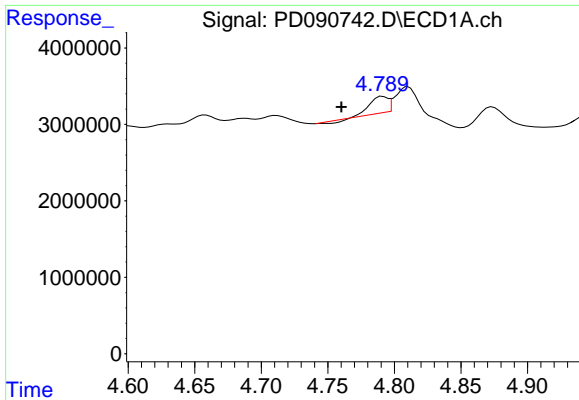
#5 Aldrin  
 R.T.: 4.365 min  
 Delta R.T.: 0.004 min  
 Response: 27712407  
 Conc: 0.60 ng/ml



#6 beta-BHC  
 R.T.: 0.000 min  
 Exp R.T. : 4.512 min  
 Response: 0  
 Conc: N.D.



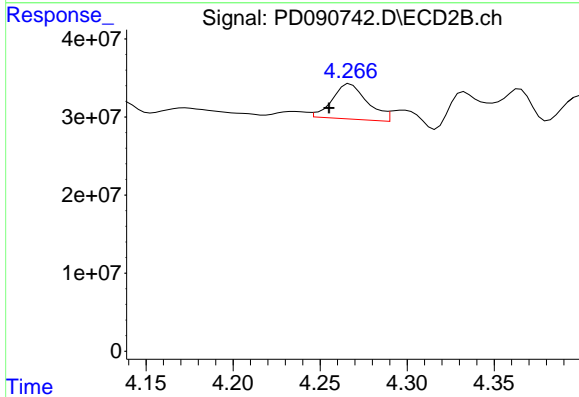
#6 beta-BHC  
 R.T.: 4.023 min  
 Delta R.T.: 0.004 min  
 Response: 50681543  
 Conc: 2.56 ng/ml



#7 delta-BHC

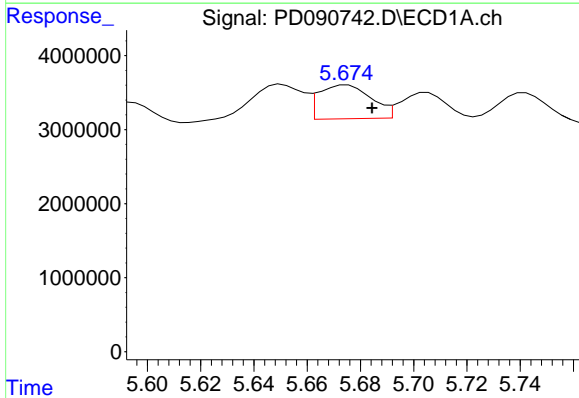
R.T.: 4.792 min  
 Delta R.T.: 0.031 min  
 Response: 1740092  
 Conc: 0.26 ng/ml

Instrument : ECD\_D  
 ClientSampleId : PR132-S10-000022-20251017



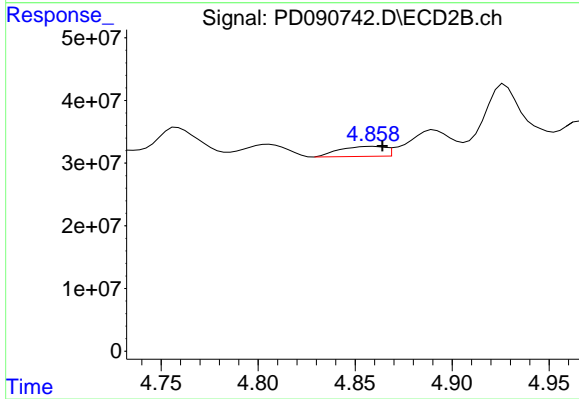
#7 delta-BHC

R.T.: 4.267 min  
 Delta R.T.: 0.012 min  
 Response: 63036921  
 Conc: 1.32 ng/ml



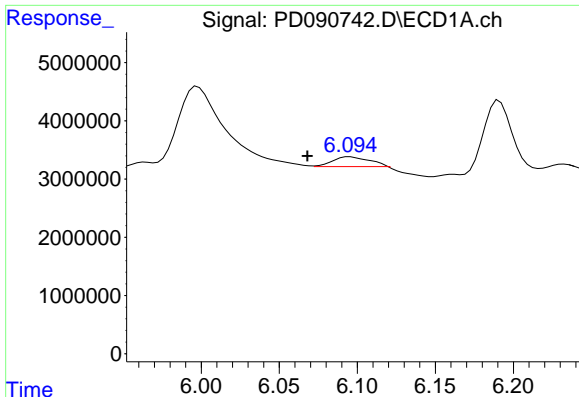
#8 Heptachlor epoxide

R.T.: 5.675 min  
 Delta R.T.: -0.009 min  
 Response: 6236667  
 Conc: 1.08 ng/ml



#8 Heptachlor epoxide

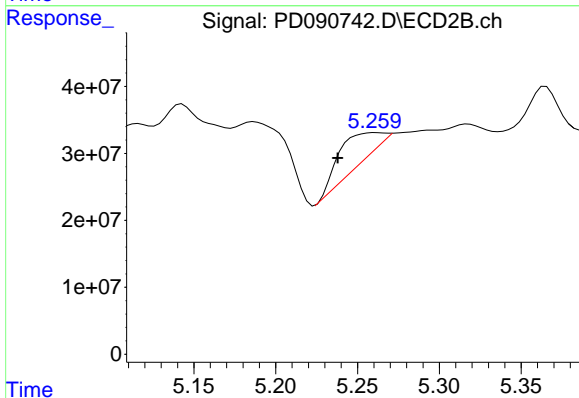
R.T.: 4.859 min  
 Delta R.T.: -0.005 min  
 Response: 26231085  
 Conc: 0.62 ng/ml



#9 Endosulfan I

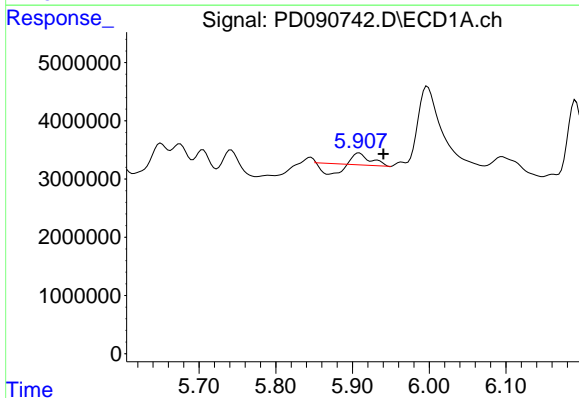
R.T.: 6.095 min  
 Delta R.T.: 0.027 min  
 Response: 2681935  
 Conc: 0.48 ng/ml

Instrument :  
 ECD\_D  
 ClientSampleId :  
 PR132-S10-000022-20251017



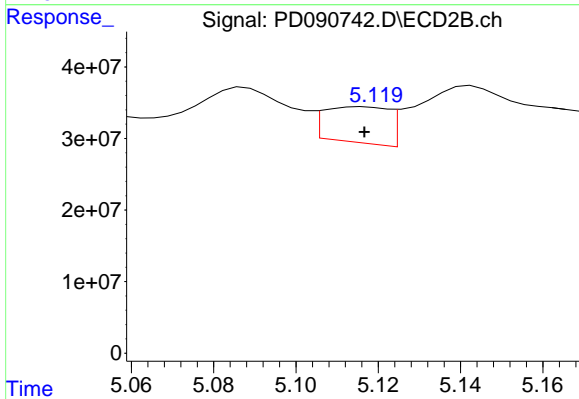
#9 Endosulfan I

R.T.: 5.262 min  
 Delta R.T.: 0.024 min  
 Response: 72396154  
 Conc: 1.84 ng/ml



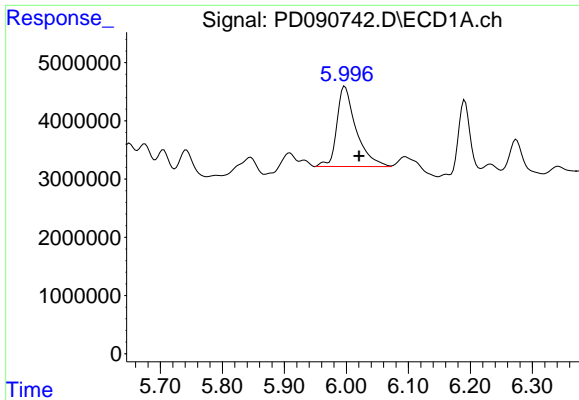
#10 gamma-Chlordane

R.T.: 5.909 min  
 Delta R.T.: -0.031 min  
 Response: 784565  
 Conc: 0.13 ng/ml



#10 gamma-Chlordane

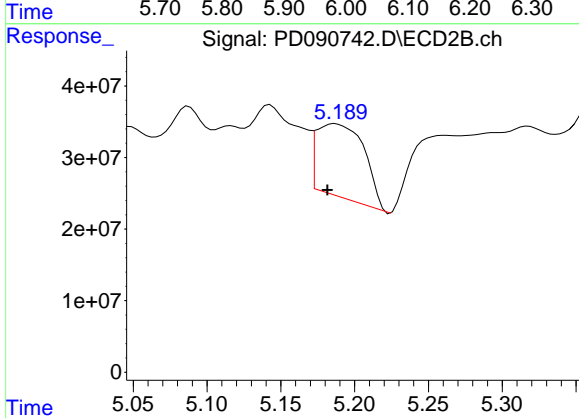
R.T.: 5.116 min  
 Delta R.T.: 0.000 min  
 Response: 54279566  
 Conc: 1.21 ng/ml



#11 alpha-Chlordane

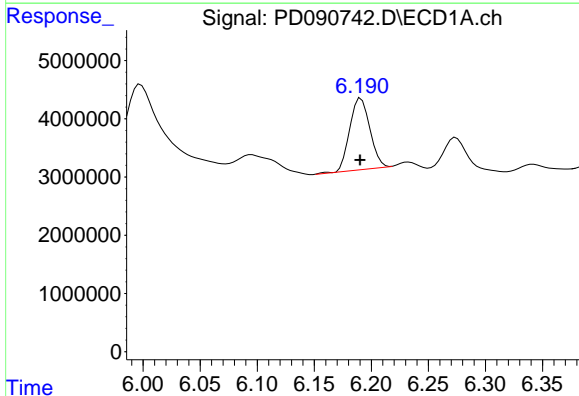
R.T.: 5.998 min  
 Delta R.T.: -0.023 min  
 Response: 29725057  
 Conc: 4.81 ng/ml

Instrument :  
 ECD\_D  
 ClientSampleId :  
 PR132-S10-000022-20251017



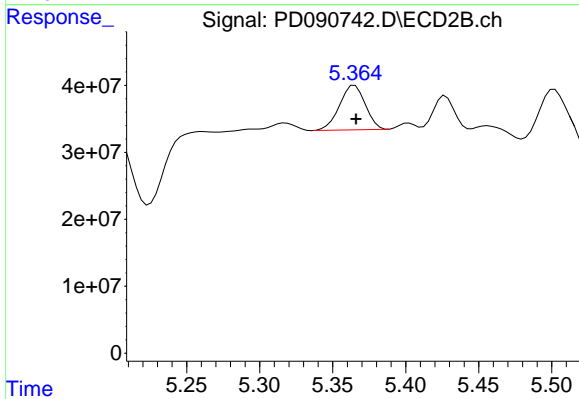
#11 alpha-Chlordane

R.T.: 5.187 min  
 Delta R.T.: 0.006 min  
 Response: 230882812  
 Conc: 5.35 ng/ml



#12 4,4'-DDE

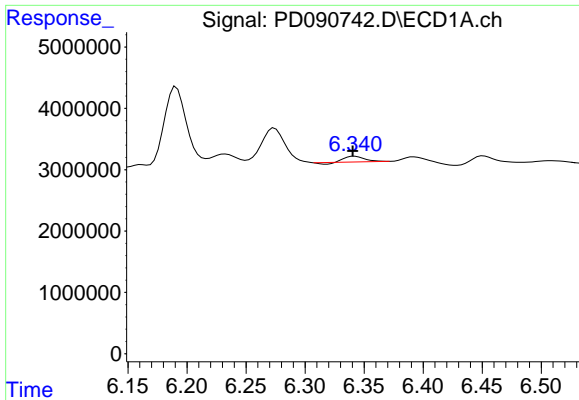
R.T.: 6.191 min  
 Delta R.T.: 0.000 min  
 Response: 15091335  
 Conc: 2.83 ng/ml



#12 4,4'-DDE

R.T.: 5.365 min  
 Delta R.T.: 0.000 min  
 Response: 81563180  
 Conc: 1.86 ng/ml

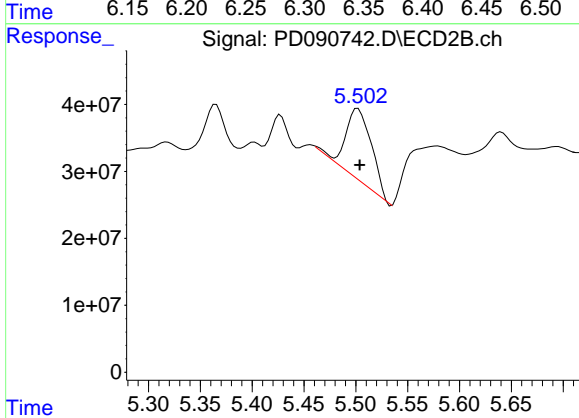




#13 Dieldrin

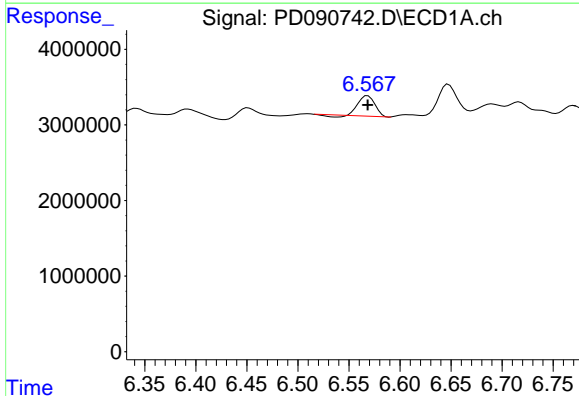
R.T.: 6.342 min  
 Delta R.T.: 0.002 min  
 Response: 939252  
 Conc: 0.16 ng/ml

Instrument : ECD\_D  
 ClientSampleId : PR132-S10-000022-20251017



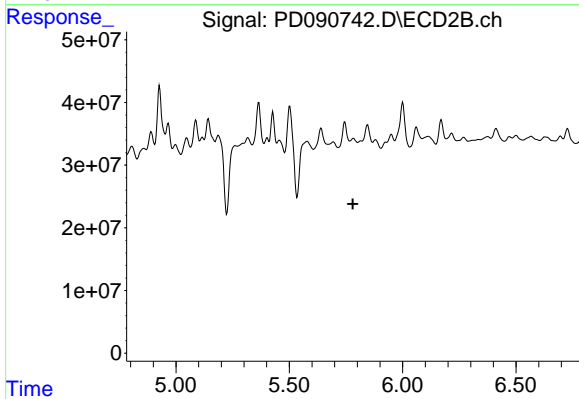
#13 Dieldrin

R.T.: 5.502 min  
 Delta R.T.: -0.002 min  
 Response: 188622381  
 Conc: 4.27 ng/ml



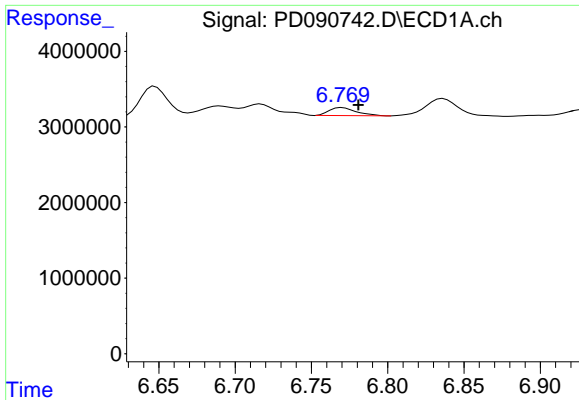
#14 Endrin

R.T.: 6.568 min  
 Delta R.T.: 0.000 min  
 Response: 2826081  
 Conc: 0.57 ng/ml



#14 Endrin

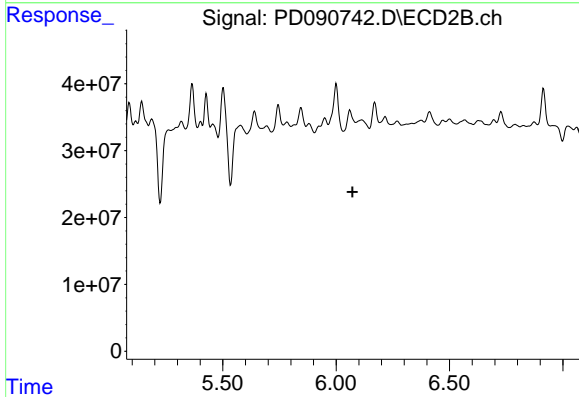
R.T.: 5.783 min  
 Delta R.T.: 0.003 min  
 Response: -16684140  
 Conc: N.D.



#15 Endosulfan II

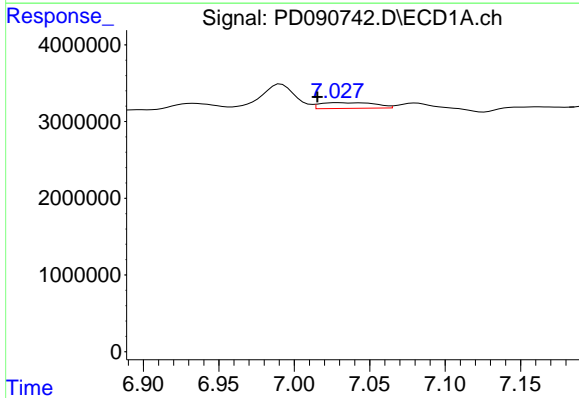
R.T.: 6.770 min  
 Delta R.T.: -0.011 min  
 Response: 1328708  
 Conc: 0.27 ng/ml

Instrument :  
 ECD\_D  
 ClientSampleId :  
 PR132-S10-000022-20251017



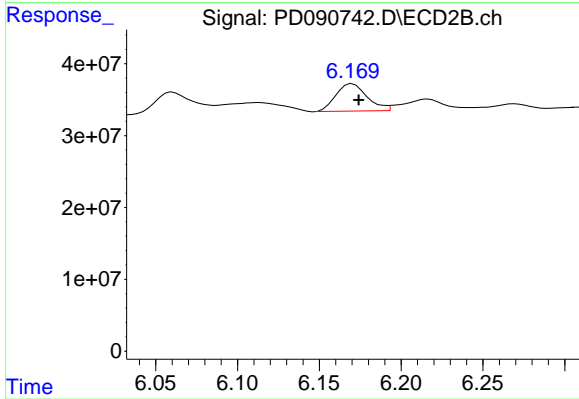
#15 Endosulfan II

R.T.: 6.061 min  
 Delta R.T.: -0.012 min  
 Response: -42417824  
 Conc: N.D.



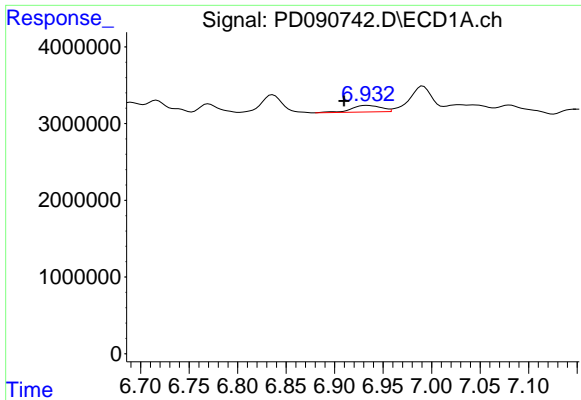
#17 4,4'-DDT

R.T.: 7.029 min  
 Delta R.T.: 0.014 min  
 Response: 1881270  
 Conc: 0.46 ng/ml



#17 4,4'-DDT

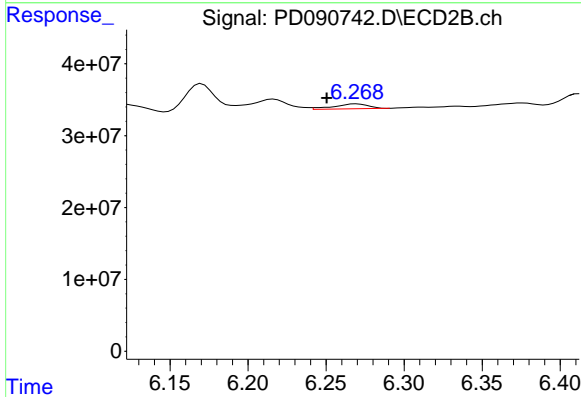
R.T.: 6.170 min  
 Delta R.T.: -0.004 min  
 Response: 50253155  
 Conc: 1.43 ng/ml



#18 Endrin aldehyde

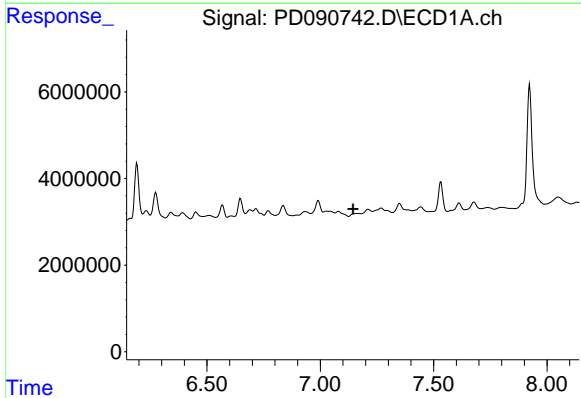
R.T.: 6.934 min  
 Delta R.T.: 0.024 min  
 Response: 1855364  
 Conc: 0.51 ng/ml

Instrument : ECD\_D  
 ClientSampleId : PR132-S10-000022-20251017



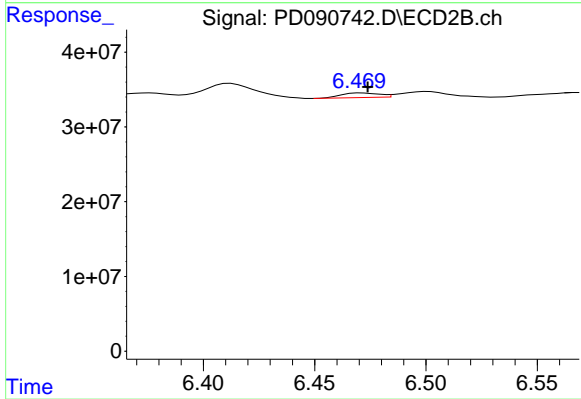
#18 Endrin aldehyde

R.T.: 6.270 min  
 Delta R.T.: 0.019 min  
 Response: 10673057  
 Conc: 0.39 ng/ml



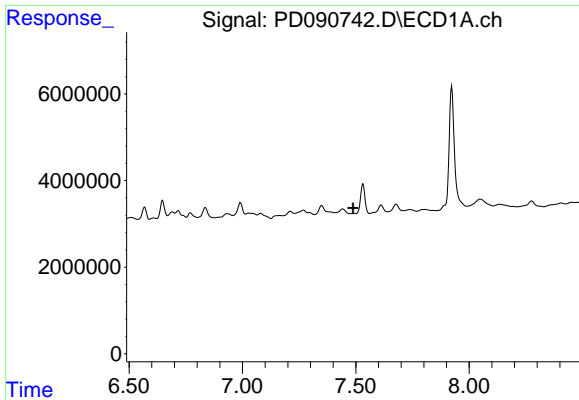
#19 Endosulfan Sulfate

R.T.: 7.162 min  
 Delta R.T.: 0.018 min  
 Response: -497895  
 Conc: N.D.



#19 Endosulfan Sulfate

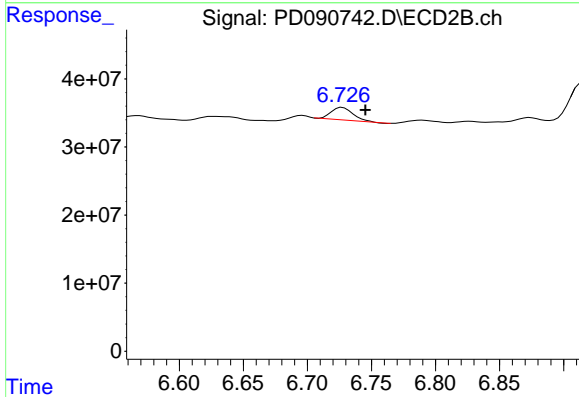
R.T.: 6.472 min  
 Delta R.T.: -0.002 min  
 Response: 7353976  
 Conc: 0.21 ng/ml



#20 Methoxychlor

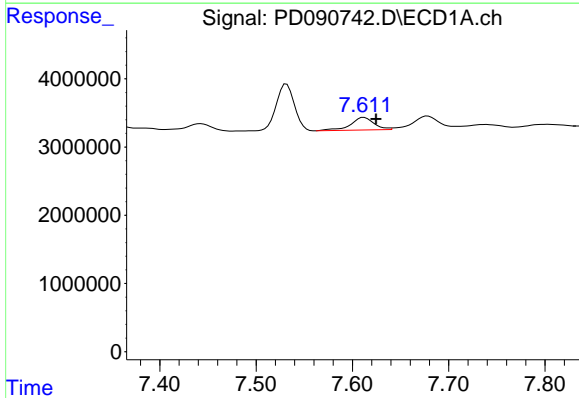
R.T.: 0.000 min  
 Exp R.T.: 7.488 min  
 Response: 0  
 Conc: N.D.

Instrument :  
 ECD\_D  
 ClientSampleId :  
 PR132-S10-000022-20251017



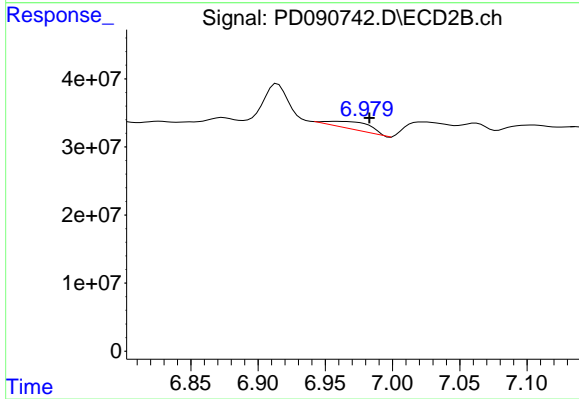
#20 Methoxychlor

R.T.: 6.727 min  
 Delta R.T.: -0.018 min  
 Response: 21718253  
 Conc: 1.25 ng/ml



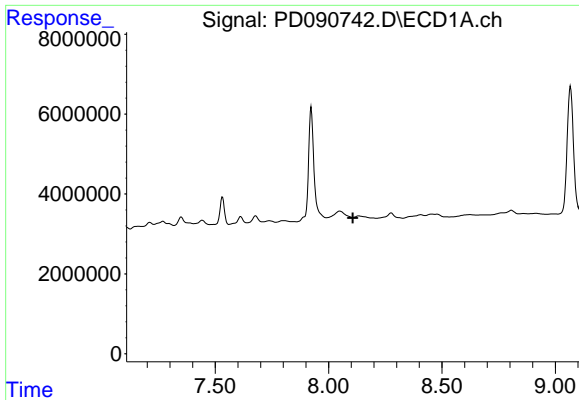
#21 Endrin ketone

R.T.: 7.612 min  
 Delta R.T.: -0.013 min  
 Response: 3125701  
 Conc: 0.64 ng/ml



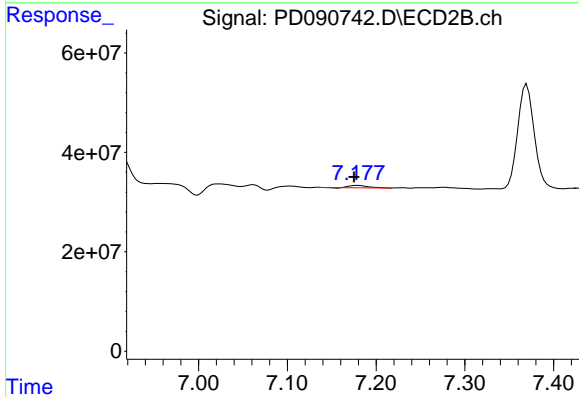
#21 Endrin ketone

R.T.: 6.957 min  
 Delta R.T.: -0.025 min  
 Response: 23253643  
 Conc: 0.62 ng/ml

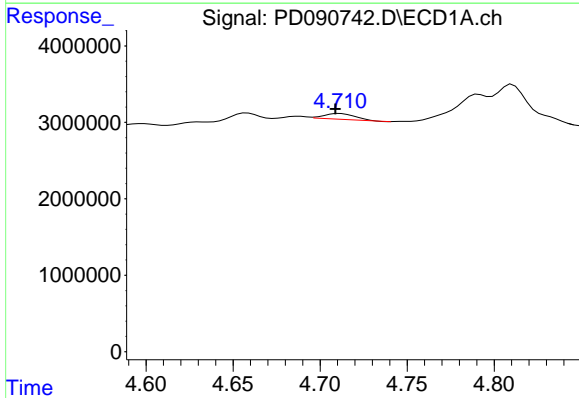


#22 Mirex  
 R.T.: 8.133 min  
 Delta R.T.: 0.025 min  
 Response: -740741  
 Conc: N.D.

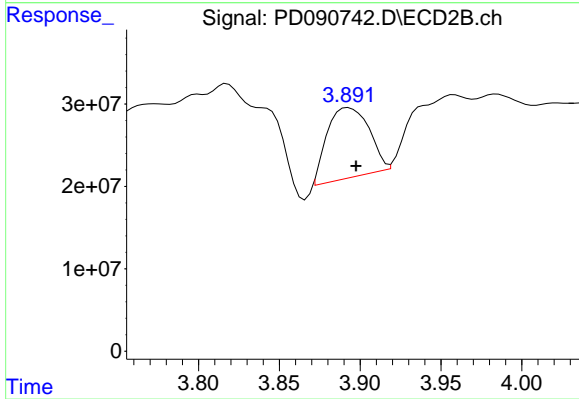
Instrument : ECD\_D  
 ClientSampleId : PR132-S10-000022-20251017



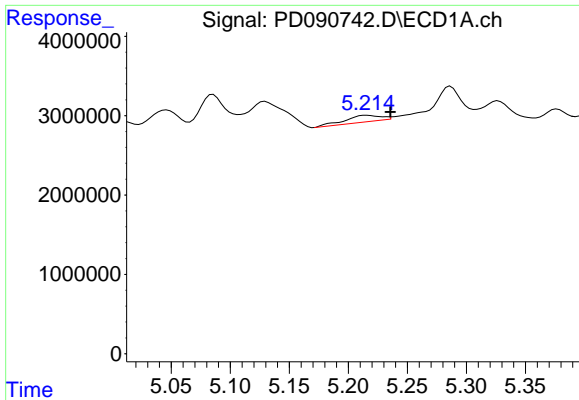
#22 Mirex  
 R.T.: 7.179 min  
 Delta R.T.: 0.004 min  
 Response: 6497324  
 Conc: 0.25 ng/ml



#23 Chlordane-1  
 R.T.: 4.711 min  
 Delta R.T.: 0.003 min  
 Response: 928943  
 Conc: 4.92 ng/ml



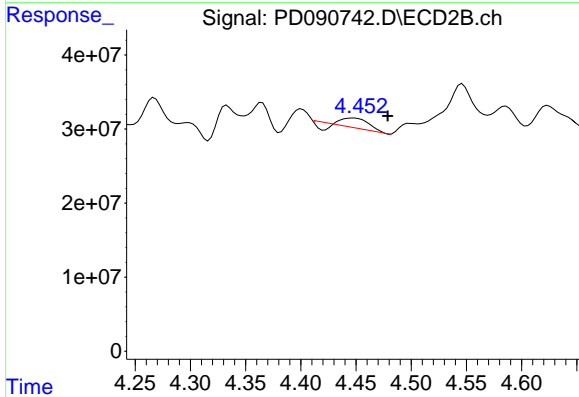
#23 Chlordane-1  
 R.T.: 3.893 min  
 Delta R.T.: -0.005 min  
 Response: 152574249  
 Conc: 122.42 ng/ml



#24 Chlordane-2

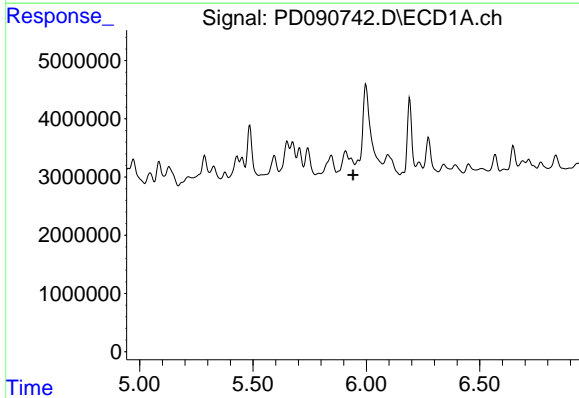
R.T.: 5.216 min  
 Delta R.T.: -0.020 min  
 Response: 1723661  
 Conc: 8.92 ng/ml

Instrument : ECD\_D  
 ClientSampleId : PR132-S10-000022-20251017



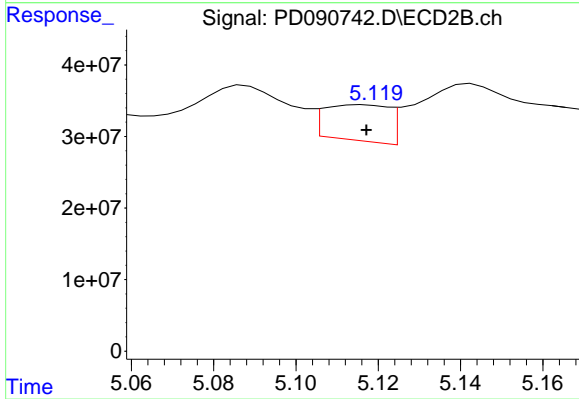
#24 Chlordane-2

R.T.: 4.448 min  
 Delta R.T.: -0.031 min  
 Response: 16572999  
 Conc: 12.70 ng/ml



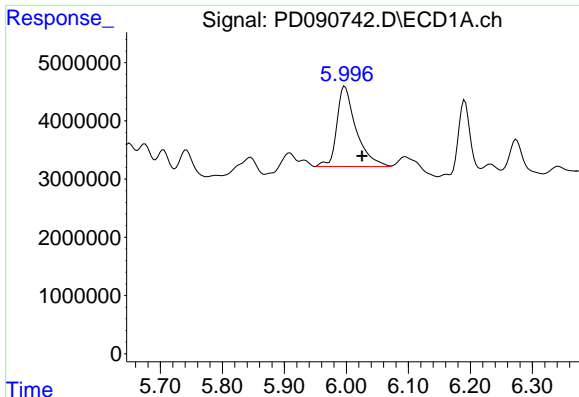
#25 Chlordane-3

R.T.: 0.000 min  
 Exp R.T. : 5.941 min  
 Response: 0  
 Conc: N.D.



#25 Chlordane-3

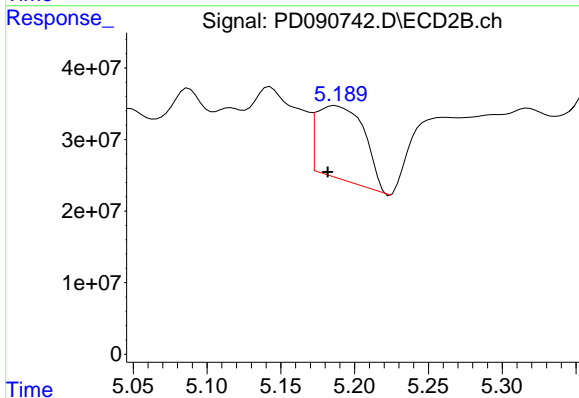
R.T.: 5.116 min  
 Delta R.T.: 0.000 min  
 Response: 54279566  
 Conc: 13.95 ng/ml



#26 Chlordane-4

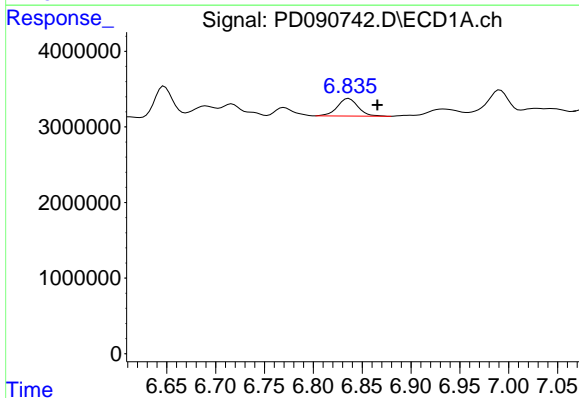
R.T.: 5.998 min  
 Delta R.T.: -0.027 min  
 Response: 29725057  
 Conc: 30.68 ng/ml

Instrument :  
 ECD\_D  
 ClientSampleId :  
 PR132-S10-000022-20251017



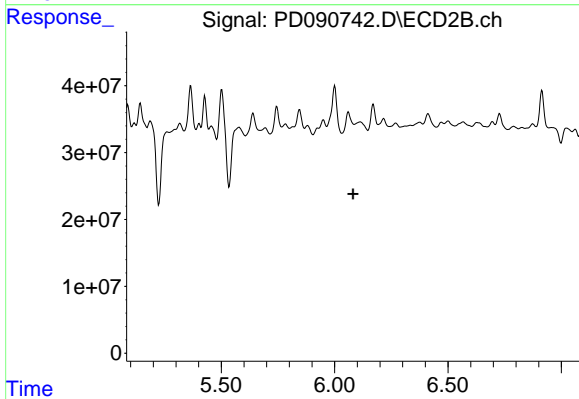
#26 Chlordane-4

R.T.: 5.187 min  
 Delta R.T.: 0.005 min  
 Response: 230882812  
 Conc: 69.10 ng/ml



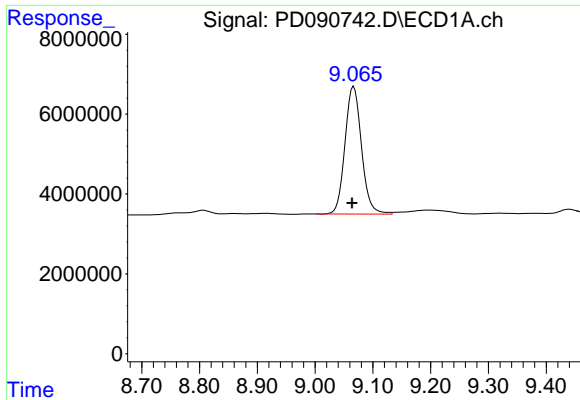
#27 Chlordane-5

R.T.: 6.836 min  
 Delta R.T.: -0.029 min  
 Response: 3429694  
 Conc: 22.83 ng/ml



#27 Chlordane-5

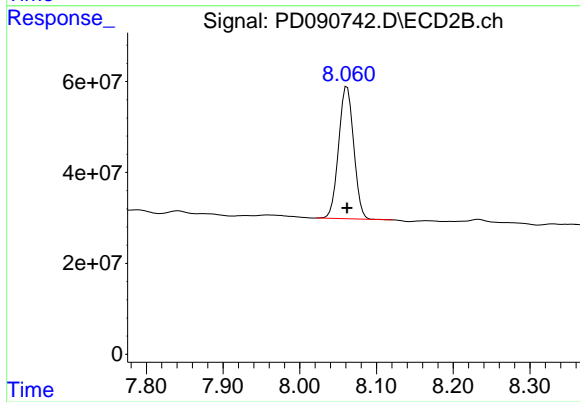
R.T.: 6.061 min  
 Delta R.T.: -0.020 min  
 Response: -42417824  
 Conc: N.D.



#28 Decachlorobiphenyl

R.T.: 9.067 min  
Delta R.T.: 0.003 min  
Response: 63345238  
Conc: 13.54 ng/ml

Instrument :  
ECD\_D  
ClientSampleId :  
PR132-S10-000022-20251017



#28 Decachlorobiphenyl

R.T.: 8.062 min  
Delta R.T.: 0.000 min  
Response: 397353187  
Conc: 13.12 ng/ml