

Data Path : Z:\pestpcbsrv\HPCHEM1\ECD\_D\Data\PD102125\  
 Data File : PD090743.D  
 Signal(s) : Signal #1: ECD1A.ch Signal #2: ECD2B.ch  
 Acq On : 21 Oct 2025 18:57  
 Operator : AR\AJ  
 Sample : Q3393-02  
 Misc :  
 ALS Vial : 21 Sample Multiplier: 1

Instrument :  
 ECD\_D  
 ClientSampleId :  
 PR132-S10-022047-20251017

Integration File signal 1: autoint1.e  
 Integration File signal 2: autoint2.e  
 Quant Time: Oct 23 13:12:23 2025  
 Quant Method : Z:\pestpcbsrv\HPCHEM1\ECD\_D\Method\PD101725.M  
 Quant Title : GC Extractables  
 QLast Update : Fri Oct 17 17:43:28 2025  
 Response via : Initial Calibration  
 Integrator: ChemStation

Volume Inj. : 1 µl  
 Signal #1 Phase : ZB-MR2 Signal #2 Phase: ZB-MR2  
 Signal #1 Info : 30M x 0.32mm x0.5 Signal #2 Info : 30M x 0.32mm x 0.25µm

Compound	RT#1	RT#2	Resp#1	Resp#2	ng/ml	ng/ml
System Monitoring Compounds						
1) SA Tetrachlo...	3.544	2.874	90849716	511.6E6	29.173	17.181 #
28) SA Decachlor...	9.066	8.061	75577531	527.2E6	16.156	17.405
Target Compounds						
2) A alpha-BHC	3.990	3.372	320892	5024407	0.045	0.098 #
3) MA gamma-BHC...	4.299f	3.724	428473	791058	0.063	0.017 #
4) MA Heptachlor	4.944f	4.062	866989	1979795	0.155	0.044 #
5) MB Aldrin	5.254	4.360	698937	6320491	0.107	0.136 #
6) B beta-BHC	4.490f	4.038f	755069	9228614	0.288	0.465 #
7) B delta-BHC	4.771	4.267	2041290	6546244	0.302	0.137 #
8) B Heptachlo...	0.000	4.846f	0	14812324	N.D.	0.347 #
9) A Endosulfan I	6.092f	5.254f	1849070	13018208	0.334	0.330
10) B gamma-Chl...	5.910f	5.117	598269	6434598	0.101	0.143 #
11) B alpha-Chl...	5.997f	5.204f	16373544	32166365	2.649	0.746 #
12) B 4,4'-DDE	6.190	5.366	47053031	279.8E6	8.834	6.382 #
13) MA Dieldrin	6.368f	5.504	-237978	29786063	N.D.	0.674
14) MA Endrin	6.569	5.786	499261	1330375	0.101	0.033 #
17) MA 4,4'-DDT	6.990f	6.172	2188045	19554236	0.532	0.558
18) B Endrin al...	6.944f	6.250	828755	4705244	0.226	0.170
19) B Endosulfa...	7.165f	6.474	-165660	7240168	N.D.	0.202
20) A Methoxychlor	0.000	6.728f	0	9964635	N.D.	0.572 #
21) B Endrin ke...	7.613	6.958f	1629681	7291768	0.335	0.193 #
22) Mirex	0.000	7.170	0	6192281	N.D.	0.241 #
23) Chlordane-1	0.000	3.891	0	14150377	N.D.	11.354 #
24) Chlordane-2	5.254	4.500f	698937	6649030	3.619	5.097 #
25) Chlordane-3	0.000	5.117	0	6434598	N.D.	1.653 #
26) Chlordane-4	5.997f	5.204f	16373544	32166365	16.899	9.627 #

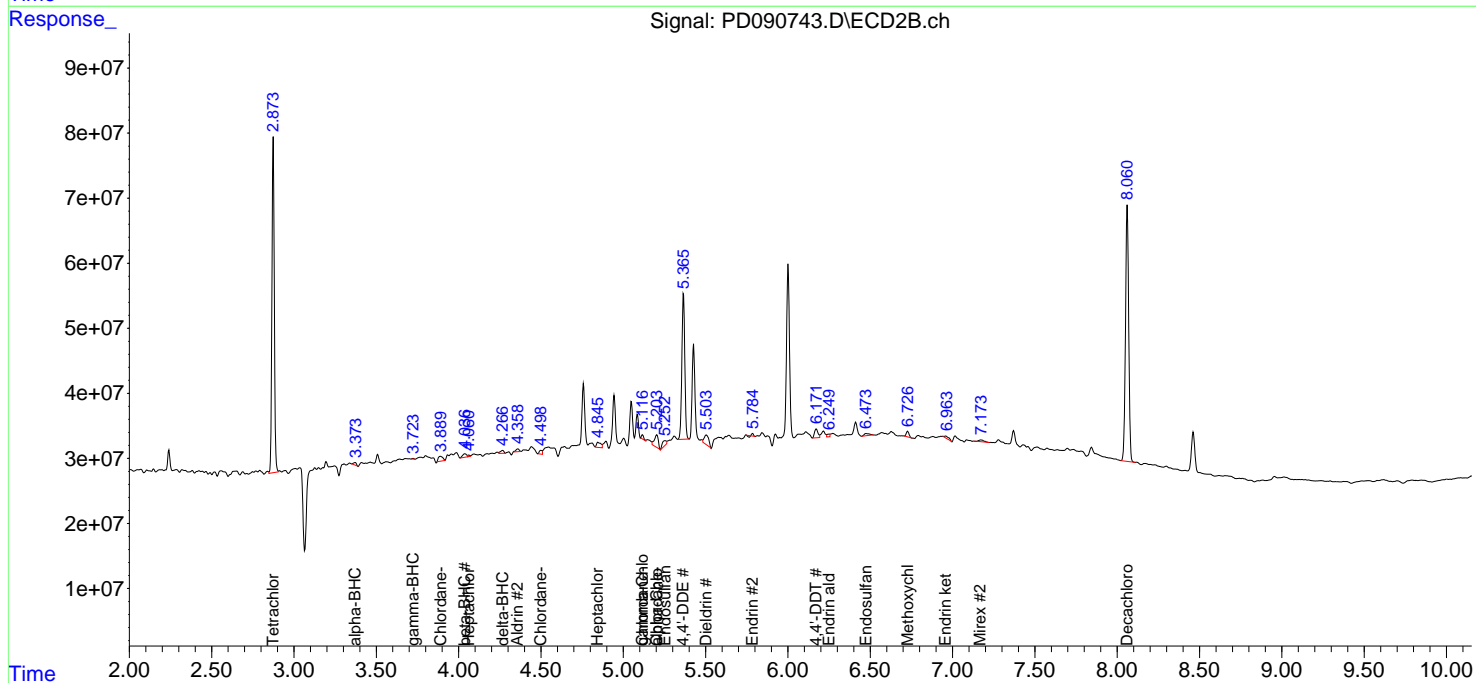
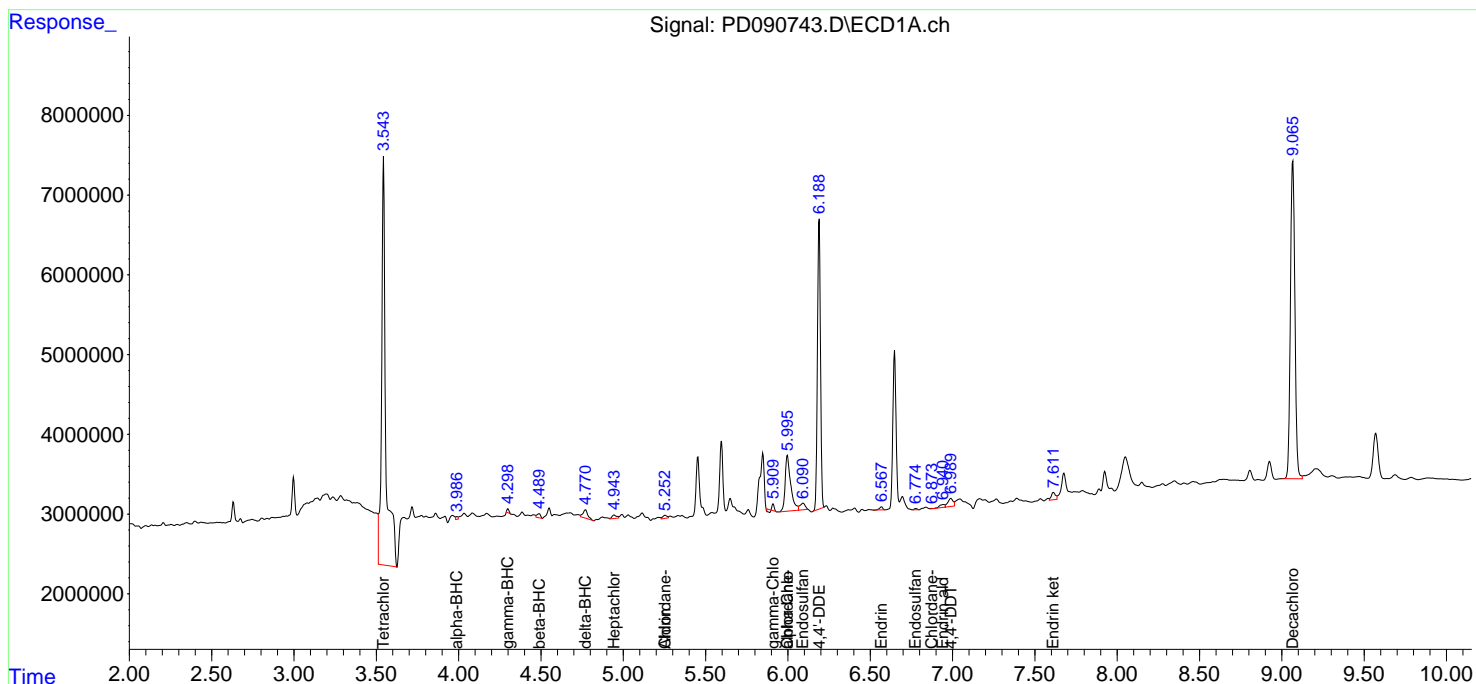
(f)=RT Delta > 1/2 Window (#)=Amounts differ by > 25% (m)=manual int.

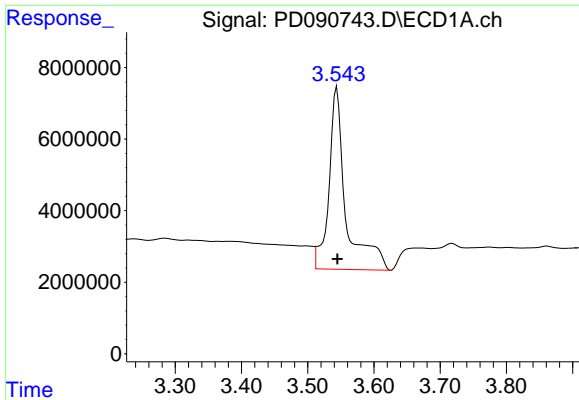
Data Path : Z:\pestpcbsrv\HPCHEM1\ECD\_D\Data\PD102125\  
 Data File : PD090743.D  
 Signal(s) : Signal #1: ECD1A.ch Signal #2: ECD2B.ch  
 Acq On : 21 Oct 2025 18:57  
 Operator : AR\AJ  
 Sample : Q3393-02  
 Misc :  
 ALS Vial : 21 Sample Multiplier: 1

Instrument :  
 ECD\_D  
 ClientSampleId :  
 PR132-S10-022047-20251017

Integration File signal 1: autoint1.e  
 Integration File signal 2: autoint2.e  
 Quant Time: Oct 23 13:12:23 2025  
 Quant Method : Z:\pestpcbsrv\HPCHEM1\ECD\_D\Method\PD101725.M  
 Quant Title : GC Extractables  
 QLast Update : Fri Oct 17 17:43:28 2025  
 Response via : Initial Calibration  
 Integrator: ChemStation

Volume Inj. : 1 µl  
 Signal #1 Phase : ZB-MR1 Signal #2 Phase: ZB-MR2  
 Signal #1 Info : 30M x 0.32mm x0.5 Signal #2 Info : 30M x 0.32mm x 0.25µm

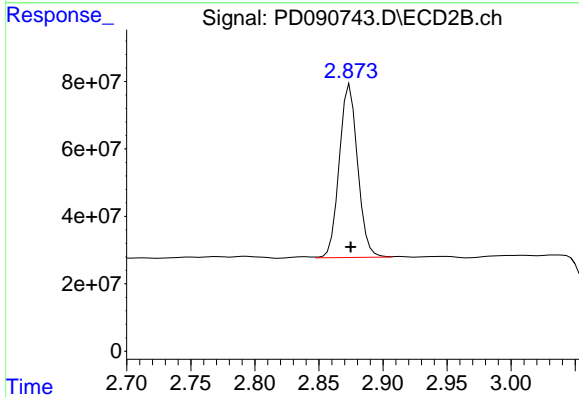




#1 Tetrachloro-m-xylene

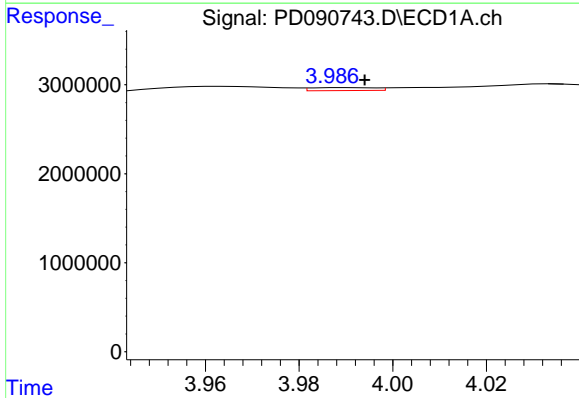
R.T.: 3.544 min  
 Delta R.T.: 0.000 min  
 Response: 90849716  
 Conc: 29.17 ng/ml

Instrument :  
 ECD\_D  
 ClientSampleId :  
 PR132-S10-022047-20251017



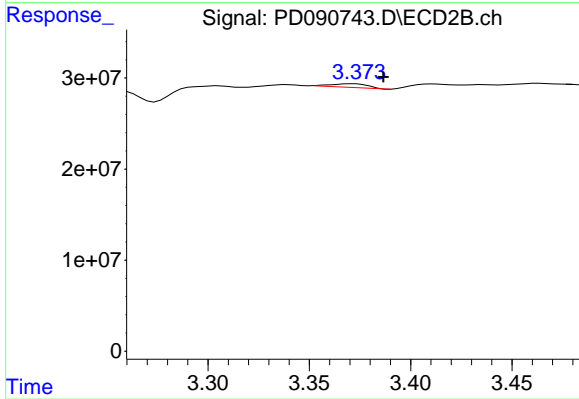
#1 Tetrachloro-m-xylene

R.T.: 2.874 min  
 Delta R.T.: 0.000 min  
 Response: 511599345  
 Conc: 17.18 ng/ml



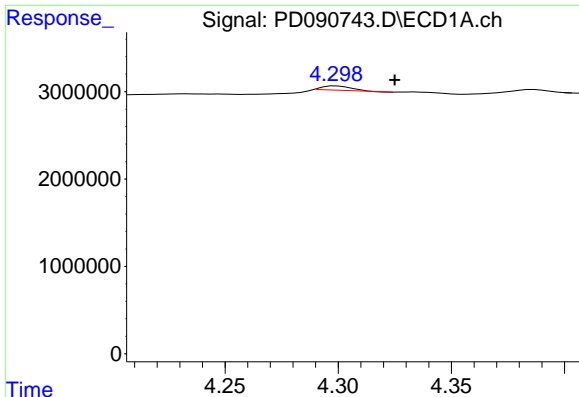
#2 alpha-BHC

R.T.: 3.990 min  
 Delta R.T.: -0.004 min  
 Response: 320892  
 Conc: 0.04 ng/ml



#2 alpha-BHC

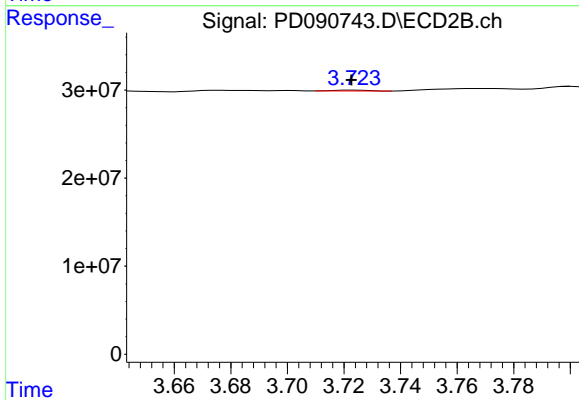
R.T.: 3.372 min  
 Delta R.T.: -0.015 min  
 Response: 5024407  
 Conc: 0.10 ng/ml



#3 gamma-BHC (Lindane)

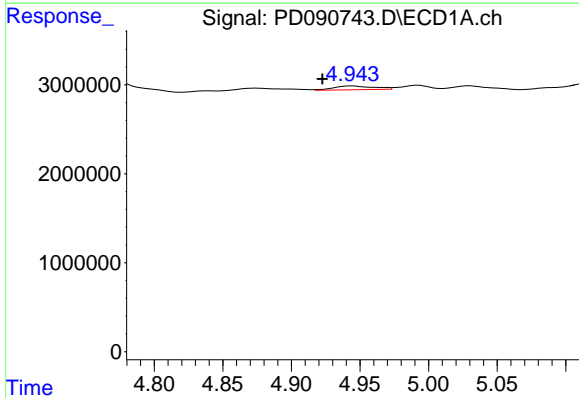
R.T.: 4.299 min  
 Delta R.T.: -0.026 min  
 Response: 428473  
 Conc: 0.06 ng/ml

Instrument :  
 ECD\_D  
 ClientSampleId :  
 PR132-S10-022047-20251017



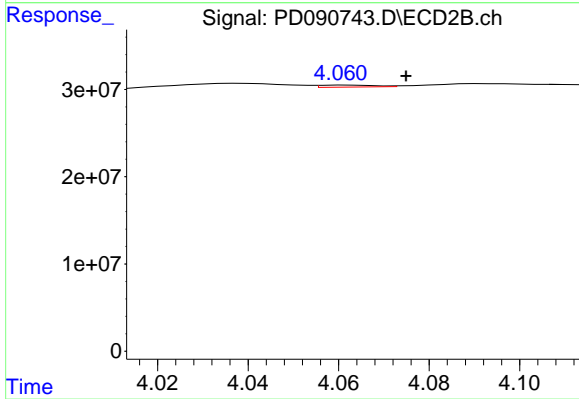
#3 gamma-BHC (Lindane)

R.T.: 3.724 min  
 Delta R.T.: 0.001 min  
 Response: 791058  
 Conc: 0.02 ng/ml



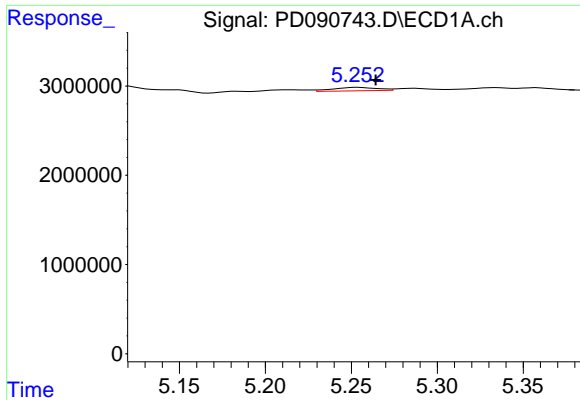
#4 Heptachlor

R.T.: 4.944 min  
 Delta R.T.: 0.021 min  
 Response: 866989  
 Conc: 0.16 ng/ml



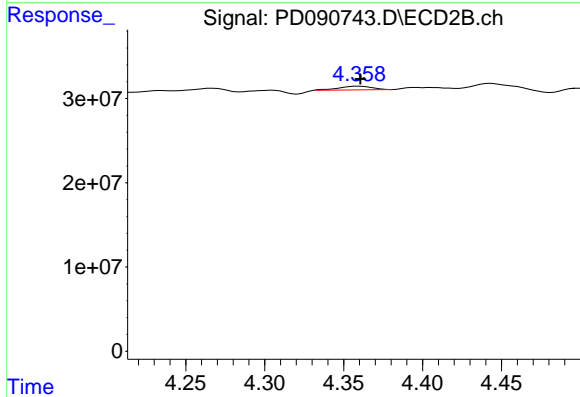
#4 Heptachlor

R.T.: 4.062 min  
 Delta R.T.: -0.013 min  
 Response: 1979795  
 Conc: 0.04 ng/ml

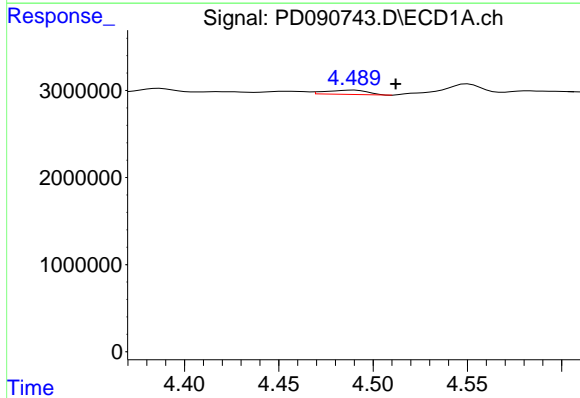


#5 Aldrin  
 R.T.: 5.254 min  
 Delta R.T.: -0.011 min  
 Response: 698937  
 Conc: 0.11 ng/ml

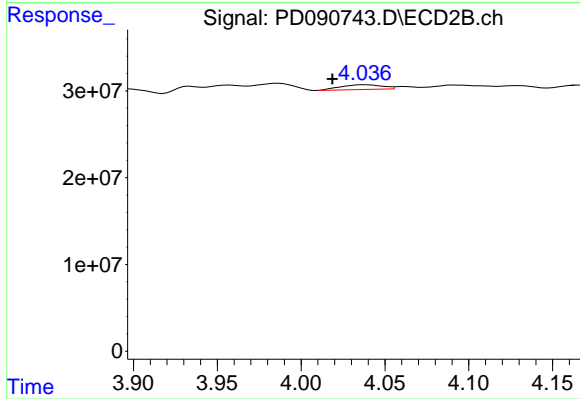
Instrument :  
 ECD\_D  
 ClientSampleId :  
 PR132-S10-022047-20251017



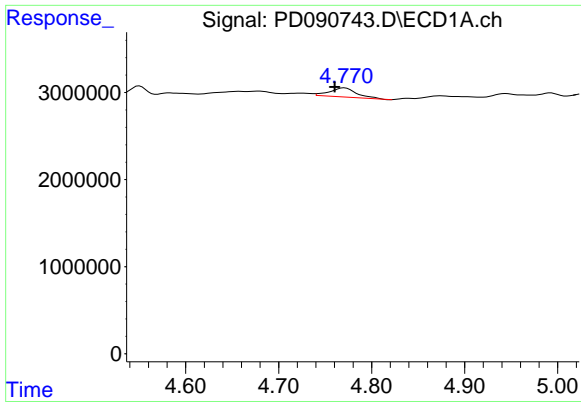
#5 Aldrin  
 R.T.: 4.360 min  
 Delta R.T.: 0.000 min  
 Response: 6320491  
 Conc: 0.14 ng/ml



#6 beta-BHC  
 R.T.: 4.490 min  
 Delta R.T.: -0.022 min  
 Response: 755069  
 Conc: 0.29 ng/ml



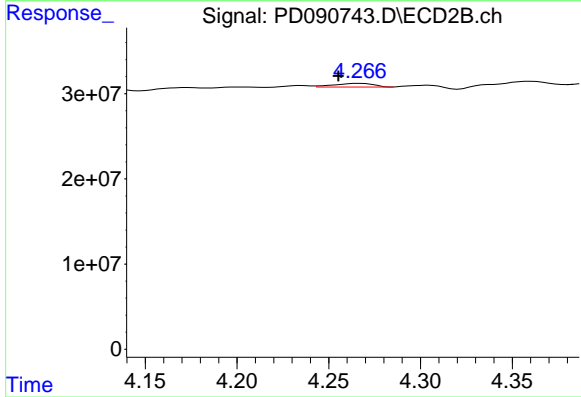
#6 beta-BHC  
 R.T.: 4.038 min  
 Delta R.T.: 0.020 min  
 Response: 9228614  
 Conc: 0.47 ng/ml



#7 delta-BHC

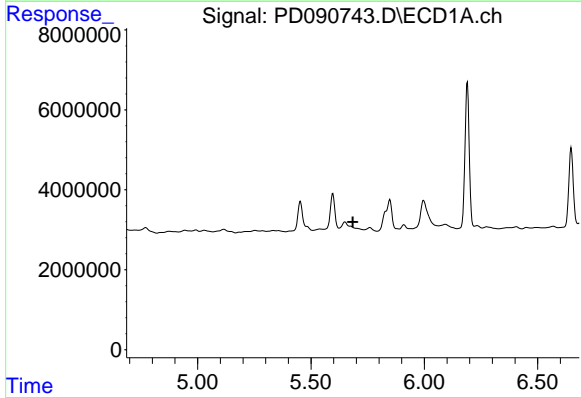
R.T.: 4.771 min  
 Delta R.T.: 0.011 min  
 Response: 2041290  
 Conc: 0.30 ng/ml

Instrument : ECD\_D  
 ClientSampleId : PR132-S10-022047-20251017



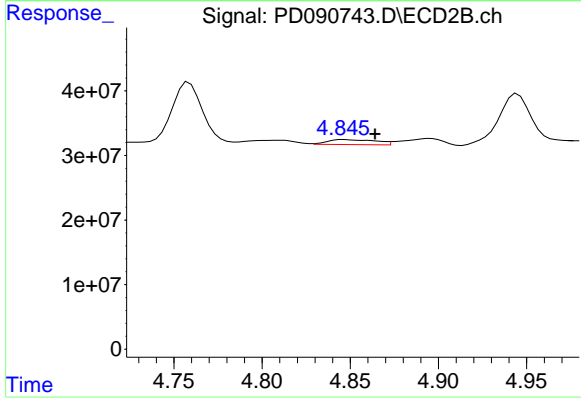
#7 delta-BHC

R.T.: 4.267 min  
 Delta R.T.: 0.012 min  
 Response: 6546244  
 Conc: 0.14 ng/ml



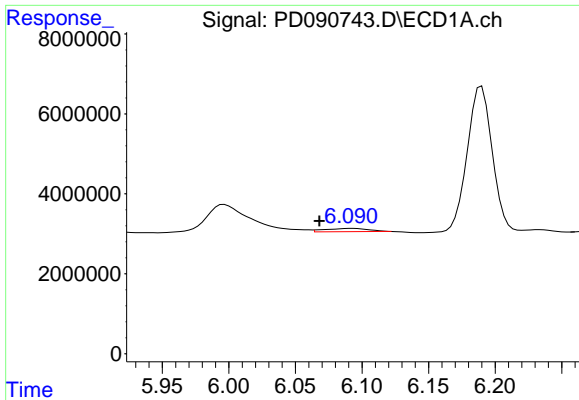
#8 Heptachlor epoxide

R.T.: 0.000 min  
 Exp R.T. : 5.684 min  
 Response: 0  
 Conc: N.D.



#8 Heptachlor epoxide

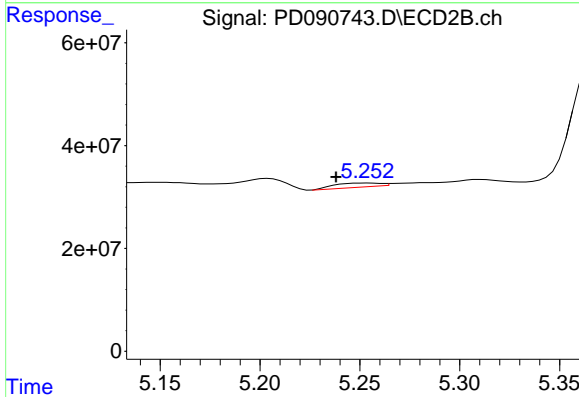
R.T.: 4.846 min  
 Delta R.T.: -0.018 min  
 Response: 14812324  
 Conc: 0.35 ng/ml



#9 Endosulfan I

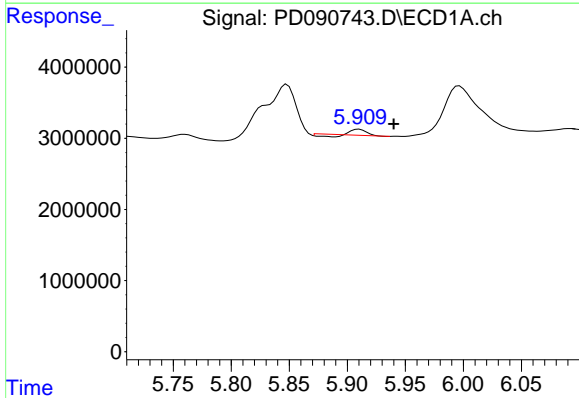
R.T.: 6.092 min  
 Delta R.T.: 0.024 min  
 Response: 1849070  
 Conc: 0.33 ng/ml

Instrument : ECD\_D  
 ClientSampleId : PR132-S10-022047-20251017



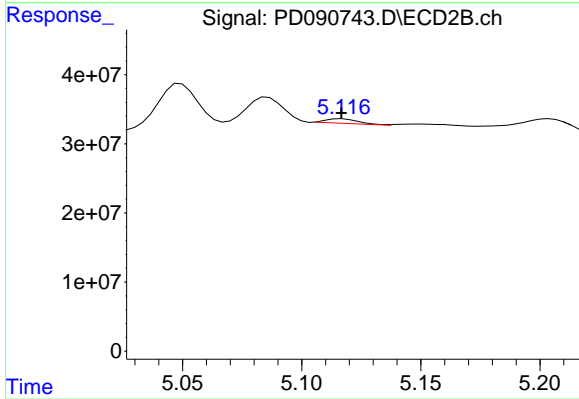
#9 Endosulfan I

R.T.: 5.254 min  
 Delta R.T.: 0.016 min  
 Response: 13018208  
 Conc: 0.33 ng/ml



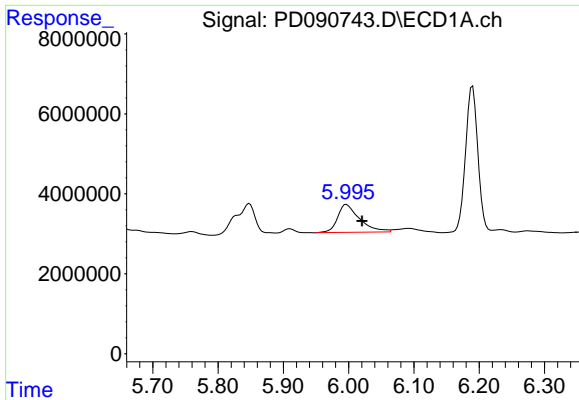
#10 gamma-Chlordane

R.T.: 5.910 min  
 Delta R.T.: -0.030 min  
 Response: 598269  
 Conc: 0.10 ng/ml



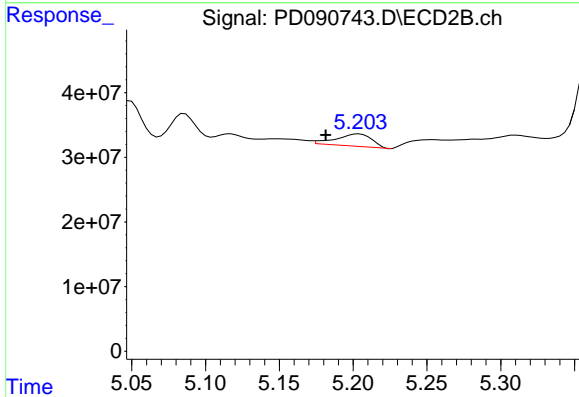
#10 gamma-Chlordane

R.T.: 5.117 min  
 Delta R.T.: 0.000 min  
 Response: 6434598  
 Conc: 0.14 ng/ml

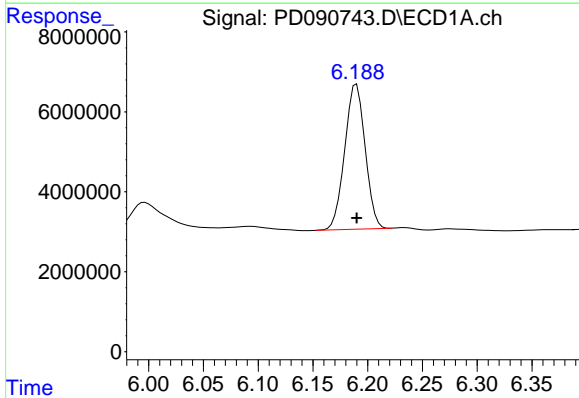


#11 alpha-Chlordane  
 R.T.: 5.997 min  
 Delta R.T.: -0.024 min  
 Response: 16373544  
 Conc: 2.65 ng/ml

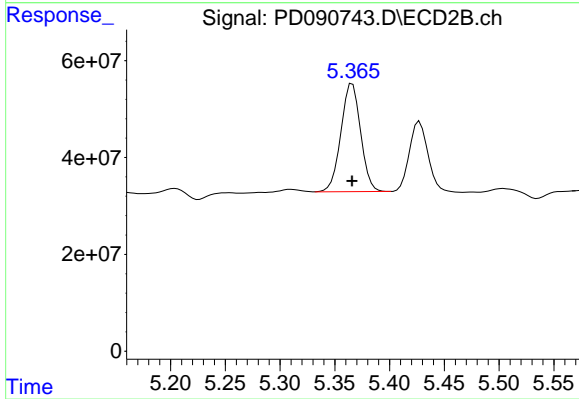
Instrument : ECD\_D  
 ClientSampleId : PR132-S10-022047-20251017



#11 alpha-Chlordane  
 R.T.: 5.204 min  
 Delta R.T.: 0.023 min  
 Response: 32166365  
 Conc: 0.75 ng/ml

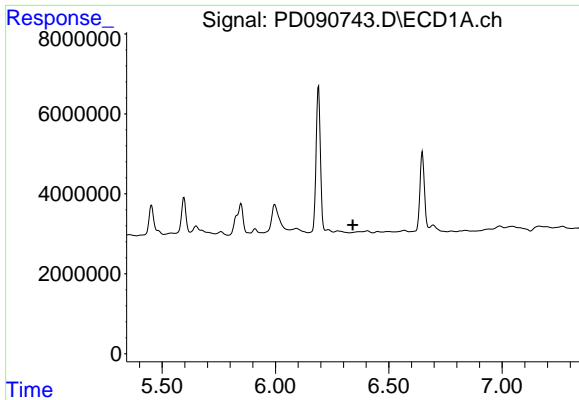


#12 4,4'-DDE  
 R.T.: 6.190 min  
 Delta R.T.: 0.000 min  
 Response: 47053031  
 Conc: 8.83 ng/ml



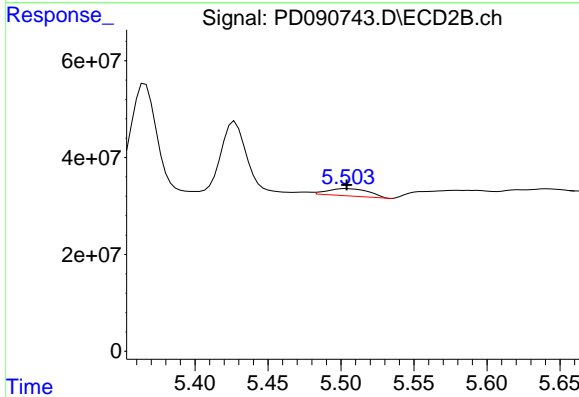
#12 4,4'-DDE  
 R.T.: 5.366 min  
 Delta R.T.: 0.000 min  
 Response: 279756402  
 Conc: 6.38 ng/ml



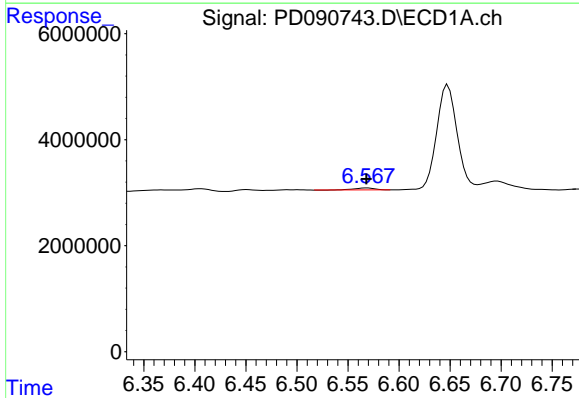


#13 Dieldrin  
 R.T.: 6.368 min  
 Delta R.T.: 0.027 min  
 Response: -237978  
 Conc: N.D.

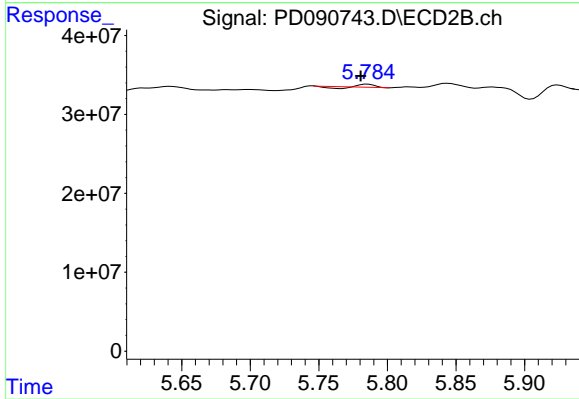
Instrument : ECD\_D  
 ClientSampleId : PR132-S10-022047-20251017



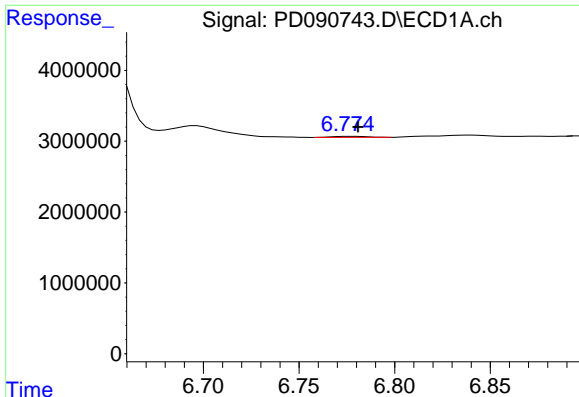
#13 Dieldrin  
 R.T.: 5.504 min  
 Delta R.T.: 0.000 min  
 Response: 29786063  
 Conc: 0.67 ng/ml



#14 Endrin  
 R.T.: 6.569 min  
 Delta R.T.: 0.000 min  
 Response: 499261  
 Conc: 0.10 ng/ml



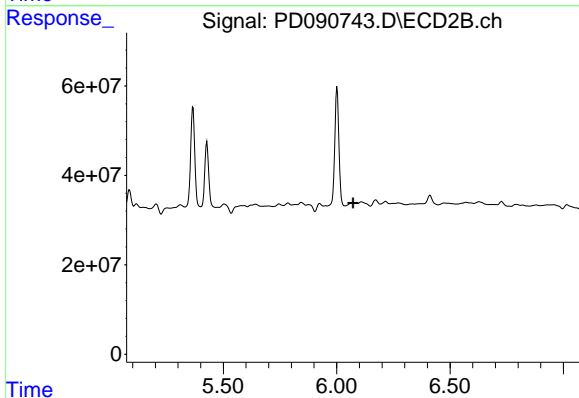
#14 Endrin  
 R.T.: 5.786 min  
 Delta R.T.: 0.005 min  
 Response: 1330375  
 Conc: 0.03 ng/ml



#15 Endosulfan II

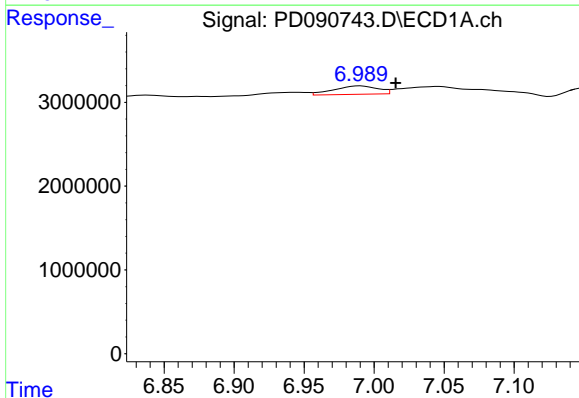
R.T.: 6.776 min  
 Delta R.T.: -0.004 min  
 Response: 195670  
 Conc: 0.04 ng/ml

Instrument :  
 ECD\_D  
 ClientSampleId :  
 PR132-S10-022047-20251017



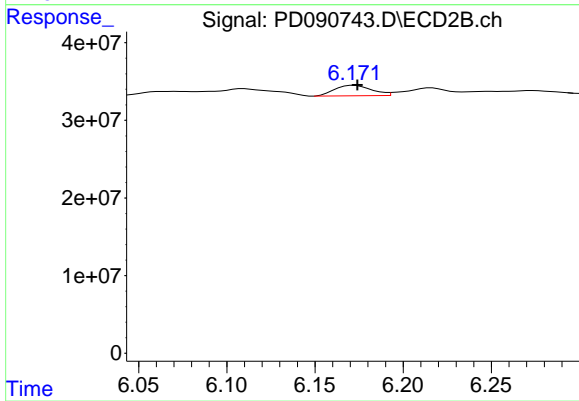
#15 Endosulfan II

R.T.: 6.071 min  
 Delta R.T.: -0.001 min  
 Response: -86995364  
 Conc: N.D.



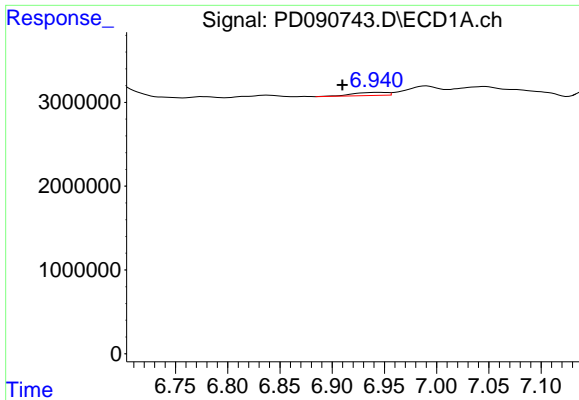
#17 4,4'-DDT

R.T.: 6.990 min  
 Delta R.T.: -0.025 min  
 Response: 2188045  
 Conc: 0.53 ng/ml



#17 4,4'-DDT

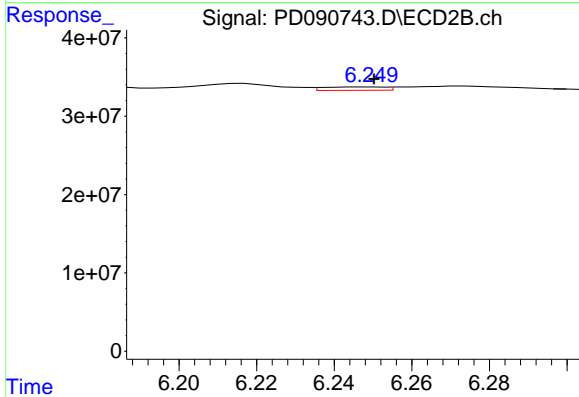
R.T.: 6.172 min  
 Delta R.T.: -0.002 min  
 Response: 19554236  
 Conc: 0.56 ng/ml



#18 Endrin aldehyde

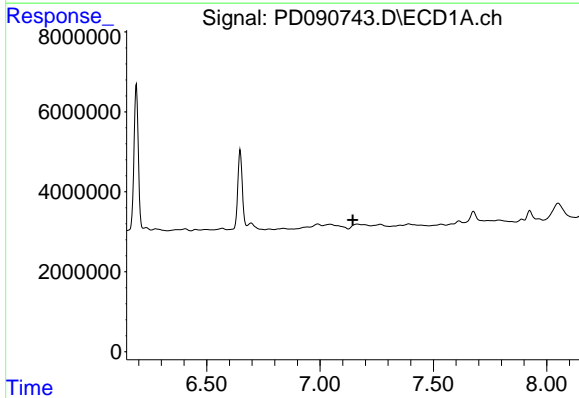
R.T.: 6.944 min  
 Delta R.T.: 0.034 min  
 Response: 828755  
 Conc: 0.23 ng/ml

Instrument : ECD\_D  
 ClientSampleId : PR132-S10-022047-20251017



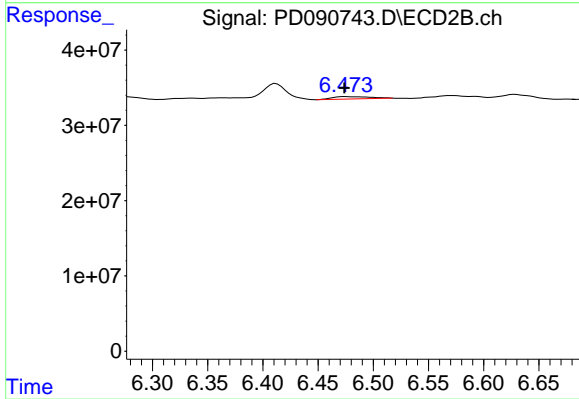
#18 Endrin aldehyde

R.T.: 6.250 min  
 Delta R.T.: 0.000 min  
 Response: 4705244  
 Conc: 0.17 ng/ml



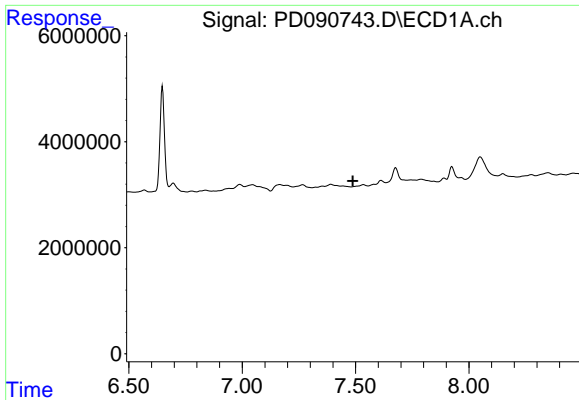
#19 Endosulfan Sulfate

R.T.: 7.165 min  
 Delta R.T.: 0.021 min  
 Response: -165660  
 Conc: N.D.



#19 Endosulfan Sulfate

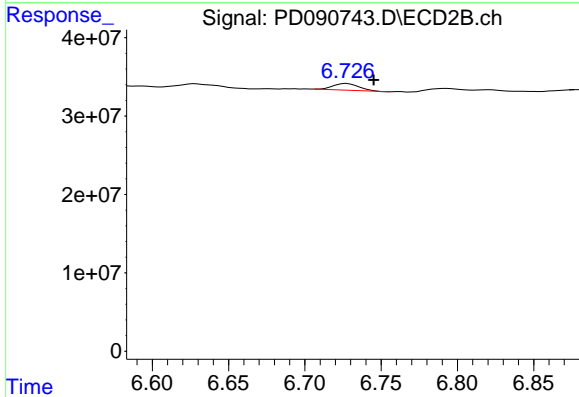
R.T.: 6.474 min  
 Delta R.T.: 0.000 min  
 Response: 7240168  
 Conc: 0.20 ng/ml



#20 Methoxychlor

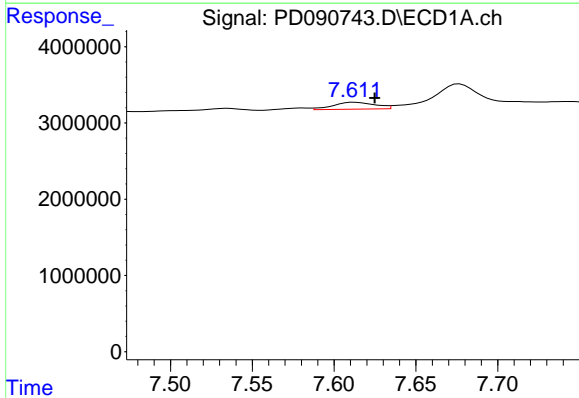
R.T.: 0.000 min  
 Exp R.T.: 7.488 min  
 Response: 0  
 Conc: N.D.

Instrument : ECD\_D  
 ClientSampleId : PR132-S10-022047-20251017



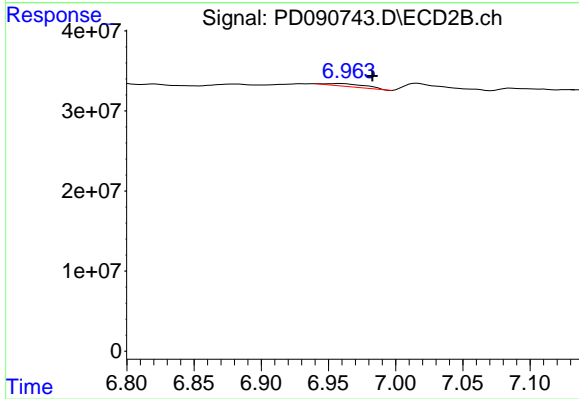
#20 Methoxychlor

R.T.: 6.728 min  
 Delta R.T.: -0.018 min  
 Response: 9964635  
 Conc: 0.57 ng/ml



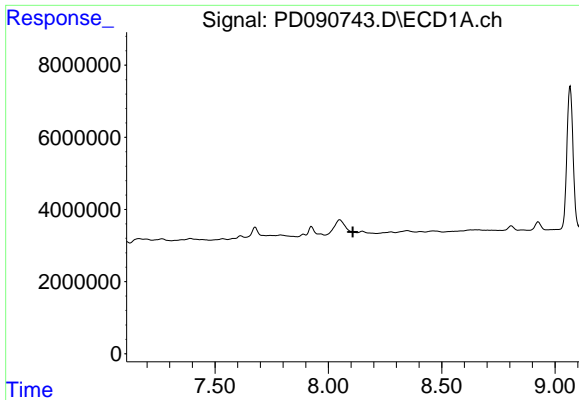
#21 Endrin ketone

R.T.: 7.613 min  
 Delta R.T.: -0.012 min  
 Response: 1629681  
 Conc: 0.34 ng/ml



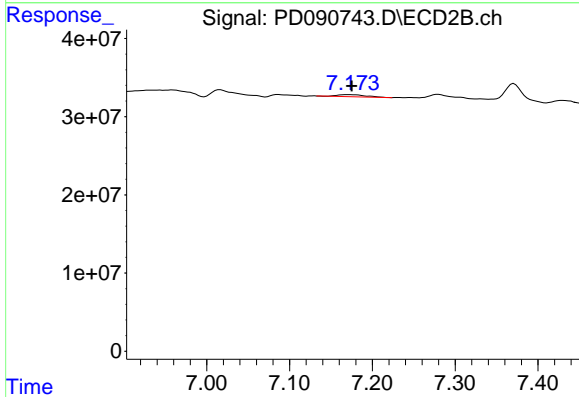
#21 Endrin ketone

R.T.: 6.958 min  
 Delta R.T.: -0.025 min  
 Response: 7291768  
 Conc: 0.19 ng/ml

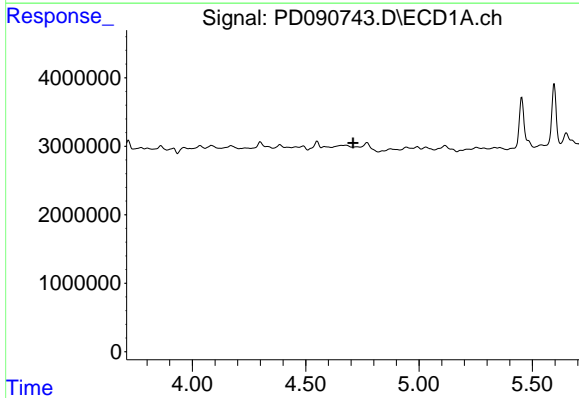


#22 Mirex  
 R.T.: 0.000 min  
 Exp R.T.: 8.107 min  
 Response: 0  
 Conc: N.D.

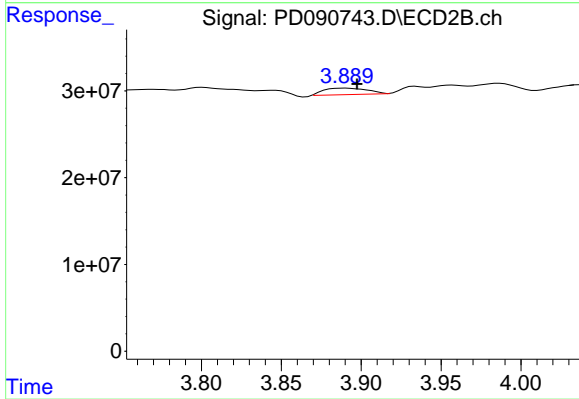
Instrument :  
 ECD\_D  
 ClientSampleId :  
 PR132-S10-022047-20251017



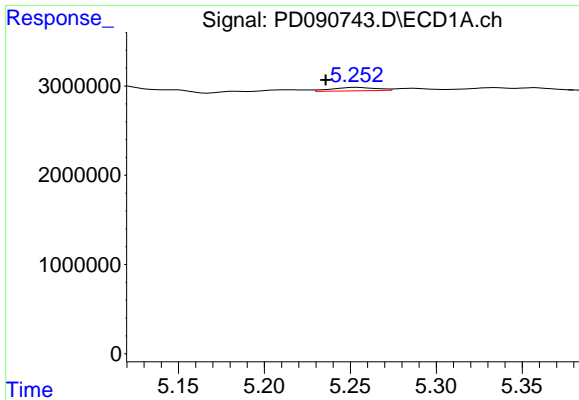
#22 Mirex  
 R.T.: 7.170 min  
 Delta R.T.: -0.006 min  
 Response: 6192281  
 Conc: 0.24 ng/ml



#23 Chlordane-1  
 R.T.: 0.000 min  
 Exp R.T.: 4.709 min  
 Response: 0  
 Conc: N.D.



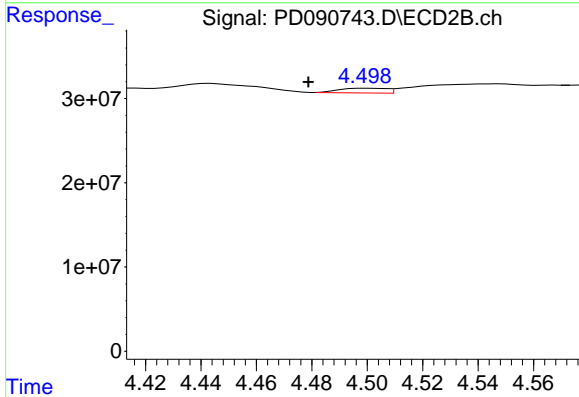
#23 Chlordane-1  
 R.T.: 3.891 min  
 Delta R.T.: -0.007 min  
 Response: 14150377  
 Conc: 11.35 ng/ml



#24 Chlordane-2

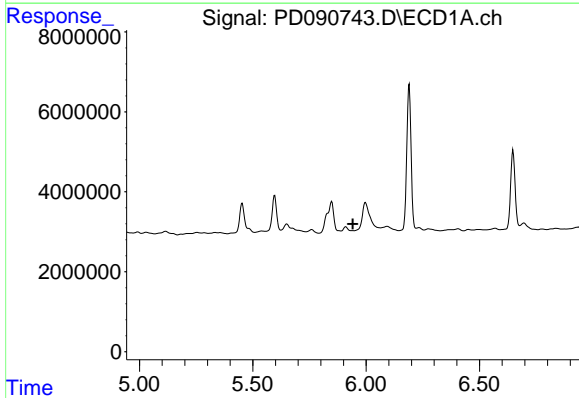
R.T.: 5.254 min  
 Delta R.T.: 0.018 min  
 Response: 698937  
 Conc: 3.62 ng/ml

Instrument : ECD\_D  
 ClientSampleId : PR132-S10-022047-20251017



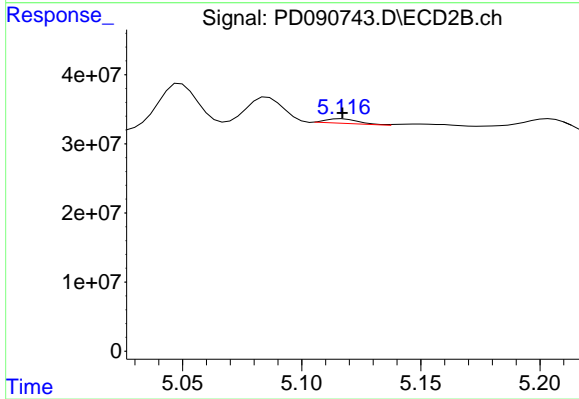
#24 Chlordane-2

R.T.: 4.500 min  
 Delta R.T.: 0.021 min  
 Response: 6649030  
 Conc: 5.10 ng/ml



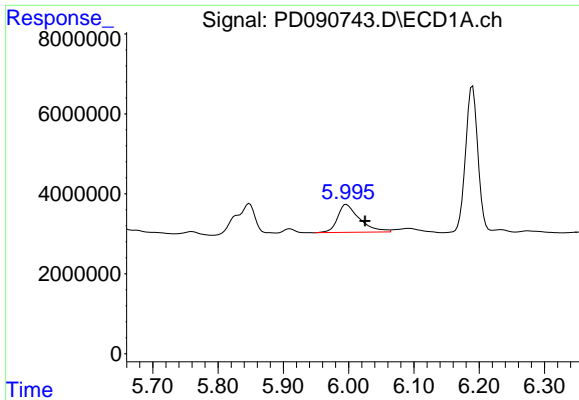
#25 Chlordane-3

R.T.: 0.000 min  
 Exp R.T. : 5.941 min  
 Response: 0  
 Conc: N.D.



#25 Chlordane-3

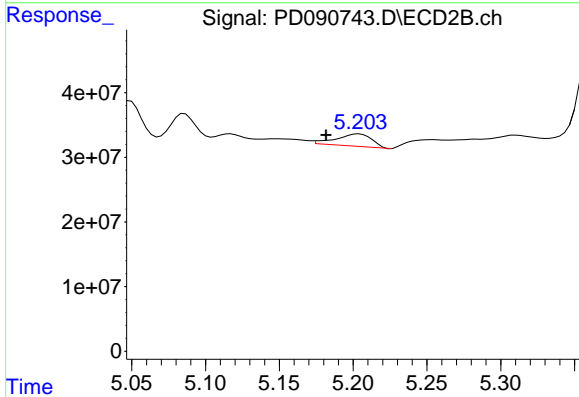
R.T.: 5.117 min  
 Delta R.T.: 0.000 min  
 Response: 6434598  
 Conc: 1.65 ng/ml



#26 Chlordane-4

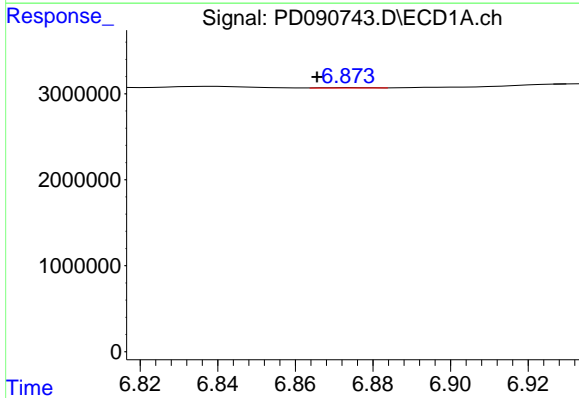
R.T.: 5.997 min  
 Delta R.T.: -0.029 min  
 Response: 16373544  
 Conc: 16.90 ng/ml

Instrument : ECD\_D  
 ClientSampleId : PR132-S10-022047-20251017



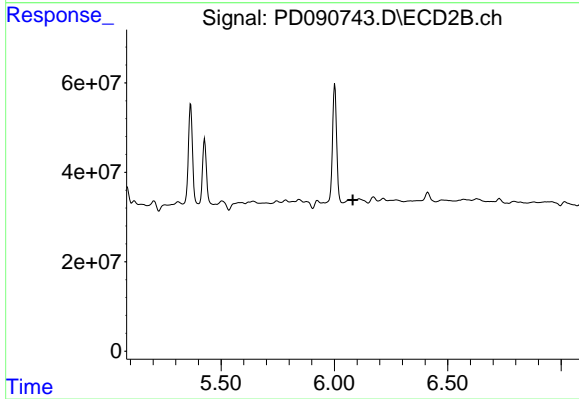
#26 Chlordane-4

R.T.: 5.204 min  
 Delta R.T.: 0.022 min  
 Response: 32166365  
 Conc: 9.63 ng/ml



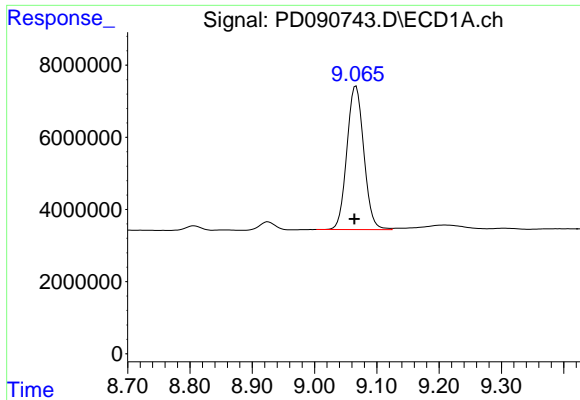
#27 Chlordane-5

R.T.: 6.874 min  
 Delta R.T.: 0.008 min  
 Response: 32763  
 Conc: 0.22 ng/ml



#27 Chlordane-5

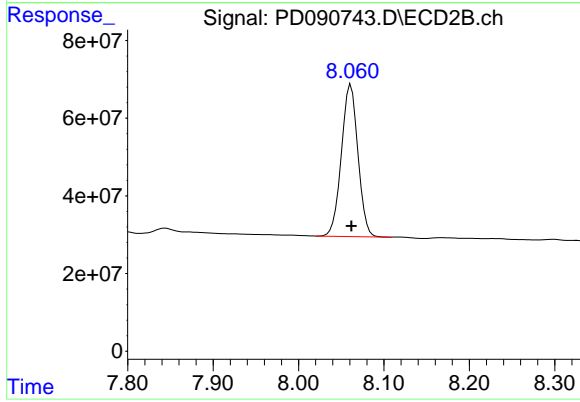
R.T.: 6.071 min  
 Delta R.T.: -0.010 min  
 Response: -86995364  
 Conc: N.D.



#28 Decachlorobiphenyl

R.T.: 9.066 min  
Delta R.T.: 0.002 min  
Response: 75577531  
Conc: 16.16 ng/ml

Instrument :  
ECD\_D  
ClientSampleId :  
PR132-S10-022047-20251017



#28 Decachlorobiphenyl

R.T.: 8.061 min  
Delta R.T.: 0.000 min  
Response: 527218732  
Conc: 17.40 ng/ml