

Data Path : Z:\pestpcbsrv\HPCHEM1\ECD_D\Data\PD102125\
 Data File : PD090744.D
 Signal(s) : Signal #1: ECD1A.ch Signal #2: ECD2B.ch
 Acq On : 21 Oct 2025 19:10
 Operator : AR\AJ
 Sample : I.BLK
 Misc :
 ALS Vial : 2 Sample Multiplier: 1

Instrument :
 ECD_D
 ClientSampleId :
 I.BLK

Integration File signal 1: autoint1.e
 Integration File signal 2: autoint2.e
 Quant Time: Oct 23 13:12:34 2025
 Quant Method : Z:\pestpcbsrv\HPCHEM1\ECD_D\Method\PD101725.M
 Quant Title : GC Extractables
 QLast Update : Fri Oct 17 17:43:28 2025
 Response via : Initial Calibration
 Integrator: ChemStation

Volume Inj. : 1 µl
 Signal #1 Phase : ZB-MR2 Signal #2 Phase: ZB-MR2
 Signal #1 Info : 30M x 0.32mm x0.5 Signal #2 Info : 30M x 0.32mm x 0.25µm

Compound	RT#1	RT#2	Resp#1	Resp#2	ng/ml	ng/ml

System Monitoring Compounds						
1) SA Tetrachlo...	3.545	2.874	62704890	618.9E6	20.135	20.784
28) SA Decachlor...	9.067	8.061	98081432	694.0E6	20.967	22.909
Target Compounds						
2) A alpha-BHC	0.000	3.379	0	3271415	N.D.	0.064 #
4) MA Heptachlor	4.913	4.074	1239470	371351	0.222	0.008 #
5) MB Aldrin	0.000	4.370	0	633642	N.D.	0.014 #
6) B beta-BHC	0.000	4.034f	0	2651311	N.D.	0.134 #
7) B delta-BHC	4.773	4.249	6291027	898899	0.930	0.019 #
8) B Heptachlo...	5.679	4.856	2008432	4011853	0.347	0.094 #
9) A Endosulfan I	0.000	5.218f	0	10068830	N.D.	0.256 #
10) B gamma-Chl...	5.936	5.121	450014	5553528	0.076	0.124 #
11) B alpha-Chl...	5.995f	5.193	6422351	15834281	1.039	0.367 #
12) B 4,4'-DDE	0.000	5.372	0	7188369	N.D.	0.164 #
13) MA Dieldrin	0.000	5.511	0	851579	N.D.	0.019 #
14) MA Endrin	0.000	5.788	0	107.6E6	N.D.	2.657 #
15) B Endosulfa...	6.770	6.079	2007854	1406898	0.402	0.037 #
16) A 4,4'-DDD	6.694	5.920	3000452	1108751	0.740	0.030 #
17) MA 4,4'-DDT	7.046f	6.174	1532617	2767660	0.373	0.079 #
18) B Endrin al...	6.922	6.253	2031514	1171054	0.555	0.042 #
19) B Endosulfa...	0.000	6.451f	0	2187895	N.D.	0.061 #
22) Mirex	8.108	7.175	1040702	19191983	0.325	0.747 #
23) Chlordane-1	0.000	3.898	0	833338	N.D.	0.669 #
24) Chlordane-2	0.000	4.450f	0	2655078	N.D.	2.035 #
25) Chlordane-3	5.936	5.121	450014	5553528	0.590	1.427 #
26) Chlordane-4	0.000	5.193	0	15834281	N.D.	4.739 #
27) Chlordane-5	0.000	6.079	0	1406898	N.D.	0.953 #

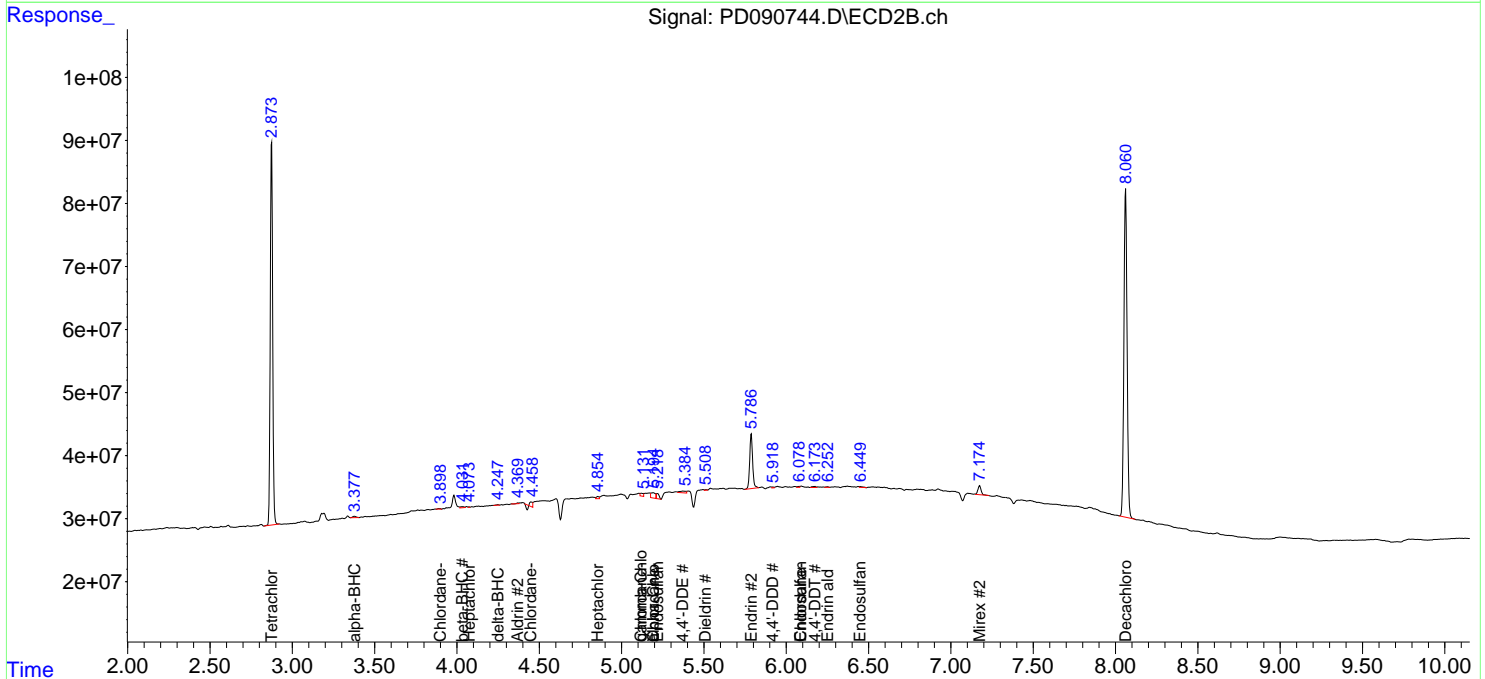
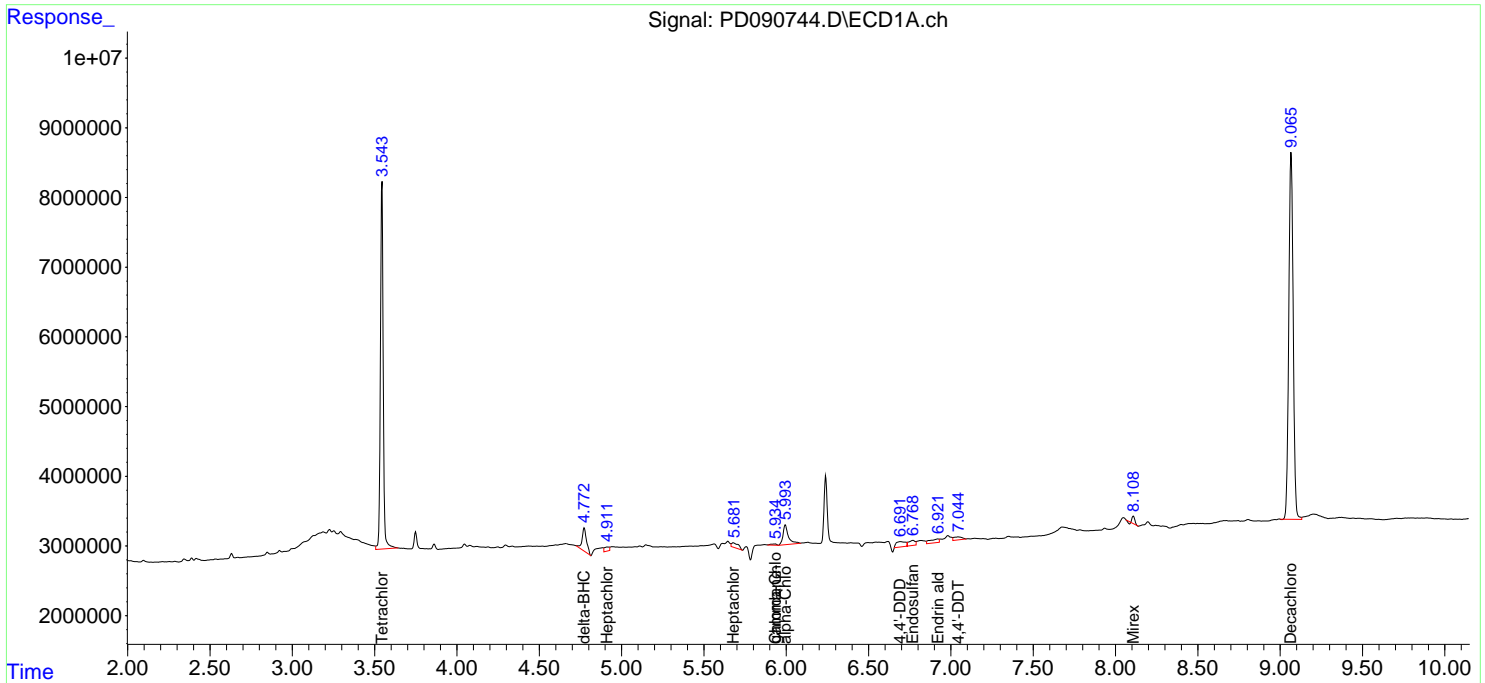
(f)=RT Delta > 1/2 Window (#)=Amounts differ by > 25% (m)=manual int.

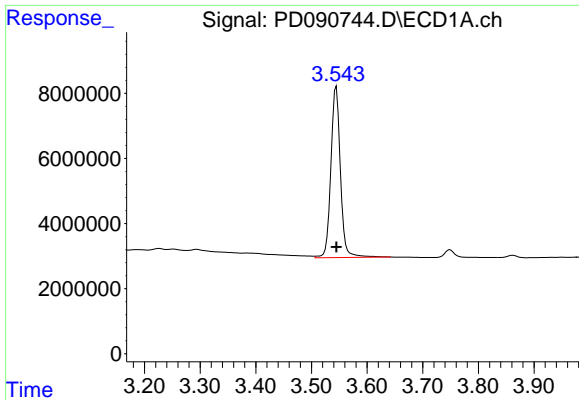
Data Path : Z:\pestpcbsrv\HPCHEM1\ECD_D\Data\PD102125\
 Data File : PD090744.D
 Signal(s) : Signal #1: ECD1A.ch Signal #2: ECD2B.ch
 Acq On : 21 Oct 2025 19:10
 Operator : AR\AJ
 Sample : I.BLK
 Misc :
 ALS Vial : 2 Sample Multiplier: 1

Instrument :
 ECD_D
 ClientSampleId :
 I.BLK

Integration File signal 1: autoint1.e
 Integration File signal 2: autoint2.e
 Quant Time: Oct 23 13:12:34 2025
 Quant Method : Z:\pestpcbsrv\HPCHEM1\ECD_D\Method\PD101725.M
 Quant Title : GC Extractables
 QLast Update : Fri Oct 17 17:43:28 2025
 Response via : Initial Calibration
 Integrator: ChemStation

Volume Inj. : 1 µl
 Signal #1 Phase : ZB-MR1 Signal #2 Phase: ZB-MR2
 Signal #1 Info : 30M x 0.32mm x0.5 Signal #2 Info : 30M x 0.32mm x 0.25µm

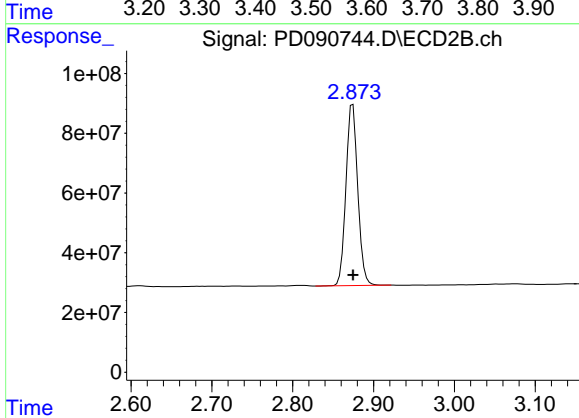




#1 Tetrachloro-m-xylene

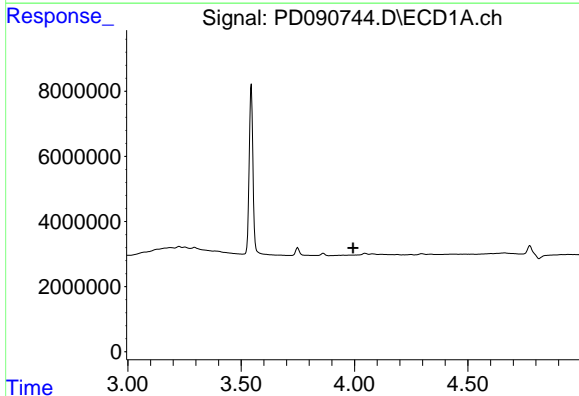
R.T.: 3.545 min
 Delta R.T.: 0.000 min
 Response: 62704890
 Conc: 20.14 ng/ml

Instrument :
 ECD_D
 ClientSampleId :
 I.BLK



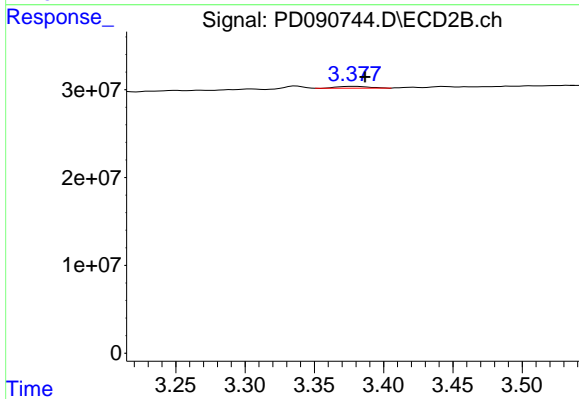
#1 Tetrachloro-m-xylene

R.T.: 2.874 min
 Delta R.T.: 0.000 min
 Response: 618892202
 Conc: 20.78 ng/ml



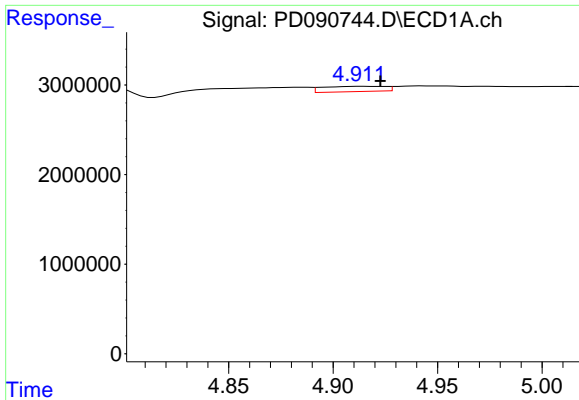
#2 alpha-BHC

R.T.: 0.000 min
 Exp R.T. : 3.994 min
 Response: 0
 Conc: N.D.



#2 alpha-BHC

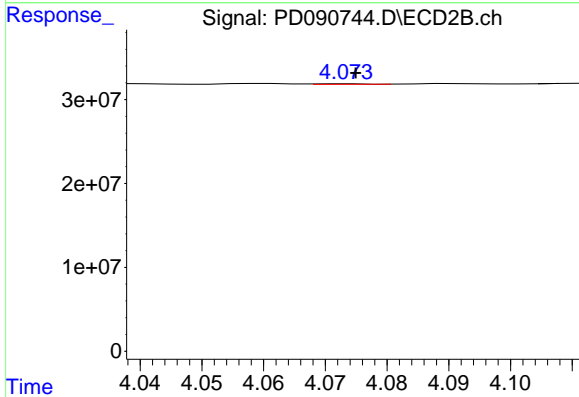
R.T.: 3.379 min
 Delta R.T.: -0.008 min
 Response: 3271415
 Conc: 0.06 ng/ml



#4 Heptachlor

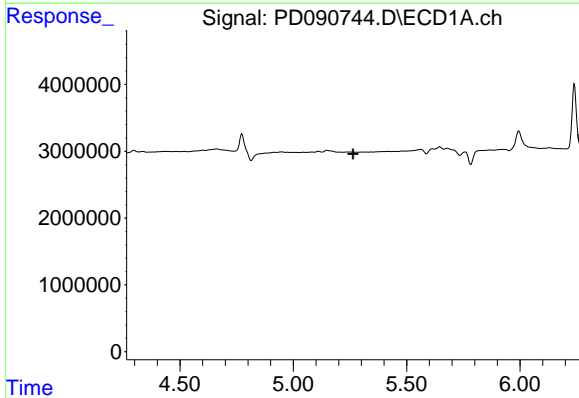
R.T.: 4.913 min
 Delta R.T.: -0.010 min
 Response: 1239470
 Conc: 0.22 ng/ml

Instrument :
 ECD_D
 ClientSampleId :
 I.BLK



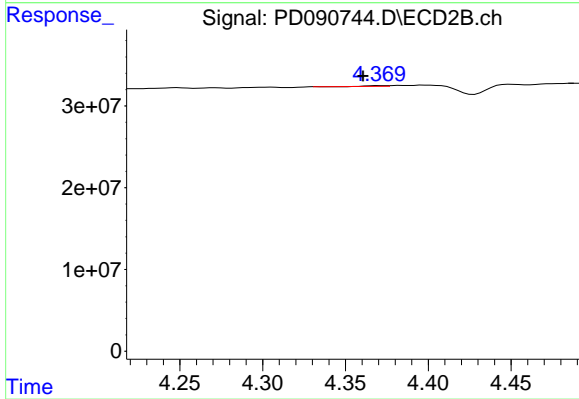
#4 Heptachlor

R.T.: 4.074 min
 Delta R.T.: -0.001 min
 Response: 371351
 Conc: 0.01 ng/ml



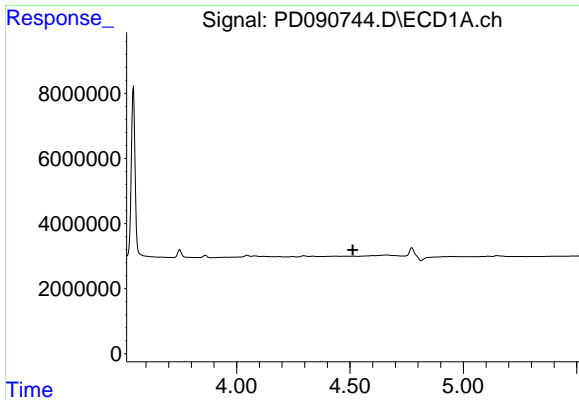
#5 Aldrin

R.T.: 0.000 min
 Exp R.T. : 5.264 min
 Response: 0
 Conc: N.D.



#5 Aldrin

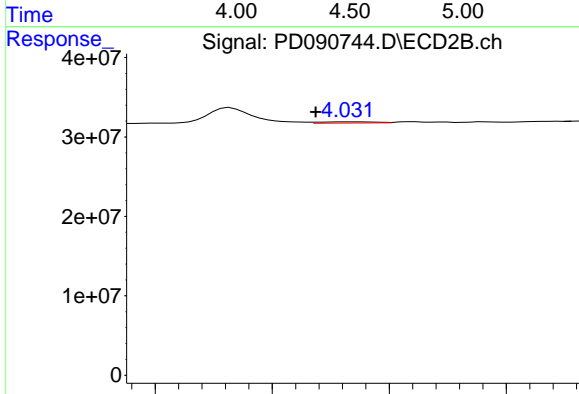
R.T.: 4.370 min
 Delta R.T.: 0.010 min
 Response: 633642
 Conc: 0.01 ng/ml



#6 beta-BHC

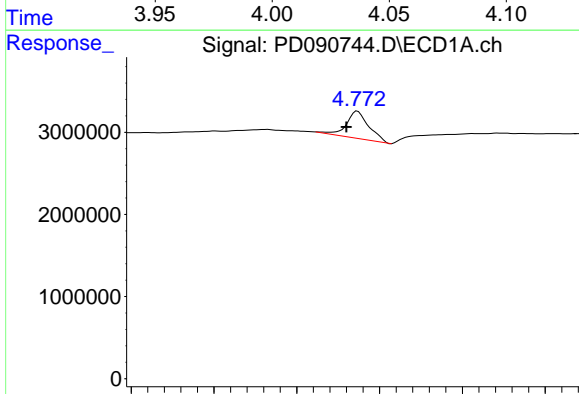
R.T.: 0.000 min
 Exp R.T.: 4.512 min
 Response: 0
 Conc: N.D.

Instrument :
 ECD_D
 ClientSampleId :
 I.BLK



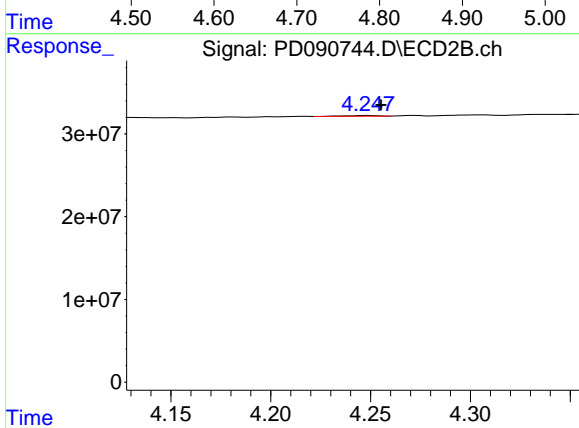
#6 beta-BHC

R.T.: 4.034 min
 Delta R.T.: 0.015 min
 Response: 2651311
 Conc: 0.13 ng/ml



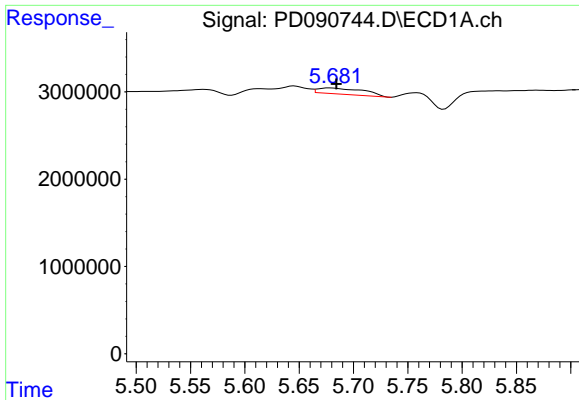
#7 delta-BHC

R.T.: 4.773 min
 Delta R.T.: 0.013 min
 Response: 6291027
 Conc: 0.93 ng/ml



#7 delta-BHC

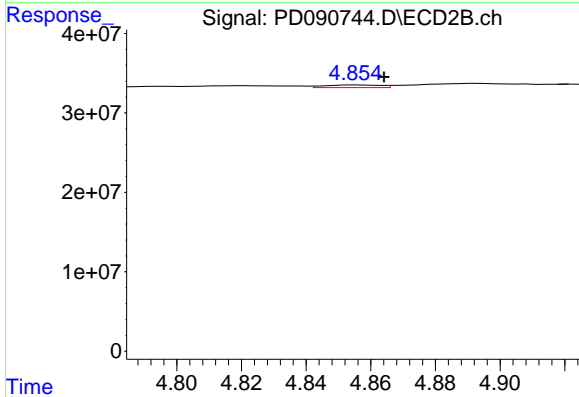
R.T.: 4.249 min
 Delta R.T.: -0.006 min
 Response: 898899
 Conc: 0.02 ng/ml



#8 Heptachlor epoxide

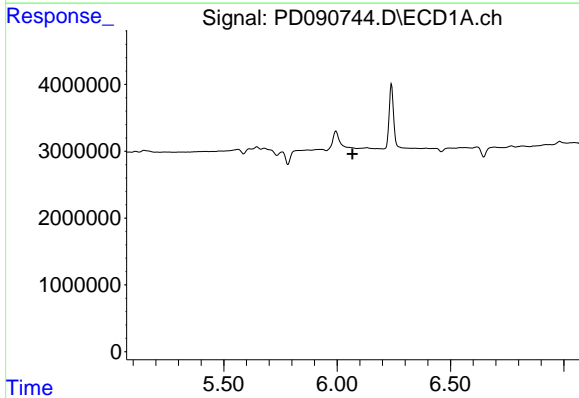
R.T.: 5.679 min
 Delta R.T.: -0.006 min
 Response: 2008432
 Conc: 0.35 ng/ml

Instrument :
 ECD_D
 ClientSampleId :
 I.BLK



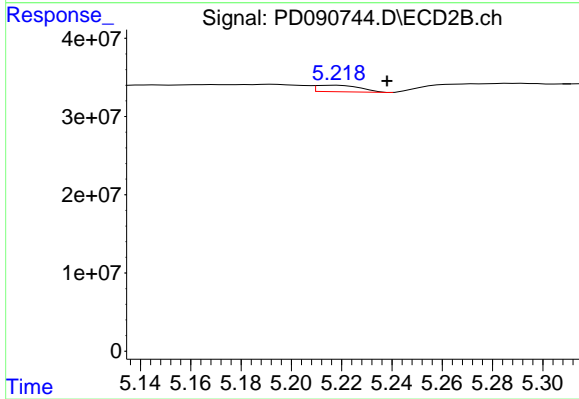
#8 Heptachlor epoxide

R.T.: 4.856 min
 Delta R.T.: -0.008 min
 Response: 4011853
 Conc: 0.09 ng/ml



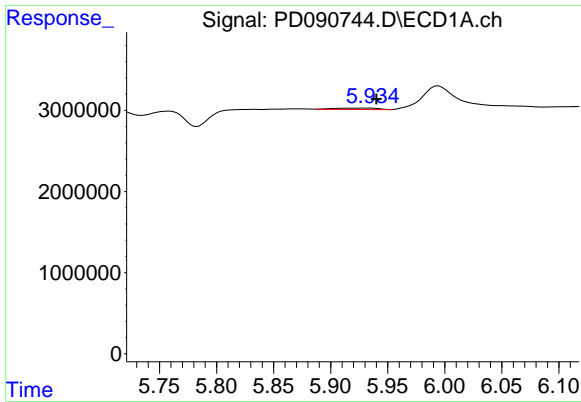
#9 Endosulfan I

R.T.: 0.000 min
 Exp R.T. : 6.068 min
 Response: 0
 Conc: N.D.



#9 Endosulfan I

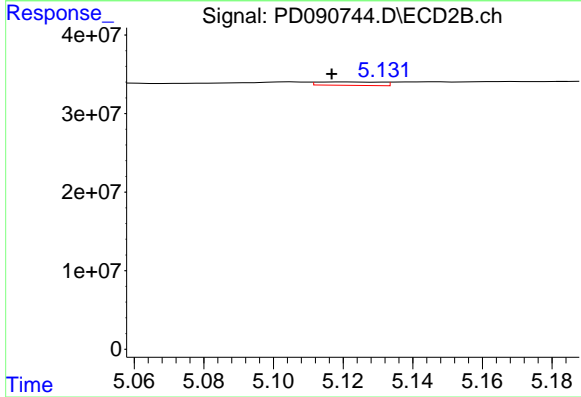
R.T.: 5.218 min
 Delta R.T.: -0.020 min
 Response: 10068830
 Conc: 0.26 ng/ml



#10 gamma-Chlordane

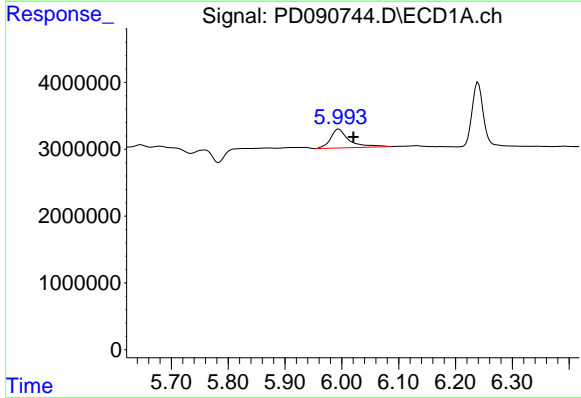
R.T.: 5.936 min
 Delta R.T.: -0.004 min
 Response: 450014
 Conc: 0.08 ng/ml

Instrument :
 ECD_D
 ClientSampleId :
 I.BLK



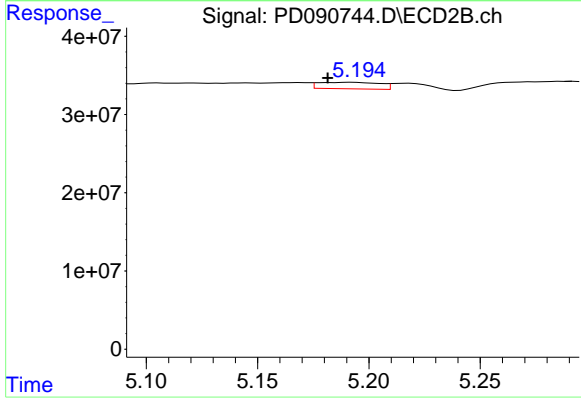
#10 gamma-Chlordane

R.T.: 5.121 min
 Delta R.T.: 0.004 min
 Response: 5553528
 Conc: 0.12 ng/ml



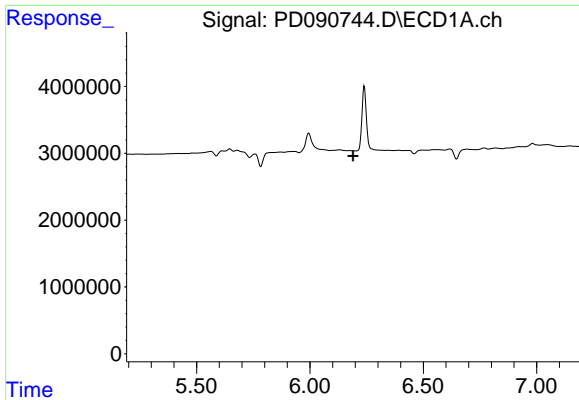
#11 alpha-Chlordane

R.T.: 5.995 min
 Delta R.T.: -0.026 min
 Response: 6422351
 Conc: 1.04 ng/ml



#11 alpha-Chlordane

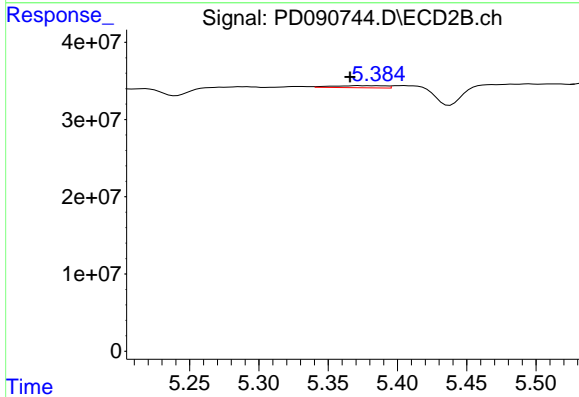
R.T.: 5.193 min
 Delta R.T.: 0.011 min
 Response: 15834281
 Conc: 0.37 ng/ml



#12 4,4'-DDE

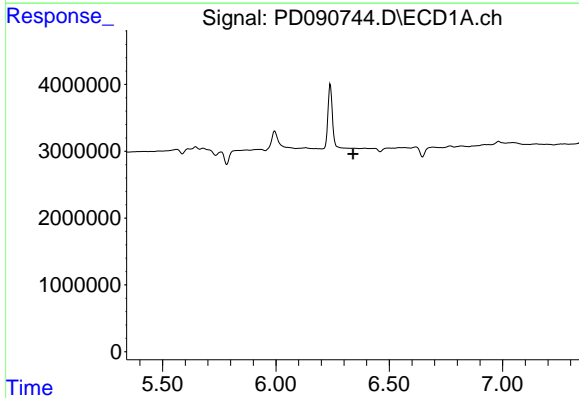
R.T.: 0.000 min
 Exp R.T.: 6.190 min
 Response: 0
 Conc: N.D.

Instrument :
 ECD_D
 ClientSampleId :
 I.BLK



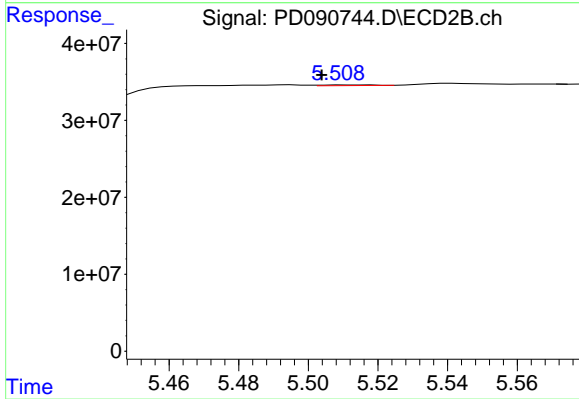
#12 4,4'-DDE

R.T.: 5.372 min
 Delta R.T.: 0.006 min
 Response: 7188369
 Conc: 0.16 ng/ml



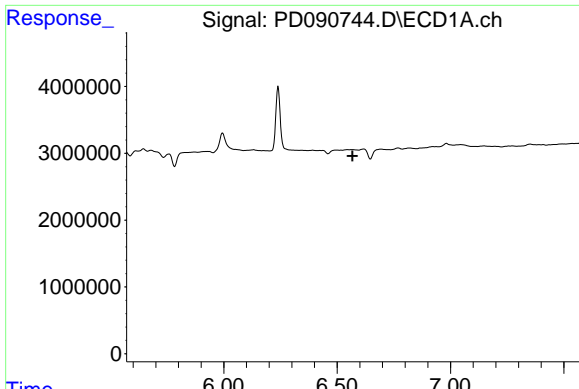
#13 Dieldrin

R.T.: 0.000 min
 Exp R.T.: 6.340 min
 Response: 0
 Conc: N.D.



#13 Dieldrin

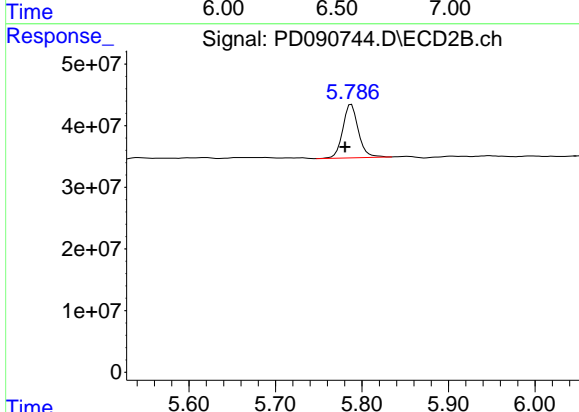
R.T.: 5.511 min
 Delta R.T.: 0.007 min
 Response: 851579
 Conc: 0.02 ng/ml



#14 Endrin

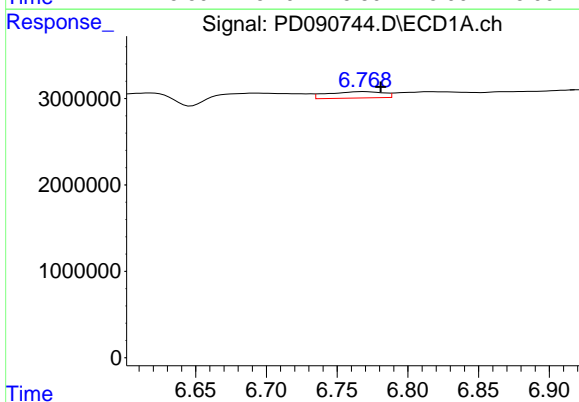
R.T.: 0.000 min
 Exp R.T.: 6.568 min
 Response: 0
 Conc: N.D.

Instrument :
 ECD_D
 ClientSampleId :
 I.BLK



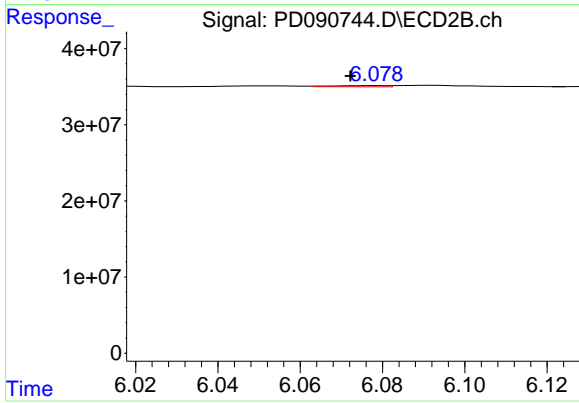
#14 Endrin

R.T.: 5.788 min
 Delta R.T.: 0.007 min
 Response: 107594280
 Conc: 2.66 ng/ml



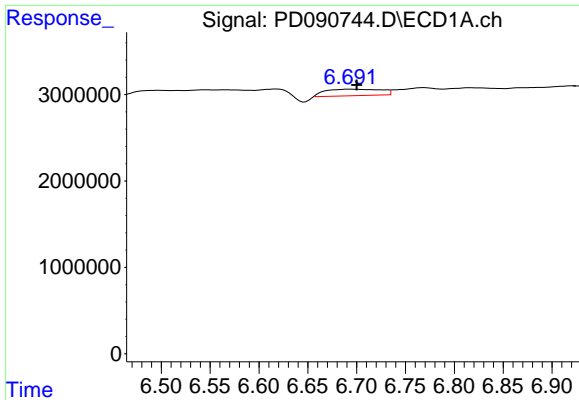
#15 Endosulfan II

R.T.: 6.770 min
 Delta R.T.: -0.011 min
 Response: 2007854
 Conc: 0.40 ng/ml



#15 Endosulfan II

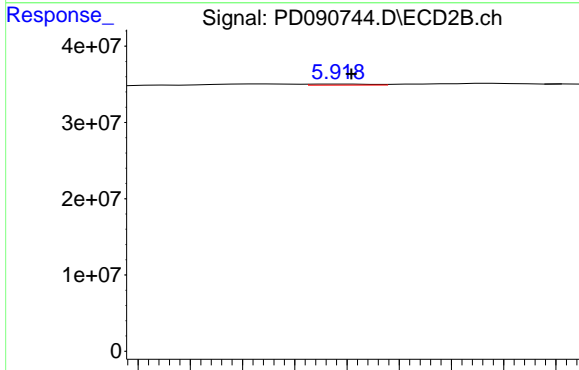
R.T.: 6.079 min
 Delta R.T.: 0.007 min
 Response: 1406898
 Conc: 0.04 ng/ml



#16 4,4'-DDD

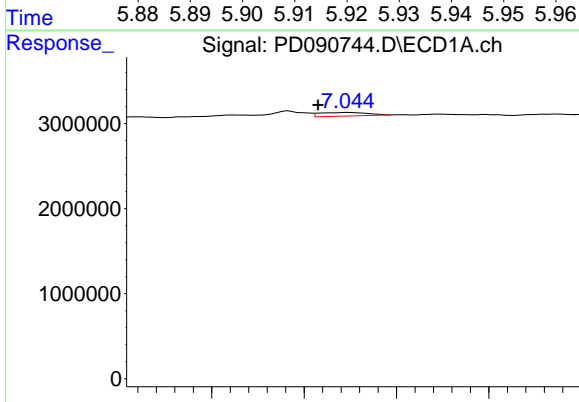
R.T.: 6.694 min
 Delta R.T.: -0.006 min
 Response: 3000452
 Conc: 0.74 ng/ml

Instrument :
 ECD_D
 ClientSampleId :
 I.BLK



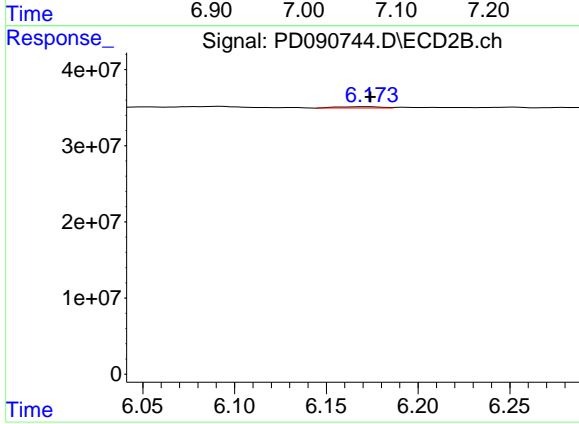
#16 4,4'-DDD

R.T.: 5.920 min
 Delta R.T.: -0.001 min
 Response: 1108751
 Conc: 0.03 ng/ml



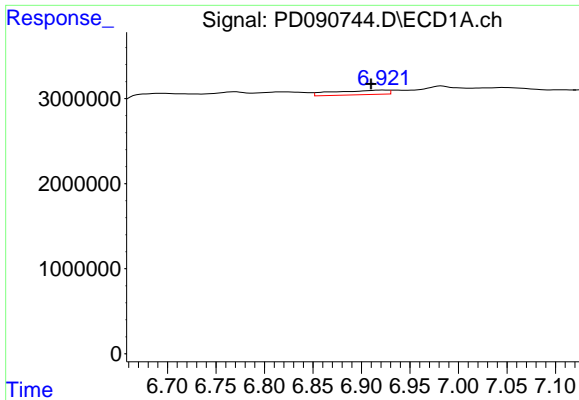
#17 4,4'-DDT

R.T.: 7.046 min
 Delta R.T.: 0.031 min
 Response: 1532617
 Conc: 0.37 ng/ml



#17 4,4'-DDT

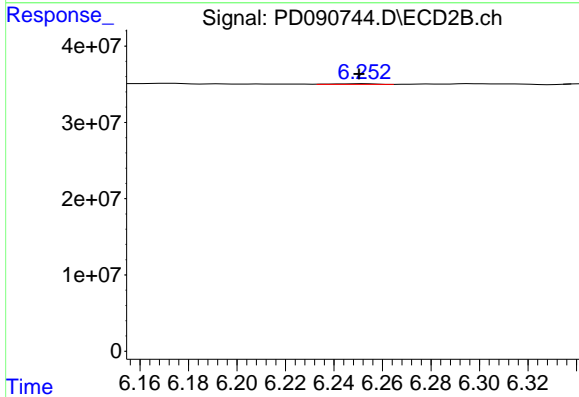
R.T.: 6.174 min
 Delta R.T.: 0.000 min
 Response: 2767660
 Conc: 0.08 ng/ml



#18 Endrin aldehyde

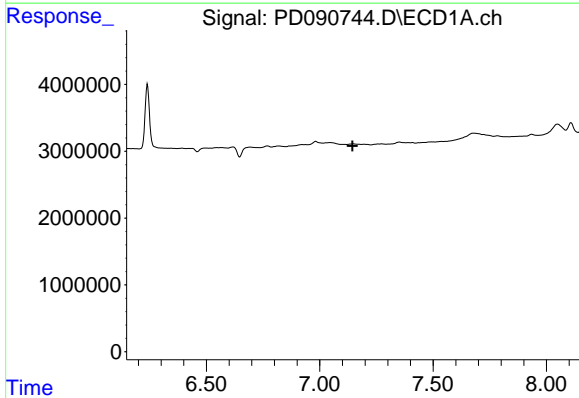
R.T.: 6.922 min
 Delta R.T.: 0.012 min
 Response: 2031514
 Conc: 0.55 ng/ml

Instrument :
 ECD_D
 ClientSampleId :
 I.BLK



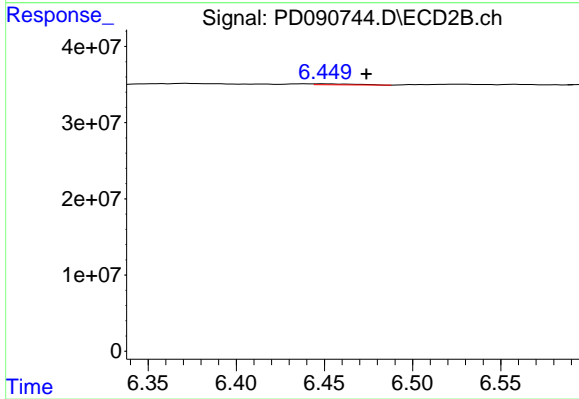
#18 Endrin aldehyde

R.T.: 6.253 min
 Delta R.T.: 0.003 min
 Response: 1171054
 Conc: 0.04 ng/ml



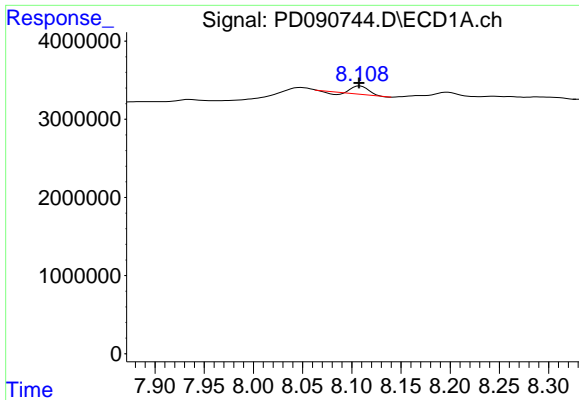
#19 Endosulfan Sulfate

R.T.: 0.000 min
 Exp R.T. : 7.145 min
 Response: 0
 Conc: N.D.



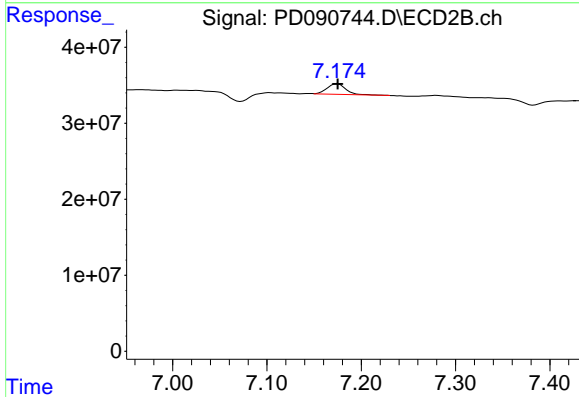
#19 Endosulfan Sulfate

R.T.: 6.451 min
 Delta R.T.: -0.023 min
 Response: 2187895
 Conc: 0.06 ng/ml

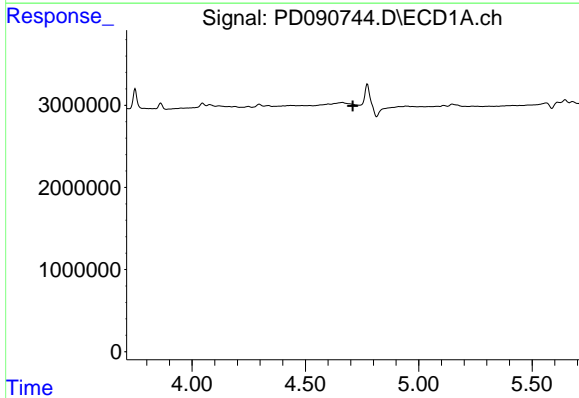


#22 Mirex
 R.T.: 8.108 min
 Delta R.T.: 0.001 min
 Response: 1040702
 Conc: 0.33 ng/ml

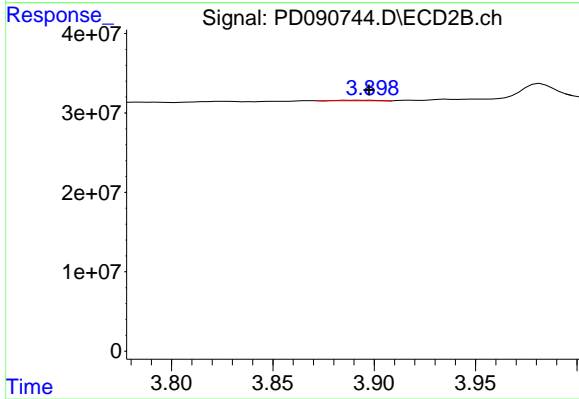
Instrument :
 ECD_D
 ClientSampleId :
 I.BLK



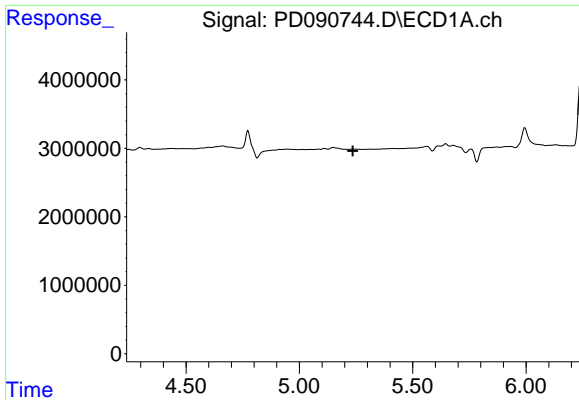
#22 Mirex
 R.T.: 7.175 min
 Delta R.T.: 0.000 min
 Response: 19191983
 Conc: 0.75 ng/ml



#23 Chlordane-1
 R.T.: 0.000 min
 Exp R.T. : 4.709 min
 Response: 0
 Conc: N.D.



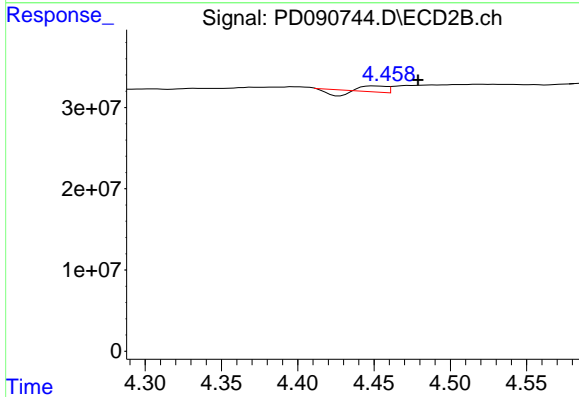
#23 Chlordane-1
 R.T.: 3.898 min
 Delta R.T.: 0.000 min
 Response: 833338
 Conc: 0.67 ng/ml



#24 Chlordane-2

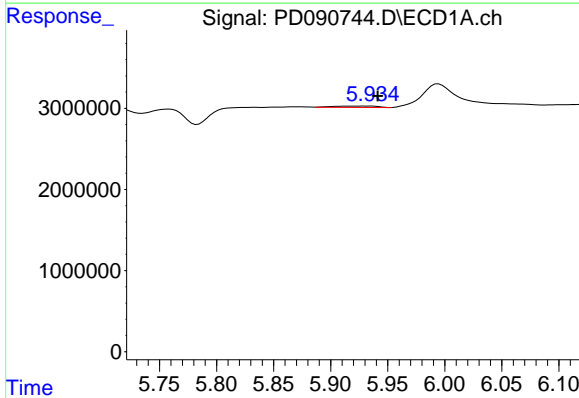
R.T.: 0.000 min
 Exp R.T.: 5.236 min
 Response: 0
 Conc: N.D.

Instrument :
 ECD_D
 ClientSampleId :
 I.BLK



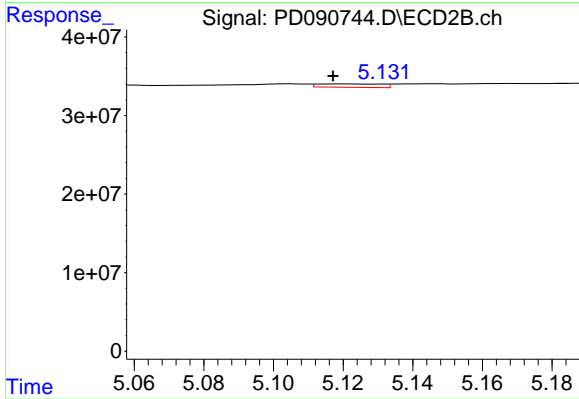
#24 Chlordane-2

R.T.: 4.450 min
 Delta R.T.: -0.029 min
 Response: 2655078
 Conc: 2.04 ng/ml



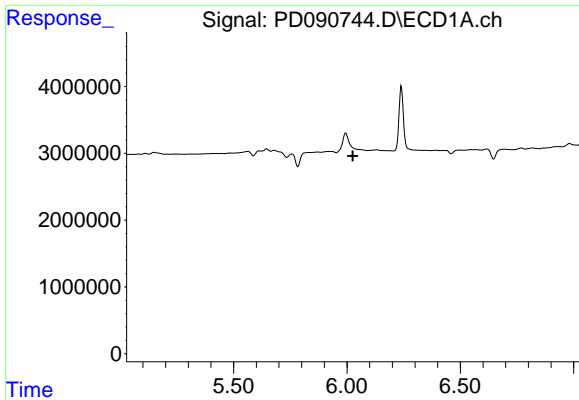
#25 Chlordane-3

R.T.: 5.936 min
 Delta R.T.: -0.005 min
 Response: 450014
 Conc: 0.59 ng/ml



#25 Chlordane-3

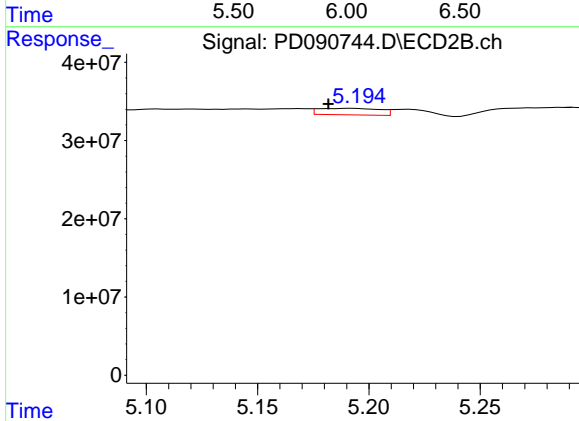
R.T.: 5.121 min
 Delta R.T.: 0.003 min
 Response: 5553528
 Conc: 1.43 ng/ml



#26 Chlordane-4

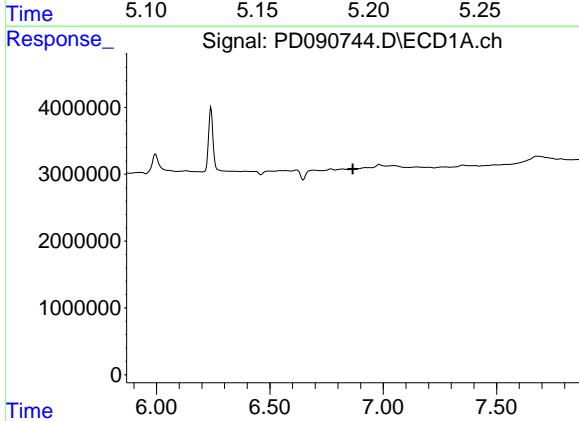
R.T.: 0.000 min
 Exp R.T.: 6.025 min
 Response: 0
 Conc: N.D.

Instrument :
 ECD_D
 ClientSampleId :
 I.BLK



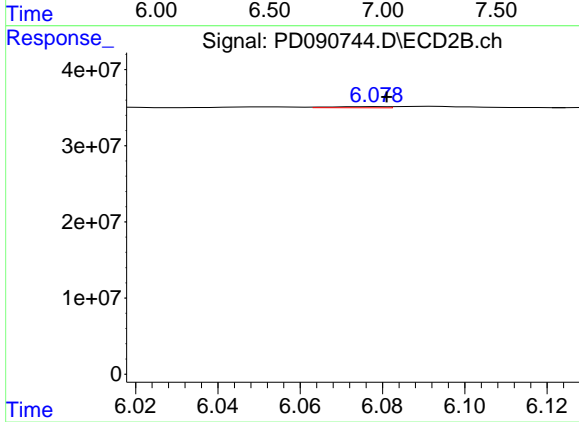
#26 Chlordane-4

R.T.: 5.193 min
 Delta R.T.: 0.011 min
 Response: 15834281
 Conc: 4.74 ng/ml



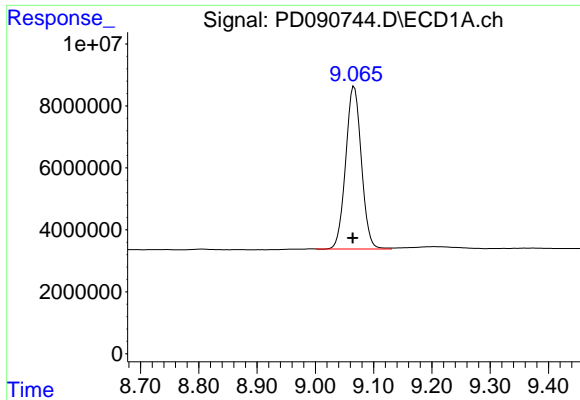
#27 Chlordane-5

R.T.: 0.000 min
 Exp R.T.: 6.866 min
 Response: 0
 Conc: N.D.



#27 Chlordane-5

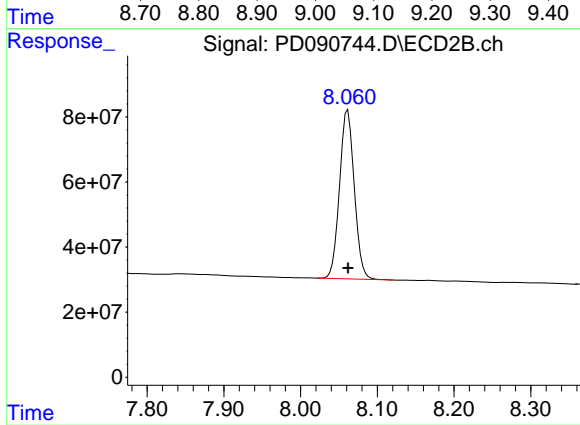
R.T.: 6.079 min
 Delta R.T.: -0.002 min
 Response: 1406898
 Conc: 0.95 ng/ml



#28 Decachlorobiphenyl

R.T.: 9.067 min
Delta R.T.: 0.002 min
Response: 98081432
Conc: 20.97 ng/ml

Instrument :
ECD_D
ClientSampleId :
I.BLK



#28 Decachlorobiphenyl

R.T.: 8.061 min
Delta R.T.: 0.000 min
Response: 693957607
Conc: 22.91 ng/ml