

Data Path : Z:\pestpcbsrv\HPCHEM1\ECD_D\Data\PD102125\
 Data File : PD090745.D
 Signal(s) : Signal #1: ECD1A.ch Signal #2: ECD2B.ch
 Acq On : 21 Oct 2025 19:24
 Operator : AR\AJ
 Sample : PEM
 Misc :
 ALS Vial : 3 Sample Multiplier: 1

Instrument :
 ECD_D
 ClientSampleId :
 PEM

Integration File signal 1: autoint1.e
 Integration File signal 2: autoint2.e
 Quant Time: Oct 23 13:12:44 2025
 Quant Method : Z:\pestpcbsrv\HPCHEM1\ECD_D\Method\PD101725.M
 Quant Title : GC Extractables
 QLast Update : Fri Oct 17 17:43:28 2025
 Response via : Initial Calibration
 Integrator: ChemStation

Volume Inj. : 1 µl
 Signal #1 Phase : ZB-MR2 Signal #2 Phase: ZB-MR2
 Signal #1 Info : 30M x 0.32mm x0.5 Signal #2 Info : 30M x 0.32mm x 0.25µm

	Compound	RT#1	RT#2	Resp#1	Resp#2	ng/ml	ng/ml

System Monitoring Compounds							
1)	SA Tetrachlo...	3.544	2.874	70637002	685.4E6	22.682	23.019
28)	SA Decachlor...	9.067	8.062	108.5E6	774.6E6	23.189	25.570
Target Compounds							
2)	A alpha-BHC	3.993	3.386	68984293	577.4E6	9.612	11.300
3)	MA gamma-BHC...	4.324	3.722	68071537	534.9E6	10.012	11.320
4)	MA Heptachlor	4.900f	4.068	179675	1317650	0.032	0.030
5)	MB Aldrin	0.000	4.358	0	8556527	N.D.	0.185 #
6)	B beta-BHC	4.512	4.019	28837446	221.0E6	11.008	11.146
7)	B delta-BHC	4.771	4.258	1895009	1071173	0.280	0.022 #
8)	B Heptachlo...	5.676	4.865	4069587	6153348	0.703	0.144 #
10)	B gamma-Chl...	5.911f	5.117	1199581	50302897	0.202	1.119 #
11)	B alpha-Chl...	5.998f	5.184	16191117	104.8E6	2.620	2.428
12)	B 4,4'-DDE	6.189	5.368	300317	42697959	0.056	0.974 #
13)	MA Dieldrin	6.364f	5.502	766821	8099431	0.131	0.183 #
14)	MA Endrin	6.569	5.780	271.3E6	2239.7E6	54.768	55.310
15)	B Endosulfa...	6.802f	6.079	13996104	11593607	2.799	0.309 #
16)	A 4,4'-DDD	6.701	5.921	28167815	86125893	6.948	2.364 #
17)	MA 4,4'-DDT	7.016	6.174	453.4E6	3867.0E6	110.307	110.256
18)	B Endrin al...	6.912	6.247	7624709	21217930	2.082	0.766 #
19)	B Endosulfa...	0.000	6.455f	0	5336210	N.D.	0.149 #
20)	A Methoxychlor	7.490	6.745	541.4E6	4019.1E6	254.713	230.616
21)	B Endrin ke...	7.626	6.982	5854152	49591571	1.205	1.315
22)	Mirex	0.000	7.167	0	10063862	N.D.	0.392 #
23)	Chlordane-1	0.000	3.887	0	1153933	N.D.	0.926 #
24)	Chlordane-2	0.000	4.489	0	87399847	N.D.	66.998 #
25)	Chlordane-3	0.000	5.117	0	50302897	N.D.	12.926 #
26)	Chlordane-4	5.998f	5.184	16191117	104.8E6	16.711	31.351 #
27)	Chlordane-5	6.866	6.079	6389205	11593607	42.521	7.855 #

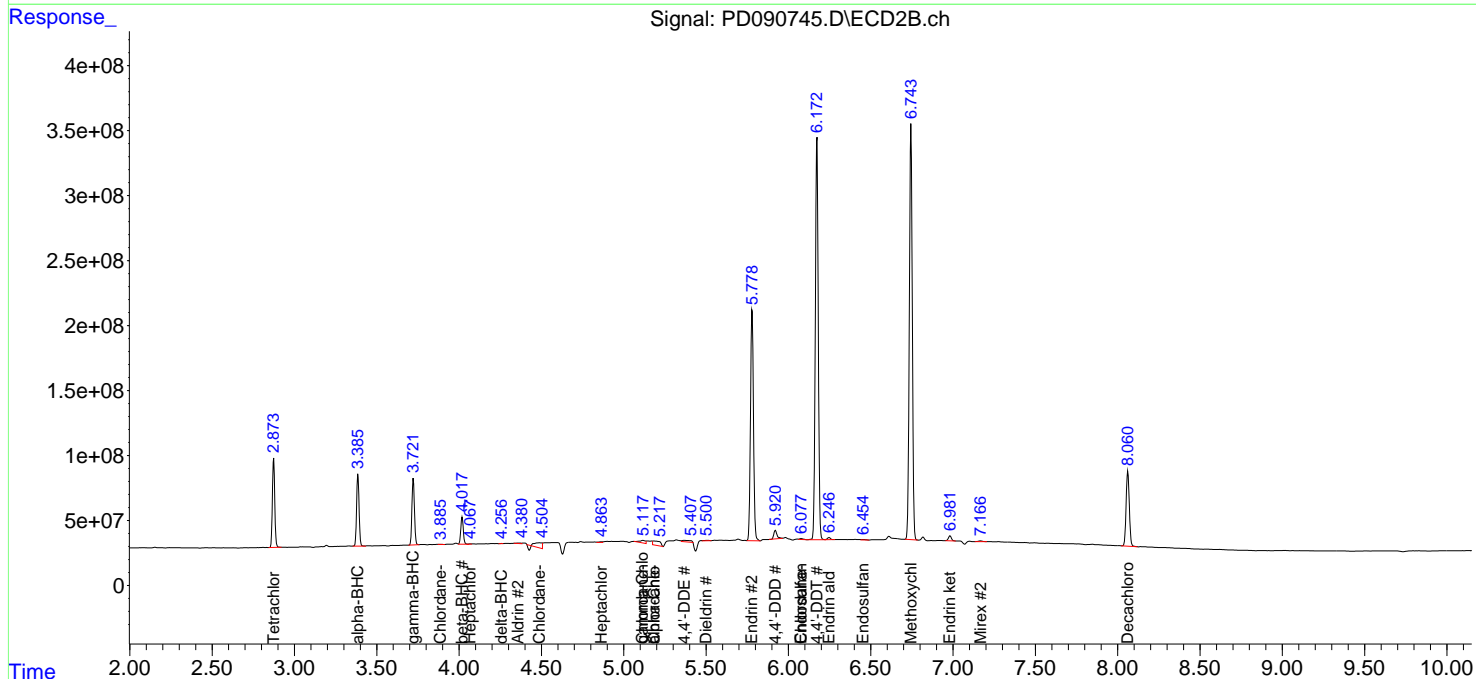
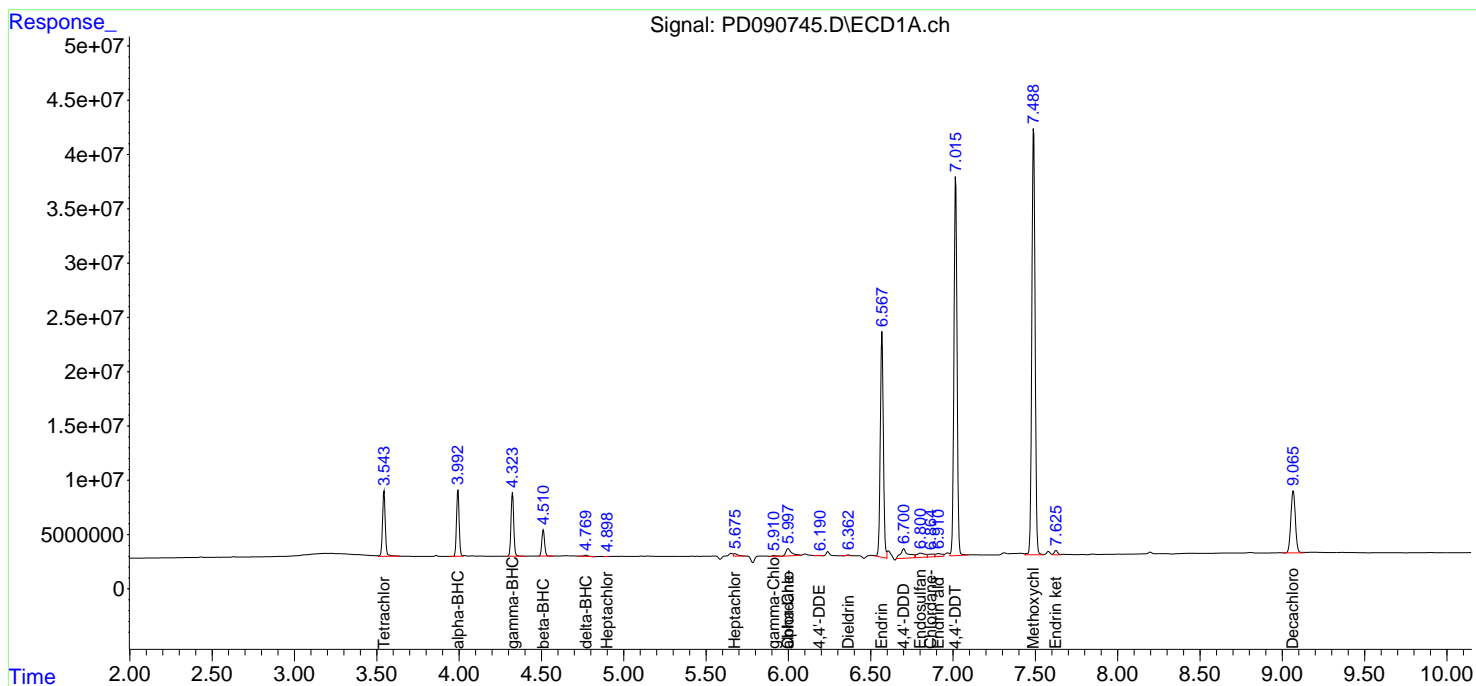
(f)=RT Delta > 1/2 Window (#)=Amounts differ by > 25% (m)=manual int.

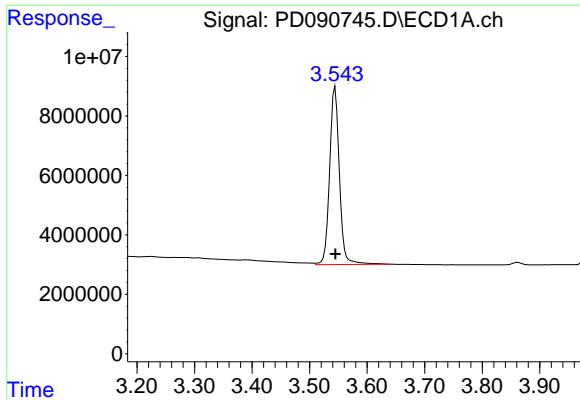
Data Path : Z:\pestpcbsrv\HPCHEM1\ECD_D\Data\PD102125\
 Data File : PD090745.D
 Signal(s) : Signal #1: ECD1A.ch Signal #2: ECD2B.ch
 Acq On : 21 Oct 2025 19:24
 Operator : AR\AJ
 Sample : PEM
 Misc :
 ALS Vial : 3 Sample Multiplier: 1

Instrument :
 ECD_D
 ClientSampleId :
 PEM

Integration File signal 1: autoint1.e
 Integration File signal 2: autoint2.e
 Quant Time: Oct 23 13:12:44 2025
 Quant Method : Z:\pestpcbsrv\HPCHEM1\ECD_D\Method\PD101725.M
 Quant Title : GC Extractables
 QLast Update : Fri Oct 17 17:43:28 2025
 Response via : Initial Calibration
 Integrator: ChemStation

Volume Inj. : 1 µl
 Signal #1 Phase : ZB-MR1 Signal #2 Phase: ZB-MR2
 Signal #1 Info : 30M x 0.32mm x0.5 Signal #2 Info : 30M x 0.32mm x 0.25µm

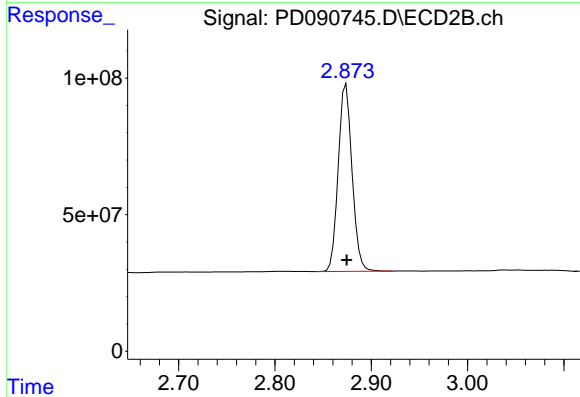




#1 Tetrachloro-m-xylene

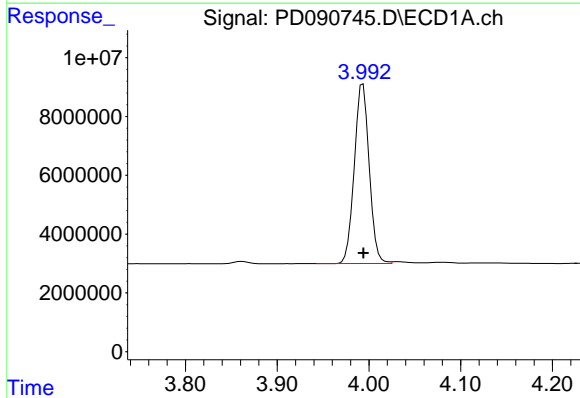
R.T.: 3.544 min
 Delta R.T.: 0.000 min
 Response: 70637002
 Conc: 22.68 ng/ml

Instrument :
 ECD_D
 ClientSampleId :
 PEM



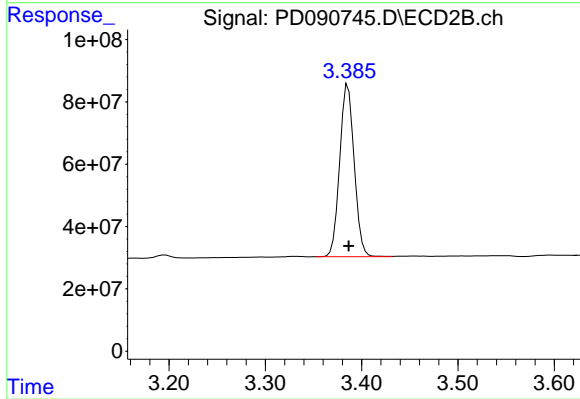
#1 Tetrachloro-m-xylene

R.T.: 2.874 min
 Delta R.T.: 0.000 min
 Response: 685435544
 Conc: 23.02 ng/ml



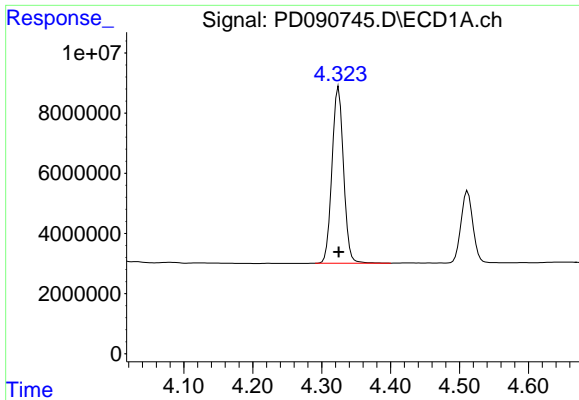
#2 alpha-BHC

R.T.: 3.993 min
 Delta R.T.: 0.000 min
 Response: 68984293
 Conc: 9.61 ng/ml



#2 alpha-BHC

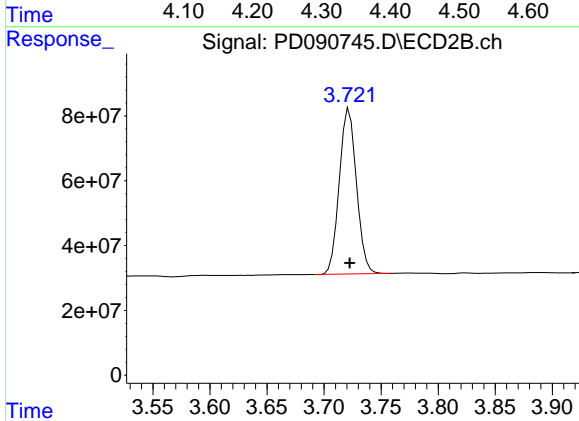
R.T.: 3.386 min
 Delta R.T.: 0.000 min
 Response: 577380786
 Conc: 11.30 ng/ml



#3 gamma-BHC (Lindane)

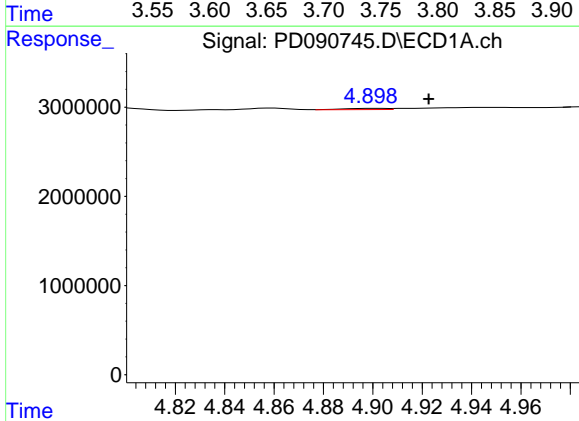
R.T.: 4.324 min
 Delta R.T.: 0.000 min
 Response: 68071537
 Conc: 10.01 ng/ml

Instrument :
 ECD_D
 ClientSampleId :
 PEM



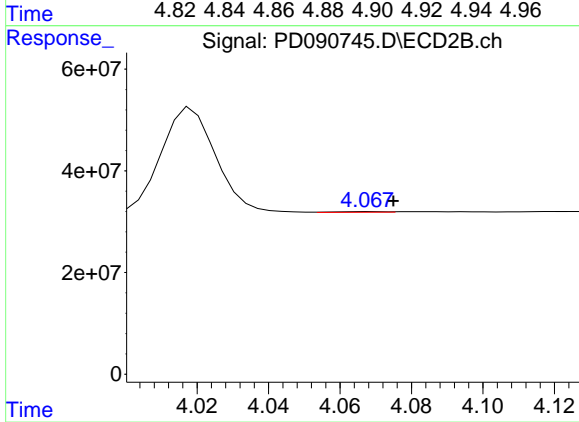
#3 gamma-BHC (Lindane)

R.T.: 3.722 min
 Delta R.T.: 0.000 min
 Response: 534873309
 Conc: 11.32 ng/ml



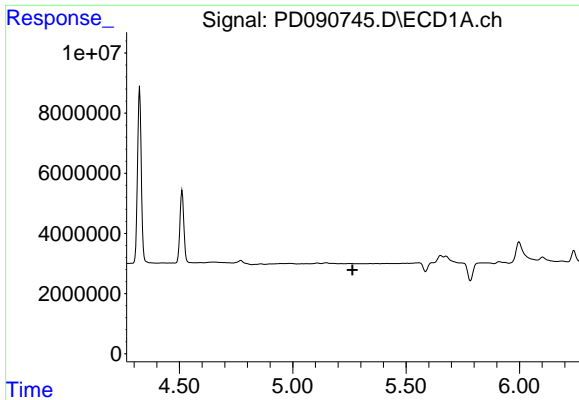
#4 Heptachlor

R.T.: 4.900 min
 Delta R.T.: -0.022 min
 Response: 179675
 Conc: 0.03 ng/ml



#4 Heptachlor

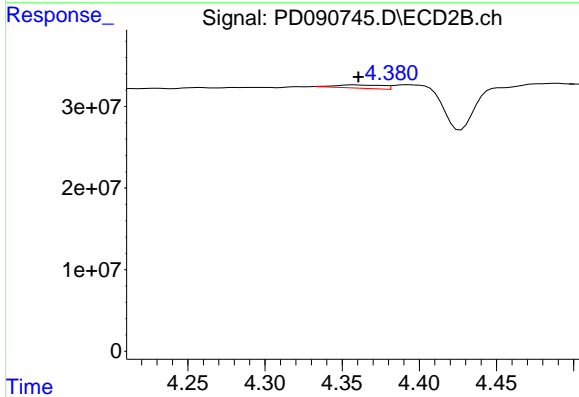
R.T.: 4.068 min
 Delta R.T.: -0.007 min
 Response: 1317650
 Conc: 0.03 ng/ml



#5 Aldrin

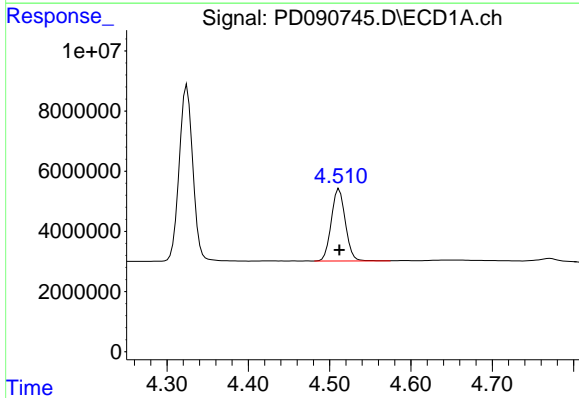
R.T.: 0.000 min
 Exp R.T.: 5.264 min
 Response: 0
 Conc: N.D.

Instrument :
 ECD_D
 ClientSampleId :
 PEM



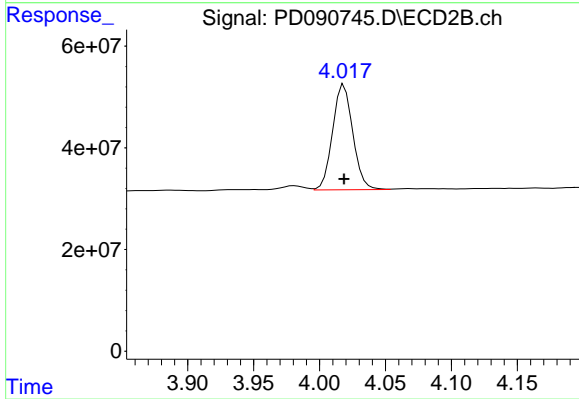
#5 Aldrin

R.T.: 4.358 min
 Delta R.T.: -0.003 min
 Response: 8556527
 Conc: 0.18 ng/ml



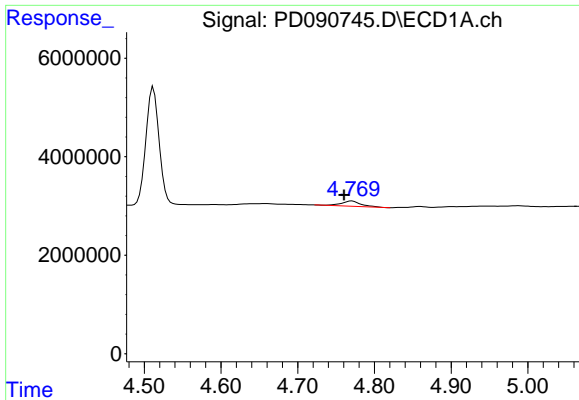
#6 beta-BHC

R.T.: 4.512 min
 Delta R.T.: 0.000 min
 Response: 28837446
 Conc: 11.01 ng/ml



#6 beta-BHC

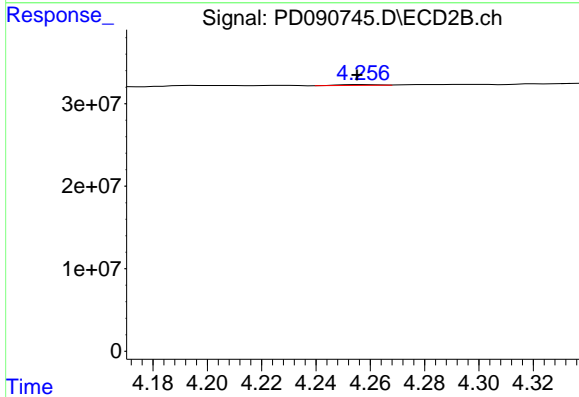
R.T.: 4.019 min
 Delta R.T.: 0.000 min
 Response: 221023049
 Conc: 11.15 ng/ml



#7 delta-BHC

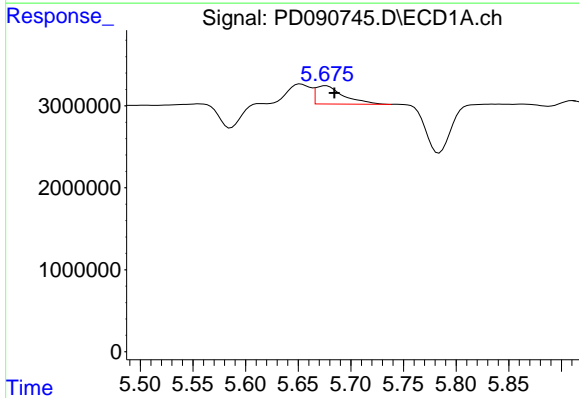
R.T.: 4.771 min
 Delta R.T.: 0.010 min
 Response: 1895009
 Conc: 0.28 ng/ml

Instrument :
 ECD_D
 ClientSampleId :
 PEM



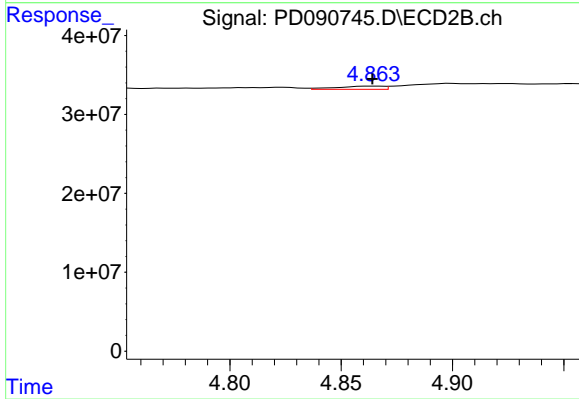
#7 delta-BHC

R.T.: 4.258 min
 Delta R.T.: 0.002 min
 Response: 1071173
 Conc: 0.02 ng/ml



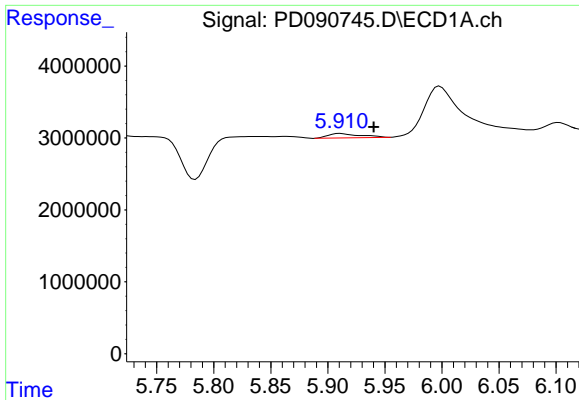
#8 Heptachlor epoxide

R.T.: 5.676 min
 Delta R.T.: -0.008 min
 Response: 4069587
 Conc: 0.70 ng/ml



#8 Heptachlor epoxide

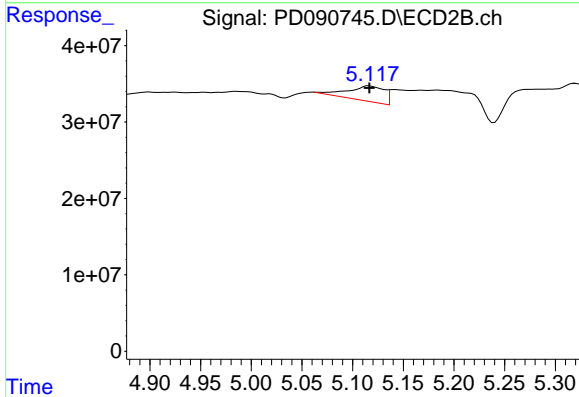
R.T.: 4.865 min
 Delta R.T.: 0.000 min
 Response: 6153348
 Conc: 0.14 ng/ml



#10 gamma-Chlordane

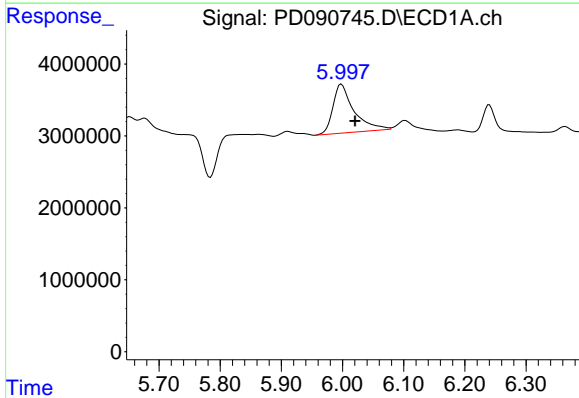
R.T.: 5.911 min
 Delta R.T.: -0.029 min
 Response: 1199581
 Conc: 0.20 ng/ml

Instrument :
 ECD_D
 ClientSampleId :
 PEM



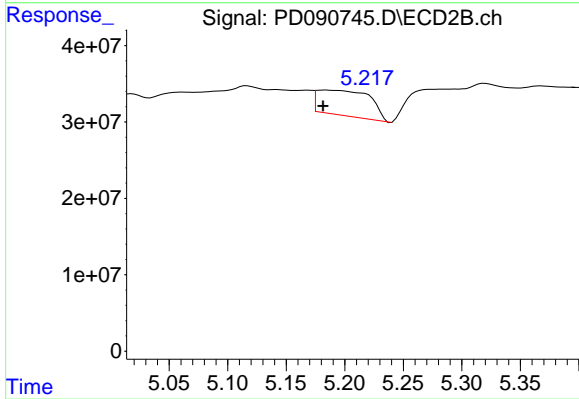
#10 gamma-Chlordane

R.T.: 5.117 min
 Delta R.T.: 0.000 min
 Response: 50302897
 Conc: 1.12 ng/ml



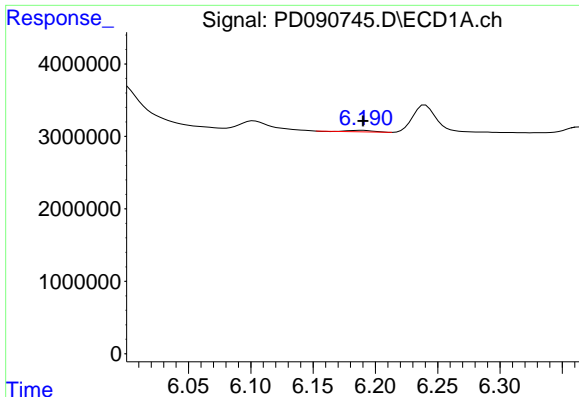
#11 alpha-Chlordane

R.T.: 5.998 min
 Delta R.T.: -0.022 min
 Response: 16191117
 Conc: 2.62 ng/ml



#11 alpha-Chlordane

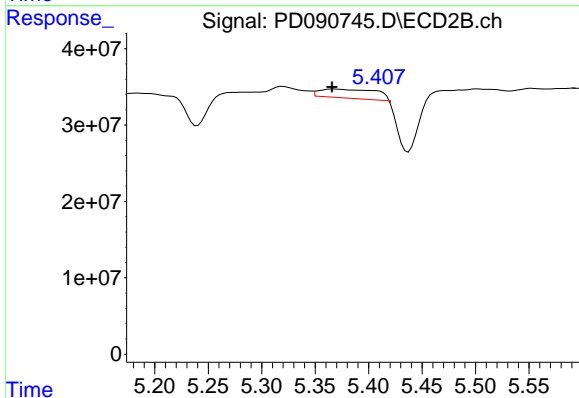
R.T.: 5.184 min
 Delta R.T.: 0.002 min
 Response: 104750841
 Conc: 2.43 ng/ml



#12 4,4'-DDE

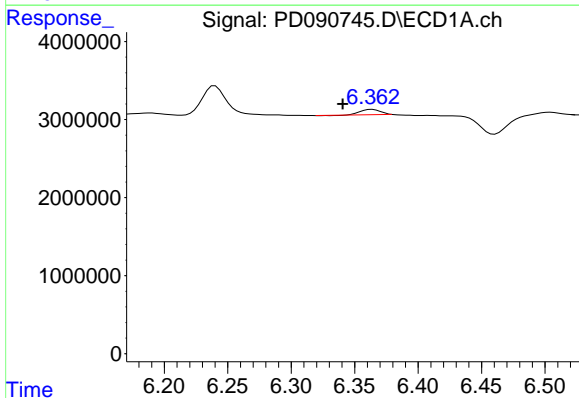
R.T.: 6.189 min
 Delta R.T.: 0.000 min
 Response: 300317
 Conc: 0.06 ng/ml

Instrument :
 ECD_D
 ClientSampleId :
 PEM



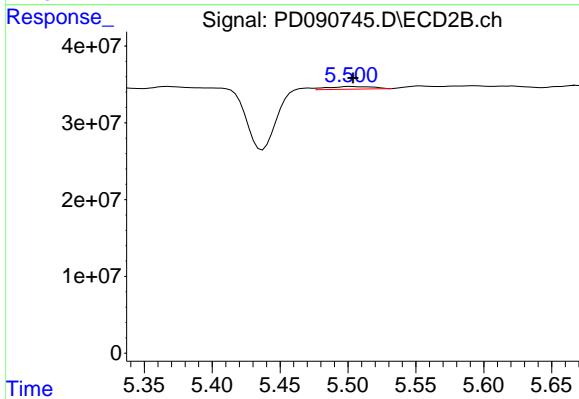
#12 4,4'-DDE

R.T.: 5.368 min
 Delta R.T.: 0.002 min
 Response: 42697959
 Conc: 0.97 ng/ml



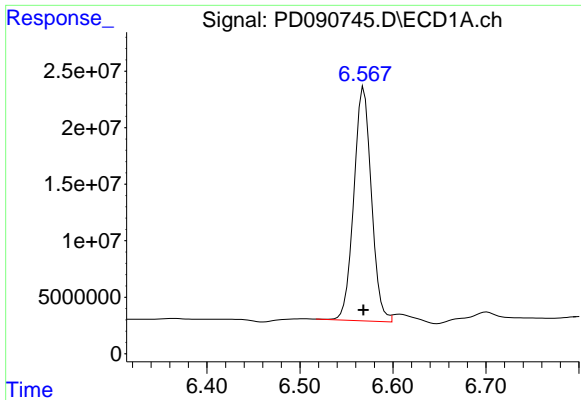
#13 Dieldrin

R.T.: 6.364 min
 Delta R.T.: 0.023 min
 Response: 766821
 Conc: 0.13 ng/ml



#13 Dieldrin

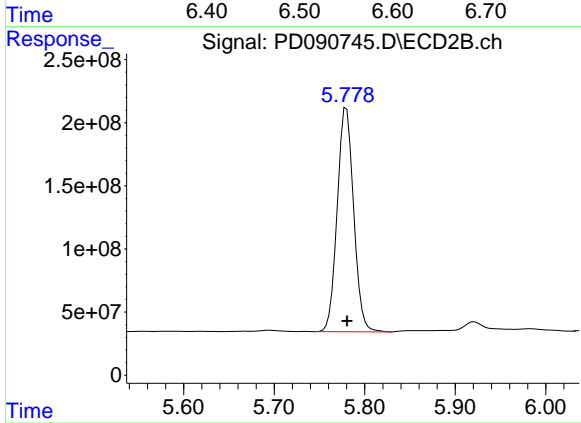
R.T.: 5.502 min
 Delta R.T.: -0.002 min
 Response: 8099431
 Conc: 0.18 ng/ml



#14 Endrin

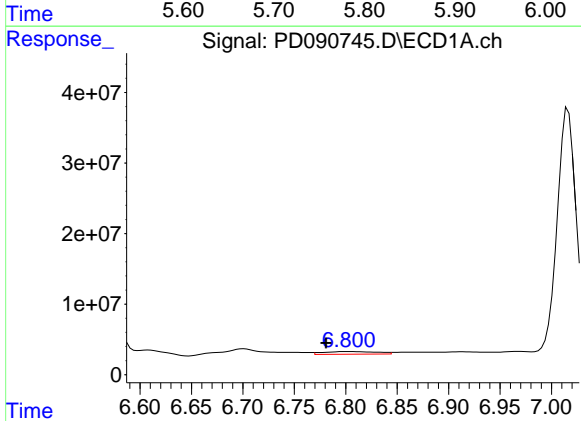
R.T.: 6.569 min
 Delta R.T.: 0.000 min
 Response: 271303381
 Conc: 54.77 ng/ml

Instrument :
 ECD_D
 ClientSampleId :
 PEM



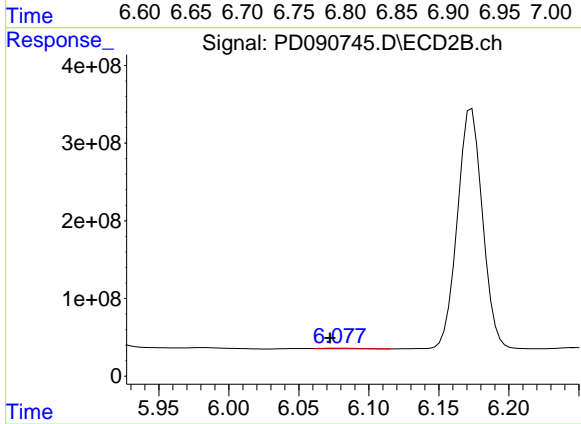
#14 Endrin

R.T.: 5.780 min
 Delta R.T.: 0.000 min
 Response: 2239722354
 Conc: 55.31 ng/ml



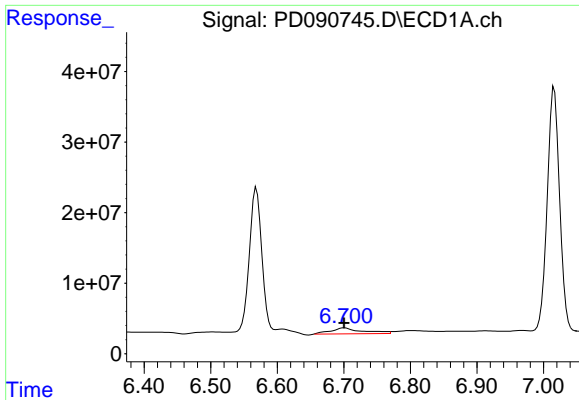
#15 Endosulfan II

R.T.: 6.802 min
 Delta R.T.: 0.021 min
 Response: 13996104
 Conc: 2.80 ng/ml



#15 Endosulfan II

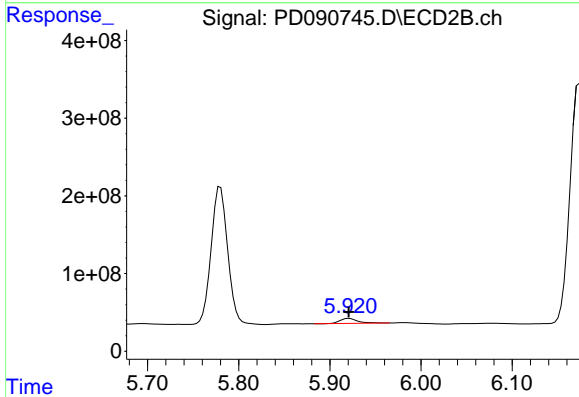
R.T.: 6.079 min
 Delta R.T.: 0.007 min
 Response: 11593607
 Conc: 0.31 ng/ml



#16 4,4'-DDD

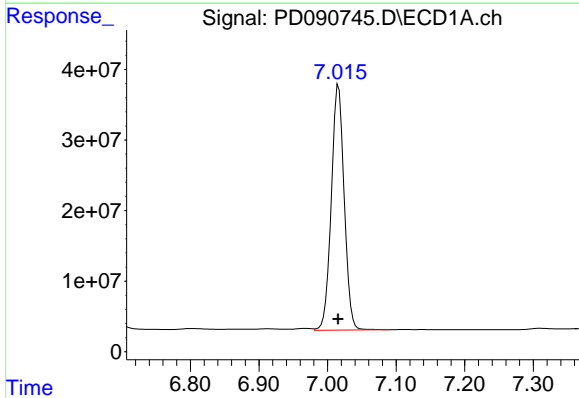
R.T.: 6.701 min
 Delta R.T.: 0.000 min
 Response: 28167815
 Conc: 6.95 ng/ml

Instrument :
 ECD_D
 ClientSampleId :
 PEM



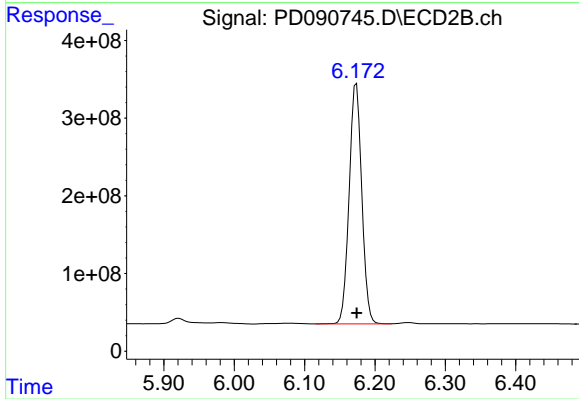
#16 4,4'-DDD

R.T.: 5.921 min
 Delta R.T.: 0.000 min
 Response: 86125893
 Conc: 2.36 ng/ml



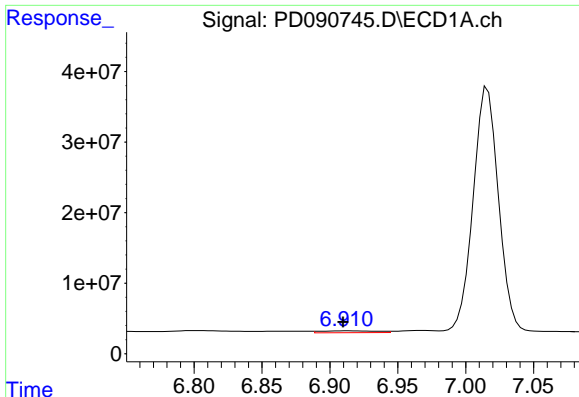
#17 4,4'-DDT

R.T.: 7.016 min
 Delta R.T.: 0.000 min
 Response: 453414085
 Conc: 110.31 ng/ml



#17 4,4'-DDT

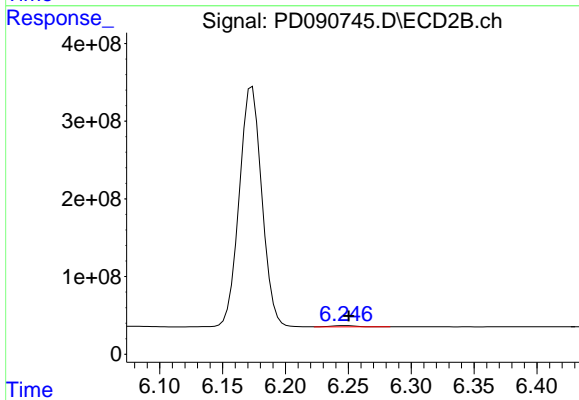
R.T.: 6.174 min
 Delta R.T.: 0.000 min
 Response: 3867032984
 Conc: 110.26 ng/ml



#18 Endrin aldehyde

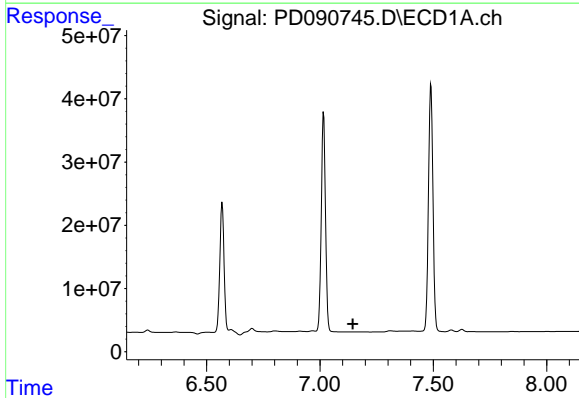
R.T.: 6.912 min
 Delta R.T.: 0.003 min
 Response: 7624709
 Conc: 2.08 ng/ml

Instrument :
 ECD_D
 ClientSampleId :
 PEM



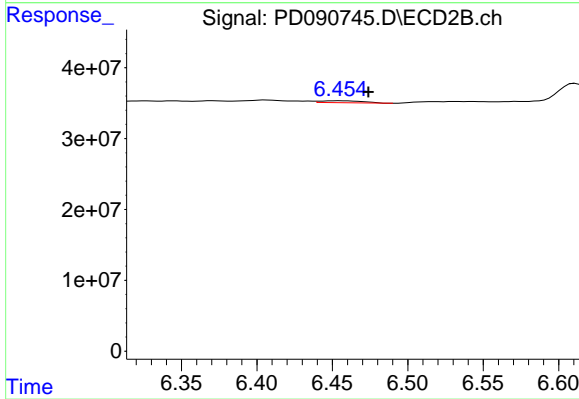
#18 Endrin aldehyde

R.T.: 6.247 min
 Delta R.T.: -0.003 min
 Response: 21217930
 Conc: 0.77 ng/ml



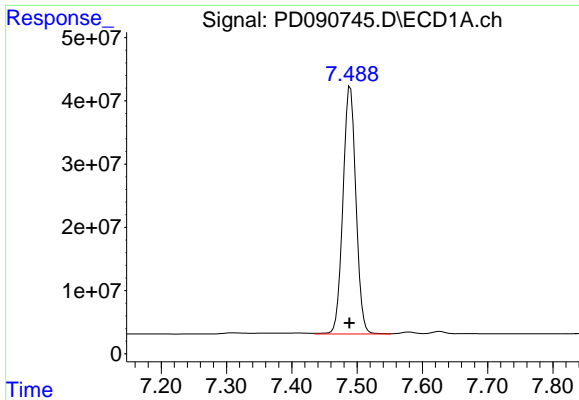
#19 Endosulfan Sulfate

R.T.: 0.000 min
 Exp R.T. : 7.145 min
 Response: 0
 Conc: N.D.



#19 Endosulfan Sulfate

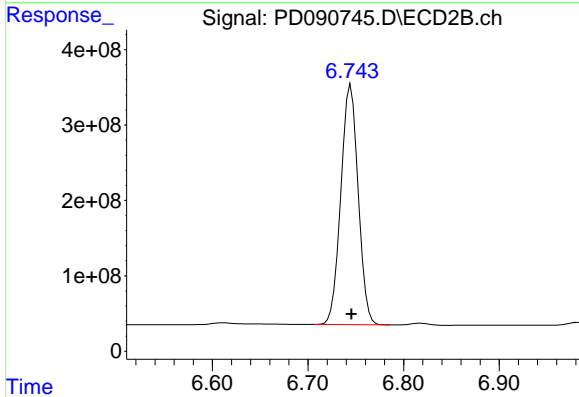
R.T.: 6.455 min
 Delta R.T.: -0.019 min
 Response: 5336210
 Conc: 0.15 ng/ml



#20 Methoxychlor

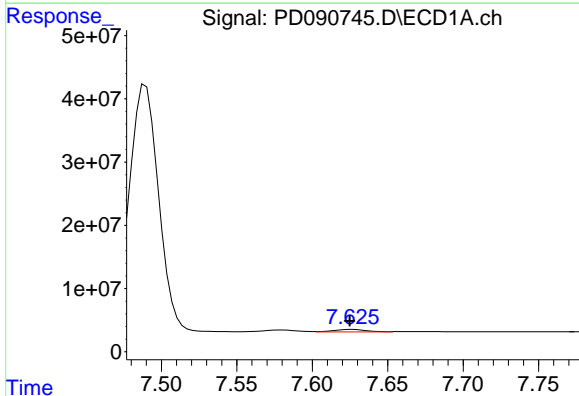
R.T.: 7.490 min
 Delta R.T.: 0.001 min
 Response: 541415120
 Conc: 254.71 ng/ml

Instrument :
 ECD_D
 ClientSampleId :
 PEM



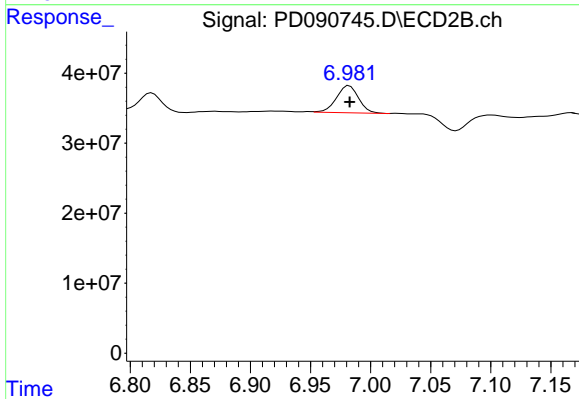
#20 Methoxychlor

R.T.: 6.745 min
 Delta R.T.: 0.000 min
 Response: 4019129944
 Conc: 230.62 ng/ml



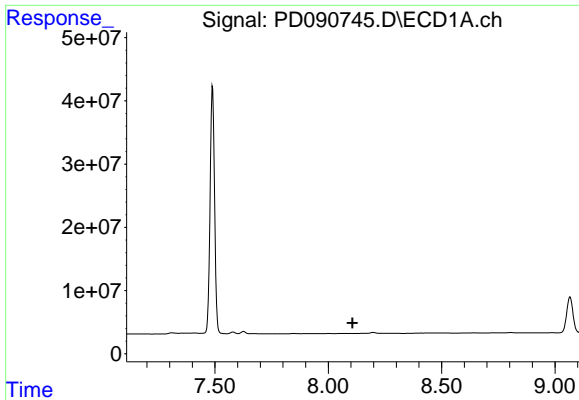
#21 Endrin ketone

R.T.: 7.626 min
 Delta R.T.: 0.002 min
 Response: 5854152
 Conc: 1.20 ng/ml



#21 Endrin ketone

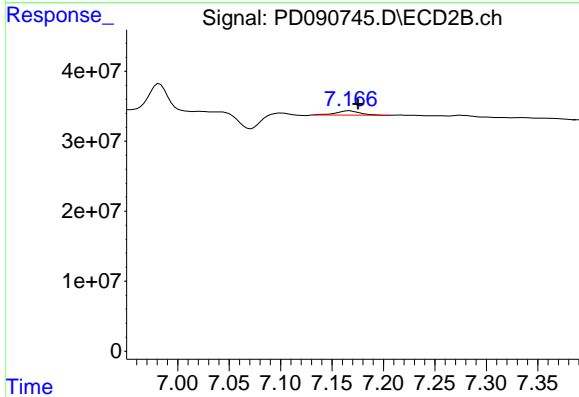
R.T.: 6.982 min
 Delta R.T.: 0.000 min
 Response: 49591571
 Conc: 1.31 ng/ml



#22 Mirex

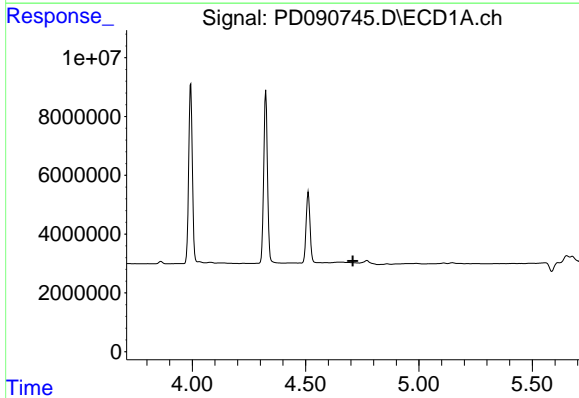
R.T.: 0.000 min
 Exp R.T.: 8.107 min
 Response: 0
 Conc: N.D.

Instrument :
 ECD_D
 ClientSampleId :
 PEM



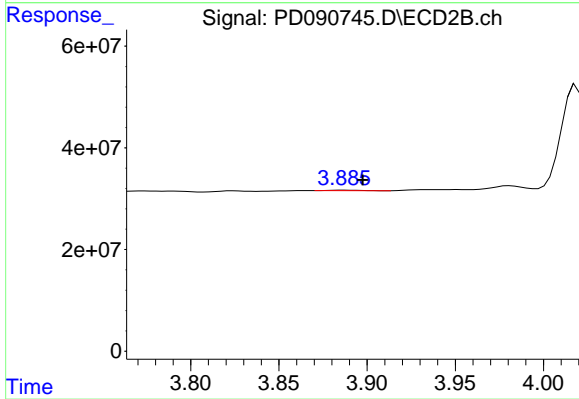
#22 Mirex

R.T.: 7.167 min
 Delta R.T.: -0.008 min
 Response: 10063862
 Conc: 0.39 ng/ml



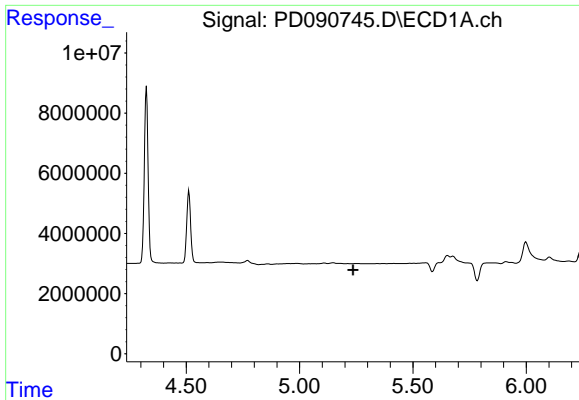
#23 Chlordane-1

R.T.: 0.000 min
 Exp R.T.: 4.709 min
 Response: 0
 Conc: N.D.



#23 Chlordane-1

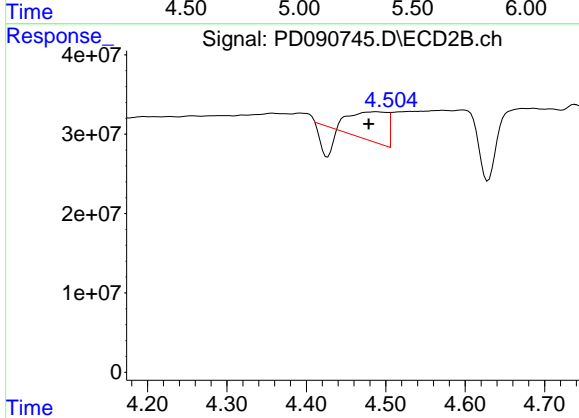
R.T.: 3.887 min
 Delta R.T.: -0.011 min
 Response: 1153933
 Conc: 0.93 ng/ml



#24 Chlordane-2

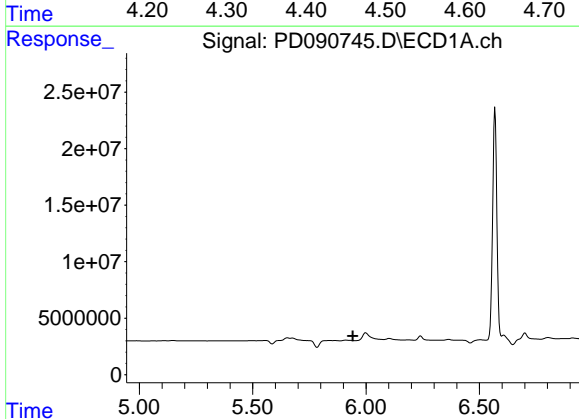
R.T.: 0.000 min
 Exp R.T. : 5.236 min
 Response: 0
 Conc: N.D.

Instrument :
 ECD_D
 ClientSampleId :
 PEM



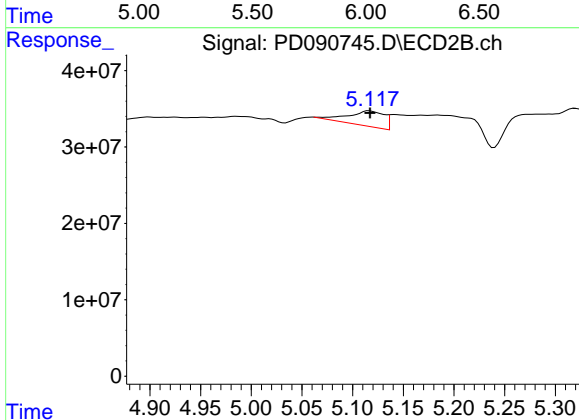
#24 Chlordane-2

R.T.: 4.489 min
 Delta R.T.: 0.010 min
 Response: 87399847
 Conc: 67.00 ng/ml



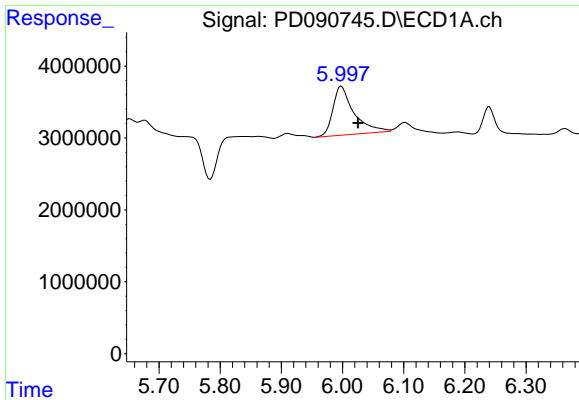
#25 Chlordane-3

R.T.: 0.000 min
 Exp R.T. : 5.941 min
 Response: 0
 Conc: N.D.



#25 Chlordane-3

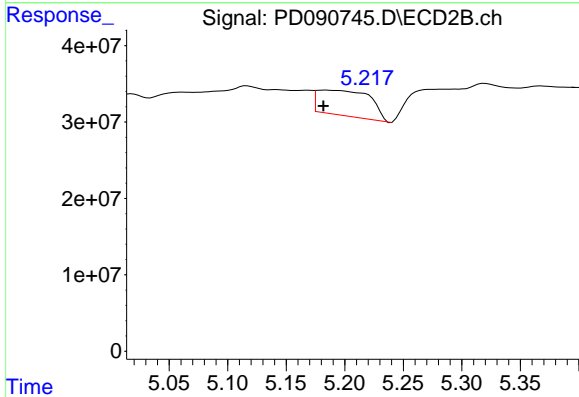
R.T.: 5.117 min
 Delta R.T.: 0.000 min
 Response: 50302897
 Conc: 12.93 ng/ml



#26 Chlordane-4

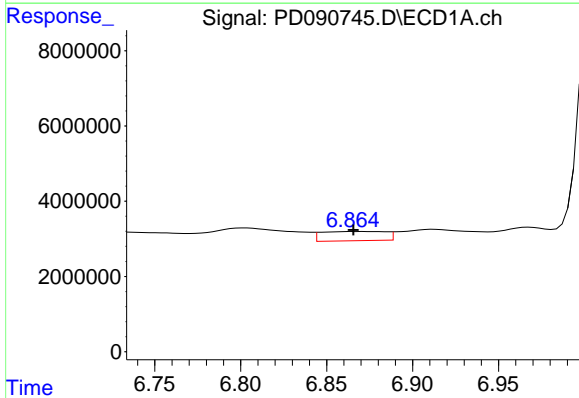
R.T.: 5.998 min
 Delta R.T.: -0.027 min
 Response: 16191117
 Conc: 16.71 ng/ml

Instrument :
 ECD_D
 ClientSampleId :
 PEM



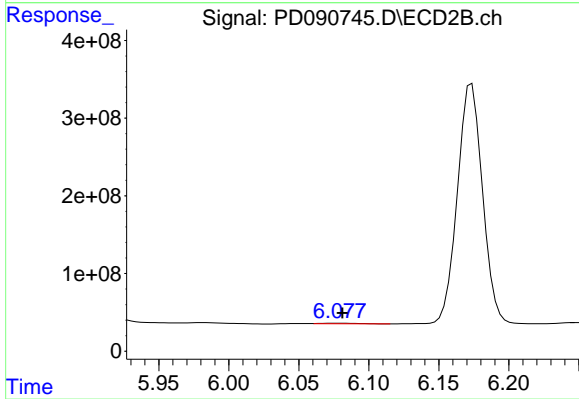
#26 Chlordane-4

R.T.: 5.184 min
 Delta R.T.: 0.002 min
 Response: 104750841
 Conc: 31.35 ng/ml



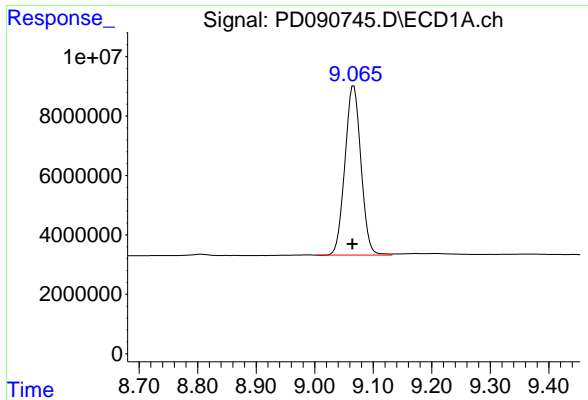
#27 Chlordane-5

R.T.: 6.866 min
 Delta R.T.: 0.000 min
 Response: 6389205
 Conc: 42.52 ng/ml



#27 Chlordane-5

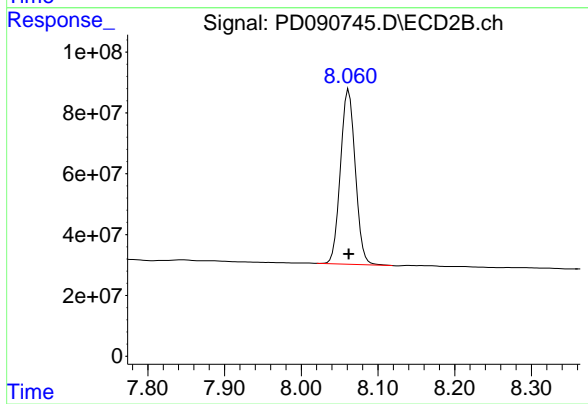
R.T.: 6.079 min
 Delta R.T.: -0.002 min
 Response: 11593607
 Conc: 7.85 ng/ml



#28 Decachlorobiphenyl

R.T.: 9.067 min
Delta R.T.: 0.002 min
Response: 108475404
Conc: 23.19 ng/ml

Instrument :
ECD_D
ClientSampleId :
PEM



#28 Decachlorobiphenyl

R.T.: 8.062 min
Delta R.T.: 0.000 min
Response: 774560818
Conc: 25.57 ng/ml