

Data Path : Z:\pestpcbsrv\HPCHEM1\ECD_D\Data\PD102125\
 Data File : PD090747.D
 Signal(s) : Signal #1: ECD1A.ch Signal #2: ECD2B.ch
 Acq On : 21 Oct 2025 20:32
 Operator : AR\AJ
 Sample : Q3393-03
 Misc :
 ALS Vial : 22 Sample Multiplier: 1

Instrument :
 ECD_D
 ClientSampleId :
 PR132-S08-013038-20251017

Integration File signal 1: autoint1.e
 Integration File signal 2: autoint2.e
 Quant Time: Oct 23 13:13:05 2025
 Quant Method : Z:\pestpcbsrv\HPCHEM1\ECD_D\Method\PD101725.M
 Quant Title : GC Extractables
 QLast Update : Fri Oct 17 17:43:28 2025
 Response via : Initial Calibration
 Integrator: ChemStation

Volume Inj. : 1 µl
 Signal #1 Phase : ZB-MR2 Signal #2 Phase: ZB-MR2
 Signal #1 Info : 30M x 0.32mm x0.5 Signal #2 Info : 30M x 0.32mm x 0.25µm

Compound	RT#1	RT#2	Resp#1	Resp#2	ng/ml	ng/ml

System Monitoring Compounds						
1) SA Tetrachlo...	3.544	2.873	62556180	471.1E6	20.088	15.821
28) SA Decachlor...	9.066	8.061	64655517	392.9E6	13.821	12.970
Target Compounds						
2) A alpha-BHC	3.989	3.369f	253156	8113720	0.035	0.159 #
3) MA gamma-BHC...	0.000	3.716	0	6523755	N.D.	0.138 #
4) MA Heptachlor	4.942f	4.100f	1656115	14938426	0.296	0.335
5) MB Aldrin	5.253	4.357	2269168	33610653	0.347	0.726 #
6) B beta-BHC	4.483f	4.040f	3653438	70588106	1.395	3.560 #
7) B delta-BHC	4.771	4.269	3038468	16488202	0.449	0.346
8) B Heptachlo...	5.681	4.860	428703	184.1E6	0.074	4.318 #
9) A Endosulfan I	6.095f	5.256f	3570565	56919277	0.645	1.445 #
10) B gamma-Chl...	5.912f	5.125	128982	106.3E6	0.022	2.366 #
11) B alpha-Chl...	5.995f	5.197f	9311842	114.9E6	1.507	2.664 #
12) B 4,4'-DDE	6.199	5.381f	-1188230	18376037	N.D.	0.419
13) MA Dieldrin	0.000	5.505	0	97839068	N.D.	2.214 #
14) MA Endrin	6.569	5.784	332655	6723624	0.067	0.166 #
15) B Endosulfa...	6.778	6.074	298788	24153968	0.060	0.643 #
16) A 4,4'-DDD	6.690	0.000	1405147	0	0.347	N.D. #
17) MA 4,4'-DDT	0.000	6.171	0	18690972	N.D.	0.533 #
18) B Endrin al...	6.929f	6.278f	1044433	7501825	0.285	0.271
20) A Methoxychlor	0.000	6.722f	0	4376312	N.D.	0.251 #
21) B Endrin ke...	7.609f	6.958f	937882	24547037	0.193	0.651 #
22) Mirex	0.000	7.179	0	10497479	N.D.	0.409 #
23) Chlordane-1	4.721	3.894	608974	110.1E6	3.223	88.372 #
24) Chlordane-2	5.253	4.501f	2269168	12696898	11.749	9.733
25) Chlordane-3	5.912f	5.125	128982	106.3E6	0.169	27.324 #
26) Chlordane-4	0.000	5.197	0	114.9E6	N.D.	34.394 #
27) Chlordane-5	6.841f	6.074	243004	24153968	1.617	16.364 #

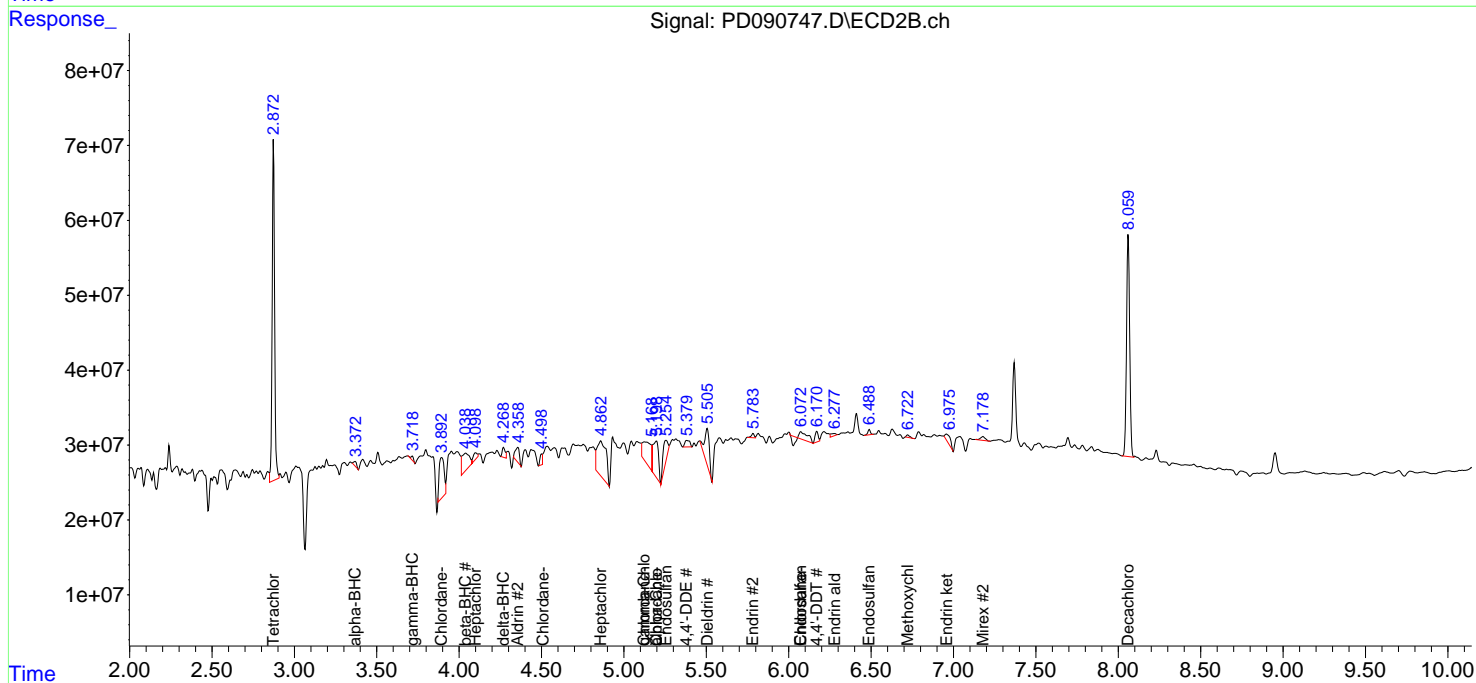
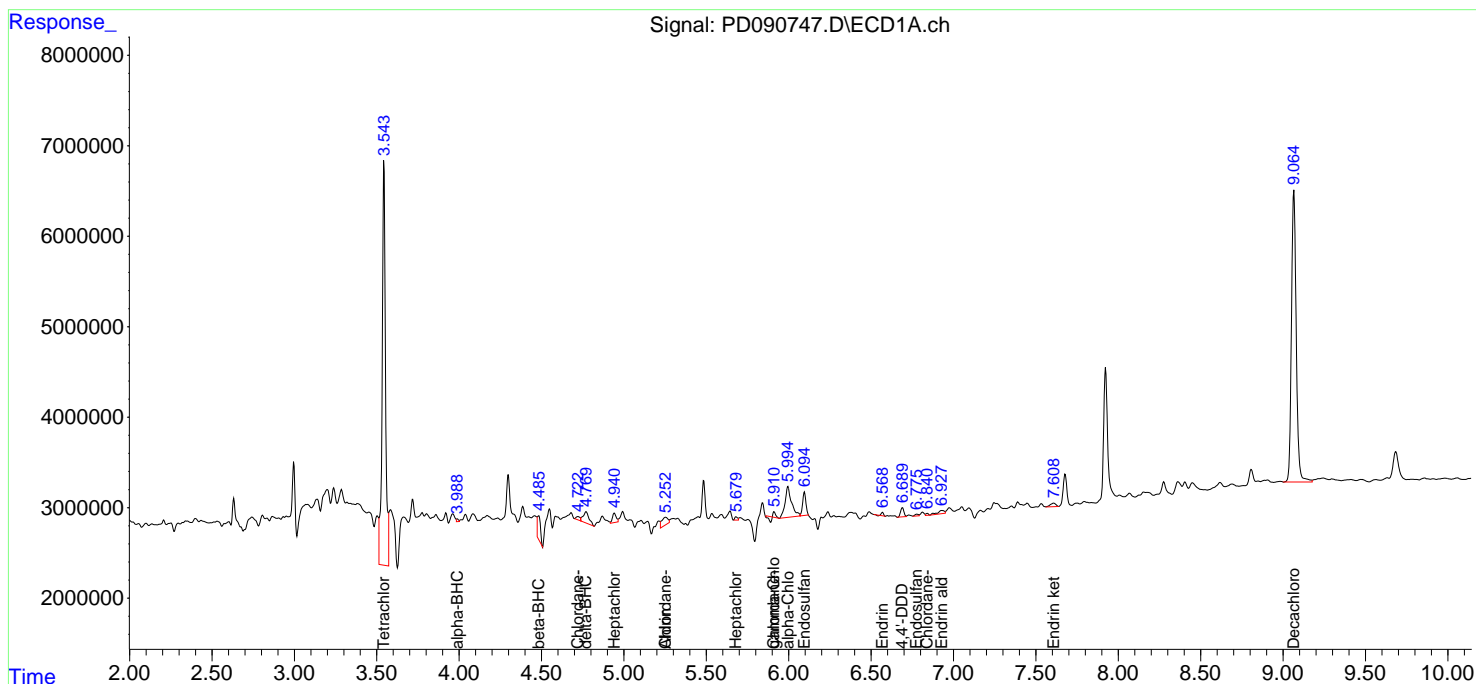
(f)=RT Delta > 1/2 Window (#)=Amounts differ by > 25% (m)=manual int.

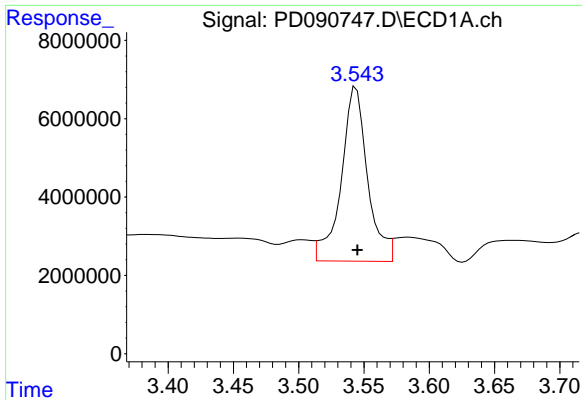
Data Path : Z:\pestpcbsrv\HPCHEM1\ECD_D\Data\PD102125\
 Data File : PD090747.D
 Signal(s) : Signal #1: ECD1A.ch Signal #2: ECD2B.ch
 Acq On : 21 Oct 2025 20:32
 Operator : AR\AJ
 Sample : Q3393-03
 Misc :
 ALS Vial : 22 Sample Multiplier: 1

Instrument :
 ECD_D
 ClientSampleId :
 PR132-S08-013038-20251017

Integration File signal 1: autoint1.e
 Integration File signal 2: autoint2.e
 Quant Time: Oct 23 13:13:05 2025
 Quant Method : Z:\pestpcbsrv\HPCHEM1\ECD_D\Method\PD101725.M
 Quant Title : GC Extractables
 QLast Update : Fri Oct 17 17:43:28 2025
 Response via : Initial Calibration
 Integrator: ChemStation

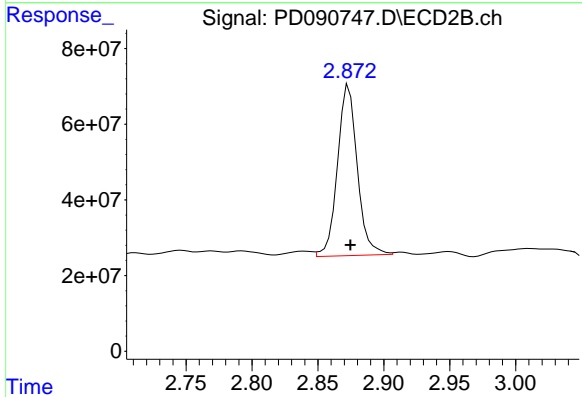
Volume Inj. : 1 µl
 Signal #1 Phase : ZB-MR1 Signal #2 Phase: ZB-MR2
 Signal #1 Info : 30M x 0.32mm x0.5 Signal #2 Info : 30M x 0.32mm x 0.25µm



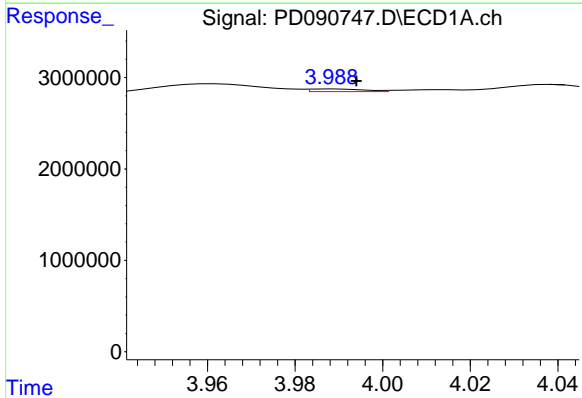


#1 Tetrachloro-m-xylene
 R.T.: 3.544 min
 Delta R.T.: 0.000 min
 Response: 62556180
 Conc: 20.09 ng/ml

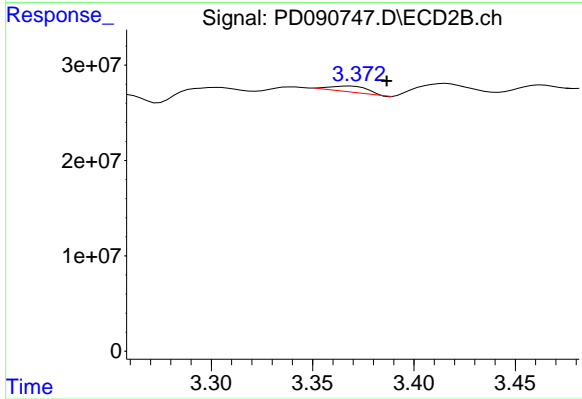
Instrument :
 ECD_D
 ClientSampleId :
 PR132-S08-013038-20251017



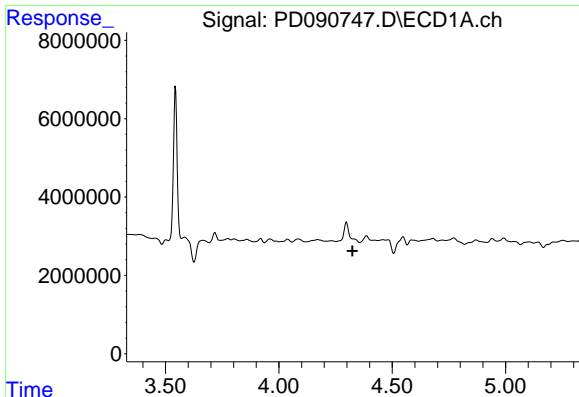
#1 Tetrachloro-m-xylene
 R.T.: 2.873 min
 Delta R.T.: -0.001 min
 Response: 471112360
 Conc: 15.82 ng/ml



#2 alpha-BHC
 R.T.: 3.989 min
 Delta R.T.: -0.005 min
 Response: 253156
 Conc: 0.04 ng/ml



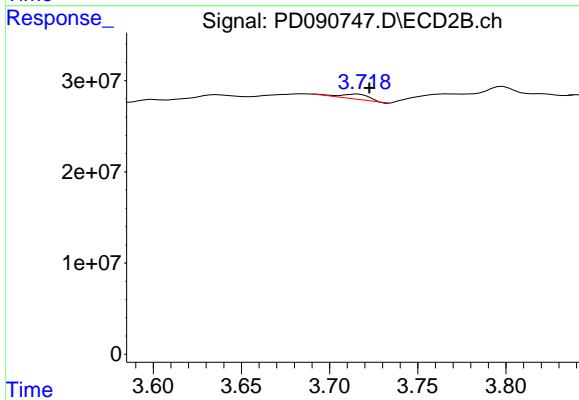
#2 alpha-BHC
 R.T.: 3.369 min
 Delta R.T.: -0.018 min
 Response: 8113720
 Conc: 0.16 ng/ml



#3 gamma-BHC (Lindane)

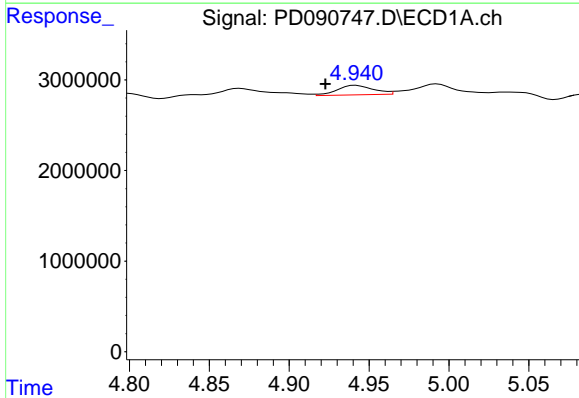
R.T.: 0.000 min
 Exp R.T.: 4.325 min
 Response: 0
 Conc: N.D.

Instrument :
 ECD_D
 ClientSampleId :
 PR132-S08-013038-20251017



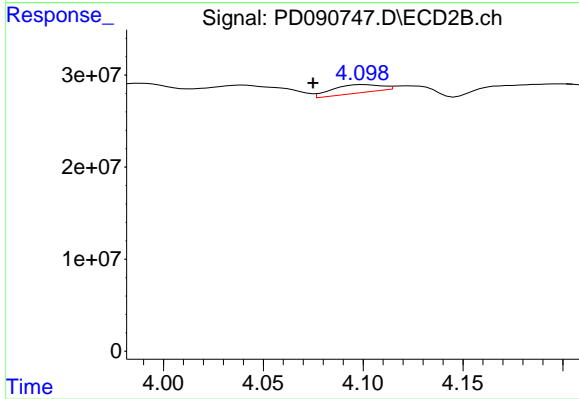
#3 gamma-BHC (Lindane)

R.T.: 3.716 min
 Delta R.T.: -0.007 min
 Response: 6523755
 Conc: 0.14 ng/ml



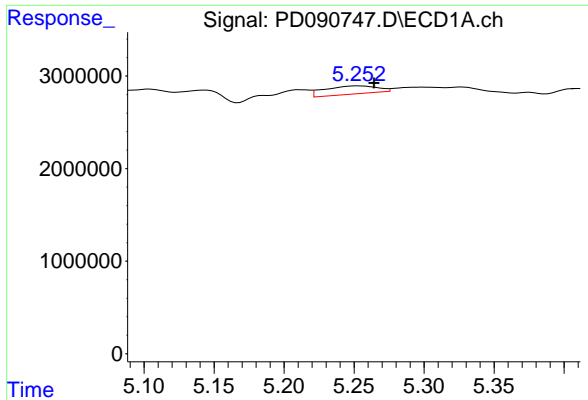
#4 Heptachlor

R.T.: 4.942 min
 Delta R.T.: 0.019 min
 Response: 1656115
 Conc: 0.30 ng/ml



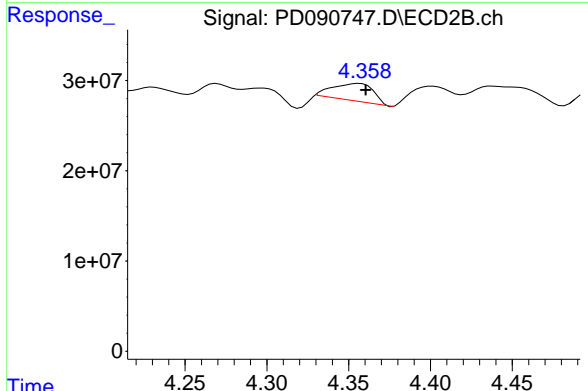
#4 Heptachlor

R.T.: 4.100 min
 Delta R.T.: 0.025 min
 Response: 14938426
 Conc: 0.33 ng/ml

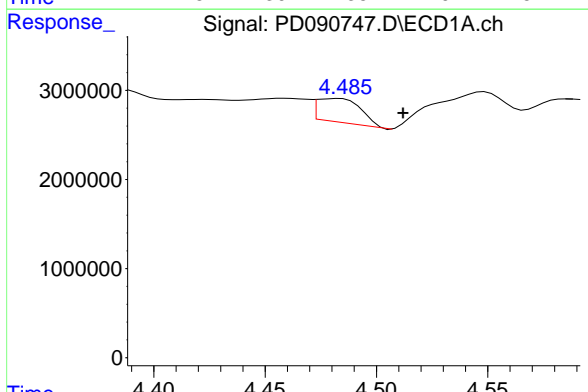


#5 Aldrin
 R.T.: 5.253 min
 Delta R.T.: -0.011 min
 Response: 2269168
 Conc: 0.35 ng/ml

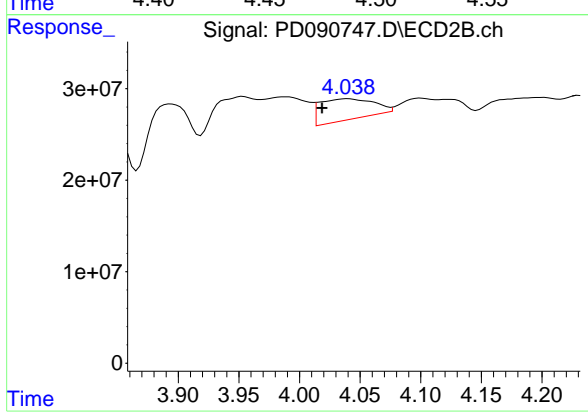
Instrument : ECD_D
 ClientSampleId : PR132-S08-013038-20251017



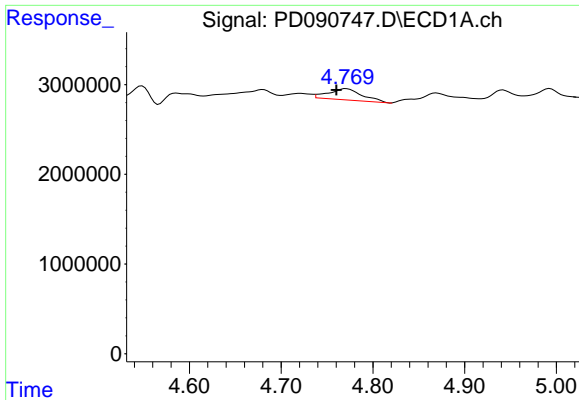
#5 Aldrin
 R.T.: 4.357 min
 Delta R.T.: -0.004 min
 Response: 33610653
 Conc: 0.73 ng/ml



#6 beta-BHC
 R.T.: 4.483 min
 Delta R.T.: -0.029 min
 Response: 3653438
 Conc: 1.39 ng/ml



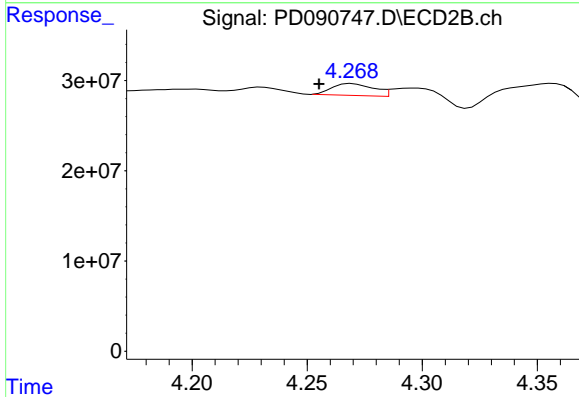
#6 beta-BHC
 R.T.: 4.040 min
 Delta R.T.: 0.022 min
 Response: 70588106
 Conc: 3.56 ng/ml



#7 delta-BHC

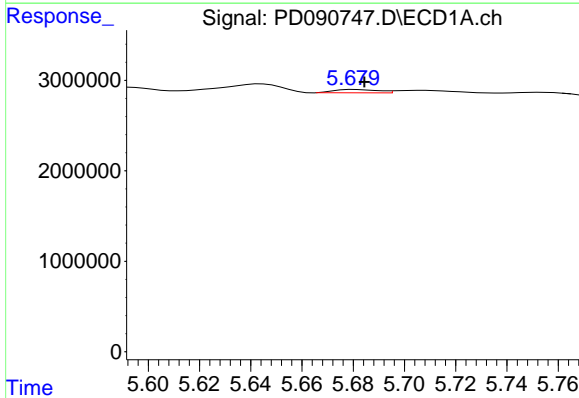
R.T.: 4.771 min
 Delta R.T.: 0.011 min
 Response: 3038468
 Conc: 0.45 ng/ml

Instrument :
 ECD_D
 ClientSampleId :
 PR132-S08-013038-20251017



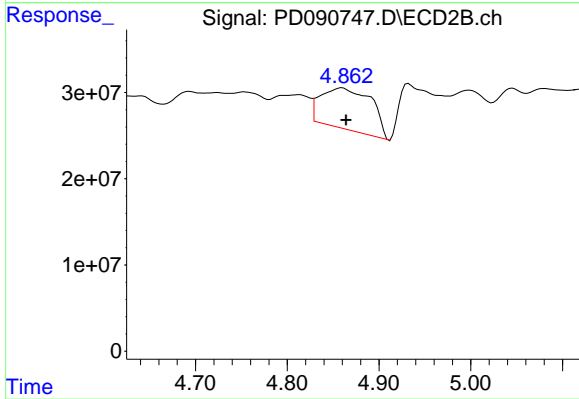
#7 delta-BHC

R.T.: 4.269 min
 Delta R.T.: 0.014 min
 Response: 16488202
 Conc: 0.35 ng/ml



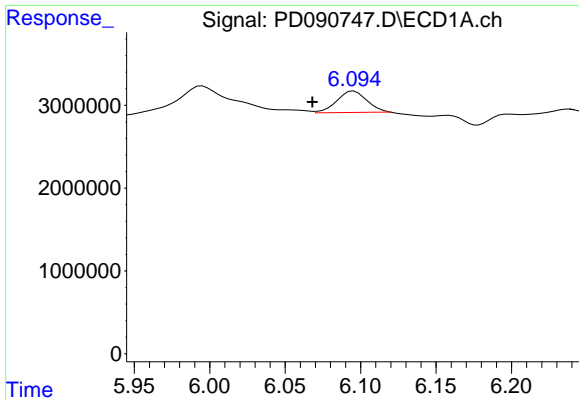
#8 Heptachlor epoxide

R.T.: 5.681 min
 Delta R.T.: -0.003 min
 Response: 428703
 Conc: 0.07 ng/ml



#8 Heptachlor epoxide

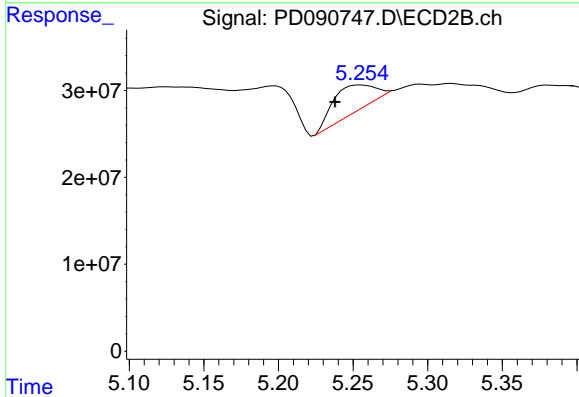
R.T.: 4.860 min
 Delta R.T.: -0.004 min
 Response: 184095864
 Conc: 4.32 ng/ml



#9 Endosulfan I

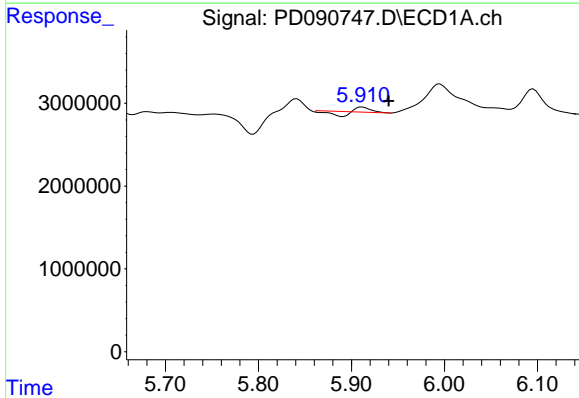
R.T.: 6.095 min
 Delta R.T.: 0.028 min
 Response: 3570565
 Conc: 0.64 ng/ml

Instrument : ECD_D
 ClientSampleId : PR132-S08-013038-20251017



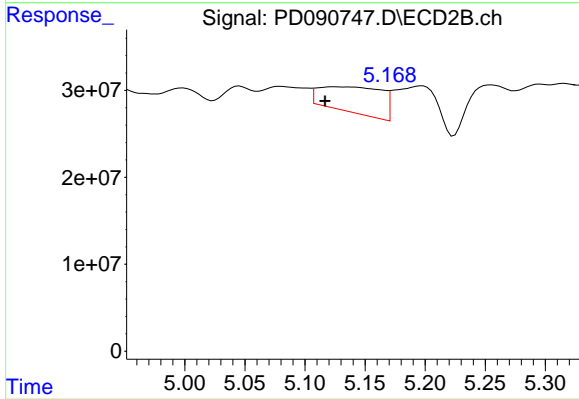
#9 Endosulfan I

R.T.: 5.256 min
 Delta R.T.: 0.018 min
 Response: 56919277
 Conc: 1.45 ng/ml



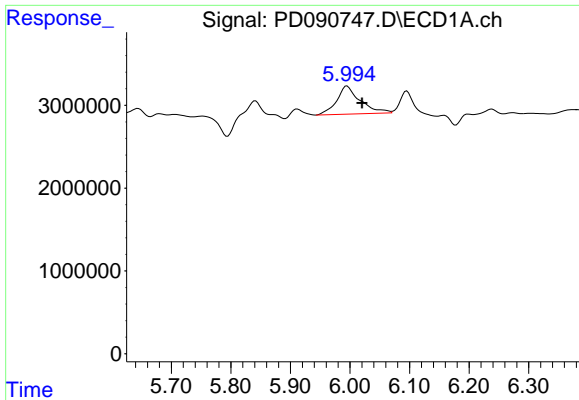
#10 gamma-Chlordane

R.T.: 5.912 min
 Delta R.T.: -0.029 min
 Response: 128982
 Conc: 0.02 ng/ml



#10 gamma-Chlordane

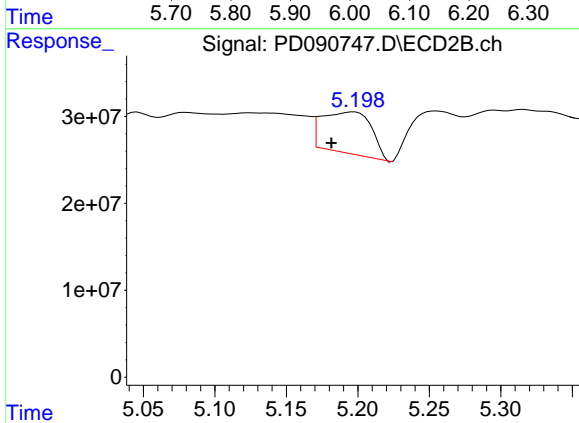
R.T.: 5.125 min
 Delta R.T.: 0.008 min
 Response: 106334835
 Conc: 2.37 ng/ml



#11 alpha-Chlordane

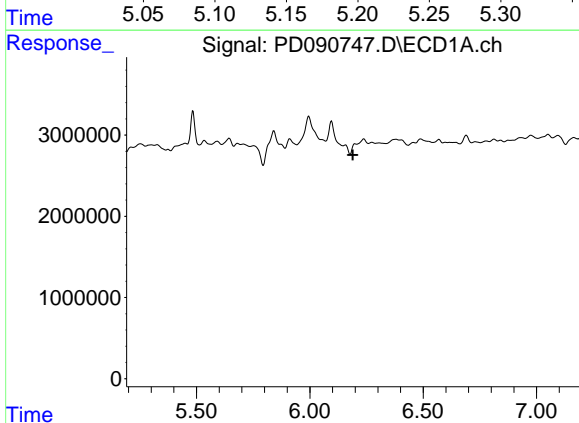
R.T.: 5.995 min
 Delta R.T.: -0.025 min
 Response: 9311842
 Conc: 1.51 ng/ml

Instrument :
 ECD_D
 ClientSampleId :
 PR132-S08-013038-20251017



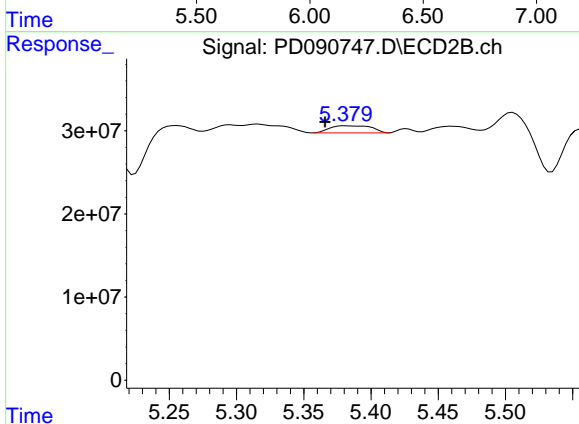
#11 alpha-Chlordane

R.T.: 5.197 min
 Delta R.T.: 0.016 min
 Response: 114920025
 Conc: 2.66 ng/ml



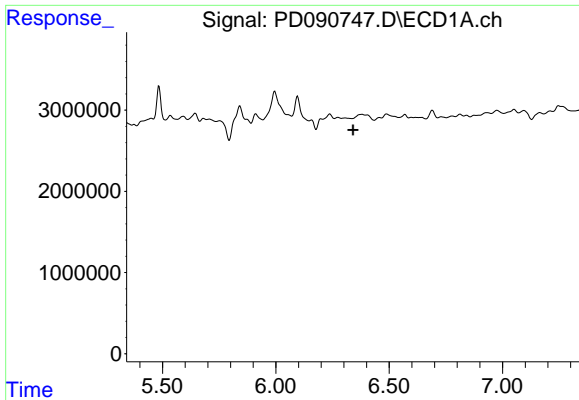
#12 4,4'-DDE

R.T.: 6.199 min
 Delta R.T.: 0.009 min
 Response: -1188230
 Conc: N.D.



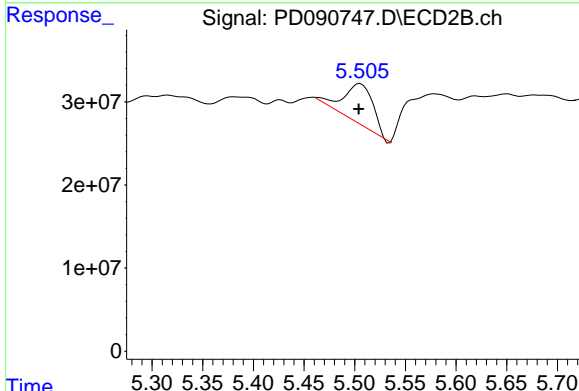
#12 4,4'-DDE

R.T.: 5.381 min
 Delta R.T.: 0.016 min
 Response: 18376037
 Conc: 0.42 ng/ml

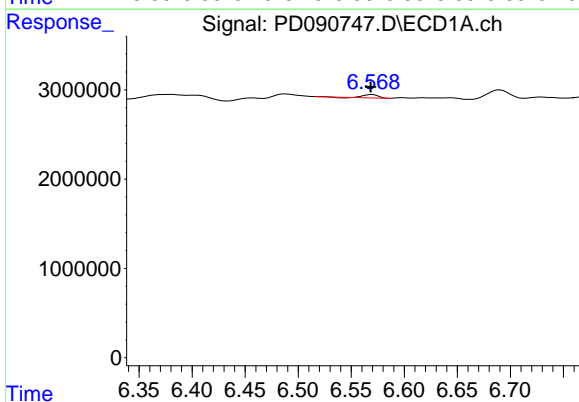


#13 Dieldrin
 R.T.: 0.000 min
 Exp R.T.: 6.340 min
 Response: 0
 Conc: N.D.

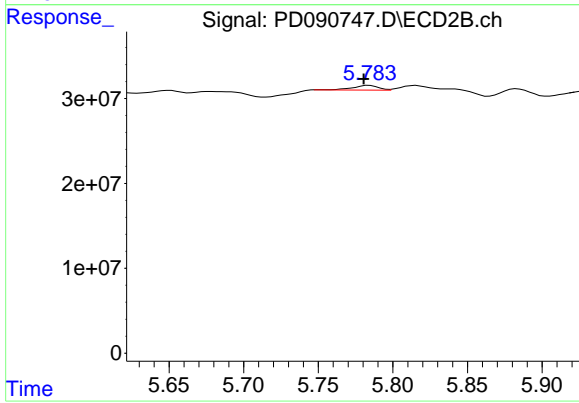
Instrument : ECD_D
 ClientSampleId : PR132-S08-013038-20251017



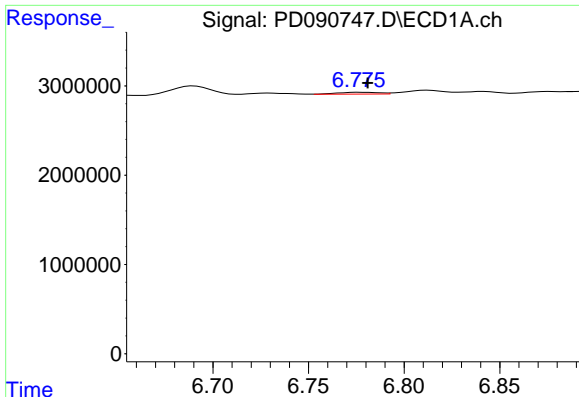
#13 Dieldrin
 R.T.: 5.505 min
 Delta R.T.: 0.001 min
 Response: 97839068
 Conc: 2.21 ng/ml



#14 Endrin
 R.T.: 6.569 min
 Delta R.T.: 0.001 min
 Response: 332655
 Conc: 0.07 ng/ml



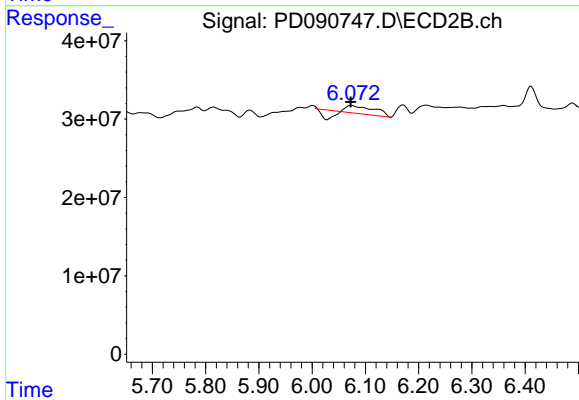
#14 Endrin
 R.T.: 5.784 min
 Delta R.T.: 0.004 min
 Response: 6723624
 Conc: 0.17 ng/ml



#15 Endosulfan II

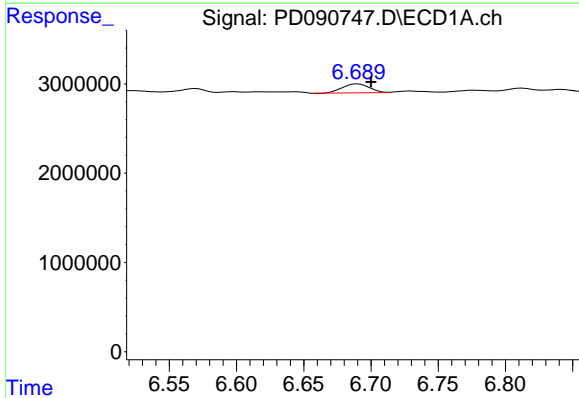
R.T.: 6.778 min
 Delta R.T.: -0.003 min
 Response: 298788
 Conc: 0.06 ng/ml

Instrument :
 ECD_D
 ClientSampleId :
 PR132-S08-013038-20251017



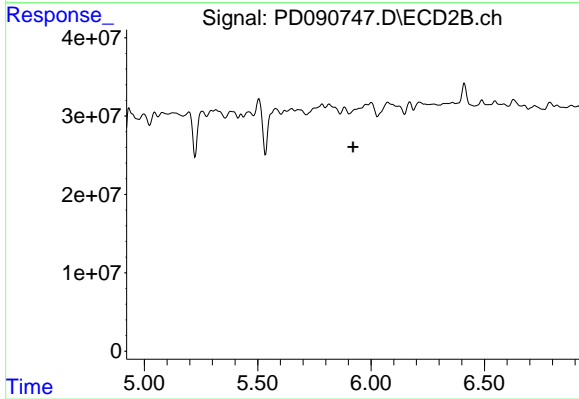
#15 Endosulfan II

R.T.: 6.074 min
 Delta R.T.: 0.002 min
 Response: 24153968
 Conc: 0.64 ng/ml



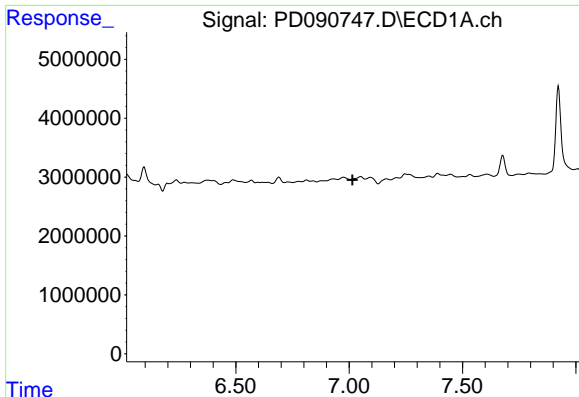
#16 4,4'-DDD

R.T.: 6.690 min
 Delta R.T.: -0.010 min
 Response: 1405147
 Conc: 0.35 ng/ml



#16 4,4'-DDD

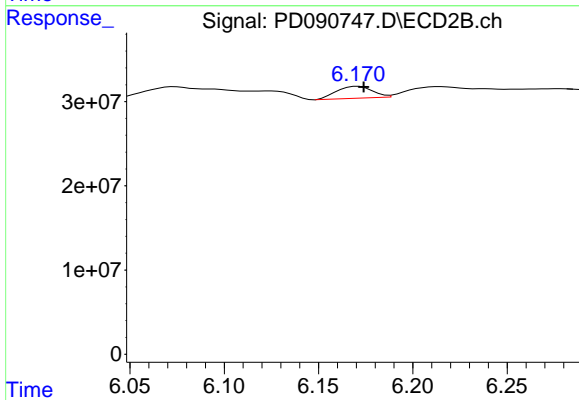
R.T.: 0.000 min
 Exp R.T. : 5.921 min
 Response: 0
 Conc: N.D.



#17 4,4'-DDT

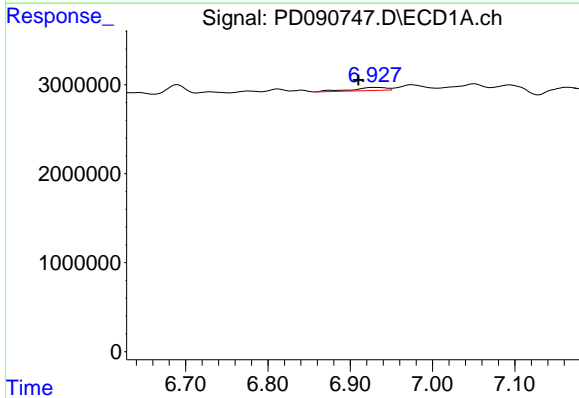
R.T.: 0.000 min
 Exp R.T.: 7.015 min
 Response: 0
 Conc: N.D.

Instrument :
 ECD_D
 ClientSampleId :
 PR132-S08-013038-20251017



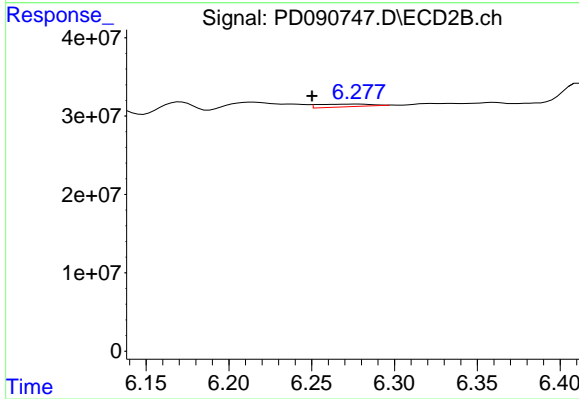
#17 4,4'-DDT

R.T.: 6.171 min
 Delta R.T.: -0.003 min
 Response: 18690972
 Conc: 0.53 ng/ml



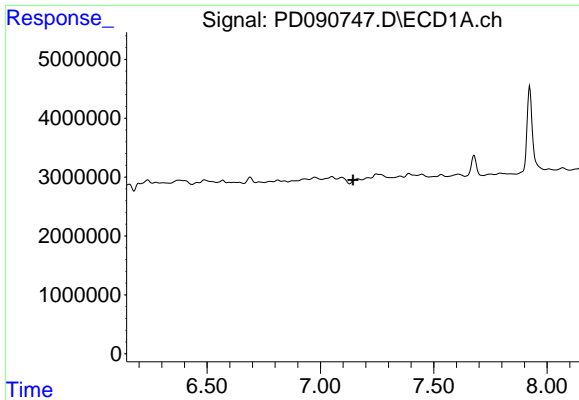
#18 Endrin aldehyde

R.T.: 6.929 min
 Delta R.T.: 0.019 min
 Response: 1044433
 Conc: 0.29 ng/ml



#18 Endrin aldehyde

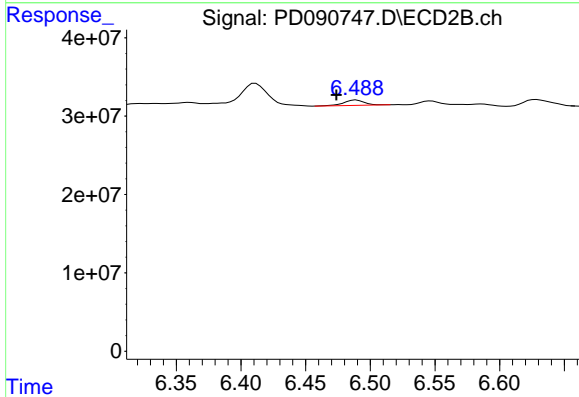
R.T.: 6.278 min
 Delta R.T.: 0.027 min
 Response: 7501825
 Conc: 0.27 ng/ml



#19 Endosulfan Sulfate

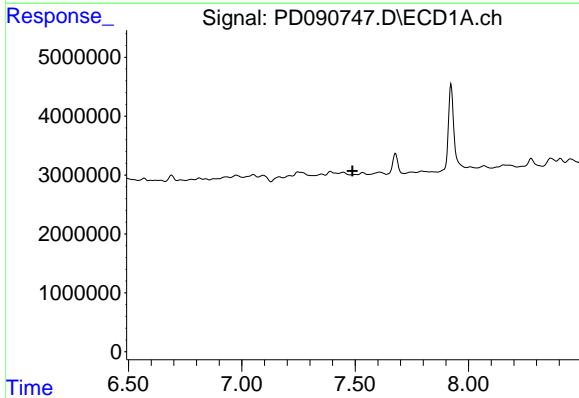
R.T.: 7.165 min
 Delta R.T.: 0.020 min
 Response: -1225885
 Conc: N.D.

Instrument :
 ECD_D
 ClientSampleId :
 PR132-S08-013038-20251017



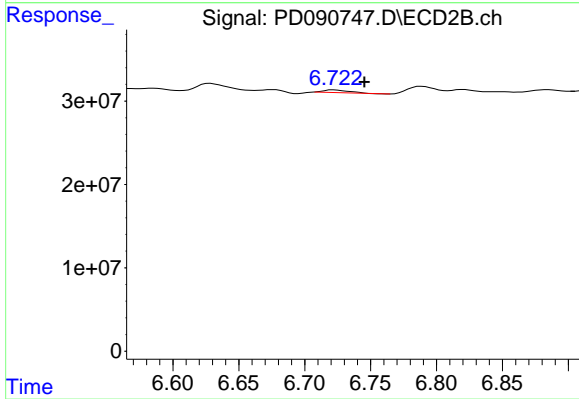
#19 Endosulfan Sulfate

R.T.: 6.489 min
 Delta R.T.: 0.015 min
 Response: 7317185
 Conc: 0.20 ng/ml



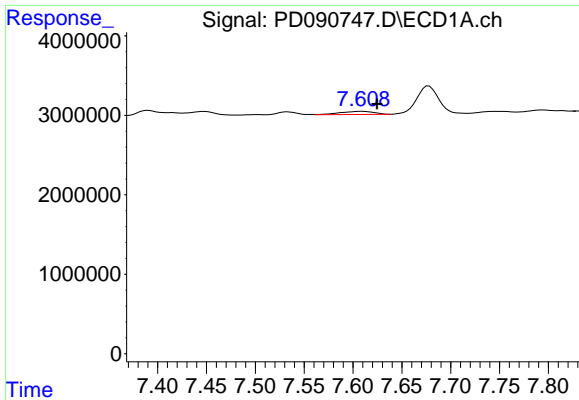
#20 Methoxychlor

R.T.: 0.000 min
 Exp R.T. : 7.488 min
 Response: 0
 Conc: N.D.



#20 Methoxychlor

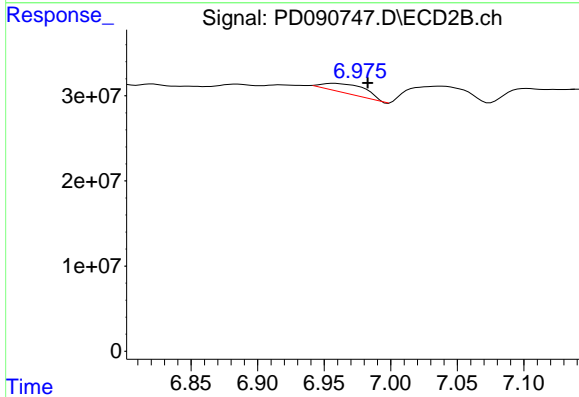
R.T.: 6.722 min
 Delta R.T.: -0.023 min
 Response: 4376312
 Conc: 0.25 ng/ml



#21 Endrin ketone

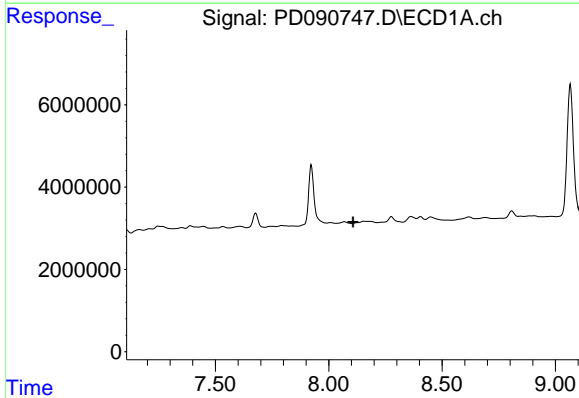
R.T.: 7.609 min
 Delta R.T.: -0.016 min
 Response: 937882
 Conc: 0.19 ng/ml

Instrument :
 ECD_D
 ClientSampleId :
 PR132-S08-013038-20251017



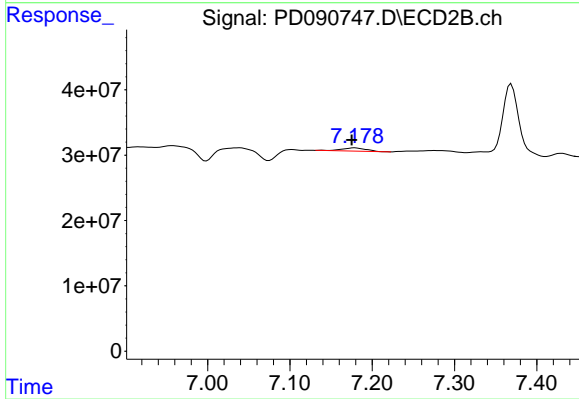
#21 Endrin ketone

R.T.: 6.958 min
 Delta R.T.: -0.025 min
 Response: 24547037
 Conc: 0.65 ng/ml



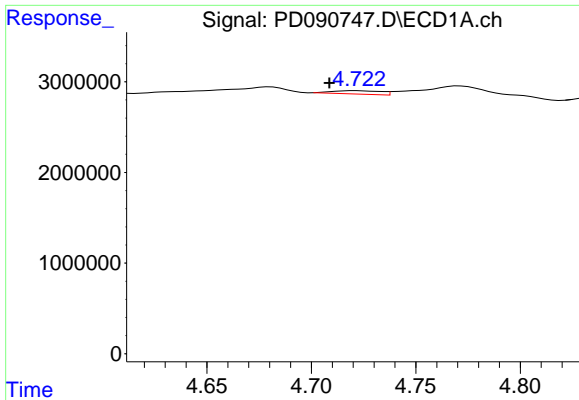
#22 Mirex

R.T.: 0.000 min
 Exp R.T. : 8.107 min
 Response: 0
 Conc: N.D.



#22 Mirex

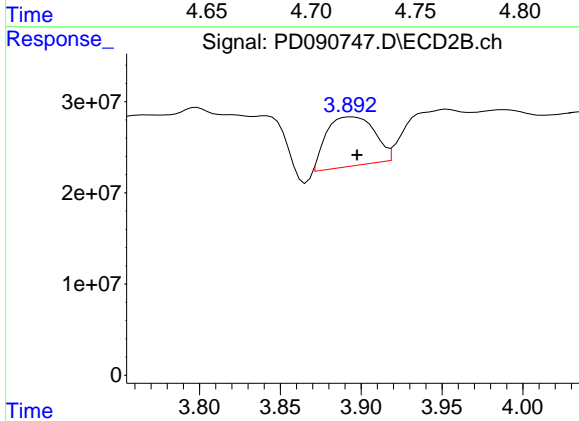
R.T.: 7.179 min
 Delta R.T.: 0.004 min
 Response: 10497479
 Conc: 0.41 ng/ml



#23 Chlordane-1

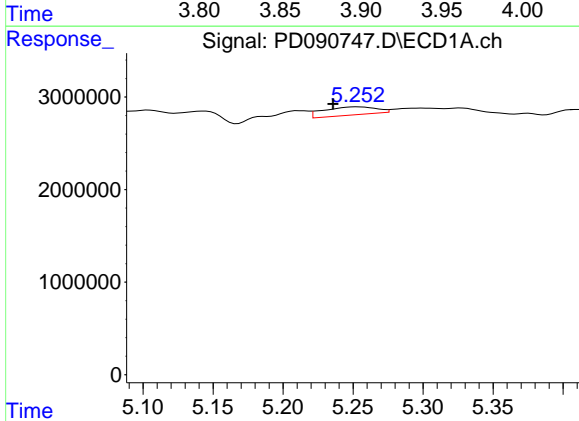
R.T.: 4.721 min
 Delta R.T.: 0.012 min
 Response: 608974
 Conc: 3.22 ng/ml

Instrument : ECD_D
 ClientSampleId : PR132-S08-013038-20251017



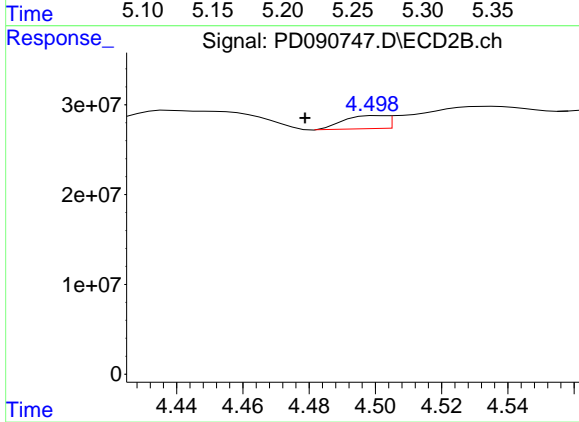
#23 Chlordane-1

R.T.: 3.894 min
 Delta R.T.: -0.003 min
 Response: 110135309
 Conc: 88.37 ng/ml



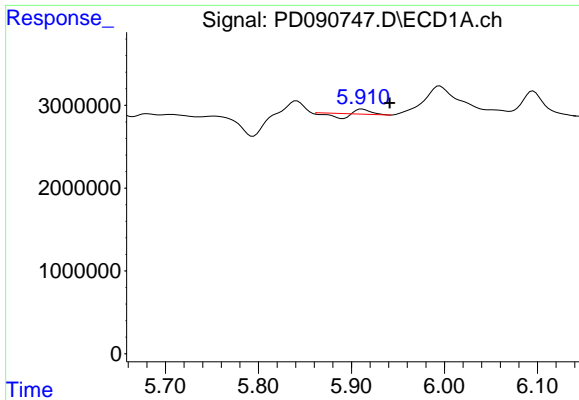
#24 Chlordane-2

R.T.: 5.253 min
 Delta R.T.: 0.017 min
 Response: 2269168
 Conc: 11.75 ng/ml



#24 Chlordane-2

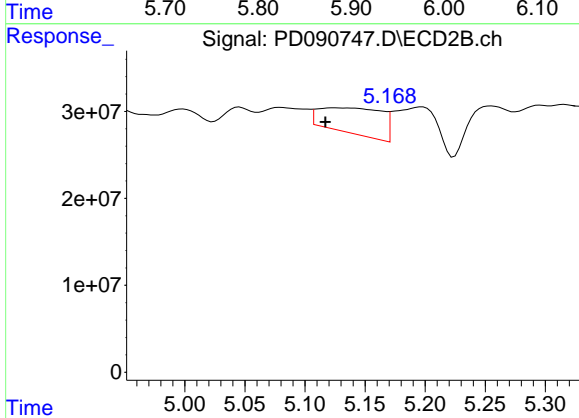
R.T.: 4.501 min
 Delta R.T.: 0.022 min
 Response: 12696898
 Conc: 9.73 ng/ml



#25 Chlordane-3

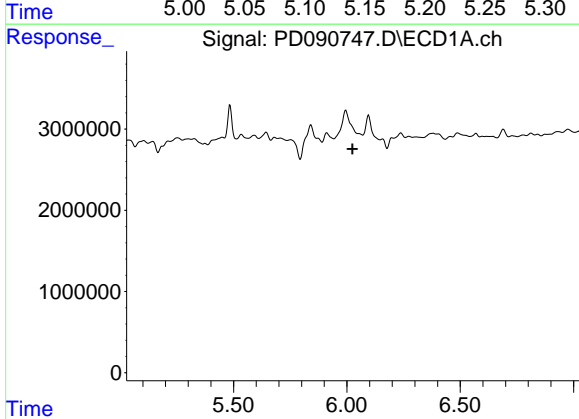
R.T.: 5.912 min
 Delta R.T.: -0.030 min
 Response: 128982
 Conc: 0.17 ng/ml

Instrument : ECD_D
 ClientSampleId : PR132-S08-013038-20251017



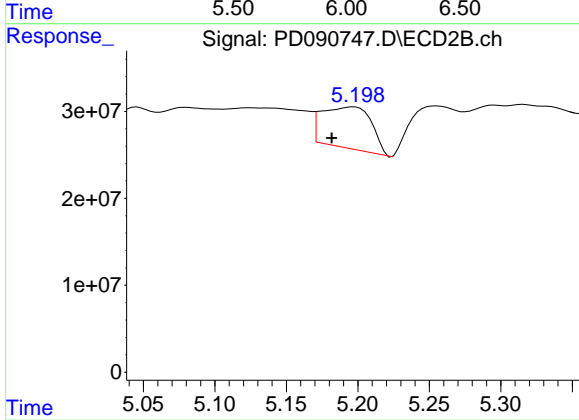
#25 Chlordane-3

R.T.: 5.125 min
 Delta R.T.: 0.008 min
 Response: 106334835
 Conc: 27.32 ng/ml



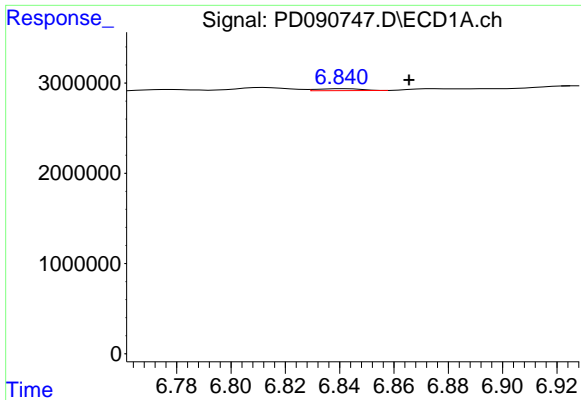
#26 Chlordane-4

R.T.: 0.000 min
 Exp R.T. : 6.025 min
 Response: 0
 Conc: N.D.



#26 Chlordane-4

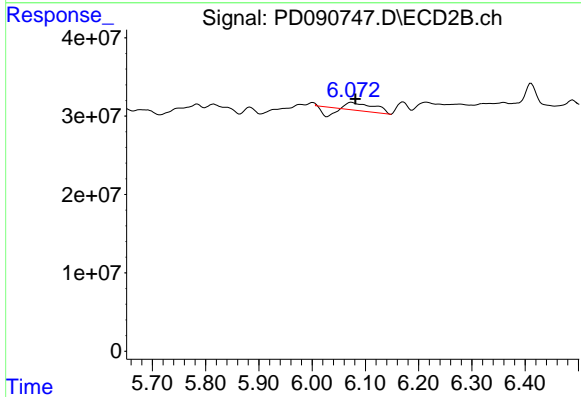
R.T.: 5.197 min
 Delta R.T.: 0.015 min
 Response: 114920025
 Conc: 34.39 ng/ml



#27 Chlordane-5

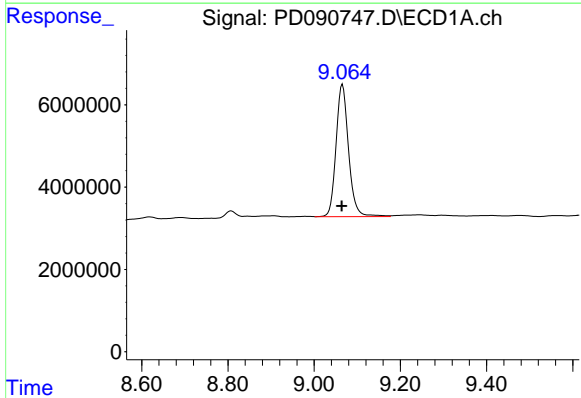
R.T.: 6.841 min
 Delta R.T.: -0.024 min
 Response: 243004
 Conc: 1.62 ng/ml

Instrument : ECD_D
 ClientSampleId : PR132-S08-013038-20251017



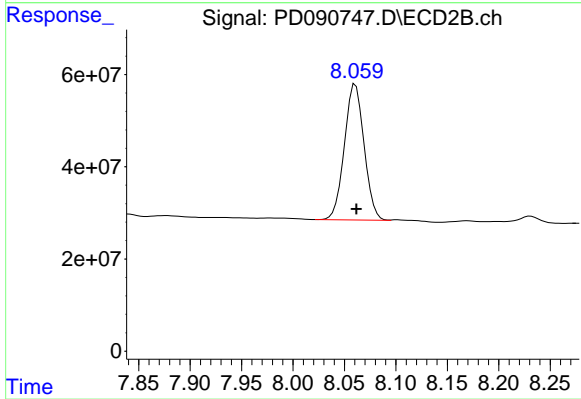
#27 Chlordane-5

R.T.: 6.074 min
 Delta R.T.: -0.007 min
 Response: 24153968
 Conc: 16.36 ng/ml



#28 Decachlorobiphenyl

R.T.: 9.066 min
 Delta R.T.: 0.002 min
 Response: 64655517
 Conc: 13.82 ng/ml



#28 Decachlorobiphenyl

R.T.: 8.061 min
 Delta R.T.: -0.001 min
 Response: 392874809
 Conc: 12.97 ng/ml