

Data Path : Z:\pestpcbsrv\HPCHEM1\ECD_D\Data\PD102125\
 Data File : PD090748.D
 Signal(s) : Signal #1: ECD1A.ch Signal #2: ECD2B.ch
 Acq On : 21 Oct 2025 20:46
 Operator : AR\AJ
 Sample : Q3393-04
 Misc :
 ALS Vial : 23 Sample Multiplier: 1

Instrument :
 ECD_D
 ClientSampleId :
 PR132-S06-000021-20251017

Integration File signal 1: autoint1.e
 Integration File signal 2: autoint2.e
 Quant Time: Oct 23 13:13:16 2025
 Quant Method : Z:\pestpcbsrv\HPCHEM1\ECD_D\Method\PD101725.M
 Quant Title : GC Extractables
 QLast Update : Fri Oct 17 17:43:28 2025
 Response via : Initial Calibration
 Integrator: ChemStation

Volume Inj. : 1 µl
 Signal #1 Phase : ZB-MR2 Signal #2 Phase: ZB-MR2
 Signal #1 Info : 30M x 0.32mm x0.5 Signal #2 Info : 30M x 0.32mm x 0.25µm

Compound	RT#1	RT#2	Resp#1	Resp#2	ng/ml	ng/ml
System Monitoring Compounds						
1) SA Tetrachlo...	3.544	2.873	93094396	571.6E6	29.894	19.196 #
28) SA Decachlor...	9.066	8.061	81308790	546.3E6	17.381	18.034
Target Compounds						
2) A alpha-BHC	0.000	3.371f	0	7642397	N.D.	0.150 #
3) MA gamma-BHC...	0.000	3.716	0	5598152	N.D.	0.118 #
4) MA Heptachlor	4.948f	4.067	3182961	26444866	0.569	0.593
5) MB Aldrin	5.257	4.364	936141	10914212	0.143	0.236 #
6) B beta-BHC	0.000	4.037f	0	59368242	N.D.	2.994 #
7) B delta-BHC	4.772	4.267	700072	17322360	0.104	0.363 #
8) B Heptachlo...	5.677	4.862	1214520	17372783	0.210	0.407 #
9) A Endosulfan I	6.094f	5.257f	2158879	51018446	0.390	1.295 #
10) B gamma-Chl...	5.910f	5.116	352855	40043797	0.059	0.891 #
11) B alpha-Chl...	5.995f	5.194	6101535	133.3E6	0.987	3.089 #
12) B 4,4'-DDE	6.190	5.365	19428377	92677923	3.647	2.114 #
13) MA Dieldrin	6.345	5.502	109502	98130238	0.019	2.221 #
14) MA Endrin	6.568	5.785	1411132	-5145053	0.285	N.D. #
17) MA 4,4'-DDT	7.023	6.170	766860	34205538	0.187	0.975 #
18) B Endrin al...	6.943f	6.269f	753187	6545849	0.206	0.236
19) B Endosulfa...	0.000	6.471	0	5044367	N.D.	0.141 #
20) A Methoxychlor	0.000	6.727f	0	17669783	N.D.	1.014 #
21) B Endrin ke...	7.611	6.960f	1716774	13174343	0.353	0.349
22) Mirex	0.000	7.180	0	5761261	N.D.	0.224 #
23) Chlordane-1	4.709	3.893	273663	138.1E6	1.448	110.825 #
24) Chlordane-2	5.257f	4.497	936141	7749505	4.847	5.940
25) Chlordane-3	0.000	5.116	0	40043797	N.D.	10.290 #
26) Chlordane-4	0.000	5.194	0	133.3E6	N.D.	39.883 #

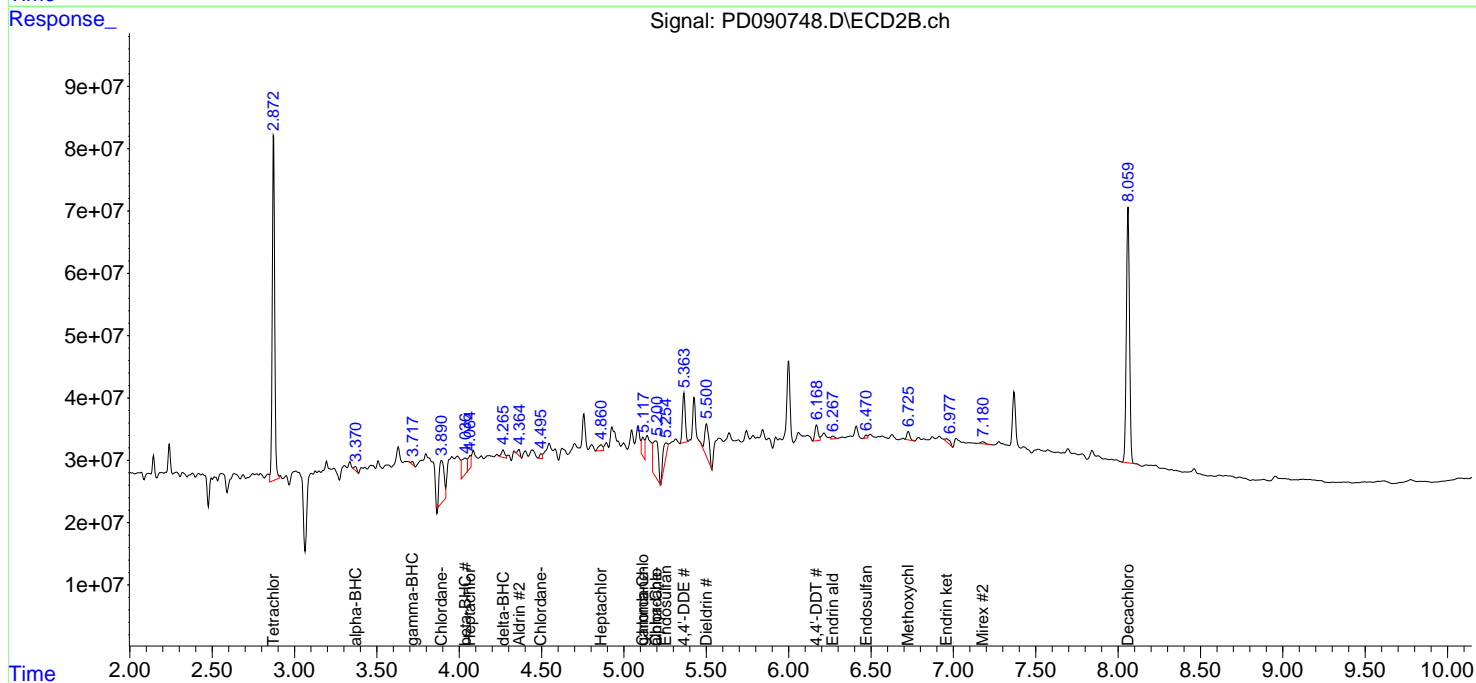
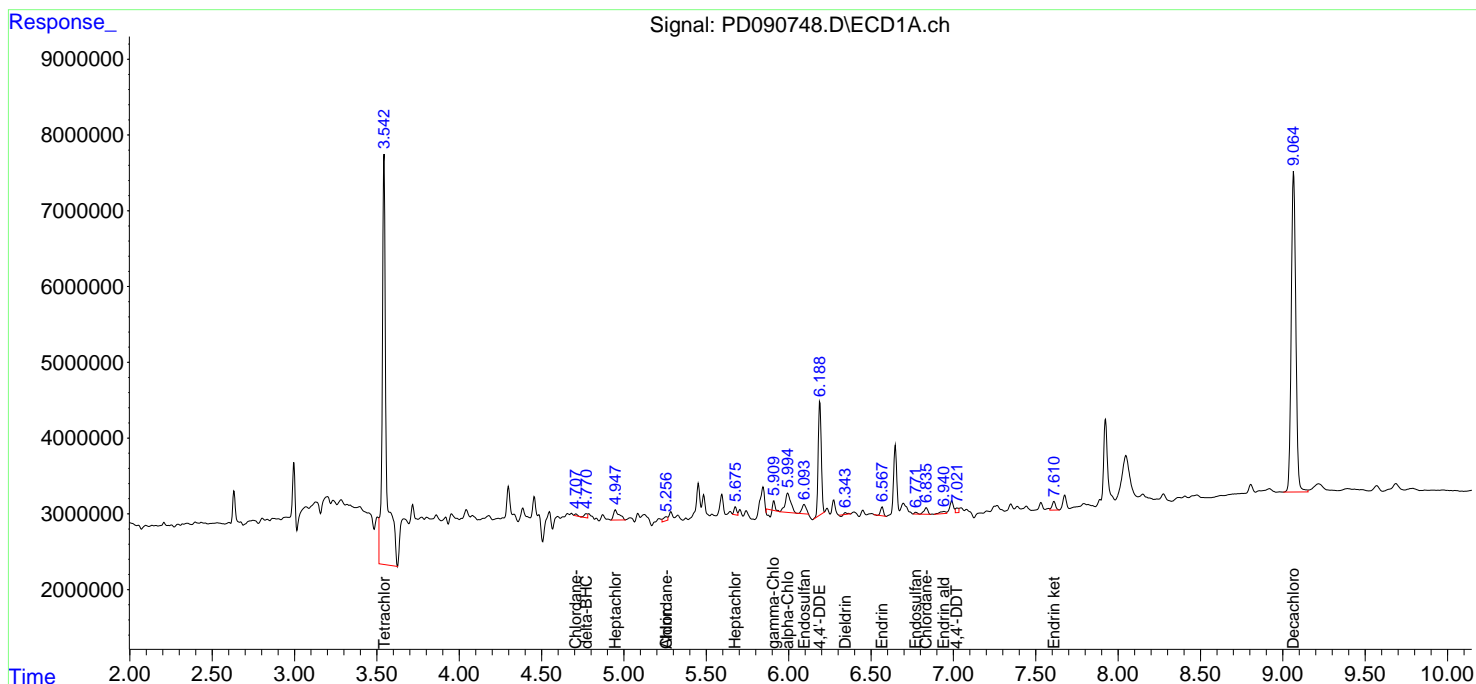
(f)=RT Delta > 1/2 Window (#)=Amounts differ by > 25% (m)=manual int.

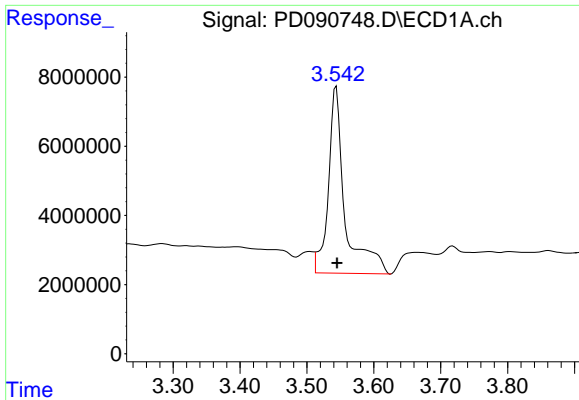
Data Path : Z:\pestpcbsrv\HPCHEM1\ECD_D\Data\PD102125\
 Data File : PD090748.D
 Signal(s) : Signal #1: ECD1A.ch Signal #2: ECD2B.ch
 Acq On : 21 Oct 2025 20:46
 Operator : AR\AJ
 Sample : Q3393-04
 Misc :
 ALS Vial : 23 Sample Multiplier: 1

Instrument :
 ECD_D
 ClientSampleId :
 PR132-S06-000021-20251017

Integration File signal 1: autoint1.e
 Integration File signal 2: autoint2.e
 Quant Time: Oct 23 13:13:16 2025
 Quant Method : Z:\pestpcbsrv\HPCHEM1\ECD_D\Method\PD101725.M
 Quant Title : GC Extractables
 QLast Update : Fri Oct 17 17:43:28 2025
 Response via : Initial Calibration
 Integrator: ChemStation

Volume Inj. : 1 µl
 Signal #1 Phase : ZB-MR1 Signal #2 Phase: ZB-MR2
 Signal #1 Info : 30M x 0.32mm x0.5 Signal #2 Info : 30M x 0.32mm x 0.25µm

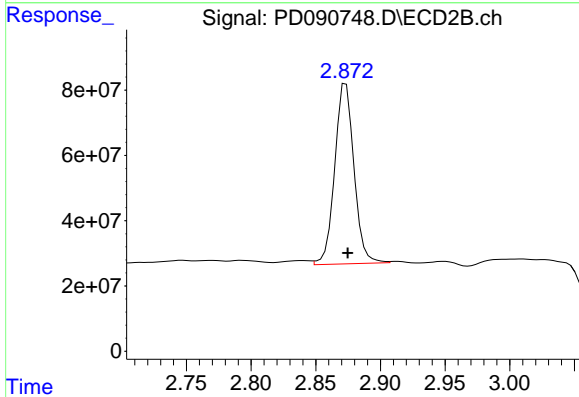




#1 Tetrachloro-m-xylene

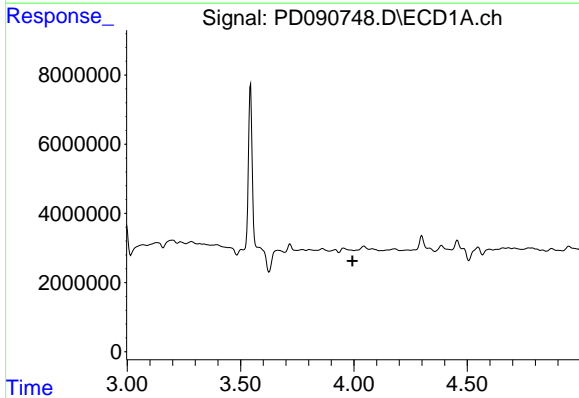
R.T.: 3.544 min
 Delta R.T.: -0.001 min
 Response: 93094396
 Conc: 29.89 ng/ml

Instrument :
 ECD_D
 ClientSampleId :
 PR132-S06-000021-20251017



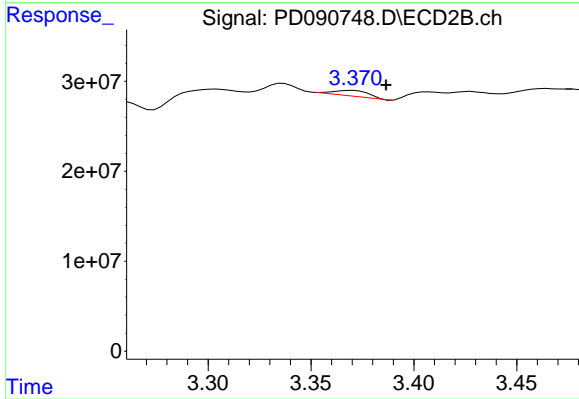
#1 Tetrachloro-m-xylene

R.T.: 2.873 min
 Delta R.T.: -0.001 min
 Response: 571599898
 Conc: 19.20 ng/ml



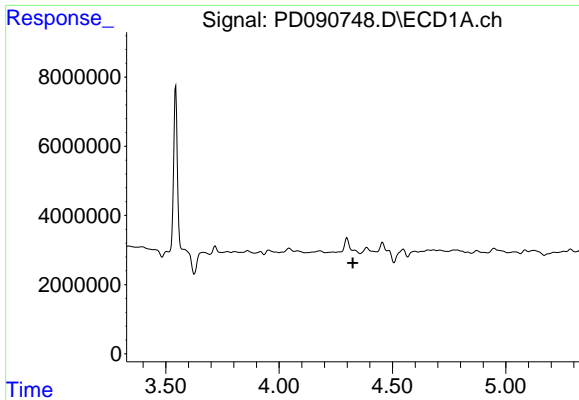
#2 alpha-BHC

R.T.: 0.000 min
 Exp R.T. : 3.994 min
 Response: 0
 Conc: N.D.



#2 alpha-BHC

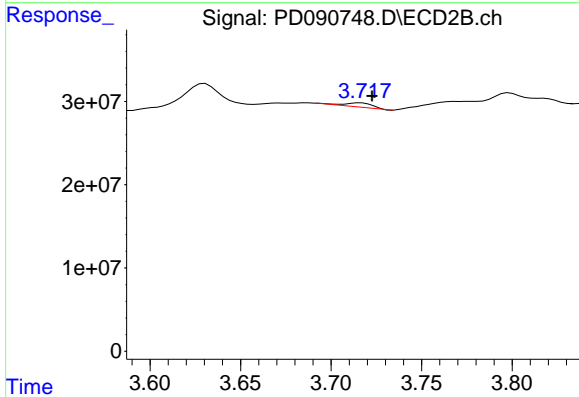
R.T.: 3.371 min
 Delta R.T.: -0.016 min
 Response: 7642397
 Conc: 0.15 ng/ml



#3 gamma-BHC (Lindane)

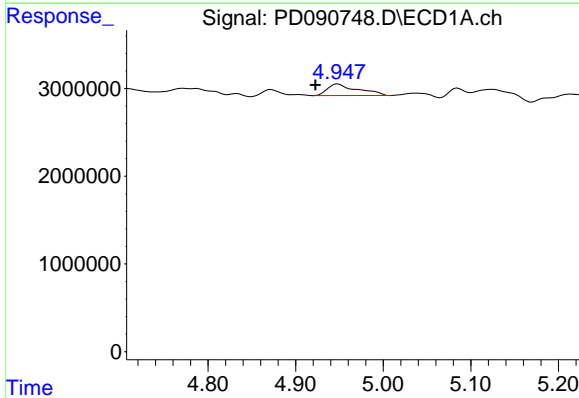
R.T.: 0.000 min
 Exp R.T.: 4.325 min
 Response: 0
 Conc: N.D.

Instrument :
 ECD_D
 ClientSampleId :
 PR132-S06-000021-20251017



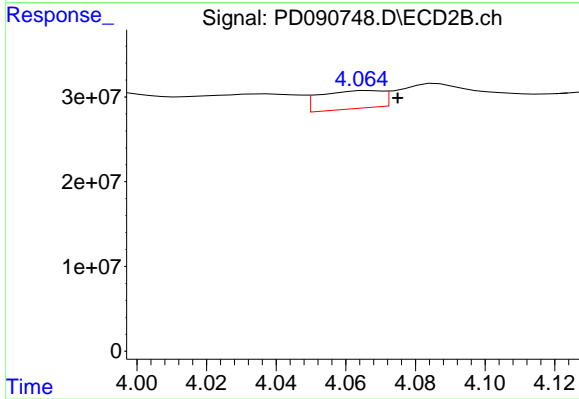
#3 gamma-BHC (Lindane)

R.T.: 3.716 min
 Delta R.T.: -0.006 min
 Response: 5598152
 Conc: 0.12 ng/ml



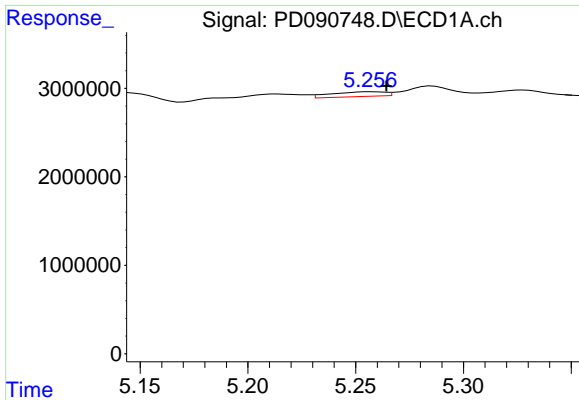
#4 Heptachlor

R.T.: 4.948 min
 Delta R.T.: 0.026 min
 Response: 3182961
 Conc: 0.57 ng/ml



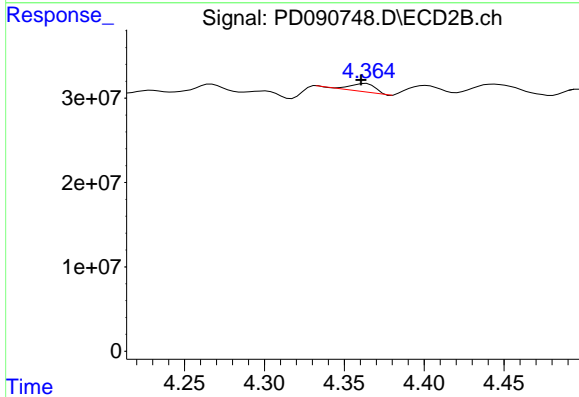
#4 Heptachlor

R.T.: 4.067 min
 Delta R.T.: -0.008 min
 Response: 26444866
 Conc: 0.59 ng/ml

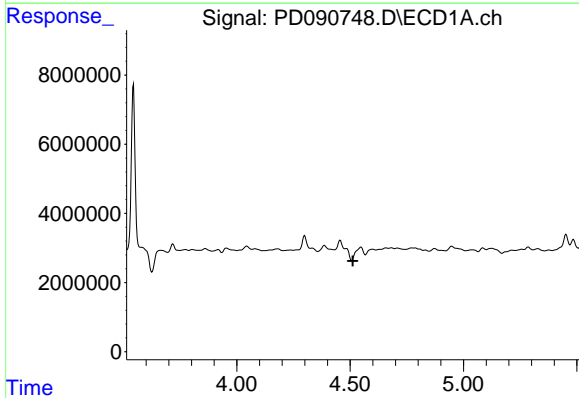


#5 Aldrin
 R.T.: 5.257 min
 Delta R.T.: -0.007 min
 Response: 936141
 Conc: 0.14 ng/ml

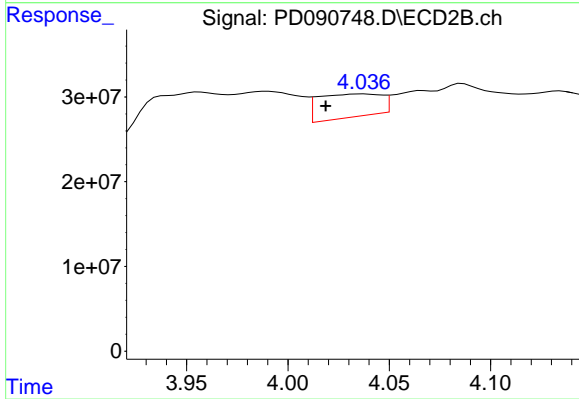
Instrument :
 ECD_D
 ClientSampleId :
 PR132-S06-000021-20251017



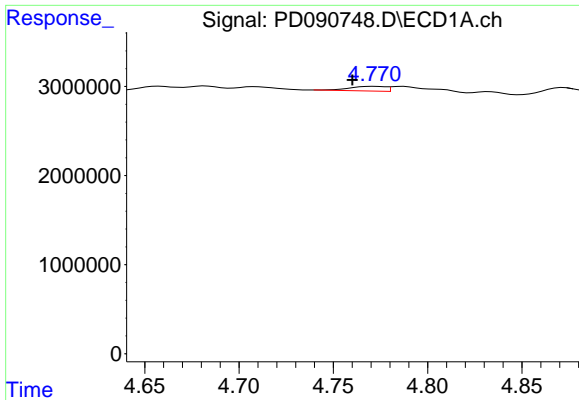
#5 Aldrin
 R.T.: 4.364 min
 Delta R.T.: 0.003 min
 Response: 10914212
 Conc: 0.24 ng/ml



#6 beta-BHC
 R.T.: 0.000 min
 Exp R.T. : 4.512 min
 Response: 0
 Conc: N.D.



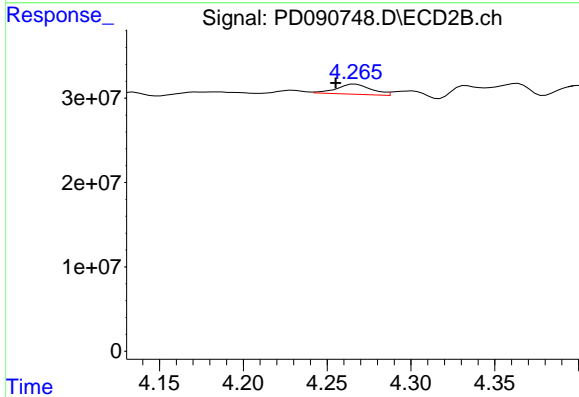
#6 beta-BHC
 R.T.: 4.037 min
 Delta R.T.: 0.018 min
 Response: 59368242
 Conc: 2.99 ng/ml



#7 delta-BHC

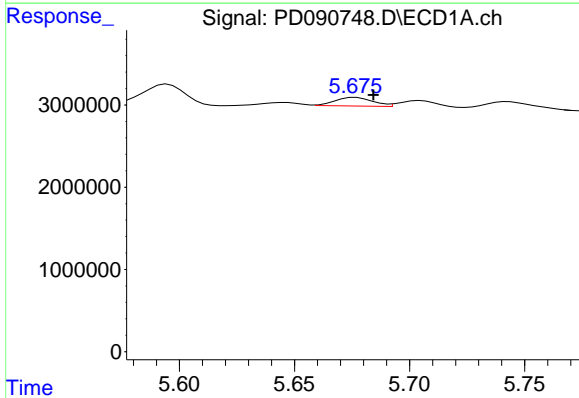
R.T.: 4.772 min
 Delta R.T.: 0.012 min
 Response: 700072
 Conc: 0.10 ng/ml

Instrument : ECD_D
 ClientSampleId : PR132-S06-000021-20251017



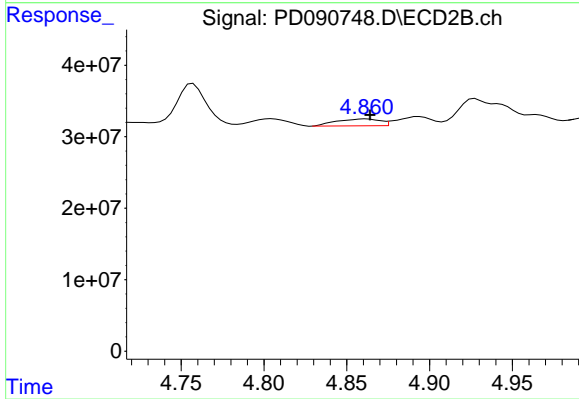
#7 delta-BHC

R.T.: 4.267 min
 Delta R.T.: 0.012 min
 Response: 17322360
 Conc: 0.36 ng/ml



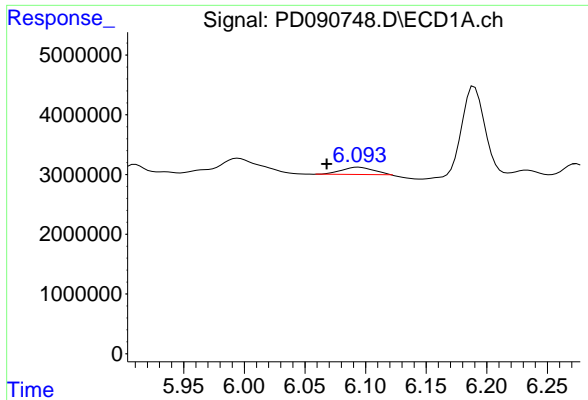
#8 Heptachlor epoxide

R.T.: 5.677 min
 Delta R.T.: -0.008 min
 Response: 1214520
 Conc: 0.21 ng/ml



#8 Heptachlor epoxide

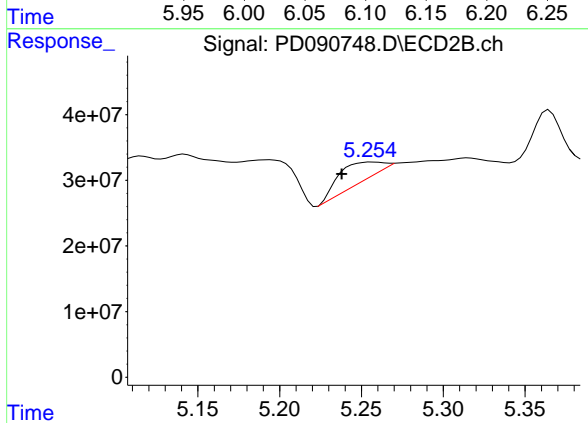
R.T.: 4.862 min
 Delta R.T.: -0.002 min
 Response: 17372783
 Conc: 0.41 ng/ml



#9 Endosulfan I

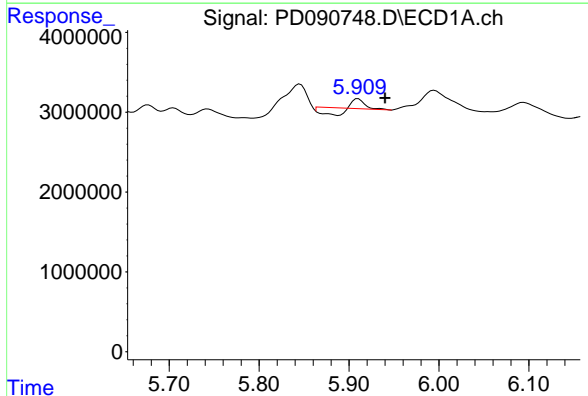
R.T.: 6.094 min
 Delta R.T.: 0.026 min
 Response: 2158879
 Conc: 0.39 ng/ml

Instrument : ECD_D
 ClientSampleId : PR132-S06-000021-20251017



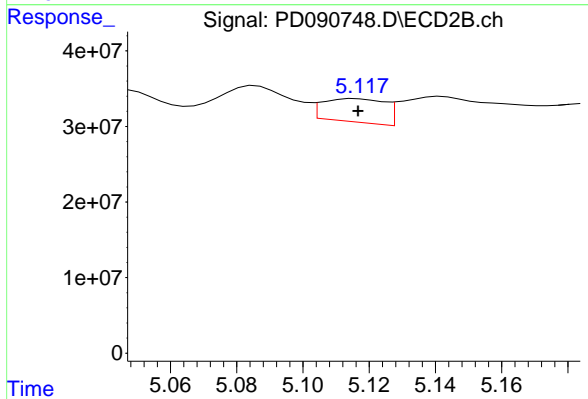
#9 Endosulfan I

R.T.: 5.257 min
 Delta R.T.: 0.019 min
 Response: 51018446
 Conc: 1.30 ng/ml



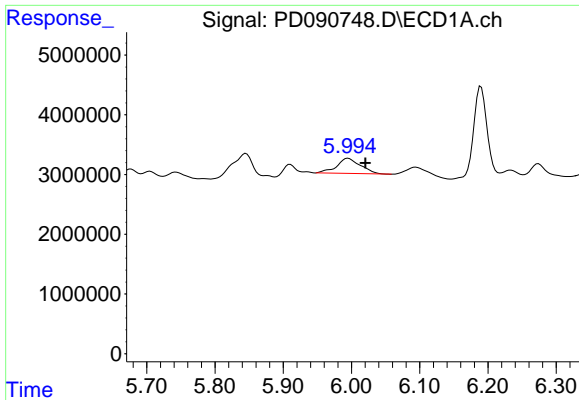
#10 gamma-Chlordane

R.T.: 5.910 min
 Delta R.T.: -0.030 min
 Response: 352855
 Conc: 0.06 ng/ml



#10 gamma-Chlordane

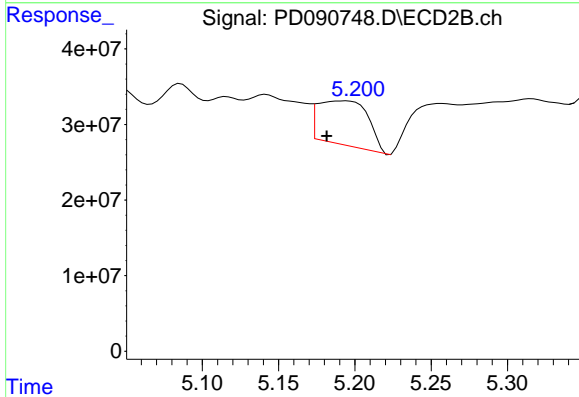
R.T.: 5.116 min
 Delta R.T.: 0.000 min
 Response: 40043797
 Conc: 0.89 ng/ml



#11 alpha-Chlordane

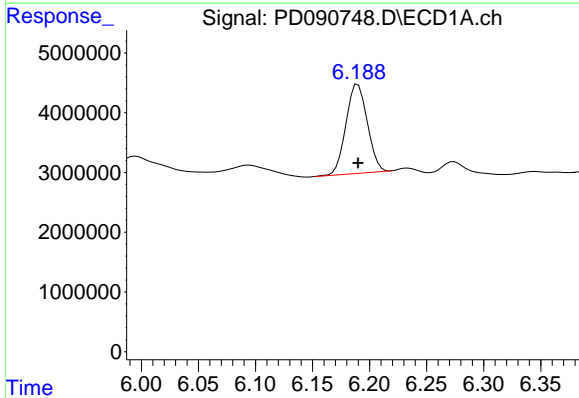
R.T.: 5.995 min
 Delta R.T.: -0.026 min
 Response: 6101535
 Conc: 0.99 ng/ml

Instrument : ECD_D
 ClientSampleId : PR132-S06-000021-20251017



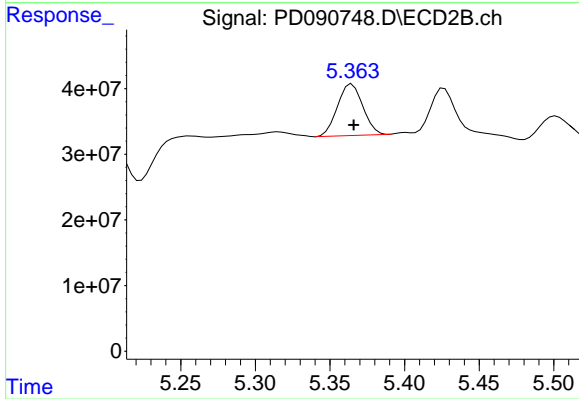
#11 alpha-Chlordane

R.T.: 5.194 min
 Delta R.T.: 0.013 min
 Response: 133259803
 Conc: 3.09 ng/ml



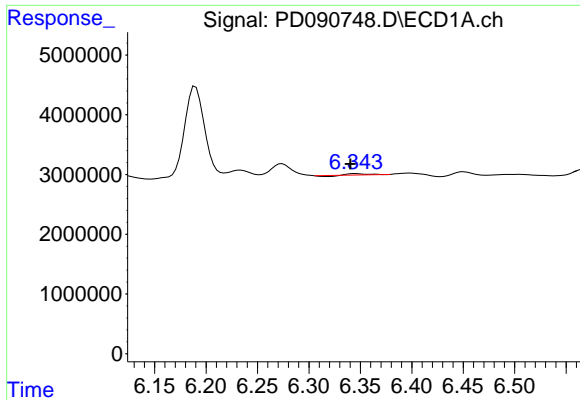
#12 4,4'-DDE

R.T.: 6.190 min
 Delta R.T.: 0.000 min
 Response: 19428377
 Conc: 3.65 ng/ml



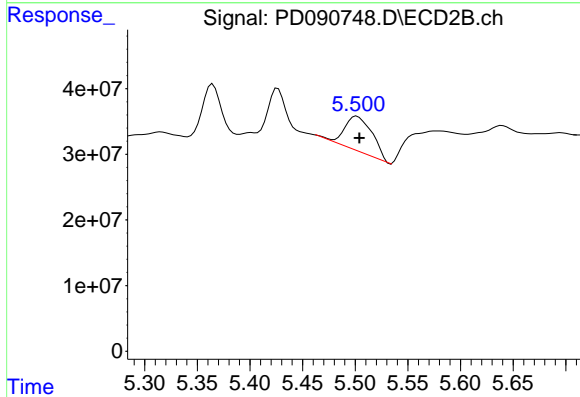
#12 4,4'-DDE

R.T.: 5.365 min
 Delta R.T.: -0.001 min
 Response: 92677923
 Conc: 2.11 ng/ml

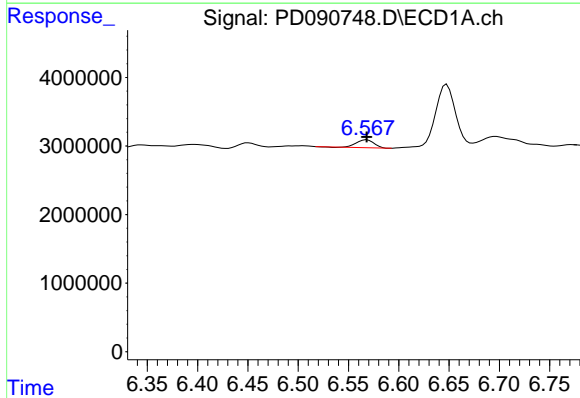


#13 Dieldrin
 R.T.: 6.345 min
 Delta R.T.: 0.004 min
 Response: 109502
 Conc: 0.02 ng/ml

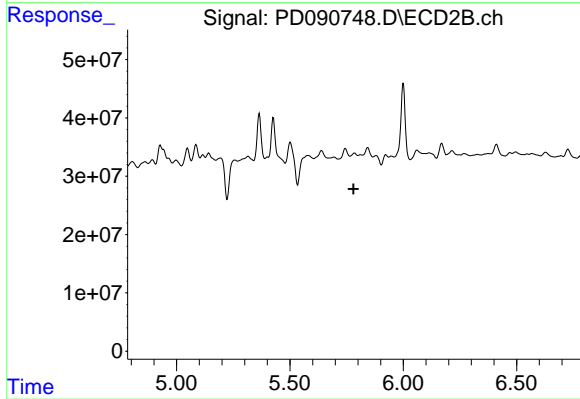
Instrument : ECD_D
 ClientSampleId : PR132-S06-000021-20251017



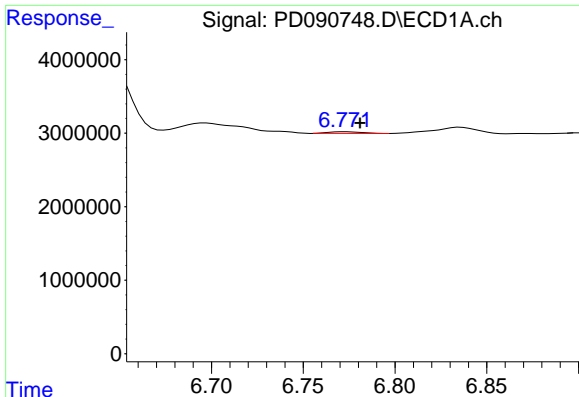
#13 Dieldrin
 R.T.: 5.502 min
 Delta R.T.: -0.002 min
 Response: 98130238
 Conc: 2.22 ng/ml



#14 Endrin
 R.T.: 6.568 min
 Delta R.T.: 0.000 min
 Response: 1411132
 Conc: 0.28 ng/ml



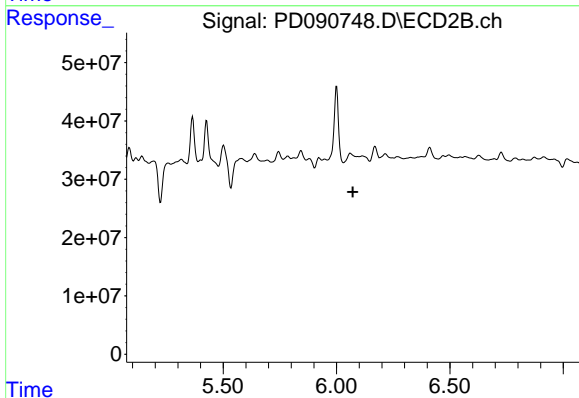
#14 Endrin
 R.T.: 5.785 min
 Delta R.T.: 0.005 min
 Response: -5145053
 Conc: N.D.



#15 Endosulfan II

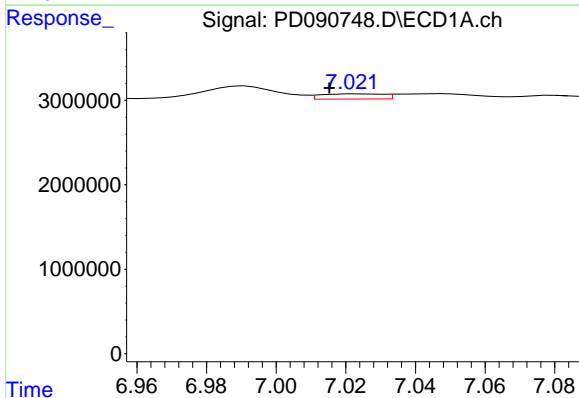
R.T.: 6.773 min
 Delta R.T.: -0.008 min
 Response: 284115
 Conc: 0.06 ng/ml

Instrument :
 ECD_D
 ClientSampleId :
 PR132-S06-000021-20251017



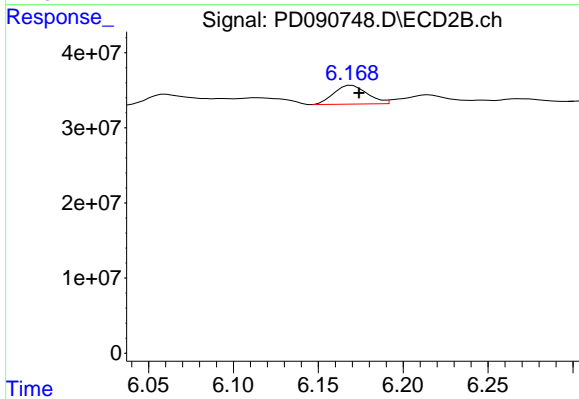
#15 Endosulfan II

R.T.: 6.061 min
 Delta R.T.: -0.011 min
 Response: -231219966
 Conc: N.D.



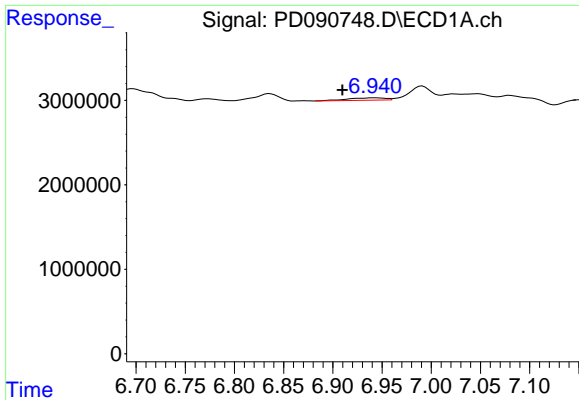
#17 4,4'-DDT

R.T.: 7.023 min
 Delta R.T.: 0.008 min
 Response: 766860
 Conc: 0.19 ng/ml



#17 4,4'-DDT

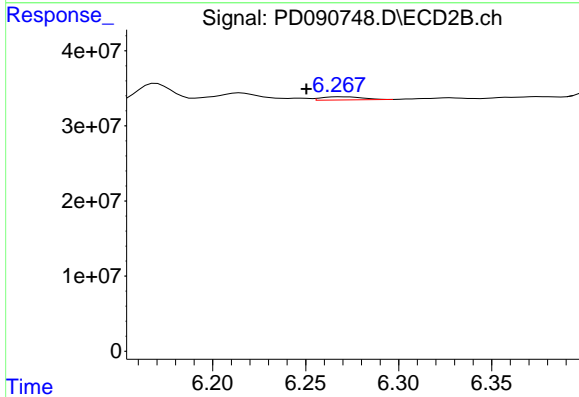
R.T.: 6.170 min
 Delta R.T.: -0.004 min
 Response: 34205538
 Conc: 0.98 ng/ml



#18 Endrin aldehyde

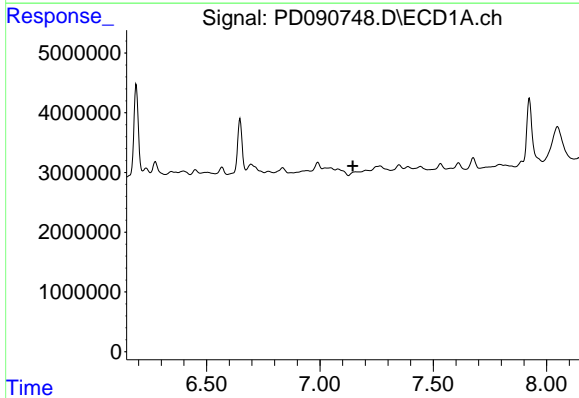
R.T.: 6.943 min
 Delta R.T.: 0.033 min
 Response: 753187
 Conc: 0.21 ng/ml

Instrument :
 ECD_D
 ClientSampleId :
 PR132-S06-000021-20251017



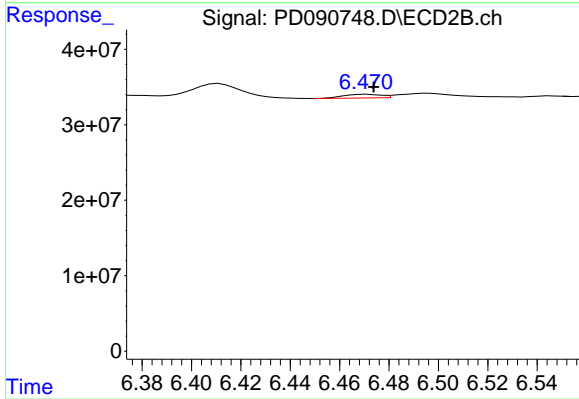
#18 Endrin aldehyde

R.T.: 6.269 min
 Delta R.T.: 0.019 min
 Response: 6545849
 Conc: 0.24 ng/ml



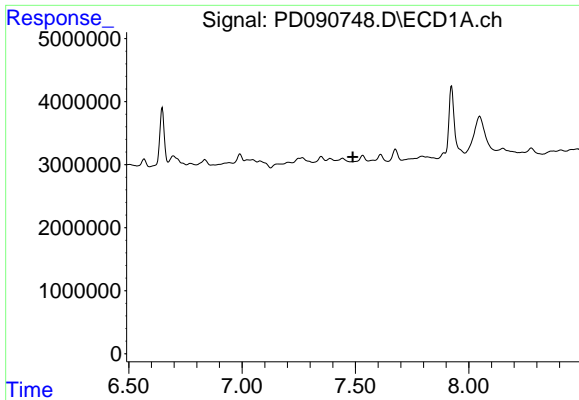
#19 Endosulfan Sulfate

R.T.: 0.000 min
 Exp R.T. : 7.145 min
 Response: 0
 Conc: N.D.



#19 Endosulfan Sulfate

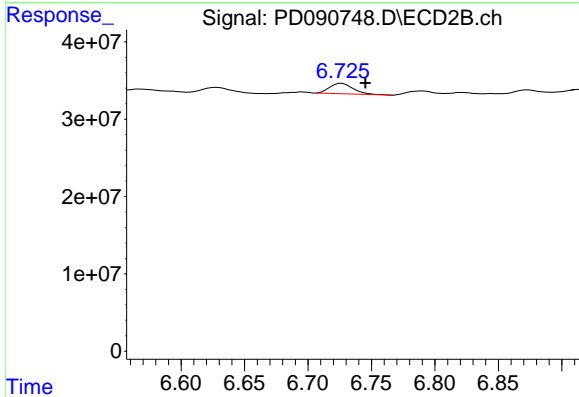
R.T.: 6.471 min
 Delta R.T.: -0.003 min
 Response: 5044367
 Conc: 0.14 ng/ml



#20 Methoxychlor

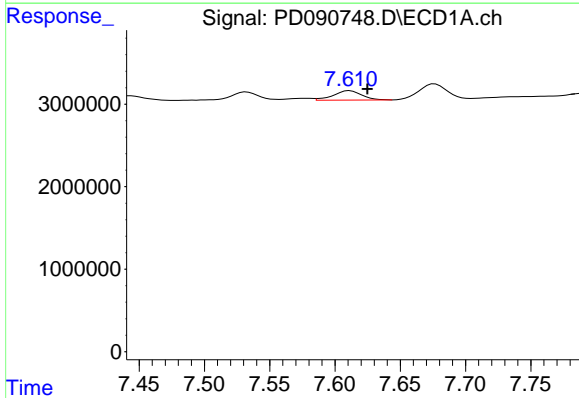
R.T.: 0.000 min
 Exp R.T.: 7.488 min
 Response: 0
 Conc: N.D.

Instrument :
 ECD_D
 ClientSampleId :
 PR132-S06-000021-20251017



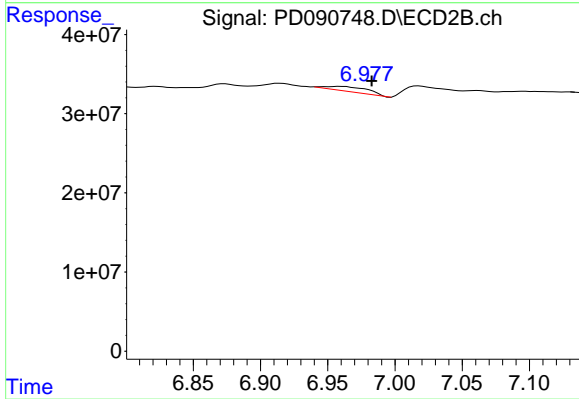
#20 Methoxychlor

R.T.: 6.727 min
 Delta R.T.: -0.018 min
 Response: 17669783
 Conc: 1.01 ng/ml



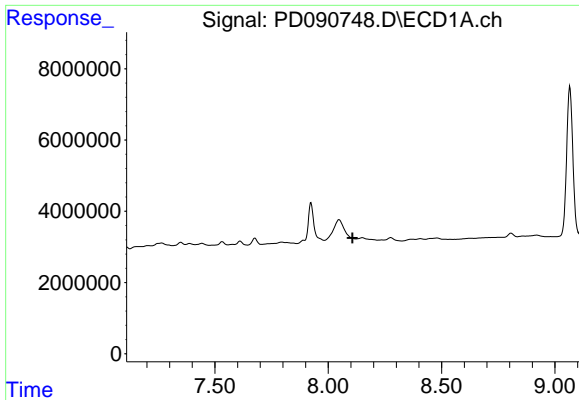
#21 Endrin ketone

R.T.: 7.611 min
 Delta R.T.: -0.013 min
 Response: 1716774
 Conc: 0.35 ng/ml



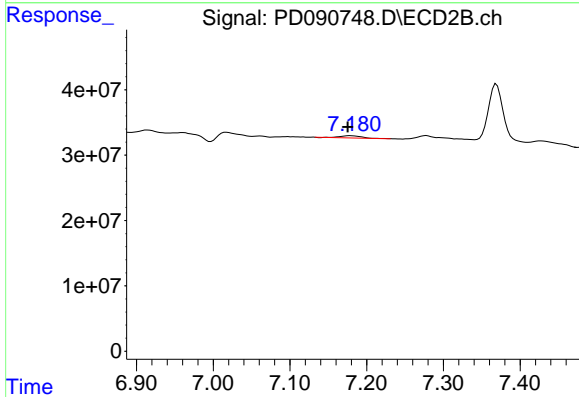
#21 Endrin ketone

R.T.: 6.960 min
 Delta R.T.: -0.023 min
 Response: 13174343
 Conc: 0.35 ng/ml

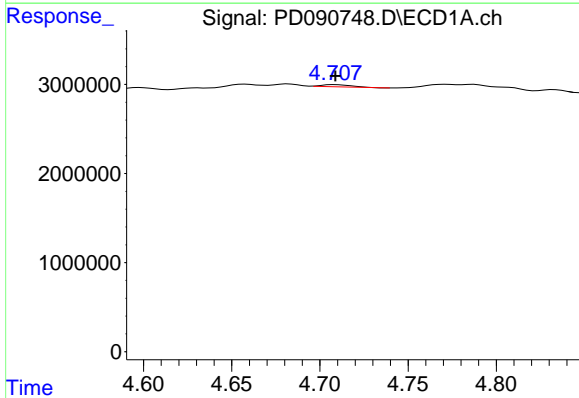


#22 Mirex
 R.T.: 0.000 min
 Exp R.T.: 8.107 min
 Response: 0
 Conc: N.D.

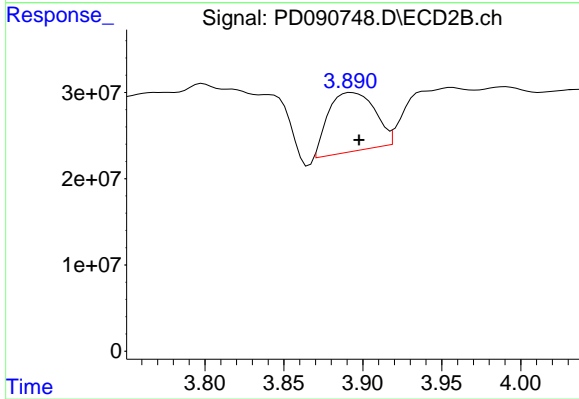
Instrument : ECD_D
 ClientSampleId : PR132-S06-000021-20251017



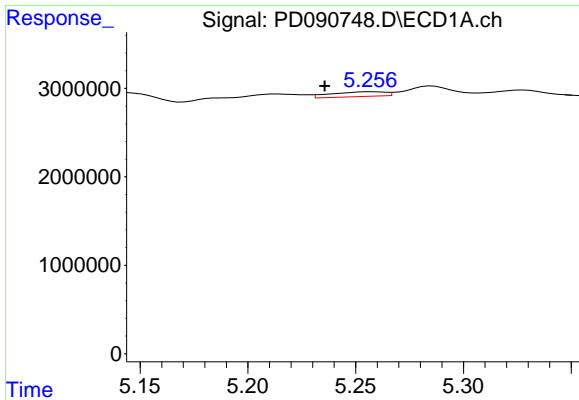
#22 Mirex
 R.T.: 7.180 min
 Delta R.T.: 0.004 min
 Response: 5761261
 Conc: 0.22 ng/ml



#23 Chlordane-1
 R.T.: 4.709 min
 Delta R.T.: 0.000 min
 Response: 273663
 Conc: 1.45 ng/ml



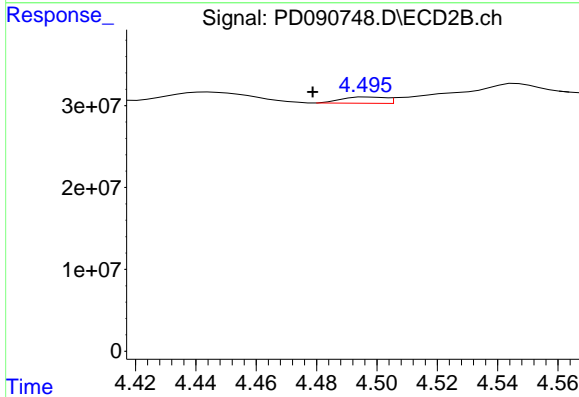
#23 Chlordane-1
 R.T.: 3.893 min
 Delta R.T.: -0.004 min
 Response: 138118747
 Conc: 110.83 ng/ml



#24 Chlordane-2

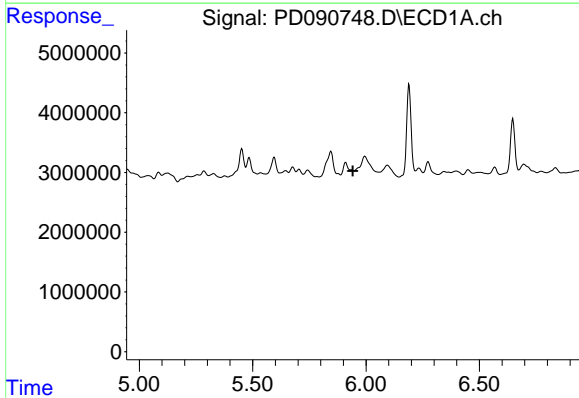
R.T.: 5.257 min
 Delta R.T.: 0.021 min
 Response: 936141
 Conc: 4.85 ng/ml

Instrument : ECD_D
 ClientSampleId : PR132-S06-000021-20251017



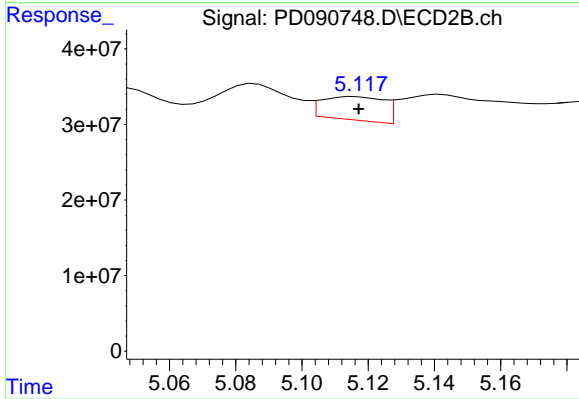
#24 Chlordane-2

R.T.: 4.497 min
 Delta R.T.: 0.018 min
 Response: 7749505
 Conc: 5.94 ng/ml



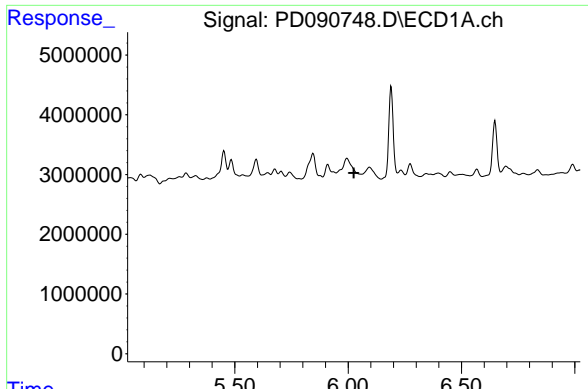
#25 Chlordane-3

R.T.: 0.000 min
 Exp R.T. : 5.941 min
 Response: 0
 Conc: N.D.



#25 Chlordane-3

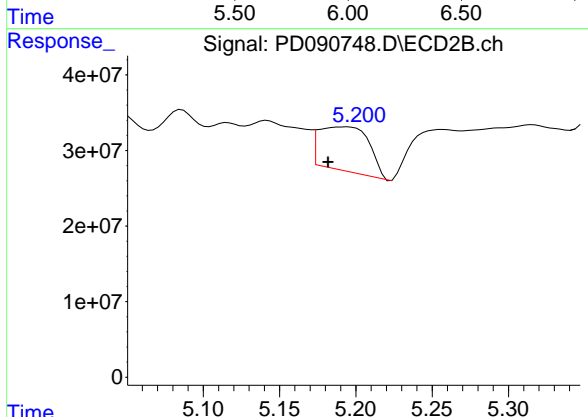
R.T.: 5.116 min
 Delta R.T.: -0.001 min
 Response: 40043797
 Conc: 10.29 ng/ml



#26 Chlordane-4

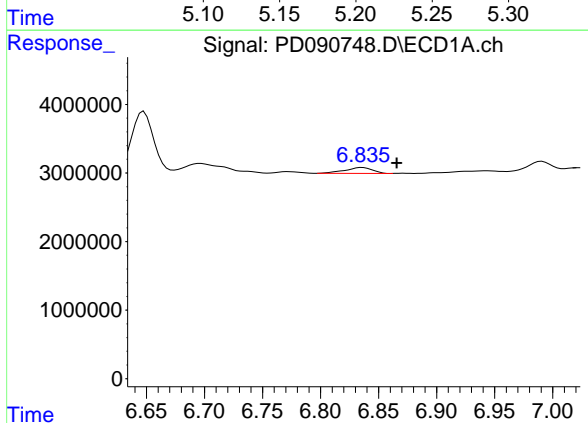
R.T.: 0.000 min
 Exp R.T.: 6.025 min
 Response: 0
 Conc: N.D.

Instrument :
 ECD_D
 ClientSampleId :
 PR132-S06-000021-20251017



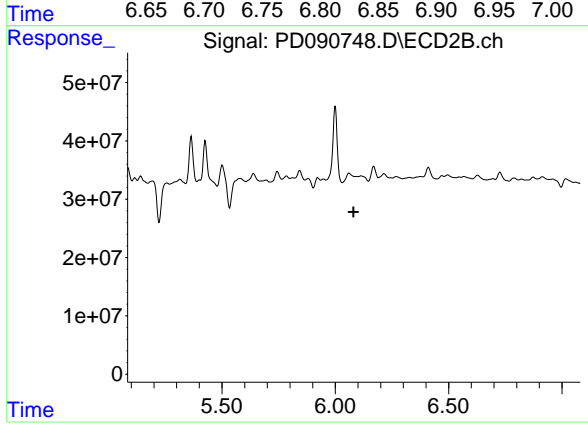
#26 Chlordane-4

R.T.: 5.194 min
 Delta R.T.: 0.013 min
 Response: 133259803
 Conc: 39.88 ng/ml



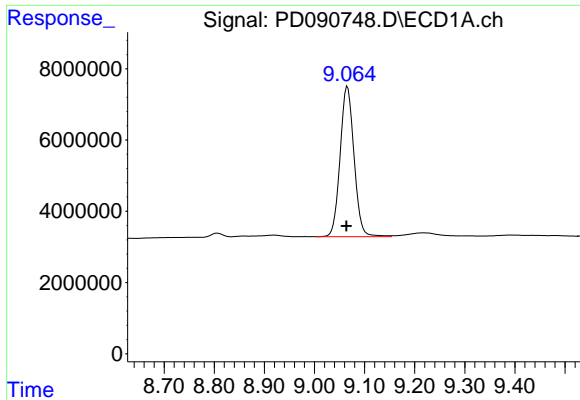
#27 Chlordane-5

R.T.: 6.836 min
 Delta R.T.: -0.030 min
 Response: 1411798
 Conc: 9.40 ng/ml



#27 Chlordane-5

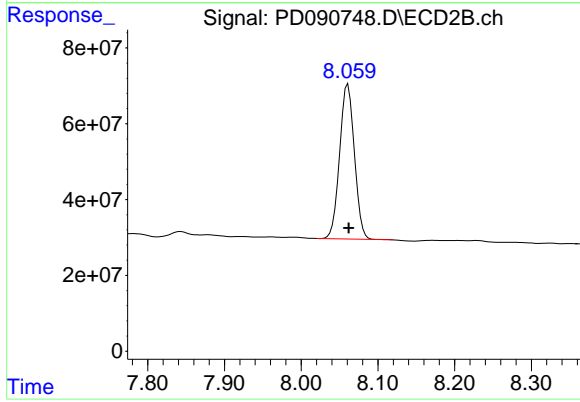
R.T.: 6.061 min
 Delta R.T.: -0.020 min
 Response: -231219966
 Conc: N.D.



#28 Decachlorobiphenyl

R.T.: 9.066 min
 Delta R.T.: 0.002 min
 Response: 81308790
 Conc: 17.38 ng/ml

Instrument :
 ECD_D
 ClientSampleId :
 PR132-S06-000021-20251017



#28 Decachlorobiphenyl

R.T.: 8.061 min
 Delta R.T.: 0.000 min
 Response: 546269576
 Conc: 18.03 ng/ml