

Data Path : Z:\pestpcbsrv\HPCHEM1\ECD\_D\Data\PD102125\  
 Data File : PD090749.D  
 Signal(s) : Signal #1: ECD1A.ch Signal #2: ECD2B.ch  
 Acq On : 21 Oct 2025 21:00  
 Operator : AR\AJ  
 Sample : Q3393-05  
 Misc :  
 ALS Vial : 24 Sample Multiplier: 1

Instrument :  
 ECD\_D  
 ClientSampleId :  
 PR132-S08-000013-20251017

Integration File signal 1: autoint1.e  
 Integration File signal 2: autoint2.e  
 Quant Time: Oct 23 13:13:26 2025  
 Quant Method : Z:\pestpcbsrv\HPCHEM1\ECD\_D\Method\PD101725.M  
 Quant Title : GC Extractables  
 QLast Update : Fri Oct 17 17:43:28 2025  
 Response via : Initial Calibration  
 Integrator: ChemStation

Volume Inj. : 1 µl  
 Signal #1 Phase : ZB-MR2 Signal #2 Phase: ZB-MR2  
 Signal #1 Info : 30M x 0.32mm x0.5 Signal #2 Info : 30M x 0.32mm x 0.25µm

	Compound	RT#1	RT#2	Resp#1	Resp#2	ng/ml	ng/ml
-----							
System Monitoring Compounds							
1)	SA Tetrachlo...	3.544	2.873	69657263	593.2E6	22.368	19.922
28)	SA Decachlor...	9.066	8.061	76962732	520.3E6	16.452	17.175
Target Compounds							
2)	A alpha-BHC	0.000	3.370f	0	7379926	N.D.	0.144 #
3)	MA gamma-BHC...	0.000	3.713	0	16845435	N.D.	0.357 #
4)	MA Heptachlor	4.948f	4.086	2396530	224.2E6	0.429	5.027 #
5)	MB Aldrin	5.286f	4.363	4372253	25117580	0.668	0.542
6)	B beta-BHC	4.543f	0.000	7818537	0	2.985	N.D. #
7)	B delta-BHC	4.790f	4.267	2338326	38626148	0.346	0.809 #
8)	B Heptachlo...	5.677	4.861	2081355	26575716	0.360	0.623 #
9)	A Endosulfan I	6.096f	5.261f	3309722	77005836	0.598	1.955 #
10)	B gamma-Chl...	5.964f	5.117	811972	53576383	0.137	1.192 #
11)	B alpha-Chl...	5.995f	5.188	3325336	214.3E6	0.538	4.967 #
12)	B 4,4'-DDE	6.191	5.365	15065687	83180794	2.828	1.897 #
13)	MA Dieldrin	6.343	5.502	258853	153.6E6	0.044	3.477 #
14)	MA Endrin	6.568	5.784	1707827	-7564362	0.345	N.D. #
17)	MA 4,4'-DDT	7.026	6.170	1609577	32306876	0.392	0.921 #
18)	B Endrin al...	6.943f	6.269f	1104886	7432254	0.302	0.268
19)	B Endosulfa...	7.151	6.471	-514971	3999948	N.D.	0.112
20)	A Methoxychlor	0.000	6.727f	0	16918263	N.D.	0.971 #
21)	B Endrin ke...	7.612	6.963f	2021758	20331578	0.416	0.539 #
22)	Mirex	0.000	7.181	0	800047	N.D.	0.031 #
23)	Chlordane-1	4.709	3.893	921699	179.3E6	4.877	143.880 #
24)	Chlordane-2	5.216	4.445f	3372113	25610528	17.460	19.632
25)	Chlordane-3	5.964f	5.117	811972	53576383	1.065	13.767 #
26)	Chlordane-4	0.000	5.188	0	214.3E6	N.D.	64.131 #

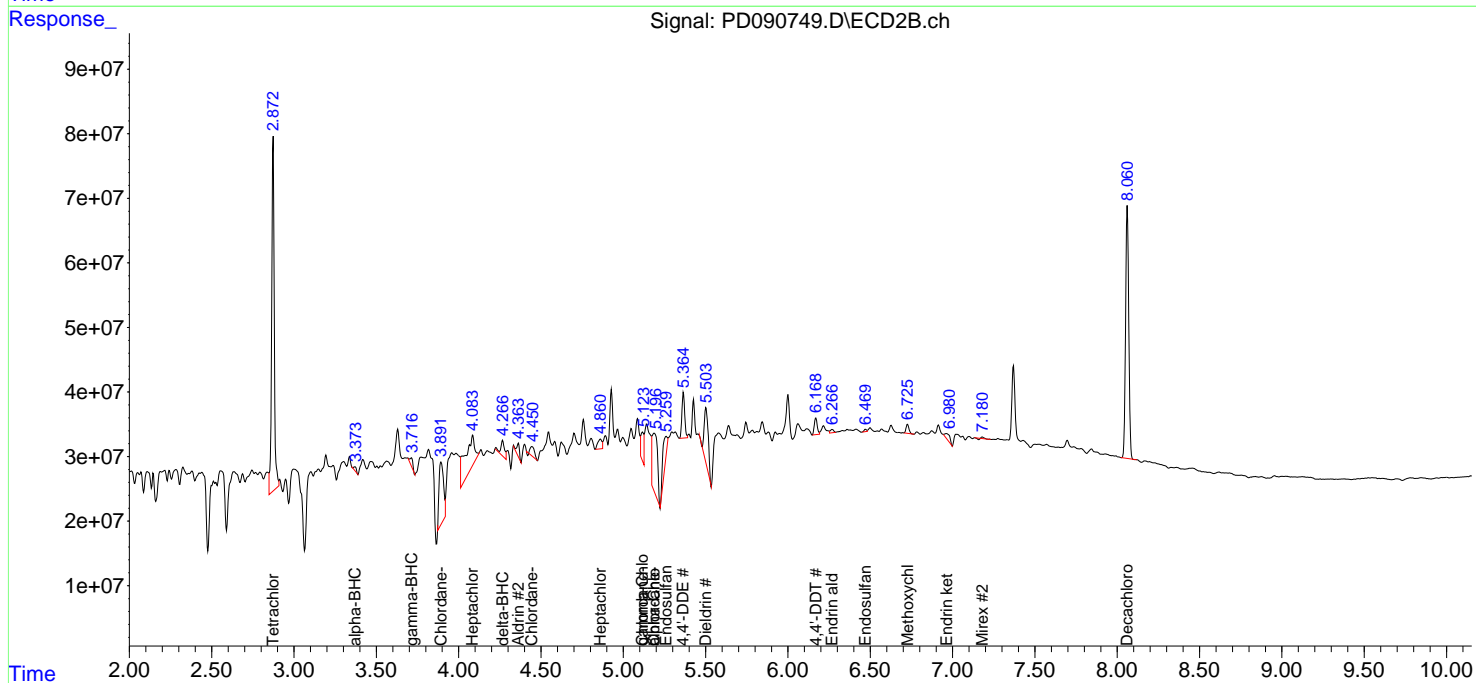
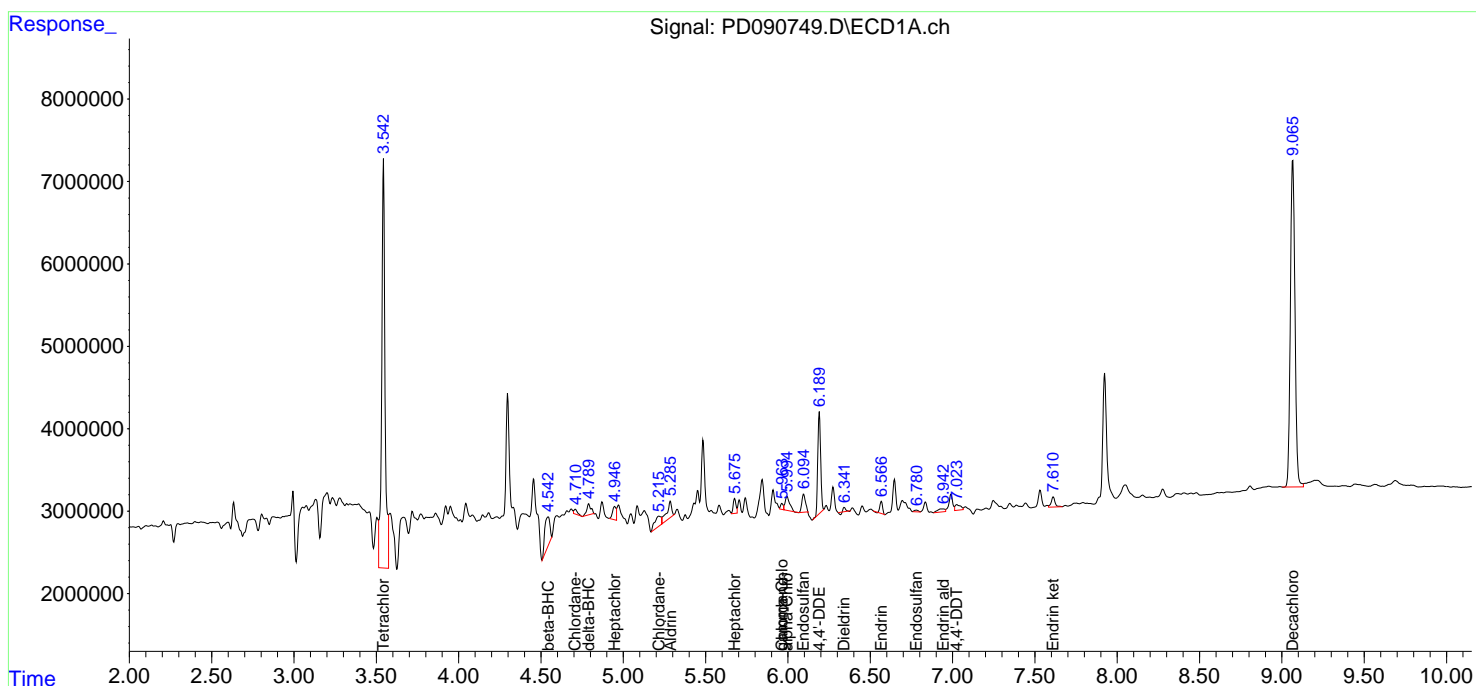
(f)=RT Delta > 1/2 Window (#)=Amounts differ by > 25% (m)=manual int.

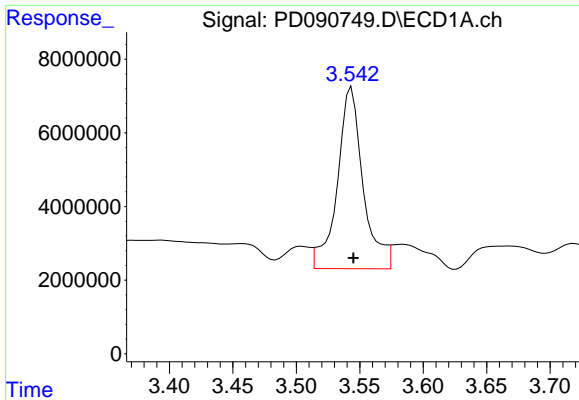
Data Path : Z:\pestpcbsrv\HPCHEM1\ECD\_D\Data\PD102125\  
 Data File : PD090749.D  
 Signal(s) : Signal #1: ECD1A.ch Signal #2: ECD2B.ch  
 Acq On : 21 Oct 2025 21:00  
 Operator : AR\AJ  
 Sample : Q3393-05  
 Misc :  
 ALS Vial : 24 Sample Multiplier: 1

Instrument :  
 ECD\_D  
 ClientSampleId :  
 PR132-S08-000013-20251017

Integration File signal 1: autoint1.e  
 Integration File signal 2: autoint2.e  
 Quant Time: Oct 23 13:13:26 2025  
 Quant Method : Z:\pestpcbsrv\HPCHEM1\ECD\_D\Method\PD101725.M  
 Quant Title : GC Extractables  
 QLast Update : Fri Oct 17 17:43:28 2025  
 Response via : Initial Calibration  
 Integrator: ChemStation

Volume Inj. : 1 µl  
 Signal #1 Phase : ZB-MR1 Signal #2 Phase: ZB-MR2  
 Signal #1 Info : 30M x 0.32mm x0.5 Signal #2 Info : 30M x 0.32mm x 0.25µm

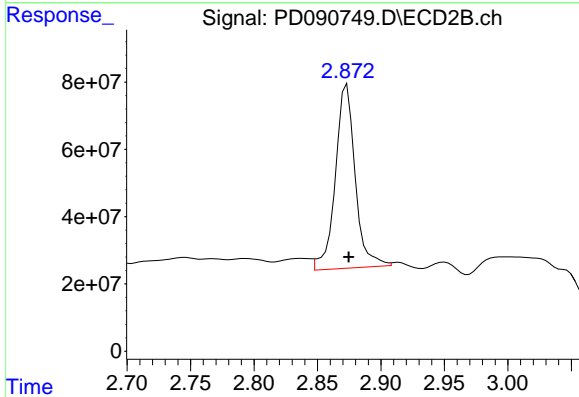




#1 Tetrachloro-m-xylene

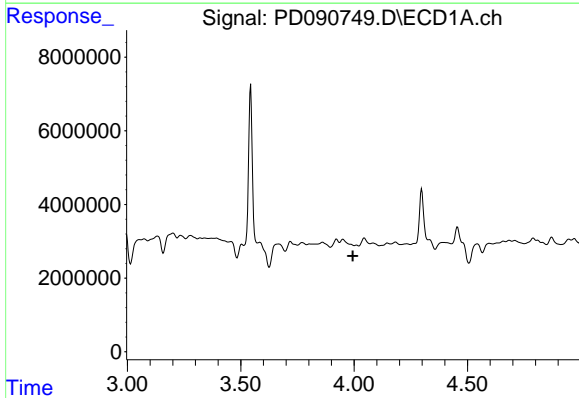
R.T.: 3.544 min  
 Delta R.T.: -0.001 min  
 Response: 69657263  
 Conc: 22.37 ng/ml

Instrument :  
 ECD\_D  
 ClientSampleId :  
 PR132-S08-000013-20251017



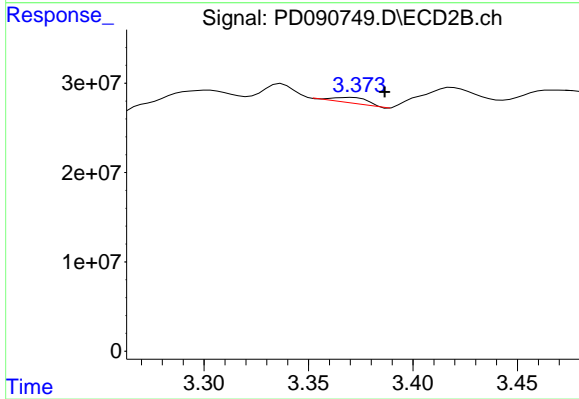
#1 Tetrachloro-m-xylene

R.T.: 2.873 min  
 Delta R.T.: -0.001 min  
 Response: 593207387  
 Conc: 19.92 ng/ml



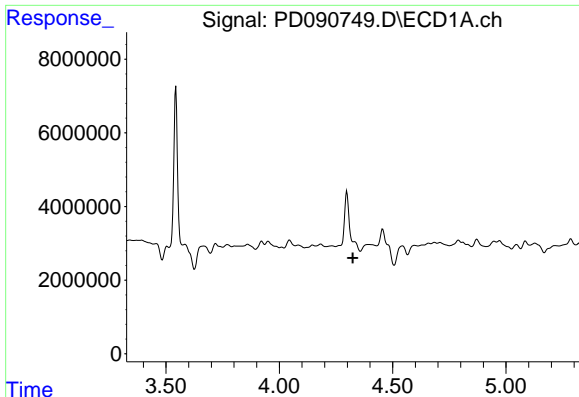
#2 alpha-BHC

R.T.: 0.000 min  
 Exp R.T. : 3.994 min  
 Response: 0  
 Conc: N.D.



#2 alpha-BHC

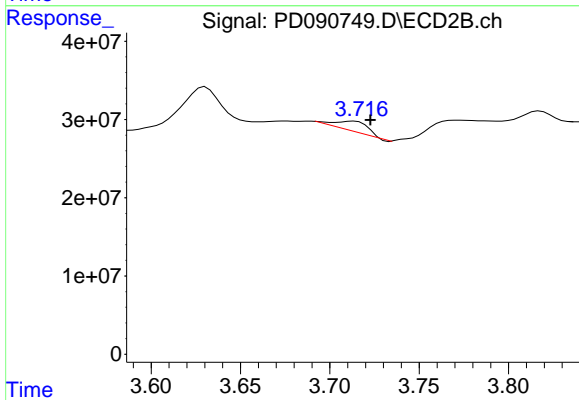
R.T.: 3.370 min  
 Delta R.T.: -0.016 min  
 Response: 7379926  
 Conc: 0.14 ng/ml



#3 gamma-BHC (Lindane)

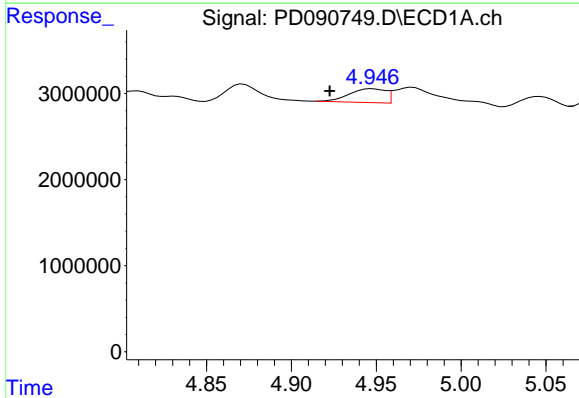
R.T.: 0.000 min  
Exp R.T.: 4.325 min  
Response: 0  
Conc: N.D.

Instrument :  
ECD\_D  
ClientSampleId :  
PR132-S08-000013-20251017



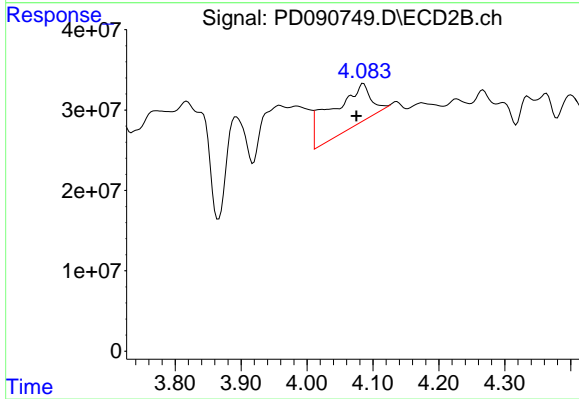
#3 gamma-BHC (Lindane)

R.T.: 3.713 min  
Delta R.T.: -0.009 min  
Response: 16845435  
Conc: 0.36 ng/ml



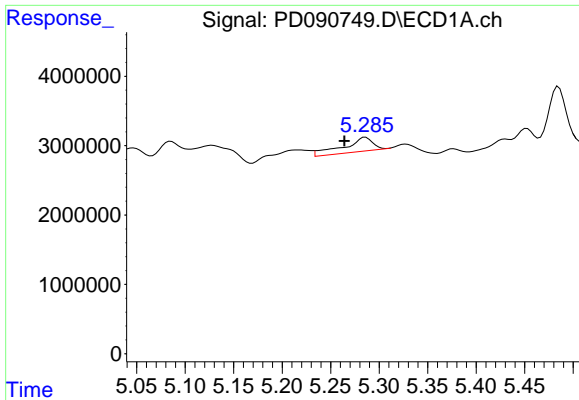
#4 Heptachlor

R.T.: 4.948 min  
Delta R.T.: 0.025 min  
Response: 2396530  
Conc: 0.43 ng/ml



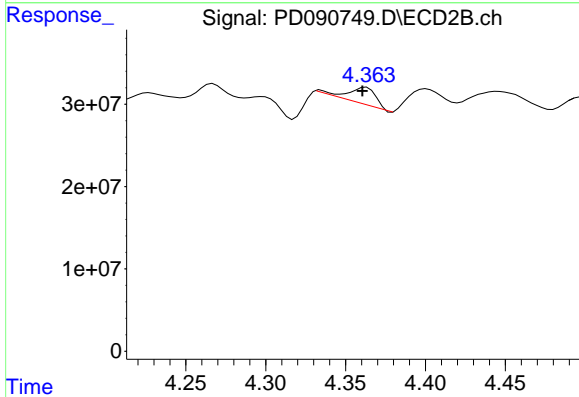
#4 Heptachlor

R.T.: 4.086 min  
Delta R.T.: 0.011 min  
Response: 224224135  
Conc: 5.03 ng/ml

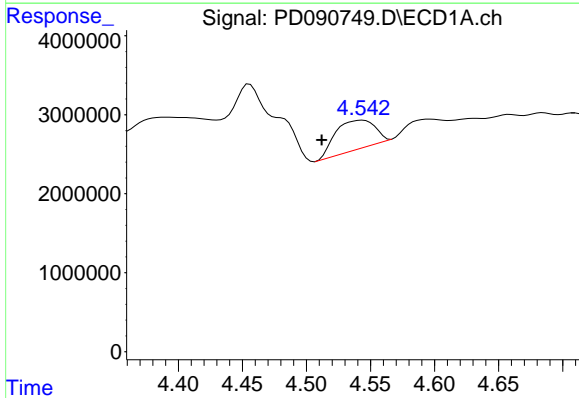


#5 Aldrin  
 R.T.: 5.286 min  
 Delta R.T.: 0.022 min  
 Response: 4372253  
 Conc: 0.67 ng/ml

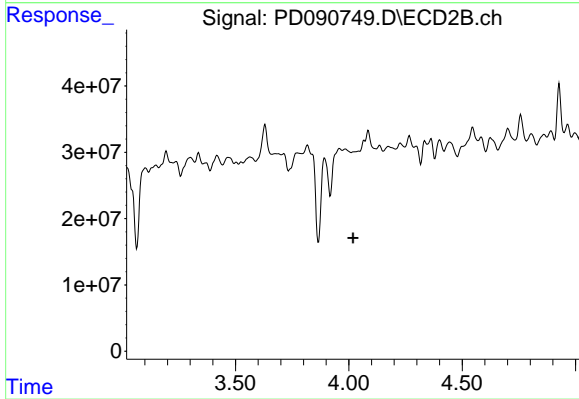
Instrument :  
 ECD\_D  
 ClientSampleId :  
 PR132-S08-000013-20251017



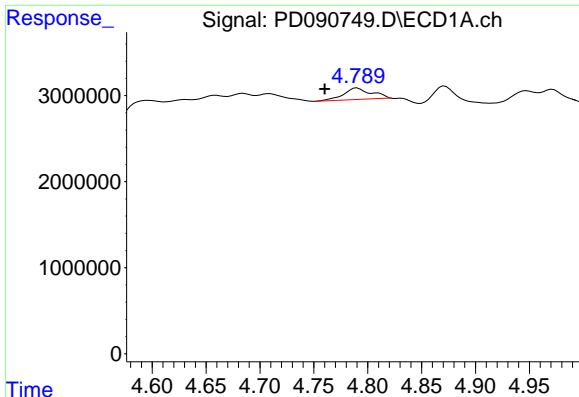
#5 Aldrin  
 R.T.: 4.363 min  
 Delta R.T.: 0.002 min  
 Response: 25117580  
 Conc: 0.54 ng/ml



#6 beta-BHC  
 R.T.: 4.543 min  
 Delta R.T.: 0.031 min  
 Response: 7818537  
 Conc: 2.98 ng/ml



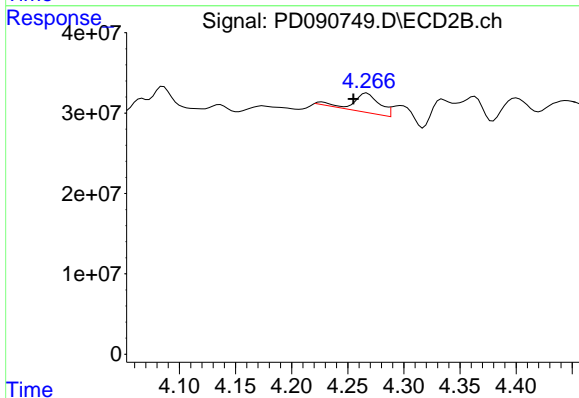
#6 beta-BHC  
 R.T.: 0.000 min  
 Exp R.T. : 4.019 min  
 Response: 0  
 Conc: N.D.



#7 delta-BHC

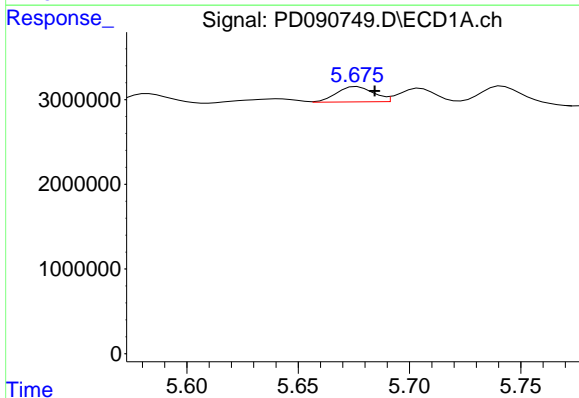
R.T.: 4.790 min  
 Delta R.T.: 0.030 min  
 Response: 2338326  
 Conc: 0.35 ng/ml

Instrument :  
 ECD\_D  
 ClientSampleId :  
 PR132-S08-000013-20251017



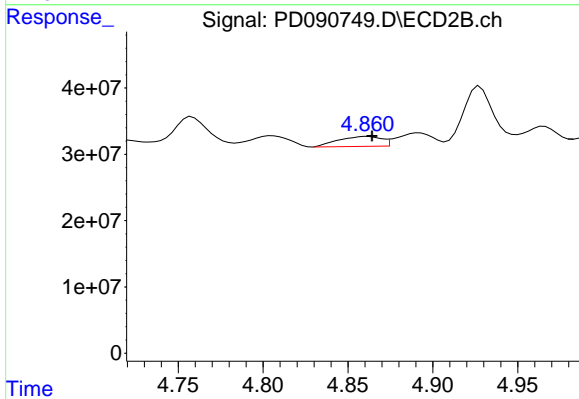
#7 delta-BHC

R.T.: 4.267 min  
 Delta R.T.: 0.012 min  
 Response: 38626148  
 Conc: 0.81 ng/ml



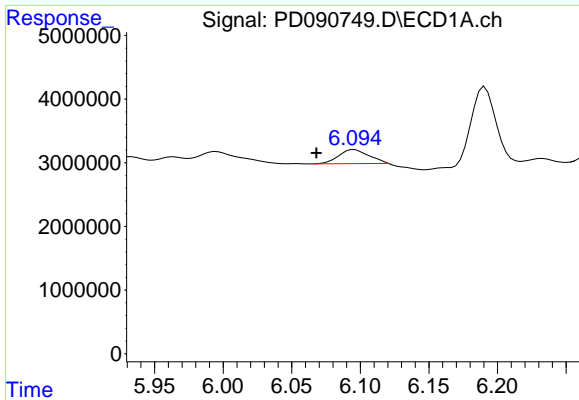
#8 Heptachlor epoxide

R.T.: 5.677 min  
 Delta R.T.: -0.008 min  
 Response: 2081355  
 Conc: 0.36 ng/ml



#8 Heptachlor epoxide

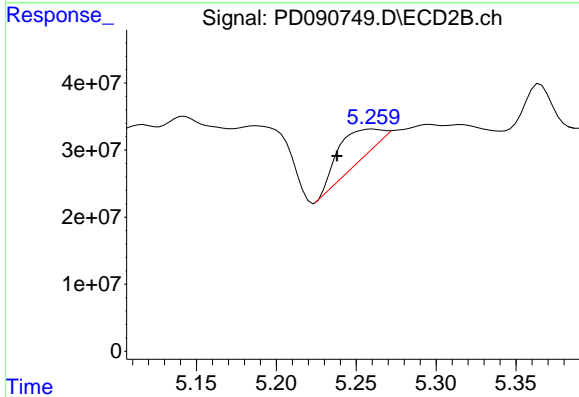
R.T.: 4.861 min  
 Delta R.T.: -0.003 min  
 Response: 26575716  
 Conc: 0.62 ng/ml



#9 Endosulfan I

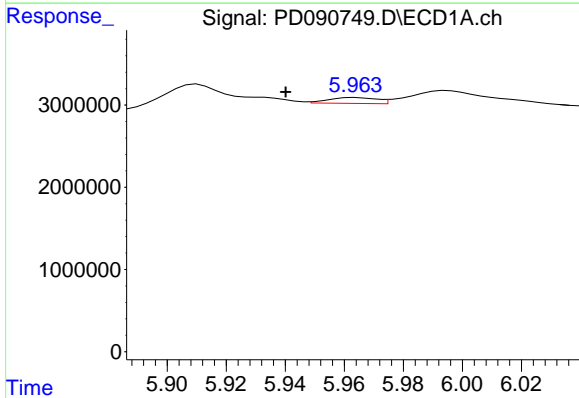
R.T.: 6.096 min  
 Delta R.T.: 0.028 min  
 Response: 3309722  
 Conc: 0.60 ng/ml

Instrument : ECD\_D  
 ClientSampleId : PR132-S08-000013-20251017



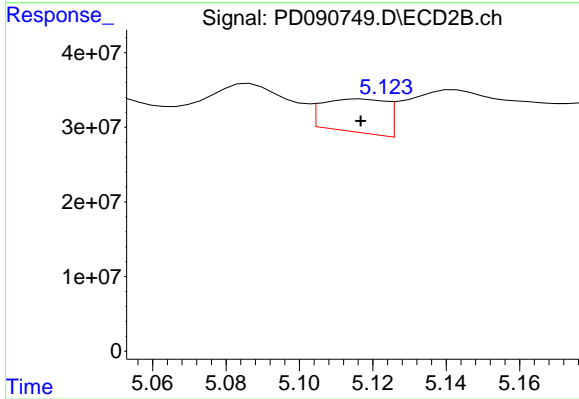
#9 Endosulfan I

R.T.: 5.261 min  
 Delta R.T.: 0.023 min  
 Response: 77005836  
 Conc: 1.95 ng/ml



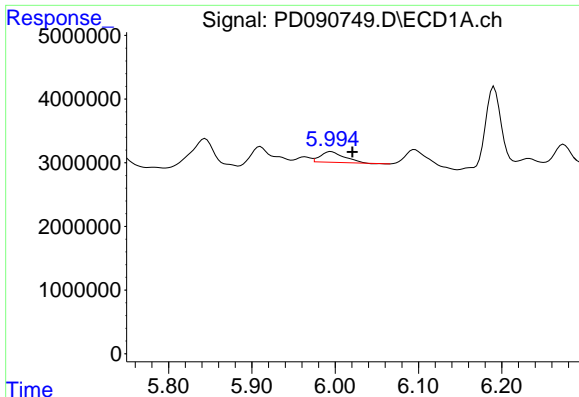
#10 gamma-Chlordane

R.T.: 5.964 min  
 Delta R.T.: 0.024 min  
 Response: 811972  
 Conc: 0.14 ng/ml



#10 gamma-Chlordane

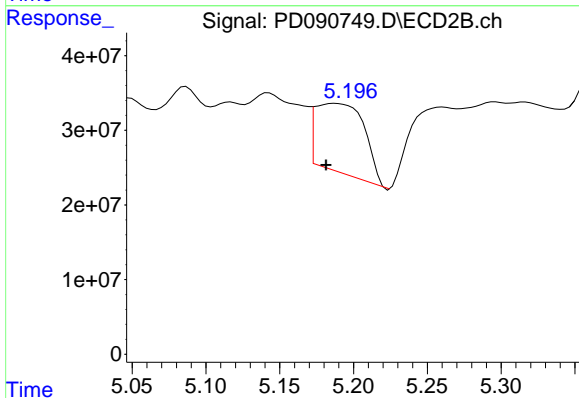
R.T.: 5.117 min  
 Delta R.T.: 0.000 min  
 Response: 53576383  
 Conc: 1.19 ng/ml



#11 alpha-Chlordane

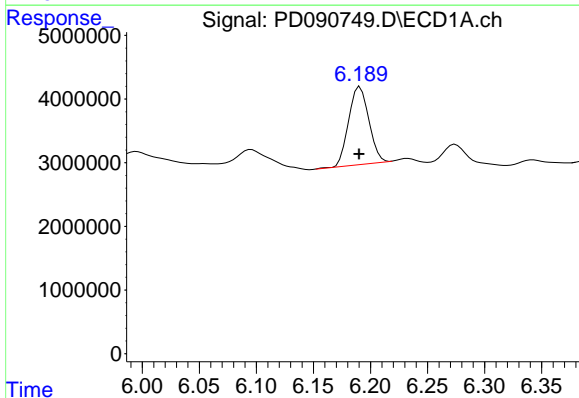
R.T.: 5.995 min  
 Delta R.T.: -0.026 min  
 Response: 3325336  
 Conc: 0.54 ng/ml

Instrument :  
 ECD\_D  
 ClientSampleId :  
 PR132-S08-000013-20251017



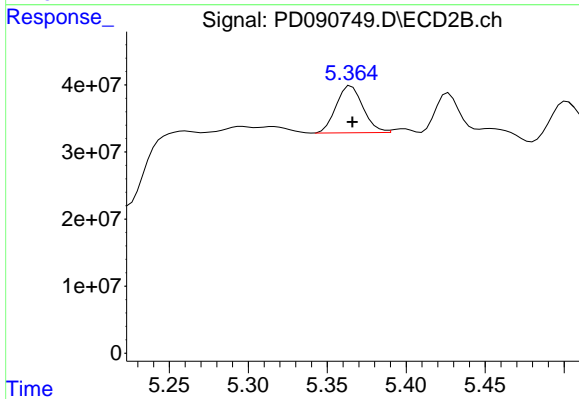
#11 alpha-Chlordane

R.T.: 5.188 min  
 Delta R.T.: 0.006 min  
 Response: 214277211  
 Conc: 4.97 ng/ml



#12 4,4'-DDE

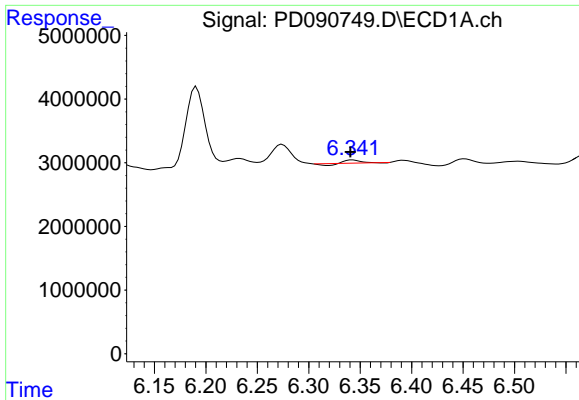
R.T.: 6.191 min  
 Delta R.T.: 0.000 min  
 Response: 15065687  
 Conc: 2.83 ng/ml



#12 4,4'-DDE

R.T.: 5.365 min  
 Delta R.T.: 0.000 min  
 Response: 83180794  
 Conc: 1.90 ng/ml

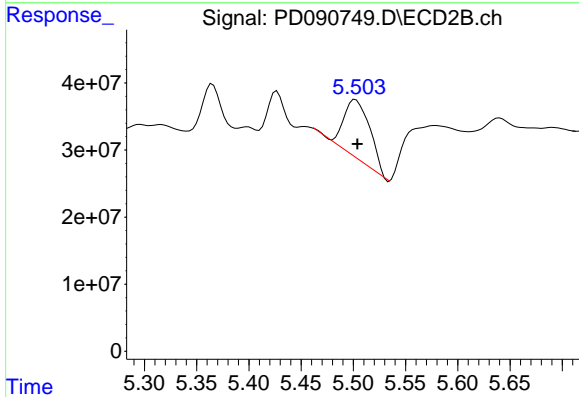




#13 Dieldrin

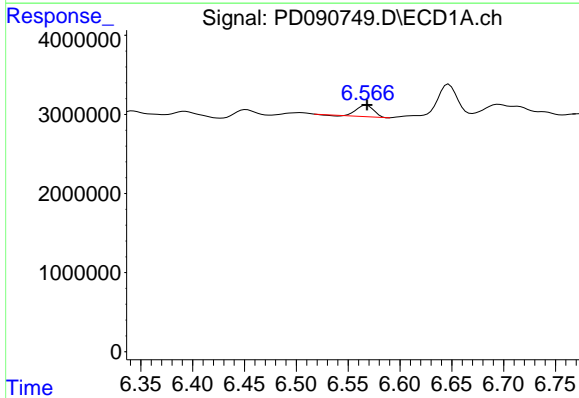
R.T.: 6.343 min  
 Delta R.T.: 0.002 min  
 Response: 258853  
 Conc: 0.04 ng/ml

Instrument :  
 ECD\_D  
 ClientSampleId :  
 PR132-S08-000013-20251017



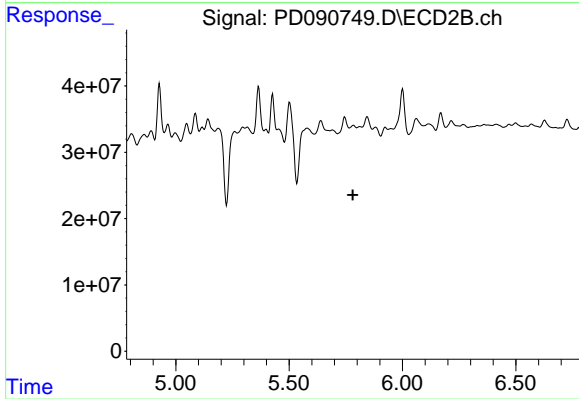
#13 Dieldrin

R.T.: 5.502 min  
 Delta R.T.: -0.002 min  
 Response: 153623639  
 Conc: 3.48 ng/ml



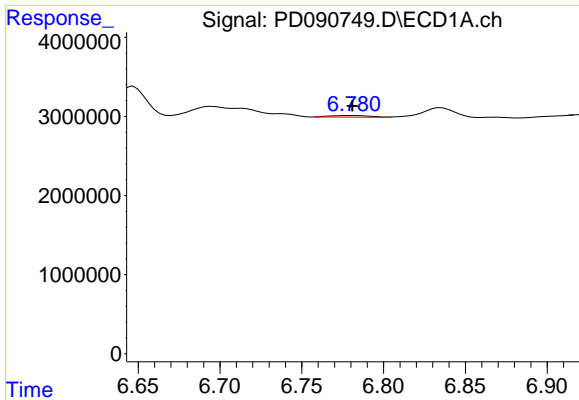
#14 Endrin

R.T.: 6.568 min  
 Delta R.T.: 0.000 min  
 Response: 1707827  
 Conc: 0.34 ng/ml



#14 Endrin

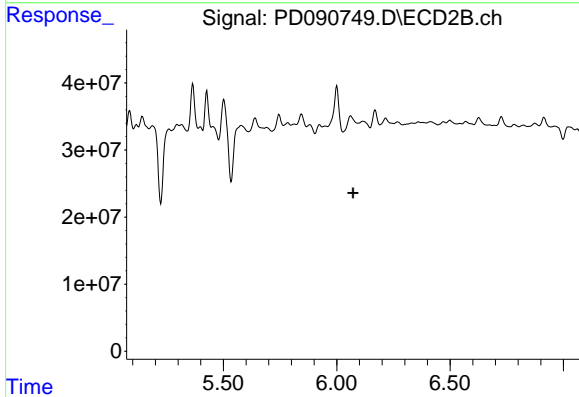
R.T.: 5.784 min  
 Delta R.T.: 0.004 min  
 Response: -7564362  
 Conc: N.D.



#15 Endosulfan II

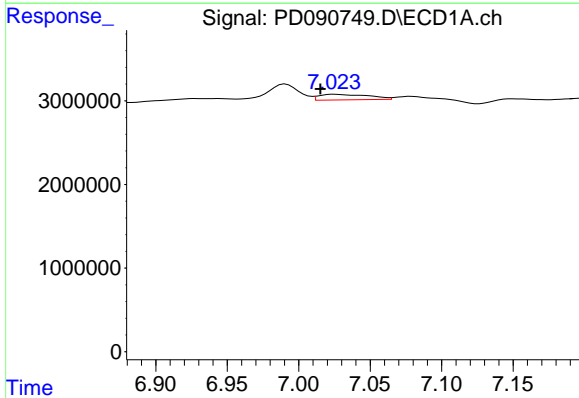
R.T.: 6.781 min  
 Delta R.T.: 0.000 min  
 Response: 352343  
 Conc: 0.07 ng/ml

Instrument : ECD\_D  
 ClientSampleId : PR132-S08-000013-20251017



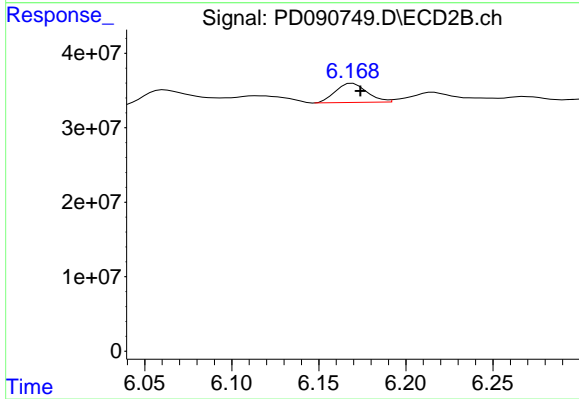
#15 Endosulfan II

R.T.: 6.062 min  
 Delta R.T.: -0.011 min  
 Response: -46265577  
 Conc: N.D.



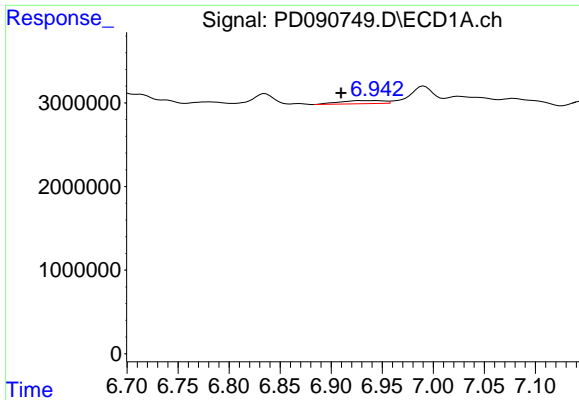
#17 4,4'-DDT

R.T.: 7.026 min  
 Delta R.T.: 0.010 min  
 Response: 1609577  
 Conc: 0.39 ng/ml



#17 4,4'-DDT

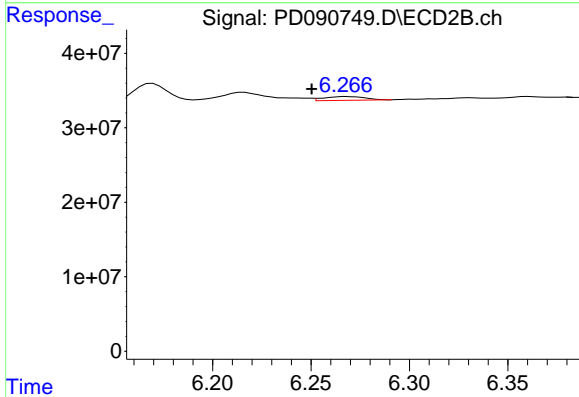
R.T.: 6.170 min  
 Delta R.T.: -0.004 min  
 Response: 32306876  
 Conc: 0.92 ng/ml



#18 Endrin aldehyde

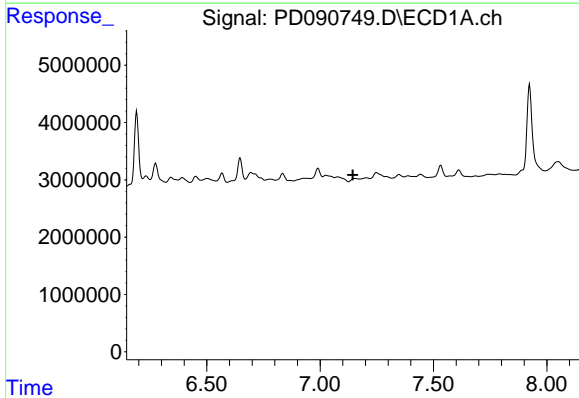
R.T.: 6.943 min  
 Delta R.T.: 0.033 min  
 Response: 1104886  
 Conc: 0.30 ng/ml

Instrument : ECD\_D  
 ClientSampleId : PR132-S08-000013-20251017



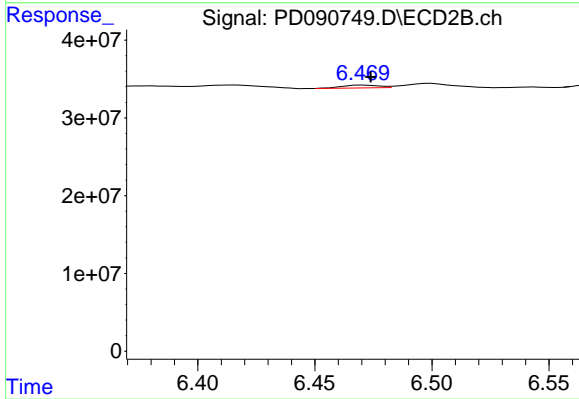
#18 Endrin aldehyde

R.T.: 6.269 min  
 Delta R.T.: 0.018 min  
 Response: 7432254  
 Conc: 0.27 ng/ml



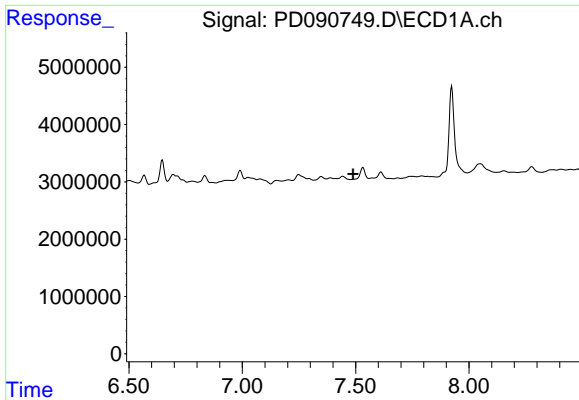
#19 Endosulfan Sulfate

R.T.: 7.151 min  
 Delta R.T.: 0.006 min  
 Response: -514971  
 Conc: N.D.



#19 Endosulfan Sulfate

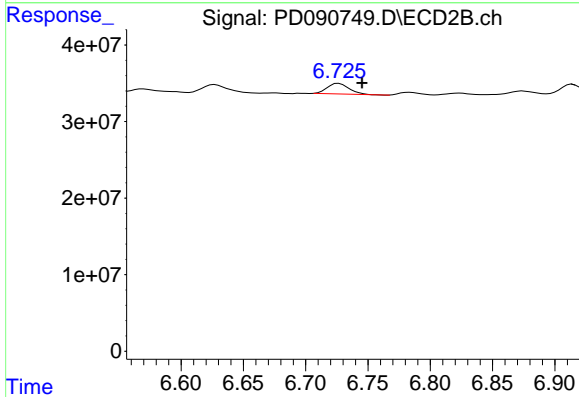
R.T.: 6.471 min  
 Delta R.T.: -0.003 min  
 Response: 3999948  
 Conc: 0.11 ng/ml



#20 Methoxychlor

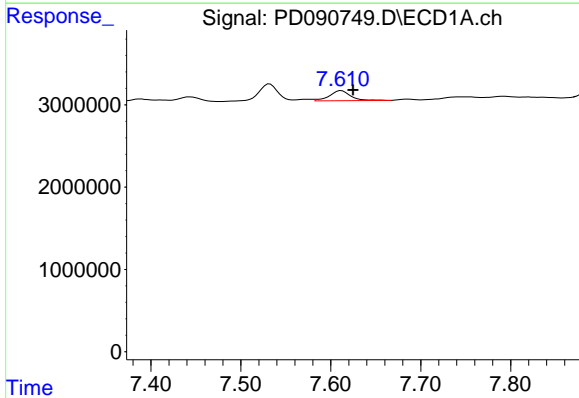
R.T.: 0.000 min  
 Exp R.T.: 7.488 min  
 Response: 0  
 Conc: N.D.

Instrument : ECD\_D  
 ClientSampleId : PR132-S08-000013-20251017



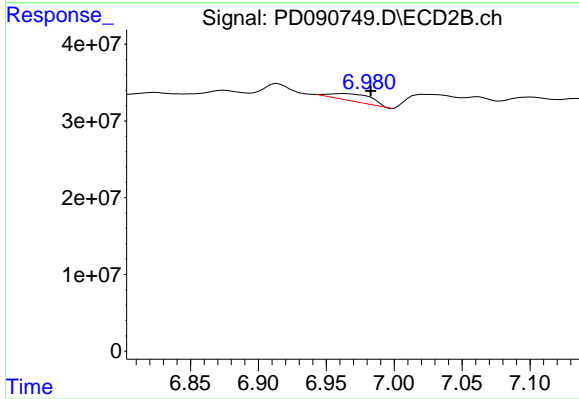
#20 Methoxychlor

R.T.: 6.727 min  
 Delta R.T.: -0.019 min  
 Response: 16918263  
 Conc: 0.97 ng/ml



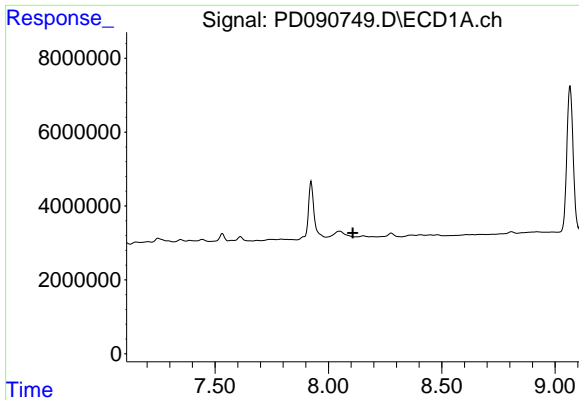
#21 Endrin ketone

R.T.: 7.612 min  
 Delta R.T.: -0.013 min  
 Response: 2021758  
 Conc: 0.42 ng/ml



#21 Endrin ketone

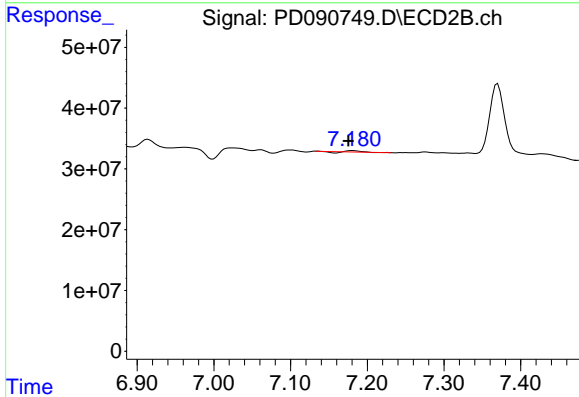
R.T.: 6.963 min  
 Delta R.T.: -0.019 min  
 Response: 20331578  
 Conc: 0.54 ng/ml



#22 Mirex

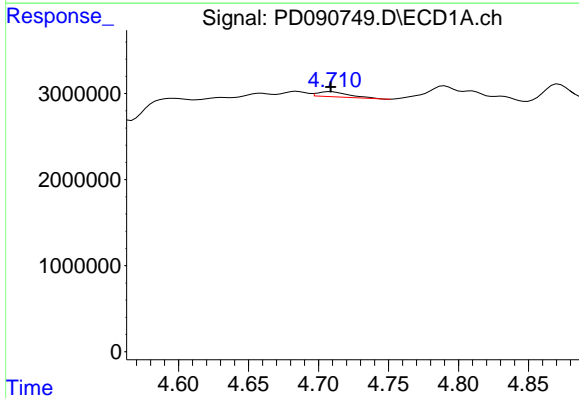
R.T.: 0.000 min  
 Exp R.T.: 8.107 min  
 Response: 0  
 Conc: N.D.

Instrument : ECD\_D  
 ClientSampleId : PR132-S08-000013-20251017



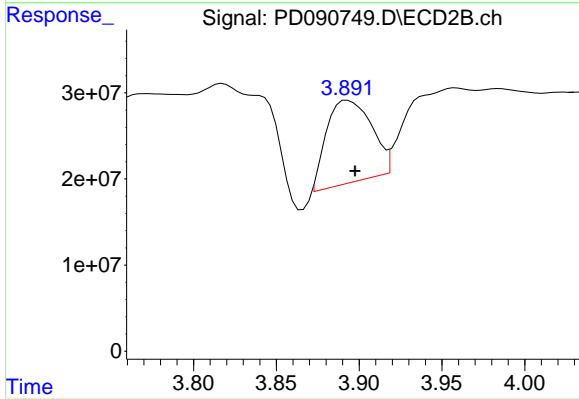
#22 Mirex

R.T.: 7.181 min  
 Delta R.T.: 0.005 min  
 Response: 800047  
 Conc: 0.03 ng/ml



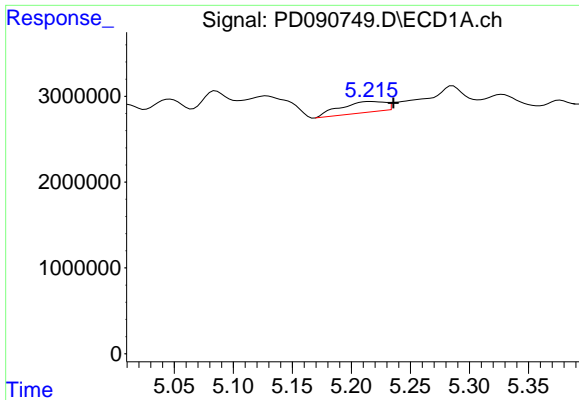
#23 Chlordane-1

R.T.: 4.709 min  
 Delta R.T.: 0.000 min  
 Response: 921699  
 Conc: 4.88 ng/ml



#23 Chlordane-1

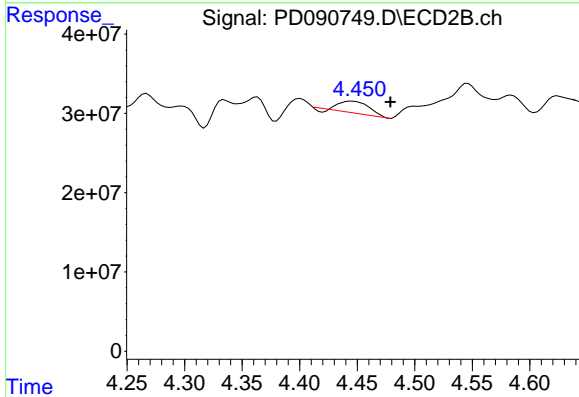
R.T.: 3.893 min  
 Delta R.T.: -0.004 min  
 Response: 179313758  
 Conc: 143.88 ng/ml



#24 Chlordane-2

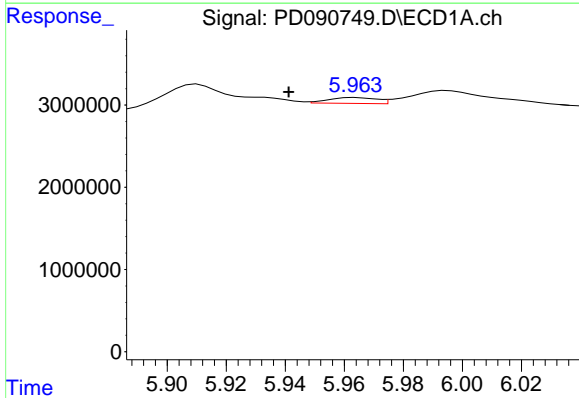
R.T.: 5.216 min  
 Delta R.T.: -0.019 min  
 Response: 3372113  
 Conc: 17.46 ng/ml

Instrument :  
 ECD\_D  
 ClientSampleId :  
 PR132-S08-000013-20251017



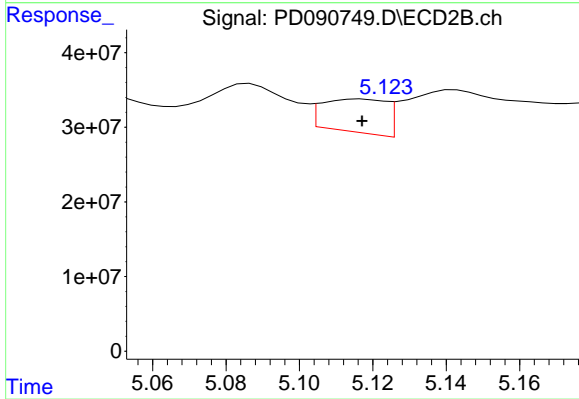
#24 Chlordane-2

R.T.: 4.445 min  
 Delta R.T.: -0.033 min  
 Response: 25610528  
 Conc: 19.63 ng/ml



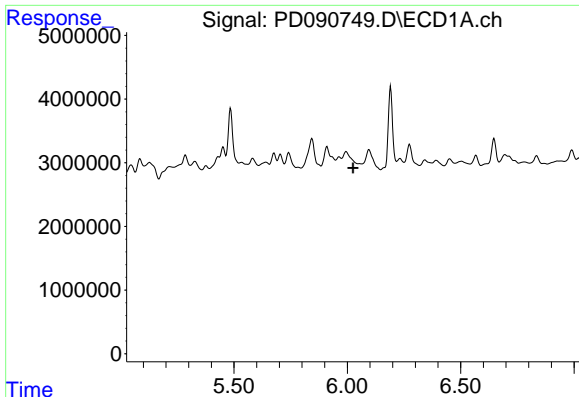
#25 Chlordane-3

R.T.: 5.964 min  
 Delta R.T.: 0.023 min  
 Response: 811972  
 Conc: 1.06 ng/ml



#25 Chlordane-3

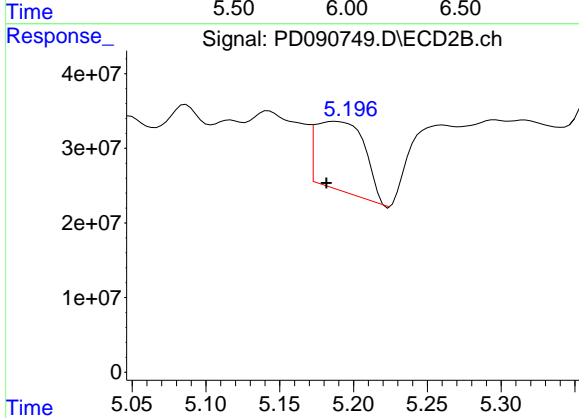
R.T.: 5.117 min  
 Delta R.T.: 0.000 min  
 Response: 53576383  
 Conc: 13.77 ng/ml



#26 Chlordane-4

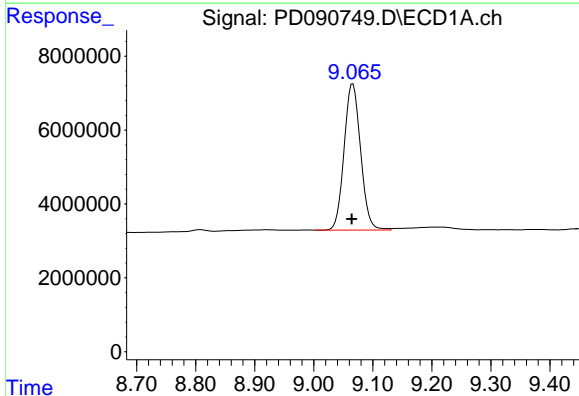
R.T.: 0.000 min  
 Exp R.T.: 6.025 min  
 Response: 0  
 Conc: N.D.

Instrument :  
 ECD\_D  
 ClientSampleId :  
 PR132-S08-000013-20251017



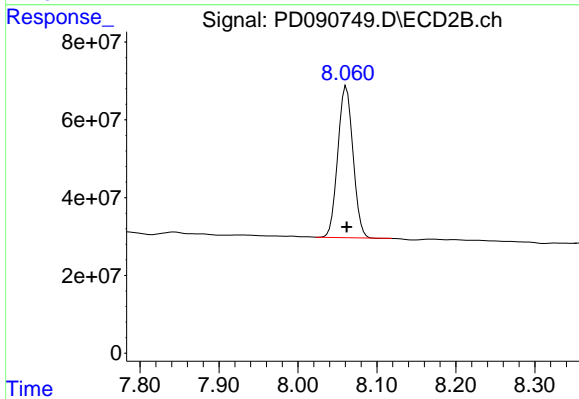
#26 Chlordane-4

R.T.: 5.188 min  
 Delta R.T.: 0.006 min  
 Response: 214277211  
 Conc: 64.13 ng/ml



#28 Decachlorobiphenyl

R.T.: 9.066 min  
 Delta R.T.: 0.002 min  
 Response: 76962732  
 Conc: 16.45 ng/ml



#28 Decachlorobiphenyl

R.T.: 8.061 min  
 Delta R.T.: 0.000 min  
 Response: 520252062  
 Conc: 17.17 ng/ml