

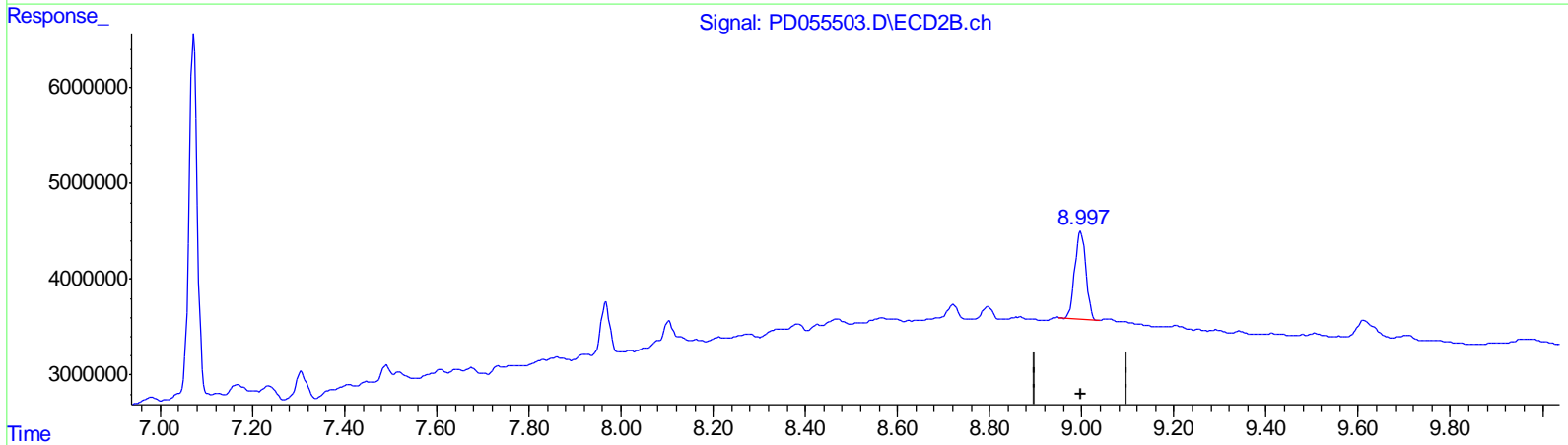
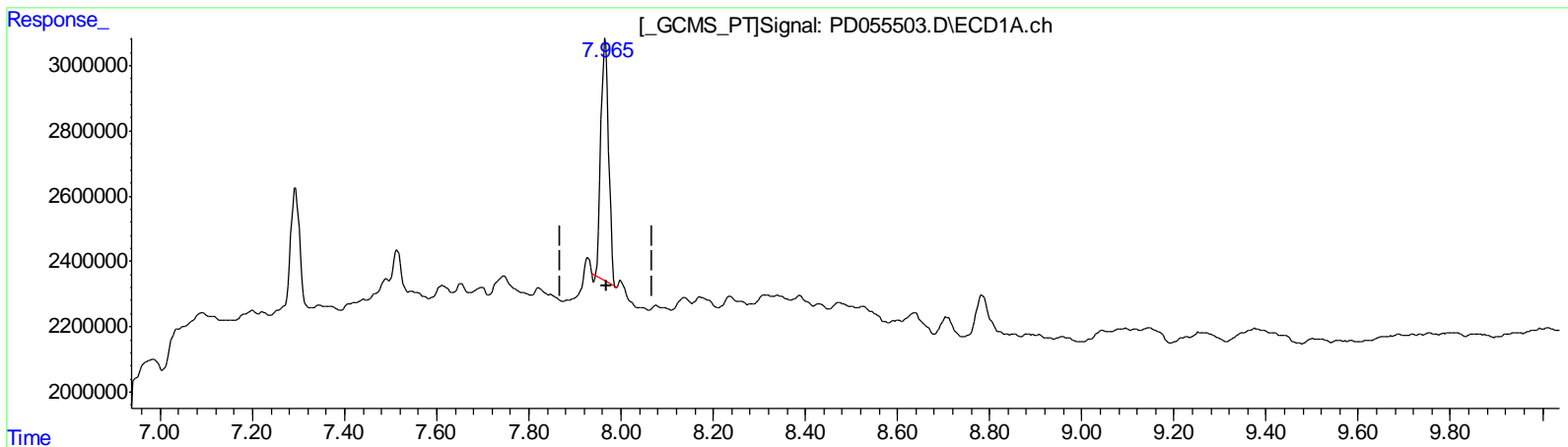
Data Path : Z:\pestpcbsrv\HPCHEM1\ECD_D\Data\PD102219\
 Data File : PD055503.D
 Signal(s) : Signal #1: ECD1A.ch Signal #2: ECD2B.ch
 Acq On : 22 Oct 2019 15:10
 Operator : SG\AJ
 Sample : K5344-09MS
 Misc :
 ALS Vial : 13 Sample Multiplier: 1

Instrument :
 ECD_D
ClientSampled :
 BF6L5MS

Manual Integrations
APPROVED
 Ankita
 10/23/2019 1:30:36 PM

Integration File signal 1: autoint1.e
 Integration File signal 2: autoint2.e
 Quant Time: Oct 23 01:14:21 2019
 Quant Method : Z:\pestpcbsrv\HPCHEM1\ECD_D\Method\PD101819CLP.M
 Quant Title : GC Extractables
 QLast Update : Sat Oct 19 00:42:03 2019
 Response via : Initial Calibration
 Integrator: ChemStation

Volume Inj. : 1 µl
 Signal #1 Phase : ZB-MR2 Signal #2 Phase: ZB-MR1
 Signal #1 Info : 30M x 0.32mm x0.2 Signal #2 Info : 30M x 0.32mm x 0.50µm



QEdit

(27) Decachlorobiphenyl (SA)

7.966min 9.558 ng/ml

response 8751558

(27) Decachlorobiphenyl #2 (SA)

8.998min 11.803 ng/ml

response 15400660

(+) = Expected Retention Time

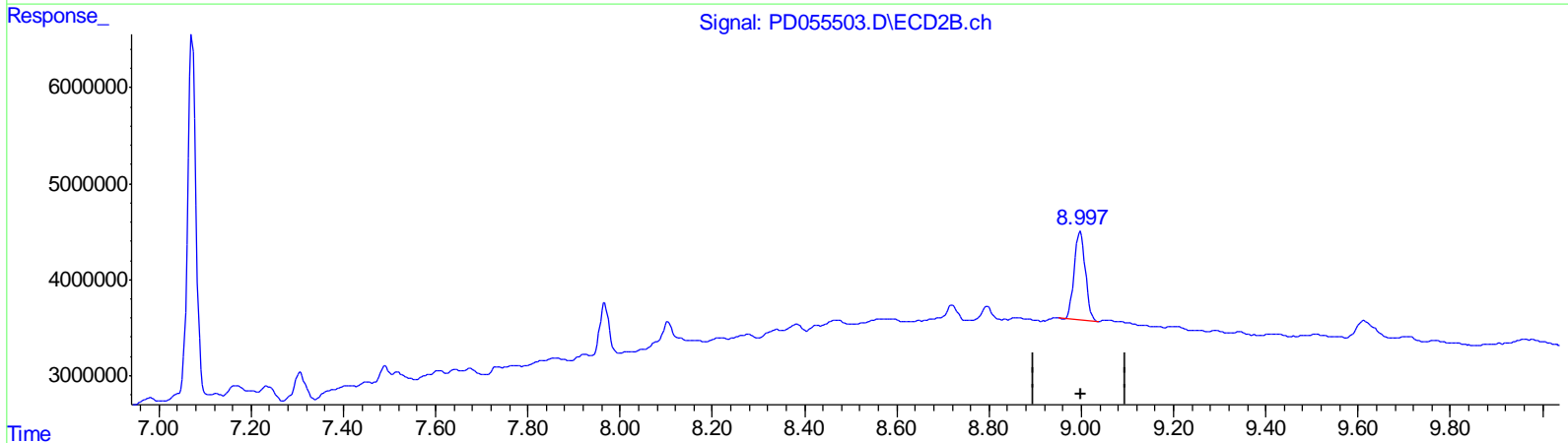
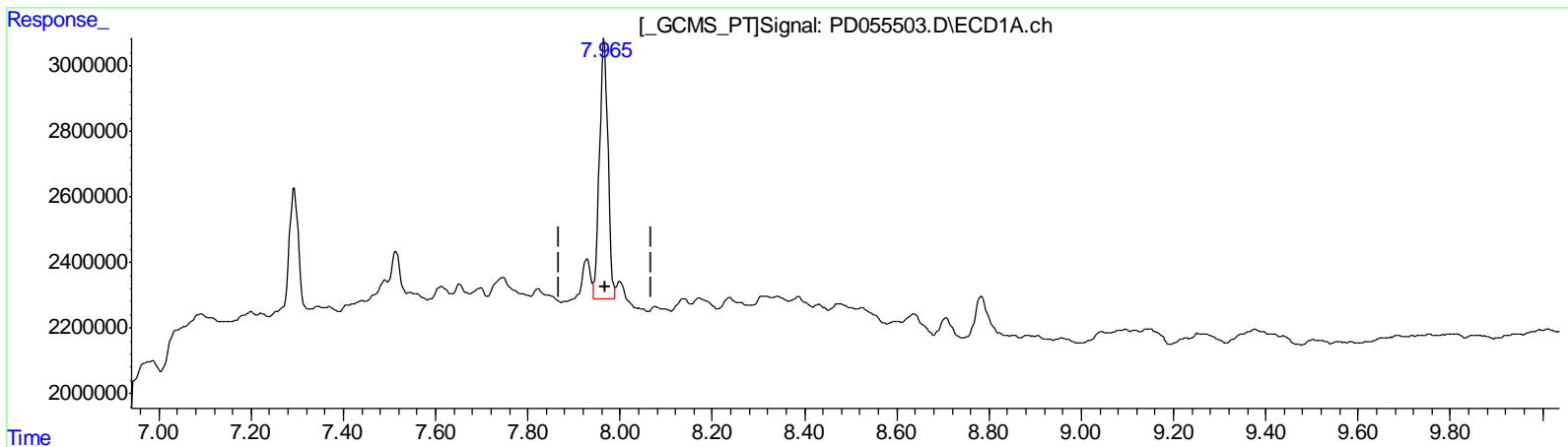
Data Path : Z:\pestpcbsrv\HPCHEM1\ECD_D\Data\PD102219\
 Data File : PD055503.D
 Signal(s) : Signal #1: ECD1A.ch Signal #2: ECD2B.ch
 Acq On : 22 Oct 2019 15:10
 Operator : SG\AJ
 Sample : K5344-09MS
 Misc :
 ALS Vial : 13 Sample Multiplier: 1

Instrument :
 ECD_D
ClientSampled :
 BF6L5MS

Manual Integrations
APPROVED
 Ankita
 10/23/2019 1:30:36 PM

Integration File signal 1: autoint1.e
 Integration File signal 2: autoint2.e
 Quant Time: Oct 23 01:14:21 2019
 Quant Method : Z:\pestpcbsrv\HPCHEM1\ECD_D\Method\PD101819CLP.M
 Quant Title : GC Extractables
 QLast Update : Sat Oct 19 00:42:03 2019
 Response via : Initial Calibration
 Integrator: ChemStation

Volume Inj. : 1 µl
 Signal #1 Phase : ZB-MR2 Signal #2 Phase: ZB-MR1
 Signal #1 Info : 30M x 0.32mm x0.2 Signal #2 Info : 30M x 0.32mm x 0.50µm



QEdit

(27) Decachlorobiphenyl (SA)

7.965min 11.235 ng/ml m

response 10287775

(27) Decachlorobiphenyl #2 (SA)

8.998min 11.803 ng/ml

response 15400660

(+) = Expected Retention Time

Data Path : Z:\pestpcbsrv\HPCHEM1\ECD_D\Data\PD102219\
 Data File : PD055503.D
 Signal(s) : Signal #1: ECD1A.ch Signal #2: ECD2B.ch
 Acq On : 22 Oct 2019 15:10
 Operator : SG\AJ
 Sample : K5344-09MS
 Misc :
 ALS Vial : 13 Sample Multiplier: 1

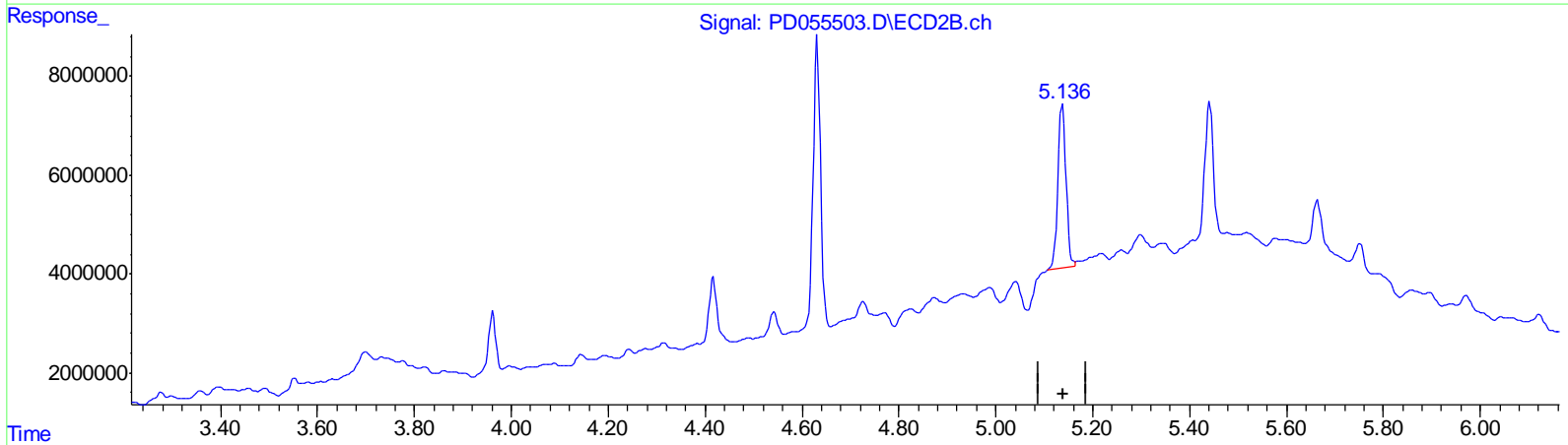
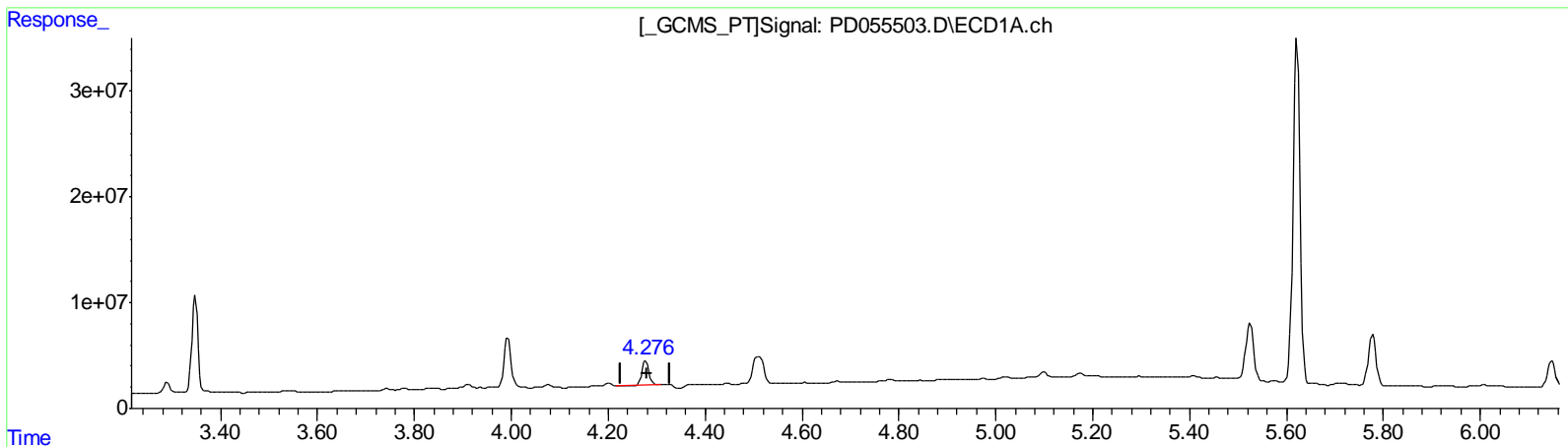
Instrument :
 ECD_D
 ClientSampled :
 BF6L5MS

Manual Integrations
 APPROVED

Ankita
 10/23/2019 1:30:36 PM

Integration File signal 1: autoint1.e
 Integration File signal 2: autoint2.e
 Quant Time: Oct 23 01:14:21 2019
 Quant Method : Z:\pestpcbsrv\HPCHEM1\ECD_D\Method\PD101819CLP.M
 Quant Title : GC Extractables
 QLast Update : Sat Oct 19 00:42:03 2019
 Response via : Initial Calibration
 Integrator: ChemStation

Volume Inj. : 1 µl
 Signal #1 Phase : ZB-MR2 Signal #2 Phase: ZB-MR1
 Signal #1 Info : 30M x 0.32mm x0.2 Signal #2 Info : 30M x 0.32mm x 0.50µm



(4) Heptachlor (MA)
 4.277min 24.906 ng/ml
 response 22663316

(4) Heptachlor #2 (MA)
 5.138min 20.722 ng/ml
 response 38643027

(+) = Expected Retention Time

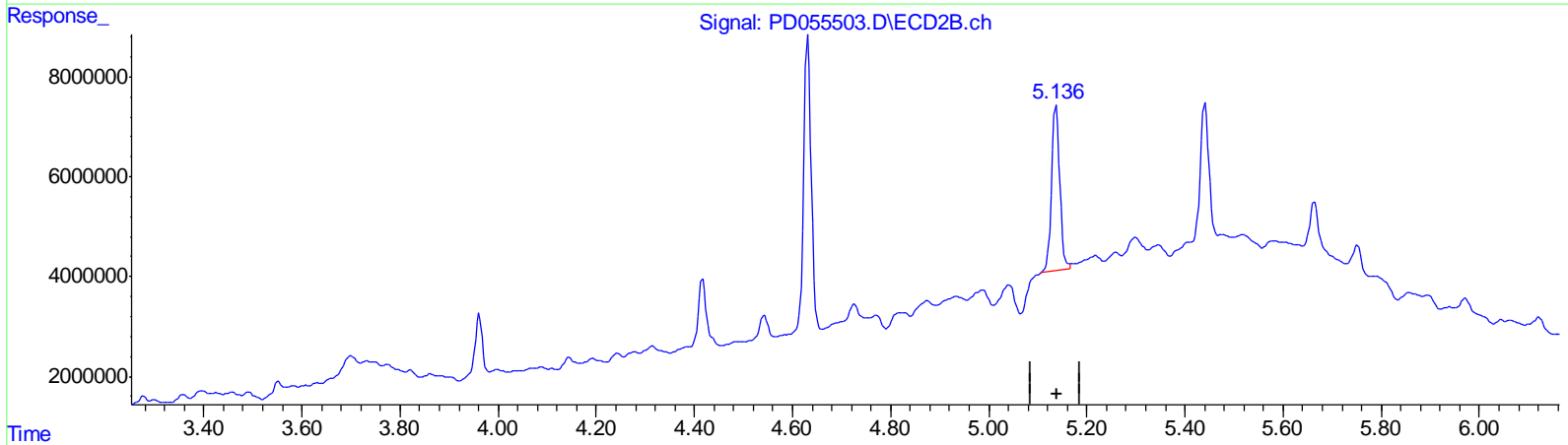
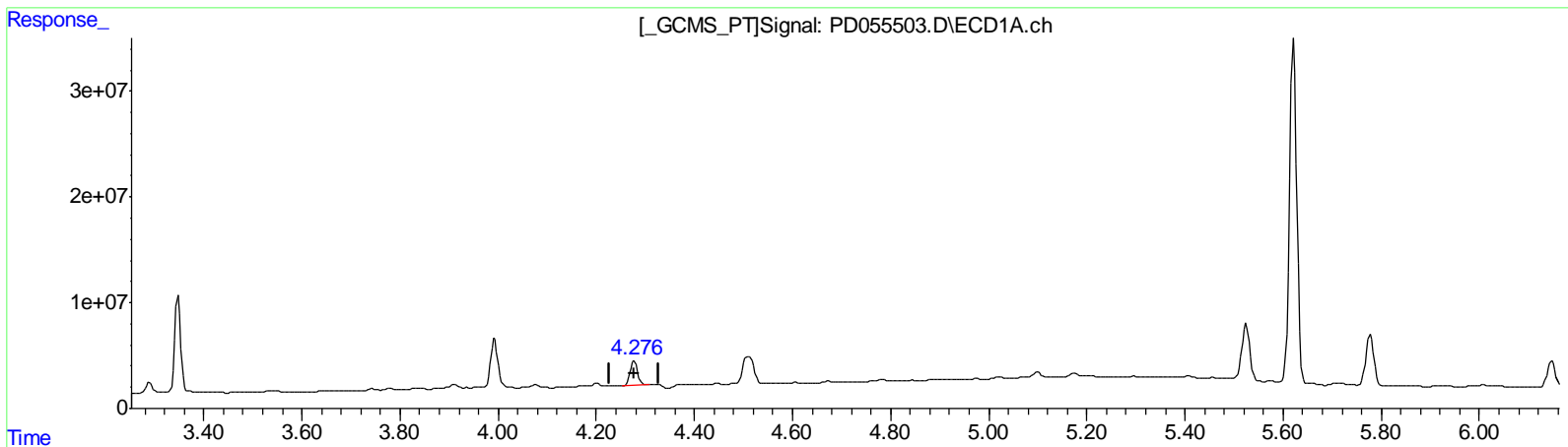
Data Path : Z:\pestpcbsrv\HPCHEM1\ECD_D\Data\PD102219\
 Data File : PD055503.D
 Signal(s) : Signal #1: ECD1A.ch Signal #2: ECD2B.ch
 Acq On : 22 Oct 2019 15:10
 Operator : SG\AJ
 Sample : K5344-09MS
 Misc :
 ALS Vial : 13 Sample Multiplier: 1

Instrument :
 ECD_D
Client Sampled :
 BF6L5MS

Manual Integrations
APPROVED
 Ankita
 10/23/2019 1:30:36 PM

Integration File signal 1: autoint1.e
 Integration File signal 2: autoint2.e
 Quant Time: Oct 23 01:14:21 2019
 Quant Method : Z:\pestpcbsrv\HPCHEM1\ECD_D\Method\PD101819CLP.M
 Quant Title : GC Extractables
 QLast Update : Sat Oct 19 00:42:03 2019
 Response via : Initial Calibration
 Integrator: ChemStation

Volume Inj. : 1 µl
 Signal #1 Phase : ZB-MR2 Signal #2 Phase: ZB-MR1
 Signal #1 Info : 30M x 0.32mm x0.2 Signal #2 Info : 30M x 0.32mm x 0.50µm



(4) Heptachlor (MA)
 4.276min 25.935 ng/ml m
 response 23599468

(4) Heptachlor #2 (MA)
 5.138min 20.722 ng/ml
 response 38643027

(+) = Expected Retention Time

Data Path : Z:\pestpcbsrv\HPCHEM1\ECD_D\Data\PD102219\
 Data File : PD055503.D
 Signal(s) : Signal #1: ECD1A.ch Signal #2: ECD2B.ch
 Acq On : 22 Oct 2019 15:10
 Operator : SG\AJ
 Sample : K5344-09MS
 Misc :
 ALS Vial : 13 Sample Multiplier: 1

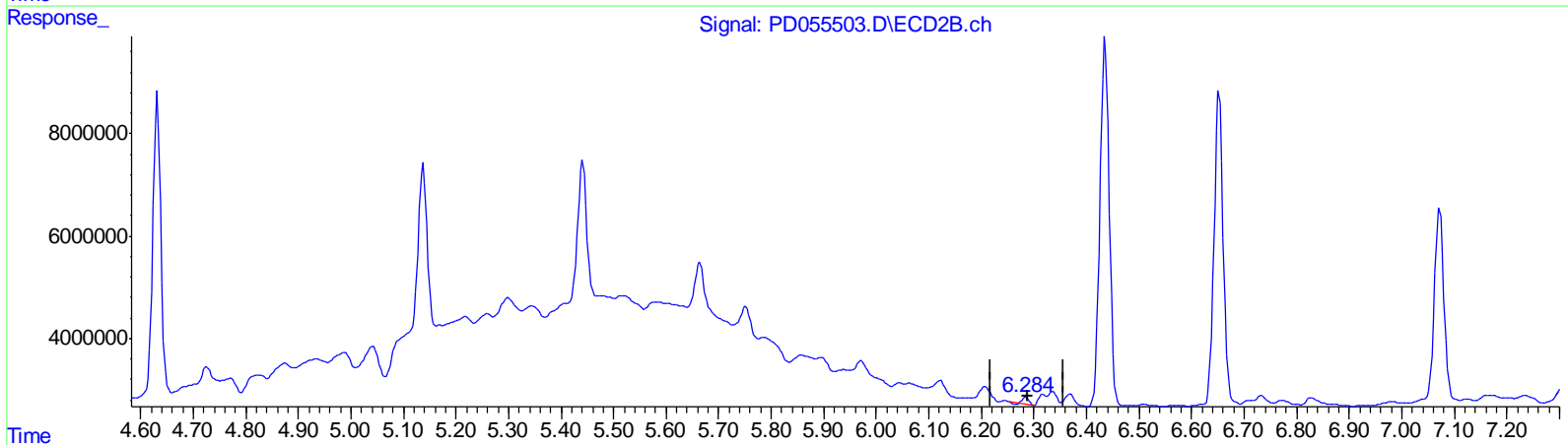
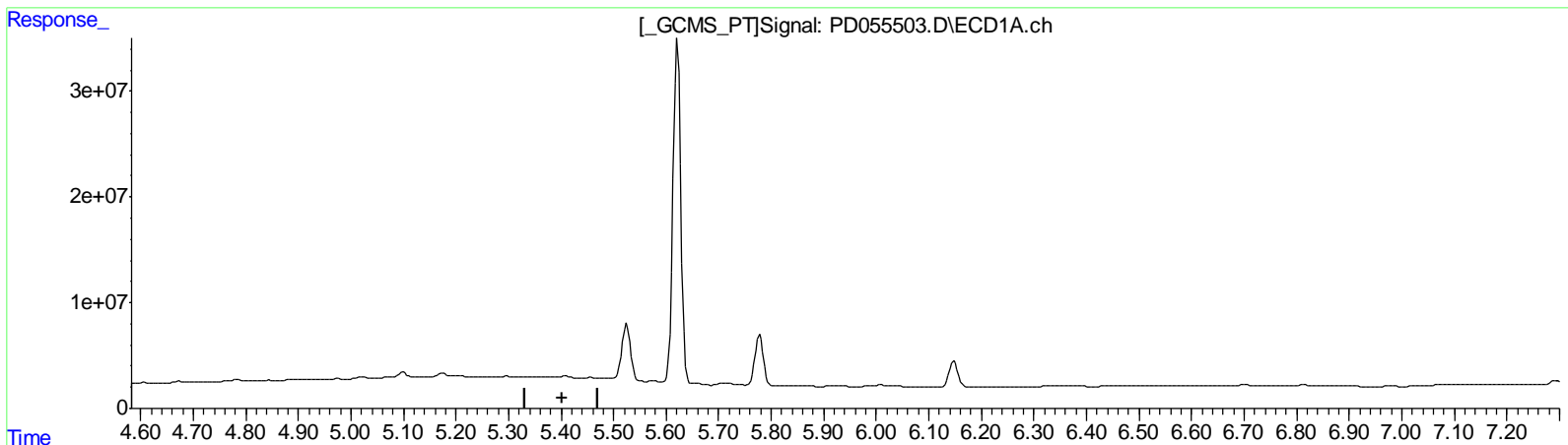
Instrument :
 ECD_D
 ClientSampled :
 BF6L5MS

Manual Integrations
 APPROVED

Ankita
 10/23/2019 1:30:36 PM

Integration File signal 1: autoint1.e
 Integration File signal 2: autoint2.e
 Quant Time: Oct 23 01:14:21 2019
 Quant Method : Z:\pestpcbsrv\HPCHEM1\ECD_D\Method\PD101819CLP.M
 Quant Title : GC Extractables
 QLast Update : Sat Oct 19 00:42:03 2019
 Response via : Initial Calibration
 Integrator: ChemStation

Volume Inj. : 1 µl
 Signal #1 Phase : ZB-MR2 Signal #2 Phase: ZB-MR1
 Signal #1 Info : 30M x 0.32mm x0.2 Signal #2 Info : 30M x 0.32mm x 0.50µm



QEdit

(12) 4,4'-DDE (B)
 0.000min 0.000 ng/ml
 response 0

(12) 4,4'-DDE #2 (B)
 6.285min 0.504 ng/ml
 response 849208

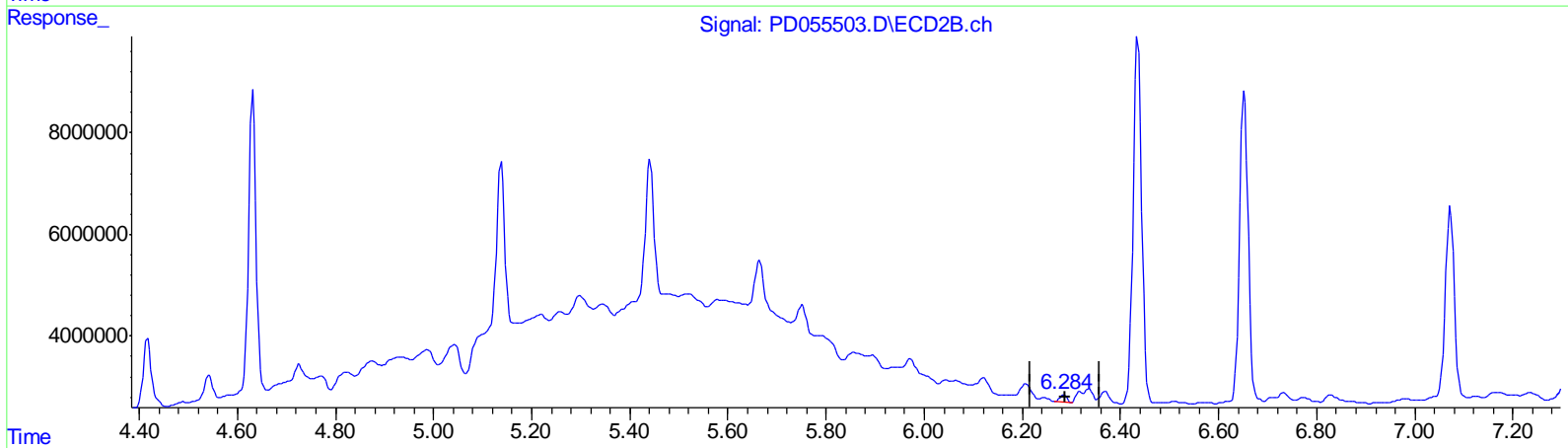
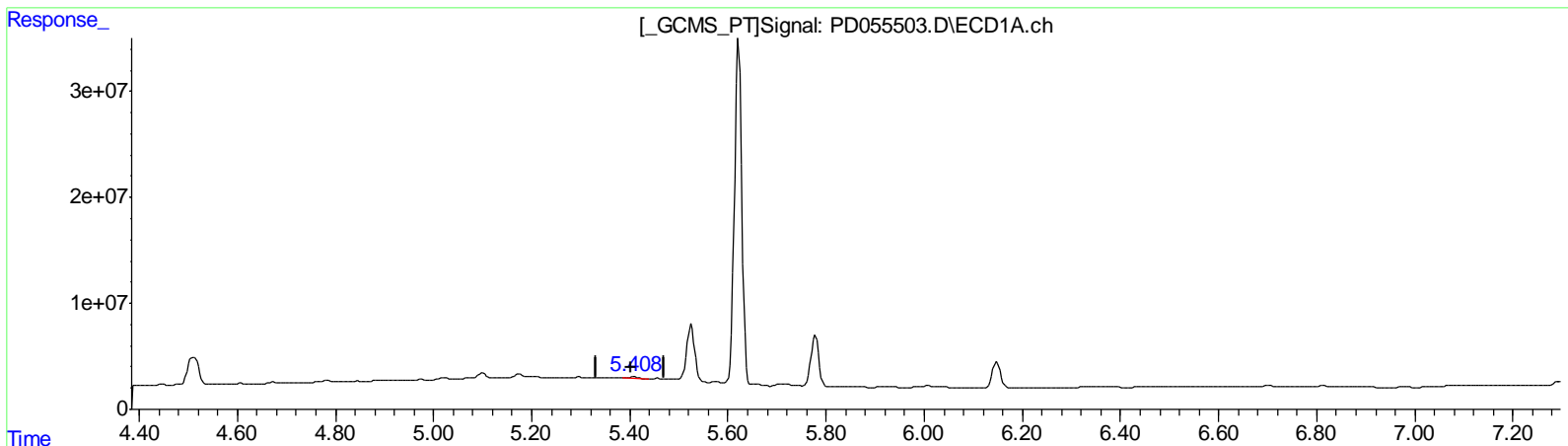
Data Path : Z:\pestpcbsrv\HPCHEM1\ECD_D\Data\PD102219\
 Data File : PD055503.D
 Signal(s) : Signal #1: ECD1A.ch Signal #2: ECD2B.ch
 Acq On : 22 Oct 2019 15:10
 Operator : SG\AJ
 Sample : K5344-09MS
 Misc :
 ALS Vial : 13 Sample Multiplier: 1

Instrument :
 ECD_D
Client Sampled :
 BF6L5MS

Manual Integrations
APPROVED
 Ankita
 10/23/2019 1:30:36 PM

Integration File signal 1: autoint1.e
 Integration File signal 2: autoint2.e
 Quant Time: Oct 23 01:14:21 2019
 Quant Method : Z:\pestpcbsrv\HPCHEM1\ECD_D\Method\PD101819CLP.M
 Quant Title : GC Extractables
 QLast Update : Sat Oct 19 00:42:03 2019
 Response via : Initial Calibration
 Integrator: ChemStation

Volume Inj. : 1 µl
 Signal #1 Phase : ZB-MR2 Signal #2 Phase: ZB-MR1
 Signal #1 Info : 30M x 0.32mm x0.2 Signal #2 Info : 30M x 0.32mm x 0.50µm



QEdit

(12) 4,4'-DDE (B)
 5.408min 1.804 ng/ml m
 response 1839238

(12) 4,4'-DDE #2 (B)
 6.284min 0.845 ng/ml m
 response 1425440

(+) = Expected Retention Time

Quantitation Report (QT Reviewed)

Data Path : Z:\pestpcbsrv\HPCHEM1\ECD_D\Data\PD102219\
 Data File : PD055503.D
 Signal(s) : Signal #1: ECD1A.ch Signal #2: ECD2B.ch
 Acq On : 22 Oct 2019 15:10
 Operator : SG\AJ
 Sample : K5344-09MS
 Misc :
 ALS Vial : 13 Sample Multiplier: 1

Instrument :
 ECD_D
 Client Sampled :
 BF6L5MS

Manual Integrations
 APPROVED

Ankita
 10/23/2019 1:30:36 PM

Integration File signal 1: autoint1.e
 Integration File signal 2: autoint2.e
 Quant Time: Oct 23 01:14:21 2019
 Quant Method : Z:\pestpcbsrv\HPCHEM1\ECD_D\Method\PD101819CLP.M
 Quant Title : GC Extractables
 QLast Update : Sat Oct 19 00:42:03 2019
 Response via : Initial Calibration
 Integrator: ChemStation

Volume Inj. : 1 µl
 Signal #1 Phase : ZB-MR2 Signal #2 Phase: ZB-MR1
 Signal #1 Info : 30M x 0.32mm x 0.2 Signal #2 Info : 30M x 0.32mm x 0.50µm

Compound	RT#1	RT#2	Resp#1	Resp#2	ng/ml	ng/ml

System Monitoring Compounds						
1) SA Tetrachlo...	3.290	3.962	8590336	12723071	9.635	9.450
27) SA Decachlor...	7.965	8.998	10287775	15400660	11.235m	11.803
Target Compounds						
3) MA gamma-BHC...	3.993	4.632	47959674	62735220	40.472	34.022
4) MA Heptachlor	4.276	5.138	23599468	38643027	25.935m	20.722
5) MB Aldrin	4.510	5.441	38217543	36519342	35.928	21.001 #
12) B 4,4'-DDE	5.408	6.284	1839238	1425440	1.804m	0.845m#
13) MA Dieldrin	5.525	6.436	61498305	88449468	55.492	48.872
14) MA Endrin	5.778	6.653	53137922	75442047	59.325	54.011
17) MA 4,4'-DDT	6.148	7.072	29038599	46483253	42.830	34.294

A.J
 10/26/19

(f)=RT Delta > 1/2 Window (#)=Amounts differ by > 25% (m)=manual int.