

Data Path : Z:\pestpcbsrv\HPCHEM1\ECD_D\Data\PD102224\
 Data File : PD086163.D
 Signal(s) : Signal #1: ECD1A.ch Signal #2: ECD2B.ch
 Acq On : 22 Oct 2024 13:12
 Operator : AR\AJ
 Sample : TOXAPH501
 Misc :
 ALS Vial : 8 Sample Multiplier: 1

Instrument :
 ECD_D
ClientSampleId :
 TOXAPH5064

Manual Integrations
APPROVED
 Reviewed By :Abdul Mirza 10/23/2024
 Supervised By :Ankita Jodhani 10/23/2024

Integration File signal 1: autoint1.e
 Integration File signal 2: autoint2.e
 Quant Time: Oct 22 14:05:37 2024
 Quant Method : Z:\pestpcbsrv\HPCHEM1\ECD_D\Method\PD102224CLP.M
 Quant Title : GC Extractables
 QLast Update : Tue Oct 22 14:01:08 2024
 Response via : Initial Calibration
 Integrator: ChemStation

Volume Inj. : 1 µl
 Signal #1 Phase : ZB-MR1 Signal #2 Phase: ZB-MR2
 Signal #1 Info : 30M x 0.32mm x0.5 Signal #2 Info : 30M x 0.32mm x 0.25µm

Compound	RT#1	RT#2	Resp#1	Resp#2	ng/ml	ng/ml

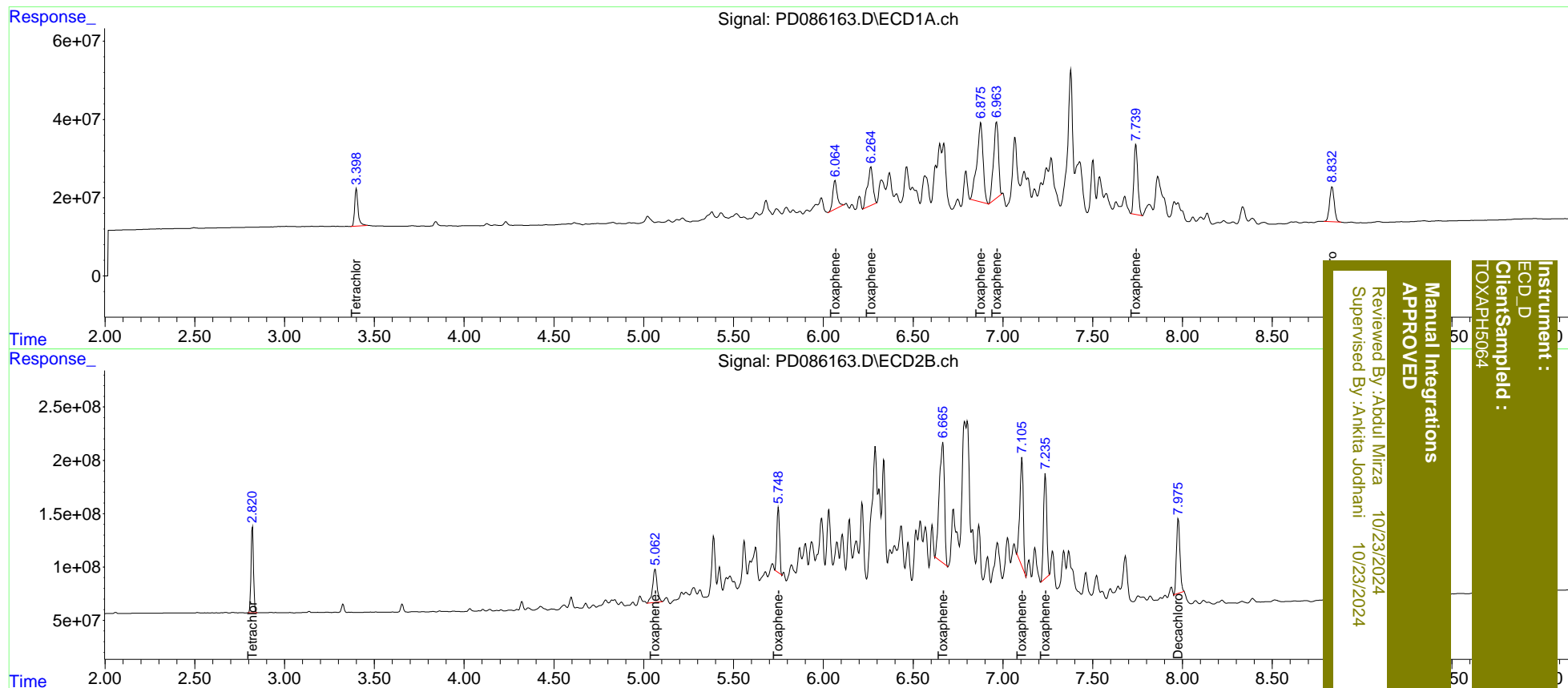
System Monitoring Compounds						
1) SA Tetrachlo...	3.398	2.821	126.5E6	771.1E6	85.478m	79.689
27) SA Decachlor...	8.832	7.977	162.5E6	942.9E6	154.368m	158.149
Target Compounds						
22) Toxaphene-1	6.064	5.062	125.5E6	546.1E6	8789.907m	7975.187m
23) Toxaphene-2	6.264	5.750	212.0E6	651.2E6	8026.663m	7900.328
24) Toxaphene-3	6.876	6.666	486.4E6	2259.2E6	8532.269	7947.714
25) Toxaphene-4	6.963	7.106	372.4E6	1352.9E6	8481.491m	7836.108
26) Toxaphene-5	7.739	7.236	266.4E6	1225.2E6	8391.785m	8038.973

(f)=RT Delta > 1/2 Window (#)=Amounts differ by > 25% (m)=manual int.

Data Path : Z:\pestpcbsrv\HPCHEM1\ECD_D\Data\PD102224\
 Data File : PD086163.D
 Signal(s) : Signal #1: ECD1A.ch Signal #2: ECD2B.ch
 Acq On : 22 Oct 2024 13:12
 Operator : AR\AJ
 Sample : TOXAPH501
 Misc :
 ALS Vial : 8 Sample Multiplier: 1

Integration File signal 1: autoint1.e
 Integration File signal 2: autoint2.e
 Quant Time: Oct 22 14:05:37 2024
 Quant Method : Z:\pestpcbsrv\HPCHEM1\ECD_D\Method\PD102224CLP.M
 Quant Title : GC Extractables
 QLast Update : Tue Oct 22 14:01:08 2024
 Response via : Initial Calibration
 Integrator: ChemStation

Volume Inj. : 1 µl
 Signal #1 Phase : ZB-MR1 Signal #2 Phase: ZB-MR2
 Signal #1 Info : 30M x 0.32mm x 0.5 Signal #2 Info : 30M x 0.32mm x 0.25µm



Instrument : ECD_D
 Client Sampled : TOXAPH5064
 Manual Integrations APPROVED
 Reviewed By : Abdul Mirza 10/23/2024
 Supervised By : Ankita Jodhani 10/23/2024