

Data Path : Z:\pestpcbsrv\HPCHEM1\ECD_D\Data\PD102225\
 Data File : PD090766.D
 Signal(s) : Signal #1: ECD1A.ch Signal #2: ECD2B.ch
 Acq On : 22 Oct 2025 17:44
 Operator : AR\AJ
 Sample : PB170218BS
 Misc :
 ALS Vial : 13 Sample Multiplier: 1

Instrument :
 ECD_D
 ClientSampleId :
 PB170218BS

Integration File signal 1: autoint1.e
 Integration File signal 2: autoint2.e
 Quant Time: Oct 23 14:23:13 2025
 Quant Method : Z:\pestpcbsrv\HPCHEM1\ECD_D\Method\PD101725.M
 Quant Title : GC Extractables
 QLast Update : Fri Oct 17 17:43:28 2025
 Response via : Initial Calibration
 Integrator: ChemStation

Volume Inj. : 1 µl
 Signal #1 Phase : ZB-MR2 Signal #2 Phase: ZB-MR2
 Signal #1 Info : 30M x 0.32mm x0.5 Signal #2 Info : 30M x 0.32mm x 0.25µm

	Compound	RT#1	RT#2	Resp#1	Resp#2	ng/ml	ng/ml

System Monitoring Compounds							
1)	SA Tetrachlo...	3.544	2.874	52634508	513.7E6	16.902	17.251
28)	SA Decachlor...	9.068	8.061	98897682	710.3E6	21.141	23.450
Target Compounds							
2)	A alpha-BHC	3.994	3.386	320.2E6	2278.9E6	44.607	44.600
3)	MA gamma-BHC...	4.325	3.722	300.1E6	2116.4E6	44.135	44.794
4)	MA Heptachlor	4.923	4.074	293.0E6	2048.9E6	52.417	45.936
5)	MB Aldrin	5.264	4.360	291.7E6	2086.2E6	44.560	45.039
6)	B beta-BHC	4.512	4.018	114.1E6	888.1E6	43.546	44.785
7)	B delta-BHC	4.760	4.254	303.6E6	2159.0E6	44.903	45.247
8)	Heptachlo...	5.685	4.863	259.8E6	1917.3E6	44.876	44.965
9)	A Endosulfan I	6.068	5.238	246.2E6	1750.2E6	44.473	44.432
10)	B gamma-Chl...	5.940	5.116	261.6E6	2056.0E6	44.100	45.740
11)	B alpha-Chl...	6.021	5.181	265.1E6	1963.3E6	42.888	45.513
12)	B 4,4'-DDE	6.191	5.365	233.3E6	2011.4E6	43.798	45.883
13)	MA Dieldrin	6.341	5.503	262.5E6	2036.4E6	45.015	46.090
14)	MA Endrin	6.569	5.780	221.1E6	1865.4E6	44.634	46.066
15)	B Endosulfa...	6.782	6.072	227.9E6	1740.7E6	45.571	46.350
16)	A 4,4'-DDD	6.701	5.920	191.9E6	1703.8E6	47.337	46.758
17)	MA 4,4'-DDT	7.016	6.174	190.5E6	1666.2E6	46.349	47.506
18)	B Endrin al...	6.910	6.250	169.0E6	1312.2E6	46.134	47.383
19)	B Endosulfa...	7.146	6.474	206.0E6	1692.4E6	44.405	47.214
20)	A Methoxychlor	7.490	6.745	97041864	831.1E6	45.654	47.687
21)	B Endrin ke...	7.627	6.983	222.9E6	1833.6E6	45.881	48.613
22)	Mirex	8.109	7.176	152.3E6	1293.2E6	47.581	50.336
23)	Chlordane-1	0.000	3.887	0	2399805	N.D.	1.926 #
24)	Chlordane-2	5.264f	4.497	291.7E6	59158362	1510.611	45.349 #
25)	Chlordane-3	5.940	5.116	261.6E6	2056.0E6	342.922	528.314 #
26)	Chlordane-4	6.021	5.181	265.1E6	1963.3E6	273.569	587.608 #
27)	Chlordane-5	0.000	6.072	0	1740.7E6	N.D.	1179.316 #

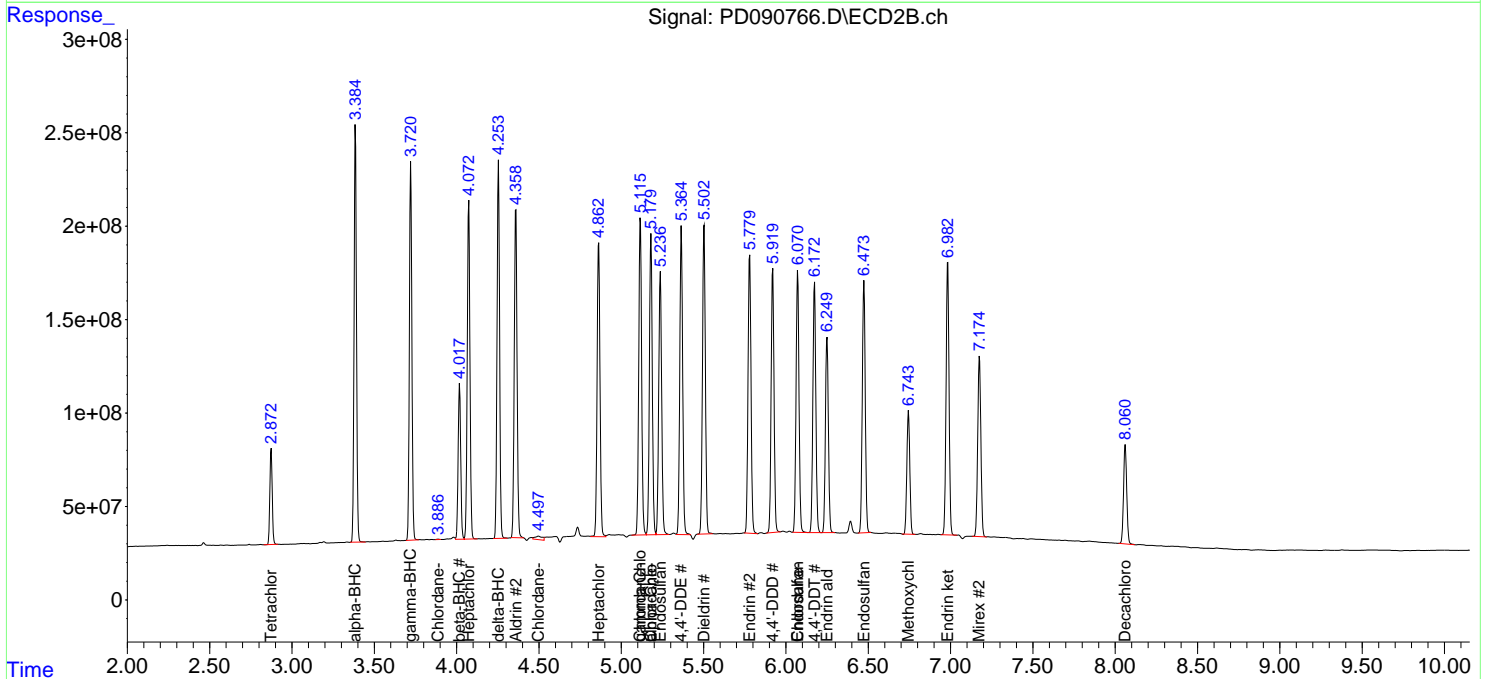
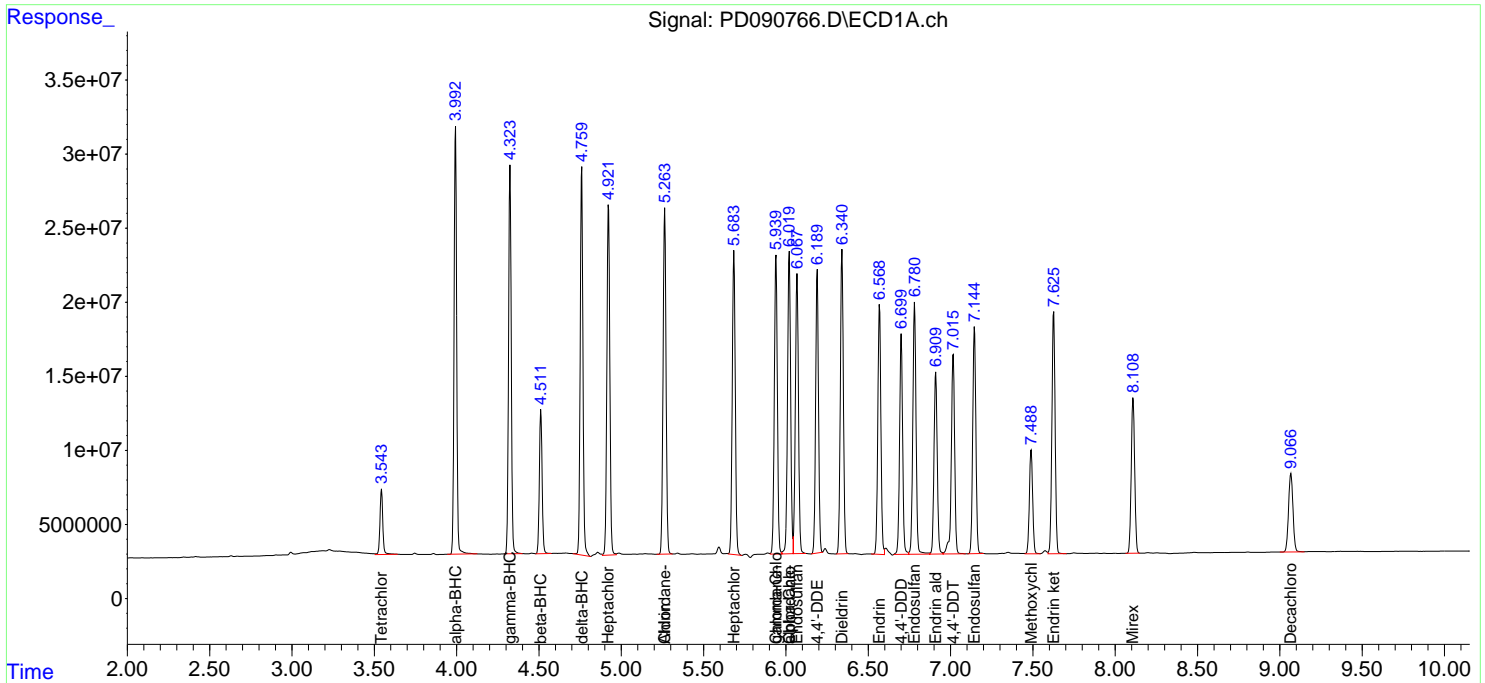
(f)=RT Delta > 1/2 Window (#)=Amounts differ by > 25% (m)=manual int.

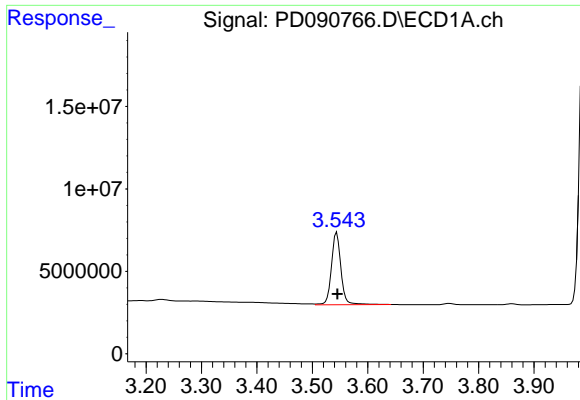
Data Path : Z:\pestpcbsrv\HPCHEM1\ECD_D\Data\PD102225\
 Data File : PD090766.D
 Signal(s) : Signal #1: ECD1A.ch Signal #2: ECD2B.ch
 Acq On : 22 Oct 2025 17:44
 Operator : AR\AJ
 Sample : PB170218BS
 Misc :
 ALS Vial : 13 Sample Multiplier: 1

Instrument :
 ECD_D
 ClientSampleId :
 PB170218BS

Integration File signal 1: autoint1.e
 Integration File signal 2: autoint2.e
 Quant Time: Oct 23 14:23:13 2025
 Quant Method : Z:\pestpcbsrv\HPCHEM1\ECD_D\Method\PD101725.M
 Quant Title : GC Extractables
 QLast Update : Fri Oct 17 17:43:28 2025
 Response via : Initial Calibration
 Integrator: ChemStation

Volume Inj. : 1 µl
 Signal #1 Phase : ZB-MR1 Signal #2 Phase: ZB-MR2
 Signal #1 Info : 30M x 0.32mm x0.5 Signal #2 Info : 30M x 0.32mm x 0.25µm

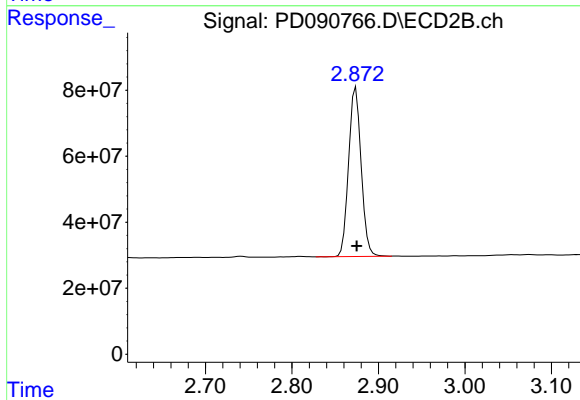




#1 Tetrachloro-m-xylene

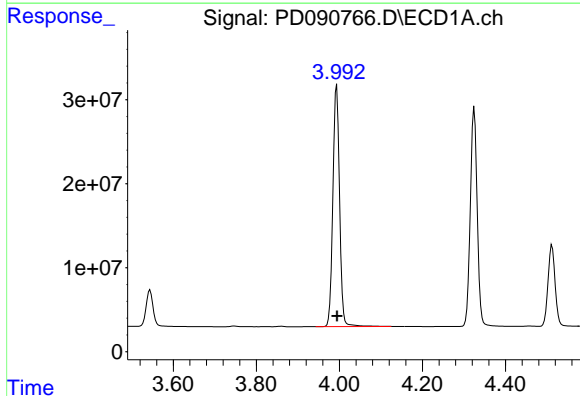
R.T.: 3.544 min
 Delta R.T.: 0.000 min
 Response: 52634508
 Conc: 16.90 ng/ml

Instrument :
 ECD_D
 ClientSampleId :
 PB170218BS



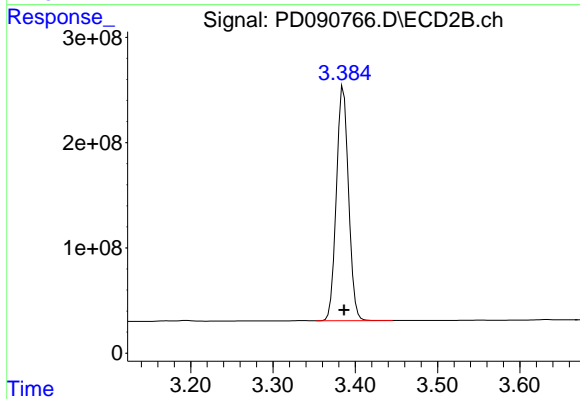
#1 Tetrachloro-m-xylene

R.T.: 2.874 min
 Delta R.T.: 0.000 min
 Response: 513696597
 Conc: 17.25 ng/ml



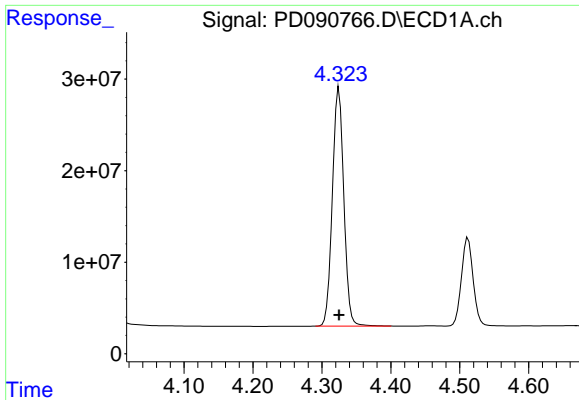
#2 alpha-BHC

R.T.: 3.994 min
 Delta R.T.: 0.000 min
 Response: 320152577
 Conc: 44.61 ng/ml



#2 alpha-BHC

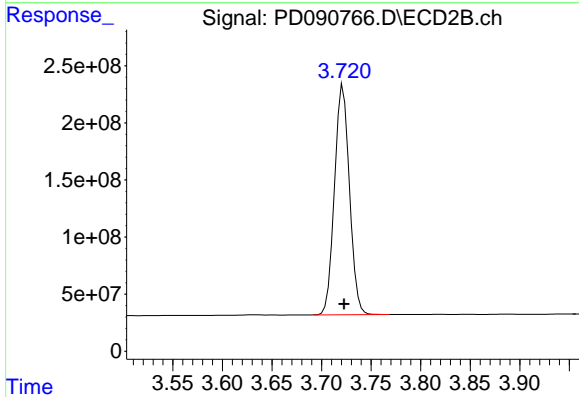
R.T.: 3.386 min
 Delta R.T.: 0.000 min
 Response: 2278856332
 Conc: 44.60 ng/ml



#3 gamma-BHC (Lindane)

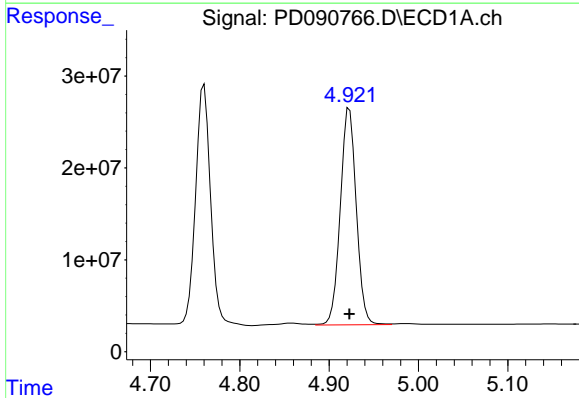
R.T.: 4.325 min
 Delta R.T.: 0.000 min
 Response: 300068003
 Conc: 44.14 ng/ml

Instrument :
 ECD_D
 ClientSampleId :
 PB170218BS



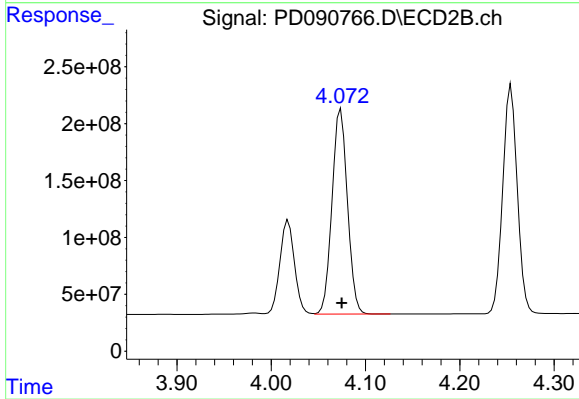
#3 gamma-BHC (Lindane)

R.T.: 3.722 min
 Delta R.T.: 0.000 min
 Response: 2116443245
 Conc: 44.79 ng/ml



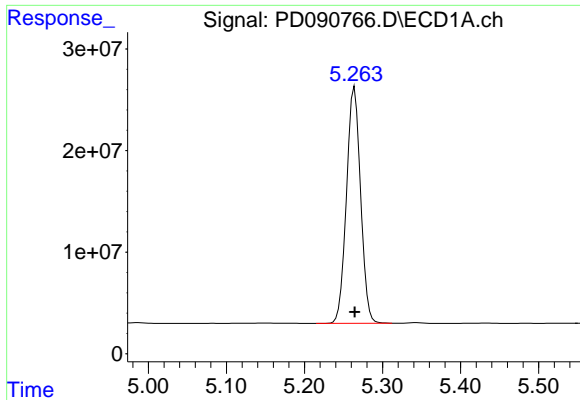
#4 Heptachlor

R.T.: 4.923 min
 Delta R.T.: 0.000 min
 Response: 292987577
 Conc: 52.42 ng/ml



#4 Heptachlor

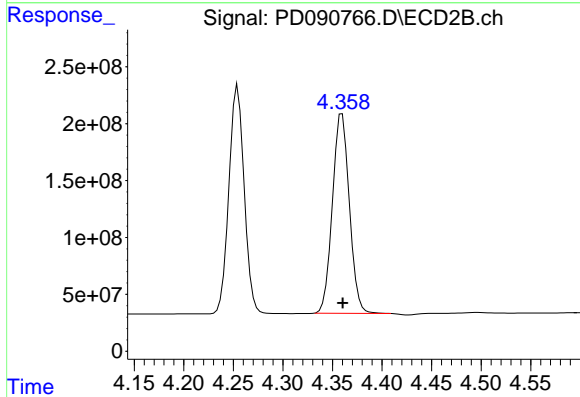
R.T.: 4.074 min
 Delta R.T.: -0.001 min
 Response: 2048857433
 Conc: 45.94 ng/ml



#5 Aldrin

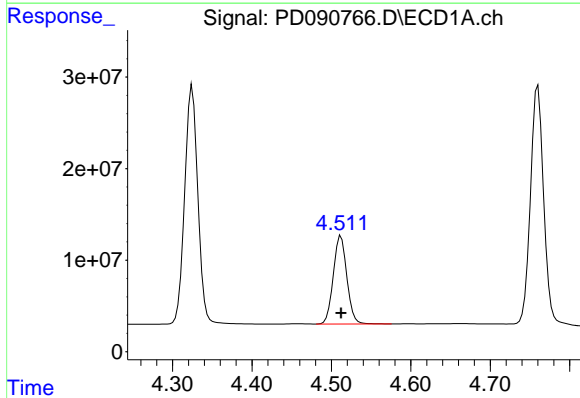
R.T.: 5.264 min
 Delta R.T.: 0.000 min
 Response: 291743831
 Conc: 44.56 ng/ml

Instrument :
 ECD_D
 ClientSampleId :
 PB170218BS



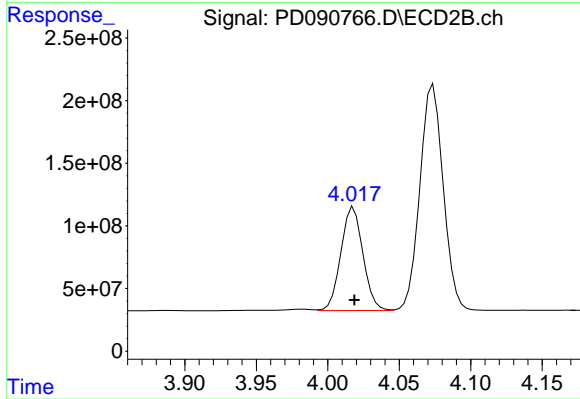
#5 Aldrin

R.T.: 4.360 min
 Delta R.T.: 0.000 min
 Response: 2086169786
 Conc: 45.04 ng/ml



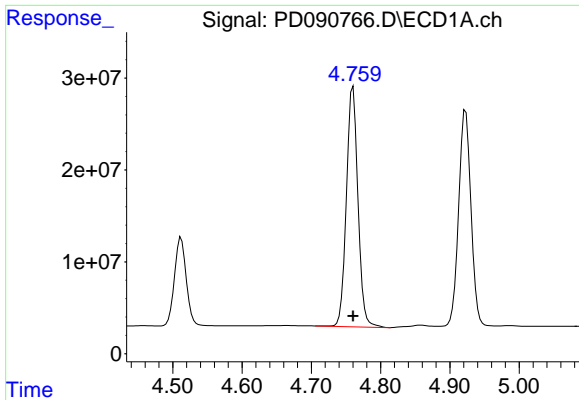
#6 beta-BHC

R.T.: 4.512 min
 Delta R.T.: 0.000 min
 Response: 114074449
 Conc: 43.55 ng/ml



#6 beta-BHC

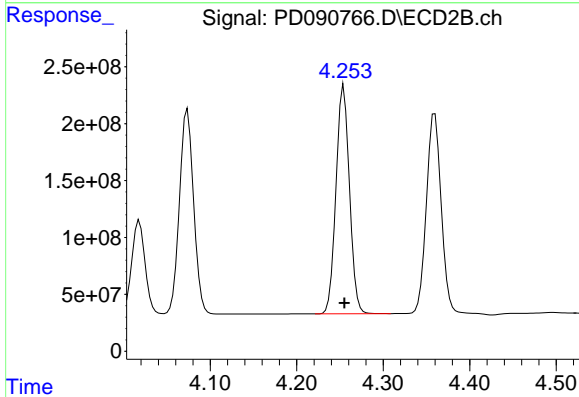
R.T.: 4.018 min
 Delta R.T.: 0.000 min
 Response: 888063021
 Conc: 44.78 ng/ml



#7 delta-BHC

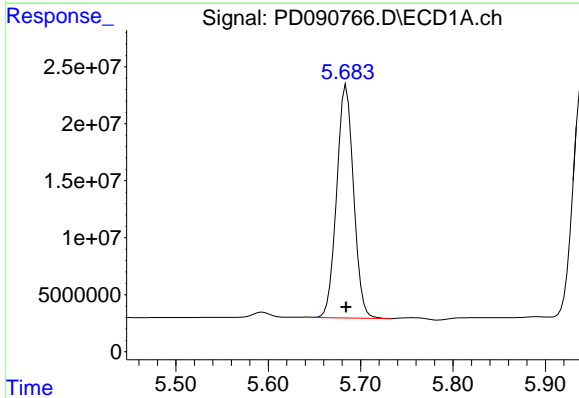
R.T.: 4.760 min
 Delta R.T.: 0.000 min
 Response: 303624561
 Conc: 44.90 ng/ml

Instrument :
 ECD_D
 ClientSampleId :
 PB170218BS



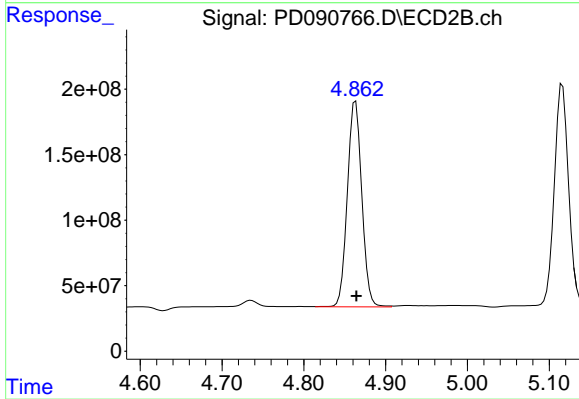
#7 delta-BHC

R.T.: 4.254 min
 Delta R.T.: 0.000 min
 Response: 2159015417
 Conc: 45.25 ng/ml



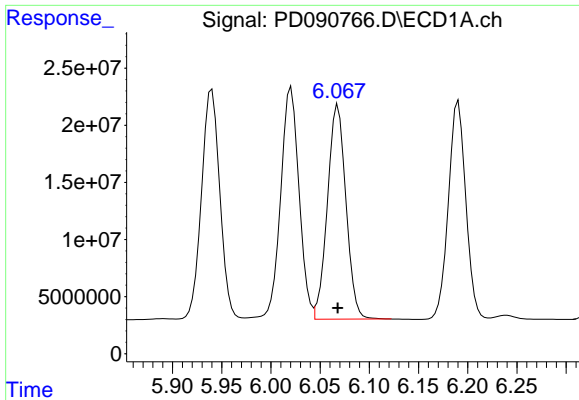
#8 Heptachlor epoxide

R.T.: 5.685 min
 Delta R.T.: 0.000 min
 Response: 259792175
 Conc: 44.88 ng/ml



#8 Heptachlor epoxide

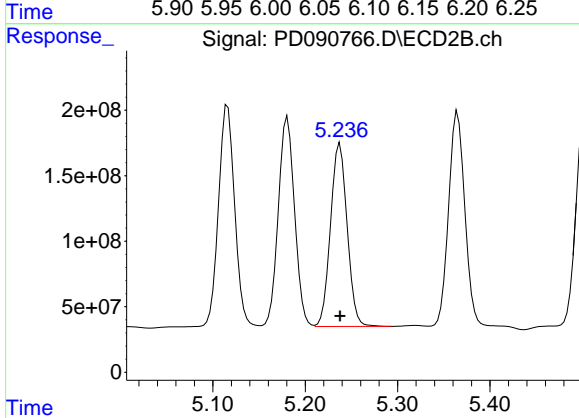
R.T.: 4.863 min
 Delta R.T.: 0.000 min
 Response: 1917252938
 Conc: 44.96 ng/ml



#9 Endosulfan I

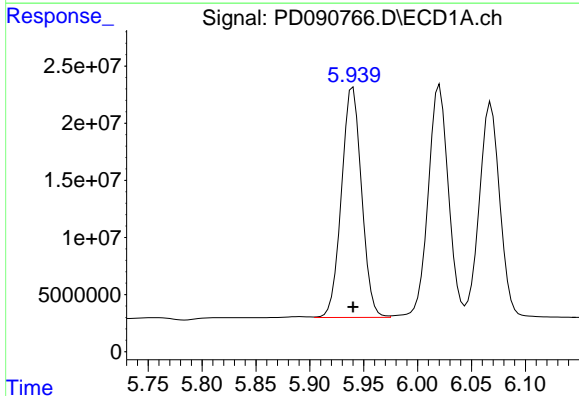
R.T.: 6.068 min
 Delta R.T.: 0.000 min
 Response: 246229756
 Conc: 44.47 ng/ml

Instrument :
 ECD_D
 ClientSampleId :
 PB170218BS



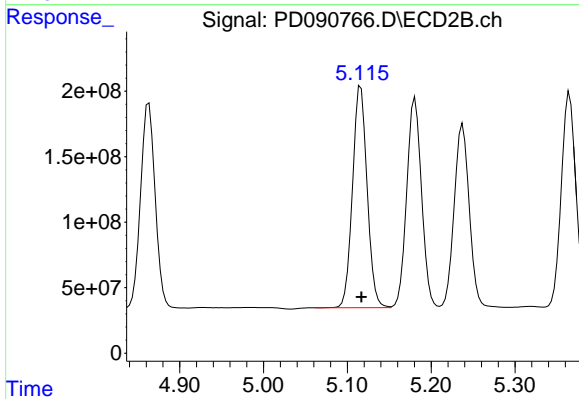
#9 Endosulfan I

R.T.: 5.238 min
 Delta R.T.: 0.000 min
 Response: 1750205973
 Conc: 44.43 ng/ml



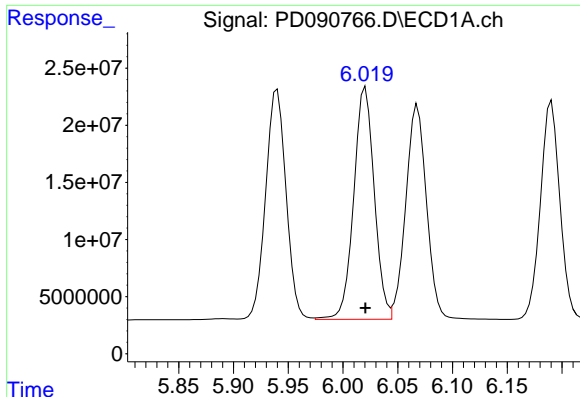
#10 gamma-Chlordane

R.T.: 5.940 min
 Delta R.T.: 0.000 min
 Response: 261567870
 Conc: 44.10 ng/ml



#10 gamma-Chlordane

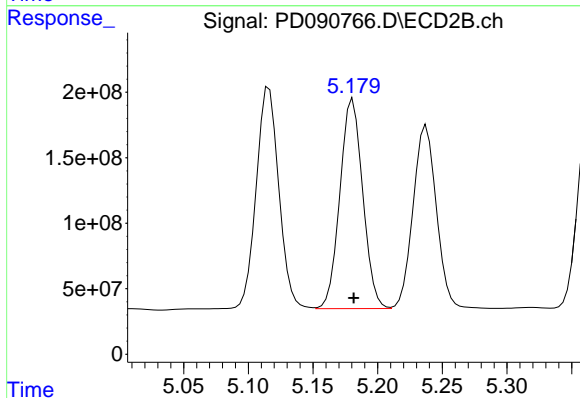
R.T.: 5.116 min
 Delta R.T.: 0.000 min
 Response: 2055971914
 Conc: 45.74 ng/ml



#11 alpha-Chlordane

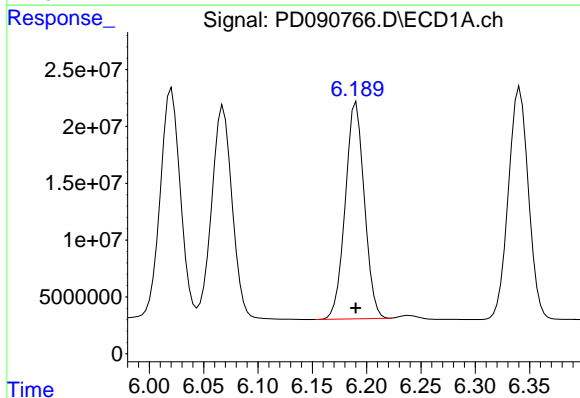
R.T.: 6.021 min
 Delta R.T.: 0.000 min
 Response: 265057438
 Conc: 42.89 ng/ml

Instrument :
 ECD_D
 ClientSampleId :
 PB170218BS



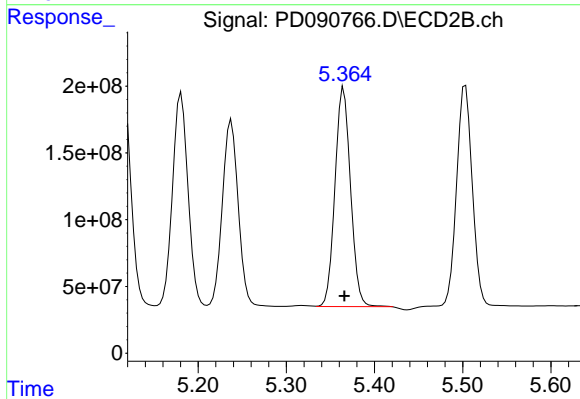
#11 alpha-Chlordane

R.T.: 5.181 min
 Delta R.T.: 0.000 min
 Response: 1963338026
 Conc: 45.51 ng/ml



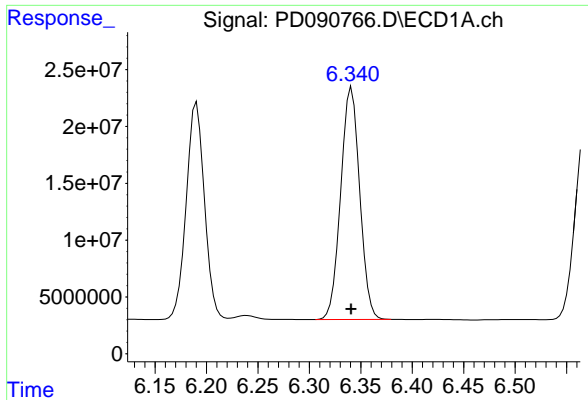
#12 4,4'-DDE

R.T.: 6.191 min
 Delta R.T.: 0.000 min
 Response: 233293526
 Conc: 43.80 ng/ml



#12 4,4'-DDE

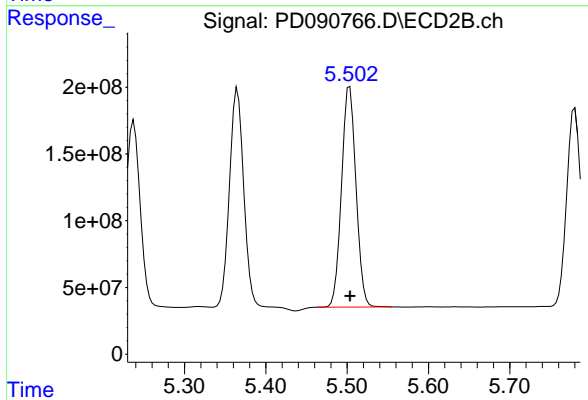
R.T.: 5.365 min
 Delta R.T.: 0.000 min
 Response: 2011446418
 Conc: 45.88 ng/ml



#13 Dieldrin

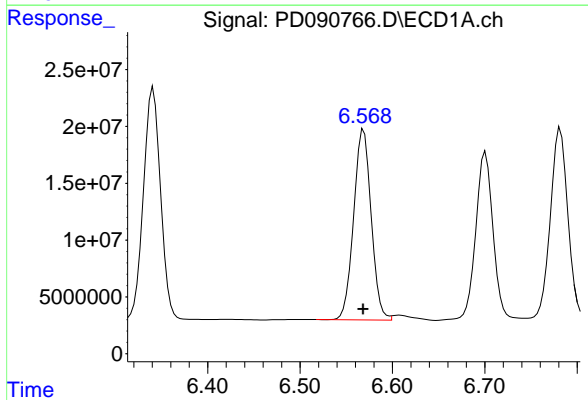
R.T.: 6.341 min
 Delta R.T.: 0.000 min
 Response: 262497456
 Conc: 45.01 ng/ml

Instrument :
 ECD_D
 ClientSampleId :
 PB170218BS



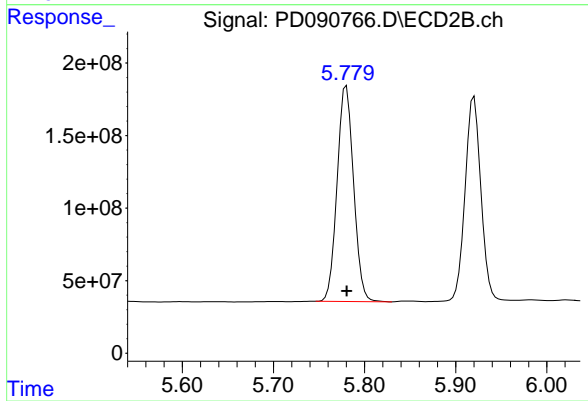
#13 Dieldrin

R.T.: 5.503 min
 Delta R.T.: 0.000 min
 Response: 2036418614
 Conc: 46.09 ng/ml



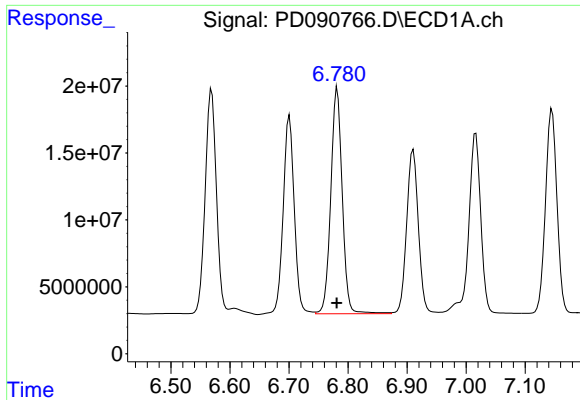
#14 Endrin

R.T.: 6.569 min
 Delta R.T.: 0.000 min
 Response: 221101640
 Conc: 44.63 ng/ml



#14 Endrin

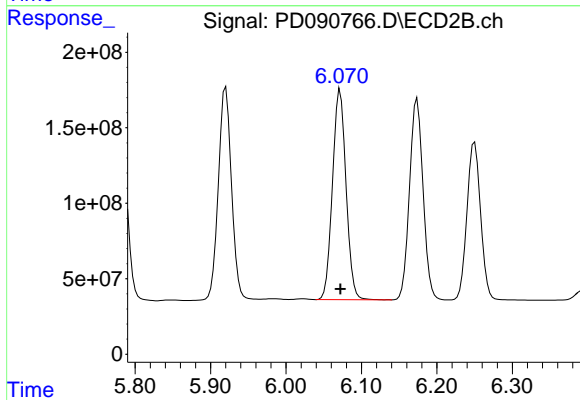
R.T.: 5.780 min
 Delta R.T.: 0.000 min
 Response: 1865403591
 Conc: 46.07 ng/ml



#15 Endosulfan II

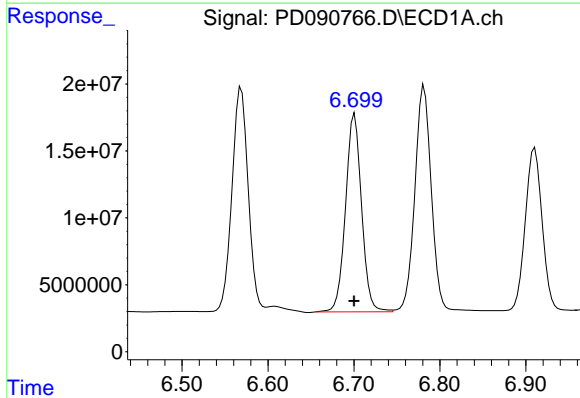
R.T.: 6.782 min
Delta R.T.: 0.000 min
Response: 227853899
Conc: 45.57 ng/ml

Instrument :
ECD_D
ClientSampleId :
PB170218BS



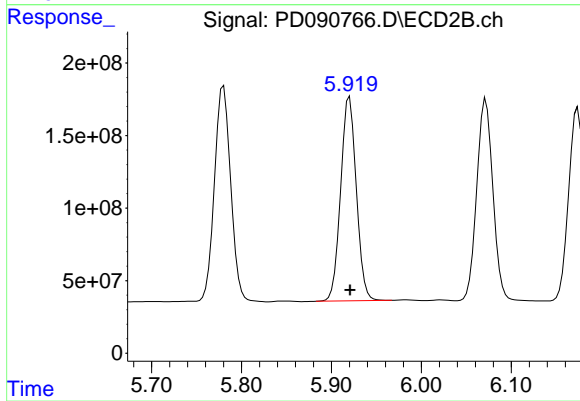
#15 Endosulfan II

R.T.: 6.072 min
Delta R.T.: 0.000 min
Response: 1740709751
Conc: 46.35 ng/ml



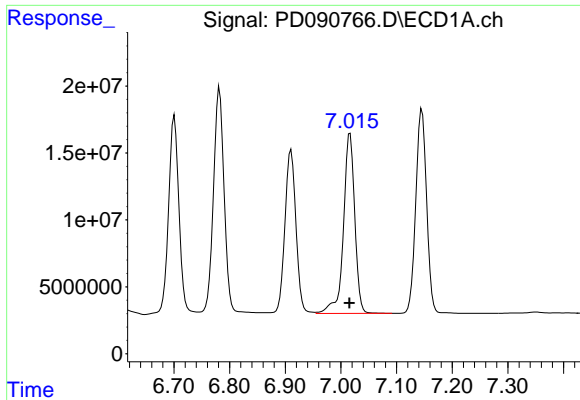
#16 4,4'-DDD

R.T.: 6.701 min
Delta R.T.: 0.000 min
Response: 191913986
Conc: 47.34 ng/ml



#16 4,4'-DDD

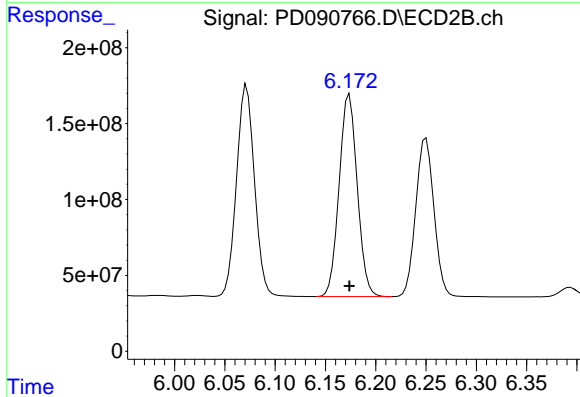
R.T.: 5.920 min
Delta R.T.: 0.000 min
Response: 1703774857
Conc: 46.76 ng/ml



#17 4,4'-DDT

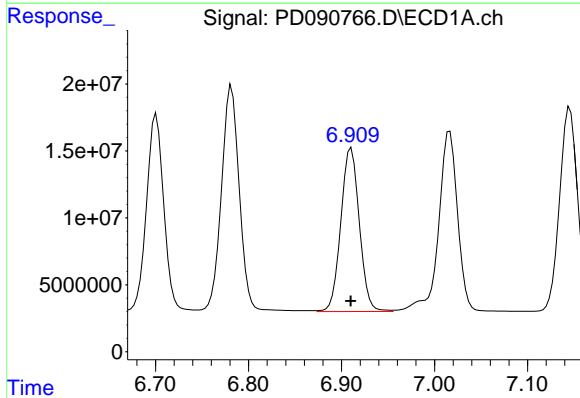
R.T.: 7.016 min
 Delta R.T.: 0.001 min
 Response: 190518247
 Conc: 46.35 ng/ml

Instrument :
 ECD_D
 ClientSampleId :
 PB170218BS



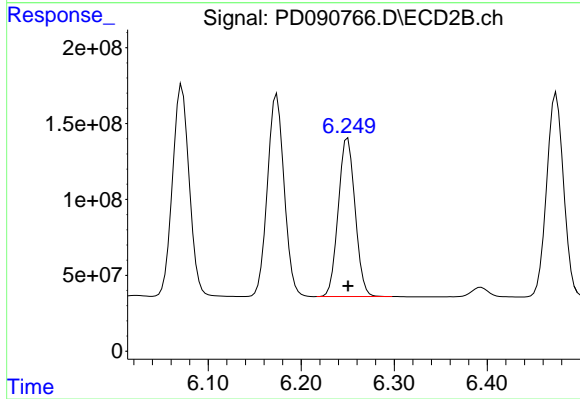
#17 4,4'-DDT

R.T.: 6.174 min
 Delta R.T.: 0.000 min
 Response: 1666168898
 Conc: 47.51 ng/ml



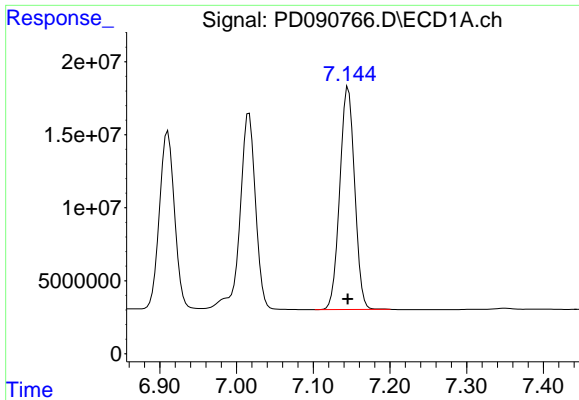
#18 Endrin aldehyde

R.T.: 6.910 min
 Delta R.T.: 0.000 min
 Response: 168974005
 Conc: 46.13 ng/ml



#18 Endrin aldehyde

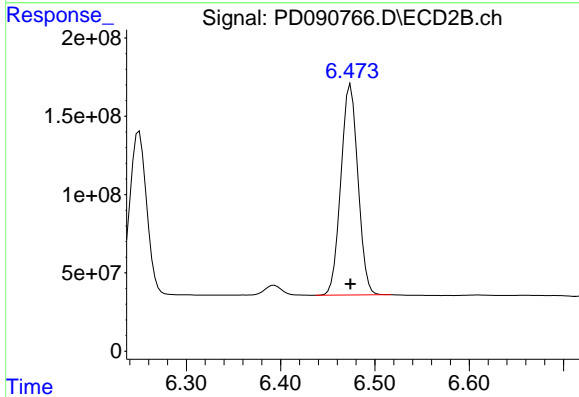
R.T.: 6.250 min
 Delta R.T.: 0.000 min
 Response: 1312160144
 Conc: 47.38 ng/ml



#19 Endosulfan Sulfate

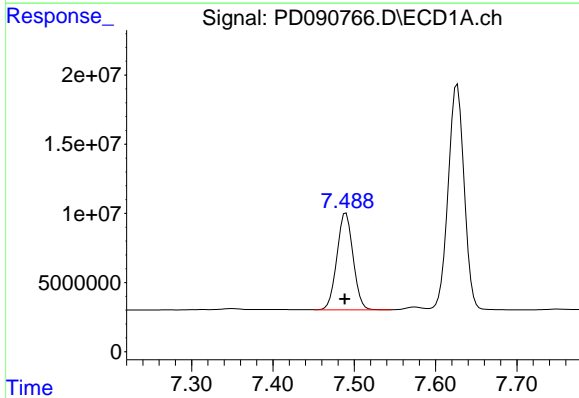
R.T.: 7.146 min
 Delta R.T.: 0.000 min
 Response: 205958177
 Conc: 44.40 ng/ml

Instrument :
 ECD_D
 ClientSampleId :
 PB170218BS



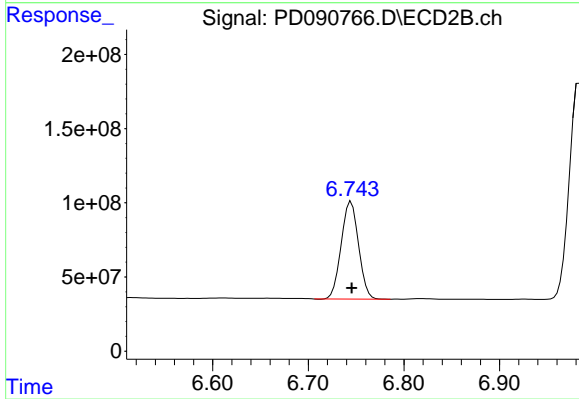
#19 Endosulfan Sulfate

R.T.: 6.474 min
 Delta R.T.: 0.000 min
 Response: 1692390467
 Conc: 47.21 ng/ml



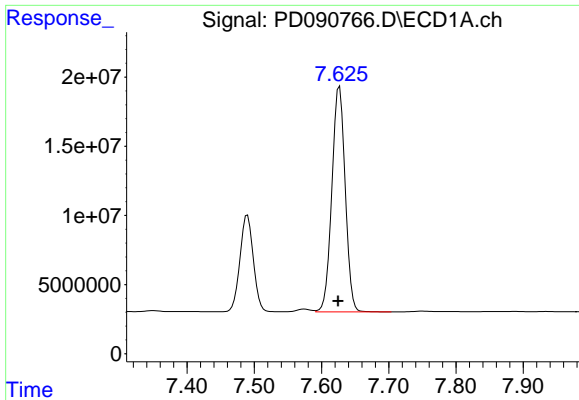
#20 Methoxychlor

R.T.: 7.490 min
 Delta R.T.: 0.002 min
 Response: 97041864
 Conc: 45.65 ng/ml



#20 Methoxychlor

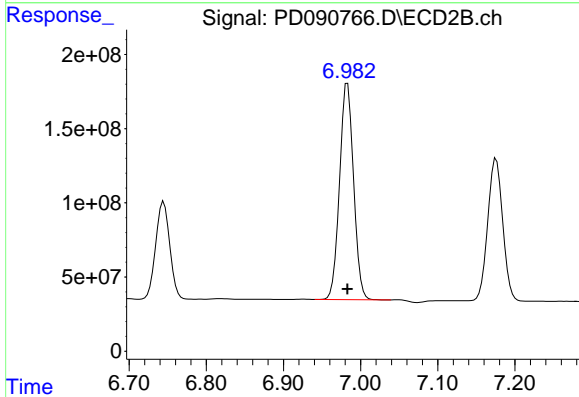
R.T.: 6.745 min
 Delta R.T.: 0.000 min
 Response: 831080841
 Conc: 47.69 ng/ml



#21 Endrin ketone

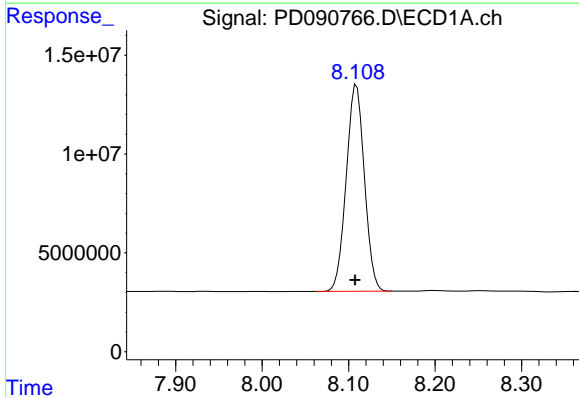
R.T.: 7.627 min
 Delta R.T.: 0.002 min
 Response: 222930485
 Conc: 45.88 ng/ml

Instrument :
 ECD_D
 ClientSampleId :
 PB170218BS



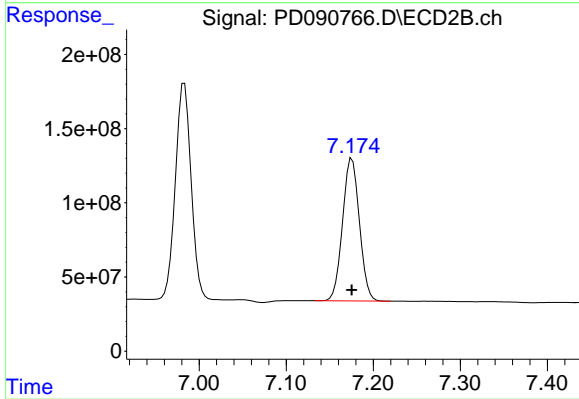
#21 Endrin ketone

R.T.: 6.983 min
 Delta R.T.: 0.000 min
 Response: 1833563069
 Conc: 48.61 ng/ml



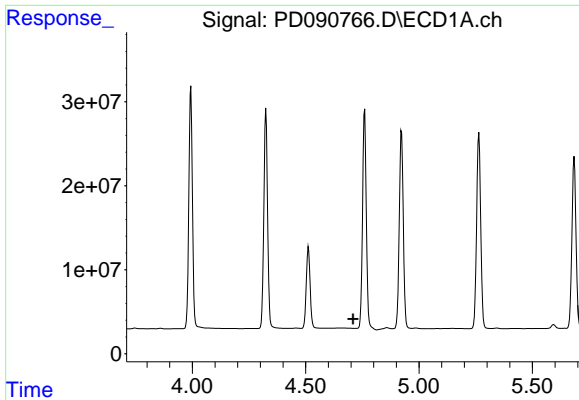
#22 Mirex

R.T.: 8.109 min
 Delta R.T.: 0.002 min
 Response: 152300539
 Conc: 47.58 ng/ml



#22 Mirex

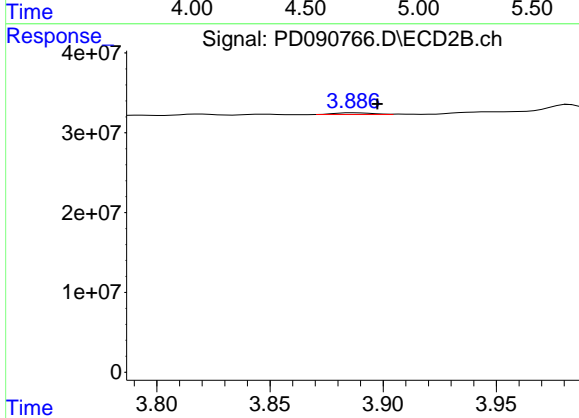
R.T.: 7.176 min
 Delta R.T.: 0.000 min
 Response: 1293166461
 Conc: 50.34 ng/ml



#23 Chlordane-1

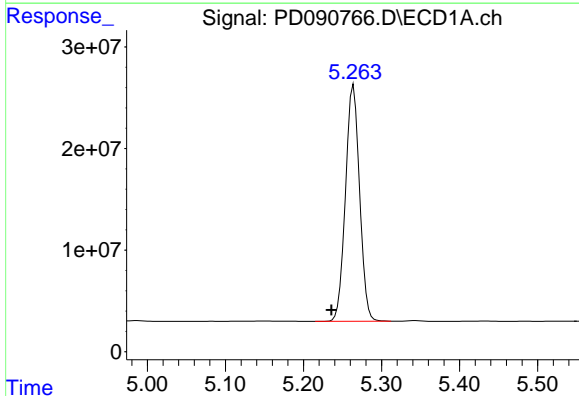
R.T.: 0.000 min
 Exp R.T.: 4.709 min
 Response: 0
 Conc: N.D.

Instrument :
 ECD_D
 ClientSampleId :
 PB170218BS



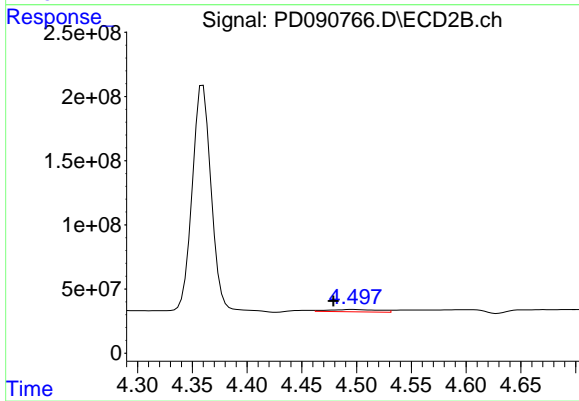
#23 Chlordane-1

R.T.: 3.887 min
 Delta R.T.: -0.010 min
 Response: 2399805
 Conc: 1.93 ng/ml



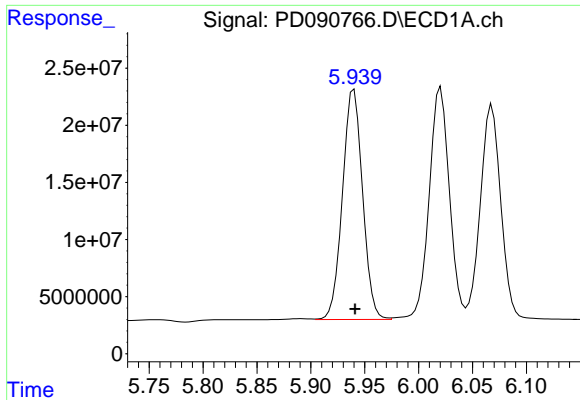
#24 Chlordane-2

R.T.: 5.264 min
 Delta R.T.: 0.028 min
 Response: 291743831
 Conc: 1510.61 ng/ml



#24 Chlordane-2

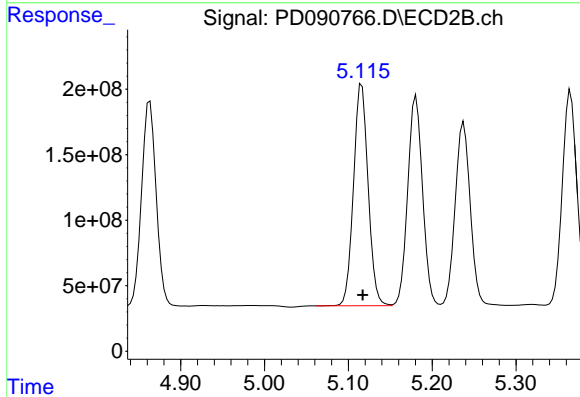
R.T.: 4.497 min
 Delta R.T.: 0.018 min
 Response: 59158362
 Conc: 45.35 ng/ml



#25 Chlordane-3

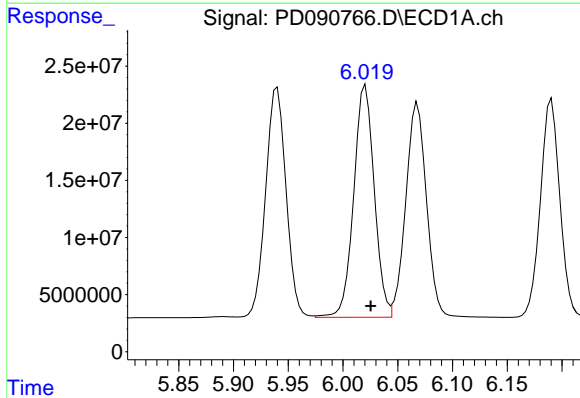
R.T.: 5.940 min
 Delta R.T.: -0.001 min
 Response: 261567870
 Conc: 342.92 ng/ml

Instrument :
 ECD_D
 ClientSampleId :
 PB170218BS



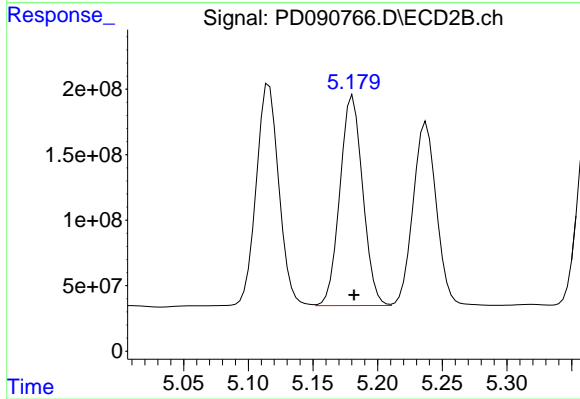
#25 Chlordane-3

R.T.: 5.116 min
 Delta R.T.: -0.001 min
 Response: 2055971914
 Conc: 528.31 ng/ml



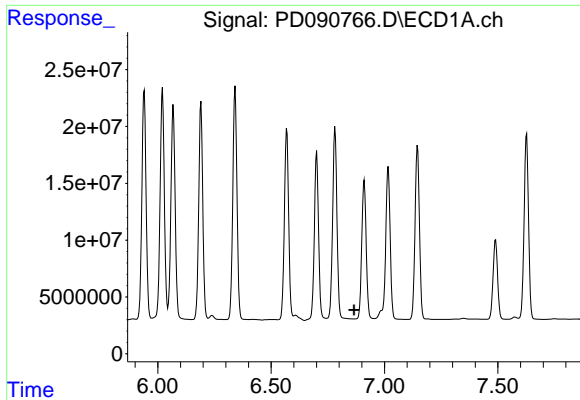
#26 Chlordane-4

R.T.: 6.021 min
 Delta R.T.: -0.005 min
 Response: 265057438
 Conc: 273.57 ng/ml



#26 Chlordane-4

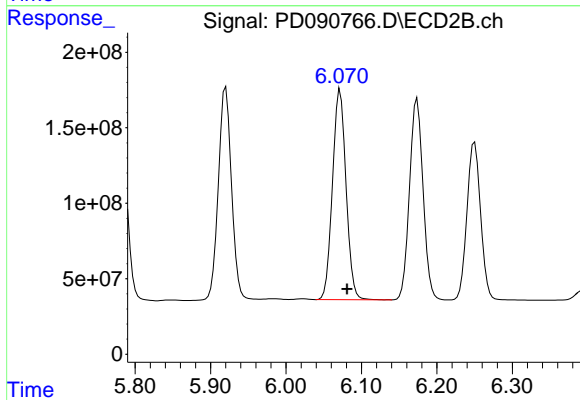
R.T.: 5.181 min
 Delta R.T.: 0.000 min
 Response: 1963338026
 Conc: 587.61 ng/ml



#27 Chlordane-5

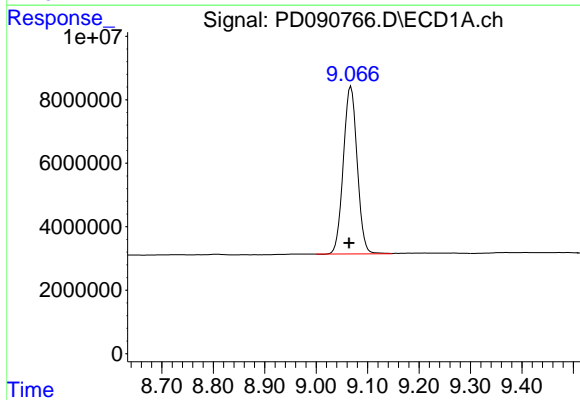
R.T.: 0.000 min
 Exp R.T.: 6.866 min
 Response: 0
 Conc: N.D.

Instrument :
 ECD_D
 ClientSampleId :
 PB170218BS



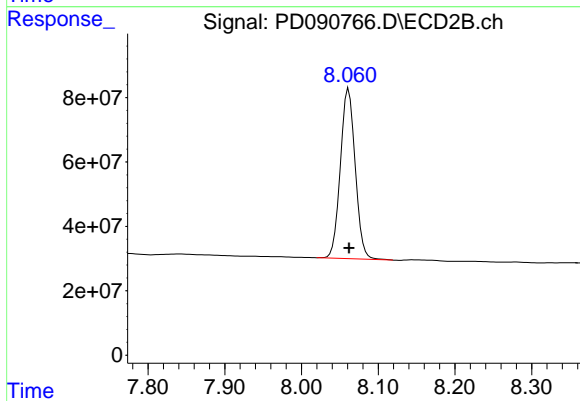
#27 Chlordane-5

R.T.: 6.072 min
 Delta R.T.: -0.009 min
 Response: 1740709751
 Conc: 1179.32 ng/ml



#28 Decachlorobiphenyl

R.T.: 9.068 min
 Delta R.T.: 0.003 min
 Response: 98897682
 Conc: 21.14 ng/ml



#28 Decachlorobiphenyl

R.T.: 8.061 min
 Delta R.T.: 0.000 min
 Response: 710328446
 Conc: 23.45 ng/ml