

Data Path : Z:\pestpcbsrv\HPCHEM1\ECD_D\Data\PD102225\
 Data File : PD090769.D
 Signal(s) : Signal #1: ECD1A.ch Signal #2: ECD2B.ch
 Acq On : 22 Oct 2025 18:25
 Operator : AR\AJ
 Sample : Q3399-01MSD
 Misc :
 ALS Vial : 16 Sample Multiplier: 1

Instrument :
 ECD_D
 ClientSampleId :
 COMP-ROLLOFFMSD

Integration File signal 1: autoint1.e
 Integration File signal 2: autoint2.e
 Quant Time: Oct 23 14:23:51 2025
 Quant Method : Z:\pestpcbsrv\HPCHEM1\ECD_D\Method\PD101725.M
 Quant Title : GC Extractables
 QLast Update : Fri Oct 17 17:43:28 2025
 Response via : Initial Calibration
 Integrator: ChemStation

Volume Inj. : 1 µl
 Signal #1 Phase : ZB-MR2 Signal #2 Phase: ZB-MR2
 Signal #1 Info : 30M x 0.32mm x0.5 Signal #2 Info : 30M x 0.32mm x 0.25µm

	Compound	RT#1	RT#2	Resp#1	Resp#2	ng/ml	ng/ml

System Monitoring Compounds							
1)	SA Tetrachlo...	3.544	2.874	89753448	578.4E6	28.821	19.425 #
28)	SA Decachlor...	9.068	8.062	67109061	476.8E6	14.346	15.741
Target Compounds							
2)	A alpha-BHC	3.994	3.386	358.4E6	2475.1E6	49.931	48.440
3)	MA gamma-BHC...	4.325	3.722	331.9E6	2281.5E6	48.810	48.287
4)	MA Heptachlor	4.923	4.075	322.2E6	2211.8E6	57.644	49.589
5)	MB Aldrin	5.264	4.360	320.3E6	2251.0E6	48.919	48.597
6)	B beta-BHC	4.512	4.019	125.7E6	951.4E6	47.986	47.977
7)	B delta-BHC	4.760	4.255	337.7E6	2326.8E6	49.941	48.763
8)	B Heptachlo...	5.685	4.864	286.7E6	2057.0E6	49.525	48.243
9)	A Endosulfan I	6.069	5.239	270.0E6	1908.1E6	48.767	48.440
10)	B gamma-Chl...	5.940	5.117	287.5E6	2211.2E6	48.476	49.194
11)	B alpha-Chl...	6.022	5.181	296.3E6	2125.8E6	47.945	49.279
12)	B 4,4'-DDE	6.191	5.365	260.3E6	2166.5E6	48.861	49.420
13)	MA Dieldrin	6.342	5.504	289.1E6	2168.8E6	49.583	49.086
14)	MA Endrin	6.569	5.781	244.9E6	1970.4E6	49.430	48.660
15)	B Endosulfa...	6.782	6.072	231.9E6	1885.7E6	46.374	50.211
16)	A 4,4'-DDD	6.701	5.921	204.9E6	1742.0E6	50.544	47.806
17)	MA 4,4'-DDT	7.017	6.174	211.0E6	1863.8E6	51.335	53.142
18)	B Endrin al...	6.910	6.251	178.4E6	1394.3E6	48.714	50.347
19)	B Endosulfa...	7.146	6.474	222.2E6	1818.0E6	47.910	50.718
20)	A Methoxychlor	7.490	6.745	105.1E6	908.4E6	49.463	52.124
21)	B Endrin ke...	7.626	6.983	241.7E6	1962.1E6	49.740	52.020
22)	Mirex	8.109	7.175	151.1E6	1297.4E6	47.218	50.499
23)	Chlordane-1	0.000	3.893	0	4684974	N.D.	3.759 #
24)	Chlordane-2	5.213f	4.496	1562593	28726309	8.091	22.021 #
25)	Chlordane-3	5.940	5.117	287.5E6	2211.2E6	376.947	568.211 #
26)	Chlordane-4	6.022	5.181	296.3E6	2125.8E6	305.826	636.224 #
27)	Chlordane-5	0.000	6.072	0	1885.7E6	N.D.	1277.550 #

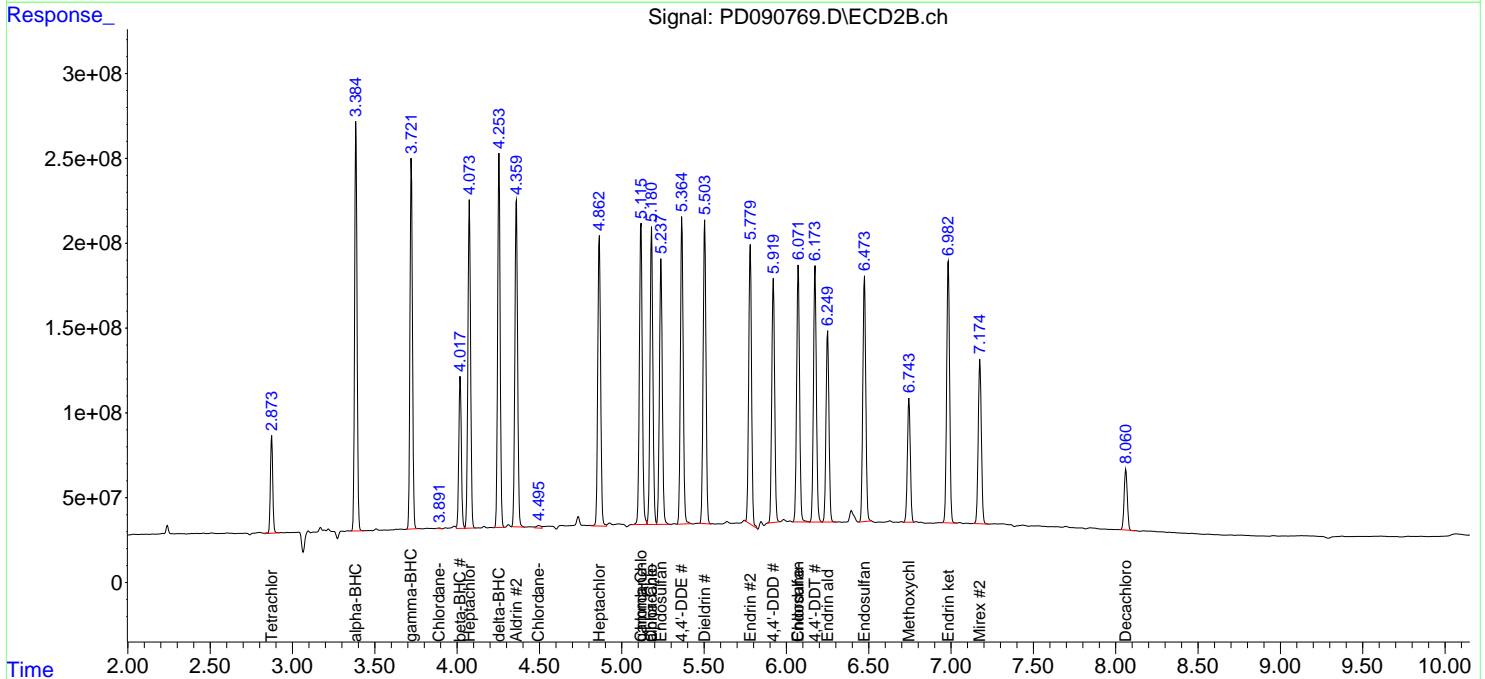
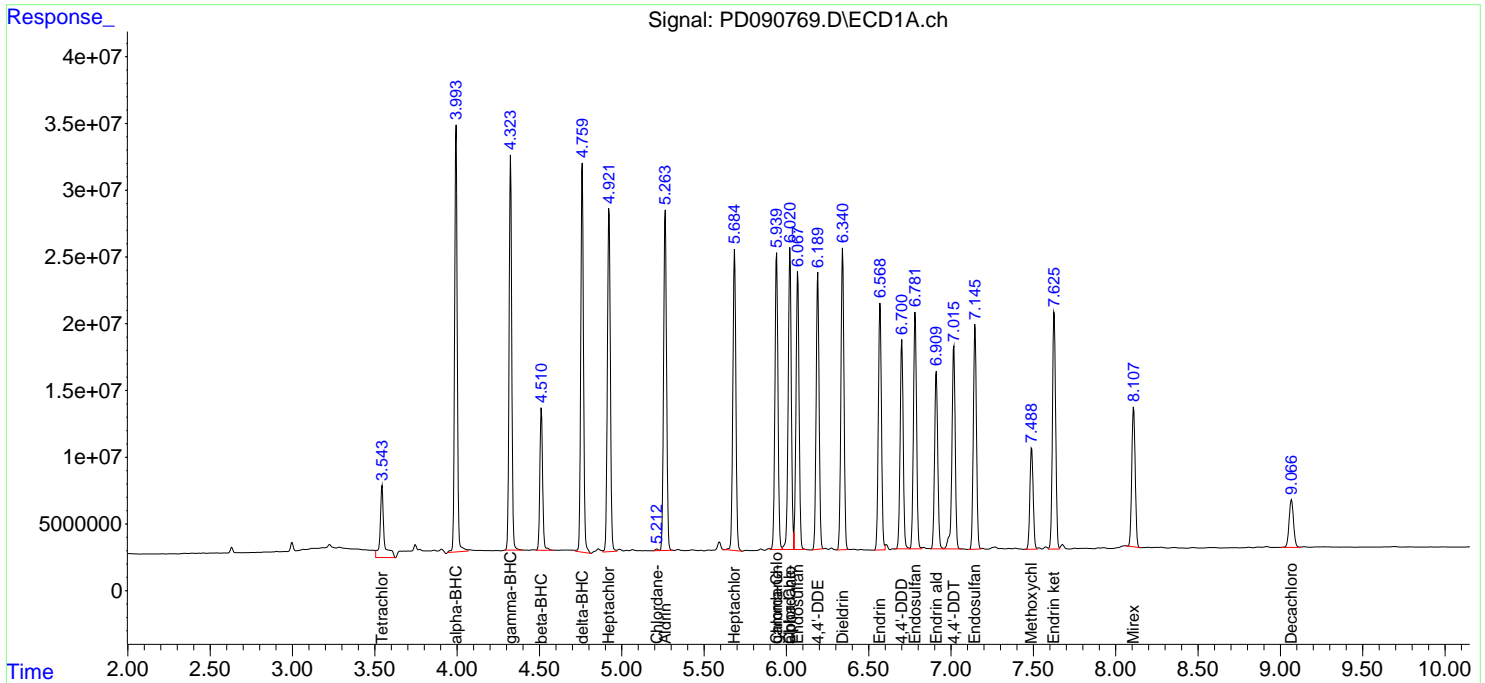
(f)=RT Delta > 1/2 Window (#)=Amounts differ by > 25% (m)=manual int.

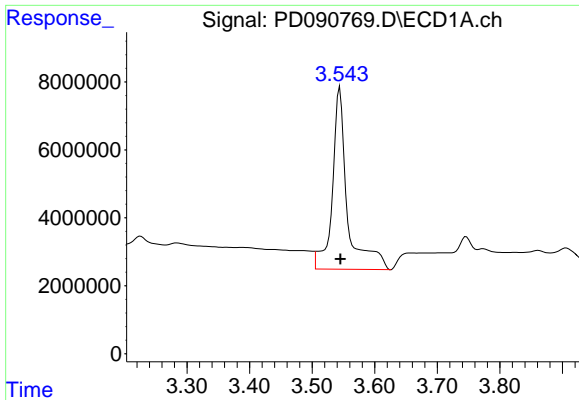
Data Path : Z:\pestpcbsrv\HPCHEM1\ECD_D\Data\PD102225\
 Data File : PD090769.D
 Signal(s) : Signal #1: ECD1A.ch Signal #2: ECD2B.ch
 Acq On : 22 Oct 2025 18:25
 Operator : AR\AJ
 Sample : Q3399-01MSD
 Misc :
 ALS Vial : 16 Sample Multiplier: 1

Instrument :
 ECD_D
 ClientSampleId :
 COMP-ROLLOFFMSD

Integration File signal 1: autoint1.e
 Integration File signal 2: autoint2.e
 Quant Time: Oct 23 14:23:51 2025
 Quant Method : Z:\pestpcbsrv\HPCHEM1\ECD_D\Method\PD101725.M
 Quant Title : GC Extractables
 QLast Update : Fri Oct 17 17:43:28 2025
 Response via : Initial Calibration
 Integrator: ChemStation

Volume Inj. : 1 µl
 Signal #1 Phase : ZB-MR1 Signal #2 Phase: ZB-MR2
 Signal #1 Info : 30M x 0.32mm x0.5 Signal #2 Info : 30M x 0.32mm x 0.25µm

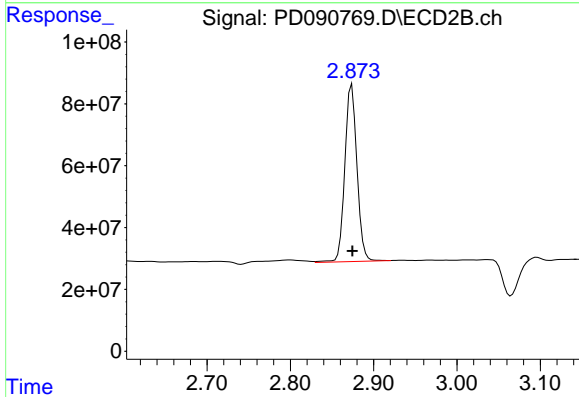




#1 Tetrachloro-m-xylene

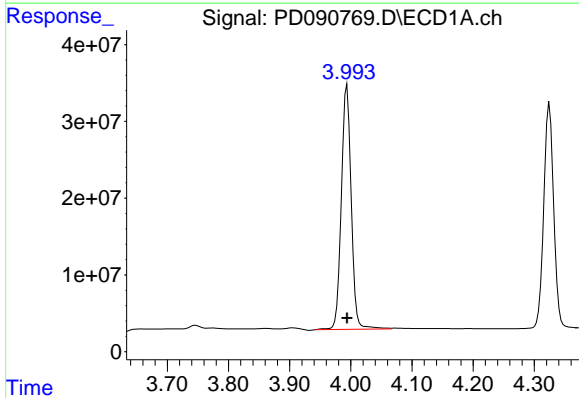
R.T.: 3.544 min
 Delta R.T.: 0.000 min
 Response: 89753448
 Conc: 28.82 ng/ml

Instrument :
 ECD_D
 ClientSampleId :
 COMP-ROLLOFFMSD



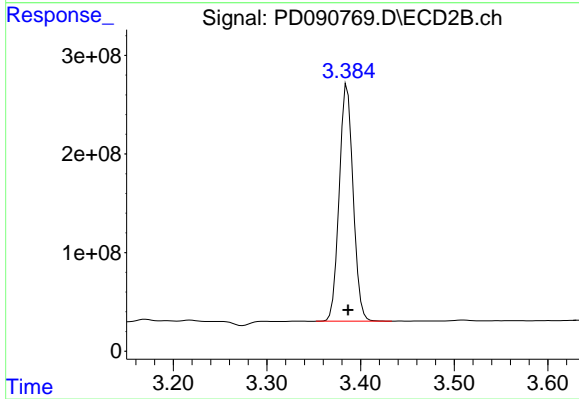
#1 Tetrachloro-m-xylene

R.T.: 2.874 min
 Delta R.T.: 0.000 min
 Response: 578415516
 Conc: 19.42 ng/ml



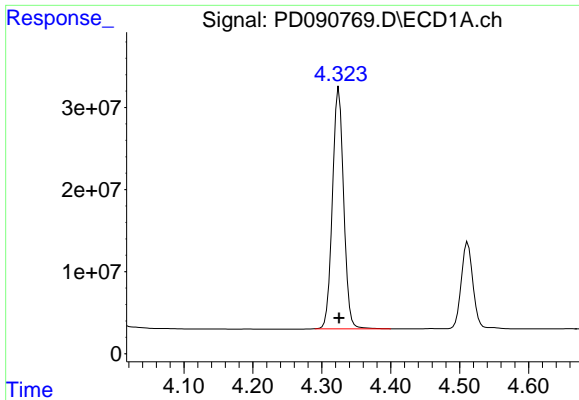
#2 alpha-BHC

R.T.: 3.994 min
 Delta R.T.: 0.000 min
 Response: 358360933
 Conc: 49.93 ng/ml



#2 alpha-BHC

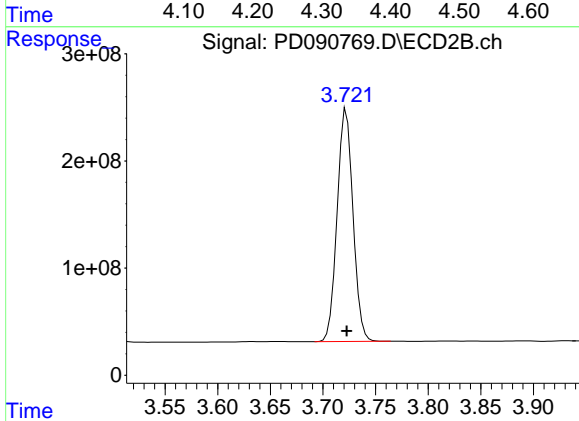
R.T.: 3.386 min
 Delta R.T.: 0.000 min
 Response: 2475094258
 Conc: 48.44 ng/ml



#3 gamma-BHC (Lindane)

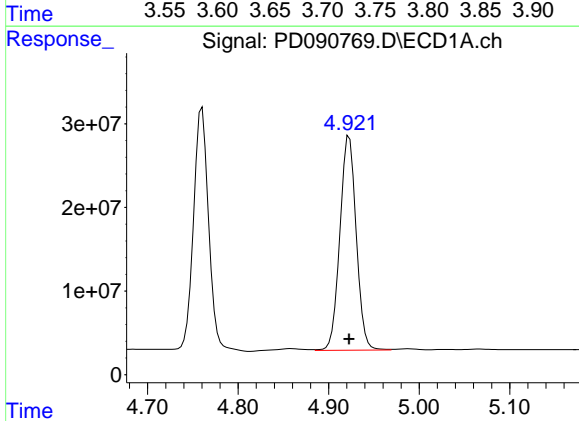
R.T.: 4.325 min
 Delta R.T.: 0.000 min
 Response: 331851325
 Conc: 48.81 ng/ml

Instrument :
 ECD_D
 ClientSampleId :
 COMP-ROLLOFFMSD



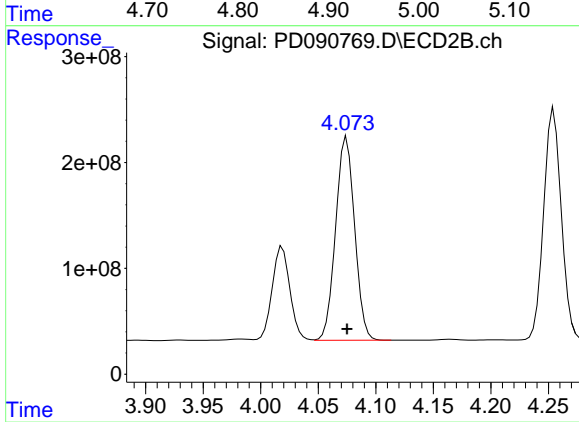
#3 gamma-BHC (Lindane)

R.T.: 3.722 min
 Delta R.T.: 0.000 min
 Response: 2281514650
 Conc: 48.29 ng/ml



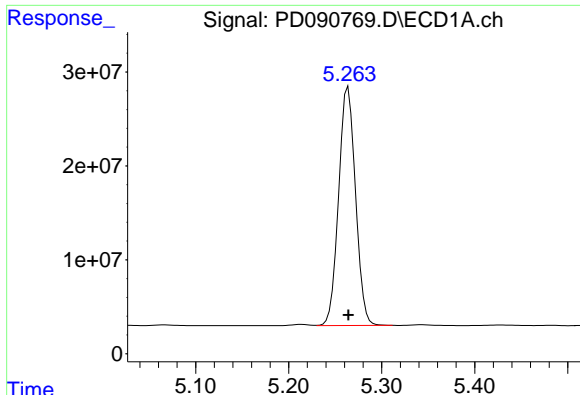
#4 Heptachlor

R.T.: 4.923 min
 Delta R.T.: 0.000 min
 Response: 322201675
 Conc: 57.64 ng/ml



#4 Heptachlor

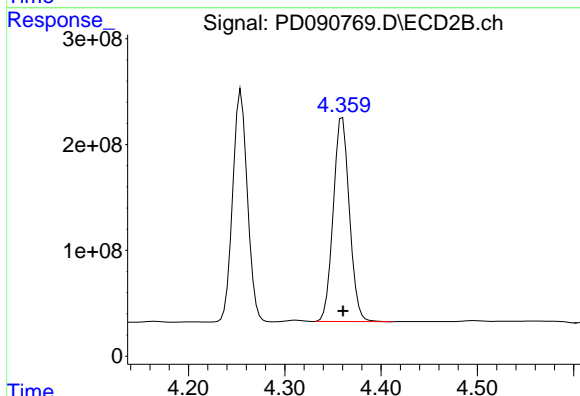
R.T.: 4.075 min
 Delta R.T.: 0.000 min
 Response: 2211816269
 Conc: 49.59 ng/ml



#5 Aldrin

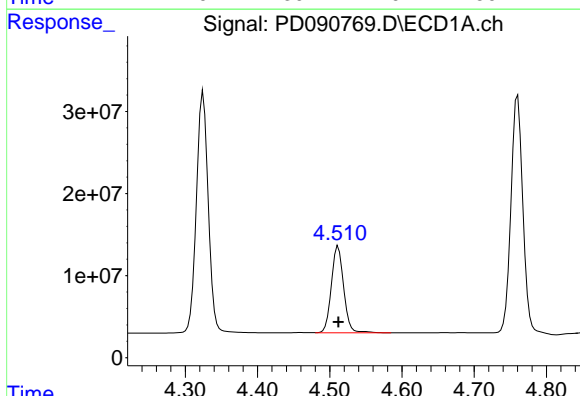
R.T.: 5.264 min
 Delta R.T.: 0.000 min
 Response: 320284321
 Conc: 48.92 ng/ml

Instrument :
 ECD_D
 ClientSampleId :
 COMP-ROLLOFFMSD



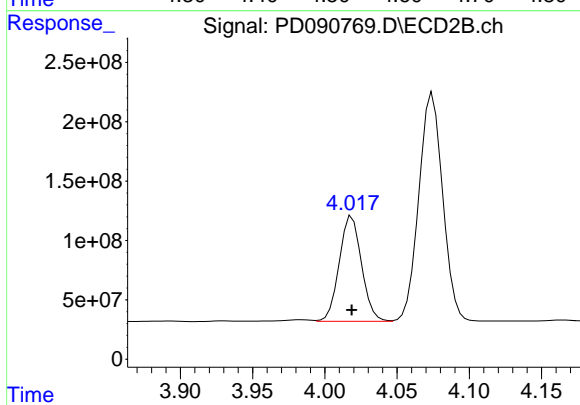
#5 Aldrin

R.T.: 4.360 min
 Delta R.T.: 0.000 min
 Response: 2250954350
 Conc: 48.60 ng/ml



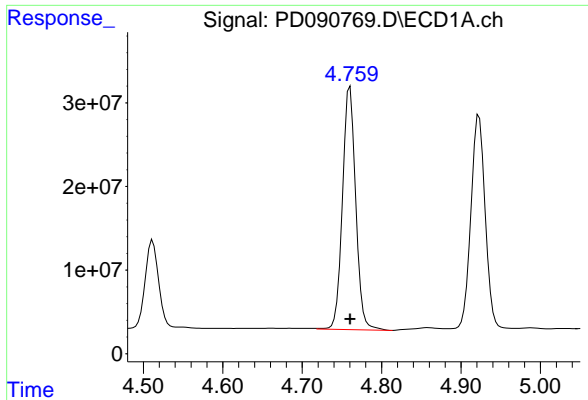
#6 beta-BHC

R.T.: 4.512 min
 Delta R.T.: 0.000 min
 Response: 125705624
 Conc: 47.99 ng/ml



#6 beta-BHC

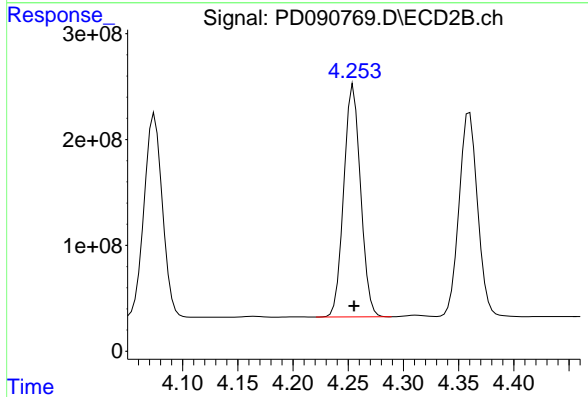
R.T.: 4.019 min
 Delta R.T.: 0.000 min
 Response: 951364052
 Conc: 47.98 ng/ml



#7 delta-BHC

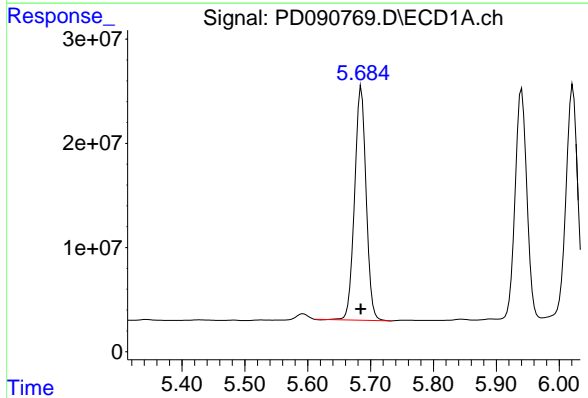
R.T.: 4.760 min
 Delta R.T.: 0.000 min
 Response: 337690238
 Conc: 49.94 ng/ml

Instrument :
 ECD_D
 ClientSampleId :
 COMP-ROLLOFFMSD



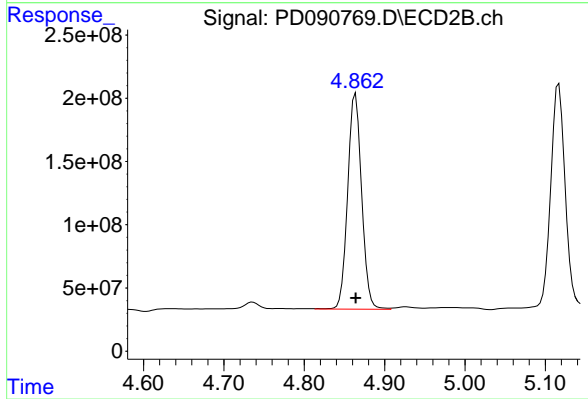
#7 delta-BHC

R.T.: 4.255 min
 Delta R.T.: 0.000 min
 Response: 2326791858
 Conc: 48.76 ng/ml



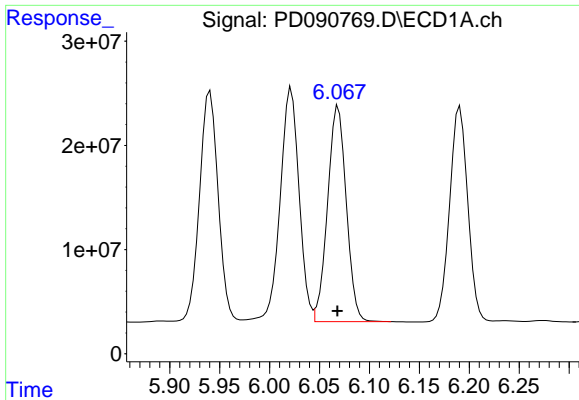
#8 Heptachlor epoxide

R.T.: 5.685 min
 Delta R.T.: 0.000 min
 Response: 286703039
 Conc: 49.52 ng/ml



#8 Heptachlor epoxide

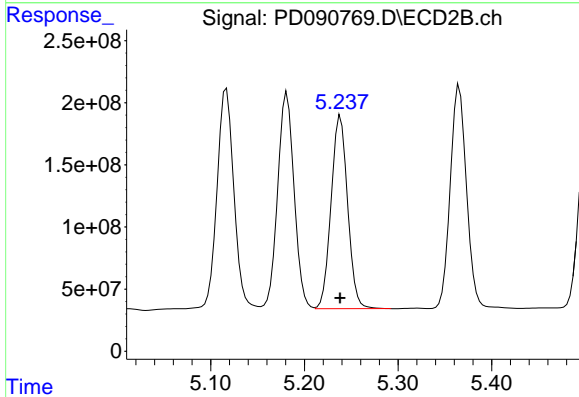
R.T.: 4.864 min
 Delta R.T.: 0.000 min
 Response: 2057020731
 Conc: 48.24 ng/ml



#9 Endosulfan I

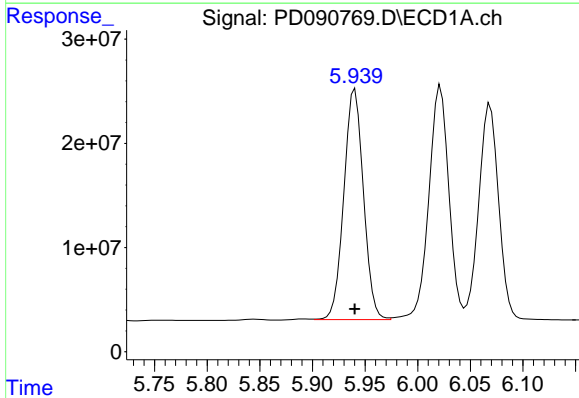
R.T.: 6.069 min
 Delta R.T.: 0.000 min
 Response: 270006575
 Conc: 48.77 ng/ml

Instrument :
 ECD_D
 ClientSampleId :
 COMP-ROLLOFFMSD



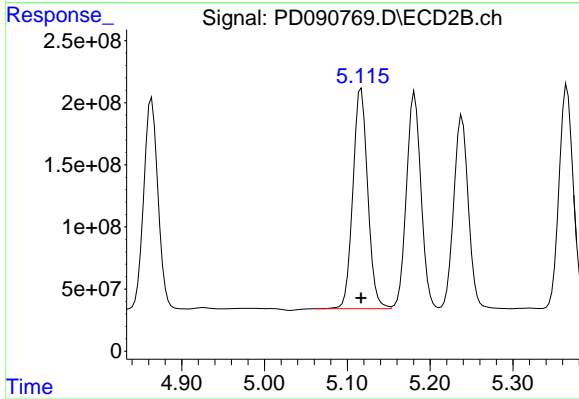
#9 Endosulfan I

R.T.: 5.239 min
 Delta R.T.: 0.000 min
 Response: 1908057666
 Conc: 48.44 ng/ml



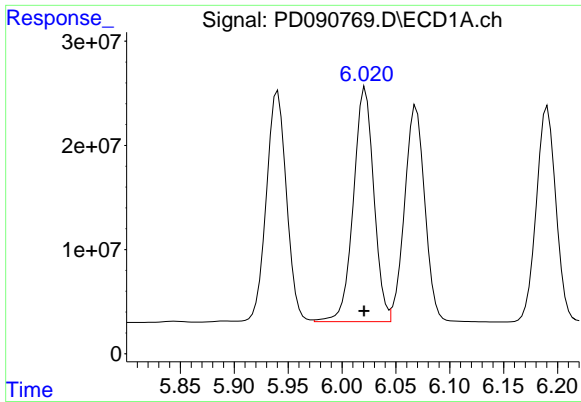
#10 gamma-Chlordane

R.T.: 5.940 min
 Delta R.T.: 0.000 min
 Response: 287520328
 Conc: 48.48 ng/ml



#10 gamma-Chlordane

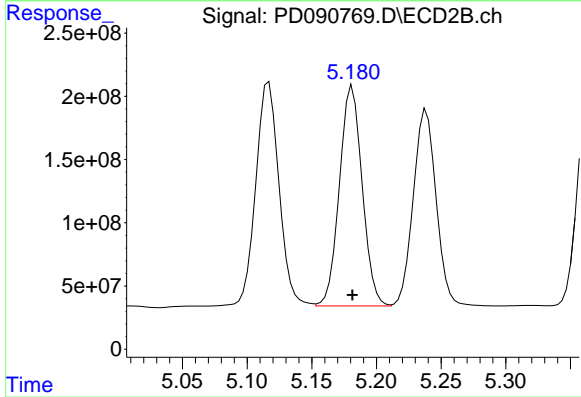
R.T.: 5.117 min
 Delta R.T.: 0.000 min
 Response: 2211234747
 Conc: 49.19 ng/ml



#11 alpha-Chlordane

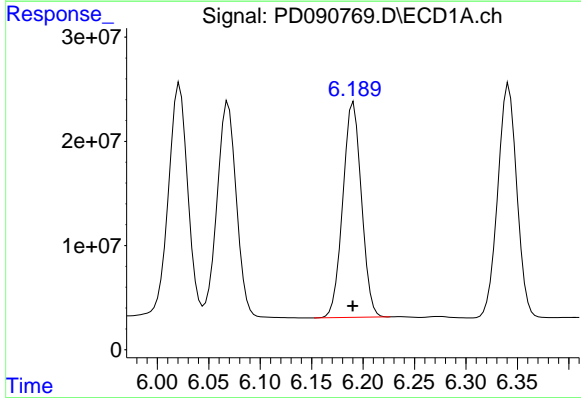
R.T.: 6.022 min
 Delta R.T.: 0.001 min
 Response: 296310307
 Conc: 47.94 ng/ml

Instrument :
 ECD_D
 ClientSampleId :
 COMP-ROLLOFFMSD



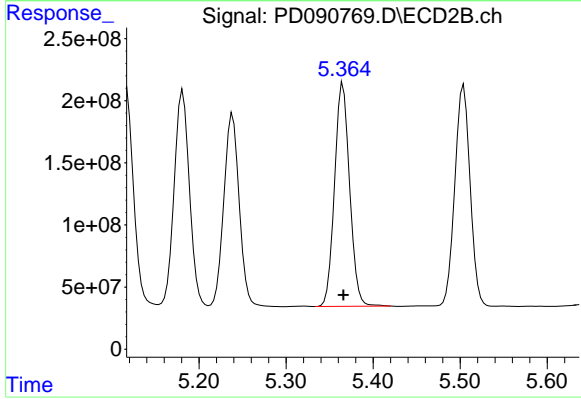
#11 alpha-Chlordane

R.T.: 5.181 min
 Delta R.T.: 0.000 min
 Response: 2125775960
 Conc: 49.28 ng/ml



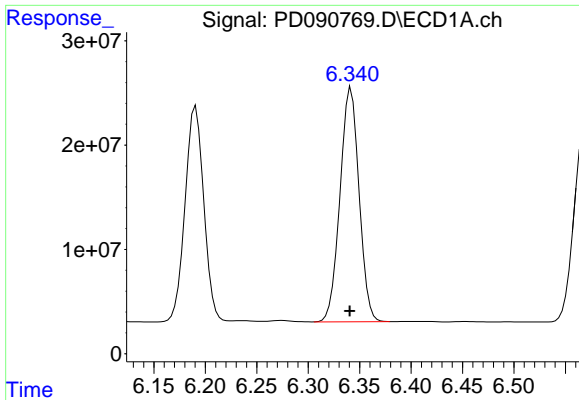
#12 4,4'-DDE

R.T.: 6.191 min
 Delta R.T.: 0.000 min
 Response: 260264333
 Conc: 48.86 ng/ml



#12 4,4'-DDE

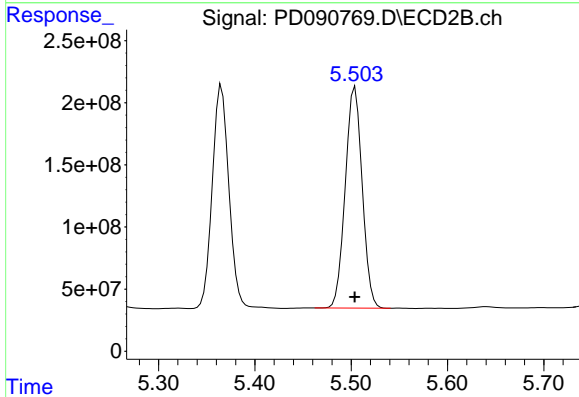
R.T.: 5.365 min
 Delta R.T.: 0.000 min
 Response: 2166466646
 Conc: 49.42 ng/ml



#13 Dieldrin

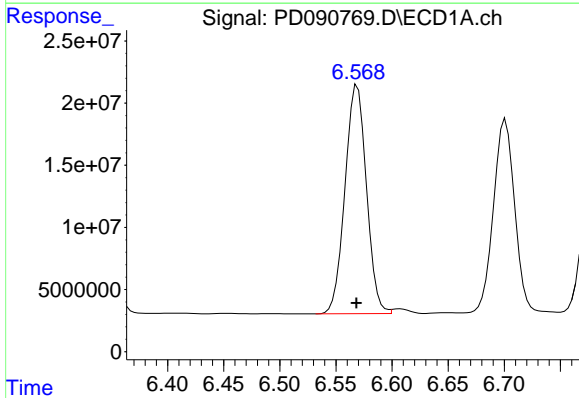
R.T.: 6.342 min
 Delta R.T.: 0.001 min
 Response: 289136583
 Conc: 49.58 ng/ml

Instrument :
 ECD_D
 ClientSampleId :
 COMP-ROLLOFFMSD



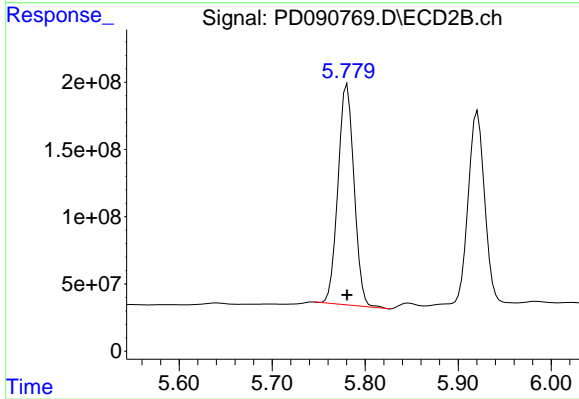
#13 Dieldrin

R.T.: 5.504 min
 Delta R.T.: 0.000 min
 Response: 2168799726
 Conc: 49.09 ng/ml



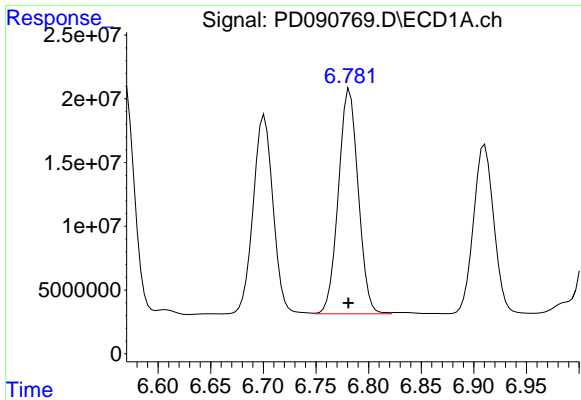
#14 Endrin

R.T.: 6.569 min
 Delta R.T.: 0.000 min
 Response: 244864046
 Conc: 49.43 ng/ml



#14 Endrin

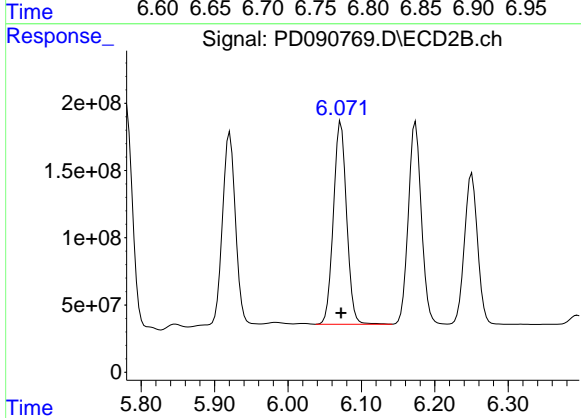
R.T.: 5.781 min
 Delta R.T.: 0.000 min
 Response: 1970443496
 Conc: 48.66 ng/ml



#15 Endosulfan II

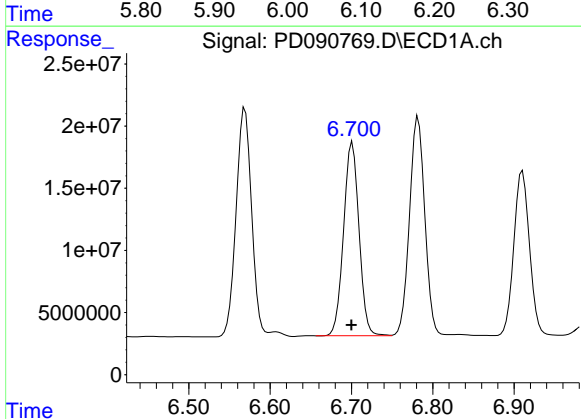
R.T.: 6.782 min
 Delta R.T.: 0.001 min
 Response: 231867559
 Conc: 46.37 ng/ml

Instrument :
 ECD_D
 ClientSampleId :
 COMP-ROLLOFFMSD



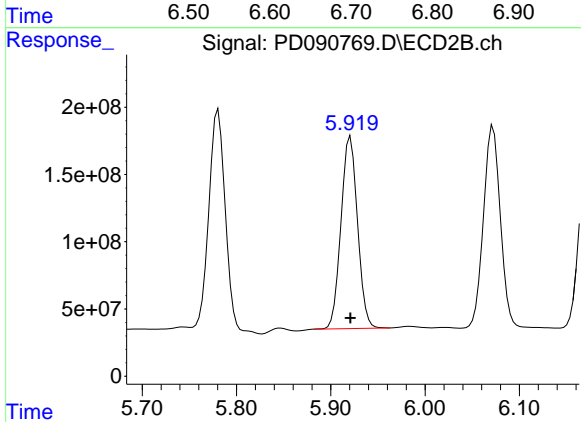
#15 Endosulfan II

R.T.: 6.072 min
 Delta R.T.: 0.000 min
 Response: 1885706637
 Conc: 50.21 ng/ml



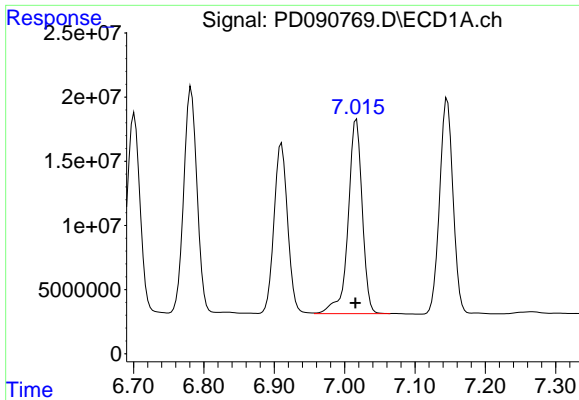
#16 4,4'-DDD

R.T.: 6.701 min
 Delta R.T.: 0.001 min
 Response: 204914718
 Conc: 50.54 ng/ml



#16 4,4'-DDD

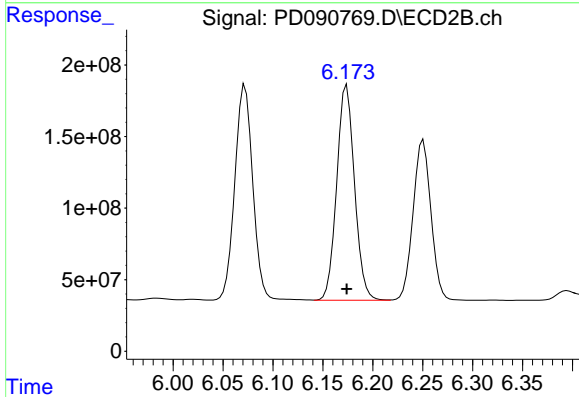
R.T.: 5.921 min
 Delta R.T.: 0.000 min
 Response: 1741968091
 Conc: 47.81 ng/ml



#17 4,4'-DDT

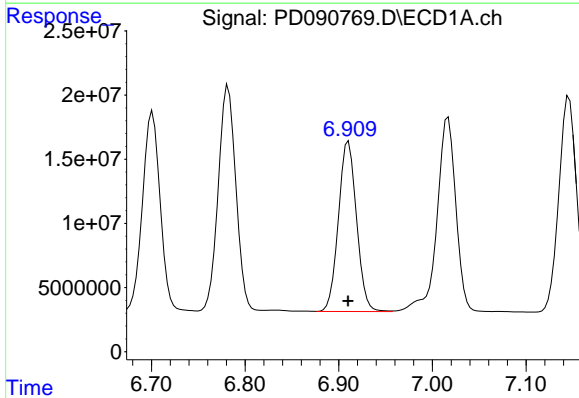
R.T.: 7.017 min
 Delta R.T.: 0.002 min
 Response: 211011087
 Conc: 51.34 ng/ml

Instrument :
 ECD_D
 ClientSampleId :
 COMP-ROLLOFFMSD



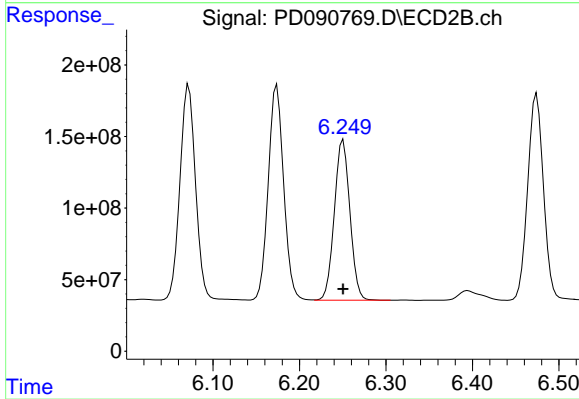
#17 4,4'-DDT

R.T.: 6.174 min
 Delta R.T.: 0.000 min
 Response: 1863845638
 Conc: 53.14 ng/ml



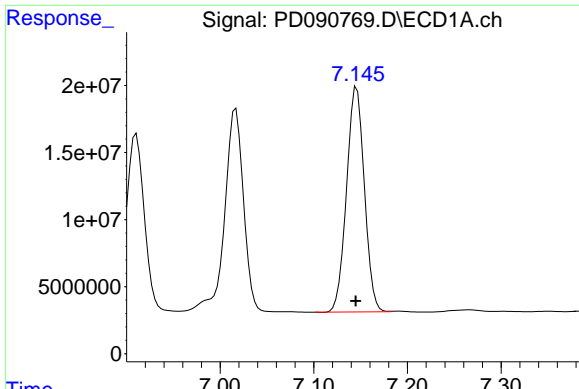
#18 Endrin aldehyde

R.T.: 6.910 min
 Delta R.T.: 0.000 min
 Response: 178426338
 Conc: 48.71 ng/ml



#18 Endrin aldehyde

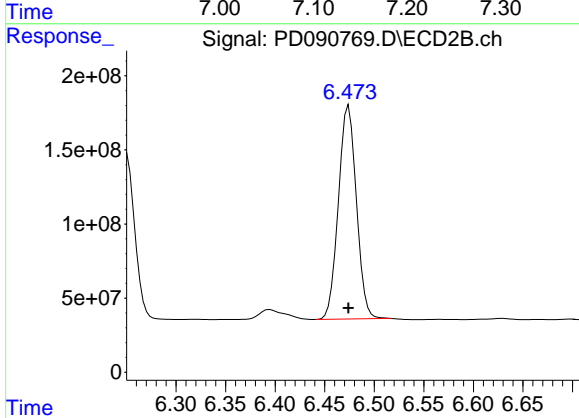
R.T.: 6.251 min
 Delta R.T.: 0.000 min
 Response: 1394257530
 Conc: 50.35 ng/ml



#19 Endosulfan Sulfate

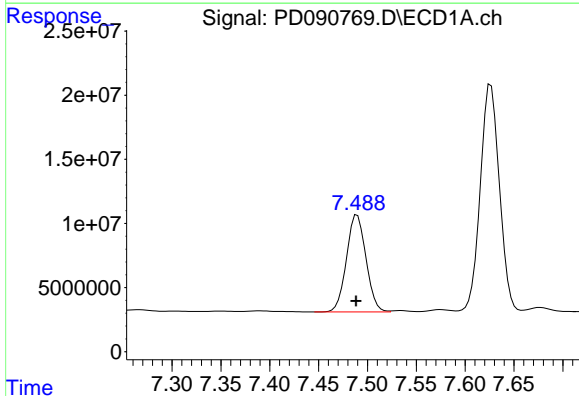
R.T.: 7.146 min
 Delta R.T.: 0.001 min
 Response: 222214770
 Conc: 47.91 ng/ml

Instrument :
 ECD_D
 ClientSampleId :
 COMP-ROLLOFFMSD



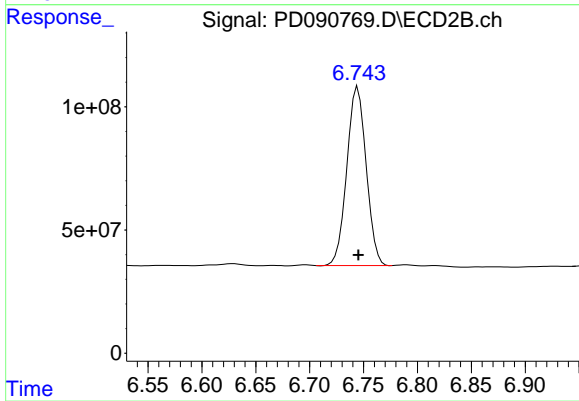
#19 Endosulfan Sulfate

R.T.: 6.474 min
 Delta R.T.: 0.000 min
 Response: 1817999761
 Conc: 50.72 ng/ml



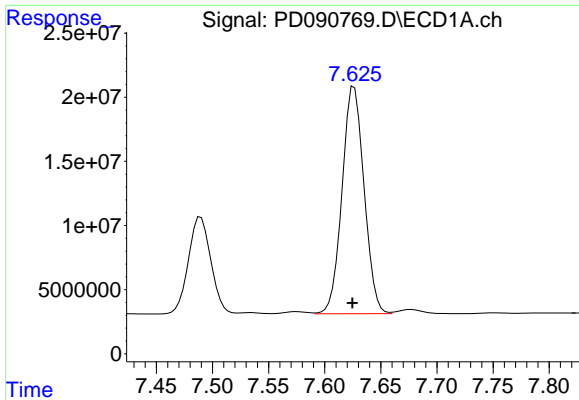
#20 Methoxychlor

R.T.: 7.490 min
 Delta R.T.: 0.001 min
 Response: 105138524
 Conc: 49.46 ng/ml



#20 Methoxychlor

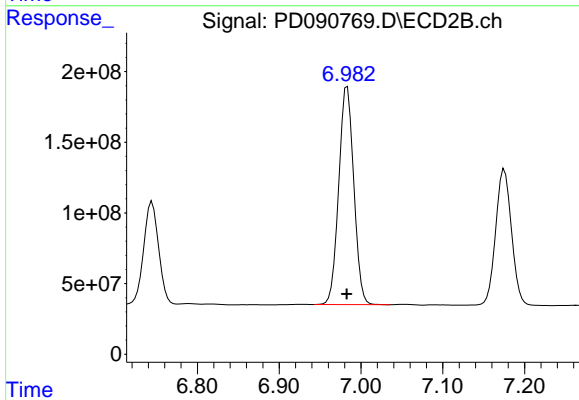
R.T.: 6.745 min
 Delta R.T.: 0.000 min
 Response: 908402672
 Conc: 52.12 ng/ml



#21 Endrin ketone

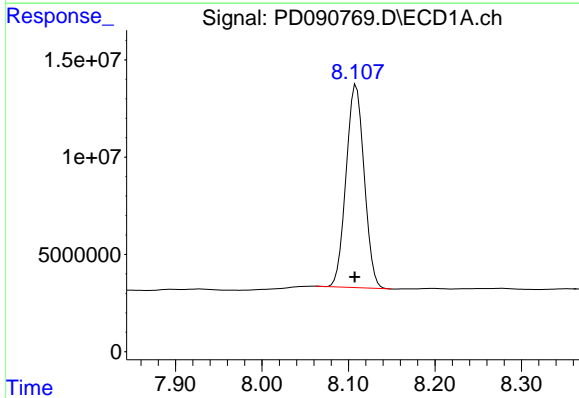
R.T.: 7.626 min
 Delta R.T.: 0.001 min
 Response: 241679099
 Conc: 49.74 ng/ml

Instrument :
 ECD_D
 ClientSampleId :
 COMP-ROLLOFFMSD



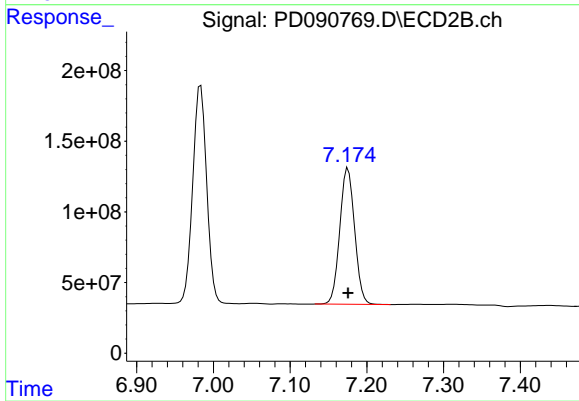
#21 Endrin ketone

R.T.: 6.983 min
 Delta R.T.: 0.000 min
 Response: 1962091852
 Conc: 52.02 ng/ml



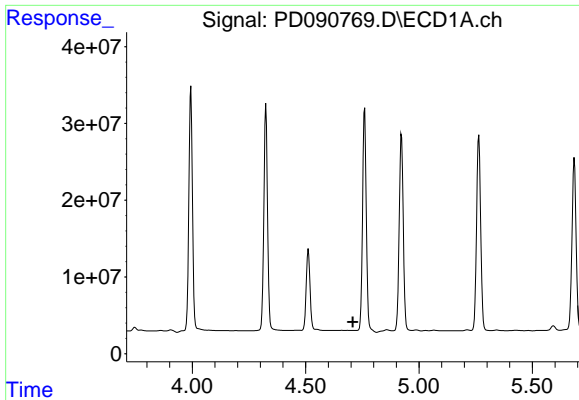
#22 Mirex

R.T.: 8.109 min
 Delta R.T.: 0.002 min
 Response: 151136710
 Conc: 47.22 ng/ml



#22 Mirex

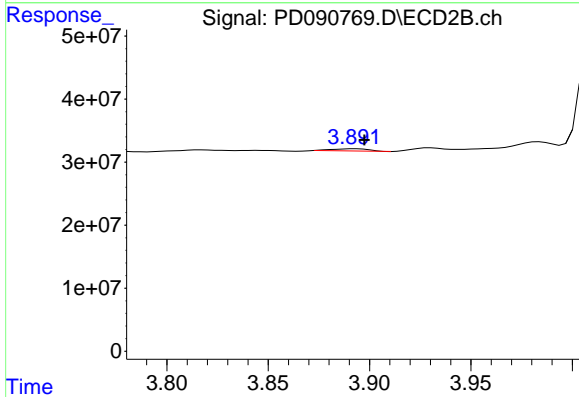
R.T.: 7.175 min
 Delta R.T.: 0.000 min
 Response: 1297356869
 Conc: 50.50 ng/ml



#23 Chlordane-1

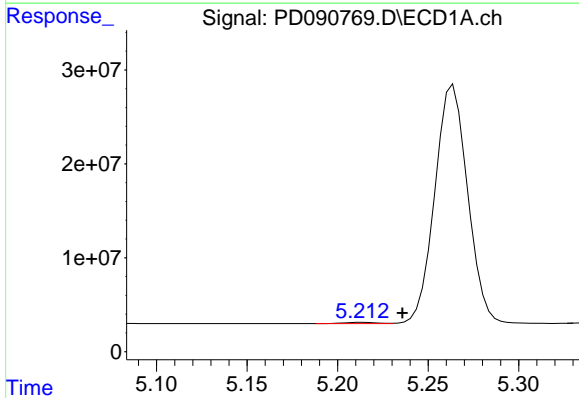
R.T.: 0.000 min
 Exp R.T.: 4.709 min
 Response: 0
 Conc: N.D.

Instrument :
 ECD_D
 ClientSampleId :
 COMP-ROLLOFFMSD



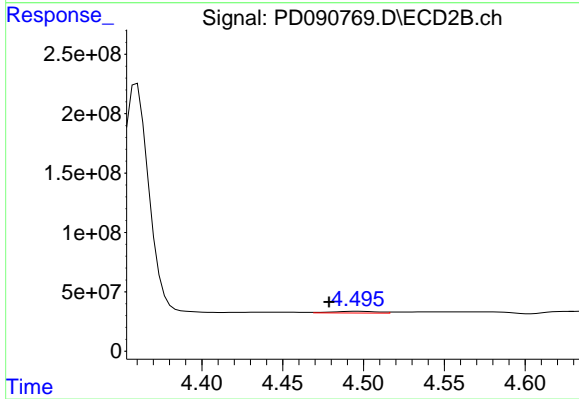
#23 Chlordane-1

R.T.: 3.893 min
 Delta R.T.: -0.005 min
 Response: 4684974
 Conc: 3.76 ng/ml



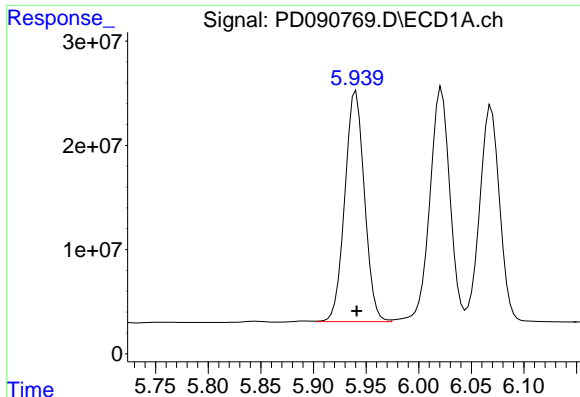
#24 Chlordane-2

R.T.: 5.213 min
 Delta R.T.: -0.022 min
 Response: 1562593
 Conc: 8.09 ng/ml



#24 Chlordane-2

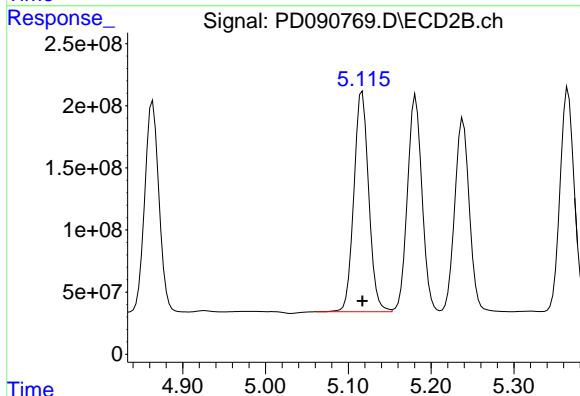
R.T.: 4.496 min
 Delta R.T.: 0.018 min
 Response: 28726309
 Conc: 22.02 ng/ml



#25 Chlordane-3

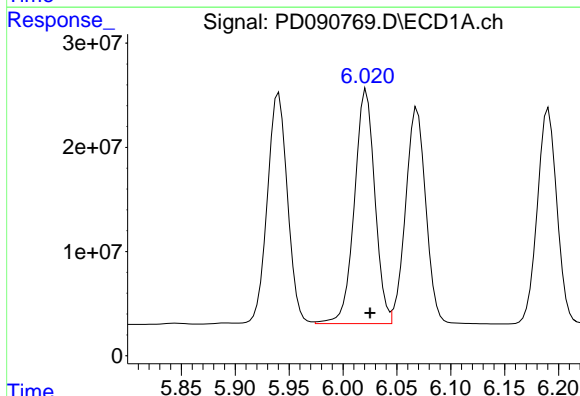
R.T.: 5.940 min
 Delta R.T.: 0.000 min
 Response: 287520328
 Conc: 376.95 ng/ml

Instrument :
 ECD_D
 ClientSampleId :
 COMP-ROLLOFFMSD



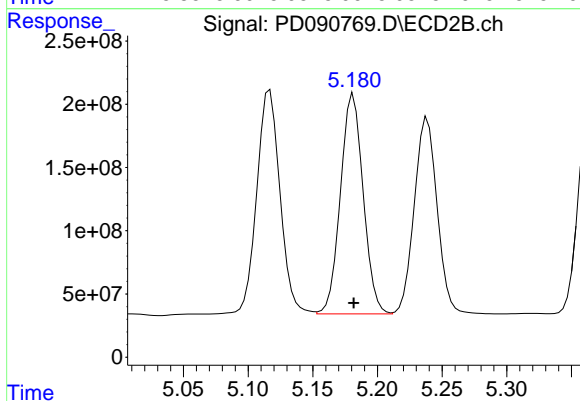
#25 Chlordane-3

R.T.: 5.117 min
 Delta R.T.: 0.000 min
 Response: 2211234747
 Conc: 568.21 ng/ml



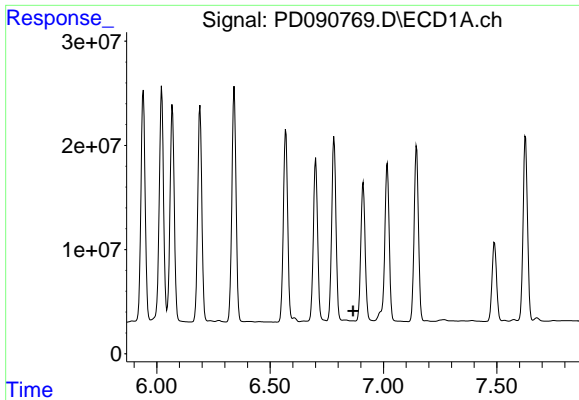
#26 Chlordane-4

R.T.: 6.022 min
 Delta R.T.: -0.004 min
 Response: 296310307
 Conc: 305.83 ng/ml



#26 Chlordane-4

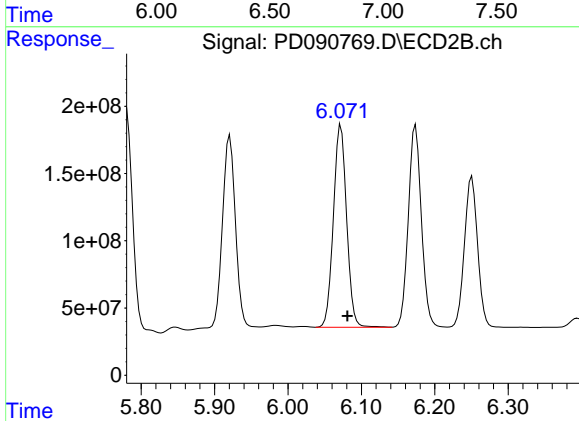
R.T.: 5.181 min
 Delta R.T.: 0.000 min
 Response: 2125775960
 Conc: 636.22 ng/ml



#27 Chlordane-5

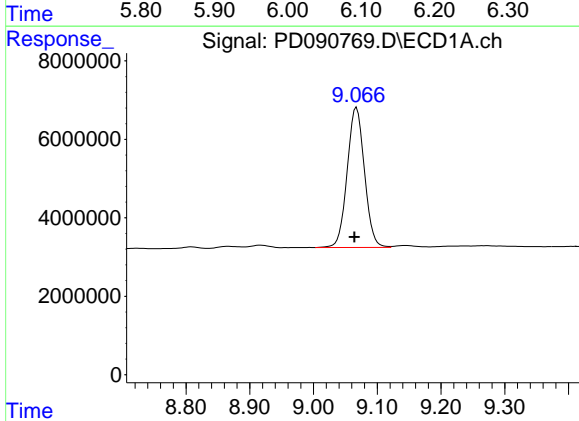
R.T.: 0.000 min
 Exp R.T.: 6.866 min
 Response: 0
 Conc: N.D.

Instrument :
 ECD_D
 ClientSampleId :
 COMP-ROLLOFFMSD



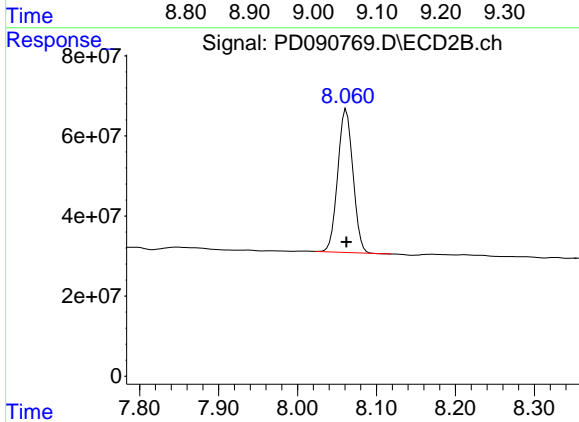
#27 Chlordane-5

R.T.: 6.072 min
 Delta R.T.: -0.009 min
 Response: 1885706637
 Conc: 1277.55 ng/ml



#28 Decachlorobiphenyl

R.T.: 9.068 min
 Delta R.T.: 0.003 min
 Response: 67109061
 Conc: 14.35 ng/ml



#28 Decachlorobiphenyl

R.T.: 8.062 min
 Delta R.T.: 0.000 min
 Response: 476816665
 Conc: 15.74 ng/ml