

Data Path : Z:\pestpcbsrv\HPCHEM1\ECD\_D\Data\PD102318\  
 Data File : PD050053.D  
 Signal(s) : Signal #1: ECD1A.CH Signal #2: ECD2B.CH  
 Acq On : 24 Oct 2018 4:43  
 Operator : AJ\SJ  
 Sample : J5626-04  
 Misc :  
 ALS Vial : 66 Sample Multiplier: 1

Instrument :  
 ECD\_D  
 ClientSampleId :

Integration File signal 1: autoint1.e  
 Integration File signal 2: autoint2.e  
 Quant Time: Oct 24 06:04:46 2018  
 Quant Method : Z:\pestpcbsrv\HPCHEM1\ECD\_D\Method\PD101818.M  
 Quant Title : GC Extractables  
 QLast Update : Fri Oct 19 07:43:29 2018  
 Response via : Initial Calibration  
 Integrator: ChemStation 6890 Scale Mode: Large solvent peaks clipped

Volume Inj. : 2 µl  
 Signal #1 Phase : ZB-MR2 Signal #2 Phase: ZB-MR1  
 Signal #1 Info : 30M x 0.32mm x0.2 Signal #2 Info : 30M x 0.32mm x 0.50µm

Compound	RT#1	RT#2	Resp#1	Resp#2	ng/ml	ng/ml
-----						
System Monitoring Compounds						
1) SA Tetrachlo...	4.232	4.061	11766913	529.9E6	19.628	20.647
28) SA Decachlor...	9.013	9.171	9654632	252.9E6	15.673	16.003
Target Compounds						
2) A alpha-BHC	4.642f	4.494f	3669912	35943233	4.343	0.964 #
3) MA gamma-BHC...	4.974	4.700f	1623421	2709123	1.995	0.080 #
4) MA Heptachlor	0.000	5.262	0	4791161	N.D.	0.149 #
5) MB Aldrin	0.000	5.537	0	872784	N.D.	0.029 #
6) B beta-BHC	5.162f	4.954f	1114638	12350323	2.986	0.858 #
8) B Heptachlo...	0.000	5.942	0	7289020	N.D.	0.275 #
9) A Endosulfan I	6.287f	0.000	1482071	0	2.097	N.D. #
10) B gamma-Chl...	0.000	6.185	0	2399946	N.D.	0.091 #
11) B alpha-Chl...	6.287	6.185f	1482071	2399946	1.888	0.096 #
13) MA Dieldrin	0.000	6.568	0	2143504	N.D.	0.089 #
15) B Endosulfa...	0.000	7.002	0	7448382	N.D.	0.376 #
23) Chlordane-1	5.162	0.000	1114638	0	41.916	N.D. #
24) Chlordane-2	0.000	5.537	0	872784	N.D.	0.742 #
25) Chlordane-3	0.000	6.185	0	2399946	N.D.	0.662 #
26) Chlordane-4	6.287	0.000	1482071	0	20.667	N.D. #
27) Chlordane-5	0.000	7.002	0	7448382	N.D.	10.489 #

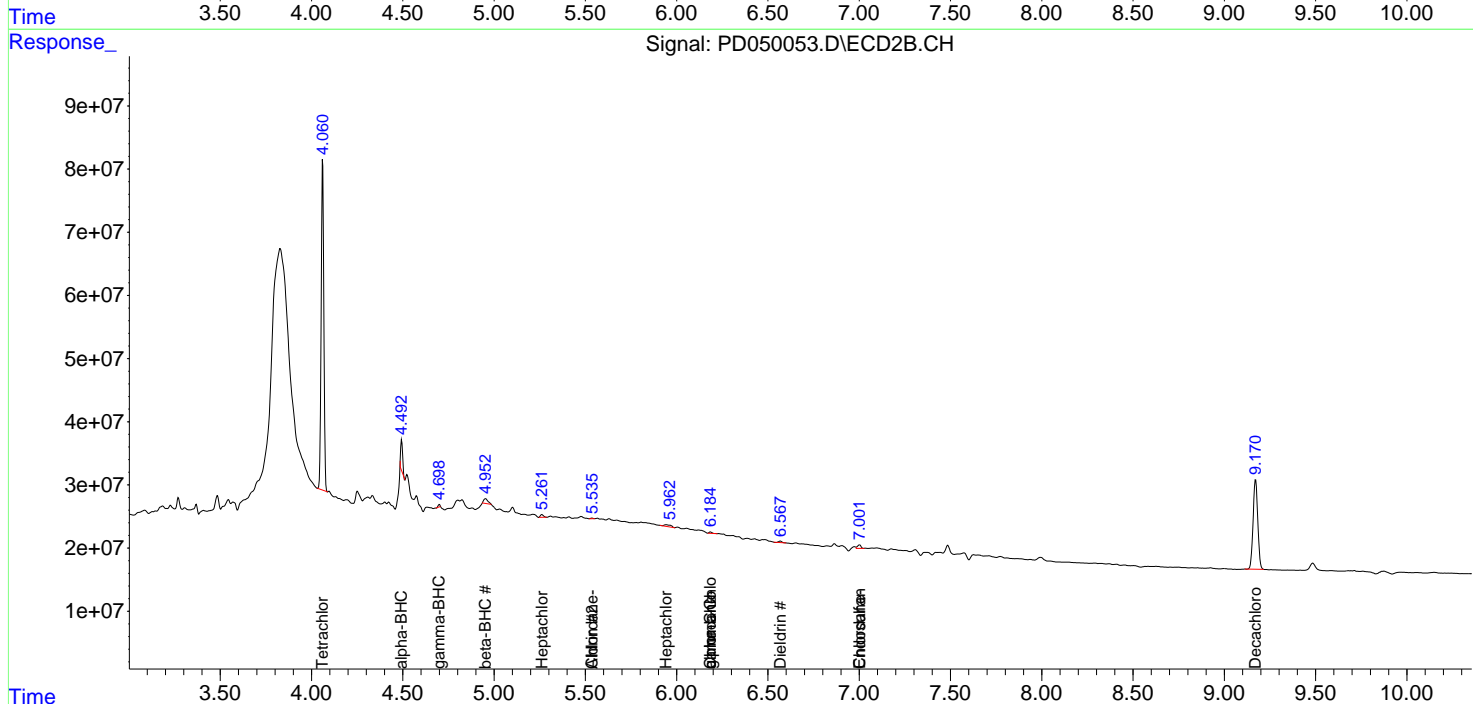
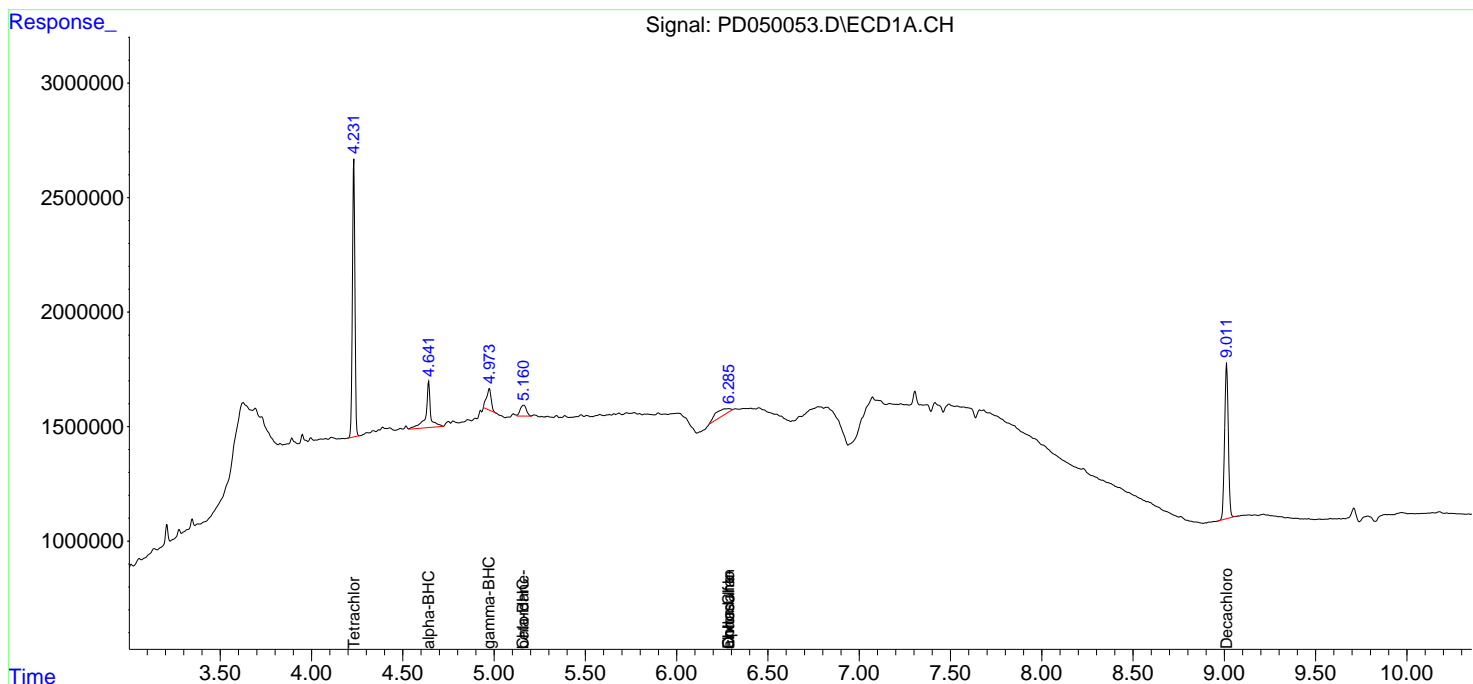
(f)=RT Delta > 1/2 Window (#)=Amounts differ by > 25% (m)=manual int.

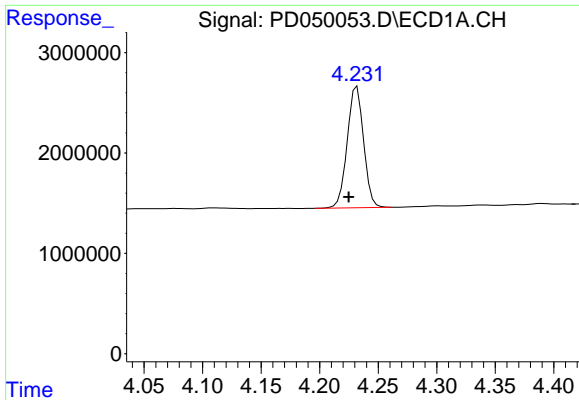
Data Path : Z:\pestpcbsrv\HPCHEM1\ECD\_D\Data\PD102318\  
 Data File : PD050053.D  
 Signal(s) : Signal #1: ECD1A.CH Signal #2: ECD2B.CH  
 Acq On : 24 Oct 2018 4:43  
 Operator : AJ\SJ  
 Sample : J5626-04  
 Misc :  
 ALS Vial : 66 Sample Multiplier: 1

Instrument :  
 ECD\_D  
 ClientSampled :

Integration File signal 1: autoint1.e  
 Integration File signal 2: autoint2.e  
 Quant Time: Oct 24 06:04:46 2018  
 Quant Method : Z:\pestpcbsrv\HPCHEM1\ECD\_D\Method\PD101818.M  
 Quant Title : GC Extractables  
 QLast Update : Fri Oct 19 07:43:29 2018  
 Response via : Initial Calibration  
 Integrator: ChemStation 6890 Scale Mode: Large solvent peaks clipped

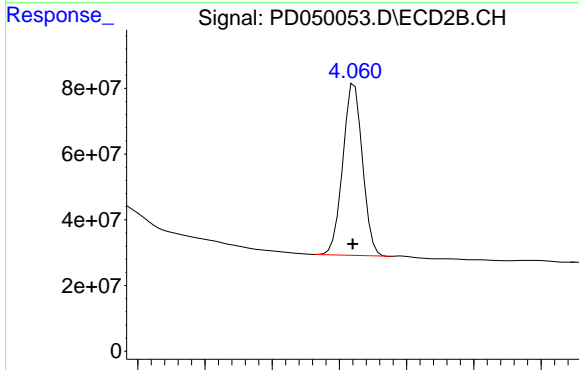
Volume Inj. : 2 µl  
 Signal #1 Phase : ZB-MR2 Signal #2 Phase: ZB-MR1  
 Signal #1 Info : 30M x 0.32mm x0.2 Signal #2 Info : 30M x 0.32mm x 0.50µm



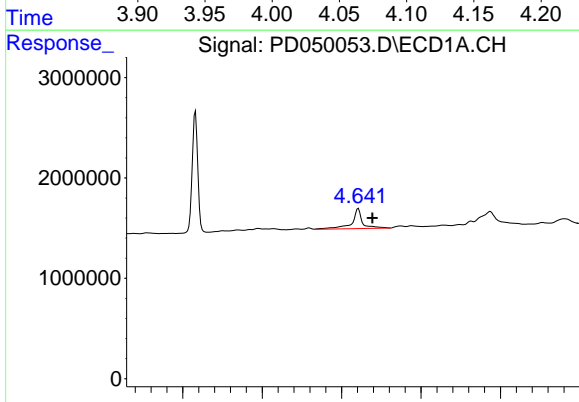


#1 Tetrachloro-m-xylene  
 R.T.: 4.232 min  
 Delta R.T.: 0.007 min  
 Response: 11766913  
 Conc: 19.63 ng/ml

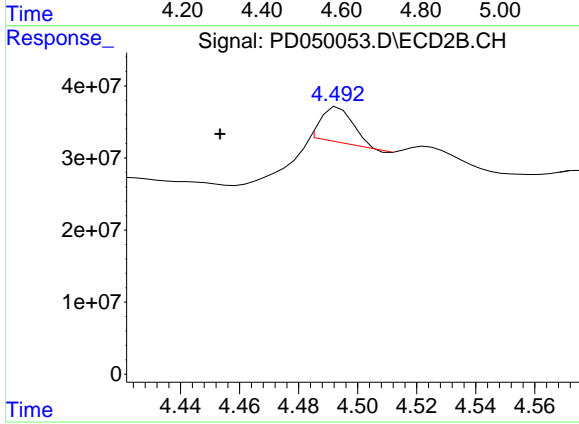
Instrument :  
 ECD\_D  
 ClientSampled :



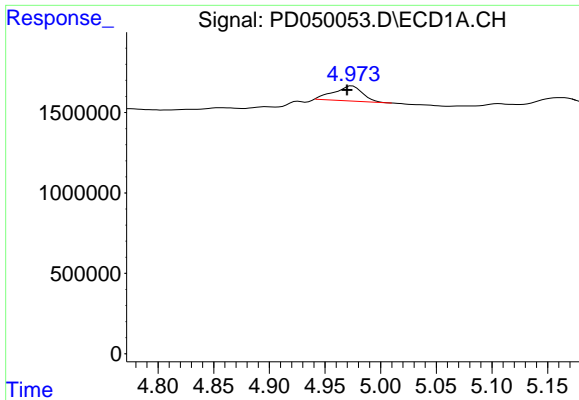
#1 Tetrachloro-m-xylene  
 R.T.: 4.061 min  
 Delta R.T.: 0.001 min  
 Response: 529864802  
 Conc: 20.65 ng/ml



#2 alpha-BHC  
 R.T.: 4.642 min  
 Delta R.T.: -0.036 min  
 Response: 3669912  
 Conc: 4.34 ng/ml

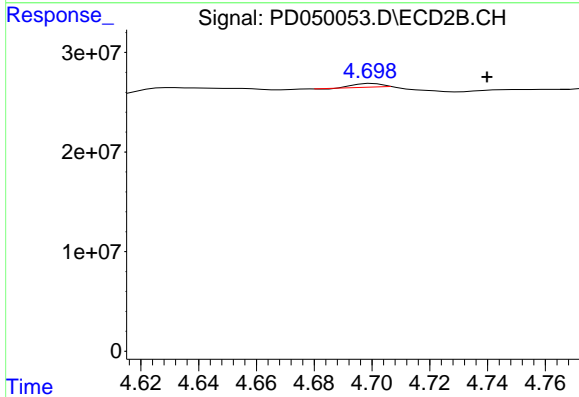


#2 alpha-BHC  
 R.T.: 4.494 min  
 Delta R.T.: 0.040 min  
 Response: 35943233  
 Conc: 0.96 ng/ml

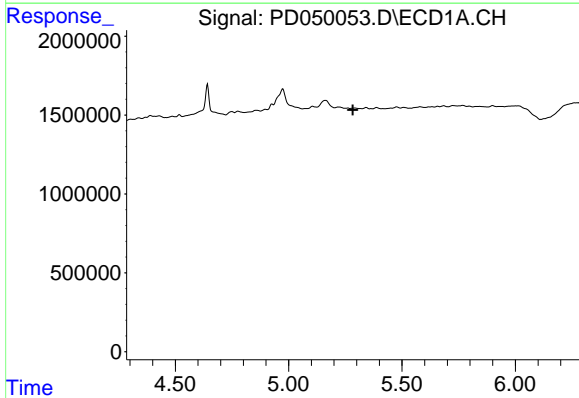


#3 gamma-BHC (Lindane)  
 R.T.: 4.974 min  
 Delta R.T.: 0.005 min  
 Response: 1623421  
 Conc: 2.00 ng/ml

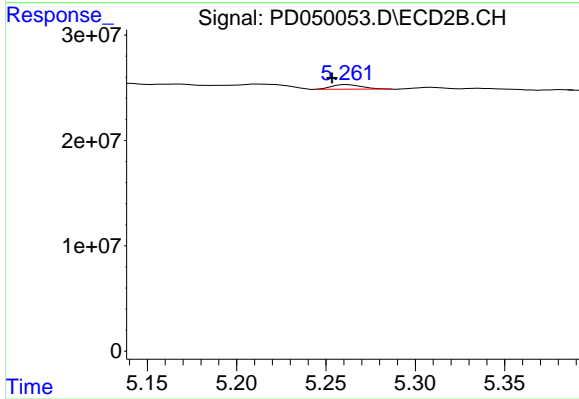
Instrument :  
 ECD\_D  
 ClientSampled :



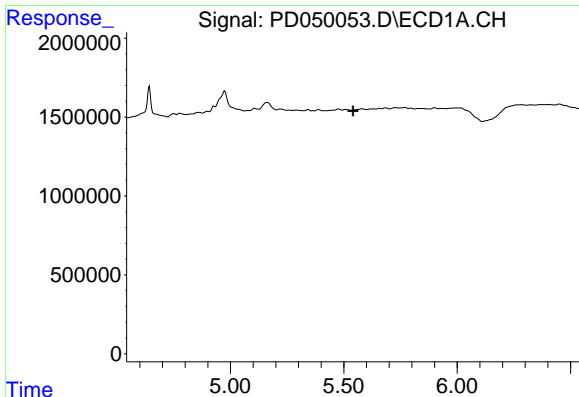
#3 gamma-BHC (Lindane)  
 R.T.: 4.700 min  
 Delta R.T.: -0.040 min  
 Response: 2709123  
 Conc: 0.08 ng/ml



#4 Heptachlor  
 R.T.: 0.000 min  
 Exp R.T. : 5.283 min  
 Response: 0  
 Conc: N.D.

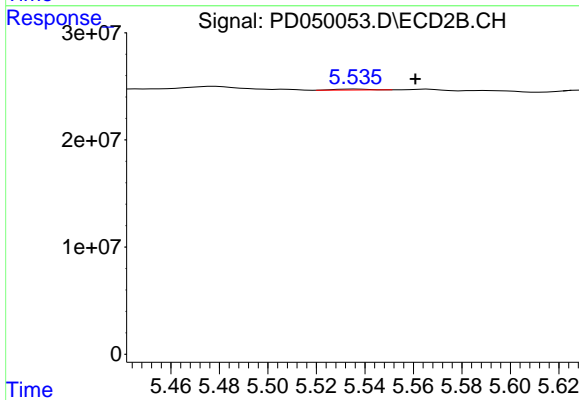


#4 Heptachlor  
 R.T.: 5.262 min  
 Delta R.T.: 0.009 min  
 Response: 4791161  
 Conc: 0.15 ng/ml

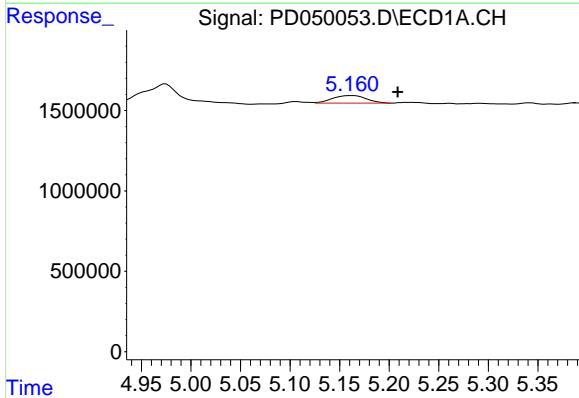


#5 Aldrin  
 R.T.: 0.000 min  
 Exp R.T.: 5.542 min  
 Response: 0  
 Conc: N.D.

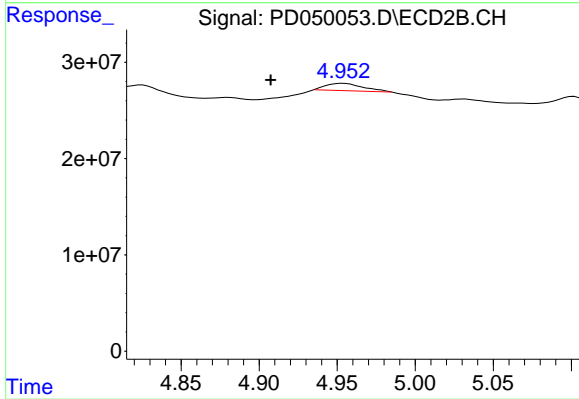
Instrument :  
 ECD\_D  
 ClientSampled :



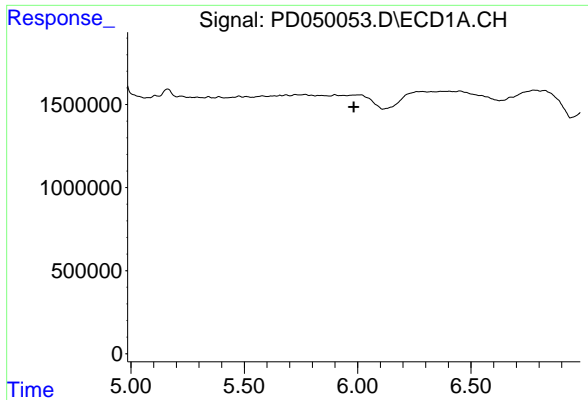
#5 Aldrin  
 R.T.: 5.537 min  
 Delta R.T.: -0.024 min  
 Response: 872784  
 Conc: 0.03 ng/ml



#6 beta-BHC  
 R.T.: 5.162 min  
 Delta R.T.: -0.047 min  
 Response: 1114638  
 Conc: 2.99 ng/ml

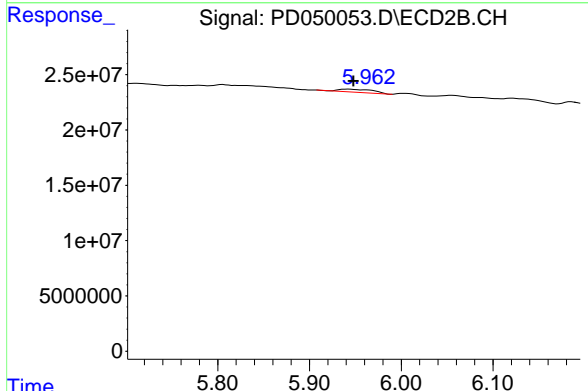


#6 beta-BHC  
 R.T.: 4.954 min  
 Delta R.T.: 0.046 min  
 Response: 12350323  
 Conc: 0.86 ng/ml

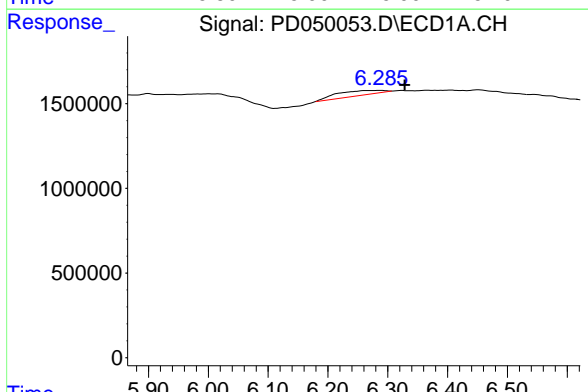


#8 Heptachlor epoxide  
 R.T.: 0.000 min  
 Exp R.T.: 5.983 min  
 Response: 0  
 Conc: N.D.

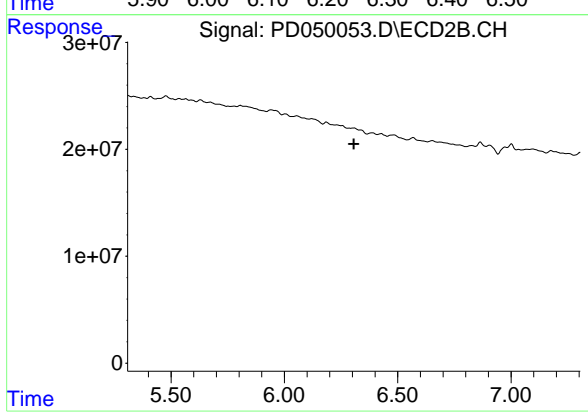
Instrument :  
 ECD\_D  
 ClientSampleId :



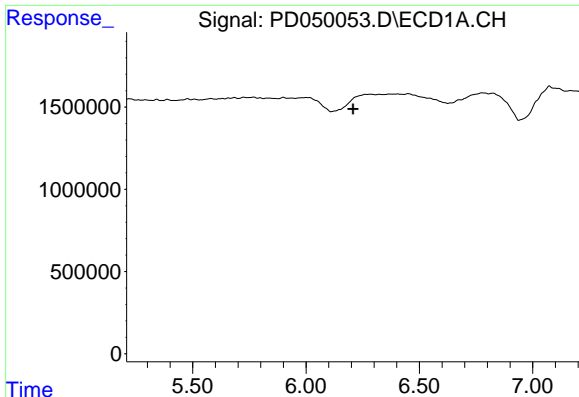
#8 Heptachlor epoxide  
 R.T.: 5.942 min  
 Delta R.T.: -0.006 min  
 Response: 7289020  
 Conc: 0.28 ng/ml



#9 Endosulfan I  
 R.T.: 6.287 min  
 Delta R.T.: -0.042 min  
 Response: 1482071  
 Conc: 2.10 ng/ml



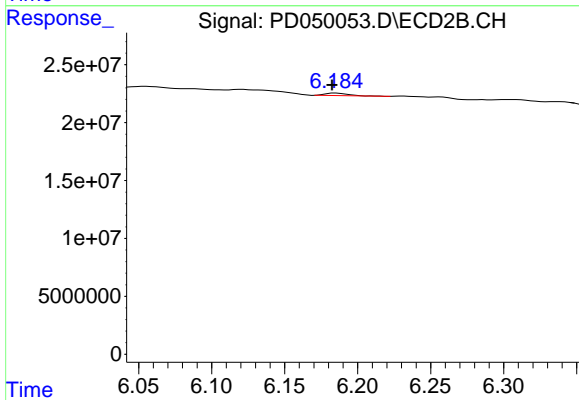
#9 Endosulfan I  
 R.T.: 0.000 min  
 Exp R.T.: 6.306 min  
 Response: 0  
 Conc: N.D.



#10 gamma-Chlordane

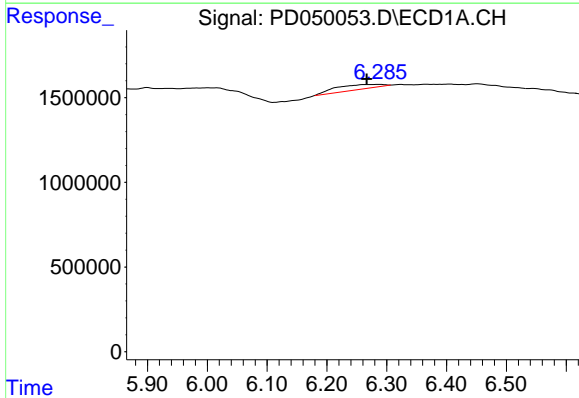
R.T.: 0.000 min  
 Exp R.T.: 6.207 min  
 Response: 0  
 Conc: N.D.

Instrument :  
 ECD\_D  
 ClientSampleId :



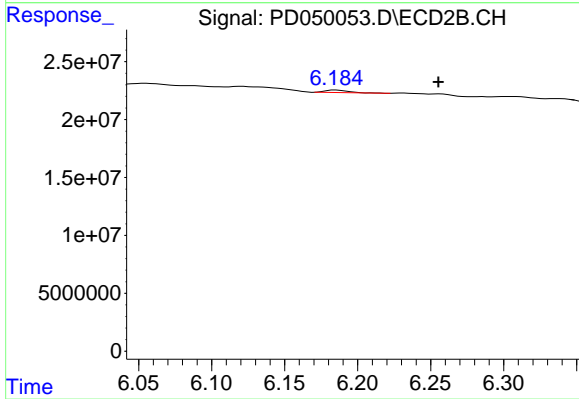
#10 gamma-Chlordane

R.T.: 6.185 min  
 Delta R.T.: 0.003 min  
 Response: 2399946  
 Conc: 0.09 ng/ml



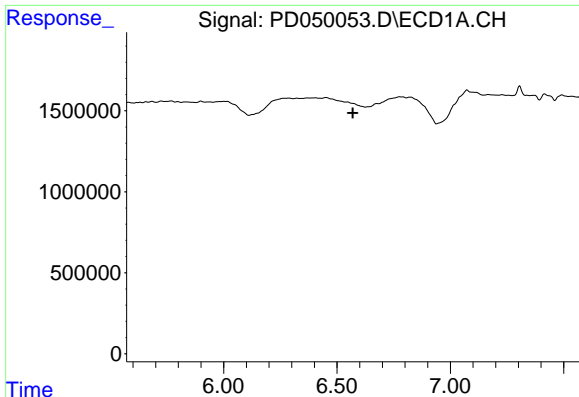
#11 alpha-Chlordane

R.T.: 6.287 min  
 Delta R.T.: 0.020 min  
 Response: 1482071  
 Conc: 1.89 ng/ml



#11 alpha-Chlordane

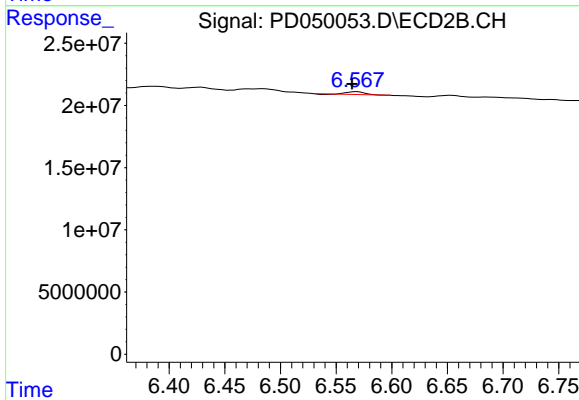
R.T.: 6.185 min  
 Delta R.T.: -0.070 min  
 Response: 2399946  
 Conc: 0.10 ng/ml



#13 Dieldrin

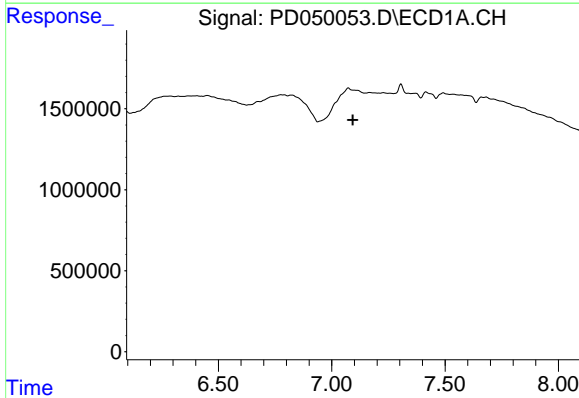
R.T.: 0.000 min  
 Exp R.T. : 6.570 min  
 Response: 0  
 Conc: N.D.

Instrument :  
 ECD\_D  
 ClientSampleId :



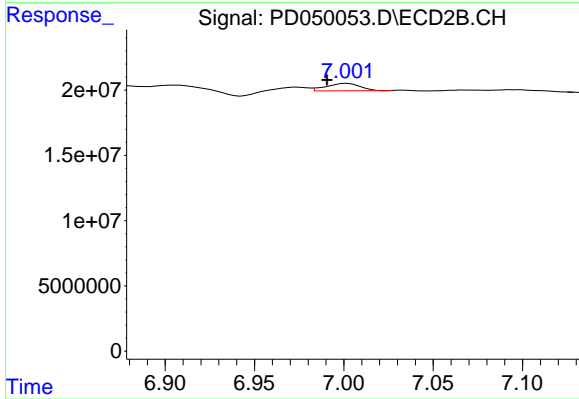
#13 Dieldrin

R.T.: 6.568 min  
 Delta R.T.: 0.004 min  
 Response: 2143504  
 Conc: 0.09 ng/ml



#15 Endosulfan II

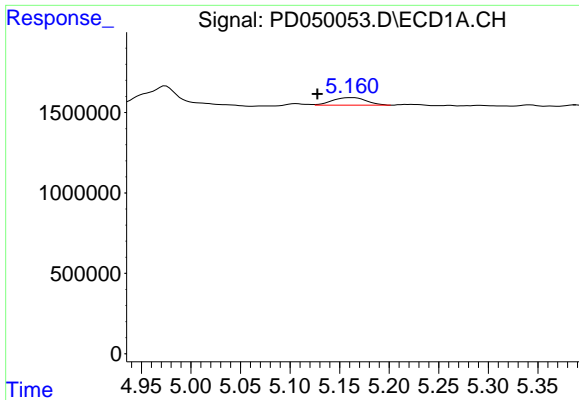
R.T.: 0.000 min  
 Exp R.T. : 7.093 min  
 Response: 0  
 Conc: N.D.



#15 Endosulfan II

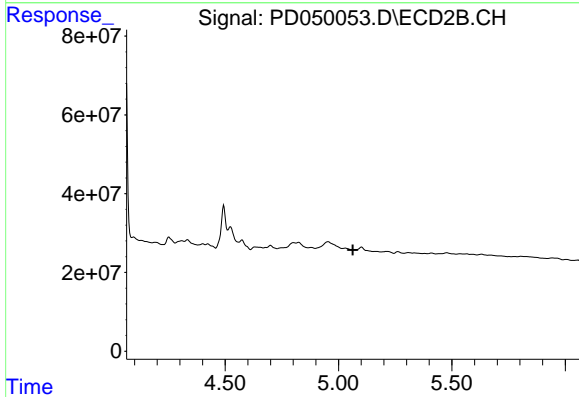
R.T.: 7.002 min  
 Delta R.T.: 0.011 min  
 Response: 7448382  
 Conc: 0.38 ng/ml



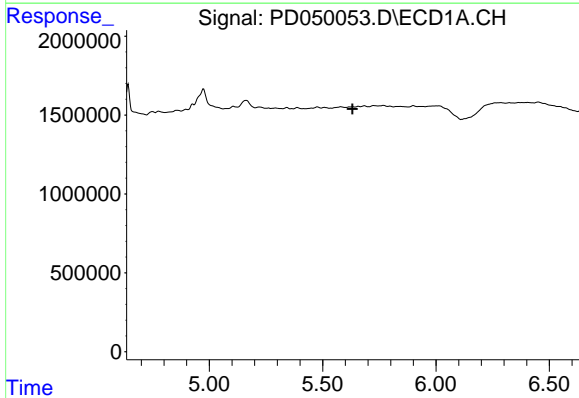


#23 Chlordane-1  
 R.T.: 5.162 min  
 Delta R.T.: 0.034 min  
 Response: 1114638  
 Conc: 41.92 ng/ml

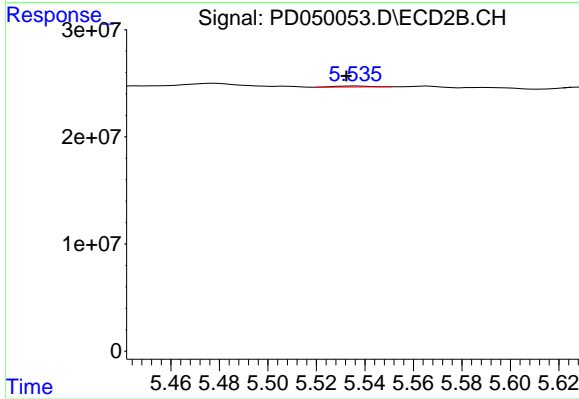
Instrument :  
 ECD\_D  
 ClientSampled :



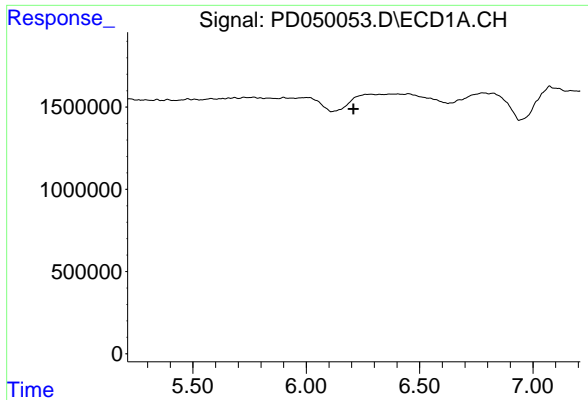
#23 Chlordane-1  
 R.T.: 0.000 min  
 Exp R.T. : 5.063 min  
 Response: 0  
 Conc: N.D.



#24 Chlordane-2  
 R.T.: 0.000 min  
 Exp R.T. : 5.632 min  
 Response: 0  
 Conc: N.D.



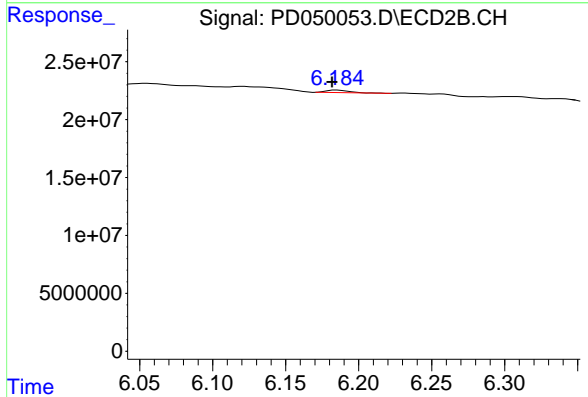
#24 Chlordane-2  
 R.T.: 5.537 min  
 Delta R.T.: 0.004 min  
 Response: 872784  
 Conc: 0.74 ng/ml



#25 Chlordane-3

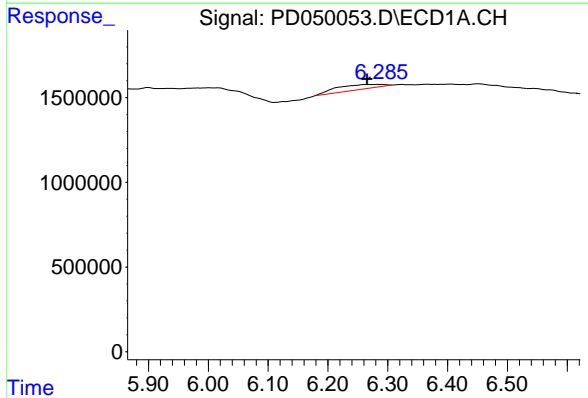
R.T.: 0.000 min  
 Exp R.T.: 6.209 min  
 Response: 0  
 Conc: N.D.

Instrument :  
 ECD\_D  
 ClientSampleId :



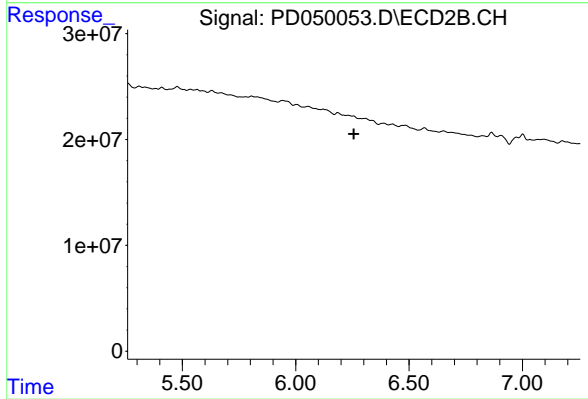
#25 Chlordane-3

R.T.: 6.185 min  
 Delta R.T.: 0.004 min  
 Response: 2399946  
 Conc: 0.66 ng/ml



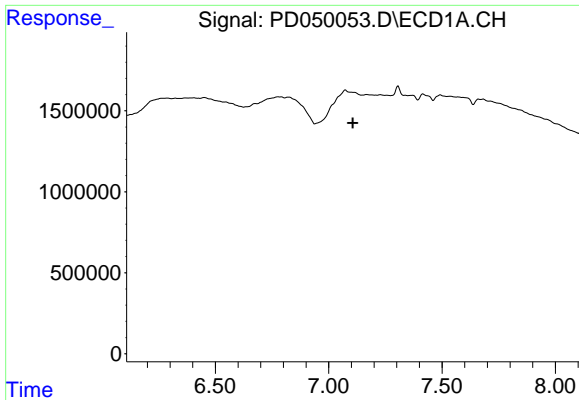
#26 Chlordane-4

R.T.: 6.287 min  
 Delta R.T.: 0.021 min  
 Response: 1482071  
 Conc: 20.67 ng/ml



#26 Chlordane-4

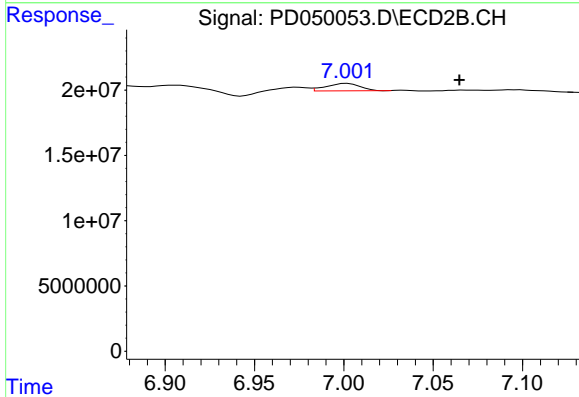
R.T.: 0.000 min  
 Exp R.T.: 6.257 min  
 Response: 0  
 Conc: N.D.



#27 Chlordane-5

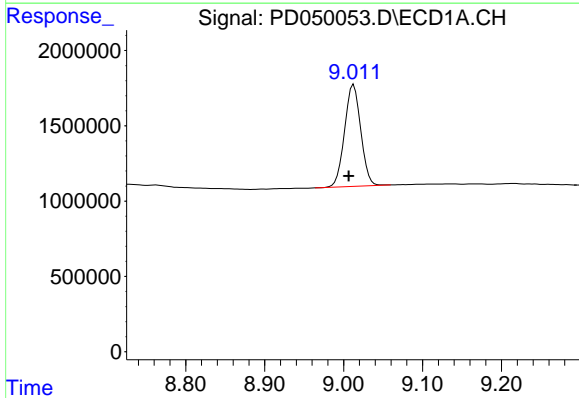
R.T.: 0.000 min  
 Exp R.T.: 7.106 min  
 Response: 0  
 Conc: N.D.

Instrument :  
 ECD\_D  
 ClientSampleId :



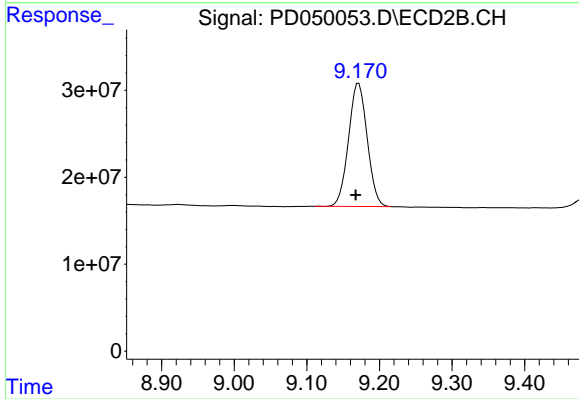
#27 Chlordane-5

R.T.: 7.002 min  
 Delta R.T.: -0.063 min  
 Response: 7448382  
 Conc: 10.49 ng/ml



#28 Decachlorobiphenyl

R.T.: 9.013 min  
 Delta R.T.: 0.006 min  
 Response: 9654632  
 Conc: 15.67 ng/ml



#28 Decachlorobiphenyl

R.T.: 9.171 min  
 Delta R.T.: 0.004 min  
 Response: 252861479  
 Conc: 16.00 ng/ml