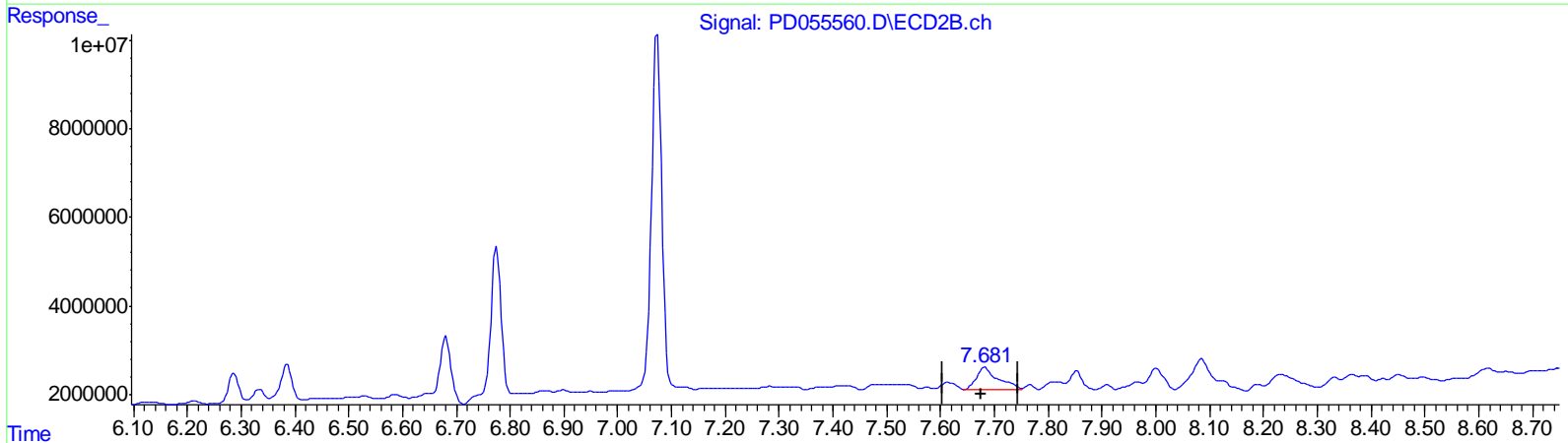
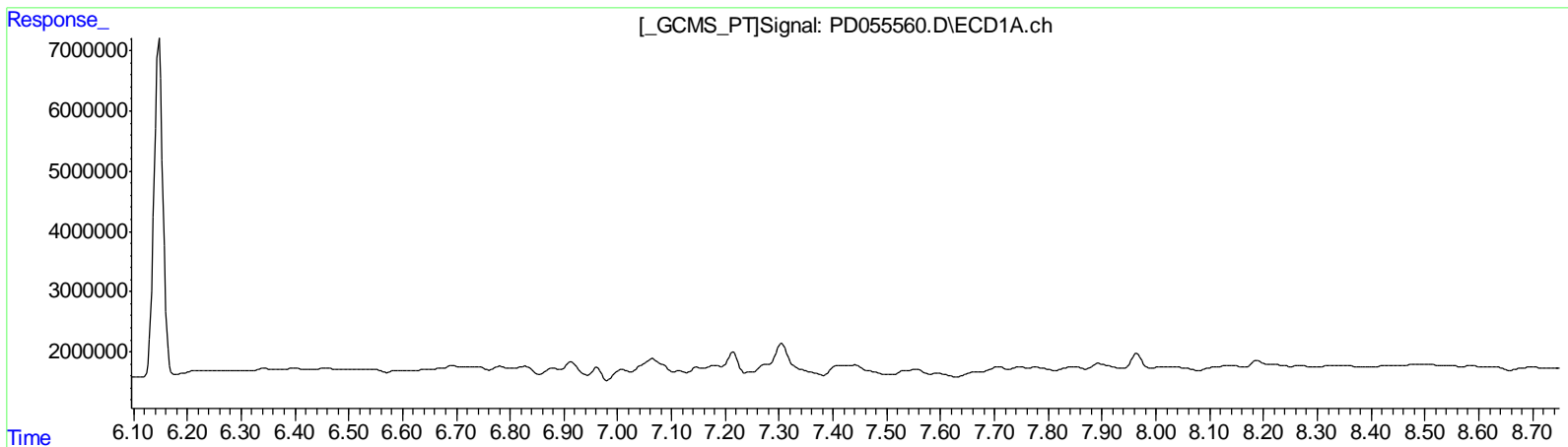


Data Path : Z:\pestpcbsrv\HPCHEM1\ECD_D\Data\PD102319\
 Data File : PD055560.D
 Signal(s) : Signal #1: ECD1A.ch Signal #2: ECD2B.ch
 Acq On : 23 Oct 2019 18:12
 Operator : SG\AJ
 Sample : K5482-07DL 10X
 Misc :
 ALS Vial : 23 Sample Multiplier: 1

Integration File signal 1: autoint1.e
 Integration File signal 2: autoint2.e
 Quant Time: Oct 24 04:25:01 2019
 Quant Method : Z:\pestpcbsrv\HPCHEM1\ECD_D\Method\PD101819CLP.M
 Quant Title : GC Extractables
 QLast Update : Sat Oct 19 00:42:03 2019
 Response via : Initial Calibration
 Integrator: ChemStation

Volume Inj. : 1 µl
 Signal #1 Phase : ZB-MR2 Signal #2 Phase: ZB-MR1
 Signal #1 Info : 30M x 0.32mm x0.2 Signal #2 Info : 30M x 0.32mm x 0.50µm



QEdit

(21) Endrin ketone (B)
 0.000min 0.000 ng/ml
 response 0

(21) Endrin ketone #2 (B)
 7.682min 8.883 ng/ml
 response 14227569

(+) = Expected Retention Time