

Data Path : Z:\pestpcbsrv\HPCHEM1\ECD\_D\Data\PD102319\  
 Data File : PD055547.D  
 Signal(s) : Signal #1: ECD1A.ch Signal #2: ECD2B.ch  
 Acq On : 23 Oct 2019 14:40  
 Operator : SG\AJ  
 Sample : PIBLK38  
 Misc :  
 ALS Vial : 2 Sample Multiplier: 1

Instrument :  
 ECD\_D  
 ClientSampleId :  
 PIBLK38

Integration File signal 1: autoint1.e  
 Integration File signal 2: autoint2.e  
 Quant Time: Oct 24 04:20:32 2019  
 Quant Method : Z:\pestpcbsrv\HPCHEM1\ECD\_D\Method\PD101819CLP.M  
 Quant Title : GC Extractables  
 QLast Update : Sat Oct 19 00:42:03 2019  
 Response via : Initial Calibration  
 Integrator: ChemStation

Volume Inj. : 1 µl  
 Signal #1 Phase : ZB-MR2 Signal #2 Phase: ZB-MR1  
 Signal #1 Info : 30M x 0.32mm x0.2 Signal #2 Info : 30M x 0.32mm x 0.50µm

Compound	RT#1	RT#2	Resp#1	Resp#2	ng/ml	ng/ml
-----						
System Monitoring Compounds						
1) SA Tetrachlo...	3.290	3.963	21970001	30277874	24.642	22.489
27) SA Decachlor...	7.966	8.999	38869066	53504647	42.449	41.006
Target Compounds						
2) A alpha-BHC	0.000	4.396f	0	2301700	N.D.	1.183
5) MB Aldrin	0.000	5.450	0	1615243	N.D.	0.929
6) B beta-BHC	0.000	4.847f	0	105725	N.D.	0.120
8) B Heptachlo...	0.000	5.819	0	1189613	N.D.	0.697
9) A Endosulfan I	0.000	6.167	0	179202	N.D.	0.109
10) B trans-Chl...	0.000	6.080	0	1869930	N.D.	1.062
11) B cis-Chlor...	0.000	6.167f	0	179202	N.D.	0.104
12) B 4,4'-DDE	0.000	6.306	0	7353521	N.D.	4.361
13) MA Dieldrin	0.000	6.385f	0	6918141	N.D.	3.823
14) MA Endrin	0.000	6.656	0	1712356	N.D.	1.226
16) A 4,4'-DDD	0.000	6.776	0	365868	N.D.	0.256
17) MA 4,4'-DDT	0.000	7.074	0	2530848	N.D.	1.867
22) Toxaphene-1	0.000	6.357	0	5739672	N.D.	735.038
23) Toxaphene-2	0.000	6.656	0	1712356	N.D.	175.818
24) Toxaphene-3	0.000	7.074	0	2530848	N.D.	186.598
25) Toxaphene-4	0.000	7.074	0	2530848	N.D.	65.683

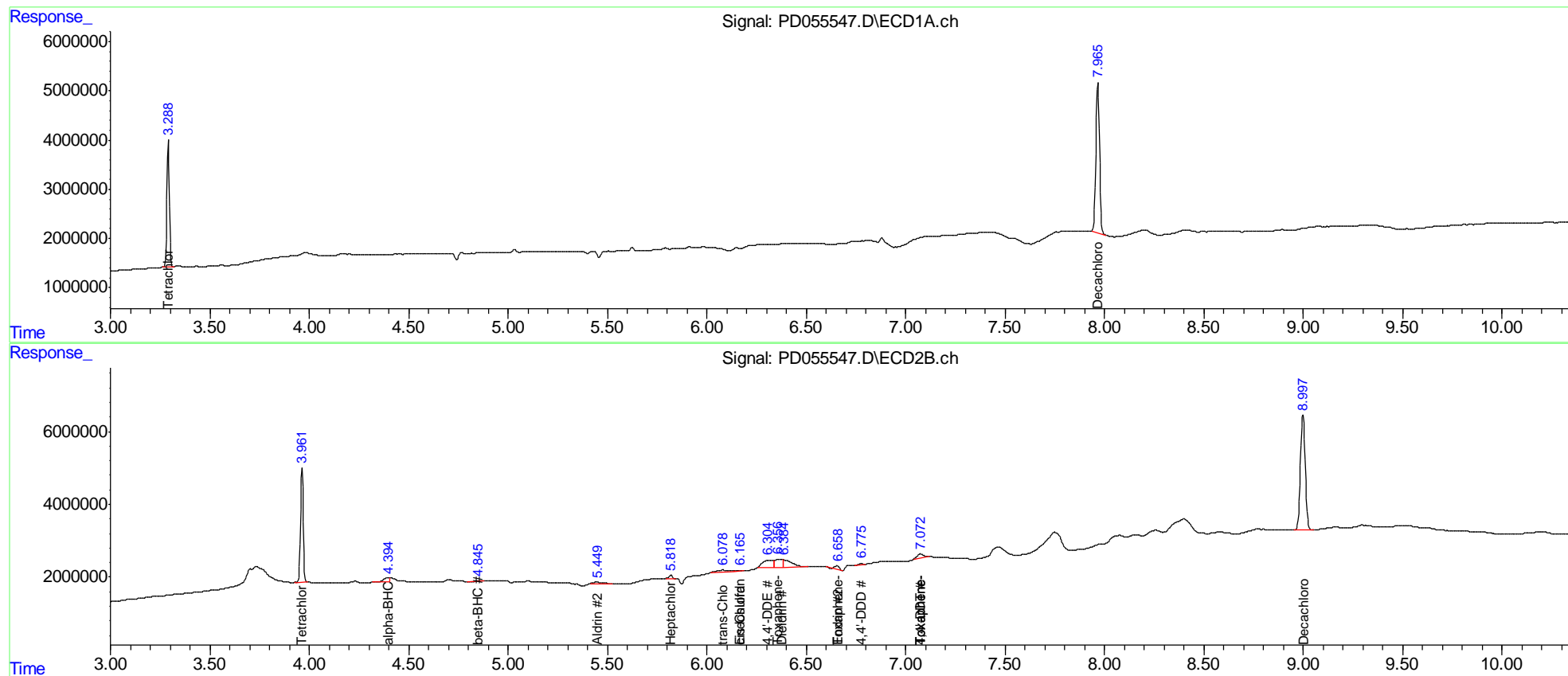
(f)=RT Delta > 1/2 Window (#)=Amounts differ by > 25% (m)=manual int.

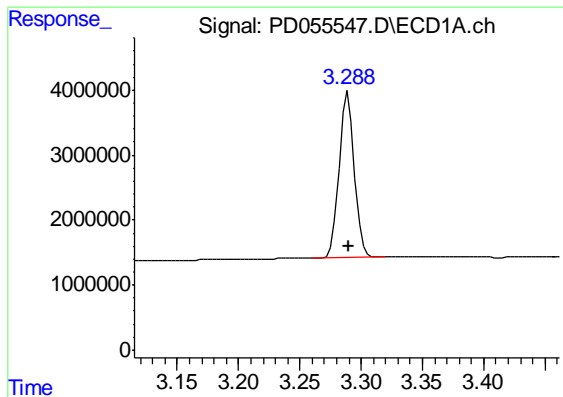
Data Path : Z:\pestpcbsrv\HPCHEM1\ECD\_D\Data\PD102319\  
 Data File : PD055547.D  
 Signal(s) : Signal #1: ECD1A.ch Signal #2: ECD2B.ch  
 Acq On : 23 Oct 2019 14:40  
 Operator : SG\AJ  
 Sample : PIBLK38  
 Misc :  
 ALS Vial : 2 Sample Multiplier: 1

Instrument :  
 ECD\_D  
 ClientSampleId :  
 PIBLK38

Integration File signal 1: autoint1.e  
 Integration File signal 2: autoint2.e  
 Quant Time: Oct 24 04:20:32 2019  
 Quant Method : Z:\pestpcbsrv\HPCHEM1\ECD\_D\Method\PD101819CLP.M  
 Quant Title : GC Extractables  
 QLast Update : Sat Oct 19 00:42:03 2019  
 Response via : Initial Calibration  
 Integrator: ChemStation

Volume Inj. : 1 µl  
 Signal #1 Phase : ZB-MR2 Signal #2 Phase: ZB-MR1  
 Signal #1 Info : 30M x 0.32mm x0.2 Signal #2 Info : 30M x 0.32mm x 0.50µm

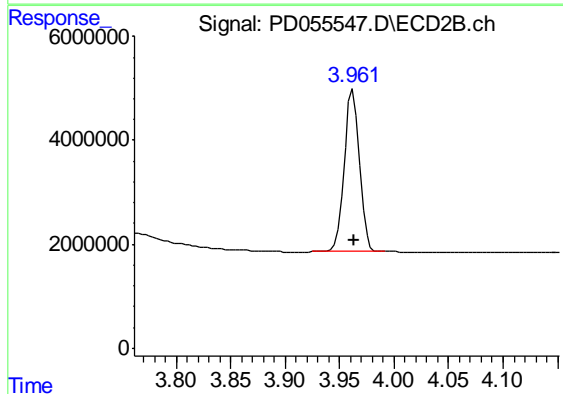




#1 Tetrachloro-m-xylene

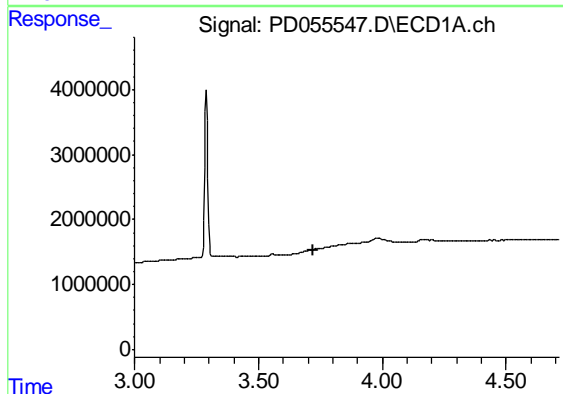
R.T.: 3.290 min  
 Delta R.T.: 0.000 min  
 Response: 21970001  
 Conc: 24.64 ng/ml

Instrument :  
 ECD\_D  
 ClientSampled :  
 PIBLK38



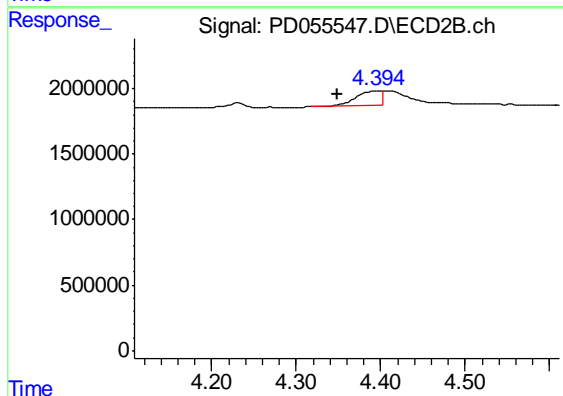
#1 Tetrachloro-m-xylene

R.T.: 3.963 min  
 Delta R.T.: 0.000 min  
 Response: 30277874  
 Conc: 22.49 ng/ml



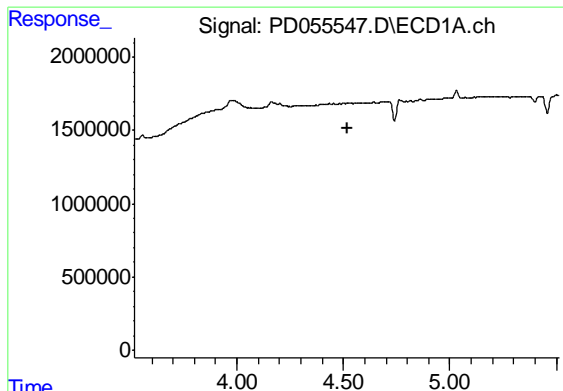
#2 alpha-BHC

R.T.: 0.000 min  
 Exp R.T. : 3.717 min  
 Response: 0  
 Conc: N.D.



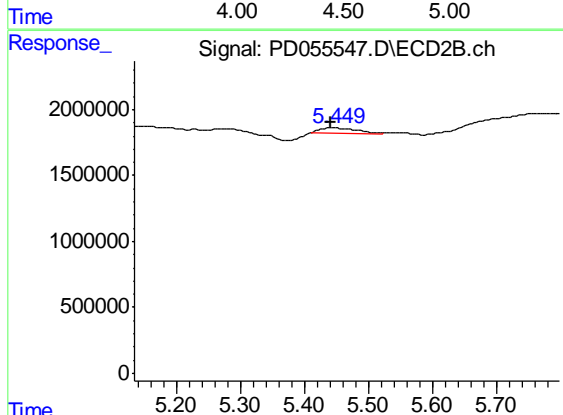
#2 alpha-BHC

R.T.: 4.396 min  
 Delta R.T.: 0.047 min  
 Response: 2301700  
 Conc: 1.18 ng/ml

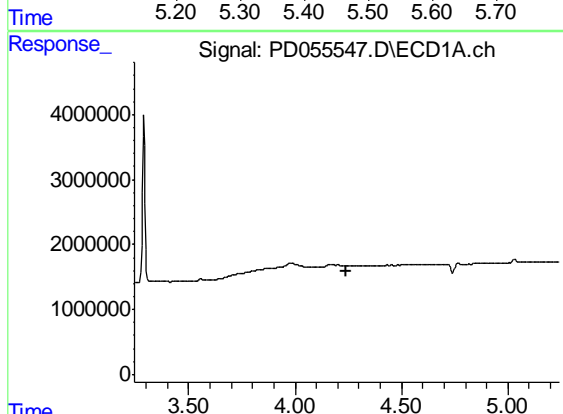


#5 Aldrin  
 R.T.: 0.000 min  
 Exp R.T.: 4.518 min  
 Response: 0  
 Conc: N.D.

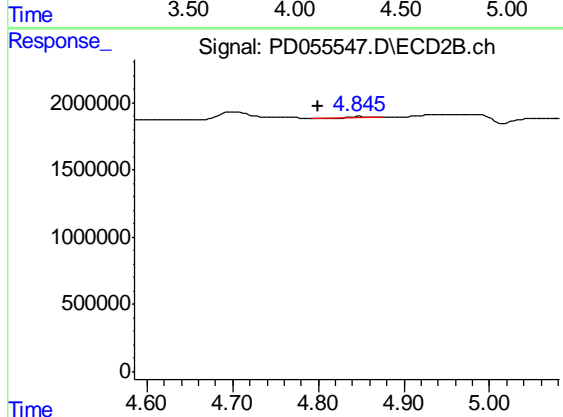
Instrument :  
 ECD\_D  
 ClientSampleId :  
 PIBLK38



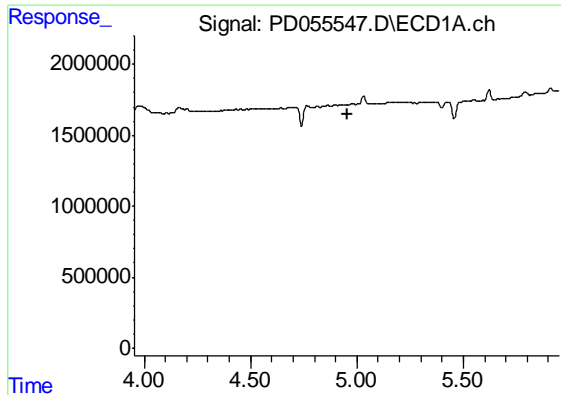
#5 Aldrin  
 R.T.: 5.450 min  
 Delta R.T.: 0.008 min  
 Response: 1615243  
 Conc: 0.93 ng/ml



#6 beta-BHC  
 R.T.: 0.000 min  
 Exp R.T.: 4.242 min  
 Response: 0  
 Conc: N.D.



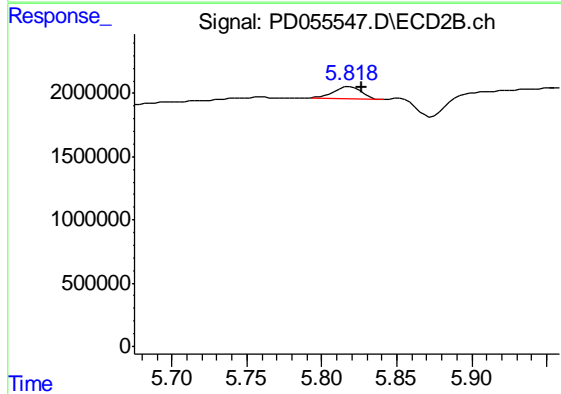
#6 beta-BHC  
 R.T.: 4.847 min  
 Delta R.T.: 0.047 min  
 Response: 105725  
 Conc: 0.12 ng/ml



#8 Heptachlor epoxide

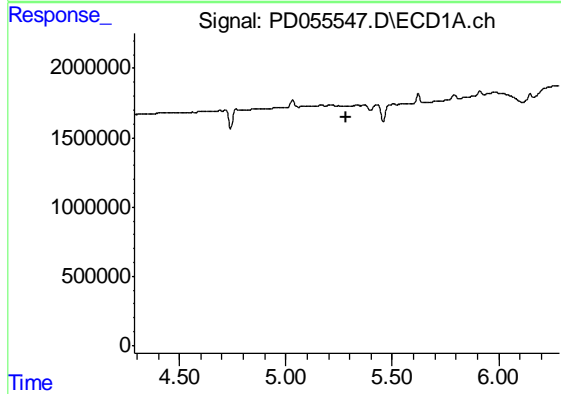
R.T.: 0.000 min  
 Exp R.T. : 4.955 min  
 Response: 0  
 Conc: N.D.

Instrument :  
 ECD\_D  
 ClientSampleId :  
 PIBLK38



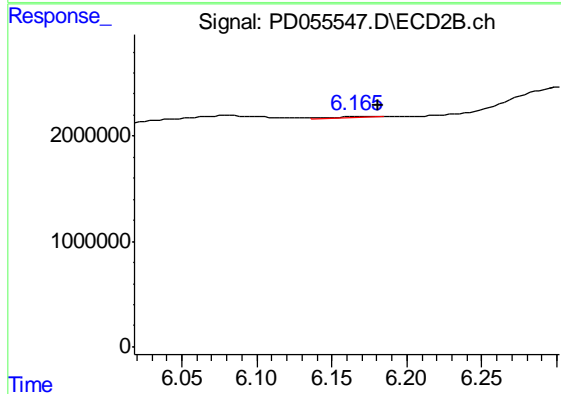
#8 Heptachlor epoxide

R.T.: 5.819 min  
 Delta R.T.: -0.007 min  
 Response: 1189613  
 Conc: 0.70 ng/ml



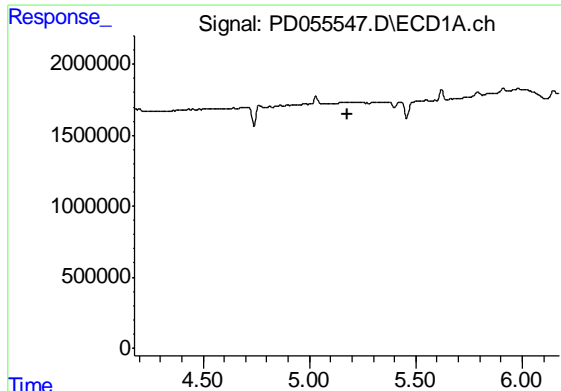
#9 Endosulfan I

R.T.: 0.000 min  
 Exp R.T. : 5.286 min  
 Response: 0  
 Conc: N.D.



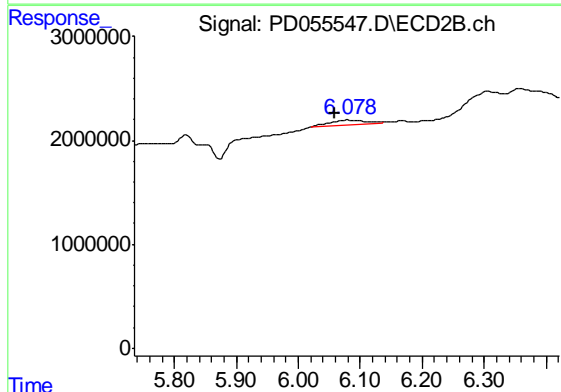
#9 Endosulfan I

R.T.: 6.167 min  
 Delta R.T.: -0.014 min  
 Response: 179202  
 Conc: 0.11 ng/ml

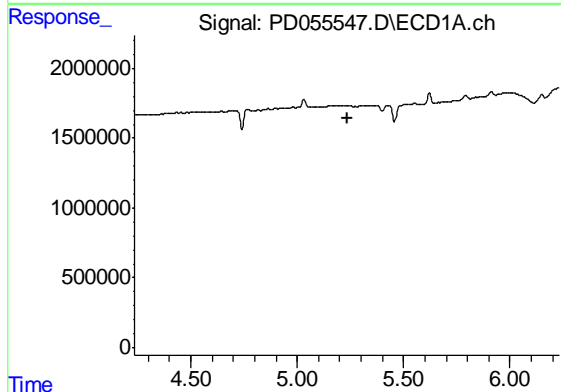


#10 trans-Chlordane  
 R.T.: 0.000 min  
 Exp R.T. : 5.177 min  
 Response: 0  
 Conc: N.D.

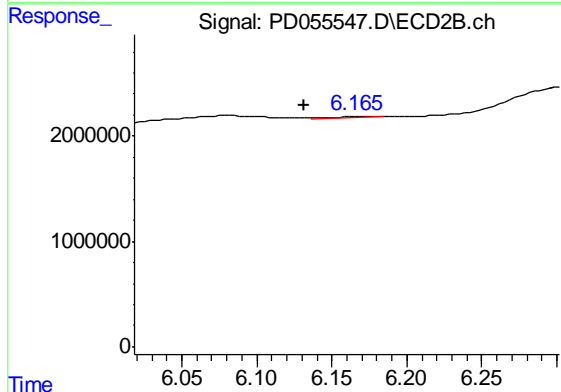
Instrument :  
 ECD\_D  
 ClientSampleId :  
 PIBLK38



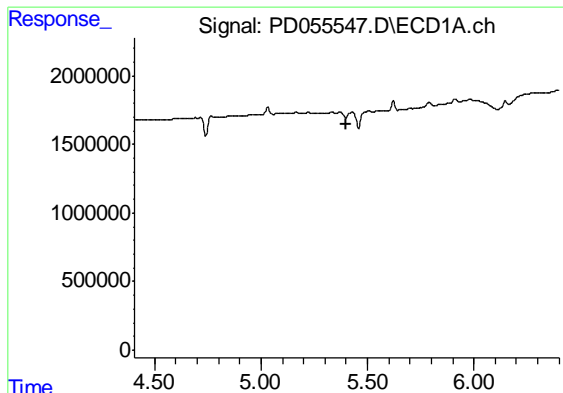
#10 trans-Chlordane  
 R.T.: 6.080 min  
 Delta R.T.: 0.021 min  
 Response: 1869930  
 Conc: 1.06 ng/ml



#11 cis-Chlordane  
 R.T.: 0.000 min  
 Exp R.T. : 5.234 min  
 Response: 0  
 Conc: N.D.



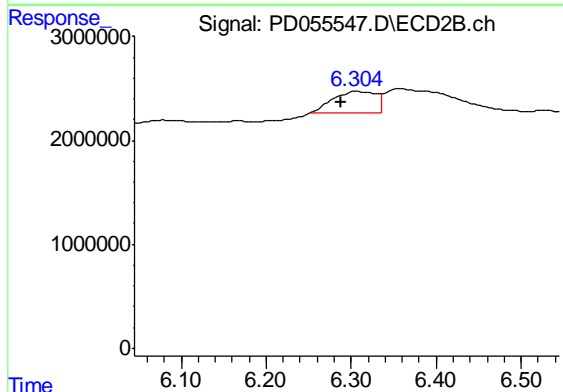
#11 cis-Chlordane  
 R.T.: 6.167 min  
 Delta R.T.: 0.036 min  
 Response: 179202  
 Conc: 0.10 ng/ml



#12 4,4'-DDE

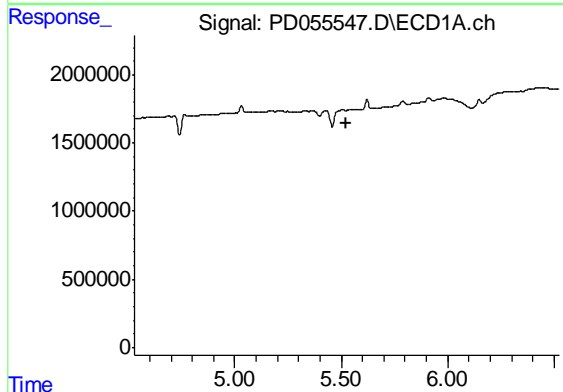
R.T.: 0.000 min  
 Exp R.T. : 5.402 min  
 Response: 0  
 Conc: N.D.

Instrument :  
 ECD\_D  
 ClientSampleId :  
 PIBLK38



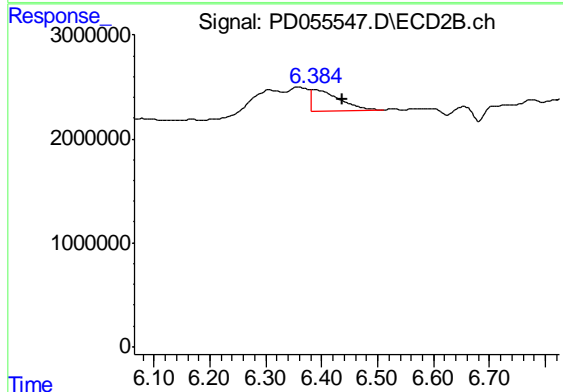
#12 4,4'-DDE

R.T.: 6.306 min  
 Delta R.T.: 0.018 min  
 Response: 7353521  
 Conc: 4.36 ng/ml



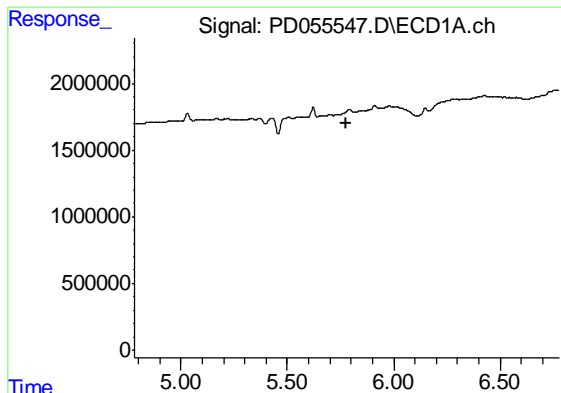
#13 Dieldrin

R.T.: 0.000 min  
 Exp R.T. : 5.526 min  
 Response: 0  
 Conc: N.D.



#13 Dieldrin

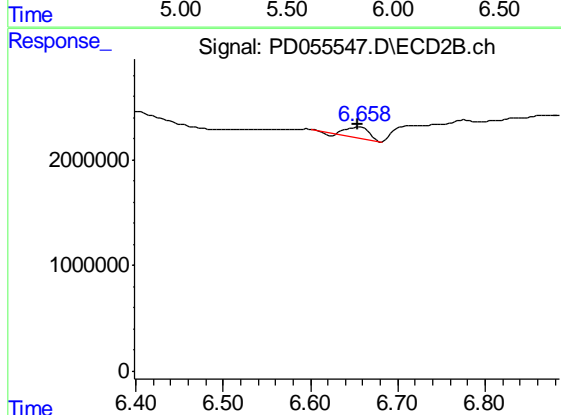
R.T.: 6.385 min  
 Delta R.T.: -0.052 min  
 Response: 6918141  
 Conc: 3.82 ng/ml



#14 Endrin

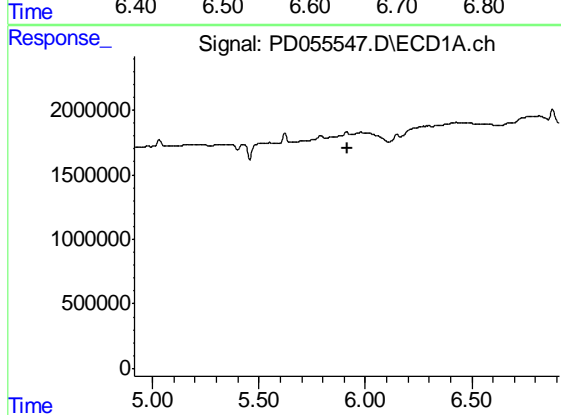
R.T.: 0.000 min  
 Exp R.T. : 5.780 min  
 Response: 0  
 Conc: N.D.

Instrument :  
 ECD\_D  
 ClientSampleId :  
 PIBLK38



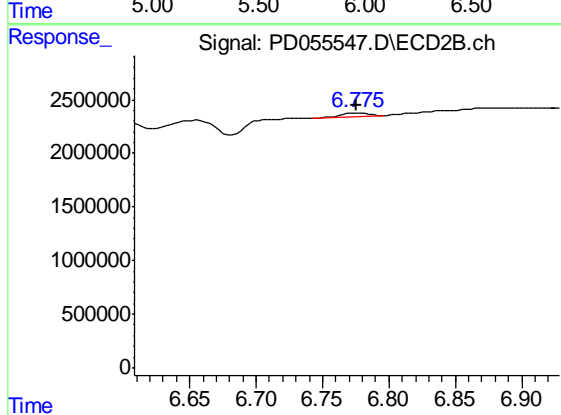
#14 Endrin

R.T.: 6.656 min  
 Delta R.T.: 0.002 min  
 Response: 1712356  
 Conc: 1.23 ng/ml



#16 4,4'-DDD

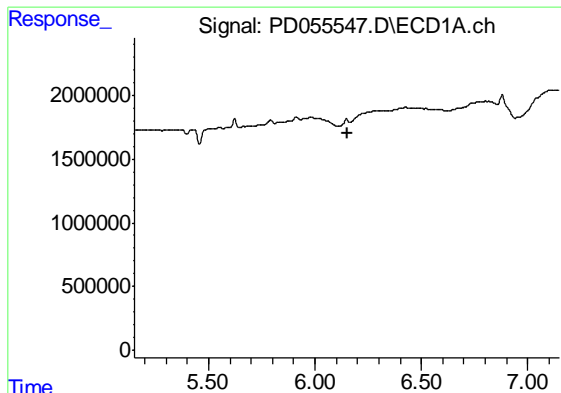
R.T.: 0.000 min  
 Exp R.T. : 5.914 min  
 Response: 0  
 Conc: N.D.



#16 4,4'-DDD

R.T.: 6.776 min  
 Delta R.T.: 0.000 min  
 Response: 365868  
 Conc: 0.26 ng/ml

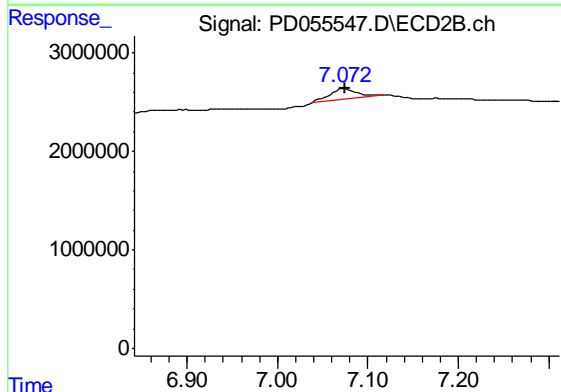




#17 4,4'-DDT

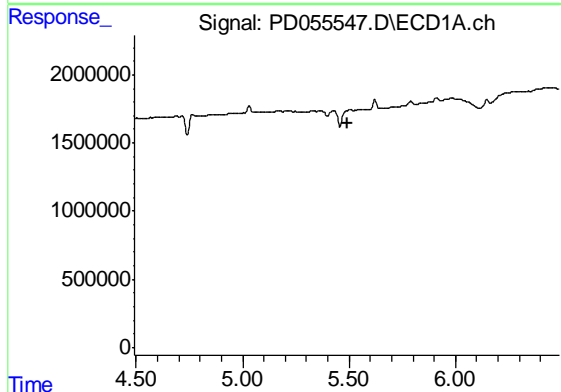
R.T.: 0.000 min  
 Exp R.T. : 6.150 min  
 Response: 0  
 Conc: N.D.

Instrument :  
 ECD\_D  
 ClientSampleId :  
 PIBLK38



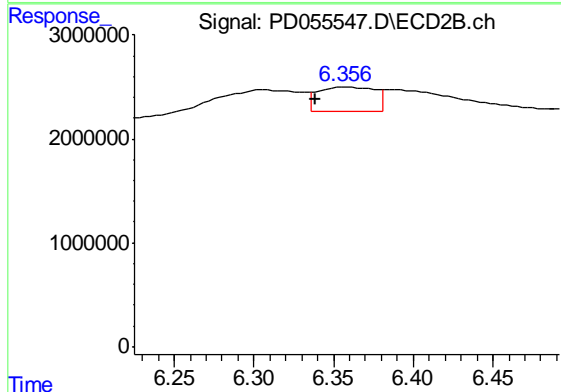
#17 4,4'-DDT

R.T.: 7.074 min  
 Delta R.T.: 0.000 min  
 Response: 2530848  
 Conc: 1.87 ng/ml



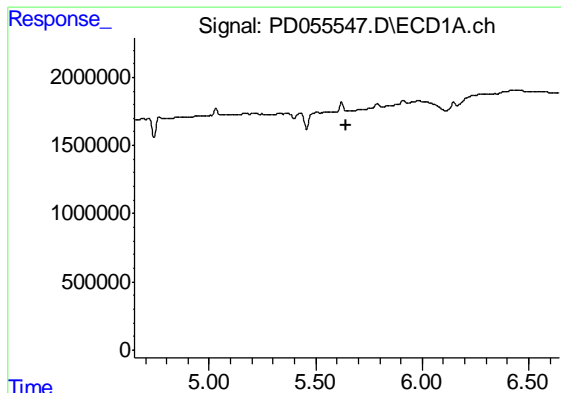
#22 Toxaphene-1

R.T.: 0.000 min  
 Exp R.T. : 5.491 min  
 Response: 0  
 Conc: N.D.



#22 Toxaphene-1

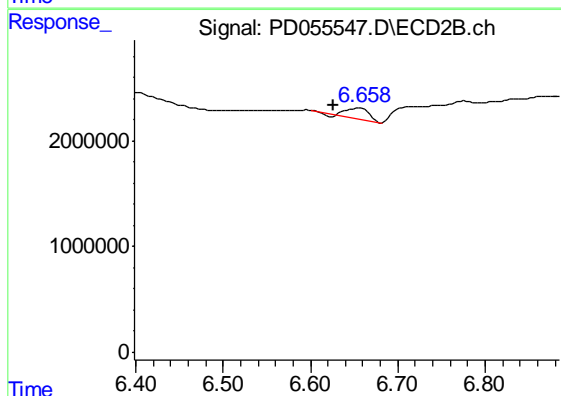
R.T.: 6.357 min  
 Delta R.T.: 0.019 min  
 Response: 5739672  
 Conc: 735.04 ng/ml



#23 Toxaphene-2

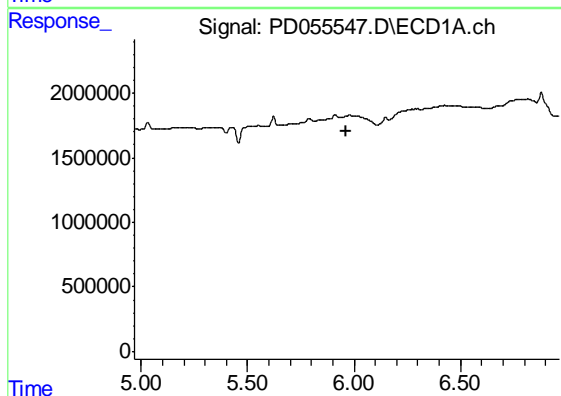
R.T.: 0.000 min  
 Exp R.T. : 5.646 min  
 Response: 0  
 Conc: N.D.

Instrument :  
 ECD\_D  
 ClientSampleId :  
 PIBLK38



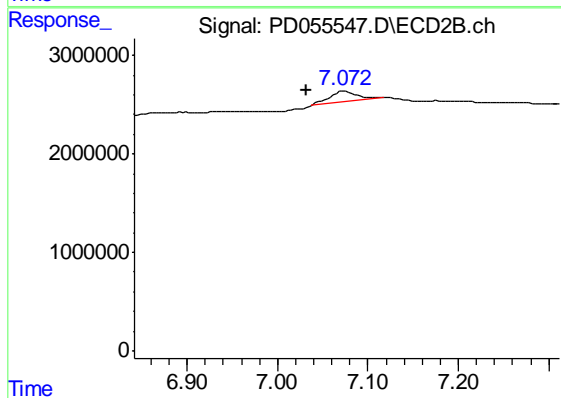
#23 Toxaphene-2

R.T.: 6.656 min  
 Delta R.T.: 0.029 min  
 Response: 1712356  
 Conc: 175.82 ng/ml



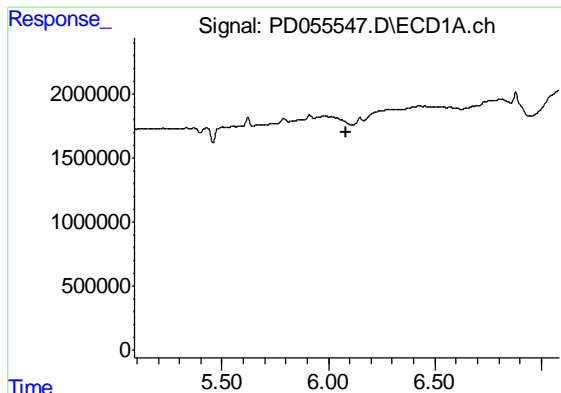
#24 Toxaphene-3

R.T.: 0.000 min  
 Exp R.T. : 5.966 min  
 Response: 0  
 Conc: N.D.



#24 Toxaphene-3

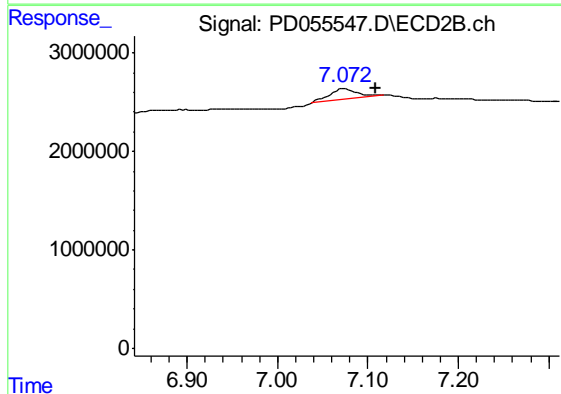
R.T.: 7.074 min  
 Delta R.T.: 0.042 min  
 Response: 2530848  
 Conc: 186.60 ng/ml



#25 Toxaphene-4

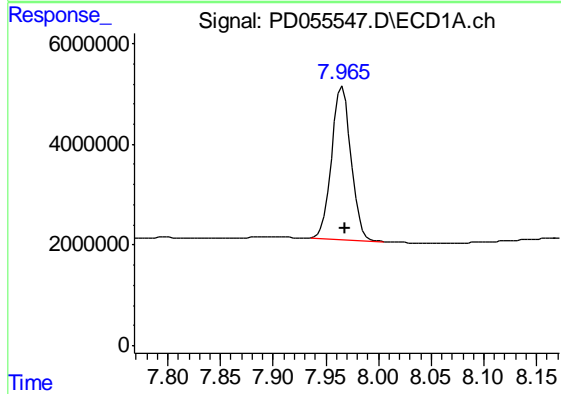
R.T.: 0.000 min  
 Exp R.T. : 6.085 min  
 Response: 0  
 Conc: N.D.

Instrument :  
 ECD\_D  
 ClientSampleId :  
 PIBLK38



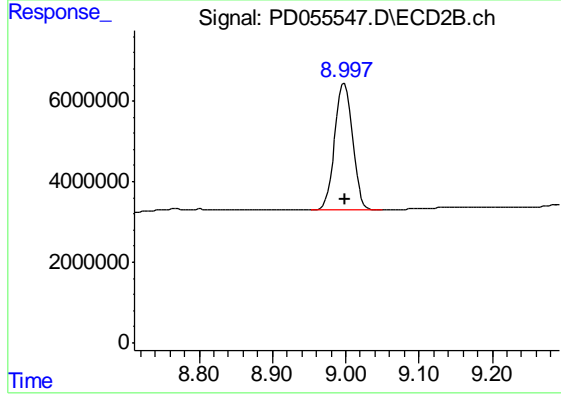
#25 Toxaphene-4

R.T.: 7.074 min  
 Delta R.T.: -0.035 min  
 Response: 2530848  
 Conc: 65.68 ng/ml



#27 Decachlorobiphenyl

R.T.: 7.966 min  
 Delta R.T.: -0.003 min  
 Response: 38869066  
 Conc: 42.45 ng/ml



#27 Decachlorobiphenyl

R.T.: 8.999 min  
 Delta R.T.: 0.000 min  
 Response: 53504647  
 Conc: 41.01 ng/ml