

Data Path : Z:\pestpcbsrv\HPCHEM1\ECD\_D\Data\PD102319\  
 Data File : PD055558.D  
 Signal(s) : Signal #1: ECD1A.ch Signal #2: ECD2B.ch  
 Acq On : 23 Oct 2019 17:44  
 Operator : SG\AJ  
 Sample : K5482-06DL 2X  
 Misc :  
 ALS Vial : 21 Sample Multiplier: 1

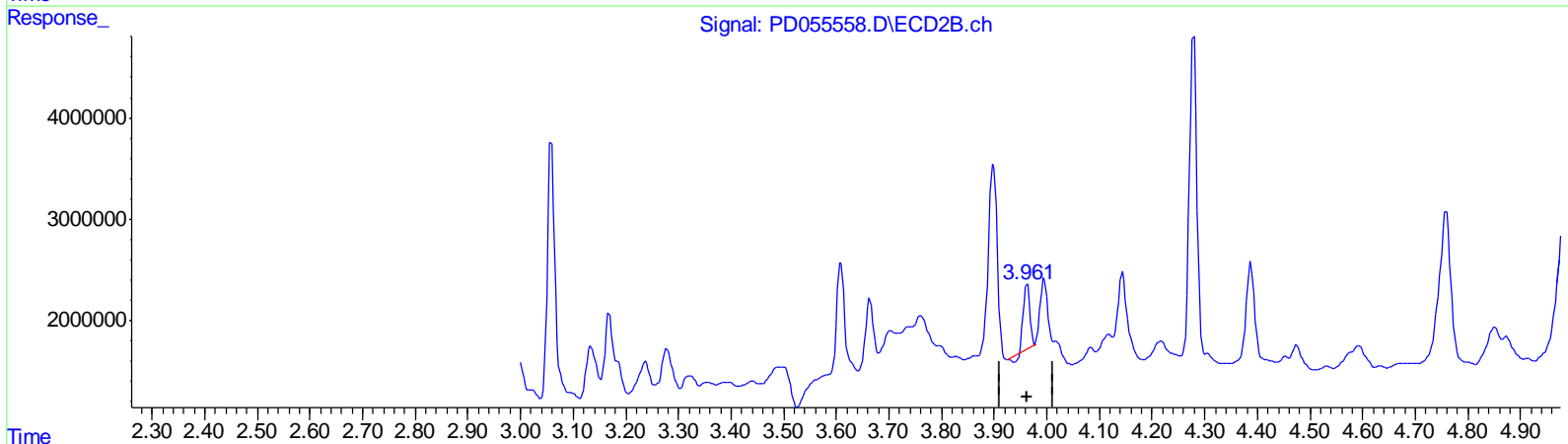
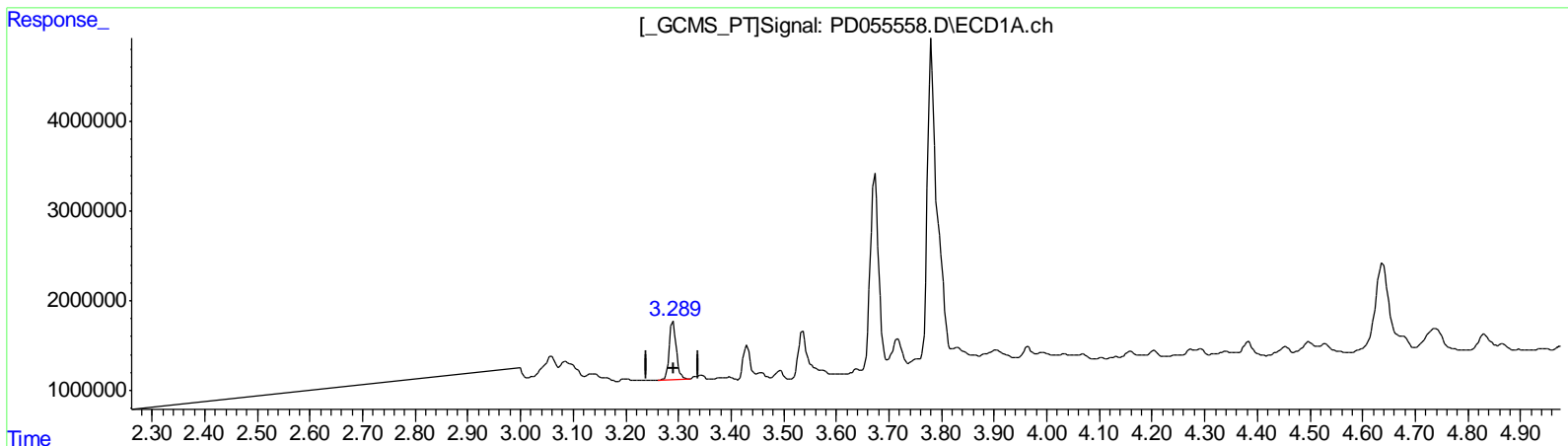
Instrument :  
 ECD\_D  
 ClientSampled :  
 C0AZ7DL

Manual Integrations  
 APPROVED

Ankita  
 10/24/2019 12:57:54 PM

Integration File signal 1: autoint1.e  
 Integration File signal 2: autoint2.e  
 Quant Time: Oct 24 04:24:17 2019  
 Quant Method : Z:\pestpcbsrv\HPCHEM1\ECD\_D\Method\PD101819CLP.M  
 Quant Title : GC Extractables  
 QLast Update : Sat Oct 19 00:42:03 2019  
 Response via : Initial Calibration  
 Integrator: ChemStation

Volume Inj. : 1 µl  
 Signal #1 Phase : ZB-MR2 Signal #2 Phase: ZB-MR1  
 Signal #1 Info : 30M x 0.32mm x0.2 Signal #2 Info : 30M x 0.32mm x 0.50µm



QEdit

(1) Tetrachloro-m-xylene (SA)  
 3.290min 6.621 ng/ml  
 response 5903507

(1) Tetrachloro-m-xylene #2 (SA)  
 3.963min 3.804 ng/ml  
 response 5121785

(+) = Expected Retention Time

Data Path : Z:\pestpcbsrv\HPCHEM1\ECD\_D\Data\PD102319\  
 Data File : PD055558.D  
 Signal(s) : Signal #1: ECD1A.ch Signal #2: ECD2B.ch  
 Acq On : 23 Oct 2019 17:44  
 Operator : SG\AJ  
 Sample : K5482-06DL 2X  
 Misc :  
 ALS Vial : 21 Sample Multiplier: 1

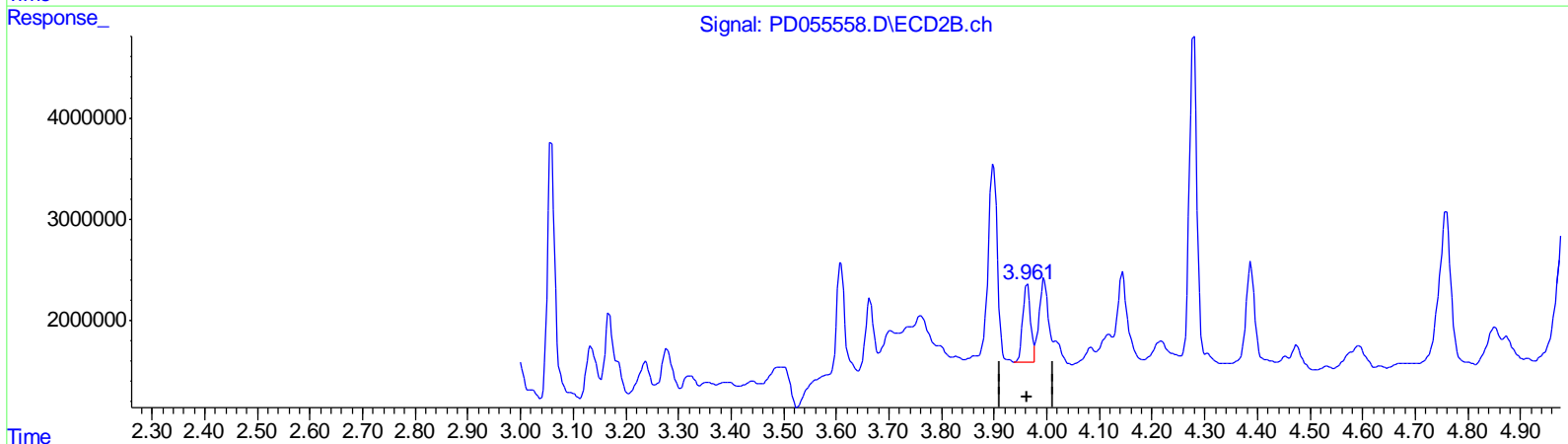
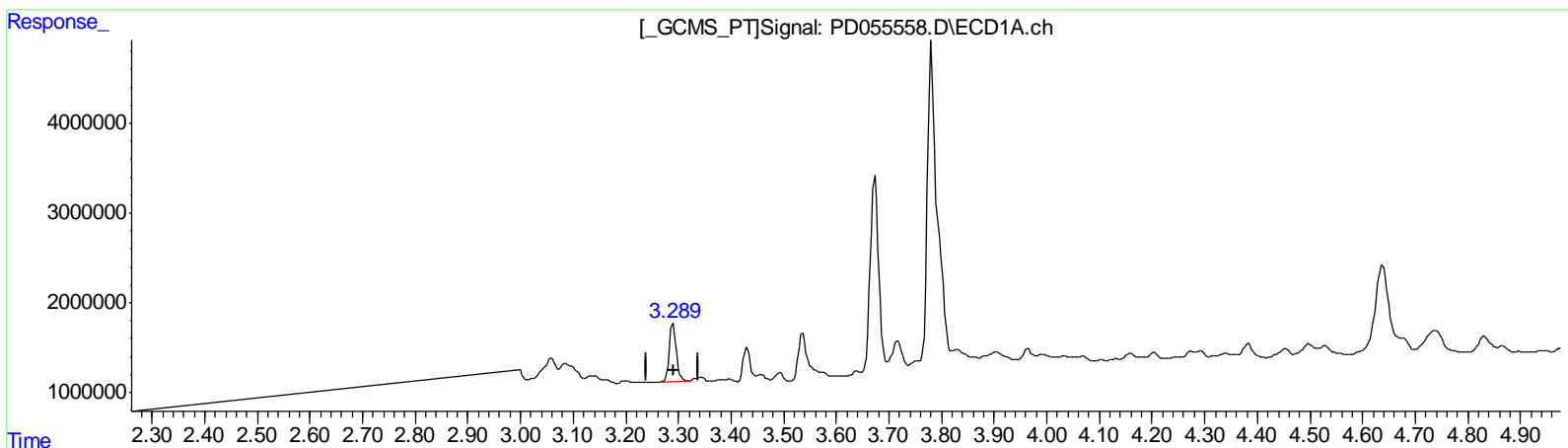
Instrument :  
 ECD\_D  
 ClientSampled :  
 C0AZ7DL

Manual Integrations  
 APPROVED

Ankita  
 10/24/2019 12:57:54 PM

Integration File signal 1: autoint1.e  
 Integration File signal 2: autoint2.e  
 Quant Time: Oct 24 04:24:17 2019  
 Quant Method : Z:\pestpcbsrv\HPCHEM1\ECD\_D\Method\PD101819CLP.M  
 Quant Title : GC Extractables  
 QLast Update : Sat Oct 19 00:42:03 2019  
 Response via : Initial Calibration  
 Integrator: ChemStation

Volume Inj. : 1 µl  
 Signal #1 Phase : ZB-MR2 Signal #2 Phase: ZB-MR1  
 Signal #1 Info : 30M x 0.32mm x0.2 Signal #2 Info : 30M x 0.32mm x 0.50µm



QEdit

(1) Tetrachloro-m-xylene (SA)  
 3.290min 6.621 ng/ml  
 response 5903507

(1) Tetrachloro-m-xylene #2 (SA)  
 3.961min 6.178 ng/ml m  
 response 8317625

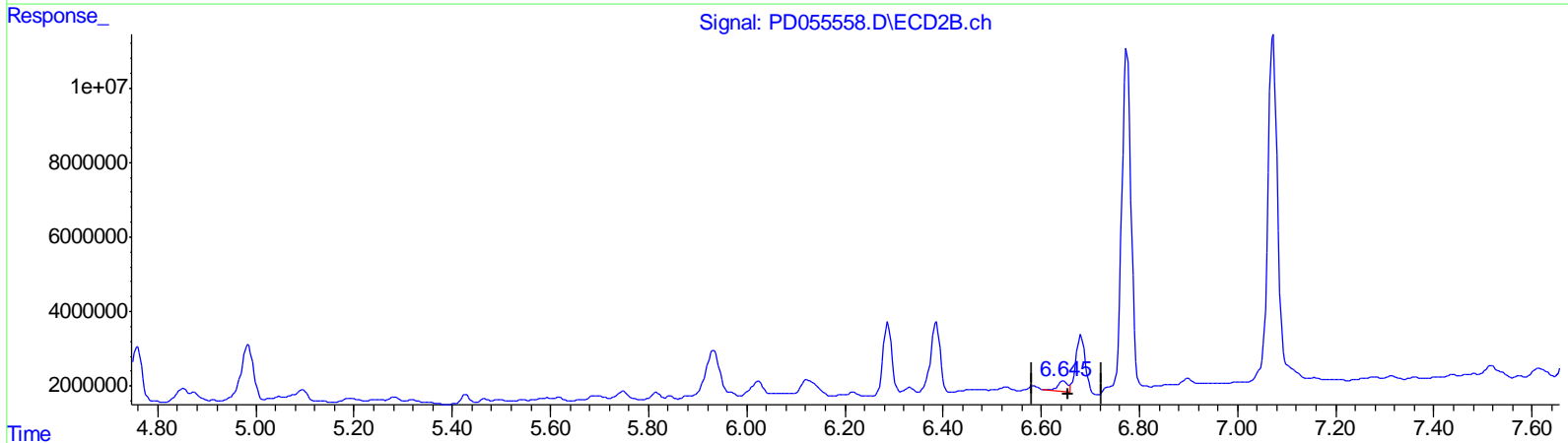
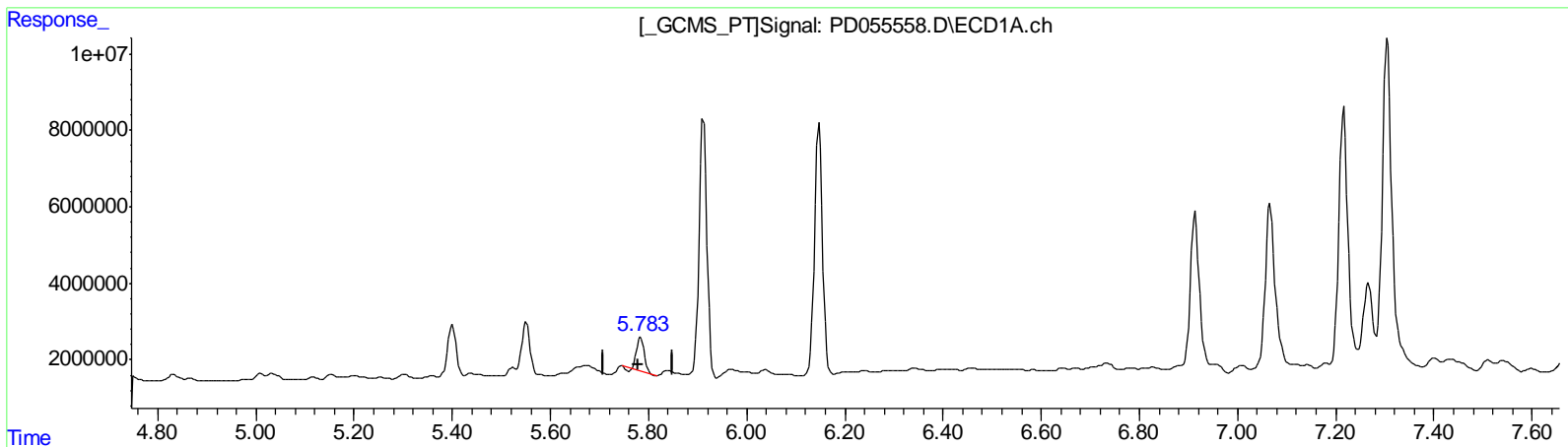
Data Path : Z:\pestpcbsrv\HPCHEM1\ECD\_D\Data\PD102319\  
 Data File : PD055558.D  
 Signal(s) : Signal #1: ECD1A.ch Signal #2: ECD2B.ch  
 Acq On : 23 Oct 2019 17:44  
 Operator : SG\AJ  
 Sample : K5482-06DL 2X  
 Misc :  
 ALS Vial : 21 Sample Multiplier: 1

**Instrument :**  
 ECD\_D  
**ClientSampled :**  
 C0AZ7DL

**Manual Integrations**  
**APPROVED**  
 Ankita  
 10/24/2019 12:57:54 PM

Integration File signal 1: autoint1.e  
 Integration File signal 2: autoint2.e  
 Quant Time: Oct 24 04:24:17 2019  
 Quant Method : Z:\pestpcbsrv\HPCHEM1\ECD\_D\Method\PD101819CLP.M  
 Quant Title : GC Extractables  
 QLast Update : Sat Oct 19 00:42:03 2019  
 Response via : Initial Calibration  
 Integrator: ChemStation

Volume Inj. : 1 µl  
 Signal #1 Phase : ZB-MR2 Signal #2 Phase: ZB-MR1  
 Signal #1 Info : 30M x 0.32mm x0.2 Signal #2 Info : 30M x 0.32mm x 0.50µm



QEdit

(14) Endrin (MA)  
 5.784min 10.088 ng/ml  
 response 9035948

(14) Endrin #2 (MA)  
 6.646min 2.618 ng/ml  
 response 3656480

(+) = Expected Retention Time

Data Path : Z:\pestpcbsrv\HPCHEM1\ECD\_D\Data\PD102319\  
 Data File : PD055558.D  
 Signal(s) : Signal #1: ECD1A.ch Signal #2: ECD2B.ch  
 Acq On : 23 Oct 2019 17:44  
 Operator : SG\AJ  
 Sample : K5482-06DL 2X  
 Misc :  
 ALS Vial : 21 Sample Multiplier: 1

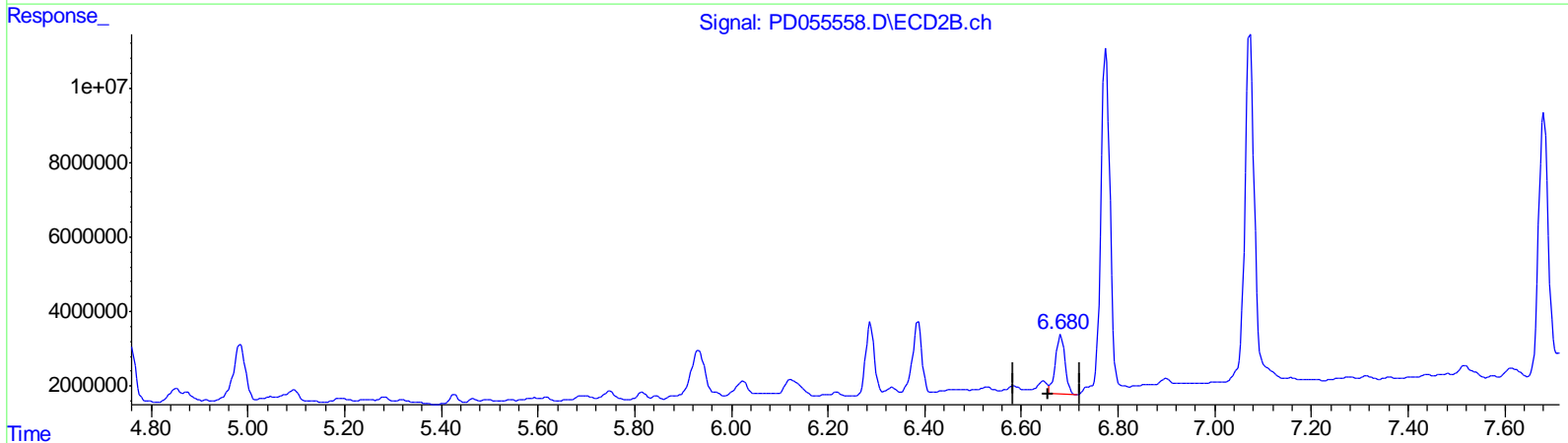
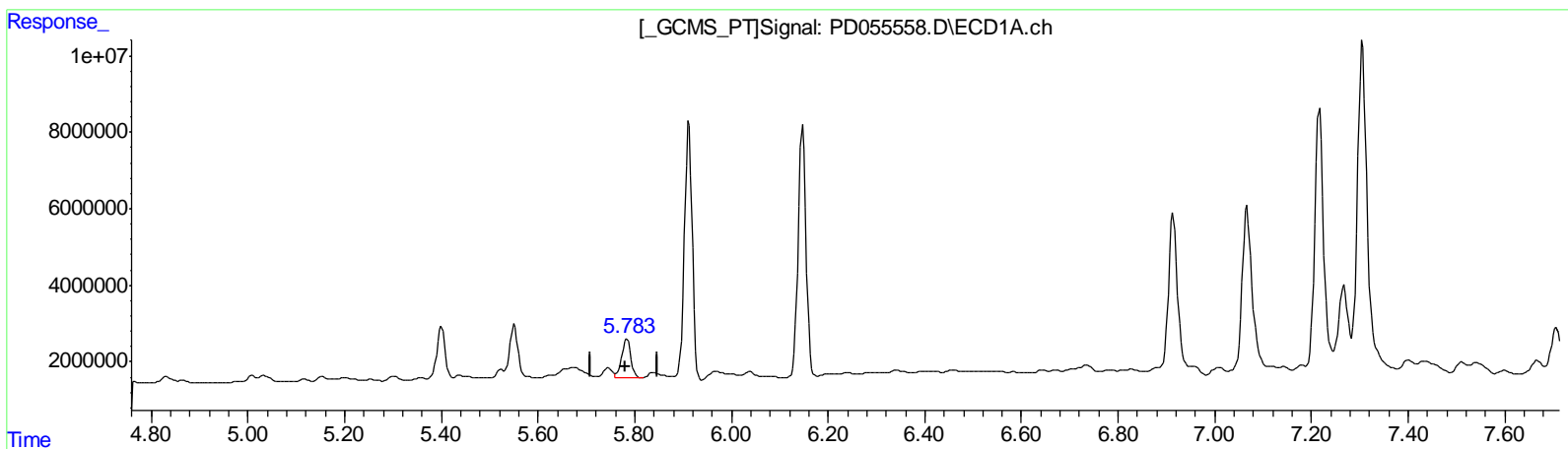
Instrument :  
 ECD\_D  
 ClientSampled :  
 C0AZ7DL

Manual Integrations  
 APPROVED

Ankita  
 10/24/2019 12:57:54 PM

Integration File signal 1: autoint1.e  
 Integration File signal 2: autoint2.e  
 Quant Time: Oct 24 04:24:17 2019  
 Quant Method : Z:\pestpcbsrv\HPCHEM1\ECD\_D\Method\PD101819CLP.M  
 Quant Title : GC Extractables  
 QLast Update : Sat Oct 19 00:42:03 2019  
 Response via : Initial Calibration  
 Integrator: ChemStation

Volume Inj. : 1 µl  
 Signal #1 Phase : ZB-MR2 Signal #2 Phase: ZB-MR1  
 Signal #1 Info : 30M x 0.32mm x0.2 Signal #2 Info : 30M x 0.32mm x 0.50µm



QEdit

(14) Endrin (MA)  
 5.783min 13.893 ng/ml m  
 response 12443744

(14) Endrin #2 (MA)  
 6.680min 15.336 ng/ml m  
 response 21420464

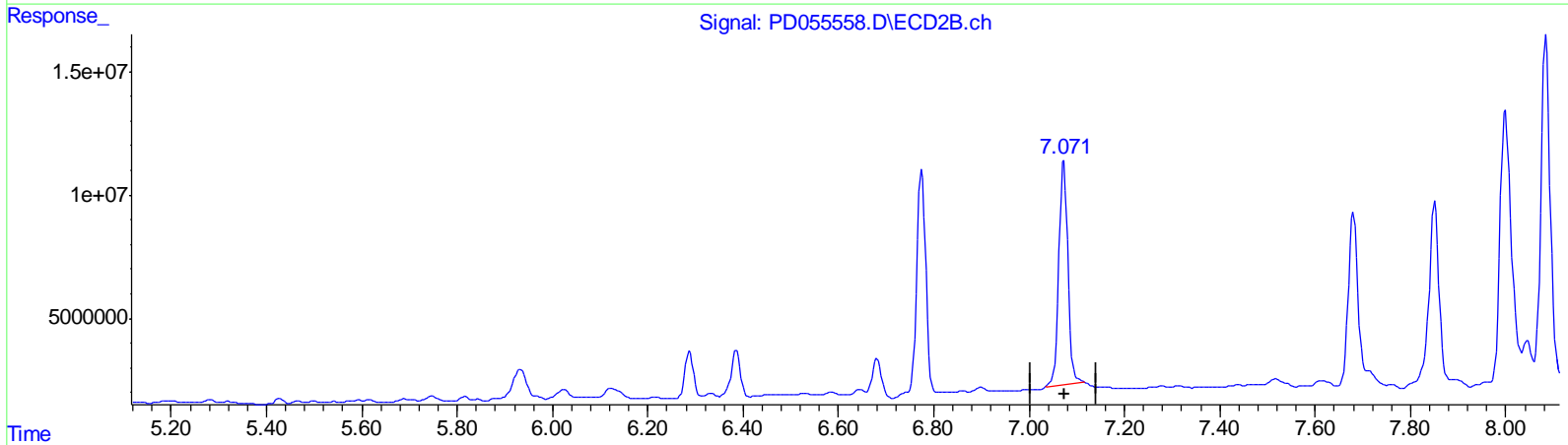
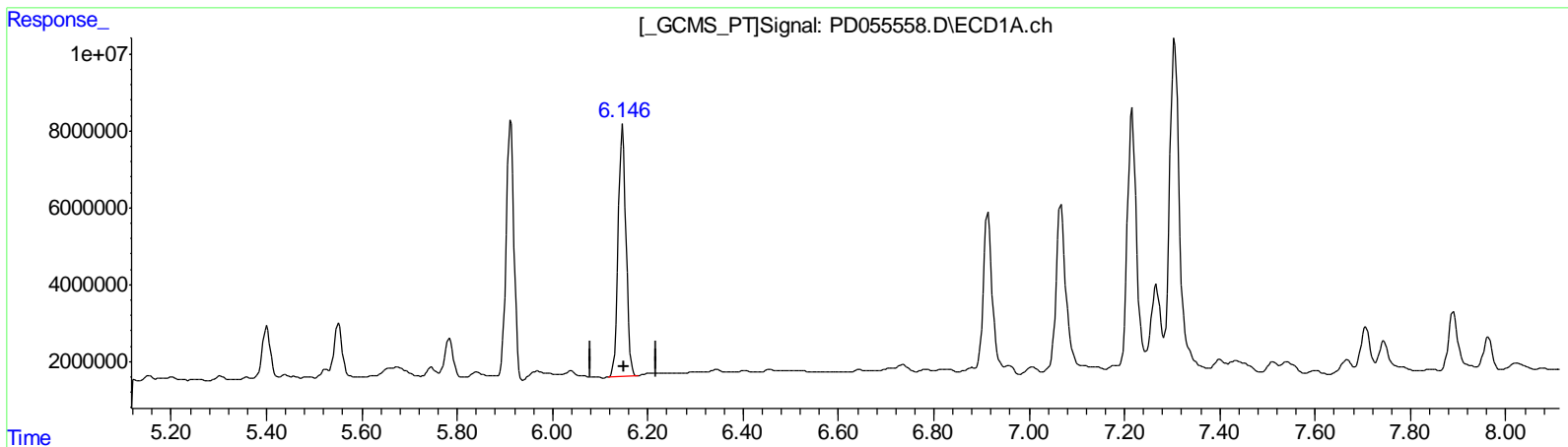
Data Path : Z:\pestpcbsrv\HPCHEM1\ECD\_D\Data\PD102319\  
 Data File : PD055558.D  
 Signal(s) : Signal #1: ECD1A.ch Signal #2: ECD2B.ch  
 Acq On : 23 Oct 2019 17:44  
 Operator : SG\AJ  
 Sample : K5482-06DL 2X  
 Misc :  
 ALS Vial : 21 Sample Multiplier: 1

**Instrument :**  
 ECD\_D  
**ClientSampled :**  
 C0AZ7DL

**Manual Integrations**  
**APPROVED**  
 Ankita  
 10/24/2019 12:57:54 PM

Integration File signal 1: autoint1.e  
 Integration File signal 2: autoint2.e  
 Quant Time: Oct 24 04:24:17 2019  
 Quant Method : Z:\pestpcbsrv\HPCHEM1\ECD\_D\Method\PD101819CLP.M  
 Quant Title : GC Extractables  
 QLast Update : Sat Oct 19 00:42:03 2019  
 Response via : Initial Calibration  
 Integrator: ChemStation

Volume Inj. : 1 µl  
 Signal #1 Phase : ZB-MR2 Signal #2 Phase: ZB-MR1  
 Signal #1 Info : 30M x 0.32mm x0.2 Signal #2 Info : 30M x 0.32mm x 0.50µm



QEdit

(17) 4,4'-DDT (MA)  
 6.147min 110.113 ng/ml  
 response 74655695

(17) 4,4'-DDT #2 (MA)  
 7.073min 88.903 ng/ml  
 response 120501368

(+) = Expected Retention Time

Data Path : Z:\pestpcbsrv\HPCHEM1\ECD\_D\Data\PD102319\  
 Data File : PD055558.D  
 Signal(s) : Signal #1: ECD1A.ch Signal #2: ECD2B.ch  
 Acq On : 23 Oct 2019 17:44  
 Operator : SG\AJ  
 Sample : K5482-06DL 2X  
 Misc :  
 ALS Vial : 21 Sample Multiplier: 1

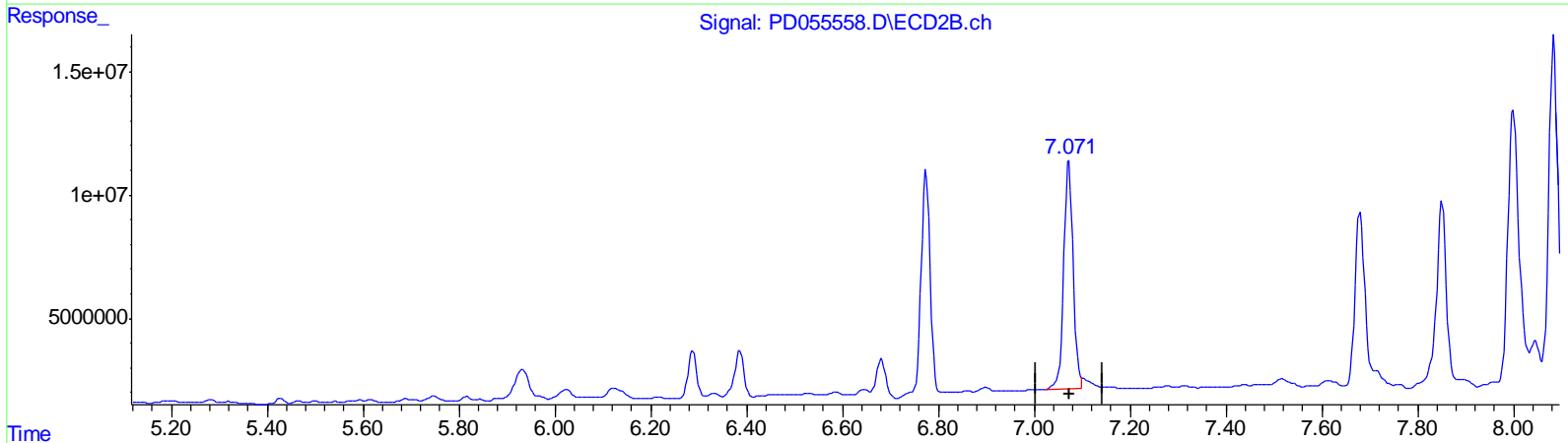
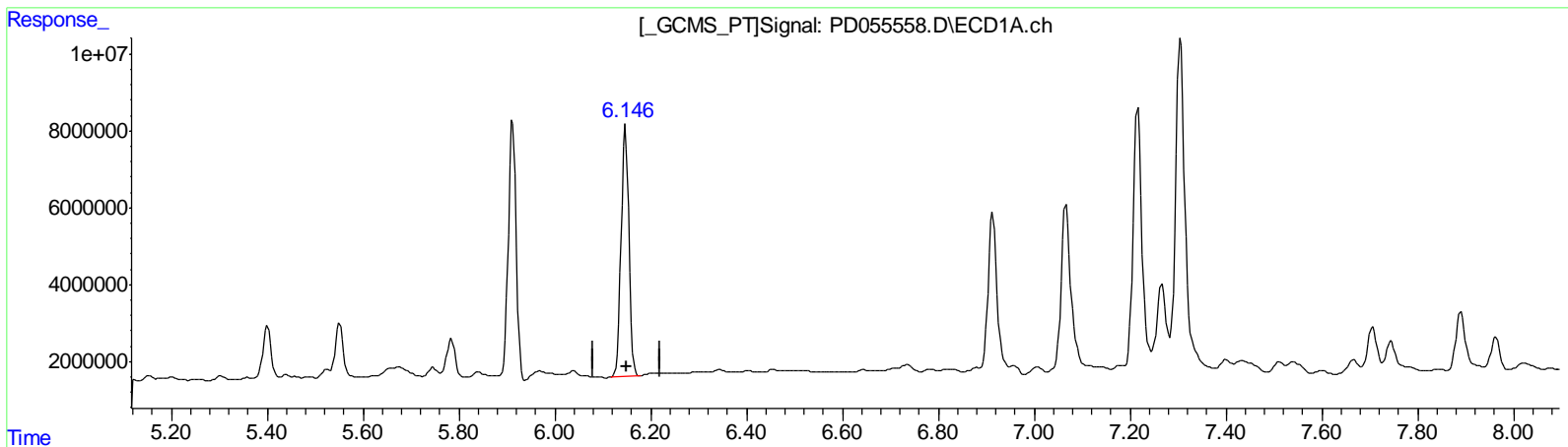
Instrument :  
 ECD\_D  
 ClientSampled :  
 C0AZ7DL

Manual Integrations  
 APPROVED

Ankita  
 10/24/2019 12:57:54 PM

Integration File signal 1: autoint1.e  
 Integration File signal 2: autoint2.e  
 Quant Time: Oct 24 04:24:17 2019  
 Quant Method : Z:\pestpcbsrv\HPCHEM1\ECD\_D\Method\PD101819CLP.M  
 Quant Title : GC Extractables  
 QLast Update : Sat Oct 19 00:42:03 2019  
 Response via : Initial Calibration  
 Integrator: ChemStation

Volume Inj. : 1 µl  
 Signal #1 Phase : ZB-MR2 Signal #2 Phase: ZB-MR1  
 Signal #1 Info : 30M x 0.32mm x0.2 Signal #2 Info : 30M x 0.32mm x 0.50µm



QEdit

(17) 4,4'-DDT (MA)  
 6.147min 110.113 ng/ml  
 response 74655695

(17) 4,4'-DDT #2 (MA)  
 7.071min 93.018 ng/ml m  
 response 126078468

Data Path : Z:\pestpcbsrv\HPCHEM1\ECD\_D\Data\PD102319\  
 Data File : PD055558.D  
 Signal(s) : Signal #1: ECD1A.ch Signal #2: ECD2B.ch  
 Acq On : 23 Oct 2019 17:44  
 Operator : SG\AJ  
 Sample : K5482-06DL 2X  
 Misc :  
 ALS Vial : 21 Sample Multiplier: 1

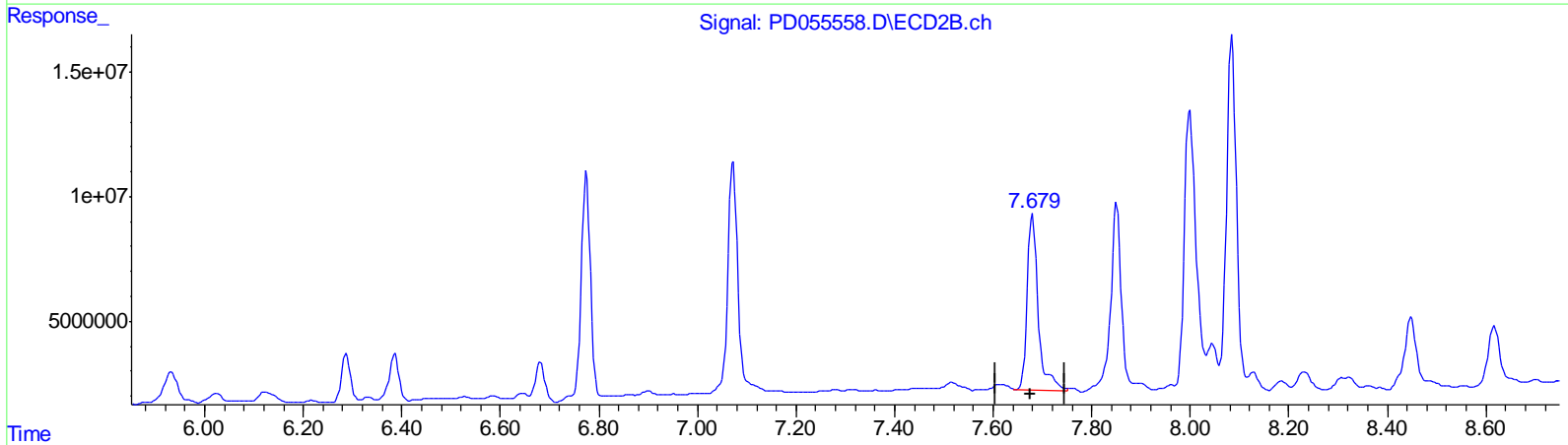
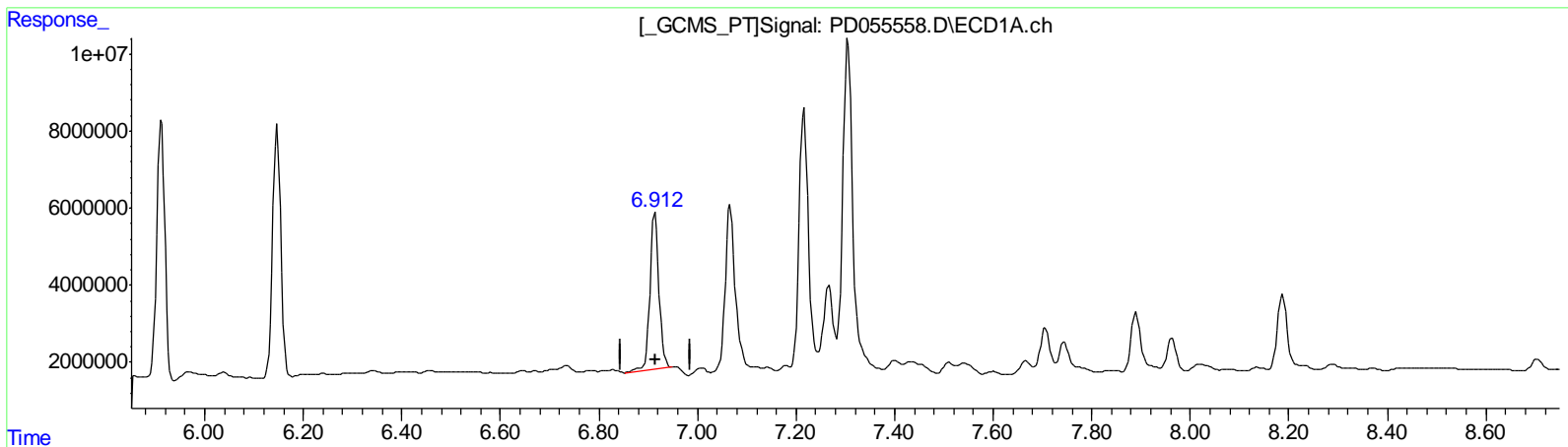
Instrument :  
 ECD\_D  
 ClientSampleID :  
 C0AZ7DL

Manual Integrations  
 APPROVED

Ankita  
 10/24/2019 12:57:54 PM

Integration File signal 1: autoint1.e  
 Integration File signal 2: autoint2.e  
 Quant Time: Oct 24 04:24:17 2019  
 Quant Method : Z:\pestpcbsrv\HPCHEM1\ECD\_D\Method\PD101819CLP.M  
 Quant Title : GC Extractables  
 QLast Update : Sat Oct 19 00:42:03 2019  
 Response via : Initial Calibration  
 Integrator: ChemStation

Volume Inj. : 1 µl  
 Signal #1 Phase : ZB-MR2 Signal #2 Phase: ZB-MR1  
 Signal #1 Info : 30M x 0.32mm x0.2 Signal #2 Info : 30M x 0.32mm x 0.50µm



QEdit

(21) Endrin ketone (B)  
 6.914min 53.212 ng/ml  
 response 52008505

(21) Endrin ketone #2 (B)  
 7.680min 68.747 ng/ml  
 response 110105735

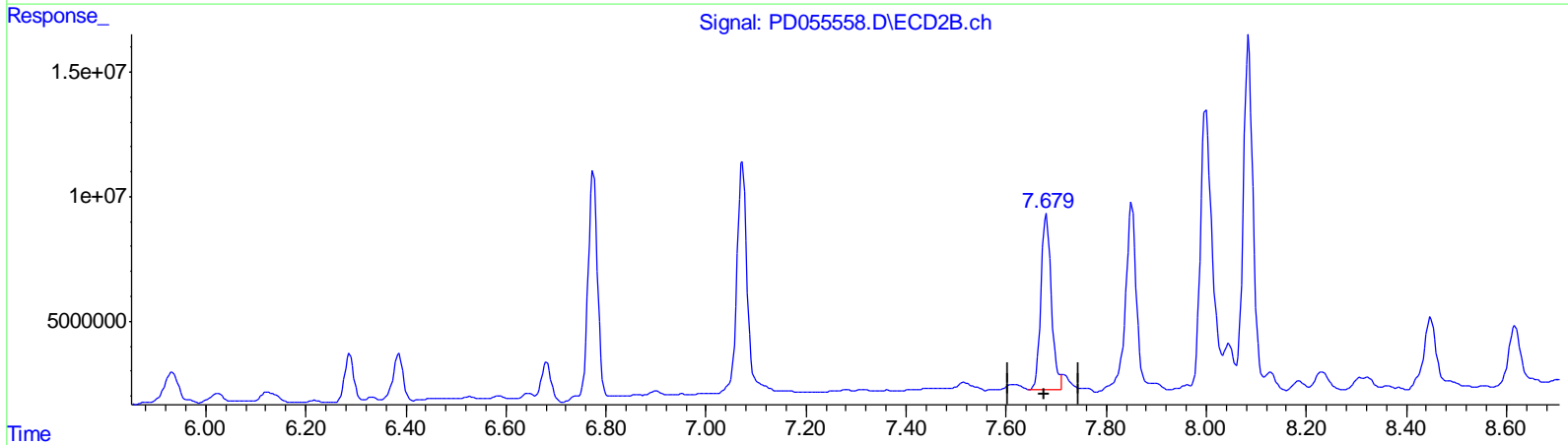
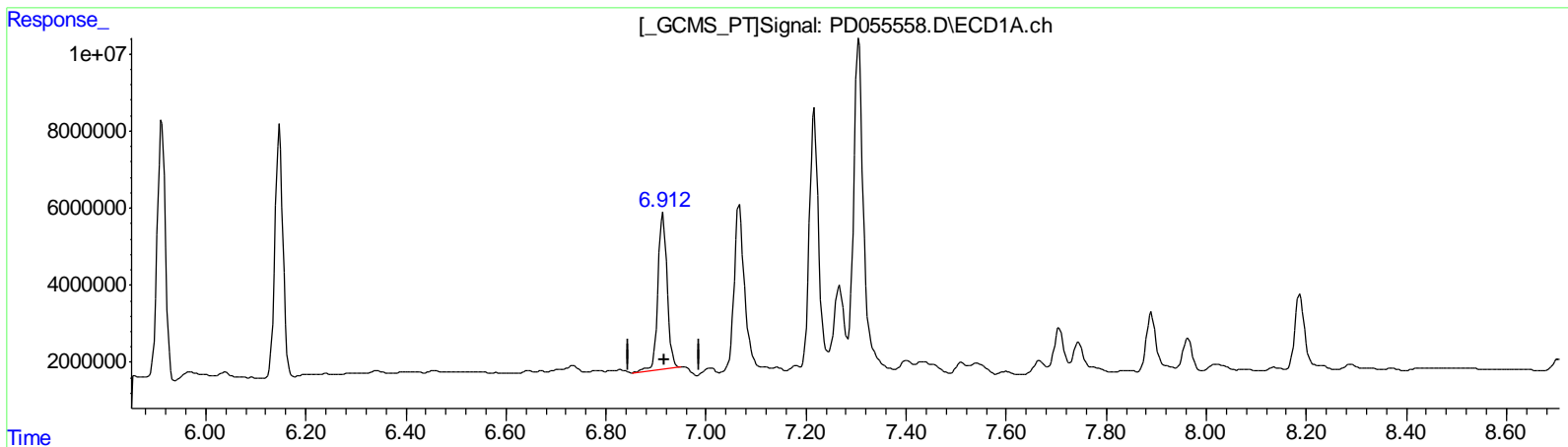
Data Path : Z:\pestpcbsrv\HPCHEM1\ECD\_D\Data\PD102319\  
 Data File : PD055558.D  
 Signal(s) : Signal #1: ECD1A.ch Signal #2: ECD2B.ch  
 Acq On : 23 Oct 2019 17:44  
 Operator : SG\AJ  
 Sample : K5482-06DL 2X  
 Misc :  
 ALS Vial : 21 Sample Multiplier: 1

**Instrument :**  
 ECD\_D  
**ClientSampled :**  
 C0AZ7DL

**Manual Integrations**  
**APPROVED**  
 Ankita  
 10/24/2019 12:57:54 PM

Integration File signal 1: autoint1.e  
 Integration File signal 2: autoint2.e  
 Quant Time: Oct 24 04:24:17 2019  
 Quant Method : Z:\pestpcbsrv\HPCHEM1\ECD\_D\Method\PD101819CLP.M  
 Quant Title : GC Extractables  
 QLast Update : Sat Oct 19 00:42:03 2019  
 Response via : Initial Calibration  
 Integrator: ChemStation

Volume Inj. : 1 µl  
 Signal #1 Phase : ZB-MR2 Signal #2 Phase: ZB-MR1  
 Signal #1 Info : 30M x 0.32mm x0.2 Signal #2 Info : 30M x 0.32mm x 0.50µm



QEdit

(21) Endrin ketone (B)

6.914min 53.212 ng/ml

response 52008505

(21) Endrin ketone #2 (B)

7.679min 62.341 ng/ml m

response 99846106

(+) = Expected Retention Time



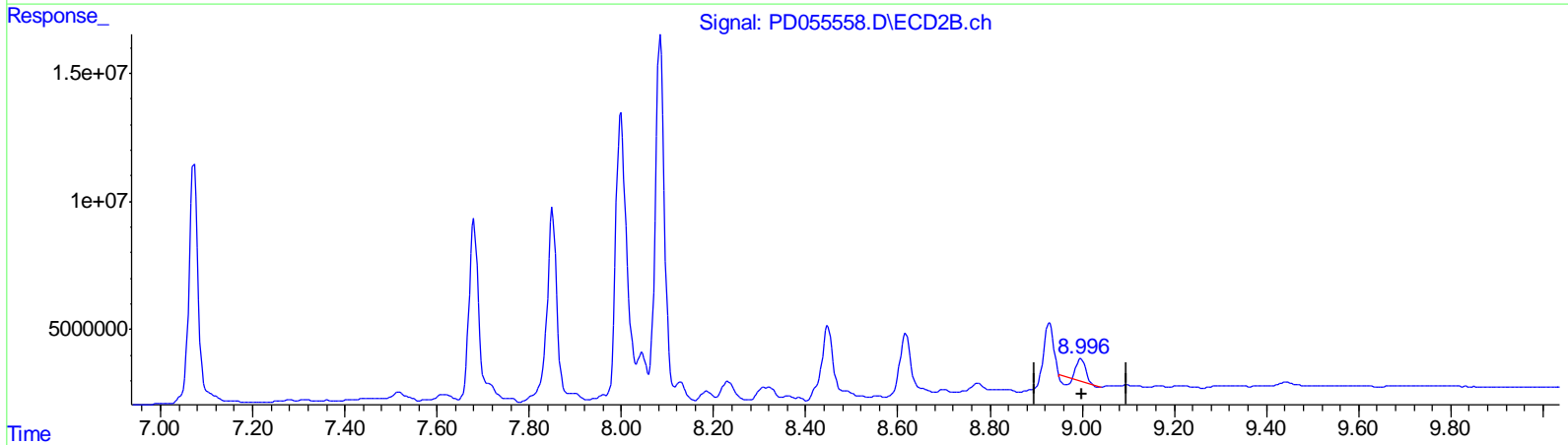
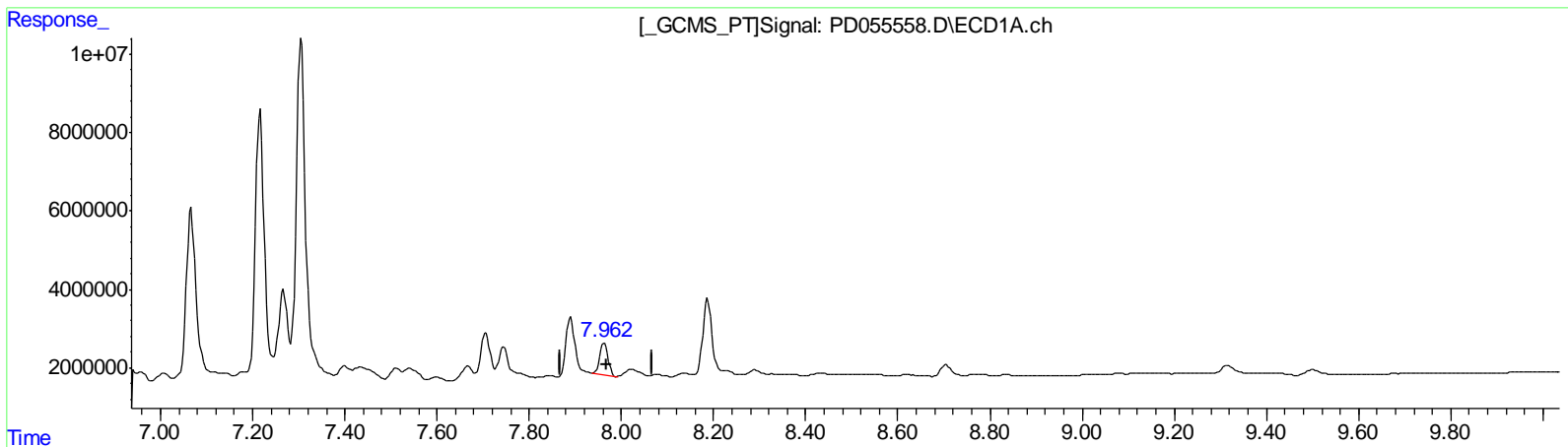
Data Path : Z:\pestpcbsrv\HPCHEM1\ECD\_D\Data\PD102319\  
 Data File : PD055558.D  
 Signal(s) : Signal #1: ECD1A.ch Signal #2: ECD2B.ch  
 Acq On : 23 Oct 2019 17:44  
 Operator : SG\AJ  
 Sample : K5482-06DL 2X  
 Misc :  
 ALS Vial : 21 Sample Multiplier: 1

**Instrument :**  
 ECD\_D  
**Client Sampled :**  
 C0AZ7DL

**Manual Integrations**  
**APPROVED**  
 Ankita  
 10/24/2019 12:57:54 PM

Integration File signal 1: autoint1.e  
 Integration File signal 2: autoint2.e  
 Quant Time: Oct 24 04:24:17 2019  
 Quant Method : Z:\pestpcbsrv\HPCHEM1\ECD\_D\Method\PD101819CLP.M  
 Quant Title : GC Extractables  
 QLast Update : Sat Oct 19 00:42:03 2019  
 Response via : Initial Calibration  
 Integrator: ChemStation

Volume Inj. : 1 µl  
 Signal #1 Phase : ZB-MR2 Signal #2 Phase: ZB-MR1  
 Signal #1 Info : 30M x 0.32mm x0.2 Signal #2 Info : 30M x 0.32mm x 0.50µm



QEdit

(27) Decachlorobiphenyl (SA)  
 7.963min 10.877 ng/ml  
 response 9959642

(27) Decachlorobiphenyl #2 (SA)  
 8.997min 6.468 ng/ml  
 response 8439217

(+) = Expected Retention Time

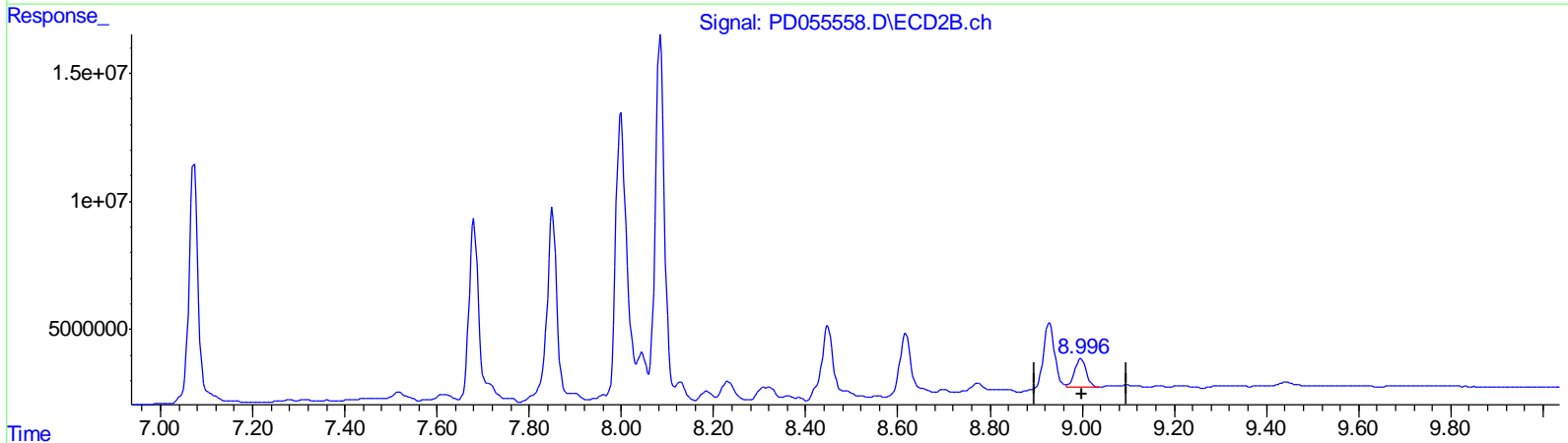
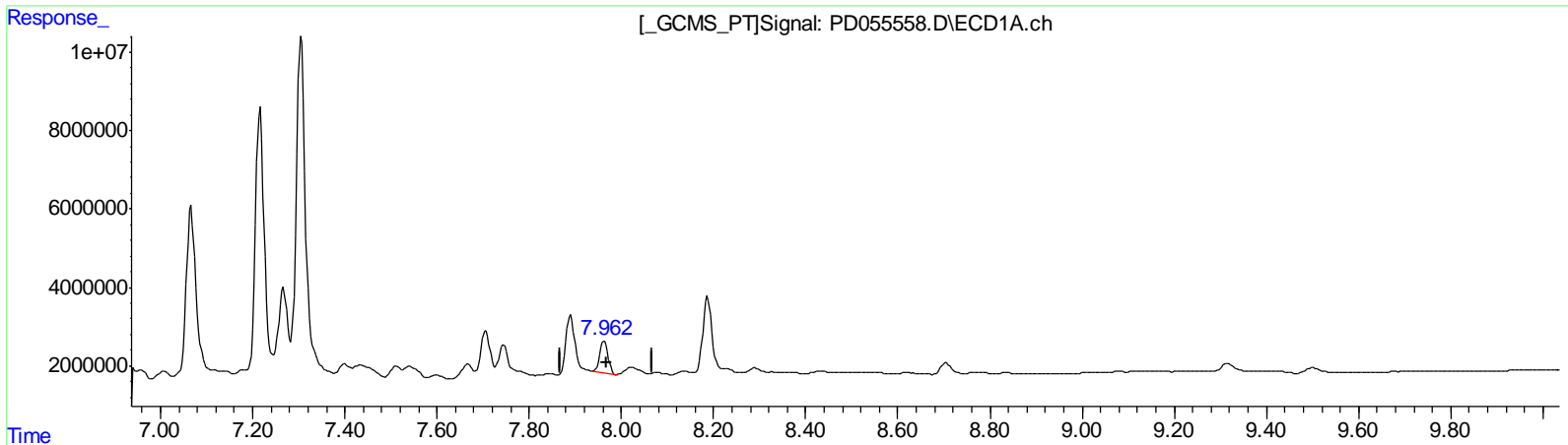
Data Path : Z:\pestpcbsrv\HPCHEM1\ECD\_D\Data\PD102319\  
 Data File : PD055558.D  
 Signal(s) : Signal #1: ECD1A.ch Signal #2: ECD2B.ch  
 Acq On : 23 Oct 2019 17:44  
 Operator : SG\AJ  
 Sample : K5482-06DL 2X  
 Misc :  
 ALS Vial : 21 Sample Multiplier: 1

**Instrument :**  
 ECD\_D  
**Client Sampled :**  
 C0AZ7DL

**Manual Integrations**  
**APPROVED**  
 Ankita  
 10/24/2019 12:57:54 PM

Integration File signal 1: autoint1.e  
 Integration File signal 2: autoint2.e  
 Quant Time: Oct 24 04:24:17 2019  
 Quant Method : Z:\pestpcbsrv\HPCHEM1\ECD\_D\Method\PD101819CLP.M  
 Quant Title : GC Extractables  
 QLast Update : Sat Oct 19 00:42:03 2019  
 Response via : Initial Calibration  
 Integrator: ChemStation

Volume Inj. : 1 µl  
 Signal #1 Phase : ZB-MR2 Signal #2 Phase: ZB-MR1  
 Signal #1 Info : 30M x 0.32mm x0.2 Signal #2 Info : 30M x 0.32mm x 0.50µm



QEdit

(27) Decachlorobiphenyl (SA)  
 7.963min 10.877 ng/ml  
 response 9959642

(27) Decachlorobiphenyl #2 (SA)  
 8.996min 14.906 ng/ml m  
 response 19449738

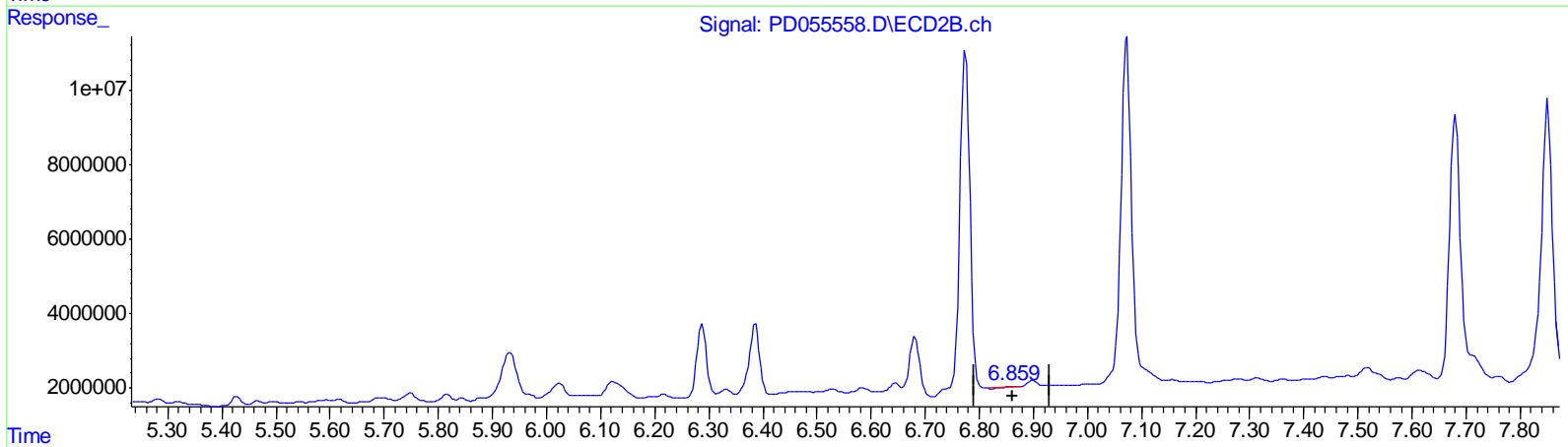
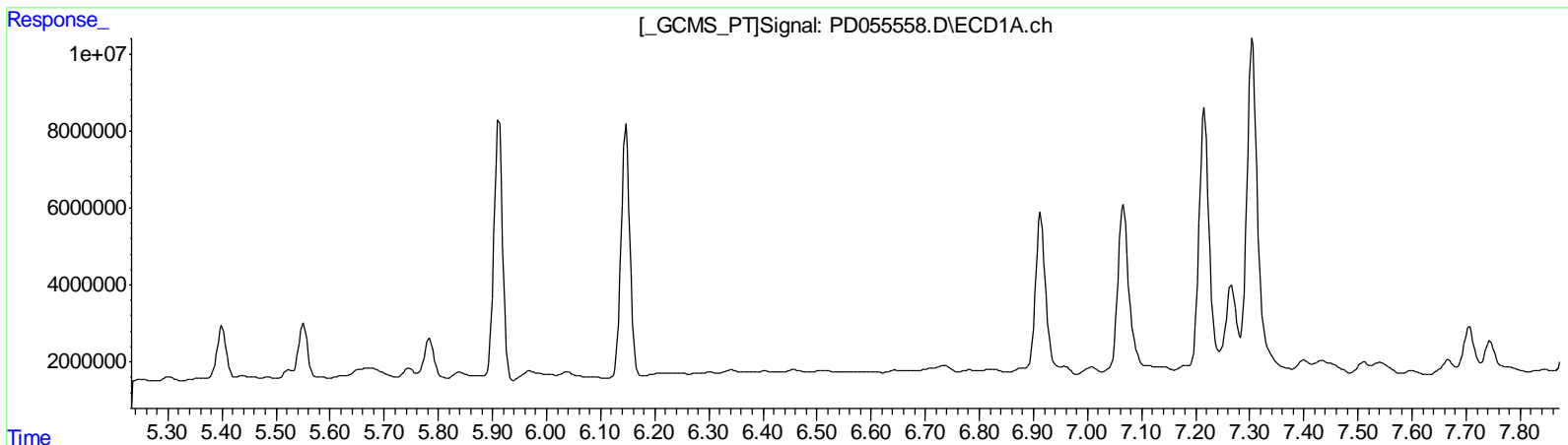
Data Path : Z:\pestpcbsrv\HPCHEM1\ECD\_D\Data\PD102319\  
 Data File : PD055558.D  
 Signal(s) : Signal #1: ECD1A.ch Signal #2: ECD2B.ch  
 Acq On : 23 Oct 2019 17:44  
 Operator : SG\AJ  
 Sample : K5482-06DL 2X  
 Misc :  
 ALS Vial : 21 Sample Multiplier: 1

**Instrument :**  
 ECD\_D  
**ClientSampled :**  
 C0AZ7DL

**Manual Integrations**  
**APPROVED**  
 Ankita  
 10/24/2019 12:57:54 PM

Integration File signal 1: autoint1.e  
 Integration File signal 2: autoint2.e  
 Quant Time: Oct 24 04:24:17 2019  
 Quant Method : Z:\pestpcbsrv\HPCHEM1\ECD\_D\Method\PD101819CLP.M  
 Quant Title : GC Extractables  
 QLast Update : Sat Oct 19 00:42:03 2019  
 Response via : Initial Calibration  
 Integrator: ChemStation

Volume Inj. : 1 µl  
 Signal #1 Phase : ZB-MR2 Signal #2 Phase: ZB-MR1  
 Signal #1 Info : 30M x 0.32mm x0.2 Signal #2 Info : 30M x 0.32mm x 0.50µm



QEdit

(15) Endosulfan II (B)  
 0.000min 0.000 ng/ml  
 response 0

(15) Endosulfan II #2 (B)  
 6.861min 0.000 ng/ml  
 response 133

(+) = Expected Retention Time

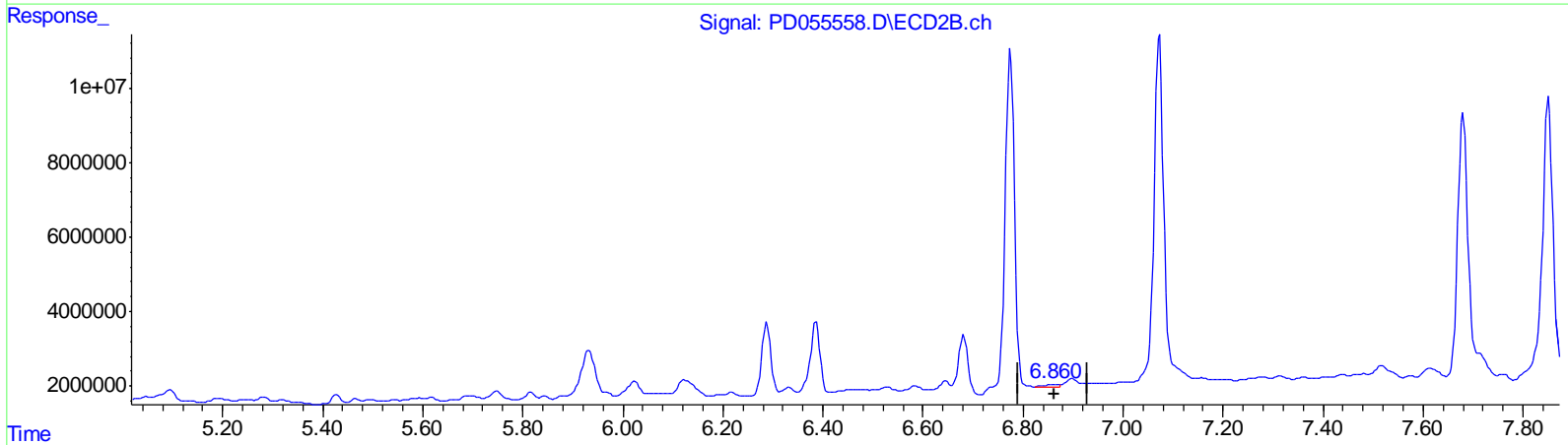
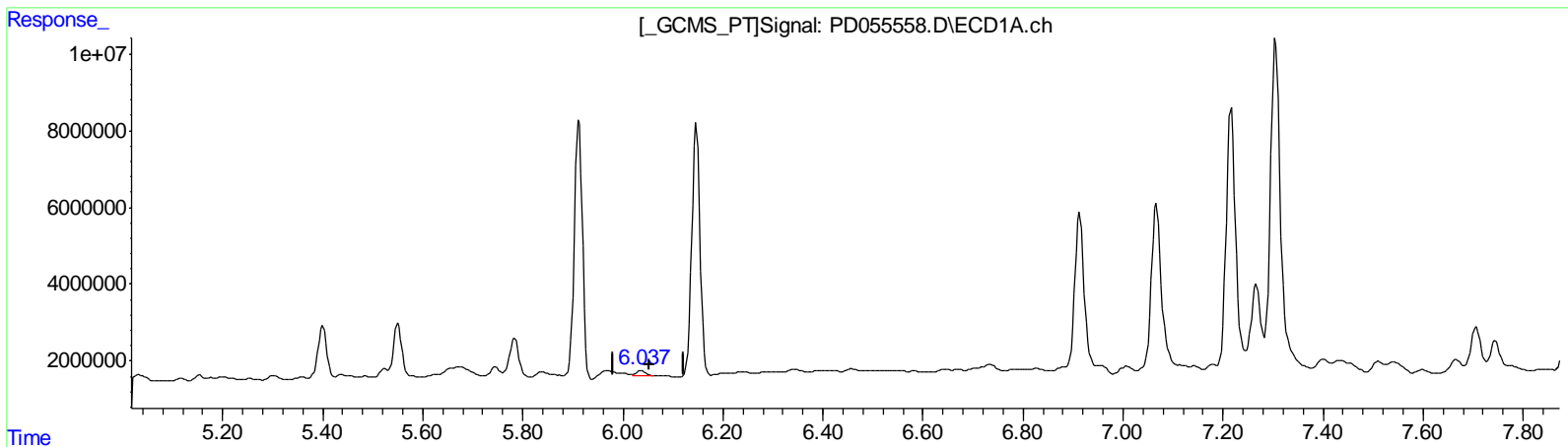
Data Path : Z:\pestpcbsrv\HPCHEM1\ECD\_D\Data\PD102319\  
 Data File : PD055558.D  
 Signal(s) : Signal #1: ECD1A.ch Signal #2: ECD2B.ch  
 Acq On : 23 Oct 2019 17:44  
 Operator : SG\AJ  
 Sample : K5482-06DL 2X  
 Misc :  
 ALS Vial : 21 Sample Multiplier: 1

**Instrument :**  
 ECD\_D  
**ClientSampled :**  
 C0AZ7DL

**Manual Integrations**  
**APPROVED**  
 Ankita  
 10/24/2019 12:57:54 PM

Integration File signal 1: autoint1.e  
 Integration File signal 2: autoint2.e  
 Quant Time: Oct 24 04:24:17 2019  
 Quant Method : Z:\pestpcbsrv\HPCHEM1\ECD\_D\Method\PD101819CLP.M  
 Quant Title : GC Extractables  
 QLast Update : Sat Oct 19 00:42:03 2019  
 Response via : Initial Calibration  
 Integrator: ChemStation

Volume Inj. : 1 µl  
 Signal #1 Phase : ZB-MR2 Signal #2 Phase: ZB-MR1  
 Signal #1 Info : 30M x 0.32mm x0.2 Signal #2 Info : 30M x 0.32mm x 0.50µm



QEdit

(15) Endosulfan II (B)  
 6.037min 1.542 ng/ml m  
 response 1476307

(15) Endosulfan II #2 (B)  
 6.860min 0.663 ng/ml m  
 response 1030664

(+) = Expected Retention Time

Data Path : Z:\pestpcbsrv\HPCHEM1\ECD\_D\Data\PD102319\  
 Data File : PD055558.D  
 Signal(s) : Signal #1: ECD1A.ch Signal #2: ECD2B.ch  
 Acq On : 23 Oct 2019 17:44  
 Operator : SG\AJ  
 Sample : K5482-06DL 2X  
 Misc :  
 ALS Vial : 21 Sample Multiplier: 1

Instrument :  
 ECD\_D  
 Client Sampled :  
 C0AZ7DL

Integration File signal 1: autoint1.e  
 Integration File signal 2: autoint2.e  
 Quant Time: Oct 24 04:24:17 2019  
 Quant Method : Z:\pestpcbsrv\HPCHEM1\ECD\_D\Method\PD101819CLP.M  
 Quant Title : GC Extractables  
 QLast Update : Sat Oct 19 00:42:03 2019  
 Response via : Initial Calibration  
 Integrator: ChemStation

Manual Integrations  
 APPROVED

Ankita  
 10/24/2019 12:57:54 PM

Volume Inj. : 1 µl  
 Signal #1 Phase : ZB-MR2 Signal #2 Phase: ZB-MR1  
 Signal #1 Info : 30M x 0.32mm x 0.2 Signal #2 Info : 30M x 0.32mm x 0.50µm

Compound	RT#1	RT#2	Resp#1	Resp#2	ng/ml	ng/ml
System Monitoring Compounds						
1) SA Tetrachlo...	3.290	3.961	5903507	8317625	6.621	6.178m
27) SA Decachlor...	7.963	8.996	9959642	19449738	10.877	14.906m#
Target Compounds						
12) B 4,4'-DDE	5.401	6.288	15612414	24536400	15.317	14.552
14) MA Endrin	5.783	6.680	12443744	21420464	13.893m	15.336m
15) B Endosulfa...	6.037	6.860	1476307	1030664	1.542m	0.663m#
16) A 4,4'-DDD	5.912	6.775	75433150	114.9E6	93.073	80.312
17) MA 4,4'-DDT	6.147	7.071	74655695	126.1E6	110.113	93.018m
21) B Endrin ke...	6.914	7.679	52008505	99846106	53.212	62.341m

A·J  
 10/25/19

(f)=RT Delta > 1/2 Window (#)=Amounts differ by > 25% (m)=manual int.