

Data Path : Z:\pestpcbsrv\HPCHEM1\ECD\_D\Data\PD102423\  
 Data File : PD079094.D  
 Signal(s) : Signal #1: ECD1A.ch Signal #2: ECD2B.ch  
 Acq On : 24 Oct 2023 13:30  
 Operator : AR\AJ  
 Sample : 04996-05  
 Misc :  
 ALS Vial : 13 Sample Multiplier: 1

Instrument :  
 ECD\_D  
 ClientSampleId :

Integration File signal 1: autoint1.e  
 Integration File signal 2: autoint2.e  
 Quant Time: Oct 24 22:20:01 2023  
 Quant Method : Z:\pestpcbsrv\HPCHEM1\ECD\_D\Method\PD101723CLP.M  
 Quant Title : GC Extractables  
 QLast Update : Tue Oct 17 09:38:01 2023  
 Response via : Initial Calibration  
 Integrator: ChemStation

Volume Inj. : 1 µl  
 Signal #1 Phase : ZB-MR1 Signal #2 Phase: ZB-MR2  
 Signal #1 Info : 30M x 0.32mm x0.5 Signal #2 Info : 30M x 0.32mm x 0.25µm

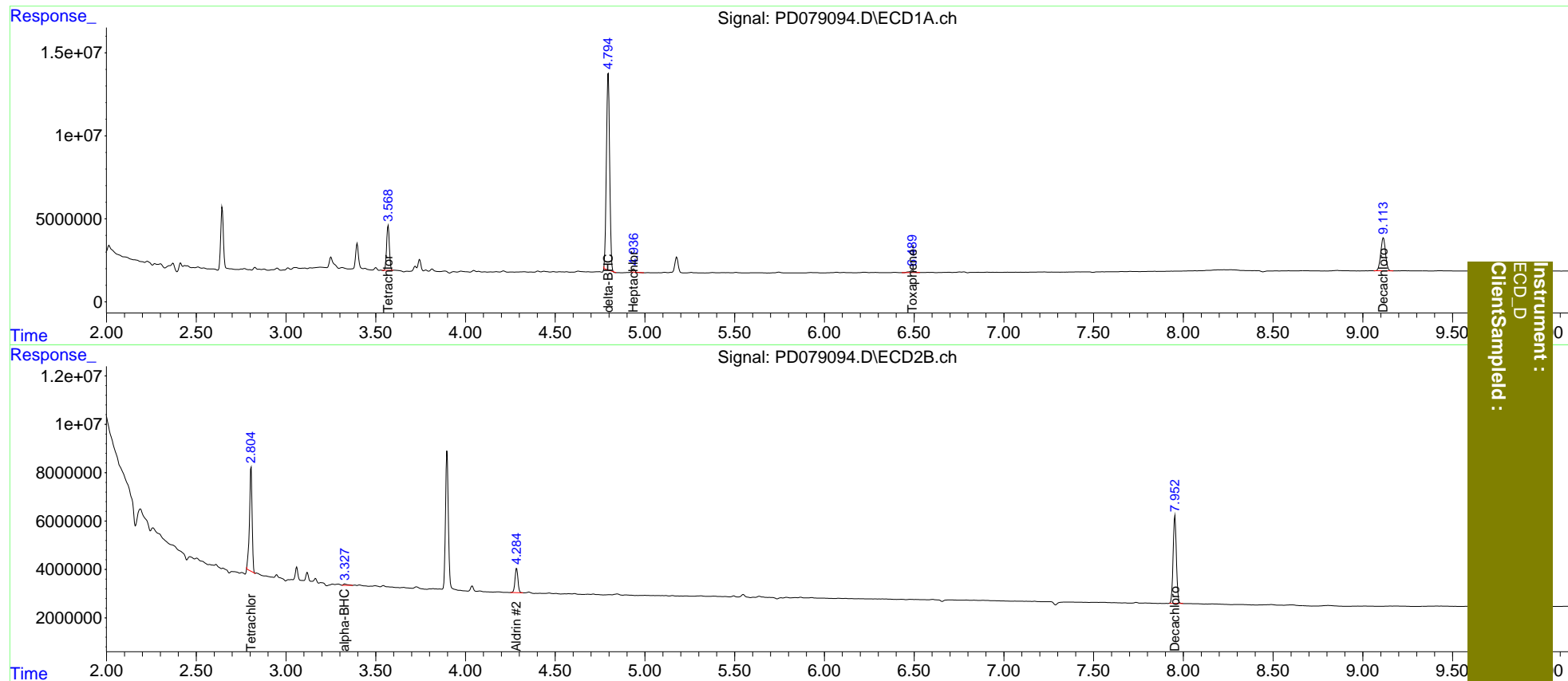
Compound	RT#1	RT#2	Resp#1	Resp#2	ng/ml	ng/ml
-----						
System Monitoring Compounds						
1) SA Tetrachlo...	3.570	2.806	28617973	44465361	18.660	20.505
27) SA Decachlor...	9.115	7.953	36497417	45739385	19.243	19.611
Target Compounds						
2) A alpha-BHC	0.000	3.328	0	870194	N.D.	0.255
4) MA Heptachlor	4.938	0.000	2054685	0	0.771	N.D. #
5) MB Aldrin	0.000	4.285	0	11497890	N.D.	3.732
7) B delta-BHC	4.796	0.000	150.2E6	0	57.261	N.D. #
8) B Heptachlo...	0.000	4.713f	0	135937	N.D.	<MDL
9) A Endosulfan I	0.000	5.154	0	178593	N.D.	<MDL
14) MA Endrin	0.000	5.637f	0	229115	N.D.	<MDL
15) B Endosulfa...	0.000	5.929f	0	78895	N.D.	<MDL
23) Toxaphene-2	6.490	0.000	2458766	0	123.183	N.D. #

(f)=RT Delta > 1/2 Window (#)=Amounts differ by > 25% (m)=manual int.

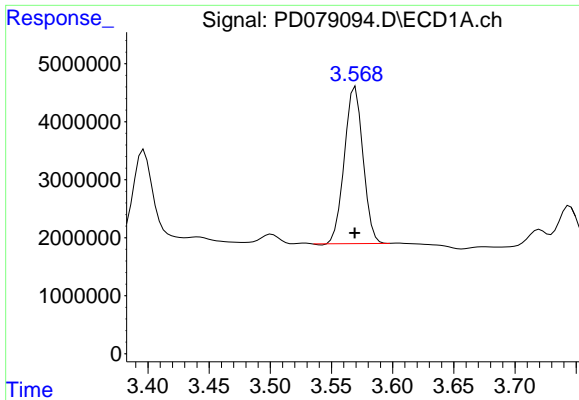
Data Path : Z:\pestpcbsrv\HPCHEM1\ECD\_D\Data\PD102423\  
 Data File : PD079094.D  
 Signal(s) : Signal #1: ECD1A.ch Signal #2: ECD2B.ch  
 Acq On : 24 Oct 2023 13:30  
 Operator : AR\AJ  
 Sample : 04996-05  
 Misc :  
 ALS Vial : 13 Sample Multiplier: 1

Integration File signal 1: autoint1.e  
 Integration File signal 2: autoint2.e  
 Quant Time: Oct 24 22:20:01 2023  
 Quant Method : Z:\pestpcbsrv\HPCHEM1\ECD\_D\Method\PD101723CLP.M  
 Quant Title : GC Extractables  
 QLast Update : Tue Oct 17 09:38:01 2023  
 Response via : Initial Calibration  
 Integrator: ChemStation

Volume Inj. : 1 µl  
 Signal #1 Phase : ZB-MR1 Signal #2 Phase: ZB-MR2  
 Signal #1 Info : 30M x 0.32mm x0.5 Signal #2 Info : 30M x 0.32mm x 0.25µm

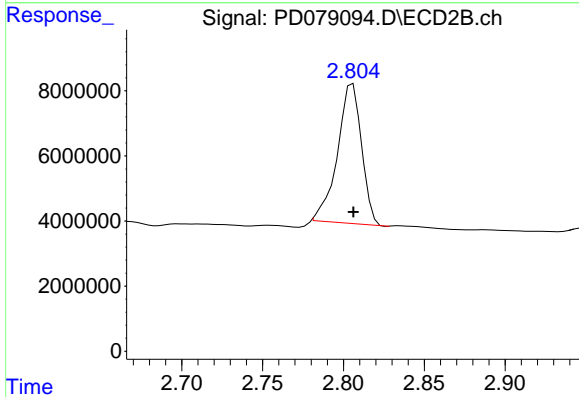


Instrument : ECD\_D  
 ClientSampled :

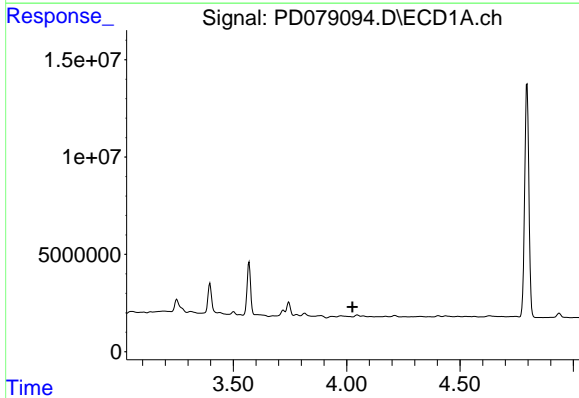


#1 Tetrachloro-m-xylene  
 R.T.: 3.570 min  
 Delta R.T.: 0.000 min  
 Response: 28617973  
 Conc: 18.66 ng/ml

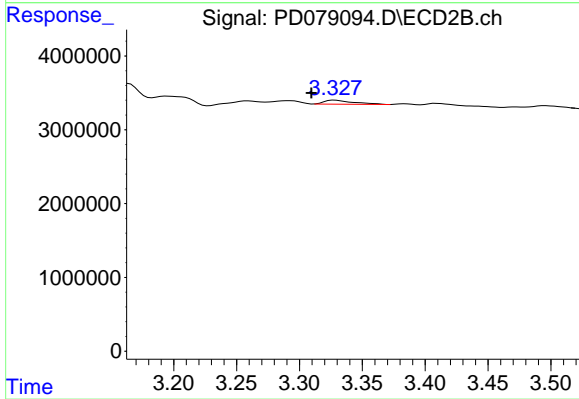
Instrument :  
 ECD\_D  
 ClientSampleId :



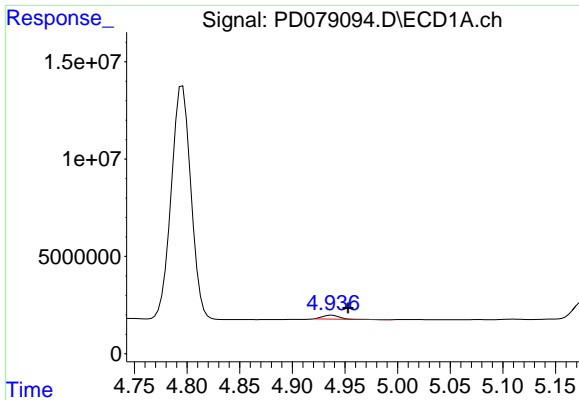
#1 Tetrachloro-m-xylene  
 R.T.: 2.806 min  
 Delta R.T.: 0.000 min  
 Response: 44465361  
 Conc: 20.50 ng/ml



#2 alpha-BHC  
 R.T.: 0.000 min  
 Exp R.T. : 4.026 min  
 Response: 0  
 Conc: N.D.



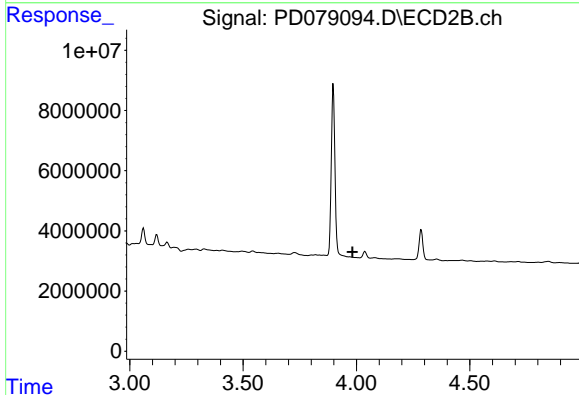
#2 alpha-BHC  
 R.T.: 3.328 min  
 Delta R.T.: 0.019 min  
 Response: 870194  
 Conc: 0.26 ng/ml



#4 Heptachlor

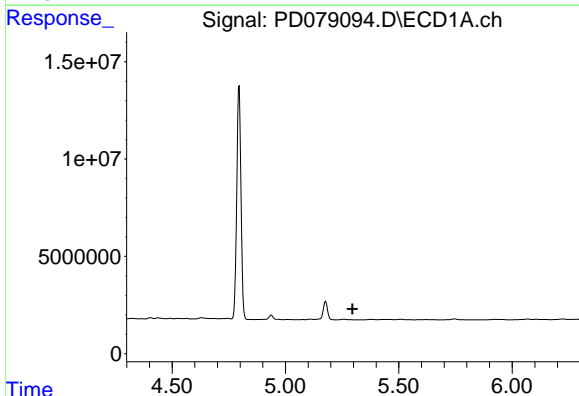
R.T.: 4.938 min  
 Delta R.T.: -0.015 min  
 Response: 2054685  
 Conc: 0.77 ng/ml

Instrument :  
 ECD\_D  
 ClientSampleId :



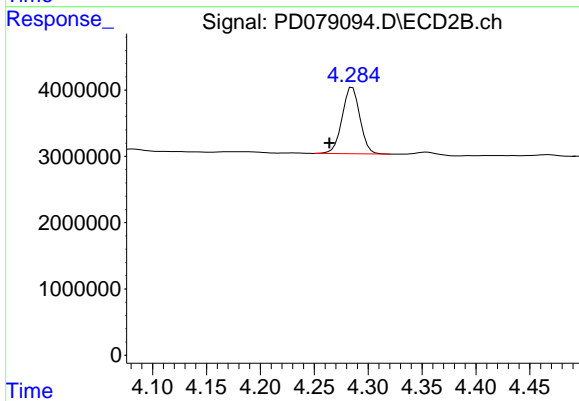
#4 Heptachlor

R.T.: 0.000 min  
 Exp R.T. : 3.983 min  
 Response: 0  
 Conc: N.D.



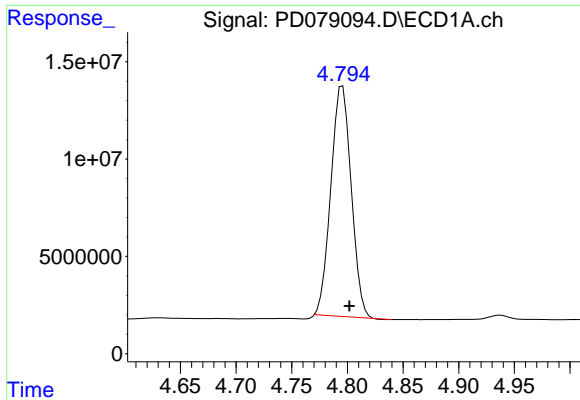
#5 Aldrin

R.T.: 0.000 min  
 Exp R.T. : 5.296 min  
 Response: 0  
 Conc: N.D.



#5 Aldrin

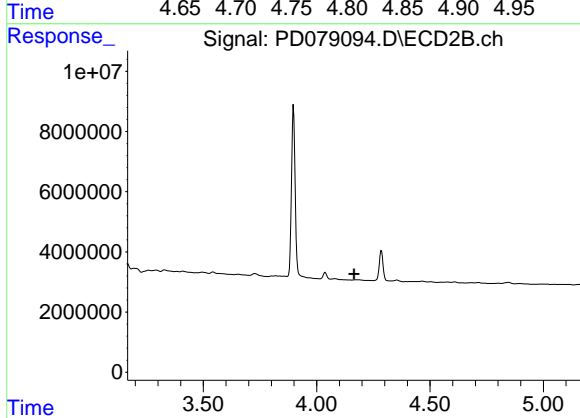
R.T.: 4.285 min  
 Delta R.T.: 0.021 min  
 Response: 11497890  
 Conc: 3.73 ng/ml



#7 delta-BHC

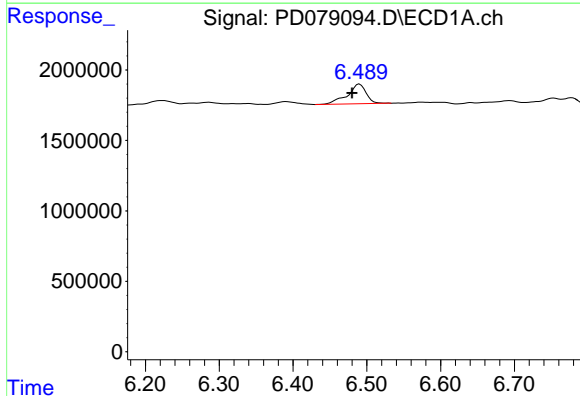
R.T.: 4.796 min  
 Delta R.T.: -0.006 min  
 Response: 150231117  
 Conc: 57.26 ng/ml

Instrument :  
 ECD\_D  
 ClientSampleId :



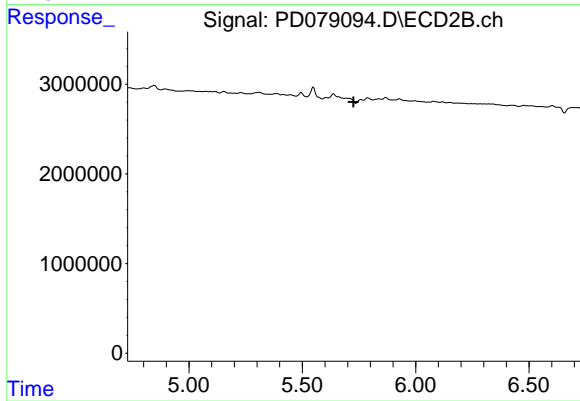
#7 delta-BHC

R.T.: 0.000 min  
 Exp R.T. : 4.166 min  
 Response: 0  
 Conc: N.D.



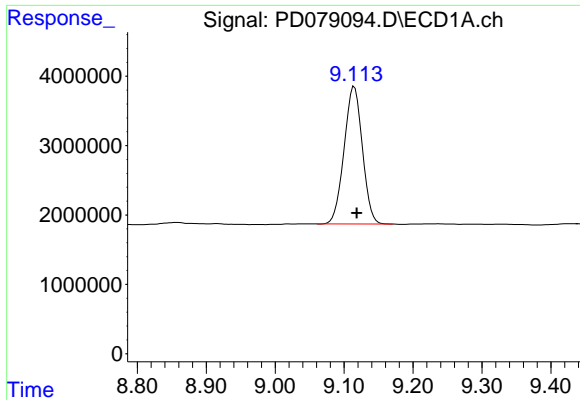
#23 Toxaphene-2

R.T.: 6.490 min  
 Delta R.T.: 0.010 min  
 Response: 2458766  
 Conc: 123.18 ng/ml



#23 Toxaphene-2

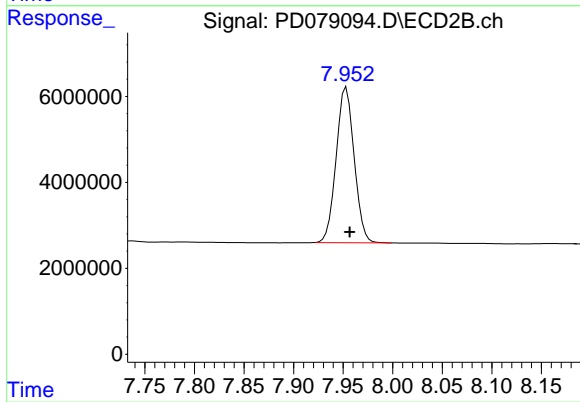
R.T.: 0.000 min  
 Exp R.T. : 5.726 min  
 Response: 0  
 Conc: N.D.



#27 Decachlorobiphenyl

R.T.: 9.115 min  
Delta R.T.: -0.003 min  
Response: 36497417  
Conc: 19.24 ng/ml

Instrument :  
ECD\_D  
ClientSampleId :



#27 Decachlorobiphenyl

R.T.: 7.953 min  
Delta R.T.: -0.003 min  
Response: 45739385  
Conc: 19.61 ng/ml