

Data Path : Z:\pestpcbsrv\HPCHEM1\ECD_D\Data\PD102521\
 Data File : PD066527.D
 Signal(s) : Signal #1: ECD1A.ch Signal #2: ECD2B.ch
 Acq On : 25 Oct 2021 10:54
 Operator : AJ\MA
 Sample : PEM128
 Misc :
 ALS Vial : 3 Sample Multiplier: 1

Instrument :
 ECD_D
 ClientSampled :
 PEM124

Manual Integrations
 APPROVED

mohammad
 10/26/2021 10:33:50 AM

Integration File signal 1: autoint1.e
 Integration File signal 2: autoint2.e
 Quant Time: Oct 26 01:47:58 2021
 Quant Method : Z:\pestpcbsrv\HPCHEM1\ECD_D\Method\PD101621CLP.M
 Quant Title : GC Extractables
 QLast Update : Tue Oct 19 10:18:55 2021
 Response via : Initial Calibration
 Integrator: ChemStation

Volume Inj. : 1 µl
 Signal #1 Phase : ZB-MR2 Signal #2 Phase: ZB-MR1
 Signal #1 Info : 30M x 0.32mm x0.2 Signal #2 Info : 30M x 0.32mm x 0.50µm

	Compound	RT#1	RT#2	Resp#1	Resp#2	ng/ml	ng/ml

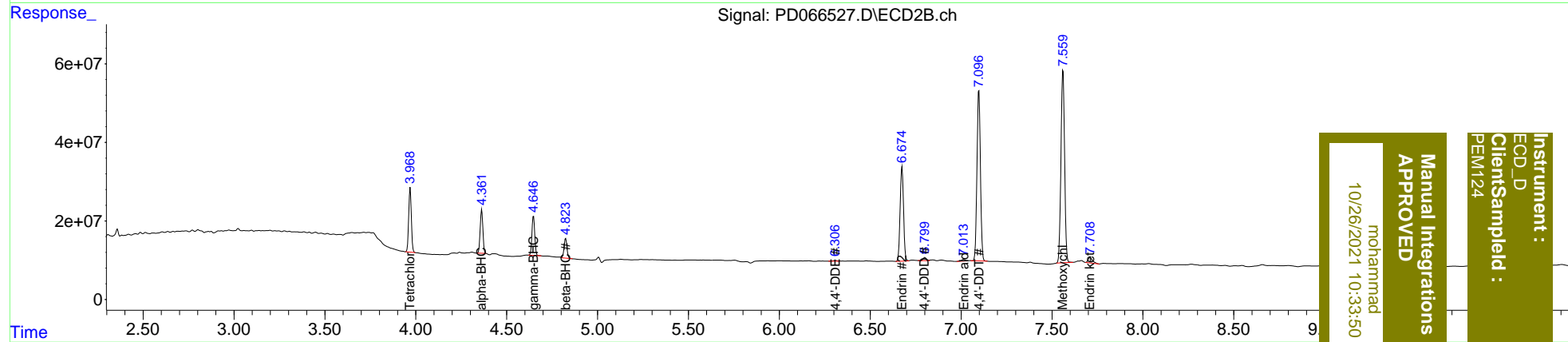
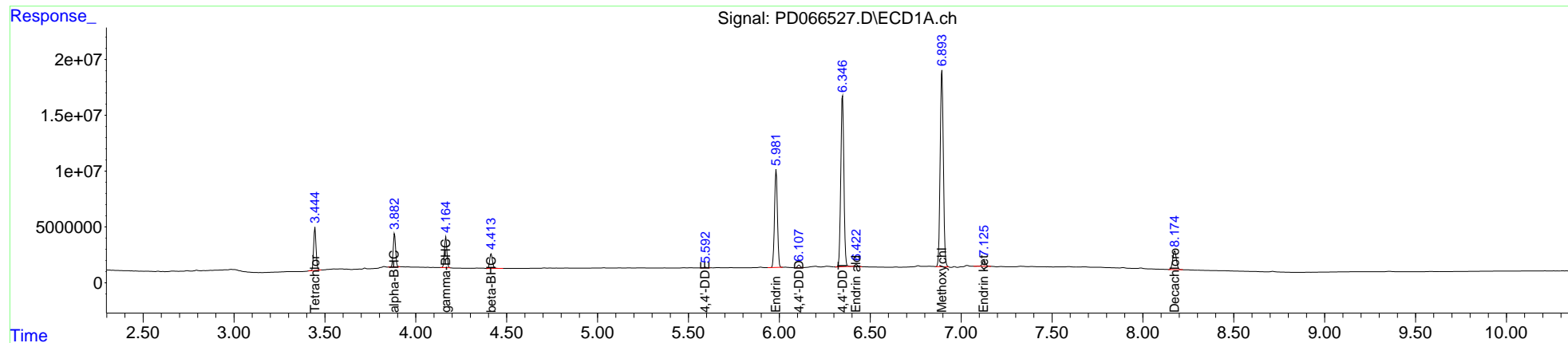
System Monitoring Compounds							
1)	SA Tetrachlo...	3.446	3.969	35869109	166.7E6	17.566	18.702
27)	SA Decachlor...	8.175	9.026	23438496	113.2E6	17.239	23.837 #
Target Compounds							
2)	A alpha-BHC	3.883	4.363	27304519	115.7E6	8.752	9.956
3)	MA gamma-BHC...	4.166	4.648	25794708	107.6E6	8.356	9.744
6)	B beta-BHC	4.415	4.825	14106331	55875112	10.594	10.732
12)	B 4,4'-DDE	5.592	6.307	651326	2552496	0.260m	0.321
14)	MA Endrin	5.983	6.675	97573079	312.7E6	41.043	59.082 #
16)	A 4,4'-DDD	6.108	6.801	2520130	9684228	1.214	1.451
17)	MA 4,4'-DDT	6.348	7.098	181.5E6	574.0E6	91.197	87.525
18)	B Endrin al...	6.424	7.014	2097089	5281026	1.339	0.996 #
20)	A Methoxychlor	6.895	7.561	215.7E6	687.7E6	208.013	211.750
21)	B Endrin ke...	7.126	7.708	6736998	23989881	2.917	3.345m

(f)=RT Delta > 1/2 Window (#)=Amounts differ by > 25% (m)=manual int.

Data Path : Z:\pestpcbsrv\HPCHEM1\ECD_D\Data\PD102521\
 Data File : PD066527.D
 Signal(s) : Signal #1: ECD1A.ch Signal #2: ECD2B.ch
 Acq On : 25 Oct 2021 10:54
 Operator : AJ\MA
 Sample : PEM128
 Misc :
 ALS Vial : 3 Sample Multiplier: 1

Integration File signal 1: autoint1.e
 Integration File signal 2: autoint2.e
 Quant Time: Oct 26 01:47:58 2021
 Quant Method : Z:\pestpcbsrv\HPCHEM1\ECD_D\Method\PD101621CLP.M
 Quant Title : GC Extractables
 QLast Update : Tue Oct 19 10:18:55 2021
 Response via : Initial Calibration
 Integrator: ChemStation

Volume Inj. : 1 µl
 Signal #1 Phase : ZB-MR2 Signal #2 Phase: ZB-MR1
 Signal #1 Info : 30M x 0.32mm x0.2 Signal #2 Info : 30M x 0.32mm x 0.50µm



Instrument : ECD_D
 Client Sample Id : PEM124
 Manual Integrations APPROVED
 mohammed
 10/26/2021 10:33:50 AM