

Data Path : Z:\pestpcbsrv\HPCHEM1\ECD_D\Data\PD102622\
 Data File : PD072619.D
 Signal(s) : Signal #1: ECD1A.ch Signal #2: ECD2B.ch
 Acq On : 26 Oct 2022 11:16
 Operator : AR\AJ
 Sample : TOXAPH101
 Misc :
 ALS Vial : 4 Sample Multiplier: 1

Instrument :
 ECD_D
 ClientSampleId :

Integration File signal 1: autoint1.e
 Integration File signal 2: autoint2.e
 Quant Time: Oct 26 15:13:47 2022
 Quant Method : Z:\pestpcbsrv\HPCHEM1\ECD_D\Method\PD102622CLP.M
 Quant Title : GC Extractables
 QLast Update : Wed Oct 26 15:12:42 2022
 Response via : Initial Calibration
 Integrator: ChemStation

Volume Inj. : 1 µl
 Signal #1 Phase : ZB-MR2 Signal #2 Phase: ZB-MR1
 Signal #1 Info : 30M x 0.32mm x0.2 Signal #2 Info : 30M x 0.32mm x 0.50µm

Compound	RT#1	RT#2	Resp#1	Resp#2	ng/ml	ng/ml

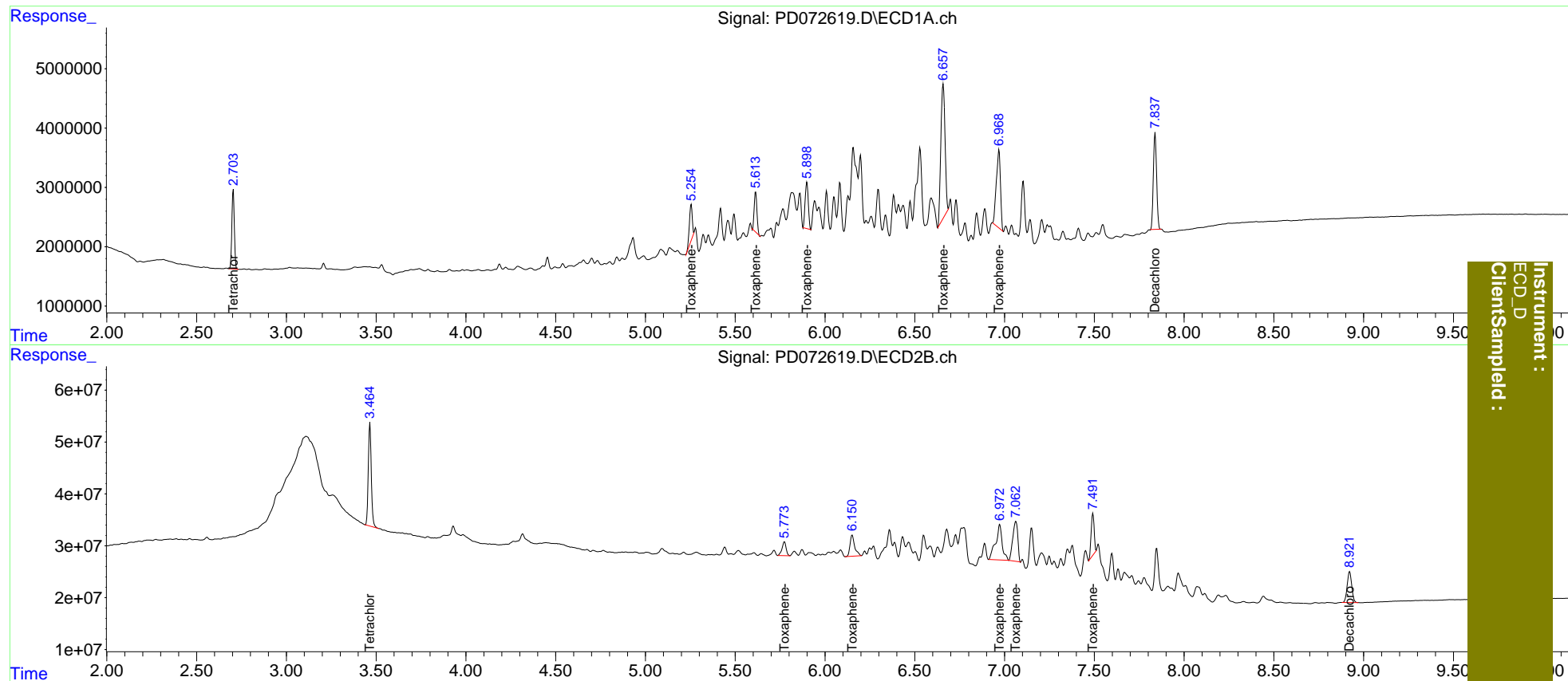
System Monitoring Compounds						
1) SA Tetrachlo...	2.705	3.465	12748552	230.5E6	5.589	5.855
27) SA Decachlor...	7.839	8.922	20460730	105.0E6	11.438	11.369
Target Compounds						
22) Toxaphene-1	5.255	5.774	7208374	42374303	561.263	621.186
23) Toxaphene-2	5.614	6.152	7210902	73719411	538.275	600.557
24) Toxaphene-3	5.899	6.973	9605237	174.7E6	533.262	568.428
25) Toxaphene-4	6.659	7.063	36703800	149.5E6	499.205	587.677
26) Toxaphene-5	6.969	7.492	20873096	92682187	502.203	602.444

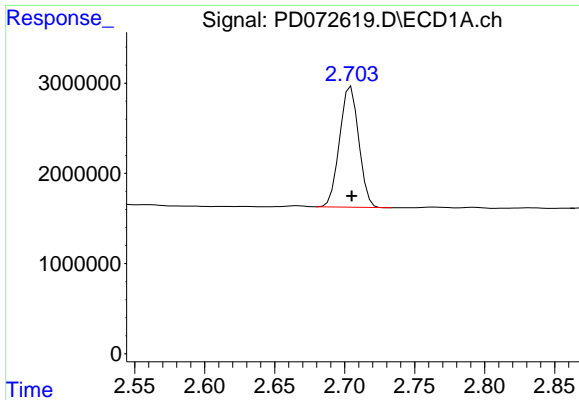
(f)=RT Delta > 1/2 Window (#)=Amounts differ by > 25% (m)=manual int.

Data Path : Z:\pestpcbsrv\HPCHEM1\ECD_D\Data\PD102622\
 Data File : PD072619.D
 Signal(s) : Signal #1: ECD1A.ch Signal #2: ECD2B.ch
 Acq On : 26 Oct 2022 11:16
 Operator : AR\AJ
 Sample : TOXAPH101
 Misc :
 ALS Vial : 4 Sample Multiplier: 1

Integration File signal 1: autoint1.e
 Integration File signal 2: autoint2.e
 Quant Time: Oct 26 15:13:47 2022
 Quant Method : Z:\pestpcbsrv\HPCHEM1\ECD_D\Method\PD102622CLP.M
 Quant Title : GC Extractables
 QLast Update : Wed Oct 26 15:12:42 2022
 Response via : Initial Calibration
 Integrator: ChemStation

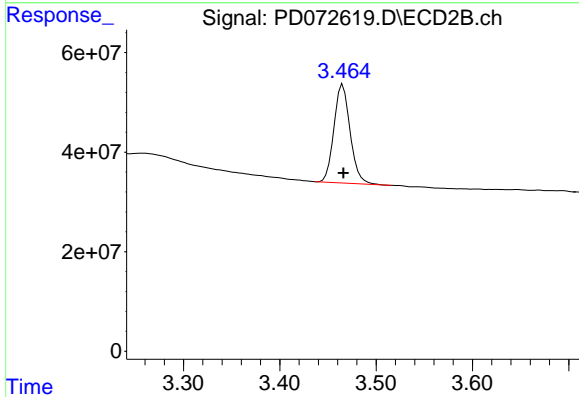
Volume Inj. : 1 µl
 Signal #1 Phase : ZB-MR2 Signal #2 Phase: ZB-MR1
 Signal #1 Info : 30M x 0.32mm x0.2 Signal #2 Info : 30M x 0.32mm x 0.50µm



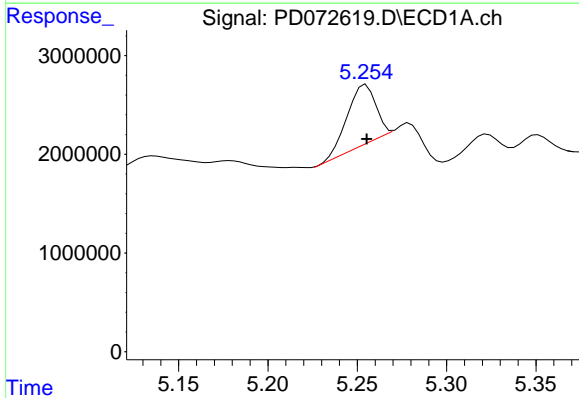


#1 Tetrachloro-m-xylene
 R.T.: 2.705 min
 Delta R.T.: 0.000 min
 Response: 12748552
 Conc: 5.59 ng/ml

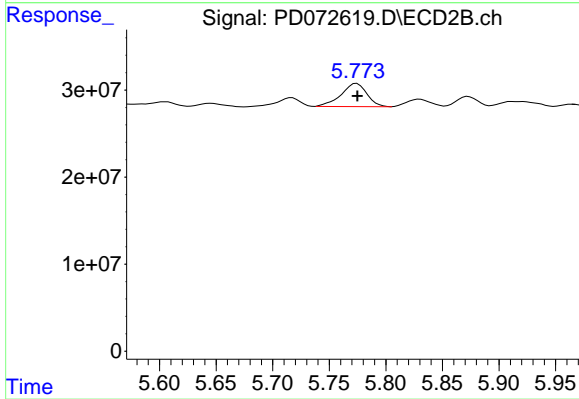
Instrument :
 ECD_D
 ClientSampleId :



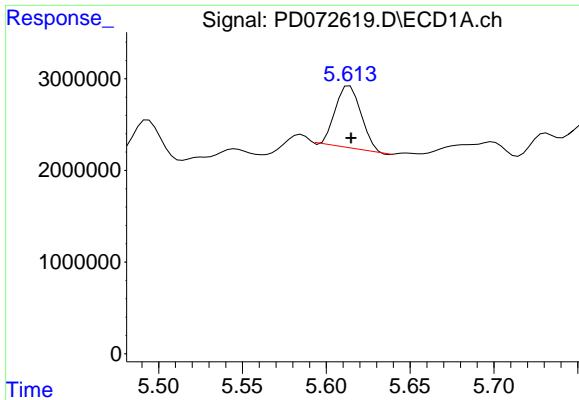
#1 Tetrachloro-m-xylene
 R.T.: 3.465 min
 Delta R.T.: 0.000 min
 Response: 230454096
 Conc: 5.85 ng/ml



#22 Toxaphene-1
 R.T.: 5.255 min
 Delta R.T.: 0.000 min
 Response: 7208374
 Conc: 561.26 ng/ml



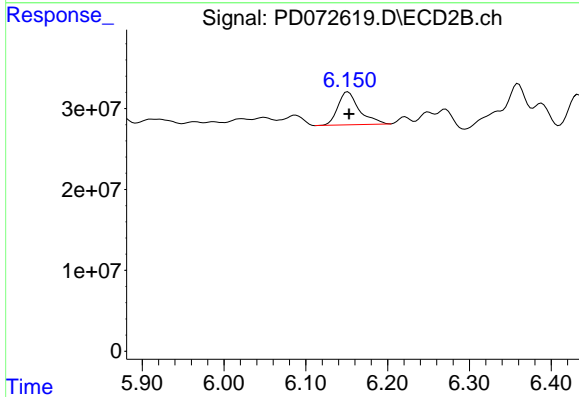
#22 Toxaphene-1
 R.T.: 5.774 min
 Delta R.T.: 0.000 min
 Response: 42374303
 Conc: 621.19 ng/ml



#23 Toxaphene-2

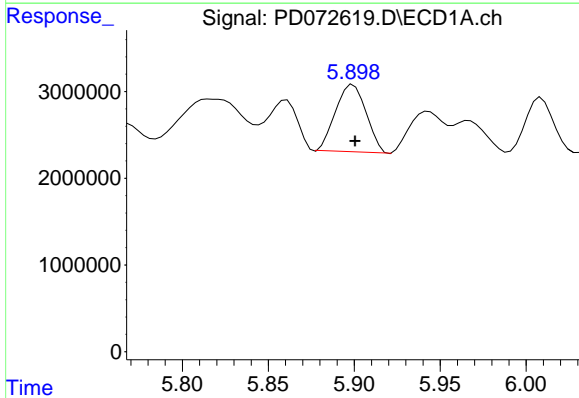
R.T.: 5.614 min
 Delta R.T.: 0.000 min
 Response: 7210902
 Conc: 538.27 ng/ml

Instrument :
 ECD_D
 ClientSampleId :



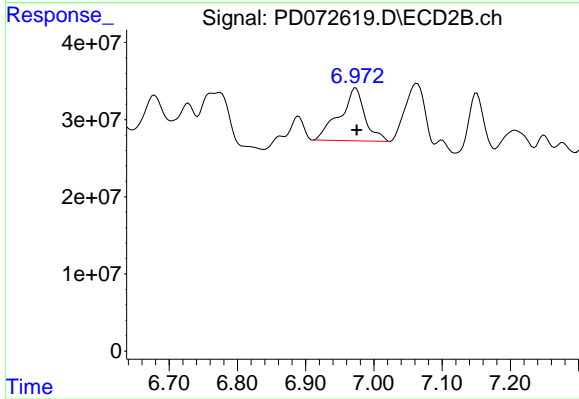
#23 Toxaphene-2

R.T.: 6.152 min
 Delta R.T.: -0.001 min
 Response: 73719411
 Conc: 600.56 ng/ml



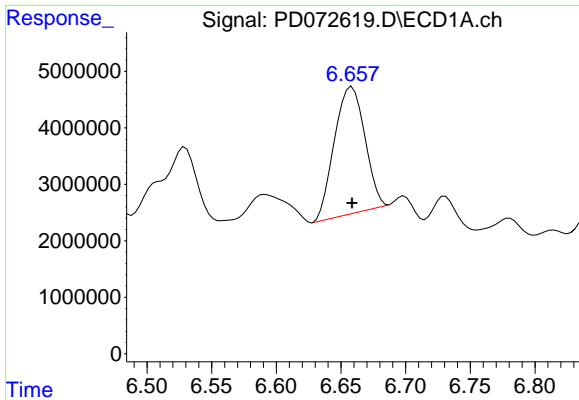
#24 Toxaphene-3

R.T.: 5.899 min
 Delta R.T.: 0.000 min
 Response: 9605237
 Conc: 533.26 ng/ml



#24 Toxaphene-3

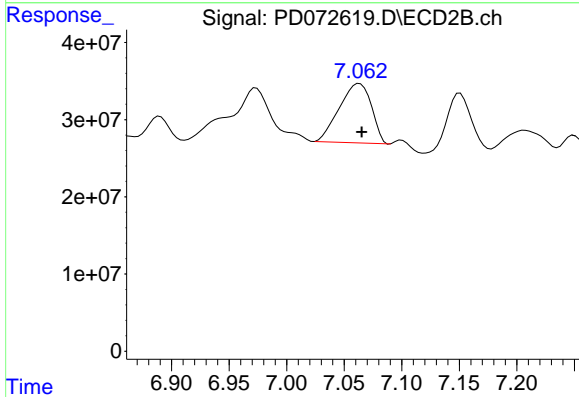
R.T.: 6.973 min
 Delta R.T.: -0.002 min
 Response: 174730055
 Conc: 568.43 ng/ml



#25 Toxaphene-4

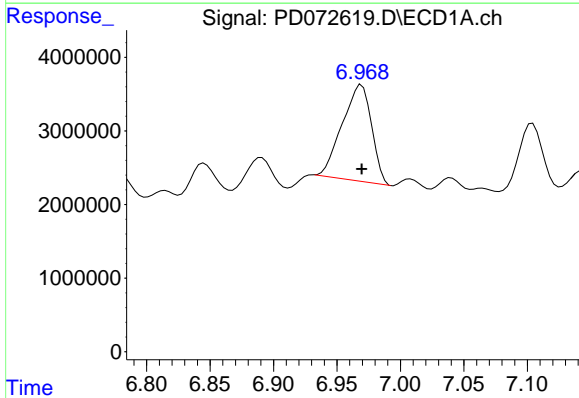
R.T.: 6.659 min
 Delta R.T.: 0.000 min
 Response: 36703800
 Conc: 499.20 ng/ml

Instrument :
 ECD_D
 ClientSampleId :



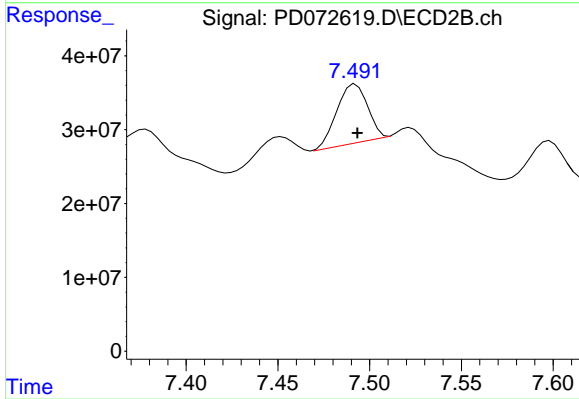
#25 Toxaphene-4

R.T.: 7.063 min
 Delta R.T.: -0.002 min
 Response: 149517450
 Conc: 587.68 ng/ml



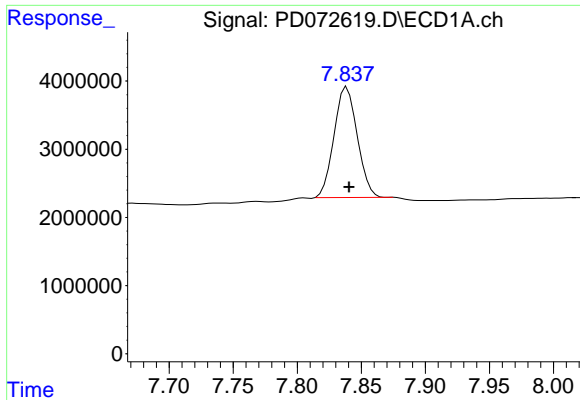
#26 Toxaphene-5

R.T.: 6.969 min
 Delta R.T.: 0.000 min
 Response: 20873096
 Conc: 502.20 ng/ml



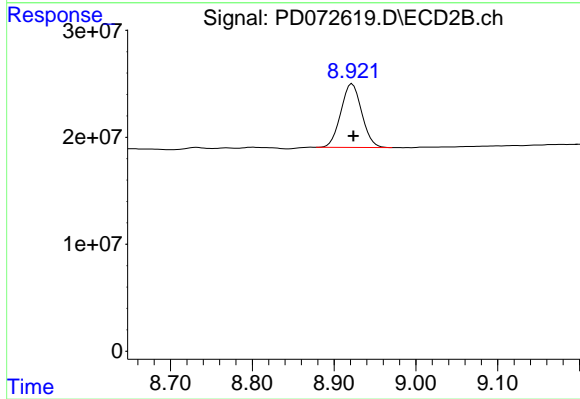
#26 Toxaphene-5

R.T.: 7.492 min
 Delta R.T.: 0.000 min
 Response: 92682187
 Conc: 602.44 ng/ml



#27 Decachlorobiphenyl
R.T.: 7.839 min
Delta R.T.: -0.001 min
Response: 20460730
Conc: 11.44 ng/ml

Instrument :
ECD_D
ClientSampleId :



#27 Decachlorobiphenyl
R.T.: 8.922 min
Delta R.T.: -0.001 min
Response: 105047878
Conc: 11.37 ng/ml