

Data Path : Z:\pestpcbsrv\HPCHEM1\ECD_D\Data\PD102622\
 Data File : PD072625.D
 Signal(s) : Signal #1: ECD1A.ch Signal #2: ECD2B.ch
 Acq On : 26 Oct 2022 12:36
 Operator : AR\AJ
 Sample : INDB101
 Misc :
 ALS Vial : 10 Sample Multiplier: 1

Instrument :
 ECD_D
 ClientSampleId :

Integration File signal 1: autoint1.e
 Integration File signal 2: autoint2.e
 Quant Time: Oct 26 16:34:03 2022
 Quant Method : Z:\pestpcbsrv\HPCHEM1\ECD_D\Method\PD102622CLP.M
 Quant Title : GC Extractables
 QLast Update : Wed Oct 26 16:32:51 2022
 Response via : Initial Calibration
 Integrator: ChemStation

Volume Inj. : 1 µl
 Signal #1 Phase : ZB-MR1 Signal #2 Phase: ZB-MR1
 Signal #1 Info : 30M x 0.32mm x0.2 Signal #2 Info : 30M x 0.32mm x 0.50µm

	Compound	RT#1	RT#2	Resp#1	Resp#2	ng/ml	ng/ml

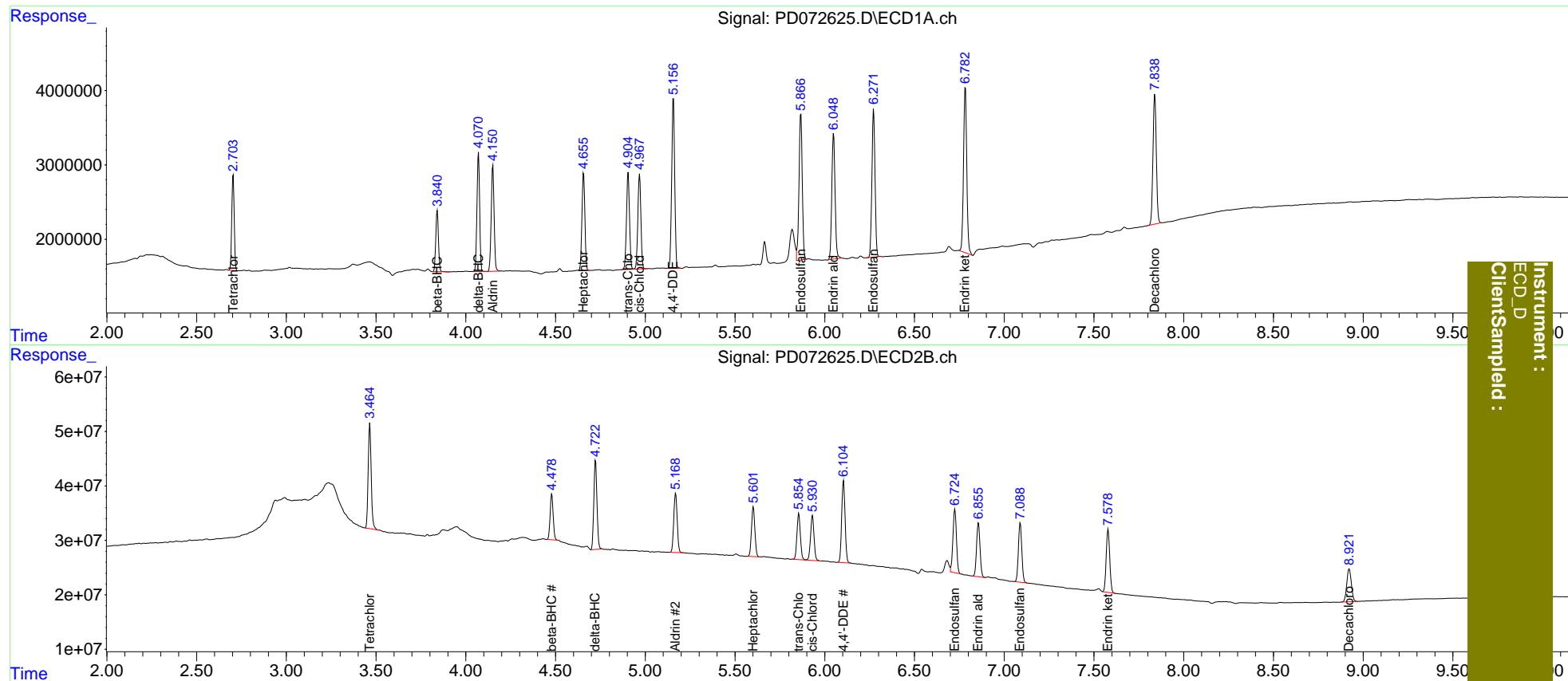
System Monitoring Compounds							
1)	SA Tetrachlo...	2.704	3.465	12247079	224.1E6	5.473	5.915
27)	SA Decachlor...	7.839	8.922	22495235	106.5E6	11.333	11.003
Target Compounds							
5)	MB Aldrin	4.151	5.170	15936166	144.1E6	5.179	5.854
6)	B beta-BHC	3.841	4.479	8445537	98682297	5.634	5.980
7)	B delta-BHC	4.071	4.723	16384720	198.3E6	5.042	5.984
8)	B Heptachlo...	4.657	5.602	14822468	118.9E6	5.391	5.874
10)	B trans-Chl...	4.905	5.856	15261495	112.7E6	5.379	5.741
11)	B cis-Chlor...	4.968	5.932	14944500	111.2E6	5.338	5.864
12)	B 4,4'-DDE	5.157	6.105	26673767	196.6E6	10.084	11.255
15)	B Endosulfa...	5.867	6.725	24800494	158.1E6	10.897	11.293
18)	B Endrin al...	6.050	6.857	21246375	132.9E6	11.127	11.311
19)	B Endosulfa...	6.273	7.090	23911700	143.5E6	10.743	11.073
21)	B Endrin ke...	6.784	7.579	27939769	158.2E6	10.650	11.183

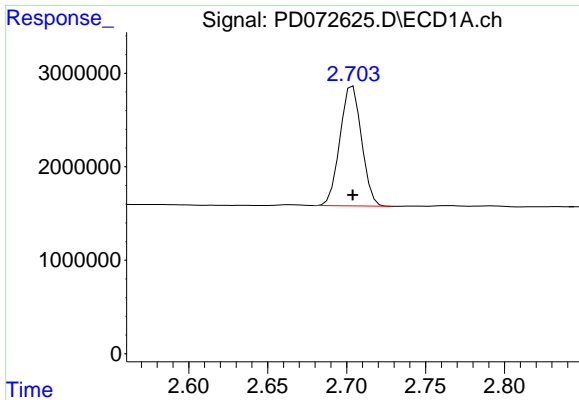
(f)=RT Delta > 1/2 Window (#)=Amounts differ by > 25% (m)=manual int.

Data Path : Z:\pestpcbsrv\HPCHEM1\ECD_D\Data\PD102622\
 Data File : PD072625.D
 Signal(s) : Signal #1: ECD1A.ch Signal #2: ECD2B.ch
 Acq On : 26 Oct 2022 12:36
 Operator : AR\AJ
 Sample : INDB101
 Misc :
 ALS Vial : 10 Sample Multiplier: 1

Integration File signal 1: autoint1.e
 Integration File signal 2: autoint2.e
 Quant Time: Oct 26 16:34:03 2022
 Quant Method : Z:\pestpcbsrv\HPCHEM1\ECD_D\Method\PD102622CLP.M
 Quant Title : GC Extractables
 QLast Update : Wed Oct 26 16:32:51 2022
 Response via : Initial Calibration
 Integrator: ChemStation

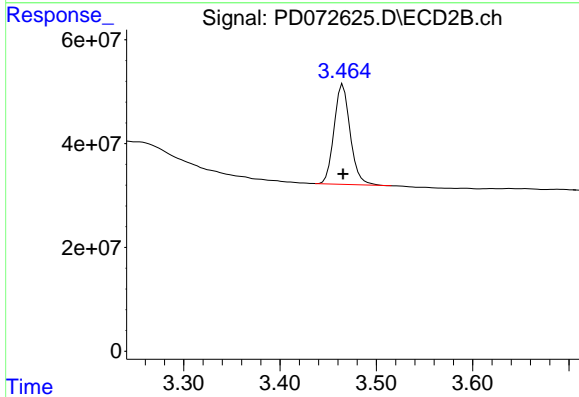
Volume Inj. : 1 µl
 Signal #1 Phase : ZB-MR2 Signal #2 Phase: ZB-MR1
 Signal #1 Info : 30M x 0.32mm x0.2 Signal #2 Info : 30M x 0.32mm x 0.50µm



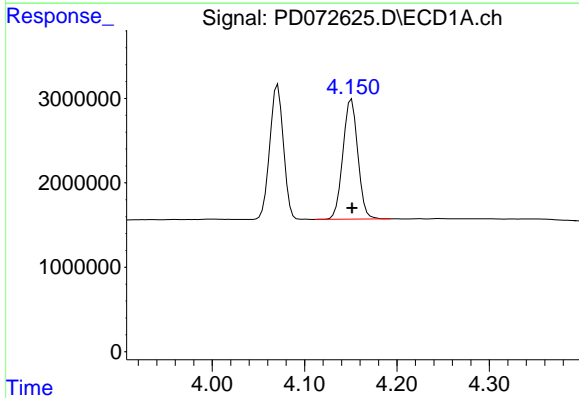


#1 Tetrachloro-m-xylene
 R.T.: 2.704 min
 Delta R.T.: 0.000 min
 Response: 12247079
 Conc: 5.47 ng/ml

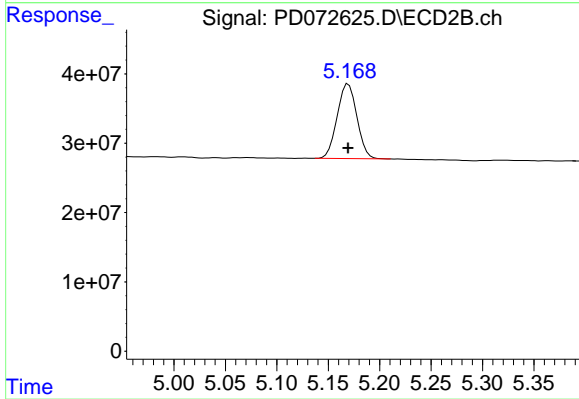
Instrument :
 ECD_D
 ClientSampleId :



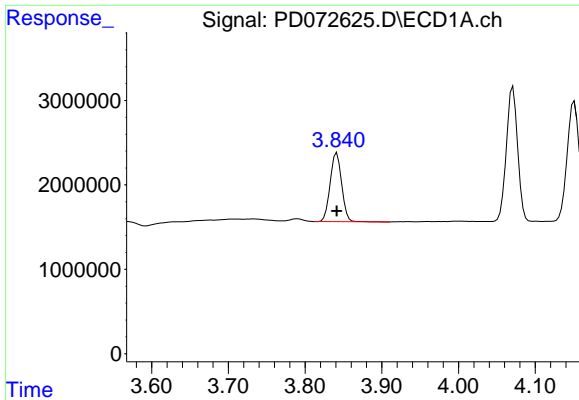
#1 Tetrachloro-m-xylene
 R.T.: 3.465 min
 Delta R.T.: 0.000 min
 Response: 224069744
 Conc: 5.92 ng/ml



#5 Aldrin
 R.T.: 4.151 min
 Delta R.T.: 0.000 min
 Response: 15936166
 Conc: 5.18 ng/ml



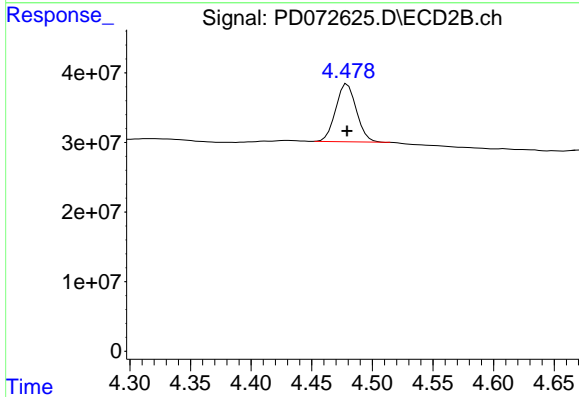
#5 Aldrin
 R.T.: 5.170 min
 Delta R.T.: 0.000 min
 Response: 144091985
 Conc: 5.85 ng/ml



#6 beta-BHC

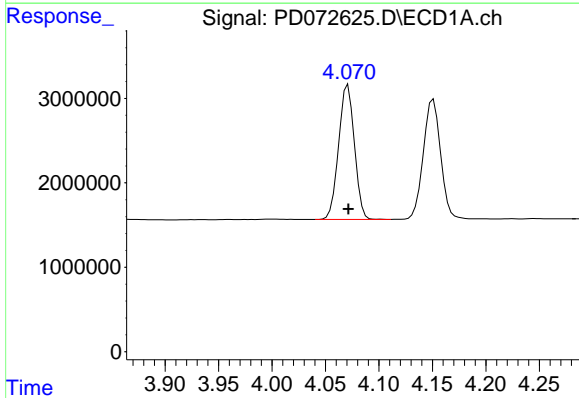
R.T.: 3.841 min
 Delta R.T.: 0.000 min
 Response: 8445537
 Conc: 5.63 ng/ml

Instrument :
 ECD_D
 ClientSampleId :



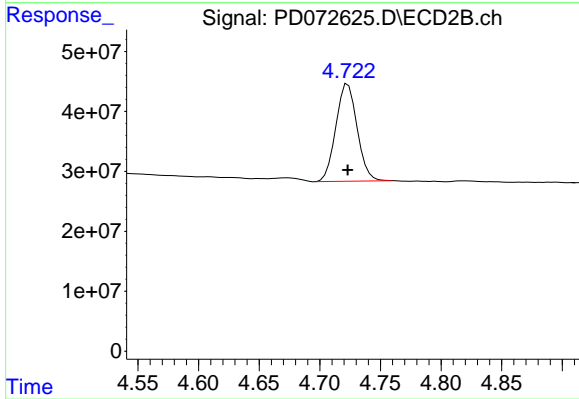
#6 beta-BHC

R.T.: 4.479 min
 Delta R.T.: 0.000 min
 Response: 98682297
 Conc: 5.98 ng/ml



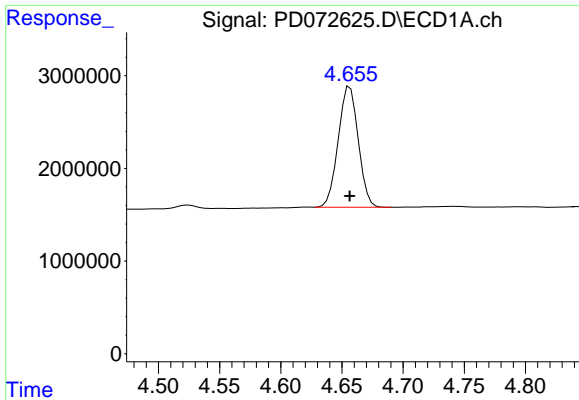
#7 delta-BHC

R.T.: 4.071 min
 Delta R.T.: 0.000 min
 Response: 16384720
 Conc: 5.04 ng/ml



#7 delta-BHC

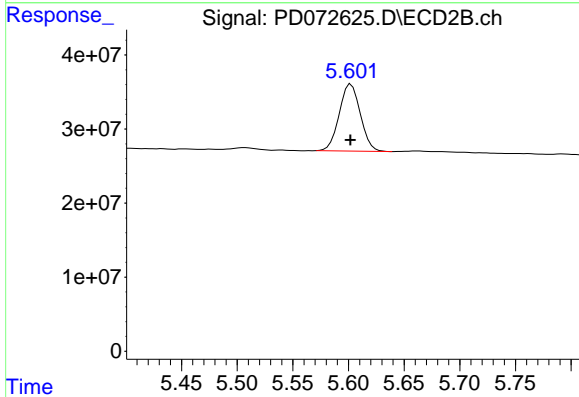
R.T.: 4.723 min
 Delta R.T.: 0.000 min
 Response: 198319271
 Conc: 5.98 ng/ml



#8 Heptachlor epoxide

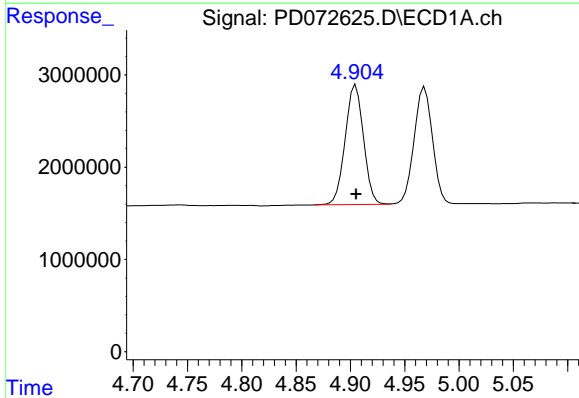
R.T.: 4.657 min
 Delta R.T.: 0.000 min
 Response: 14822468
 Conc: 5.39 ng/ml

Instrument :
 ECD_D
 ClientSampleId :



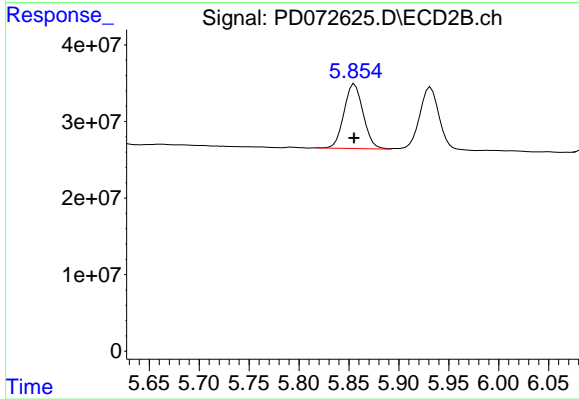
#8 Heptachlor epoxide

R.T.: 5.602 min
 Delta R.T.: 0.000 min
 Response: 118854512
 Conc: 5.87 ng/ml



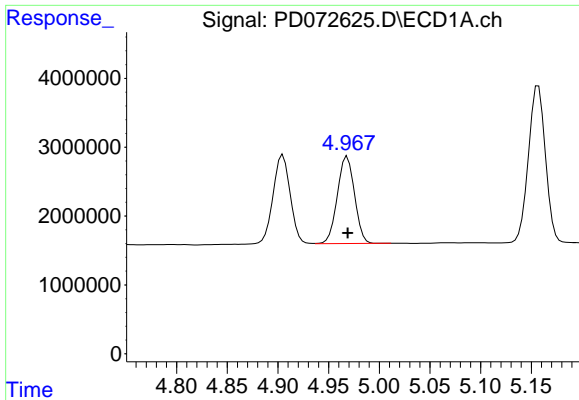
#10 trans-Chlordane

R.T.: 4.905 min
 Delta R.T.: 0.000 min
 Response: 15261495
 Conc: 5.38 ng/ml



#10 trans-Chlordane

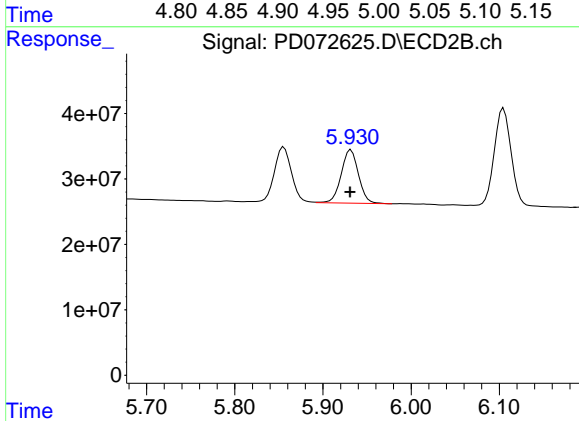
R.T.: 5.856 min
 Delta R.T.: 0.000 min
 Response: 112703575
 Conc: 5.74 ng/ml



#11 cis-Chlordane

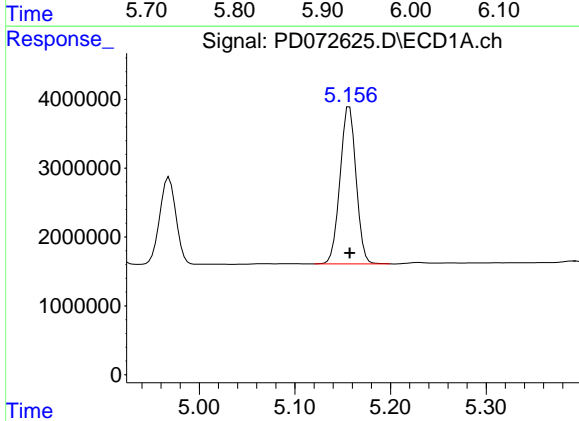
R.T.: 4.968 min
 Delta R.T.: 0.000 min
 Response: 14944500
 Conc: 5.34 ng/ml

Instrument :
 ECD_D
 ClientSampleId :



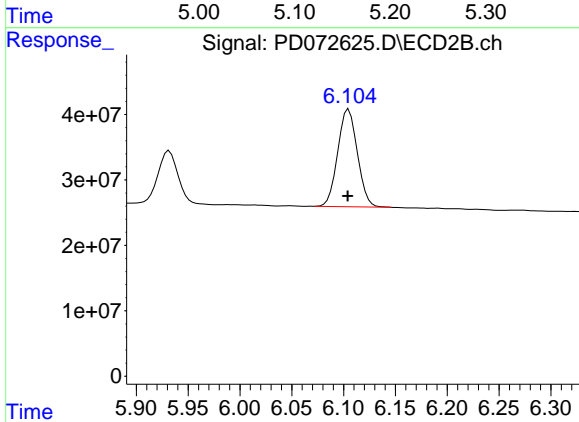
#11 cis-Chlordane

R.T.: 5.932 min
 Delta R.T.: 0.000 min
 Response: 111210702
 Conc: 5.86 ng/ml



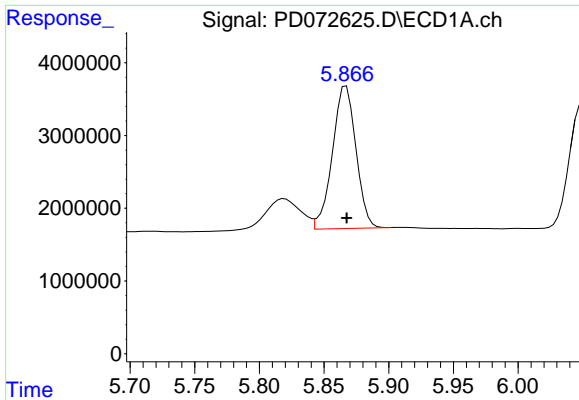
#12 4,4'-DDE

R.T.: 5.157 min
 Delta R.T.: 0.000 min
 Response: 26673767
 Conc: 10.08 ng/ml



#12 4,4'-DDE

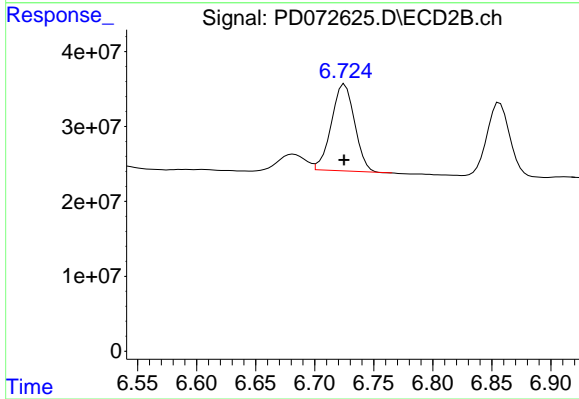
R.T.: 6.105 min
 Delta R.T.: 0.000 min
 Response: 196556398
 Conc: 11.25 ng/ml



#15 Endosulfan II

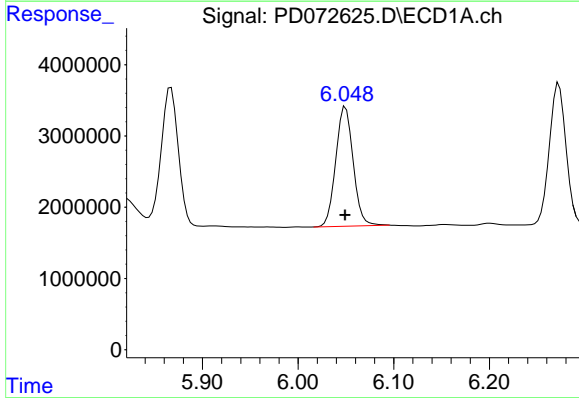
R.T.: 5.867 min
Delta R.T.: 0.000 min
Response: 24800494
Conc: 10.90 ng/ml

Instrument :
ECD_D
ClientSampleId :



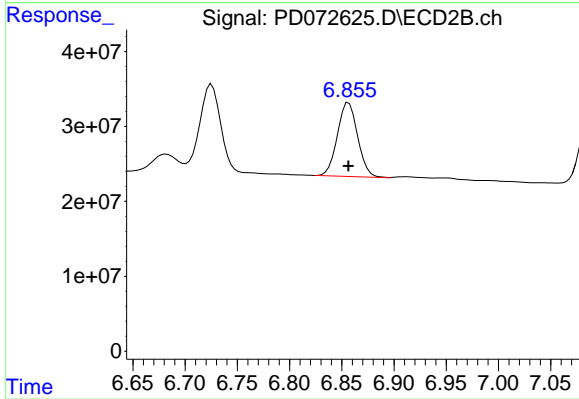
#15 Endosulfan II

R.T.: 6.725 min
Delta R.T.: 0.000 min
Response: 158120988
Conc: 11.29 ng/ml



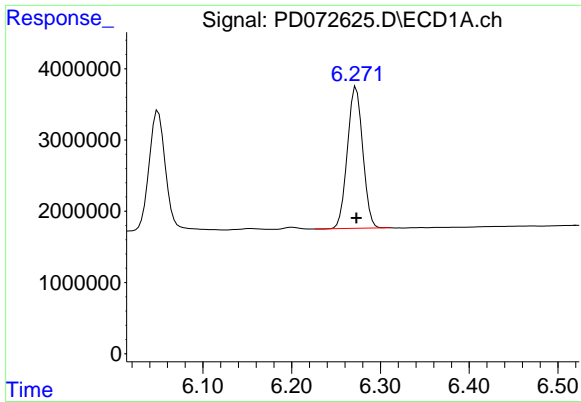
#18 Endrin aldehyde

R.T.: 6.050 min
Delta R.T.: 0.000 min
Response: 21246375
Conc: 11.13 ng/ml



#18 Endrin aldehyde

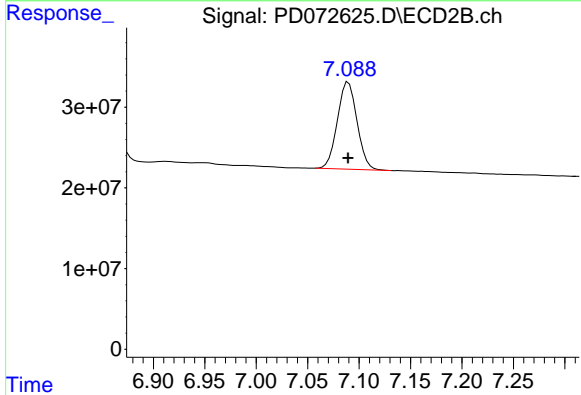
R.T.: 6.857 min
Delta R.T.: 0.000 min
Response: 132940168
Conc: 11.31 ng/ml



#19 Endosulfan Sulfate

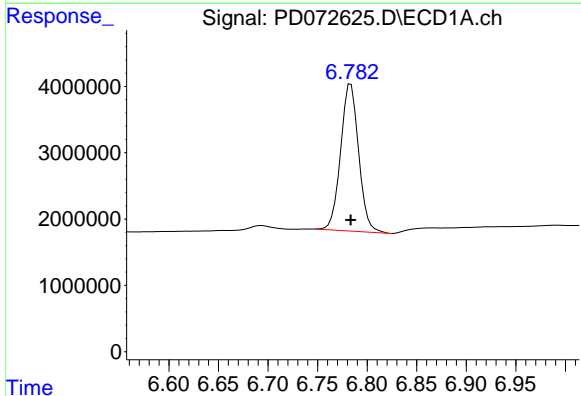
R.T.: 6.273 min
 Delta R.T.: 0.000 min
 Response: 23911700
 Conc: 10.74 ng/ml

Instrument :
 ECD_D
 ClientSampleId :



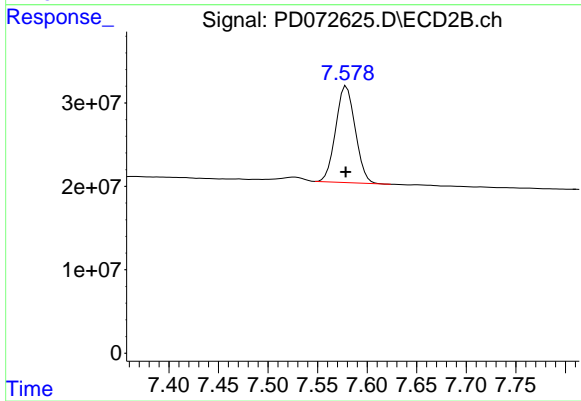
#19 Endosulfan Sulfate

R.T.: 7.090 min
 Delta R.T.: 0.000 min
 Response: 143520314
 Conc: 11.07 ng/ml



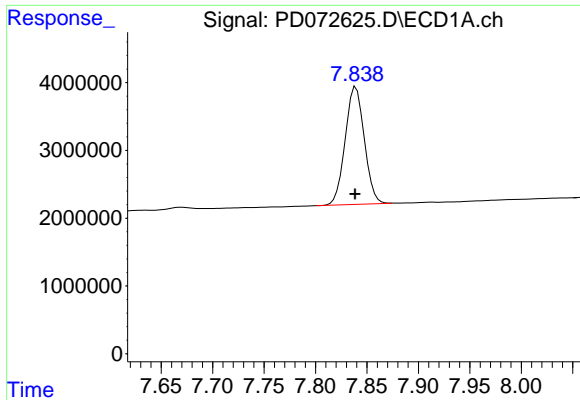
#21 Endrin ketone

R.T.: 6.784 min
 Delta R.T.: 0.000 min
 Response: 27939769
 Conc: 10.65 ng/ml



#21 Endrin ketone

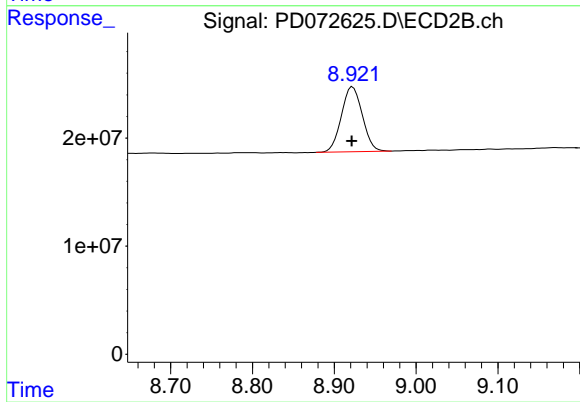
R.T.: 7.579 min
 Delta R.T.: 0.000 min
 Response: 158214568
 Conc: 11.18 ng/ml



#27 Decachlorobiphenyl

R.T.: 7.839 min
Delta R.T.: 0.001 min
Response: 22495235
Conc: 11.33 ng/ml

Instrument :
ECD_D
ClientSampleId :



#27 Decachlorobiphenyl

R.T.: 8.922 min
Delta R.T.: 0.001 min
Response: 106450524
Conc: 11.00 ng/ml