

Data Path : Z:\pestpcbsrv\HPCHEM1\ECD_D\Data\PD102622\
 Data File : PD072622.D
 Signal(s) : Signal #1: ECD1A.ch Signal #2: ECD2B.ch
 Acq On : 26 Oct 2022 11:56
 Operator : AR\AJ
 Sample : TOXAPH401
 Misc :
 ALS Vial : 7 Sample Multiplier: 1

Instrument :
 ECD_D
 ClientSampleId :
 TOXAPH4055

Integration File signal 1: autoint1.e
 Integration File signal 2: autoint2.e
 Quant Time: Oct 26 15:14:15 2022
 Quant Method : Z:\pestpcbsrv\HPCHEM1\ECD_D\Method\PD102622CLP.M
 Quant Title : GC Extractables
 QLast Update : Wed Oct 26 15:12:42 2022
 Response via : Initial Calibration
 Integrator: ChemStation

Volume Inj. : 1 µl
 Signal #1 Phase : ZB-MR2 Signal #2 Phase: ZB-MR1
 Signal #1 Info : 30M x 0.32mm x0.2 Signal #2 Info : 30M x 0.32mm x 0.50µm

	Compound	RT#1	RT#2	Resp#1	Resp#2	ng/ml	ng/ml

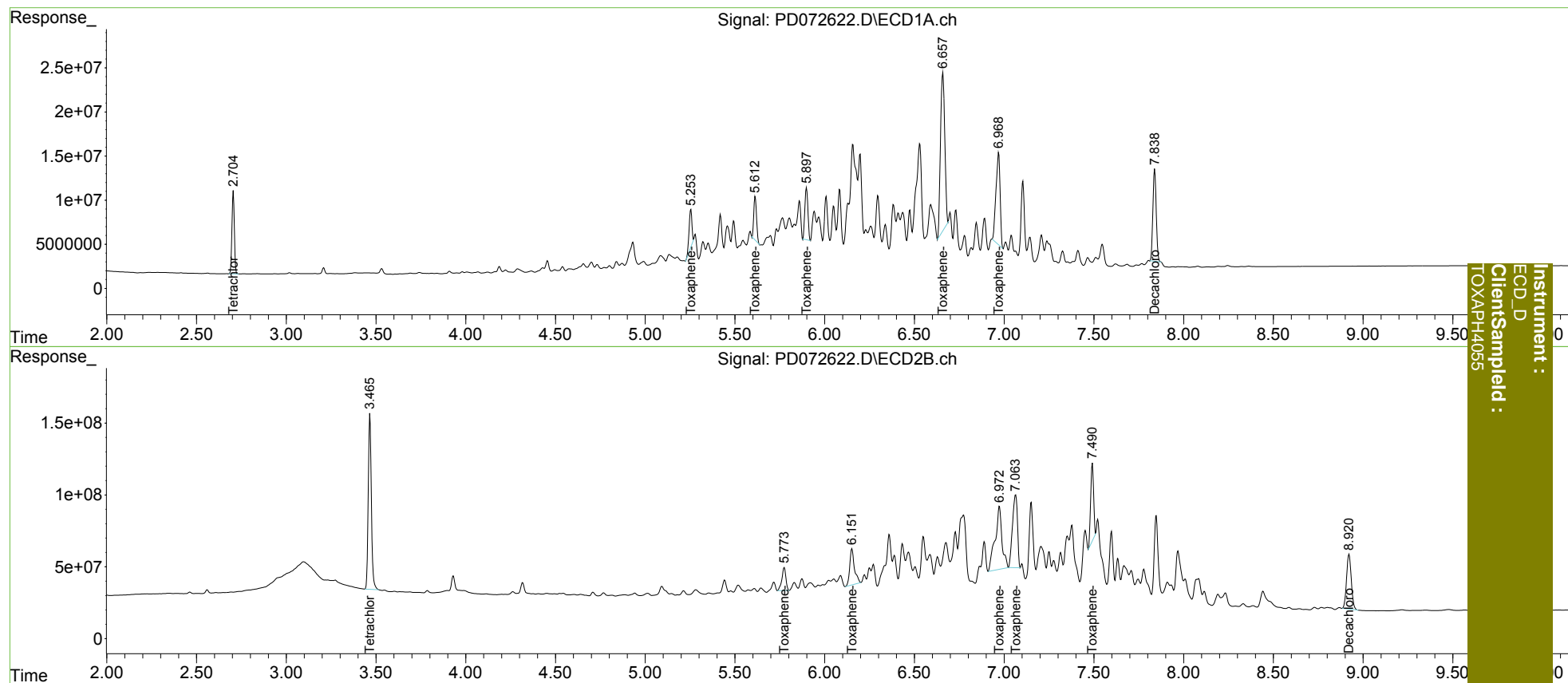
System Monitoring Compounds							
1)	SA Tetrachlo...	2.705	3.466	87248616	1462.8E6	38.253	37.164
27)	SA Decachlor...	7.839	8.922	134.1E6	694.2E6	74.983	75.136
Target Compounds							
22)	Toxaphene-1	5.254	5.775	49720198	248.2E6	3871.347	3639.010
23)	Toxaphene-2	5.613	6.152	51283942	454.0E6	3828.211	3698.363
24)	Toxaphene-3	5.899	6.974	70030399	1169.6E6	3887.936	3804.776
25)	Toxaphene-4	6.658	7.064	297.6E6	979.8E6	4047.588	3850.931
26)	Toxaphene-5	6.969	7.492	165.9E6	612.8E6	3990.406	3983.083

(f)=RT Delta > 1/2 Window (#)=Amounts differ by > 25% (m)=manual int.

Data Path : Z:\pestpcbsrv\HPCHEM1\ECD_D\Data\PD102622\
 Data File : PD072622.D
 Signal(s) : Signal #1: ECD1A.ch Signal #2: ECD2B.ch
 Acq On : 26 Oct 2022 11:56
 Operator : AR\AJ
 Sample : TOXAPH401
 Misc :
 ALS Vial : 7 Sample Multiplier: 1

Integration File signal 1: autoint1.e
 Integration File signal 2: autoint2.e
 Quant Time: Oct 26 15:14:15 2022
 Quant Method : Z:\pestpcbsrv\HPCHEM1\ECD_D\Method\PD102622CLP.M
 Quant Title : GC Extractables
 QLast Update : Wed Oct 26 15:12:42 2022
 Response via : Initial Calibration
 Integrator: ChemStation

Volume Inj. : 1 µl
 Signal #1 Phase : ZB-MR2 Signal #2 Phase: ZB-MR1
 Signal #1 Info : 30M x 0.32mm x0.2 Signal #2 Info : 30M x 0.32mm x 0.50µm



Instrument : ECD_D
 Client Sampled : TOXAPH405