

Data Path : Z:\pestpcbsrv\HPCHEM1\ECD_D\Data\PD102623\
 Data File : PD079174.D
 Signal(s) : Signal #1: ECD1A.ch Signal #2: ECD2B.ch
 Acq On : 26 Oct 2023 13:09
 Operator : AR\AJ
 Sample : I.BLK
 Misc :
 ALS Vial : 2 Sample Multiplier: 1

Instrument :
 ECD_D
 ClientSampleId :

Integration File signal 1: autoint1.e
 Integration File signal 2: autoint2.e
 Quant Time: Oct 26 22:52:05 2023
 Quant Method : Z:\pestpcbsrv\HPCHEM1\ECD_D\Method\PD102023.M
 Quant Title : GC Extractables
 QLast Update : Fri Oct 20 04:44:01 2023
 Response via : Initial Calibration
 Integrator: ChemStation

Volume Inj. : 1 µl
 Signal #1 Phase : ZB-MR1 Signal #2 Phase: ZB-MR2
 Signal #1 Info : 30M x 0.32mm x0.5 Signal #2 Info : 30M x 0.32mm x 0.25µm

	Compound	RT#1	RT#2	Resp#1	Resp#2	ng/ml	ng/ml

System Monitoring Compounds							
1)	SA Tetrachlo...	3.570	2.805	39309283	58657940	24.346	25.335
28)	SA Decachlor...	9.119	7.955	47686938	63997212	23.772	26.255
Target Compounds							
2)	A alpha-BHC	0.000	3.297	0	125370	N.D.	0.036 #
3)	MA gamma-BHC...	0.000	3.657f	0	275790	N.D.	0.081 #
4)	MA Heptachlor	4.938	0.000	173389	0	0.065	N.D. #
5)	MB Aldrin	0.000	4.285f	0	1382147	N.D.	0.423 #
7)	B delta-BHC	4.798	4.188f	289110	1384417	0.108	0.413 #
8)	B Heptachlo...	5.717	4.739f	8030267	39281	3.426	0.013 #
9)	A Endosulfan I	6.141f	0.000	466713	0	0.215	N.D. #
10)	B gamma-Chl...	5.975	0.000	113436	0	0.049	N.D. #
11)	B alpha-Chl...	0.000	5.098f	0	473156	N.D.	0.165 #
13)	MA Dieldrin	0.000	5.374f	0	400572	N.D.	0.135 #
14)	MA Endrin	0.000	5.691	0	331980	N.D.	0.130 #
15)	B Endosulfa...	6.807f	0.000	429830	0	0.211	N.D. #
16)	A 4,4'-DDD	6.748	0.000	263011	0	0.150	N.D. #
24)	Chlordane-2	0.000	4.413f	0	1002972	N.D.	11.039 #
25)	Chlordane-3	5.975	0.000	113436	0	0.366	N.D. #
26)	Chlordane-4	0.000	5.098f	0	473156	N.D.	1.928 #

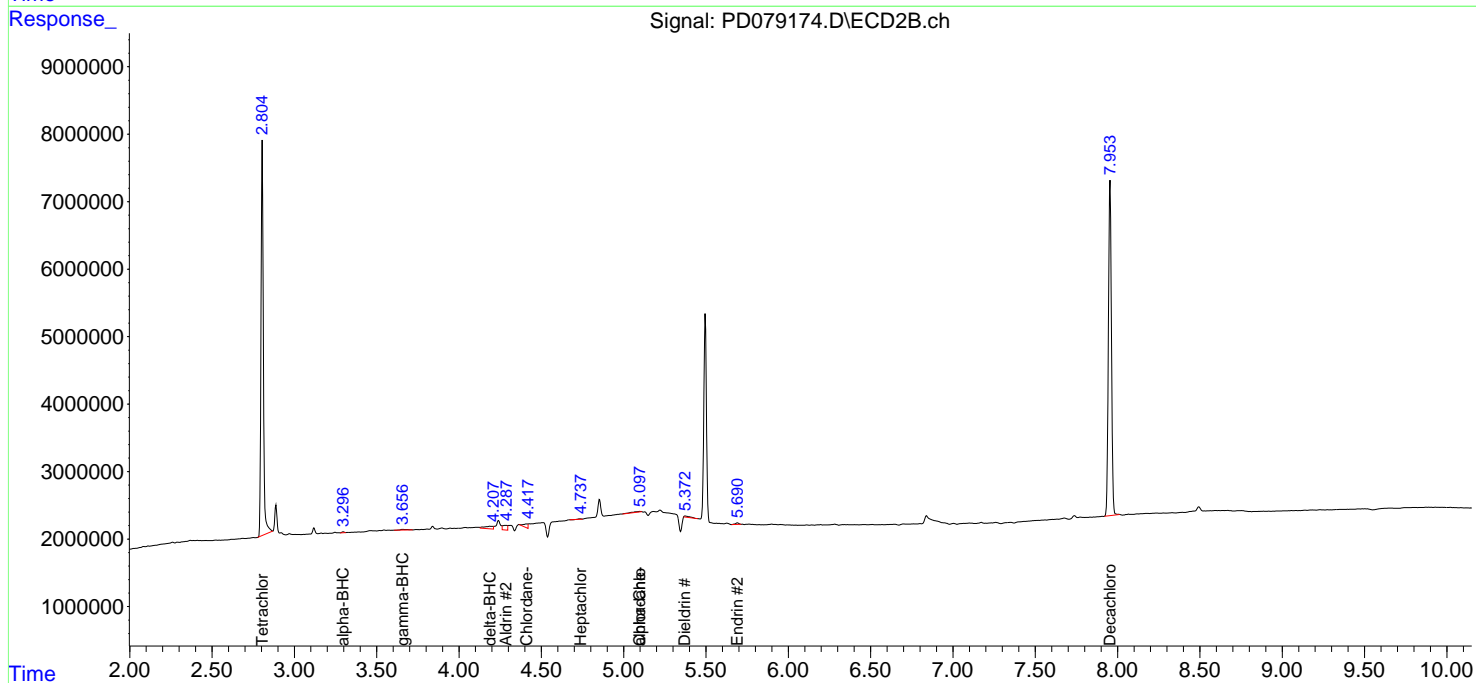
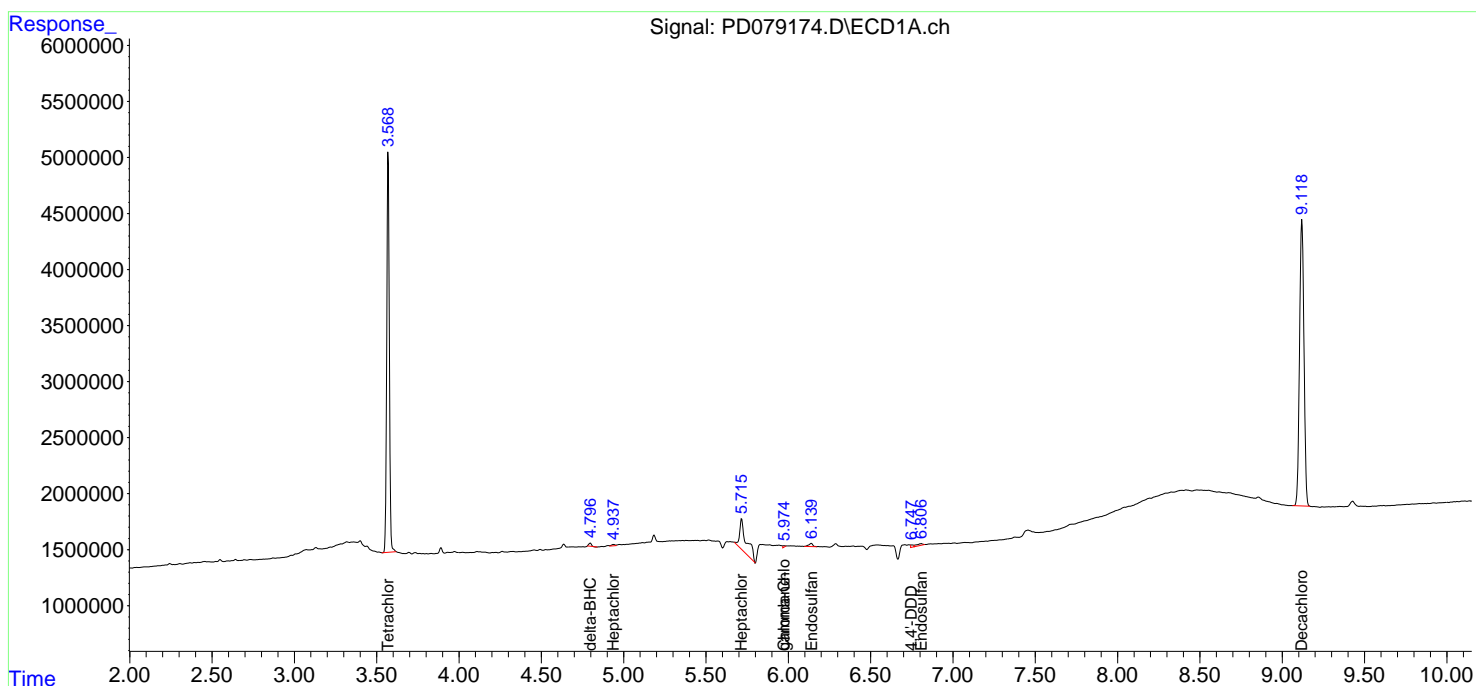
(f)=RT Delta > 1/2 Window (#)=Amounts differ by > 25% (m)=manual int.

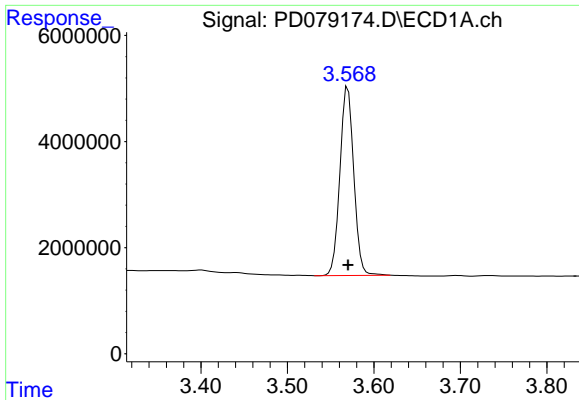
Data Path : Z:\pestpcbsrv\HPCHEM1\ECD_D\Data\PD102623\
 Data File : PD079174.D
 Signal(s) : Signal #1: ECD1A.ch Signal #2: ECD2B.ch
 Acq On : 26 Oct 2023 13:09
 Operator : AR\AJ
 Sample : I.BLK
 Misc :
 ALS Vial : 2 Sample Multiplier: 1

Instrument :
 ECD_D
 ClientSampleId :

Integration File signal 1: autoint1.e
 Integration File signal 2: autoint2.e
 Quant Time: Oct 26 22:52:05 2023
 Quant Method : Z:\pestpcbsrv\HPCHEM1\ECD_D\Method\PD102023.M
 Quant Title : GC Extractables
 QLast Update : Fri Oct 20 04:44:01 2023
 Response via : Initial Calibration
 Integrator: ChemStation

Volume Inj. : 1 µl
 Signal #1 Phase : ZB-MR1 Signal #2 Phase: ZB-MR2
 Signal #1 Info : 30M x 0.32mm x0.5 Signal #2 Info : 30M x 0.32mm x 0.25µm

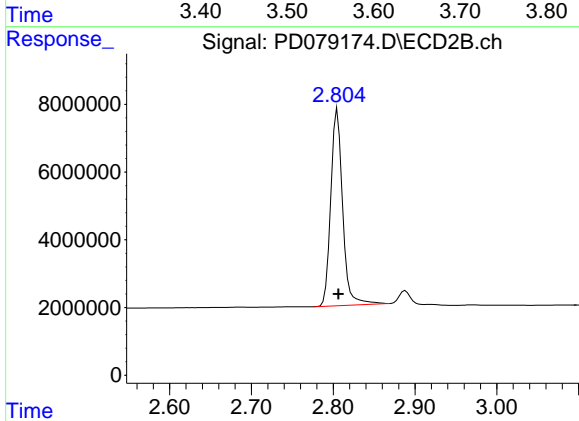




#1 Tetrachloro-m-xylene

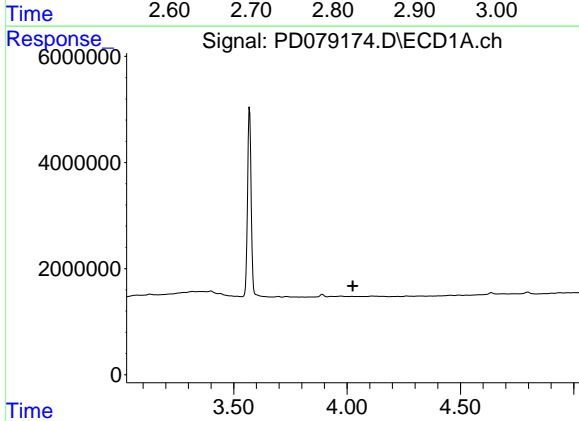
R.T.: 3.570 min
 Delta R.T.: 0.000 min
 Response: 39309283
 Conc: 24.35 ng/ml

Instrument :
 ECD_D
 ClientSampleId :



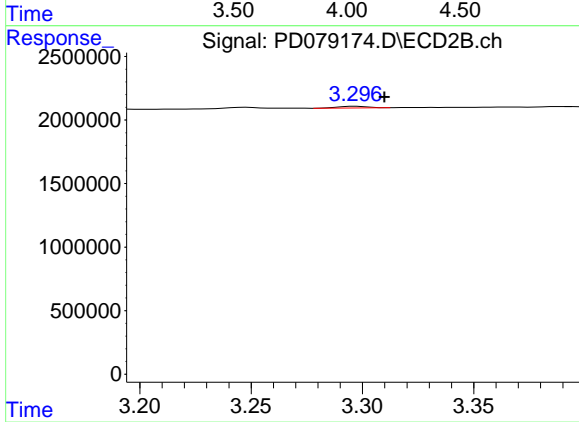
#1 Tetrachloro-m-xylene

R.T.: 2.805 min
 Delta R.T.: -0.001 min
 Response: 58657940
 Conc: 25.34 ng/ml



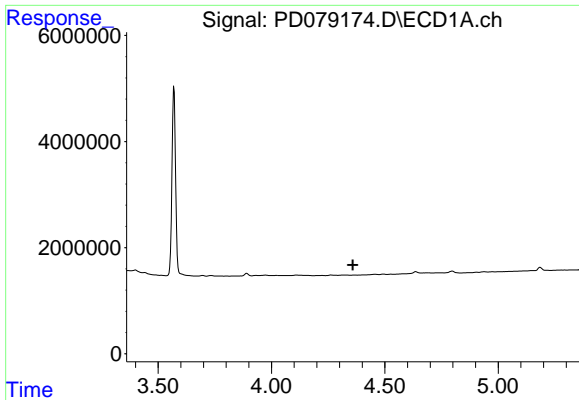
#2 alpha-BHC

R.T.: 0.000 min
 Exp R.T. : 4.026 min
 Response: 0
 Conc: N.D.



#2 alpha-BHC

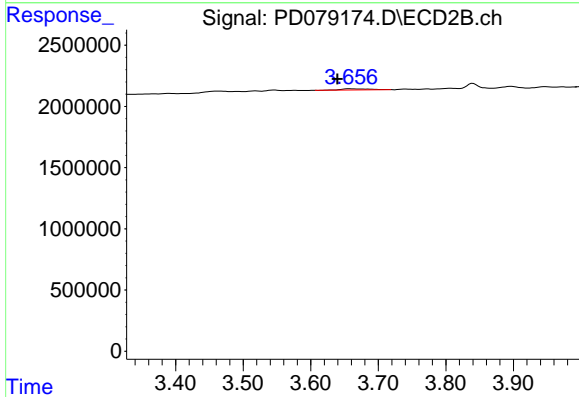
R.T.: 3.297 min
 Delta R.T.: -0.013 min
 Response: 125370
 Conc: 0.04 ng/ml



#3 gamma-BHC (Lindane)

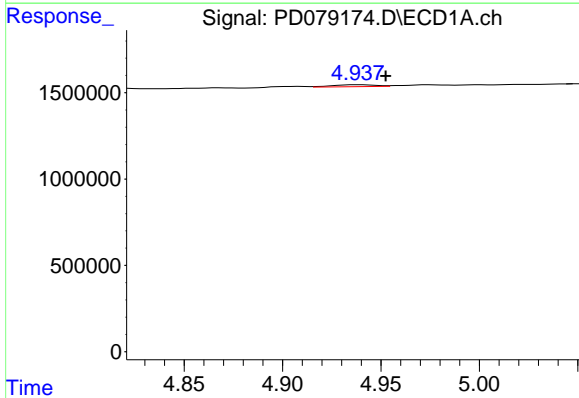
R.T.: 0.000 min
 Exp R.T.: 4.359 min
 Response: 0
 Conc: N.D.

Instrument :
 ECD_D
 ClientSampleId :



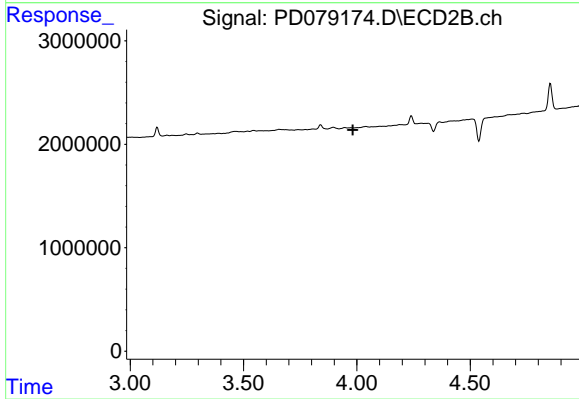
#3 gamma-BHC (Lindane)

R.T.: 3.657 min
 Delta R.T.: 0.018 min
 Response: 275790
 Conc: 0.08 ng/ml



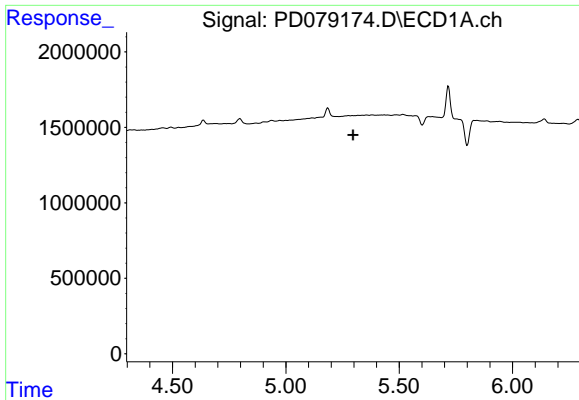
#4 Heptachlor

R.T.: 4.938 min
 Delta R.T.: -0.014 min
 Response: 173389
 Conc: 0.06 ng/ml



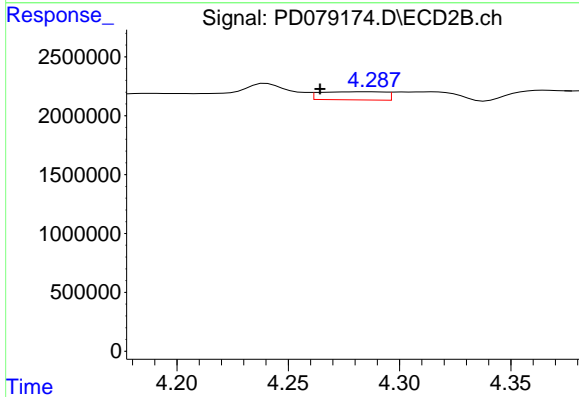
#4 Heptachlor

R.T.: 0.000 min
 Exp R.T.: 3.983 min
 Response: 0
 Conc: N.D.

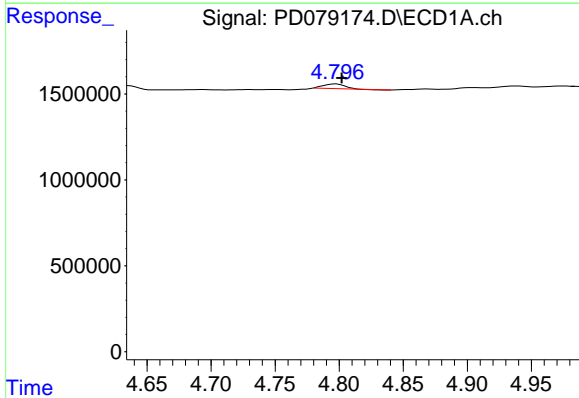


#5 Aldrin
 R.T.: 0.000 min
 Exp R.T.: 5.296 min
 Response: 0
 Conc: N.D.

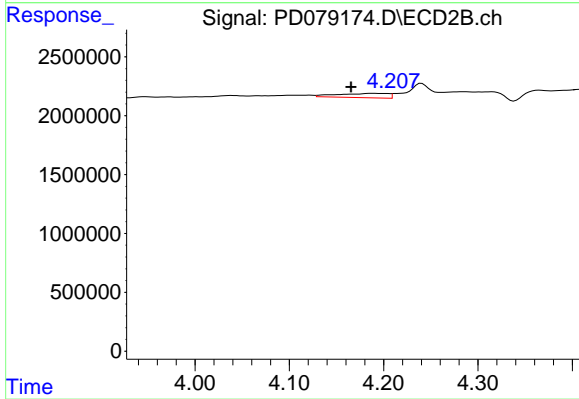
Instrument :
 ECD_D
 ClientSampleId :



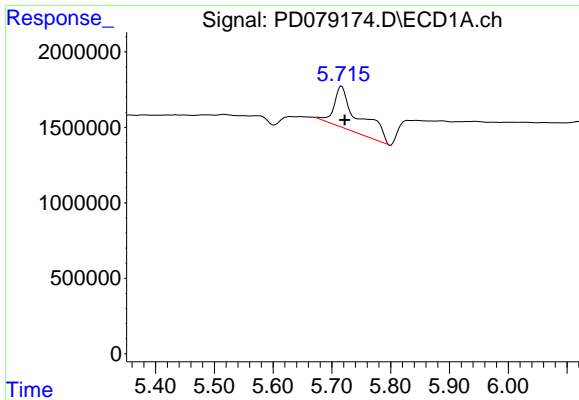
#5 Aldrin
 R.T.: 4.285 min
 Delta R.T.: 0.021 min
 Response: 1382147
 Conc: 0.42 ng/ml



#7 delta-BHC
 R.T.: 4.798 min
 Delta R.T.: -0.004 min
 Response: 289110
 Conc: 0.11 ng/ml

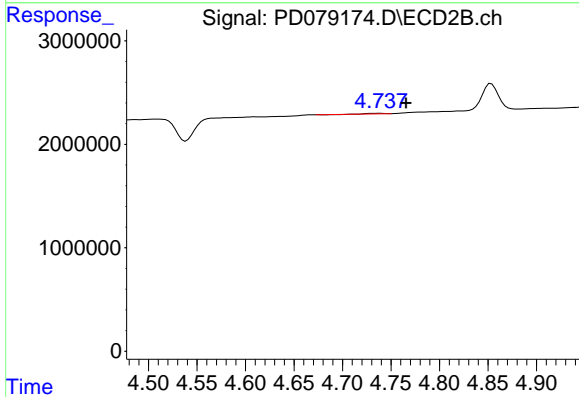


#7 delta-BHC
 R.T.: 4.188 min
 Delta R.T.: 0.023 min
 Response: 1384417
 Conc: 0.41 ng/ml

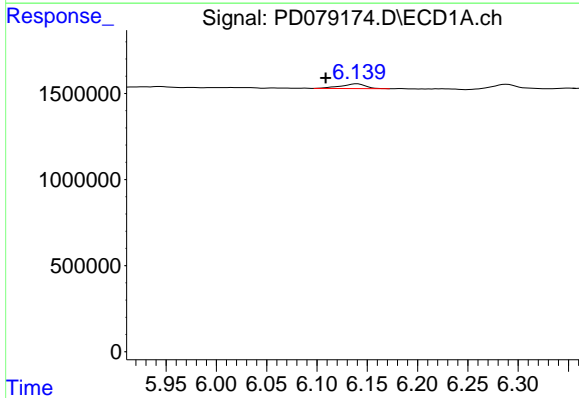


#8 Heptachlor epoxide
 R.T.: 5.717 min
 Delta R.T.: -0.006 min
 Response: 8030267
 Conc: 3.43 ng/ml

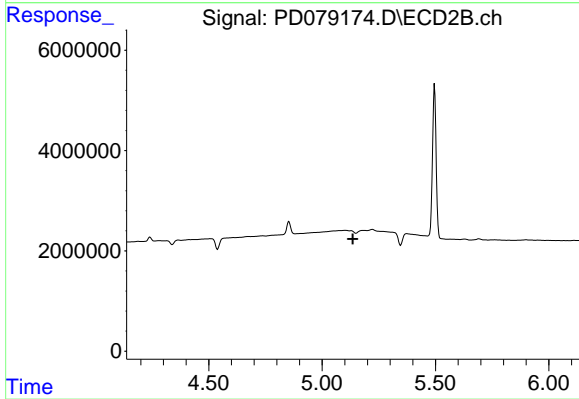
Instrument :
 ECD_D
 ClientSampleId :



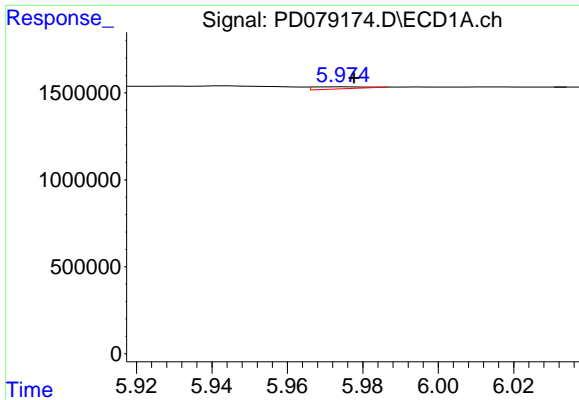
#8 Heptachlor epoxide
 R.T.: 4.739 min
 Delta R.T.: -0.027 min
 Response: 39281
 Conc: 0.01 ng/ml



#9 Endosulfan I
 R.T.: 6.141 min
 Delta R.T.: 0.032 min
 Response: 466713
 Conc: 0.22 ng/ml



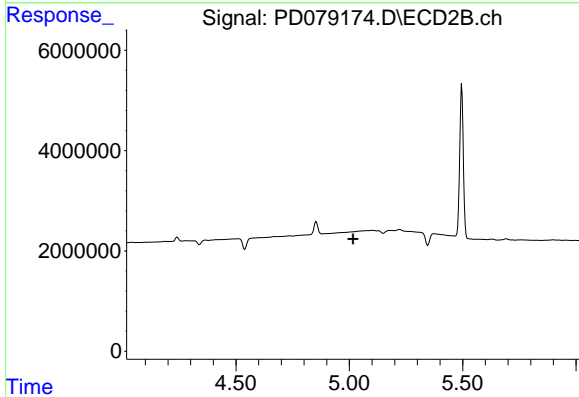
#9 Endosulfan I
 R.T.: 0.000 min
 Exp R.T. : 5.136 min
 Response: 0
 Conc: N.D.



#10 gamma-Chlordane

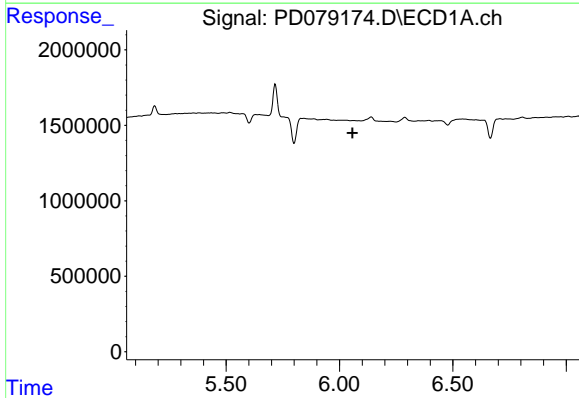
R.T.: 5.975 min
 Delta R.T.: -0.002 min
 Response: 113436
 Conc: 0.05 ng/ml

Instrument :
 ECD_D
 ClientSampleId :



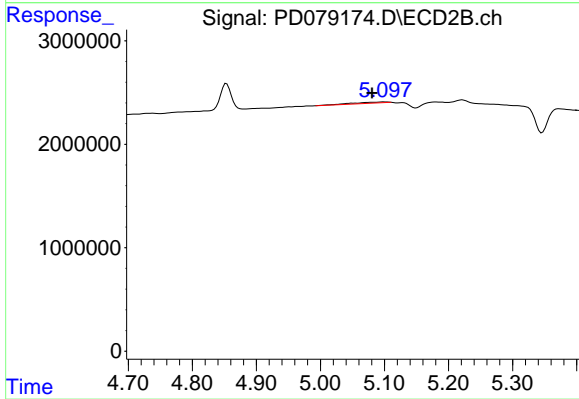
#10 gamma-Chlordane

R.T.: 0.000 min
 Exp R.T. : 5.016 min
 Response: 0
 Conc: N.D.



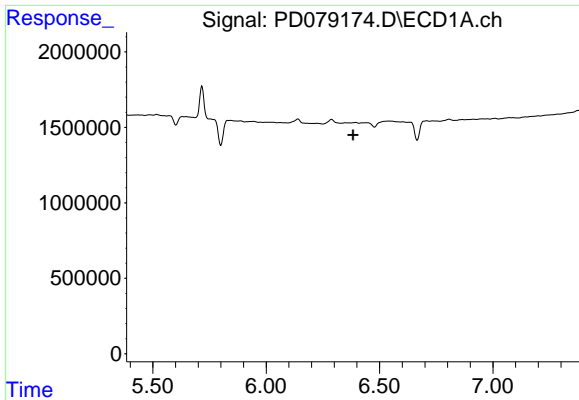
#11 alpha-Chlordane

R.T.: 0.000 min
 Exp R.T. : 6.058 min
 Response: 0
 Conc: N.D.



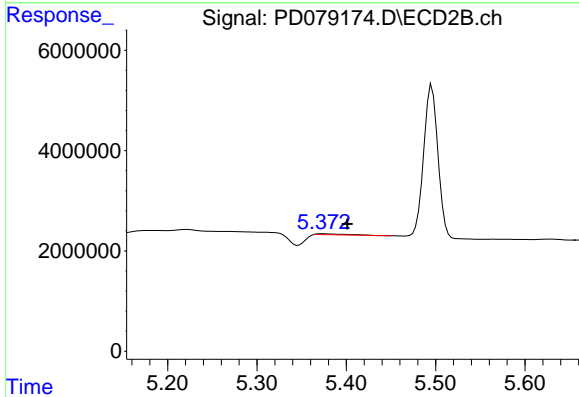
#11 alpha-Chlordane

R.T.: 5.098 min
 Delta R.T.: 0.018 min
 Response: 473156
 Conc: 0.16 ng/ml

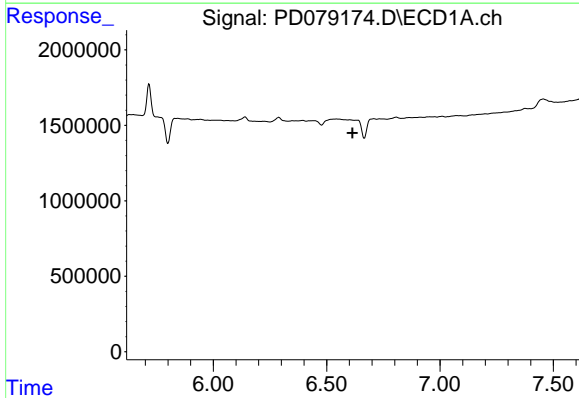


#13 Dieldrin
 R.T.: 0.000 min
 Exp R.T. : 6.384 min
 Response: 0
 Conc: N.D.

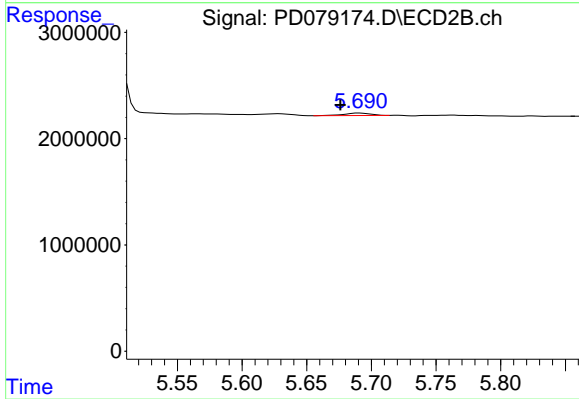
Instrument :
 ECD_D
 ClientSampleId :



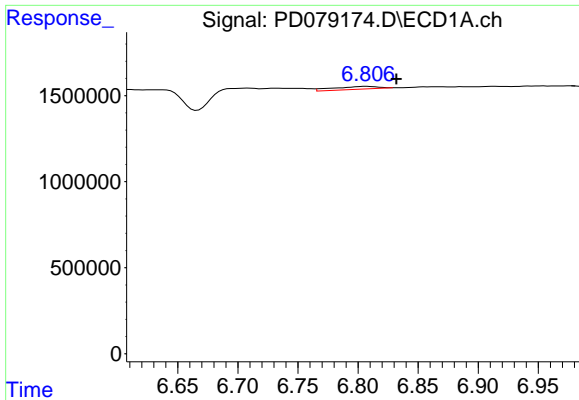
#13 Dieldrin
 R.T.: 5.374 min
 Delta R.T.: -0.028 min
 Response: 400572
 Conc: 0.13 ng/ml



#14 Endrin
 R.T.: 0.000 min
 Exp R.T. : 6.614 min
 Response: 0
 Conc: N.D.



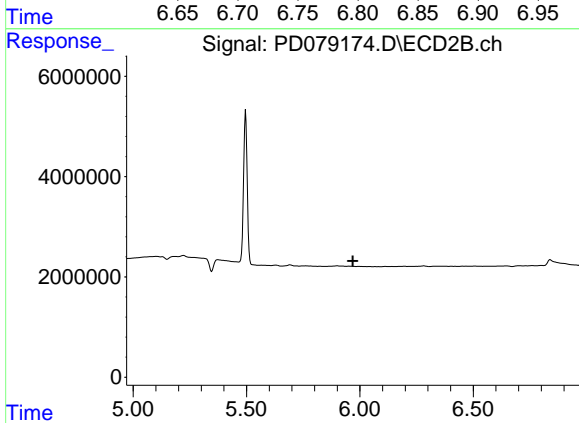
#14 Endrin
 R.T.: 5.691 min
 Delta R.T.: 0.015 min
 Response: 331980
 Conc: 0.13 ng/ml



#15 Endosulfan II

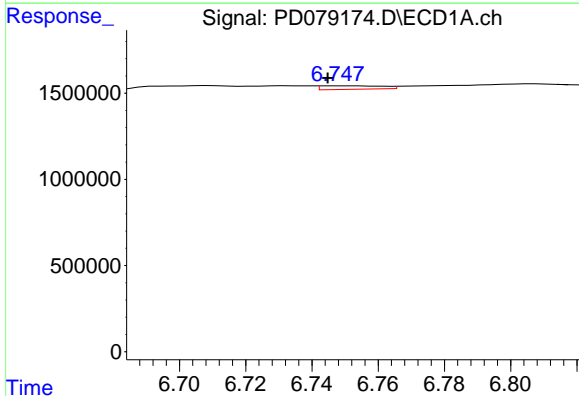
R.T.: 6.807 min
 Delta R.T.: -0.024 min
 Response: 429830
 Conc: 0.21 ng/ml

Instrument :
 ECD_D
 ClientSampleId :



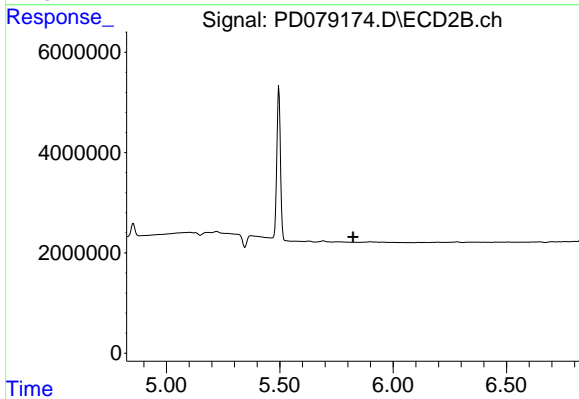
#15 Endosulfan II

R.T.: 0.000 min
 Exp R.T. : 5.968 min
 Response: 0
 Conc: N.D.



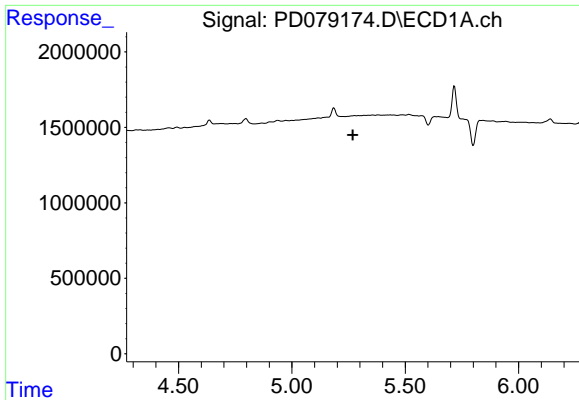
#16 4,4'-DDD

R.T.: 6.748 min
 Delta R.T.: 0.003 min
 Response: 263011
 Conc: 0.15 ng/ml



#16 4,4'-DDD

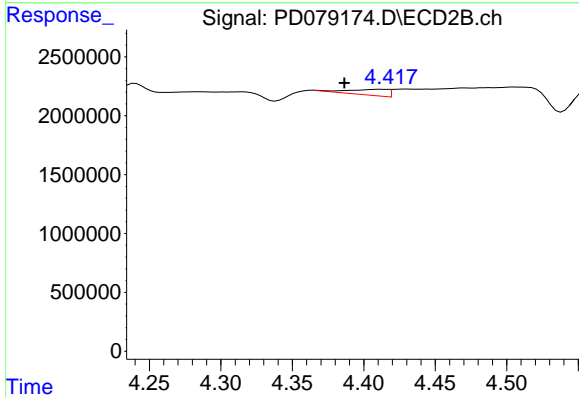
R.T.: 0.000 min
 Exp R.T. : 5.823 min
 Response: 0
 Conc: N.D.



#24 Chlordane-2

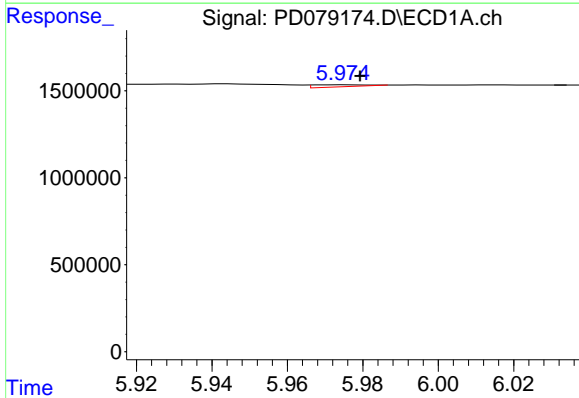
R.T.: 0.000 min
 Exp R.T. : 5.268 min
 Response: 0
 Conc: N.D.

Instrument :
 ECD_D
 ClientSampleId :



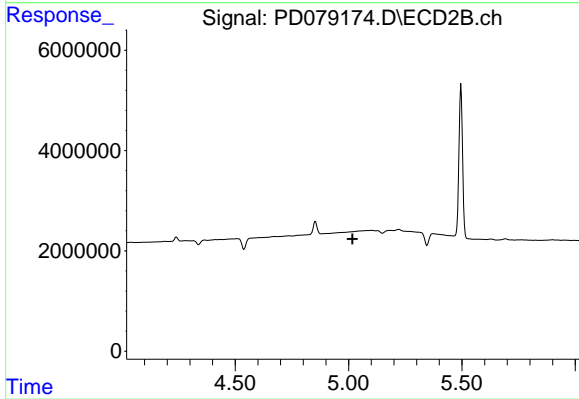
#24 Chlordane-2

R.T.: 4.413 min
 Delta R.T.: 0.026 min
 Response: 1002972
 Conc: 11.04 ng/ml



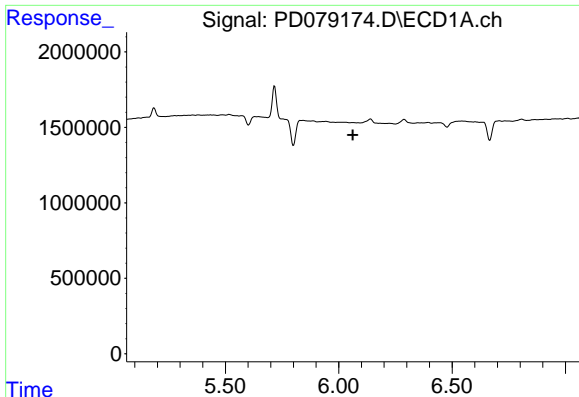
#25 Chlordane-3

R.T.: 5.975 min
 Delta R.T.: -0.004 min
 Response: 113436
 Conc: 0.37 ng/ml



#25 Chlordane-3

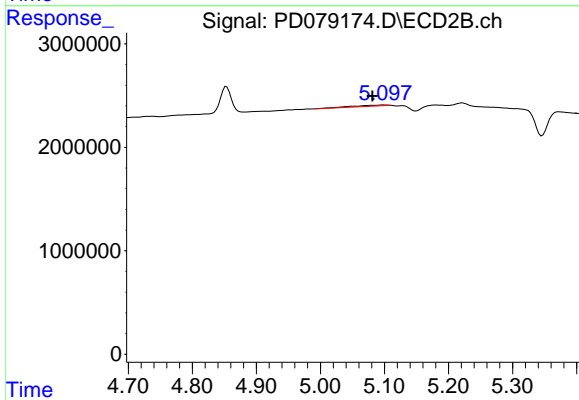
R.T.: 0.000 min
 Exp R.T. : 5.018 min
 Response: 0
 Conc: N.D.



#26 Chlordane-4

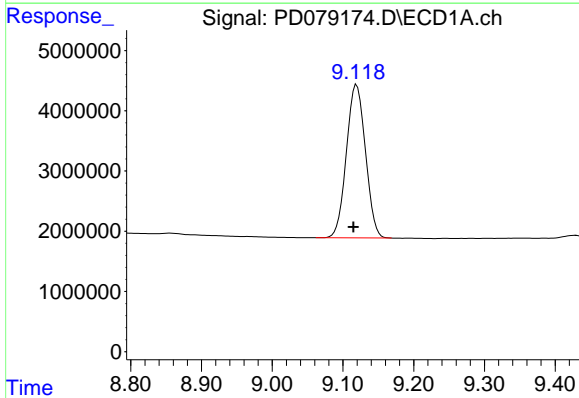
R.T.: 0.000 min
 Exp R.T.: 6.062 min
 Response: 0
 Conc: N.D.

Instrument :
 ECD_D
 ClientSampleId :



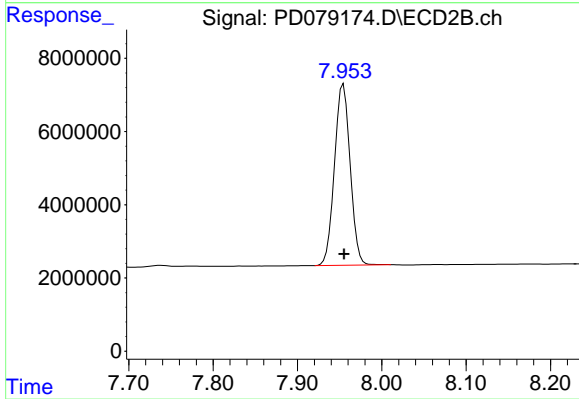
#26 Chlordane-4

R.T.: 5.098 min
 Delta R.T.: 0.017 min
 Response: 473156
 Conc: 1.93 ng/ml



#28 Decachlorobiphenyl

R.T.: 9.119 min
 Delta R.T.: 0.005 min
 Response: 47686938
 Conc: 23.77 ng/ml



#28 Decachlorobiphenyl

R.T.: 7.955 min
 Delta R.T.: 0.000 min
 Response: 63997212
 Conc: 26.26 ng/ml