

Data Path : Z:\pestpcbsrv\HPCHEM1\ECD\_D\Data\PD102623\  
 Data File : PD079175.D  
 Signal(s) : Signal #1: ECD1A.ch Signal #2: ECD2B.ch  
 Acq On : 26 Oct 2023 13:27  
 Operator : AR\AJ  
 Sample : PSTDCCC050  
 Misc :  
 ALS Vial : 4 Sample Multiplier: 1

Instrument :  
 ECD\_D  
 ClientSampleId :  
 PSTDCCC050

Integration File signal 1: autoint1.e  
 Integration File signal 2: autoint2.e  
 Quant Time: Oct 26 22:52:21 2023  
 Quant Method : Z:\pestpcbsrv\HPCHEM1\ECD\_D\Method\PD102023.M  
 Quant Title : GC Extractables  
 QLast Update : Fri Oct 20 04:44:01 2023  
 Response via : Initial Calibration  
 Integrator: ChemStation

Volume Inj. : 1 µl  
 Signal #1 Phase : ZB-MR2 Signal #2 Phase: ZB-MR2  
 Signal #1 Info : 30M x 0.32mm x0.5 Signal #2 Info : 30M x 0.32mm x 0.25µm

| Compound                    | RT#1  | RT#2  | Resp#1   | Resp#2   | ng/ml  | ng/ml  |
|-----------------------------|-------|-------|----------|----------|--------|--------|
| -----                       |       |       |          |          |        |        |
| System Monitoring Compounds |       |       |          |          |        |        |
| 1) SA Tetrachlo...          | 3.576 | 2.805 | 80161497 | 120.0E6  | 49.648 | 51.846 |
| 28) SA Decachlor...         | 9.122 | 7.956 | 94958557 | 129.5E6  | 47.337 | 53.139 |
| Target Compounds            |       |       |          |          |        |        |
| 2) A alpha-BHC              | 4.033 | 3.309 | 138.5E6  | 187.8E6  | 52.033 | 54.173 |
| 3) MA gamma-BHC...          | 4.367 | 3.639 | 136.9E6  | 184.4E6  | 52.677 | 54.310 |
| 4) MA Heptachlor            | 4.960 | 3.982 | 137.7E6  | 171.7E6  | 51.460 | 56.205 |
| 5) MB Aldrin                | 5.303 | 4.264 | 134.0E6  | 179.5E6  | 51.987 | 54.862 |
| 6) B beta-BHC               | 4.559 | 3.934 | 54679105 | 74599971 | 51.026 | 52.941 |
| 7) B delta-BHC              | 4.809 | 4.166 | 141.4E6  | 187.1E6  | 52.823 | 55.888 |
| 8) B Heptachlo...           | 5.730 | 4.766 | 122.1E6  | 160.6E6  | 52.081 | 54.169 |
| 9) A Endosulfan I           | 6.116 | 5.136 | 110.8E6  | 140.2E6  | 51.124 | 52.966 |
| 10) B gamma-Chl...          | 5.985 | 5.017 | 118.8E6  | 154.9E6  | 51.813 | 53.992 |
| 11) B alpha-Chl...          | 6.065 | 5.081 | 117.3E6  | 152.8E6  | 51.461 | 53.248 |
| 12) B 4,4'-DDE              | 6.236 | 5.270 | 109.0E6  | 148.5E6  | 51.564 | 55.788 |
| 13) MA Dieldrin             | 6.392 | 5.401 | 119.0E6  | 164.6E6  | 51.091 | 55.431 |
| 14) MA Endrin               | 6.622 | 5.677 | 98785573 | 144.6E6  | 50.721 | 56.490 |
| 15) B Endosulfa...          | 6.839 | 5.969 | 102.5E6  | 137.1E6  | 50.251 | 54.924 |
| 16) A 4,4'-DDD              | 6.753 | 5.824 | 90003259 | 127.2E6  | 51.198 | 55.664 |
| 17) MA 4,4'-DDT             | 7.068 | 6.076 | 96591907 | 129.5E6  | 51.008 | 56.556 |
| 18) B Endrin al...          | 6.969 | 6.149 | 77469912 | 102.6E6  | 50.165 | 55.159 |
| 19) B Endosulfa...          | 7.203 | 6.371 | 99941496 | 129.3E6  | 50.269 | 55.372 |
| 20) A Methoxychlor          | 7.541 | 6.651 | 53923489 | 73845083 | 49.210 | 54.393 |
| 21) B Endrin ke...          | 7.689 | 6.878 | 112.3E6  | 153.5E6  | 51.494 | 54.890 |
| 22) Mirex                   | 8.166 | 7.064 | 80672206 | 116.0E6  | 47.660 | 54.318 |

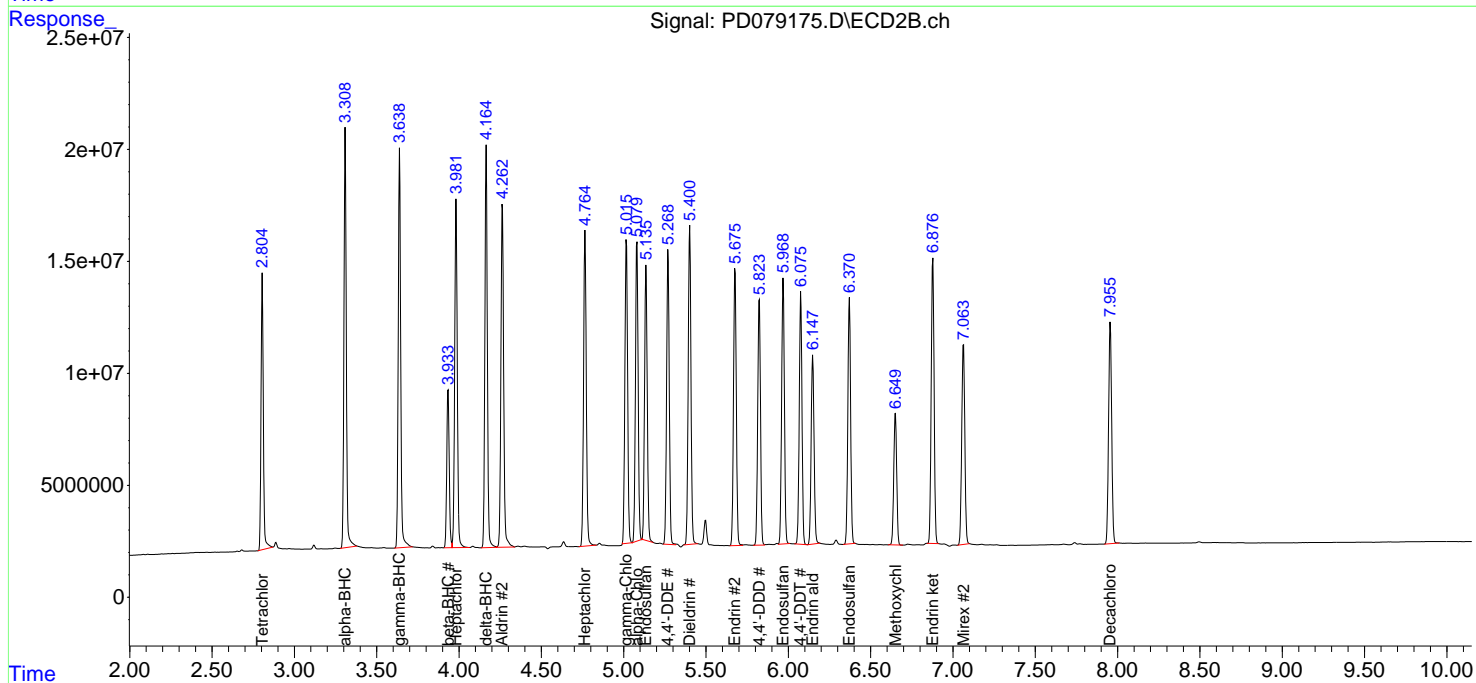
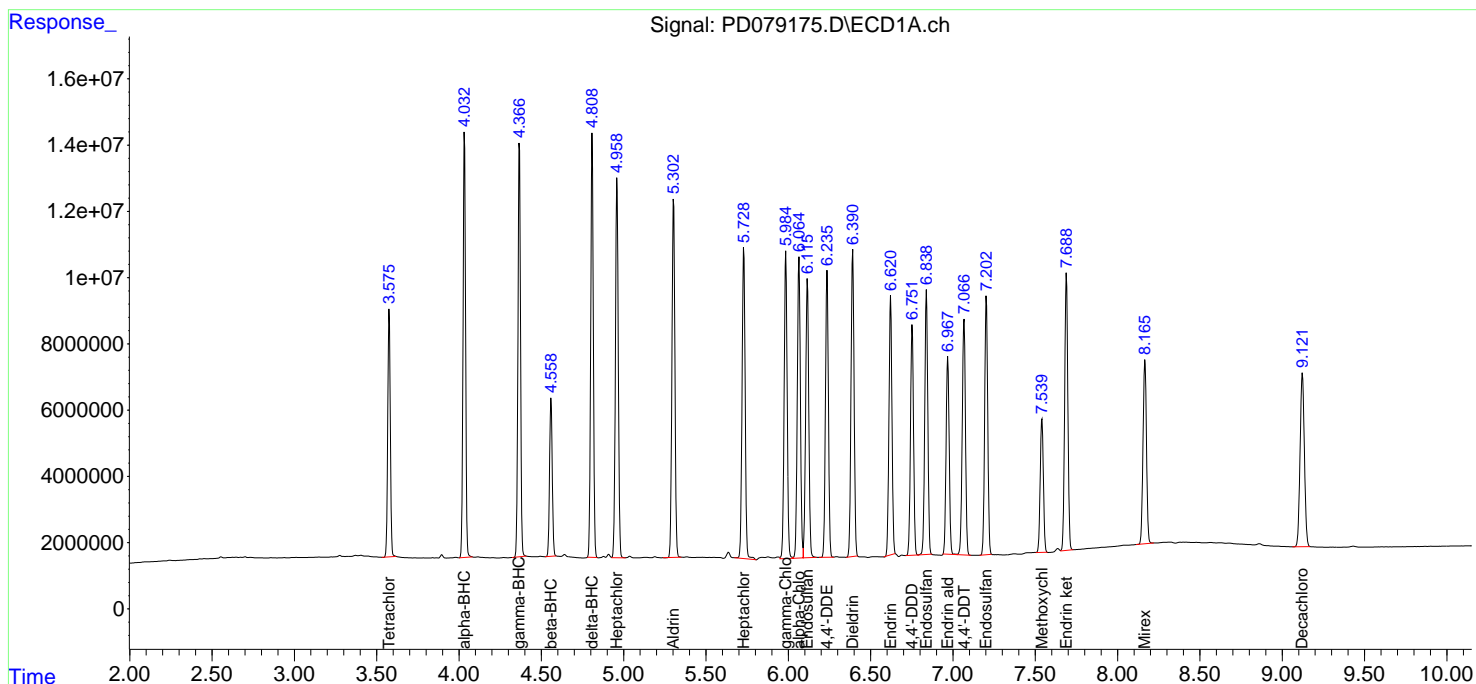
(f)=RT Delta > 1/2 Window (#)=Amounts differ by > 25% (m)=manual int.

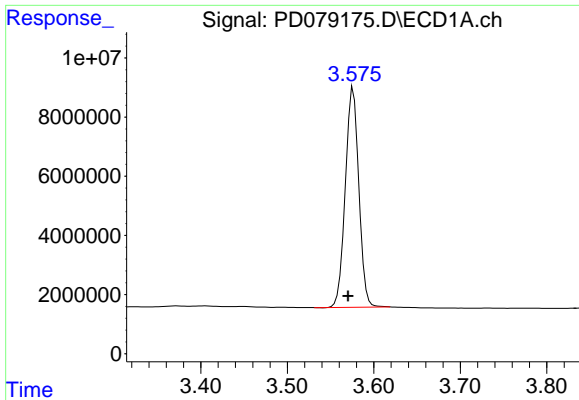
Data Path : Z:\pestpcbsrv\HPCHEM1\ECD\_D\Data\PD102623\  
 Data File : PD079175.D  
 Signal(s) : Signal #1: ECD1A.ch Signal #2: ECD2B.ch  
 Acq On : 26 Oct 2023 13:27  
 Operator : AR\AJ  
 Sample : PSTDCCC050  
 Misc :  
 ALS Vial : 4 Sample Multiplier: 1

Instrument :  
 ECD\_D  
 ClientSampleId :  
 PSTDCCC050

Integration File signal 1: autoint1.e  
 Integration File signal 2: autoint2.e  
 Quant Time: Oct 26 22:52:21 2023  
 Quant Method : Z:\pestpcbsrv\HPCHEM1\ECD\_D\Method\PD102023.M  
 Quant Title : GC Extractables  
 QLast Update : Fri Oct 20 04:44:01 2023  
 Response via : Initial Calibration  
 Integrator: ChemStation

Volume Inj. : 1 µl  
 Signal #1 Phase : ZB-MR1 Signal #2 Phase: ZB-MR2  
 Signal #1 Info : 30M x 0.32mm x0.5 Signal #2 Info : 30M x 0.32mm x 0.25µm

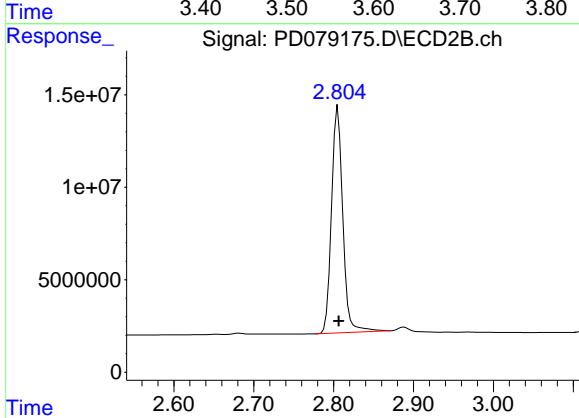




#1 Tetrachloro-m-xylene

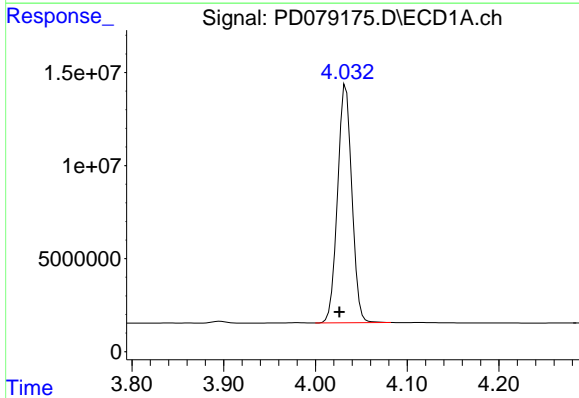
R.T.: 3.576 min  
Delta R.T.: 0.006 min  
Response: 80161497  
Conc: 49.65 ng/ml

Instrument :  
ECD\_D  
ClientSampleId :  
PSTDCCC050



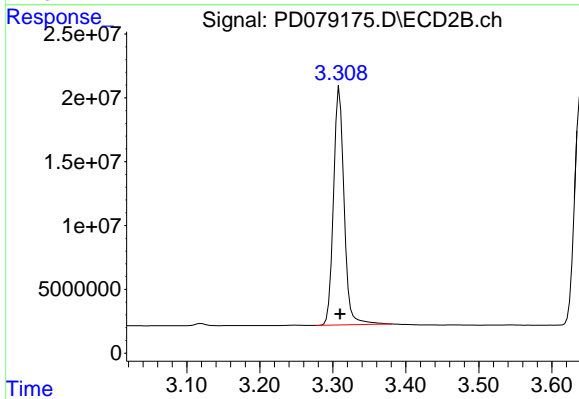
#1 Tetrachloro-m-xylene

R.T.: 2.805 min  
Delta R.T.: -0.001 min  
Response: 120038358  
Conc: 51.85 ng/ml



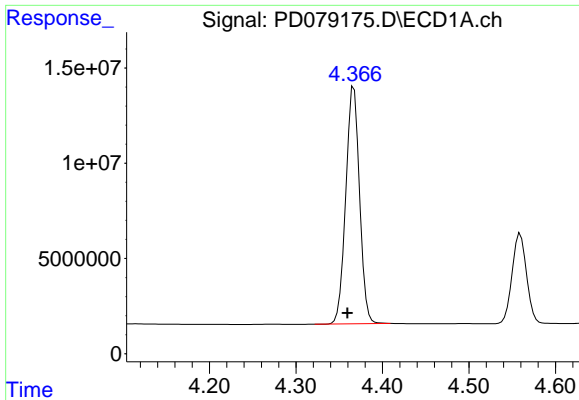
#2 alpha-BHC

R.T.: 4.033 min  
Delta R.T.: 0.007 min  
Response: 138516750  
Conc: 52.03 ng/ml



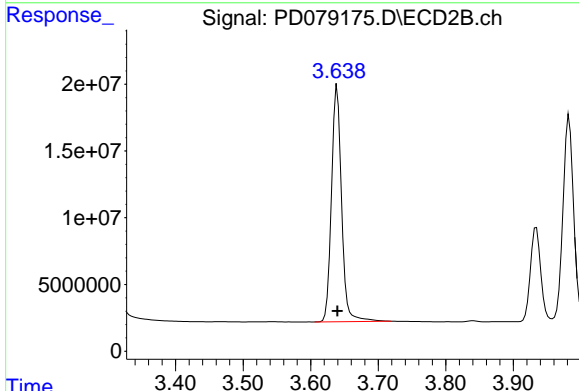
#2 alpha-BHC

R.T.: 3.309 min  
Delta R.T.: 0.000 min  
Response: 187842748  
Conc: 54.17 ng/ml

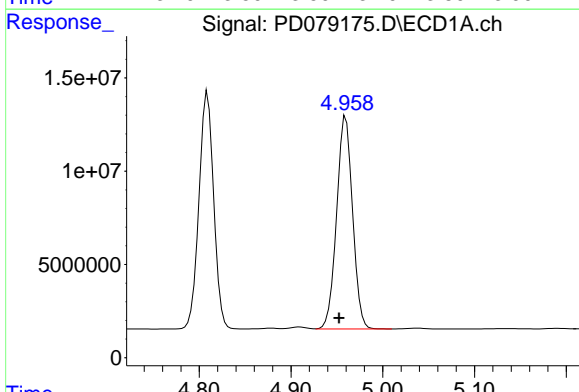


#3 gamma-BHC (Lindane)  
 R.T.: 4.367 min  
 Delta R.T.: 0.008 min  
 Response: 136897808  
 Conc: 52.68 ng/ml

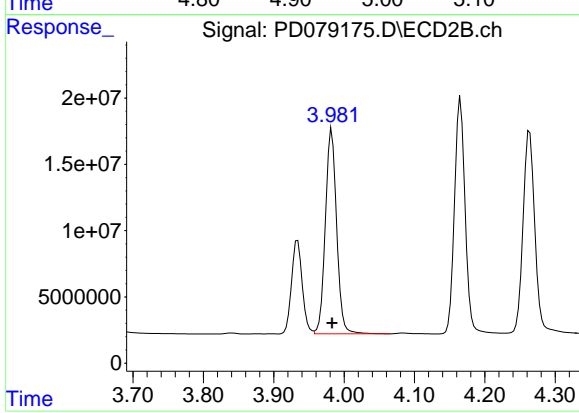
Instrument :  
 ECD\_D  
 ClientSampleId :  
 PSTDCCC050



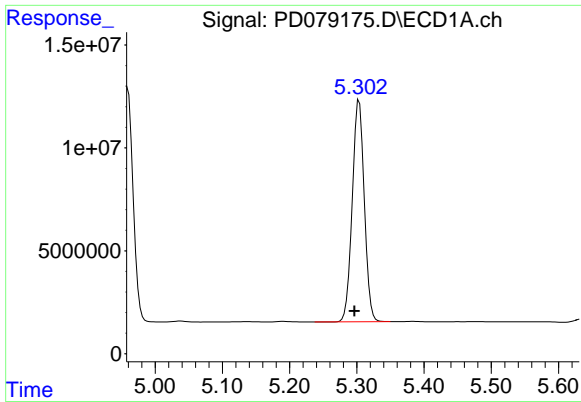
#3 gamma-BHC (Lindane)  
 R.T.: 3.639 min  
 Delta R.T.: 0.000 min  
 Response: 184426348  
 Conc: 54.31 ng/ml



#4 Heptachlor  
 R.T.: 4.960 min  
 Delta R.T.: 0.007 min  
 Response: 137652483  
 Conc: 51.46 ng/ml



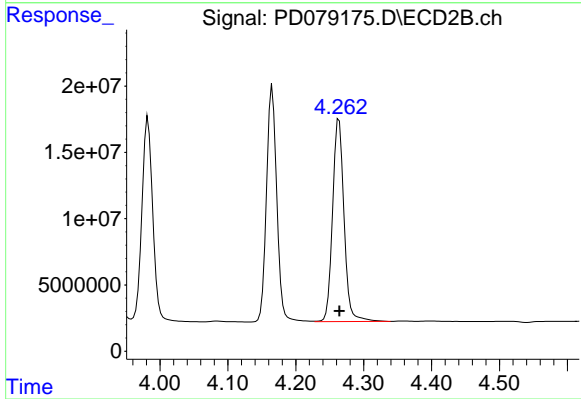
#4 Heptachlor  
 R.T.: 3.982 min  
 Delta R.T.: 0.000 min  
 Response: 171656200  
 Conc: 56.20 ng/ml



#5 Aldrin

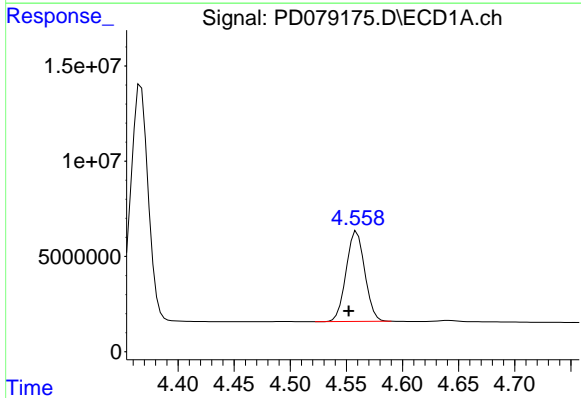
R.T.: 5.303 min  
 Delta R.T.: 0.007 min  
 Response: 133961058  
 Conc: 51.99 ng/ml

Instrument :  
 ECD\_D  
 ClientSampleId :  
 PSTDCCC050



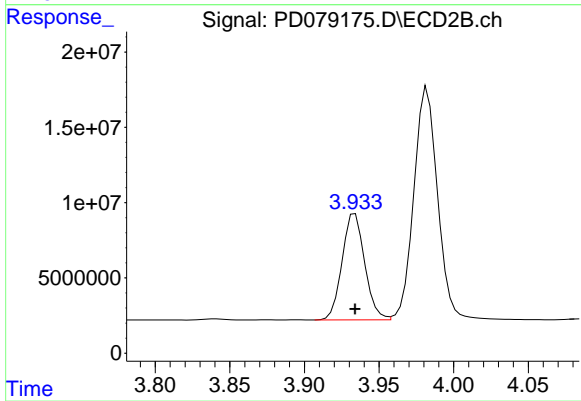
#5 Aldrin

R.T.: 4.264 min  
 Delta R.T.: 0.000 min  
 Response: 179471338  
 Conc: 54.86 ng/ml



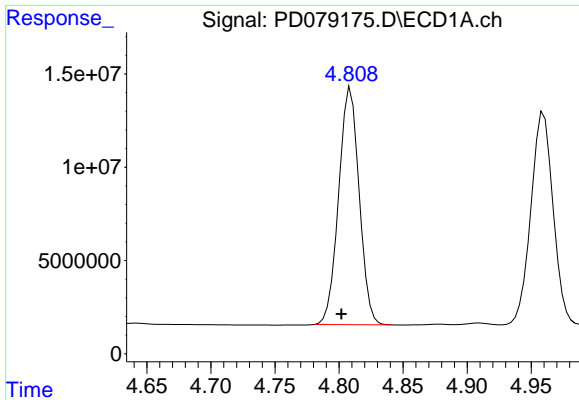
#6 beta-BHC

R.T.: 4.559 min  
 Delta R.T.: 0.007 min  
 Response: 54679105  
 Conc: 51.03 ng/ml



#6 beta-BHC

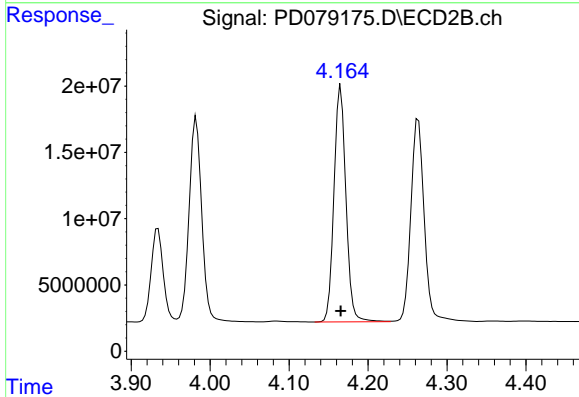
R.T.: 3.934 min  
 Delta R.T.: 0.000 min  
 Response: 74599971  
 Conc: 52.94 ng/ml



#7 delta-BHC

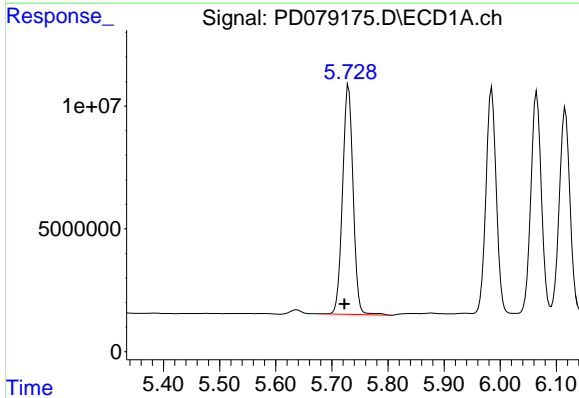
R.T.: 4.809 min  
 Delta R.T.: 0.007 min  
 Response: 141409541  
 Conc: 52.82 ng/ml

Instrument :  
 ECD\_D  
 ClientSampleId :  
 PSTDCCC050



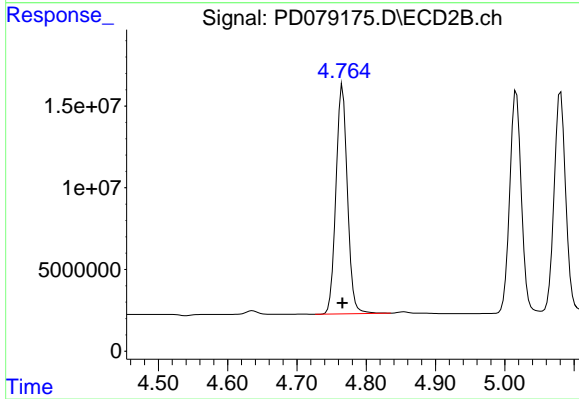
#7 delta-BHC

R.T.: 4.166 min  
 Delta R.T.: 0.000 min  
 Response: 187125719  
 Conc: 55.89 ng/ml



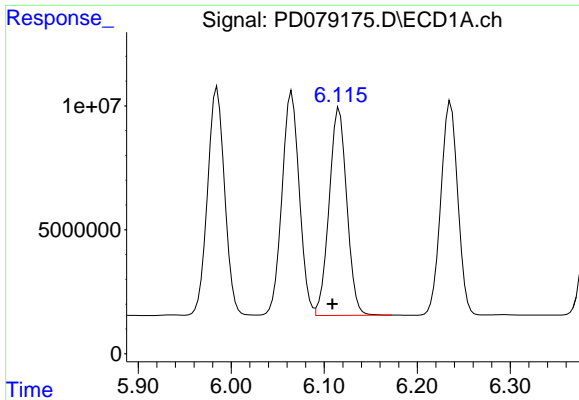
#8 Heptachlor epoxide

R.T.: 5.730 min  
 Delta R.T.: 0.008 min  
 Response: 122061885  
 Conc: 52.08 ng/ml



#8 Heptachlor epoxide

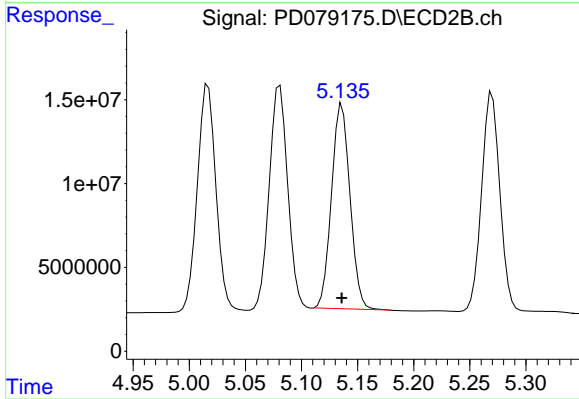
R.T.: 4.766 min  
 Delta R.T.: 0.000 min  
 Response: 160595587  
 Conc: 54.17 ng/ml



#9 Endosulfan I

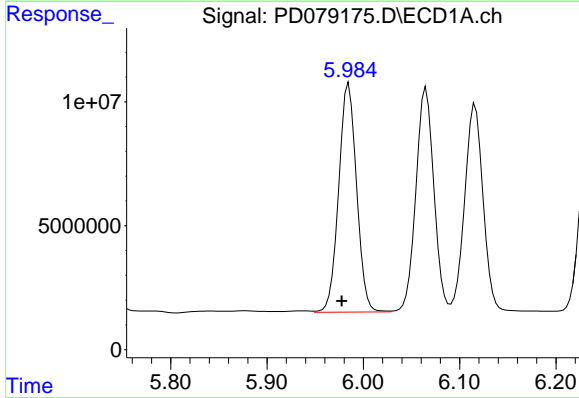
R.T.: 6.116 min  
 Delta R.T.: 0.007 min  
 Response: 110834057  
 Conc: 51.12 ng/ml

Instrument :  
 ECD\_D  
 ClientSampleId :  
 PSTDCCC050



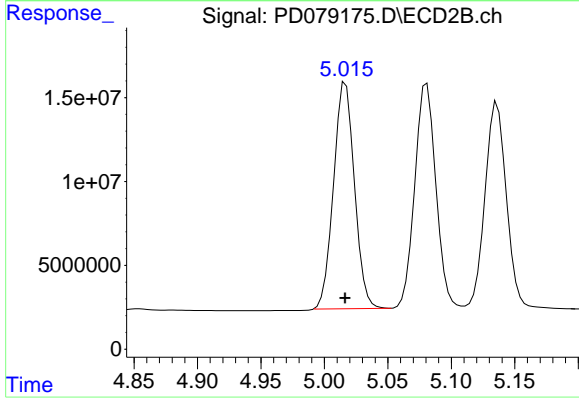
#9 Endosulfan I

R.T.: 5.136 min  
 Delta R.T.: 0.000 min  
 Response: 140237599  
 Conc: 52.97 ng/ml



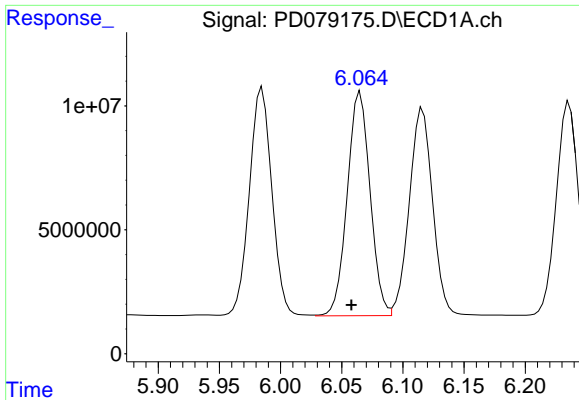
#10 gamma-Chlordane

R.T.: 5.985 min  
 Delta R.T.: 0.007 min  
 Response: 118792119  
 Conc: 51.81 ng/ml



#10 gamma-Chlordane

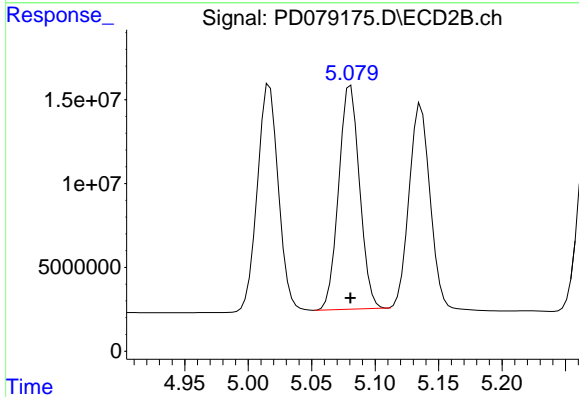
R.T.: 5.017 min  
 Delta R.T.: 0.000 min  
 Response: 154925816  
 Conc: 53.99 ng/ml



#11 alpha-Chlordane

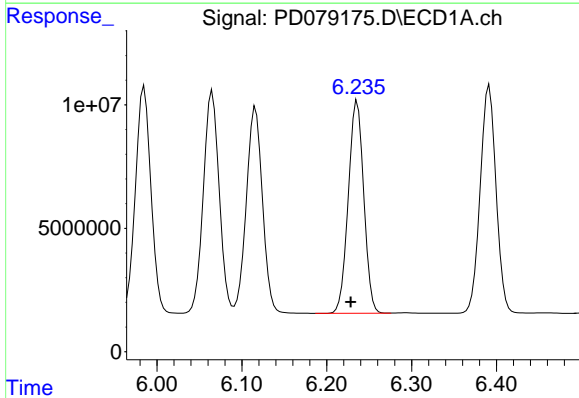
R.T.: 6.065 min  
 Delta R.T.: 0.007 min  
 Response: 117342179  
 Conc: 51.46 ng/ml

Instrument :  
 ECD\_D  
 ClientSampleId :  
 PSTDCCC050



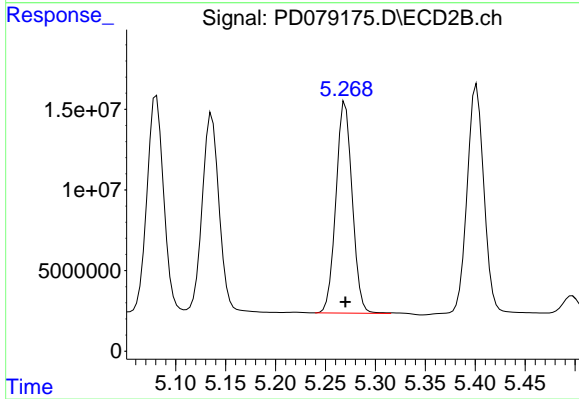
#11 alpha-Chlordane

R.T.: 5.081 min  
 Delta R.T.: 0.000 min  
 Response: 152812889  
 Conc: 53.25 ng/ml



#12 4,4'-DDE

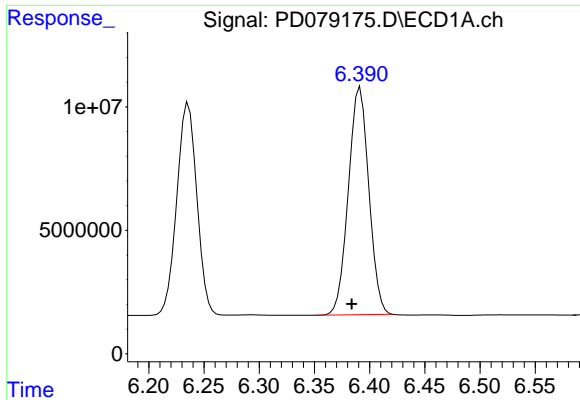
R.T.: 6.236 min  
 Delta R.T.: 0.008 min  
 Response: 108958242  
 Conc: 51.56 ng/ml



#12 4,4'-DDE

R.T.: 5.270 min  
 Delta R.T.: 0.000 min  
 Response: 148529625  
 Conc: 55.79 ng/ml

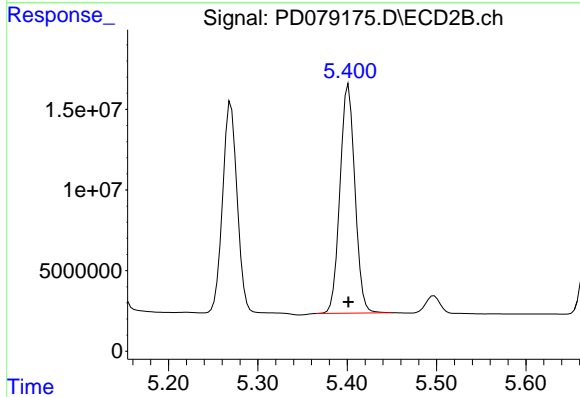




#13 Dieldrin

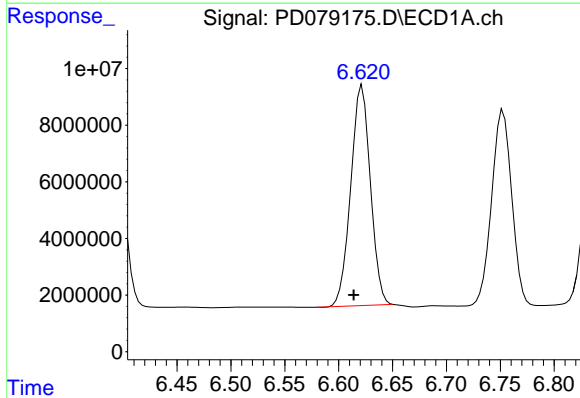
R.T.: 6.392 min  
 Delta R.T.: 0.008 min  
 Response: 118983048  
 Conc: 51.09 ng/ml

Instrument :  
 ECD\_D  
 ClientSampleId :  
 PSTDCCC050



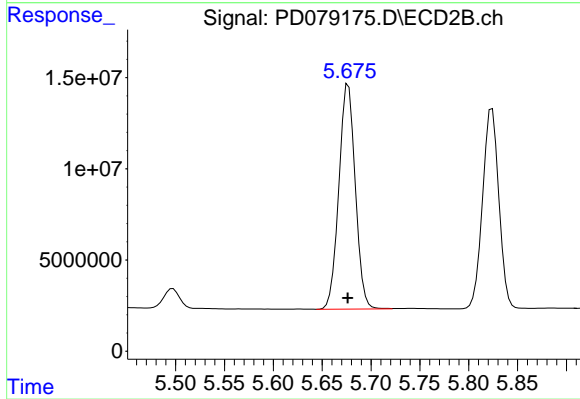
#13 Dieldrin

R.T.: 5.401 min  
 Delta R.T.: 0.000 min  
 Response: 164623714  
 Conc: 55.43 ng/ml



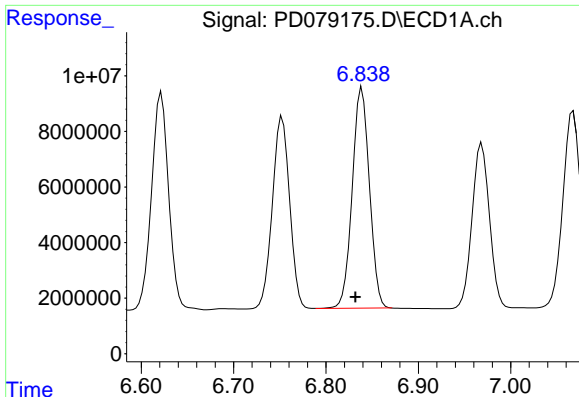
#14 Endrin

R.T.: 6.622 min  
 Delta R.T.: 0.008 min  
 Response: 98785573  
 Conc: 50.72 ng/ml



#14 Endrin

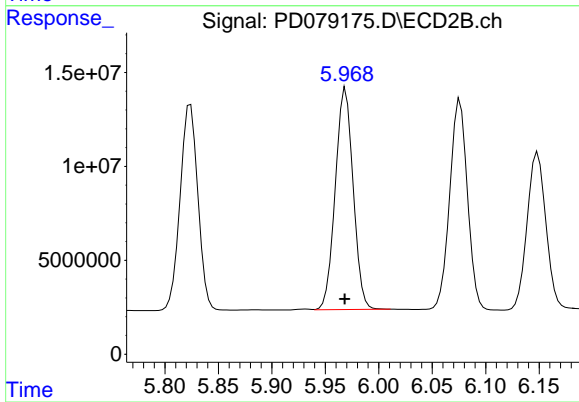
R.T.: 5.677 min  
 Delta R.T.: 0.000 min  
 Response: 144565479  
 Conc: 56.49 ng/ml



#15 Endosulfan II

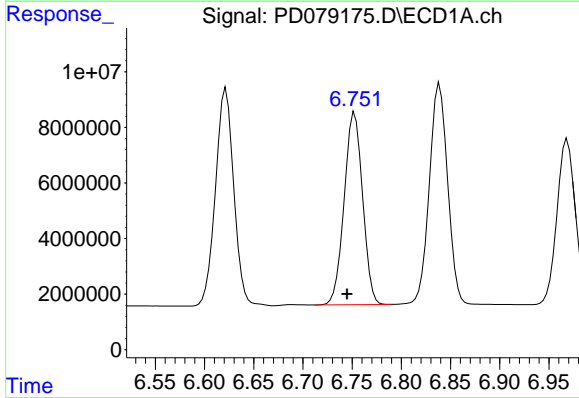
R.T.: 6.839 min  
 Delta R.T.: 0.007 min  
 Response: 102493813  
 Conc: 50.25 ng/ml

Instrument :  
 ECD\_D  
 ClientSampleId :  
 PSTDCCC050



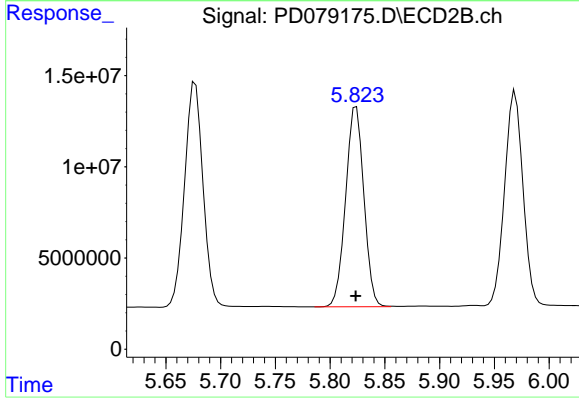
#15 Endosulfan II

R.T.: 5.969 min  
 Delta R.T.: 0.000 min  
 Response: 137117624  
 Conc: 54.92 ng/ml



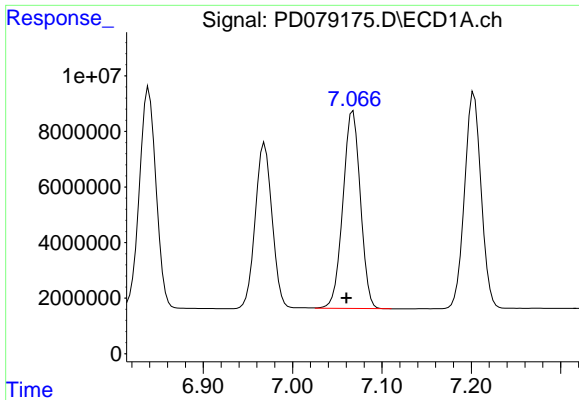
#16 4,4'-DDD

R.T.: 6.753 min  
 Delta R.T.: 0.008 min  
 Response: 90003259  
 Conc: 51.20 ng/ml



#16 4,4'-DDD

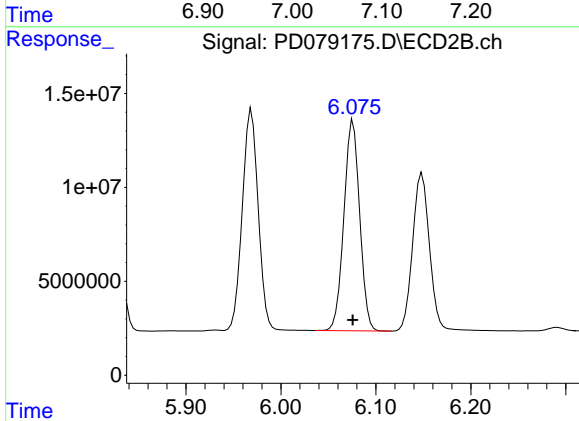
R.T.: 5.824 min  
 Delta R.T.: 0.000 min  
 Response: 127150833  
 Conc: 55.66 ng/ml



#17 4,4'-DDT

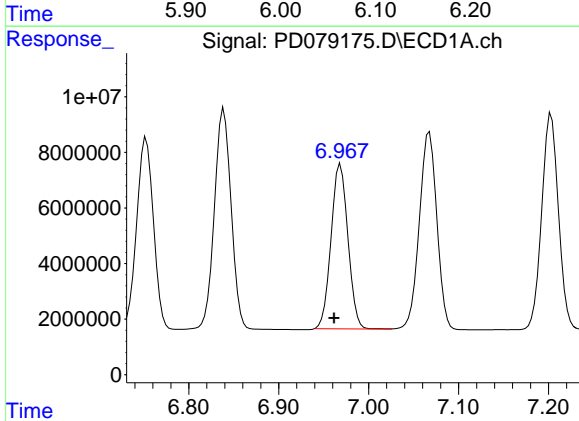
R.T.: 7.068 min  
 Delta R.T.: 0.008 min  
 Response: 96591907  
 Conc: 51.01 ng/ml

Instrument :  
 ECD\_D  
 ClientSampleId :  
 PSTDCCC050



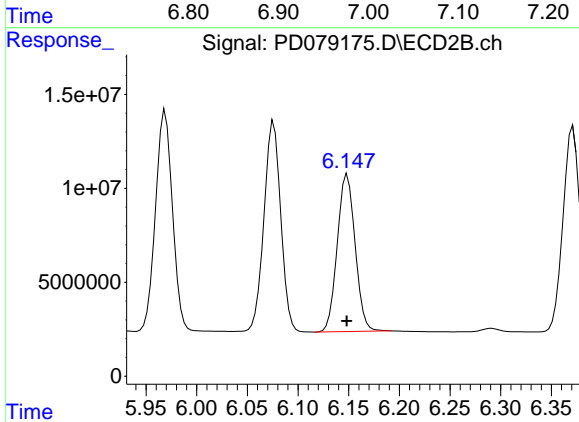
#17 4,4'-DDT

R.T.: 6.076 min  
 Delta R.T.: 0.000 min  
 Response: 129477716  
 Conc: 56.56 ng/ml



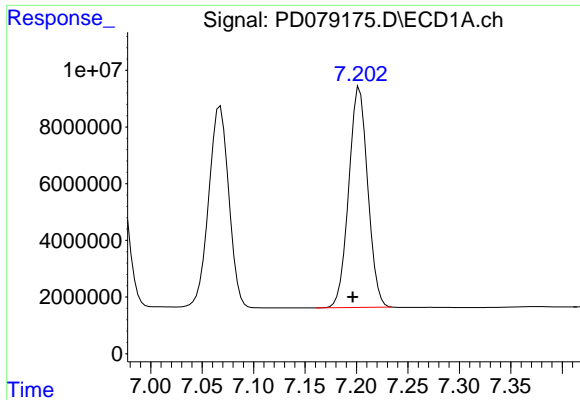
#18 Endrin aldehyde

R.T.: 6.969 min  
 Delta R.T.: 0.007 min  
 Response: 77469912  
 Conc: 50.16 ng/ml



#18 Endrin aldehyde

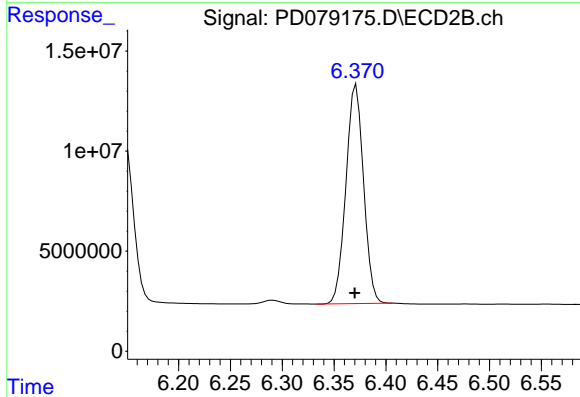
R.T.: 6.149 min  
 Delta R.T.: 0.000 min  
 Response: 102556828  
 Conc: 55.16 ng/ml



#19 Endosulfan Sulfate

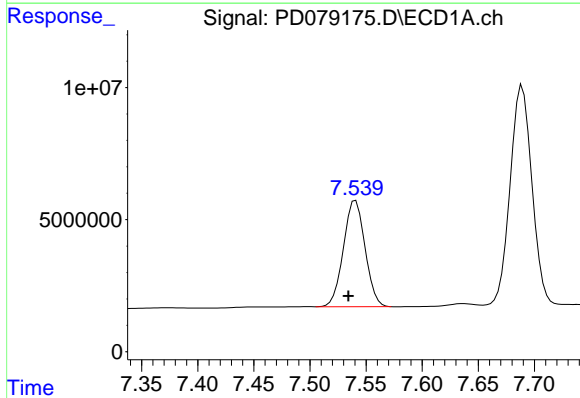
R.T.: 7.203 min  
 Delta R.T.: 0.007 min  
 Response: 99941496  
 Conc: 50.27 ng/ml

Instrument :  
 ECD\_D  
 ClientSampleId :  
 PSTDCCC050



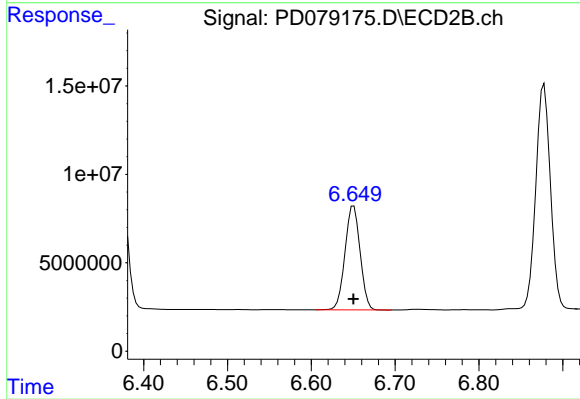
#19 Endosulfan Sulfate

R.T.: 6.371 min  
 Delta R.T.: 0.002 min  
 Response: 129283817  
 Conc: 55.37 ng/ml



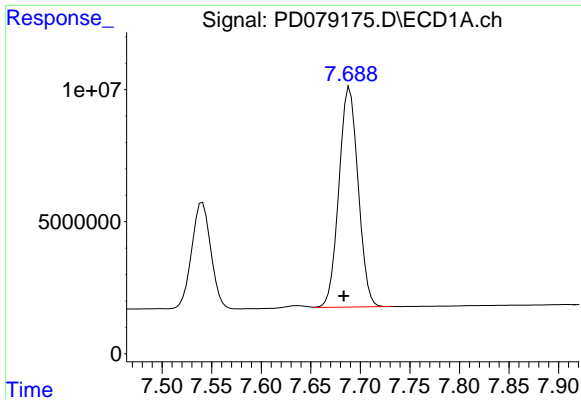
#20 Methoxychlor

R.T.: 7.541 min  
 Delta R.T.: 0.007 min  
 Response: 53923489  
 Conc: 49.21 ng/ml



#20 Methoxychlor

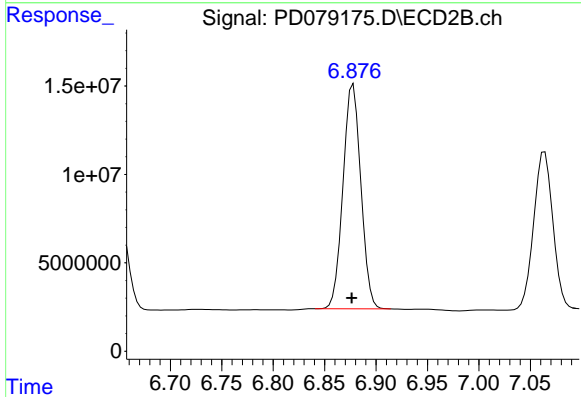
R.T.: 6.651 min  
 Delta R.T.: 0.000 min  
 Response: 73845083  
 Conc: 54.39 ng/ml



#21 Endrin ketone

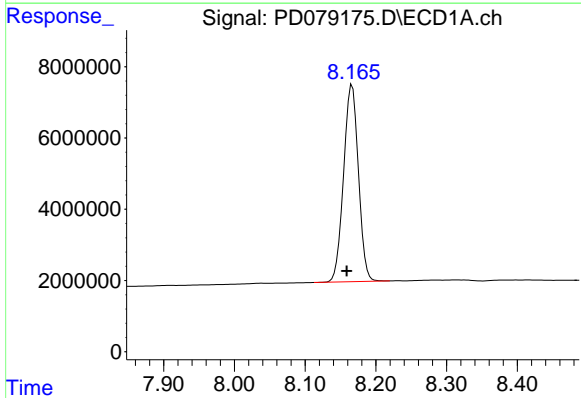
R.T.: 7.689 min  
 Delta R.T.: 0.006 min  
 Response: 112265597  
 Conc: 51.49 ng/ml

Instrument :  
 ECD\_D  
 ClientSampleId :  
 PSTDCCC050



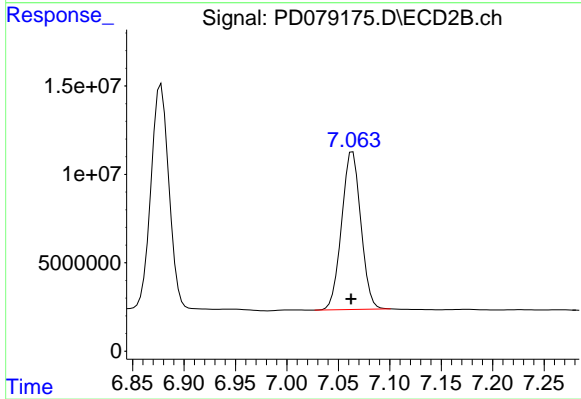
#21 Endrin ketone

R.T.: 6.878 min  
 Delta R.T.: 0.001 min  
 Response: 153457628  
 Conc: 54.89 ng/ml



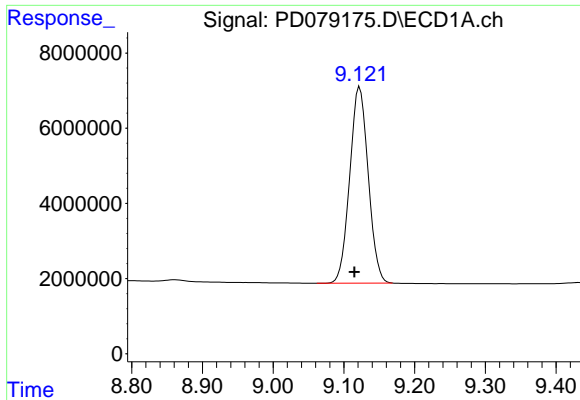
#22 Mirex

R.T.: 8.166 min  
 Delta R.T.: 0.008 min  
 Response: 80672206  
 Conc: 47.66 ng/ml



#22 Mirex

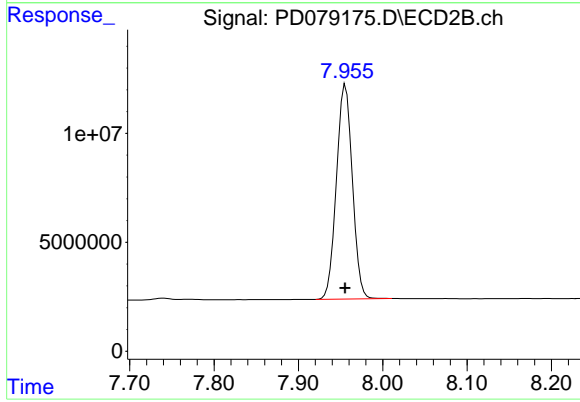
R.T.: 7.064 min  
 Delta R.T.: 0.002 min  
 Response: 116040942  
 Conc: 54.32 ng/ml



#28 Decachlorobiphenyl

R.T.: 9.122 min  
Delta R.T.: 0.008 min  
Response: 94958557  
Conc: 47.34 ng/ml

Instrument :  
ECD\_D  
ClientSampleId :  
PSTDCCC050



#28 Decachlorobiphenyl

R.T.: 7.956 min  
Delta R.T.: 0.000 min  
Response: 129525875  
Conc: 53.14 ng/ml