

Data Path : Z:\pestpcbsrv\HPCHEM1\ECD\_D\Data\PD102825\  
 Data File : PD090881.D  
 Signal(s) : Signal #1: ECD1A.ch Signal #2: ECD2B.ch  
 Acq On : 28 Oct 2025 14:35  
 Operator : AR\AJ  
 Sample : PB170283BL  
 Misc :  
 ALS Vial : 5 Sample Multiplier: 1

Instrument :  
 ECD\_D  
 ClientSampleId :  
 PB170283BL

Integration File signal 1: autoint1.e  
 Integration File signal 2: autoint2.e  
 Quant Time: Oct 29 01:43:41 2025  
 Quant Method : Z:\pestpcbsrv\HPCHEM1\ECD\_D\Method\PD101725.M  
 Quant Title : GC Extractables  
 QLast Update : Fri Oct 17 17:43:28 2025  
 Response via : Initial Calibration  
 Integrator: ChemStation

Volume Inj. : 1 µl  
 Signal #1 Phase : ZB-MR1 Signal #2 Phase: ZB-MR2  
 Signal #1 Info : 30M x 0.32mm x0.5 Signal #2 Info : 30M x 0.32mm x 0.25µm

Compound	RT#1	RT#2	Resp#1	Resp#2	ng/ml	ng/ml
System Monitoring Compounds						
1) SA Tetrachlo...	3.551	2.872	59925235	573.0E6	19.243	19.244
28) SA Decachlor...	9.073	8.060	95959461	673.0E6	20.513	22.217
Target Compounds						
2) A alpha-BHC	4.000	3.384	676870	6838283	0.094	0.134 #
3) MA gamma-BHC...	4.332	3.721	346705	5420658	0.051	0.115 #
4) MA Heptachlor	4.929	4.073	1778916	6354787	0.318	0.142 #
5) MB Aldrin	5.270	4.359	677651	4827208	0.104	0.104
6) B beta-BHC	4.520	4.018	953748	6029110	0.364	0.304
7) B delta-BHC	4.771	4.253	4311382	12302631	0.638	0.258 #
8) B Heptachlo...	5.687	4.863	2127775	8294668	0.368	0.195 #
9) A Endosulfan I	6.074	5.237	813248	5165305	0.147	0.131
10) B gamma-Chl...	5.945	5.113	648448	4641964	0.109	0.103
11) B alpha-Chl...	6.004f	5.180	6232547	6502582	1.008	0.151 #
12) B 4,4'-DDE	6.196	5.368	409516	4486953	0.077	0.102 #
13) MA Dieldrin	6.347	5.502	584973	3972684	0.100	0.090
14) MA Endrin	6.575	5.783	682449	12536625	0.138	0.310 #
15) B Endosulfa...	6.788	6.071	911392	9056462	0.182	0.241 #
16) A 4,4'-DDD	6.706	5.919	525333	6200284	0.130	0.170 #
17) MA 4,4'-DDT	7.023	6.173	483998	5196831	0.118	0.148 #
18) B Endrin al...	6.917	6.250	2025441	12334751	0.553	0.445
19) B Endosulfa...	7.151	6.472	989587	9347943	0.213	0.261
20) A Methoxychlor	7.497	6.743	561418	1940677	0.264	0.111 #
21) B Endrin ke...	7.631	6.982	1261501	7652774	0.260	0.203
22) Mirex	0.000	7.157f	0	5038745	N.D.	0.196 #
23) Chlordane-1	4.722	3.884	468890	372009	2.481	0.298 #
24) Chlordane-2	0.000	4.467	0	586133	N.D.	0.449 #
25) Chlordane-3	5.945	5.113	648448	4641964	0.850	1.193 #
26) Chlordane-4	6.004f	5.180	6232547	6502582	6.433	1.946 #
27) Chlordane-5	0.000	6.071	0	9056462	N.D.	6.136 #

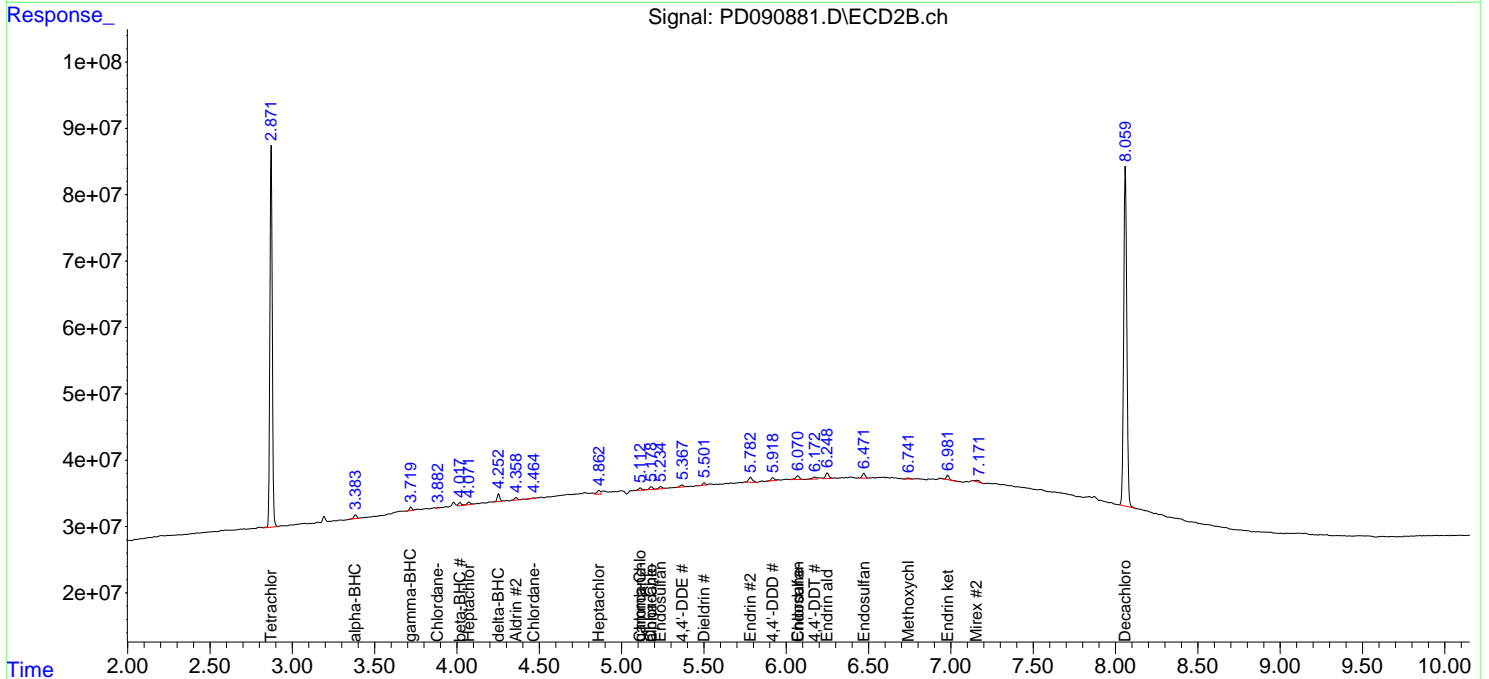
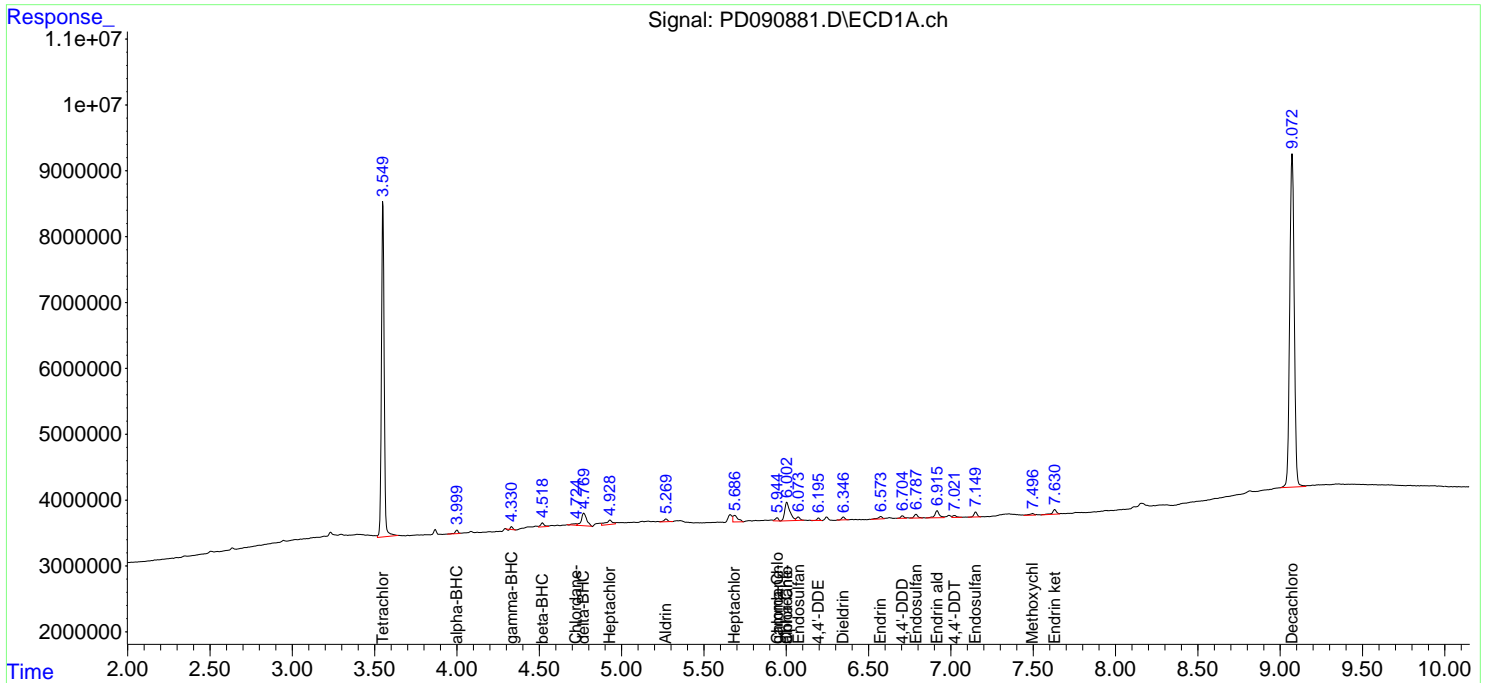
(f)=RT Delta > 1/2 Window (#)=Amounts differ by > 25% (m)=manual int.

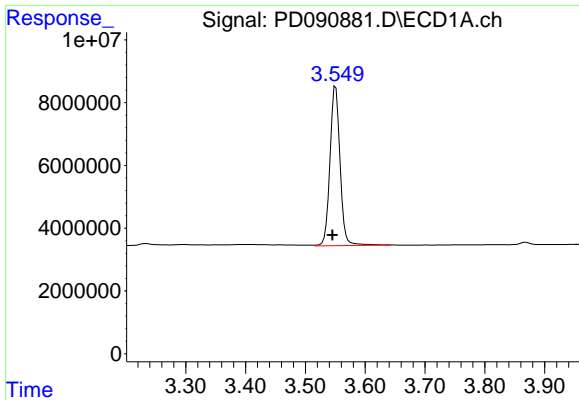
Data Path : Z:\pestpcbsrv\HPCHEM1\ECD\_D\Data\PD102825\  
 Data File : PD090881.D  
 Signal(s) : Signal #1: ECD1A.ch Signal #2: ECD2B.ch  
 Acq On : 28 Oct 2025 14:35  
 Operator : AR\AJ  
 Sample : PB170283BL  
 Misc :  
 ALS Vial : 5 Sample Multiplier: 1

Instrument :  
 ECD\_D  
 ClientSampleId :  
 PB170283BL

Integration File signal 1: autoint1.e  
 Integration File signal 2: autoint2.e  
 Quant Time: Oct 29 01:43:41 2025  
 Quant Method : Z:\pestpcbsrv\HPCHEM1\ECD\_D\Method\PD101725.M  
 Quant Title : GC Extractables  
 QLast Update : Fri Oct 17 17:43:28 2025  
 Response via : Initial Calibration  
 Integrator: ChemStation

Volume Inj. : 1 µl  
 Signal #1 Phase : ZB-MR1 Signal #2 Phase: ZB-MR2  
 Signal #1 Info : 30M x 0.32mm x0.5 Signal #2 Info : 30M x 0.32mm x 0.25µm



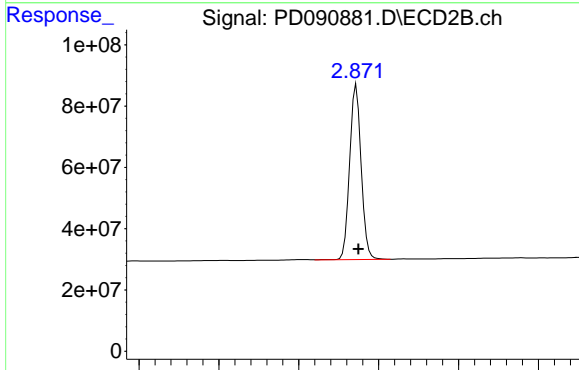


#1 Tetrachloro-m-xylene

R.T.: 3.551 min  
 Delta R.T.: 0.006 min  
 Response: 59925235  
 Conc: 19.24 ng/ml

Instrument :  
 ECD\_D  
 ClientSampleId :  
 PB170283BL

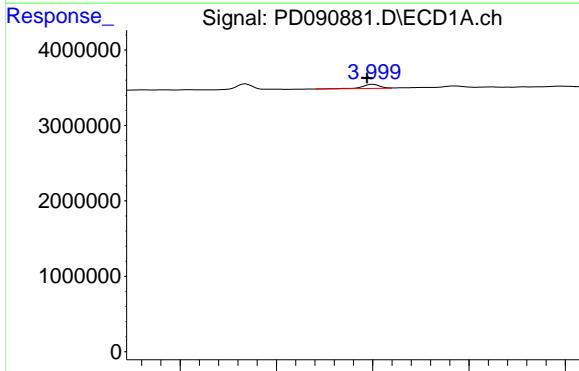
Time 3.30 3.40 3.50 3.60 3.70 3.80 3.90



#1 Tetrachloro-m-xylene

R.T.: 2.872 min  
 Delta R.T.: -0.003 min  
 Response: 573030342  
 Conc: 19.24 ng/ml

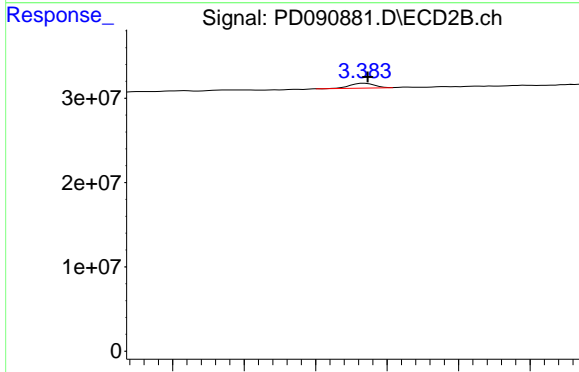
Time 2.60 2.70 2.80 2.90 3.00 3.10



#2 alpha-BHC

R.T.: 4.000 min  
 Delta R.T.: 0.006 min  
 Response: 676870  
 Conc: 0.09 ng/ml

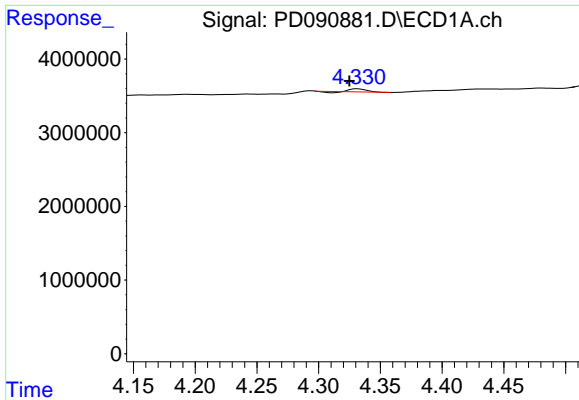
Time 3.80 3.90 4.00 4.10



#2 alpha-BHC

R.T.: 3.384 min  
 Delta R.T.: -0.002 min  
 Response: 6838283  
 Conc: 0.13 ng/ml

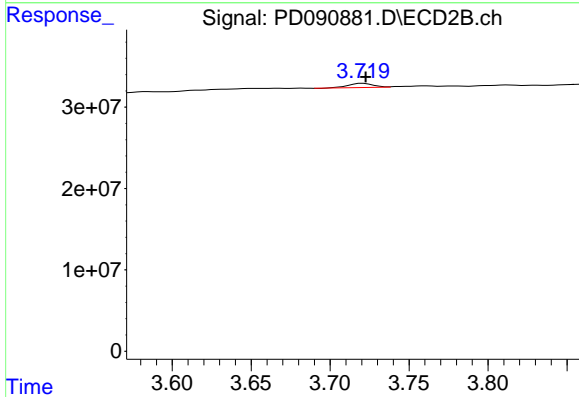
Time 3.25 3.30 3.35 3.40 3.45 3.50



#3 gamma-BHC (Lindane)

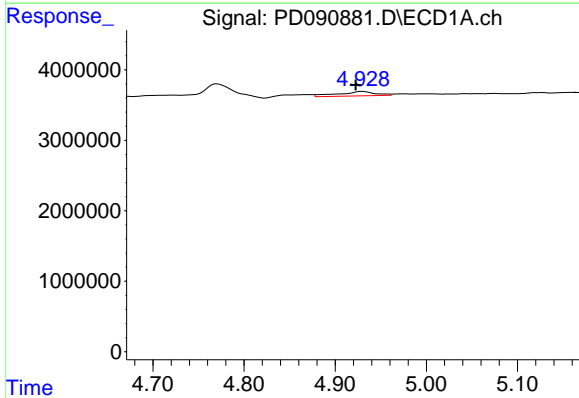
R.T.: 4.332 min  
 Delta R.T.: 0.007 min  
 Response: 346705  
 Conc: 0.05 ng/ml

Instrument :  
 ECD\_D  
 ClientSampleId :  
 PB170283BL



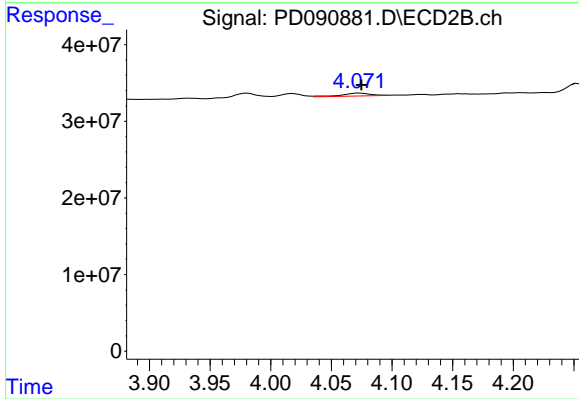
#3 gamma-BHC (Lindane)

R.T.: 3.721 min  
 Delta R.T.: -0.002 min  
 Response: 5420658  
 Conc: 0.11 ng/ml



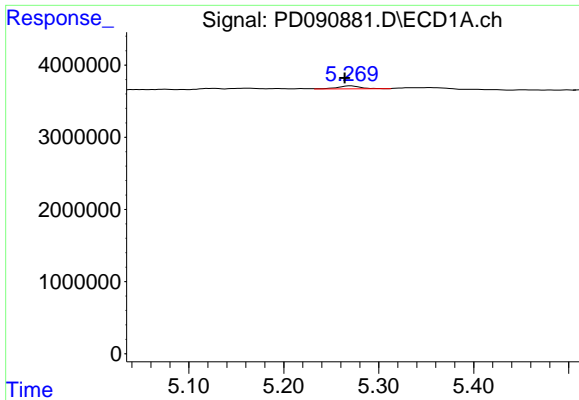
#4 Heptachlor

R.T.: 4.929 min  
 Delta R.T.: 0.007 min  
 Response: 1778916  
 Conc: 0.32 ng/ml



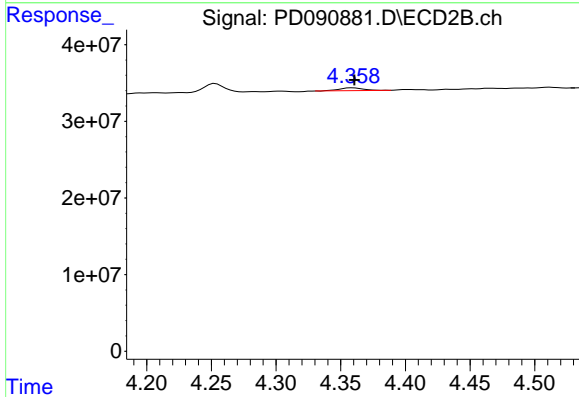
#4 Heptachlor

R.T.: 4.073 min  
 Delta R.T.: -0.001 min  
 Response: 6354787  
 Conc: 0.14 ng/ml

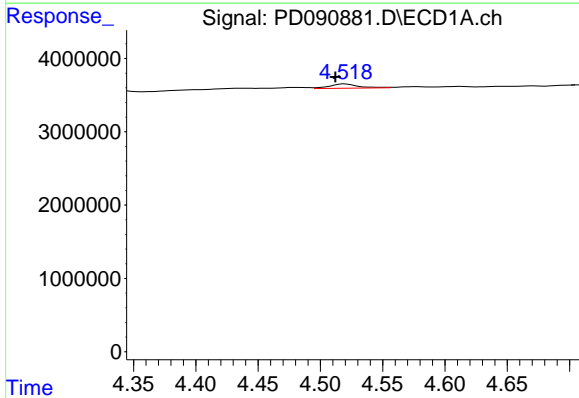


#5 Aldrin  
 R.T.: 5.270 min  
 Delta R.T.: 0.006 min  
 Response: 677651  
 Conc: 0.10 ng/ml

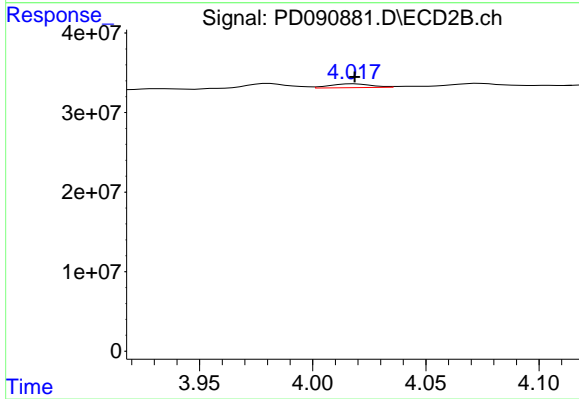
Instrument :  
 ECD\_D  
 ClientSampleId :  
 PB170283BL



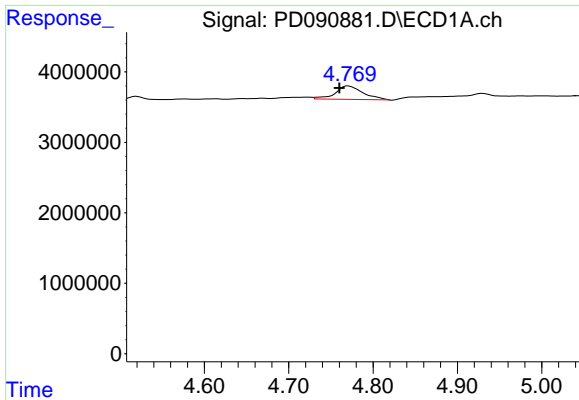
#5 Aldrin  
 R.T.: 4.359 min  
 Delta R.T.: -0.001 min  
 Response: 4827208  
 Conc: 0.10 ng/ml



#6 beta-BHC  
 R.T.: 4.520 min  
 Delta R.T.: 0.008 min  
 Response: 953748  
 Conc: 0.36 ng/ml



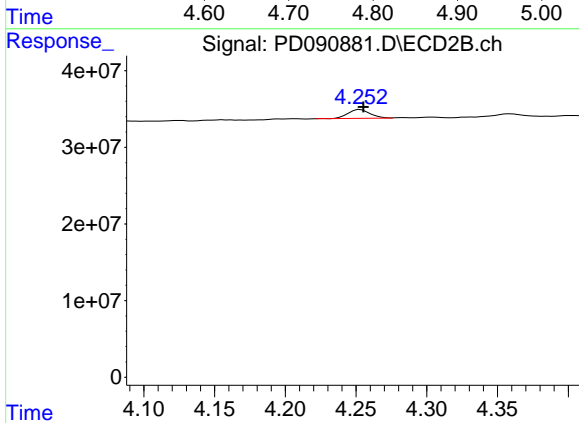
#6 beta-BHC  
 R.T.: 4.018 min  
 Delta R.T.: 0.000 min  
 Response: 6029110  
 Conc: 0.30 ng/ml



#7 delta-BHC

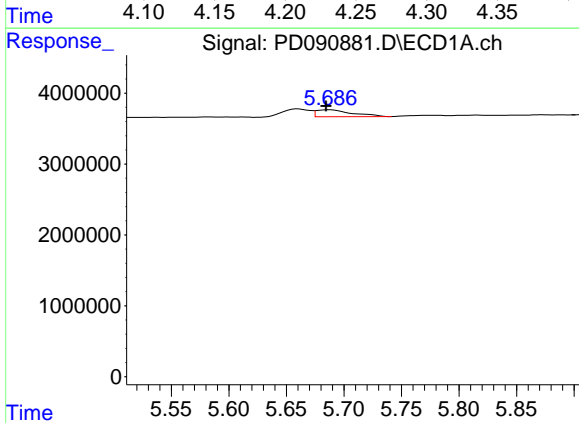
R.T.: 4.771 min  
 Delta R.T.: 0.010 min  
 Response: 4311382  
 Conc: 0.64 ng/ml

Instrument :  
 ECD\_D  
 ClientSampleId :  
 PB170283BL



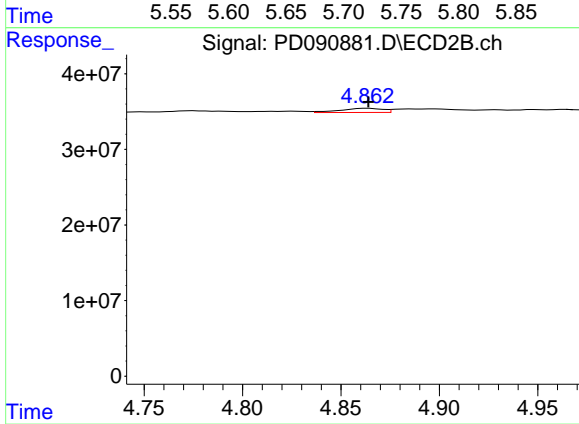
#7 delta-BHC

R.T.: 4.253 min  
 Delta R.T.: -0.002 min  
 Response: 12302631  
 Conc: 0.26 ng/ml



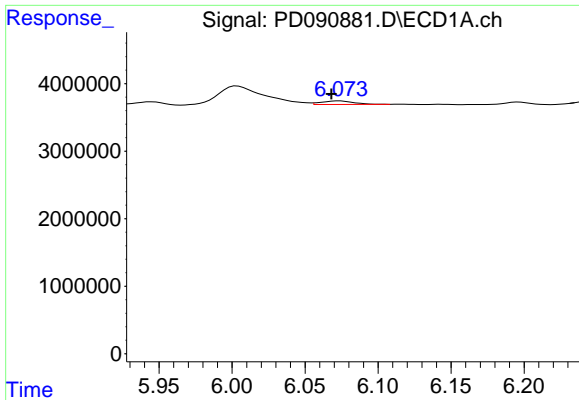
#8 Heptachlor epoxide

R.T.: 5.687 min  
 Delta R.T.: 0.003 min  
 Response: 2127775  
 Conc: 0.37 ng/ml



#8 Heptachlor epoxide

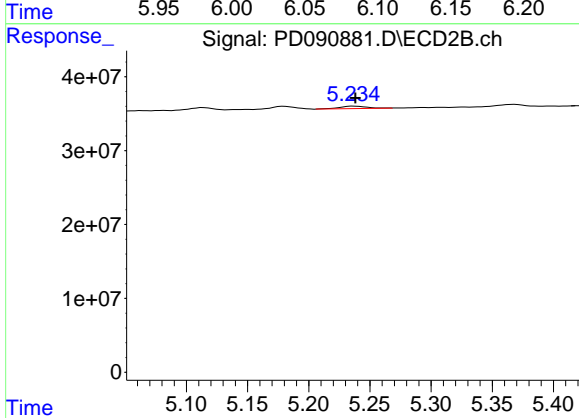
R.T.: 4.863 min  
 Delta R.T.: 0.000 min  
 Response: 8294668  
 Conc: 0.19 ng/ml



#9 Endosulfan I

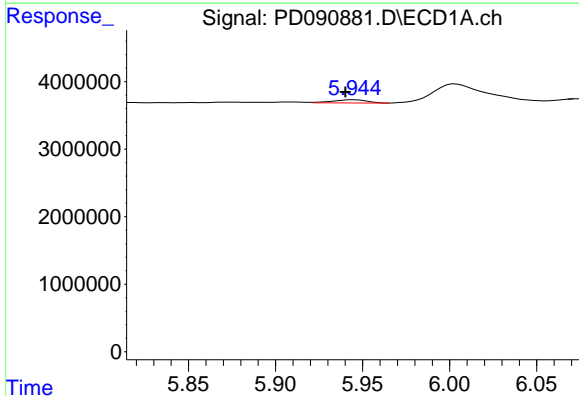
R.T.: 6.074 min  
 Delta R.T.: 0.006 min  
 Response: 813248  
 Conc: 0.15 ng/ml

Instrument :  
 ECD\_D  
 ClientSampleId :  
 PB170283BL



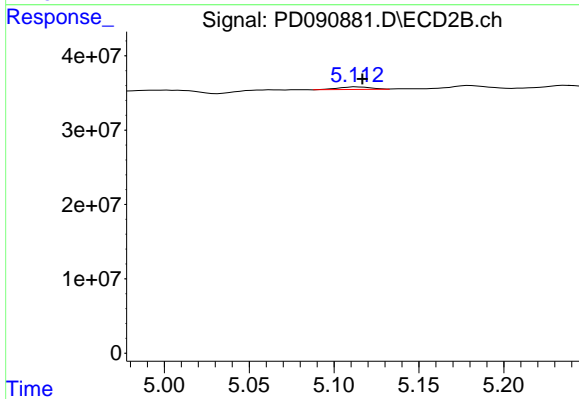
#9 Endosulfan I

R.T.: 5.237 min  
 Delta R.T.: -0.001 min  
 Response: 5165305  
 Conc: 0.13 ng/ml



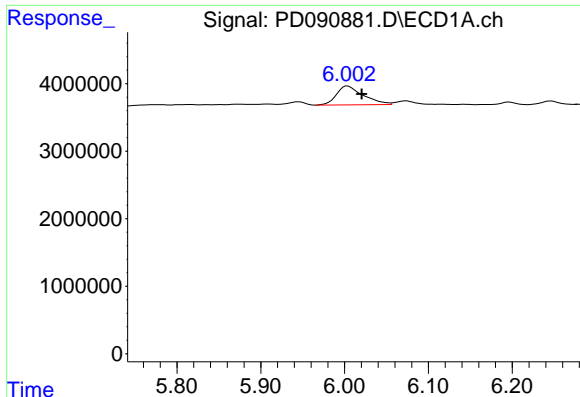
#10 gamma-Chlordane

R.T.: 5.945 min  
 Delta R.T.: 0.005 min  
 Response: 648448  
 Conc: 0.11 ng/ml



#10 gamma-Chlordane

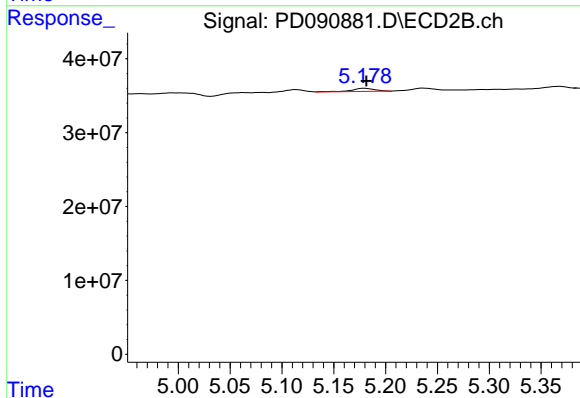
R.T.: 5.113 min  
 Delta R.T.: -0.003 min  
 Response: 4641964  
 Conc: 0.10 ng/ml



#11 alpha-Chlordane

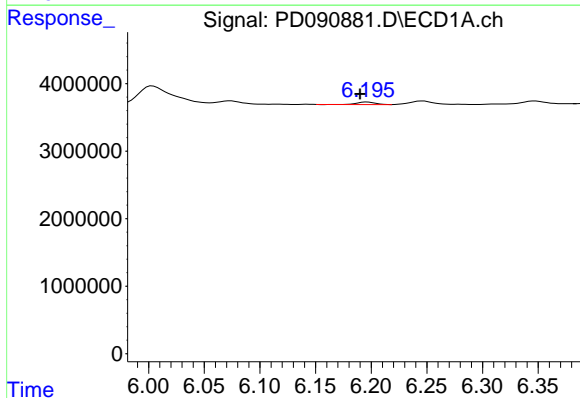
R.T.: 6.004 min  
 Delta R.T.: -0.017 min  
 Response: 6232547  
 Conc: 1.01 ng/ml

Instrument :  
 ECD\_D  
 ClientSampleId :  
 PB170283BL



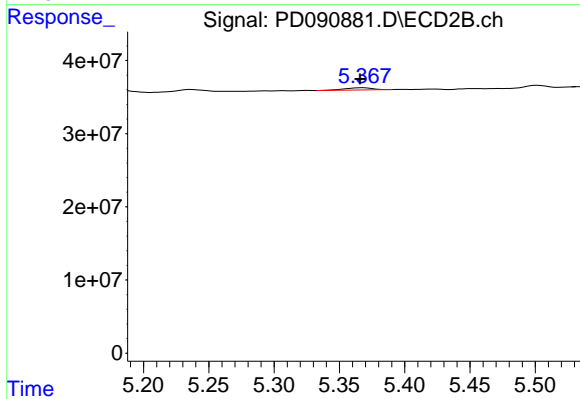
#11 alpha-Chlordane

R.T.: 5.180 min  
 Delta R.T.: -0.002 min  
 Response: 6502582  
 Conc: 0.15 ng/ml



#12 4,4'-DDE

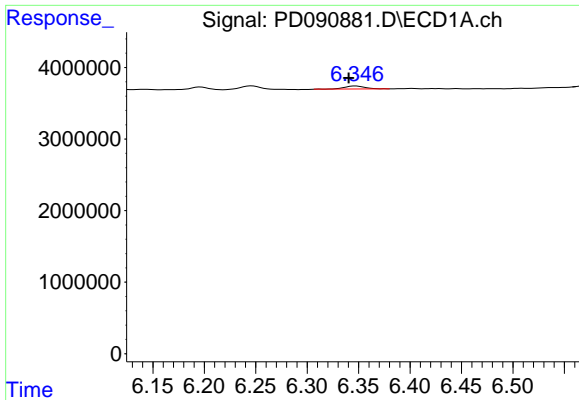
R.T.: 6.196 min  
 Delta R.T.: 0.006 min  
 Response: 409516  
 Conc: 0.08 ng/ml



#12 4,4'-DDE

R.T.: 5.368 min  
 Delta R.T.: 0.003 min  
 Response: 4486953  
 Conc: 0.10 ng/ml

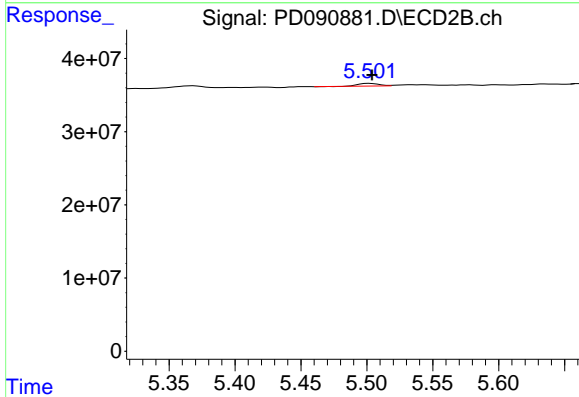




#13 Dieldrin

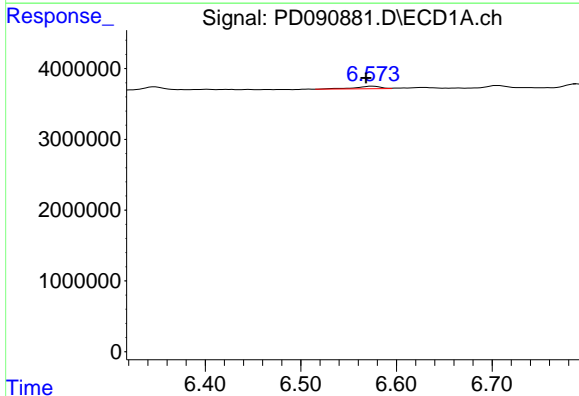
R.T.: 6.347 min  
 Delta R.T.: 0.007 min  
 Response: 584973  
 Conc: 0.10 ng/ml

Instrument :  
 ECD\_D  
 ClientSampleId :  
 PB170283BL



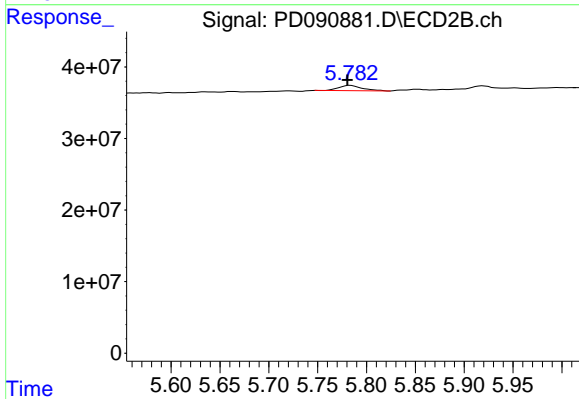
#13 Dieldrin

R.T.: 5.502 min  
 Delta R.T.: -0.002 min  
 Response: 3972684  
 Conc: 0.09 ng/ml



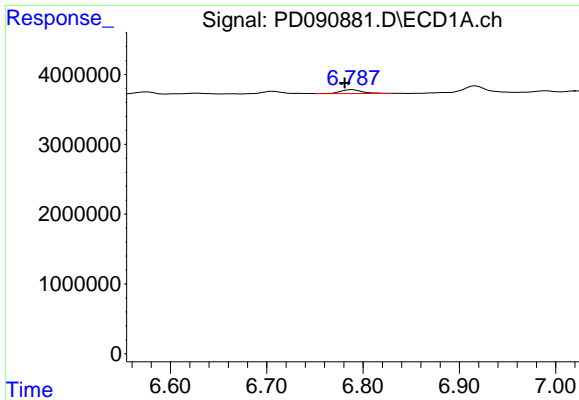
#14 Endrin

R.T.: 6.575 min  
 Delta R.T.: 0.006 min  
 Response: 682449  
 Conc: 0.14 ng/ml



#14 Endrin

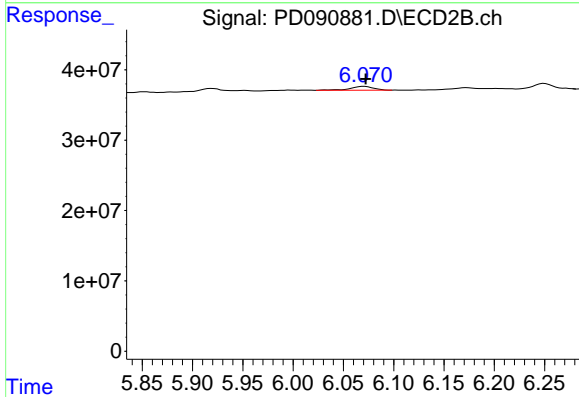
R.T.: 5.783 min  
 Delta R.T.: 0.003 min  
 Response: 12536625  
 Conc: 0.31 ng/ml



#15 Endosulfan II

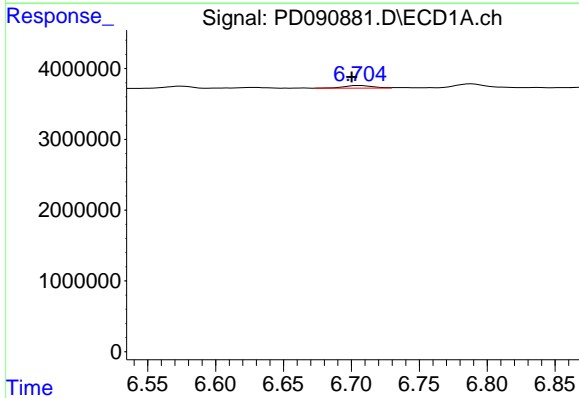
R.T.: 6.788 min  
 Delta R.T.: 0.008 min  
 Response: 911392  
 Conc: 0.18 ng/ml

Instrument :  
 ECD\_D  
 ClientSampleId :  
 PB170283BL



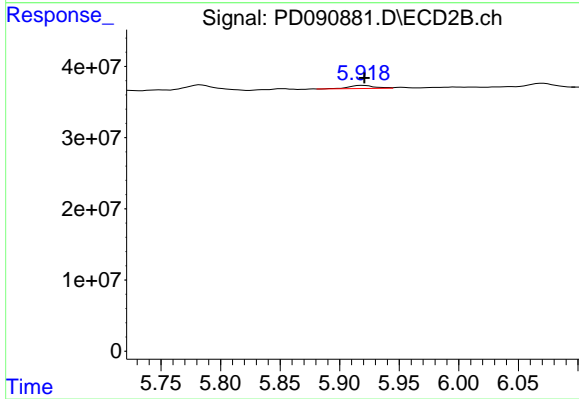
#15 Endosulfan II

R.T.: 6.071 min  
 Delta R.T.: -0.001 min  
 Response: 9056462  
 Conc: 0.24 ng/ml



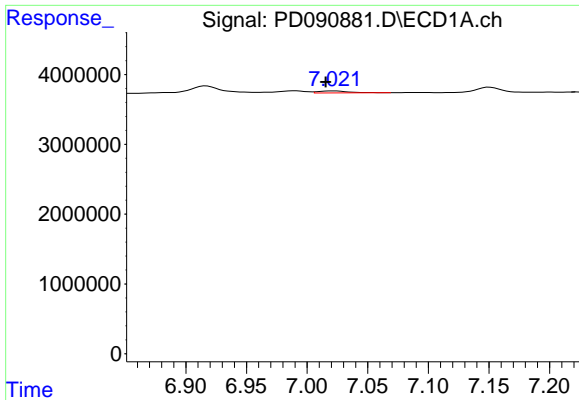
#16 4,4'-DDD

R.T.: 6.706 min  
 Delta R.T.: 0.006 min  
 Response: 525333  
 Conc: 0.13 ng/ml



#16 4,4'-DDD

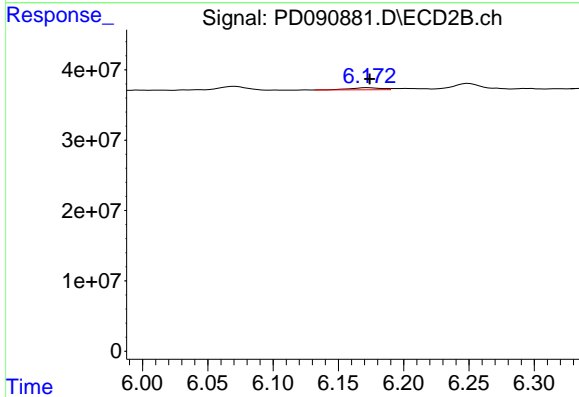
R.T.: 5.919 min  
 Delta R.T.: -0.002 min  
 Response: 6200284  
 Conc: 0.17 ng/ml



#17 4,4'-DDT

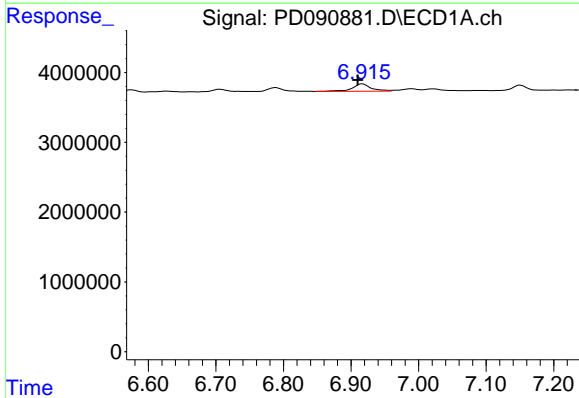
R.T.: 7.023 min  
 Delta R.T.: 0.007 min  
 Response: 483998  
 Conc: 0.12 ng/ml

Instrument :  
 ECD\_D  
 ClientSampleId :  
 PB170283BL



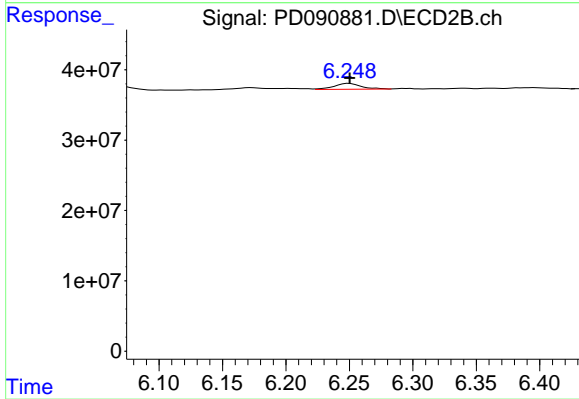
#17 4,4'-DDT

R.T.: 6.173 min  
 Delta R.T.: 0.000 min  
 Response: 5196831  
 Conc: 0.15 ng/ml



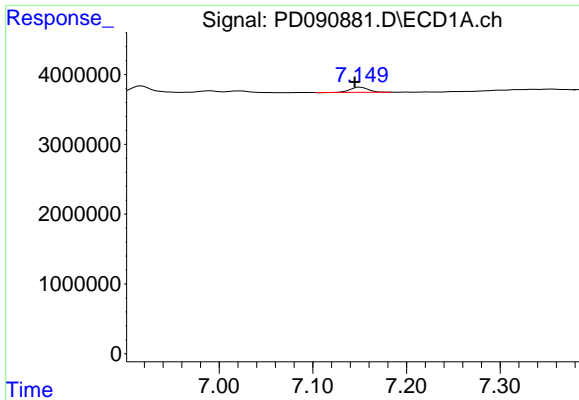
#18 Endrin aldehyde

R.T.: 6.917 min  
 Delta R.T.: 0.007 min  
 Response: 2025441  
 Conc: 0.55 ng/ml



#18 Endrin aldehyde

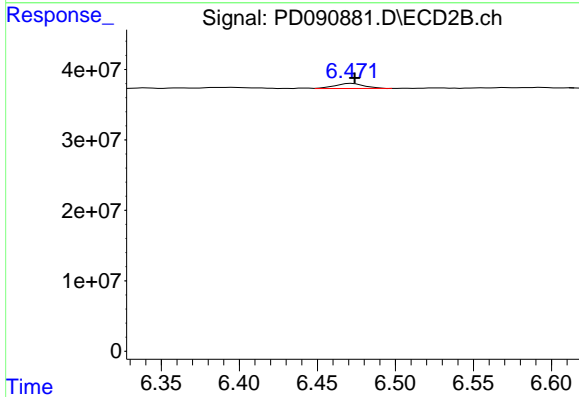
R.T.: 6.250 min  
 Delta R.T.: 0.000 min  
 Response: 12334751  
 Conc: 0.45 ng/ml



#19 Endosulfan Sulfate

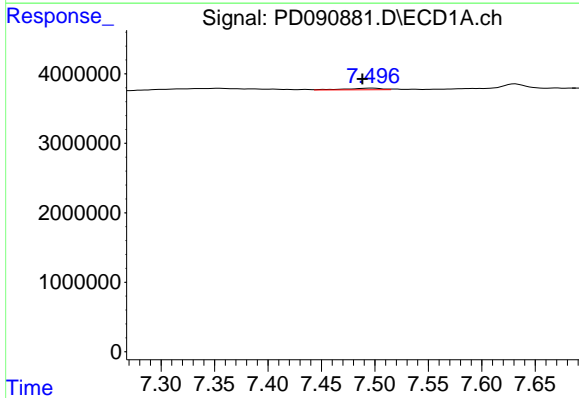
R.T.: 7.151 min  
 Delta R.T.: 0.006 min  
 Response: 989587  
 Conc: 0.21 ng/ml

Instrument :  
 ECD\_D  
 ClientSampleId :  
 PB170283BL



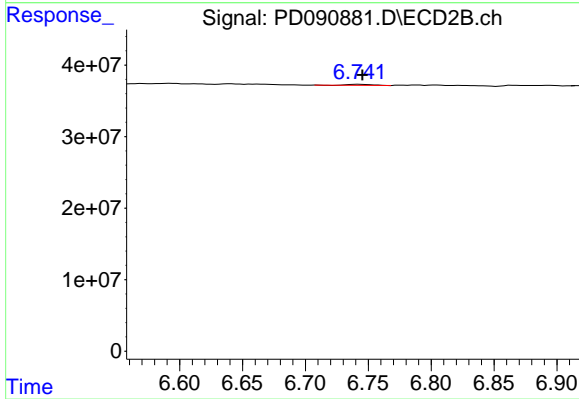
#19 Endosulfan Sulfate

R.T.: 6.472 min  
 Delta R.T.: -0.002 min  
 Response: 9347943  
 Conc: 0.26 ng/ml



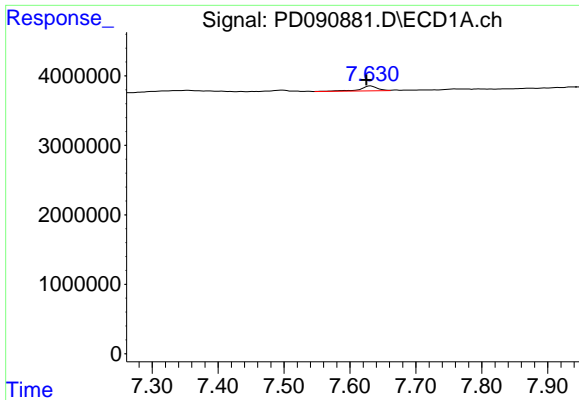
#20 Methoxychlor

R.T.: 7.497 min  
 Delta R.T.: 0.009 min  
 Response: 561418  
 Conc: 0.26 ng/ml



#20 Methoxychlor

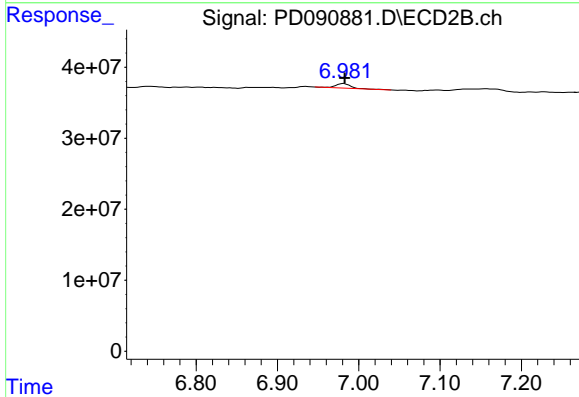
R.T.: 6.743 min  
 Delta R.T.: -0.002 min  
 Response: 1940677  
 Conc: 0.11 ng/ml



#21 Endrin ketone

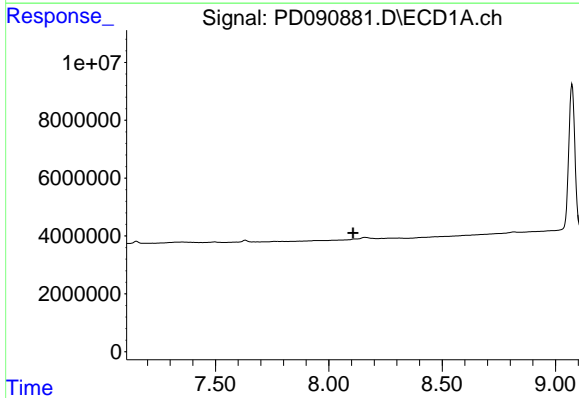
R.T.: 7.631 min  
 Delta R.T.: 0.006 min  
 Response: 1261501  
 Conc: 0.26 ng/ml

Instrument :  
 ECD\_D  
 ClientSampleId :  
 PB170283BL



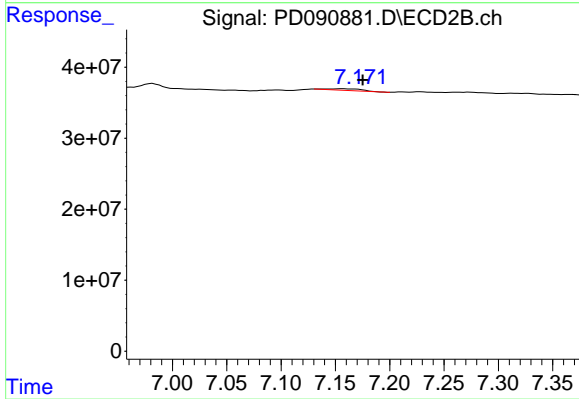
#21 Endrin ketone

R.T.: 6.982 min  
 Delta R.T.: 0.000 min  
 Response: 7652774  
 Conc: 0.20 ng/ml



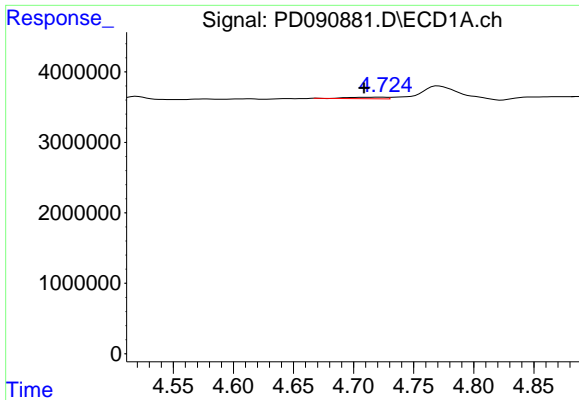
#22 Mirex

R.T.: 0.000 min  
 Exp R.T. : 8.107 min  
 Response: 0  
 Conc: N.D.



#22 Mirex

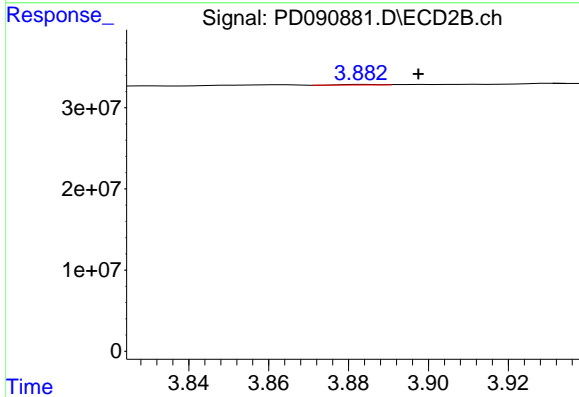
R.T.: 7.157 min  
 Delta R.T.: -0.019 min  
 Response: 5038745  
 Conc: 0.20 ng/ml



#23 Chlordane-1

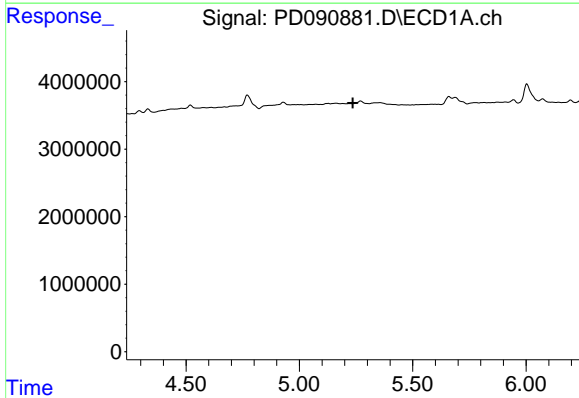
R.T.: 4.722 min  
 Delta R.T.: 0.013 min  
 Response: 468890  
 Conc: 2.48 ng/ml

Instrument :  
 ECD\_D  
 ClientSampleId :  
 PB170283BL



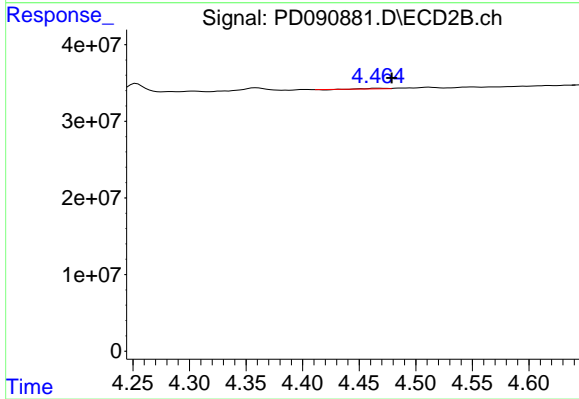
#23 Chlordane-1

R.T.: 3.884 min  
 Delta R.T.: -0.013 min  
 Response: 372009  
 Conc: 0.30 ng/ml



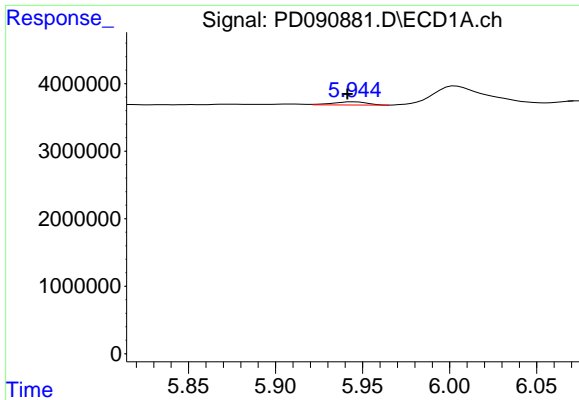
#24 Chlordane-2

R.T.: 0.000 min  
 Exp R.T. : 5.236 min  
 Response: 0  
 Conc: N.D.



#24 Chlordane-2

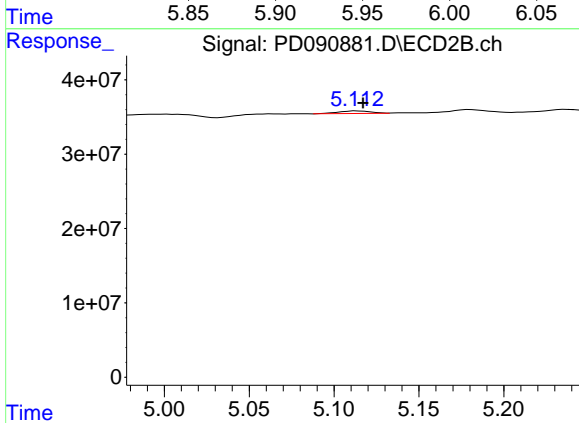
R.T.: 4.467 min  
 Delta R.T.: -0.012 min  
 Response: 586133  
 Conc: 0.45 ng/ml



#25 Chlordane-3

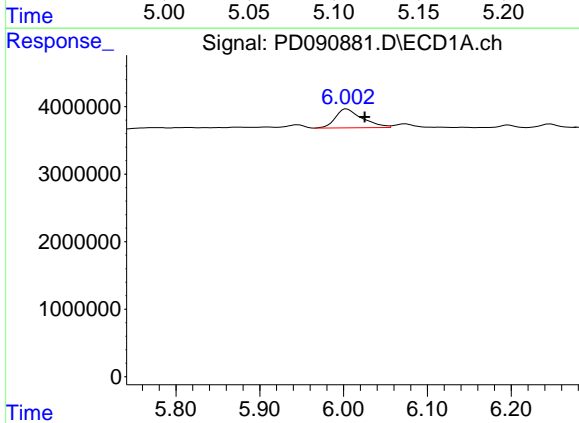
R.T.: 5.945 min  
 Delta R.T.: 0.004 min  
 Response: 648448  
 Conc: 0.85 ng/ml

Instrument :  
 ECD\_D  
 ClientSampleId :  
 PB170283BL



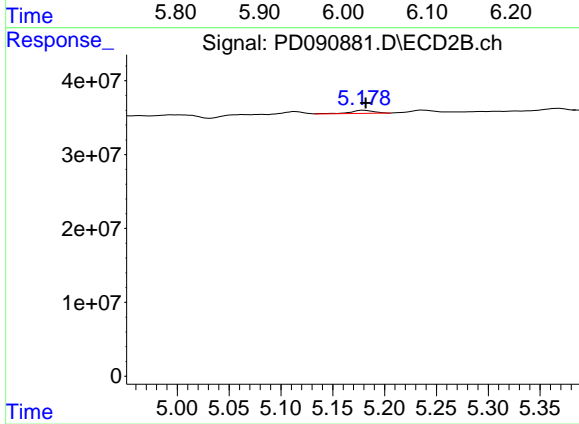
#25 Chlordane-3

R.T.: 5.113 min  
 Delta R.T.: -0.004 min  
 Response: 4641964  
 Conc: 1.19 ng/ml



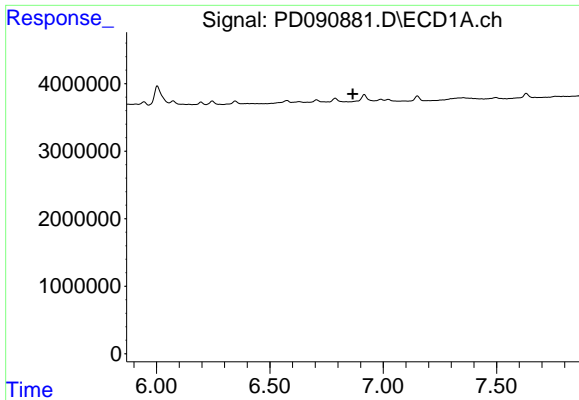
#26 Chlordane-4

R.T.: 6.004 min  
 Delta R.T.: -0.022 min  
 Response: 6232547  
 Conc: 6.43 ng/ml



#26 Chlordane-4

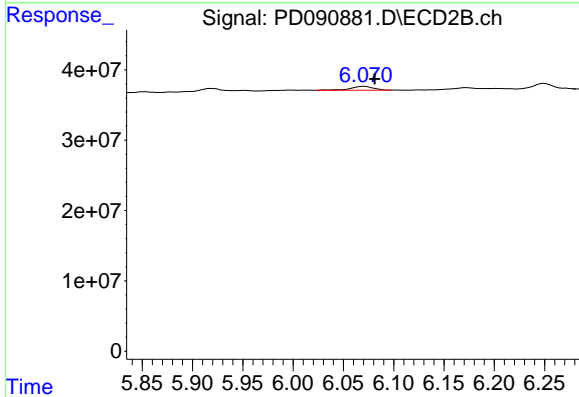
R.T.: 5.180 min  
 Delta R.T.: -0.002 min  
 Response: 6502582  
 Conc: 1.95 ng/ml



#27 Chlordane-5

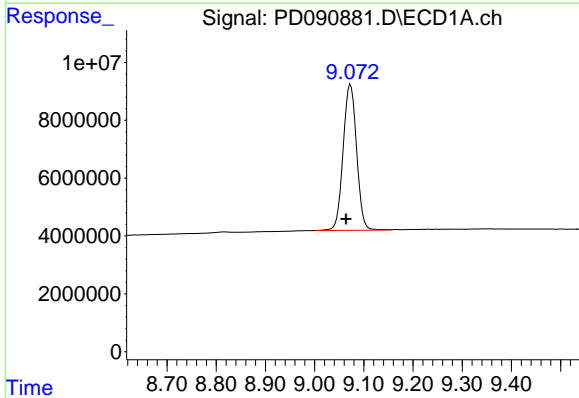
R.T.: 0.000 min  
 Exp R.T.: 6.866 min  
 Response: 0  
 Conc: N.D.

Instrument :  
 ECD\_D  
 ClientSampleId :  
 PB170283BL



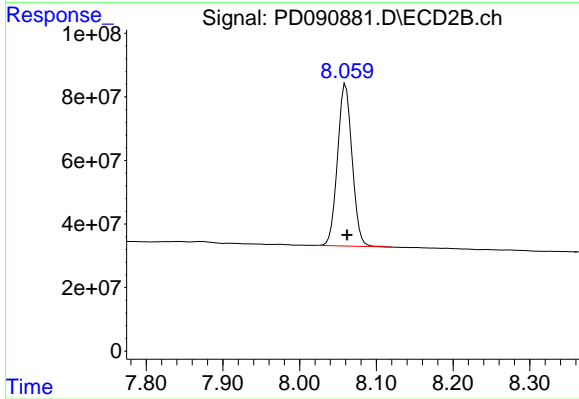
#27 Chlordane-5

R.T.: 6.071 min  
 Delta R.T.: -0.010 min  
 Response: 9056462  
 Conc: 6.14 ng/ml



#28 Decachlorobiphenyl

R.T.: 9.073 min  
 Delta R.T.: 0.009 min  
 Response: 95959461  
 Conc: 20.51 ng/ml



#28 Decachlorobiphenyl

R.T.: 8.060 min  
 Delta R.T.: -0.002 min  
 Response: 672975626  
 Conc: 22.22 ng/ml