

Data Path : Z:\pestpcbsrv\HPCHEM1\ECD_D\Data\PD102825\
 Data File : PD090886.D
 Signal(s) : Signal #1: ECD1A.ch Signal #2: ECD2B.ch
 Acq On : 28 Oct 2025 16:30
 Operator : AR\AJ
 Sample : Q3465-01
 Misc :
 ALS Vial : 9 Sample Multiplier: 1

Instrument :
 ECD_D
 ClientSampleId :
 SU-03-10242025

Integration File signal 1: autoint1.e
 Integration File signal 2: autoint2.e
 Quant Time: Oct 29 01:44:38 2025
 Quant Method : Z:\pestpcbsrv\HPCHEM1\ECD_D\Method\PD101725.M
 Quant Title : GC Extractables
 QLast Update : Fri Oct 17 17:43:28 2025
 Response via : Initial Calibration
 Integrator: ChemStation

Volume Inj. : 1 µl
 Signal #1 Phase : ZB-MR1 Signal #2 Phase: ZB-MR2
 Signal #1 Info : 30M x 0.32mm x0.5 Signal #2 Info : 30M x 0.32mm x 0.25µm

Compound	RT#1	RT#2	Resp#1	Resp#2	ng/ml	ng/ml

System Monitoring Compounds						
1) SA Tetrachlo...	3.544	2.873	30019050	290.9E6	9.640	9.770
28) SA Decachlor...	9.063	8.059	56700869	301.0E6	12.121	9.936
Target Compounds						
2) A alpha-BHC	3.986	3.405f	2288990	2069736	0.319	0.041 #
3) MA gamma-BHC...	4.327	3.726	642066	-4273502	0.094	N.D. #
4) MA Heptachlor	4.942f	4.090	2414809	8028550	0.432	0.180 #
5) MB Aldrin	5.284f	4.357	700499	10362561	0.107	0.224 #
6) B beta-BHC	4.523	4.040f	345942	7659744	0.132	0.386 #
7) B delta-BHC	4.769	4.254	2366310	-348979	0.350	N.D. #
8) B Heptachlo...	5.676	4.864	1935980	12209053	0.334	0.286
9) A Endosulfan I	0.000	5.253f	0	24648021	N.D.	0.626 #
10) B gamma-Chl...	5.940	5.141f	920164	80612766	0.155	1.793 #
11) B alpha-Chl...	6.026	5.177	8919108	32084590	1.443	0.744 #
12) B 4,4'-DDE	6.187	5.365	2485350	14682646	0.467	0.335 #
13) MA Dieldrin	6.342	5.499	226101	63822065	0.039	1.444 #
15) B Endosulfa...	6.786	6.057f	632995	11340503	0.127	0.302 #
16) A 4,4'-DDD	6.715f	5.923	3084402	3019681	0.761	0.083 #
17) MA 4,4'-DDT	6.990f	6.168	9069769	93522926	2.207	2.667
18) B Endrin al...	6.899	6.240	1071751	22660235	0.293	0.818 #
19) B Endosulfa...	7.141	6.469	935667	2245861	0.202	0.063 #
20) A Methoxychlor	7.490	6.725f	300633	3503290	0.141	0.201 #
21) B Endrin ke...	7.611	6.974	2059609	2810955	0.424	0.075 #
22) Mirex	0.000	7.167	0	8661393	N.D.	0.337 #
23) Chlordane-1	4.719	0.000	309631	0	1.638	N.D. #
24) Chlordane-2	5.231	4.485	3856591	4588888	19.969	3.518 #
25) Chlordane-3	5.940	5.141f	920164	80612766	1.206	20.715 #
26) Chlordane-4	6.026	5.177	8919108	32084590	9.206	9.603
27) Chlordane-5	6.864	6.057f	603874	11340503	4.019	7.683 #

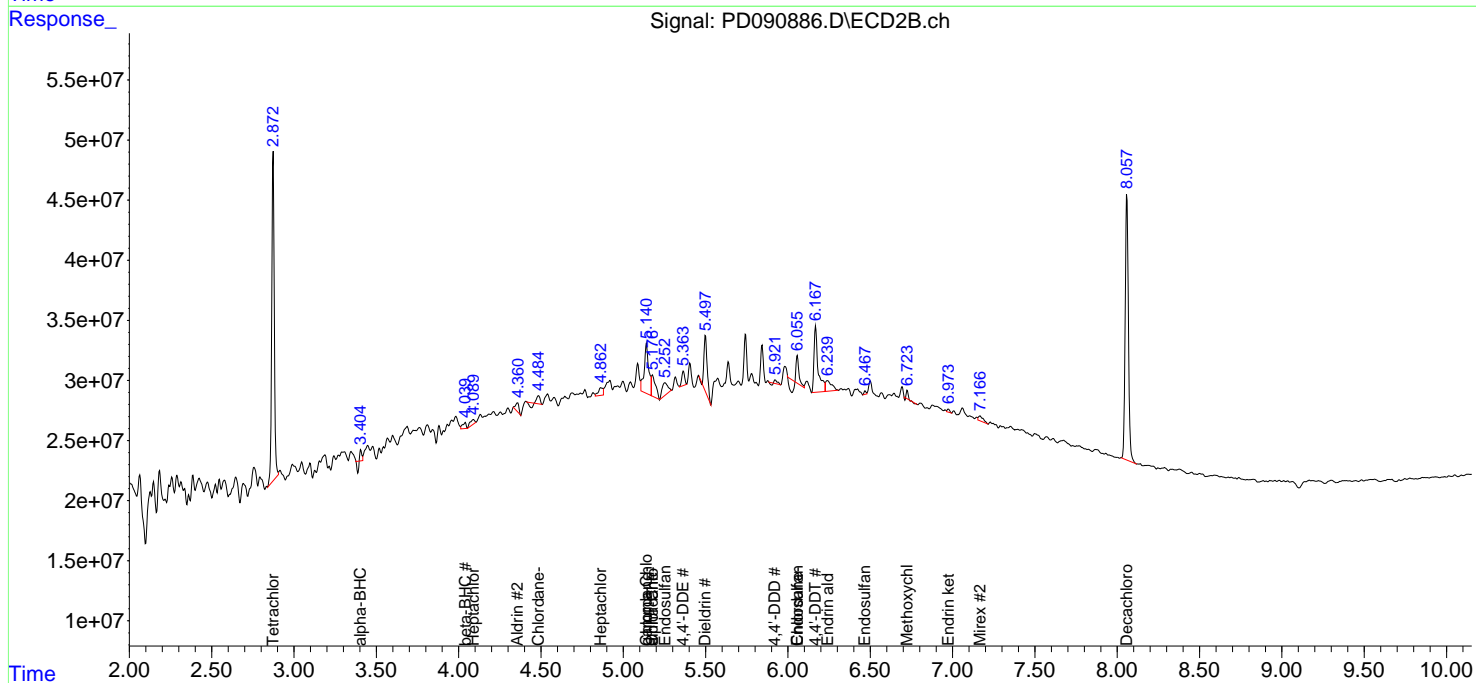
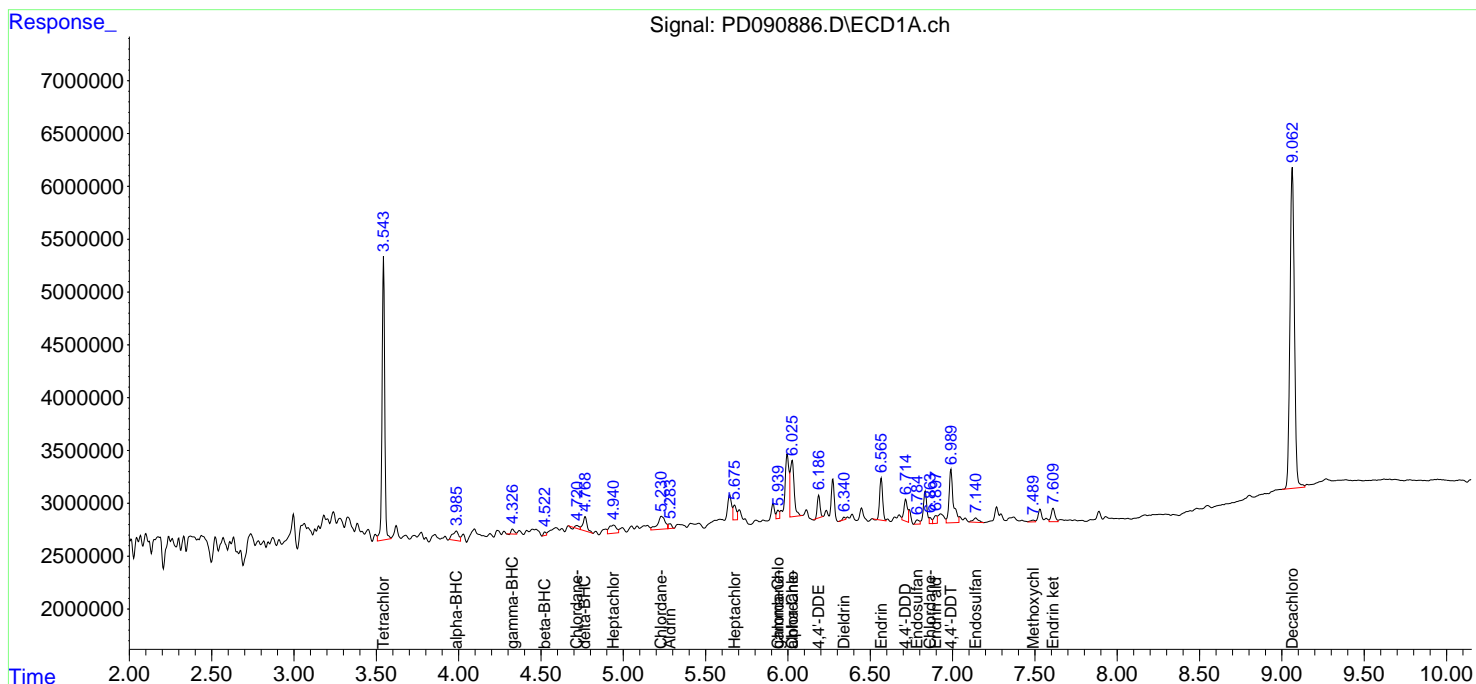
(f)=RT Delta > 1/2 Window (#)=Amounts differ by > 25% (m)=manual int.

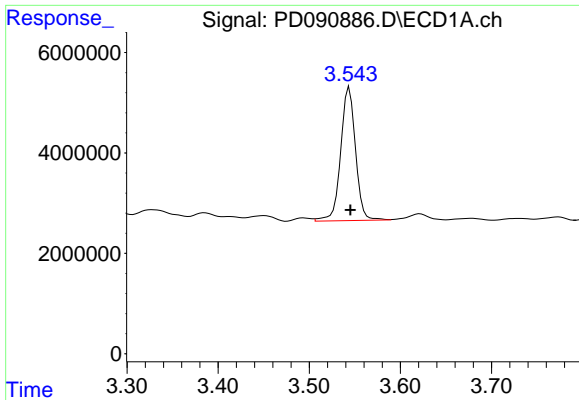
Data Path : Z:\pestpcbsrv\HPCHEM1\ECD_D\Data\PD102825\
 Data File : PD090886.D
 Signal(s) : Signal #1: ECD1A.ch Signal #2: ECD2B.ch
 Acq On : 28 Oct 2025 16:30
 Operator : AR\AJ
 Sample : Q3465-01
 Misc :
 ALS Vial : 9 Sample Multiplier: 1

Instrument :
 ECD_D
 ClientSampleId :
 SU-03-10242025

Integration File signal 1: autoint1.e
 Integration File signal 2: autoint2.e
 Quant Time: Oct 29 01:44:38 2025
 Quant Method : Z:\pestpcbsrv\HPCHEM1\ECD_D\Method\PD101725.M
 Quant Title : GC Extractables
 QLast Update : Fri Oct 17 17:43:28 2025
 Response via : Initial Calibration
 Integrator: ChemStation

Volume Inj. : 1 µl
 Signal #1 Phase : ZB-MR1 Signal #2 Phase: ZB-MR2
 Signal #1 Info : 30M x 0.32mm x0.5 Signal #2 Info : 30M x 0.32mm x 0.25µm

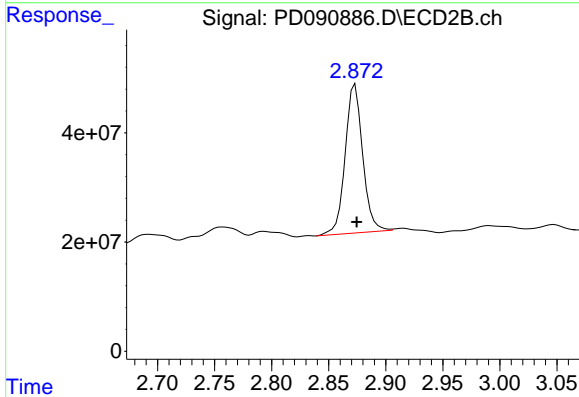




#1 Tetrachloro-m-xylene

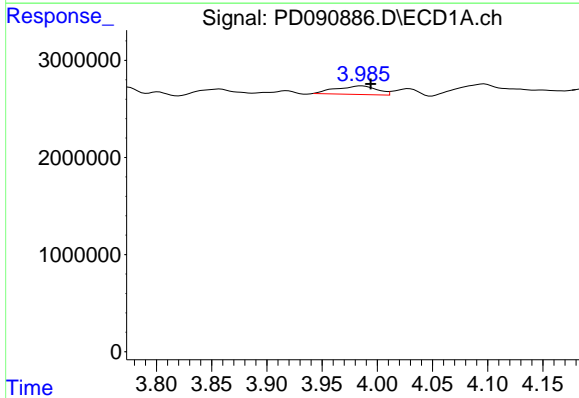
R.T.: 3.544 min
 Delta R.T.: 0.000 min
 Response: 30019050
 Conc: 9.64 ng/ml

Instrument :
 ECD_D
 ClientSampleId :
 SU-03-10242025



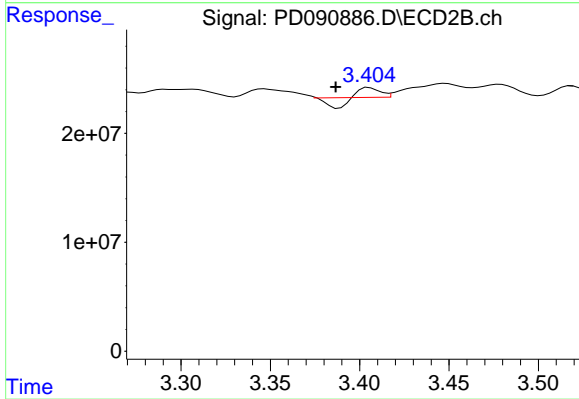
#1 Tetrachloro-m-xylene

R.T.: 2.873 min
 Delta R.T.: -0.001 min
 Response: 290924183
 Conc: 9.77 ng/ml



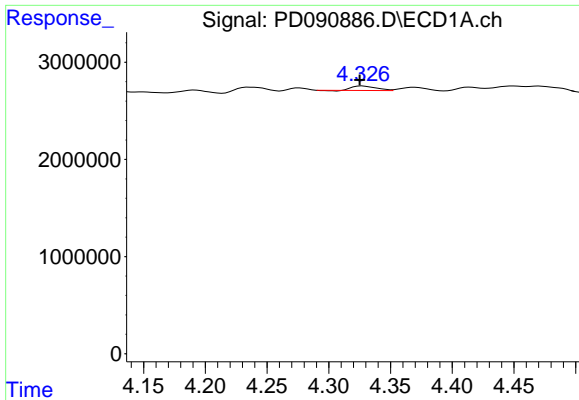
#2 alpha-BHC

R.T.: 3.986 min
 Delta R.T.: -0.008 min
 Response: 2288990
 Conc: 0.32 ng/ml



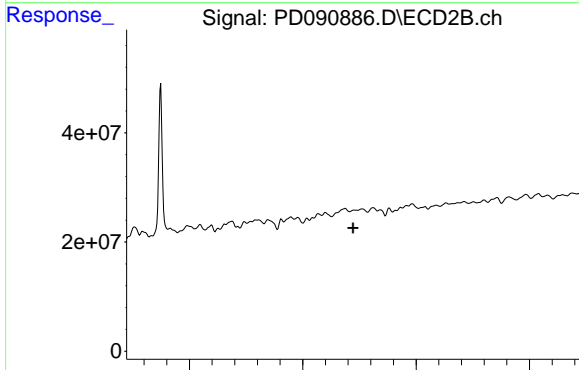
#2 alpha-BHC

R.T.: 3.405 min
 Delta R.T.: 0.019 min
 Response: 2069736
 Conc: 0.04 ng/ml

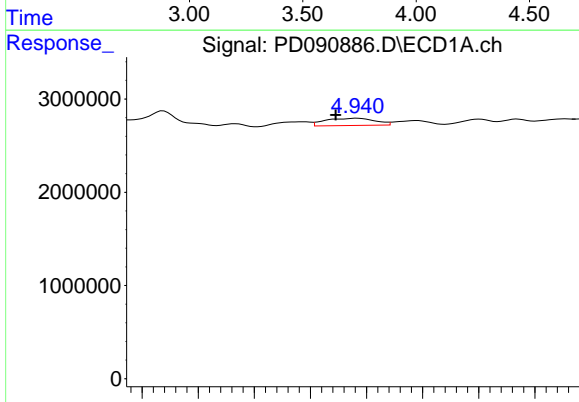


#3 gamma-BHC (Lindane)
 R.T.: 4.327 min
 Delta R.T.: 0.002 min
 Response: 642066
 Conc: 0.09 ng/ml

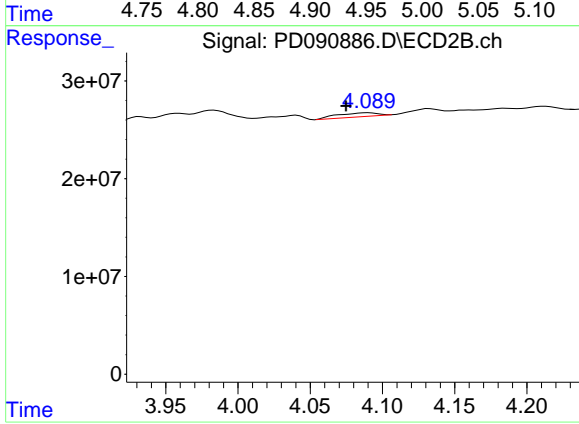
Instrument :
 ECD_D
 ClientSampleId :
 SU-03-10242025



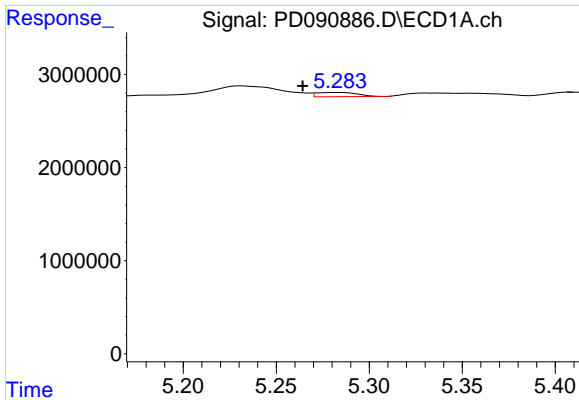
#3 gamma-BHC (Lindane)
 R.T.: 3.726 min
 Delta R.T.: 0.003 min
 Response: -4273502
 Conc: N.D.



#4 Heptachlor
 R.T.: 4.942 min
 Delta R.T.: 0.019 min
 Response: 2414809
 Conc: 0.43 ng/ml

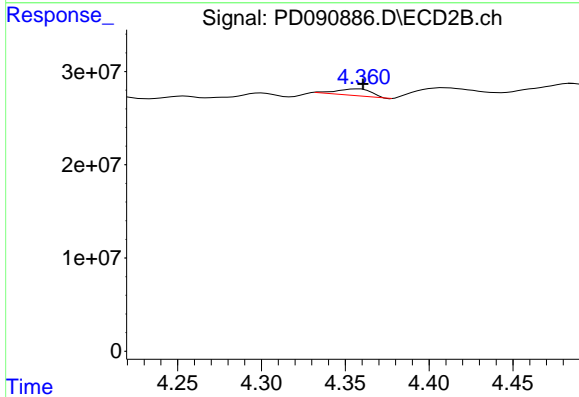


#4 Heptachlor
 R.T.: 4.090 min
 Delta R.T.: 0.015 min
 Response: 8028550
 Conc: 0.18 ng/ml

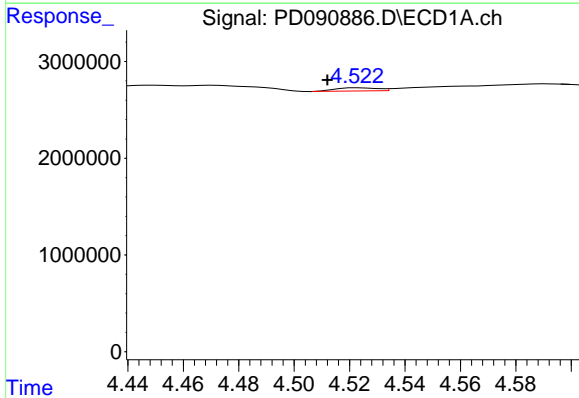


#5 Aldrin
 R.T.: 5.284 min
 Delta R.T.: 0.020 min
 Response: 700499
 Conc: 0.11 ng/ml

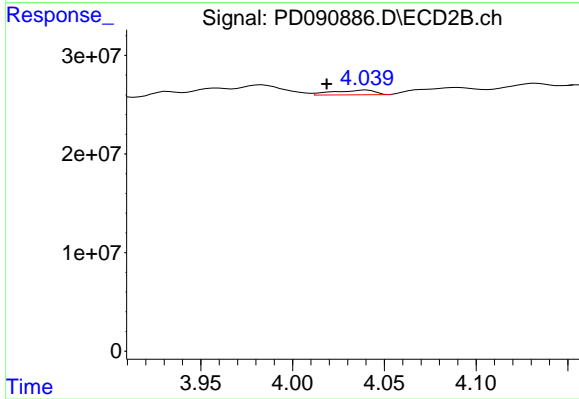
Instrument :
 ECD_D
 ClientSampleId :
 SU-03-10242025



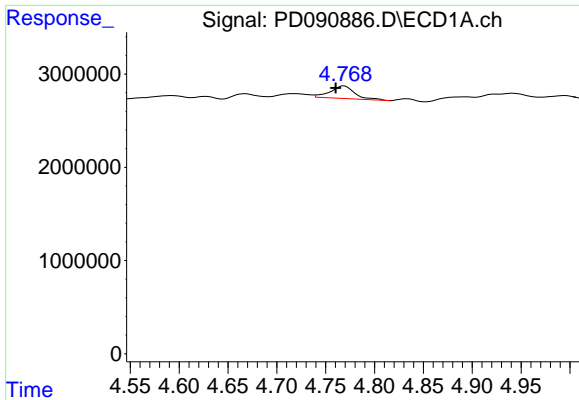
#5 Aldrin
 R.T.: 4.357 min
 Delta R.T.: -0.003 min
 Response: 10362561
 Conc: 0.22 ng/ml



#6 beta-BHC
 R.T.: 4.523 min
 Delta R.T.: 0.011 min
 Response: 345942
 Conc: 0.13 ng/ml



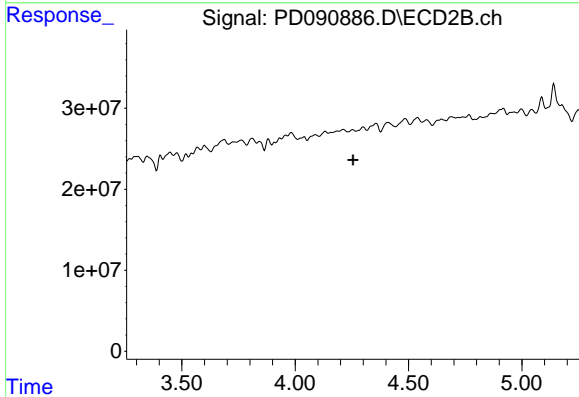
#6 beta-BHC
 R.T.: 4.040 min
 Delta R.T.: 0.021 min
 Response: 7659744
 Conc: 0.39 ng/ml



#7 delta-BHC

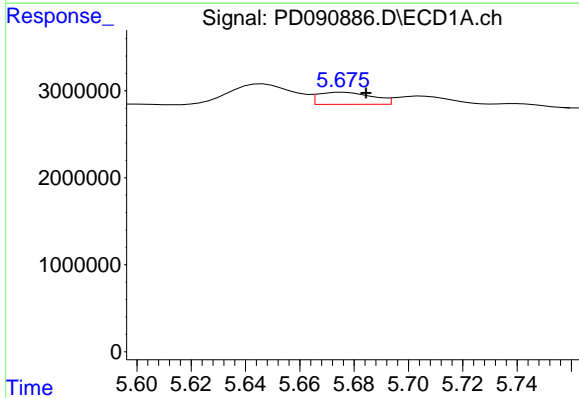
R.T.: 4.769 min
 Delta R.T.: 0.009 min
 Response: 2366310
 Conc: 0.35 ng/ml

Instrument :
 ECD_D
 ClientSampleId :
 SU-03-10242025



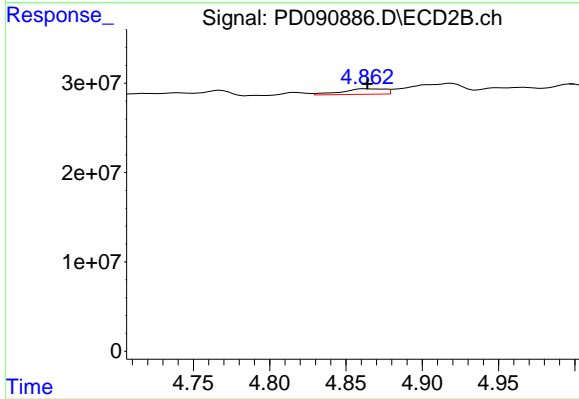
#7 delta-BHC

R.T.: 4.254 min
 Delta R.T.: -0.001 min
 Response: -348979
 Conc: N.D.



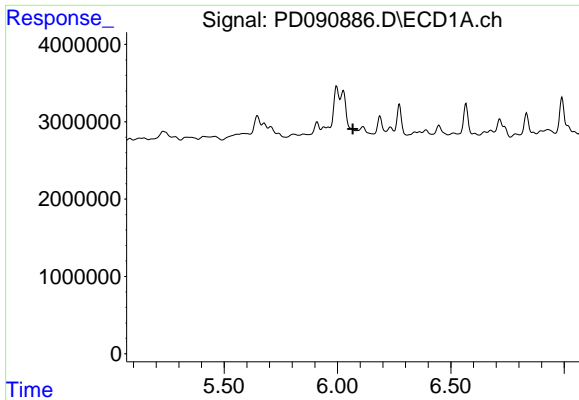
#8 Heptachlor epoxide

R.T.: 5.676 min
 Delta R.T.: -0.008 min
 Response: 1935980
 Conc: 0.33 ng/ml



#8 Heptachlor epoxide

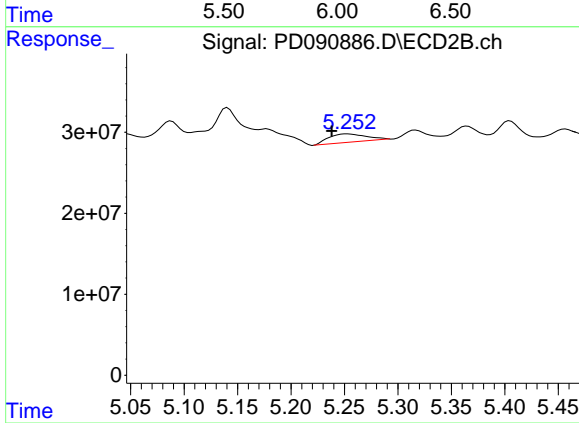
R.T.: 4.864 min
 Delta R.T.: 0.000 min
 Response: 12209053
 Conc: 0.29 ng/ml



#9 Endosulfan I

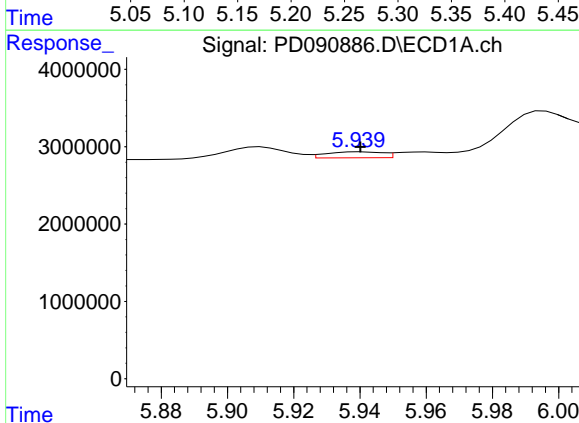
R.T.: 0.000 min
 Exp R.T.: 6.068 min
 Response: 0
 Conc: N.D.

Instrument :
 ECD_D
 ClientSampleId :
 SU-03-10242025



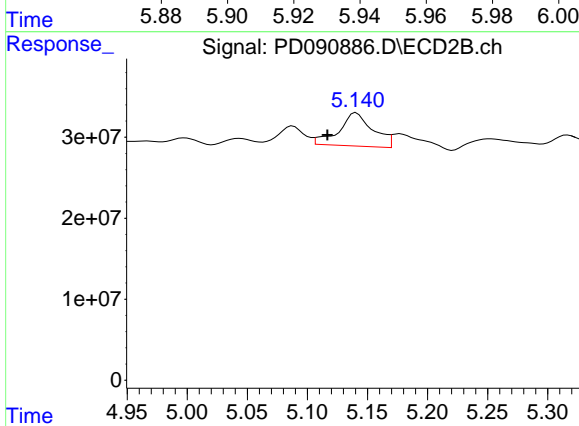
#9 Endosulfan I

R.T.: 5.253 min
 Delta R.T.: 0.015 min
 Response: 24648021
 Conc: 0.63 ng/ml



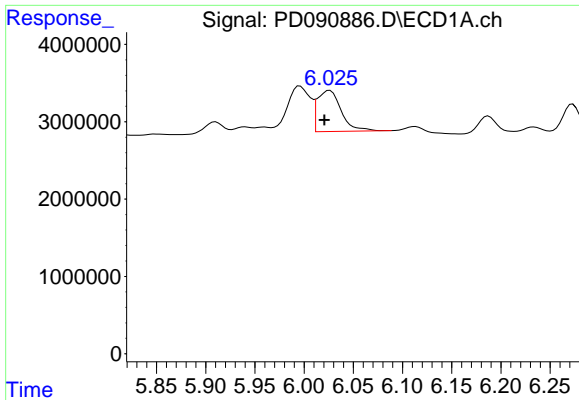
#10 gamma-Chlordane

R.T.: 5.940 min
 Delta R.T.: 0.000 min
 Response: 920164
 Conc: 0.16 ng/ml



#10 gamma-Chlordane

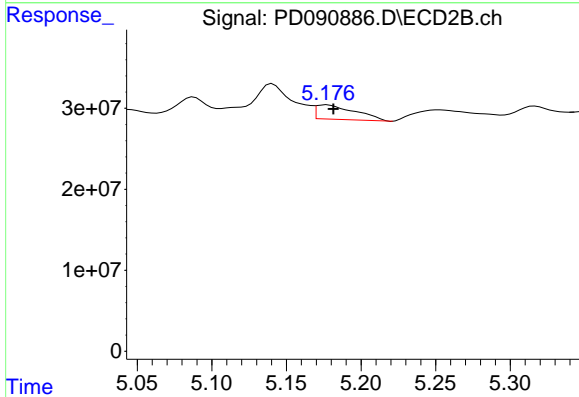
R.T.: 5.141 min
 Delta R.T.: 0.024 min
 Response: 80612766
 Conc: 1.79 ng/ml



#11 alpha-Chlordane

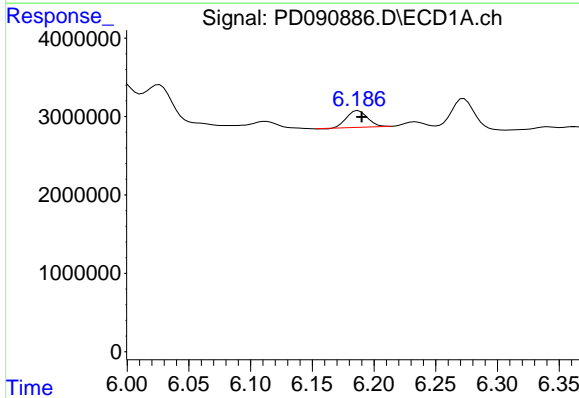
R.T.: 6.026 min
 Delta R.T.: 0.006 min
 Response: 8919108
 Conc: 1.44 ng/ml

Instrument :
 ECD_D
 ClientSampleId :
 SU-03-10242025



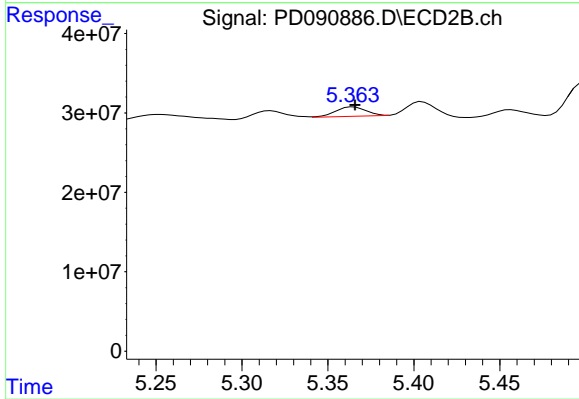
#11 alpha-Chlordane

R.T.: 5.177 min
 Delta R.T.: -0.004 min
 Response: 32084590
 Conc: 0.74 ng/ml



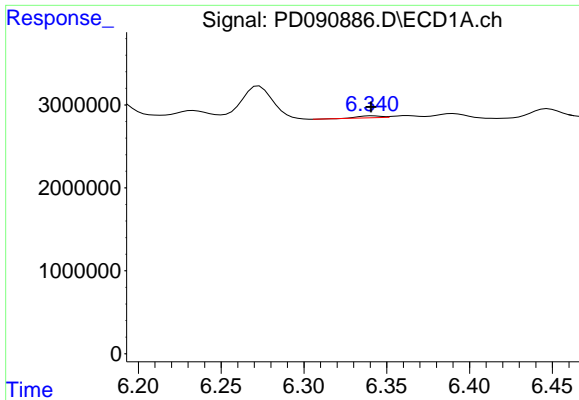
#12 4,4'-DDE

R.T.: 6.187 min
 Delta R.T.: -0.003 min
 Response: 2485350
 Conc: 0.47 ng/ml



#12 4,4'-DDE

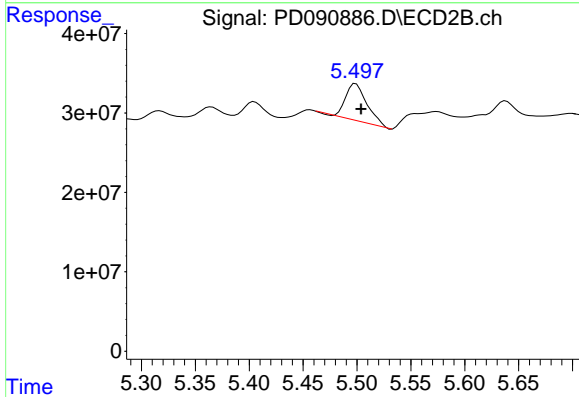
R.T.: 5.365 min
 Delta R.T.: 0.000 min
 Response: 14682646
 Conc: 0.33 ng/ml



#13 Dieldrin

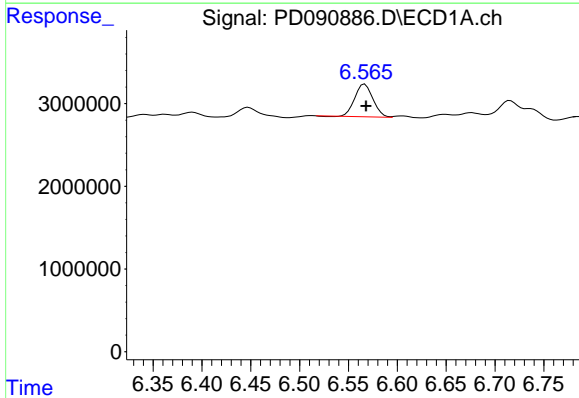
R.T.: 6.342 min
 Delta R.T.: 0.001 min
 Response: 226101
 Conc: 0.04 ng/ml

Instrument : ECD_D
 ClientSampleId : SU-03-10242025



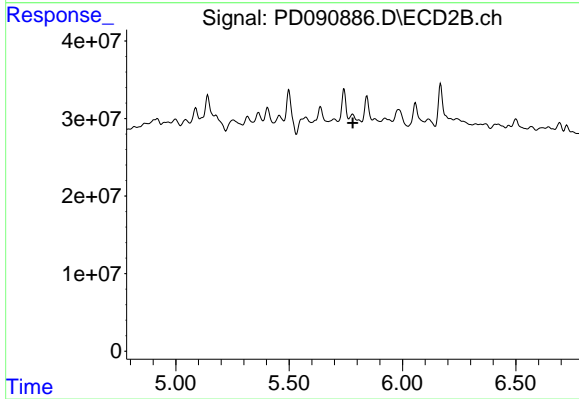
#13 Dieldrin

R.T.: 5.499 min
 Delta R.T.: -0.005 min
 Response: 63822065
 Conc: 1.44 ng/ml



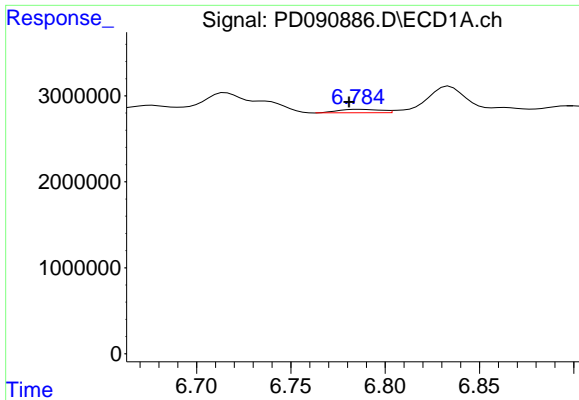
#14 Endrin

R.T.: 6.567 min
 Delta R.T.: -0.001 min
 Response: 5069862
 Conc: 1.02 ng/ml



#14 Endrin

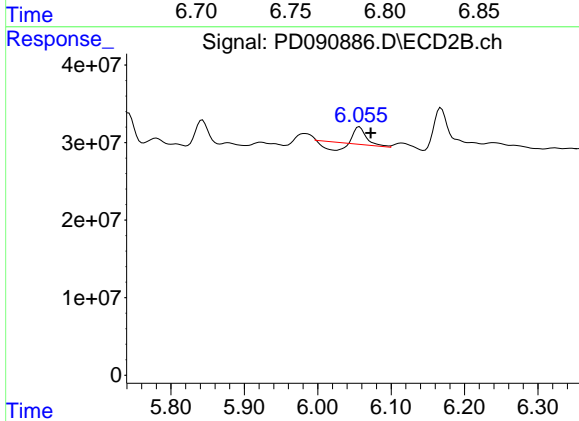
R.T.: 5.780 min
 Delta R.T.: 0.000 min
 Response: -53317776
 Conc: N.D.



#15 Endosulfan II

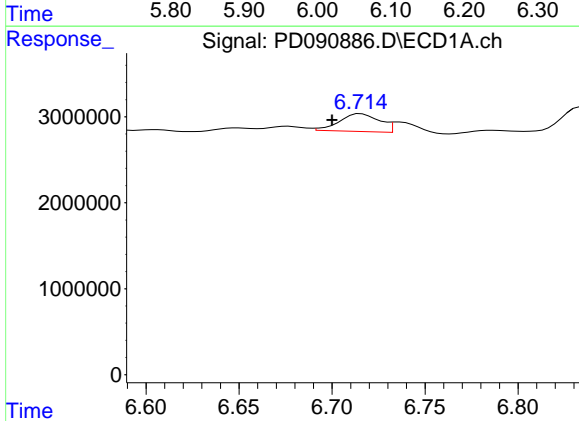
R.T.: 6.786 min
 Delta R.T.: 0.005 min
 Response: 632995
 Conc: 0.13 ng/ml

Instrument :
 ECD_D
 ClientSampleId :
 SU-03-10242025



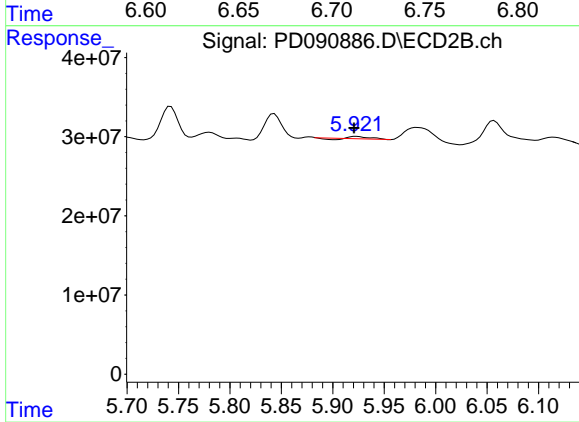
#15 Endosulfan II

R.T.: 6.057 min
 Delta R.T.: -0.015 min
 Response: 11340503
 Conc: 0.30 ng/ml



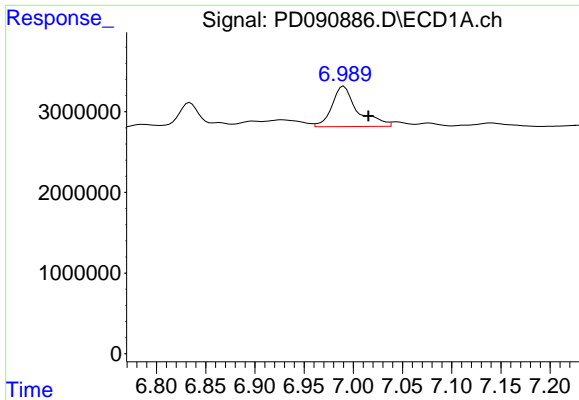
#16 4,4'-DDD

R.T.: 6.715 min
 Delta R.T.: 0.015 min
 Response: 3084402
 Conc: 0.76 ng/ml



#16 4,4'-DDD

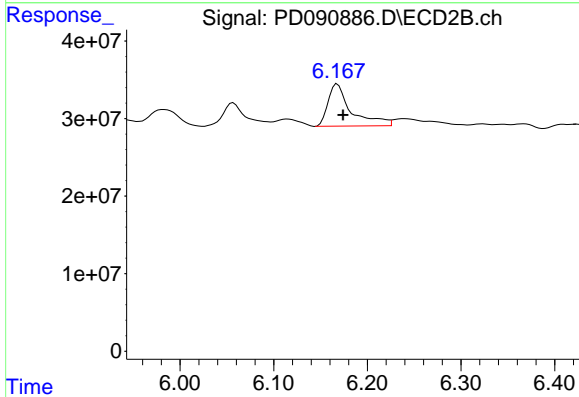
R.T.: 5.923 min
 Delta R.T.: 0.002 min
 Response: 3019681
 Conc: 0.08 ng/ml



#17 4,4'-DDT

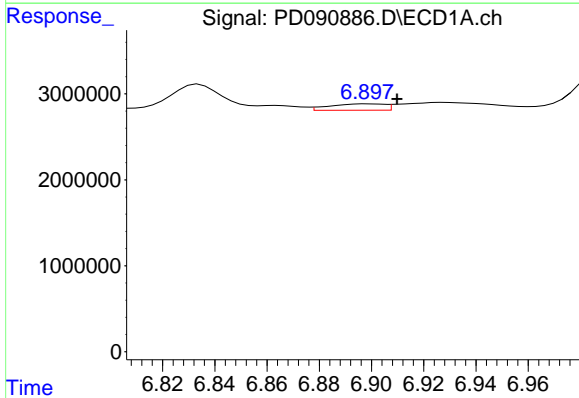
R.T.: 6.990 min
 Delta R.T.: -0.025 min
 Response: 9069769
 Conc: 2.21 ng/ml

Instrument :
 ECD_D
 ClientSampleId :
 SU-03-10242025



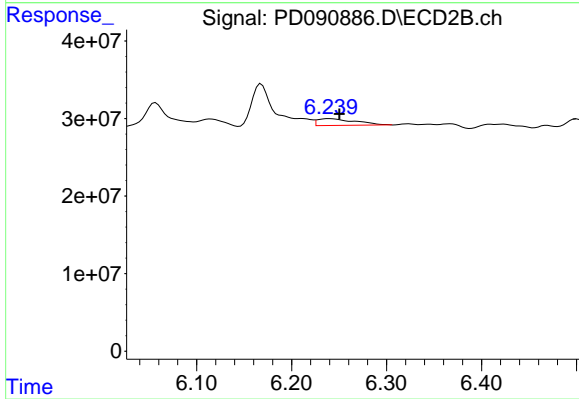
#17 4,4'-DDT

R.T.: 6.168 min
 Delta R.T.: -0.006 min
 Response: 93522926
 Conc: 2.67 ng/ml



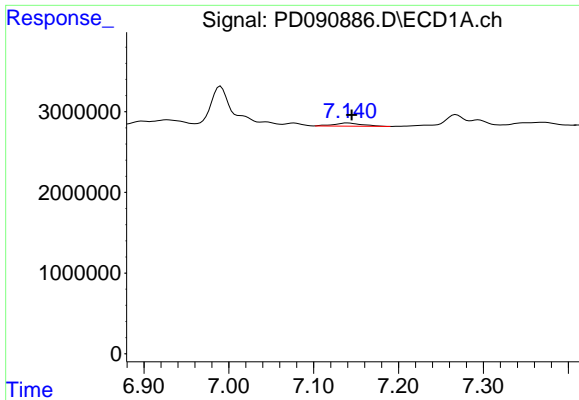
#18 Endrin aldehyde

R.T.: 6.899 min
 Delta R.T.: -0.011 min
 Response: 1071751
 Conc: 0.29 ng/ml



#18 Endrin aldehyde

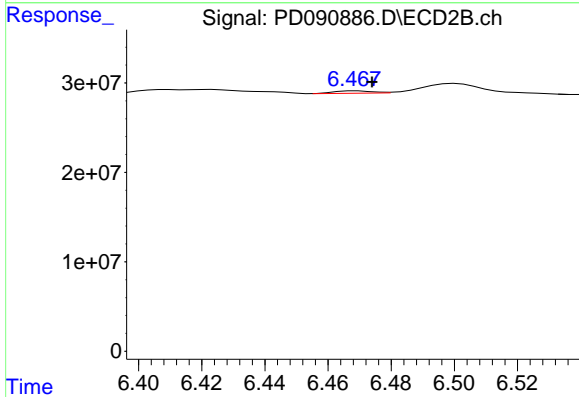
R.T.: 6.240 min
 Delta R.T.: -0.010 min
 Response: 22660235
 Conc: 0.82 ng/ml



#19 Endosulfan Sulfate

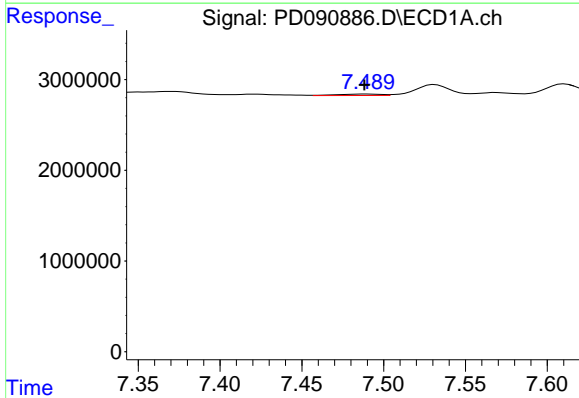
R.T.: 7.141 min
 Delta R.T.: -0.004 min
 Response: 935667
 Conc: 0.20 ng/ml

Instrument :
 ECD_D
 ClientSampleId :
 SU-03-10242025



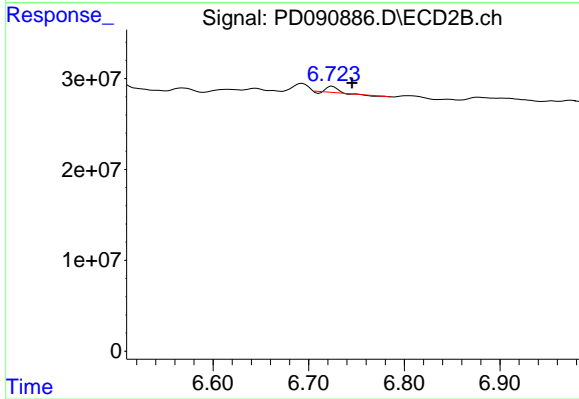
#19 Endosulfan Sulfate

R.T.: 6.469 min
 Delta R.T.: -0.005 min
 Response: 2245861
 Conc: 0.06 ng/ml



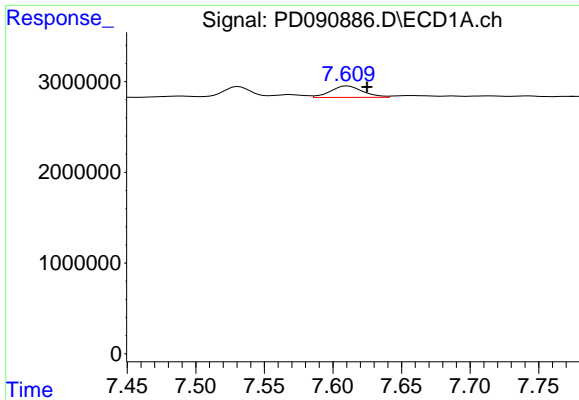
#20 Methoxychlor

R.T.: 7.490 min
 Delta R.T.: 0.002 min
 Response: 300633
 Conc: 0.14 ng/ml



#20 Methoxychlor

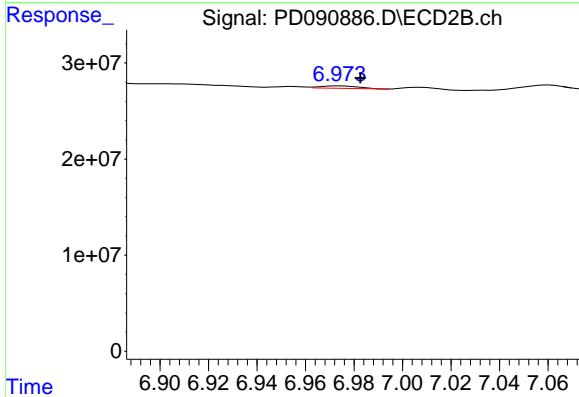
R.T.: 6.725 min
 Delta R.T.: -0.020 min
 Response: 3503290
 Conc: 0.20 ng/ml



#21 Endrin ketone

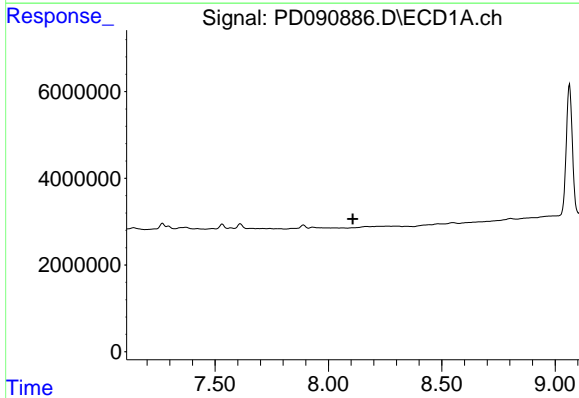
R.T.: 7.611 min
 Delta R.T.: -0.014 min
 Response: 2059609
 Conc: 0.42 ng/ml

Instrument : ECD_D
 ClientSampleId : SU-03-10242025



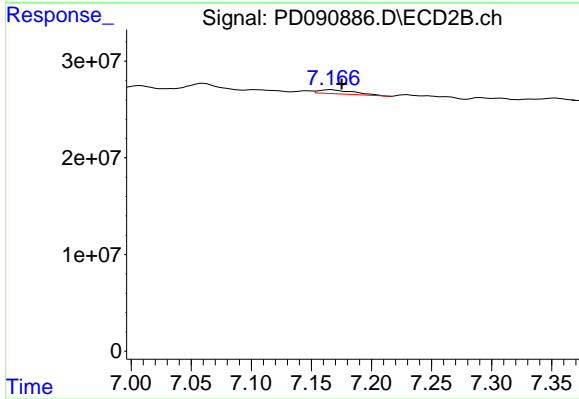
#21 Endrin ketone

R.T.: 6.974 min
 Delta R.T.: -0.008 min
 Response: 2810955
 Conc: 0.07 ng/ml



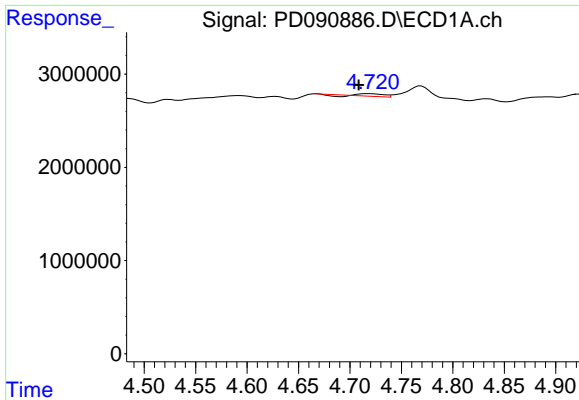
#22 Mirex

R.T.: 0.000 min
 Exp R.T. : 8.107 min
 Response: 0
 Conc: N.D.



#22 Mirex

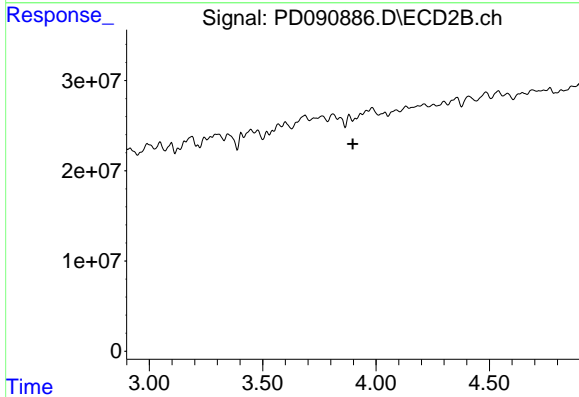
R.T.: 7.167 min
 Delta R.T.: -0.009 min
 Response: 8661393
 Conc: 0.34 ng/ml



#23 Chlordane-1

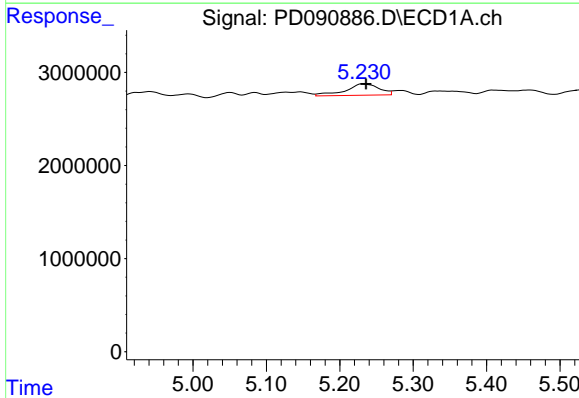
R.T.: 4.719 min
 Delta R.T.: 0.010 min
 Response: 309631
 Conc: 1.64 ng/ml

Instrument :
 ECD_D
 ClientSampleId :
 SU-03-10242025



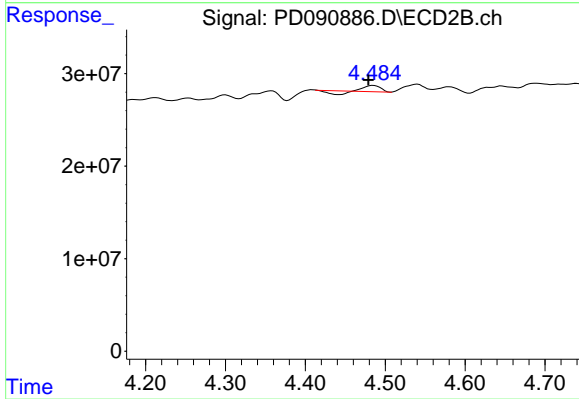
#23 Chlordane-1

R.T.: 0.000 min
 Exp R.T. : 3.898 min
 Response: 0
 Conc: N.D.



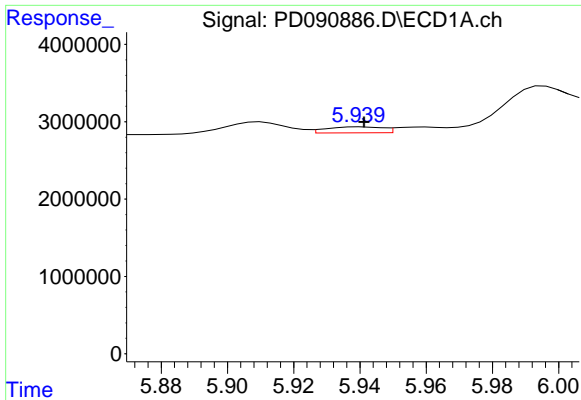
#24 Chlordane-2

R.T.: 5.231 min
 Delta R.T.: -0.004 min
 Response: 3856591
 Conc: 19.97 ng/ml



#24 Chlordane-2

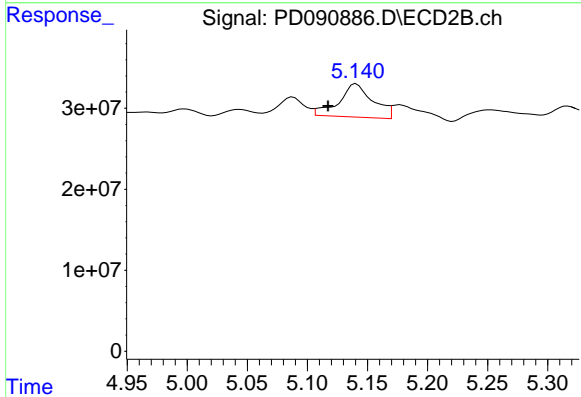
R.T.: 4.485 min
 Delta R.T.: 0.006 min
 Response: 4588888
 Conc: 3.52 ng/ml



#25 Chlordane-3

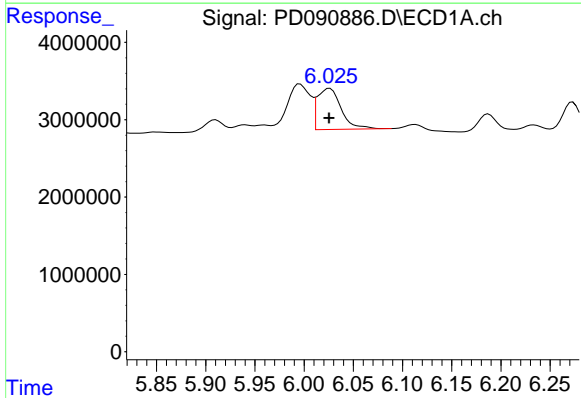
R.T.: 5.940 min
 Delta R.T.: -0.001 min
 Response: 920164
 Conc: 1.21 ng/ml

Instrument :
 ECD_D
 ClientSampleId :
 SU-03-10242025



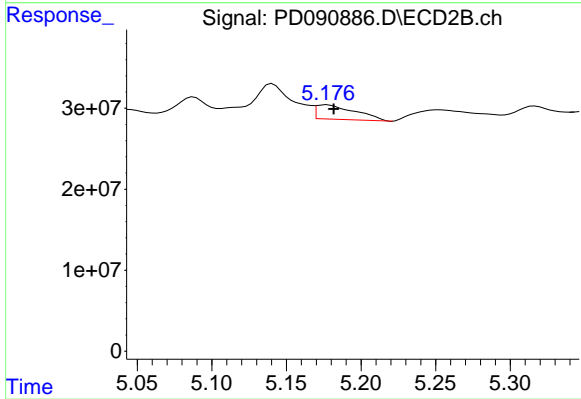
#25 Chlordane-3

R.T.: 5.141 min
 Delta R.T.: 0.024 min
 Response: 80612766
 Conc: 20.71 ng/ml



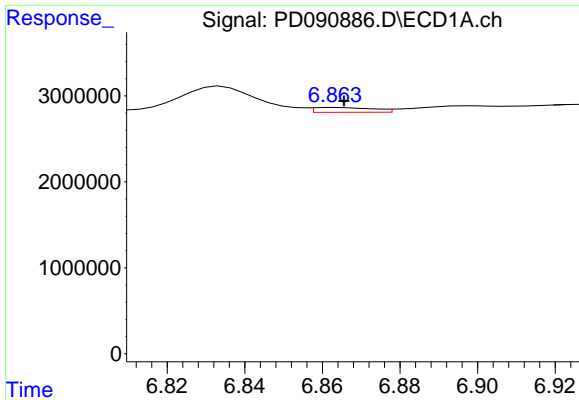
#26 Chlordane-4

R.T.: 6.026 min
 Delta R.T.: 0.000 min
 Response: 8919108
 Conc: 9.21 ng/ml



#26 Chlordane-4

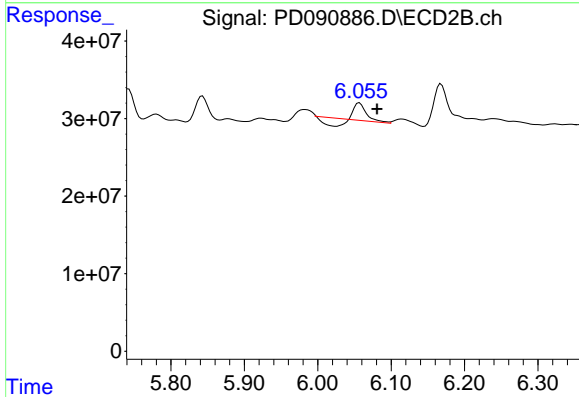
R.T.: 5.177 min
 Delta R.T.: -0.005 min
 Response: 32084590
 Conc: 9.60 ng/ml



#27 Chlordane-5

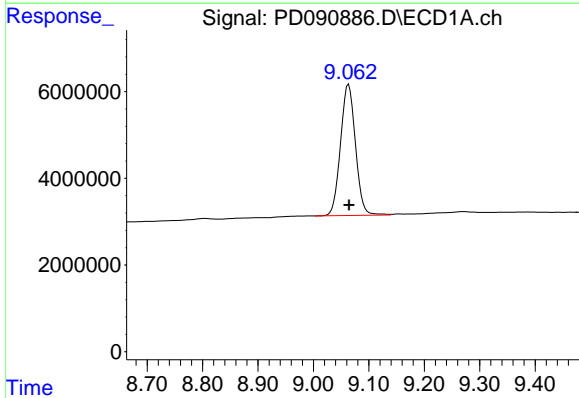
R.T.: 6.864 min
 Delta R.T.: -0.002 min
 Response: 603874
 Conc: 4.02 ng/ml

Instrument :
 ECD_D
 ClientSampleId :
 SU-03-10242025



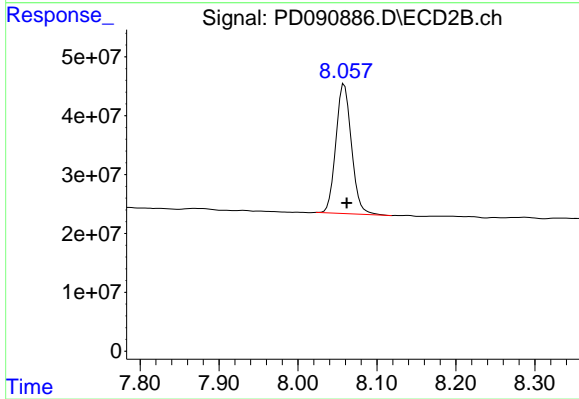
#27 Chlordane-5

R.T.: 6.057 min
 Delta R.T.: -0.024 min
 Response: 11340503
 Conc: 7.68 ng/ml



#28 Decachlorobiphenyl

R.T.: 9.063 min
 Delta R.T.: 0.000 min
 Response: 56700869
 Conc: 12.12 ng/ml



#28 Decachlorobiphenyl

R.T.: 8.059 min
 Delta R.T.: -0.003 min
 Response: 300987976
 Conc: 9.94 ng/ml